



**INFINITE FOUNDRY**

***UNLOCKING THE WORLD'S CREATIVITY***

# ***EMPOWERING INNOVATION THROUGH DIGITAL TWIN TECHNOLOGY***

- ***Make manufacturing as easy as posting on social media***
- ***Track everything to ensure it is produced on time with quality***

# CHALLENGES

## Fragmented Knowledge in Complex Manufacturing

### ***Limited Access to Insights***

*Detailed manufacturing knowledge is traditionally complex and restricted to specialists.*

### ***Barriers to Creativity***

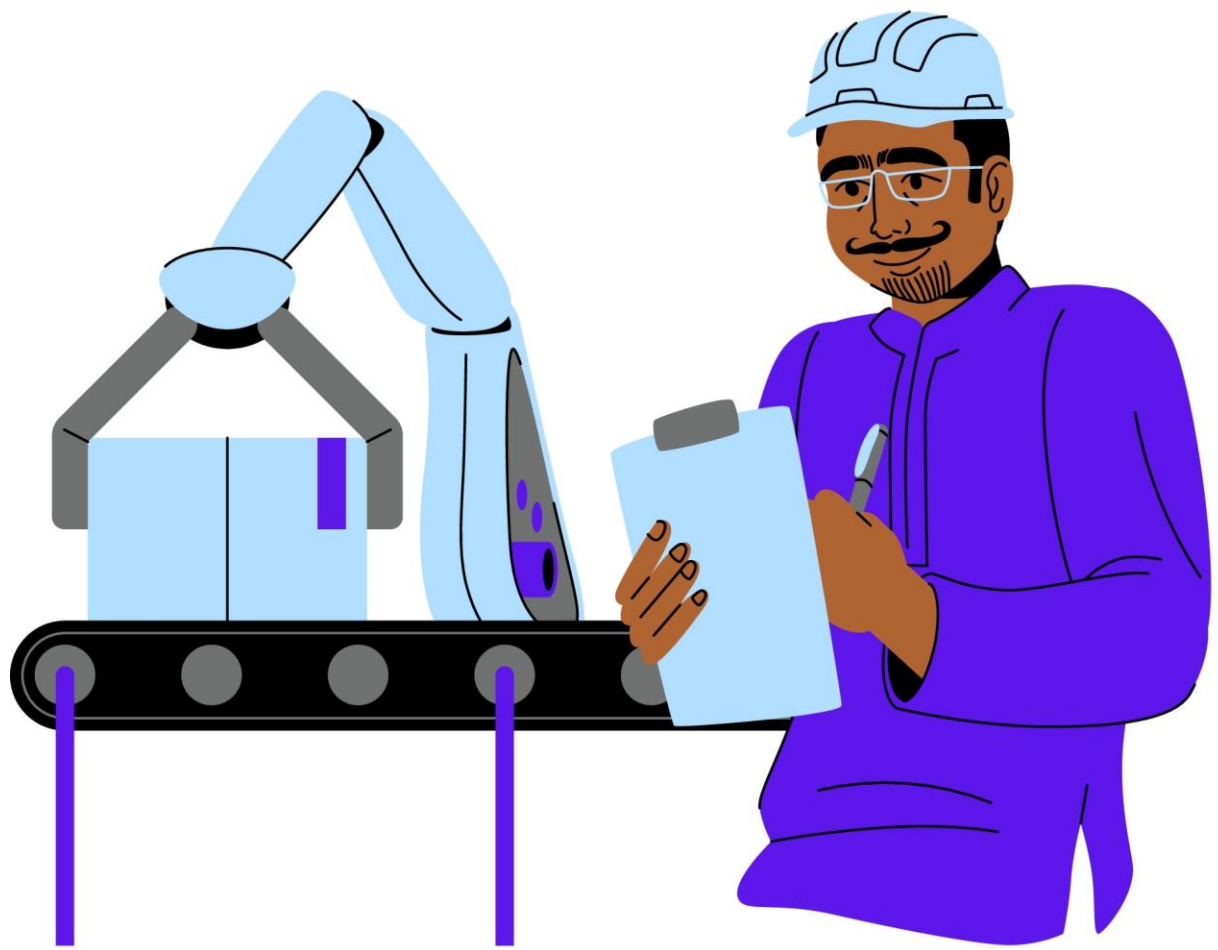
*High costs and inefficiencies hinder innovation and the full creative potential.*

### ***Sustainability Challenges***

*Real-world constraints are often overlooked, making sustainability goals hard to achieve.*

# What we do

## GROUNDBREAKING APPROACH TO DIGITAL TWINS

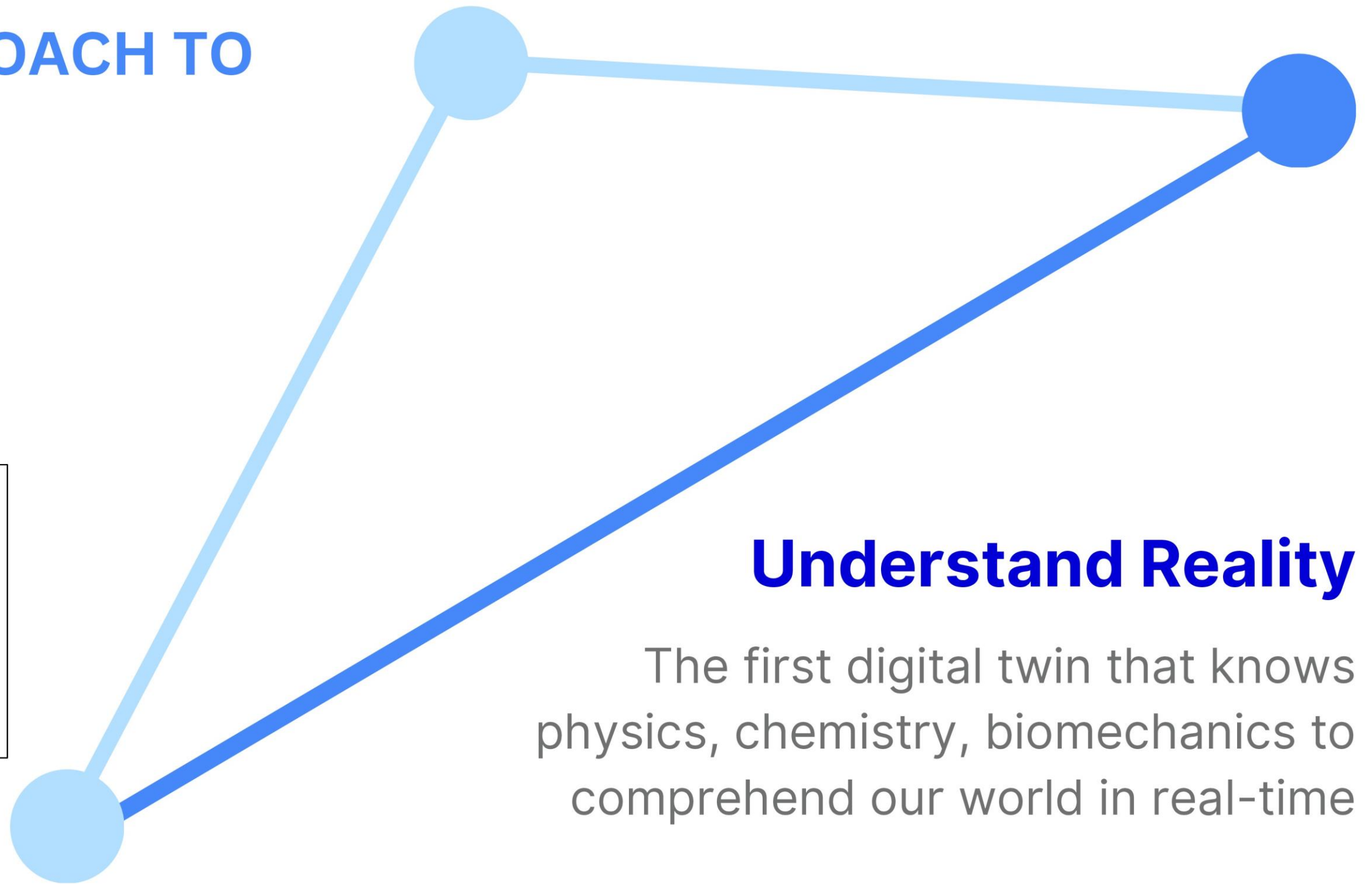


### **Bottom-Up Innovation**

We reversed the traditional approach—scanning machines first to build software grounded in reality.

# *What we do*

**GROUNDBREAKING APPROACH TO  
DIGITAL TWINS**

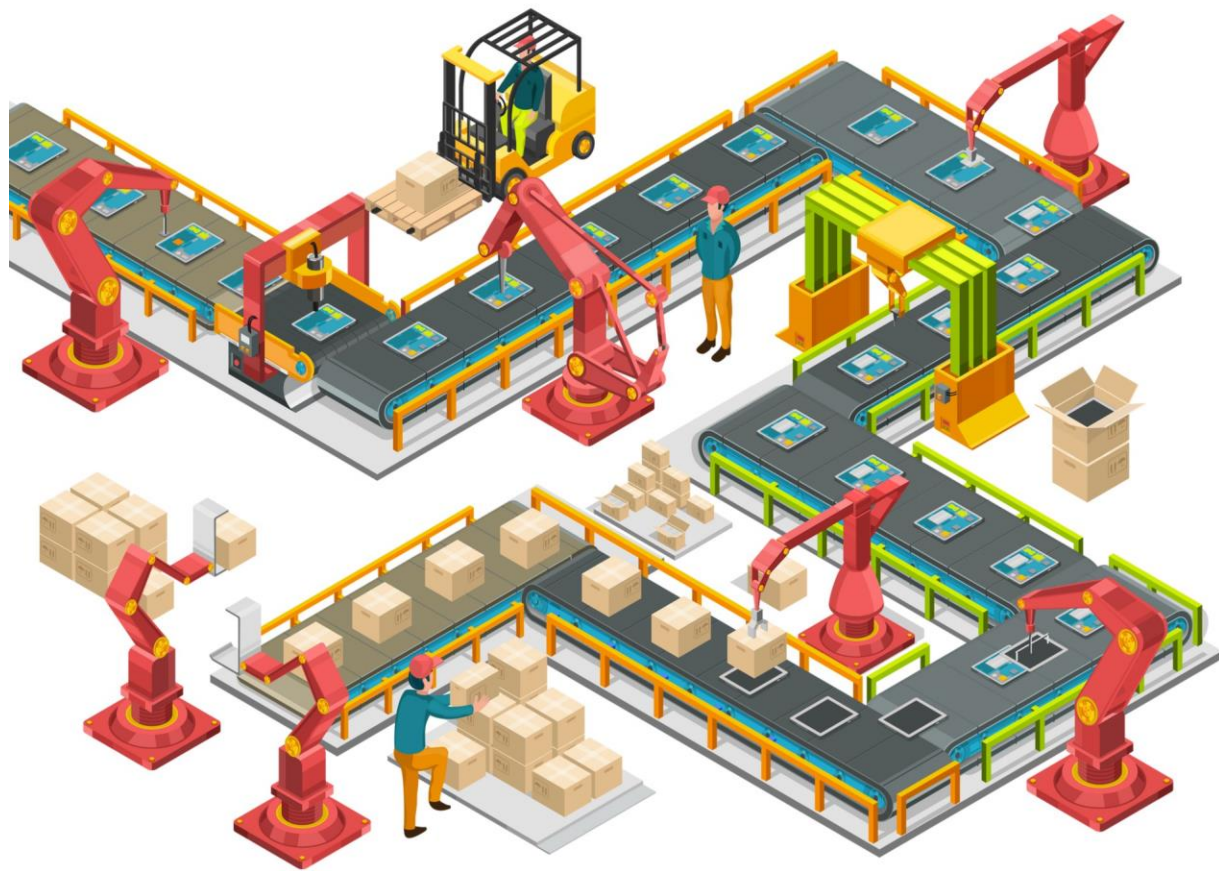


## **Understand Reality**

The first digital twin that knows physics, chemistry, biomechanics to comprehend our world in real-time

# *What we do*

## GROUNDBREAKING APPROACH TO DIGITAL TWINS



### **Unmatched Precision**

We have the largest database of real factories in 3D so our digital twin understands human mistakes

# DIGITAL TWIN IS THE FOUNDATION TO MAXIMIZE THE POTENTIAL OF NEW TECHNOLOGIES



## Global Coordination with 5G

*Enables simultaneous, decentralized manufacturing across the globe*



## XR-Enhanced Visualization

*Supports XR, empowering users to visualize, design, and track from concept to production.*



## Real-World Data for GenAI

*Fuels GenAI with practical, real-time data grounded in actual constraints, enhancing user outcomes.*

***WE TURN RAW DATA INTO  
KNOWLEDGE***



# How?

Real-time Data  
from Sensors



Virtual  
Representations

*to answer...*

- *how can I make this?*
- *what will it cost?*
- *how to improve its sustainably?*

# ***Collaborate in metaverse powered by digital twin***

- *Ask system to design any product without expert knowledge*
- *Share your customized products and receive fee when others use them*
- *Decide how it is going to be manufactured*
- *From home appliances and cars, to house and cities*

# *Vision: Our world back to the people!*

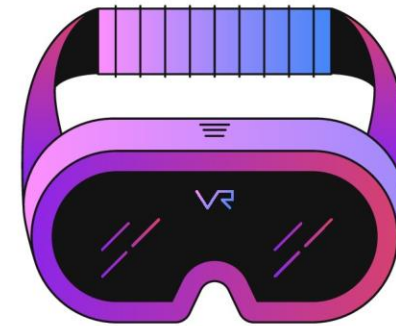
## **Digital Twin**

*World's data and insight infrastructure*



### **Decentralized Manufacturing**

*Approve the entire  
manufacturing process*



### **XR**

*Accompany lifecycle of product  
from design and manufacturing, to  
operation and recycling*



### **GenAI**

*Talk with personal assistant  
about anything that is  
happening in your world*



**Infinite Foundry**  
3D Digital Plant

"Não vem  
pensando  
de curto

Wern

STEAMVR 2.5.5

Jogando  
Siemens\_Mini\_Cervejaria

1.5 of 11.1 ms (90 Hz)

The SteamVR performance overlay is a dark rectangular box in the bottom right corner. It contains the text 'STEAMVR 2.5.5' at the top, followed by 'Jogando' and 'Siemens\_Mini\_Cervejaria'. Below this are icons for SteamVR, a controller, and other system icons. At the bottom, it shows a performance graph and the text '1.5 of 11.1 ms (90 Hz)'. The background of the overlay is dark with light-colored text and icons.





**InfiniteFoundry**  
3D Digital Plant

***JOIN US TO FINALLY BRING OUR WORLD TO  
THE 21ST CENTURY, WHERE KNOWLEDGE,  
CREATIVITY AND SUSTAINABILITY ARE THE  
BASIS OF OUR FUTURE!***



**InfiniteFoundry**  
3D Digital Plant