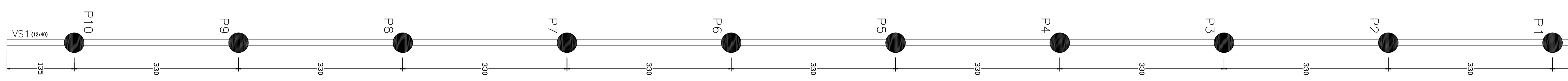
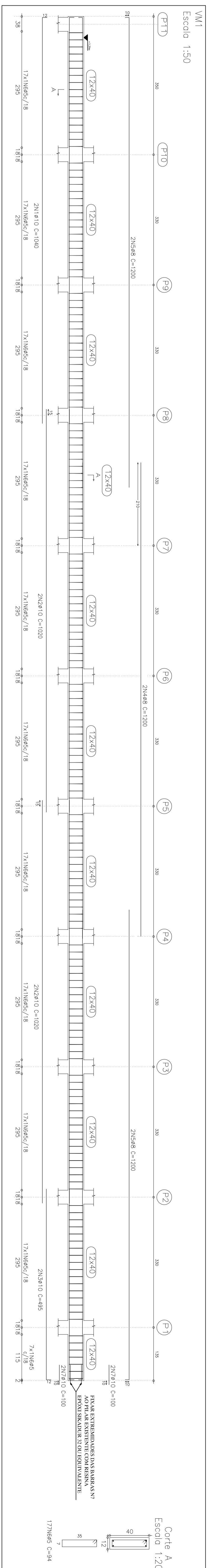


PLANTA DE FORMAS DA VIGA INTERMEDIÁRIA (COTA +3,20m) ESC.: 1:50



PLANTA DE FORMAS DA VIGA SUPERIOR (COTA +6,15m) ESC.: 1:50



DETALHAMENTO DA VIGA INTERMEDIÁRIA ESC.: INDICADA

Table with 4 columns: Item, Description, Quantity, and Unit. Summary of reinforcement quantities for the intermediate beam.

Table with 10 columns: Item, Position, Dimensions, and various reinforcement parameters (Area, Volume, etc.) for the intermediate beam.

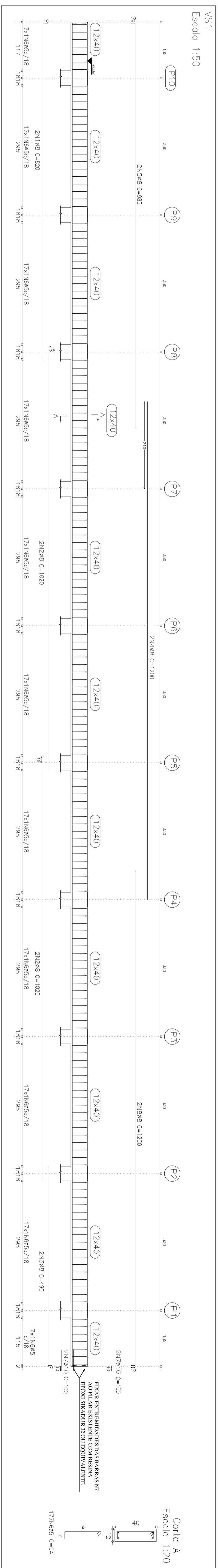


Table with 4 columns: Item, Description, Quantity, and Unit. Summary of reinforcement quantities for the superior beam.

Table with 10 columns: Item, Position, Dimensions, and various reinforcement parameters (Area, Volume, etc.) for the superior beam.

NOTAS:
- Cada ementa deve conter o nome completo do autor e o nome da obra.
- O autor deve utilizar a seguinte nomenclatura: PROJ. 25000 (25 mil).

Table with 3 columns: No., Description, and Date. Contains project information and revision details.

Departamento Penitenciário Nacional - DEPEN
Pentadecágua Federal de Mossoró - PFMO5
Rua da Liberdade, 15, km 11,6, Estação Mossoró, Mossoró - RN