

GUIDELINES FOR SUBMITTING CONTRIBUTIONS



2024/2025

01	What is The 3rd Journey?	03
02	Who can participate?	05
03	How do you participate?	07
04	How do you register?	09
05	Deadline for submissions and contact	12

INDEX



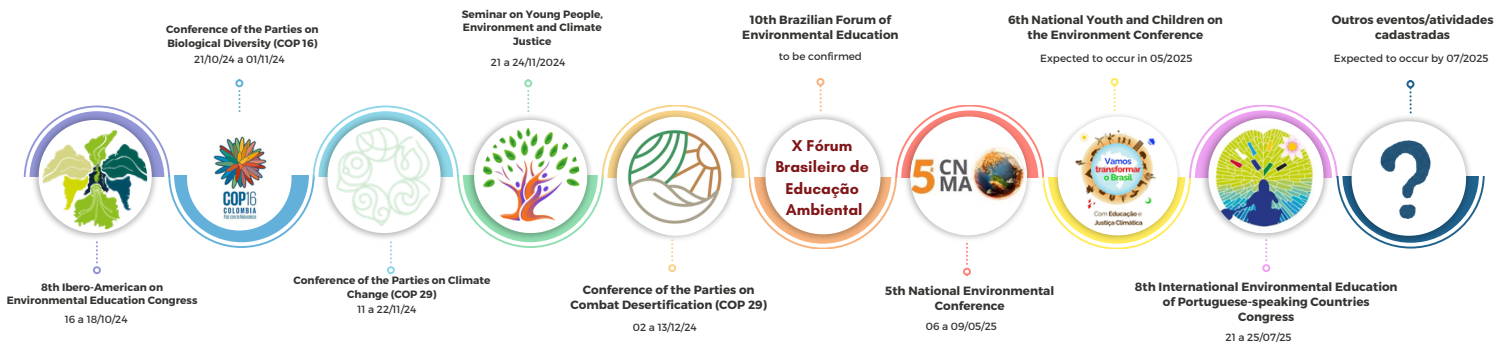
01

WHAT IS THE 3RD JOURNEY?



The 3rd Environmental Education Journey is an important process in building, a collective journey with stopovers inspiring initiatives such as dialog and importante contributions for the Environmental Education field. This is leading up to COP 30, which will take place in Belem City, Para State, Brazil.

For this purpose a number of stopovers were identified:



In addition to those events or activities, other activities can be included as part of our Journey, on which it does duly registered and authorized by our site MMA.



02

WHO CAN PARTICIPATE?



1

Participants in those events listed as stopovers.



2

Organizers of events or activities based on Environmental Education that failed to become recognized stopover as part of the 3rd Journey



03

HOW DO YOU PARTICIPATE?



You can take part in the events already identified and also propose the inclusion of a new one, just by meeting a easy criteria:

1

You can mobilize a group of at least five people to prepare the contributions.

2

Please, you fill in our web form. Contributions collected such as photos, videos and drawings must follow The 3rd Journey on reference documents.

For example: Paris Agreement, Earth Charter, National Policy on Environmental Education (Law 9.795/99), and others documents available on our Journey's website (DEA/MMA).

3

By submitting your contributions to Department of Environmental Education and Citizenship (DEA), you agree to assign your all intellectual property and image rights to the public.

4

It is essential that contributions respect and promote diversity

Such as gender, ethnicity, race, color, religion and national origin.



04

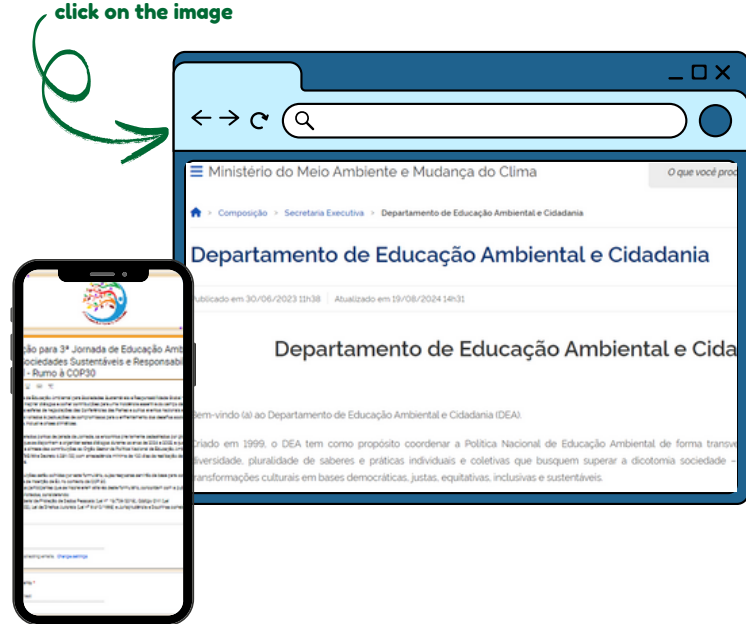
HOW DO YOU REGISTER?



Just go to the Department of Environmental Education and Citizenship (DEA) page on website of the Ministry of the Environment and Climate Change (MMA).

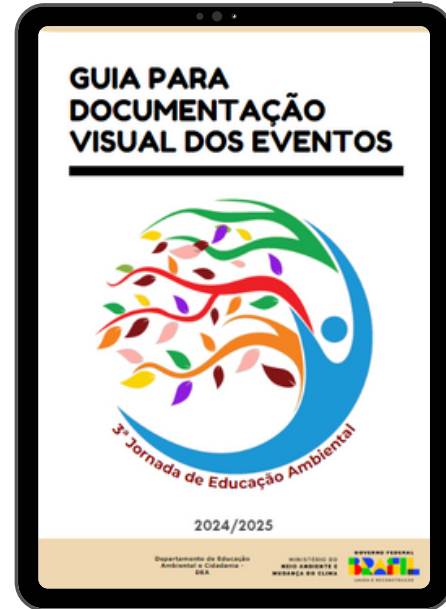
Go to the Conference Tab of internet and click on Registration Form.

click on the image



Hey! Don't forget! It's important to read our Visual Documentation Guide.

At our the site and you'll find various guidelines for collecting images and videos, as well as super-important recommendations.



05

**DEADLINE FOR
SUBMISSIONS
AND CONTACT**



Pay Attention



The form for submitting contributions will remain open until **July 2025**. If the Journey organizers is interested, this deadline may be extended.

To keep track of the deadline, you go to the Journey tab on the DEA/MMA's website.

If you have any question or need a help, please contact the Department of Environmental Education and Citizenship (DEA):

jornadaea@mma.gov.br

Phone: +55 (61) 2028-1207.





MINISTÉRIO DO
MEIO AMBIENTE E
MUDANÇA DO CLIMA

