

INVESTMENT ATTRACTION FOR REGIONAL INTEGRATION AND DEVELOPMENT INITIATIVES



Strategic Vision and Portfolio
of Projects

MINISTÉRIO DA
INTEGRAÇÃO E DO
DESENVOLVIMENTO
REGIONAL

GOVERNO FEDERAL
BRASIL
UNIÃO E RECONSTRUÇÃO



INVESTMENT ATTRACTION FOR REGIONAL INTEGRATION AND DEVELOPMENT INITIATIVES

Presentation

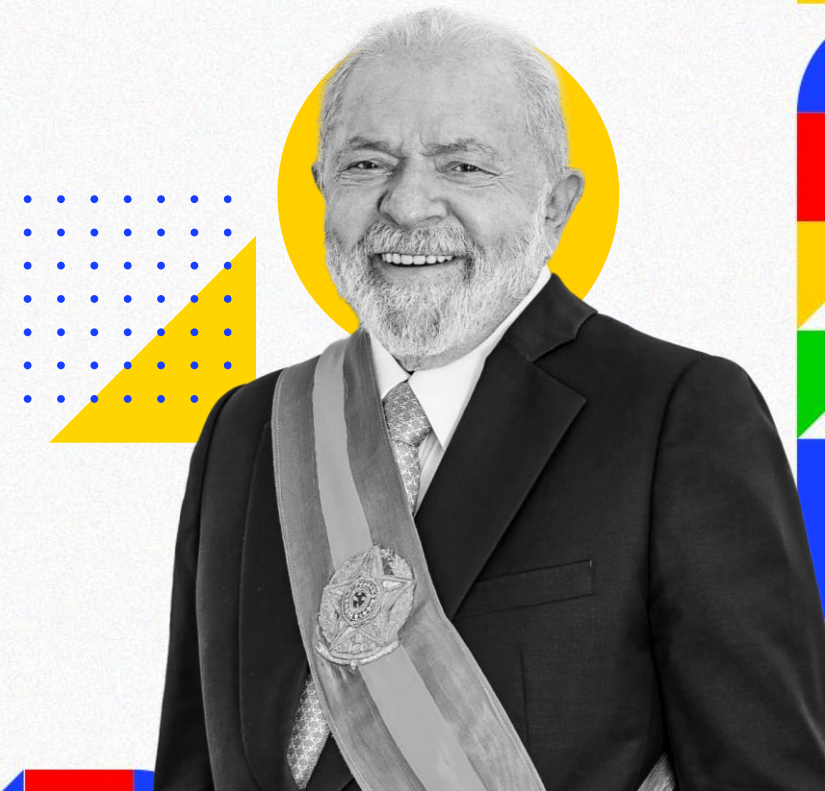
The Federal Government, through the Ministry of Integration and Regional Development (MIDR), plays a crucial role in building a fairer country. Its responsibilities encompass a wide range of tasks, from ensuring the progress of all regions of the country, especially the most vulnerable ones, to ensuring the effective management of water resources and infrastructure, as well as safeguarding water security across the entire territory.

Among its competencies, there is the implementation and management of irrigation and river basin revitalization projects, as well as inclusive and sustainable development. Additionally, MIDR is tasked with protecting and defending the population through risk prevention and disaster management, contributing to civil security. The Ministry's entire priority agenda is aligned with the 2030 Agenda and contributes to the achievement of the Sustainable Development Goals, especially SDGs 1, 2, 6, 8, 9, 10, 11, 13, and 17.

"As I never tire of repeating, Brazil is back. Our country is back to make its rightful contribution to addressing the key global challenges. We have reinstated the universalism of our foreign policy, characterized by respectful dialogue with all.

...
Reducing inequalities within and among countries should become the synthesis goal of the 2030 Agenda. Taking action against climate change entails thinking about tomorrow and addressing historical inequalities."

President Luiz Inácio Lula da Silva



TO FULFILL THESE RESPONSIBILITIES, THE MINISTRY ALSO RELIES ON THE FOLLOWING AFFILIATED ENTITIES:

1. Superintendence for the Development of the Amazon - Sudam;
2. Superintendence for the Development of the Northeast - Sudene;
3. Superintendence for the Development of the Midwest - Sudeco.
4. National Department of Works Against Droughts - Dnocs;
5. National Water and Basic Sanitation Agency - ANA; and
6. Public company: São Francisco and Parnaíba Valleys Development Company - Codevasf.

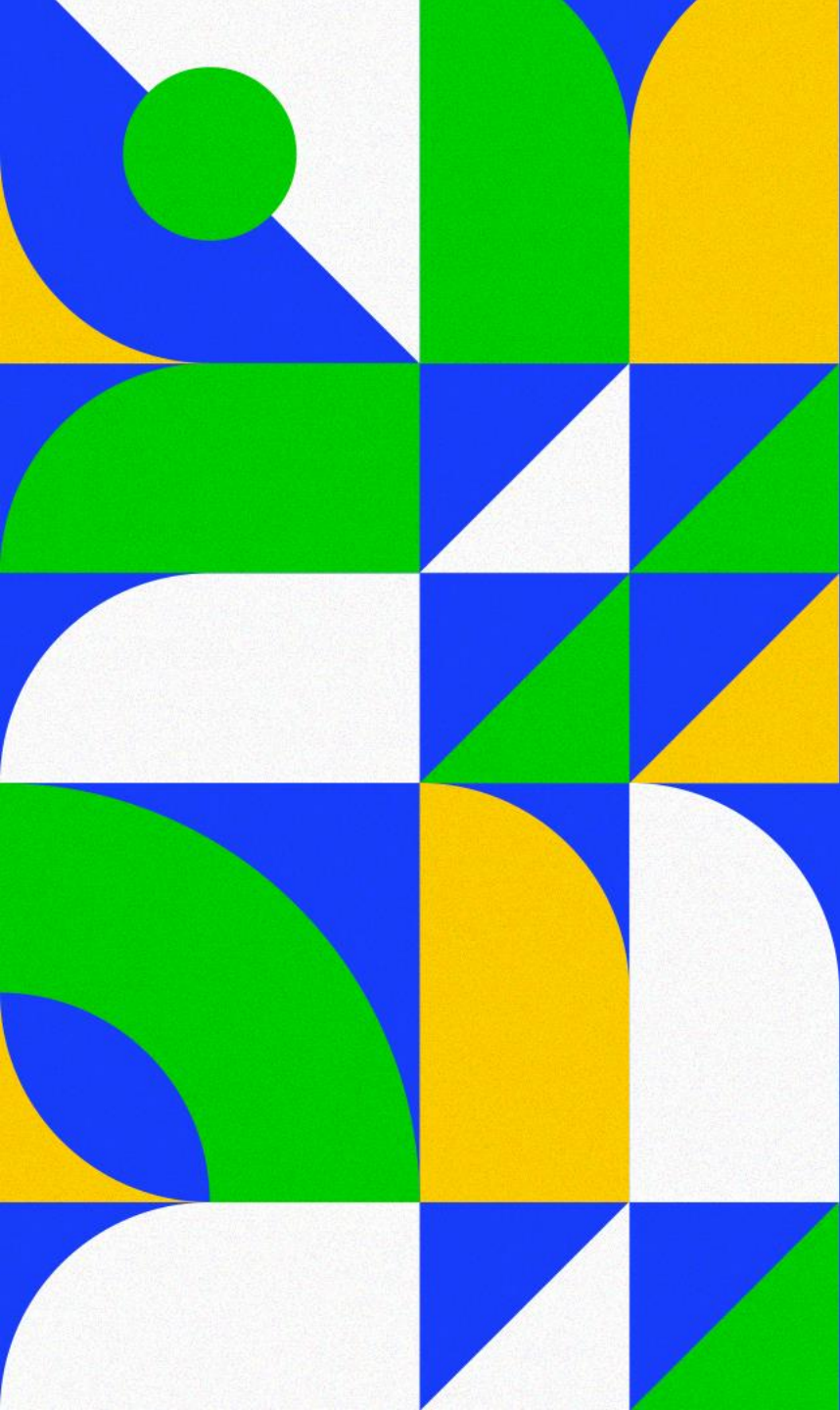
The Ministry recognizes the importance of establishing strong public policies and achieving tangible results for society. With this focus, it has outlined a strategic portfolio that reflects its priorities and action objectives. This portfolio aligns with the New Growth Acceleration Program (PAC) launched by the Federal Government, aiming to reduce regional disparities, promote sustainable and inclusive development, and enhance the quality of life for the Brazilian population.

The Ministry of Integration and Regional Development focuses on infrastructure projects that not only boost employment and economic activity but also catalyze the sustainable development of new regions and attract long-term investments.

By optimizing its projects to attract private investment while maintaining efficiency and rigorous controls, the Ministry aims to improve the lives of vulnerable communities, stimulate economic and social progress in needy regions, and provide quality services to the population. It also seeks to contribute to measures that reduce the impact of climate change and, in alignment with the 2030 Agenda, work "so that people everywhere can enjoy peace and prosperity.

NOVO **PAC**
DESENVOLVIMENTO E SUSTENTABILIDADE



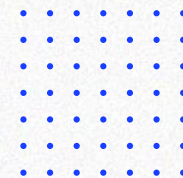


WHY INVEST IN BRAZIL?

Why Invest in Brazil?

With the largest economy in Latin America and a population exceeding 200 million inhabitants, Brazil occupies a territorial expanse of 8,516,000 km², offering a business-friendly environment.

Source: Investment Partnerships Program - PPI (<https://www.ppi.gov.br/invista-no-brasil/>)



ECONOMY

Brazil boasts the largest economy in Latin America (2021) and ranks among the world's top 15 economies. It stood as the 13th largest economy globally in 2021, with a nominal GDP of US\$ 1.5 trillion.

Source: Ipeadata

ECONOMY

Second-best economic climate rating in Latin America (2021).

Source: FGV IBRE.

TOURISM POTENTIAL

Brazil's export rate of tourism services in 2021 is 26% higher than the Latin American

Source: IBGE

SUPPORT FOR STATES AND MUNICIPALITIES

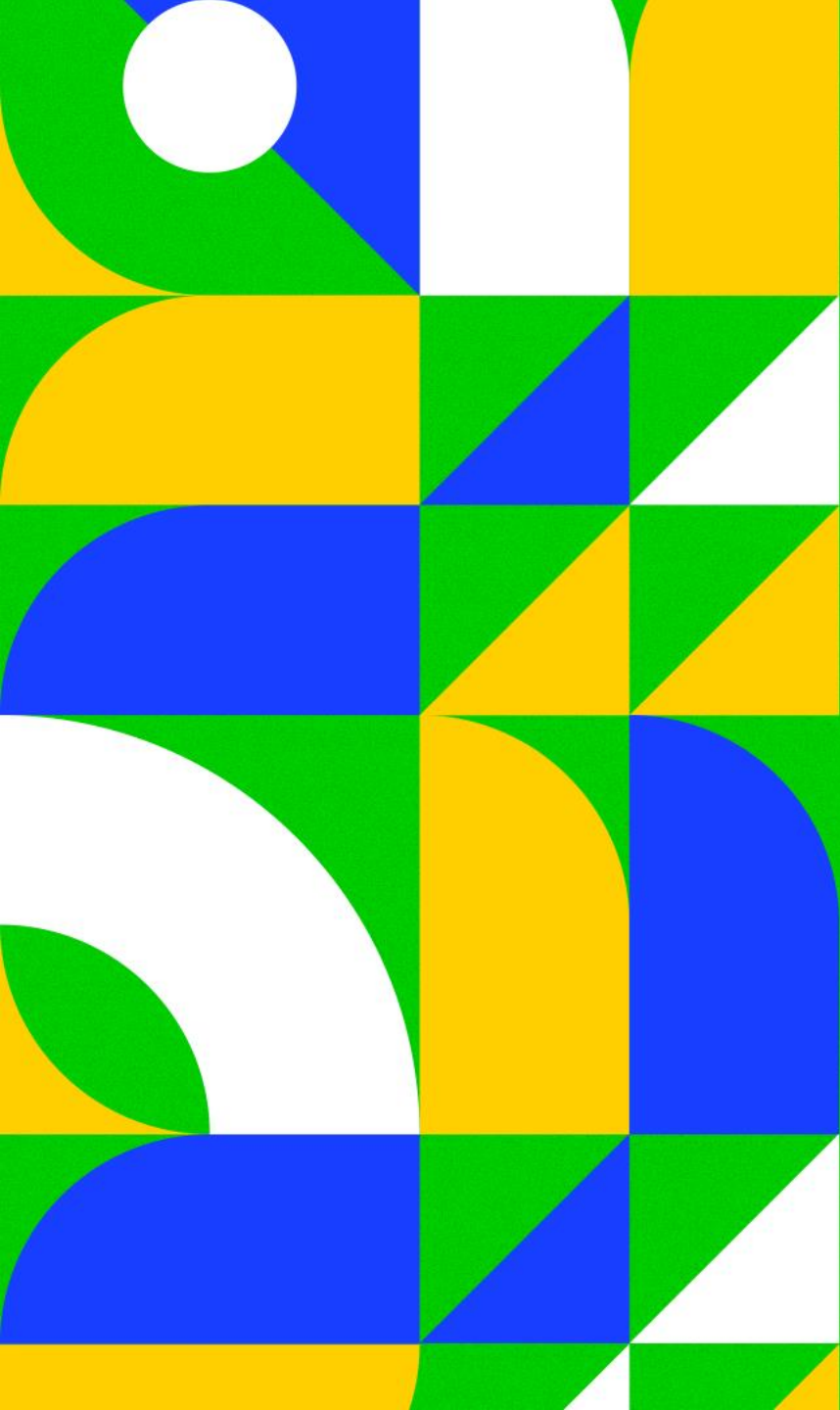
Benefits for states and municipalities through Public-Private Partnerships, ensuring access to essential services for Brazilians.

Source: Portal PPI

NATURAL RESERVES

Brazil is composed of six distinct biomes: Amazon, Caatinga, Cerrado, Atlantic Forest, Pampa, and Pantanal. It possesses the world's largest biodiversity heritage, with 41,000 cataloged species, over 100,000 invertebrate species, and approximately 8,200 vertebrates.

Source: MMA



**FEDERAL GOVERNMENT
MEASURES TO EXPAND
PRIVATE CAPITAL
PARTICIPATION**

FEDERAL GOVERNMENT OF BRAZIL

INSTITUTIONAL MEASURES - PAC 2023

Normative, management, and planning acts that decisively contribute to the sustainable expansion of public and private investments in Brazil.

Source: <https://www.gov.br/casacivil/novopac/medidas-institucionais>



Enhancement of Regulatory Environment
and Environmental Licensing

Expansion of Credit and Economic
Incentives

Enhancement of Concession and
Public-Private Partnerships
Mechanisms

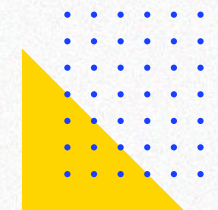
Incentives for Ecological
Transition

Planning, Management, and
Public Procurement

INVESTMENT AXES - PAC 2023

Normative, management, and planning actions that decisively contribute to the sustained expansion of public and private investments in Brazil.

Source: www.gov.br/casacivil/novopac/



STRUCTURAL INITIATIVES OF MIRD

Normative, management, and planning actions

Regional Integration Routes (sustainable and inclusive development)

Borders (sustainable and inclusive development)

Water for All: Water Security and Basin Revitalization

Irrigation and Basin Revitalization (Água para Todos)

Prevention and Disaster Risk Reduction and Humanitarian Cooperation (Sustainable and Resilient Cities)

Modernization of mechanisms to attract national and international financial resources

Sustainable Regional Infrastructure Development Fund - SRIDF

Innovations in climate change adaptation strategies, with the maintenance of vulnerability platform - Climate Adapt

National Irrigation Policy

Water Pact - Pact of the National Water and Sanitation Agency and the Ministry with all state governments



STRUCTURAL INITIATIVES OF MIDR AND THE NATIONAL WATER AND SANITATION AGENCY

National reference standards for the basic sanitation sector

- Attraction of investments for the universalization of services
- Enhancement of the regulatory environment and the business environment of the sector
- Greater predictability, legal security, technical robustness, and transparency in regulation
- Establishment of parameters based on national and international best practices
- Definition of a quality standard in the provision of services by service operators
- Reduction of transaction costs for public and private service providers
- Regulatory agenda and involvement of stakeholders in the process of developing reference standards
- Progressiveness and consideration of local and regional peculiarities
- Capacity building for subnational managers and regulators to implement the sector's legal framework
- Adherence to reference standards by subnational regulatory entities and service providers, where applicable, is a condition for accessing federal resources.



STRUCTURAL INITIATIVES OF MIDR AND THE NATIONAL WATER AND SANITATION AGENCY WATER GOVERNANCE PACT

Strengthening the institutional relationship between ANA and the Federative Units for the improvement of water resources management, sanitation service regulation, and the implementation of dam safety policy.

1

Enhance the interaction of water resources management in shared river basins between the Federal Government and the States.

2

Improve and harmonize the regulation of sanitation services through the issuance of reference standards for the sector.

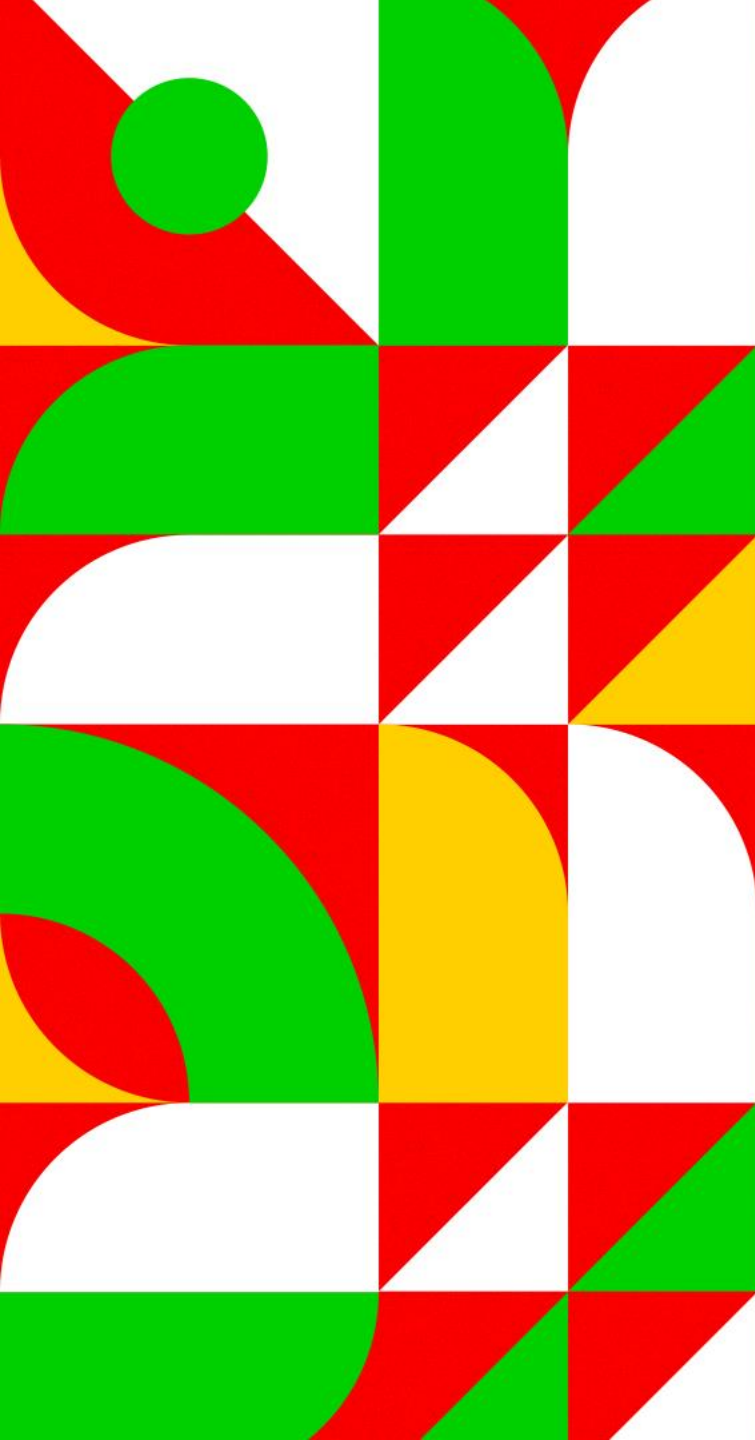
3

Enhance the mechanisms for the management, operation, and maintenance of water infrastructure, including those related to dam safety.



COMMITMENT TO THE AGENDA 2030





COMMITMENT TO INTERNATIONAL BEST PRACTICES

COMMITMENT TO INTERNATIONAL BEST PRACTICES IN PROMOTING AND PRIORITIZING QUALITY INVESTMENTS

The key elements of international best practices are considered in the development of regional integration and development initiatives. These elements include:

Ensuring the provision of quality public services for the population.

Legal certainty for investors.

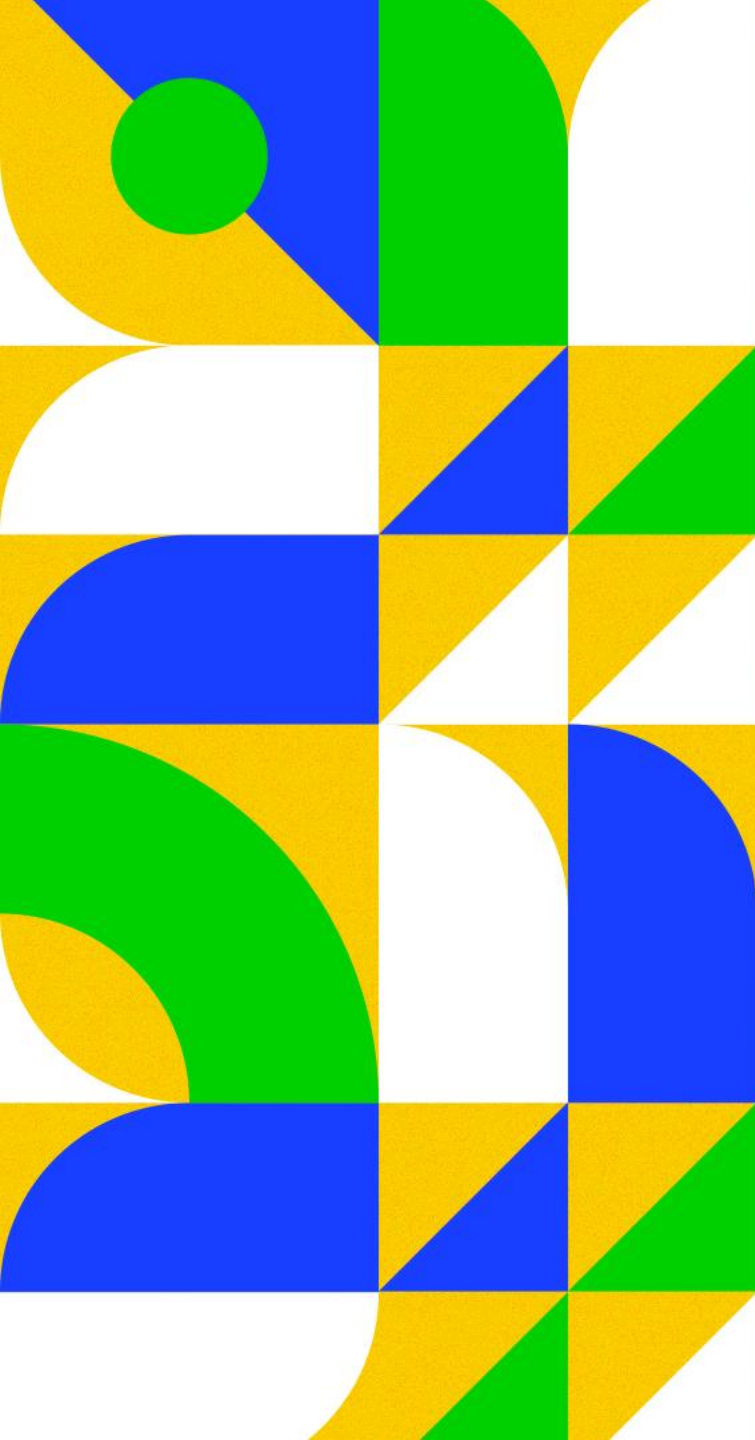
Attention to the latest international certifications for sustainable investments (ESG, SRI, People-First Public Private Partnership).

Financial engineering in accordance with the latest blended finance principles

Modern project governance.

Profitability and predictability for private capital.

A network of national and international institutional partners.



MODELS FOR PRIVATE CAPITAL PARTICIPATION

MODELOS PARA PARTICIPAÇÃO DO CAPITAL PRIVADO

ARRANJOS E MODELOS TRADICIONAIS COM GOVERNANÇA E ENGENHARIA FINANCEIRA APERFEIÇOADOS



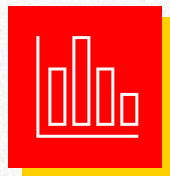
Public-private
Partnership (Ppp)



Municipal Consortia For
Ppp



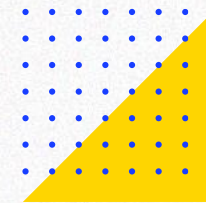
Concessions

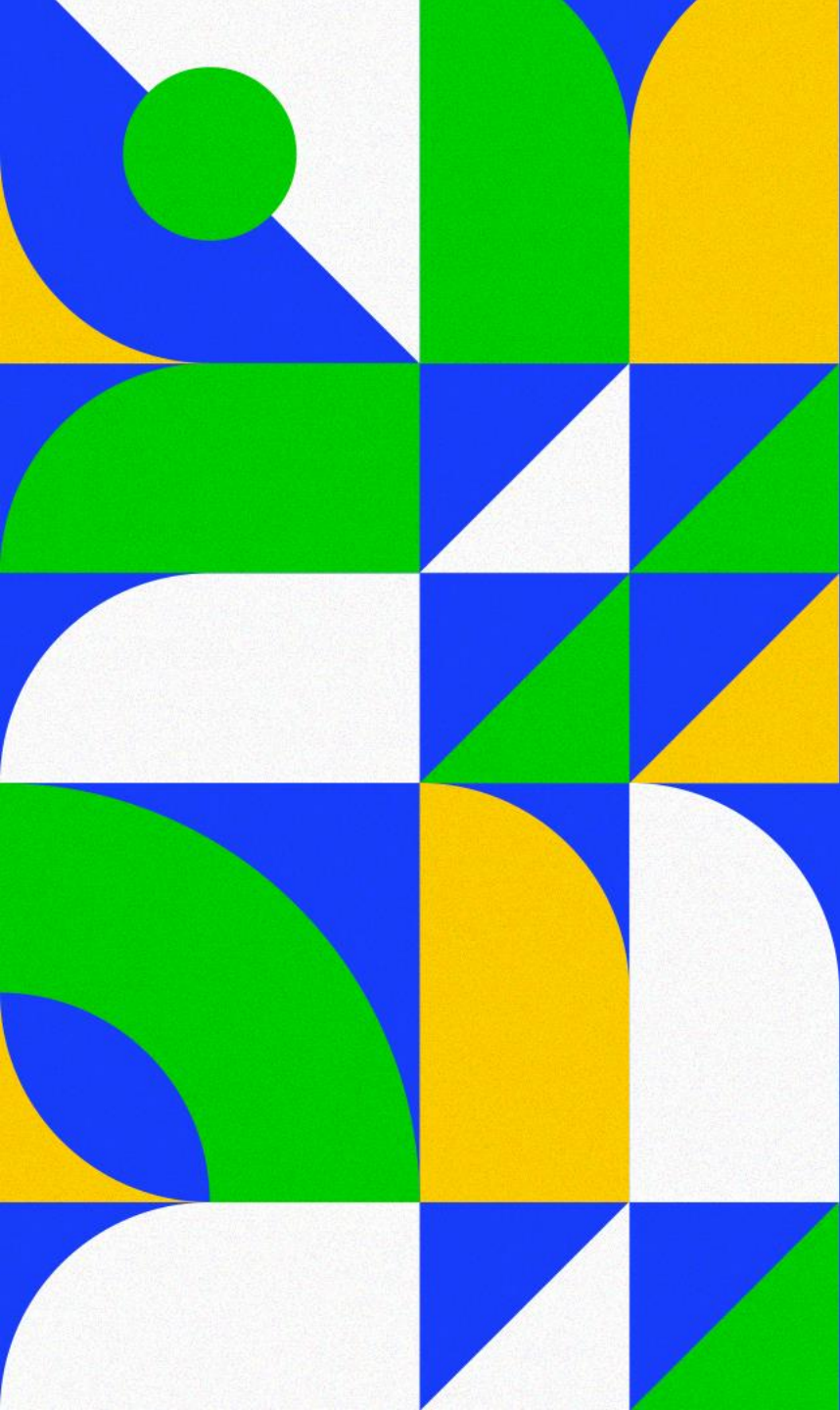


Private Project Financing Through Government
Funds
Regional Development Funds



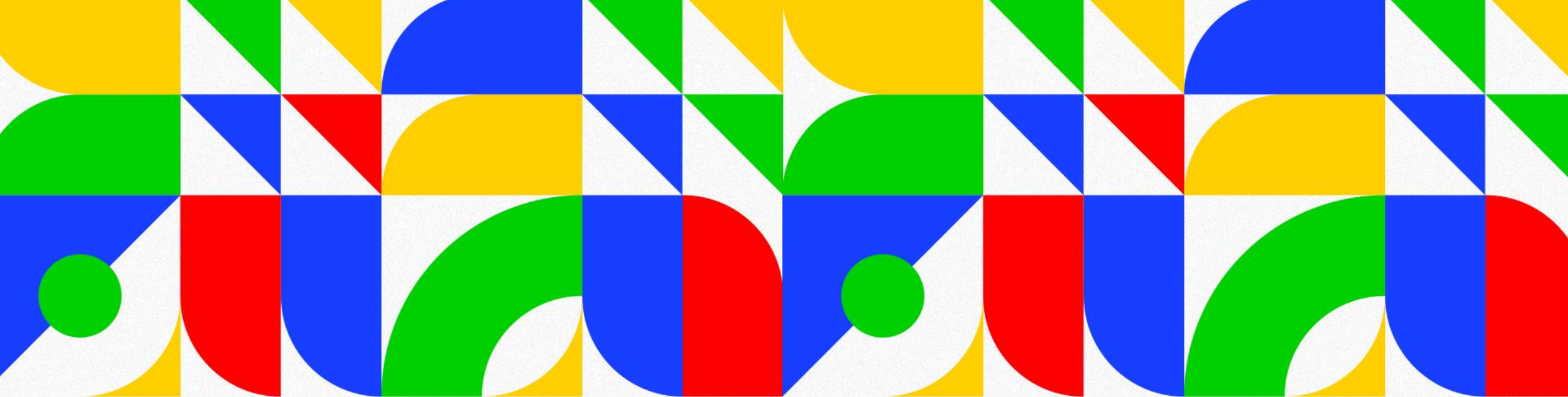
Concessions





PRIORITY PROJECTS



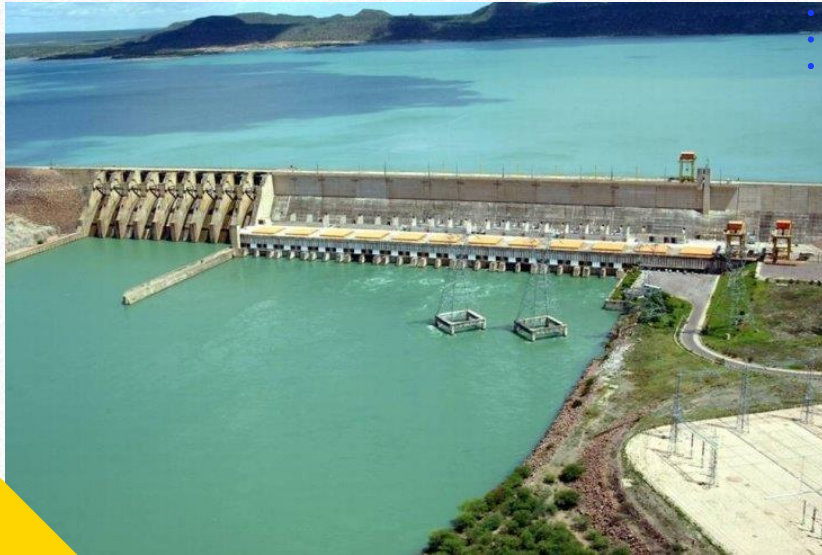


**HYDRAULIC
INFRASTRUCTURE
TRANSPOSITION**

SAO FRANCISCO RIVER INTEGRATION PROJECT - SFIP

The São Francisco River Integration Project is the largest water infrastructure project in the country, part of the National Water Resources Policy. Spanning 477 kilometers in two axes (East and North), the undertaking will ensure water security for 12 million people in 390 municipalities across the states of Pernambuco, Ceará, Rio Grande do Norte, and Paraíba, where drought is frequent.

The two axes encompass the construction of 13 aqueducts, nine pumping stations, 27 reservoirs, nine 230-kilowatt substations, 270 kilometers of high-voltage transmission lines, and four tunnels. In addition to the main axes (north and east), the project also includes the interstate branches of Apodi and Piancó.



For further information, please visit ppi.gov.br.

Approximately R\$ 14 billion has been invested in the project so far. The structuring of the studies is led by BNDES, including the hiring of specialized technical services necessary for the project's modeling.

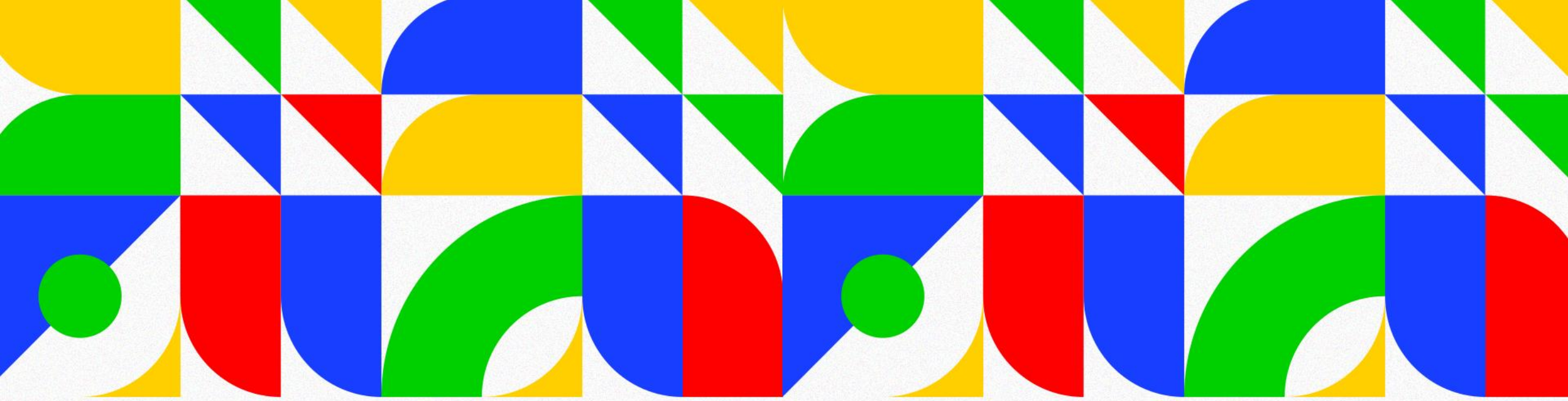
The chosen modality is administrative concession, with a term of 20 years, subject to review until the completion of the ongoing studies.

Currently, the forecast for the publication of the Tender is in 2Q/25, with the Auction scheduled for 3Q/25.

PRIORITARY PROJECTS IN REGIONAL INTEGRATION AND DEVELOPMENT INITIATIVES



PROJECT TITLE	SÃO FRANCISCO RIVER INTEGRATION PROJECT WITH THE NORTHERN NORTHEASTERN WATERSHEDS	
DESCRIPTION	<p>The São Francisco River Integration Project with the Northern Northeastern Watersheds - PISF is a hydraulic infrastructure project that captures water from the São Francisco River and conveys it to watersheds in the northern northeastern region of the states of Ceará, Paraíba, Pernambuco, and Rio Grande do Norte. Its primary objective is to ensure water security by integrating watersheds into a region that suffers from water scarcity and irregular rainfall: the semi-arid region of the Northeast. The project is organized into two main water transfer axes: the Northern Axis (Sections I and II) and the Eastern Axis (Section V) and associated branches. BNDES is responsible for conducting the studies to manage PISF, including the hiring of specialized technical services necessary for project modeling.</p>	
PPI LINK	https://www.ppi.gov.br/projetos/pisf-projeto-de-integracao-do-rio-sao-francisco-com-as-bacias-hidrograficas-do-nordeste-setentrional/	
QUALIFICATION DATE	05/08/2019	
QUALIFICATION TYPE	Investment Partnerships Program (PPI)	
OPERATIONAL MODALITY	FEDERAL PROJECT	
TERM	20 YEARS	
ASSET TYPE	Existing Asset	
BENEFICIARY POPULATION	12.000.000	X
ESTIMATED VALUE	R\$ 13.2 billion for complementary works	



**HYDRAULIC
INFRASTRUCTURE
IRRIGATION**

PRIORITARY PROJECTS IN REGIONAL INTEGRATION AND DEVELOPMENT INITIATIVES



PROJECT TITLE	VALE DO JEQUITAI/MG
DESCRIPTION	Qualified under PPI through Resolution No. 216, dated December 16, 2021, the 7 hydroagricultural and irrigation projects aim, through the development of water infrastructure such as dams, canals, pumps, and pipelines, to expand irrigation services and, in the case of the hydroagricultural project, also provide water supply and generate energy, bringing economic and social development to the most needy regions of the Brazilian semi-arid area. Partnerships with the private sector will enable the resumption of the implementation of these projects, which was halted due to budgetary constraints, as well as the incorporation of new technologies and increased productivity.
LINK PPI	https://www.ppi.gov.br/projetos/vale-do-jequitai-mg/
QUALIFICATION DATE	16/12/2021
AUCTION DATE	01/03/2024
QUALIFICATION TYPE	PPI
OPERATIONAL MODALITY	Concession/Authorization
CAPEX	1.506.000.000,00
IMPACT	Availability of quality water for various uses.
CAPACITY	10,200 irrigable hectares
BENEFICIARIES	Citizens and municipalities of the Jequitai Valley, MG
AUCTION CRITERIA	Largest concession

PRIORITARY PROJECTS IN REGIONAL INTEGRATION AND DEVELOPMENT INITIATIVES



PROJECT TITLE	VALE DO IUIÚ /BA	
DESCRIPTION	The projects aim, through the development of hydraulic infrastructure such as dams, canals, pumps, and pipelines, to expand irrigation services and, in the case of the hydro-agricultural project, also provide water supply and generate energy, bringing economic and social development to the most needy regions of the Brazilian semi-arid area. Partnerships with the private sector will allow the resumption of the implementation of these projects, which was interrupted due to budgetary constraints, in addition to the incorporation of new technologies and increased productivity.	
LINK PPI	https://www.ppi.gov.br/projetos/vale-do-iuiu-ba/	
QUALIFICATION DATE	16/12/2021	
QUALIFICATION TYPE	PPI	X
OPERATIONAL MODALITY	Concession/Authorization	
CAPEX	1.750.000.000,00 (estimate)	
IMPACT	Availability of quality water for various purposes.	
CAPACITY	51,705 hectares of irrigable area	
BENEFICIARIES	Citizens and municipalities of Vale do Iuiú /BA	
AUCTION CRITERIA	Highest bid	

PRIORITARY PROJECTS IN REGIONAL INTEGRATION AND DEVELOPMENT INITIATIVES



PROJECT TITLE	PLATÔS DE GUADALUPE/PI
DESCRIPTION	The projects aim, through the development of hydraulic infrastructure such as dams, canals, pumps, and pipelines, to expand irrigation services and, in the case of the hydro-agricultural project, also provide water supply and generate energy, bringing economic and social development to the most needy regions of the Brazilian semi-arid area. Partnerships with the private sector will allow the resumption of the implementation of these projects, which was interrupted due to budgetary constraints, in addition to the incorporation of new technologies and increased productivity.
LINK PPI	https://www.ppi.gov.br/projetos/platosdeguadalupepi/
QUALIFICATION DATE	16/12/2021
PUBLIC HEARING DATE	Maio/2024
QUALIFICATION TYPE	PPI X
OPERATIONAL MODALITY	Concession/Authorization
CAPEX	574.000.000,00
IMPACT	10.238 hectares to be implemented
CAPACITY	14,000 hectares of irrigated areas
BENEFICIARIES	Guadalupe Municipality
AUCTION CRITERIA	Highest bid

PRIORITARY PROJECTS IN REGIONAL INTEGRATION AND DEVELOPMENT INITIATIVES



PROJECT TITLE	TABULEIROS LITORÂNEOS/PI
DESCRIPTION	The projects aim, through the development of hydraulic infrastructure such as dams, canals, pumps, and pipelines, to expand irrigation services and, in the case of the hydro-agricultural project, also provide water supply and generate energy, bringing economic and social development to the most needy regions of the Brazilian semi-arid area. Partnerships with the private sector will allow the resumption of the implementation of these projects, which was interrupted due to budgetary constraints, in addition to the incorporation of new technologies and increased productivity.
LINK PPI	https://www.ppi.gov.br/projetos/tabuleiroslitoraneos/pi/
QUALIFICATION DATE	16/12/2021
PUBLIC HEARING DATE	June 2024
QUALIFICATION TYPE	PPI
OPERATIONAL MODALITY	Concession/Authorization
CAPEX	300.000.000,00
IMPACT	Availability of quality water for various purposes.
CAPACITY	8,183 irrigated hectares
BENEFICIARIES	Municipalities of Parnaíba and Buriti Lopes
AUCTION CRITERIA	Highest bid

PRIORITARY PROJECTS IN REGIONAL INTEGRATION AND DEVELOPMENT INITIATIVES



PROJECT TITLE	TABULEIRO DE SÃO BERNARDO /MA
DESCRIPTION	<p>The projects aim to expand irrigation services through the development of hydraulic infrastructure, including dams, canals, pumps, and pipelines. In the case of the hydro-agricultural project, they also aim to provide water supply and generate energy, bringing economic and social development to the most needy regions of the Brazilian semi-arid area.</p> <p>Partnerships with the private sector will enable the resumption of the implementation of these projects, which was interrupted due to budgetary constraints, in addition to the incorporation of new technologies and increased productivity.</p>
LINK PPI	https://www.ppi.gov.br/projetos/tabuleiros-de-sao-bernardo-ma/
QUALIFICATION DATE	16/12/2021
PUBLIC HEARING DATE	July 2024
QUALIFICATION TYPE	PPI
OPERATIONAL MODALITY	Concession/Authorization
CAPEX	126.000.000,00
IMPACT	5,598 hectares to be implemented
CAPACITY	25,000 hectares of total irrigated area
BENEFICIARIES	Municipalities of Magalhães de Almeida and Araisos
AUCTION CRITERIA	Highest bid

DNOCS

National Department of Works Against Droughts

The National Department of Works Against Droughts (DNOCS) is a federal autarchy under the Ministry of Development and Regional Integration, with its central administration located in Fortaleza, Ceará.

This autarchy plays a crucial role in water management, particularly in regions affected by drought, operating in all states in the Northeast of Brazil and the north of Minas Gerais. Established in 1909, its primary mission is to carry out projects and works to mitigate the effects of drought, promoting sustainable development and water security.

The main function of DNOCS is to create tools to support the development of productive activities that are compatible with the preservation, conservation, and sustainable management of natural resources. The agency's scope of operation includes a wide range of activities, including the construction of dams, irrigation systems, and other water-related infrastructures. The Department also invests in research and studies to improve techniques for coexisting with the semi-arid climate, seeking innovative solutions to address climate challenges. It also manages Public Irrigation Projects, which strengthen agriculture and the livelihoods of rural communities.

In addition to its core water-related activities, DNOCS plays a significant role in promoting aquaculture. The institution is dedicated to research and the development of techniques that boost fish farming in the region, contributing to economic diversification and food security for communities. The implementation of fish stocking programs, coupled with sustainable strategies, underscores DNOCS's commitment not only to addressing drought challenges but also to promoting activities that strengthen local economies and provide livelihoods to those in need.



PRIORITARY PROJECTS IN REGIONAL INTEGRATION AND DEVELOPMENT INITIATIVES



PROJECT TITLE	Santa Cruz do Apodi (Apodi Plateau), Rio Grande do Norte
DESCRIPTION	<p>The projects aim, through the development of hydraulic infrastructure such as dams, canals, pumps, and pipelines, to expand irrigation services and, in the case of the hydro-agricultural project, also provide water supply and generate energy, bringing economic and social development to the most needy regions of the Brazilian semi-arid area.</p> <p>Partnerships with the private sector will enable the resumption of the implementation of these projects, which was interrupted due to budgetary constraints, in addition to the incorporation of new technologies and increased productivity.</p>
LINK PPI	https://www.ppi.gov.br/projetos/chapada-do-apodi-rn/
QUALIFICATION DATE	16/12/2021 - Feasibility study contracting awaiting definition of the PISF modeling
QUALIFICATION TYPE	PPI
OPERATIONAL MODALITY	Concession/Authorization
CAPEX	374.000,000,00
IMPACT	5,200 hectares in the 1st phase and 4,036 hectares in the 2nd phase
CAPACITY	9,236 irrigated hectares
BENEFICIARIES	Municipalities of Apodi and Felipe Guerra/RN
AUCTION CRITERIA	Highest bid

PRIORITARY PROJECTS IN REGIONAL INTEGRATION AND DEVELOPMENT INITIATIVES



PROJECT TITLE	BAIXO ACARAÚ/CE
DESCRIPTION	The projects aim, through the development of hydraulic infrastructure such as dams, canals, pumps, and pipelines, to expand irrigation services and, in the case of the hydro-agricultural project, also provide water supply and generate electricity, bringing economic and social development to the most needy regions of the Brazilian semi-arid area.
LINK PPI	https://www.ppi.gov.br/projetos/baixo-acarau-ce/
QUALIFICATION DATE	16/12/2021 - Feasibility studies to be contracted.
QUALIFICATION TYPE	PPI X
OPERATIONAL MODALITY	FEDERAL PROJECT
CAPEX	93.000.000,00
IMPACT	4,164 ha to be implemented
CAPACITY	12,603 ha irrigated
BENEFICIARIES	Municipalities of Acaraú, Bela Cruz, and Marco
AUCTION CRITERIA	Highest bid

PRIORITARY PROJECTS IN REGIONAL INTEGRATION AND DEVELOPMENT INITIATIVES



PROJECT TITLE	JAGUARIBE-APODI / CE
DESCRIPTION	The projects aim, through the development of water infrastructure such as dams, canals, pumps, and pipelines, to expand irrigation services and, in the case of the hydro-agricultural project, also provide water supply and generate energy, bringing economic and social development to the neediest regions of the Brazilian semi-arid area. Partnerships with the private sector will enable the resumption of the implementation of these projects, which was interrupted due to budgetary constraints, as well as the incorporation of new technologies and increased productivity.
LINK PPI	In pre-qualification phase
QUALIFICATION TYPE	PPI
OPERATIONAL MODALITY	Federal Project
CAPEX	200.000.000,00
IMPACT	4,000 hectares to be developed
CAPACITY	13,000 irrigated hectares
BENEFICIARIES	Municipalities of Limoeiro do Norte and Quixeré/CE
AUCTION CRITERIA	N/A

PRIORITARY PROJECTS IN REGIONAL INTEGRATION AND DEVELOPMENT INITIATIVES



PROJECT TITLE	ARARAS NORTE/CE
DESCRIPTION	<p>The projects aim, through the development of water infrastructure such as dams, canals, pumps, and pipelines, to expand irrigation services. In the case of the hydro-agricultural project, it also includes water supply and energy generation, bringing economic and social development to the most needy regions of the Brazilian semi-arid.</p> <p>Partnerships with the private sector will enable the resumption of the implementation of these projects, which was interrupted due to budgetary constraints, as well as the incorporation of new technologies and increased productivity.</p>
LINK PPI	In pre-qualification phase
QUALIFICATION TYPE	PPI
OPERATIONAL MODALITY	Federal Project
CAPEX	120.000.000,00
IMPACT	3,300 hectares to be developed
CAPACITY	6,400 irrigated hectares
BENEFICIARIES	Municipalities of Varjota and Reriutaba/CE
AUCTION CRITERIA	N/A

PRIORITARY PROJECTS IN REGIONAL INTEGRATION AND DEVELOPMENT INITIATIVES



PROJECT TITLE	MOXOTÓ/PE
DESCRIPTION	<p>The projects aim, through the development of water infrastructure such as dams, canals, pumps, and pipelines, to expand irrigation services. In the case of the hydro-agricultural project, it also includes water supply and energy generation, bringing economic and social development to the most needy regions of the Brazilian semi-arid.</p> <p>Partnerships with the private sector will enable the resumption of the implementation of these projects, which was interrupted due to budgetary constraints, as well as the incorporation of new technologies and increased productivity.</p>
LINK PPI	In pre-qualification phase
QUALIFICATION TYPE	PPI
OPERATIONAL MODALITY	Federal Project
CAPEX	200.000.000,00
IMPACT	5,500 hectares to be developed
CAPACITY	8,500 irrigated hectares
BENEFICIARIES	Municipalities of Ibimirim and Inajá/PE
AUCTION CRITERIA	N/A

PRIORITARY PROJECTS IN REGIONAL INTEGRATION AND DEVELOPMENT INITIATIVES



PROJECT TITLE	BAIXO AÇÚ/RN
DESCRIPTION	<p>The projects aim, through the development of water infrastructure such as dams, canals, pumps, and pipelines, to expand irrigation services. In the case of the hydro-agricultural project, it also includes water supply and energy generation, bringing economic and social development to the most needy regions of the Brazilian semi-arid.</p> <p>Partnerships with the private sector will enable the resumption of the implementation of these projects, which was interrupted due to budgetary constraints, as well as the incorporation of new technologies and increased productivity.</p>
LINK PPI	In pre-qualification phase
QUALIFICATION TYPE	PPI
OPERATIONAL MODALITY	Federal Project
CAPEX	130.000.000,00
IMPACT	3,900 hectares to be developed
CAPACITY	6,000 irrigated hectares
BENEFICIARIES	Municipalities Ipanguaçu, Alto do Rogrigues and Afonso Bezerra/RN
AUCTION CRITERIA	N/A

PRIORITARY PROJECTS IN REGIONAL INTEGRATION AND DEVELOPMENT INITIATIVES

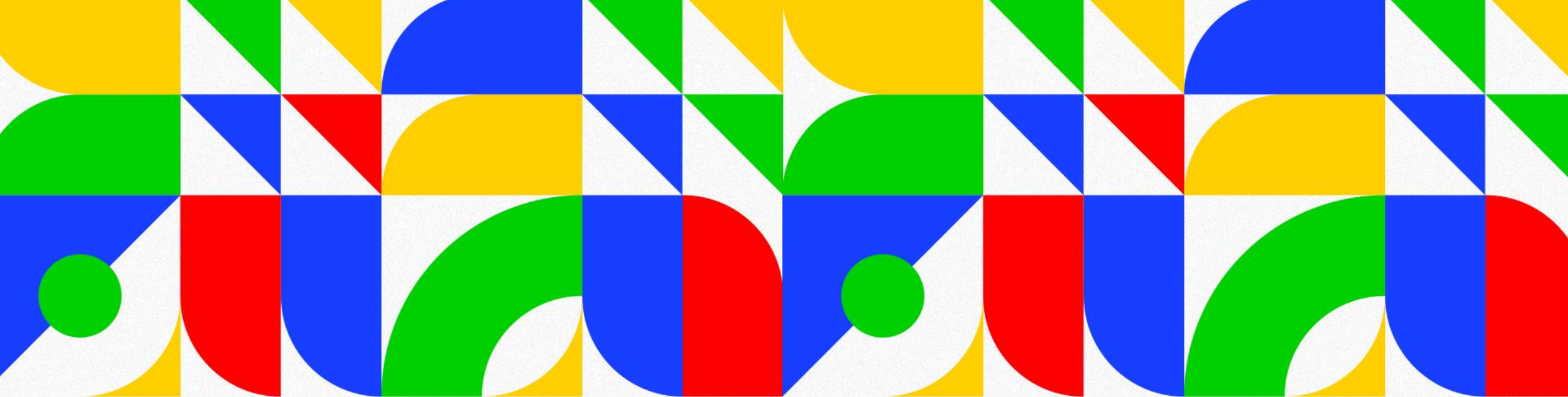


PROJECT TITLE	TABULEIROS DE RUSSAS/CE
DESCRIPTION	<p>The projects aim, through the development of water infrastructure such as dams, canals, pumps, and pipelines, to expand irrigation services. In the case of the hydro-agricultural project, it also includes water supply and energy generation, bringing economic and social development to the most needy regions of the Brazilian semi-arid.</p> <p>Partnerships with the private sector will enable the resumption of the implementation of these projects, which was interrupted due to budgetary constraints, as well as the incorporation of new technologies and increased productivity.</p>
LINK PPI	In pre-qualification phase
QUALIFICATION TYPE	PPI
OPERATIONAL MODALITY	Federal Project
CAPEX	150.000.000,00
IMPACT	15,500 hectares to be developed
CAPACITY	18,900 irrigated hectares
BENEFICIARIES	Municipalities of Russas, Limoeiro do Norte and Morada Nova/CE
AUCTION CRITERIA	N/A

PRIORITARY PROJECTS IN REGIONAL INTEGRATION AND DEVELOPMENT INITIATIVES



PROJECT TITLE	OPERATION, MAINTENANCE, MONITORING, AND EXPLOITATION OF DAMS IN THE RIO DE CONTAS BASIN, BAHIA
DESCRIPTION	<p>Considering the difficulty of the public sector in maintaining all dam infrastructures in a manner that keeps the overall danger level low, coupled with the multiple utilities of dams with revenue generation potential, there is the possibility of these dams being managed by private institutions. Therefore, it is proposed that the operation, maintenance, and monitoring of these projects be carried out through partnerships with the private sector, aiming to increase the participation of private investments compared to the public resources already invested in the sector.</p> <p>As a result, it is expected that the new players in this sector can contribute to the innovation and modernization of dam management as well as to the guarantee of their safety and the consequent fulfillment of their purposes.</p>
LINK PPI	In pre-qualification phase
QUALIFICATION TYPE	Concession or PPP in which the Public Authority bears the cost of part of the works. To be defined by Feasibility Studies.
OPERATIONAL MODALITY	Federal Project
CAPEX	514.000.000,00
IMPACT	7 dams, occupying a maximum area of 4,362.4 hectares
CAPACITY	Estimated revenue of R\$ 41,821,258.00 from photovoltaic energy generation on the water surface.
BENEFICIARIES	Municipalities of Tanhaçu, Mirante, Caetanos, Anagé, Caraíbas, Belo Campo, Aracatu, Rio de Contas, Livramento de Nossa Senhora, Dom Basílio, Condeúba, Piripá, Cordeiros, Poções, Bom Jesus da Serra, Tremedal, Cícero Almeida, Caculé, Rio do Antônio, and Guajeru, Bahia.
AUCTION CRITERIA	To be defined in the feasibility studies



**COMPANY FOR THE DEVELOPMENT OF
THE SAO FRANCISCO AND PARNÁIBA
VALLEYS - CODEVASF**

CODEVASF

COMPANY FOR THE DEVELOPMENT OF THE SÃO FRANCISCO AND PARNAÍBA VALLEYS

The Company for the Development of the São Francisco and Parnaíba Valleys – Codevasf is a public company under the Ministry of Integration and Regional Development – MIDR. Its mission is to promote integrated and sustainable regional development, contributing to the reduction of inequalities. This mission reflects the company's purpose as a driver of regional development, acting as a catalyst for the development of the regions it serves.

The company's area of operation covers 37% of the national territory, encompassing 2,688 municipalities in the river basins of the São Francisco, Parnaíba, Itapicuru, Mearim, Vaza-Barris, Paraíba, Mundaú, Jequiá, Tocantins, Munim, Gurupi, Turiaçu, Pericumã, Una, Real, Itapicuru, Paraguaçu, Araguari, Araguari, Jequitinhonha, Mucuri, and Pardo, involving the states of Amapá, Alagoas, Bahia, Ceará, Goiás, Maranhão, Mato Grosso, Minas Gerais, Pará, Paraíba, Pernambuco, Piauí, Rio Grande do Norte, Sergipe, Tocantins, and the Federal District, as provided for in Law No. 14,053 of September 8, 2020, which amended Law No. 6,088 of July 16, 1974.

Codevasf works to improve the quality of life and socio-economic development in its operational area, through direct execution or partnerships, with a significant number of actions related to segments such as the development of irrigated agriculture, revitalization of river basins, structuring productive activities, providing water for water security, and urban, rural, and logistical requalification.

The actions focus on strategic objectives aimed at improving the quality of life in society and reducing regional inequalities. The following are the main lines of business by strategic themes for the allocation of public resources aimed at contributing to the transformation of the reality of thousands of municipalities, with the effective delivery of works and actions for the benefit of society.



PRIORITARY PROJECTS IN REGIONAL INTEGRATION AND DEVELOPMENT INITIATIVES



PROJECT TITLE	JAÍBA PROJECT - Stages 3 and 4, Minas Gerais
DESCRIPTION	<p>The projects aim to expand irrigation services through the development of water infrastructure such as dams, canals, pumps, and pipelines. In the case of the hydro-agricultural project, it also includes water supply and energy generation, bringing economic and social development to the most needy regions of the Brazilian semi-arid.</p> <p>Partnerships with the private sector will enable the resumption of the implementation of these projects, which was interrupted due to budgetary constraints, as well as the incorporation of new technologies and increased productivity.</p>
LINK PPI	In pre-qualification phase
QUALIFICATION TYPE	PPI
OPERATIONAL MODALITY	Federal Project
CAPEX	To be defined in the feasibility studies.
IMPACT	21,934 hectares to be implemented.
CAPACITY	65,800 hectares irrigated
BENEFICIARIES	Municipalities of Jaíba, Matias Cardoso, and Verdelândia, Minas Gerais.
AUCTION CRITERIA	NA

PRIORITARY PROJECTS IN REGIONAL INTEGRATION AND DEVELOPMENT INITIATIVES



PROJECT TITLE	PONTAL NORTE - Area 20, Pernambuco
DESCRIPTION	<p>The projects aim to expand irrigation services through the development of water infrastructure such as dams, canals, pumps, and pipelines. In the case of the hydro-agricultural project, it also includes water supply and energy generation, bringing economic and social development to the most needy regions of the Brazilian semi-arid.</p> <p>Partnerships with the private sector will enable the resumption of the implementation of these projects, which was interrupted due to budgetary constraints, as well as the incorporation of new technologies and increased productivity</p>
LINK PPI	In pre-qualification phase
QUALIFICATION TYPE	PPI
OPERATIONAL MODALITY	Federal Project
CAPEX	To be defined in the feasibility studies.
IMPACT	3,115 hectares to be implemented
CAPACITY	4,128 hectares irrigated
BENEFICIARIES	Municipality of Petrolina and neighboring municipalities such as Lagoa Grande, Orocó, and Santa Maria da Boa Vista in the state of Pernambuco, and Juazeiro, Curaçá, Casa Nova, and Sobradinho in the state of Bahia.
AUCTION CRITERIA	NA

PRIORITARY PROJECTS IN REGIONAL INTEGRATION AND DEVELOPMENT INITIATIVES



PROJECT TITLE	SANTA BRÍGIDA IRRIGATION PROJECT, BAHIA
DESCRIPTION	<p>The projects aim to expand irrigation services through the development of water infrastructure such as dams, canals, pumps, and pipelines. In the case of the hydro-agricultural project, it also includes water supply and energy generation, bringing economic and social development to the most needy regions of the Brazilian semi-arid.</p> <p>Partnerships with the private sector will enable the resumption of the implementation of these projects, which was interrupted due to budgetary constraints, as well as the incorporation of new technologies and increased productivity</p>
LINK PPI	In pre-qualification phase
QUALIFICATION TYPE	PPI
OPERATIONAL MODALITY	Federal Project
CAPEX	To be defined in the feasibility studies.
IMPACT	15,506 hectares to be implemented
CAPACITY	11,274 hectares irrigated
BENEFICIARIES	Municipalities of Santa Brígida and Paulo Afonso, Bahia.
AUCTION CRITERIA	NA

PRIORITARY PROJECTS IN REGIONAL INTEGRATION AND DEVELOPMENT INITIATIVES



PROJECT TITLE	IRRIGATION PROJECT IN THE INFLUENCE ZONE OF THE SERTÃO ALAGOANO IRRIGATION CANAL, ALAGOAS
DESCRIPTION	<p>The projects aim to expand irrigation services through the development of water infrastructure such as dams, canals, pumps, and pipelines. In the case of the hydro-agricultural project, it also includes water supply and energy generation, bringing economic and social development to the most needy regions of the Brazilian semi-arid.</p> <p>Partnerships with the private sector will enable the resumption of the implementation of these projects, which was interrupted due to budgetary constraints, as well as the incorporation of new technologies and increased productivity</p>
LINK PPI	In pre-qualification phase
QUALIFICATION TYPE	PPI
OPERATIONAL MODALITY	Federal Project
CAPEX	150.000.000,00
IMPACT	15,500 hectares to be implemented
CAPACITY	18,900 hectares irrigated
BENEFICIARIES	Municipalities of Piranhas, Olho D'Água do Casado, São José da Tapera, Carneiros, Senador Rui Palmeira, and Olho D'Água das Flores, Alagoas.
AUCTION CRITERIA	NA

PRIORITARY PROJECTS IN REGIONAL INTEGRATION AND DEVELOPMENT INITIATIVES

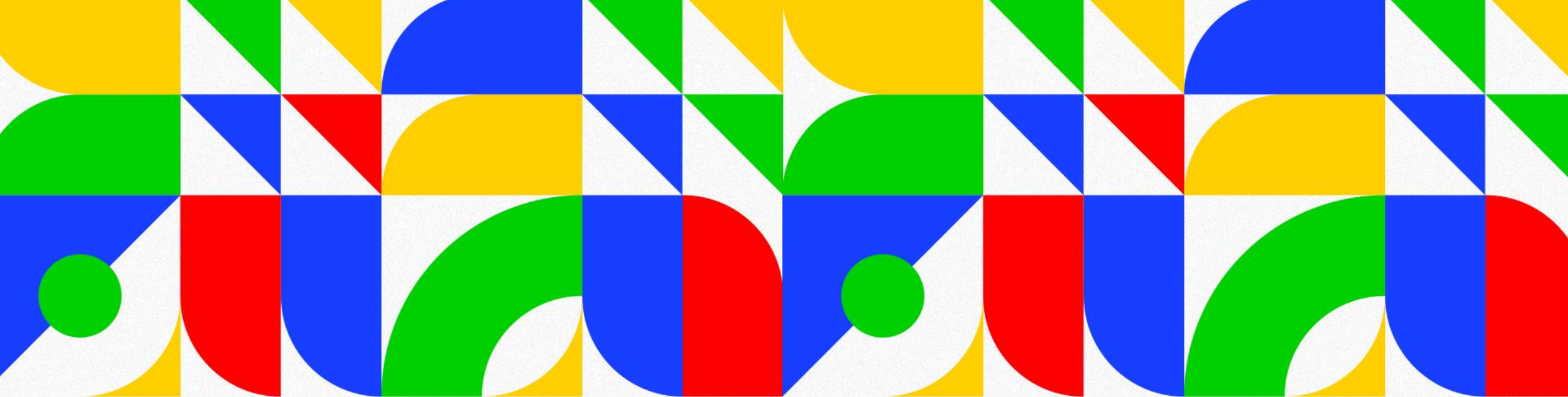


PROJECT TITLE	SALITRE STAGE 2 - BAHIA
DESCRIPTION	The Salitre Project is located in the sub-middle section of the São Francisco River basin, on its right bank, in the municipality of Juazeiro, state of Bahia. Stage 1 of the Salitre Project is implemented and in operation, with approximately 5,100 hectares of irrigable area and a flow rate of 6.81 m ³ /s.
LOCATION	Juazeiro, Bahia.
LINK PPI	In pre-qualification phase
AREA OF INTEREST	INFRASTRUCTURE
ESTIMATED VALUE	R\$ 380.000.000,00
QUALIFICATION TYPE	PPI
IMPACT	Benefited population: 200,000 inhabitants; Estimated jobs: 25,000 direct and indirect; Total estimated value: R\$ 380 million.

PRIORITARY PROJECTS IN REGIONAL INTEGRATION AND DEVELOPMENT INITIATIVES



PROJECT TITLE	CANAL DO SERTÃO BAIANO - BAHIA - BAIANO BACKLANDS CANAL - BAHIA
DESCRIPTION	Water conveyance and distribution system with raw water intake from the São Francisco River, Salitre Irrigation Project (PIS), to ensure water security for the Salitre, Tourão/Poções, Itapicuru, and Jacuípe river basins and the municipality of Uauá, located in the state of Bahia.
LOCATION	Bahia
DIGITAL VERSION LINK (IF AVAILABLE)	In pre-qualification phase
INTERESTED SECTOR	Infrastructure
ESTIMATED VALUE	R\$ 6,9 million
CONTRACTING METHOD	PPI
INVESTMENT NATURE	Private
DURATION	30 years
IMPACT	297 km of canal, divided into 5 sections. Municipalities served: 44 Beneficiary population: over 1 million people Estimated jobs: 45,000 direct and indirect



**CENTER-WEST DEVELOPMENT
SUPERINTENDENCY | SUDECO**

PRIORITARY PROJECTS IN REGIONAL INTEGRATION AND DEVELOPMENT INITIATIVES



PROJECT TITLE	MALHA OESTE - WEST NETWORK
DESCRIPTION	Re-licensing of the concession contract for Rumo West Network. Location: MS - SP
LINK PPI	N/A
QUALIFICATION DATE	02/12/2020
QUALIFICATION TYPE	PPI
OPERATIONAL MODALITY	Concession
CAPEX	R\$ 18.925.000.000,00
IMPACT	The West Network Railway is of utmost importance for the logistical development of the State. The railway covers over 1,300 km from east to west in the State, traversing the main regions of ore, cellulose, and cereal production. The revitalization will enable the expansion of the productive sector with more competitive logistics costs to reach the Port of Santos.
CAPACITY	Length of Conceded Section: 1,625.3 km (excluding the Ponta Porã branch).
BENEFICIARIES	Corumbá, Campo Grande, Ponta Porã, and Três Lagoas
AUCTION CRITERIA	Highest bid
CONCESSION DESCRIPTION	Unitary concession for own cargo: R\$ 0.2732/thousand TKU; Unitary concession for cargo in DP: R\$ 0.1288/thousand TKU

PRIORITARY PROJECTS IN REGIONAL INTEGRATION AND DEVELOPMENT INITIATIVES



PROJECT TITLE	BR-163/267/MS
DESCRIPTION	Re-licensing of the concession for BR-163/MS - Pantanal Route and Tuiuiu Route. Location: MS
LINK PPI	N/A
QUALIFICATION DATE	11/03/2021
QUALIFICATION TYPE	PPI - PRDCO 2024-2027 (3.2.P20 e 3.2.P21)
Investment Axis - PAC 2023	Efficient and Sustainable Transportation
OPERATIONAL MODALITY	Concession
CAPEX	R\$ 18.925.000.000,00
IMPACT	Improvement in population mobility and production flow
CAPACITY	Length: 1,142 km
BENEFICIARIES	
AUCTION CRITERIA	
CONCESSION DESCRIPTION	

PRIORITARY PROJECTS IN REGIONAL INTEGRATION AND DEVELOPMENT INITIATIVES



PROJECT TITLE	EF-354 - FERROVIA DE INTEGRAÇÃO CENTRO-OESTE (TRECHO MARA ROSA/GO ATÉ ÁGUA BOA/MT) EF-354 - CENTRAL-WEST INTEGRATION RAILWAY (FROM MARA ROSA/GO TO ÁGUA BOA/MT)
DESCRIPTION	Segment of the Central-West Integration Railway that begins at the North-South Railway in Mara Rosa/GO and goes to Água Boa/MT. Location: MT - GO
LINK PPI	N/A
QUALIFICATION DATE	20/06/2018
QUALIFICATION TYPE	PPI - PRDCO 2024-2027 (3.2.P7)
INVESTMENT AXIS - PAC 2023	Efficient and Sustainable Transportation
TYPE CLASSIFICATION	Federal Project
OPERATIONAL MODALITY	Concession
CAPEX	R\$ 2,730,000,000.00 Amount to be disbursed by Vale for the construction of the stretch from Mara Rosa/GO to Água Boa/MT
IMPACT	Promoting the transportation of grain production by rail to reduce transportation costs, increase negotiation capacity in the international market, and lower product prices for the end consumer
CAPACITY	383 km in length
BENEFICIARIES	States of Goiás, Mato Grosso, and Rondônia
ESTIMATED VALUE	R\$ 18,800,000,000.00
AUCTION CRITERIA	Largest concession

PRIORITARY PROJECTS IN REGIONAL INTEGRATION AND DEVELOPMENT INITIATIVES

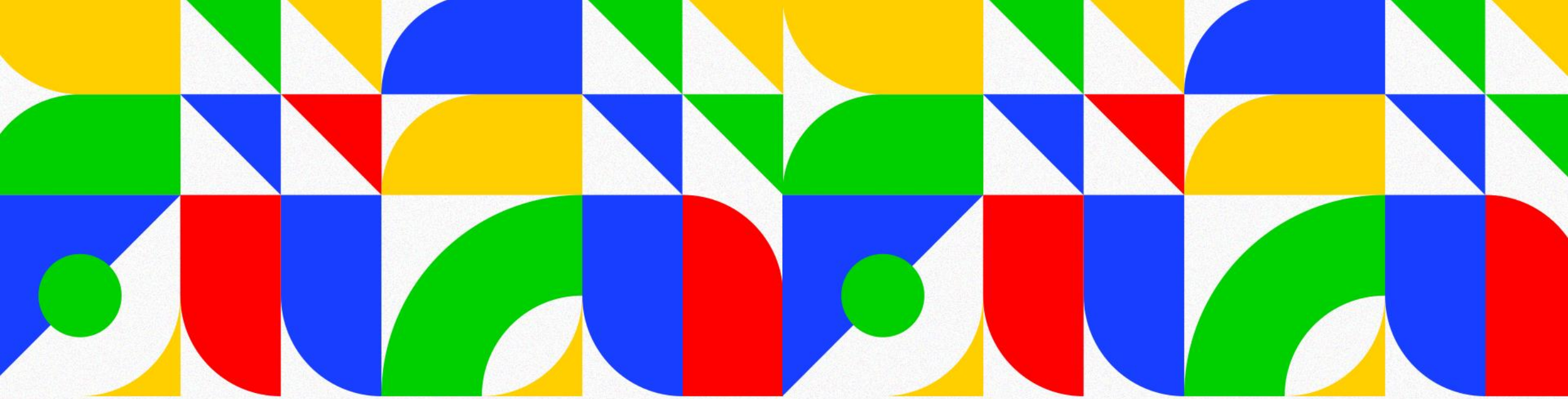


PROJECT TITLE	PROGRAMA DE EFICIÊNCIA ENERGÉTICA DO ESTADO STATE ENERGY EFFICIENCY PROGRAM
DESCRIPTION	Construction of 22 solar power plants with a comprehensive energy efficiency program. Location: Goiás
LINK PPI	N/A
QUALIFICATION DATE	
QUALIFICATION TYPE	PRDCO 2024-2027 (3.2.P1)
INVESTMENT AXIS - PAC 2023	Energy Transition and Security
OPERATIONAL MODALITY	
CAPEX	
IMPACT	
CAPACITY	
BENEFICIARIES	Population of the State of Goiás
ESTIMATED VALUE	R\$ 689.851.257,48

PRIORITARY PROJECTS IN REGIONAL INTEGRATION AND DEVELOPMENT INITIATIVES



PROJECT TITLE	DF - PAC - VLT AEROPORTO - PLANO PILOTO (W3 SUL E NORTE) DF - PAC - AIRPORT LIGHT RAIL - PLANO PILOTO (W3 SOUTH AND NORTH)
DESCRIPTION	Implementation of urban public transportation services through Light Rail Transit (LRT) - Airport to Plano Piloto (W3 South and North) connection. Location: Federal District
LINK PPI	N/A
QUALIFICATION DATE	-
QUALIFICATION TYPE	PRDCO 2024-2027 (3.1.P6)
Investment Axis - PAC 2023	Efficient and Sustainable Transportation
OPERATIONAL MODALITY	
CAPEX	
IMPACT	
CAPACITY	
BENEFICIARIES	1.8 million people
ESTIMATED VALUE	R\$ 3.200.000.000,00



**NORTHEAST DEVELOPMENT
SUPERINTENDENCY - SUDENE**

PRIORITARY PROJECTS IN REGIONAL INTEGRATION AND DEVELOPMENT INITIATIVES

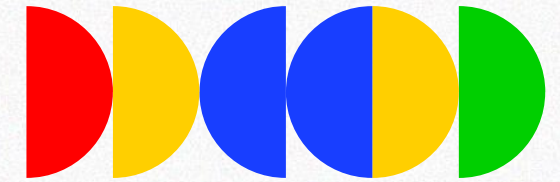
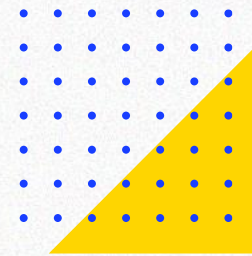


PROJECT TITLE	IMPACTA SEMIÁRIDO - AÇÕES VOLTADAS PARA A ESTÍMULO À BIOECONOMIA REGIONAL - IMPACTA SEMIÁRIDO - ACTIONS AIMED AT STIMULATING REGIONAL BIOECONOMY
DESCRIPTION	The Impacta Semiárido Network, with the strategic purpose of territorial development through socio-economic, environmental, and sustainable actions in the semi-arid region of Northeast Brazil. On one hand, the structuring of Local Productive Arrangements (LPAs) in the Bioeconomy, building technologies in partnership with national and international private entities, associated with the National Institute of Positive Science and Technology of the Health Industry 4.0, supported by CNPq/MCTI, focusing on the development of Health 4.0 solutions, namely: Green Active Pharmaceutical Ingredients (Green APIs), smart cosmetics, functional foods, and green agricultural defenses.
LOCATION	-
DIGITAL VERSION LINK (IF AVAILABLE)	N/A
INTERESTED SECTOR	Infrastructure
ESTIMATED VALUE	R\$ 200 million (network of biorefineries or biofactories in the States within Sudene's Area of Operation)
CONTRACTING METHOD	
INVESTMENT NATURE	
DURATION	10 years
IMPACT	Beneficiary population: 100,000

PRIORITARY PROJECTS IN REGIONAL INTEGRATION AND DEVELOPMENT INITIATIVES



PROJECT TITLE	IMPACTA SEMIÁRIDO - AÇÕES VOLTADAS PARA A ESTÍMULO À BIOECONOMIA REGIONAL - IMPACTA SEMIÁRIDO - ACTIONS AIMED AT STIMULATING REGIONAL BIOECONOMY
DESCRIPTION	The Impacta Semiárido Network, with the strategic purpose of territorial development through socio-economic, environmental, and sustainable actions in the semi-arid region of Northeast Brazil. On one hand, the structuring of Local Productive Arrangements (LPAs) in the Bioeconomy, building technologies in partnership with national and international private entities, associated with the National Institute of Positive Science and Technology of the Health Industry 4.0, supported by CNPq/MCTI, focusing on the development of Health 4.0 solutions, namely: Green Active Pharmaceutical Ingredients (Green APIs), smart cosmetics, functional foods, and green agricultural defenses.
LOCATION	-
DIGITAL VERSION LINK (IF AVAILABLE)	N/A
INTERESTED SECTOR	Infrastructure
ESTIMATED VALUE	R\$ 200 million (network of biorefineries or biofactories in the States within Sudene's Area of Operation)
CONTRACTING METHOD	
INVESTMENT NATURE	
DURATION	10 years
IMPACT	Beneficiary population: 100,000



Thank you!

FOR MORE INFORMATIONS



Internacional@mdr.gov.br

MINISTÉRIO DA
INTEGRAÇÃO E DO
DESENVOLVIMENTO
REGIONAL

