
RISKS ARE SYSTEMIC

CRISES ARE CASCADING



SINCE RISKS ARE NOT UNDERSTOOD, CRISES ARE INEVITABLE

DO WE UNDERSTAND THAT DISASTERS ARE

Sangão, Brazil
3:25 PM



BRAZIL DISASTER
MORE THAN 100 KILLED, 160,000+ DISPLACED BY V
Civil Defense: storms have affected some 1,476,000 people

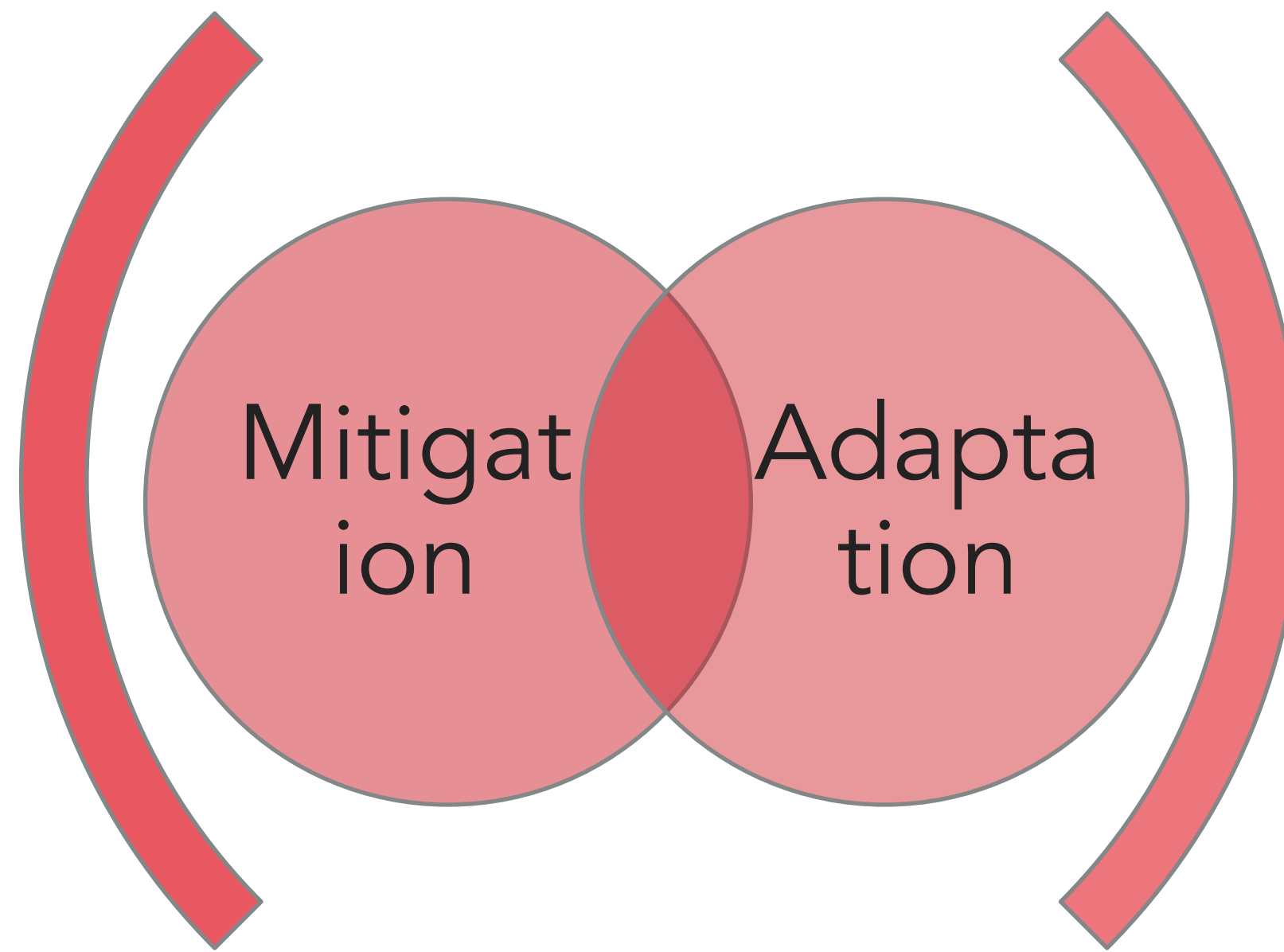


SINCE RISKS ARE NOT UNDERSTOOD, CRISES ARE INEVITABLE

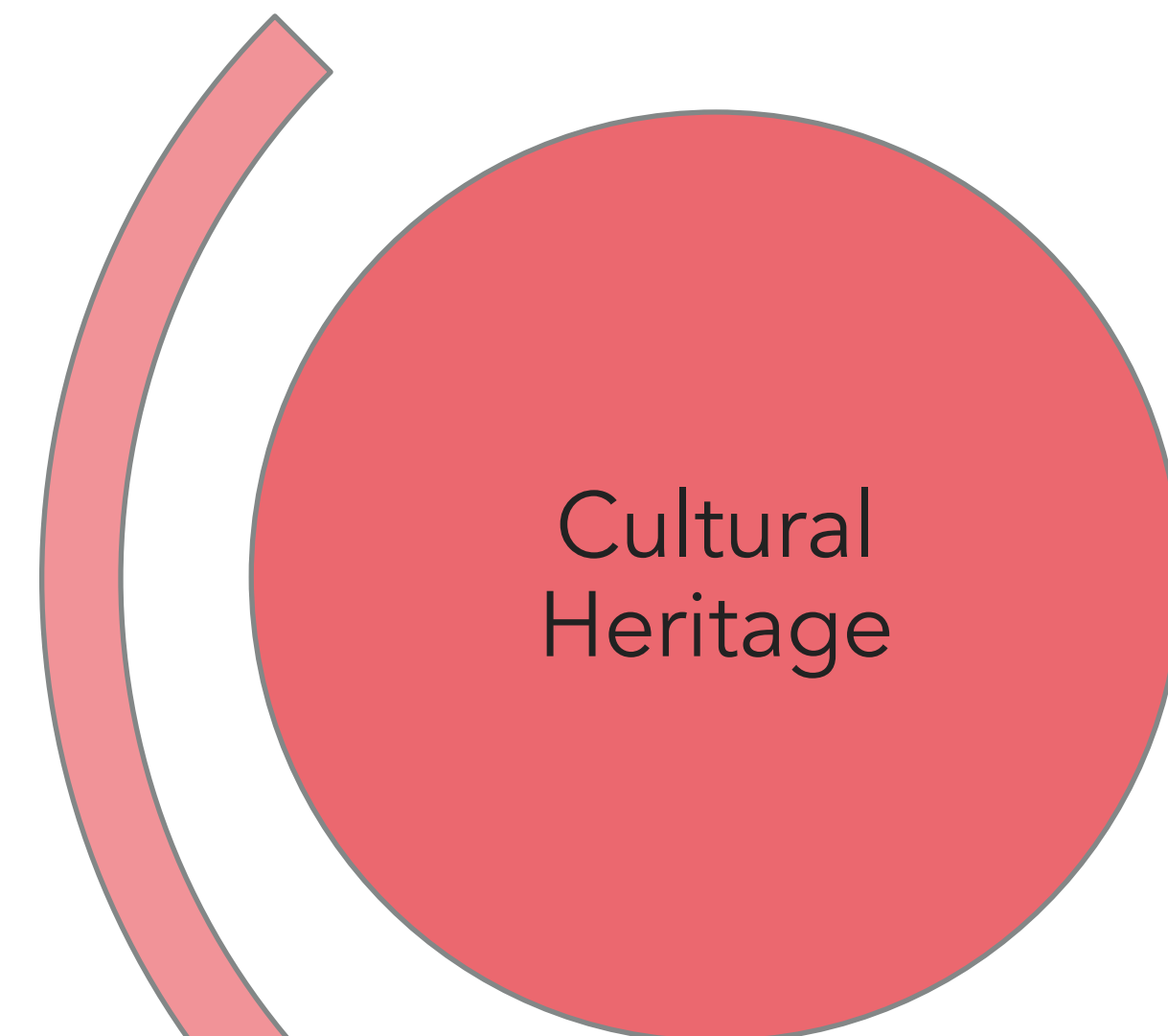
HOW LONG HAVE WE MAINTAINED A SILOED APPROACH?



Disaster Risk Management



Climate Change



Specific Sector



SINCE RISKS ARE NOT UNDERSTOOD, CRISES ARE INEVITABLE

DO WE CONTINUE TO BLAME 'NATURE' FOR THE DISASTERS?



G20
BRASIL 2024
CONSTRUINDO UM MUNDO JUSTO
E UM PLANETA SUSTENTÁVEL

Cyclone Amphan, 2020

SINCE RISKS ARE NOT UNDERSTOOD, CRISES ARE INEVITABLE

DO WE CONTINUE TO BLAME CLIMATE CHANGE FOR EVERYTHING?



Pakistan Floods, 2022



Karachi Heatwave, 2015



THERE IS AN URGENT NEED TO PUNCTURE THE SILOS!



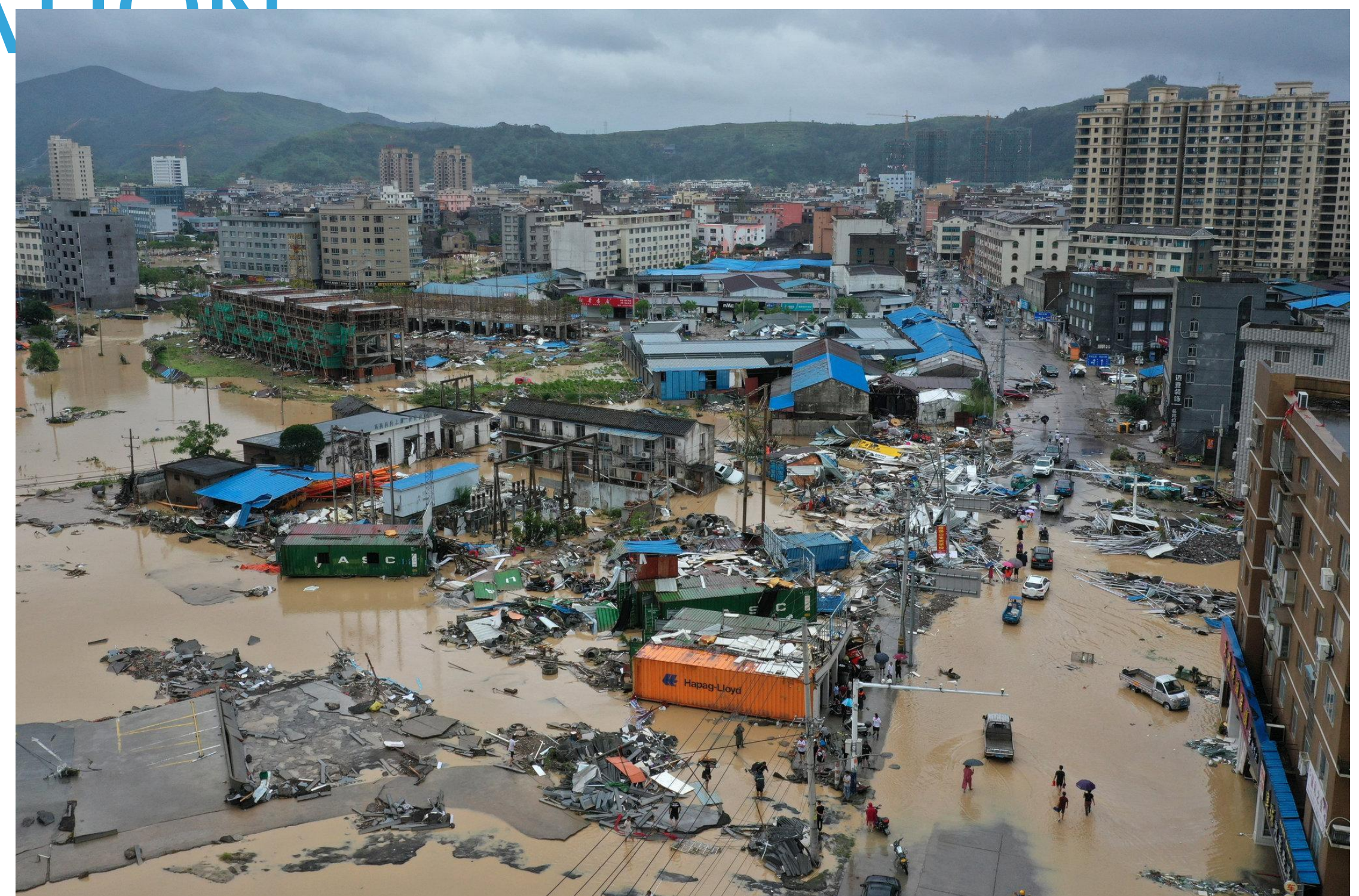
Requires a bit of technicality, understanding of data interpretation and visualization, but it is not impossible!

Climate change is not a distant phenomenon!



UNDERSTAND DISASTER RISK!

THERE IS AN URGENT NEED TO UNDERSTAND THE PROCESS OF RISK CREATION



What we usually witness are the consequences, and hence we often confuse floods as disasters!

THERE IS AN URGENT NEED TO UNDERSTAND THE PROCESS OF RISK CREATION

The **presence** of people, livelihoods, species or ecosystems, environmental functions, services, and resources, infrastructure, or economic, social, or cultural assets in places and settings that **could be subject to potential losses**.

Hazard

A process, phenomenon or human activity that **may cause** loss of life, injury, damage and loss to property, infrastructure, livelihoods etc.

Exposure

Vulnerability

Physical

- Location
- Structure
- Physiology

Environmental

- Change in land use patterns

Social

- Demography
- Culture
- Individualism v/s collectivism

Political (Governance)

- No willingness to act
- No leadership

Economical

- Limited financial resources
- No EWS



THERE IS AN URGENT NEED TO UNDERSTAND THE PROCESS OF RISK CREATION

Exposure of areas, people, livelihoods, economies and their vulnerabilities are not created in an instant, it takes years and decades – through our decisions, through our actions!

Hazard

- Can be slow-onset, rapid onset
- If considering climate risks, focus on hydro-meteorological hazards

Exposure

Vulnerability

Physical

- Location
- Structure
- Physiology

Environmental

- Change in land use patterns

Social

- Demography
- Culture
- Individualism v/s collectivism

Political (Governance)

- No willingness to act
- No leadership

Economical

- Limited financial resources
- No EWS



THERE IS AN URGENT NEED TO EXPLORE THE TIPPING POINTS

Hazards

Fragile system

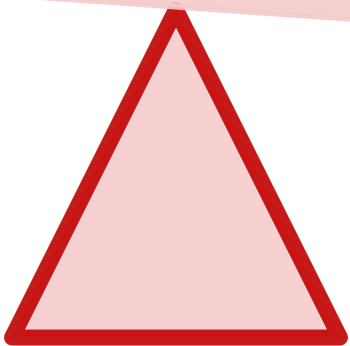
Community, a province, a nation, an organisation

Triggers

Lack of coping capacity

Exposure

Vulnerabilities



Tipping Point



REFLECTIONS



Risk is systemic and complex; stop underestimating and over-simplifying it

- Try and understand the process of risk creation

Disasters are consequences of processes when triggered beyond the tipping point

- Hazards are not disasters
- Disasters are not natural

Develop a comprehensive approach - look at climate change, disaster risk together and then plan

While risk management is important for cultural heritage, root for culture based solutions



REPAUL KANJI, PH.D.

repaul23@gmail.com; grridcorps@gmail.com; +91-8791649283

