

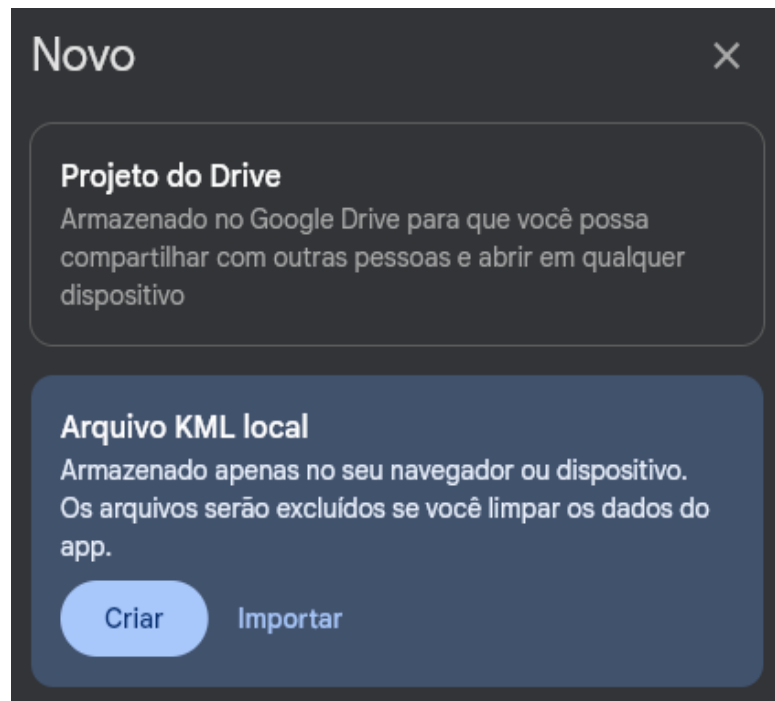
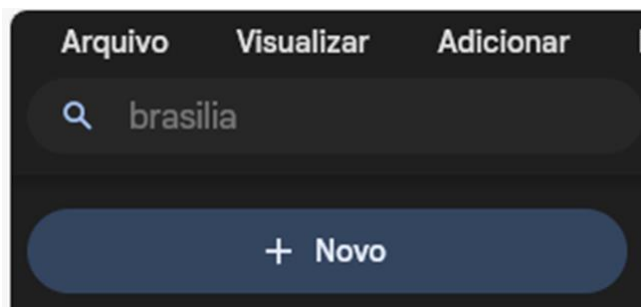


# PASSO A PASSO

## Poligonal do núcleo urbano informal

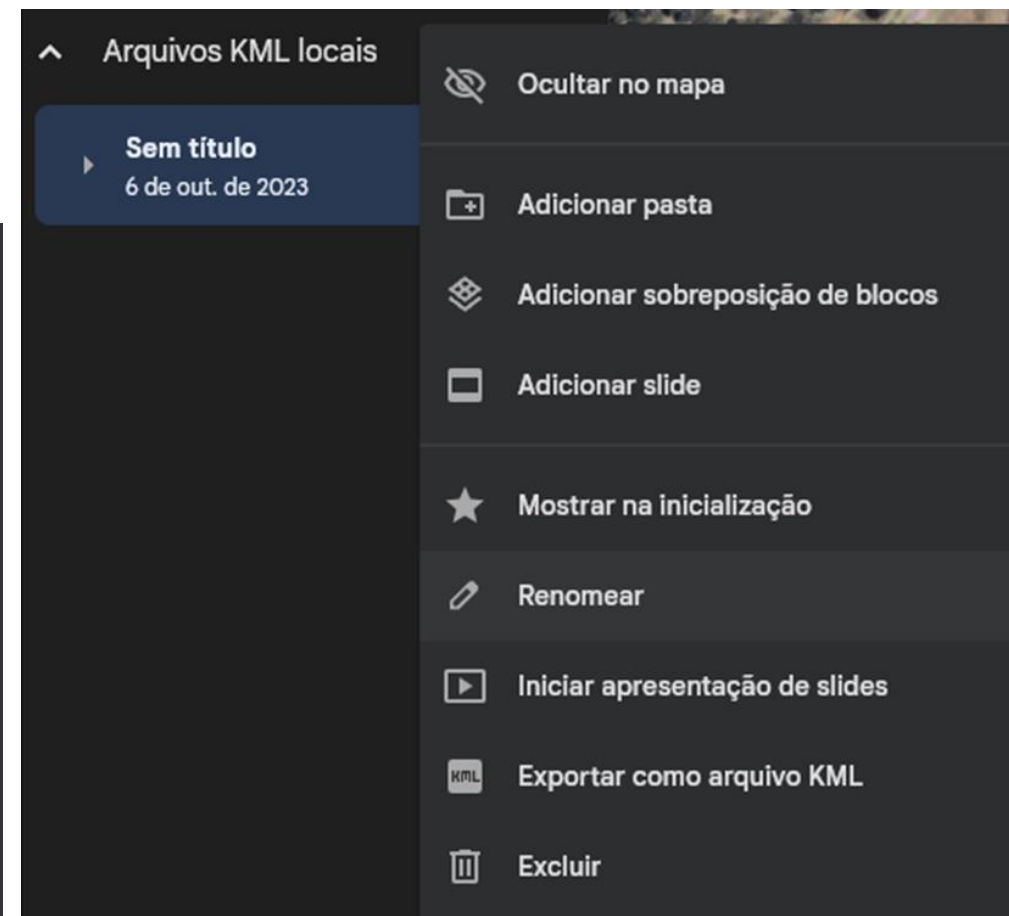
1- Acesse o aplicativo on-line **Google Earth** – na internet

2 -Clique no botão novo para criar um projeto KML



3- Clique em criar, salve seu projeto

4- Em renomear você poderá informar o nome do território periférico.

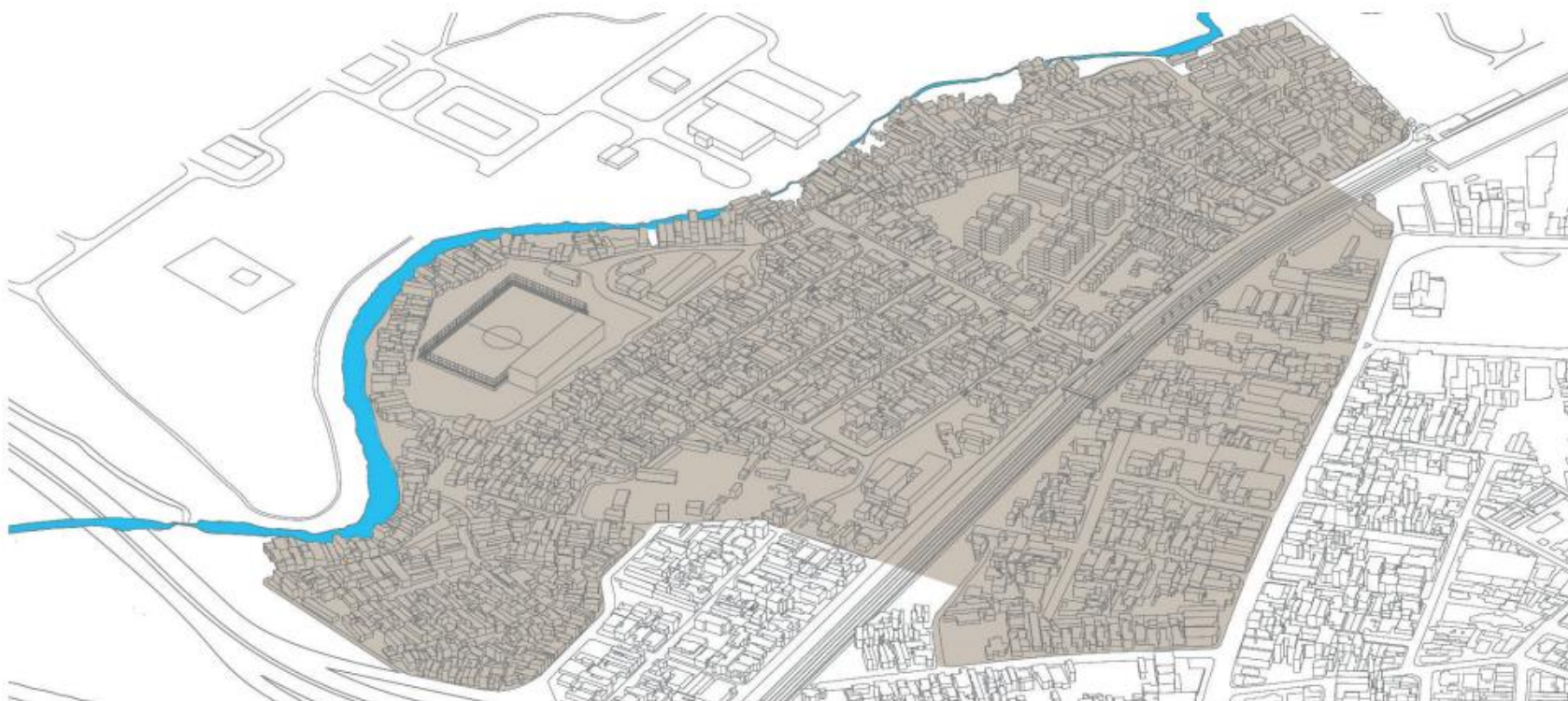




# PASSO A PASSO

## Poligonal do núcleo urbano informal

O próximo passo será desenhar o núcleo urbano informal

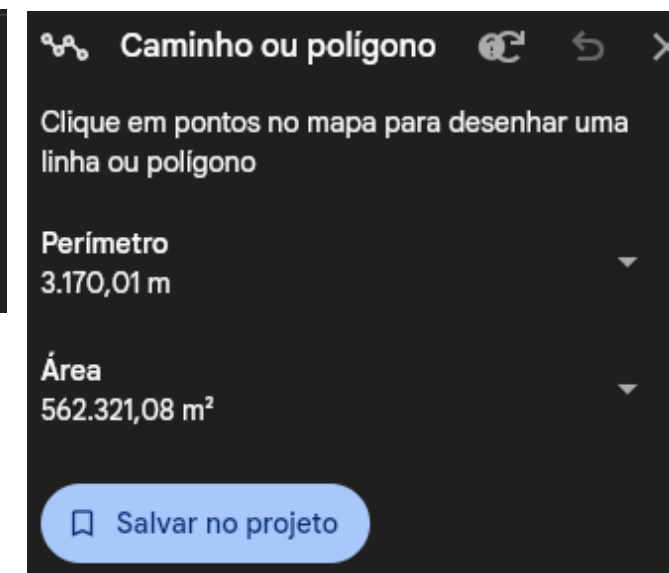
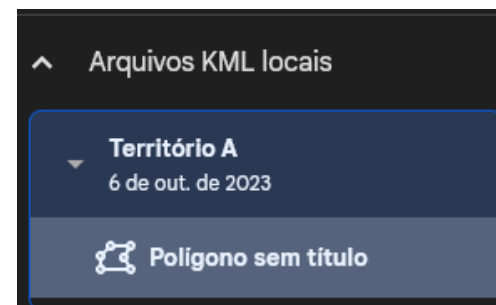
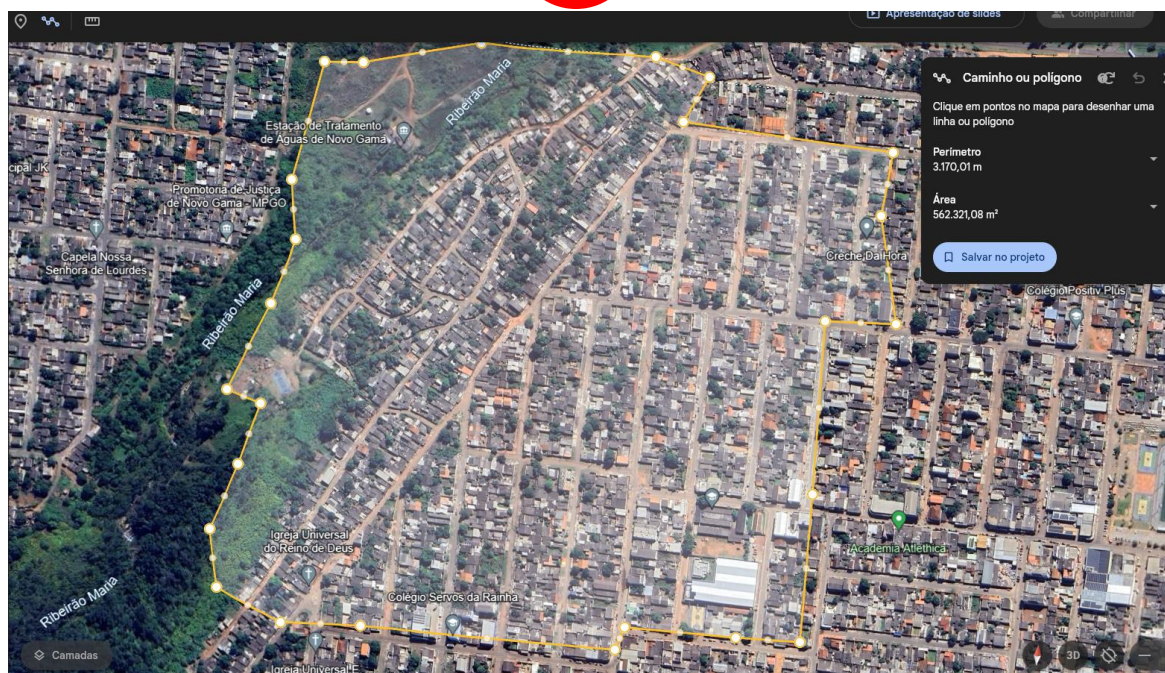
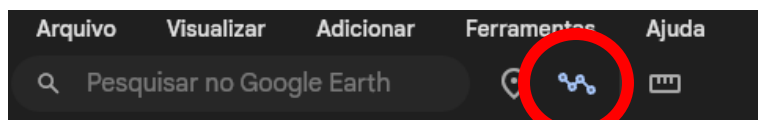




# PASSO A PASSO

## Poligonal do núcleo urbano informal

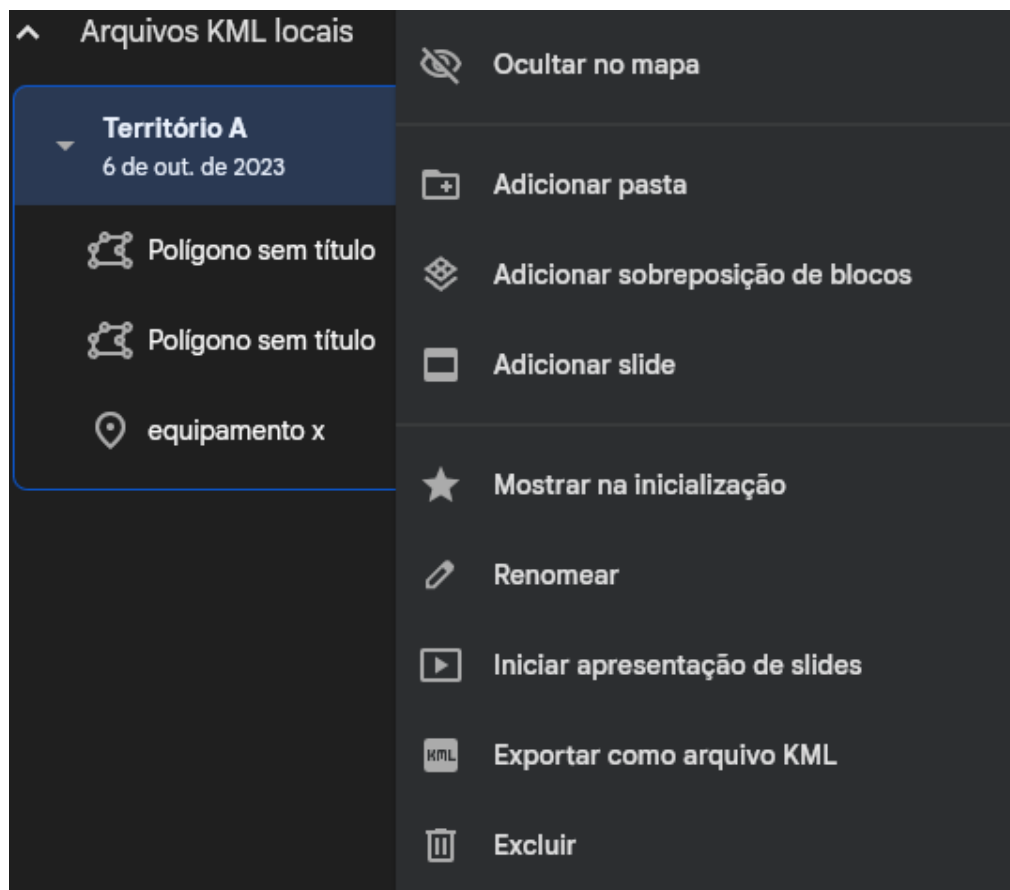
Clique na ferramenta – caminho ou polígono e trace as linhas que delimitam o núcleo urbano informal e salve o polígono no seu projeto





# PASSO A PASSO

## Poligonal do núcleo urbano informal



Clique na opção "exportar como arquivo KML" e anexe o arquivo ao formulário da seleção no Transferegov