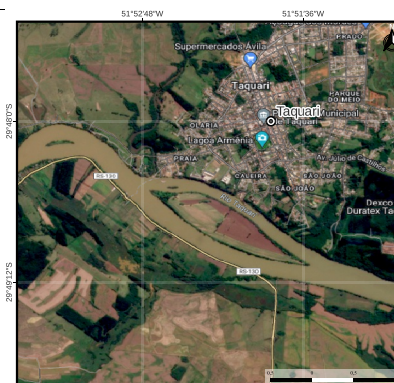


Post flood event on the Taquari River, city of Taquari - RS - Brazil (Date: May 07, 2024)

51°54'0"W

51°52'12"W

51°50'24"W



SUBTITLE

- ⊙ City
- Hydrography

Information based on remote sensing data, without field validation

Geographic Coordinate System
 Lat/Long

Geodetic Reference System
 WGS-84 (EPSG 4326)

Map Date: 2024/05/13

Post-disaster: Airbus DS GEO, 2024/05/07
 Includes Pleiades material © CNES (2024), Distribution Airbus DS.
 Labels: © (2024) Google labels

