

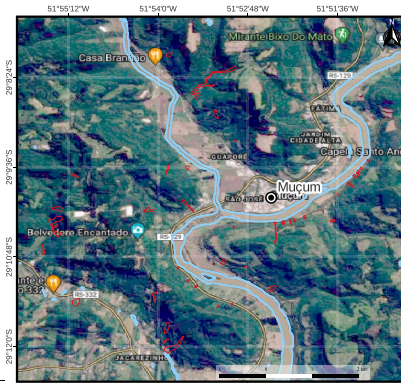
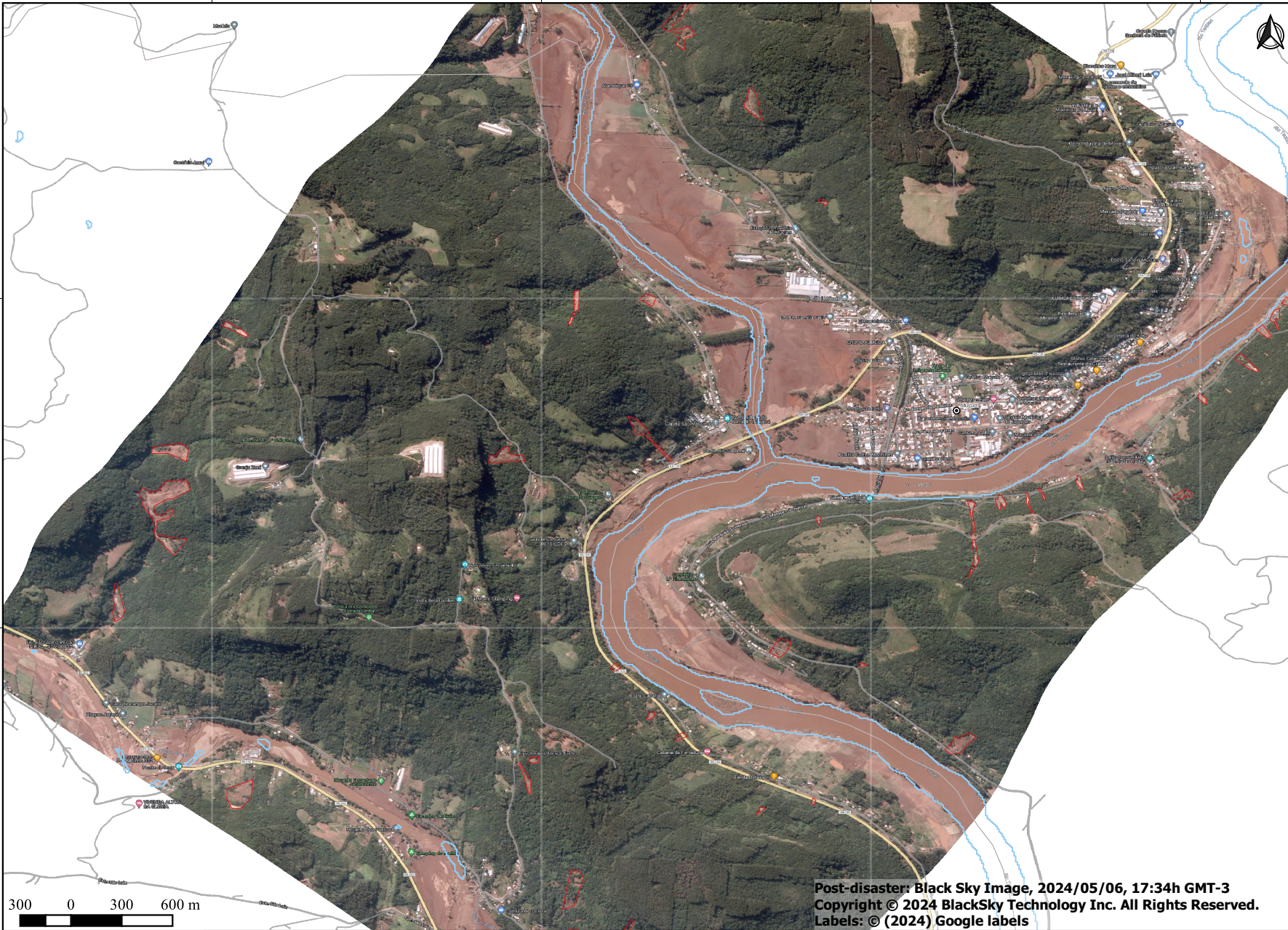
Landslide event in the municipality of Muçum and Encantado - RS - Brazil

51°55'12"W

51°54'0"W

51°52'48"W

51°51'36"W



SUBTITLE

- City
- Hydrography
- Possible landslide

Information based on remote sensing data, without field validation

Geographic Coordinate System
 Lat/Long
 Geodetic Reference System
 WGS-84 (EPSG 4326)
 Map Date: 2024/05/09

Post-disaster: Black Sky Image, 2024/05/06, 17:34h GMT-3
 Copyright © 2024 BlackSky Technology Inc. All Rights Reserved.
 Labels: © (2024) Google labels

