

Jacuí River Flood Event in Dona Francisca - RS - Brazil

53°21'36"W

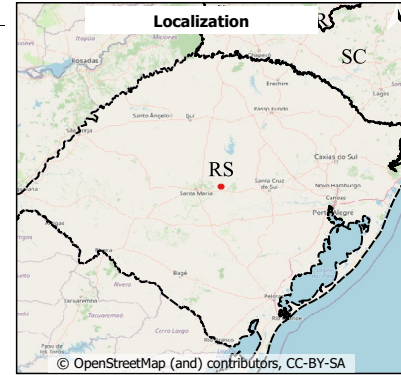
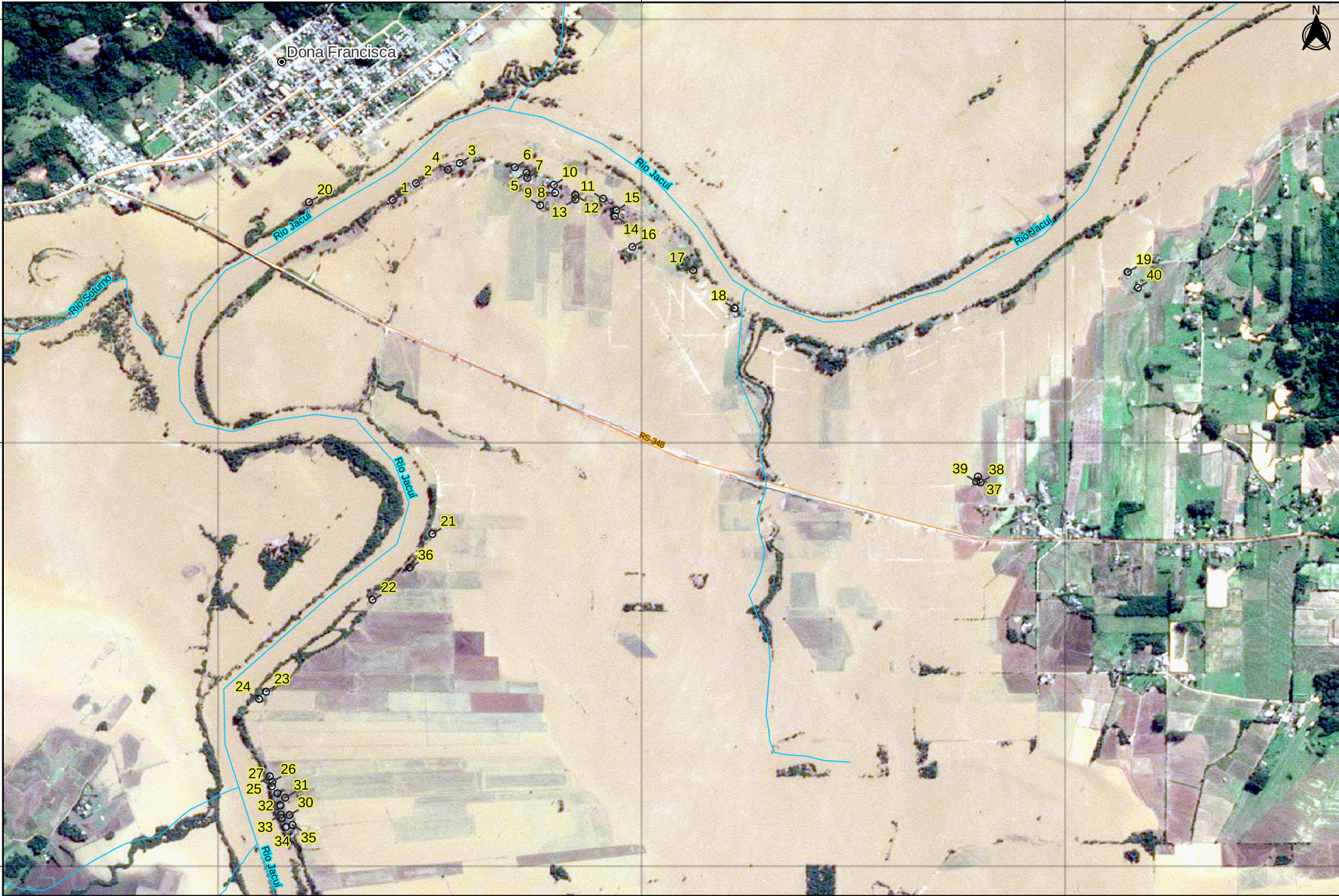
53°20'24"W

53°19'12"W

29°37'12"S

29°38'24"S

29°39'36"S



BUILDINGS

fid	latitude	longitude
1	29° 37' 42.70" S	53° 21' 6.325" W
2	29° 37' 39.83" S	53° 21' 2.359" W
3	29° 37' 36.42" S	53° 20' 54.91" W
4	29° 37' 37.52" S	53° 20' 56.92" W
5	29° 37' 38.06" S	53° 20' 43.56" W
6	29° 37' 37.12" S	53° 20' 45.55" W
7	29° 37' 38.92" S	53° 20' 43.41" W
8	29° 37' 41.45" S	53° 20' 38.68" W
9	29° 37' 43.59" S	53° 20' 41.25" W
10	29° 37' 40.11" S	53° 20' 38.90" W
11	29° 37' 42.46" S	53° 20' 30.54" W
12	29° 37' 41.83" S	53° 20' 35.27" W
13	29° 37' 42.61" S	53° 20' 35.25" W
14	29° 37' 45.46" S	53° 20' 28.52" W
15	29° 37' 44.44" S	53° 20' 28.30" W
16	29° 37' 50.66" S	53° 20' 25.55" W
17	29° 37' 54.60" S	53° 20' 15.21" W
18	29° 38' 1.100" S	53° 20' 8.167" W
19	29° 37' 54.93" S	53° 19' 1.300" W
20	29° 37' 43.04" S	53° 21' 20.55" W
21	29° 38' 39.47" S	53° 20' 59.56" W
22	29° 38' 50.67" S	53° 21' 9.757" W
23	29° 39' 6.290" S	53° 21' 27.86" W
24	29° 39' 7.556" S	53° 21' 29.05" W
25	29° 39' 20.68" S	53° 21' 27.22" W
26	29° 39' 21.60" S	53° 21' 26.77" W
27	29° 39' 22.38" S	53° 21' 26.87" W
28	29° 39' 23.57" S	53° 21' 25.94" W
29	29° 39' 25.66" S	53° 21' 25.40" W
30	29° 39' 27.26" S	53° 21' 23.88" W
31	29° 39' 24.33" S	53° 21' 24.61" W
32	29° 39' 27.81" S	53° 21' 25.19" W
33	29° 39' 27.17" S	53° 21' 25.31" W
34	29° 39' 29.30" S	53° 21' 24.47" W
35	29° 39' 28.96" S	53° 21' 23.36" W
36	29° 38' 45.17" S	53° 21' 3.457" W
37	29° 38' 29.74" S	53° 19' 26.77" W
38	29° 38' 30.70" S	53° 19' 26.32" W
39	29° 38' 30.55" S	53° 19' 27.09" W
40	29° 37' 57.60" S	53° 18' 59.56" W

Planet Scope Scene Image, 2024/05/06, 13:48h GMT-3
 Rede MAIS/MJSP, includes material © (2024) Planet Labs Inc. All rights reserved.



SUBTITLE

- City
- Flooded buildings
- Hydrography
- Road section

Geographic Coordinate System Lat/Long

Geodetic Reference System SIRGAS 2000

SCALE

1:20.000

300 0 300 600 m

