



Technical Data Packages of Bidding Rounds for Exploration and Production of Oil and Gas in Brazil

Paulo de Tarso Antunes
Data Availability Coordinator



Contents

- BDEP
- Technical data packages
- eBID app
- Bidding of the Open Acreage
- Example of a sector's data package
- GeoANP app and final considerations

Exploration and Production Datacenter (BDEP)

ONE OF THE LARGEST E&P DATABASES IN THE WORLD

Stores seismic data, non-seismic data, digital data from wells, metadata, in addition to managing the entire physical collection of rocks in Brazil.

Receive, analyze, store and make available all technical data.

It has about **6 petabytes** of data in its collection.

It has 35 member companies.

Is responsible for providing public data for companies participating in bid rounds.

Is going through digital transformations in the last 2 years.



Join BDEP

Current Members



Technical Data Packages (1/2)

The technical data packages are prepared specifically with public data from the blocks that participate in ANP bid rounds and available to companies that follow the terms of the public notice. Will obey, partially or totally, the following structure:

- Geological Summary;
- Joint opinion of the competent environmental agency and the ANP on the environmental sensitivity of the areas offered;
- Public seismic data - 2D and 3D seismic surveys, pos-stack, standard SEG-Y format;
- Public well data - composite logs, log curves, geochemical data;

Technical Data Packages (2/2)

- Well folders containing geological data and information (description of drill cuttings samples, core analysis, sedimentology and geochemistry), drilling (fluids, coating and cementation) and production (completion, testing, profiling and analysis of fluid samples) and other pertinent information;
- Gravimetry and magnetometry data (x,y,z), ASCII format;
- Production data;
- Geology and Geophysics studies contracted by ANP;
- Other reports, studies, relevant public documents selected by the ANP.

ebid.anp.gov.br

(All available data packages can be consulted on eBID)

Currently, are available the Open Acreage and the 17th Exploratory Block Bidding Round.



Technical Data Superintendency - SDT
Exploration and Production Database - BDEP

Pasteur Avenue, 404 - Block A4 - Urca
Rio de Janeiro - Brazil - Zip Code: 22290-240
Help Desk: +55 (21) 3545-0175 / +55 (21) 3545-0115
Secretary: +55 (21) 3545-0102
E-mail: helpdesk@anp.gov.br

eBID content's is organized within the sectors offered and It's products, showing samples of seismics, non-seismics, details of the data available on the wells.

Bidding of the Open Acreage

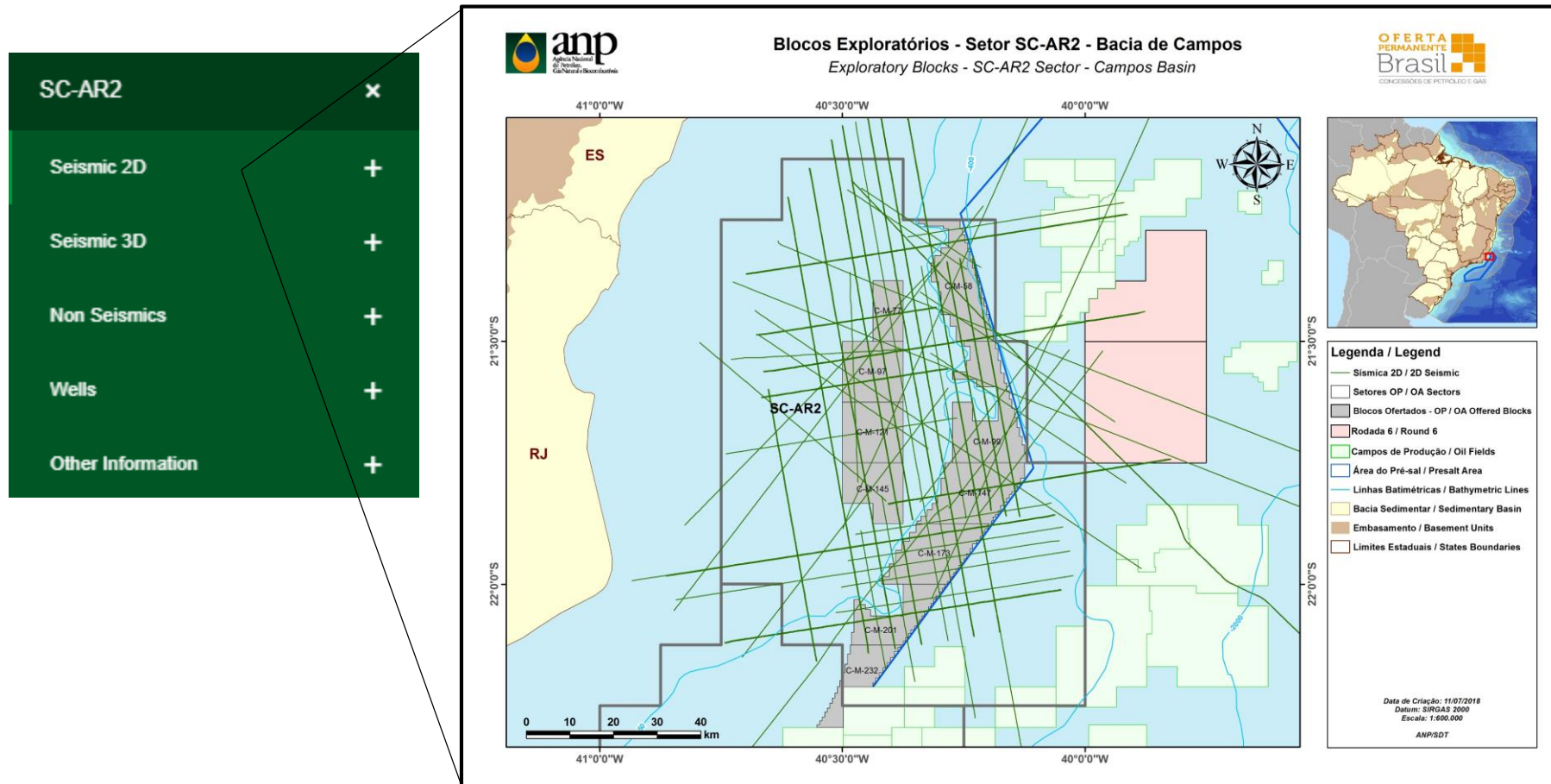



O P E N
A C R E A G E
Brazil
OIL AND GAS CONCESSIONS

- Continuous offer of blocks and mature fields.
- Applications can be submitted anytime and not just at designated points.

Example of a sector's data package (1/4)

SC-AR2 data package (Campos Basin) – 2D Seismic

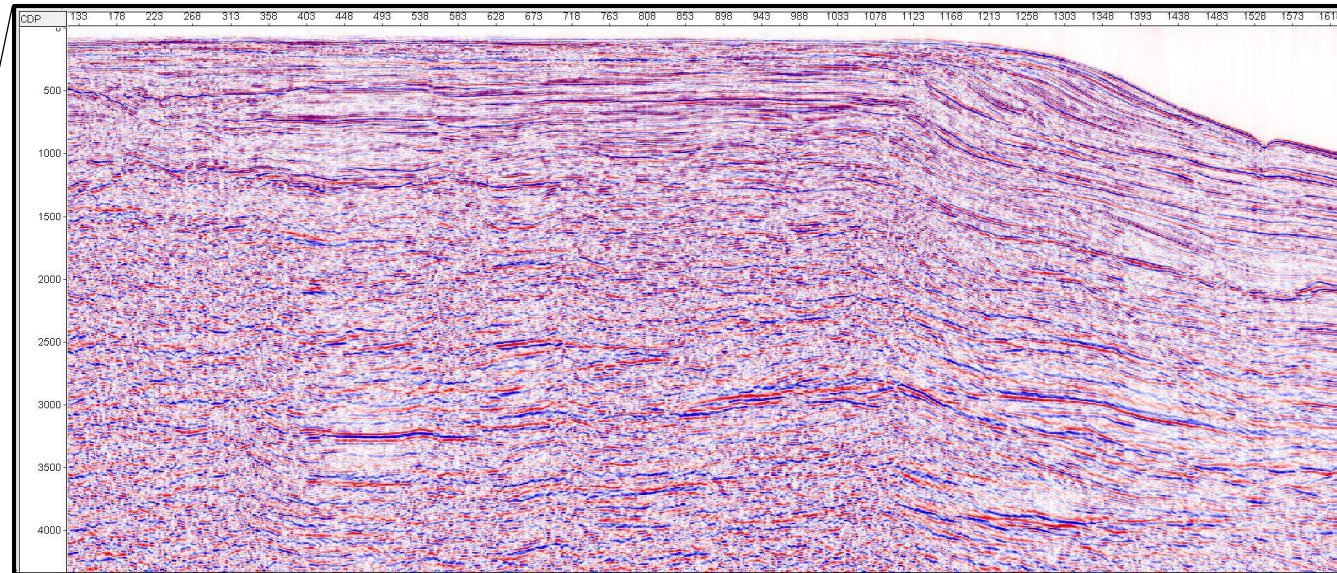


2D seismic coverage of the Sector SC-AR2 and It's blocks, available on eBID website.

Example of a sector's data package (2/4)

SC-AR2 data package (Campos Basin) – R0003_GRAND_CAMPOS.0214-0059

SC-AR2	×
Seismic 2D	×
0046_CAMPOS_11A	
0048_CAMPOS_13A	
0214_CAMPOS_RADIAL_1A	
0228_BAIKO_SAO_TOME_9A	
0231_BAIKO_SAO_TOME_3A	
0258_2D_SPEC_BM_C	
0259_2D_SPP_2Q_1999_PSTM_2001	
0259_2D_SPP_2Q_1999_PSTM_2003	
R0003_GRAND_CAMPOS	

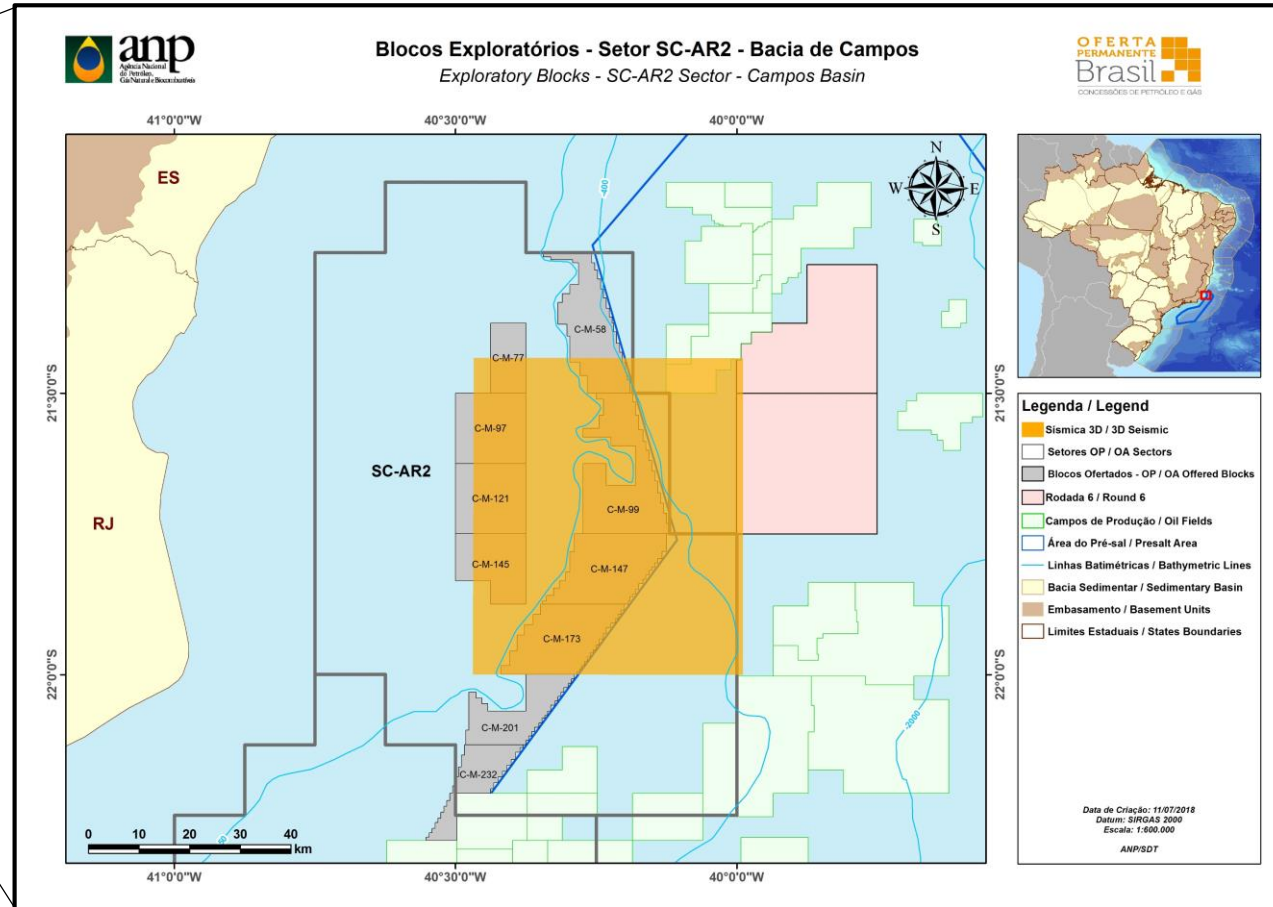


2D seismic line sample available at the eBID website.

Example of a sector's data package (3/4)

SC-AR2 data package (Campos Basin) – 3D Seismic

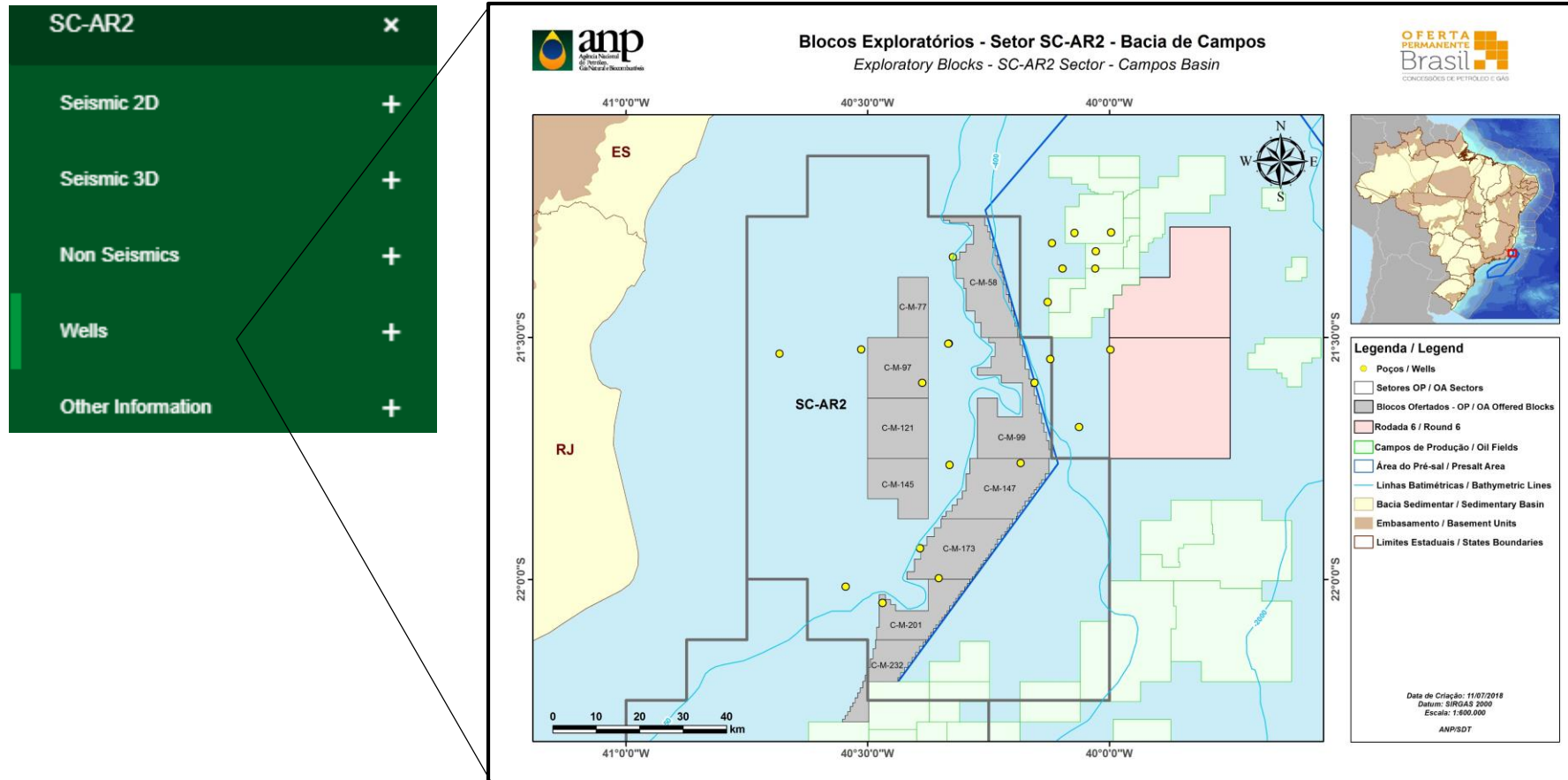
SC-AR2	×
Seismic 2D	+
Seismic 3D	+
Non Seismics	+
Wells	+
Other Information	+



3D seismic coverage of the Sector SC-AR2 and It's blocks, available on eBID website.

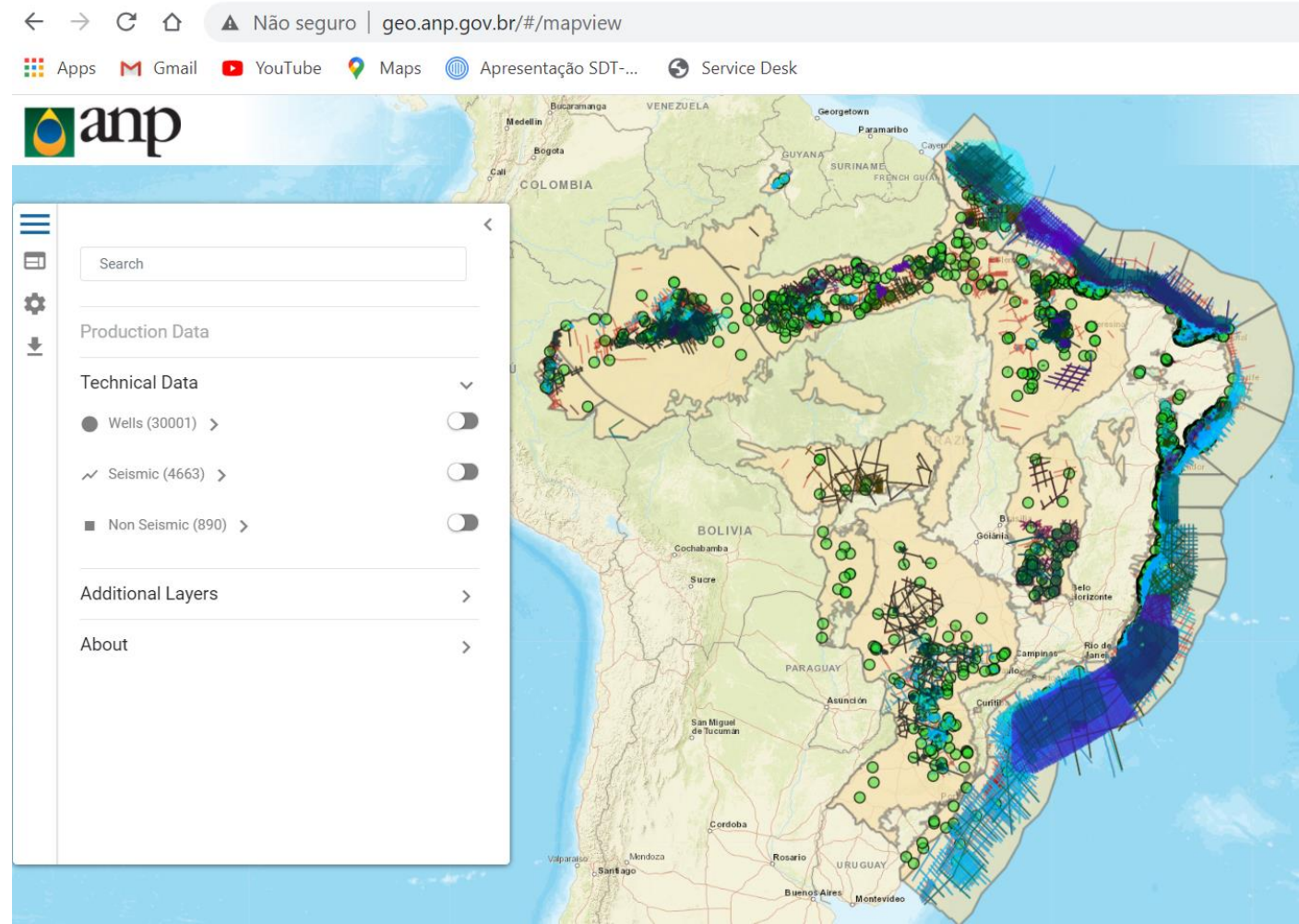
Example of a sector's data package (4/4)

SC-AR2 data package (Campos Basin) – Wells



Wells coverage of the Sector SC-AR2 and It's blocks, available on eBID website.

GeoANP is an interactive tool that gathers information from the exploration and production segment. Allows to consult data available in the BDEP collection.



Thank you !!!



www.anp.gov.br

Av. Rio Branco, 65, 12º - 22º andar - Rio de Janeiro - Brasil
Fone: +55 (21) 2112-8100

More information: helpdesk@anp.gov.br

Paulo de Tarso Antunes

ptarso@anp.gov.br