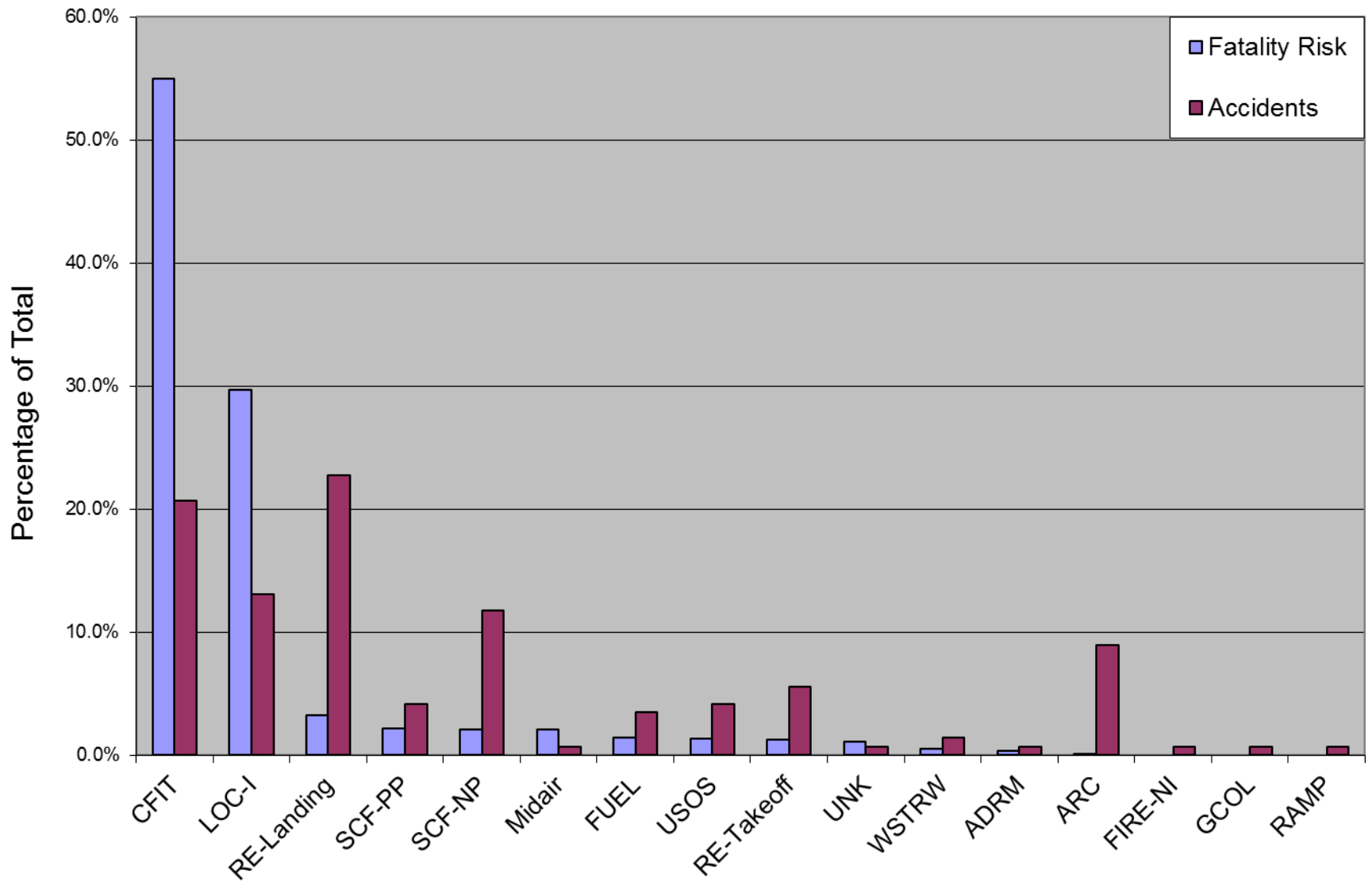
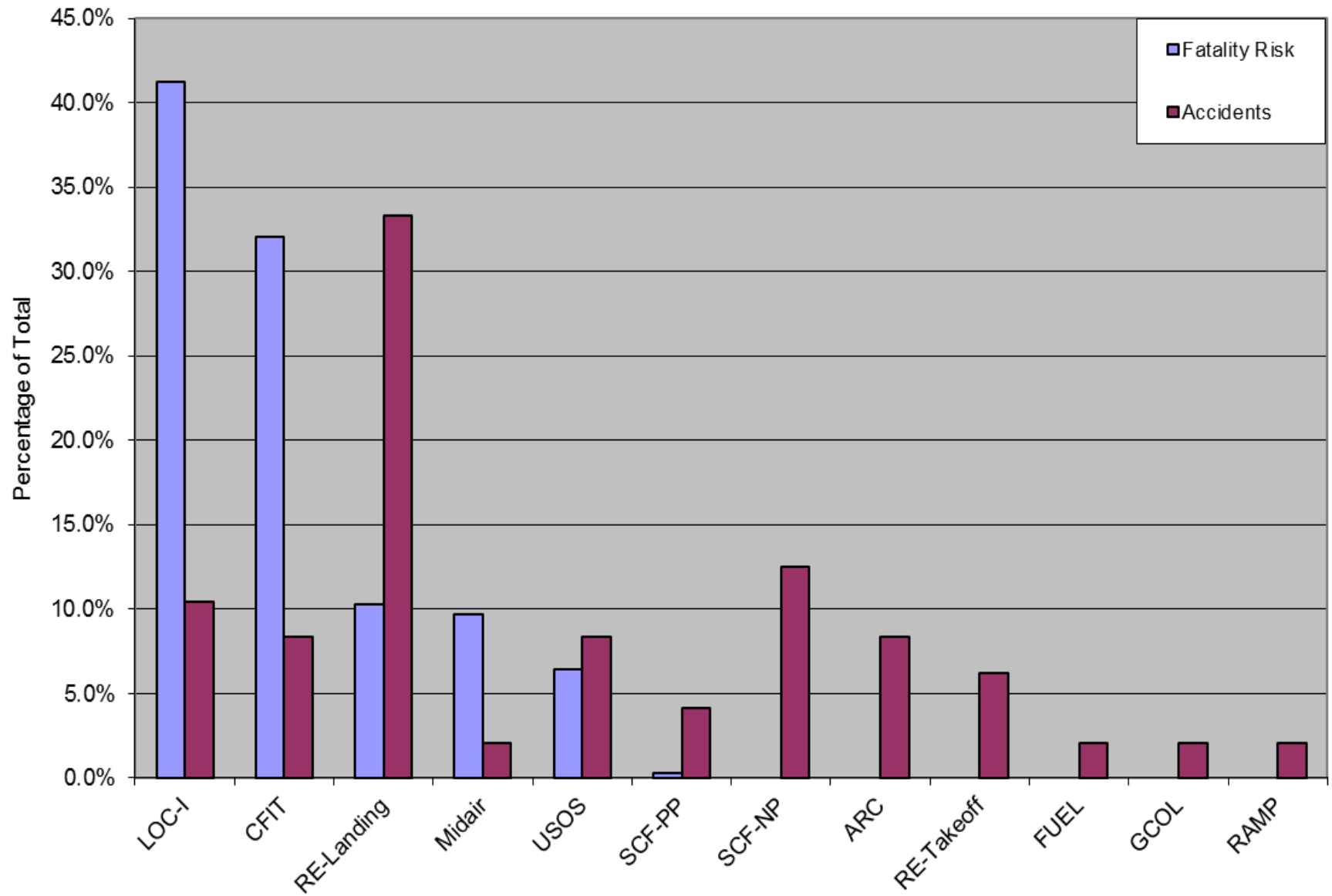


1987-2014 Latin America & Caribbean Hull Loss and /or Fatal Accidents



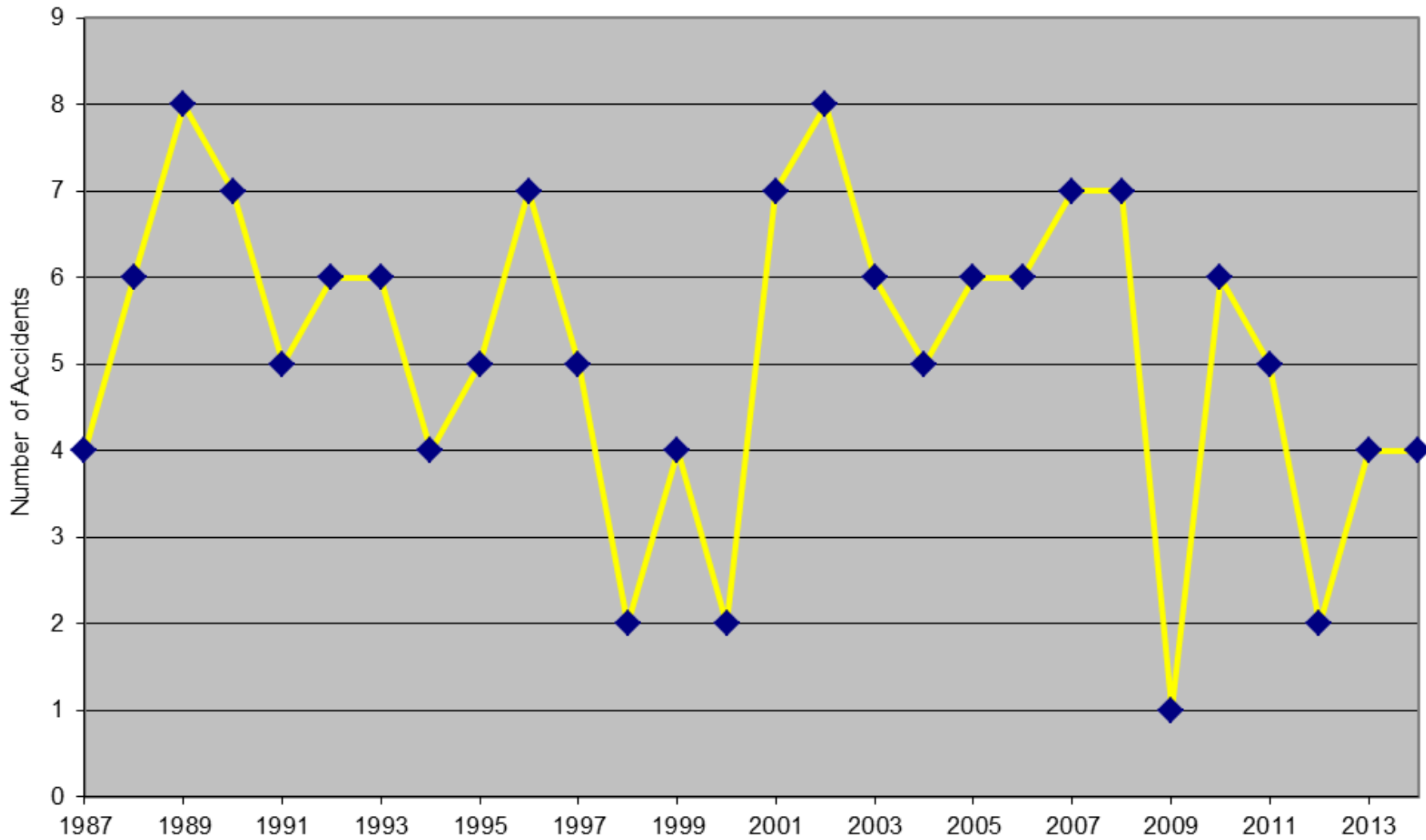
*Western built airplanes, Part 121 equivalent operations; 145 Accidents; 48.9 Full Loss Equivalents

2005-2014 Latin America & Caribbean Hull Loss and Fatal Accidents



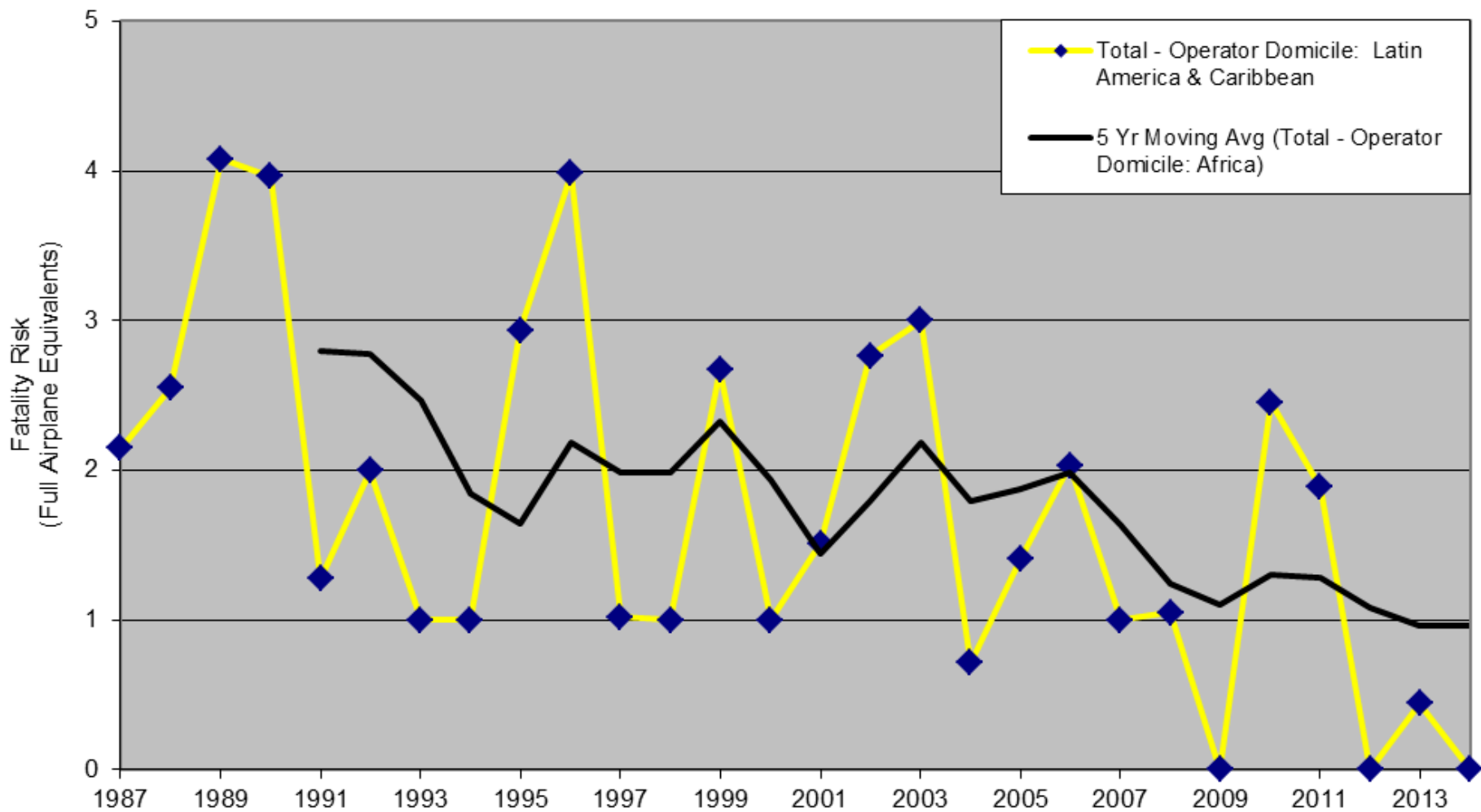
*Western built airplanes, Part 121 equivalent operations; 48 Accidents, 10.27 full Loss Equivalents

Total - Operator Domicile: Latin America & Caribbean



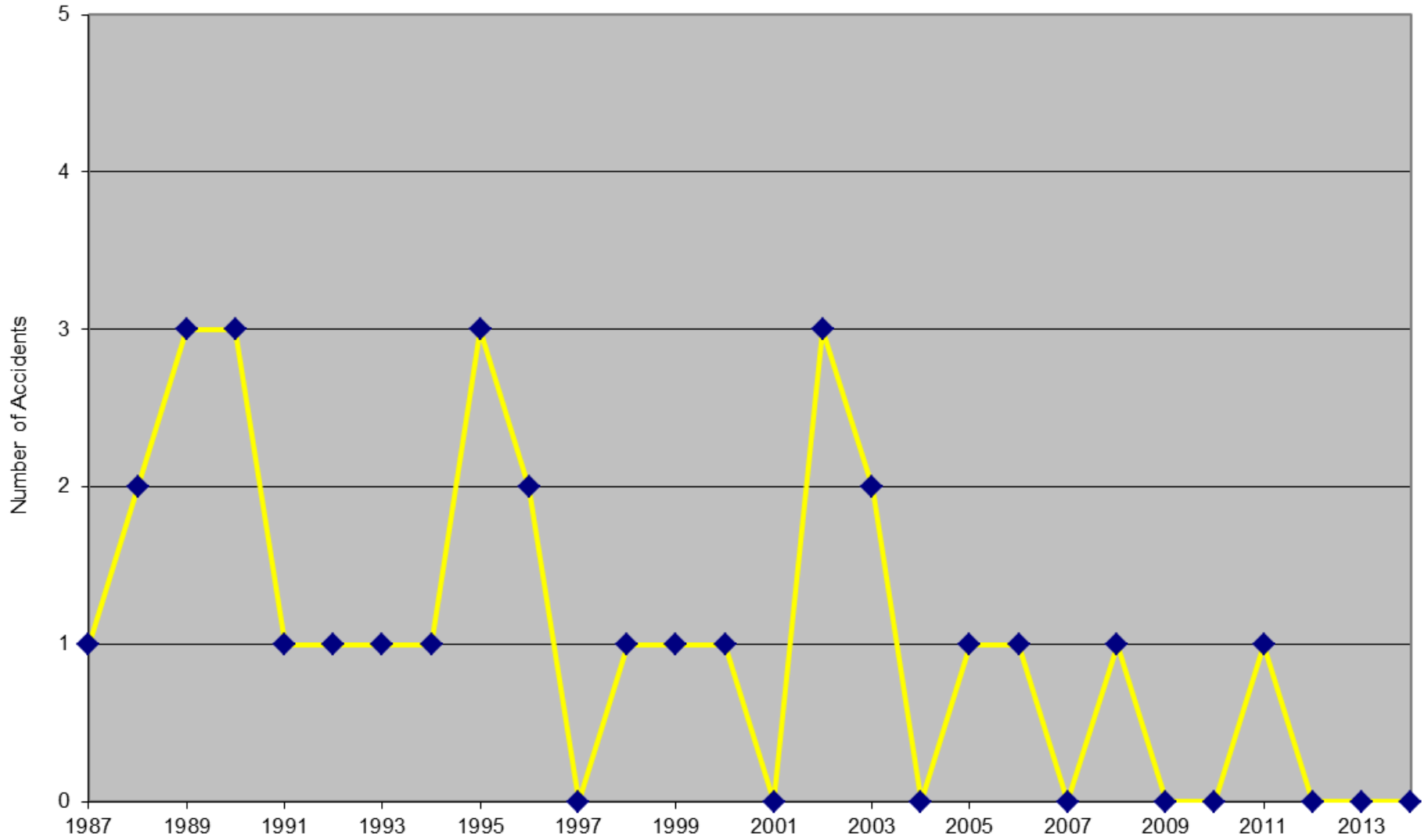
*Western built airplanes, Part 121 equivalent operations

Total - Operator Domicile: Latin America & Caribbean



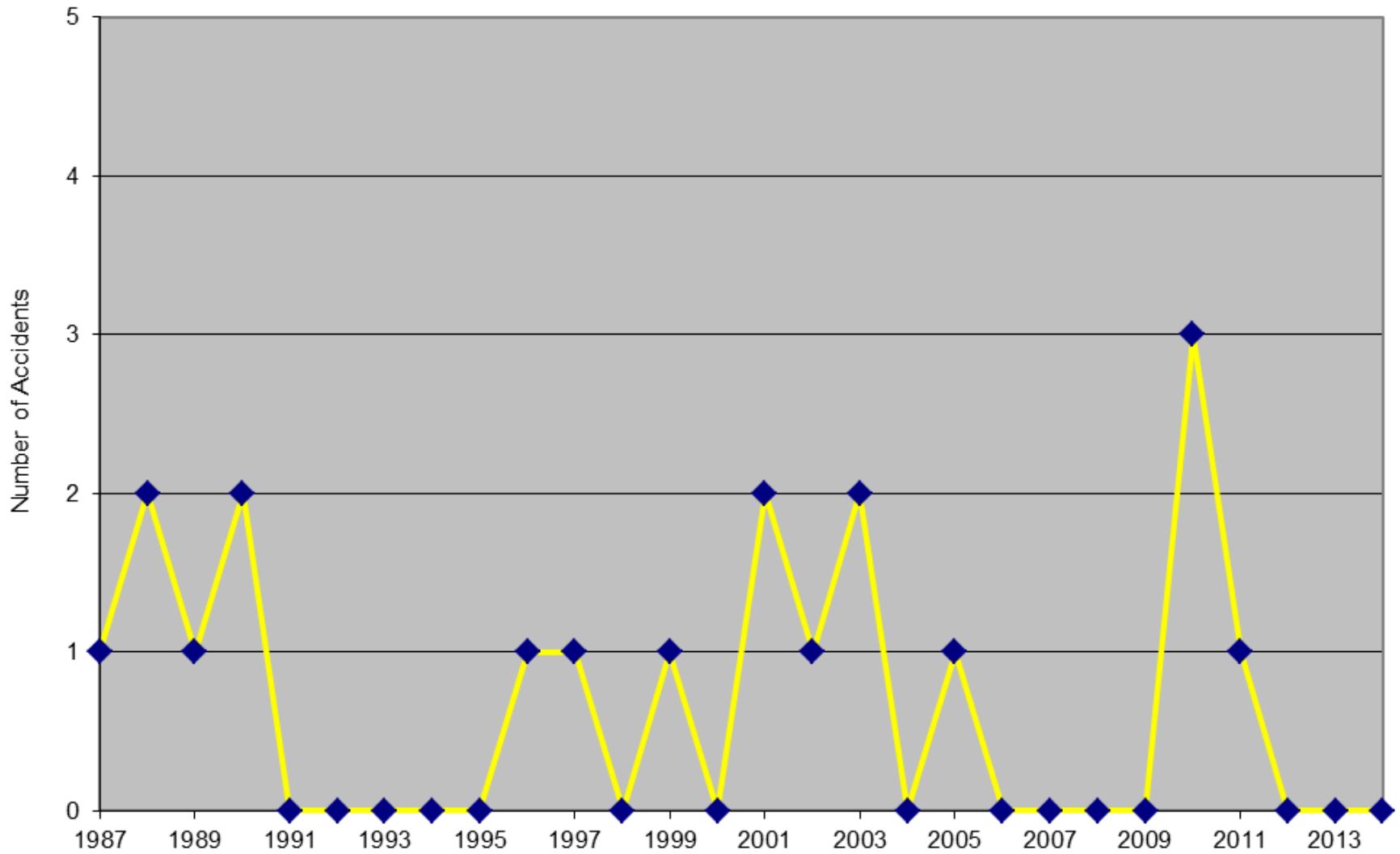
*Western built airplanes, Part 121 equivalent operations: 48.9 full loss equivalents

CFIT - Operator Domicile: Latin America & Caribbean



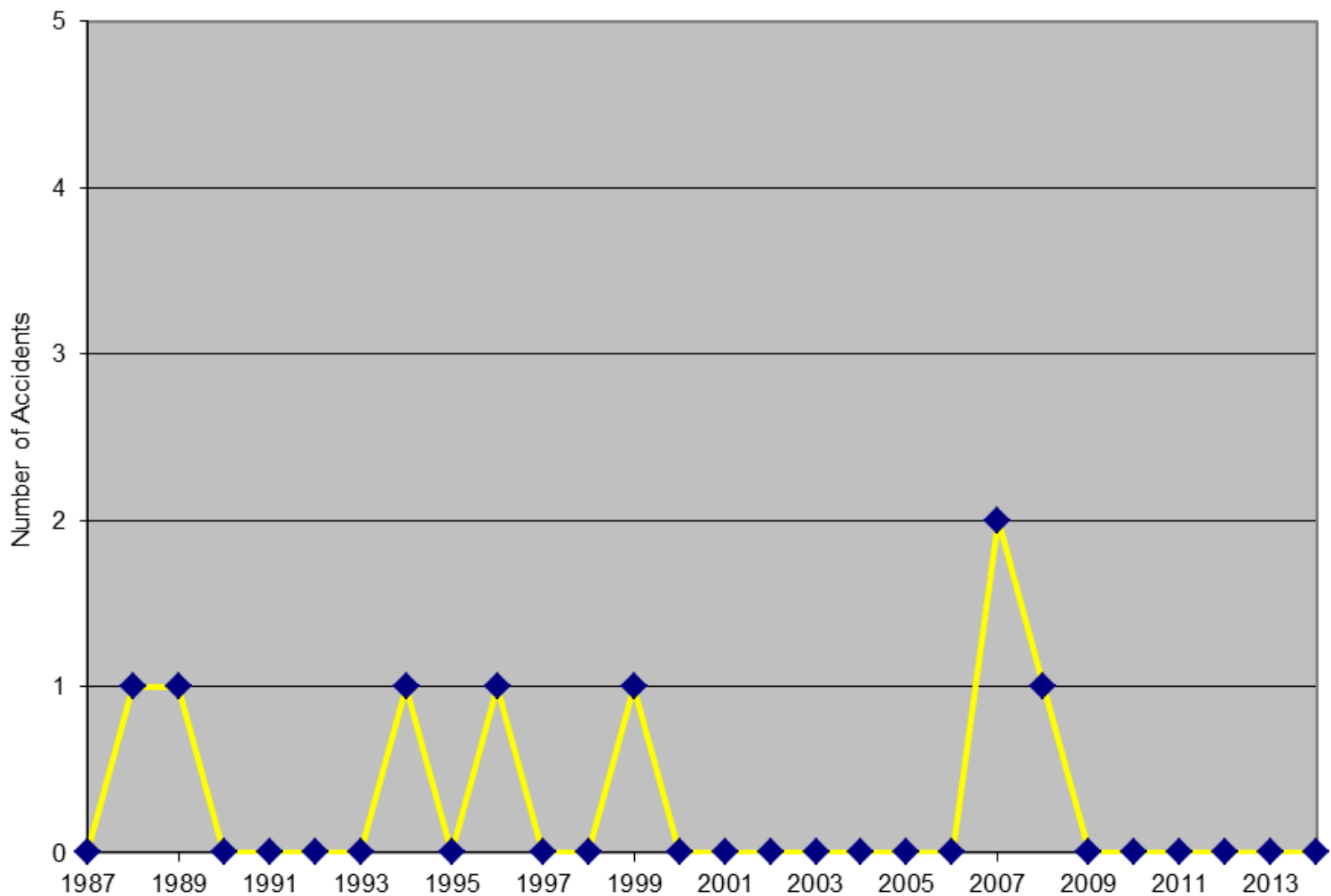
*Western built airplanes, Part 121 equivalent operations

LOC-I - Operator Domicile: Latin America & Caribbean



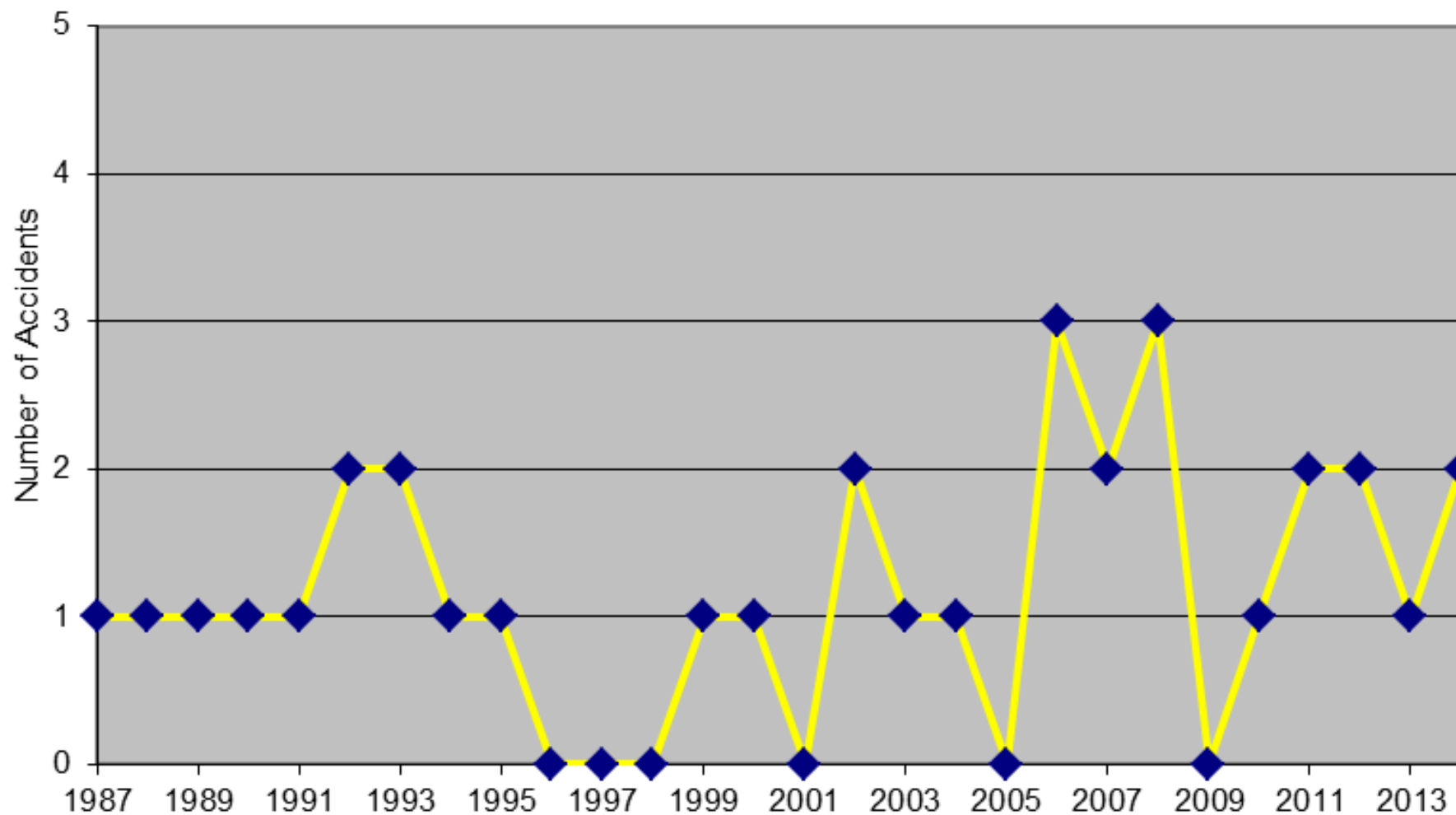
*Western built airplanes, Part 121 equivalent operations

RE-Takeoff - Operator Domicile: Latin America & Caribbean



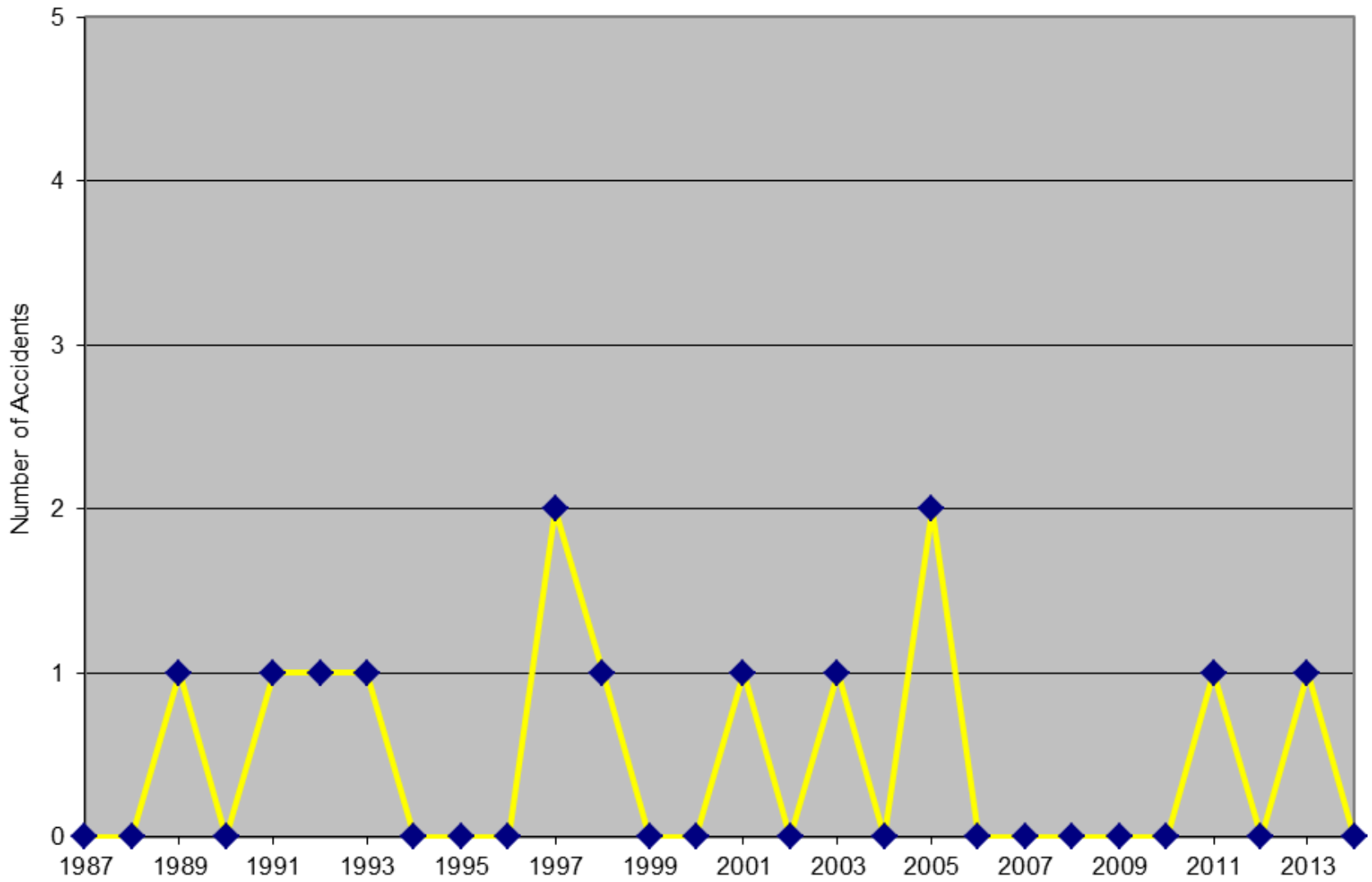
*Western built airplanes, Part 121 equivalent operations

RE-Landing - Operator Domicile: Latin America & Caribbean



*Western built airplanes, Part 121 equivalent operations

ARC - Operator Domicile: Latin America & Caribbean



*Western built airplanes, Part 121 equivalent operations

Category Definition	Number of People	Date	Operator	Operator Country	Location	Aircraft	Jet?
UNK	0.524	5/14/2004	RICO Linhas Aere	Brazil	(near) Manaus, BR	EMB-120	TP-Small
WSTRW	0.000	7/21/2004	Aerocalifornia	Mexico	Mexico City, MX	DC-9	Jet
SCF-PP	0.000	10/22/2004	Southern Air Cha	Bahamas	(near) Nassau, BS	BE-1900	TP-Small
SCF-NP	0.000	10/23/2004	Beta Cargo	Brazil	Manaus, BR	B707	Jet
RE-Landing	0.190	11/18/2004	Venezolana	Venezuela	Caracas, VE	Jetstream 31	TP-Small
ARC	0.000	1/8/2005	AeroRepublica C	Colombia	Cali, CO	MD-80	Jet
SCF-PP	0.000	2/22/2005	TAM - Transporte	Bolivia	Trinidad, BO	Convair 580	TP-Large
USOS	0.000	4/7/2005	ICARO Air	Ecuador	Coca, EC	Fokker F.28	Jet
LOC-I	1.000	8/16/2005	West Caribbean	Colombia	(near) Machiques, VE	MD-80	Jet
CFIT	0.408	8/23/2005	TANS	Peru	(near) Pucallpa, PE	B737 (JT8D)	Jet
ARC	0.000	12/16/2005	NatureAir	Costa Rica	Tamarindo, CR	DHC-6	TP-Small
RE-Landing	0.032	4/16/2006	TAM - Transporte	Brazil	Guayaramerin, BO	Fokker F.27	TP-Large
RE-Landing	0.000	6/1/2006	Air Panama	Panama	Bocas de Toro, PA	Jetstream 31	TP-Small
SCF-NP	0.000	8/17/2006	Aerosucre Colom	Colombia	Bogota, CO	B727	Jet
MIDAIR	1.000	9/29/2006	GOL Linhas Aere	Brazil	(near) Peixote Azevedo	B737 (NG)	Jet
RE-Landing	0.000	11/17/2006	Cielos Airlines	Peru	Barranquilla, CO	DC-10	Jet
CFIT	1.000	11/18/2006	Aerosucre Colom	Colombia	(near) Leticia, CO	B727	Jet
SCF-NP	0.000	2/4/2007	Tampa Cargo	Colombia	MIAMI	DC-8-71F	Jet
Ramp	0.000	3/29/2007	Vigo Jet	Mexico	Panama City, PA	L-188 Electra	TP-Large
SCF-NP	0.000	4/20/2007	Bahamasair	Bahamas	Governors Harbour, BS	Dash-8-300	TP-Large
RE-Landing	1.000	7/17/2007	TAM Linhas Aere	Brazil	Sao Paulo, BR	Airbus A320	Jet
RE-Landing	0.000	7/17/2007	AeroRepublica C	Colombia	Santa Marta, CO	EMB 190	Jet
RE-Takeoff	0.000	10/31/2007	Air Panama	Panama	Panama City, PA	Fokker F.27	TP-Large
RE-Takeoff	0.000	12/16/2007	Atlantic Airlines L	Honduras	La Ceiba, HN	Fairchild F-27	TP-Small
RE-Landing	0.000	1/28/2008	Aires Colombia	Colombia	Bogota, CO	Dash 8-200	TP-Large
FUEL	0.000	2/1/2008	LAB	Bolivia	Near Trinidad	B727-200	Jet
CFIT	1.000	2/21/2008	Santa Barbara Ai	Venezuela	(near) Merida, VE	ATR-42-300	TP-Large
RE-Landing	0.022	5/30/2008	TACA Internation	El Salvador	TEGUIGALPA	A320-200	Jet
SCF-PP	0.028	7/23/2008	TAM - Transporte	Bolivia	70nm from Guayaramer	F.27-400	TP-Large
RE-Takeoff	0.000	9/22/2008	ICARO	Ecuador	Quito, EC	F-28-4000	Jet
RE-Landing	0.000	10/16/2008	Rutaca	Venezuela	CARACAS	B737-200	Jet
SCF-NP	0.000	5/17/2009	Aeroperlas	Panama	Carti, PA	DHC-6-300	TP-Small
USOS	0.200	1/25/2010	Piquatuba Táxi A	Brazil	near Senador José Por	Embraer 110C Ban	TP-Small
LOC-I	1.000	4/13/2010	Aerounion - Aer	Mexico	Monterrey, MX	A300B4-203F	Jet
RE-Landing	0.000	5/5/2010	SATENA	Colombia	Mitu-Fabio, Colombia	ERJ-145LR	Jet
USOS	0.016	8/16/2010	AIRES Colombia	Colombia	San Andres, Colombia	B737-73V (WL)	Jet
LOC-I	0.333	9/13/2010	Conviasa	Venezuela	Puerto Ordaz, Venezue	ATR-42-320	TP-Large
LOC-I	0.907	11/4/2010	Aerocaribbean	Cuba	near Guasimal, Sa...	ATR-72-212	TP-Large
LOC-I	1.000	5/18/2011	SOL Lineas Aére	Argentina	Prahuaniyeu, Argentina	SF34A (26)	TP-Large
RE-Landing	0.000	7/30/2011	CaribbeanAirlines	Trinidad & Tobago	Georgetown, Guyana	737-800	Jet
CFIT	0.889	9/6/2011	Aerocon	Bolivia	Trinidad, Bolivia	SA-227BC Metro II	TP-Small
RE-Landing	0.000	9/16/2011	TAME	Ecuador	Quito, EC	EMB 190(5)	Jet
ARC	0.000	9/26/2011	Aeropostal	Venezuela	Puerto Ordaz, Venezuel	DC-9(35)	Jet
RE-Landing	0.000	8/24/2012	Aserca Airlines	Venezuela	Mayor Buenaventura V	Boeing (McDonnell	Jet
RE-Landing	0.000	12/31/2012	EasySky	Honduras	Ramon Villeda Morales	BAE SYSTEMS (Je	TP-Small
GCOL	0.000	1/2/13	Sol Lineas Ae	Argentina	El Plumerillo Airpor	Saab 340 A	TP-Small
ARC	0.000	4/16/13	Aeromexico	Mexico	Barajas Internation	Boeing 767 200	Jet
RE-Landing	0.000	6/13/13	Sky Bahamas	Bahamas	Marsh Harbour Airp	Saab 340 B	TP-Small
USOS	0.444	11/3/13	AeroCon	Bolivia	Riberalta Airport, Rit	Fairchild (Swea	TP-Small

Category Defi	Severity (Port	Date	Operator	Operator Country	Location	Aircraft	Jet?
RE-Landing	0.000	1/18/2014	Aeronaves TSI	Mexico	Plan de Guadalupe	DC-9	Jet
SCF-NP	0.000	3/28/2014	Avianca Brazil	Brazil	Brasilia Internationa	Fokker 100	Jet
RE-Landing	0.000	10/12/2014	ACSA - Air Ce	Dominican Repub	Punta Cana Internat	Jetstream 31	Turbo Prop
SCF-NP	0.000	7/28/2014	Taxi Aereo Ri	Brazil	Aparecidinha distric	EMB-110 Band	Turbo Prop