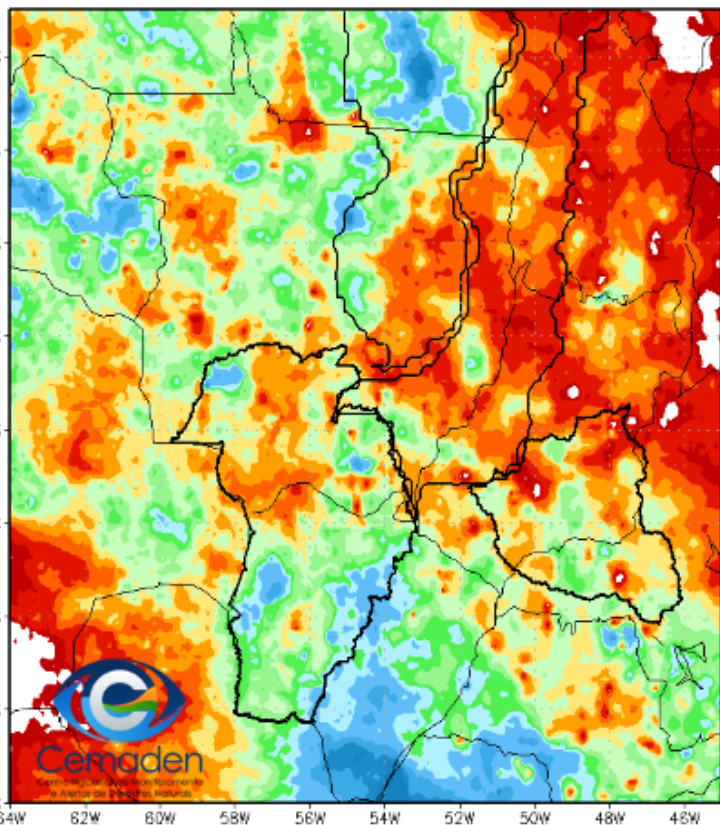


Monitoramento, previsões e impactos da situação de seca no Pantanal

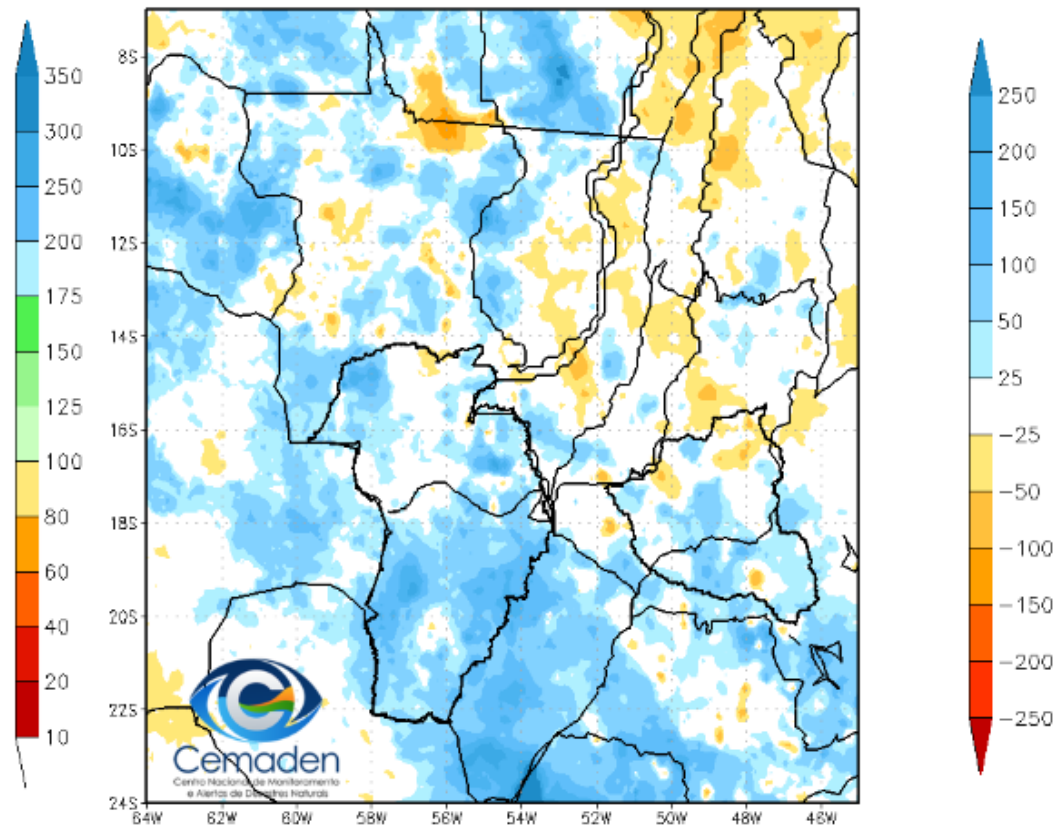
São José dos Campos, 20 de Outubro de 2022

Precipitação nos últimos 30 dias

Precipitação Acumulada (mm) A.S.
Período: 19/09/2022 a 19/10/2022

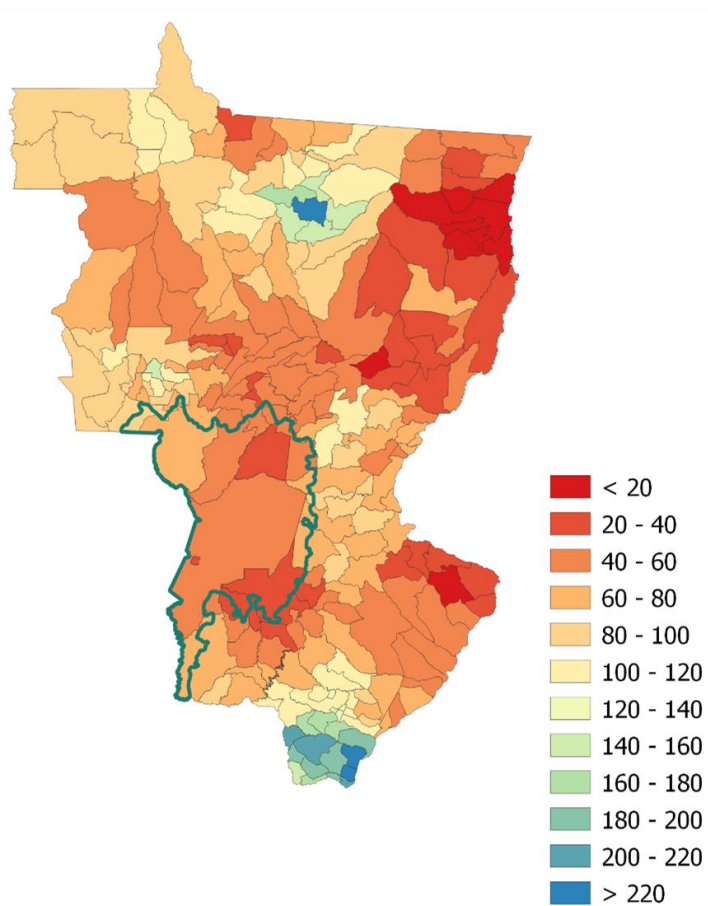


Anomalia de Precipitação (mm) A.S.
Período: 19/09/2022 a 19/10/2022

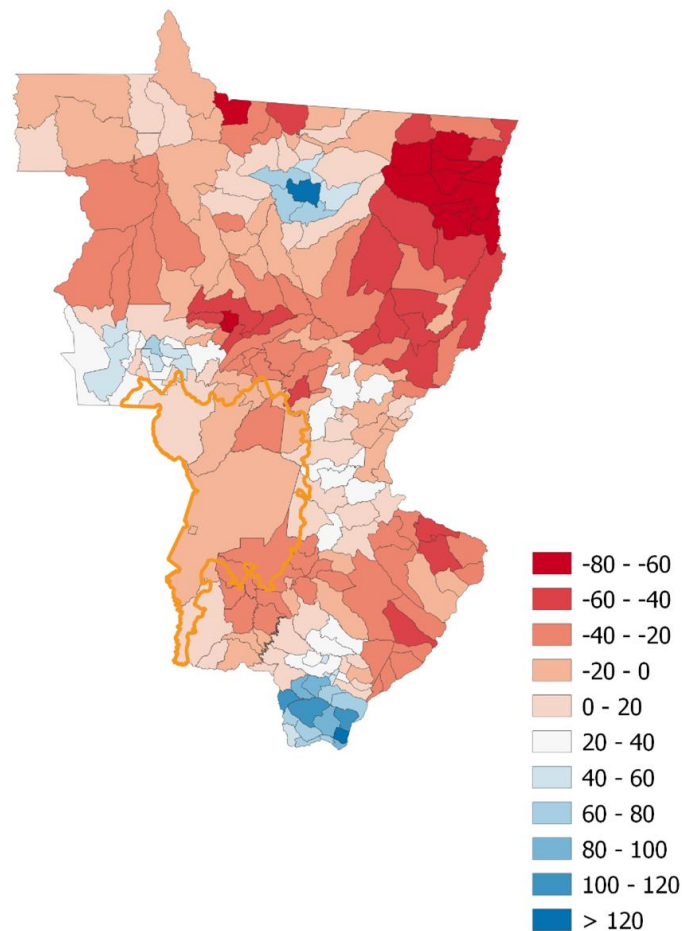


Precipitação – Outubro/2022 (até dia 19/10)

Chuva acumulada (mm)

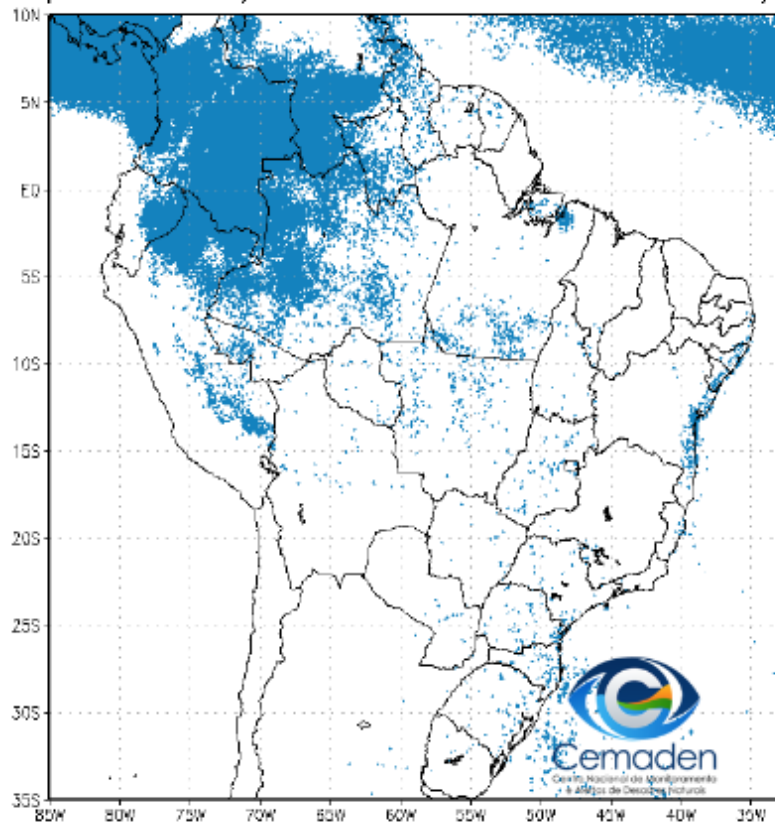


% de precipitação do total

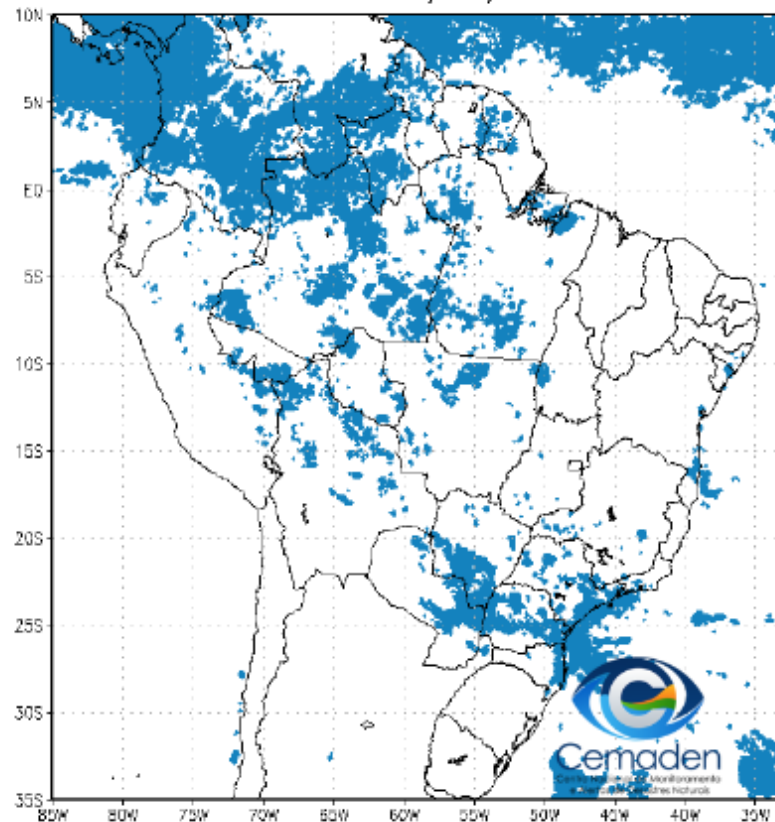


Andamento da Estação Chuvosa

Climatologia da Precipitação (2001–2020)
Superior 3 mm/dia em 4 de 5 dias Período: 19/10

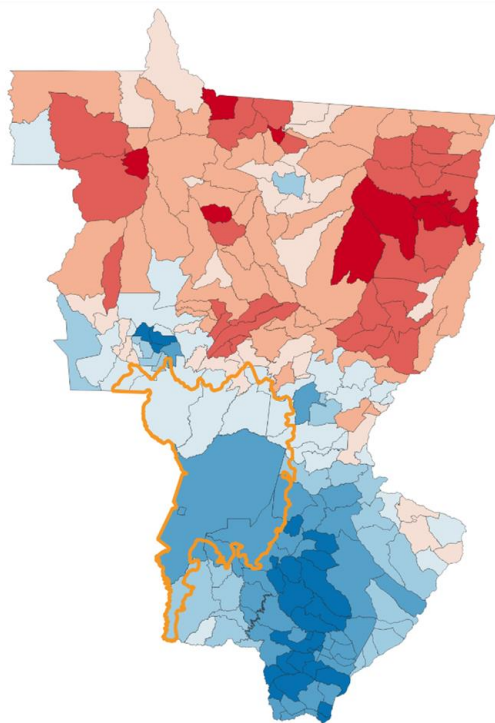


Precipitação A.S. Superior a 3 mm/dia por 4 de 5 dias
Período: 19/10/2022

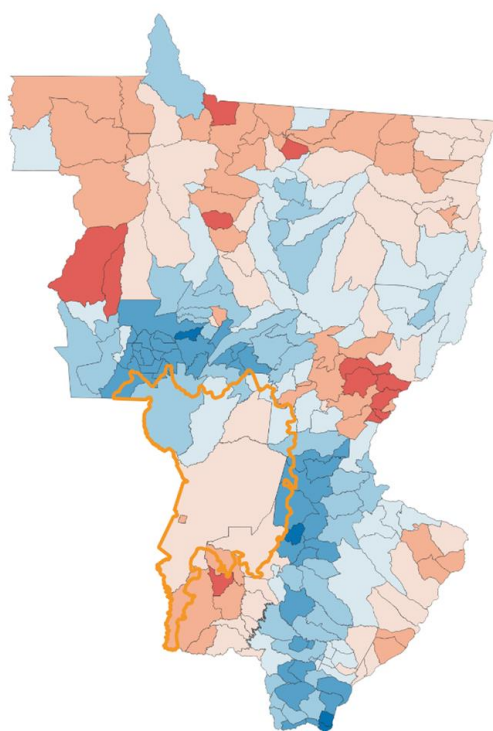


SPI: Outubro de 2022

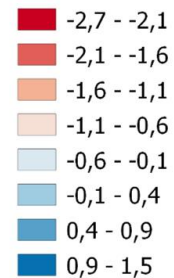
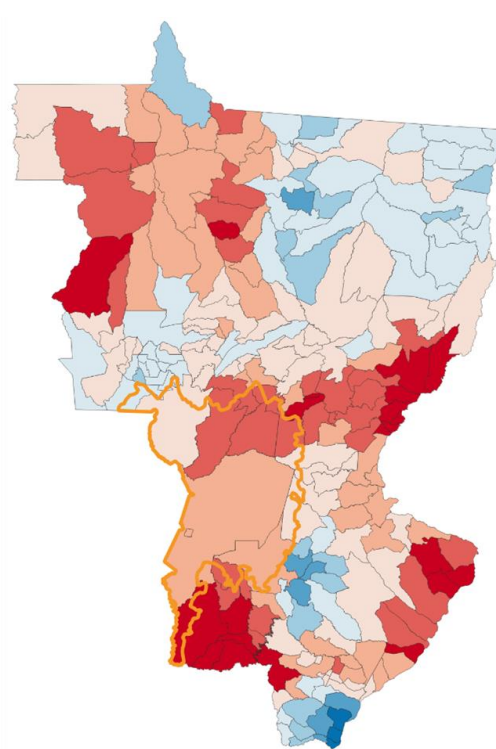
SPI03



SPI12

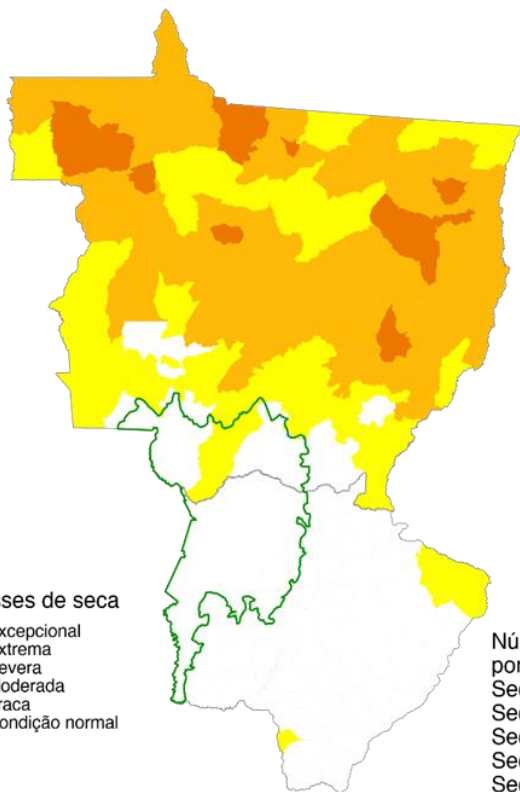


SPI24



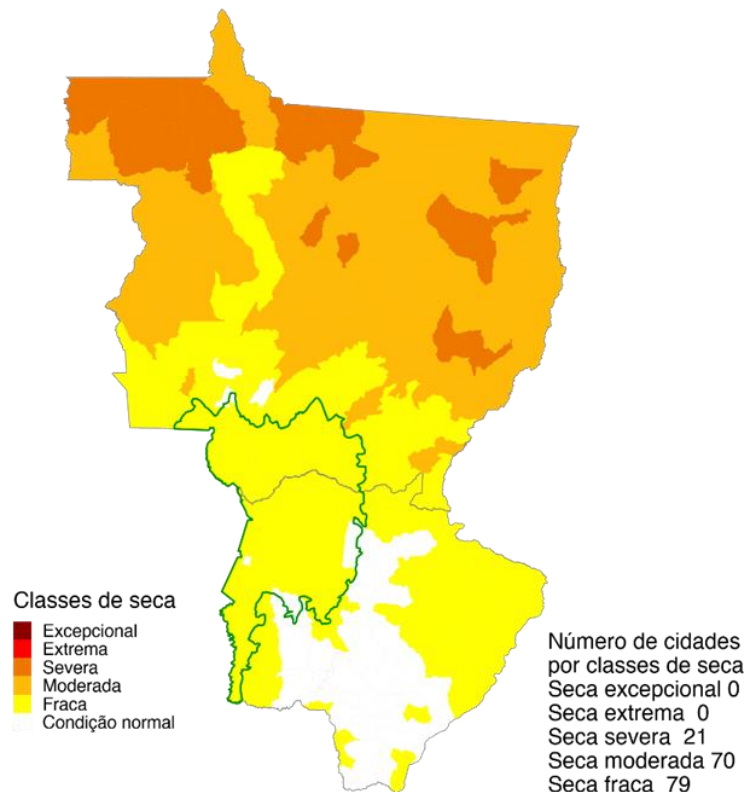
Índice Integrado de Seca – IIS nas escalas de 3 e 6 meses

IIS3



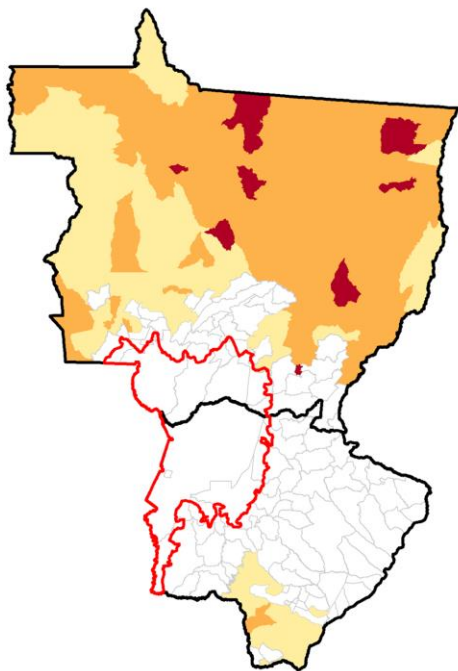
Setembro 2022
Índice Integrado de Seca (SPI3, VHI, US)
Dados: CPTEC/INPE - NOAA - NASA / Preparação: Cemaden/MCTI

IIS6



Setembro 2022
Índice Integrado de Seca (SPI6, VHI, US)
Dados: CPTEC/INPE - NOAA - NASA / Preparação: Cemaden/MCTI

Áreas Agroprodutivas afetadas pela seca: 14 de Outubro



Ressalta-se, que na porção sul do MS está vigente o período de plantio de feijão, milho e soja, assim, o sinal de seca está relacionado ao solo exposto.

	40 a 60%	60 - 80%	> 80%	Imóveis Rurais Impactados > 40%
MT				
Minifundio	12360 (18%)	30695 (45%)	9385 (14%)	52440 (77%)
Pequena Propriedade	5962 (17%)	18009 (52%)	4450 (13%)	28421 (82%)
Media Propriedade	3879 (22%)	8874 (50%)	860 (5%)	13613 (76%)

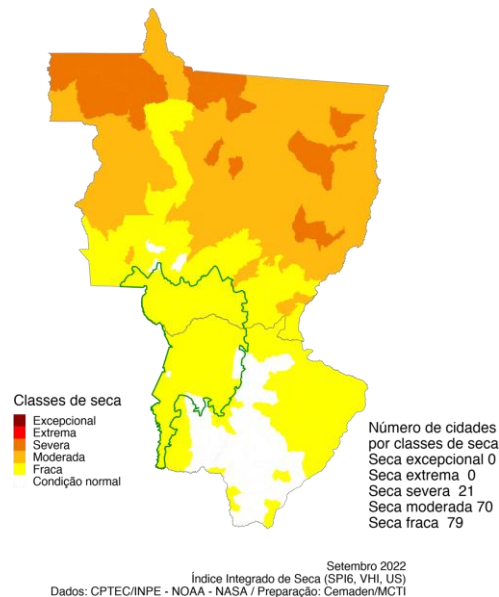
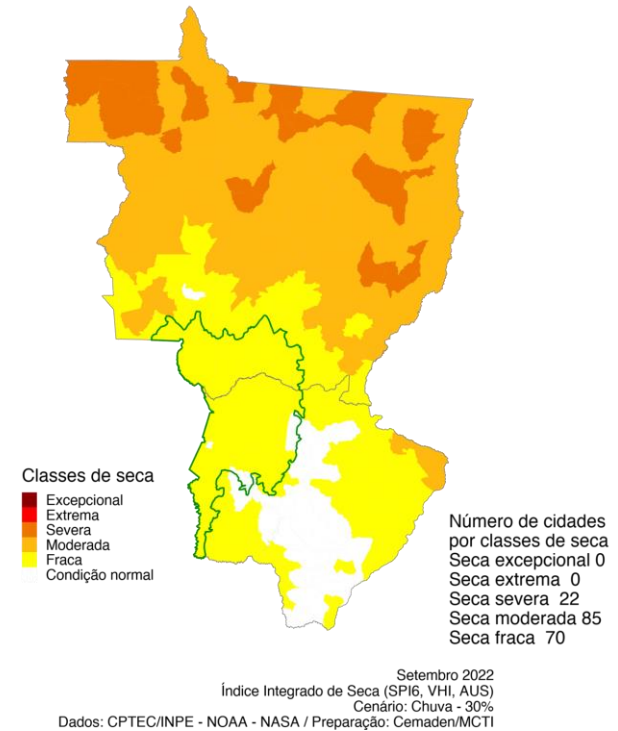
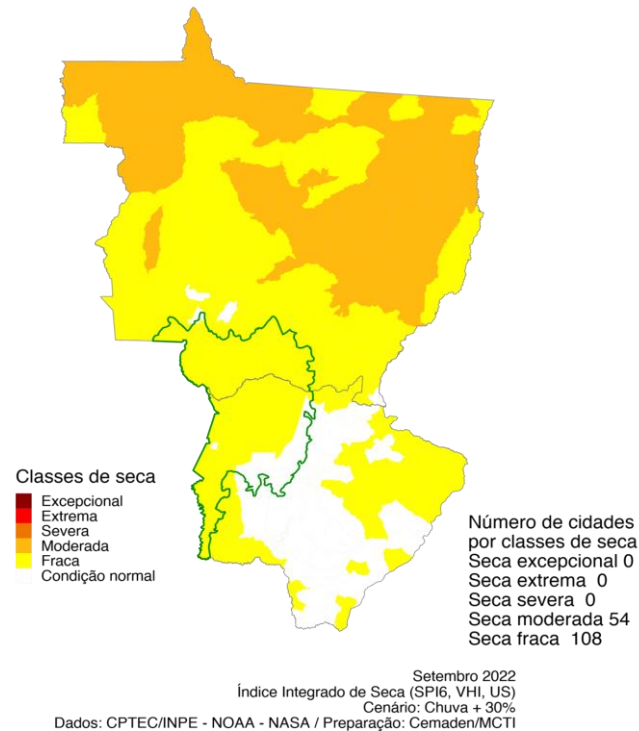
*Estimativa a partir dos dados do Cadastro Ambiental Rural para minifúndios, pequenas e médias propriedades e VHI (Satélite)

Cenários IIS: Região Sul: Novembro/22

Chuva 30% ACIMA da média

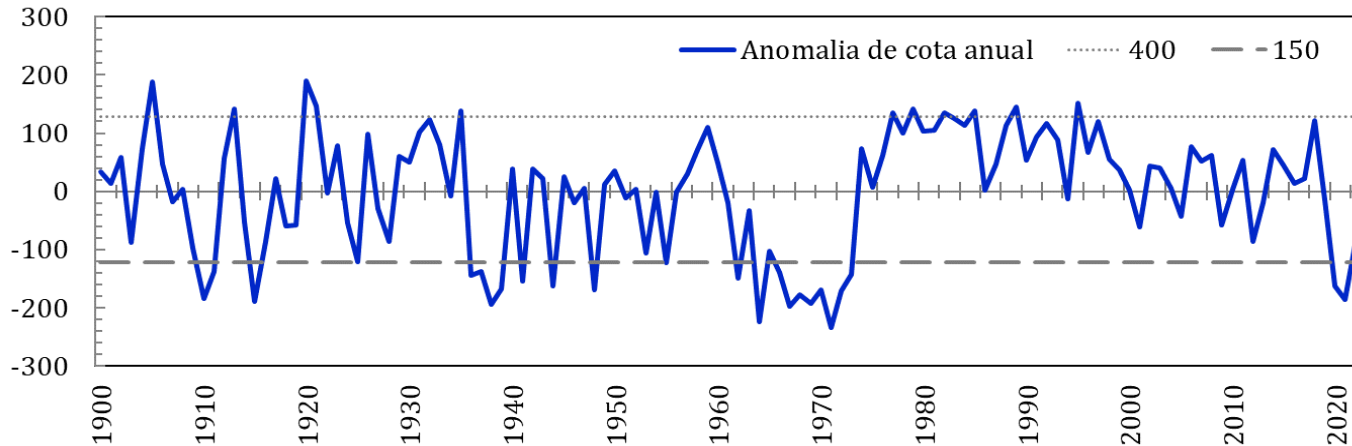
Chuva 30% ABAIXO da média

IIS6 observado (outubro)



Rio Paraguai

Estação: 66825000 – LADÁRIO (BASE NAVAL)



COTA MENSAL

20/Out/21

-56 cm



20/Out/22

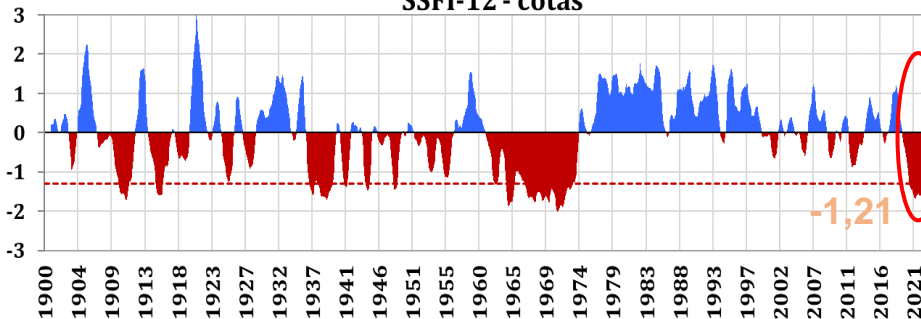
71 cm

Aumento de 127 cm

Índice de Vazão Padronizada - SSFI

Estação: 66825000 – LADÁRIO (BASE NAVAL)

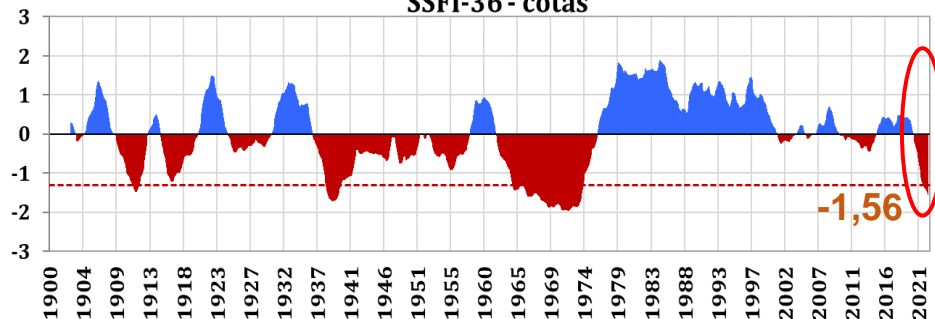
SSFI-12 - cotas



Seca hidrológica Moderada

Estação: 66825000 – LADÁRIO (BASE NAVAL)

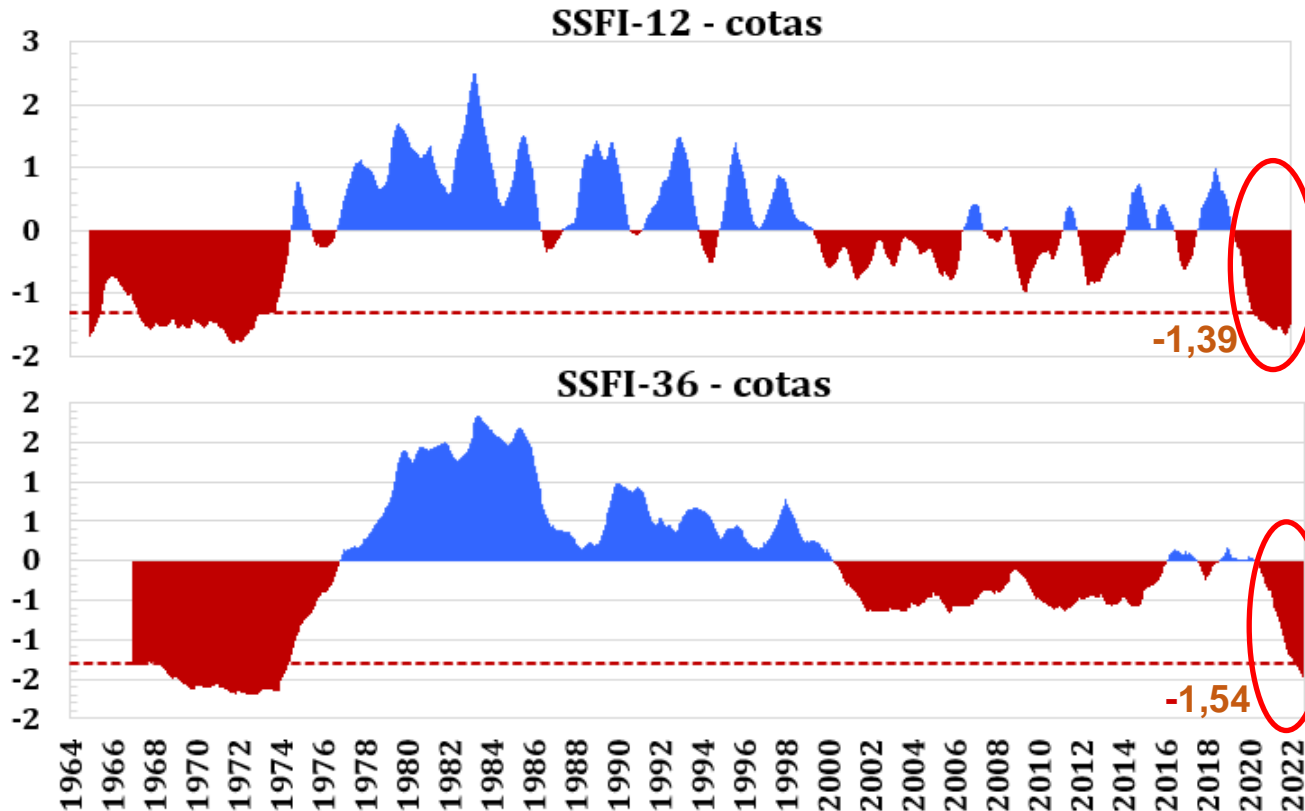
SSFI-36 - cotas



Seca hidrológica Severa

Rio Paraguai

Estação: 67100000 – Porto Murtinho



**Seca
hidrológica
Severa**

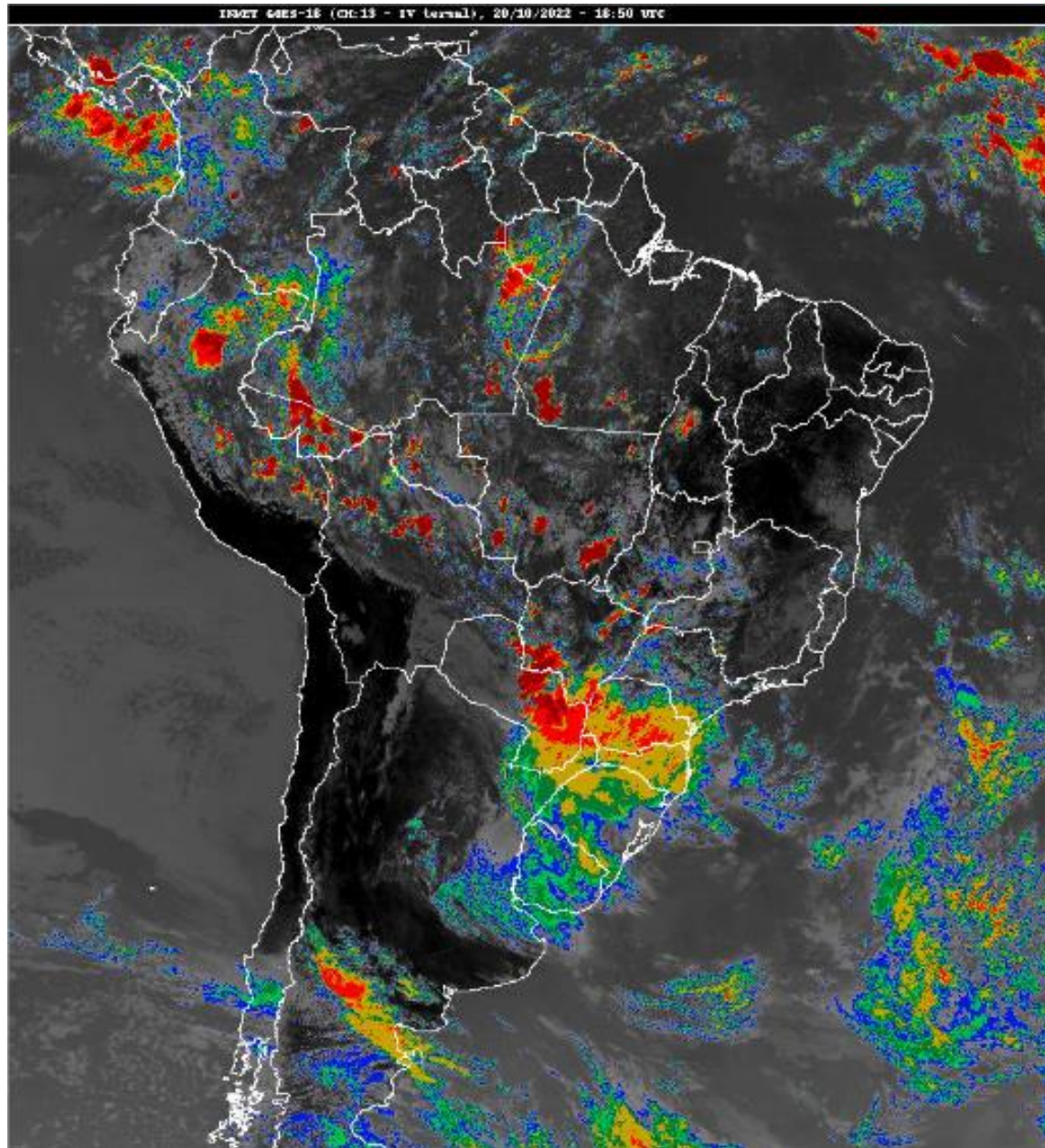
**COTA
MENSAL**

**20/Out/21
90 cm**

**20/Out/22
202 cm**

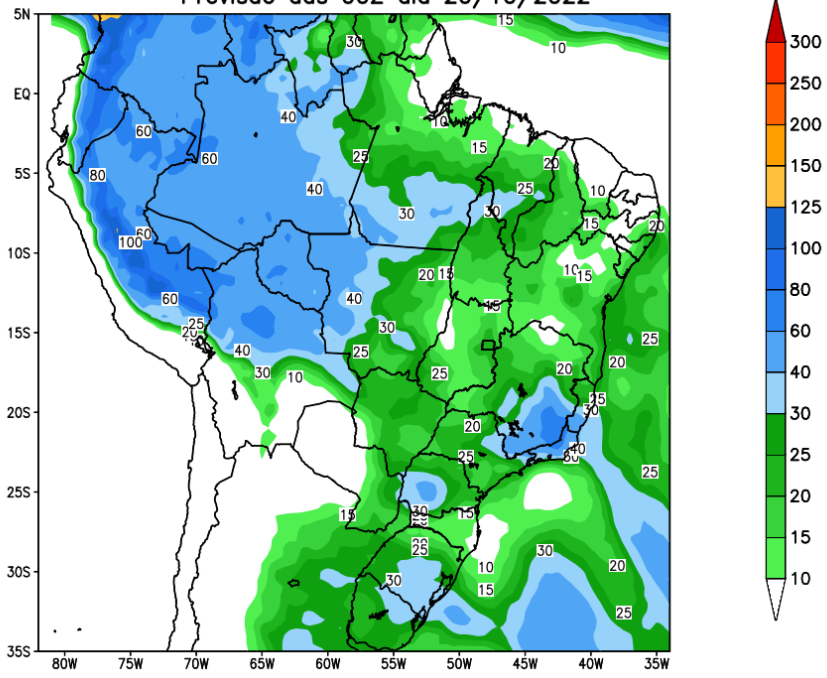
Aumento de 112 cm

Situação meteorológica

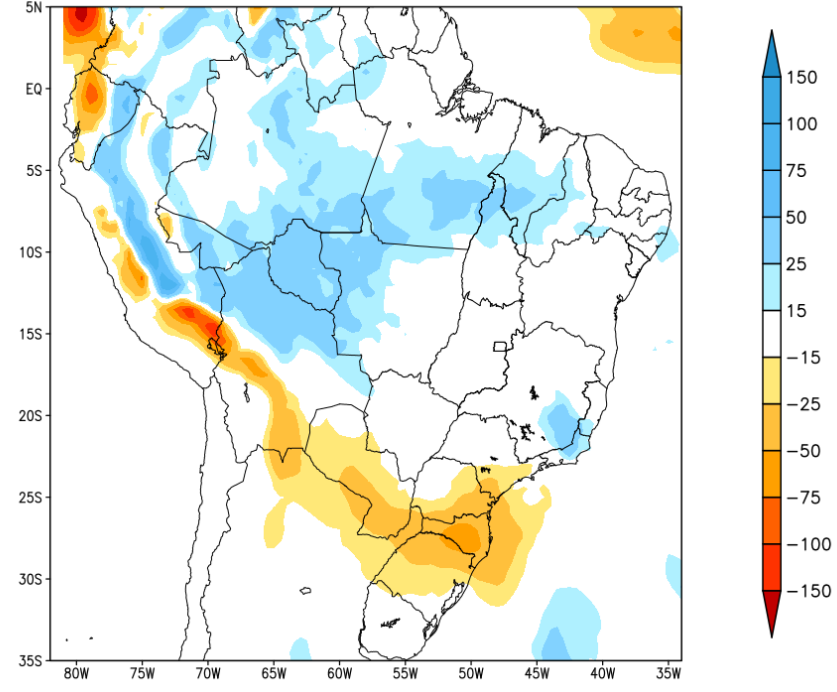


Previsão para as próxima semana

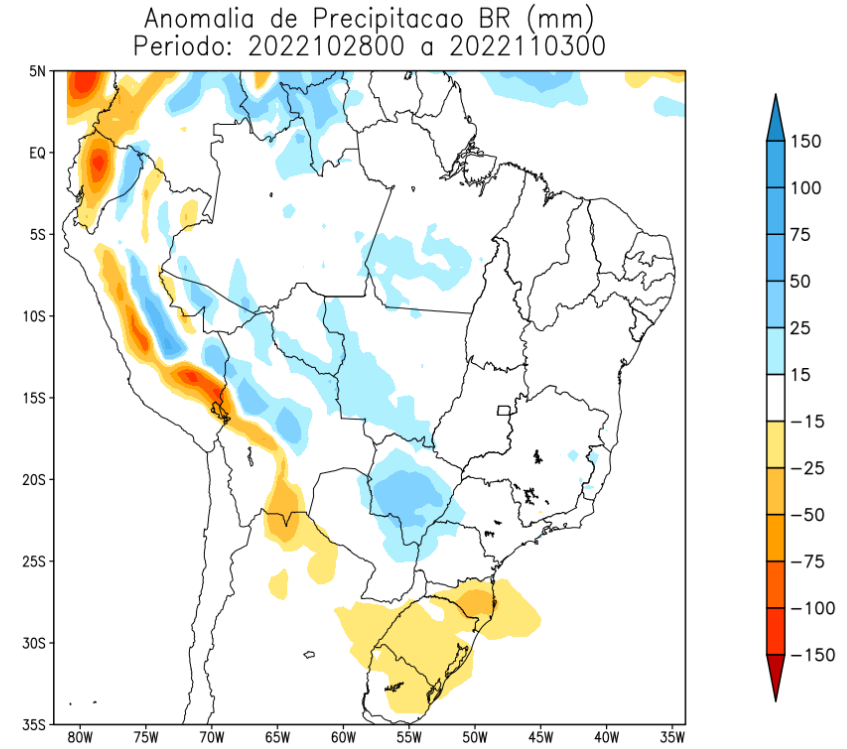
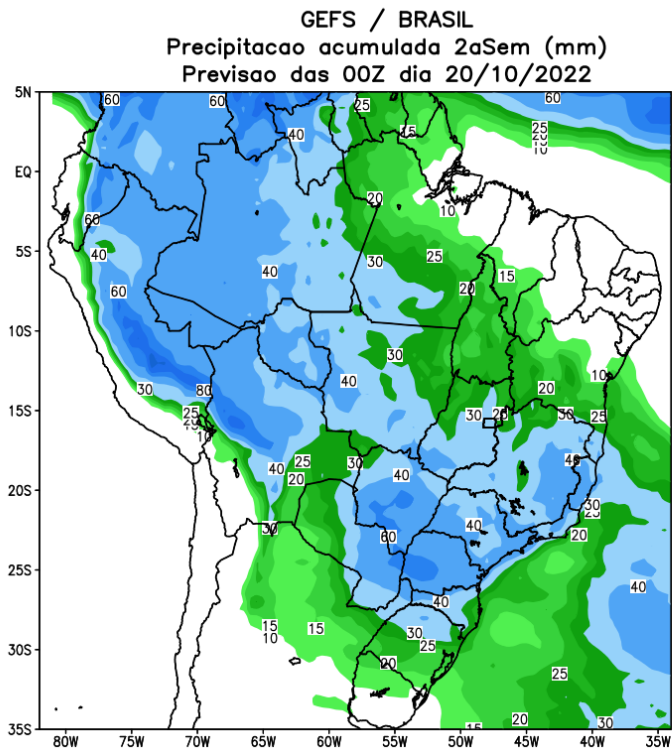
GEFS / BRASIL
Precipitacao acumulada 1aSem (mm)
Previsao das 00Z dia 20/10/2022



Anomalia de Precipitacao BR (mm)
Periodo: 2022102000 a 2022102700



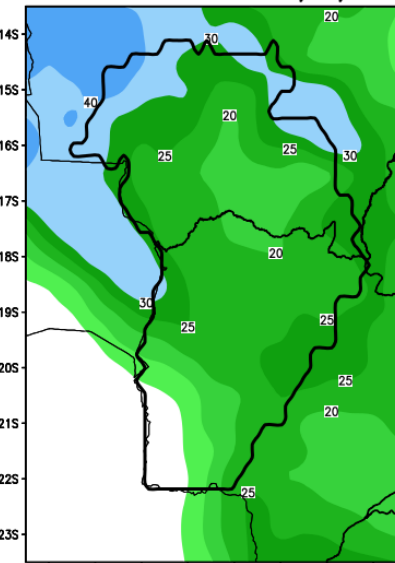
Tendência para a segunda semana



Previsão de chuva Bacia do Alto Paraguai

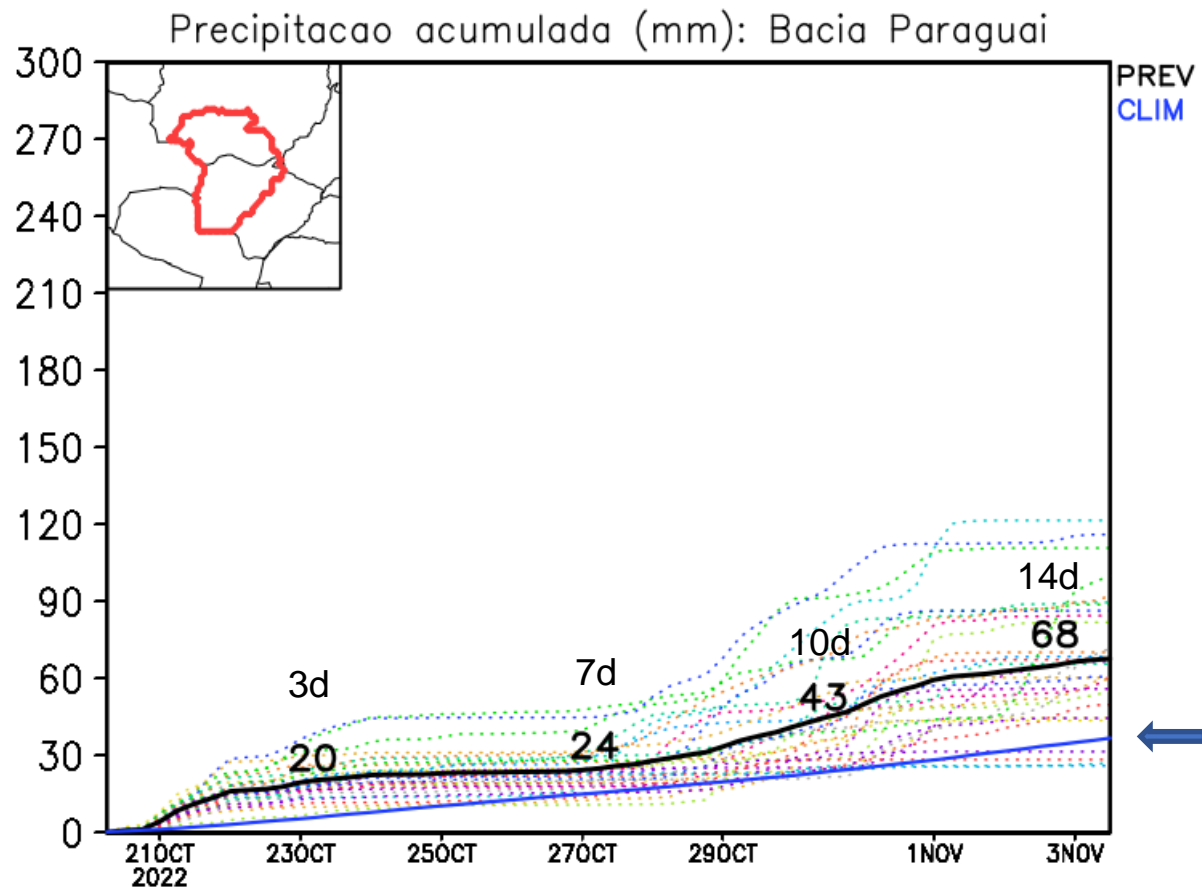
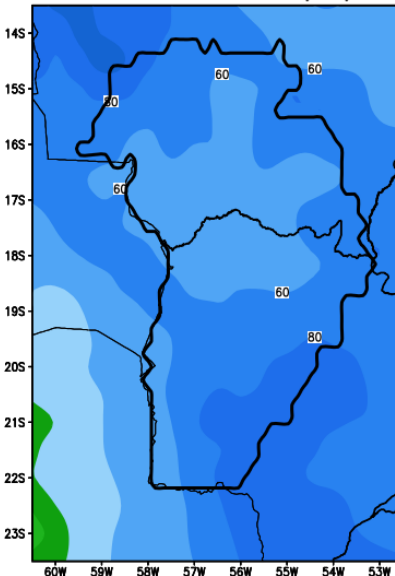
GEFS / Bacia do Rio Paraguai
Precipitação acumulada em 7 dias (mm)
Previsão das 00Z dia 20/10/2022

7 dias



GEFS / Bacia do Rio Paraguai
Precipitação acumulada em 15 dias (mm)
Previsão das 00Z dia 20/10/2022

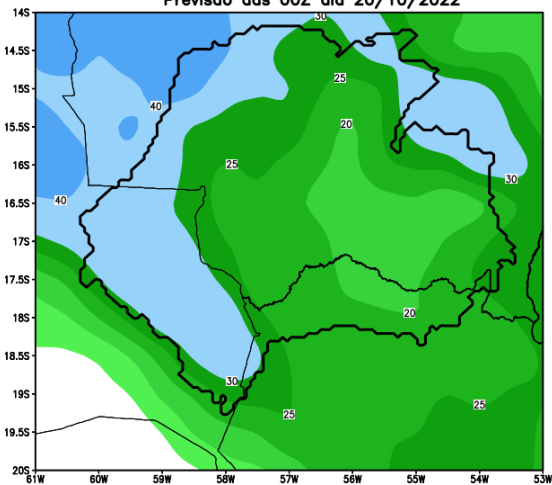
14 dias



Previsão de chuva sub Bacia de Ladario

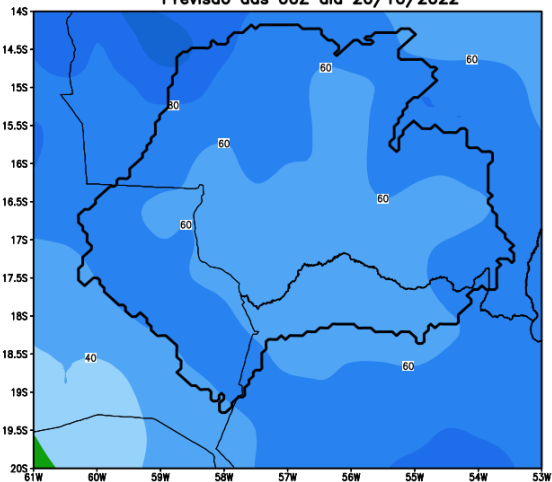
7 dias

GEFS / Bacia Ladario
Precipitacao acumulada em 7 dias (mm)
Previsao das 00Z dia 20/10/2022

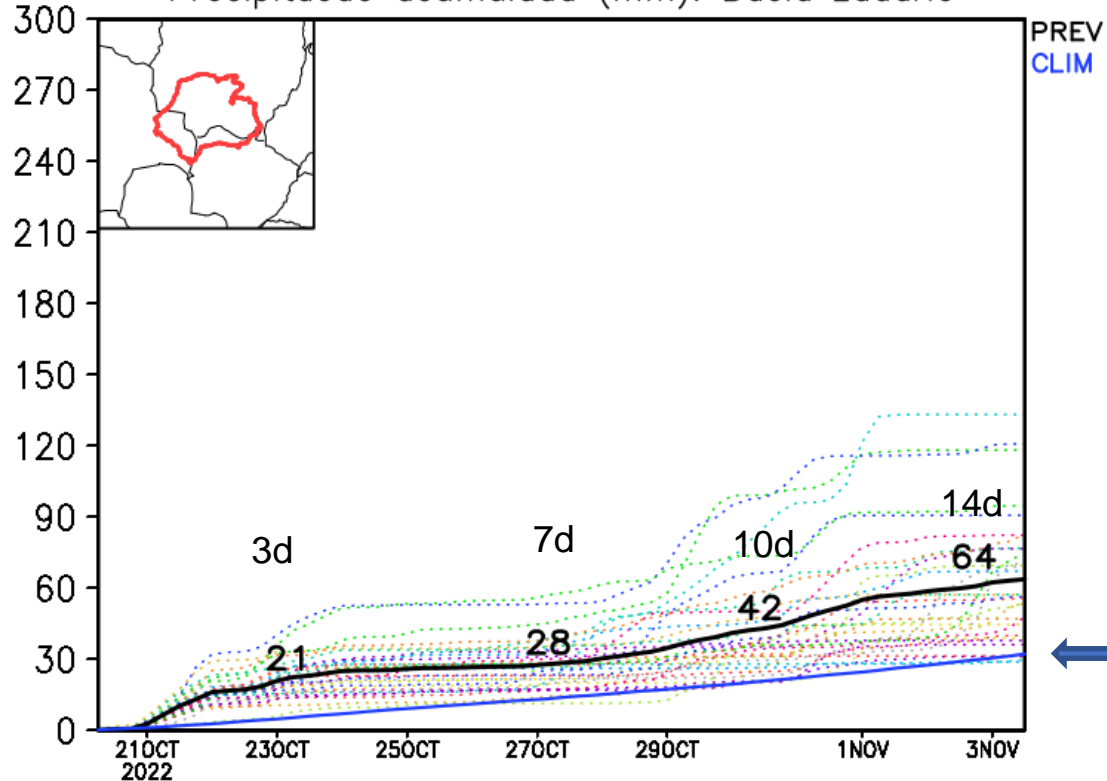


14 dias

GEFS / Bacia Ladario
Precipitacao acumulada em 14 dias (mm)
Previsao das 00Z dia 20/10/2022



Precipitacao acumulada (mm): Bacia Ladario

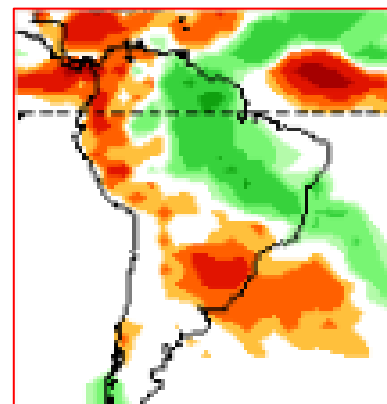
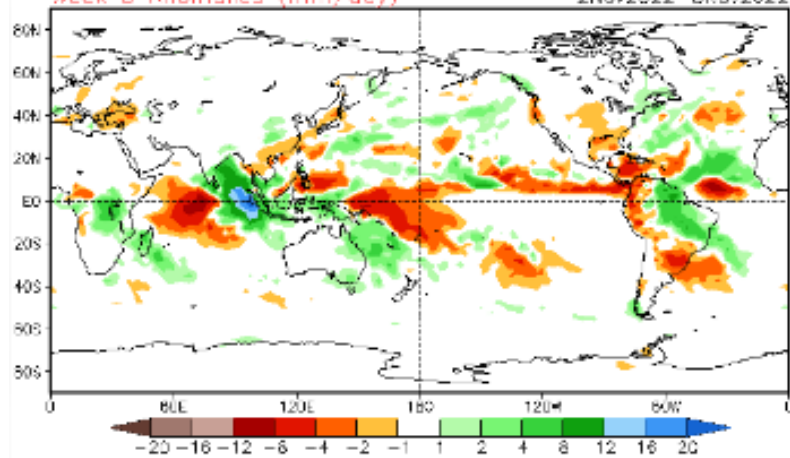


Tendência 3a e 4a semanas

16 Member Ensemble Mean Forecast from 18Oct2022

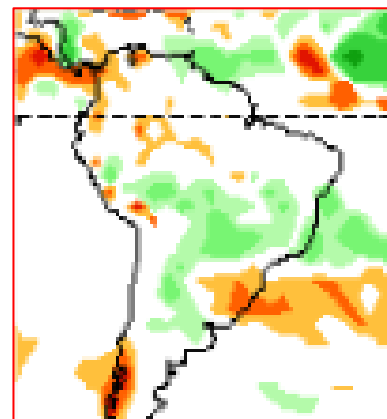
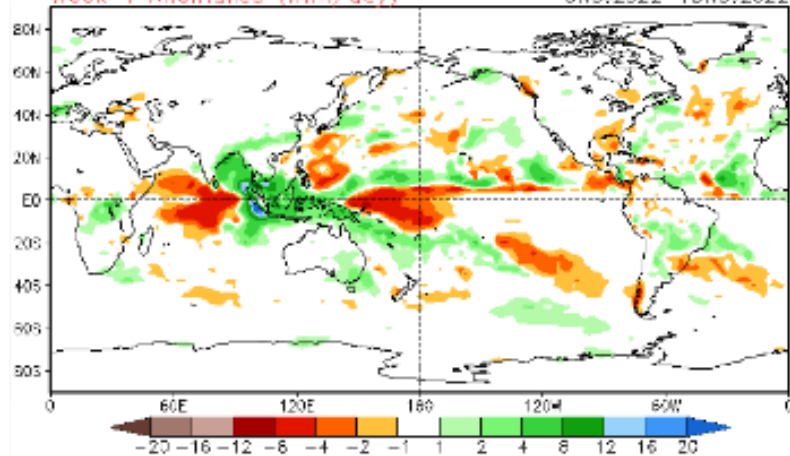
Week 3 Anomalies (mm/day)

2Nov2022-8Nov2022



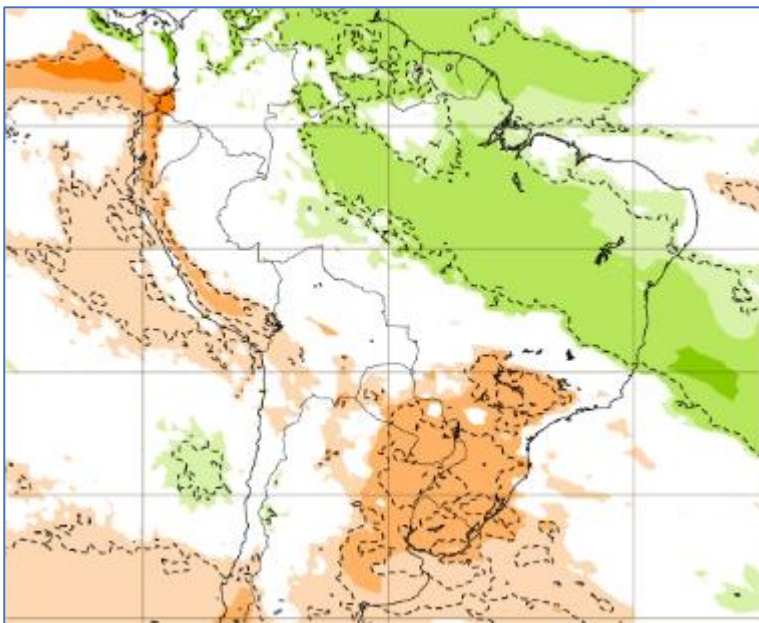
Week 4 Anomalies (mm/day)

9Nov2022-15Nov2022

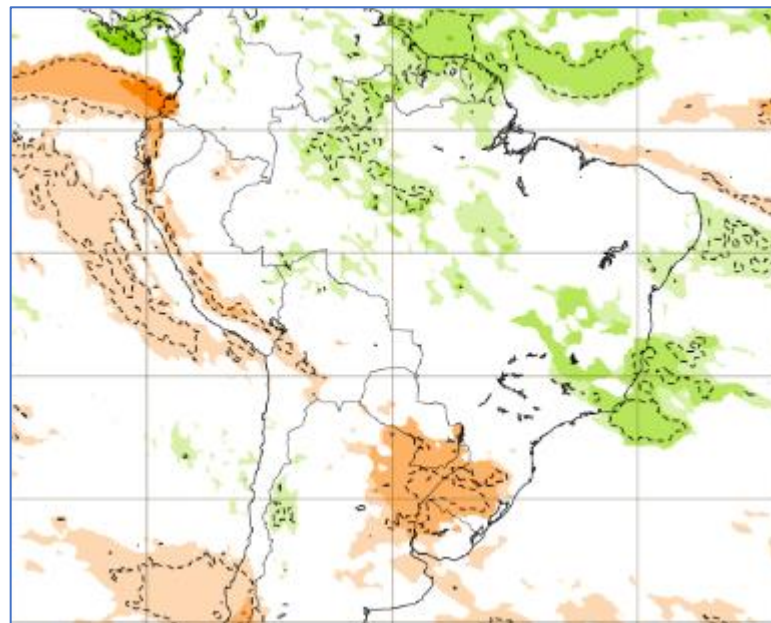


Tendência para 3ª e 4ª semanas

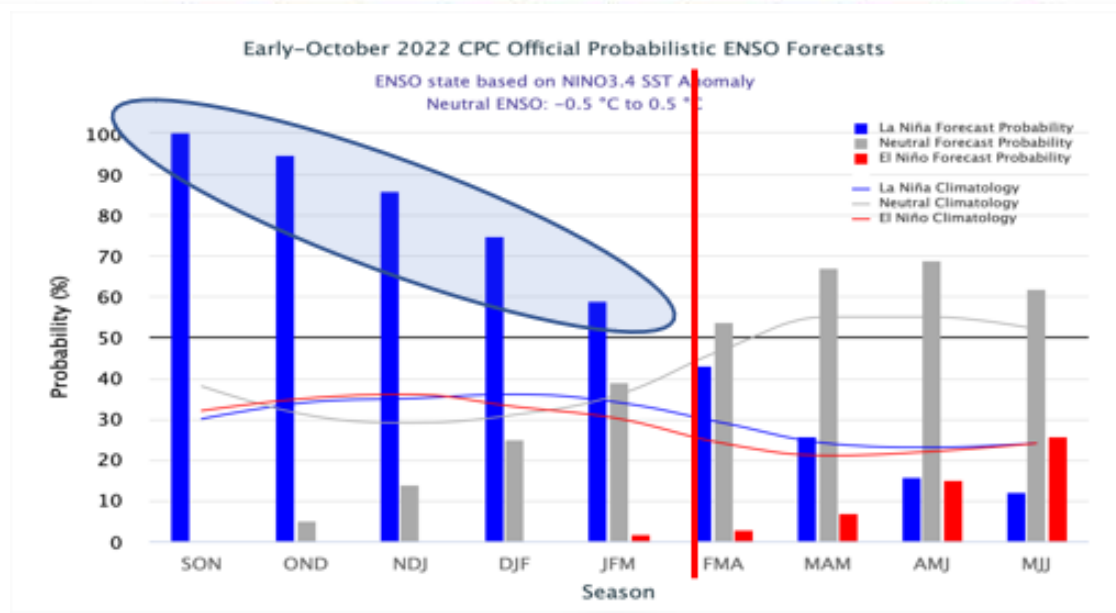
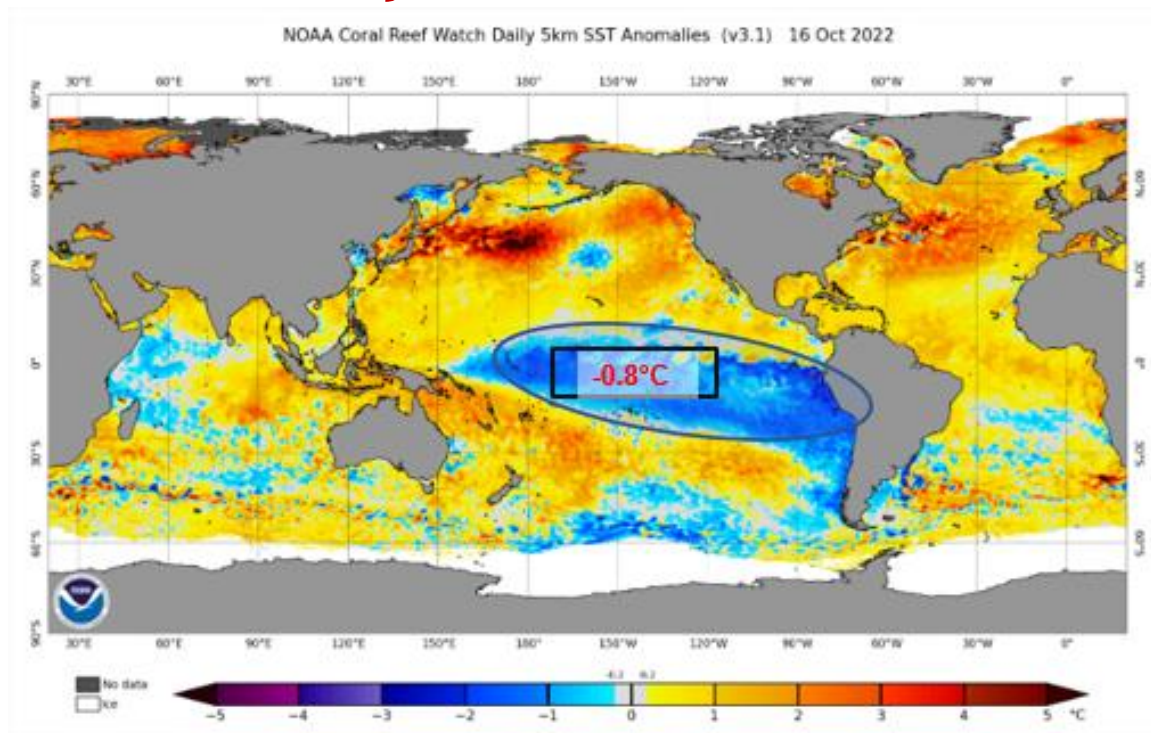
31/10-07/11



07-14/11



Situação do “La Niña”



Previsão sazonal de Chuva NDJ

