

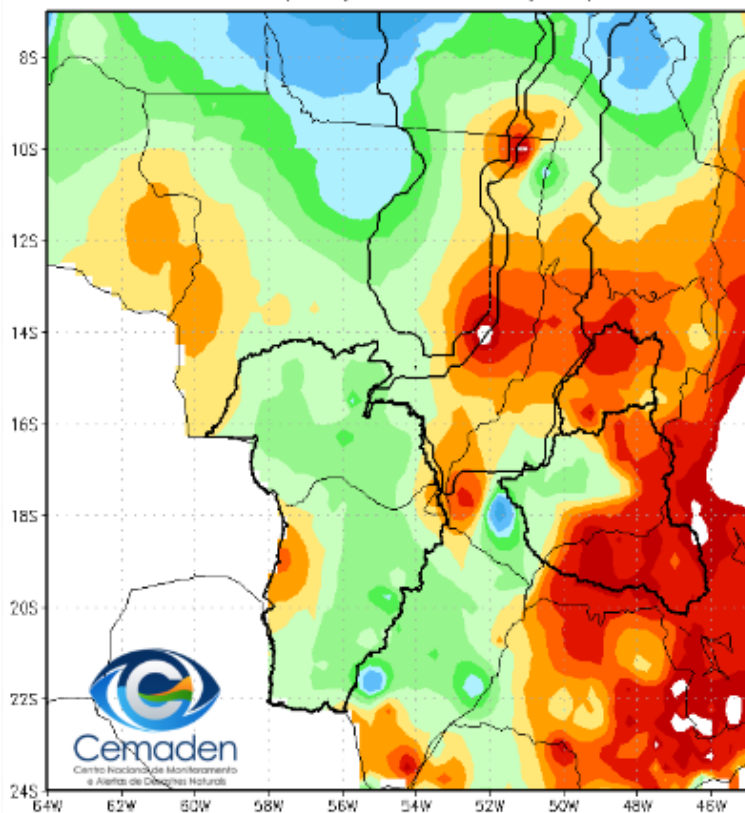
Monitoramento, previsões e impactos da situação de seca no Pantanal

São José dos Campos, 07 de Maio de 2024

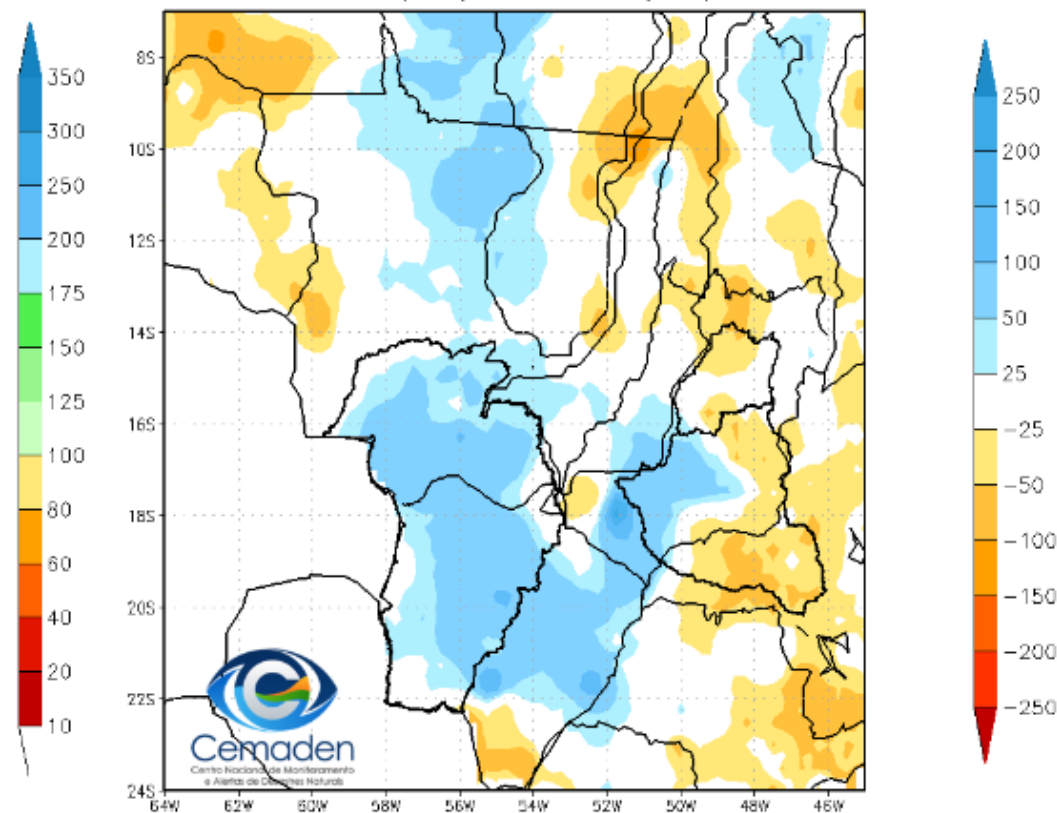


Precipitação nos últimos 30 dias

Precipitação Acumulada (mm) A.S.
Período: 06/04/2024 a 06/05/2024

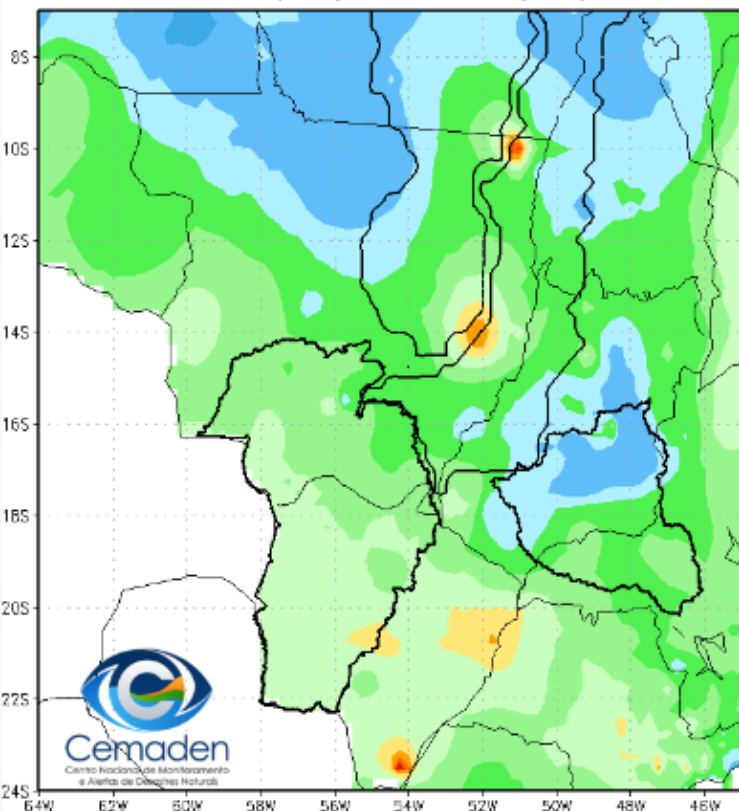


Anomalia de Precipitação (mm) A.S.
Período: 06/04/2024 a 06/05/2024

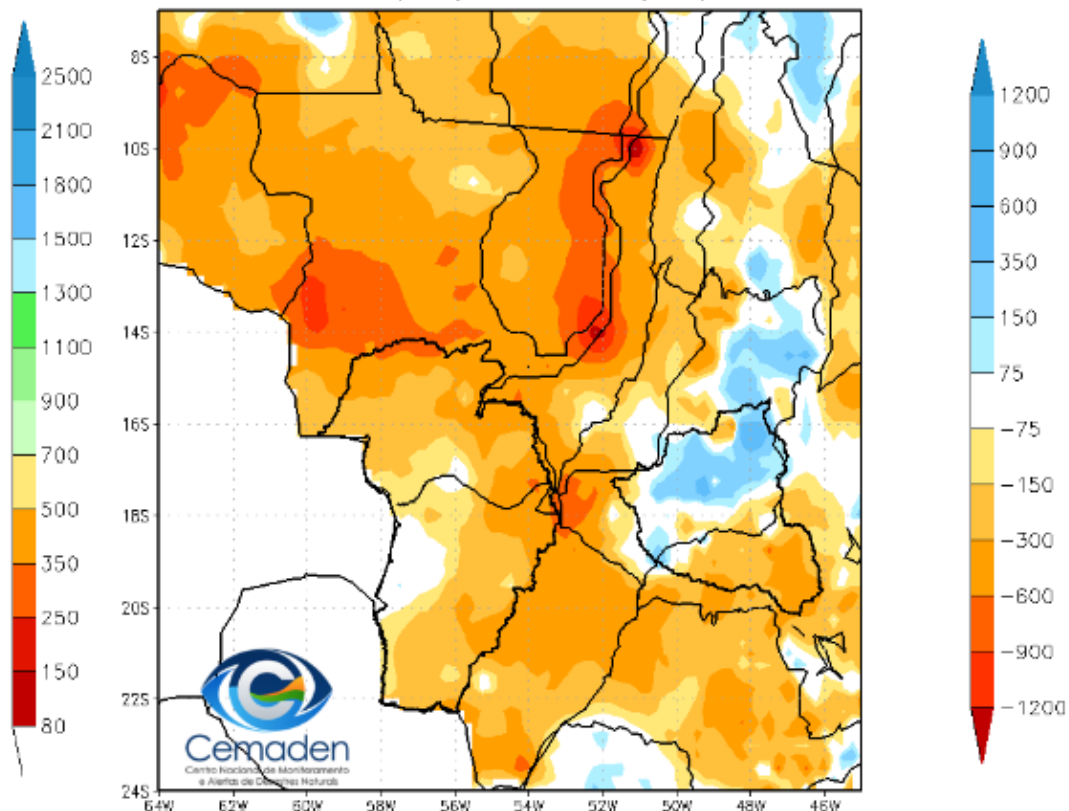


Precipitação no Ano Hidrológico

Precipitação Acumulada (mm) A.S.
Período: 01/10/2023 a 06/05/2024

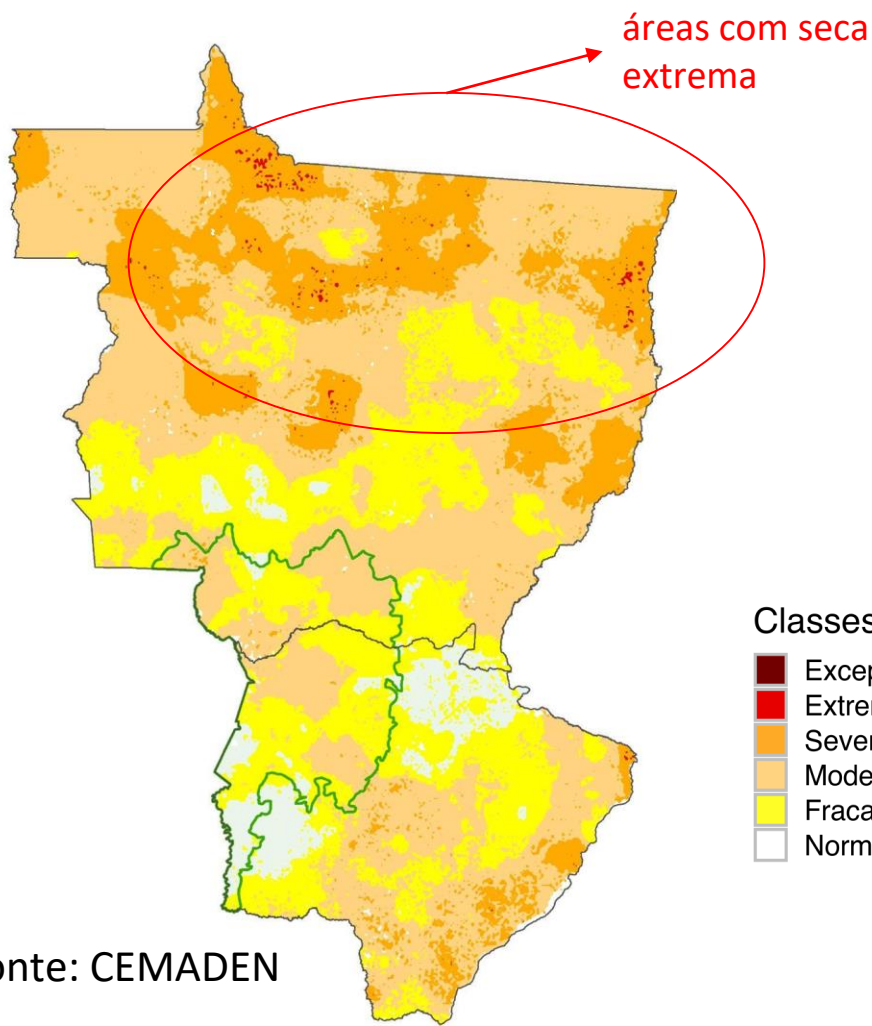


Anomalia de Precipitação (mm) A.S.
Período: 01/10/2023 a 06/05/2024

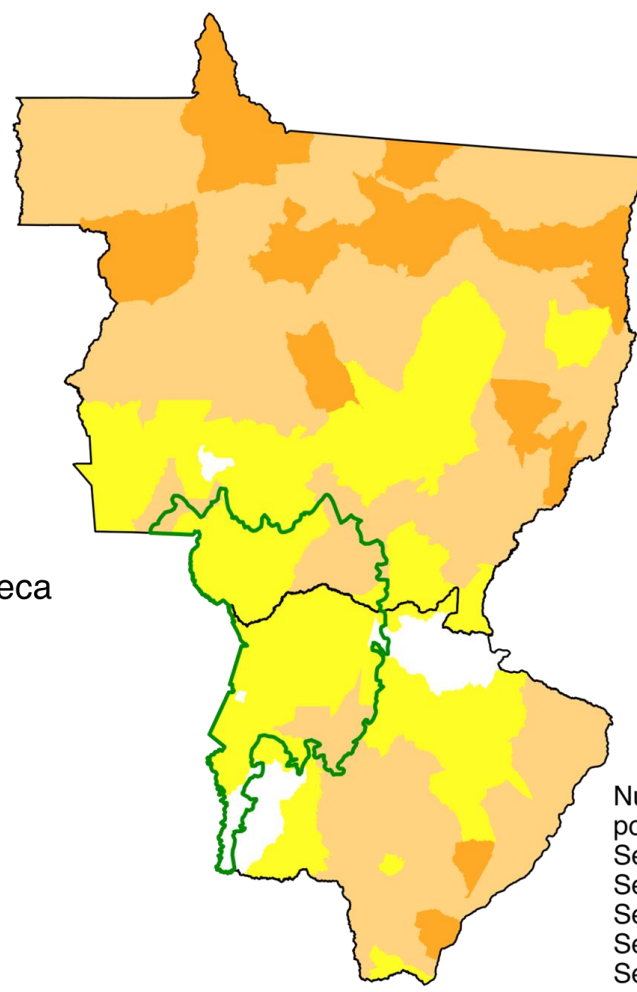


ÍNDICE INTEGRADO DE SECA - IIS6

IIS pontual



IIS por município



Classes de seca



Número de municípios por classes de seca

Seca excepcional	0
Seca extrema	0
Seca severa	30
Seca moderada	117
Seca fraca	63

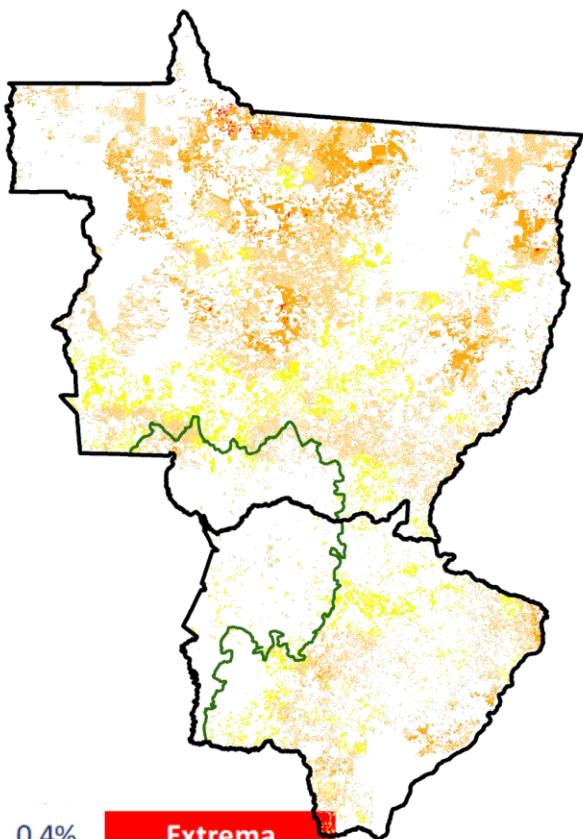


IMPACTOS DA SECA AGRÍCOLA

Imóveis Rurais

Terras Indígenas

Assentamentos Rurais



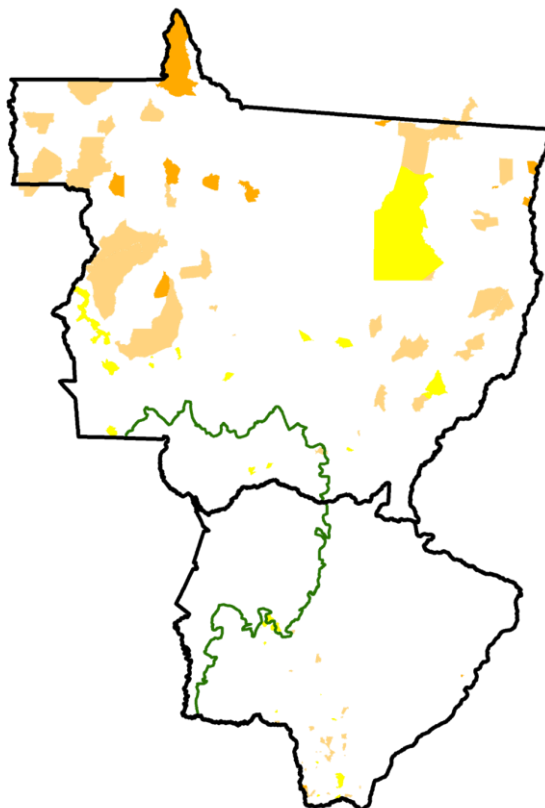
0,4%
21,9%
48,2%
24,0%

Extrema

Severa

Moderada

Fraca

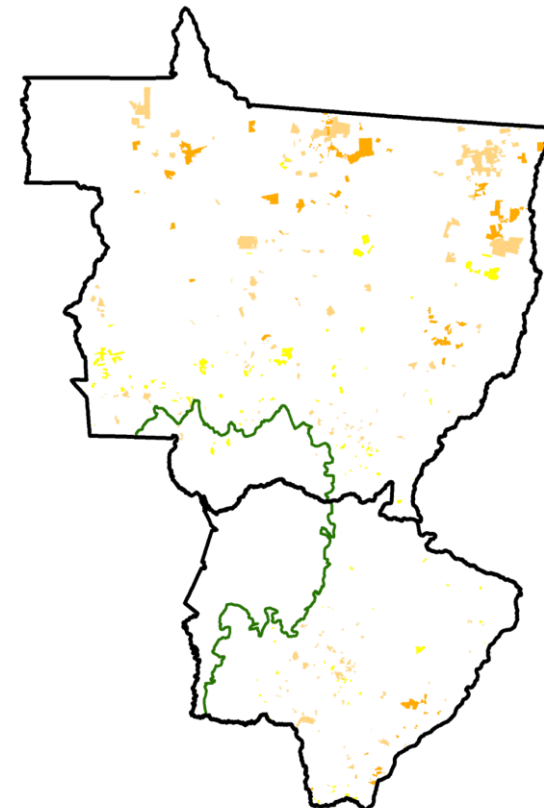


12,3%
55,3%
31,6%

Severa

Moderada

Fraca



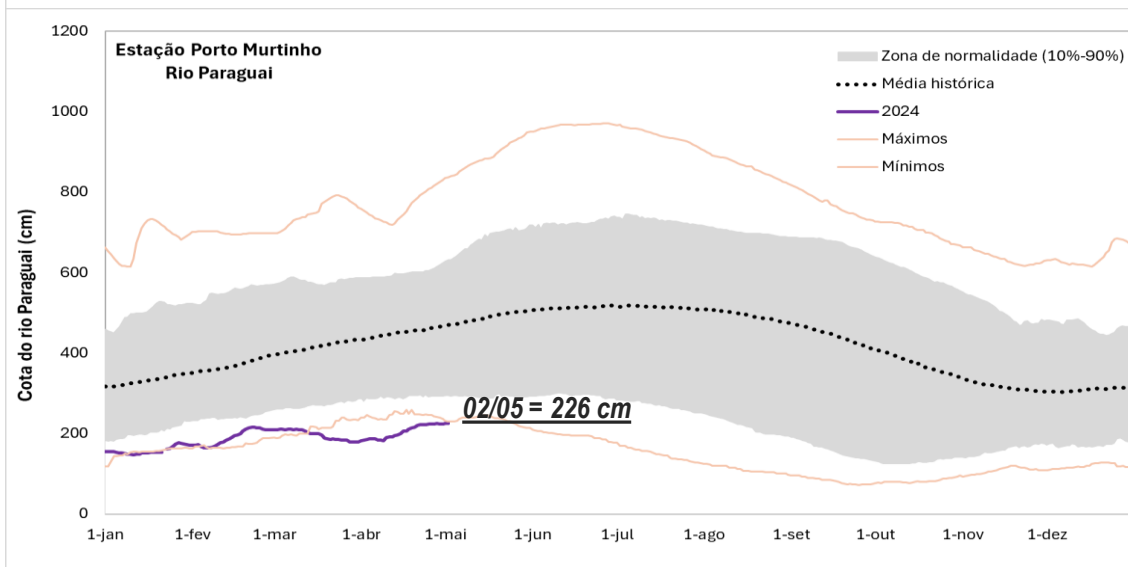
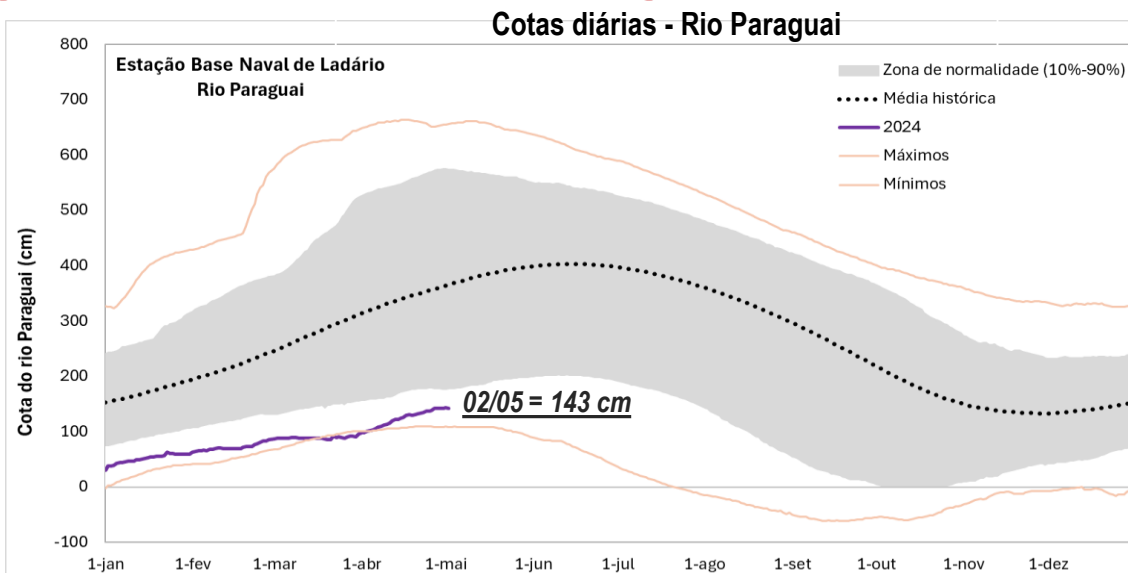
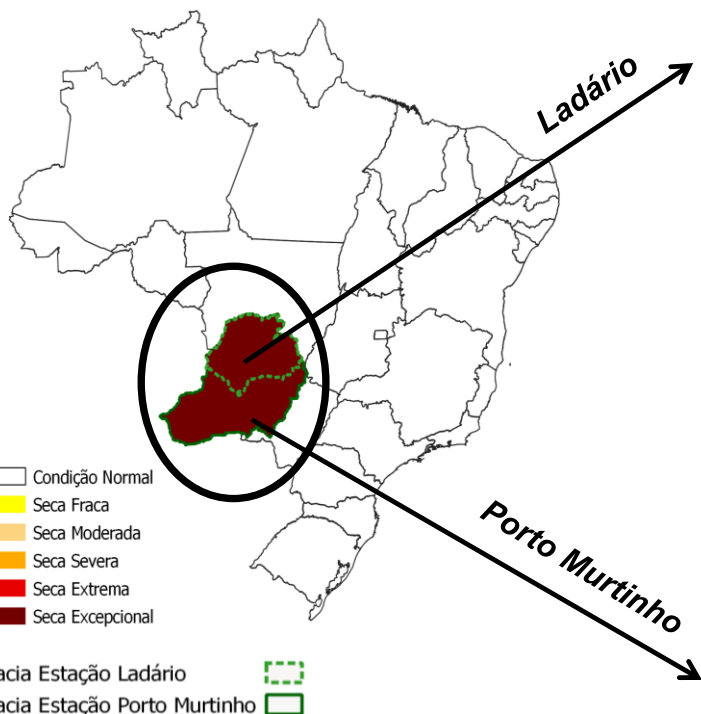
18,9%
48,2%
28,2%

Severa

Moderada

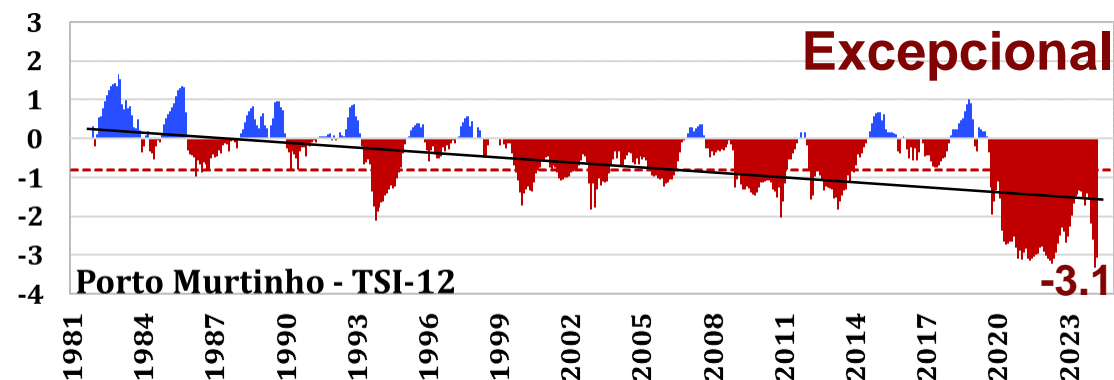
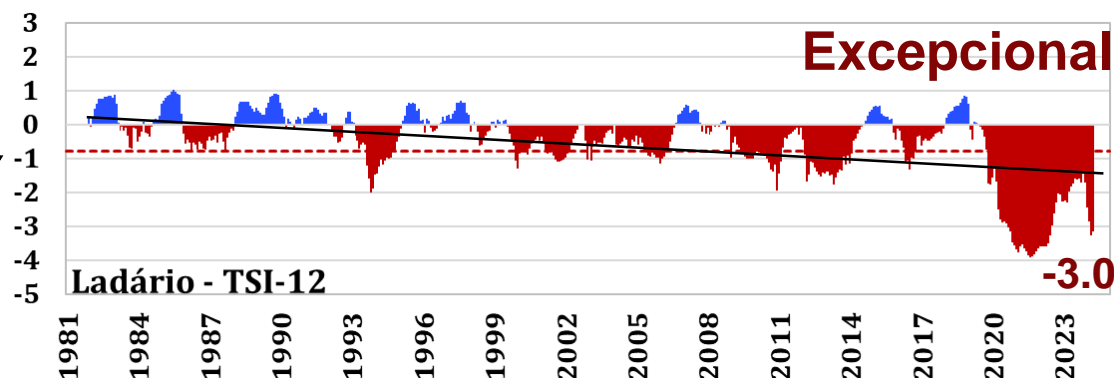
Fraca

Seca Hidrológica na bacia do Rio Paraguai



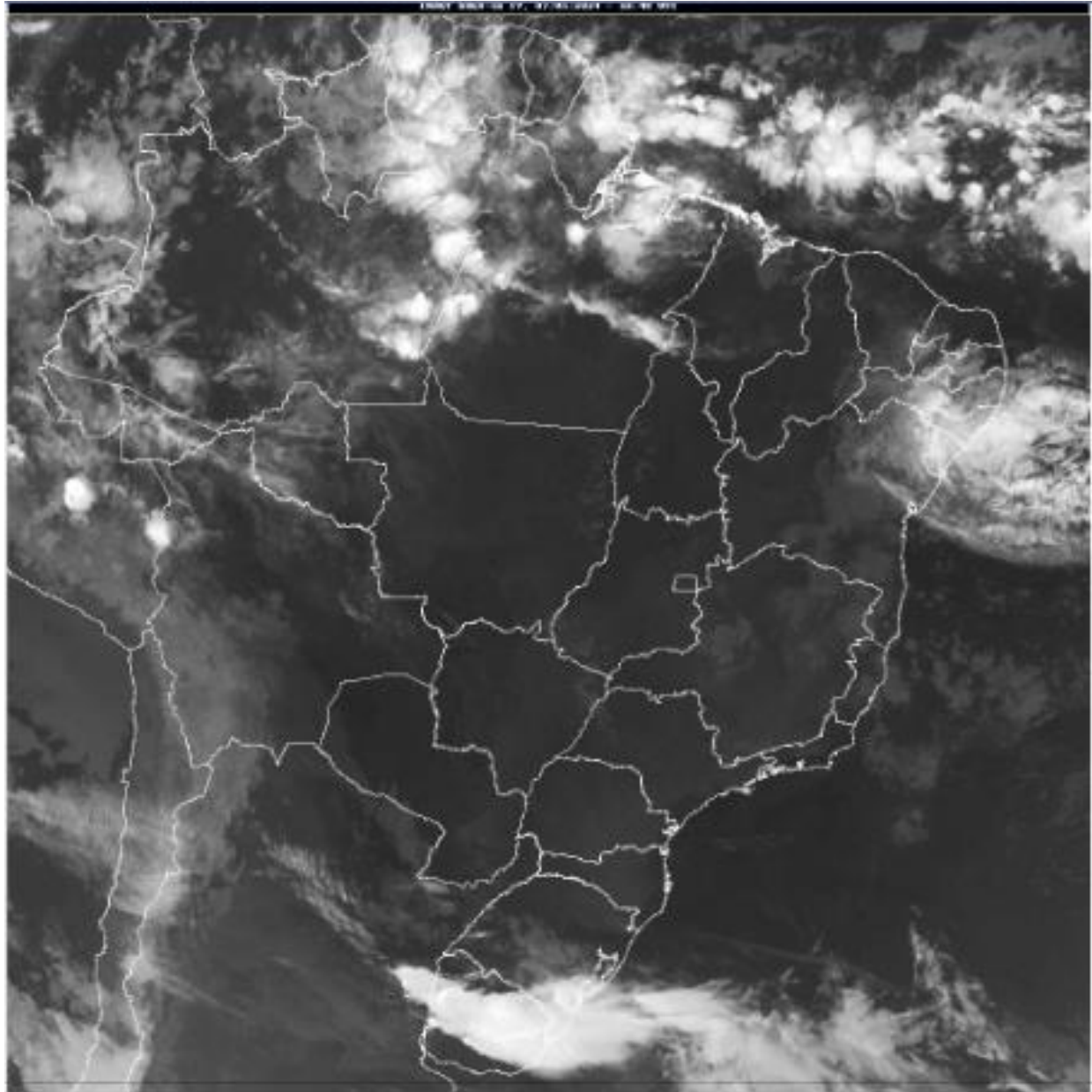
Estação	Cota média Março	Cota média Abril	MLT Abril
Ladário	89 cm	123 cm	340 cm
P. Murtinho	198 cm	204 cm	451 cm

Índice Padronizado Bivariado (Chuva-Cota) - TSI



Estação	TSI-Mar	TSI-Abr
Ladário	- 3.3	- 3.0
P. Murtinho	- 3.3	- 3.1

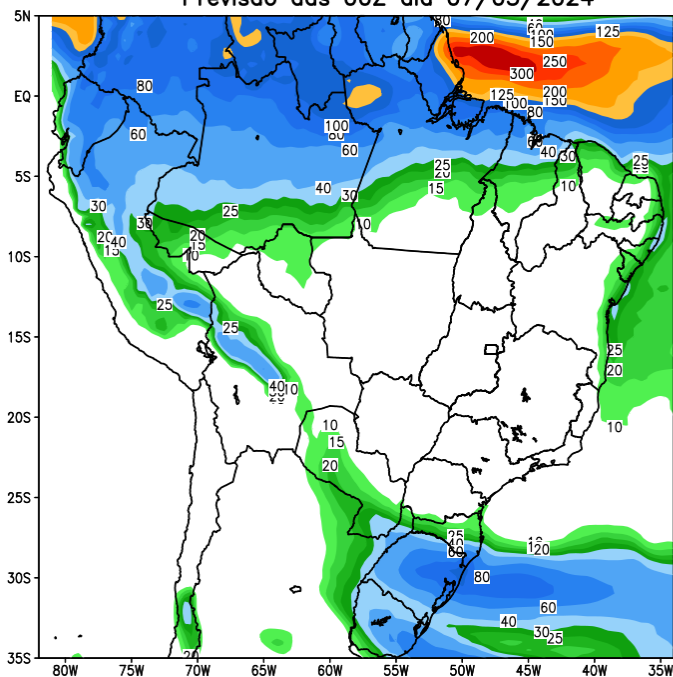
Situação meteorológica



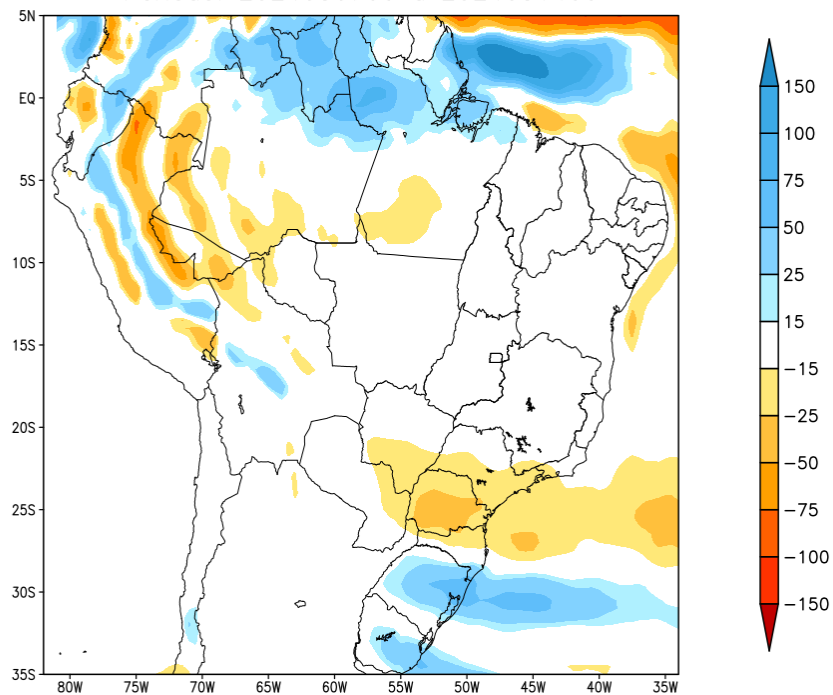


Previsão para as próxima semana

GEFS / BRASIL
Precipitação acumulada 1aSem (mm)
Previsão das 00Z dia 07/05/2024



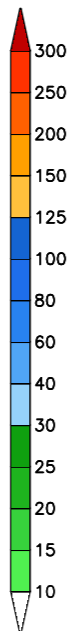
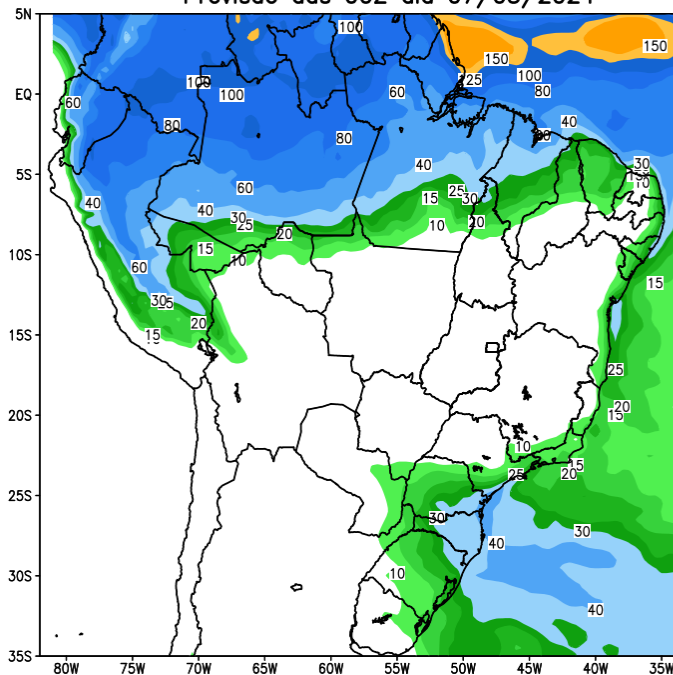
Anomalia de Precipitação BR (mm)
Período: 2024050700 a 2024051400



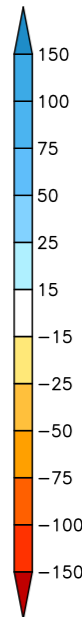
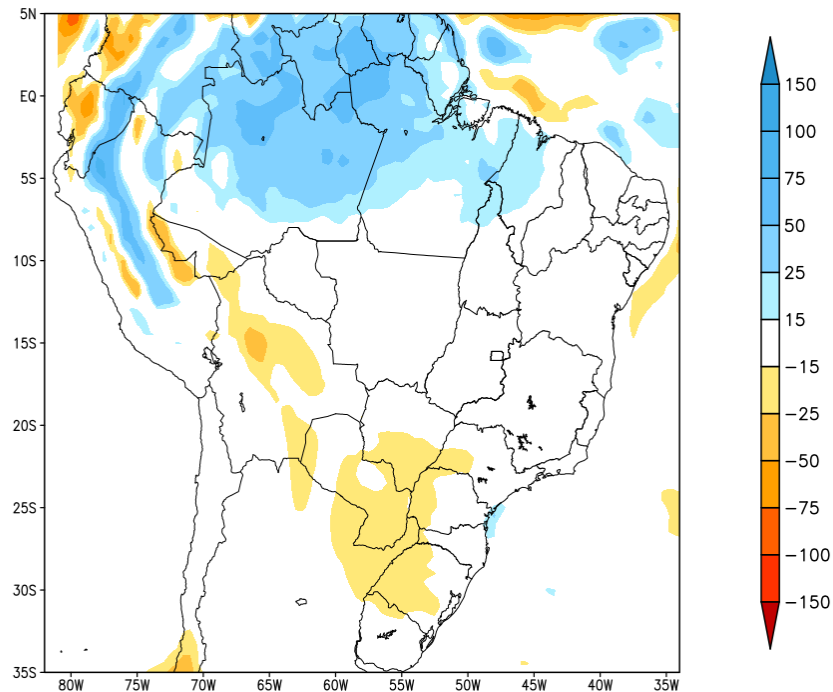


Tendência para a segunda semana

GEFS / BRASIL
Precipitação acumulada 2aSem (mm)
Previsão das 00Z dia 07/05/2024



Anomalia de Precipitação BR (mm)
Período: 2024051500 a 2024052100

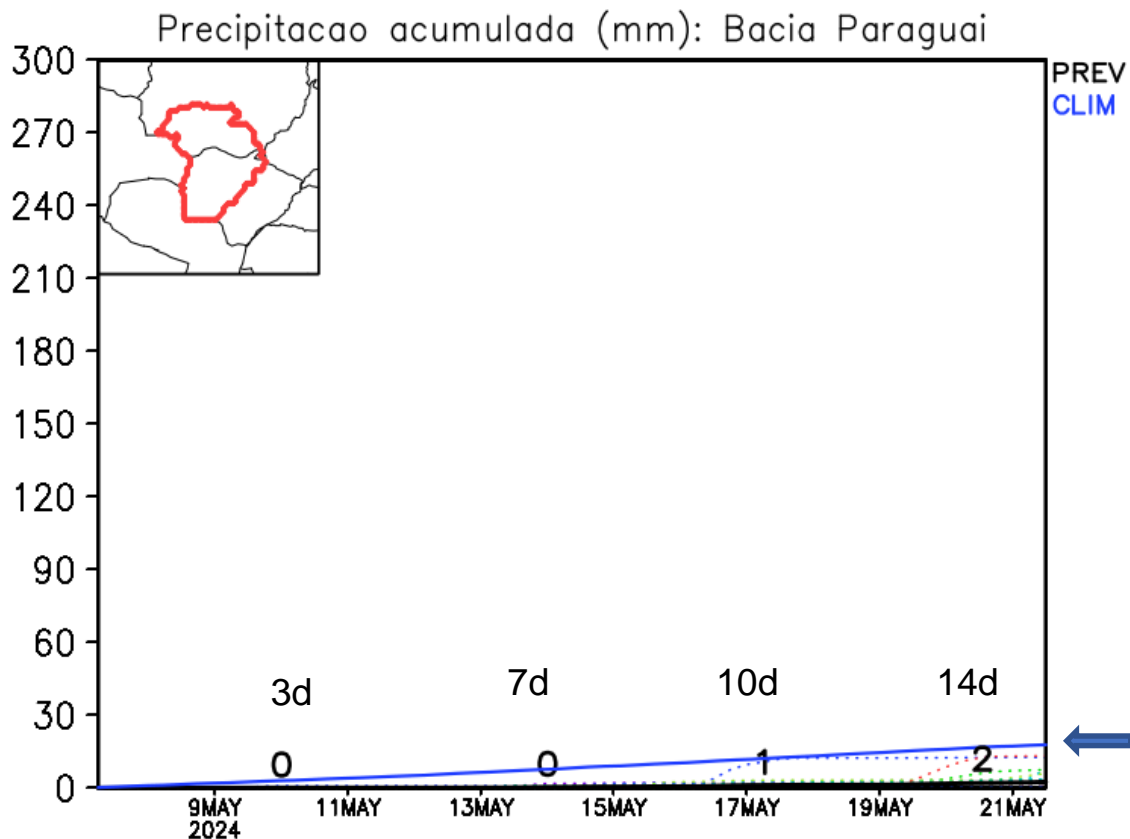
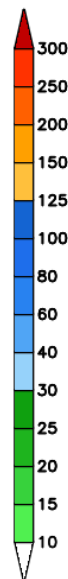
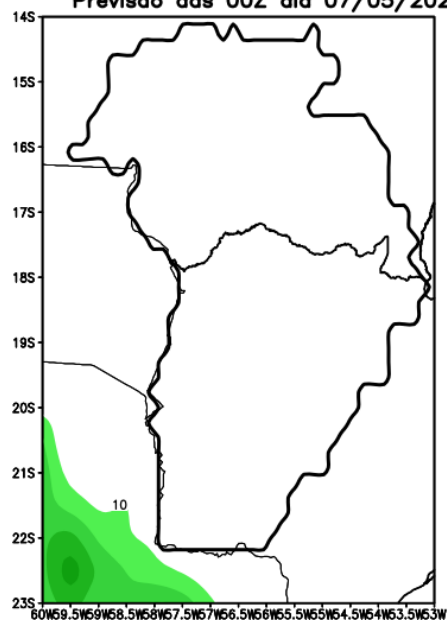




Previsão de chuva Bacia do Alto Paraguai

14 dias

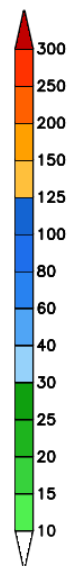
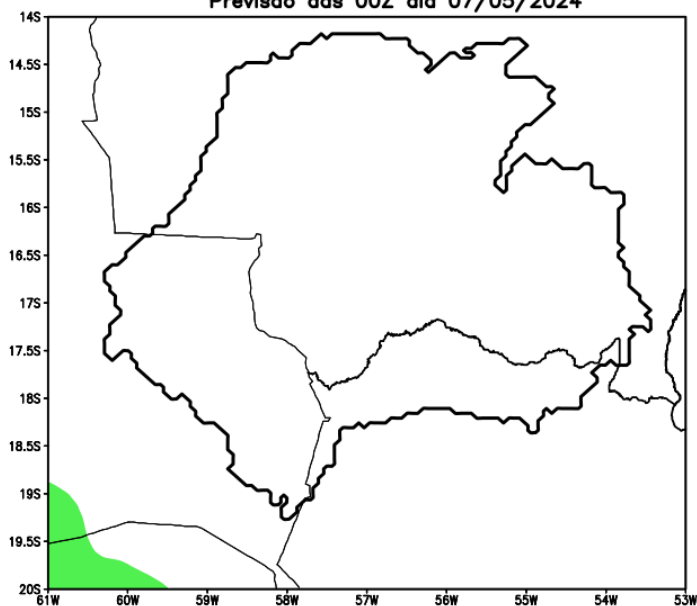
GEFS_BC / Bacia do Rio Paraguai
Prec. acumulada com correcao de vies em 14 dias (mm)
Previsao das 00Z dia 07/05/2024



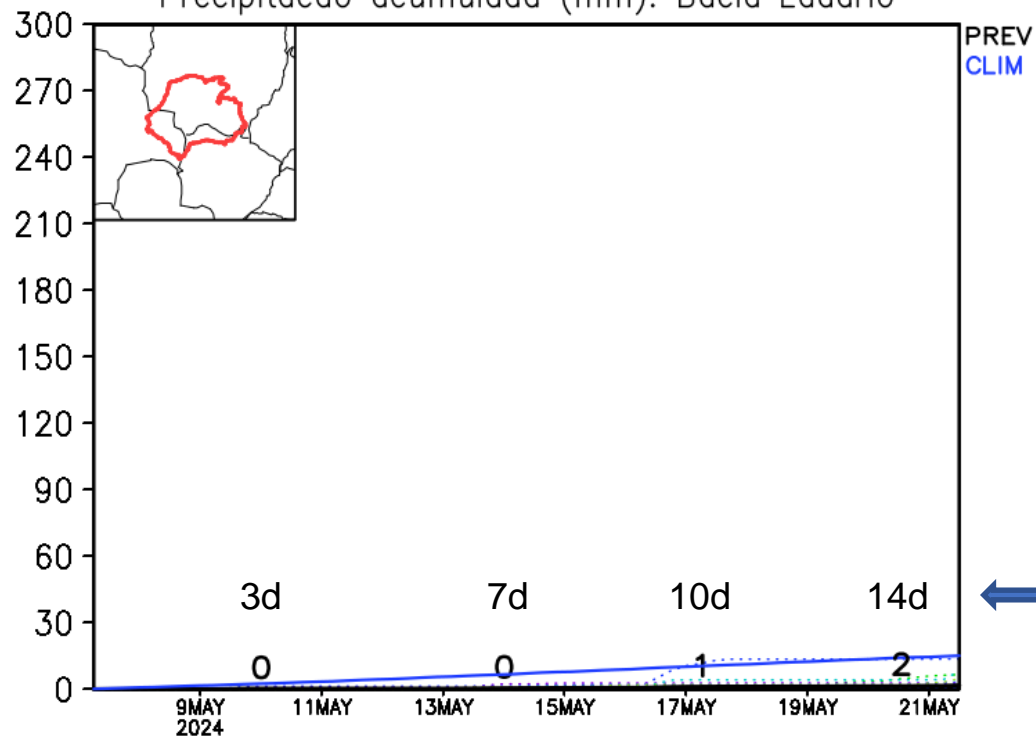


Previsão de chuva sub Bacia de Ladario

GEFS / Bacia Ladario
Precipitação acumulada em 14 dias (mm)
Previsão das 00Z dia 07/05/2024



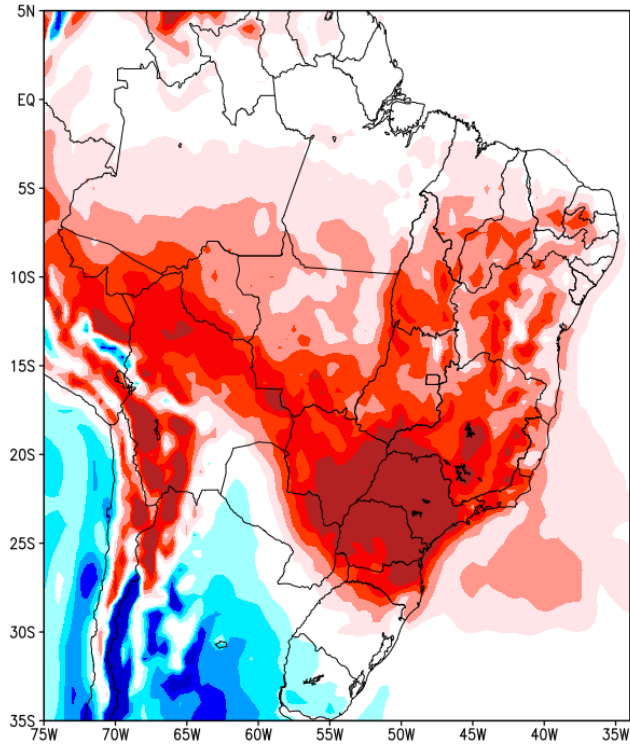
Precipitação acumulada (mm): Bacia Ladario



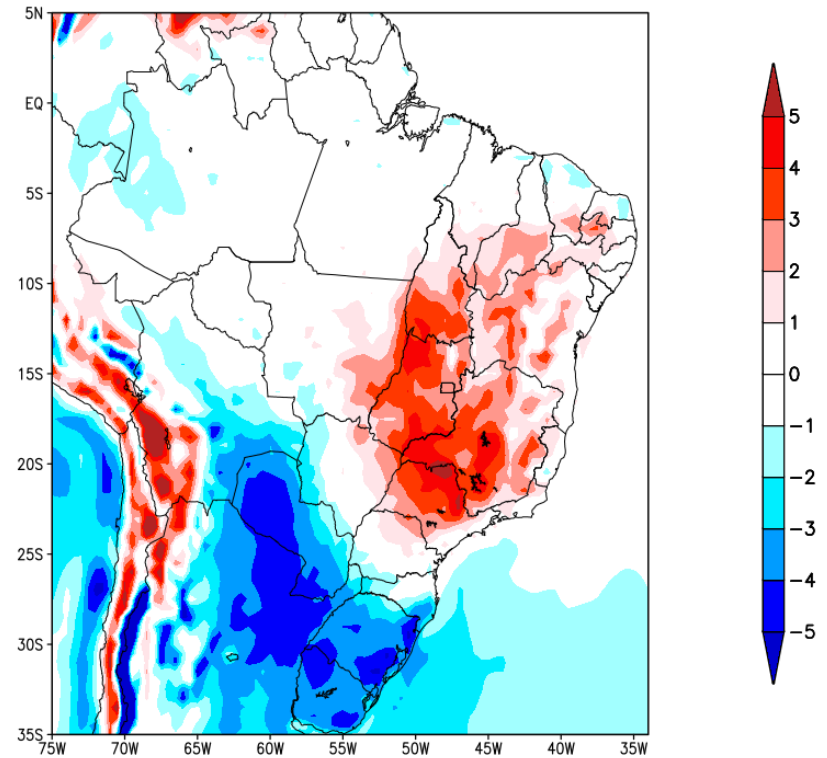


Previsão de Temperatura

Anomalia de Temperatura BR (C)
Período: 2024050700 a 2024051400



Anomalia de Temperatura BR (C)
Período: 2024051500 a 2024052100

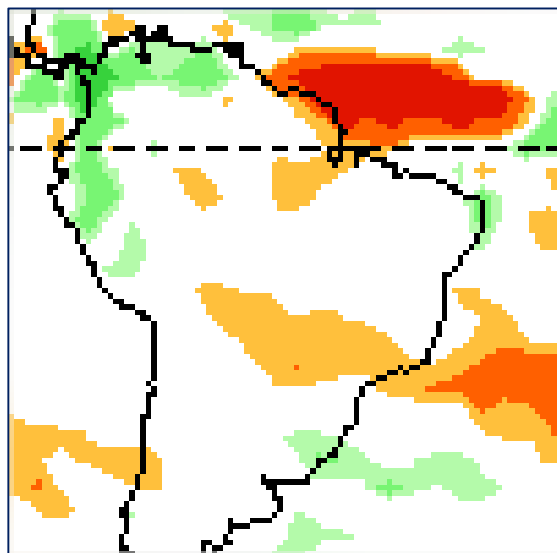


Modelo GFS/NOAA

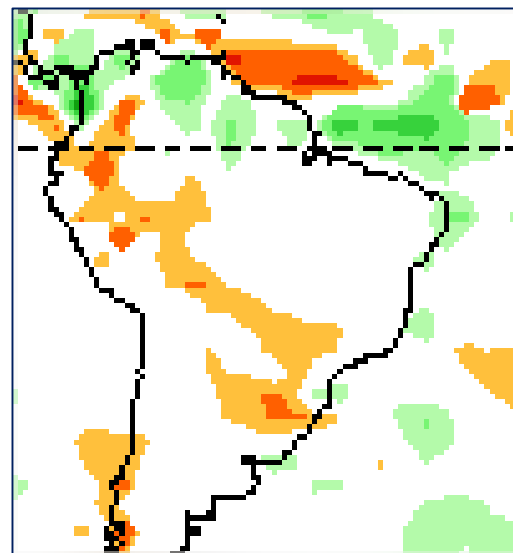


Tendência 3a e 4a semanas

20-26 MAIO



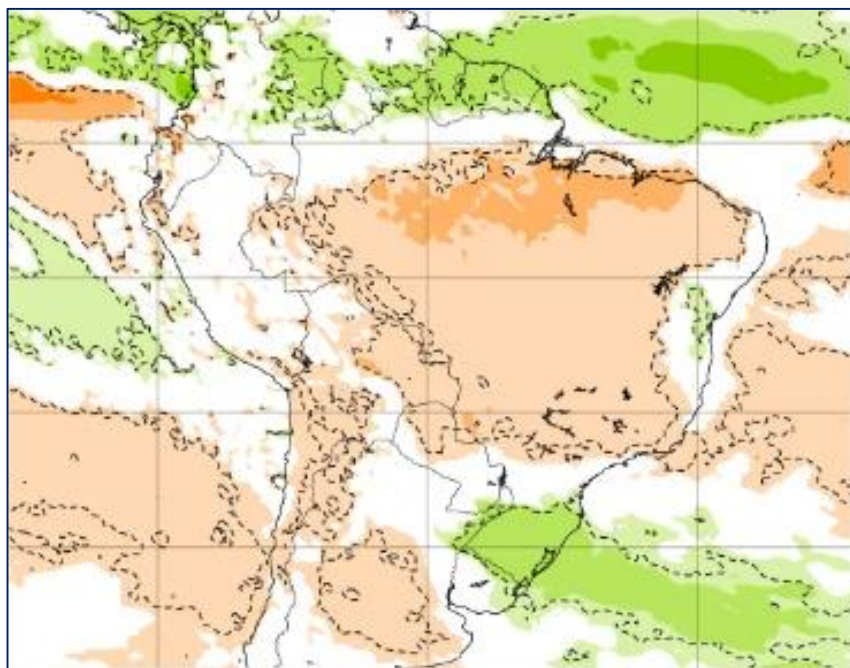
27 MAIO- 02 JUNHO



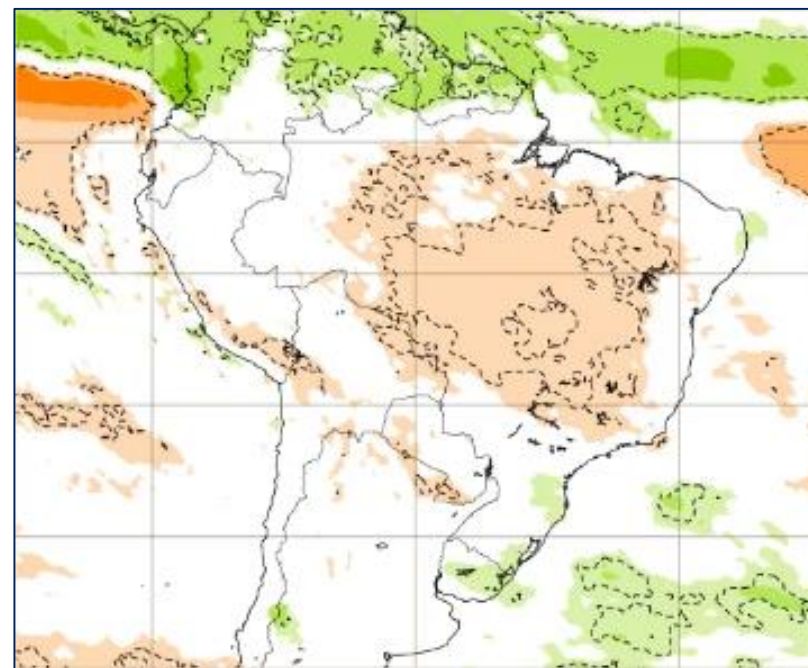


Tendência para 3^a e 4^a semanas

20-27 maio

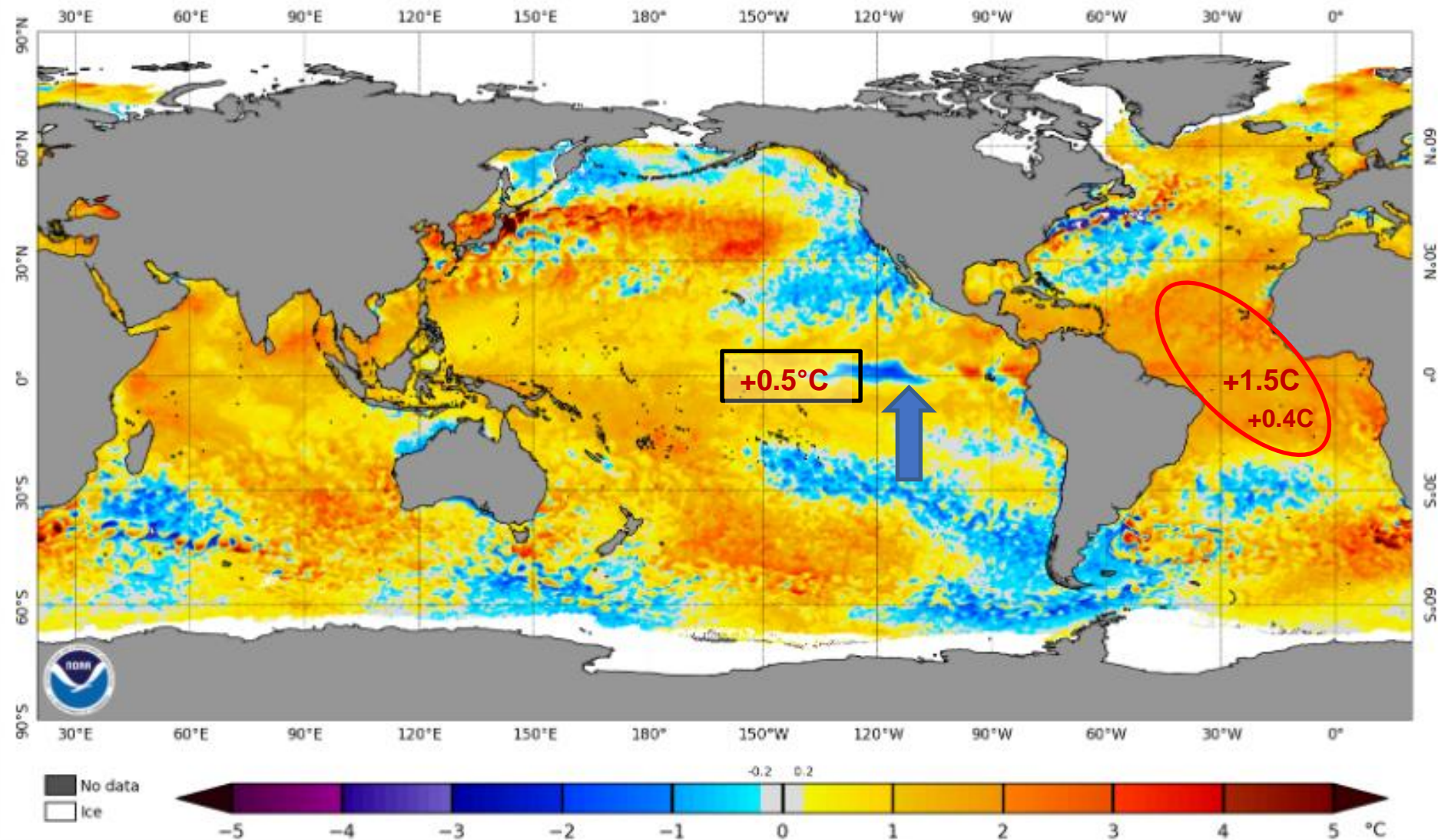


27 maio- 03 junho



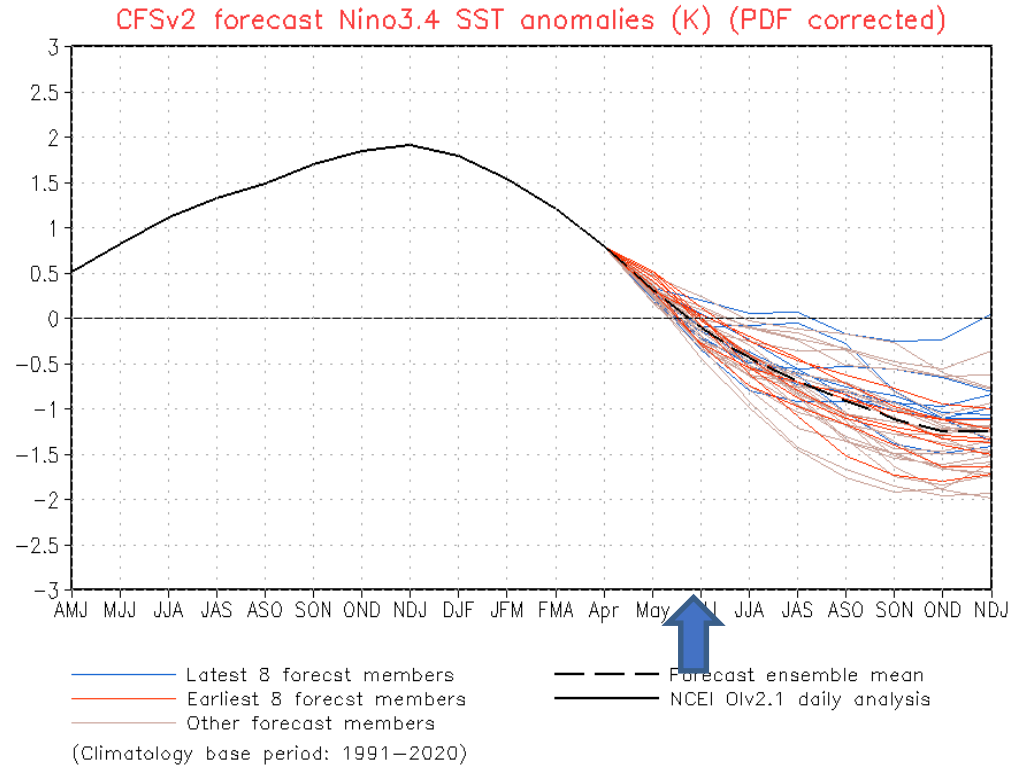
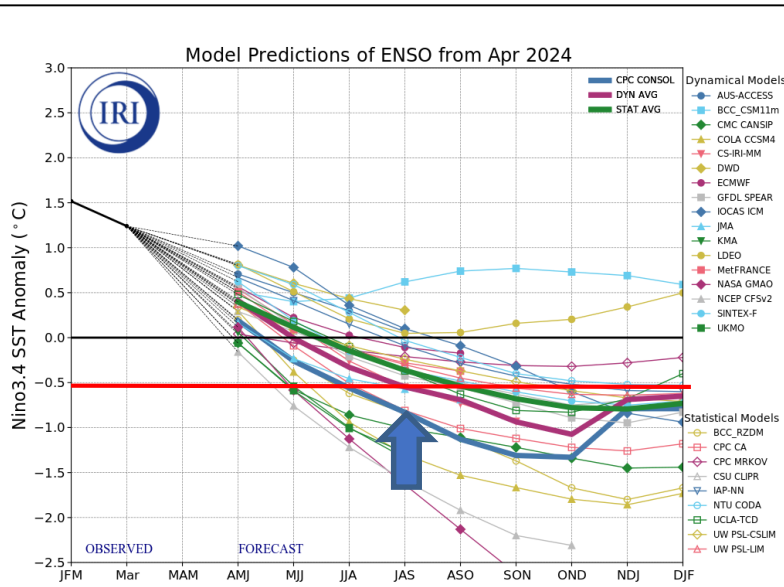
Status Atual: **El Niño**/ La Niña Watch

NOAA Coral Reef Watch Daily 5km SST Anomalies (v3.1) 4 May 2024





Previsão do “ENSO”



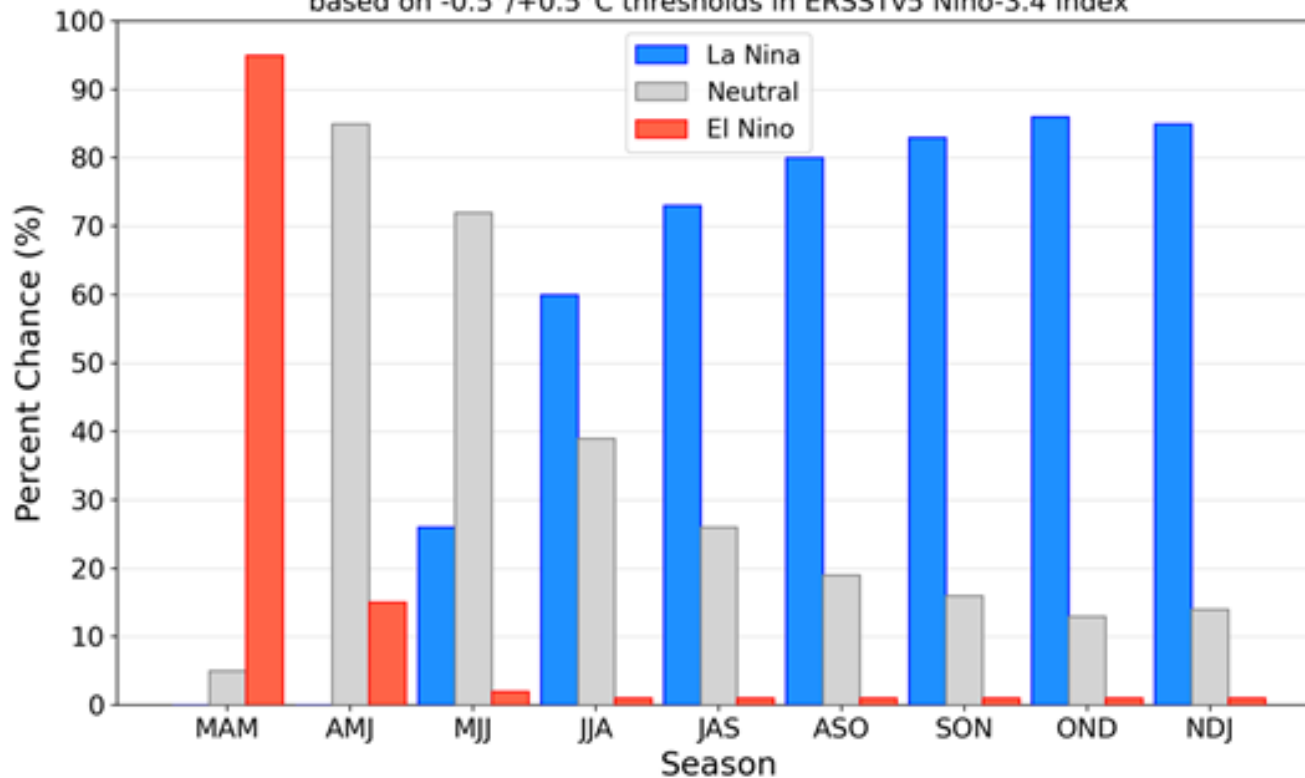
Atualizado 06 de maio



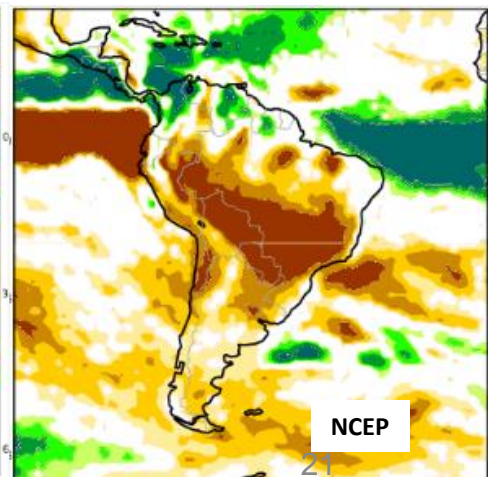
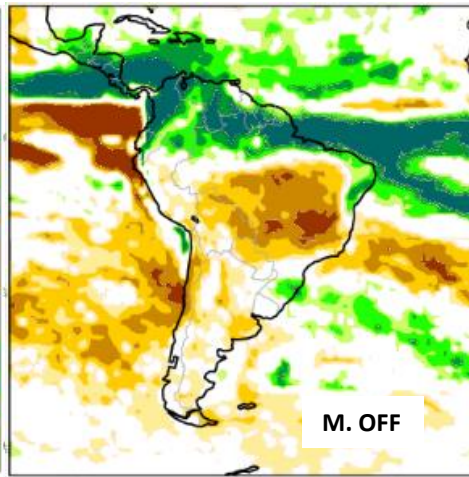
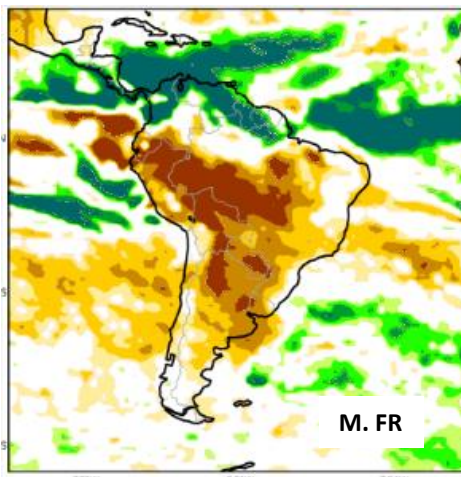
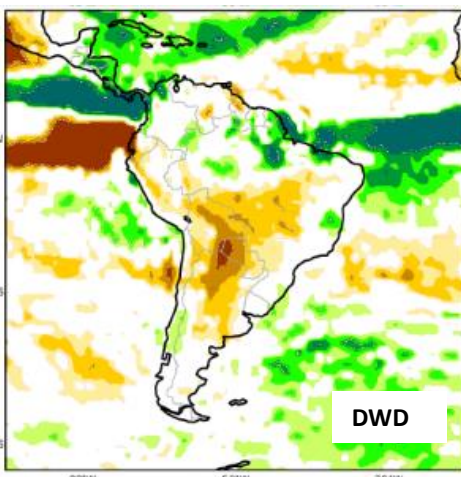
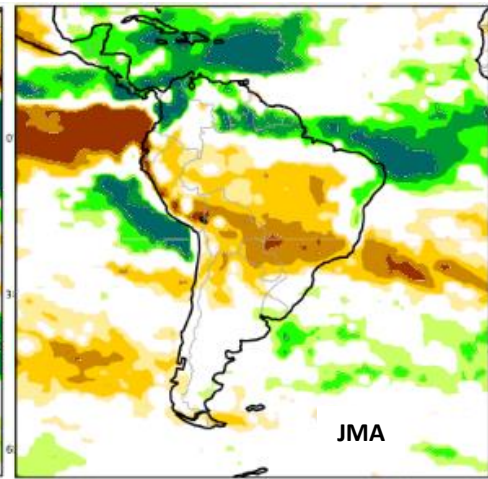
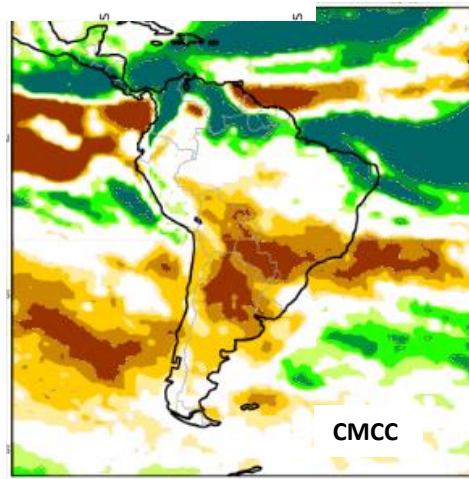
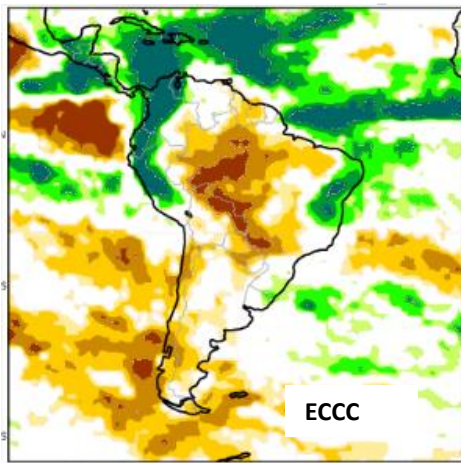
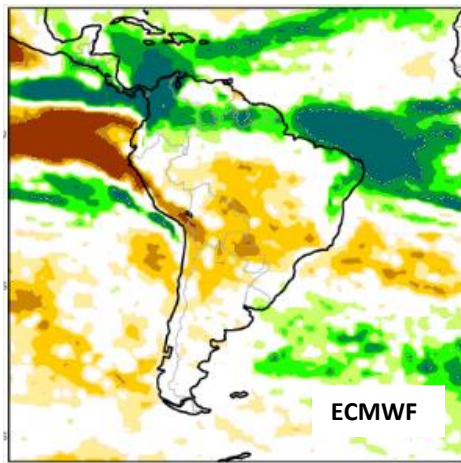
Previsão do “ENSO”

Official NOAA CPC ENSO Probabilities (issued Apr. 2024)

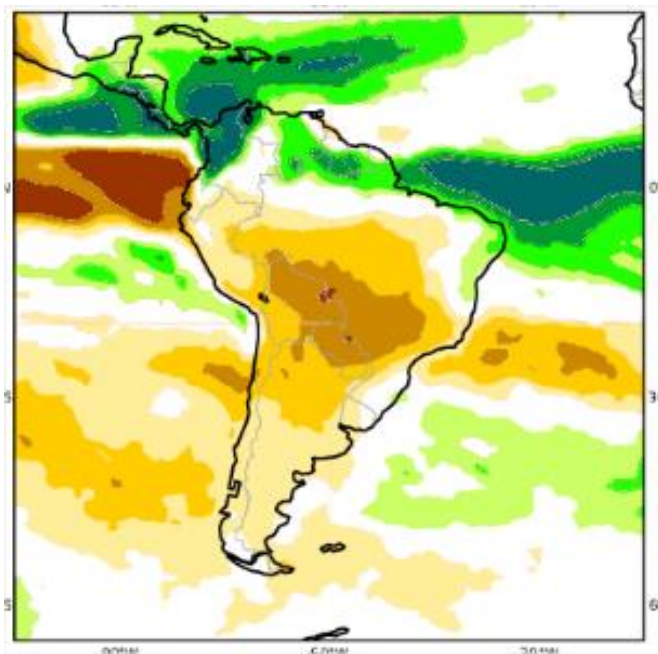
based on $-0.5^{\circ}/+0.5^{\circ}\text{C}$ thresholds in ERSSTv5 Niño-3.4 index



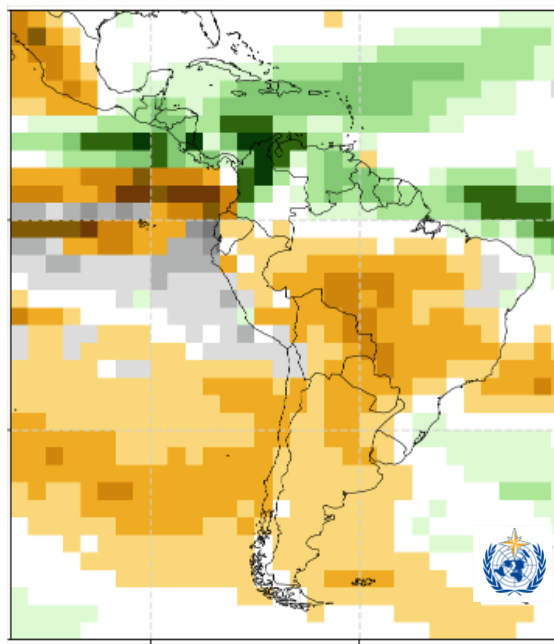
Previsão Sazonal de Chuva MJJ



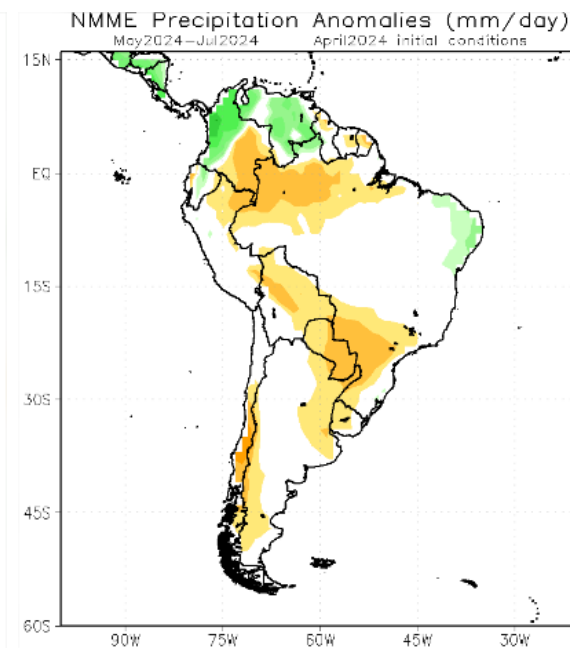
Previsão Sazonal de Chuva Multi-Modelo para MJJ



Previsão Multi-modelo
União Europeia



Modelos da Organização
Meteorológica Mundial

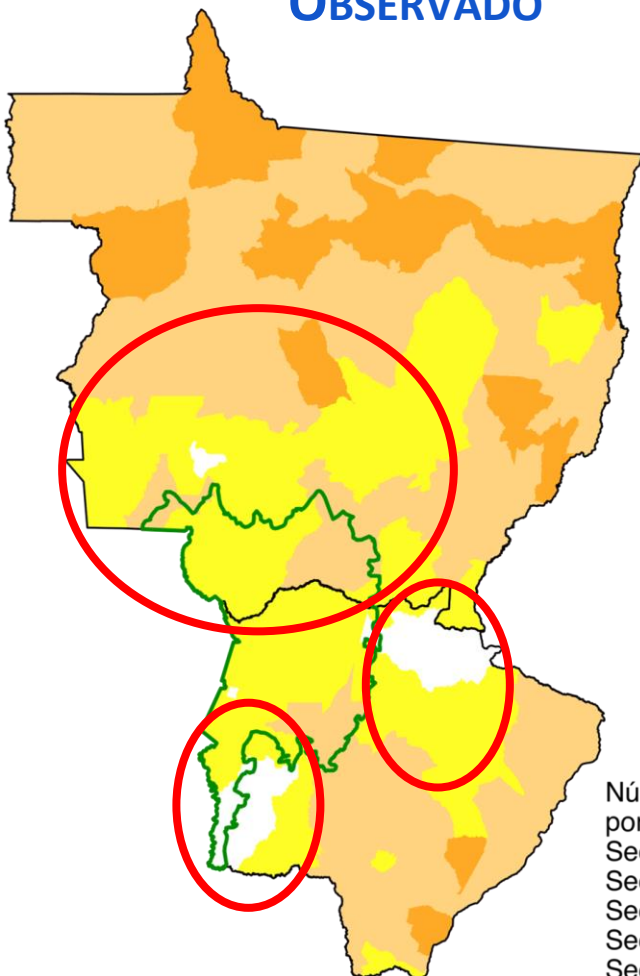


Modelos Americanos



ÍNDICE INTEGRADO DE SECA - IIS6

OBSERVADO

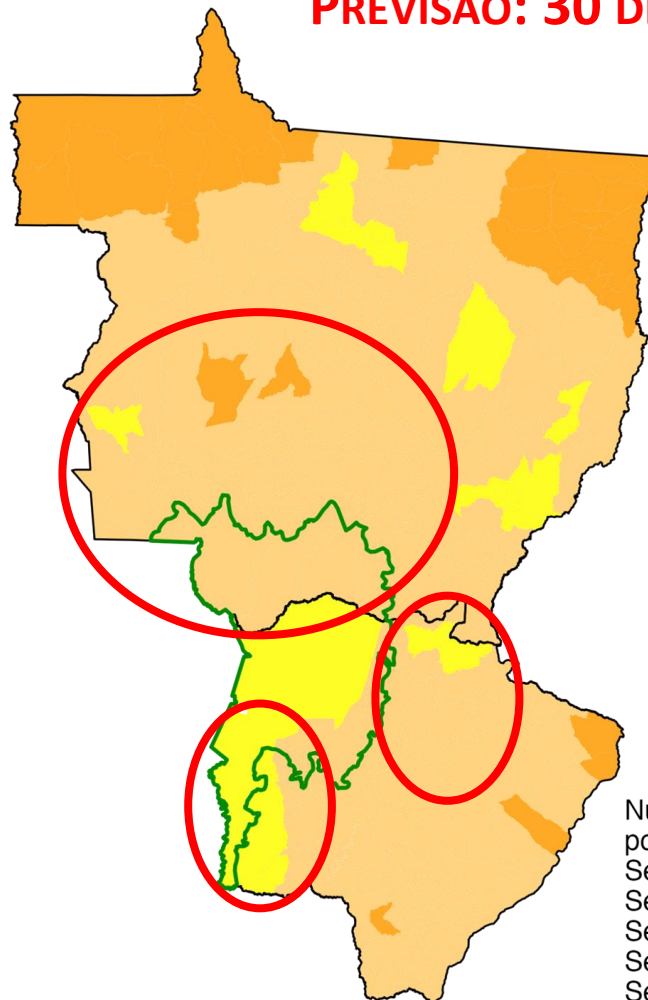


Classes de seca



Número de municípios por classes de seca	
Seca excepcional	0
Seca extrema	0
Seca severa	30
Seca moderada	117
Seca fraca	63

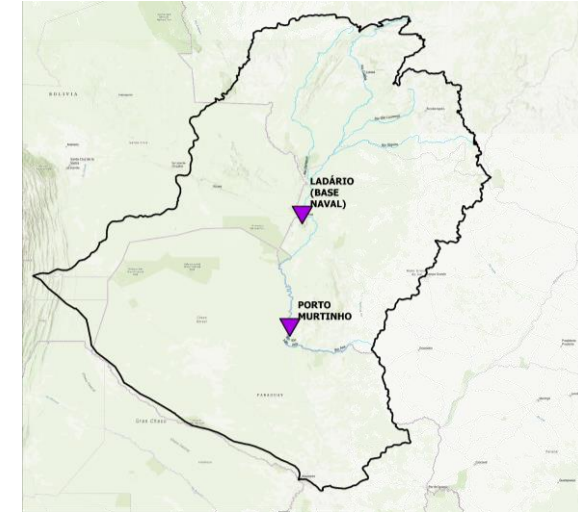
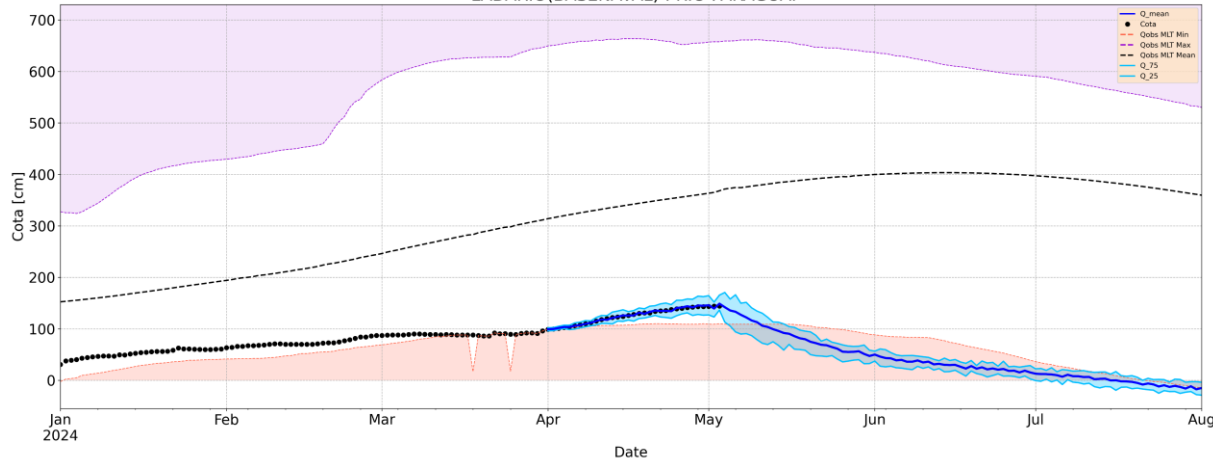
PREVISÃO: 30 DIAS



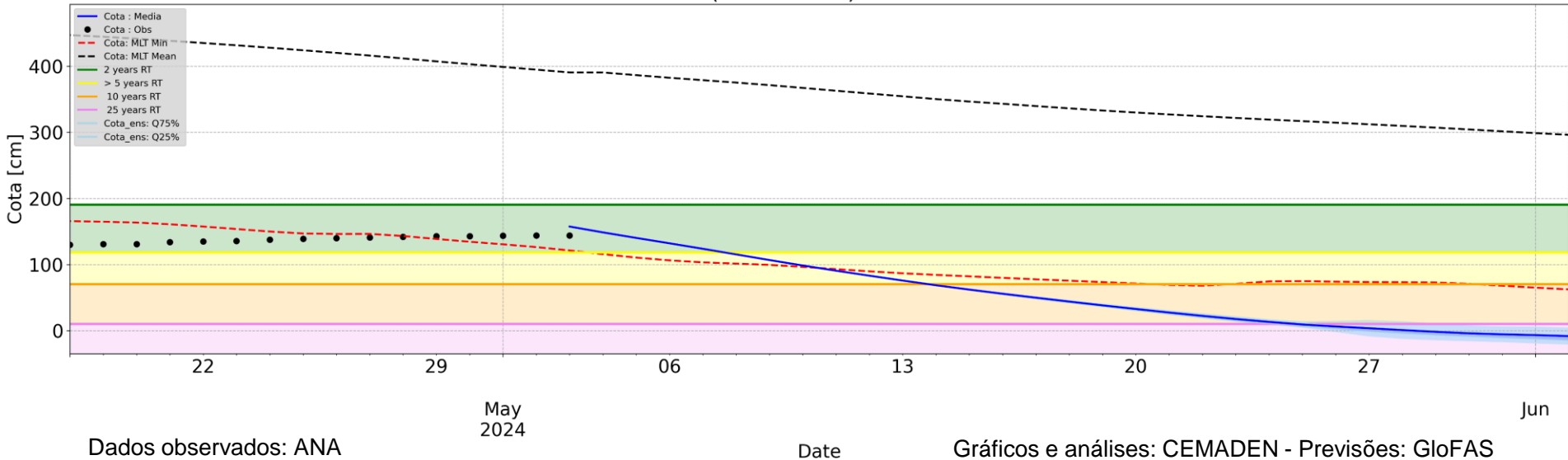
Número de municípios por classes de seca	
Seca excepcional	0
Seca extrema	0
Seca severa	29
Seca moderada	175
Seca fraca	15



Previsão Sazonal :2024-04
LADARIO(BASENAVAL) : RIO PARAGUAI

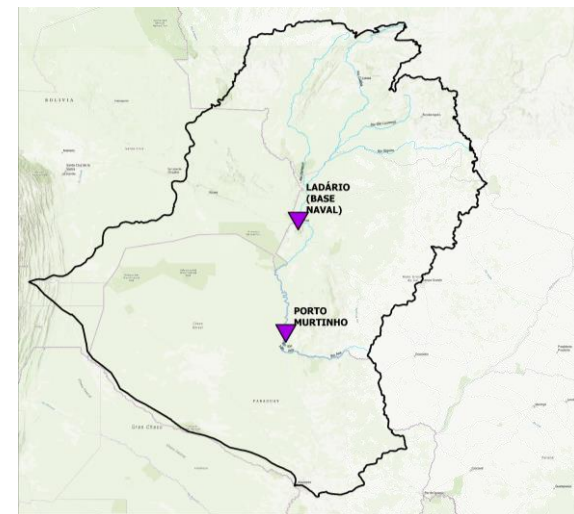
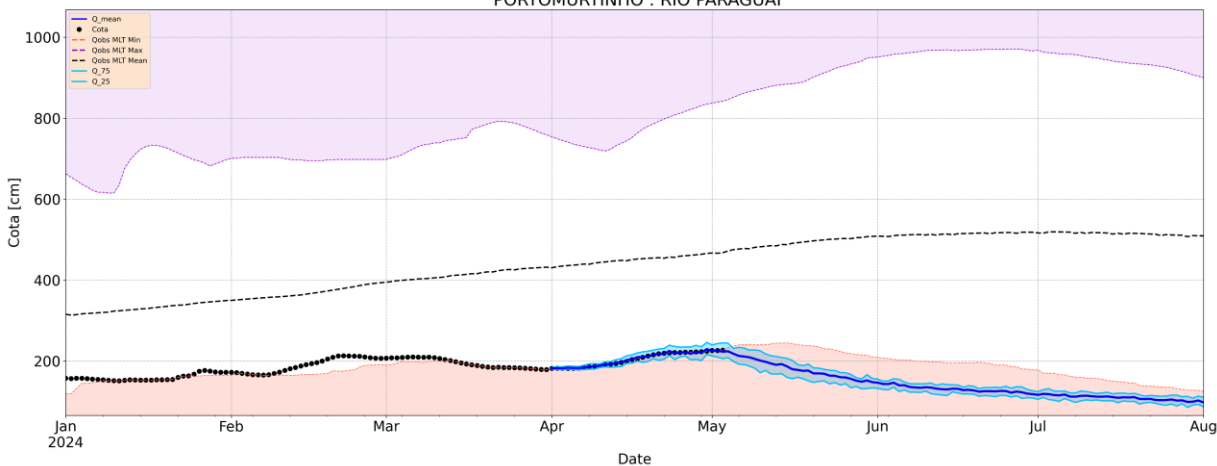


Model Run - 2024-05-03
LADARIO(BASENAVAL) : RIO PARAGUAI

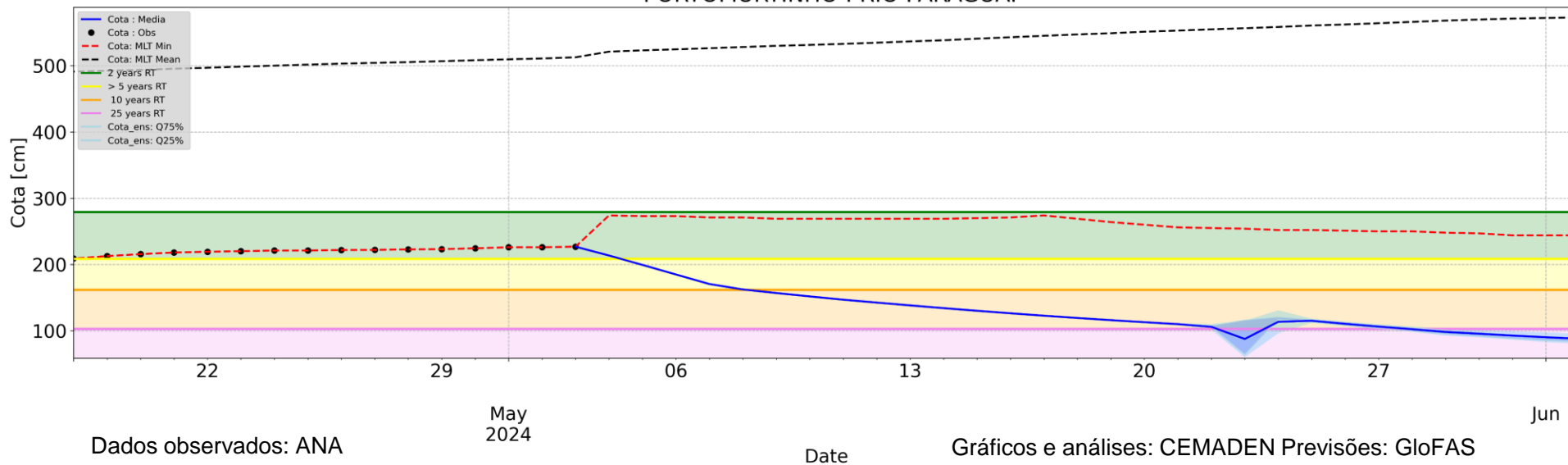




Previsão Sazonal :2024-04
PORTOMURTINHO : RIO PARAGUAI

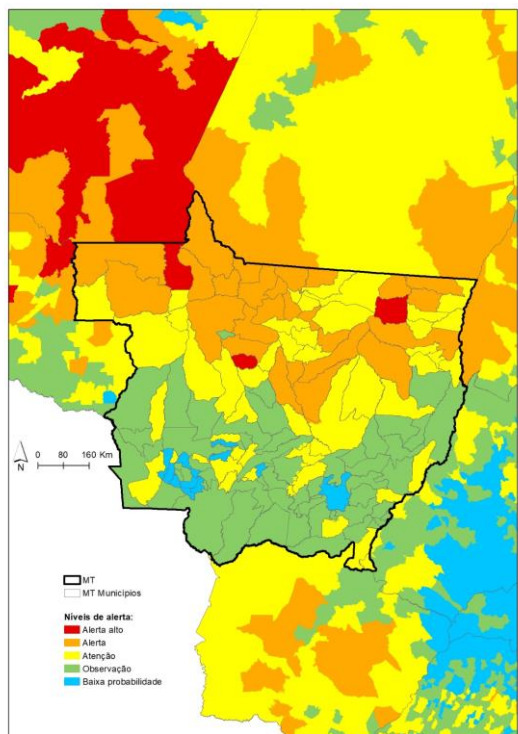


Model Run - 2024-05-03
PORTOMURTINHO : RIO PARAGUAI

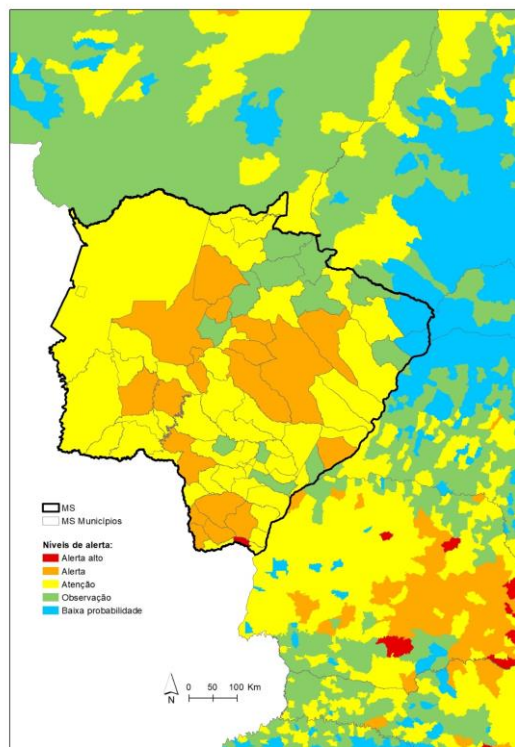




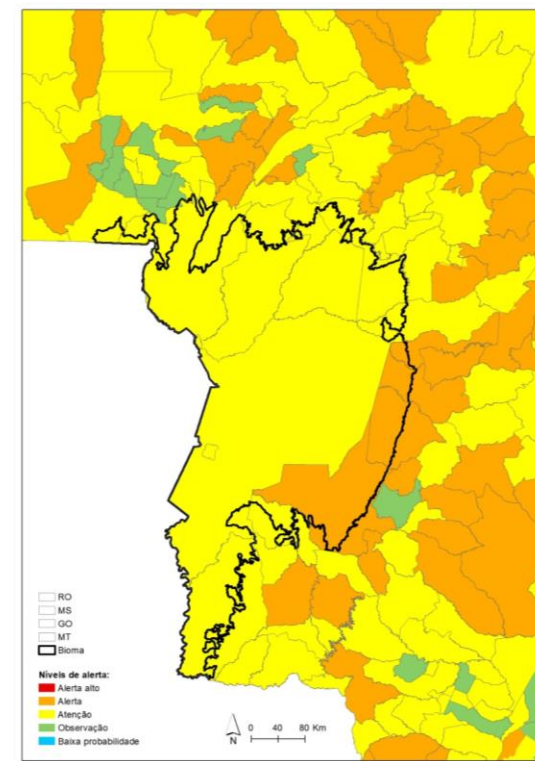
Previsão de probabilidade de fogo - Maio-Jun-Jul 2024



Nível de Alerta	Número de municípios	Área (km²)
Alerta alto	3	19,845
Alerta	54	391,147
Atenção	72	478,740
Observação	12	13,475
Baixa probabilidade	0	-



Nível de Alerta	Número de municípios	Área (km²)
Alerta alto	1	417
Alerta	23	121,917
Atenção	50	226,244
Observação	5	8,571
Baixa probabilidade	0	-



Nível de Alerta	Número de municípios	Área (km²)
Alerta alto	0	-
Alerta	4	35,838
Atenção	12	168,947
Observação	0	-
Baixa probabilidade	0	-