

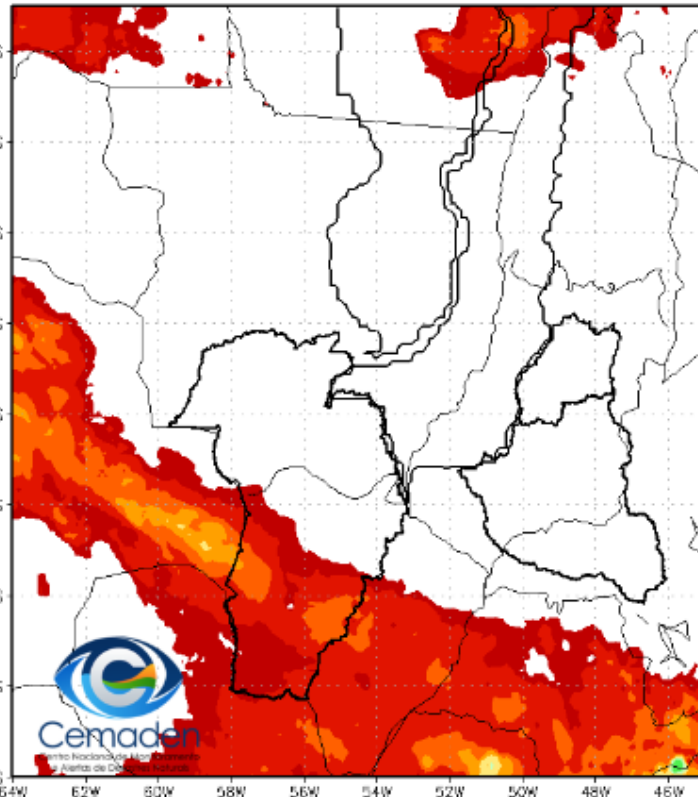


Monitoramento, previsões e impactos da situação de seca no Alto Paraguai

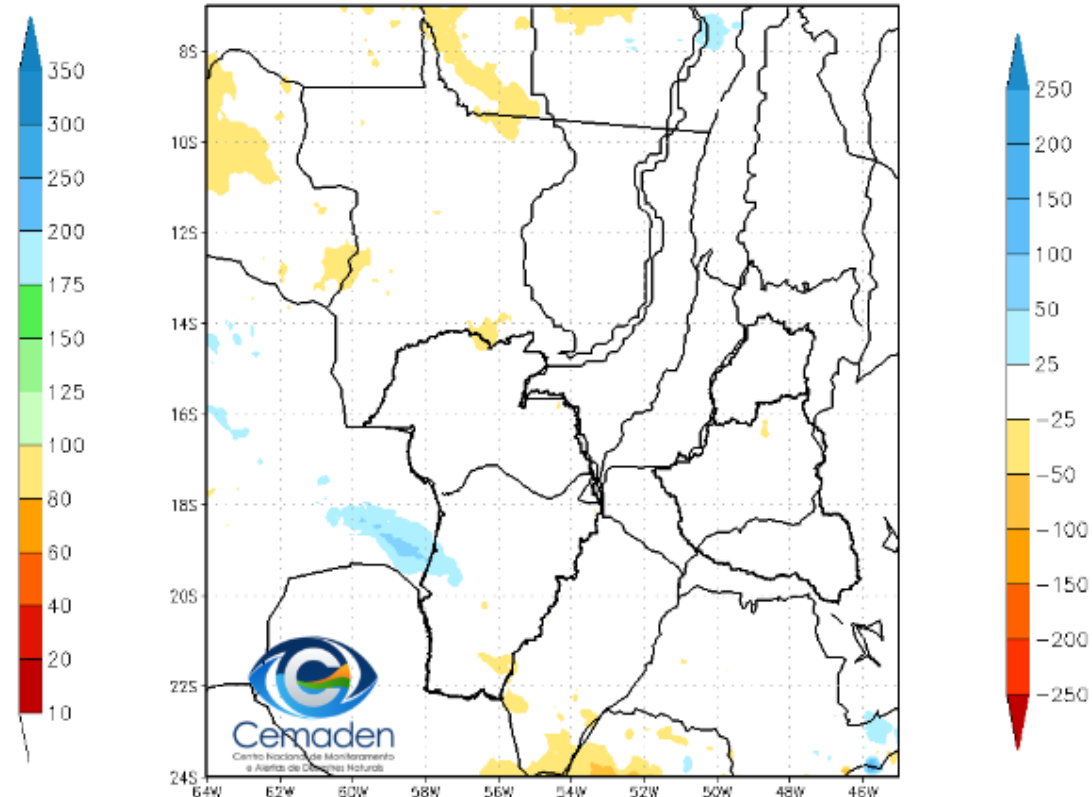
São José dos Campos, 06 Setembro de 2024

Precipitação nos últimos 30 dias

Precipitação Acumulada (mm) A.S.
Período: 05/08/2024 a 04/09/2024

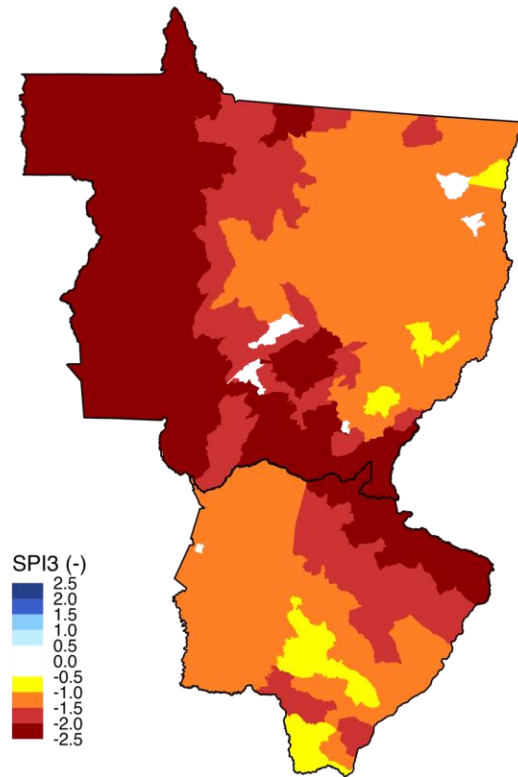


Anomalia de Precipitação (mm) A.S.
Período: 05/08/2024 a 04/09/2024



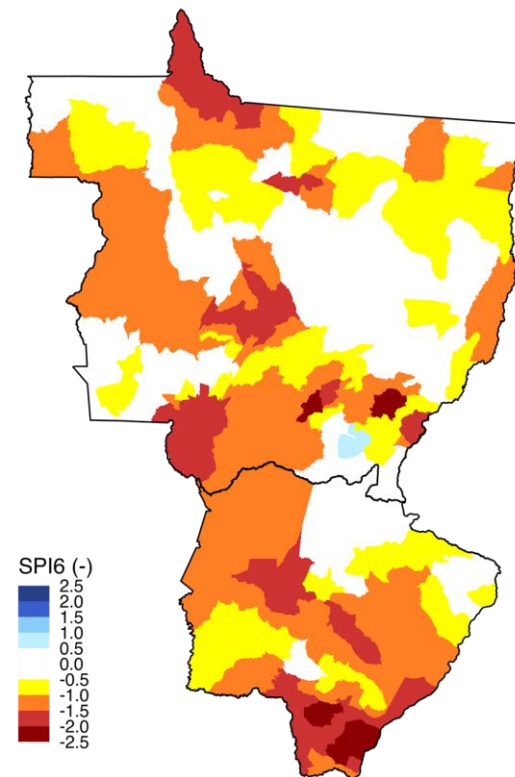
SPI: AGOSTO 2024

SPI-03



Agosto 2024
Índice Padronizado de Precipitação (SPI, 3 meses)
Fonte: Cemaden/MCTI.

SPI-06



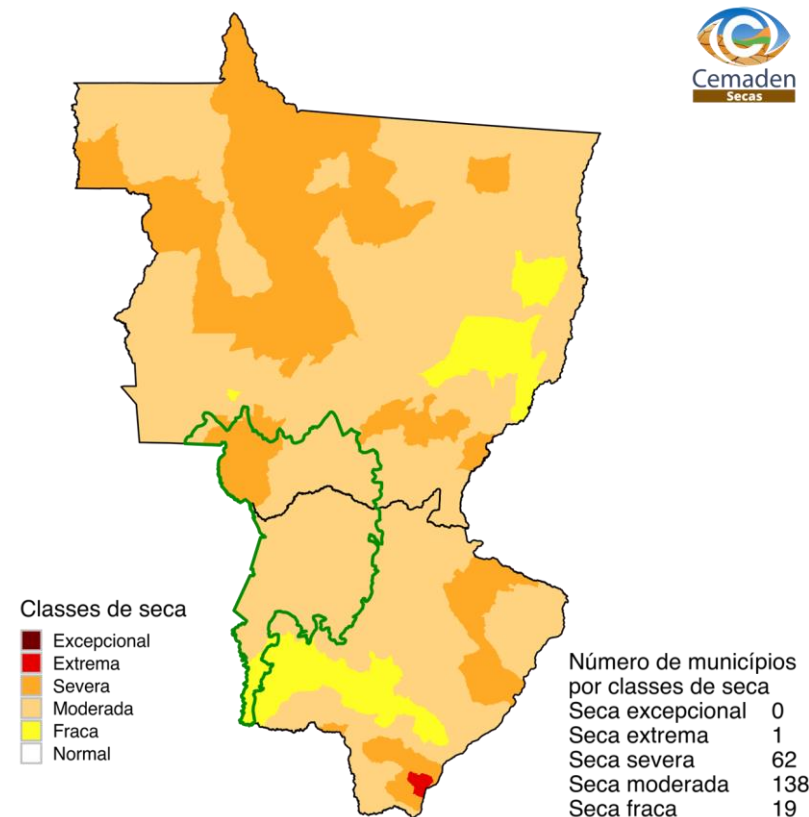
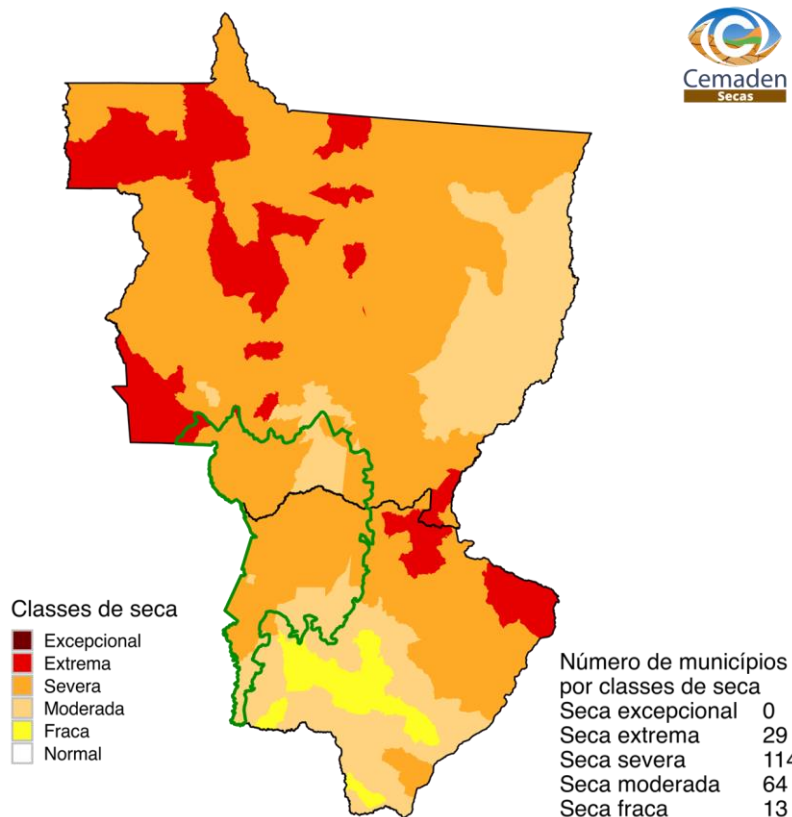
Agosto 2024
Índice Padronizado de Precipitação (SPI, 6 meses)
Fonte: Cemaden/MCTI.

ÍNDICE INTEGRADO DE SECA - IIS

(SPI3 E 6 + VHI + AUS): AGOSTO/2024

IIS 3 MESES

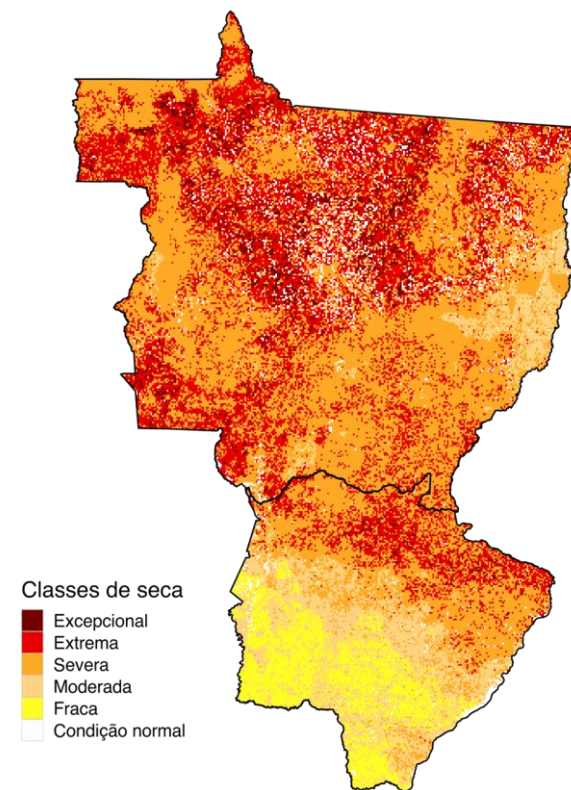
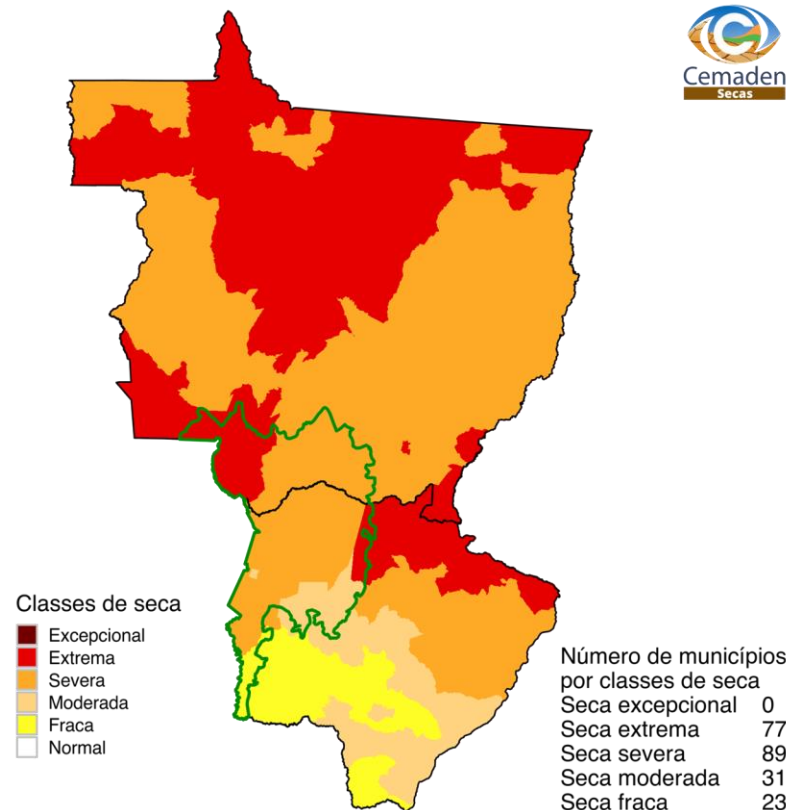
IIS 6 MESES



ÍNDICE INTEGRADO DE SECA - PREVISÃO

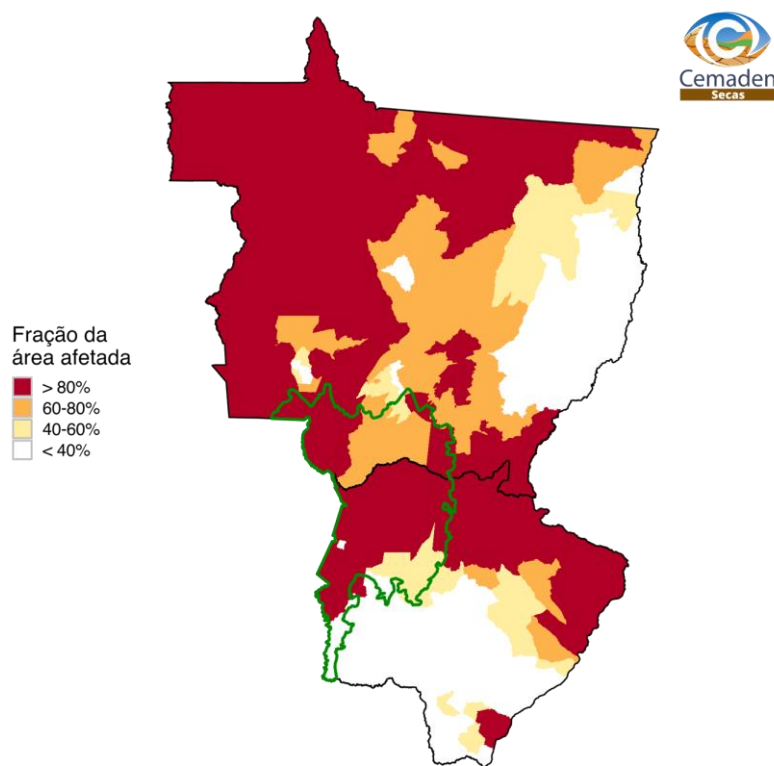
(SPI3+ VHI + AUS)

IIS 3 MESES



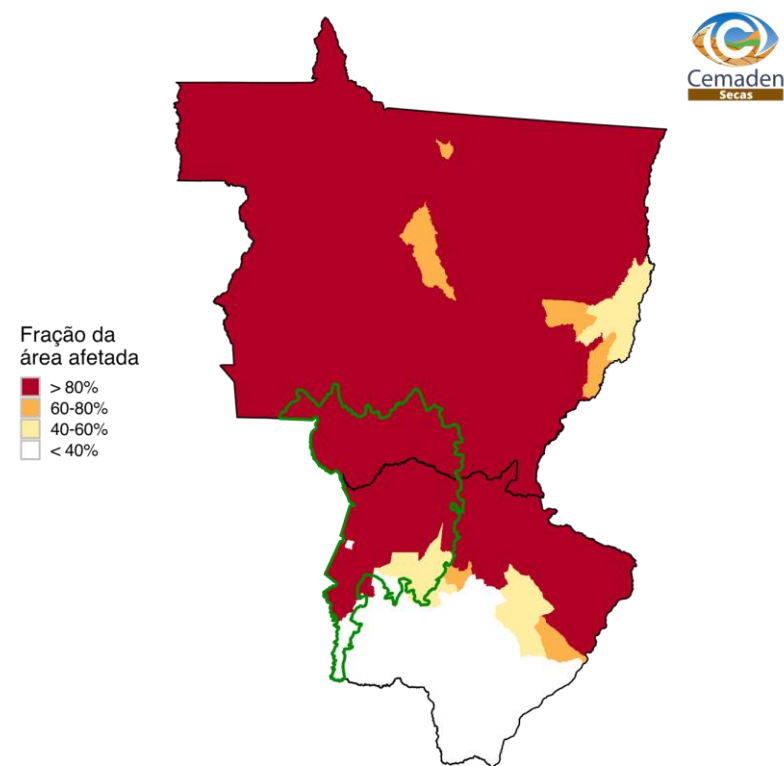
ÁREAS DE PASTAGENS E AGRÍCOLAS AFETADAS PELA SECA

OBSERVADO



Agosto 2024
Fração da área agroprodutiva afetada pela seca
Fonte: Cemaden/MCTI.

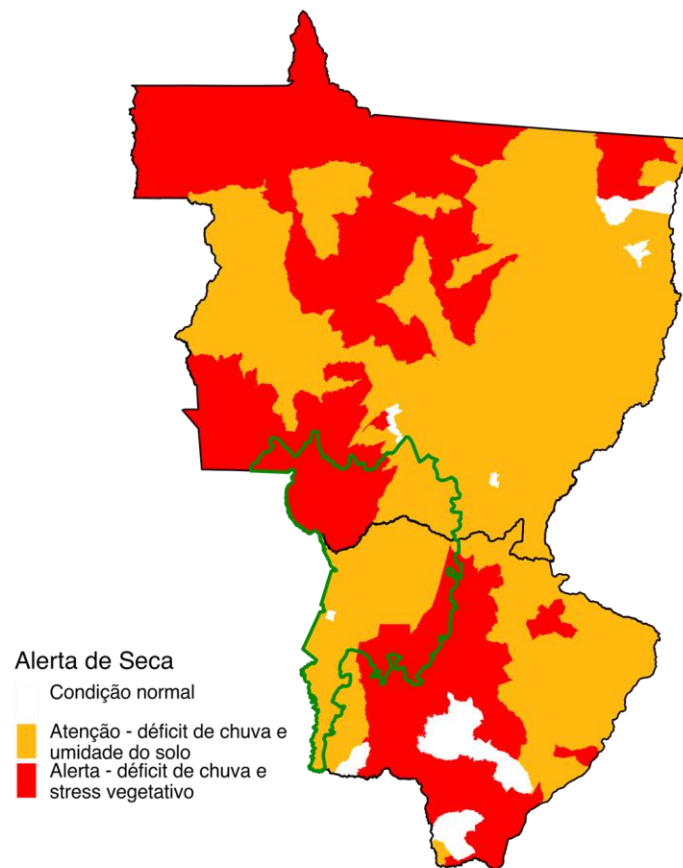
PREVISTO (30 DIAS)



Setembro 2024
Fração da área agroprodutiva afetada pela seca - Previsão
Fonte: Cemaden/MCTI.

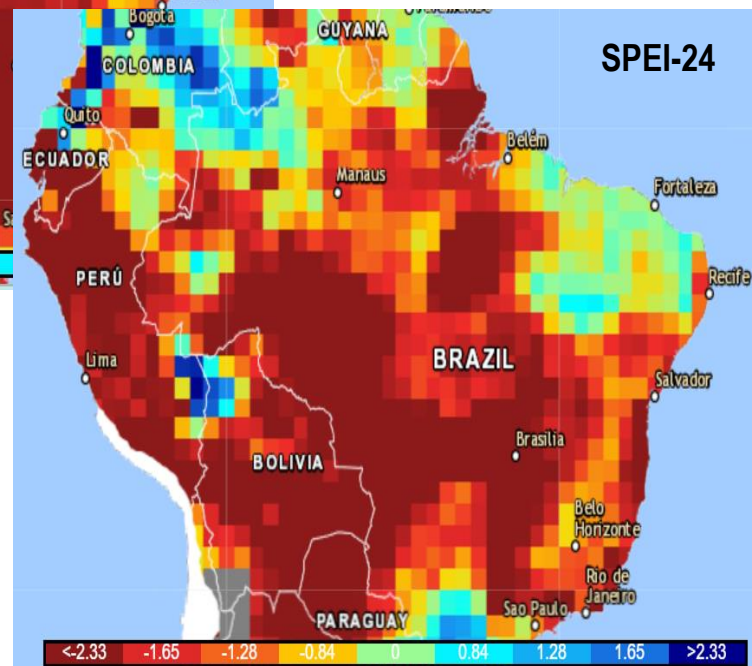
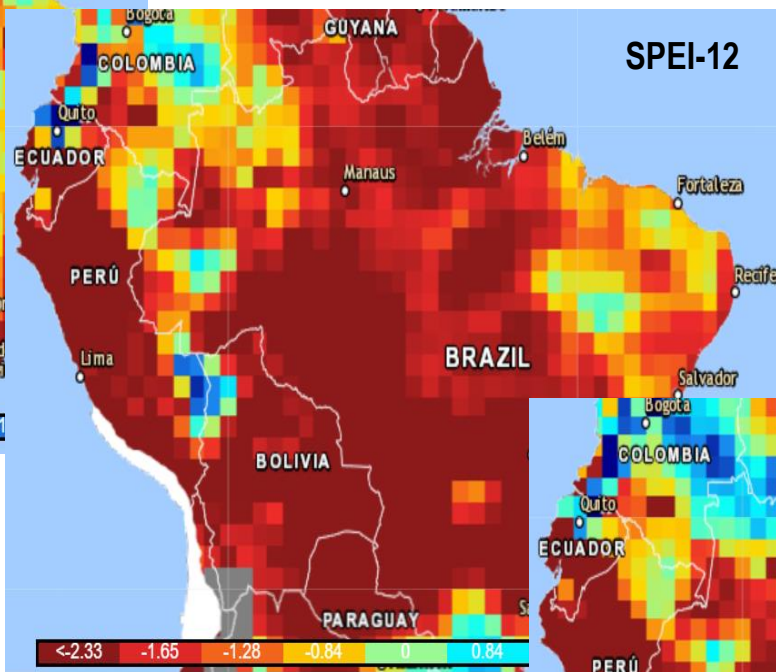
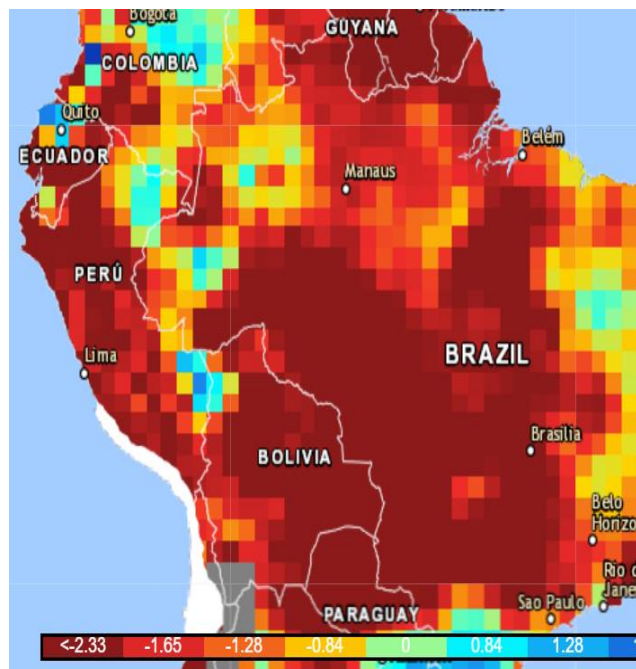
PROGRESSÃO INCREMENTAL DAS CONDIÇÕES DE SECA (PICS)

AGOSTO/2024



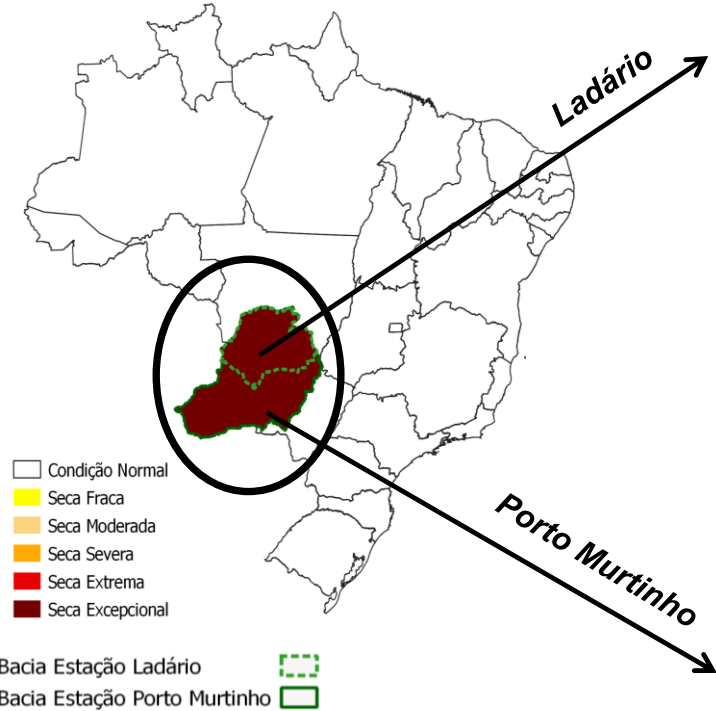
Índice Padronizado de Precipitação – Evapotranspiração Potencial – SPEI

Agosto/2024



Seca Hidrológica na bacia do Rio Paraguai

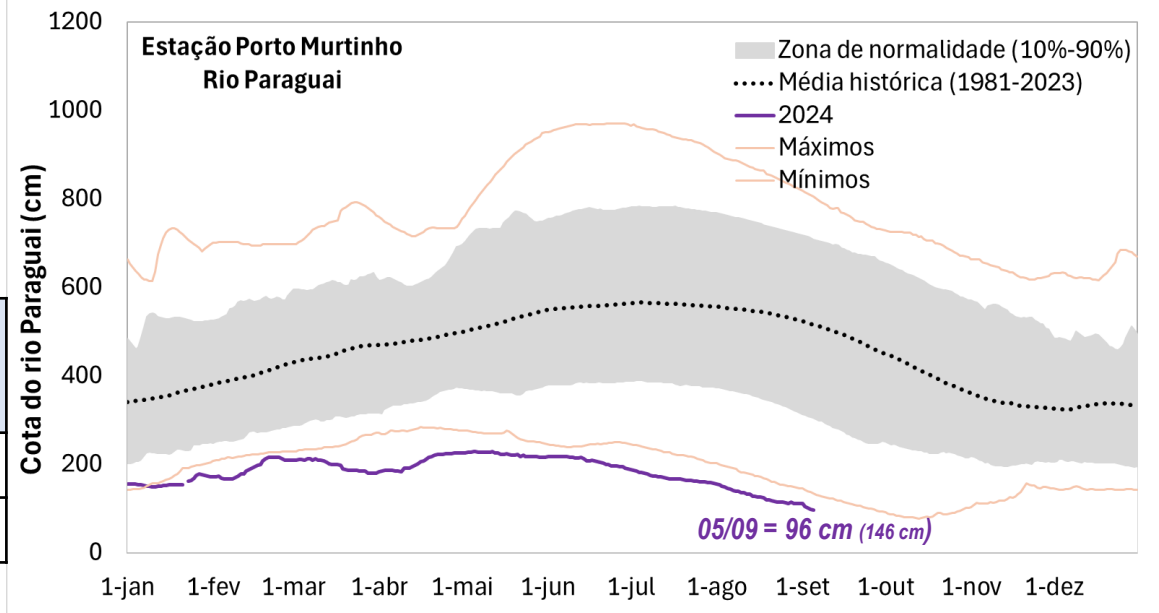
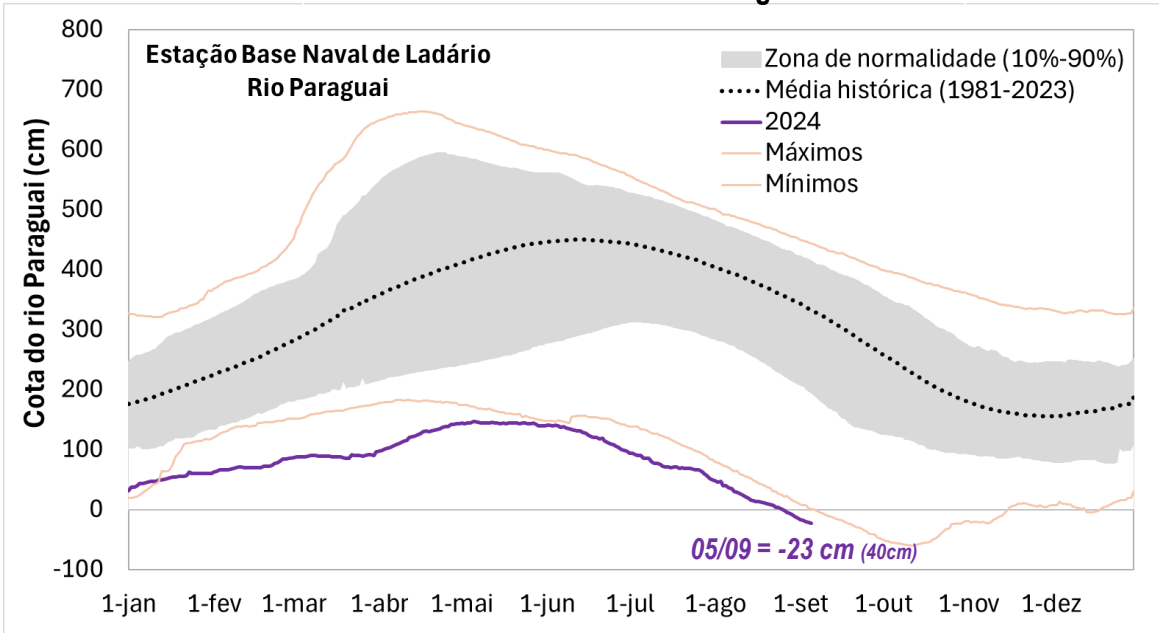
Índice Padronizado Bivariado (Chuva-Cota) – TSI 12 meses



Valores médios mensais

Estação	Cota média Julho	Cota média Agosto	% da MLT Agosto
Ladário	74 cm	17 cm	5%
P. Murtinho	169 cm	128 cm	33%

Cotas diárias - Rio Paraguai



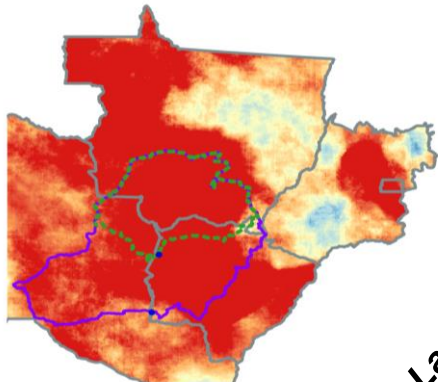
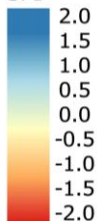
Seca Hidrológica na bacia do Rio Paraguai

Índice Padronizado Bivariado (Chuva-Cota) - TSI

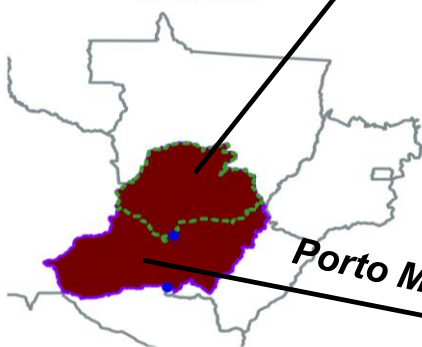
Agosto/2024

SPI 12

SPI



TSI 12

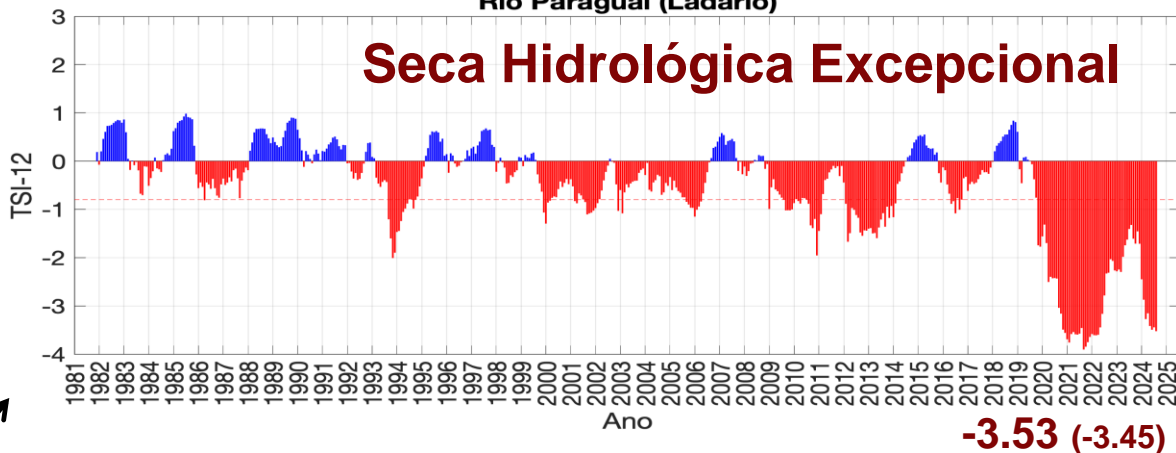


Ladário

Porto Murtinho

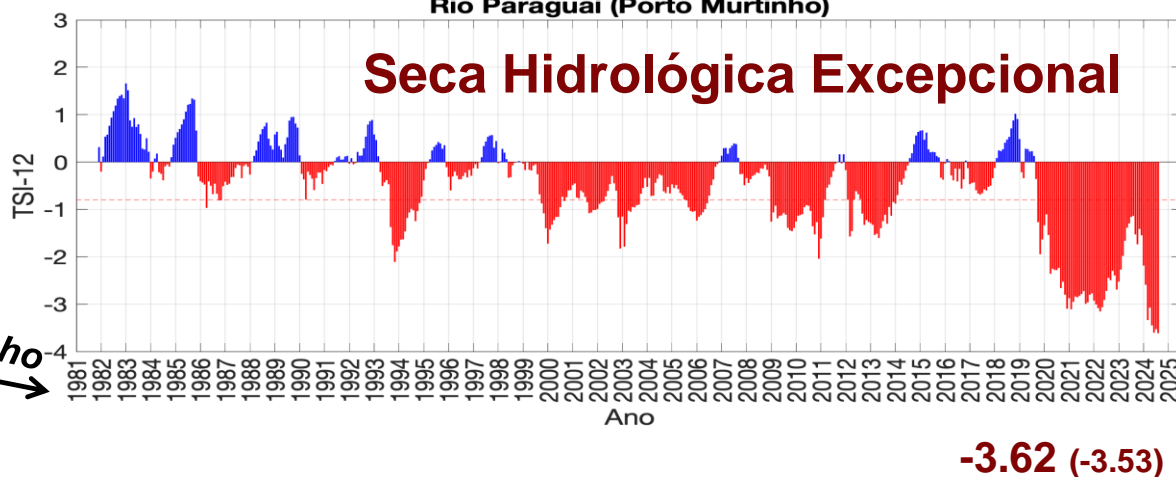
Rio Paraguai (Ladário)

Seca Hidrológica Excepcional

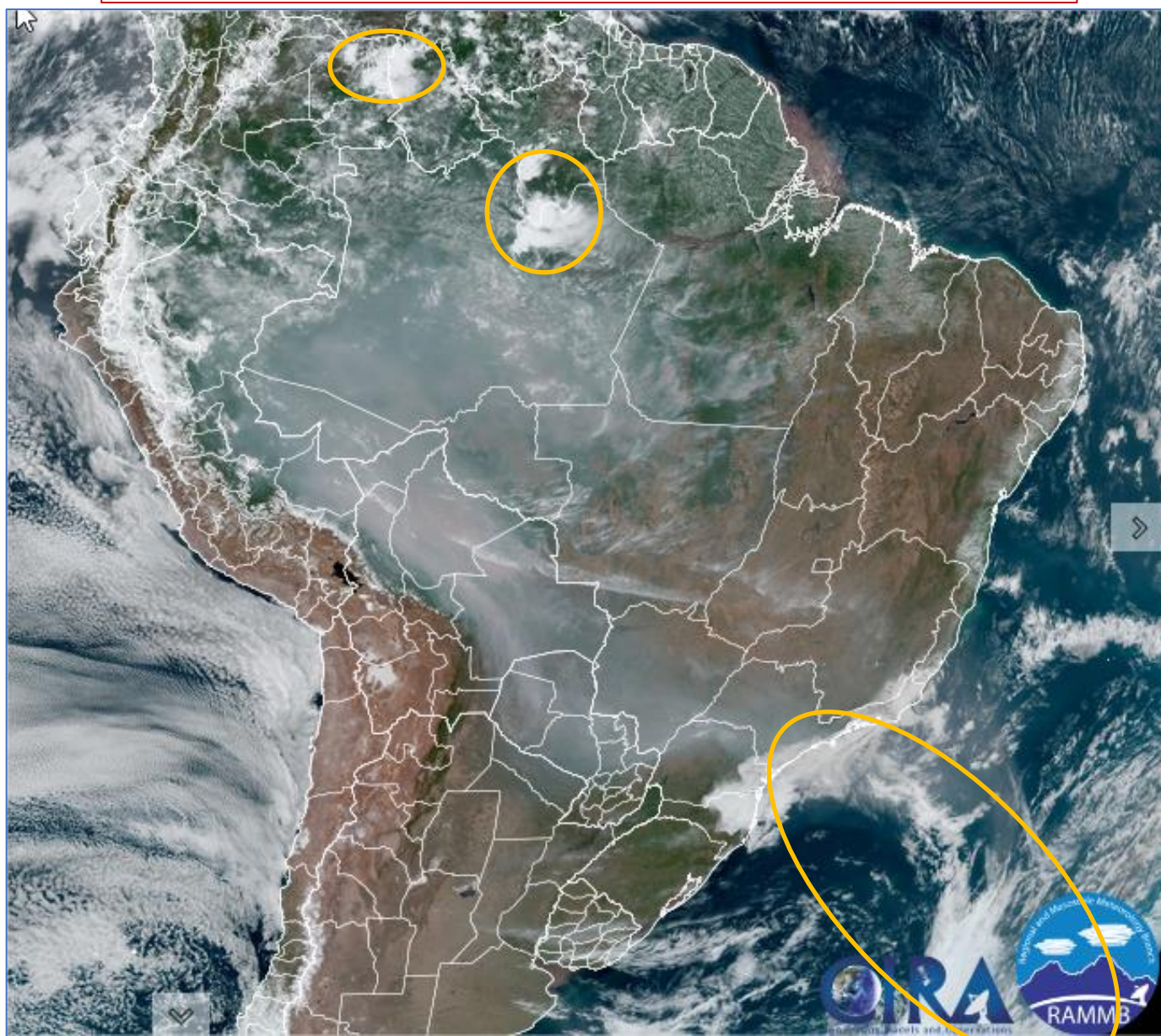


Rio Paraguai (Porto Murtinho)

Seca Hidrológica Excepcional

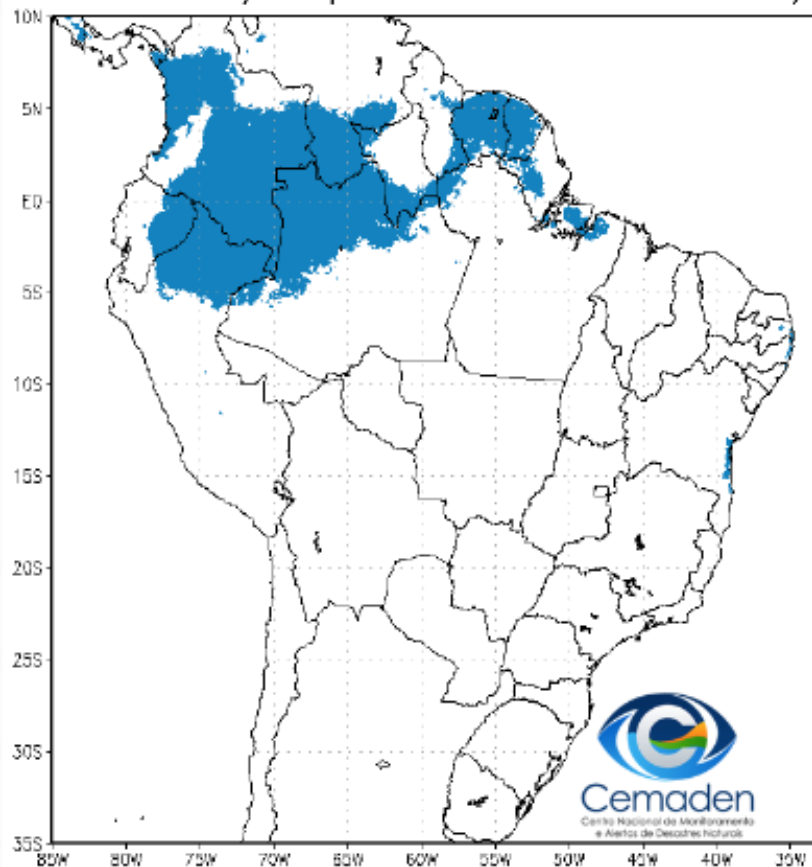


Situação meteorológica atual

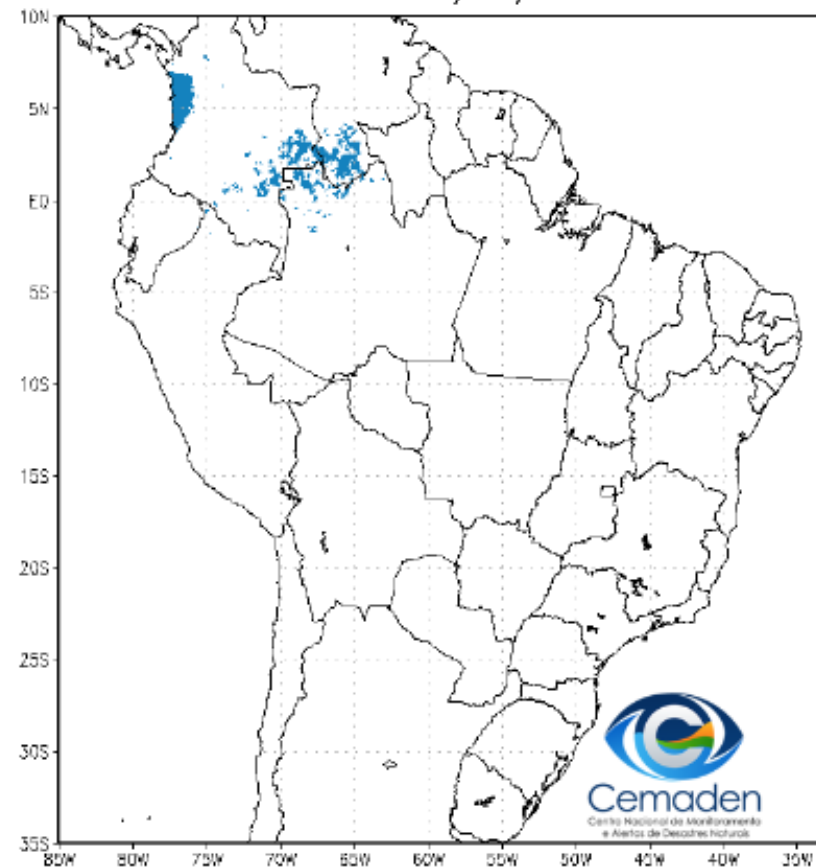


Situação de Estação Chuvosa

Climatologia da Precipitação (2001–2023)
Inferior 2 mm/dia por 4 de 5 dias Período: 05/09

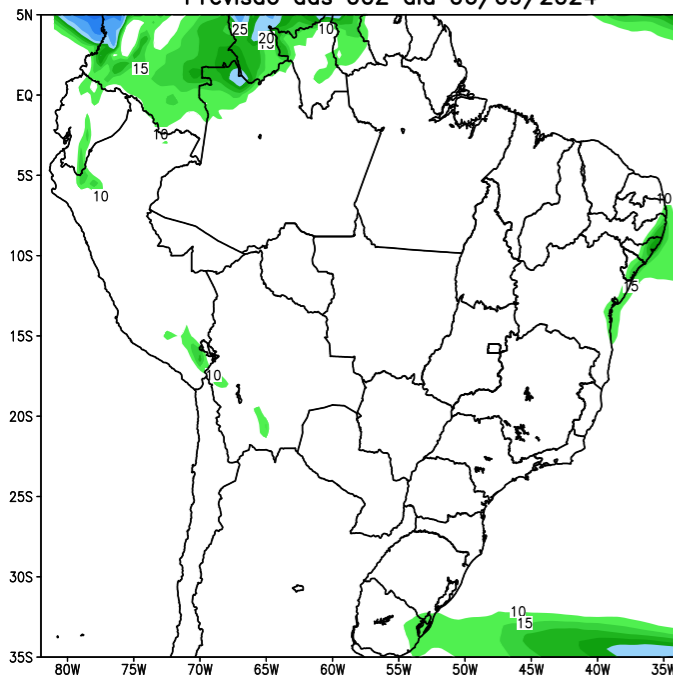


Precipitação Inferior 2 mm/dia por 4 de 5 dias
Período: 05/09/2024

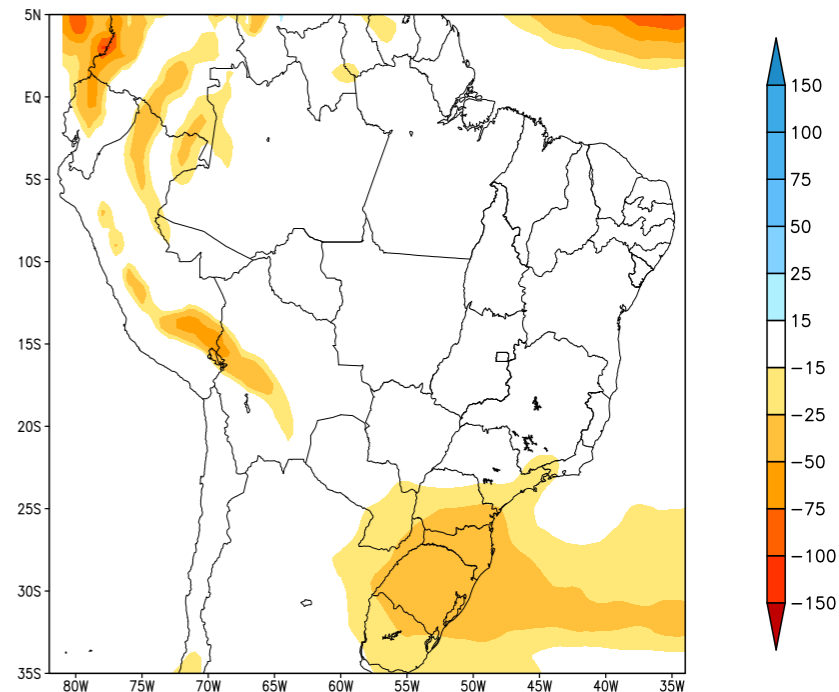


Previsão para as próxima semana

GEFS / BRASIL
Precipitação acumulada 1aSem (mm)
Previsão das 00Z dia 06/09/2024

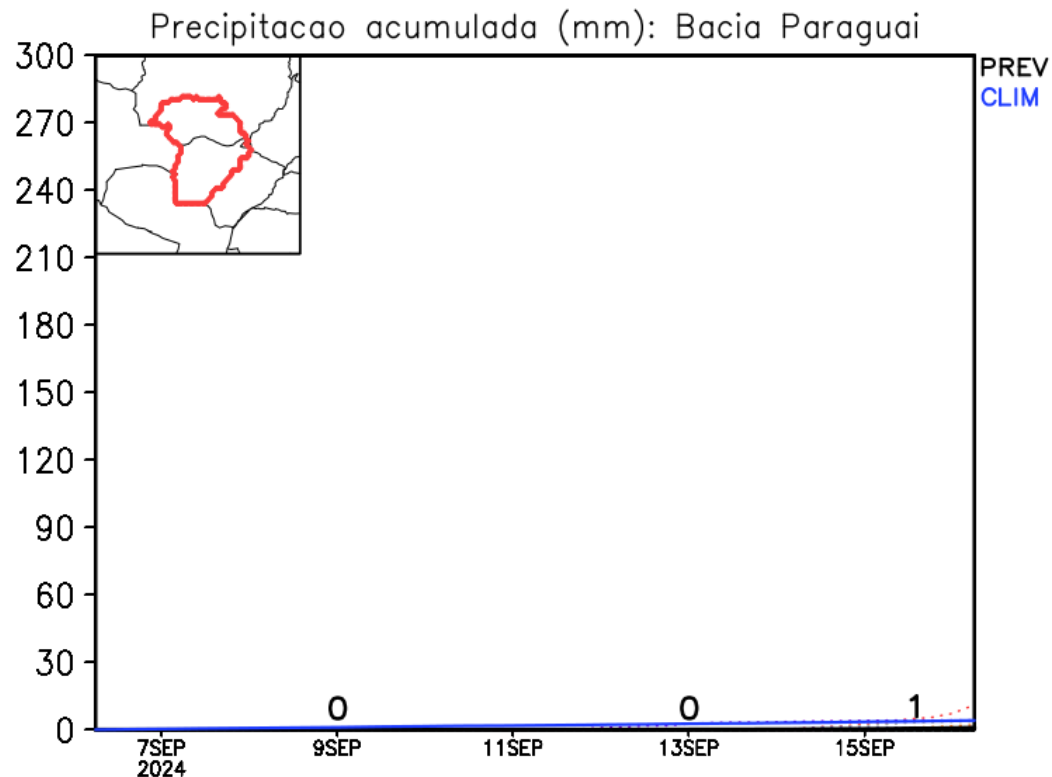
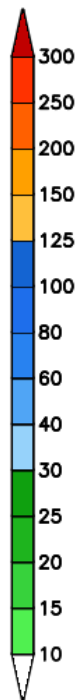
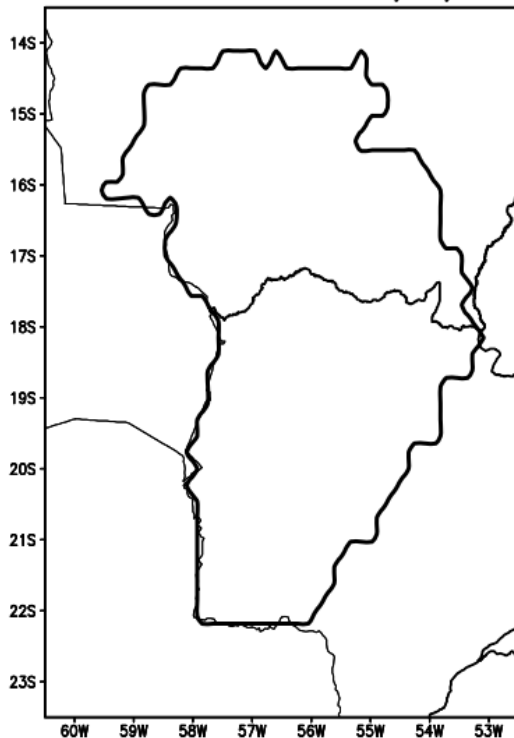


Anomalia de Precipitação BR (mm)
Período: 2024090600 a 2024091300



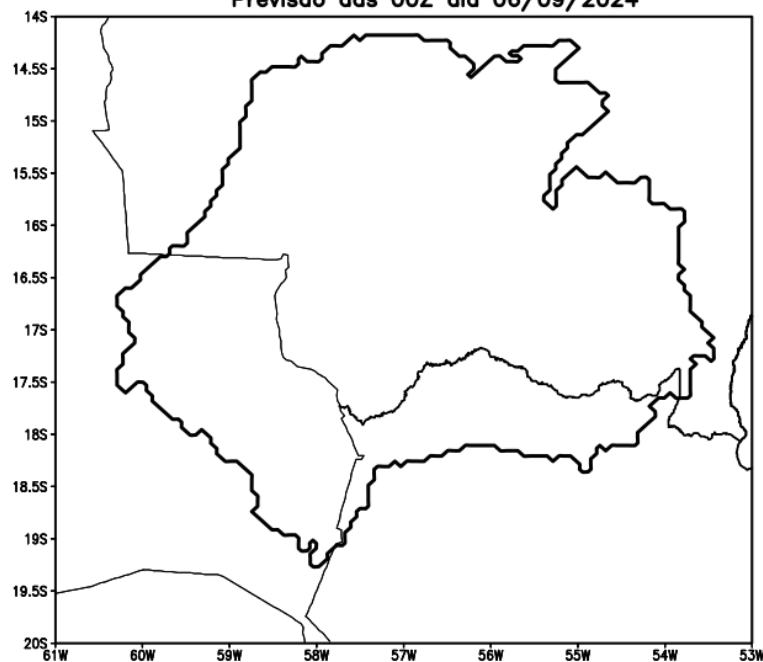
Previsão de chuva Bacia do Alto Paraguai

GEFS / Bacia do Rio Paraguai
Precipitação acumulada em 7 dias (mm)
Previsão das 00Z dia 06/09/2024

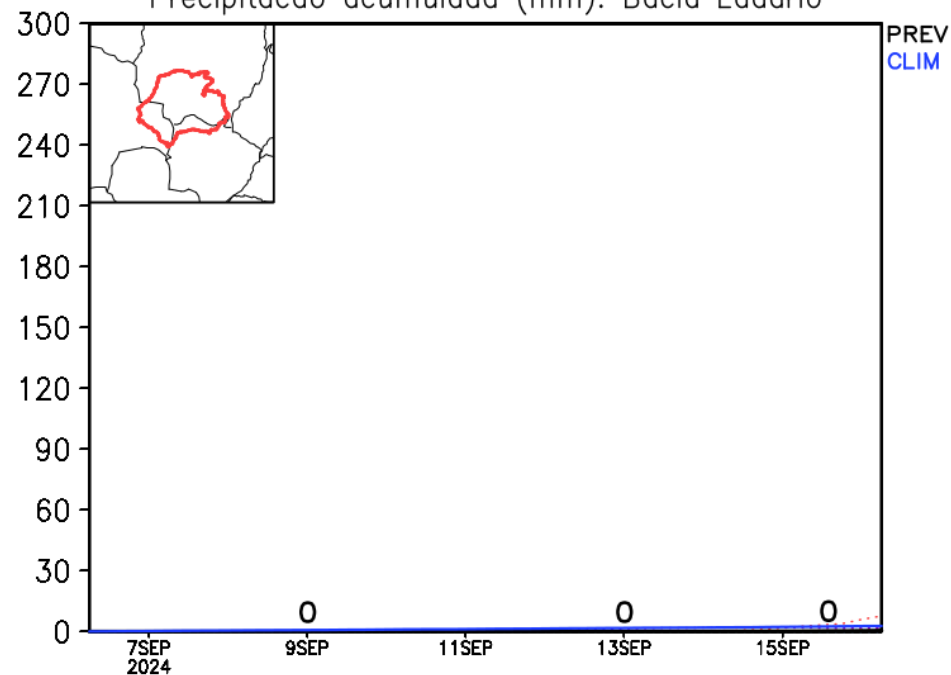


Previsão de chuva sub Bacia de Ladário

GEFS / Bacia Ladario
Precipitacao acumulada em 7 dias (mm)
Previsao das 00Z dia 06/09/2024

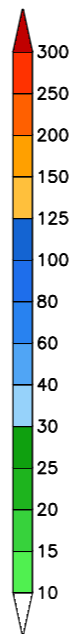
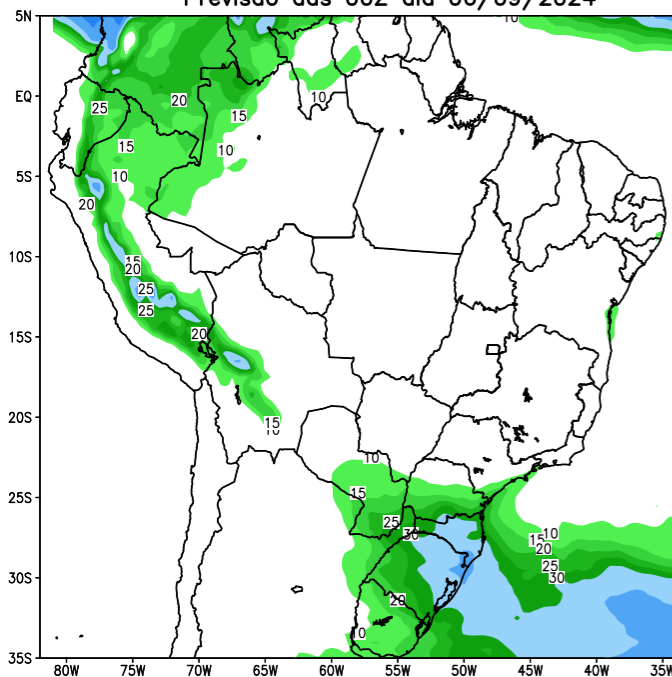


Precipitacao acumulada (mm): Bacia Ladario

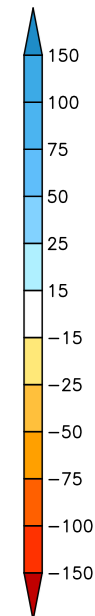
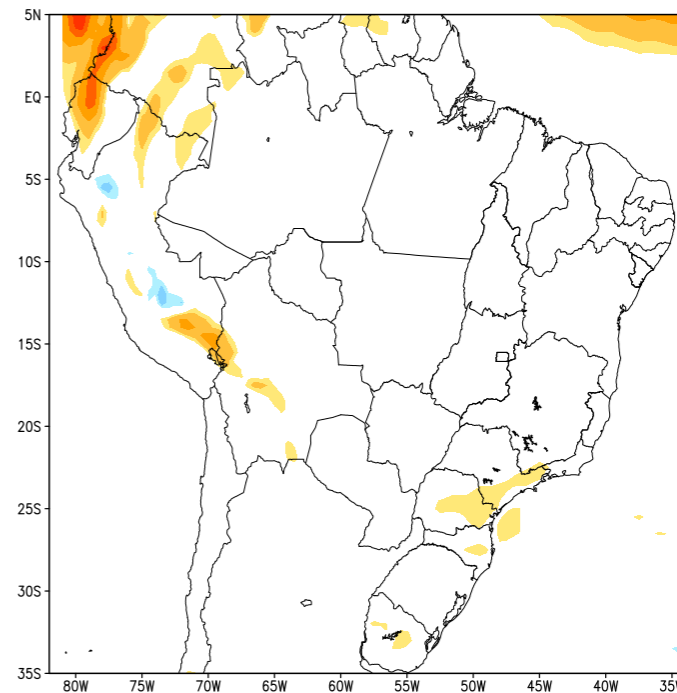


Tendência para a segunda semana

GEFS / BRASIL
Precipitação acumulada 2aSem (mm)
Previsão das 00Z dia 06/09/2024

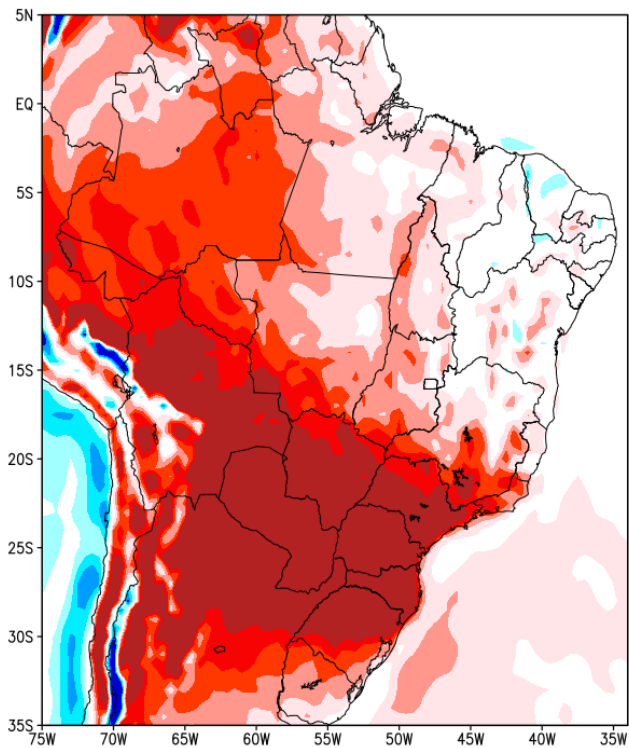


Anomalia de Precipitação BR (mm)
Período: 2024091400 a 2024092000

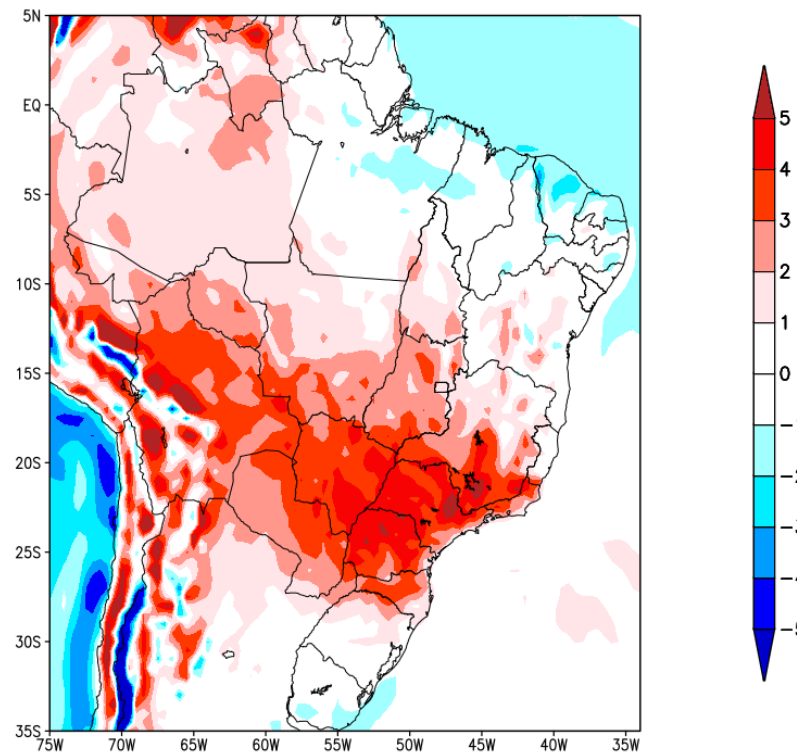


Previsão de Temperatura

Anomalia de Temperatura BR (C)
Período: 2024090600 a 2024091300



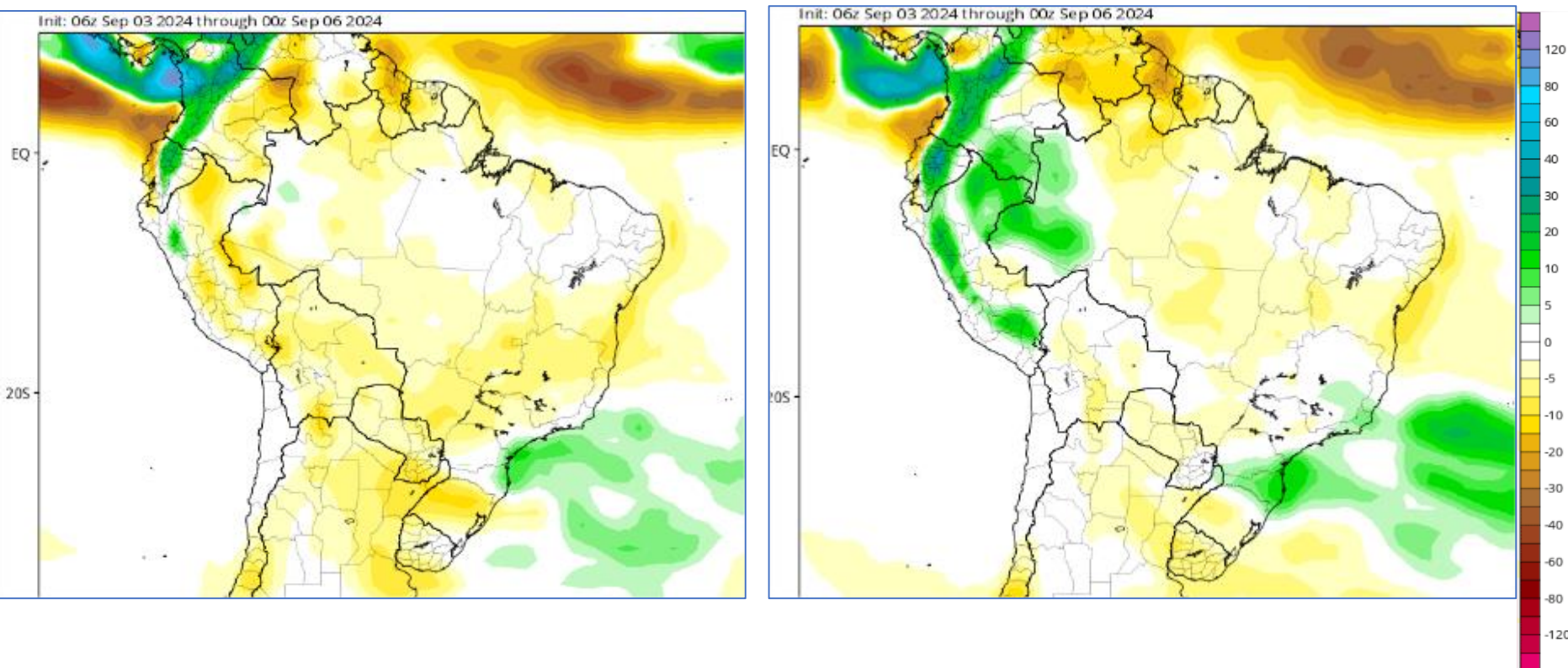
Anomalia de Temperatura BR (C)
Período: 2024091400 a 2024092000



Tendência 3a e 4a semanas

20-27 Set

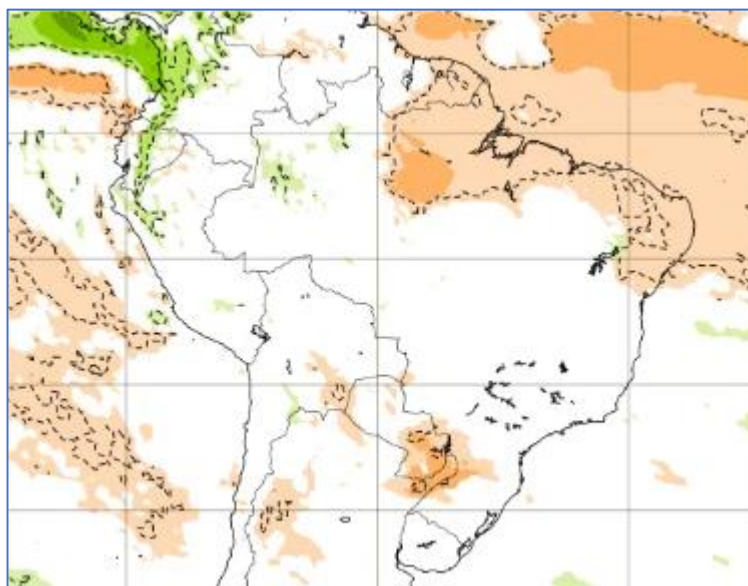
27 Set- 04 Out



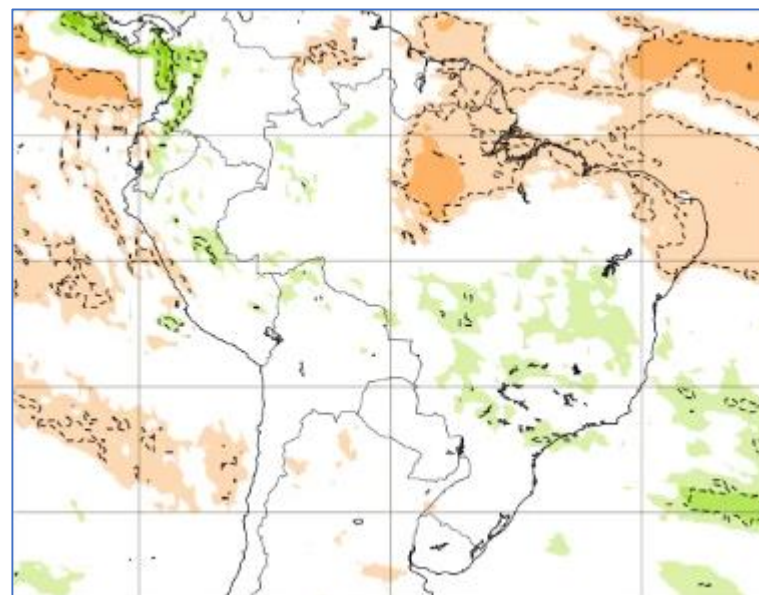
CFSv2 Accumulated Precip. Anomaly (mm)

Tendência para 3ª e 4ª semanas

23-30 Set

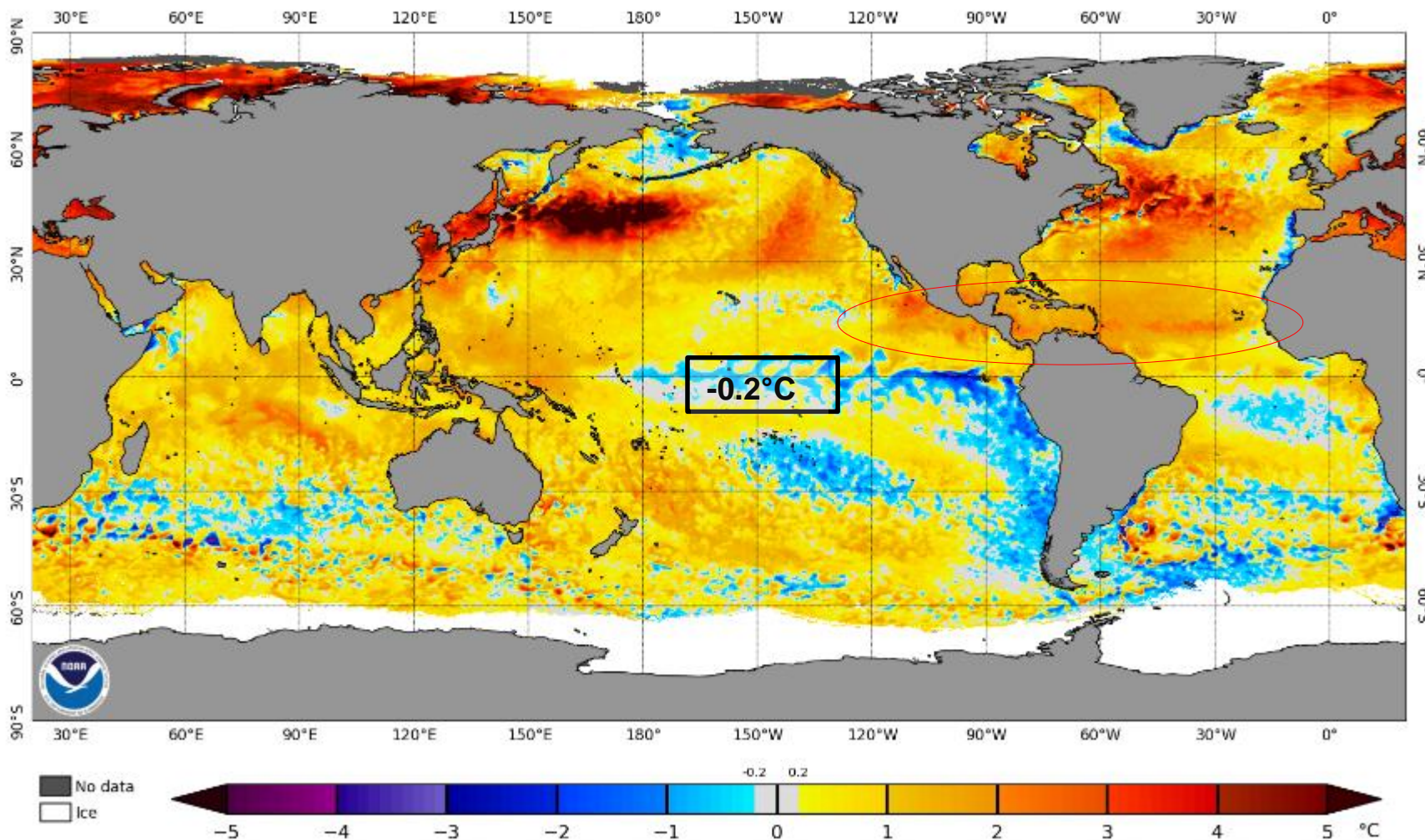


30 Set – 07 Out

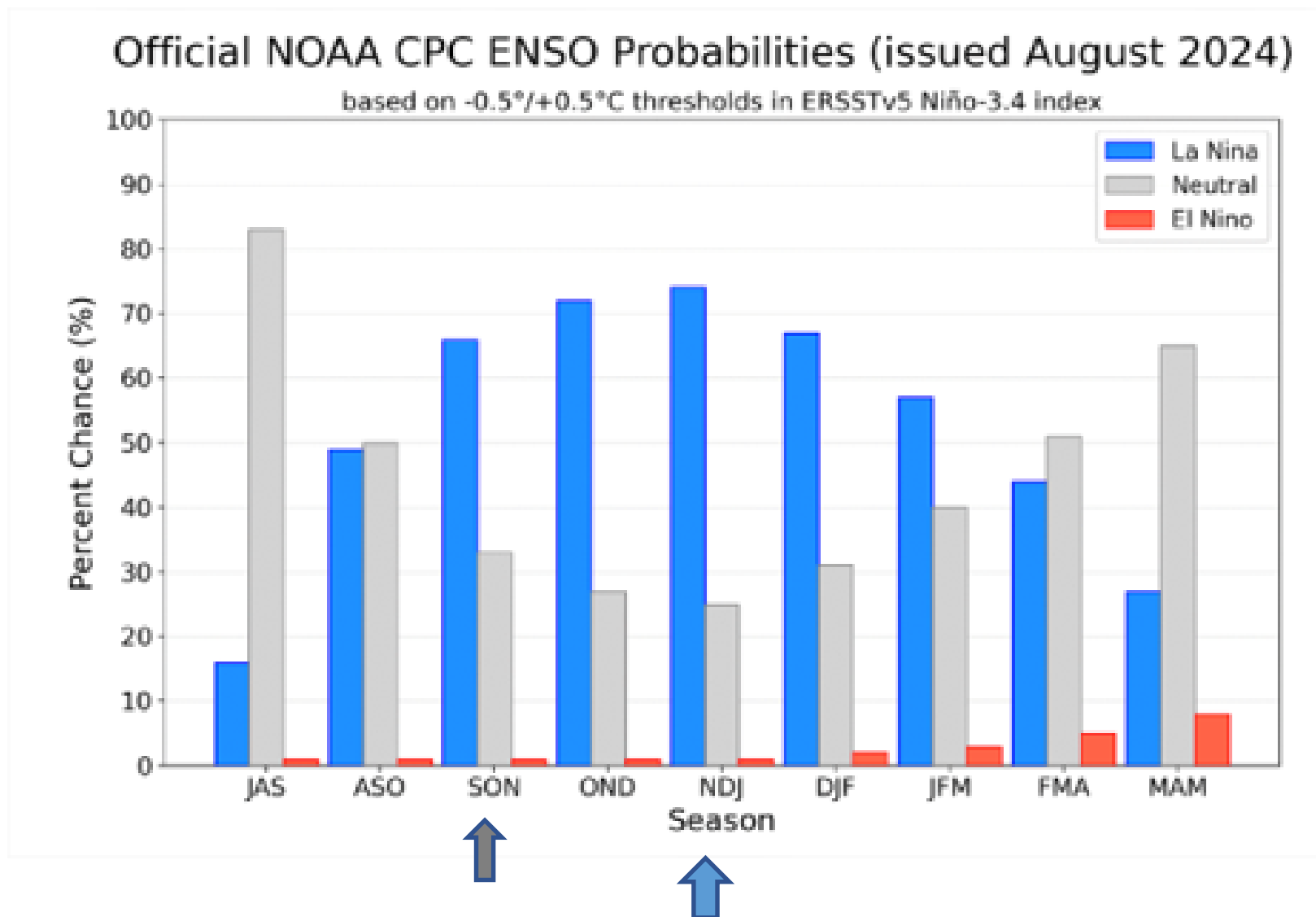


Status Atual: La Niña Watch

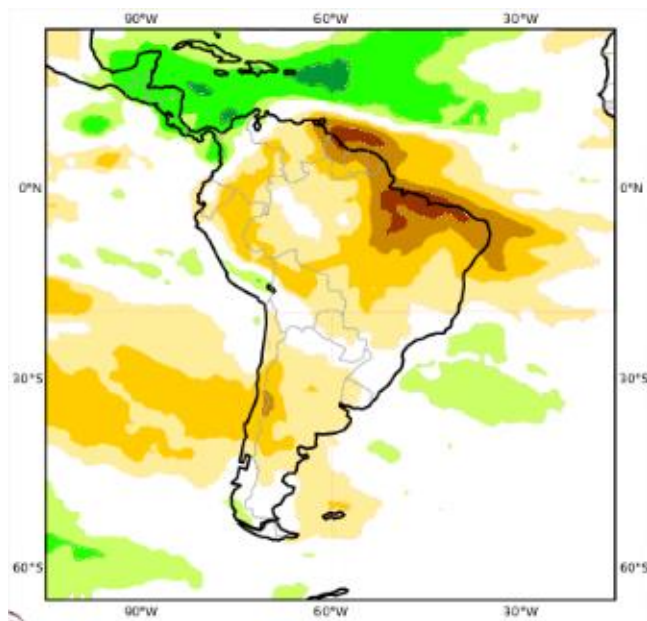
NOAA Coral Reef Watch Daily 5km SST Anomalies (v3.1) 5 Sep 2024



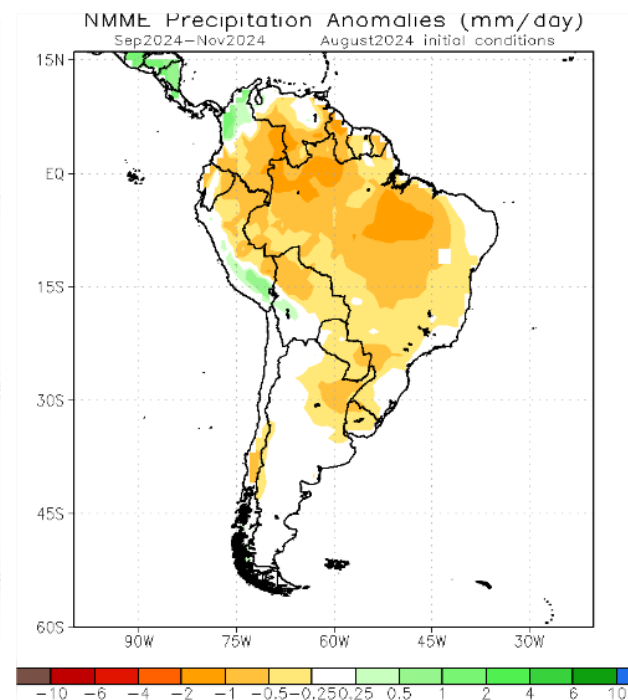
Previsão do “ENSO”



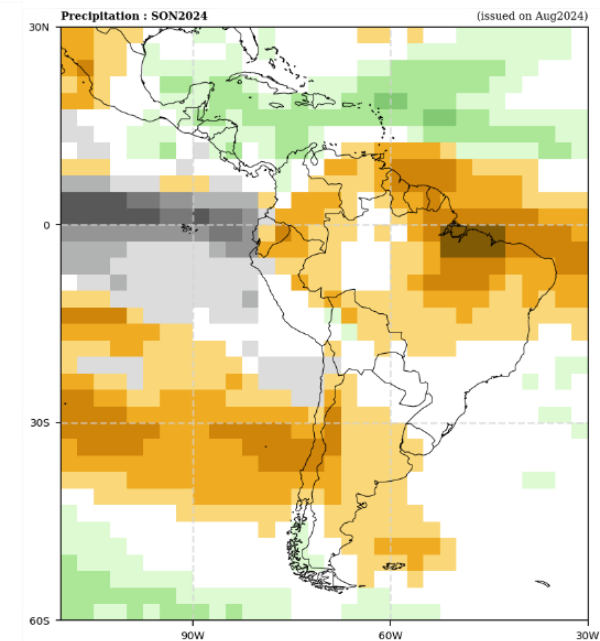
Previsão Sazonal de Chuva Multi-Modelo para SON



Modelos Europeus

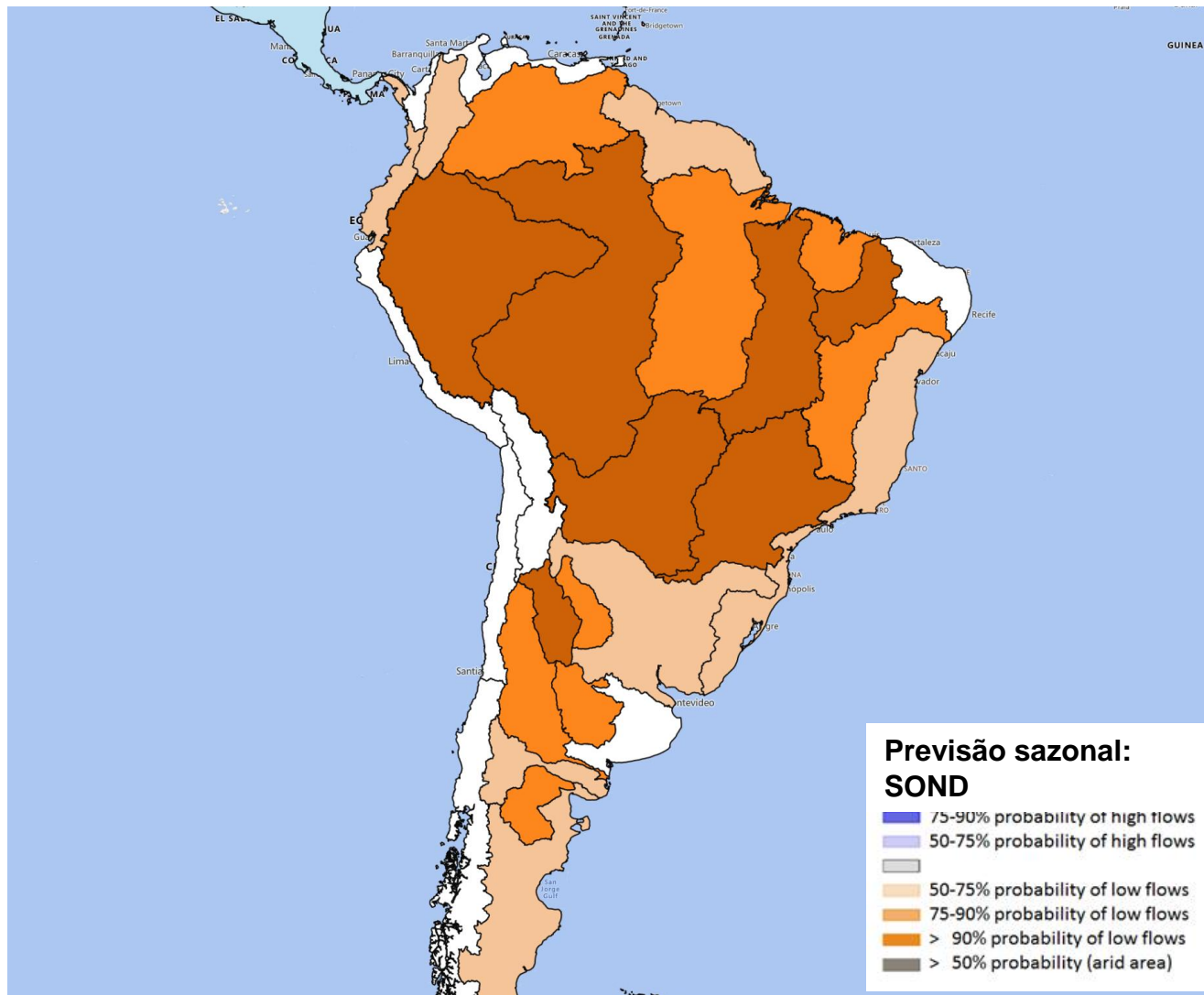


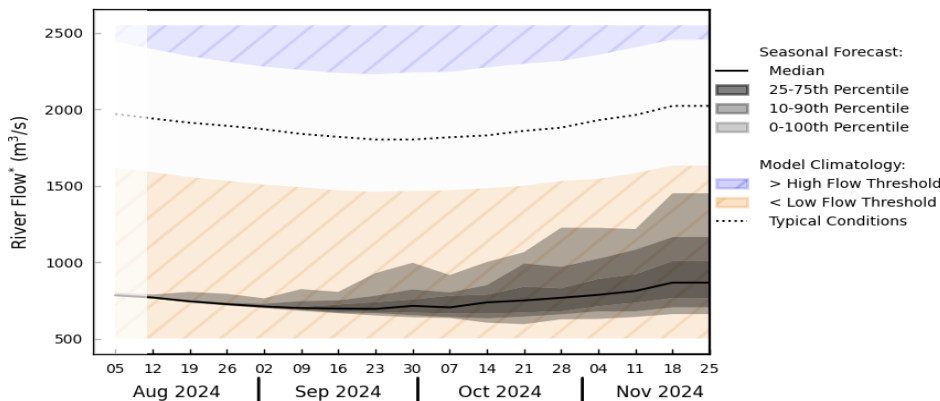
Modelos Americanos



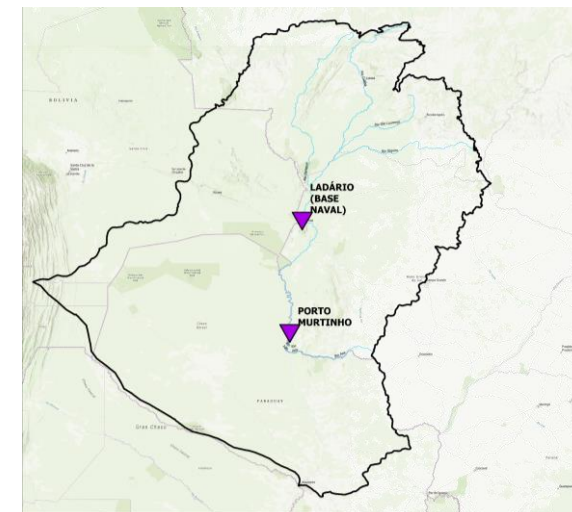
Modelos da Organização
Meteorológica Mundial

Previsão Hidrológica (GLOFAS)

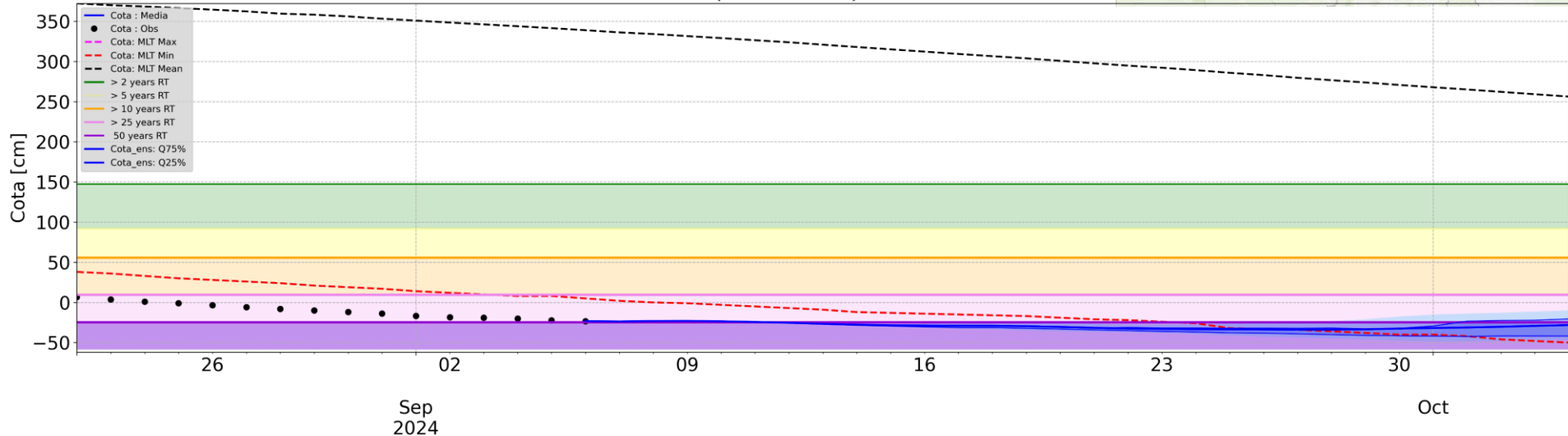




*River flow is a weekly average, displayed at start of week (dates shown)
 ** High and low flow thresholds refer to the 80th and 20th percentiles of the model climatology



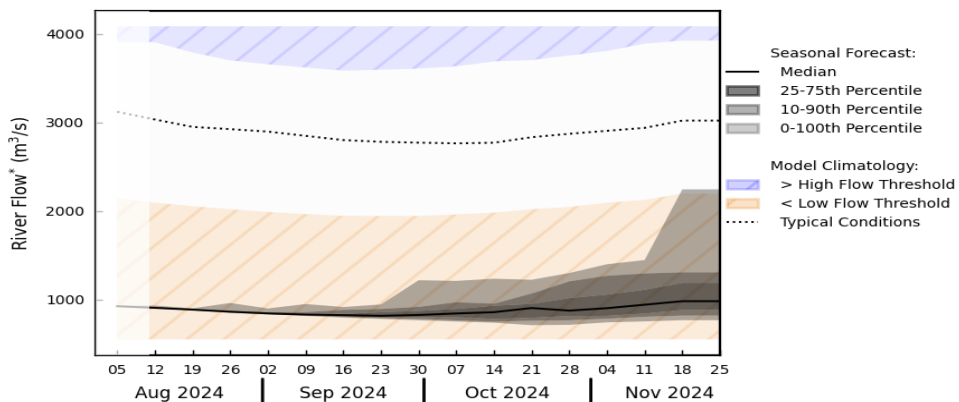
Model Run - 2024-09-06
 LADARIO(BASENAVAL) : RIO PARAGUAI



Dados observados: ANA

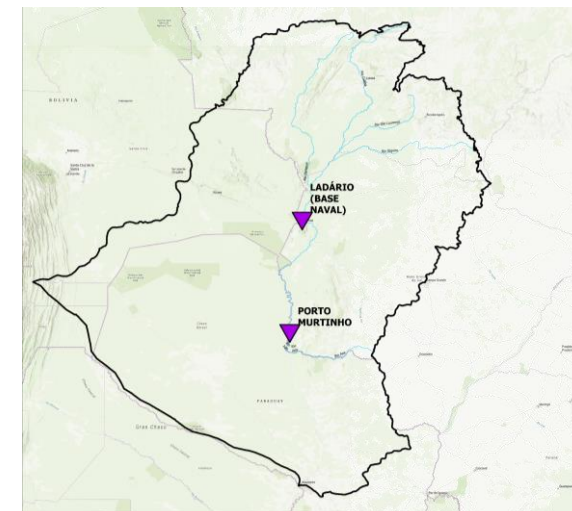
Date

Gráficos e análises: CEMADEN - Previsões: GloFAS

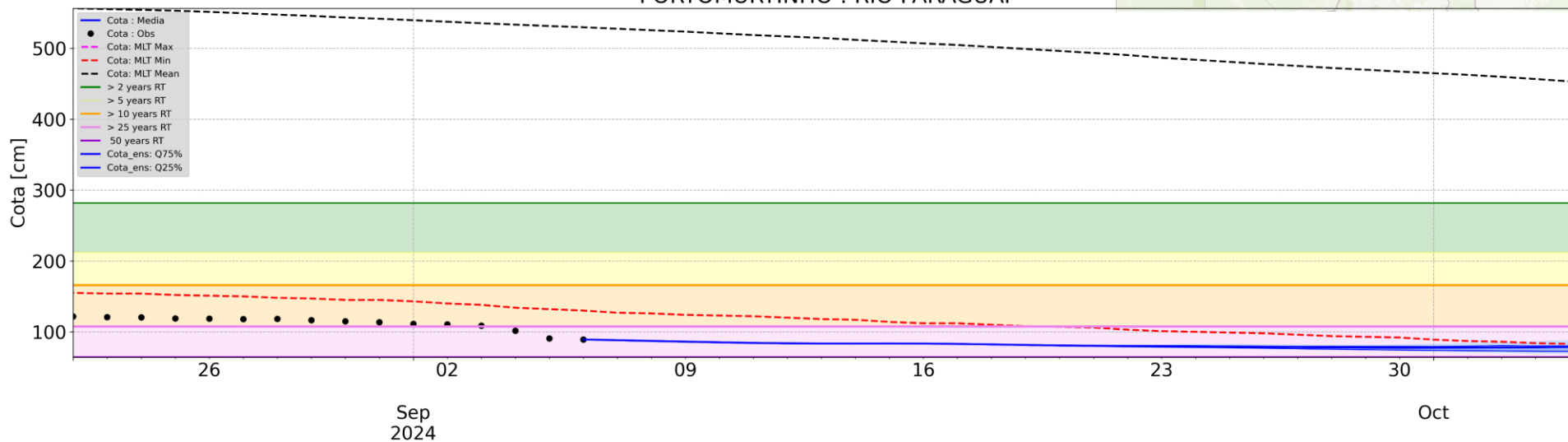


*River flow is a weekly average, displayed at start of week (dates shown)

** High and low flow thresholds refer to the 80th and 20th percentiles of the model climatology



Model Run - 2024-09-06
PORTOMURTINHO : RIO PARAGUAI



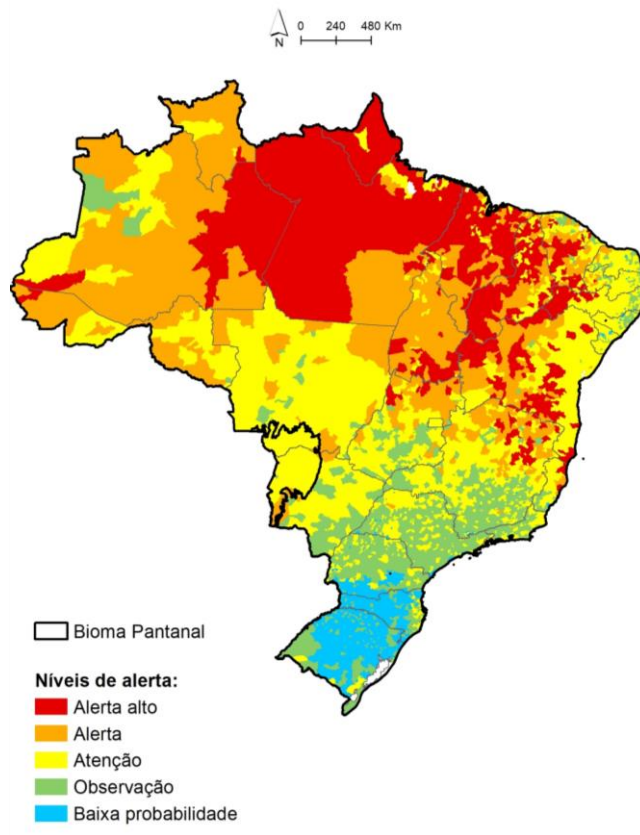
Dados observados: ANA

Date

Gráficos e análises: CEMADEN Previsões: GloFAS

Previsão de probabilidade de fogo - Set-Out-Nov 2024

Previsão de alertas por municípios 2024



Resultados dos níveis de alerta para municípios brasileiros – GloSea6 / MetOffice:

Nível de Alerta	Número de municípios	Área (km ²)
Alerta alto	528	1,625,539
Alerta	485	2,111,239
Atenção	2149	1,991,999
Observação	1664	707,896
Baixa probabilidade	722	215,226

Aumento do número de municípios em níveis de **Alerta Alto** e **Alerta**. Tendo um grande aumento considerável no número de níveis de alerta de **Atenção!**

Destaque para a região da **Amazônia**.