

Monitoramento e Previsões de Chuva para a Bacia do Rio Paraíba do Sul

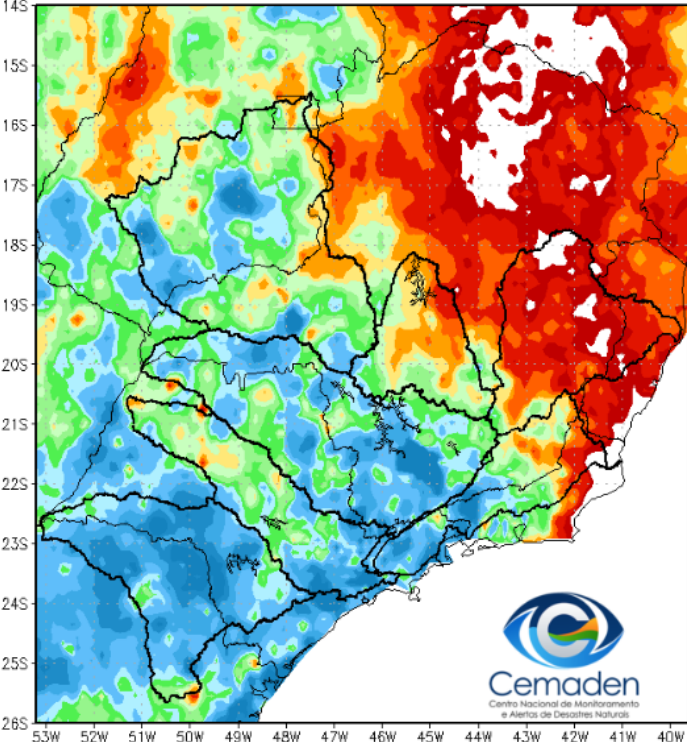


Cemaden
Centro Nacional de Monitoramento
e Alertas de Desastres Naturais

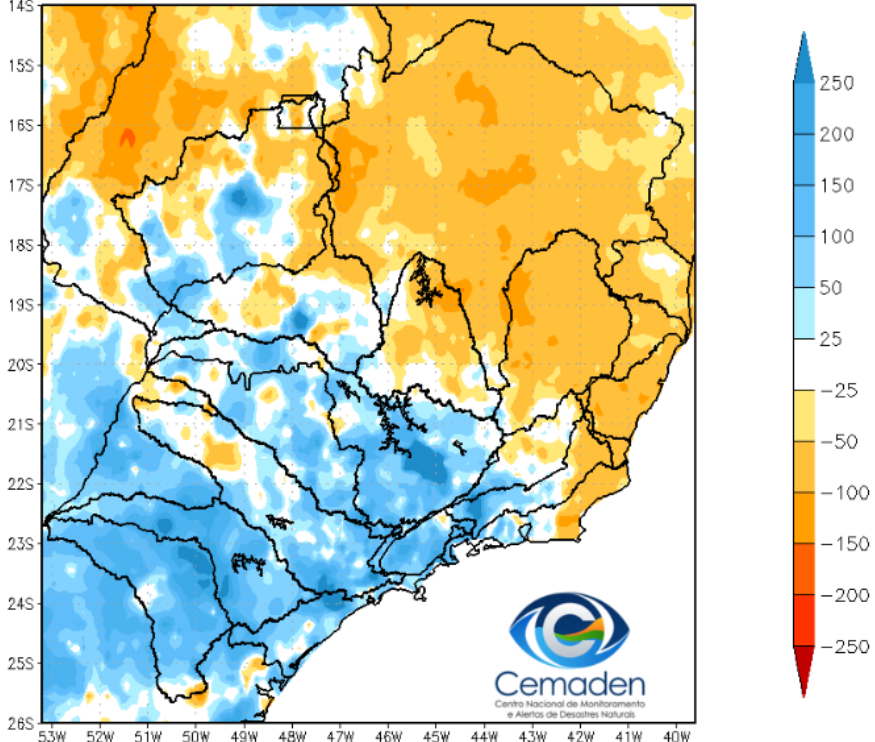
14 de Março de 2023

Chuva últimos 30 dias

Precipitacao Acumulada (mm) A.S.
Periodo: 11/02/2023 a 13/03/2023

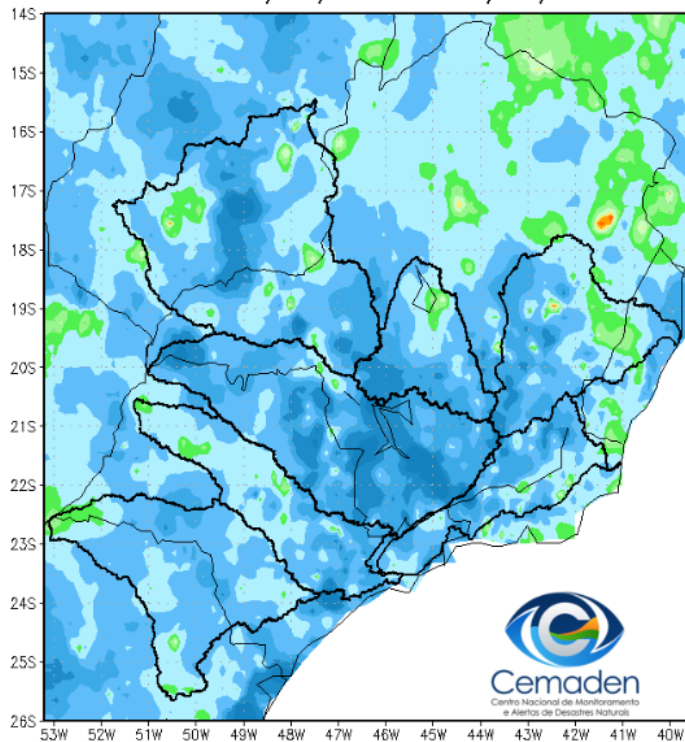


Anomalia de Precipitacao (mm) A.S.
Periodo: 11/02/2023 a 13/03/2023

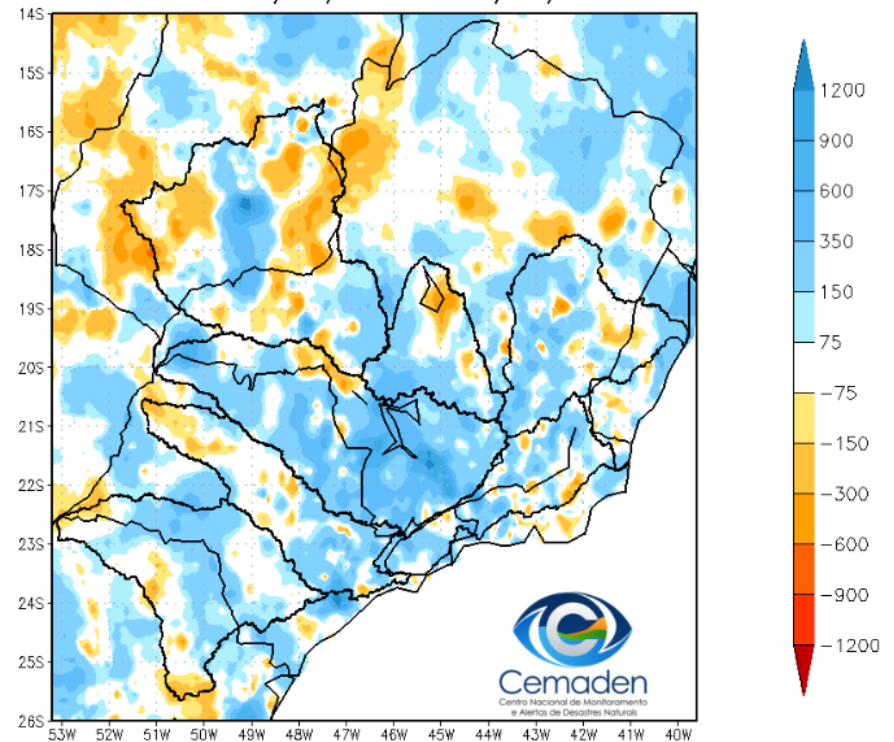


Chuva desde 01 de outubro

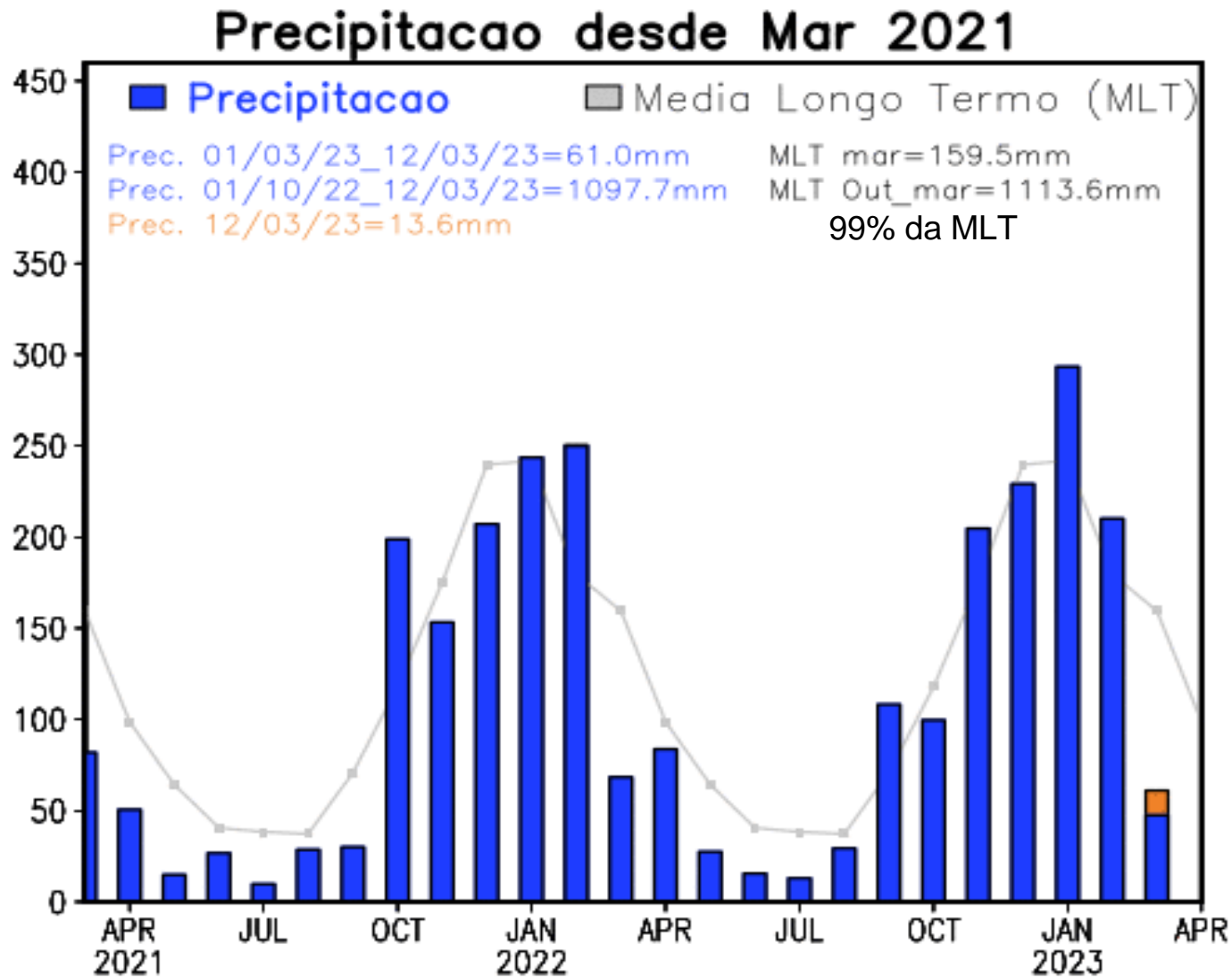
Precipitacao Acumulada (mm) A.S.
Período: 01/10/2022 a 13/03/2023



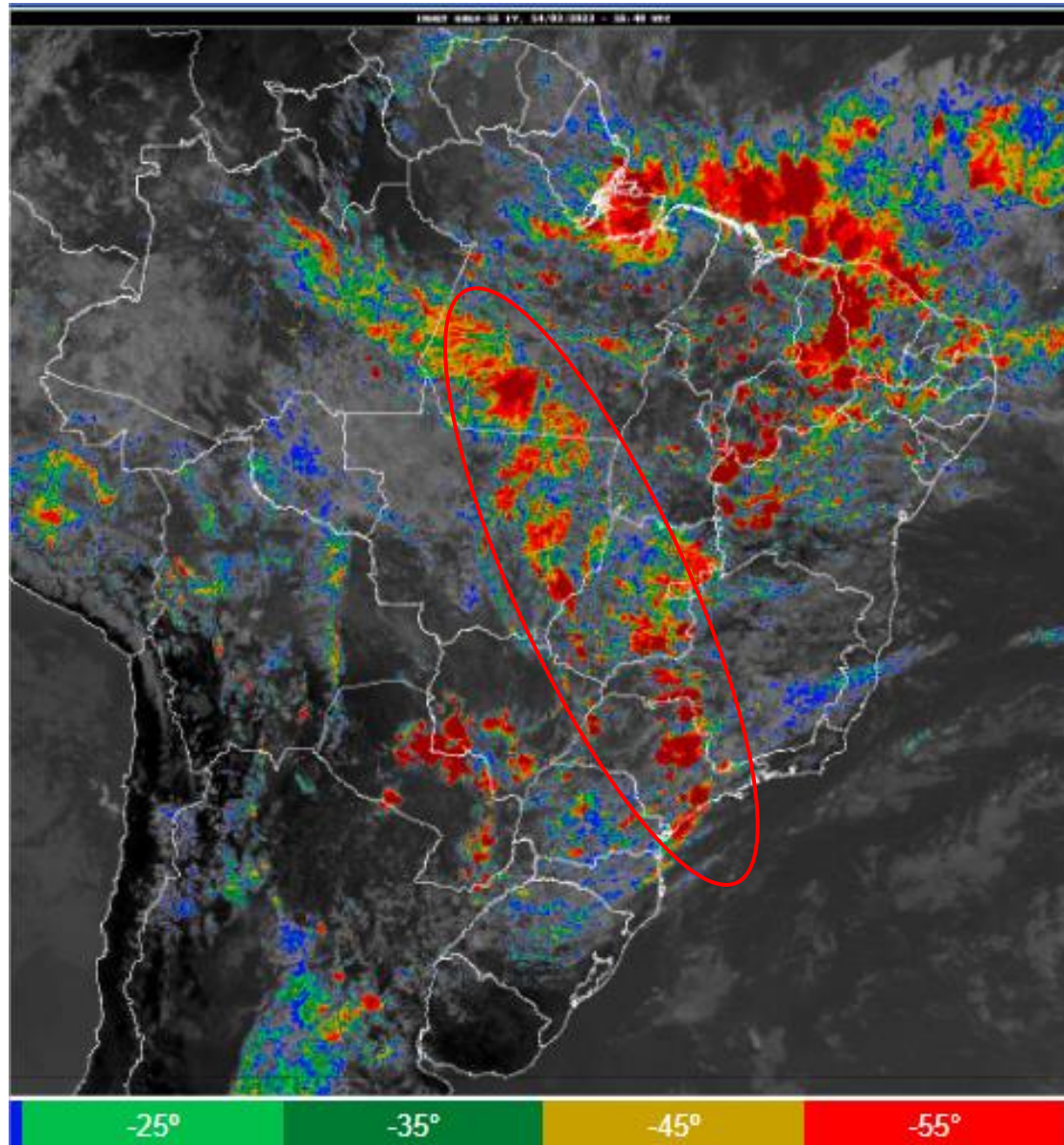
Anomalia de Precipitacao (mm) A.S.
Período: 01/10/2022 a 13/03/2023



Precipitação nos últimos 2 anos

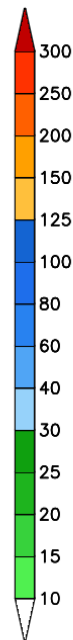
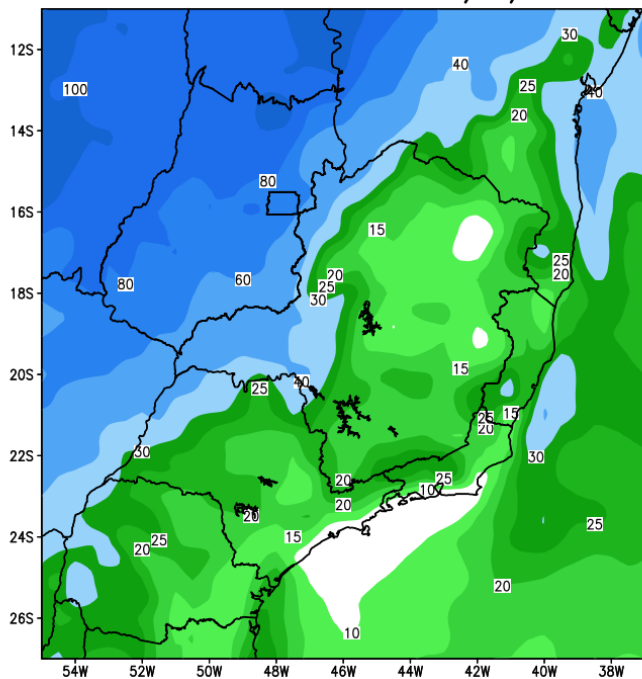


Situação meteorológica atual

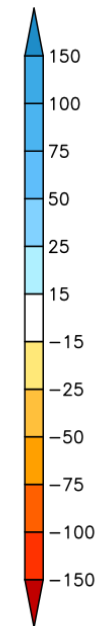
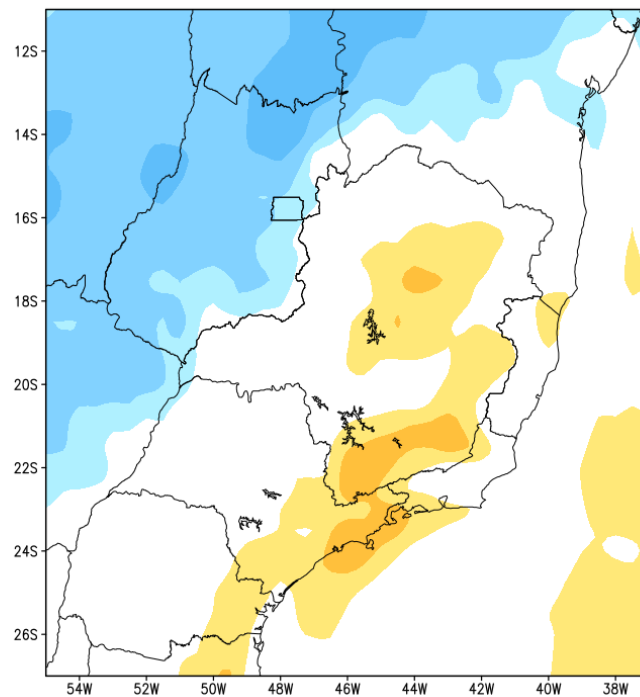


Previsão de chuva para os próximos 7 dias

GEFS / BRASIL_SE
Precipitacao acumulada 1aSem (mm)
Previsao das 00Z dia 14/03/2023

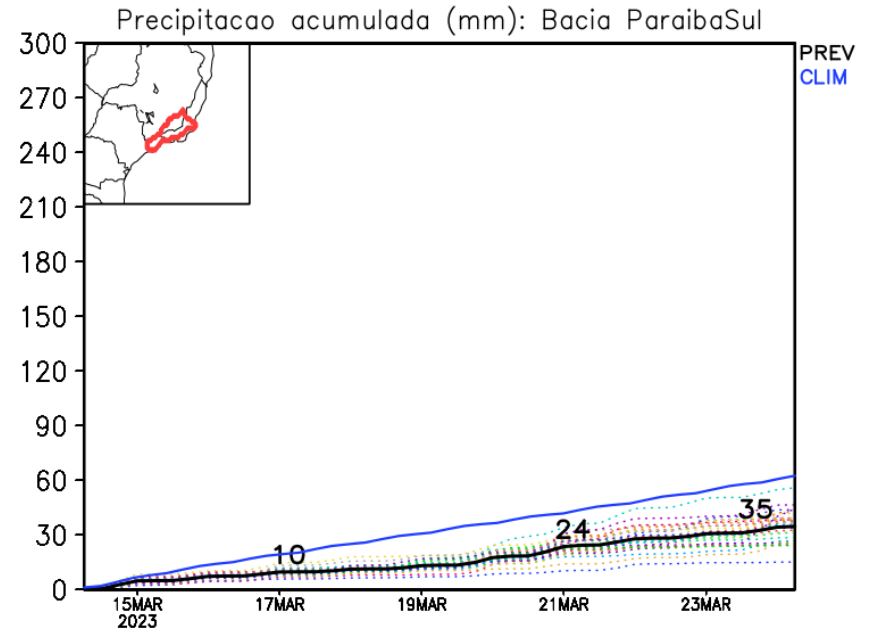
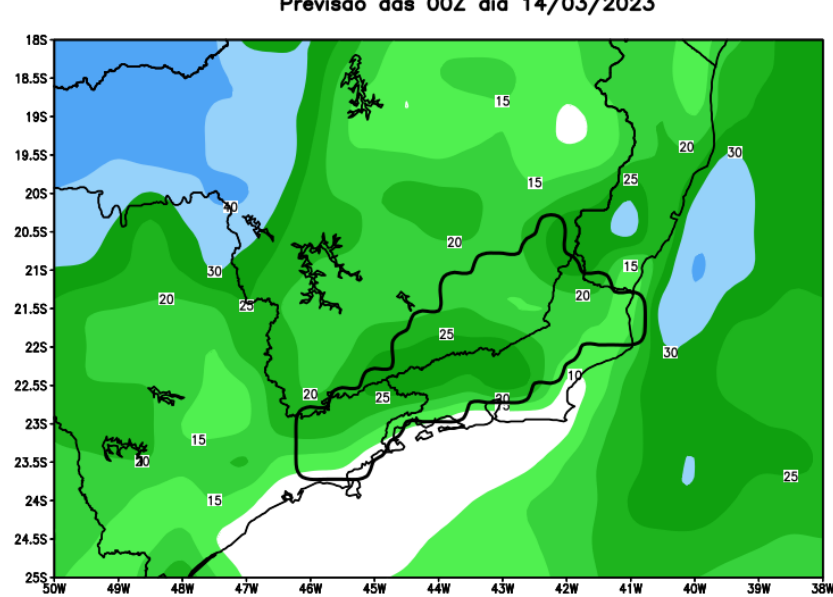


Anomalia de Precipitacao BR_SE (mm)
Periodo: 2023031400 a 2023032100



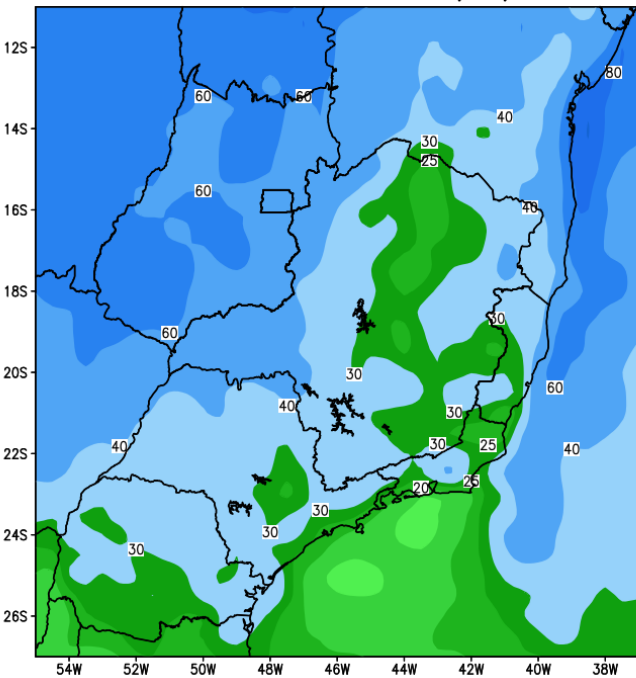
Rio Paraíba do Sul

GEFS / Bacia do Rio Paraíba do Sul
Precipitacao acumulada em 7 dias (mm)
Previsao das 00Z dia 14/03/2023

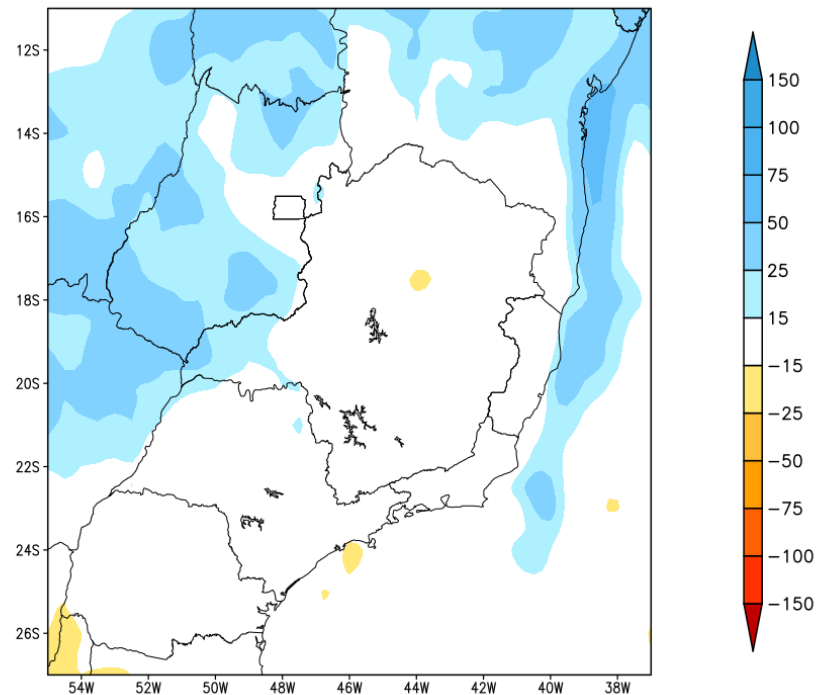


Tendência para a segunda semana

GEFS / BRASIL_SE
Precipitacao acumulada 2aSem (mm)
Previsao das 00Z dia 14/03/2023

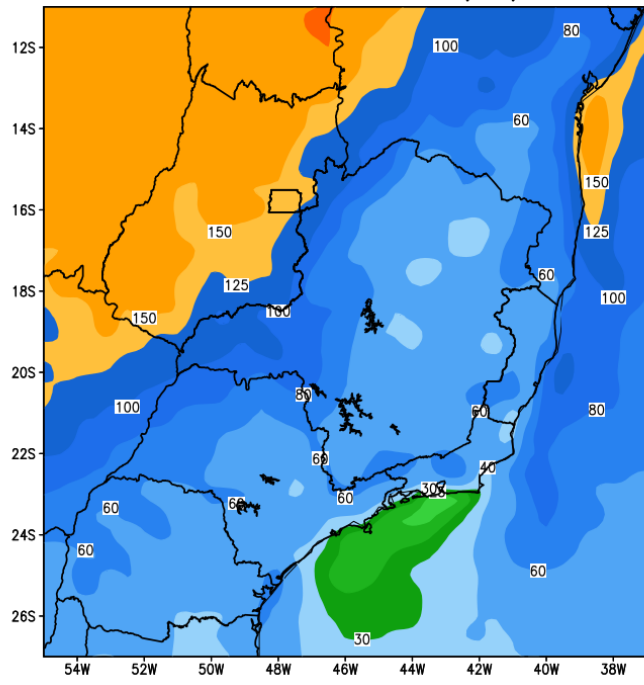


Anomalia de Precipitacao BR_SE (mm)
Periodo: 2023032200 a 2023032800

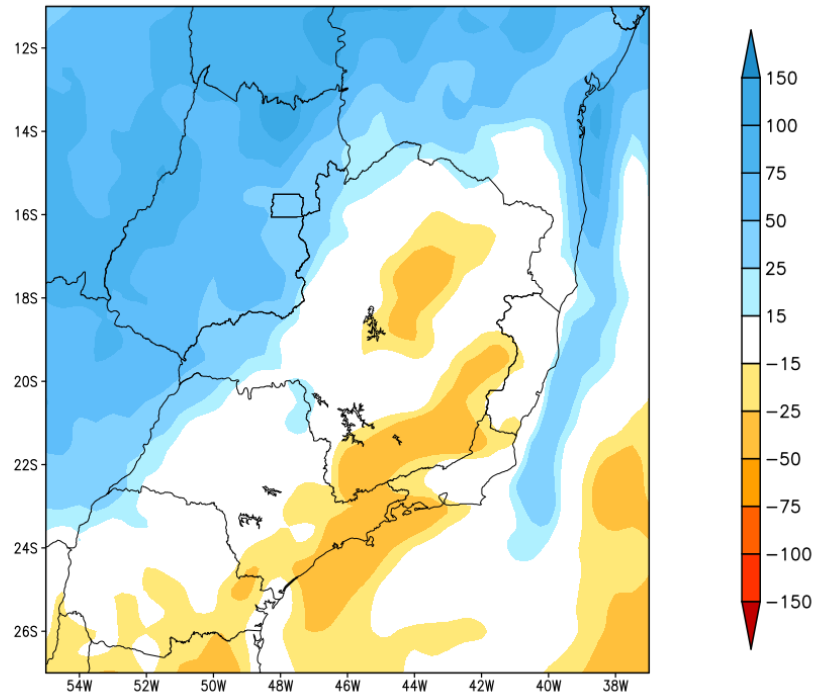


Tendência para as próximas duas semanas

GEFS / BRASIL_SE
Precipitacao acumulada 14dias (mm)
Previsao das 00Z dia 14/03/2023



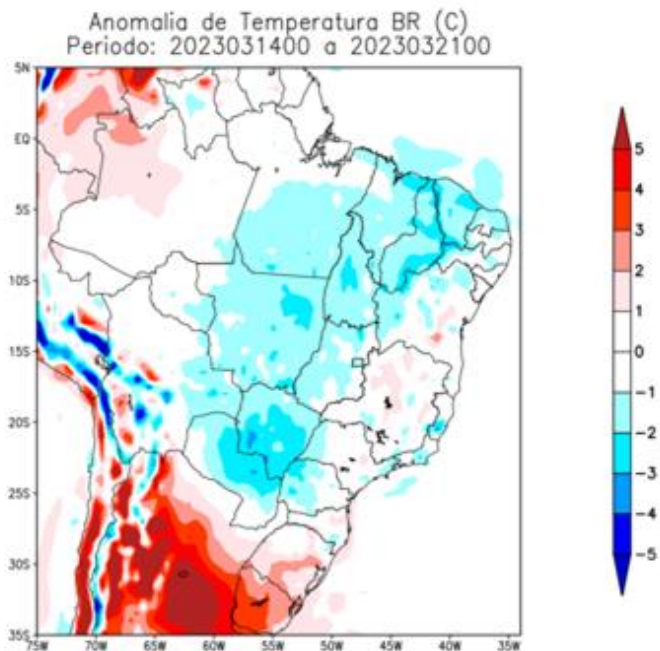
Anomalia de Precipitacao BR_SE (mm)
Periodo: 2023031400 a 2023032800



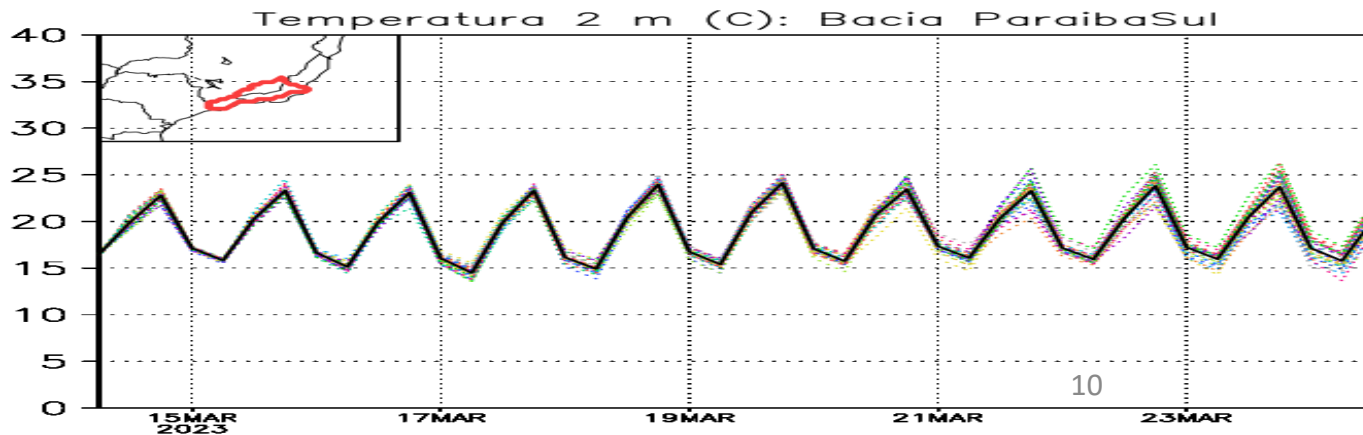
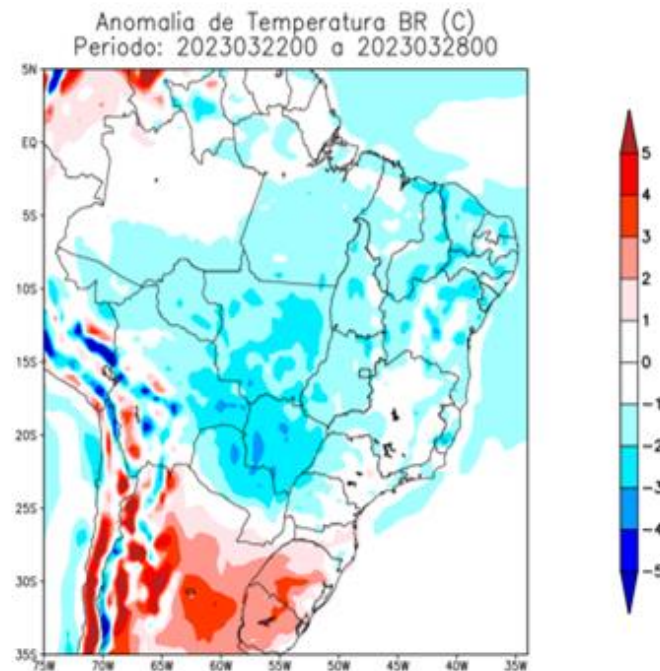
Fonte: GFS/NOAA

Previsão de Temperatura para as próximas duas semanas

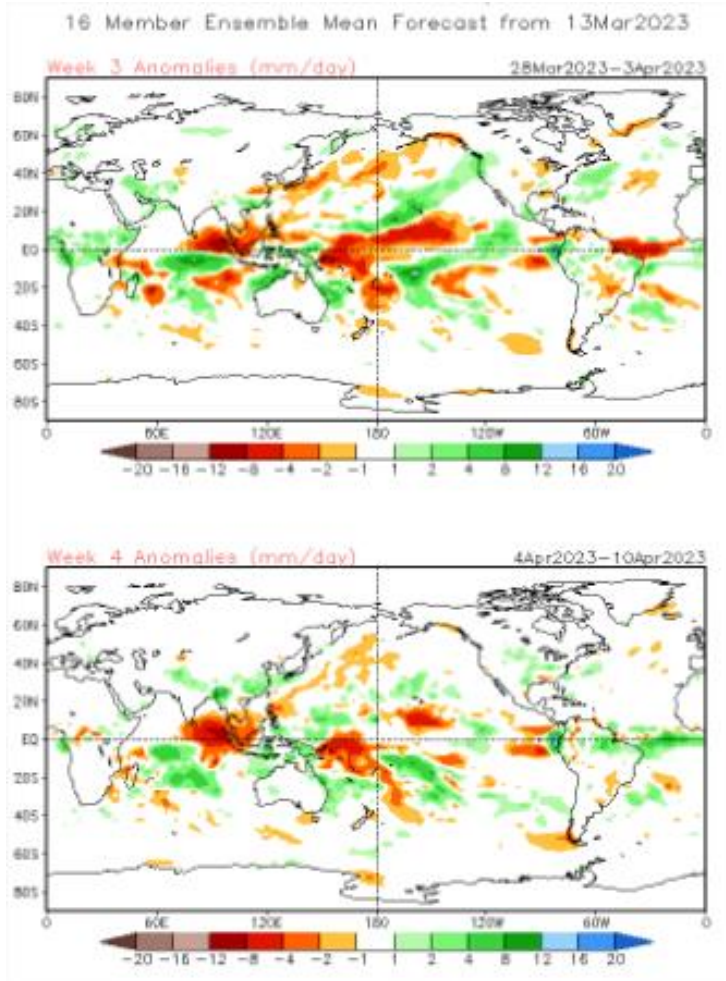
1ª Semana



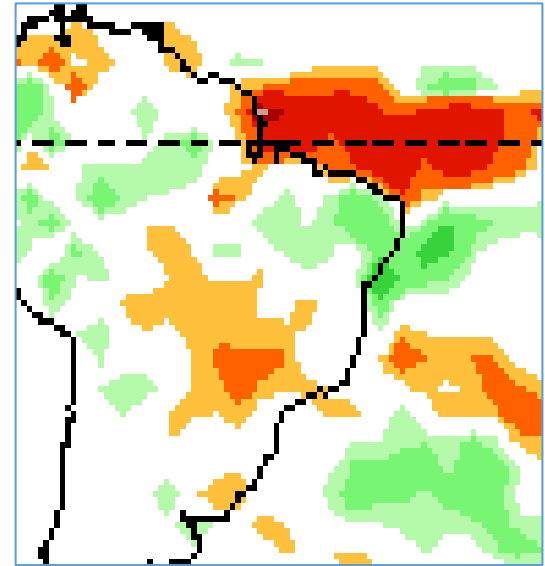
2ª Semana



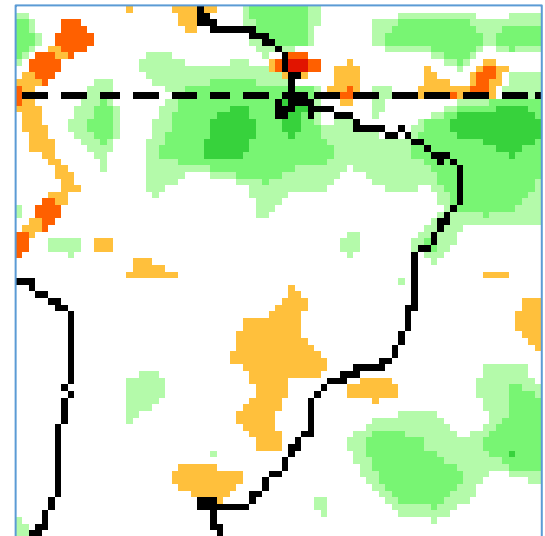
Tendência 3a e 4a semanas



28 Mar - 03/Abr

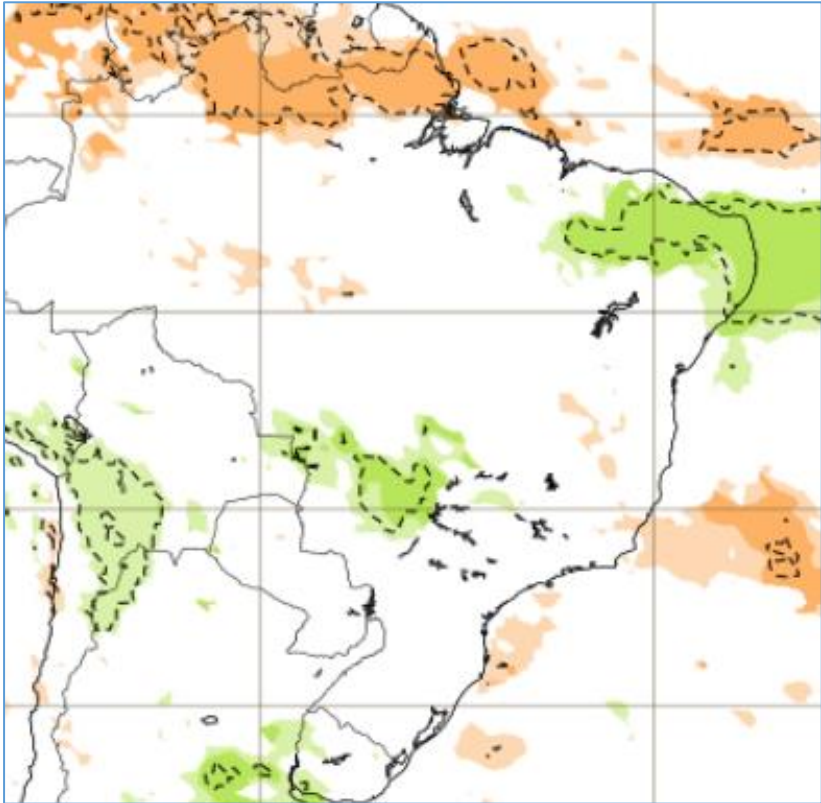


04/Abr - 10/Abr



Tendência para 3ª e 4ª semanas

27/Mar - 02/Abr



03 - 10/Abr

