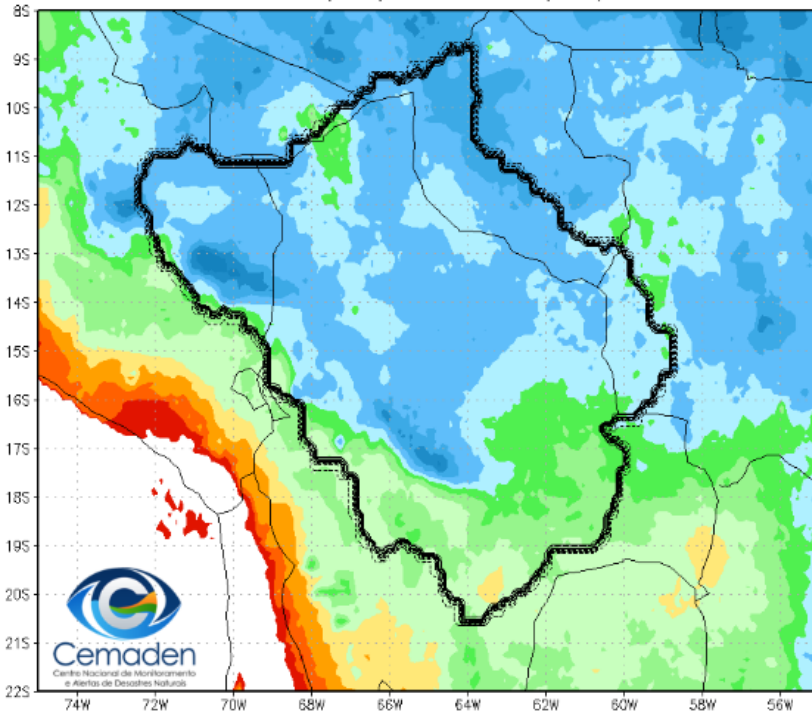


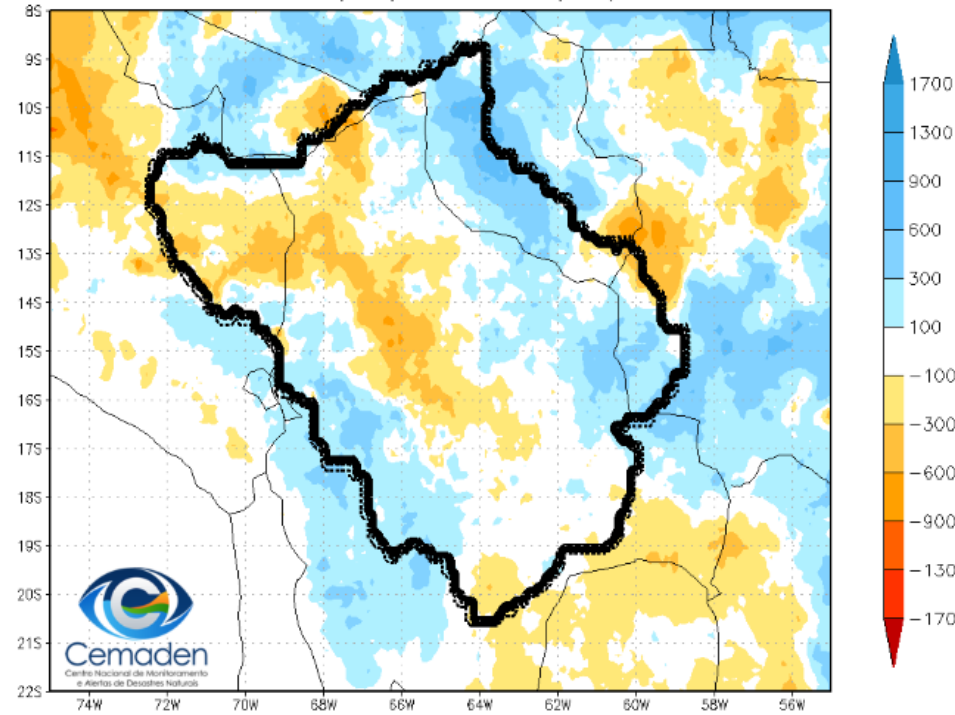
Diagnóstico e Previsões Meteorológicas e Hidrológicas para a Bacia do Rio Madeira

Precipitação Acumulada no Ano Hidrológico

Precipitação Acumulada (mm)
Período: 01/10/2021 – 14/07/2022

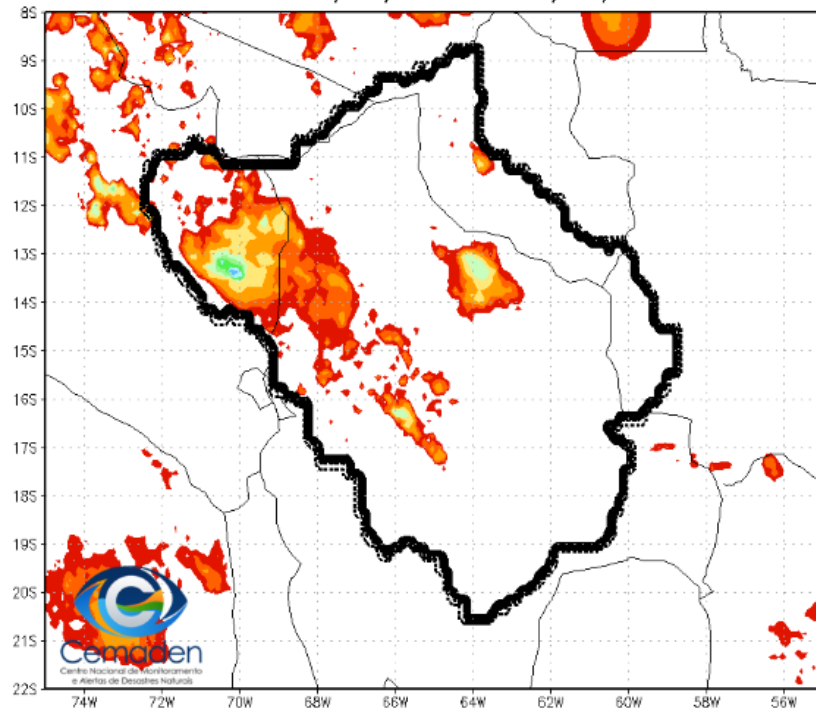


Anomalia de Precipitação Média (mm)
Período: 01/10/2021 – 14/07/2022

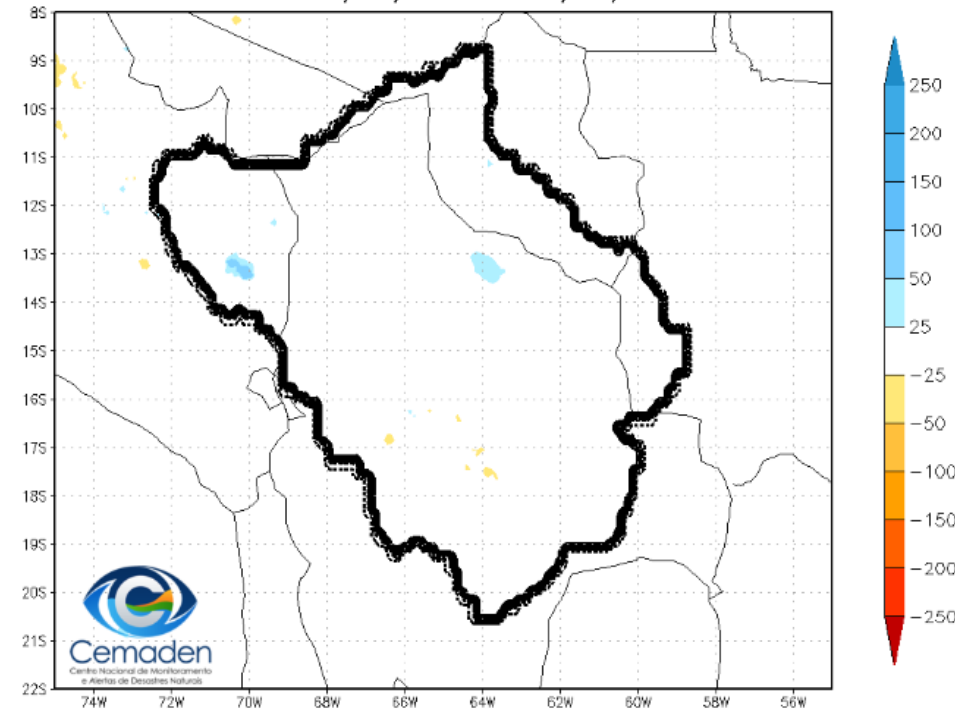


Precipitação Acumulada em Julho

Precipitação Acumulada (mm)
Período: 01/07/2022 – 14/07/2022

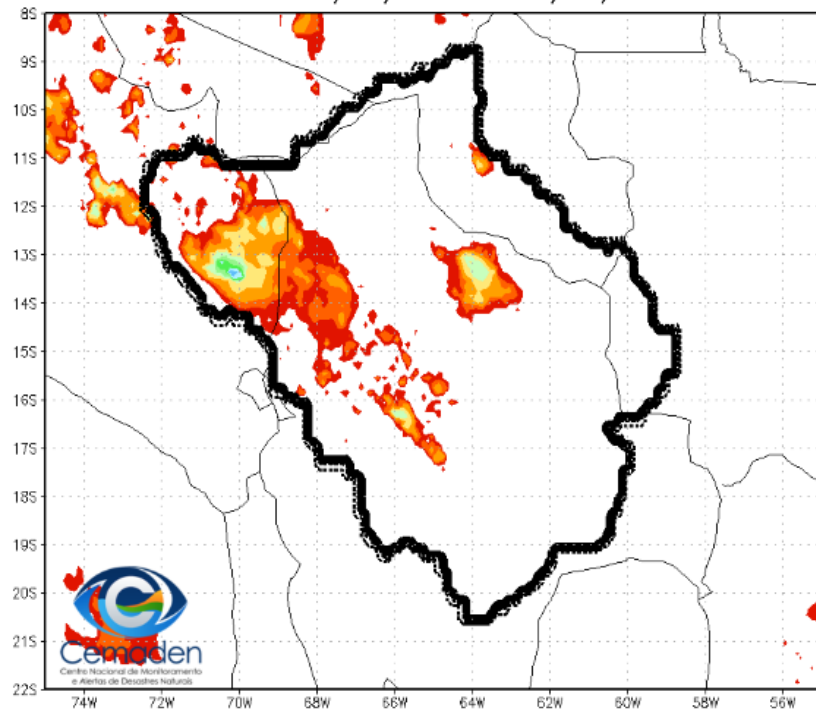


Anomalia de Precipitação Média (mm)
Período: 01/07/2022 – 14/07/2022

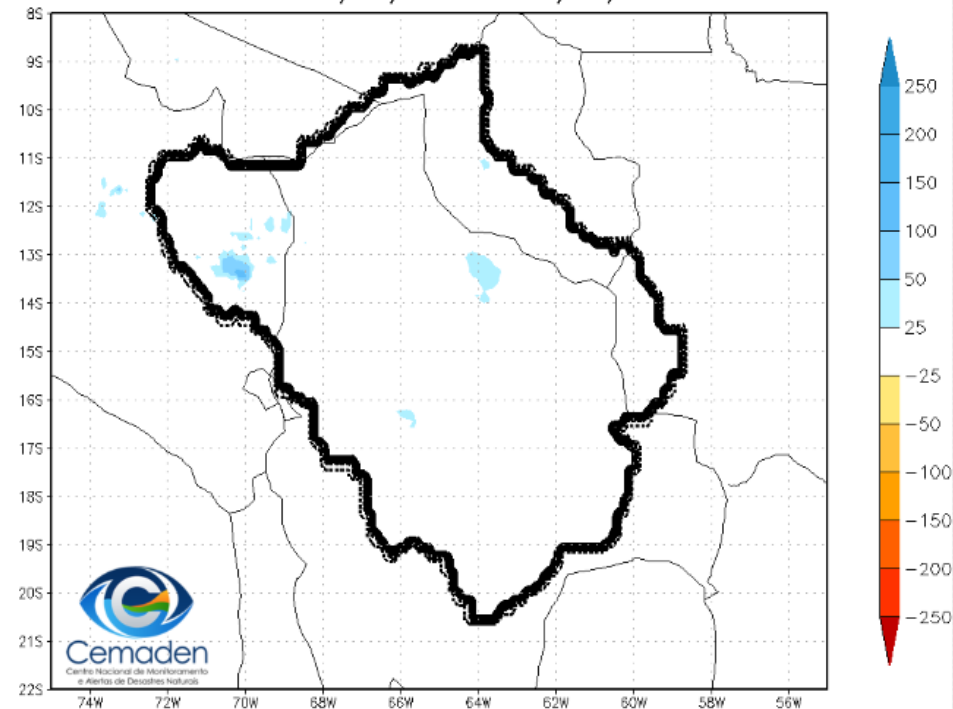


Precipitação Acumulada nos últimos 7 dias

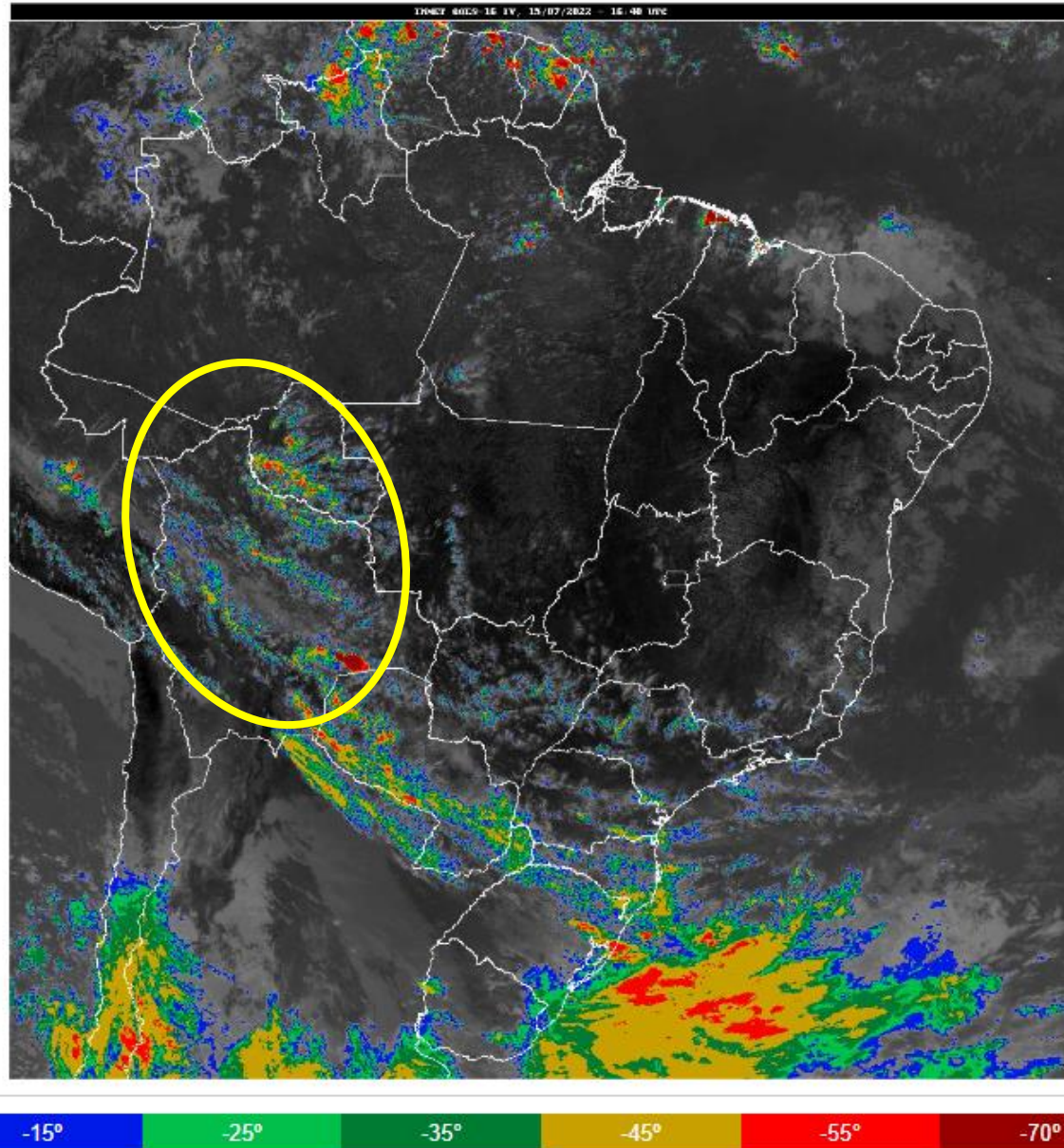
Precipitação Acumulada 7 dias(mm)
Período: 08/07/2022 – 14/07/2022



Anomalia de Precipitação Média 7 dias(mm)
Período: 08/07/2022 – 14/07/2022



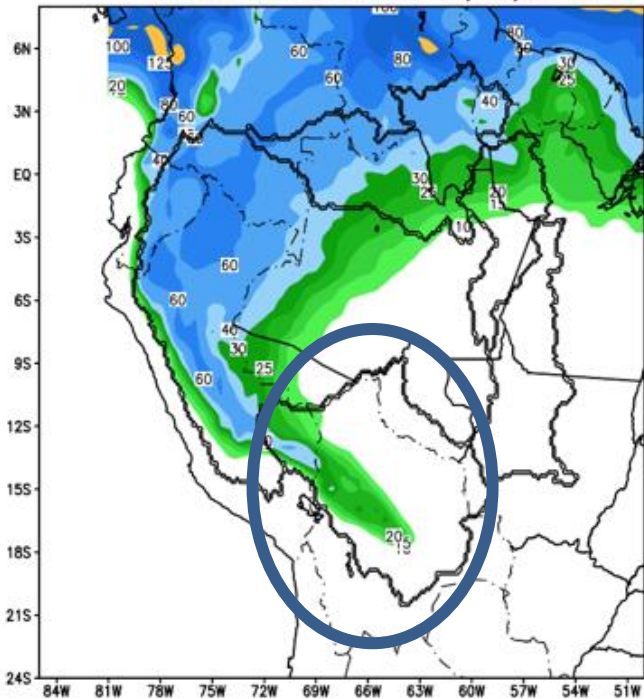
Situação meteorológica atual



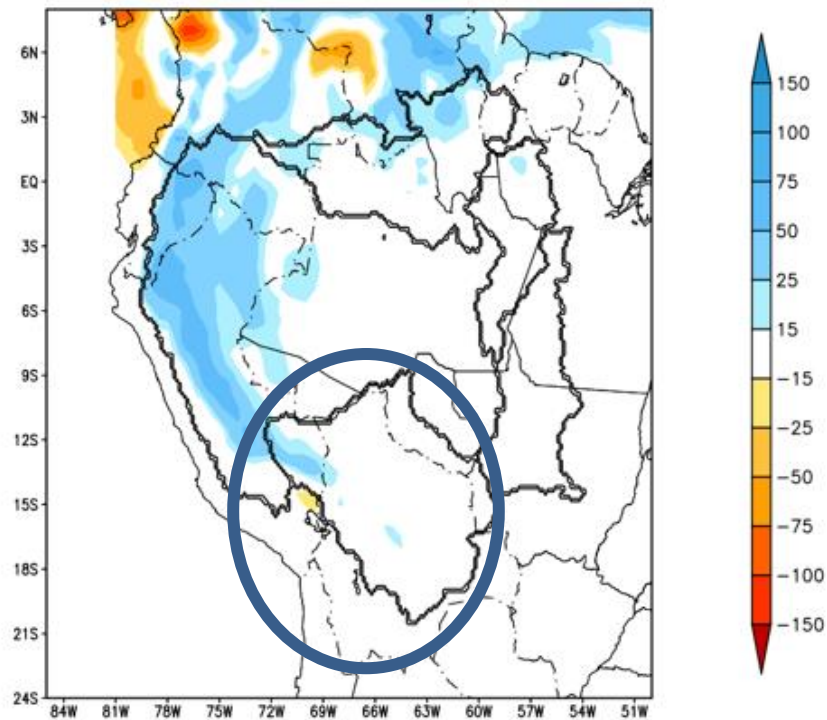
Fonte: INMET

Previsão de chuva para os próximos 7 dias

GEFS / BRASIL_NORTE
Precipitacao acumulada 1aSem (mm)
Previsao das 00Z dia 15/07/2022

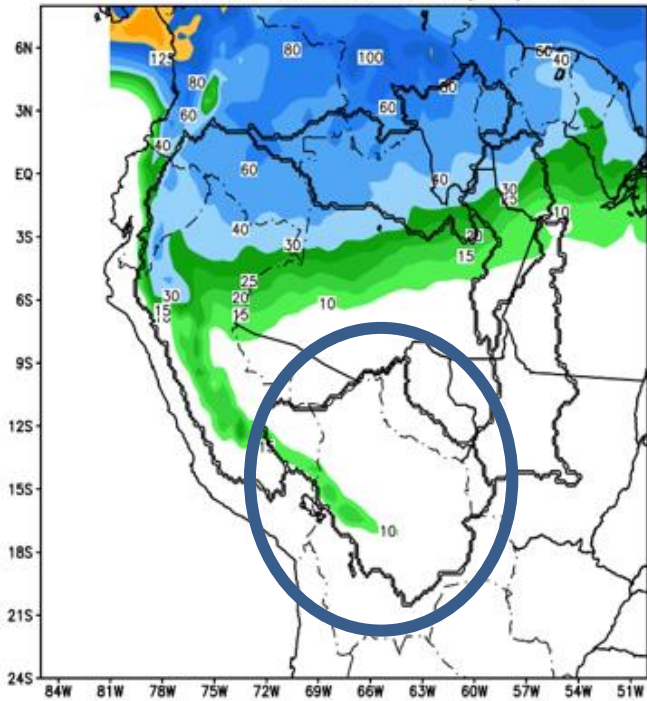


Anomalia de Precipitacao BR NORTE (mm)
Periodo: 2022071500 a 2022072200

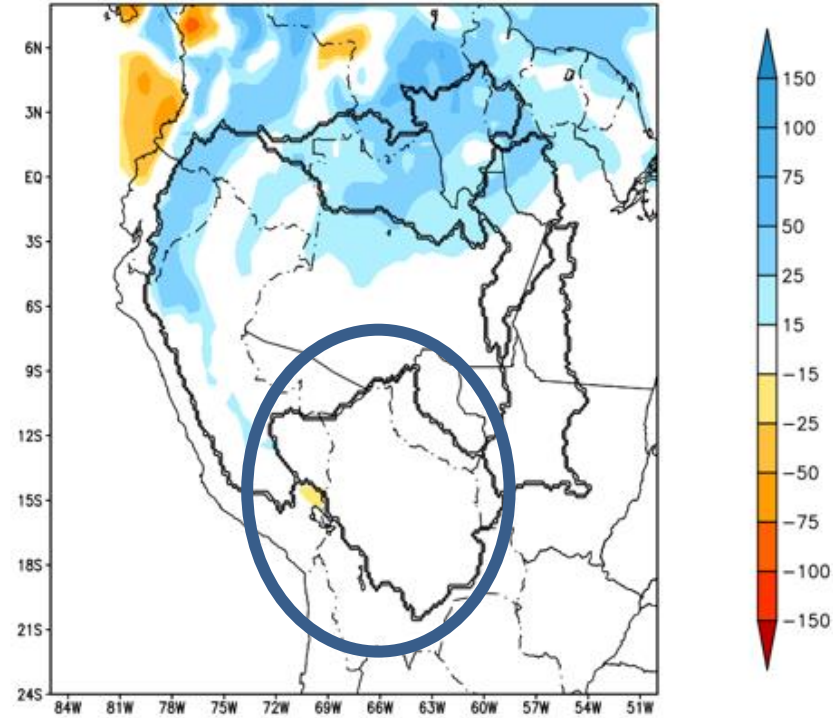


Tendência para a Segunda Semana

GEFS / BRASIL_NORTE
Precipitacao acumulada 2aSem (mm)
Previsao das 00Z dia 15/07/2022

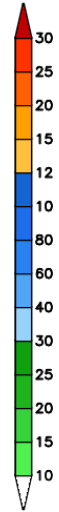
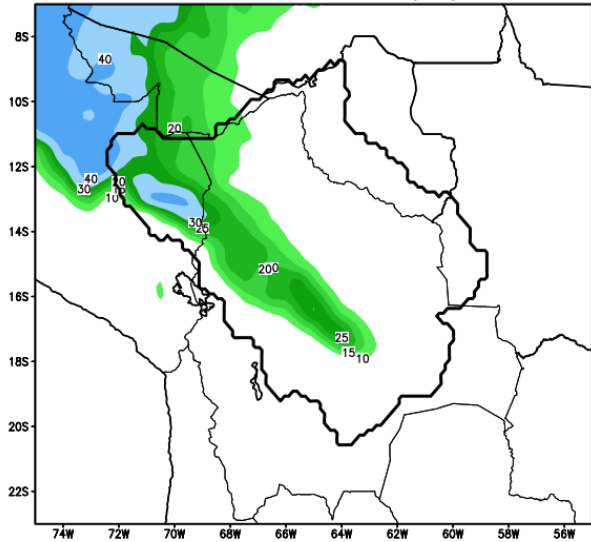


Anomalia de Precipitacao BR NORTE (mm)
Periodo: 2022072300 a 2022072900

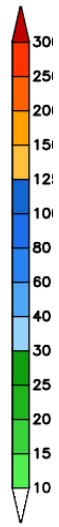
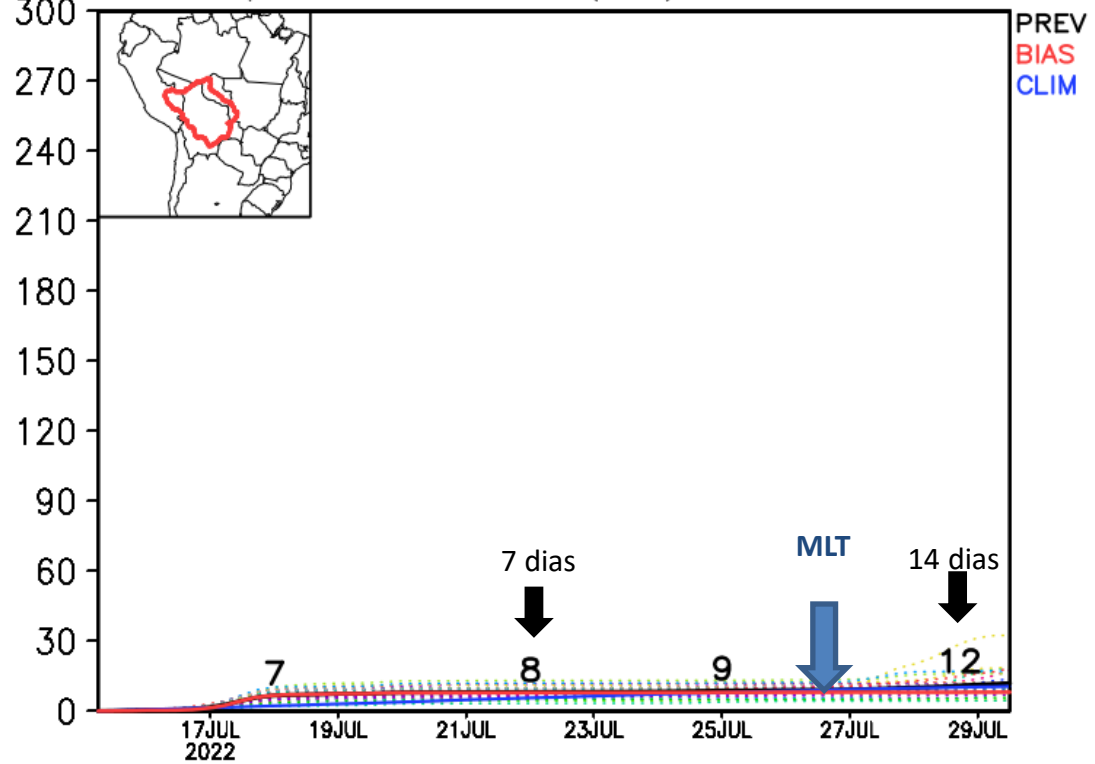


Previsão de chuva para o Rio Madeira

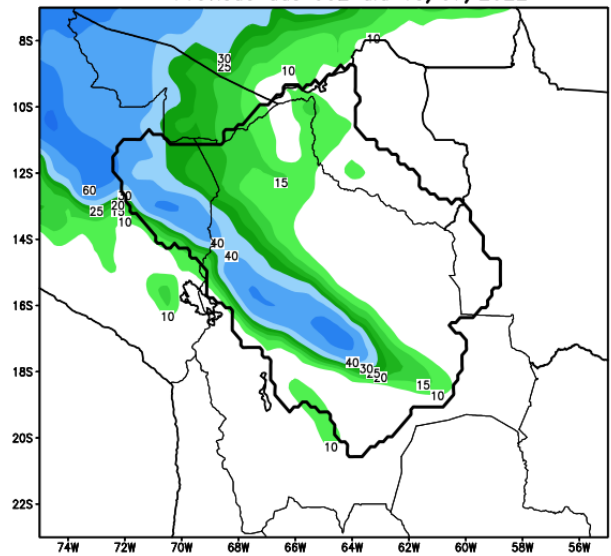
GEFS_BC / Bacia do Rio Madeira
 Prec. acumulada com correcao de vies em 7 dias (mm)
 Previsao das 00Z dia 15/07/2022



Precipitacao acumulada (mm): Bacia Madeira



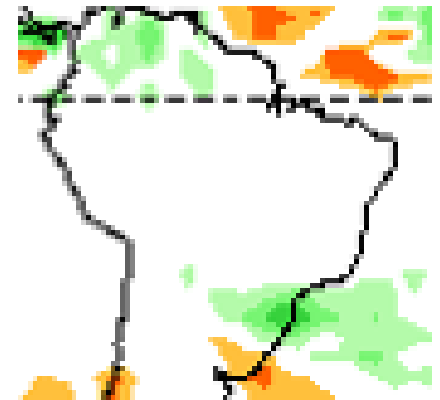
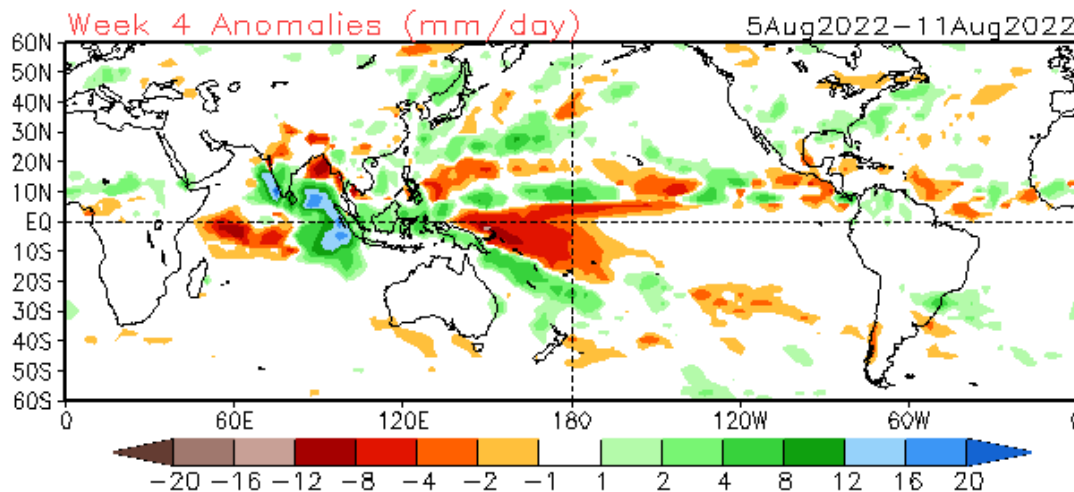
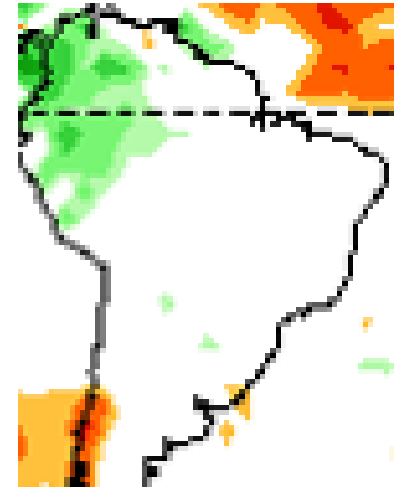
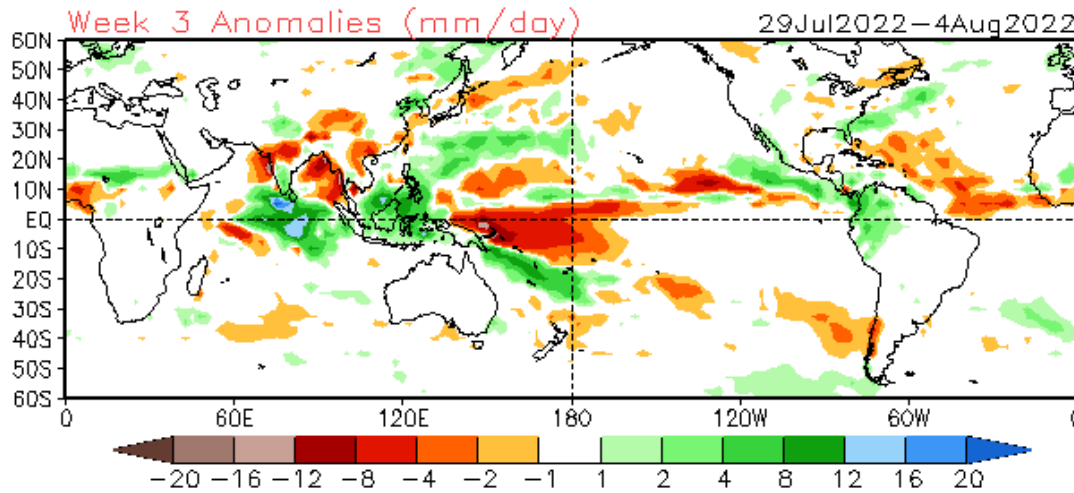
GEFS_BC / Bacia do Rio Madeira
 Prec. acumulada com correcao de vies em 14 dias (mm)
 Previsao das 00Z dia 15/07/2022



Tendência 3a e 4a semanas

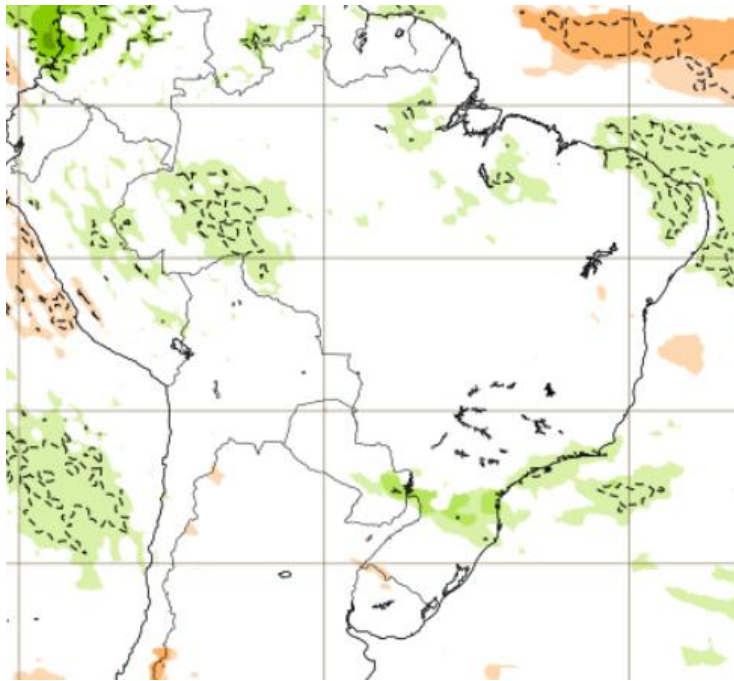
CFSv2 Weeks 3 & 4 Precipitation

16 Member Ensemble Mean Forecast from 14Jul2022

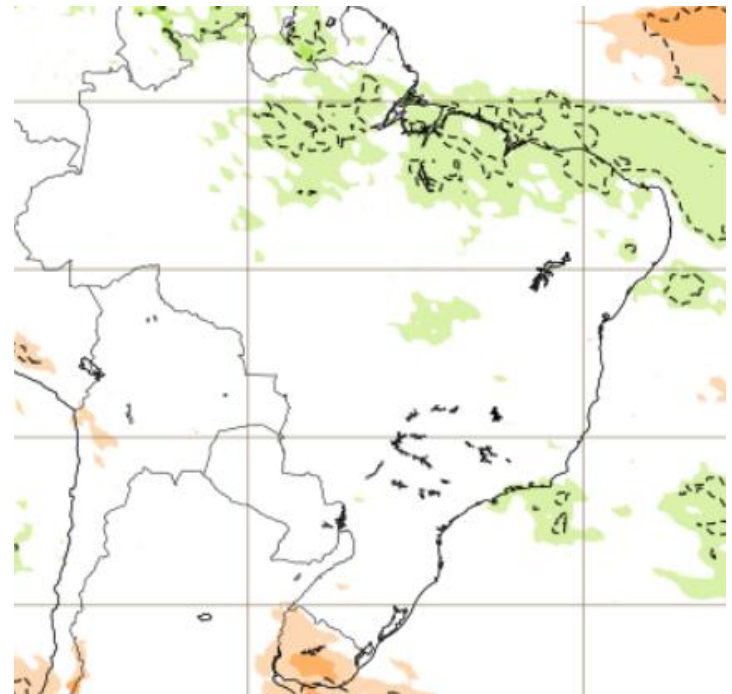


Tendência para 3^a e 4^a semanas

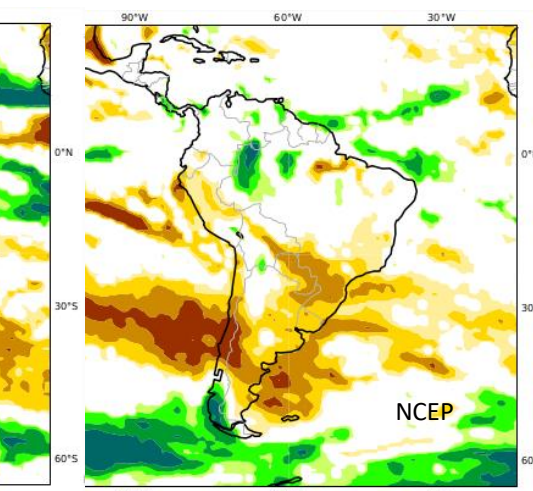
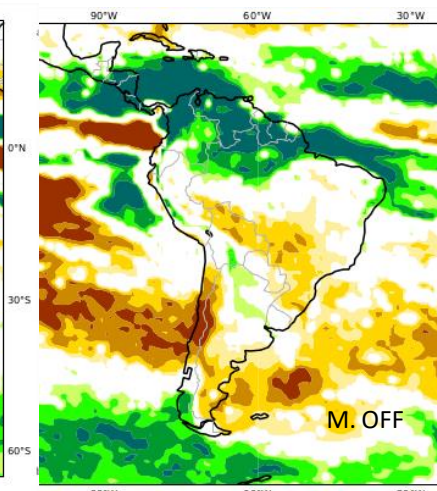
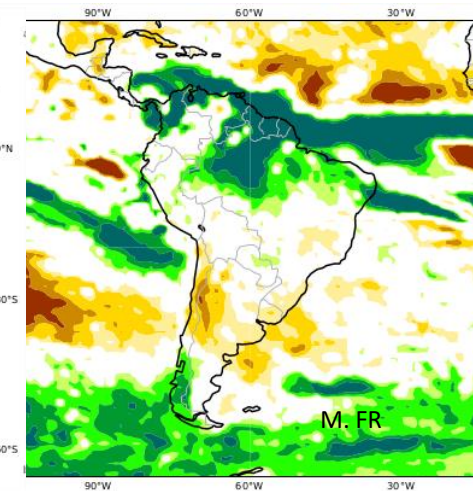
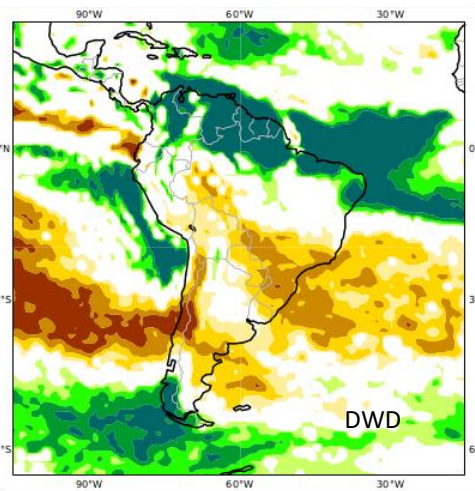
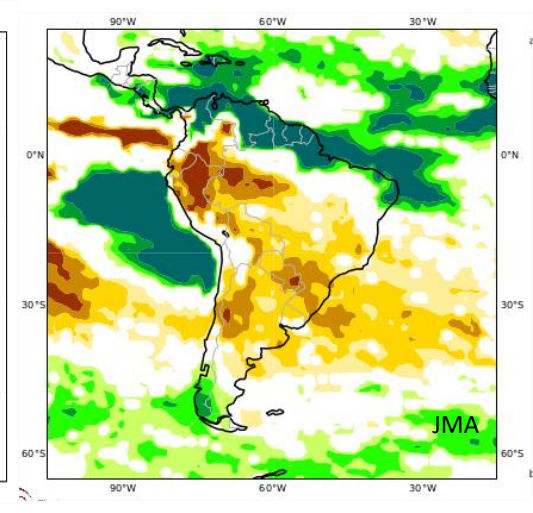
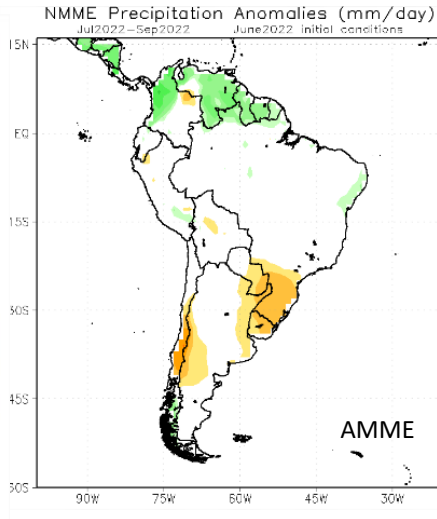
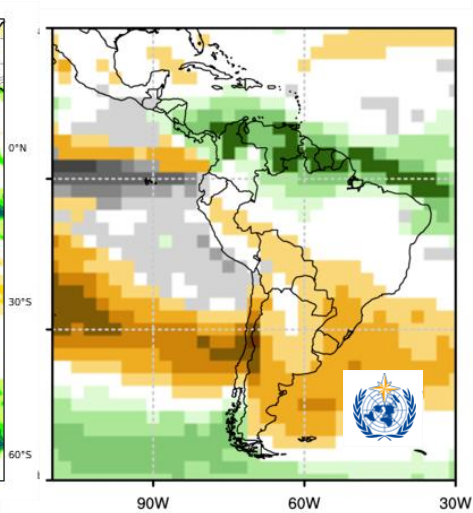
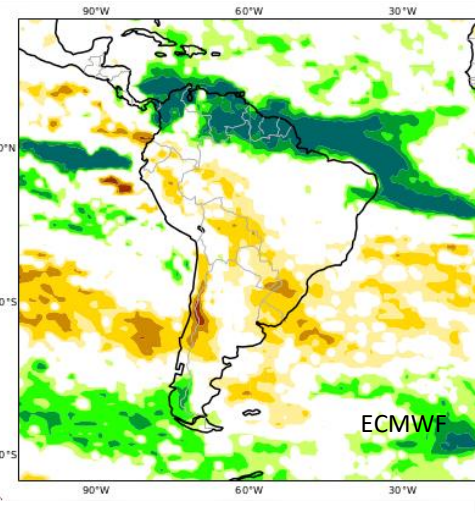
01-07/08



08-15/08

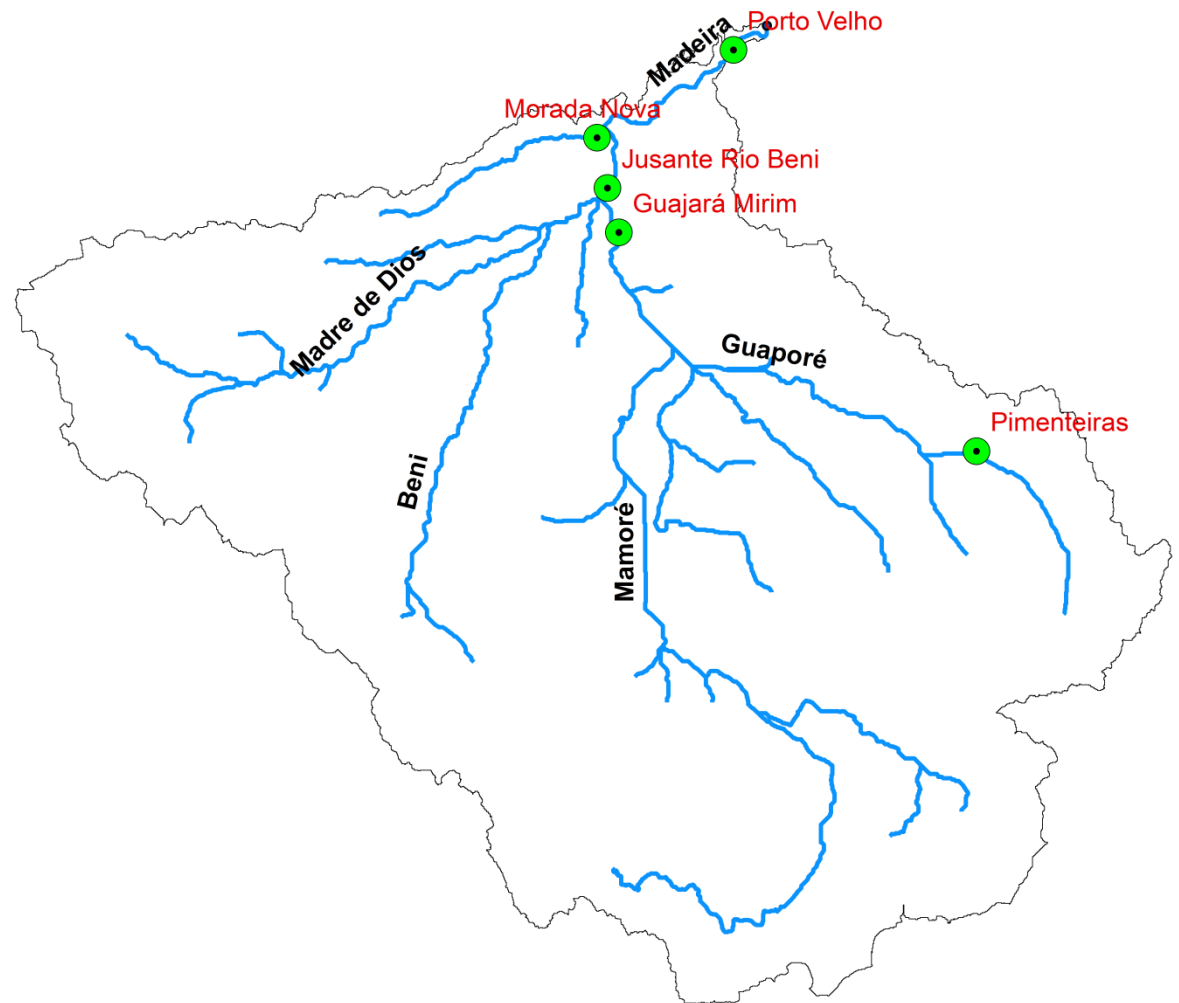


Previsão sazonal de Chuva (JAS)



Previsão Hidrológica: Bacia do Rio Madeira

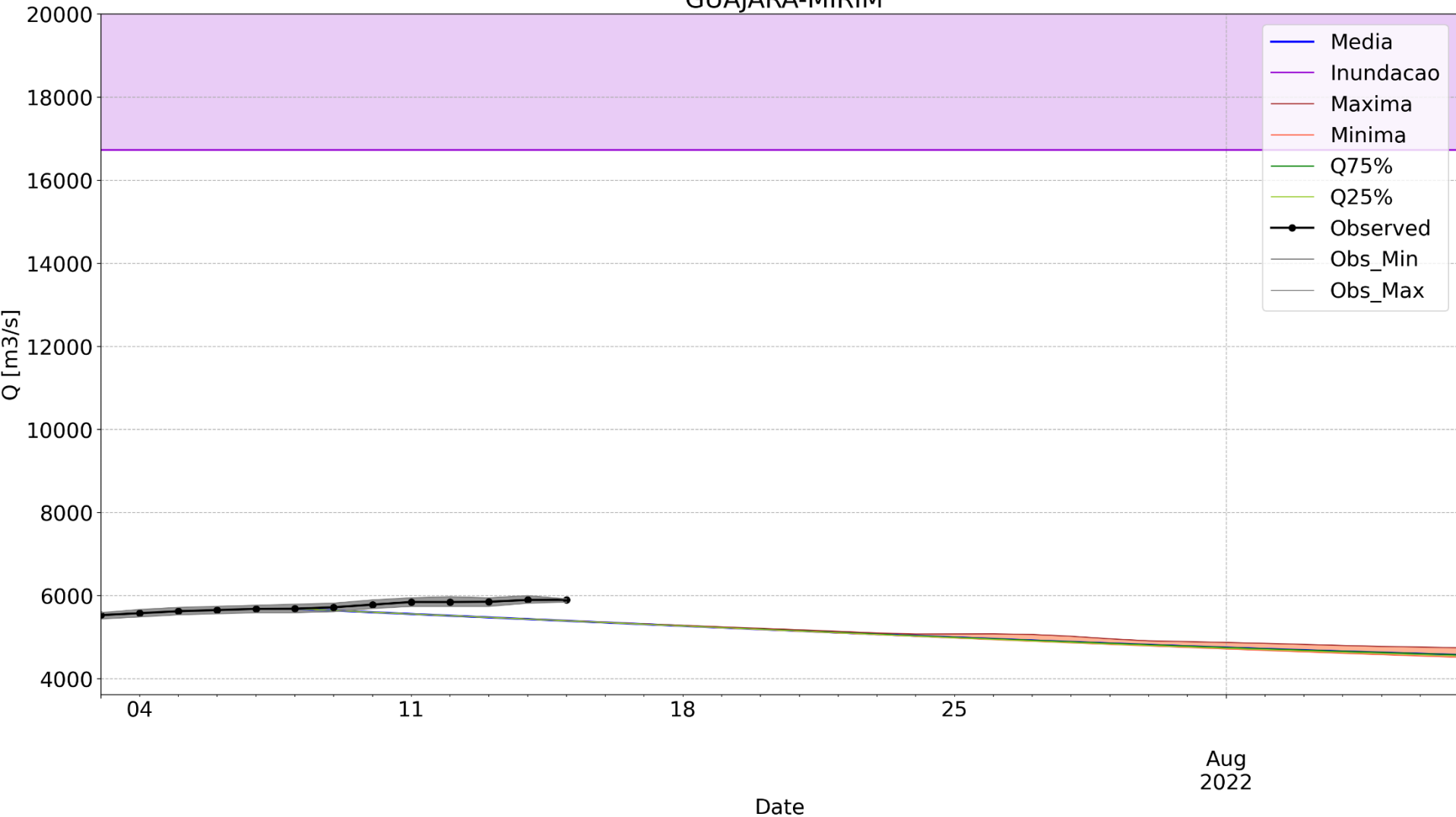
Previsão de vazão realizada por meio do Modelo Hidrológico Distribuído – Lisflood/GLOFAS (Chuva-Vazão), usando como entradas as previsões de precipitação fornecidas pelo modelo por conjunto ECMWF (Centro Europeu)



Análise Previsão: 08/07/2022

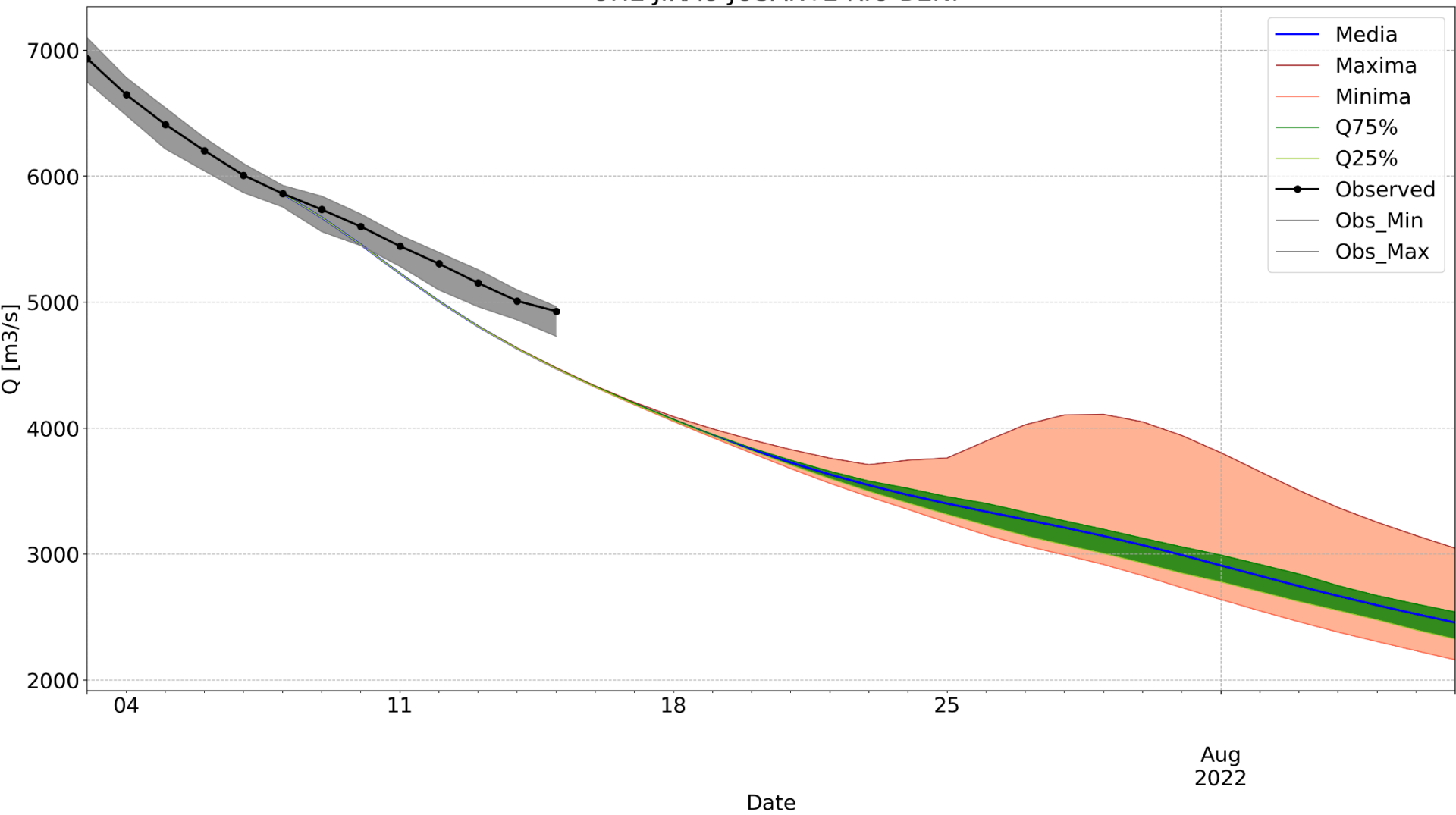
GloFAS Run - 2022070800

GUAJARÁ-MIRIM



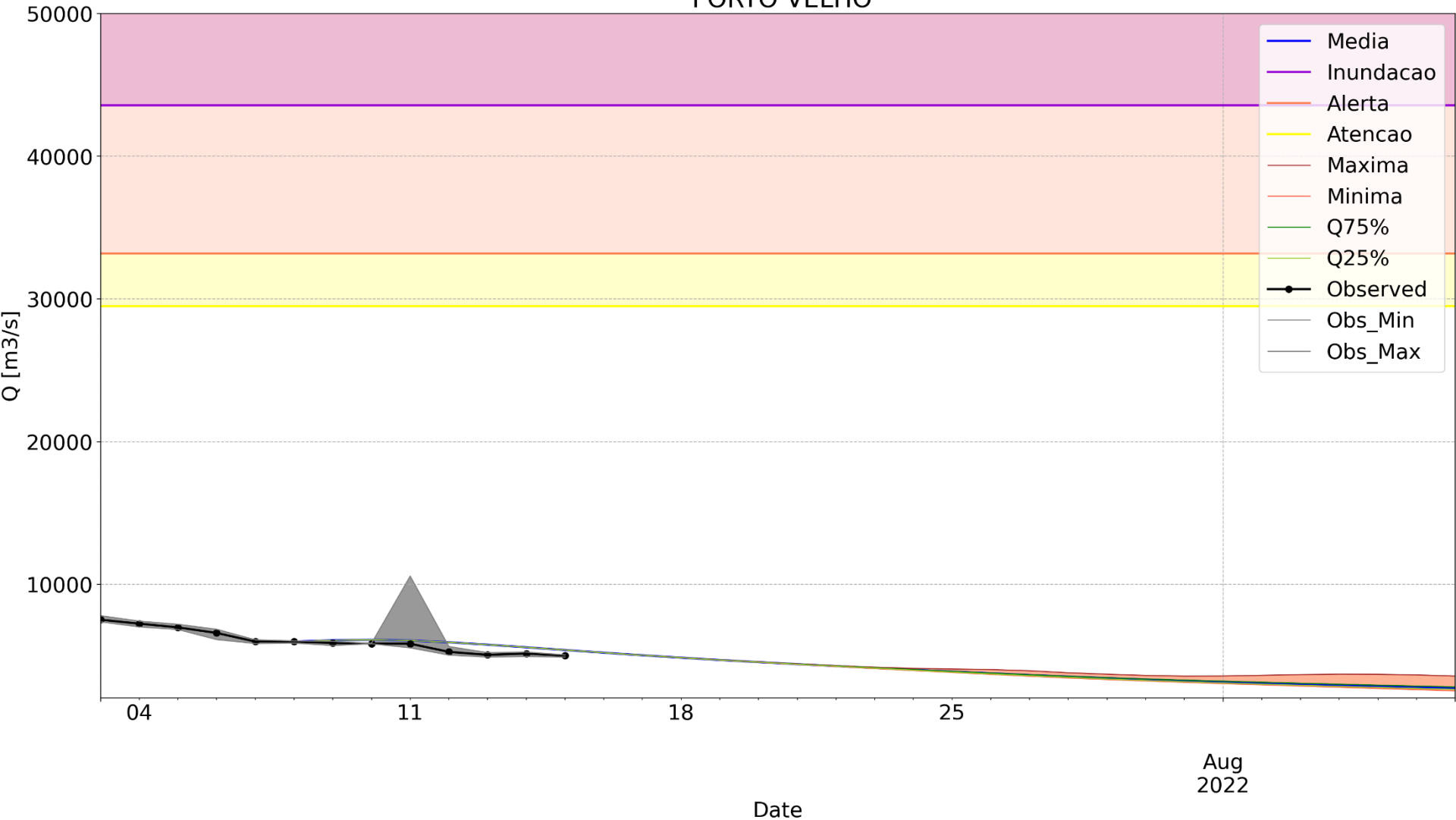
Análise Previsão: 08/07/2022

GloFAS Run - 2022070800
UHE JIRAU JUSANTE RIO BENI



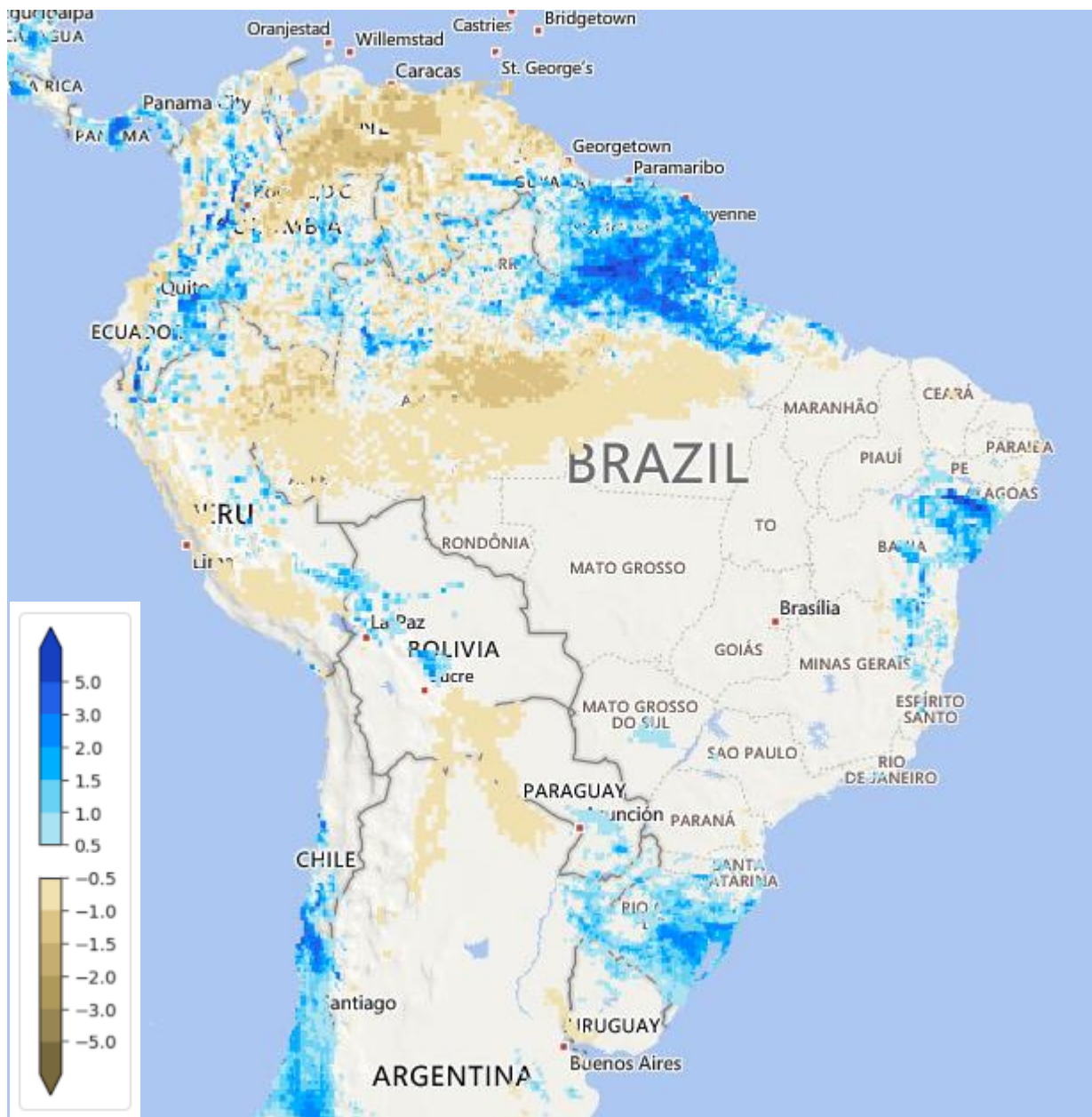
Análise Previsão: 08/07/2022

GloFAS Run - 2022070800
PORTO VELHO



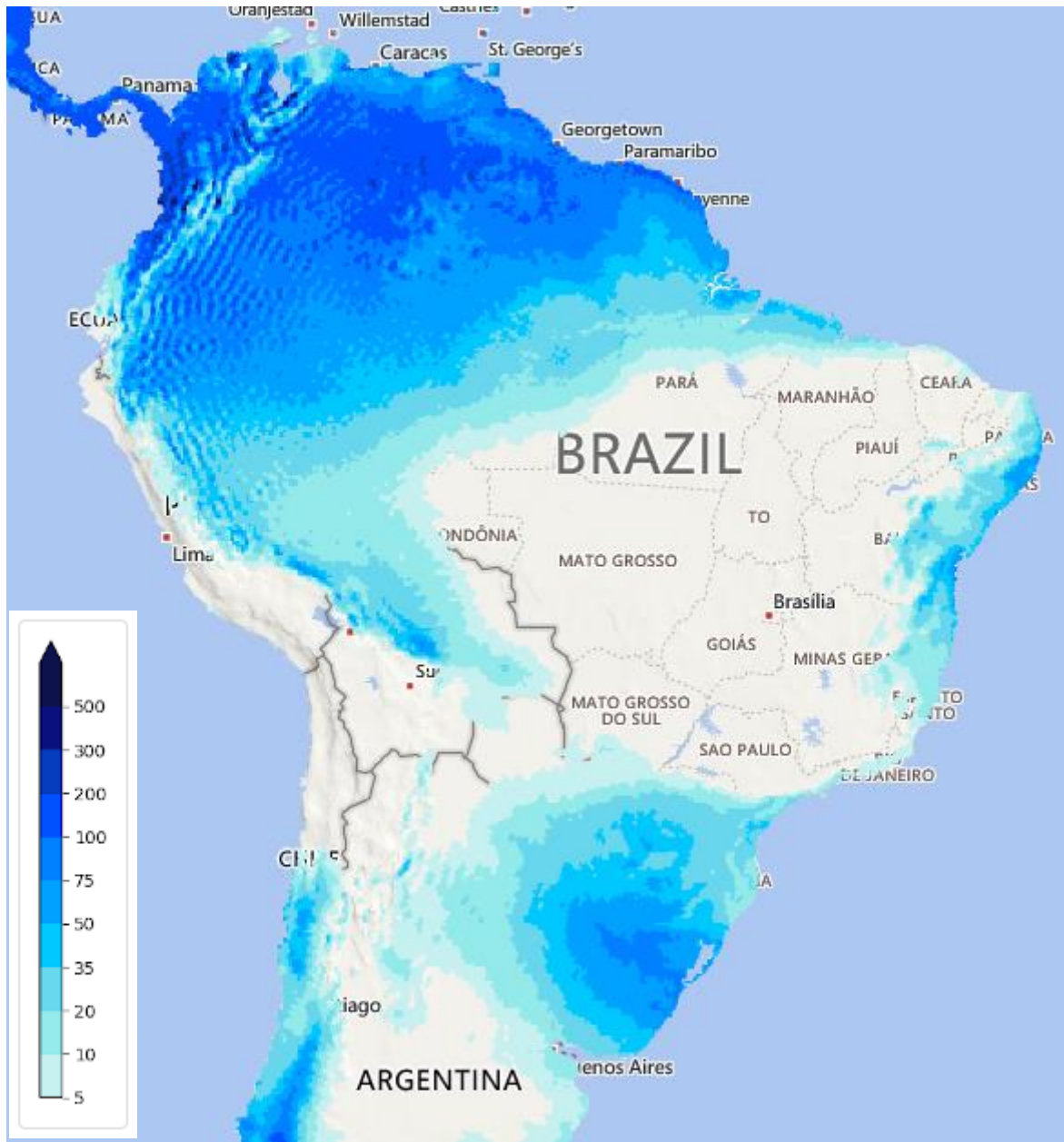
Previsão: ECMWF

Anomalia chuva
acumulada 3
dias (ERA5)



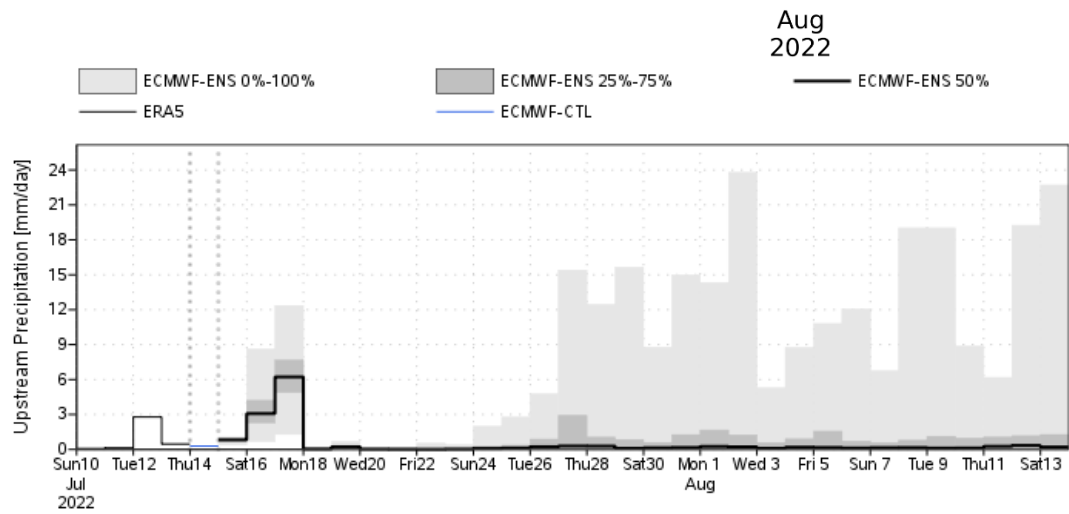
Previsão: ECMWF

Acumulado para
10 dias

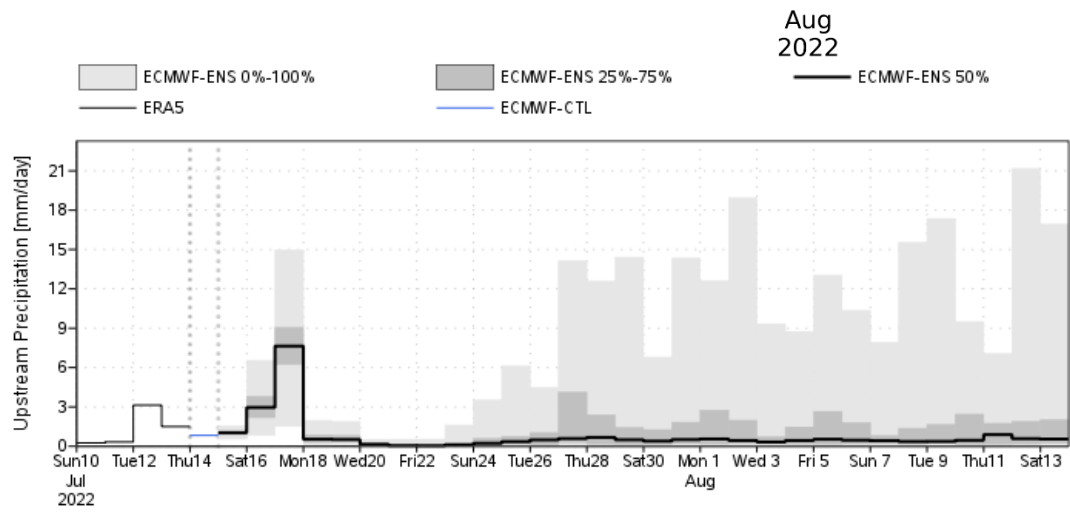
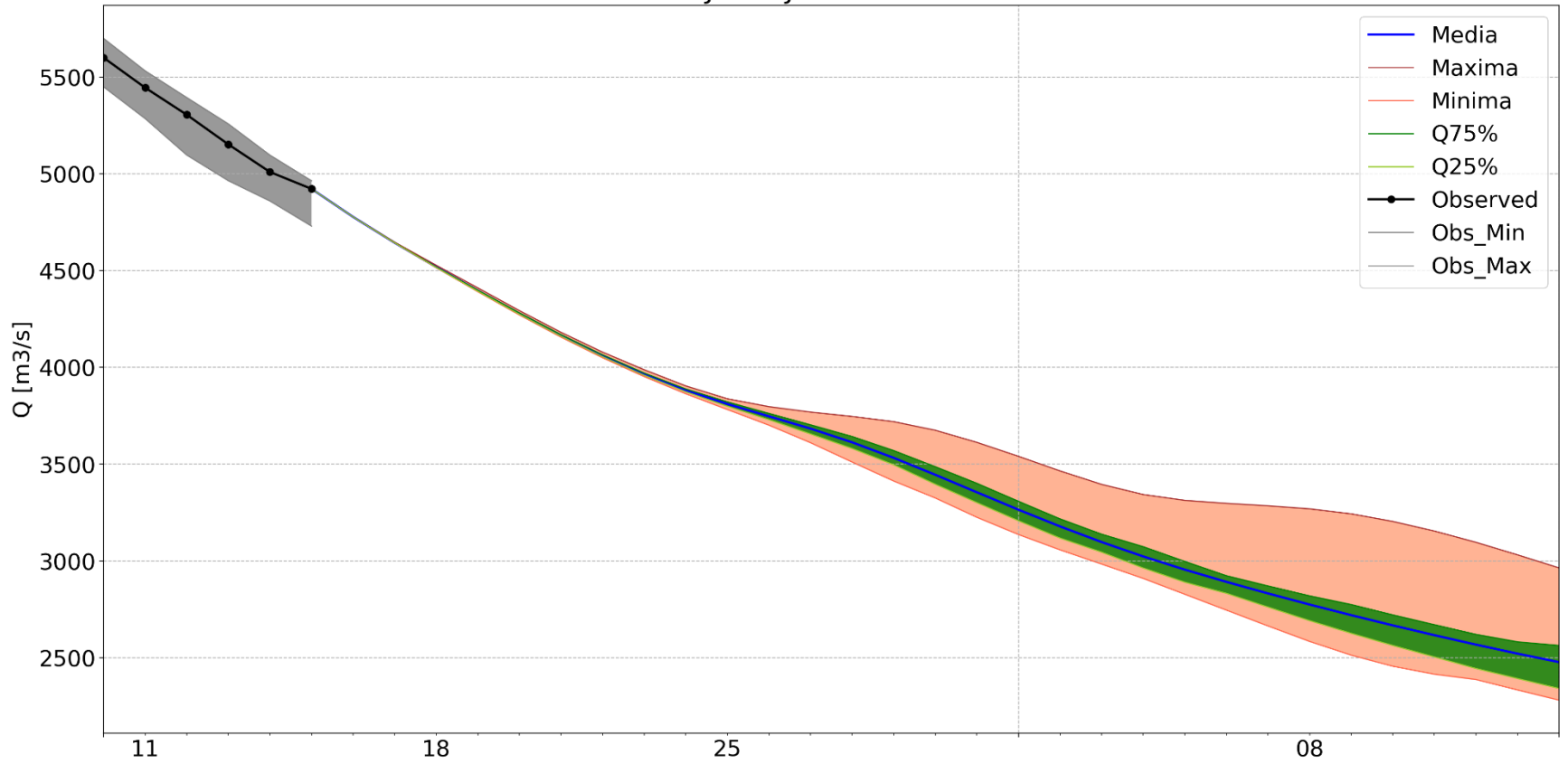


GloFAS Run - 2022071500

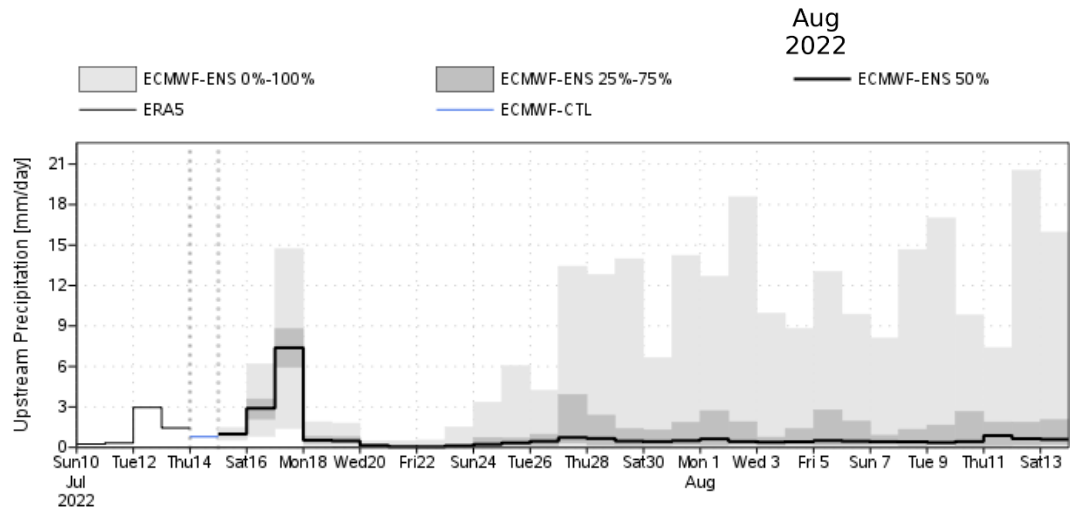
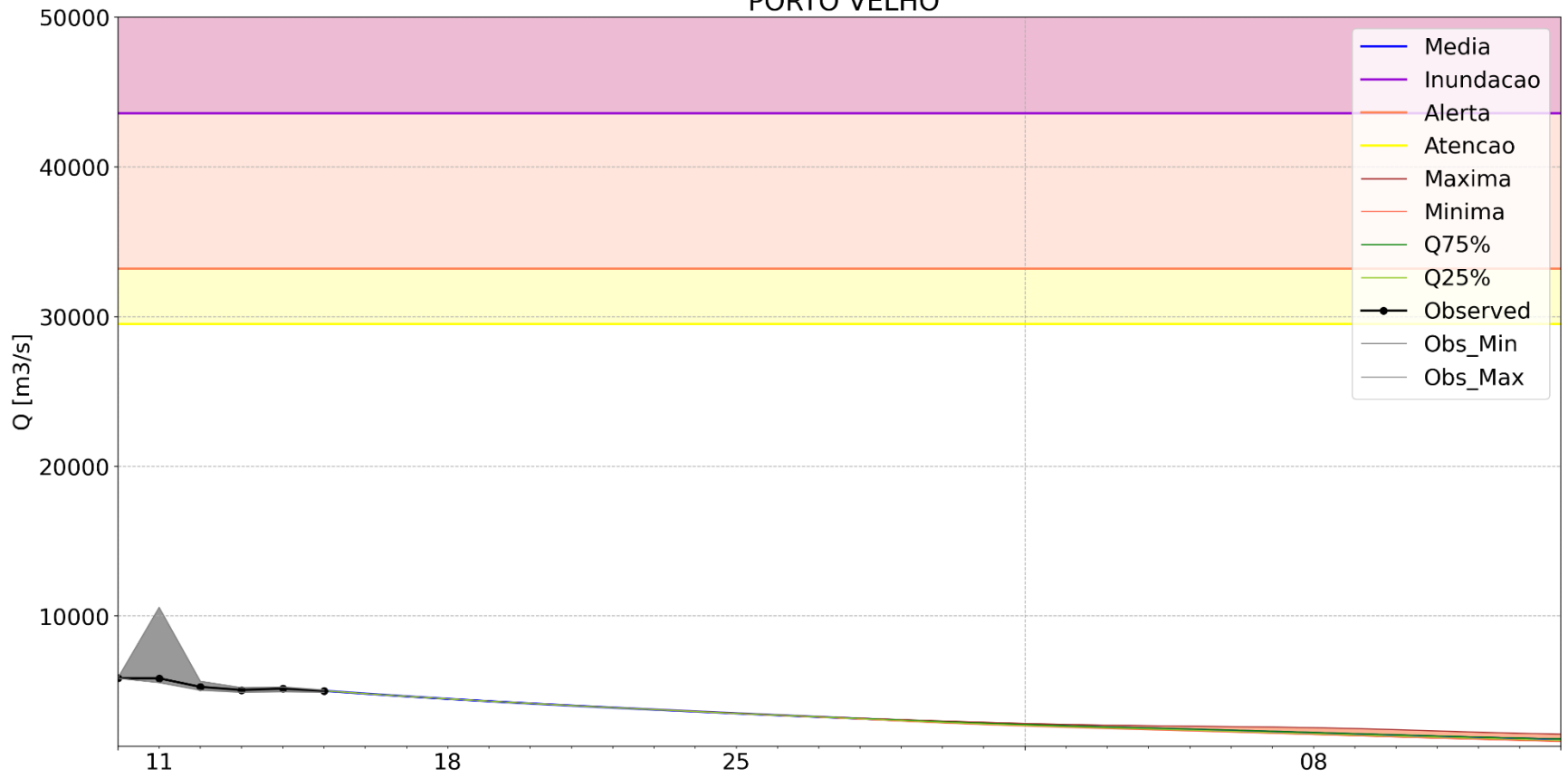
GUAJARÁ-MIRIM



GloFAS Run - 2022071500 UHE JIRAU JUSANTE RIO BENI



GloFAS Run - 2022071500 PORTO VELHO

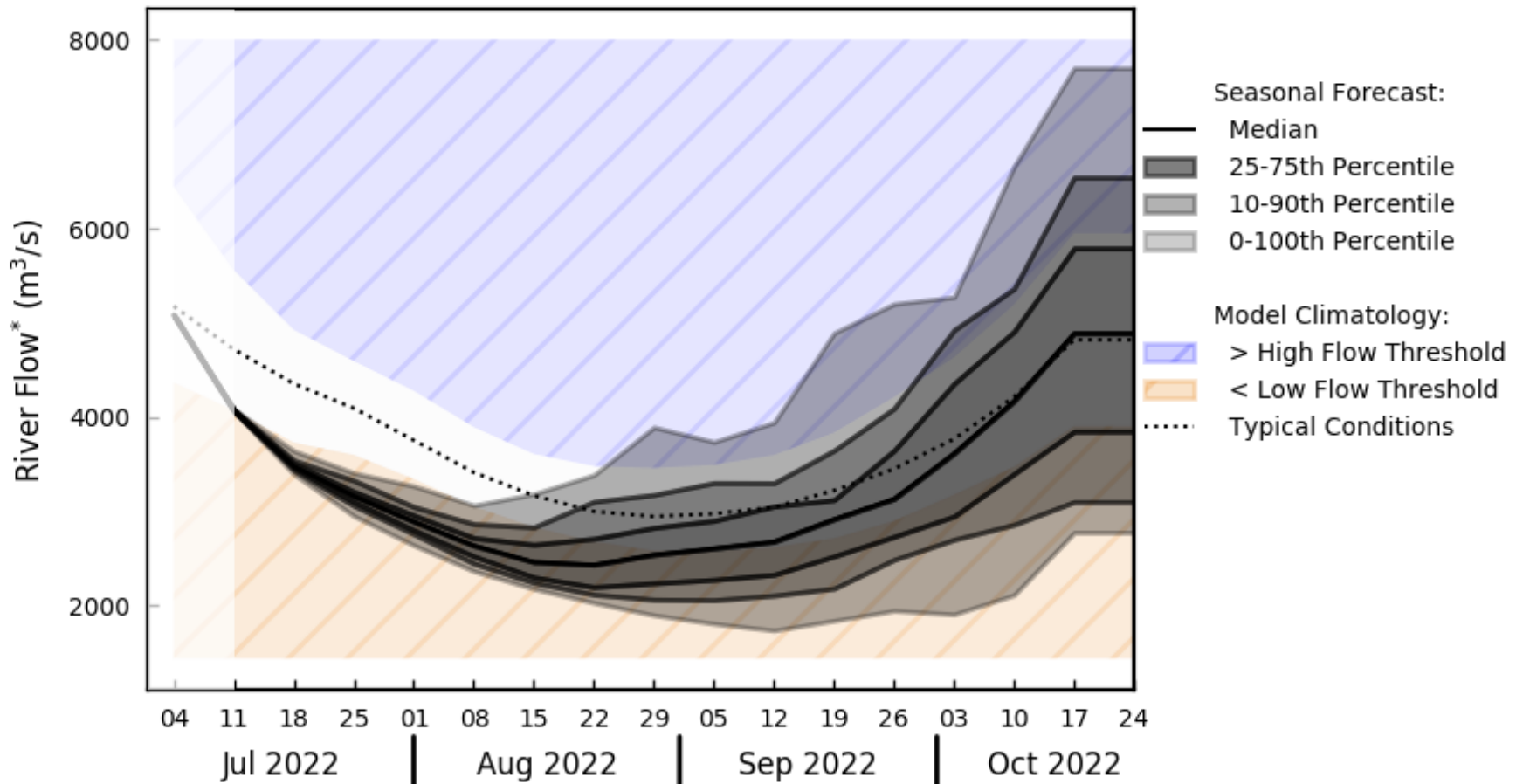


Modelo sazonal para 120 dias



Previsão Sazonal: GLOFAS

Cachuela Esperanza

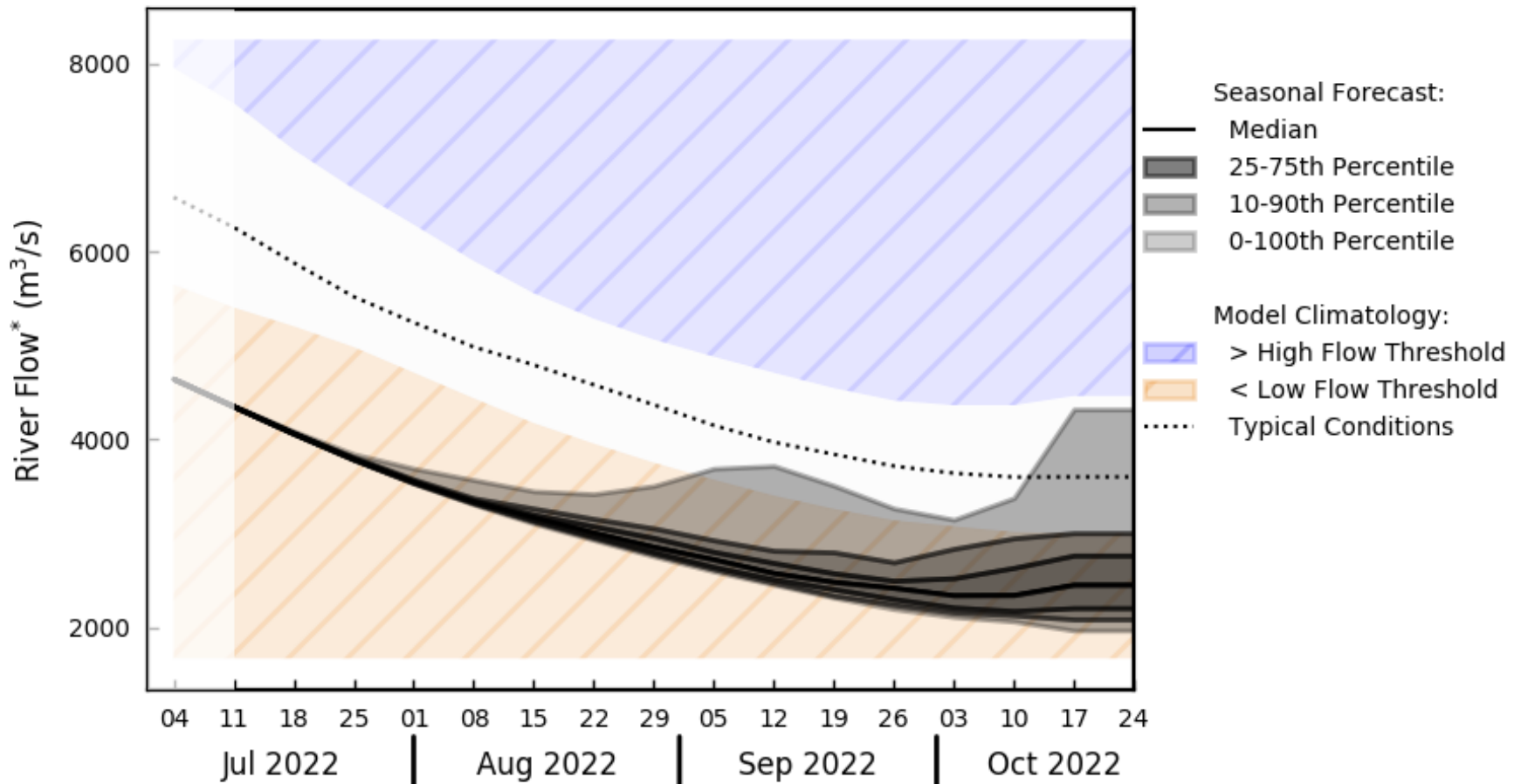


*River flow is a weekly average, displayed at start of week (dates shown)

** High and low flow thresholds refer to the 80th and 20th percentiles of the model climatology

Previsão Sazonal: GLOFAS

Guajar-Mirim

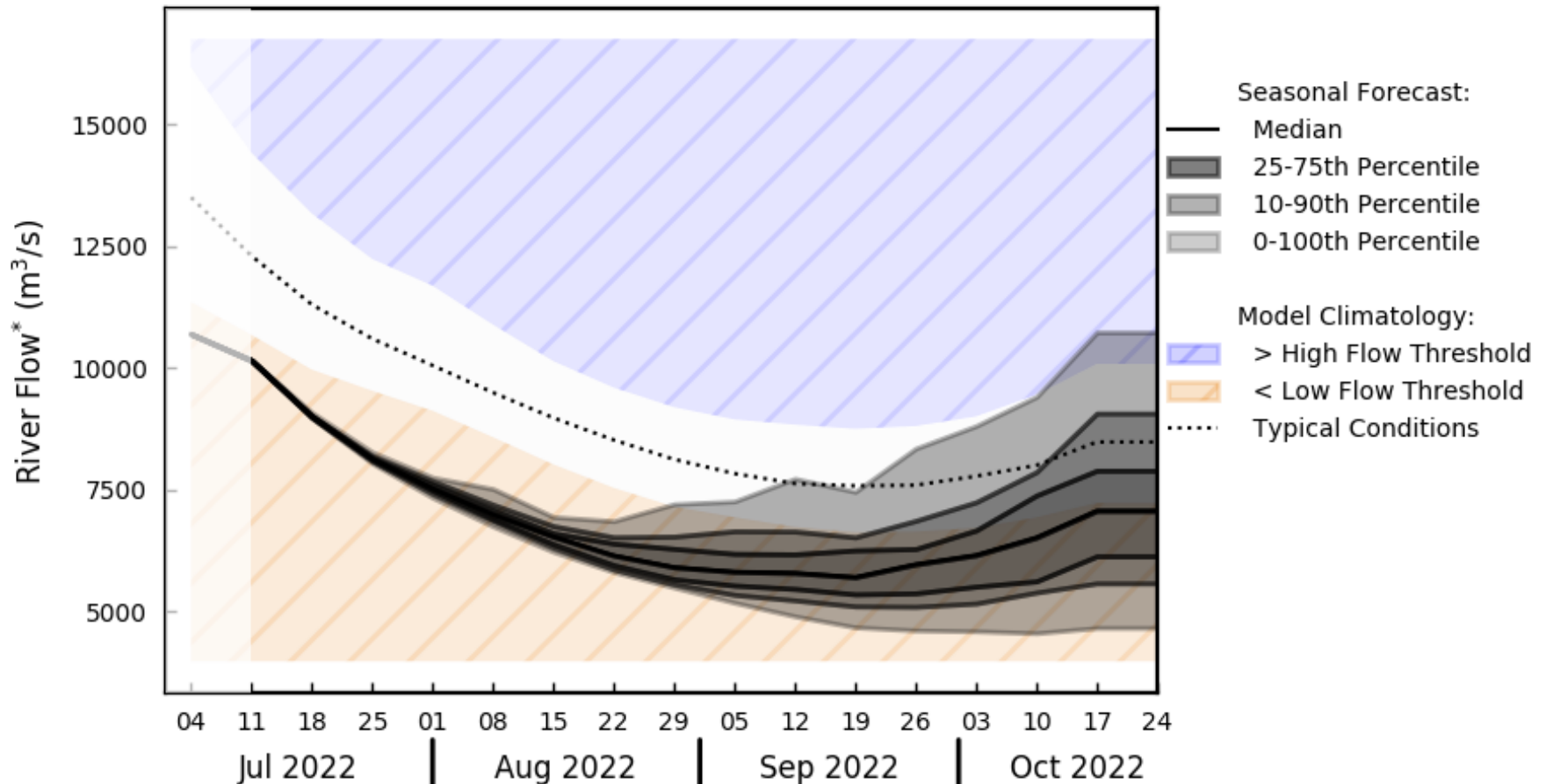


*River flow is a weekly average, displayed at start of week (dates shown)

** High and low flow thresholds refer to the 80th and 20th percentiles of the model climatology

Previsão Sazonal: GLOFAS

Porto Velho



*River flow is a weekly average, displayed at start of week (dates shown)

** High and low flow thresholds refer to the 80th and 20th percentiles of the model climatology

Contato:

Márcio Augusto Ernesto de Moraes

Pesquisador Titular

marcio.moraes@cemaden.gov.br

(12) 3205 - 0146

Agradecimentos:

