



9ª Reunião da Sala de Crise da Região Sul  
21 de setembro de 2022

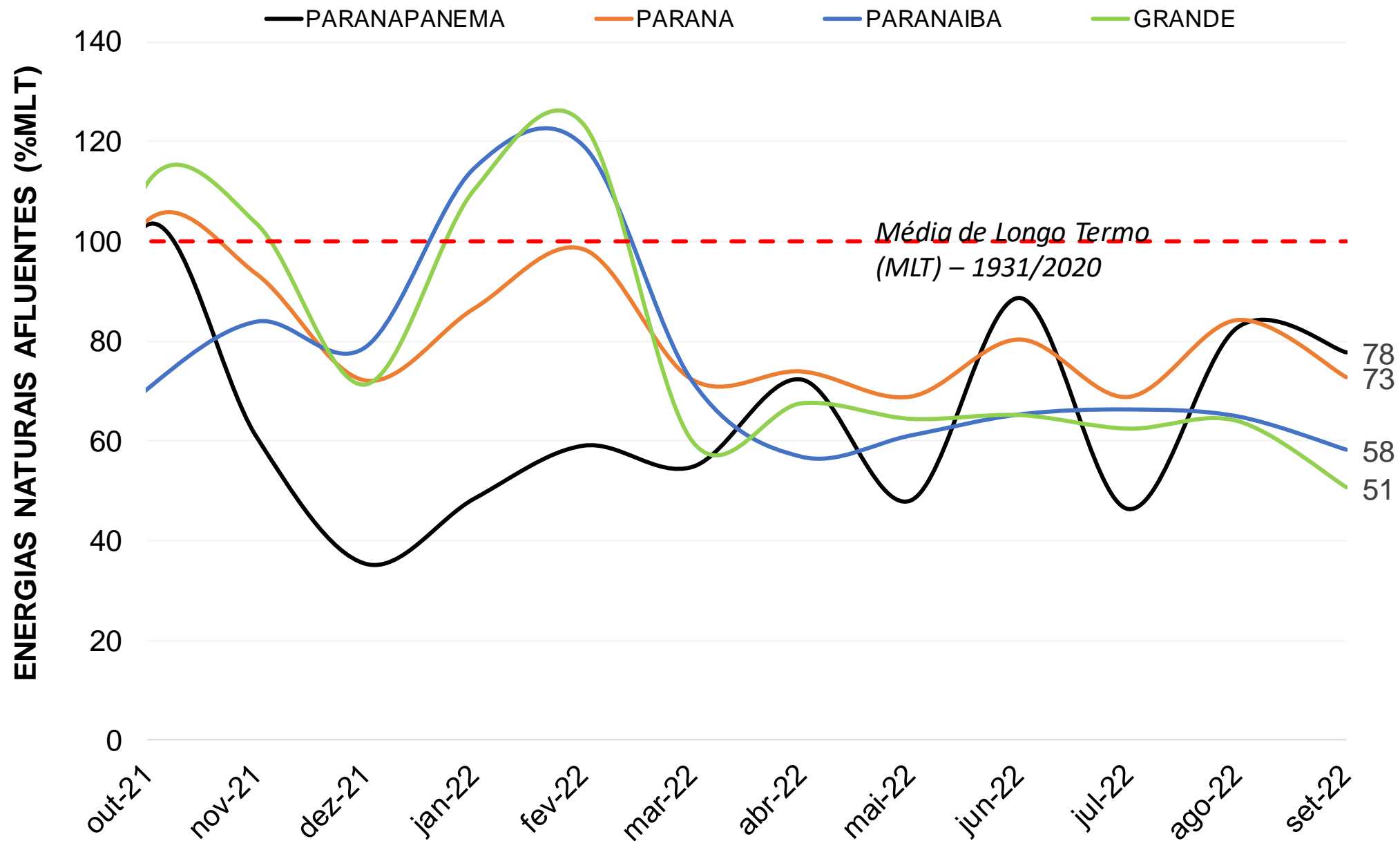
## Avaliação das condições hidrológicas e de armazenamento dos reservatórios do subsistema sul

## Agenda

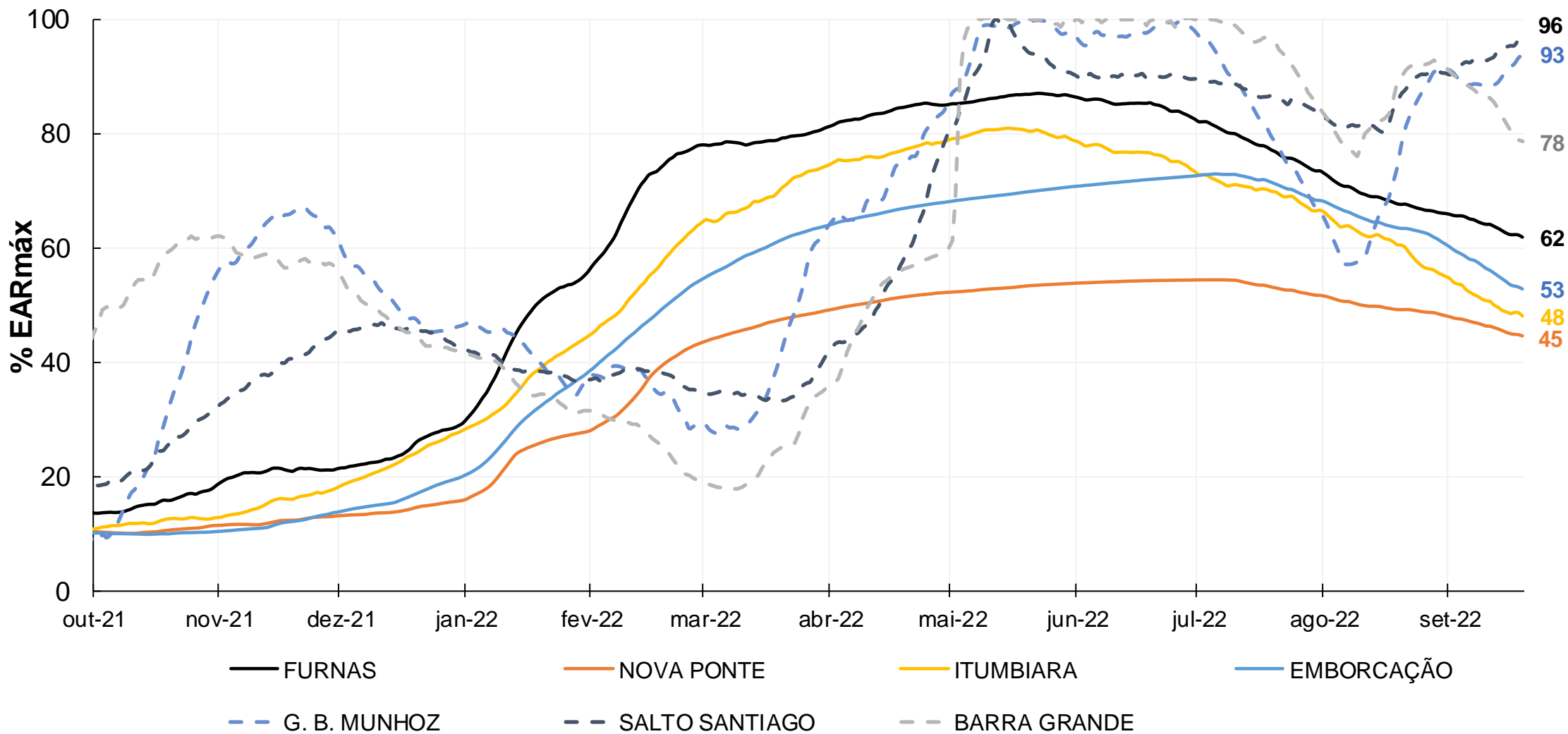
- 1. Contextualização da situação energética do SIN**
- 2. Condições hidrológicas e de armazenamento no subsistema Sul**
- 3. Operação dos principais reservatórios**
- 4. Resultados das simulações hidráulicas**

# CONTEXTUALIZAÇÃO DA SITUAÇÃO ENERGÉTICA DO SIN

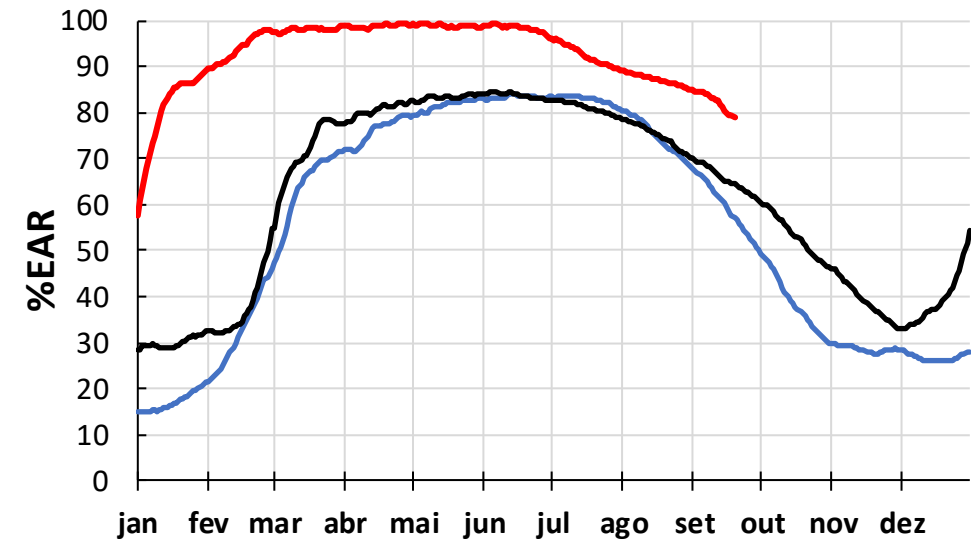
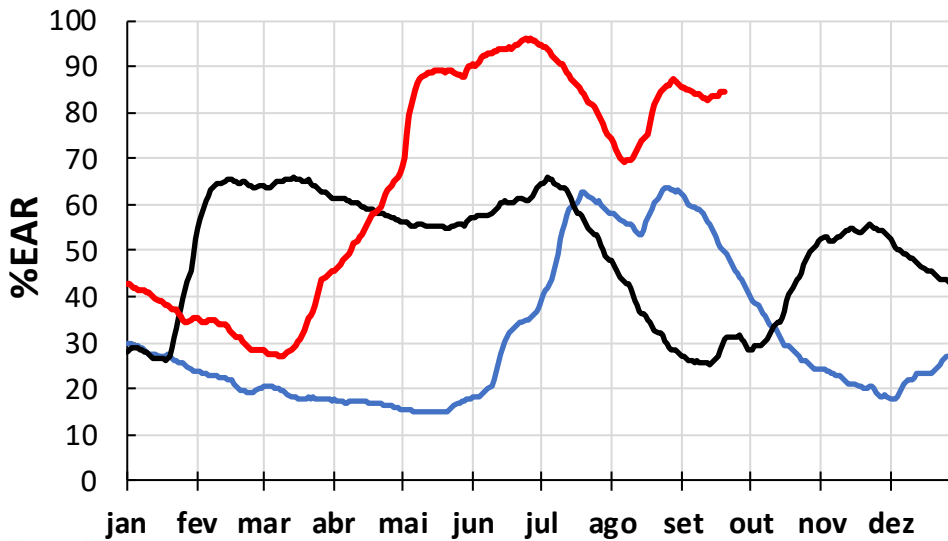
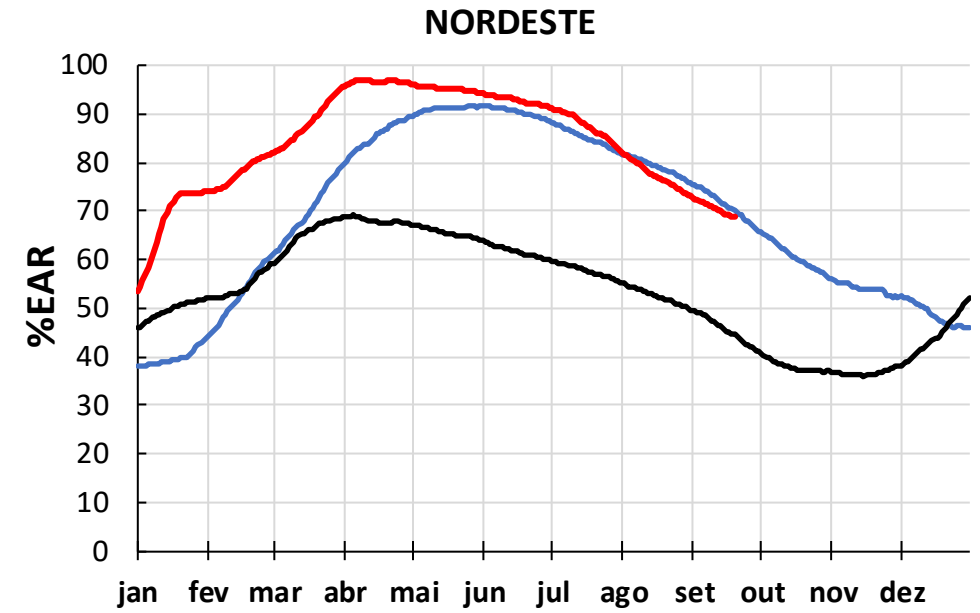
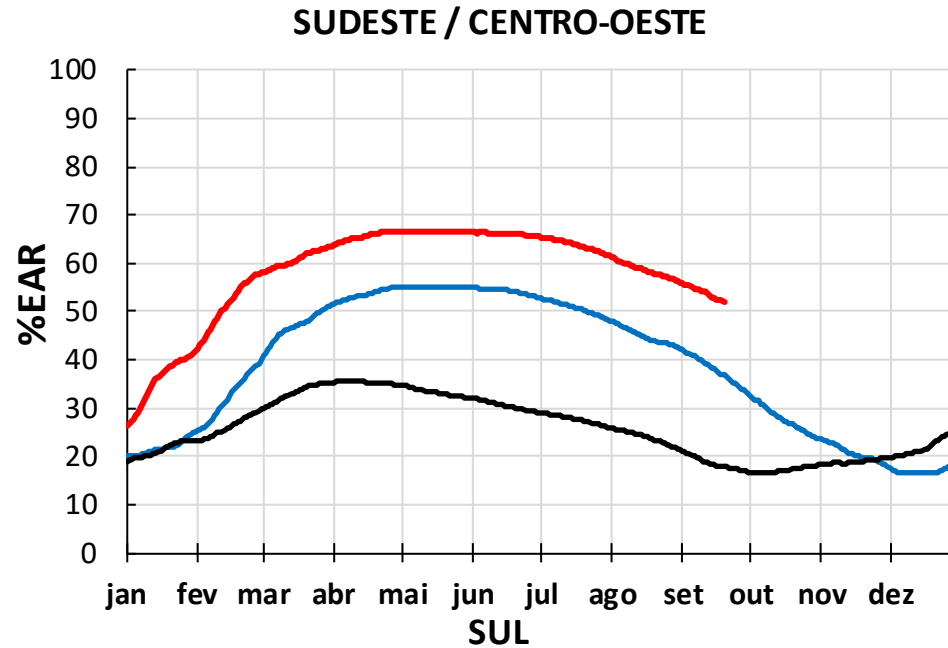
# Energias naturais afluentes de bacias da região sudeste



# Evolução dos armazenamentos nos principais reservatórios

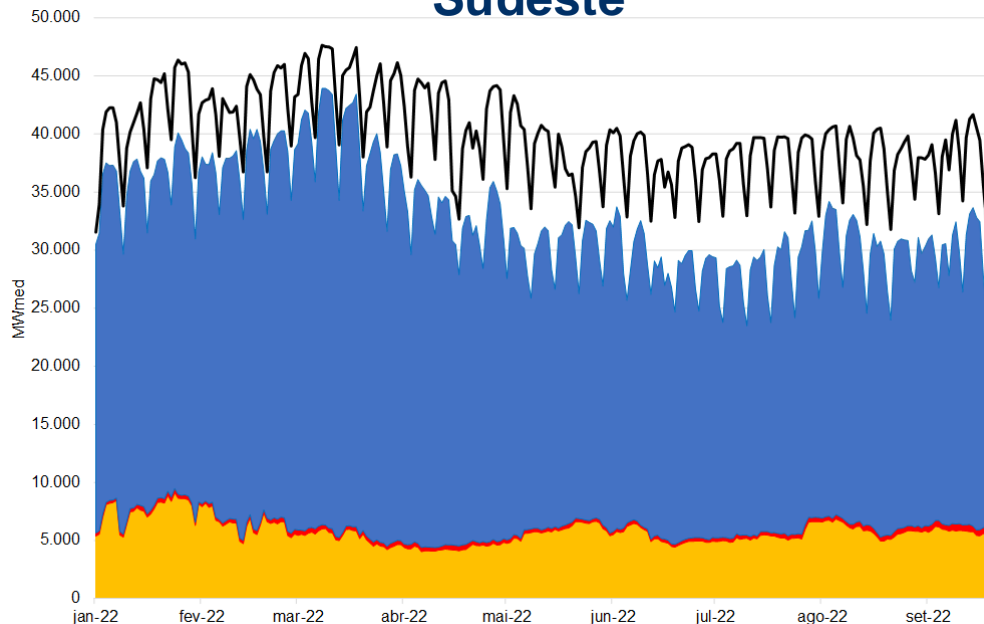


# Evolução dos armazenamentos nos subsistemas do SIN em 2022

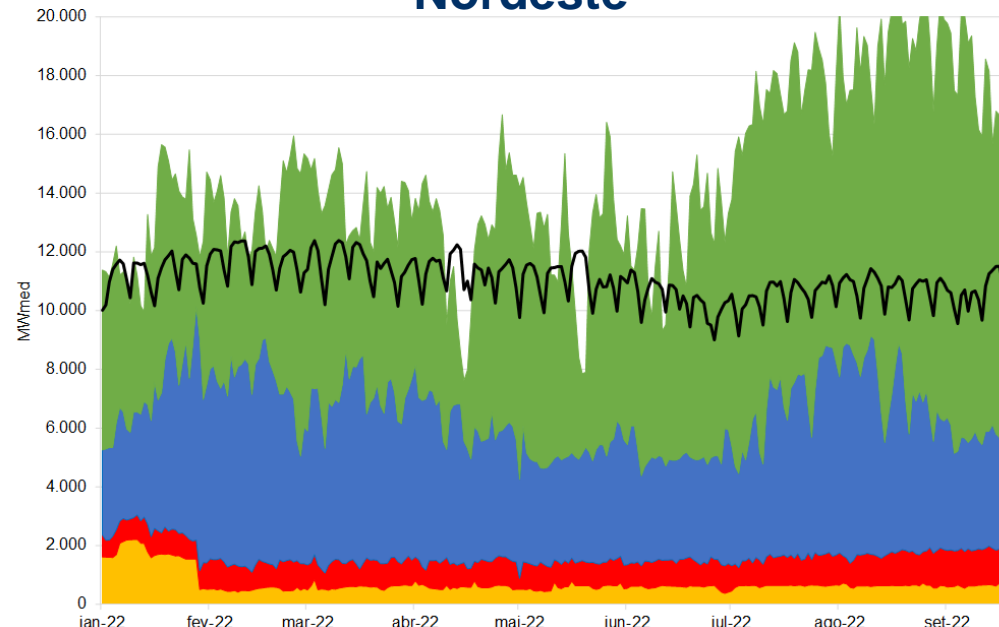


# Balanço energético dos subsistemas em 2022

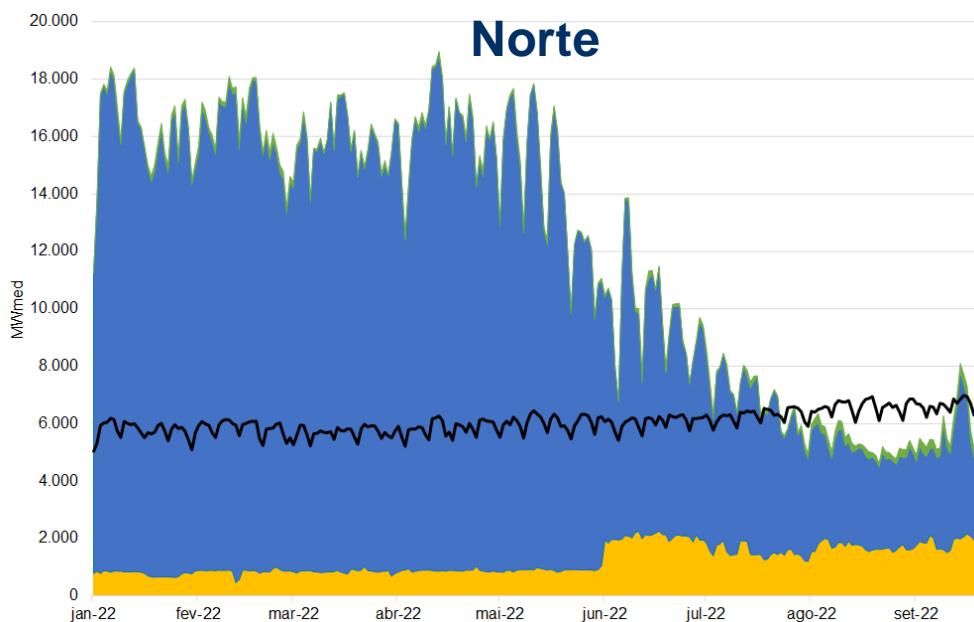
## Sudeste



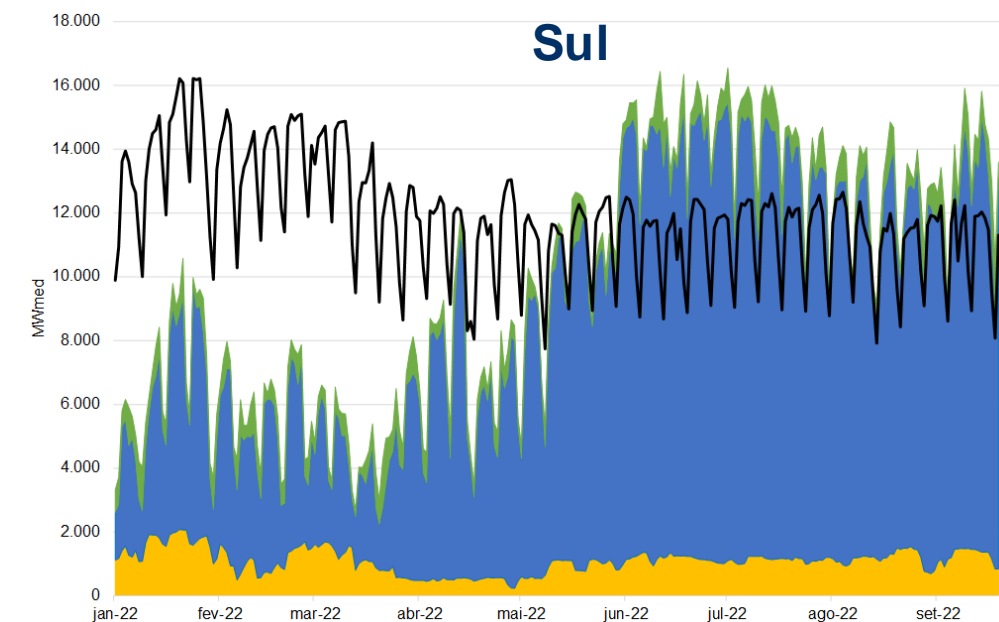
## Nordeste



## Norte



## Sul



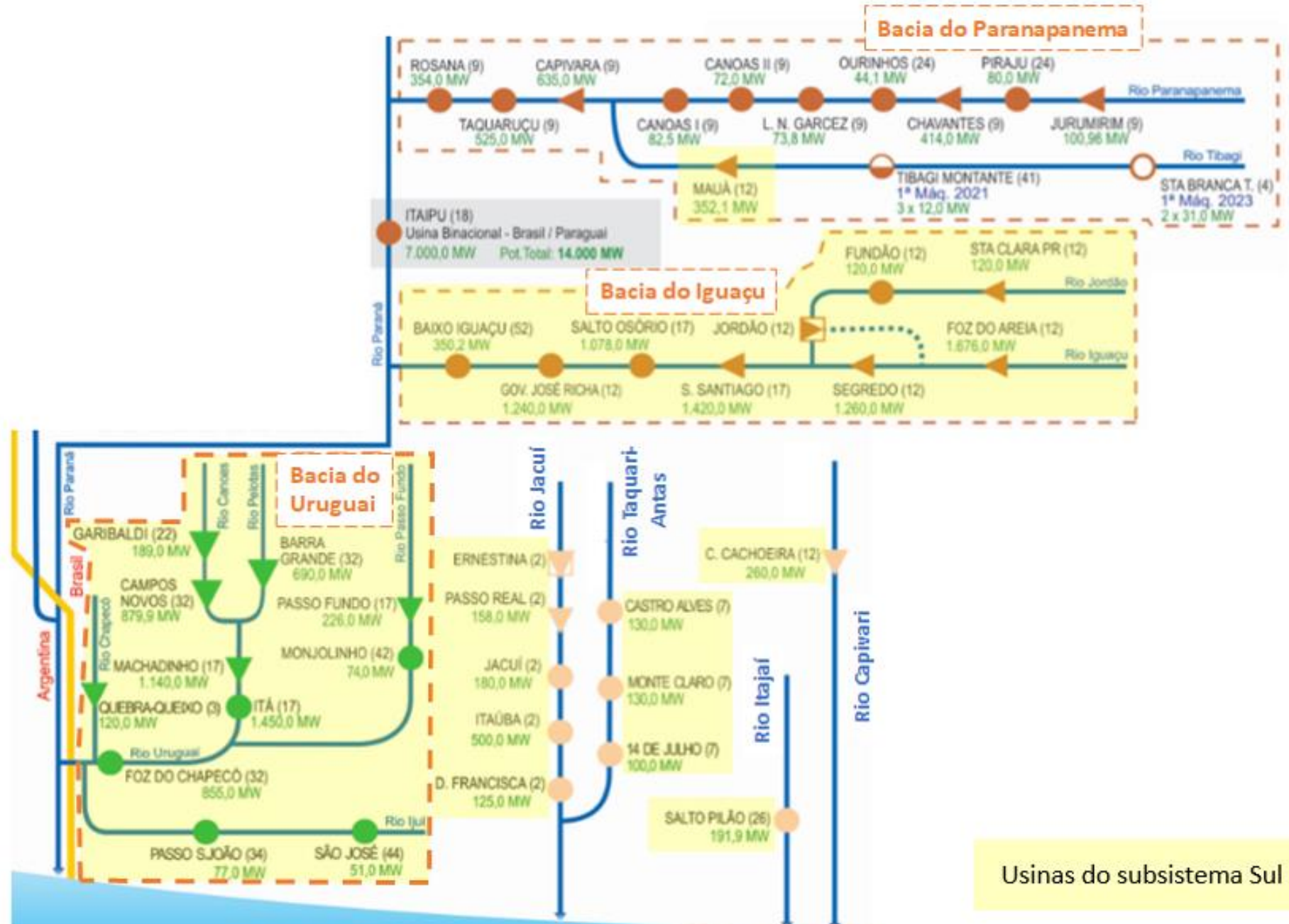
- Carga
- Eólica
- Hidro
- Solar
- Térmica



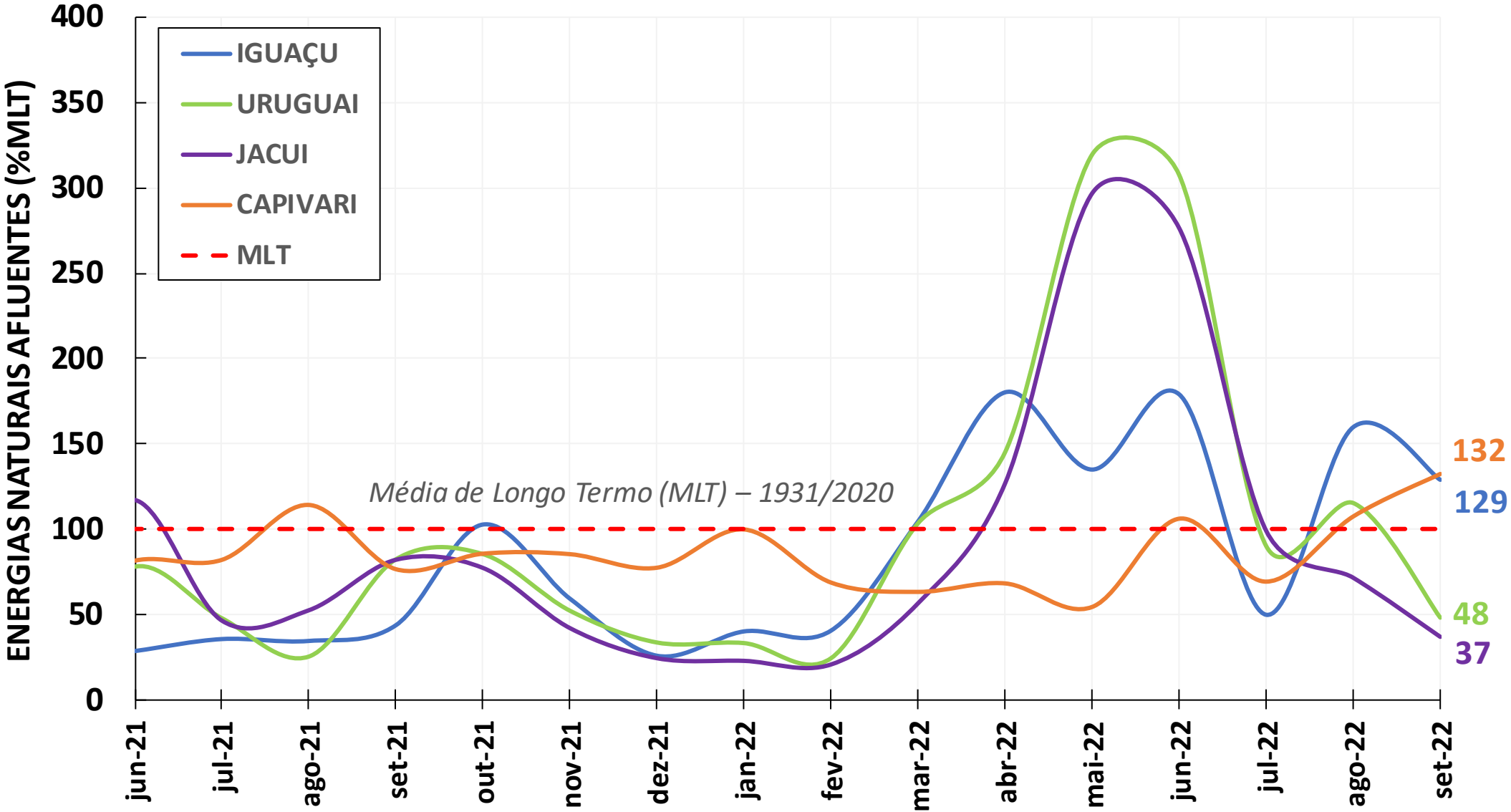
# CONDIÇÕES HIDROLÓGICAS E ARMAZENAMENTOS NO SUBSISTEMA SUL



# Diagrama esquemático das bacias e usinas hidroelétricas do subsistema Sul

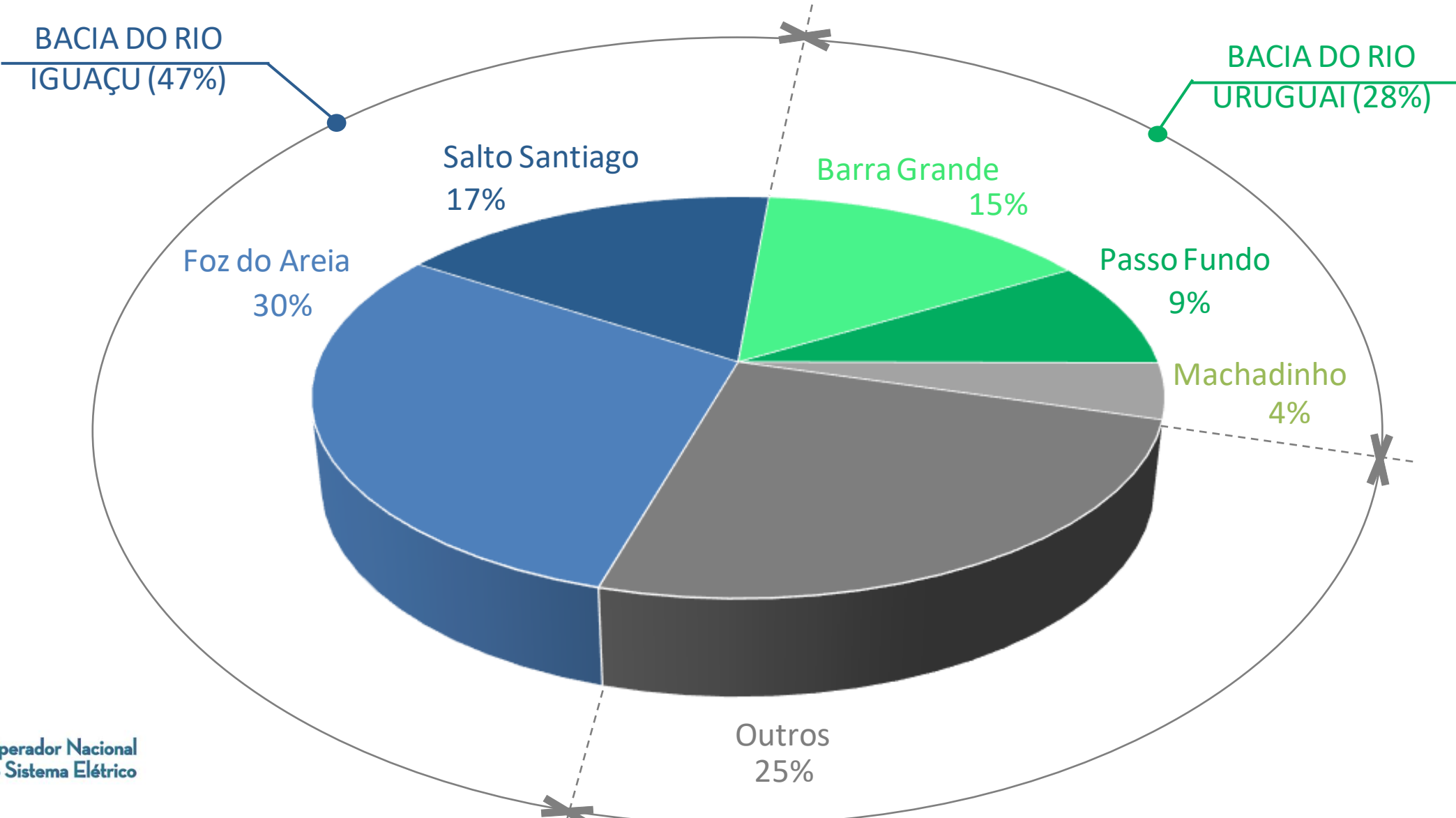


# Energia natural afluente nas bacias da região sul

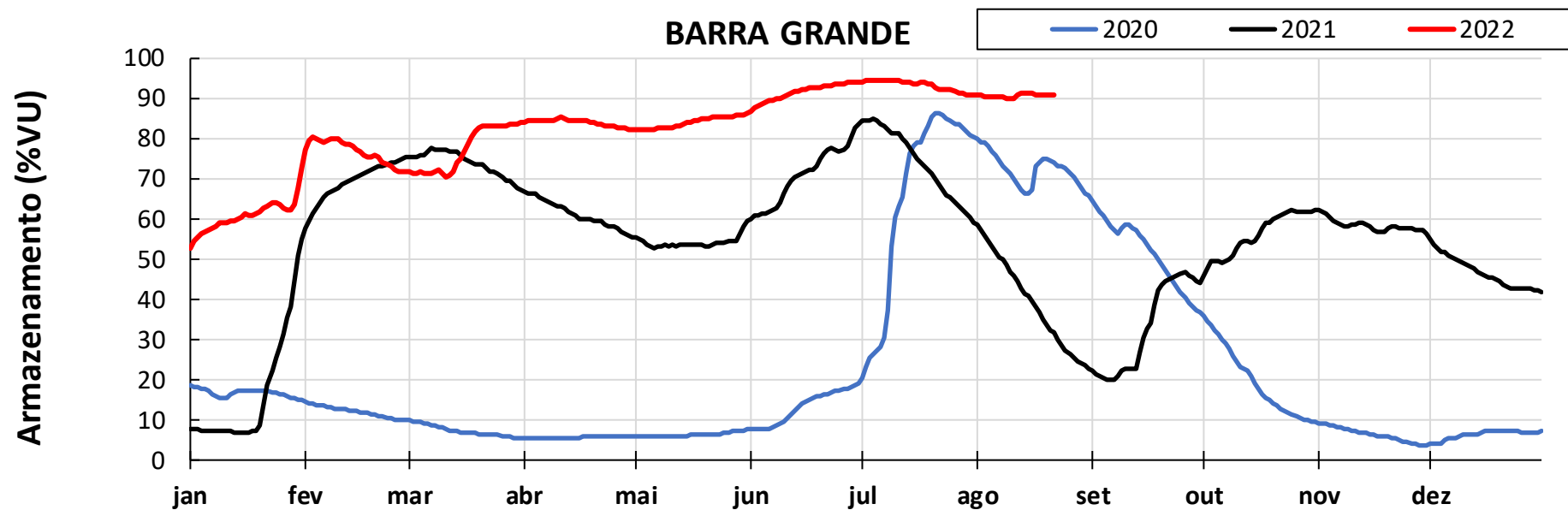
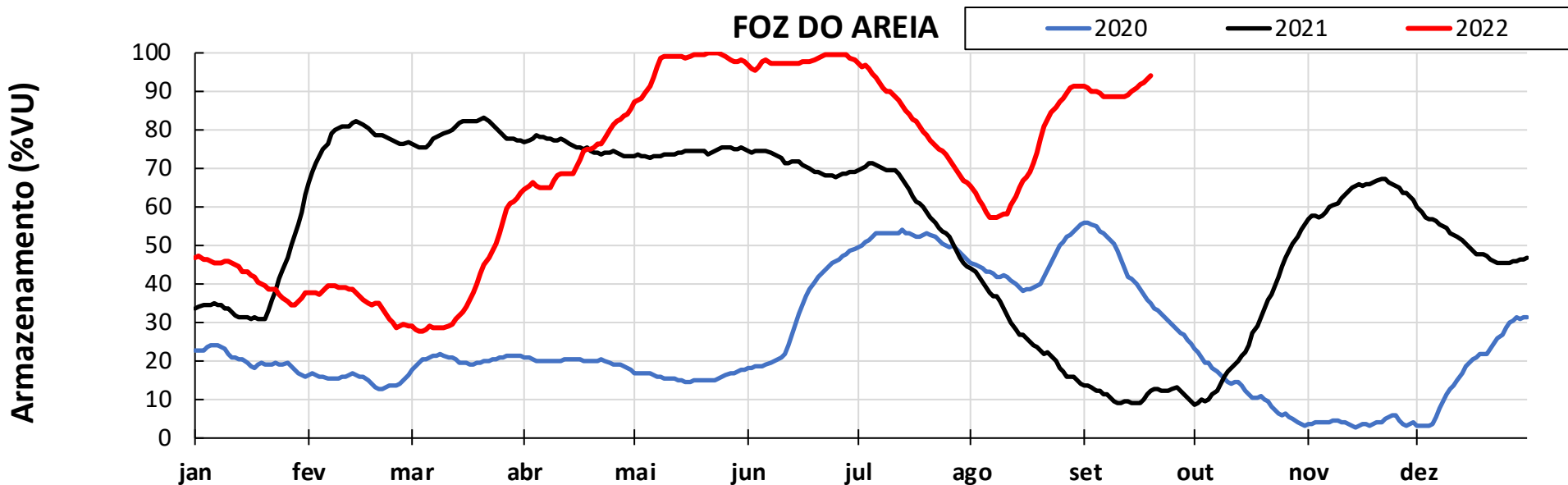


# Participação dos principais reservatórios na energia armazenada máxima do subsistema Sul

EAR<sub>máx</sub> do subsistema sul = 19.897MWmed (7% da EAR<sub>máx</sub> do SIN)

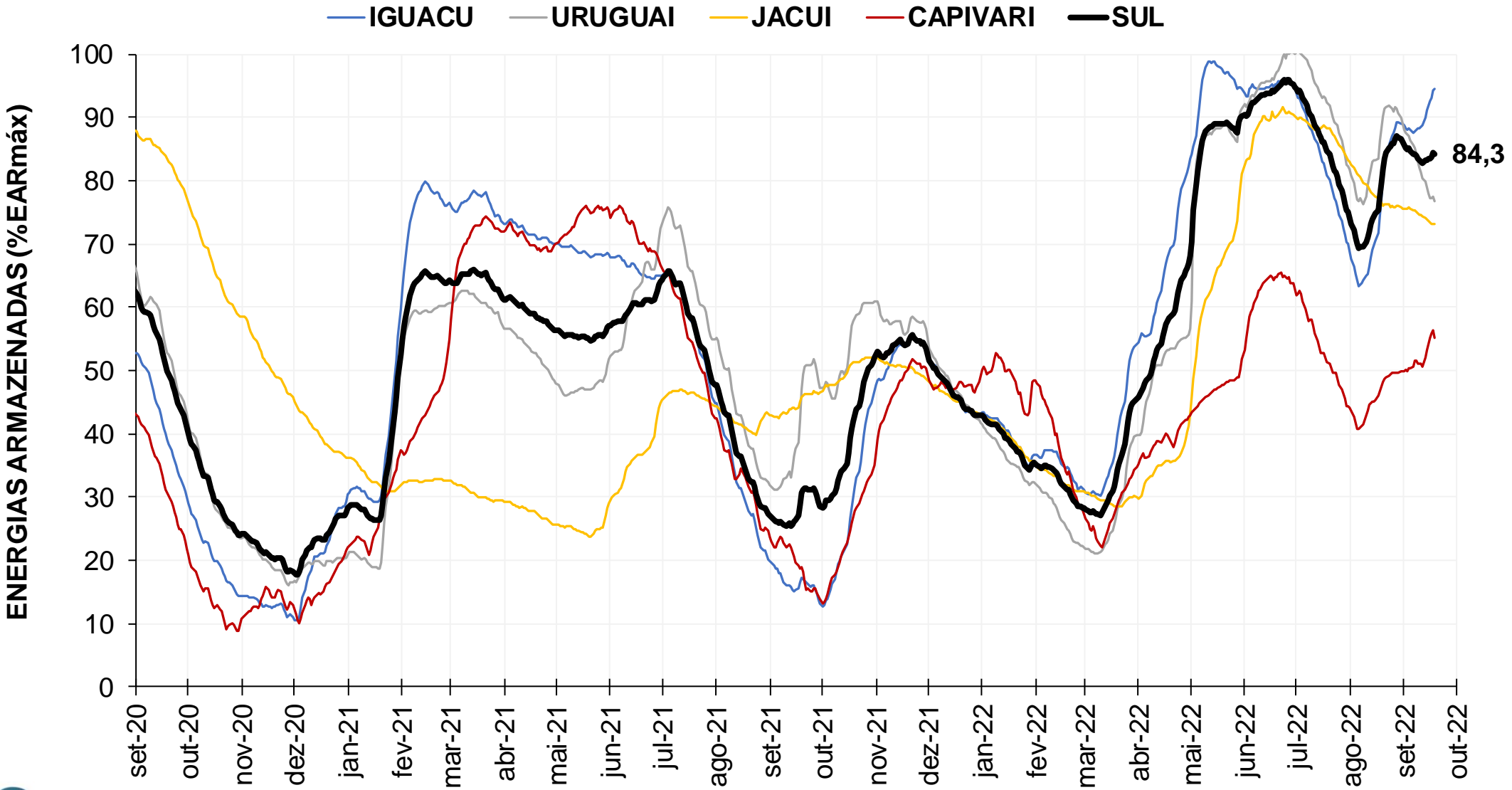


# Situação de armazenamento dos principais reservatórios das bacias dos rios Iguaçu e Uruguai entre 2020 e 2022



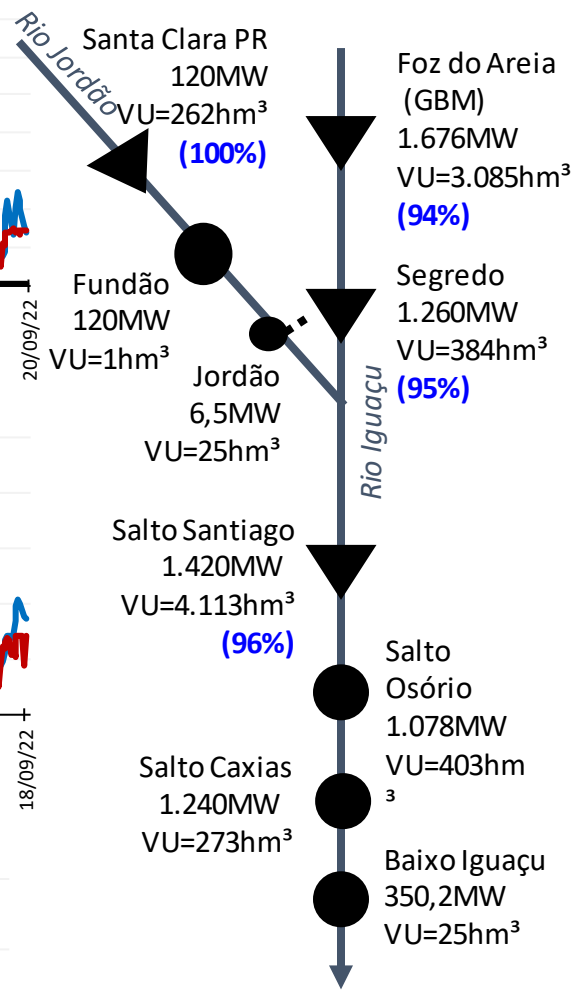
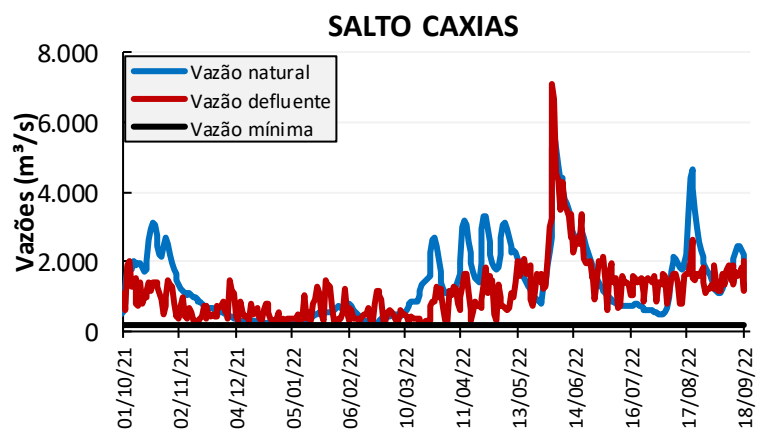
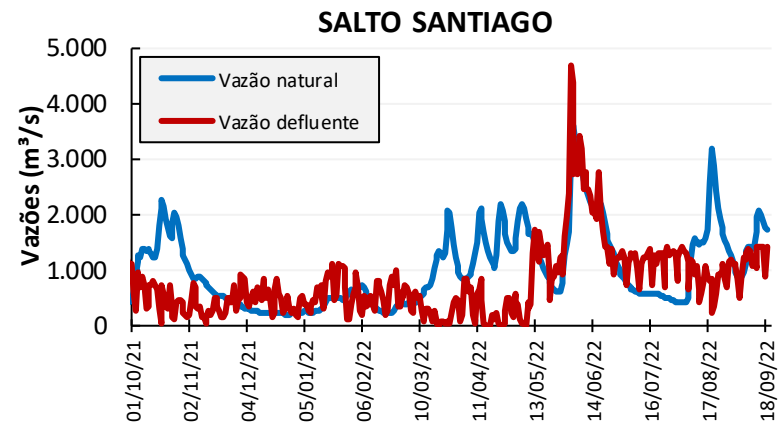
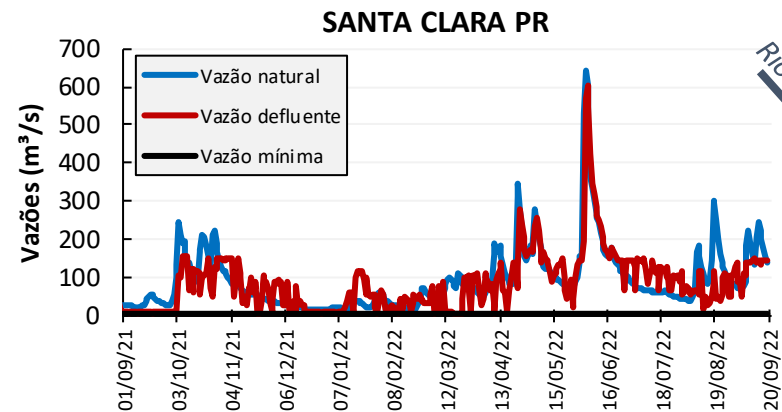
**Nota:** Dados até 19/09/2022.

# Evolução da energia armazenada nas bacias do subsistema sul



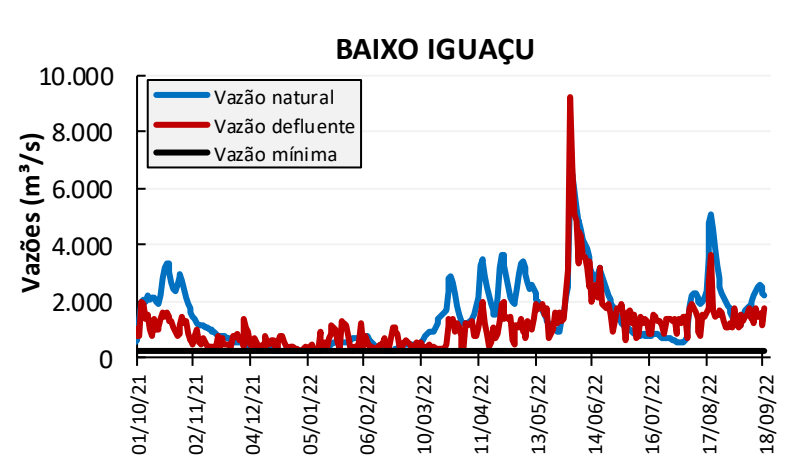
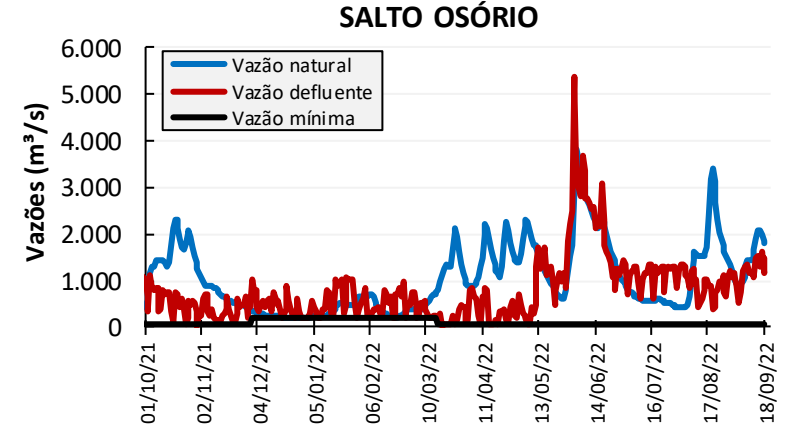
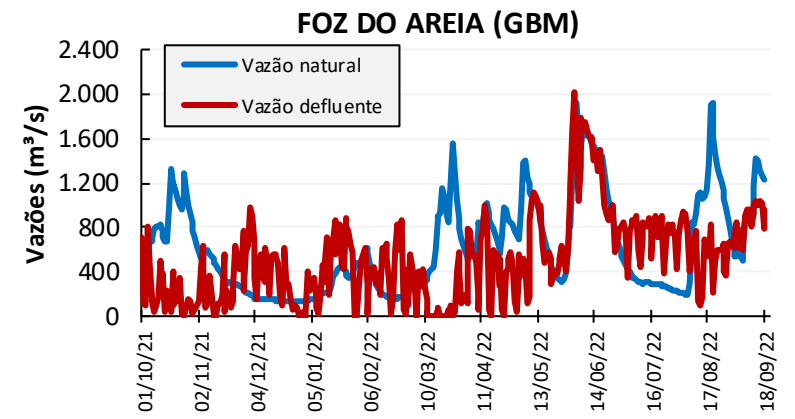
# OPERAÇÃO DOS PRINCIPAIS RESERVATÓRIOS

# Reservatórios da bacia do rio Iguaçu

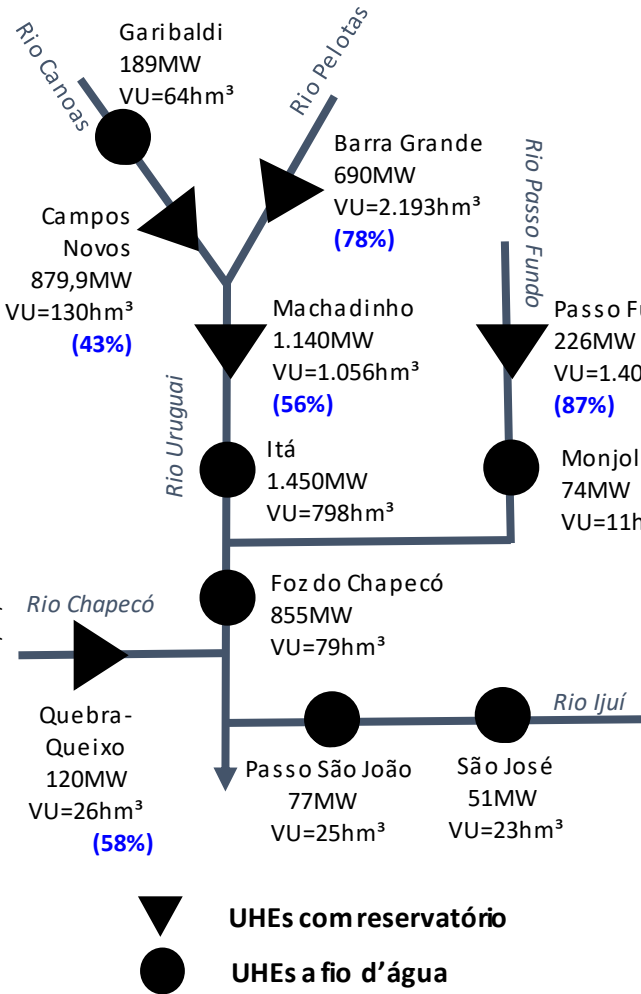
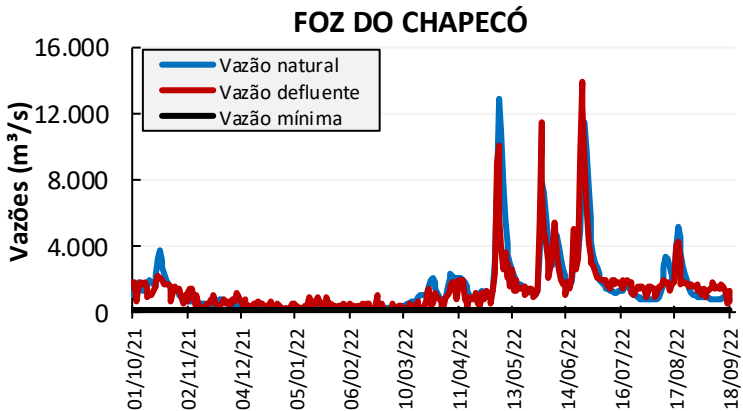
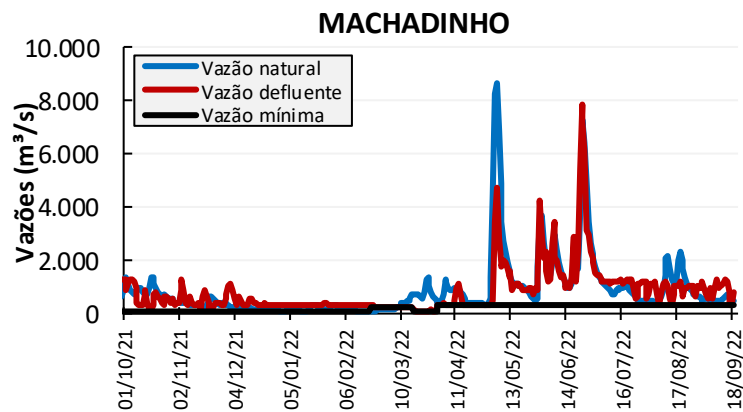
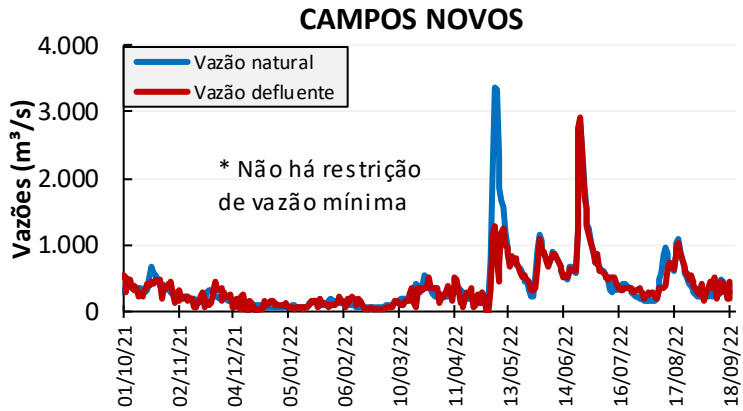


▼ UHEs com reservatório  
 ● UHEs a fio d'água

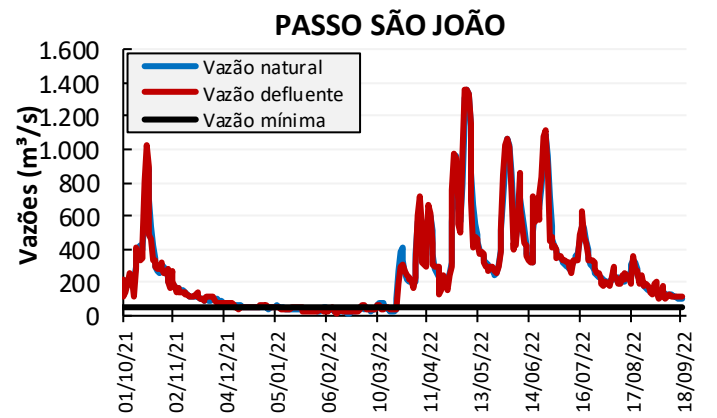
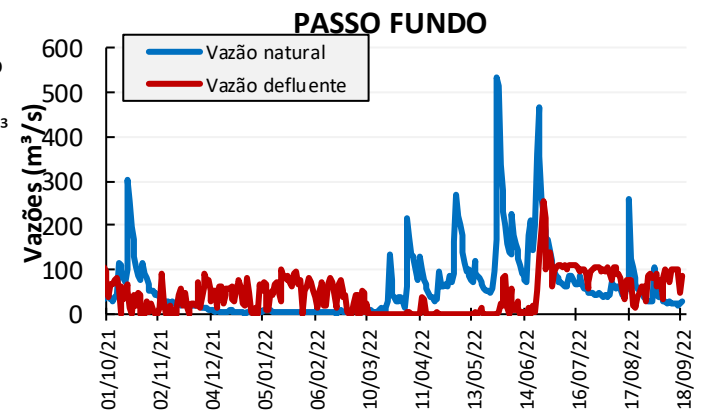
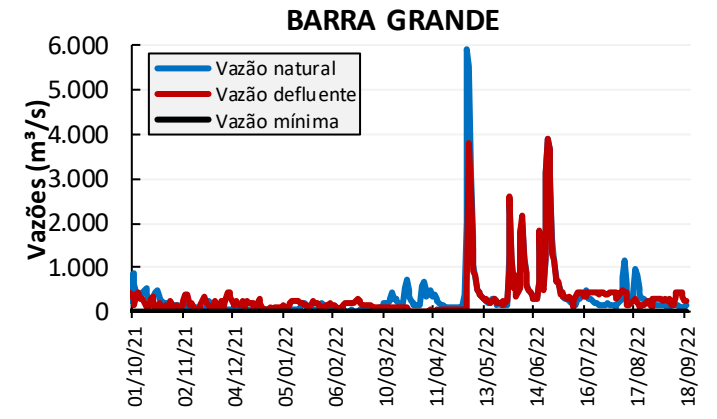
**Observações:** 1) Gráficos até dia 19/09; e 2) % VUs do IPDO de 20/09/2022.



# Reservatórios da bacia do rio Uruguai



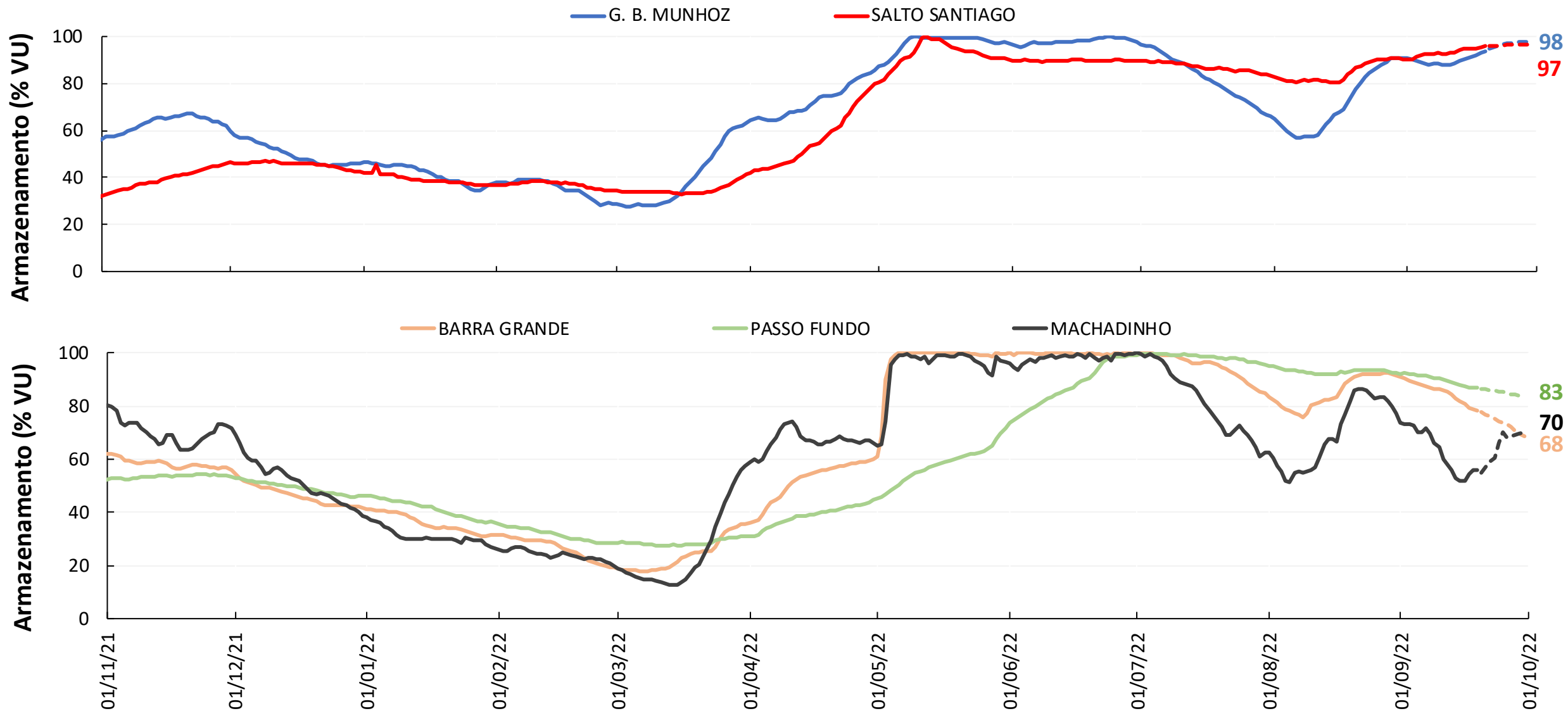
**Observações:** 1) Gráficos até dia 19/09; e 2) % VUs do IPDO de 20/09/2022.





# RESULTADOS DAS SIMULAÇÕES HIDRÁULICAS

# Resultado da simulação – 20/09/2022 a 30/09/2022





9ª Reunião da Sala de Crise da Região Sul  
21 de setembro de 2022

## Avaliação das condições hidrológicas e de armazenamento dos reservatórios do subsistema sul