


# AVALIAÇÃO DAS CONDIÇÕES HIDROLÓGICAS E DE ARMAZENAMENTO DOS RESERVATÓRIOS DO SUBSISTEMA SUL

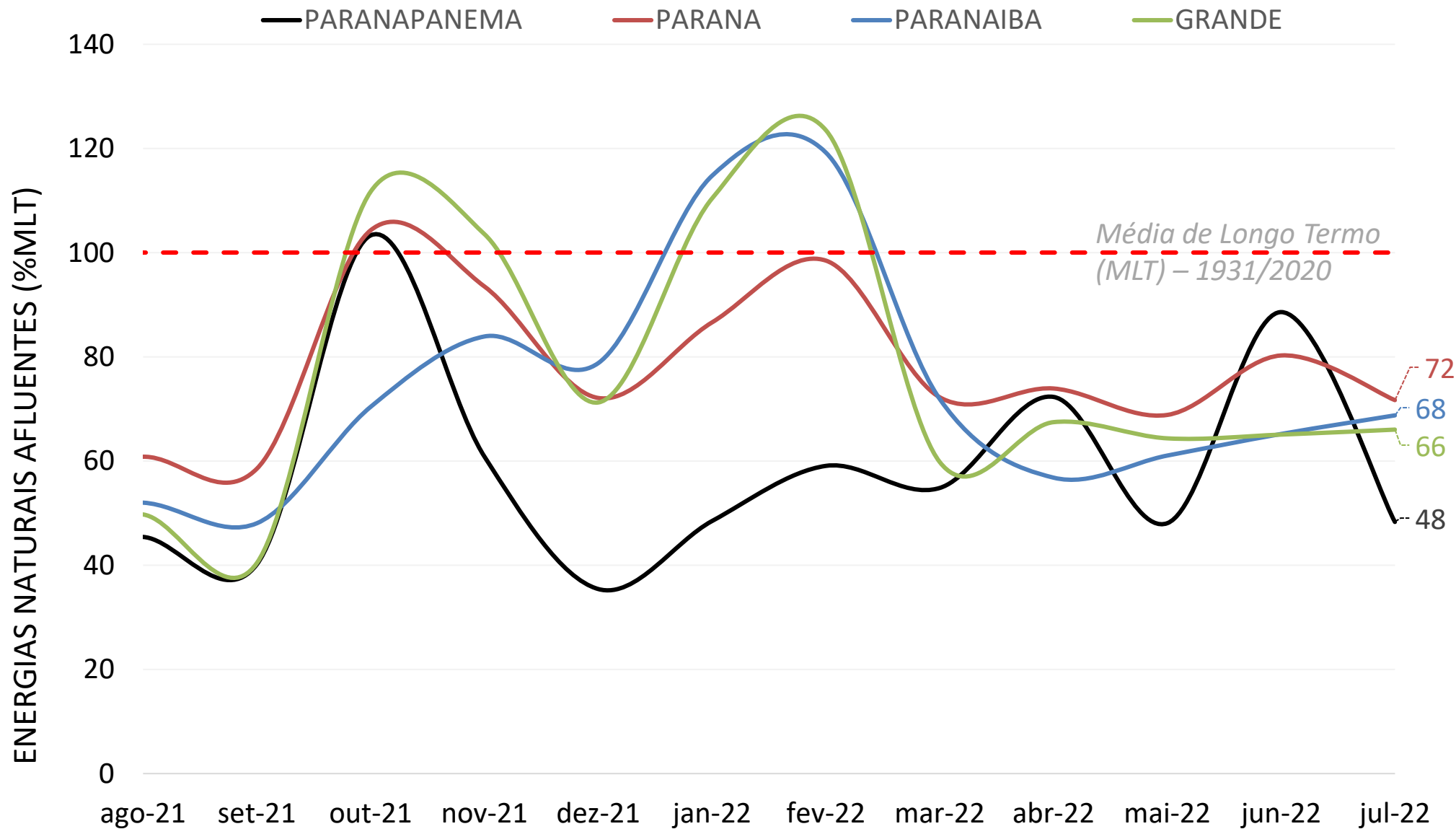
7ª Reunião da Sala de Crise da Região Sul  
20 de julho de 2022

- 1** Contextualização da situação energética do SIN
- 2** Condições hidrológicas e armazenamentos no subsistema Sul
- 3** Operação dos principais reservatórios
- 4** Resultados das simulações hidráulicas

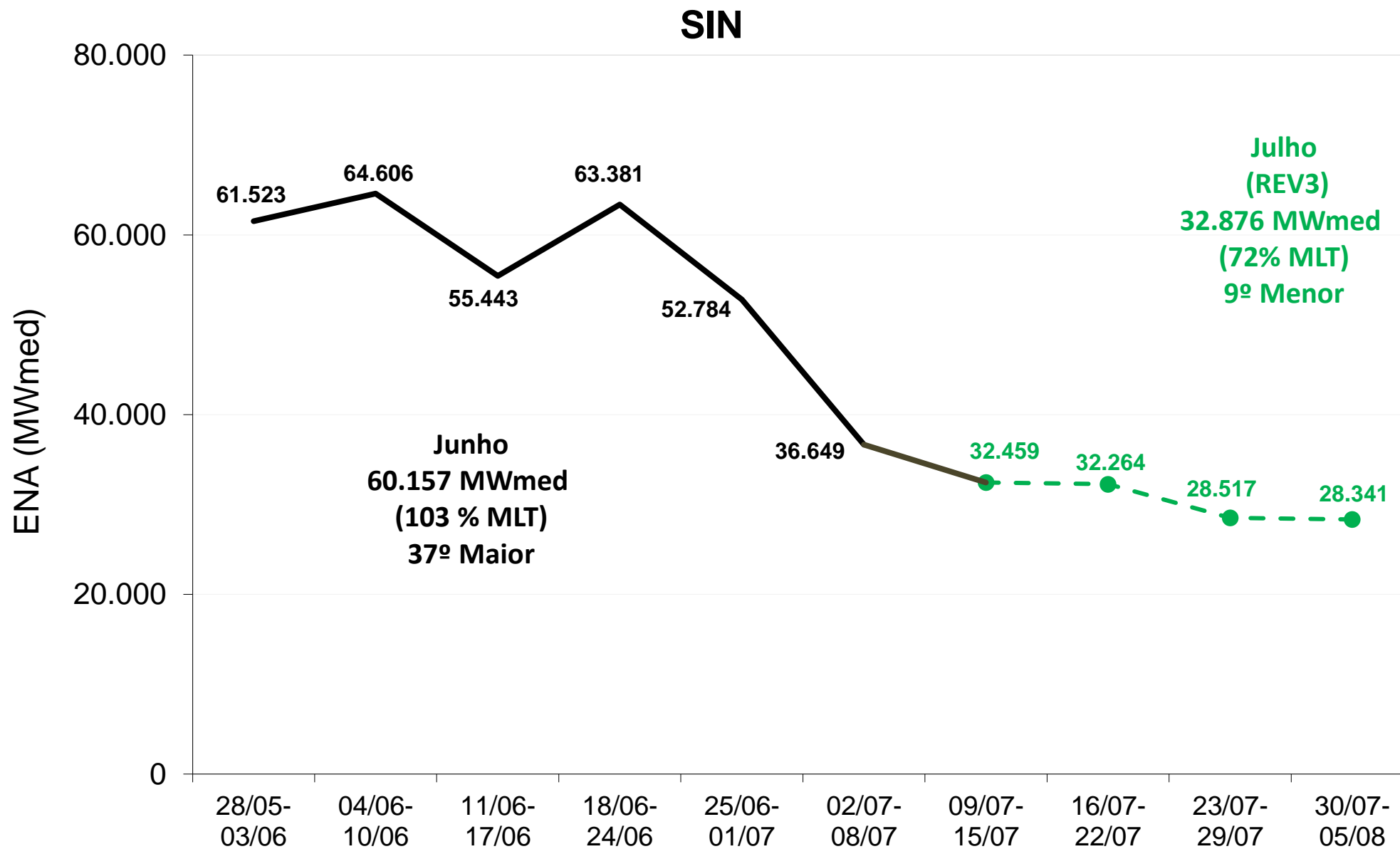


# CONTEXTUALIZAÇÃO DA SITUAÇÃO ENERGÉTICA DO SIN

# ENERGIAS NATURAIS AFLUENTES DE BACIAS DA REGIÃO SUDESTE



**Nota:** (1) Dados até 18/07/2022.

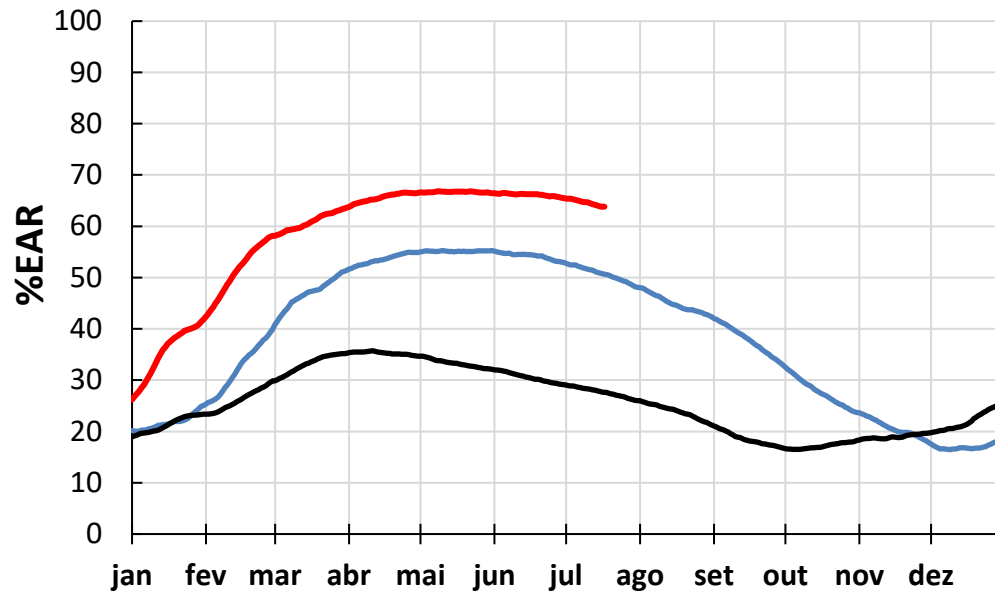


SIN: set/21 - jun/22: 98% MLT - 46º Menor do histórico  
 dez/21 - jun/22: 101% MLT - 36º Maior do histórico

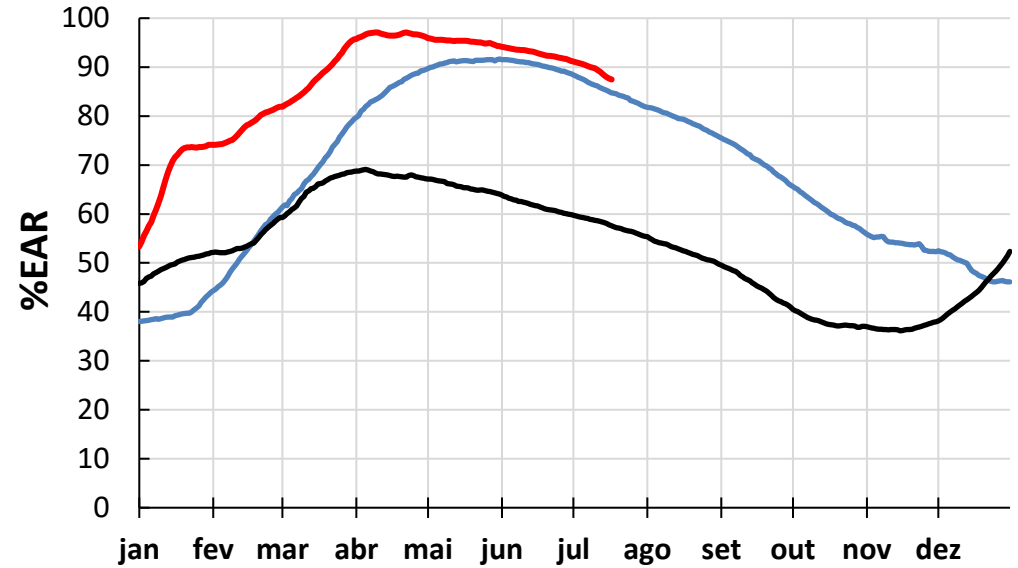


# EVOLUÇÃO DOS ARMAZENAMENTOS EM 2022 EM RELAÇÃO A 2020 E 2021

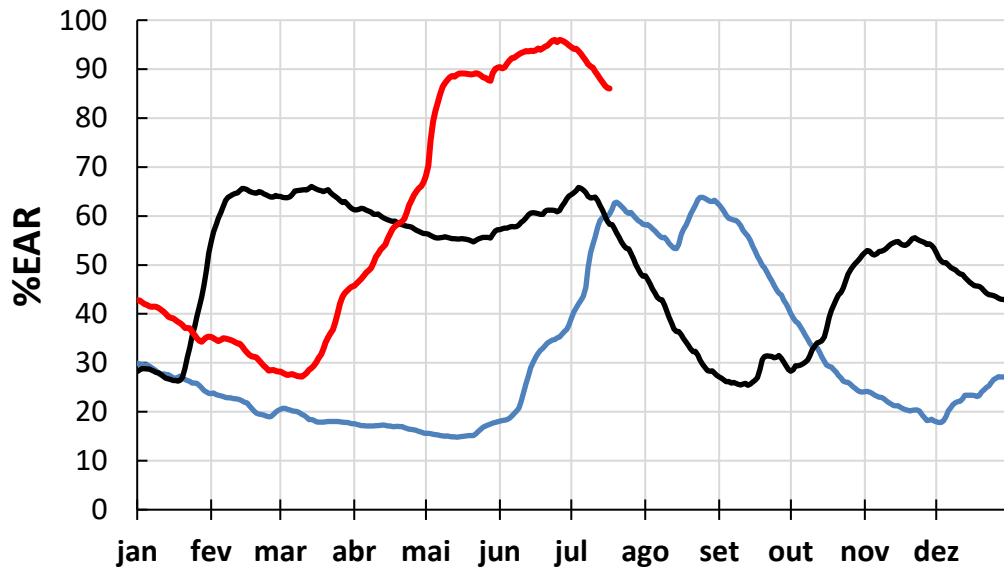
## SUDESTE / CENTRO-OESTE



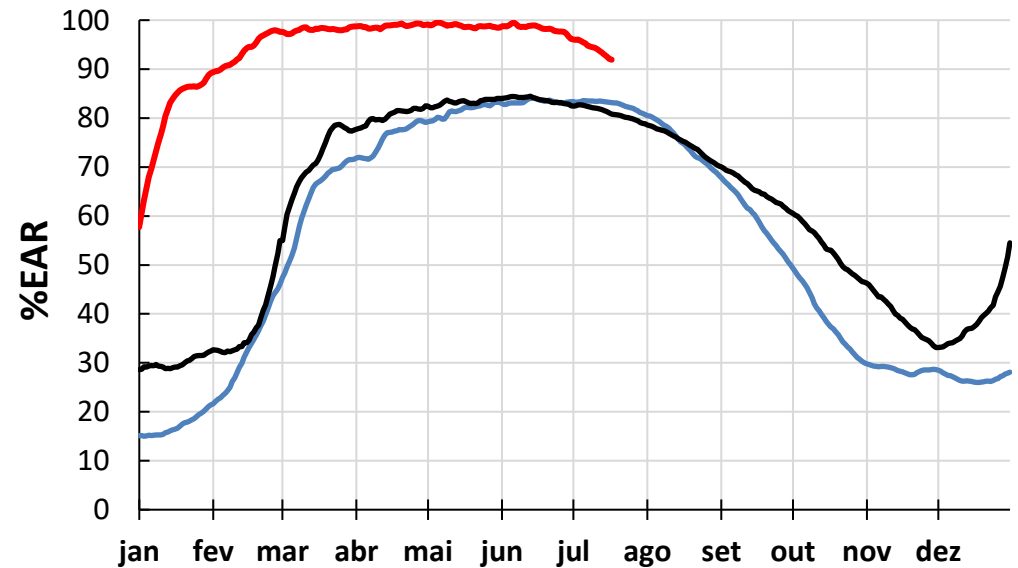
## NORDESTE



## SUL



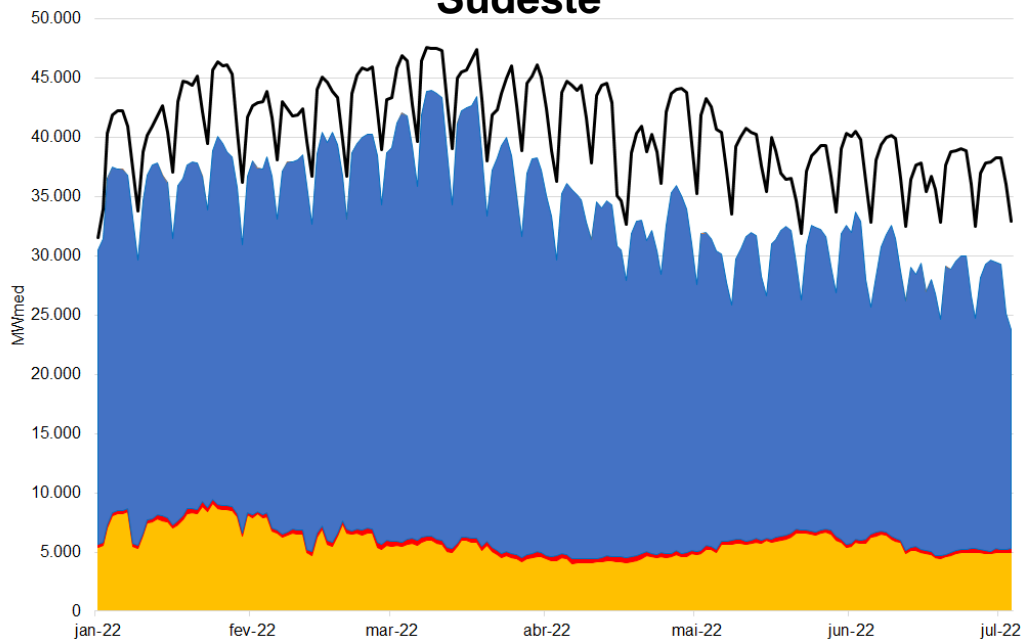
## NORTE



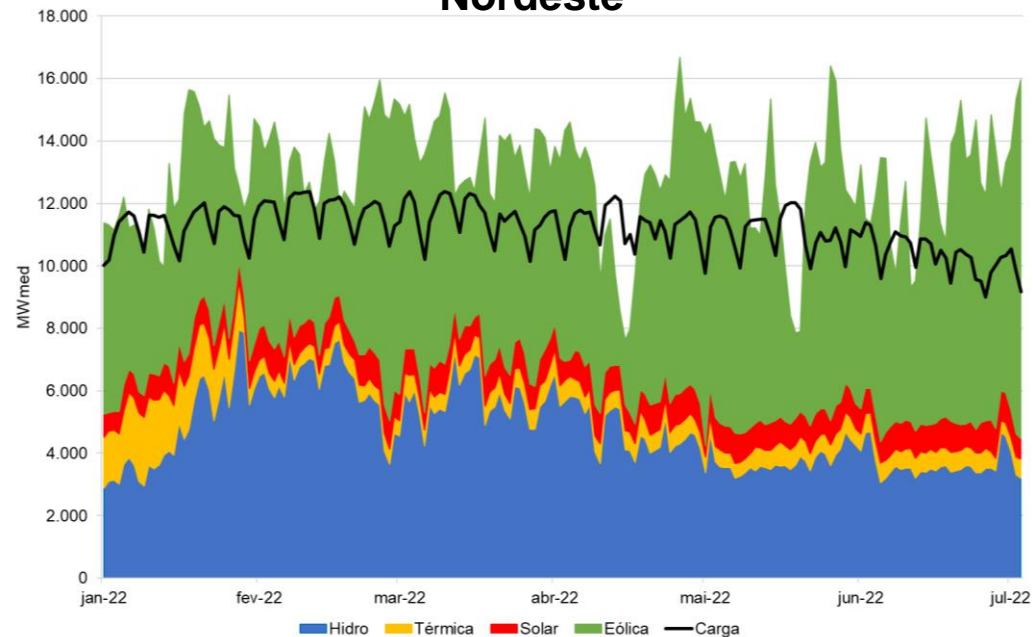
— 2020 — 2021 — 2022

# Atendimento à Carga (em MWmed)

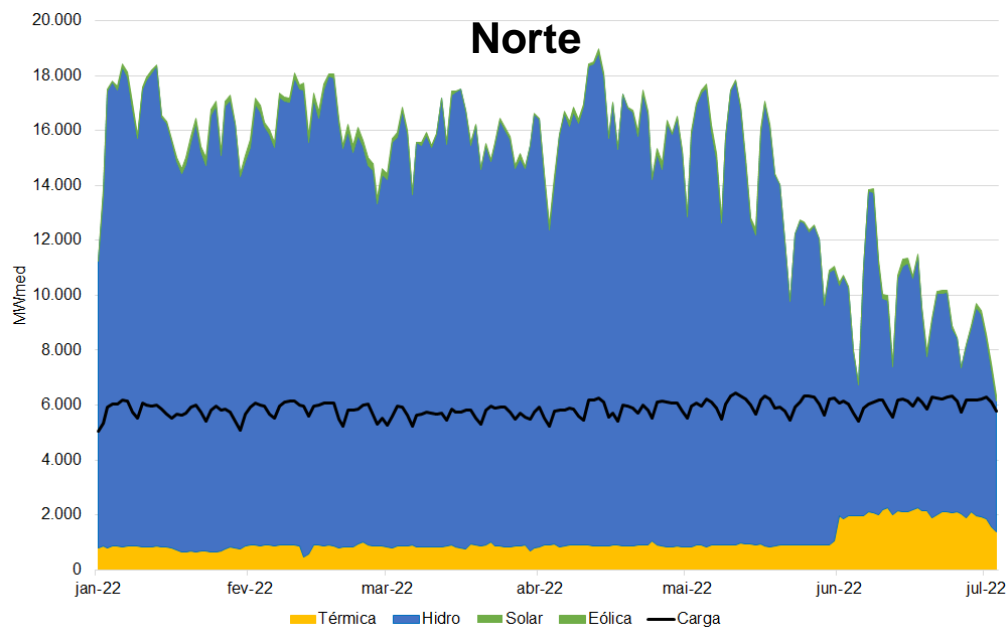
## Sudeste



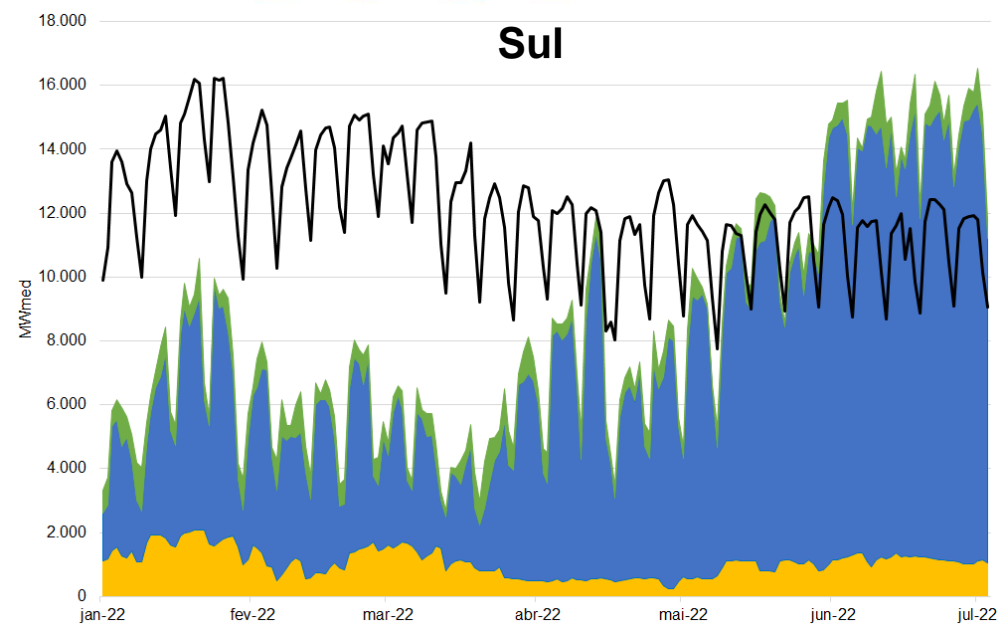
## Nordeste



## Norte



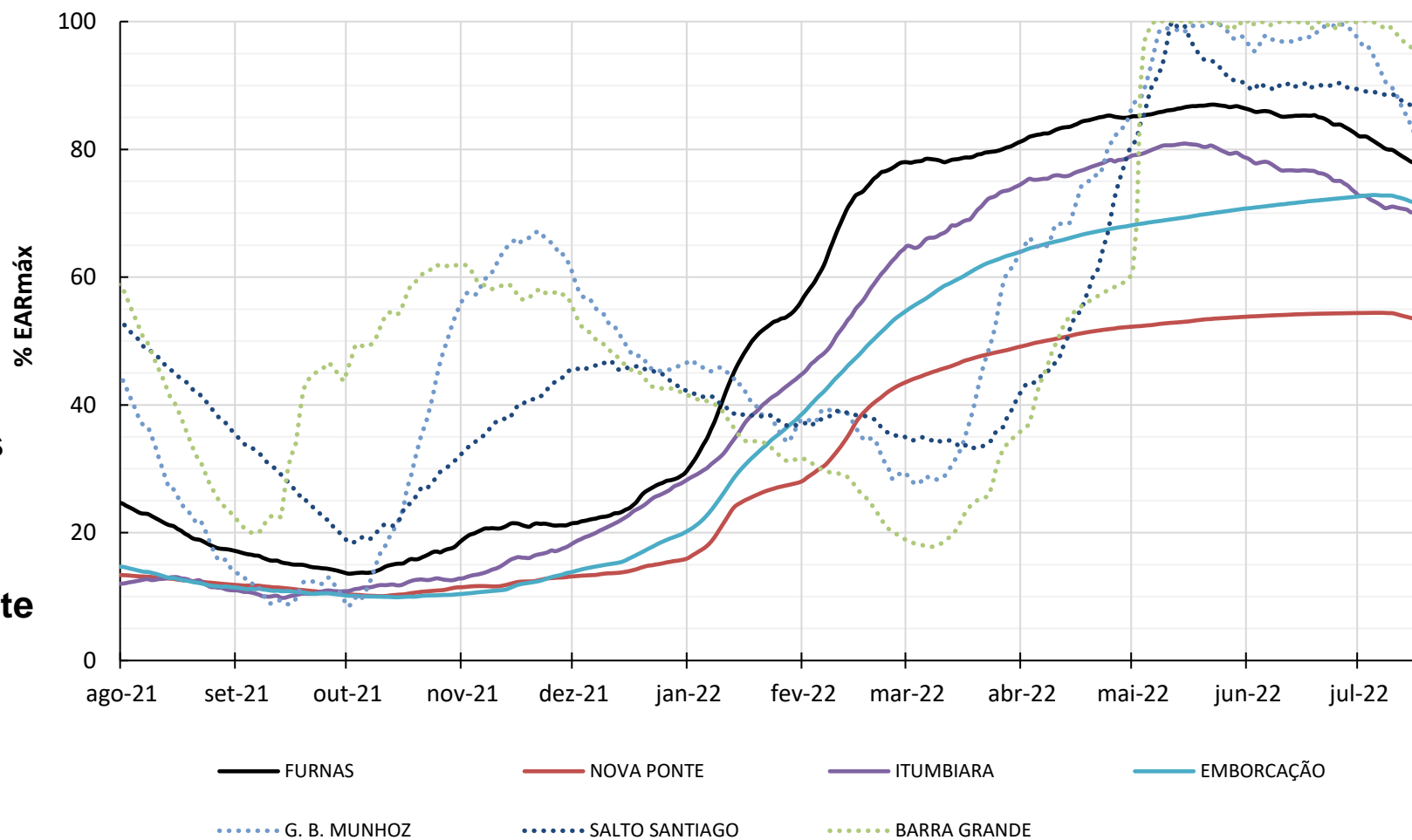
## Sul



■ Hidro 
 ■ Térmica 
 ■ Solar 
 ■ Eólica 
 — Carga

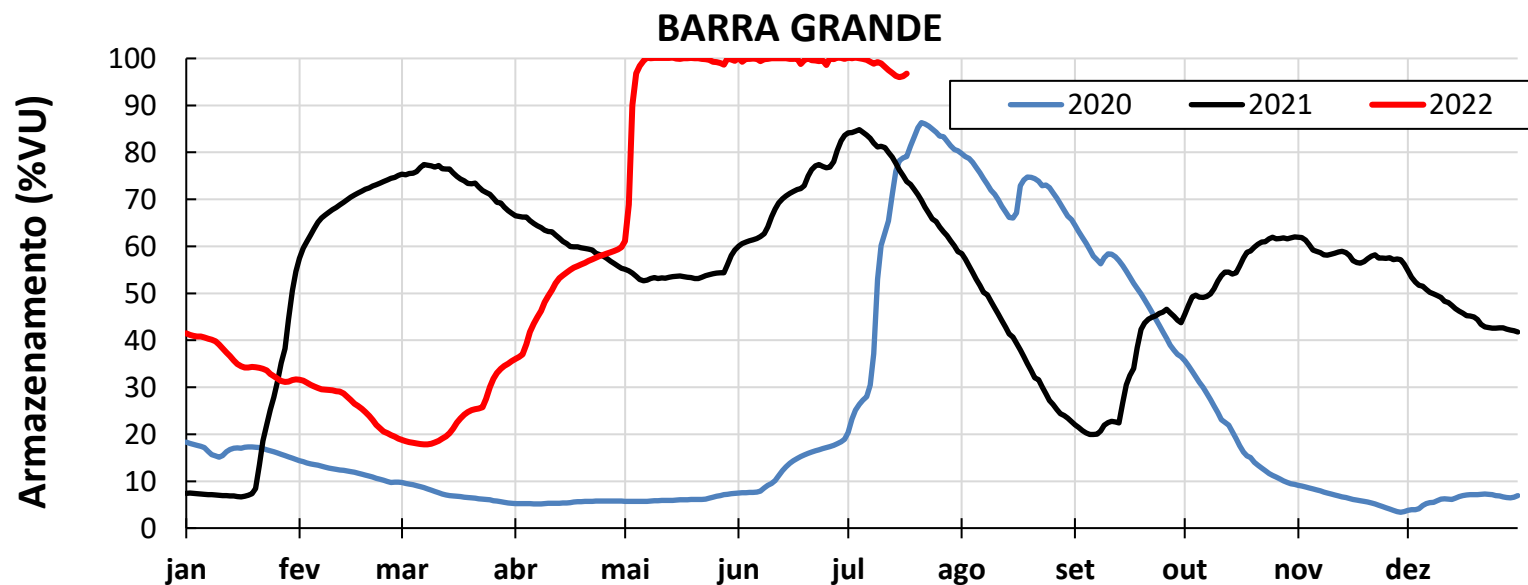
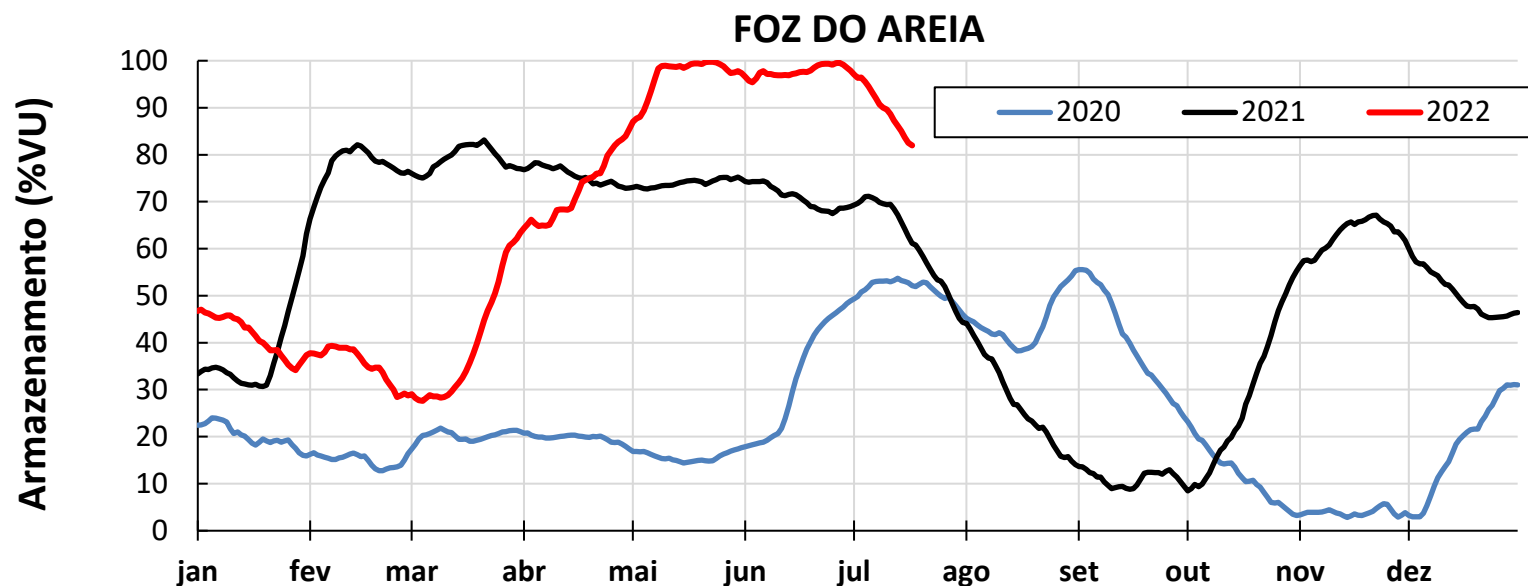



## Situação de armazenamento dos principais reservatórios dos subsistemas Sul e Sudeste/Centro-Oeste





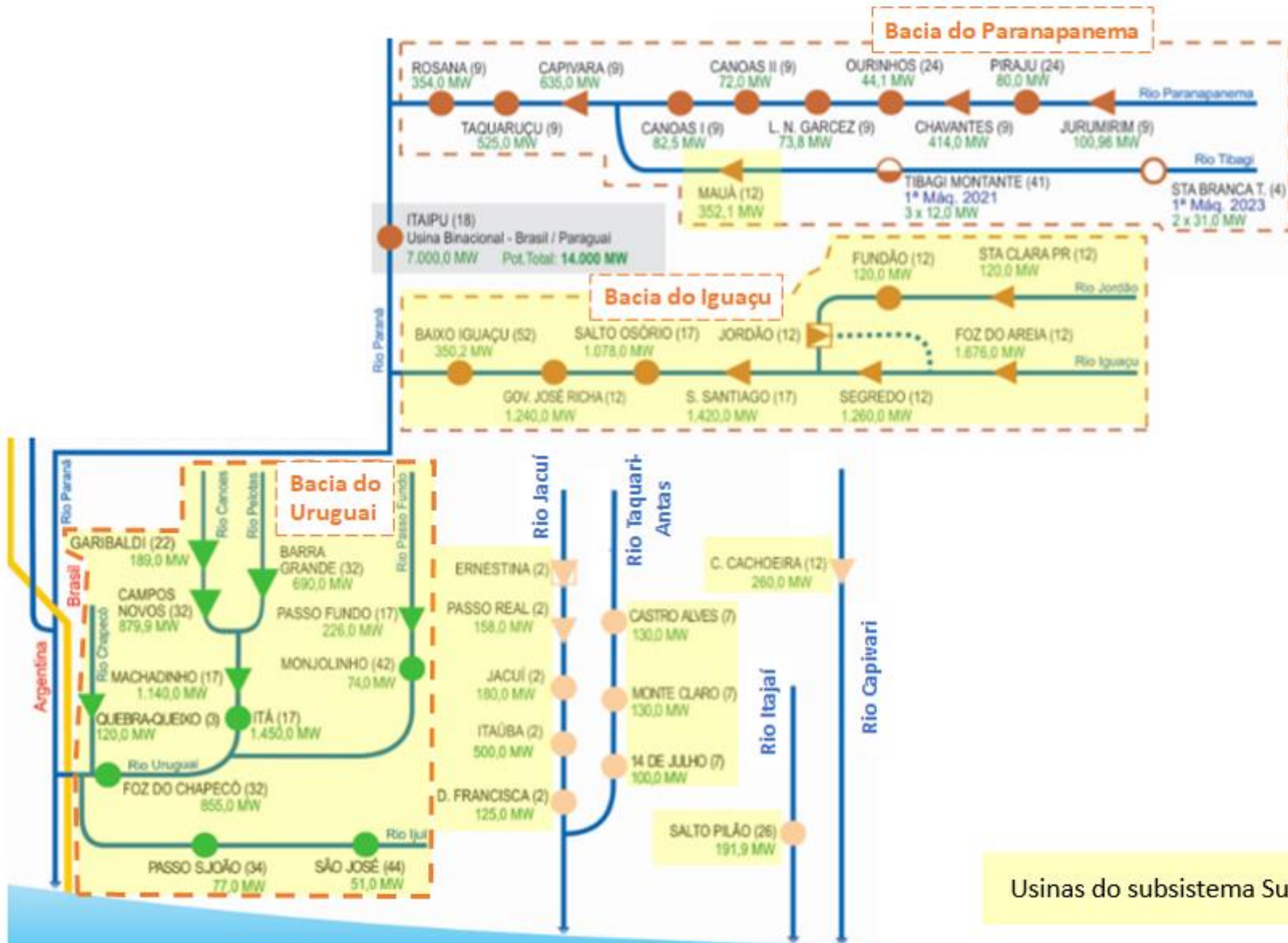
Situação de armazenamento dos principais reservatórios das bacias dos rios Iguaçu e Uruguai entre 2020 e 2022





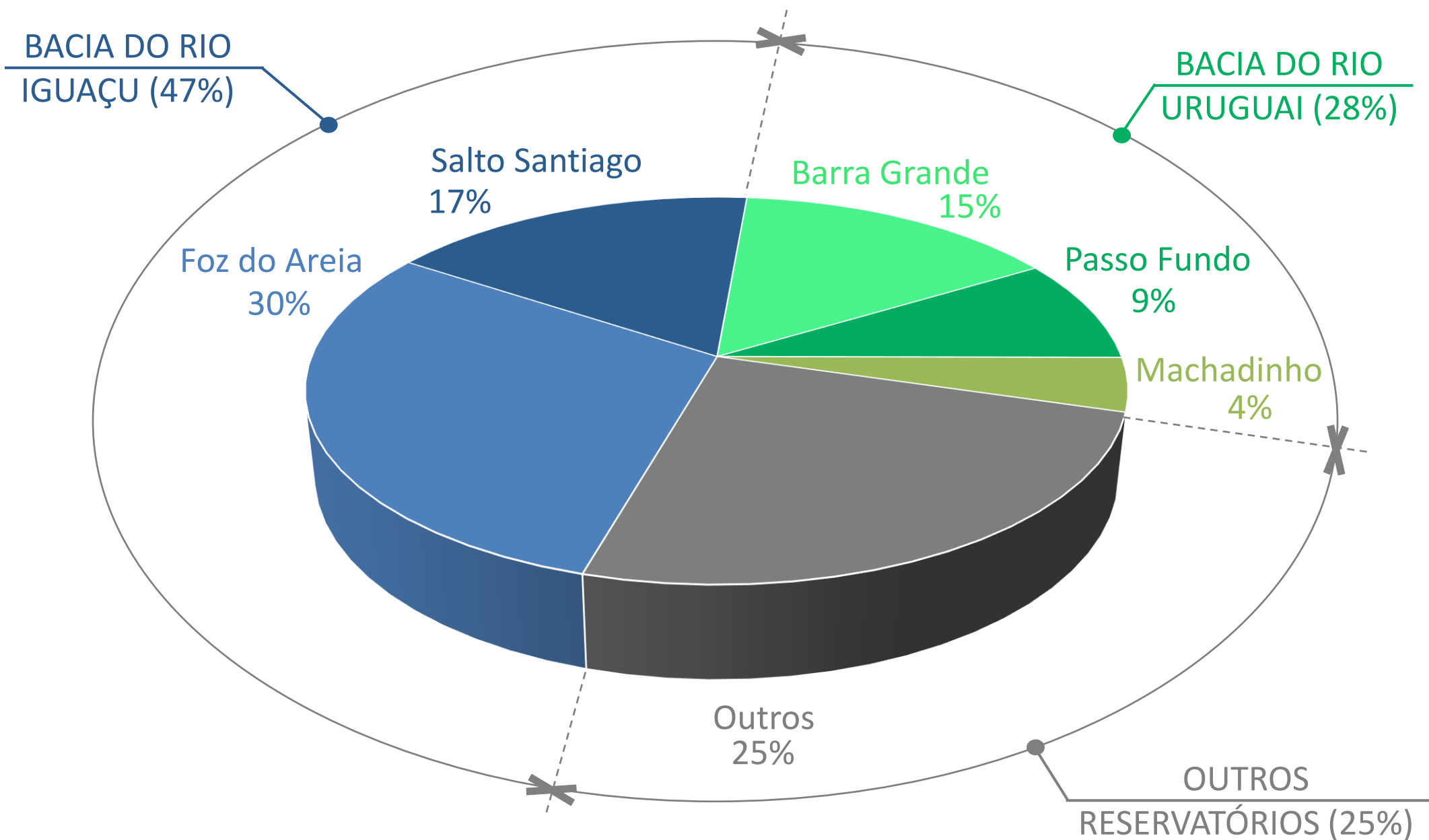
# CONDIÇÕES HIDROLÓGICAS E ARMAZENAMENTOS NO SUBSISTEMA SUL

# DIAGRAMA ESQUEMÁTICO DAS USINAS HIDROELÉTRICAS

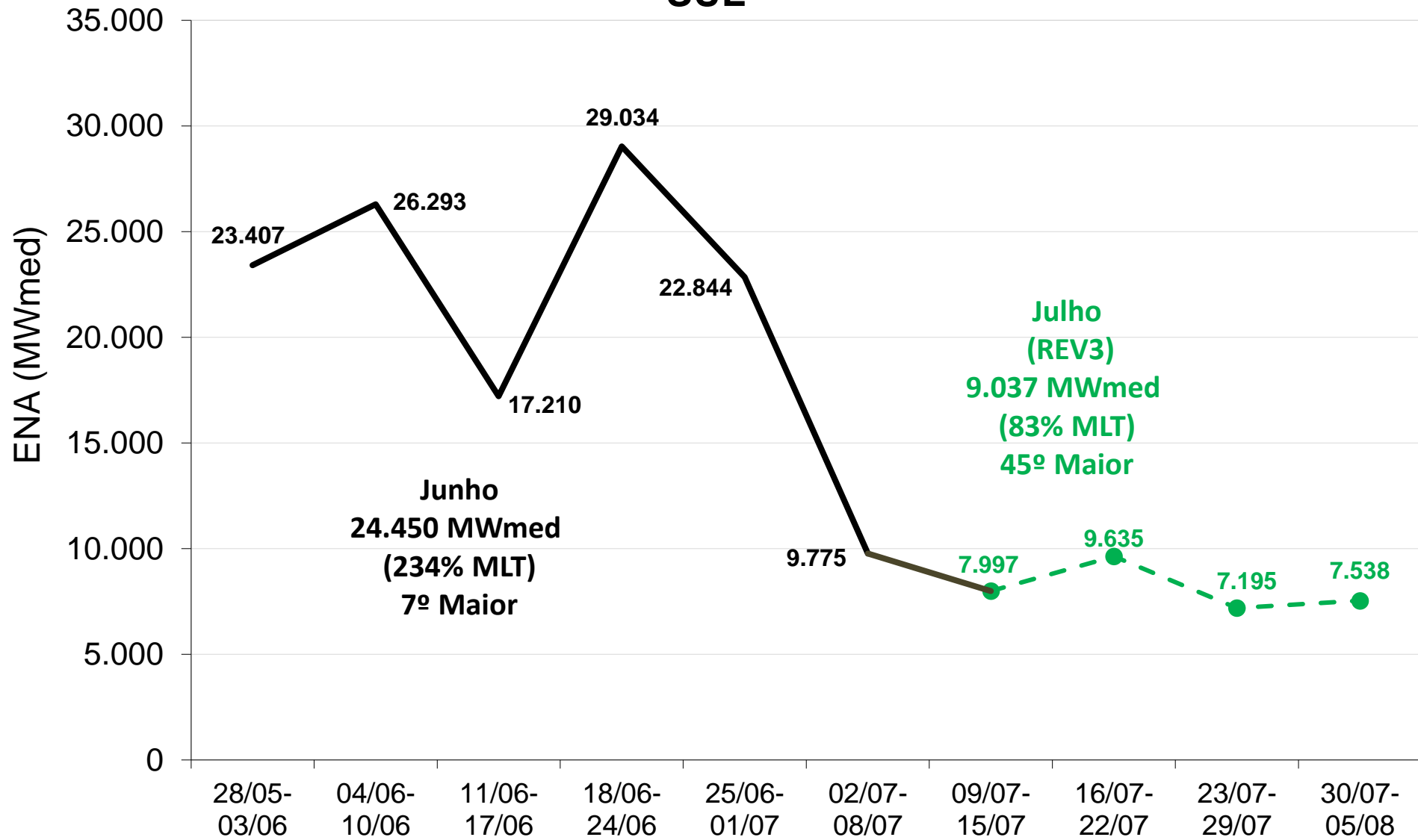


## PARTICIPAÇÃO DOS PRINCIPAIS RESERVATÓRIOS NA EAR<sub>máx</sub> DO SUBSISTEMA SUL

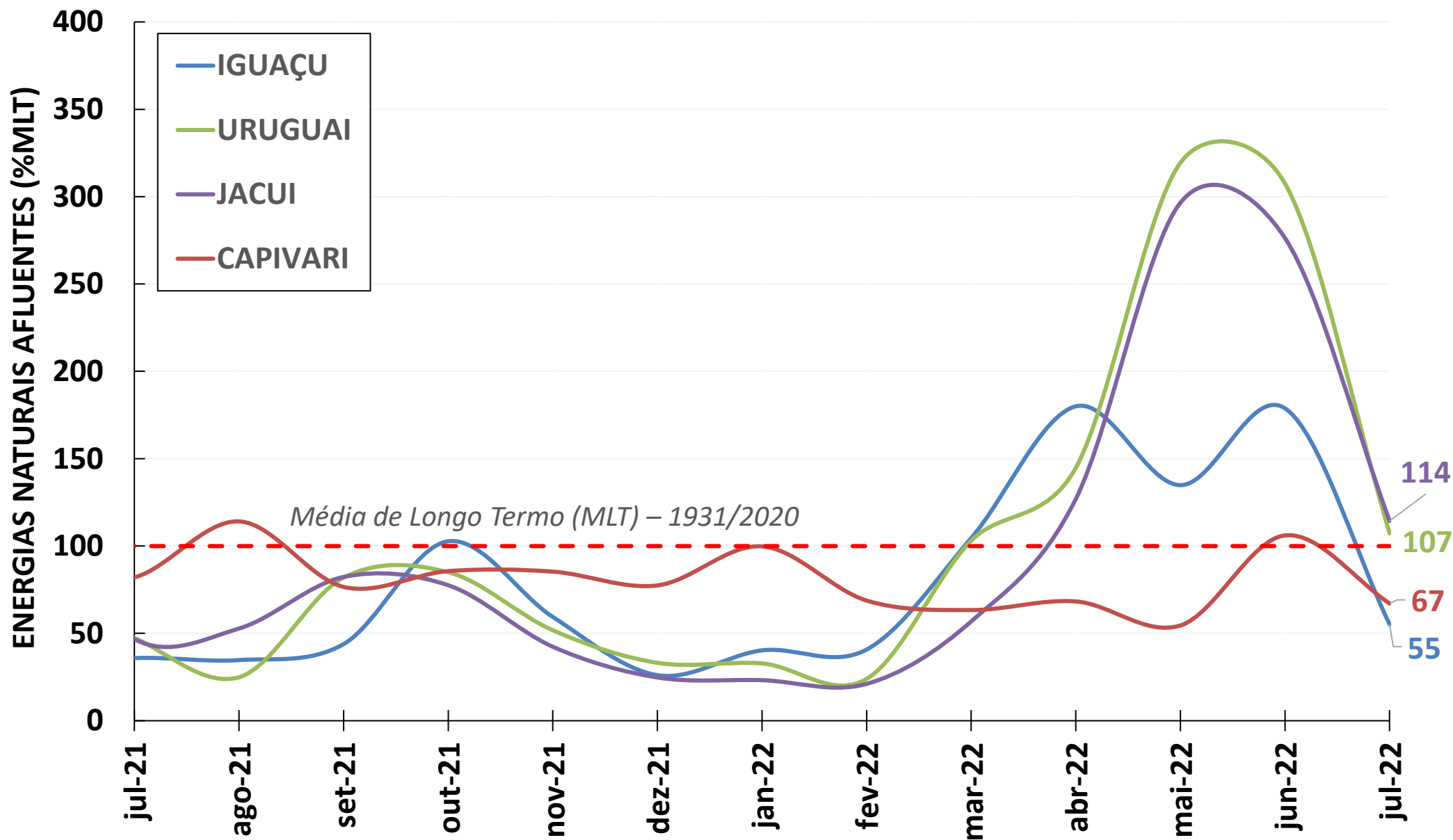
EAR<sub>máx</sub> DO SUBSISTEMA SUL = 19.897MWmed (7% da EAR<sub>máx</sub> do SIN)



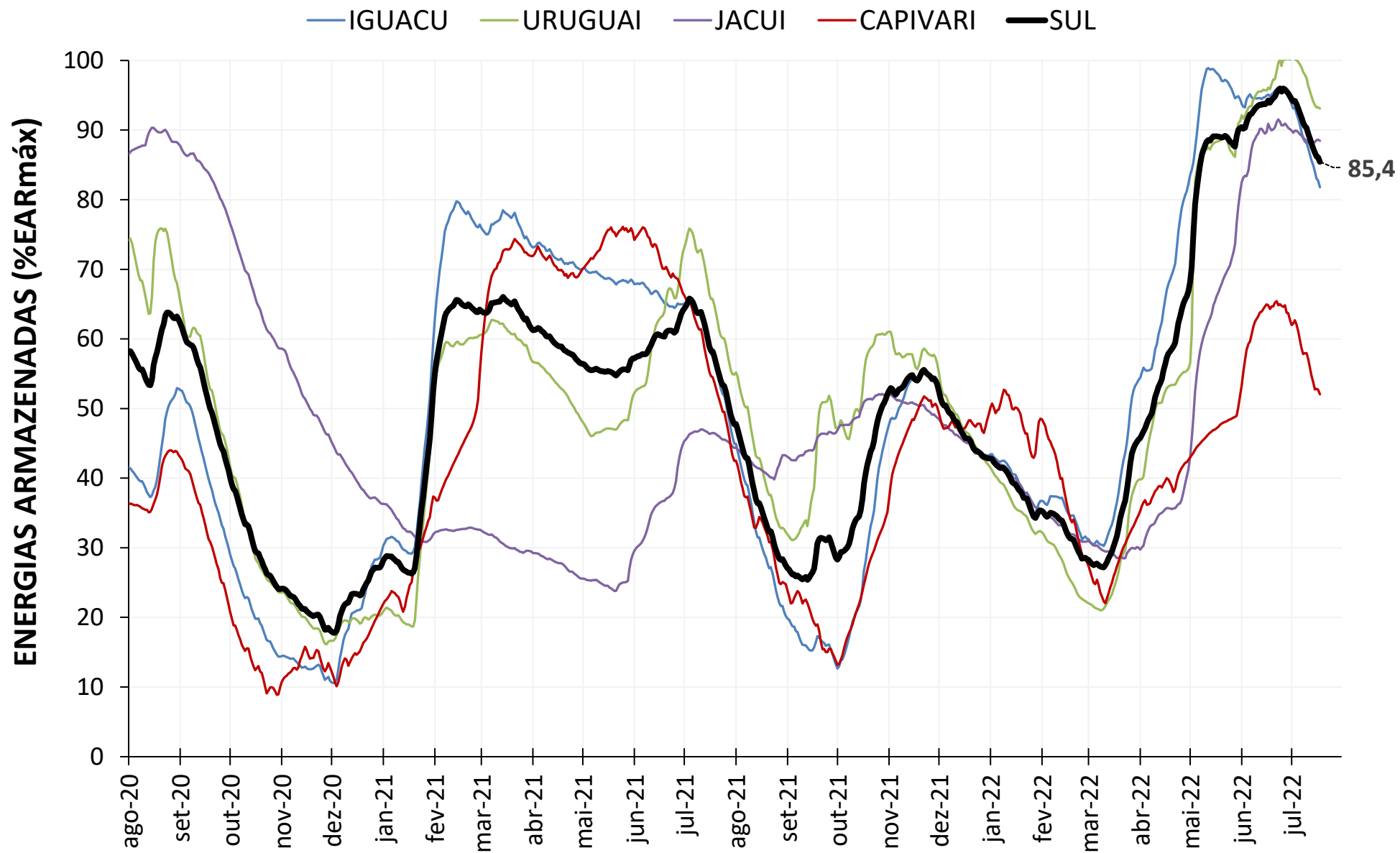
## SUL







**Nota:** (1) Dados até 18/07/2022.

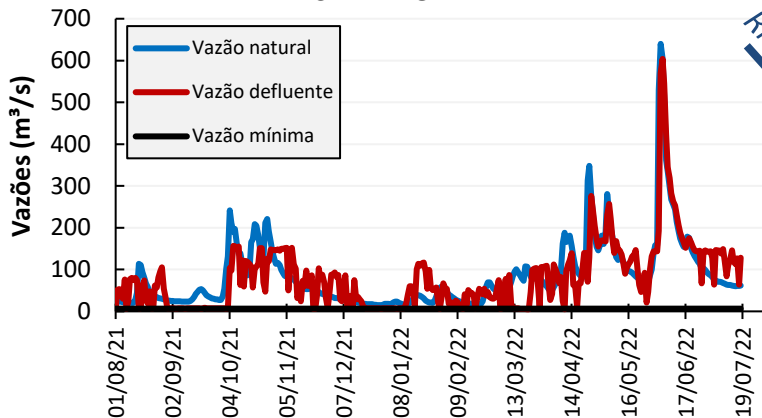


**Nota:** (1) Valores consolidados pelo ONS; (2) Período do gráfico: 01/08/2020 a 18/07/2022.

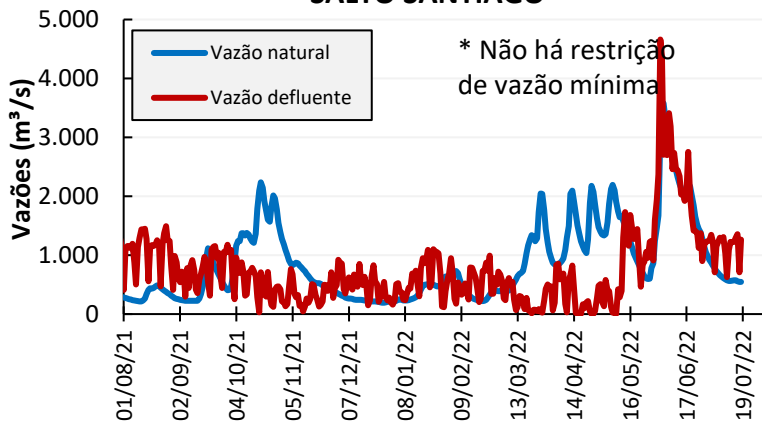


# OPERAÇÃO DOS PRINCIPAIS RESERVATÓRIOS

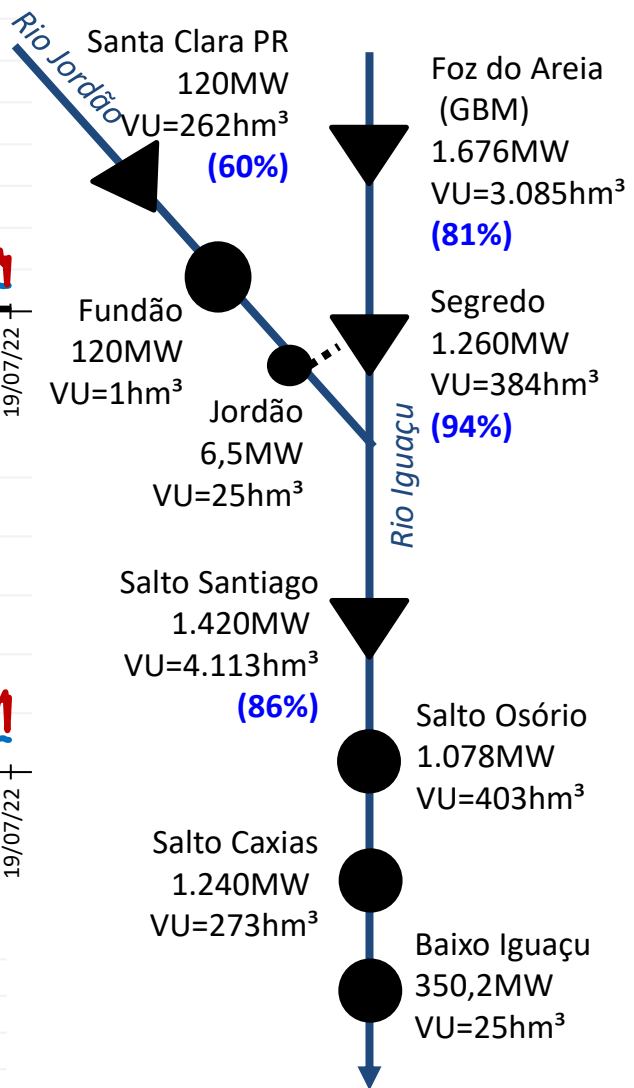
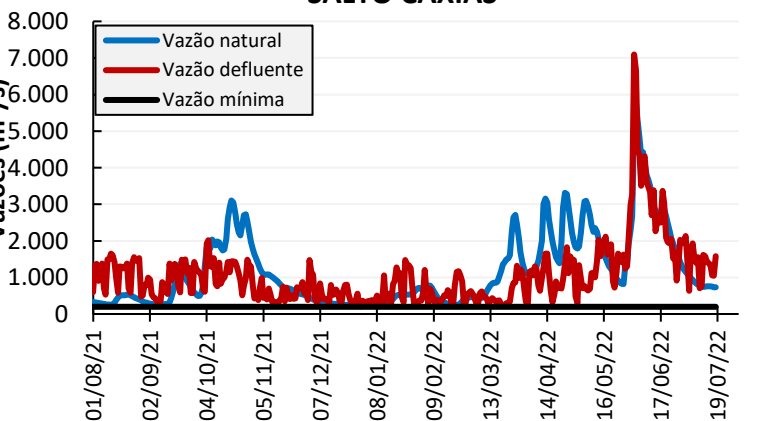
### SANTA CLARA PR



### SALTO SANTIAGO



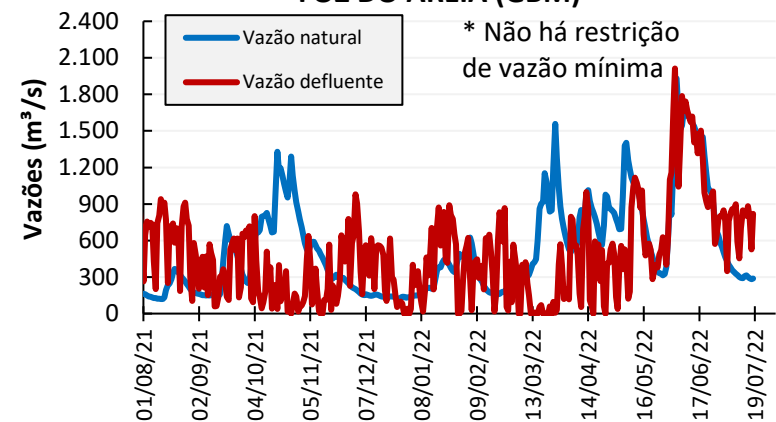
### SALTO CAXIAS



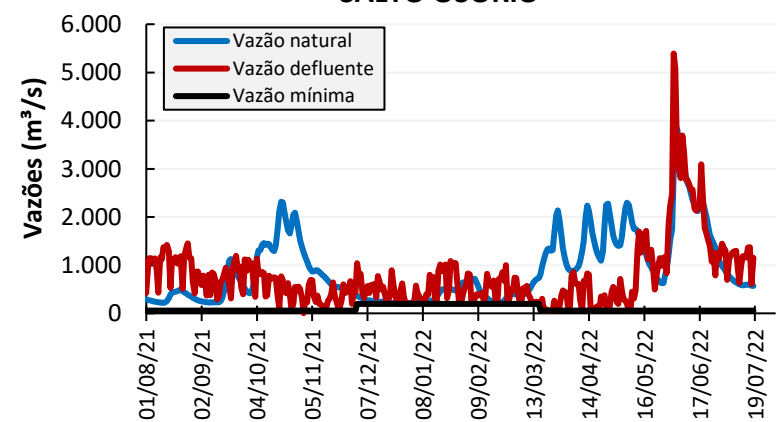
▼ UHEs com reservatório  
 ● UHEs a fio d'água

**Observações:** 1) Gráficos até dia 18/07; e 2) % VUs do IPDO de 18/07/2022.

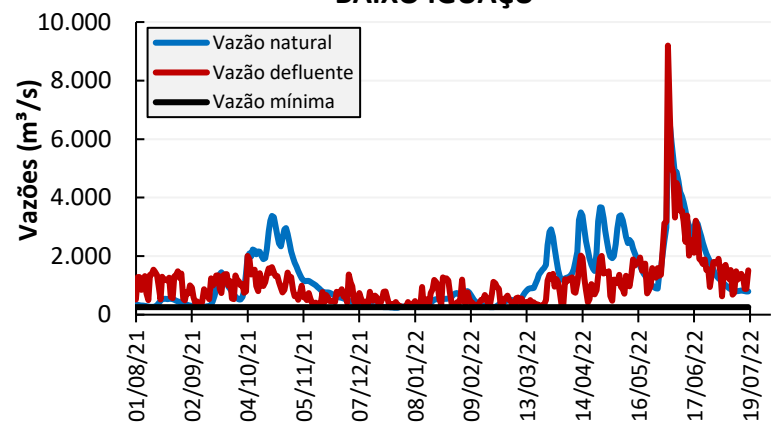
### FOZ DO AREIA (GBM)



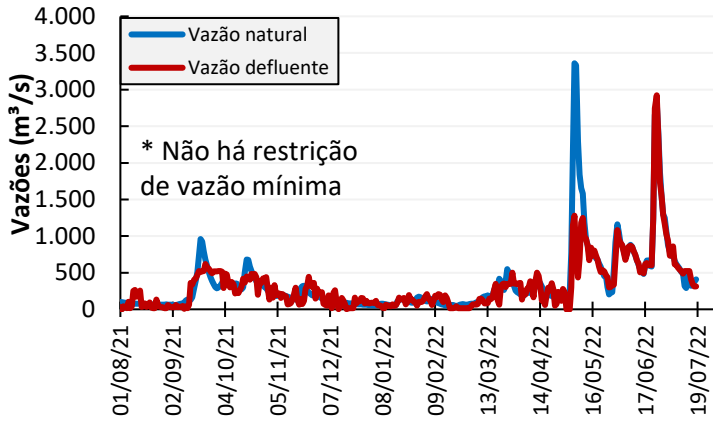
### SALTO OSÓRIO



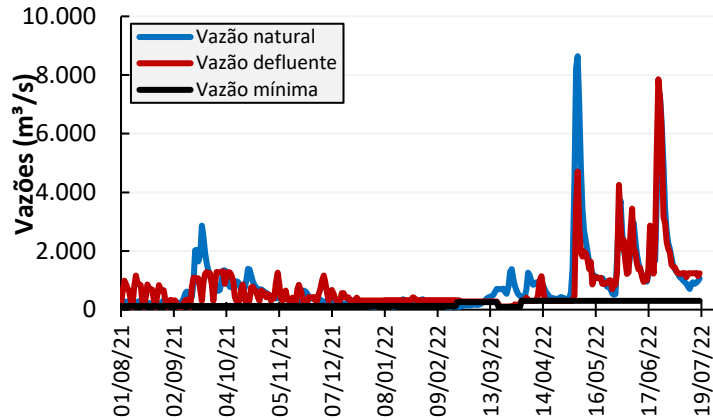
### BAIXO IGUAÇU



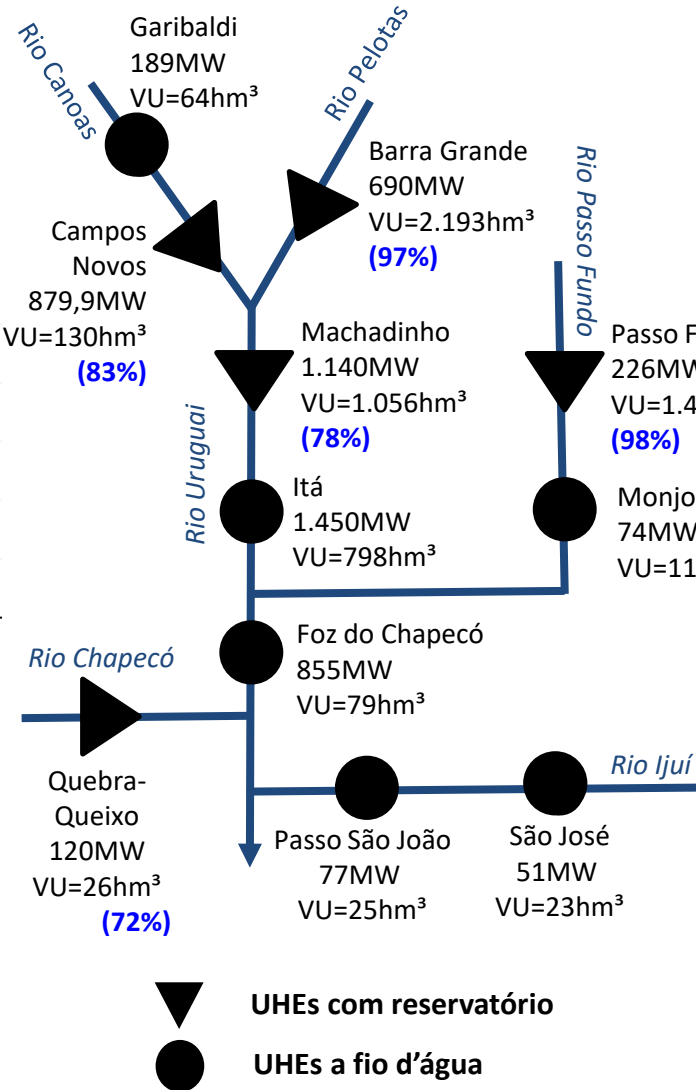
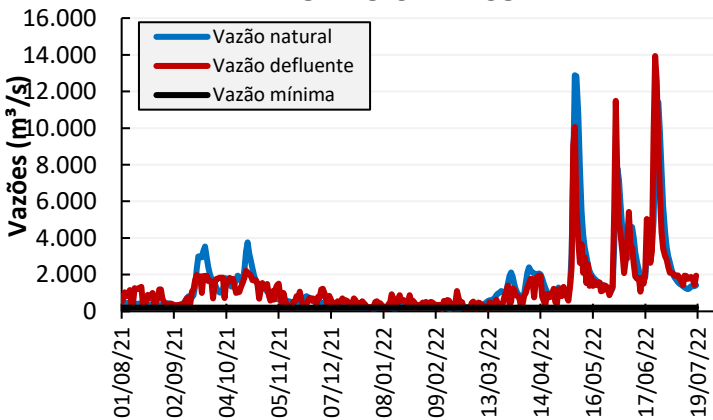
### CAMPOS NOVOS



### MACHADINHO

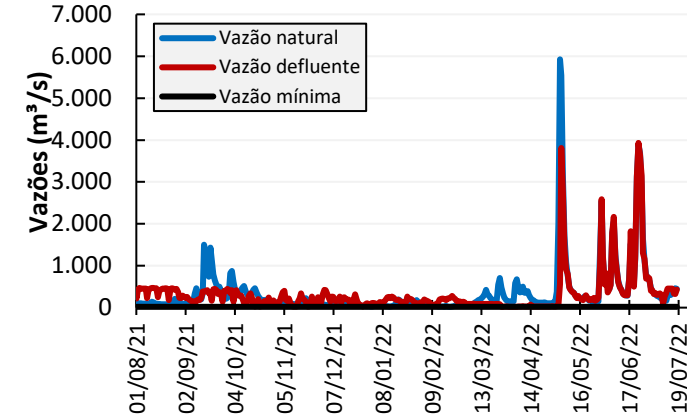


### FOZ DO CHAPECÓ

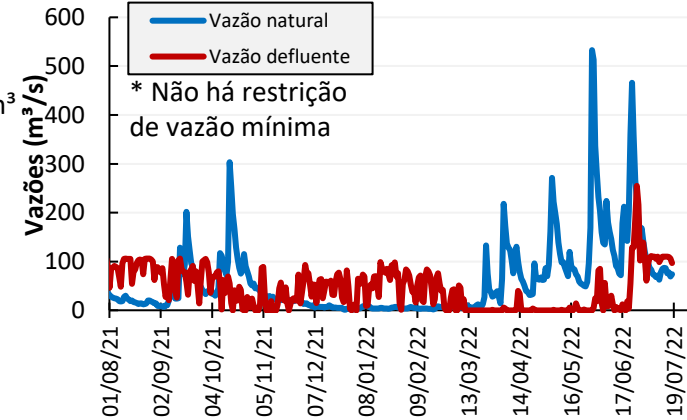


**Observações:** 1) Gráficos até dia 18/07; e 2) % VUs do IPDO de 18/07/2022.

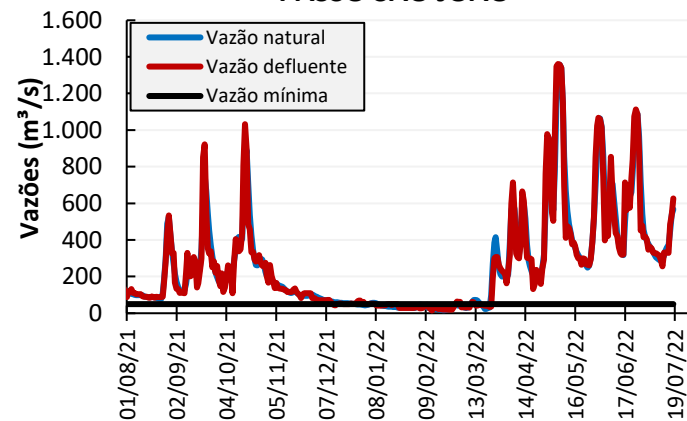
### BARRA GRANDE



### PASSO FUNDO



### PASSO SÃO JOÃO

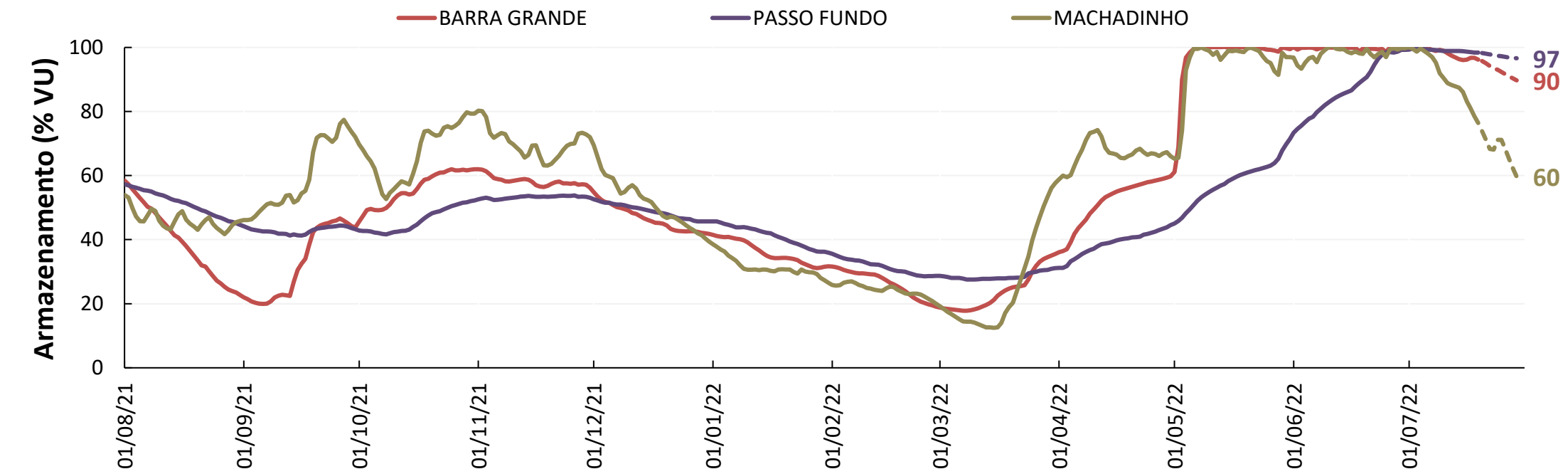
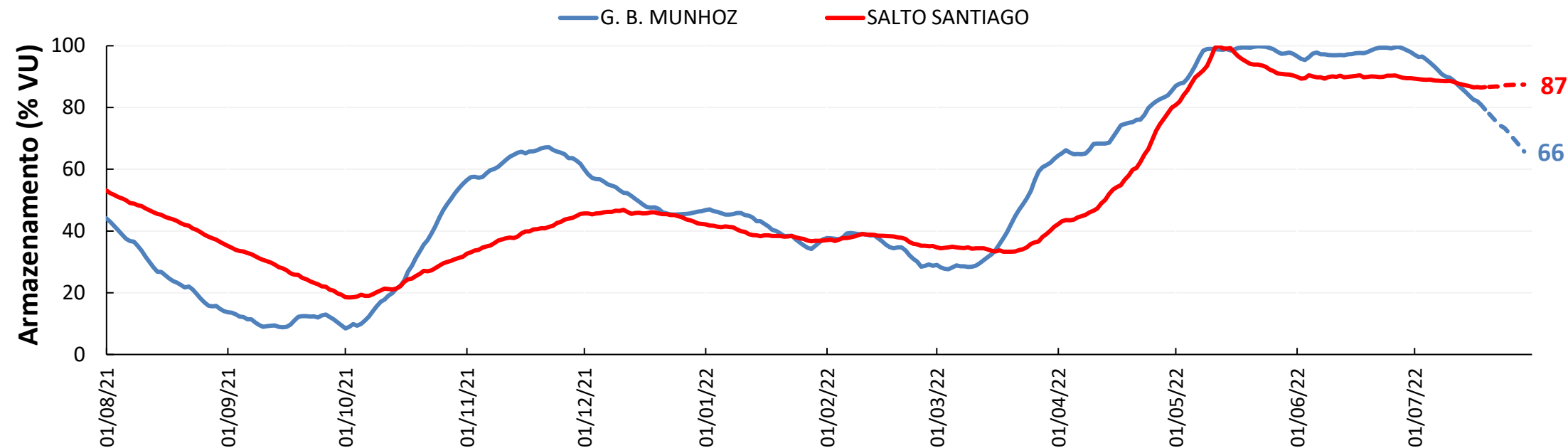






# RESULTADOS DAS SIMULAÇÕES HIDRÁULICAS

# RESULTADOS DAS SIMULAÇÕES – 20/07/2022 a 29/07/2022



**Obs.** 1) Linha cheia – Dados observados; Linha tracejada – Simulação com previsão de vazões  
2) Regras operativas definidas a partir das afluências, atendendo às restrições operativas declaradas e necessidades energéticas do SIN.

# AVALIAÇÃO DAS CONDIÇÕES HIDROLÓGICAS E DE ARMAZENAMENTO DOS RESERVATÓRIOS DO SUBSISTEMA SUL

7ª Reunião da Sala de Crise da Região Sul  
20 de julho de 2022