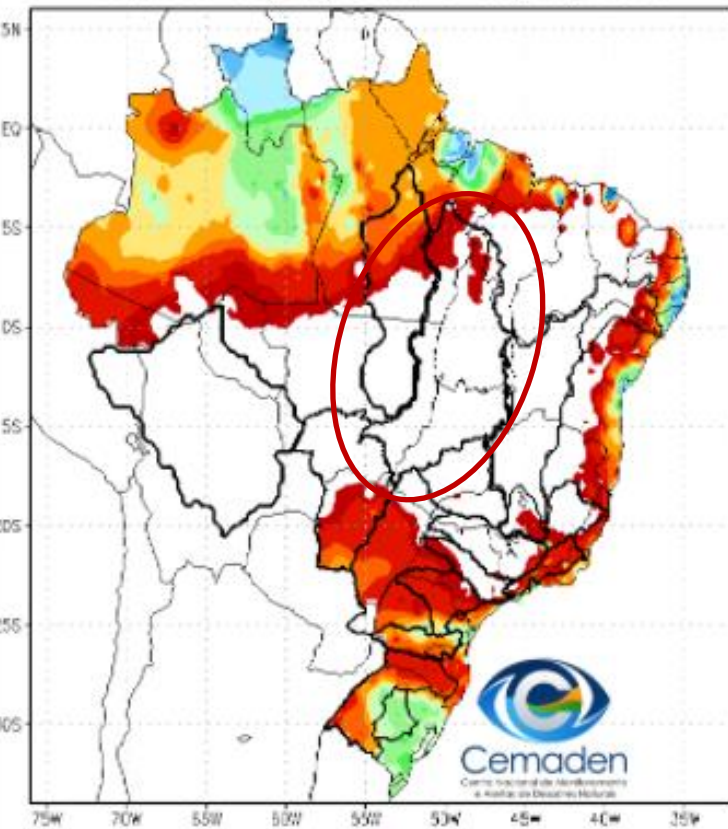


Monitoramento e Previsões para a Bacia do rio Tocantins

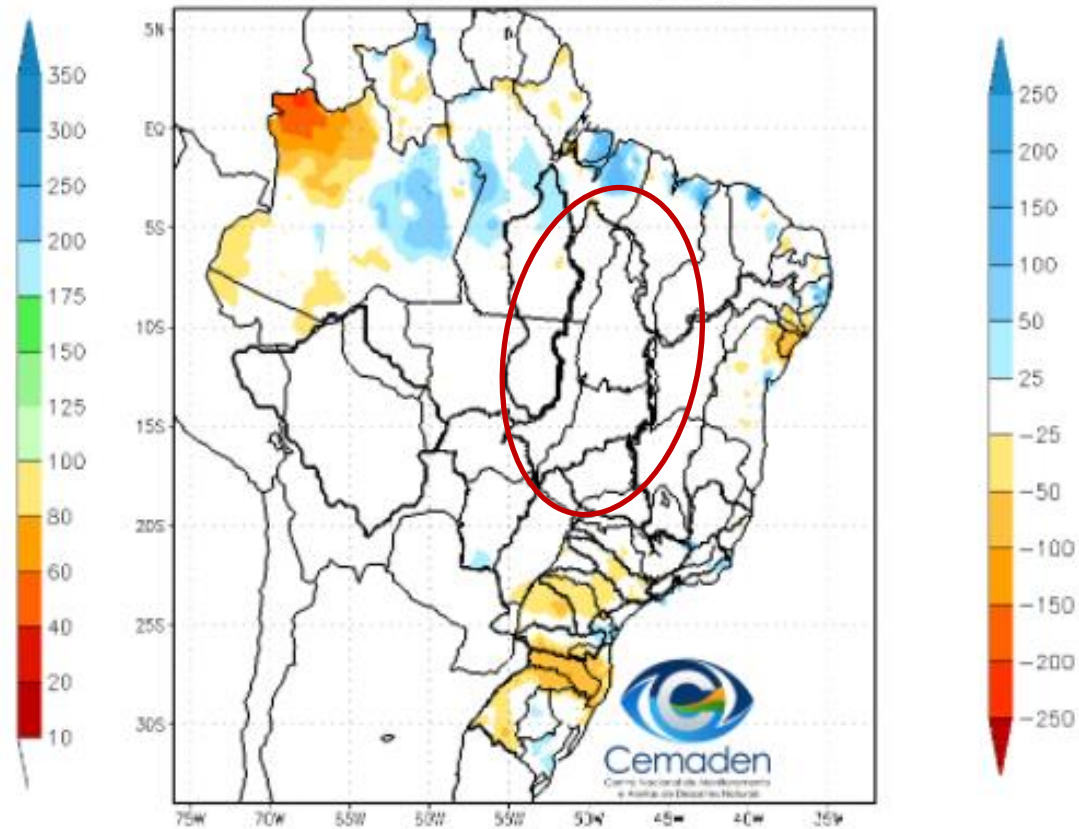


Precipitação acumulada nos últimos 30 dias

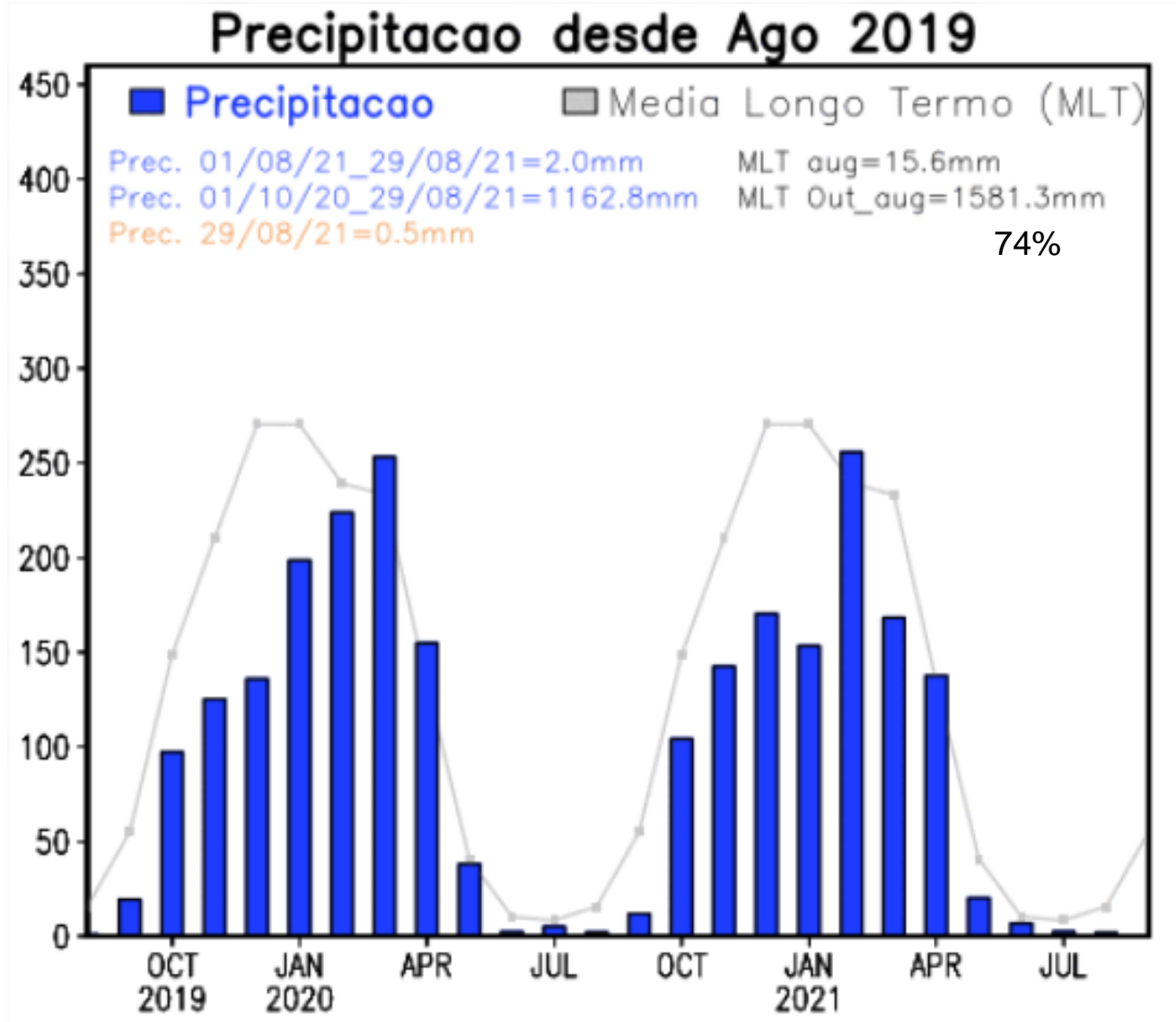
Precipitação Acumulada (mm) A.S.
Período: 31/07/2021 a 30/08/2021



Anomalia de Precipitação (mm) A.S.
Período: 31/07/2021 a 30/08/2021

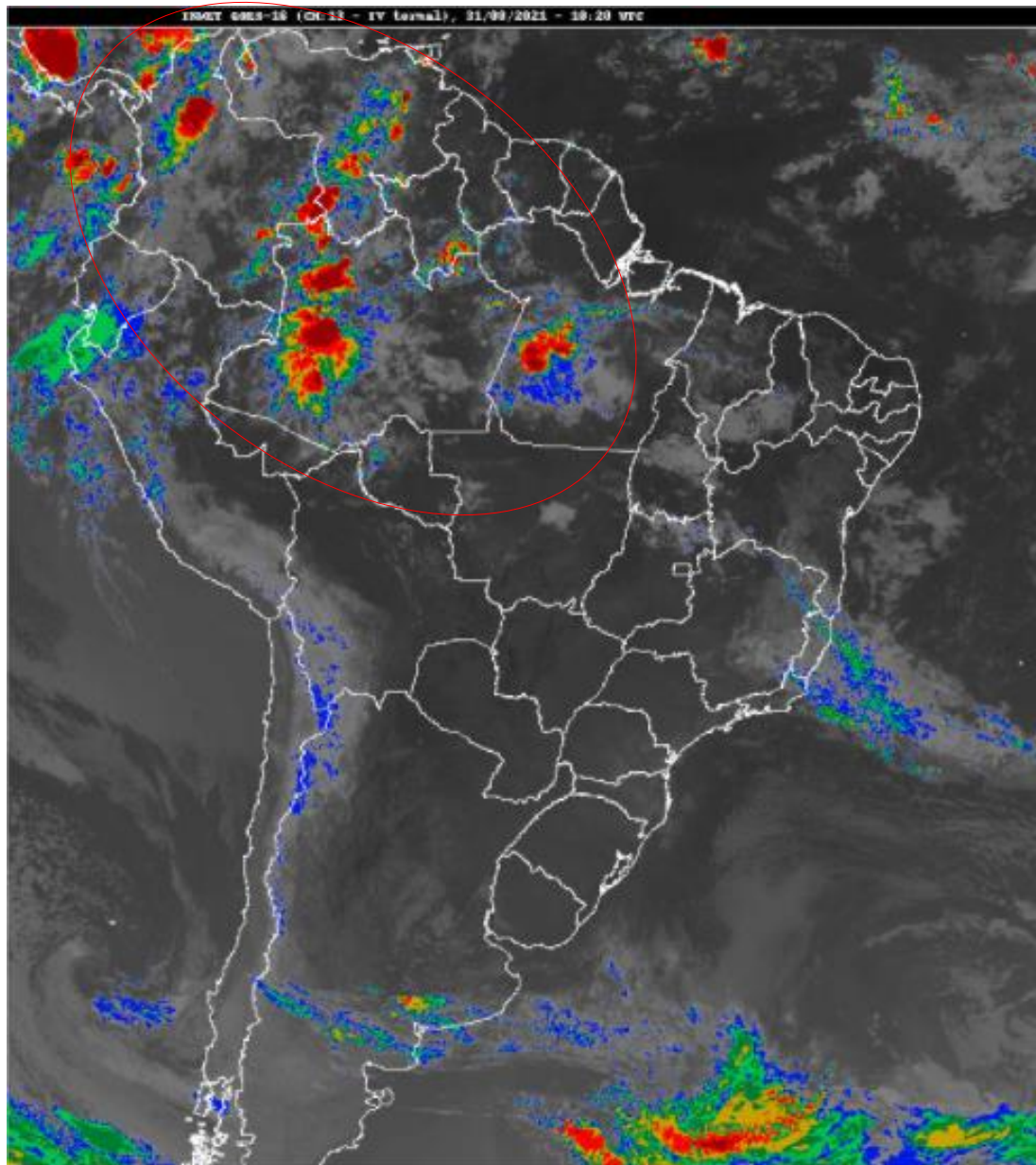


Evolução da Precipitação

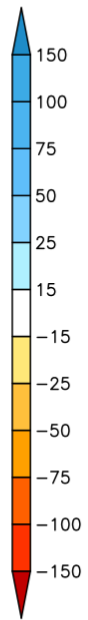
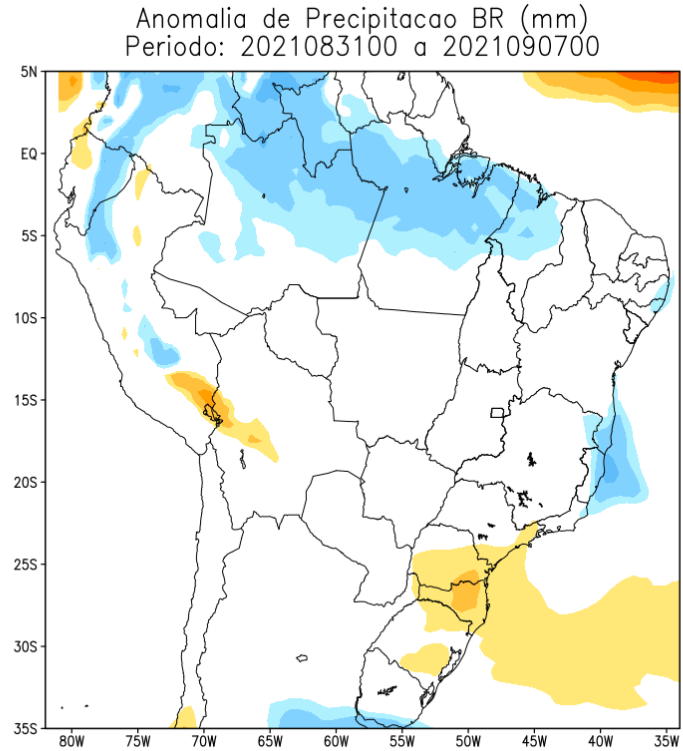
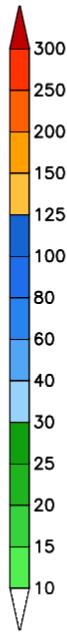
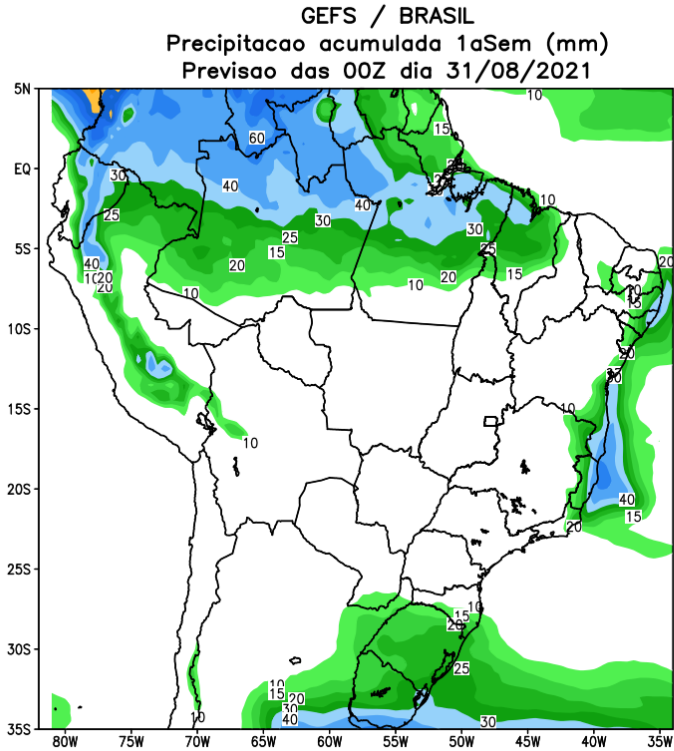


FONTE:
INPE

Situação meteorológica atual



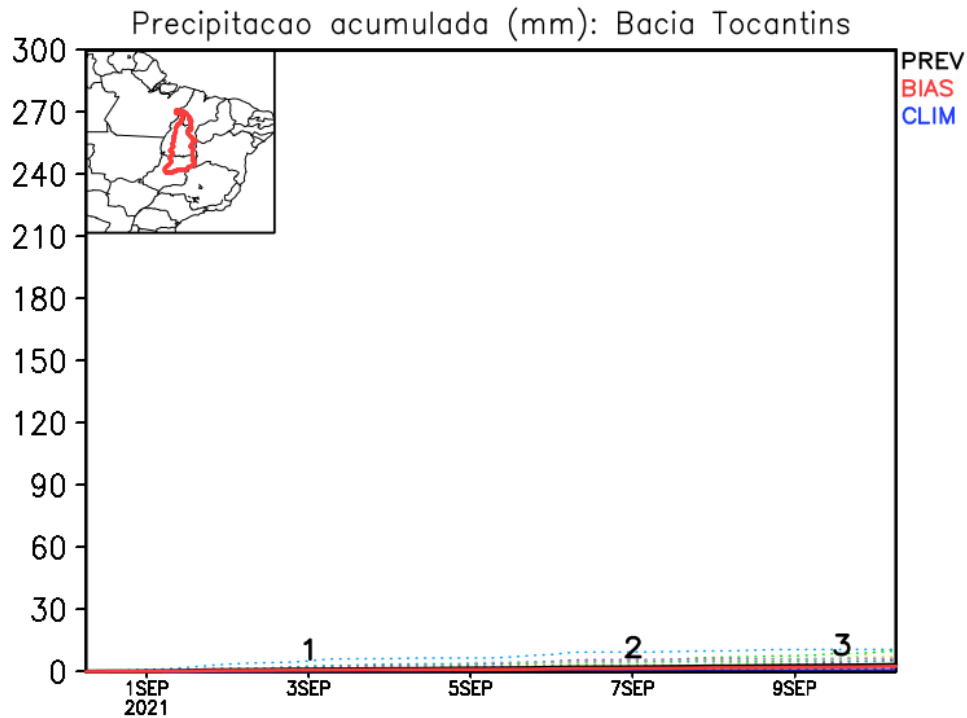
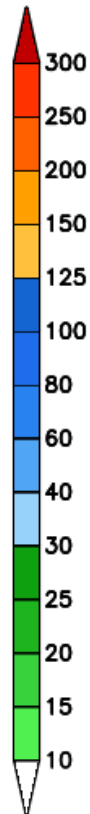
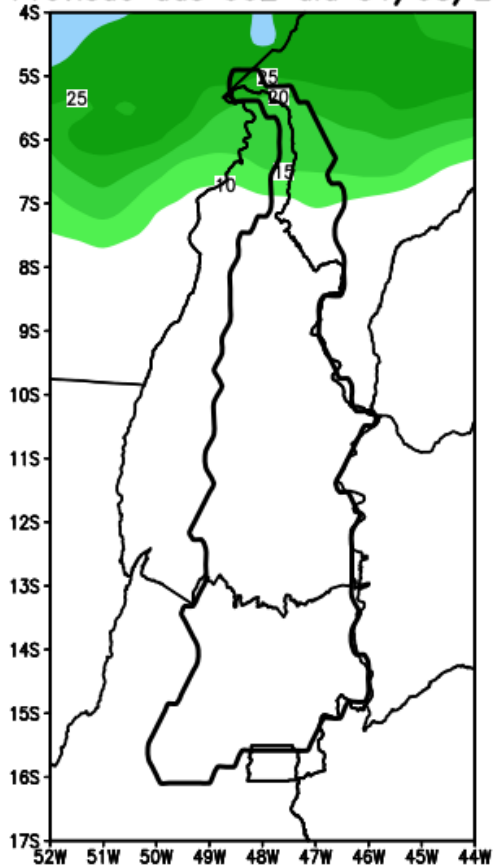
Previsão de chuva próximos 7 dias



Fonte: GFS/NOAA

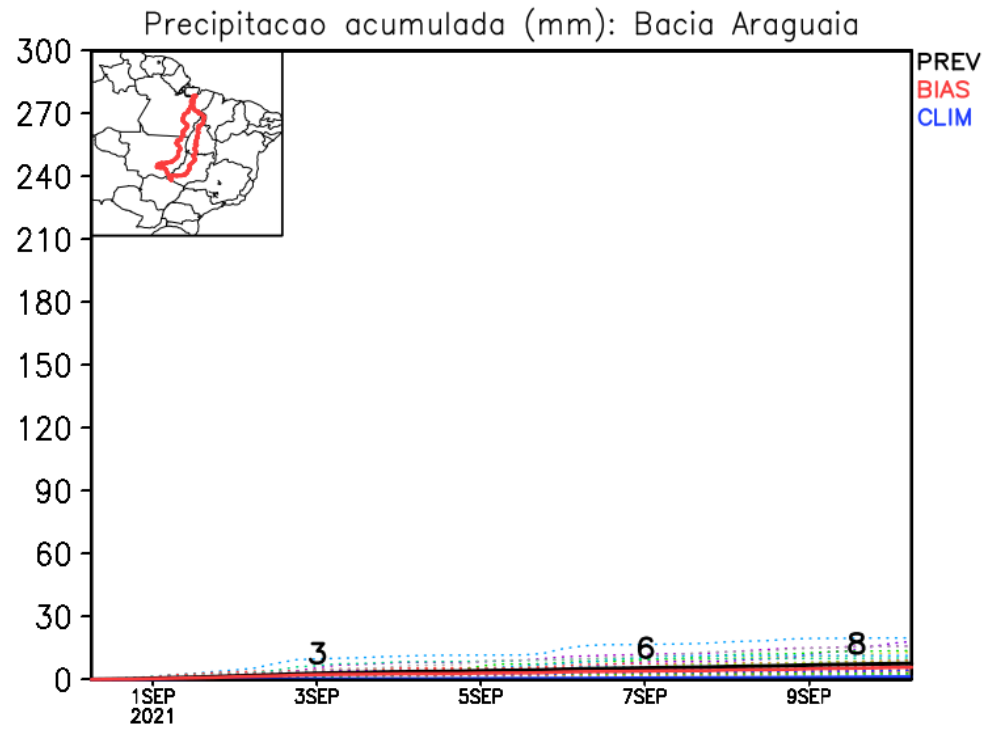
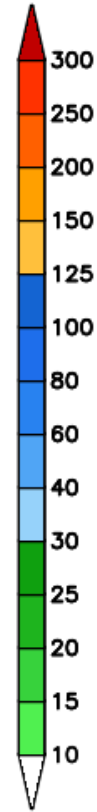
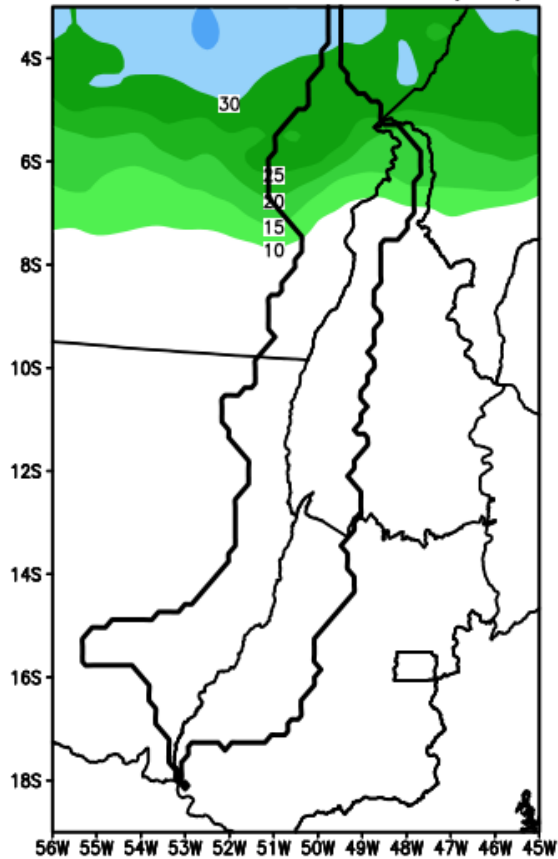
Previsão Bacia Rio Tocantins

GEFS / Bacia Tocantins
Precipitacao acumulada em 7 dias (mm)
Previsao das 00Z dia 31/08/2021



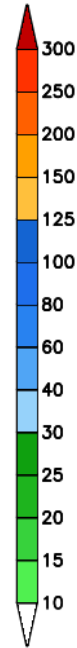
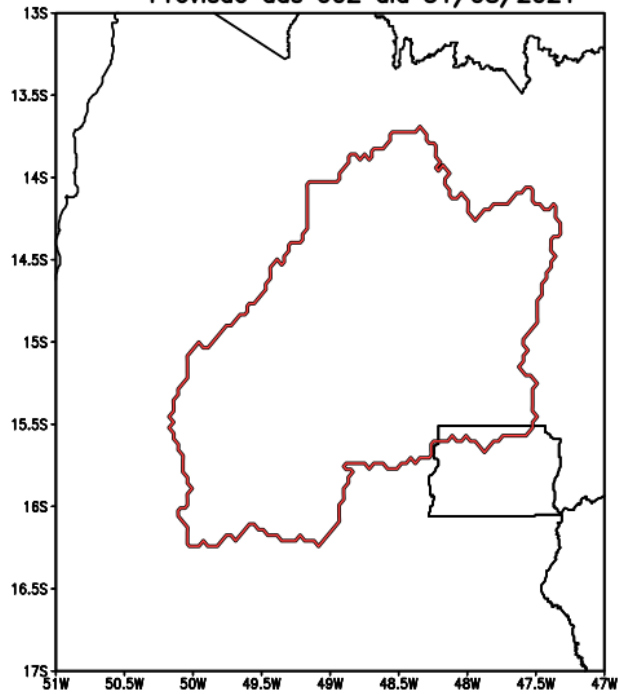
Previsão Bacia Rio Araguaia

GEFS / Bacia do Rio Araguaia
Precipitação acumulada em 7 dias (mm)
Previsão das 00Z dia 31/08/2021

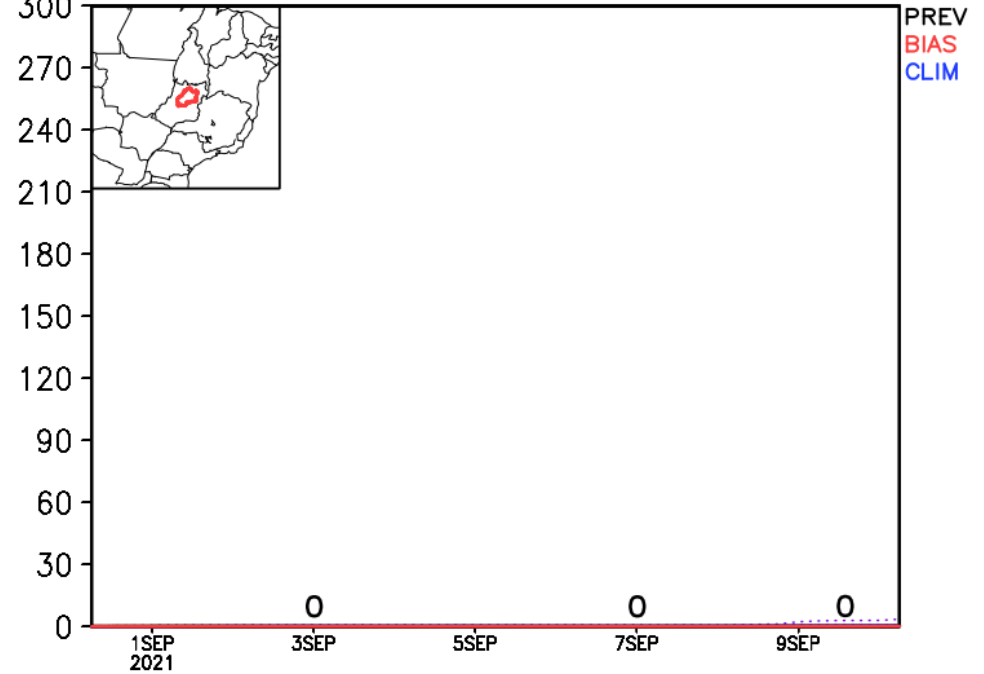


Previsão Bacia Serra da Mesa

GEFS / Bacia Serra da Mesa
Precipitacao acumulada em 7 dias (mm)
Previsao das 00Z dia 31/08/2021

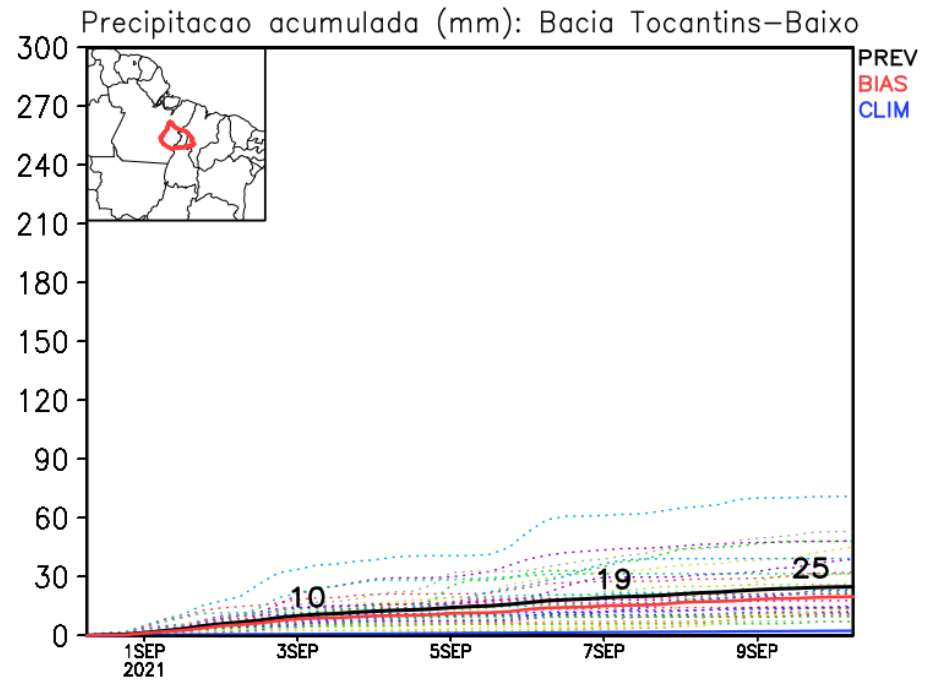
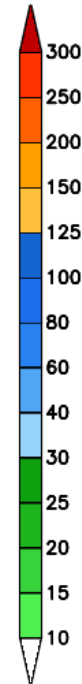
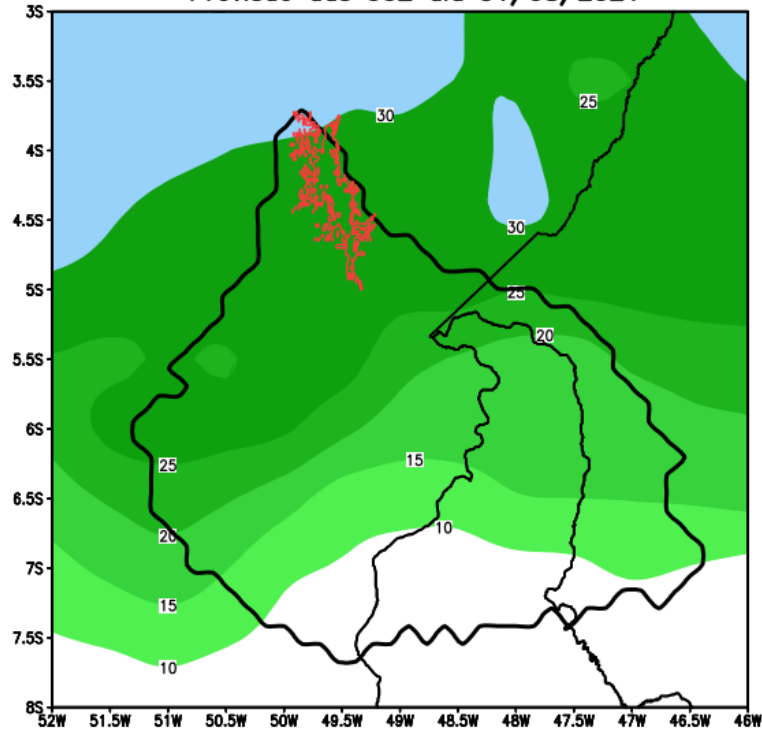


Precipitacao acumulada (mm): Bacia SerradaMesa



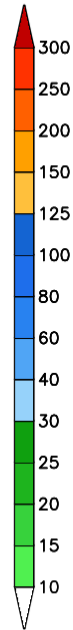
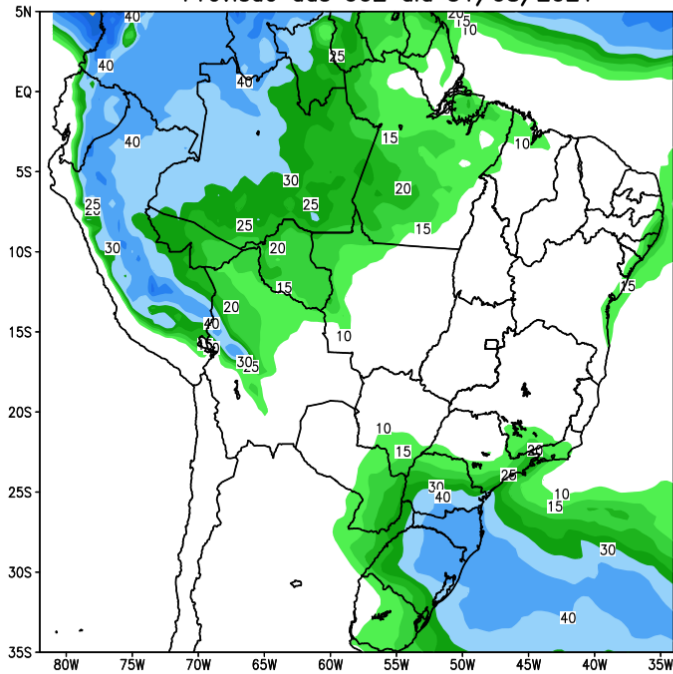
Previsão Bacia Tocantins-Araguaia (Baixo)

GEFS / Bacia Baixo Tocantins
Precipitacao acumulada em 7 dias (mm)
Previsao das 00Z dia 31/08/2021

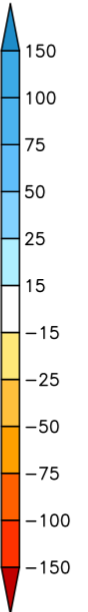
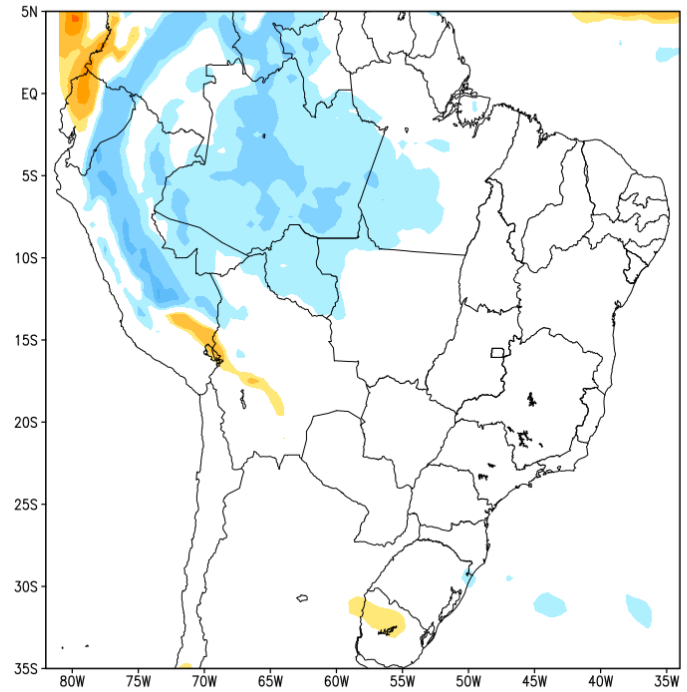


Tendência para a 2a Semana

GEFS / BRASIL
Precipitacao acumulada 2aSem (mm)
Previsao das 00Z dia 31/08/2021

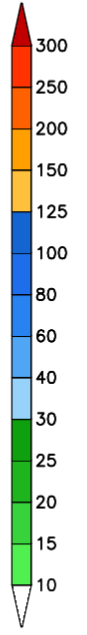
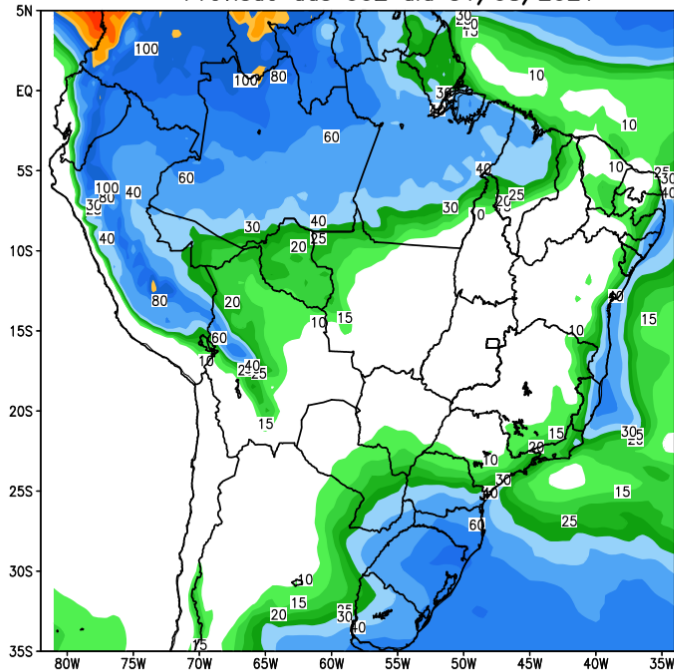


Anomalia de Precipitacao BR (mm)
Periodo: 2021090800 a 2021091400

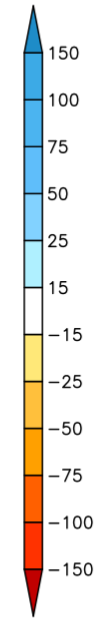
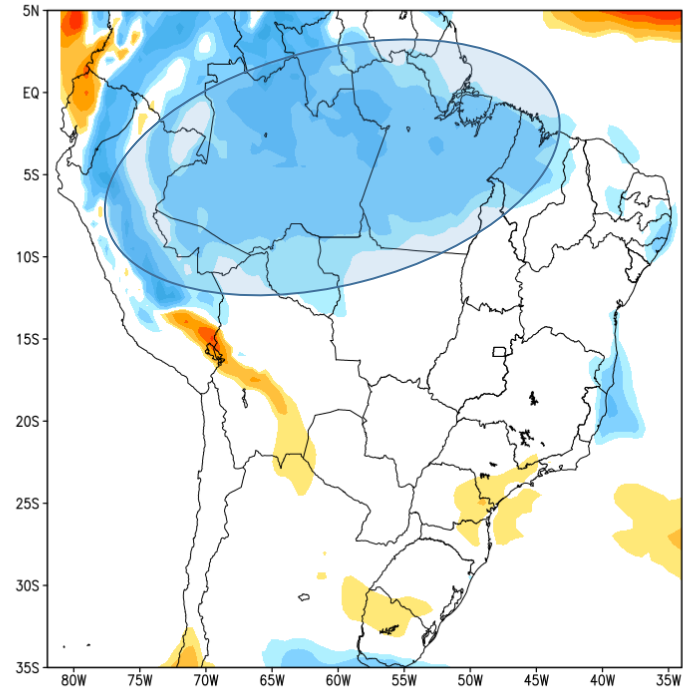


Tendência para as próximas duas semanas

GEFS / BRASIL
Precipitacao acumulada 14dias (mm)
Previsao das 00Z dia 31/08/2021



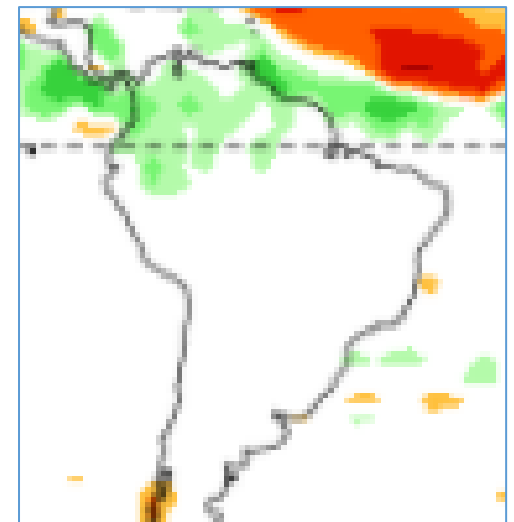
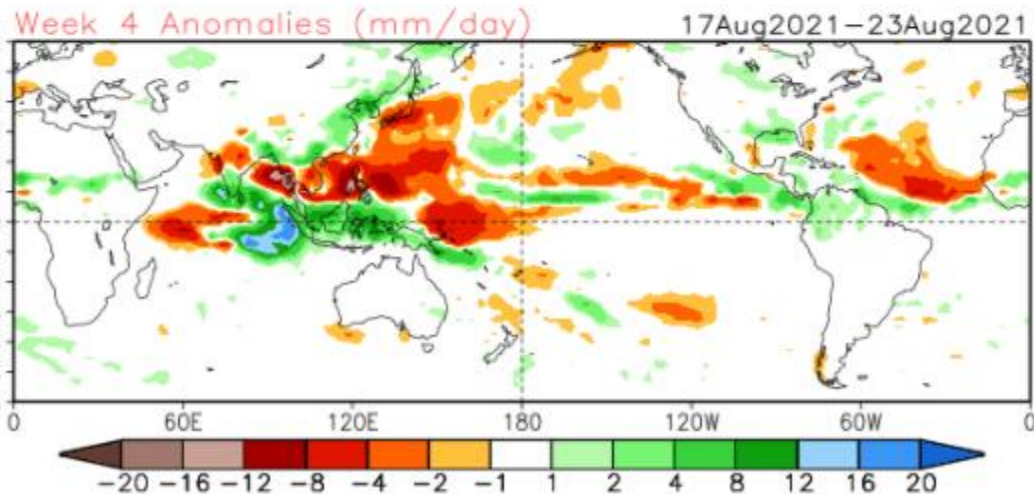
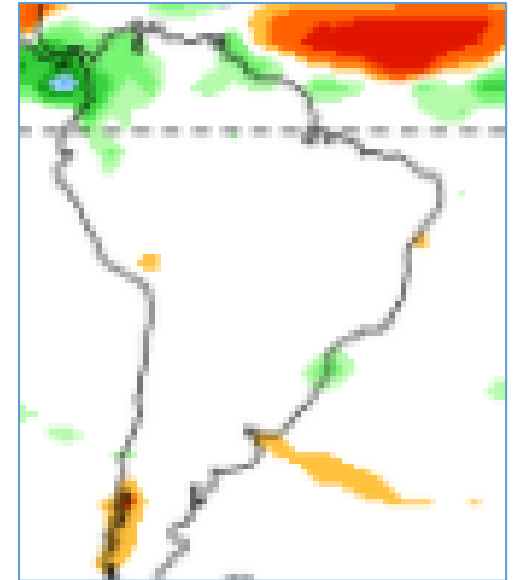
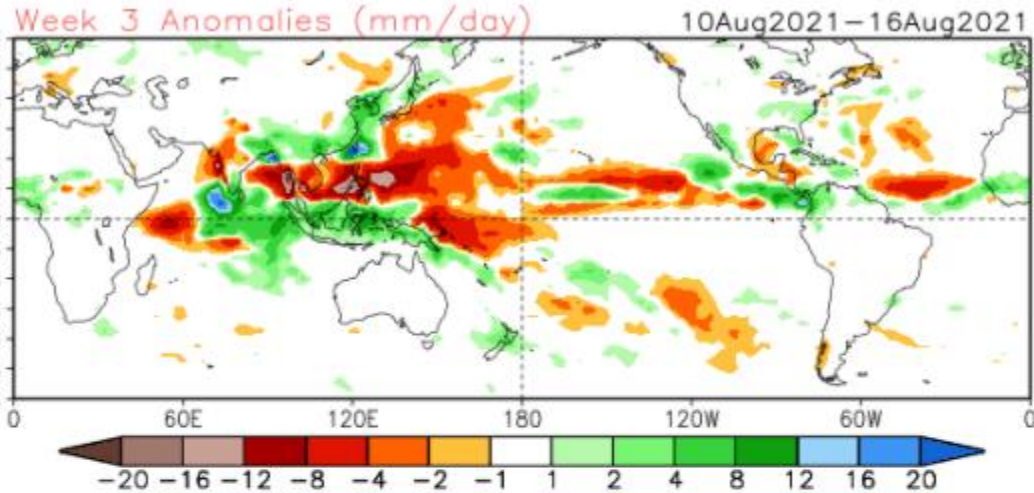
Anomalia de Precipitacao BR (mm)
Periodo: 2021083100 a 2021091400



Fonte: GFS/NOAA

Tendência 3a e 4a semanas

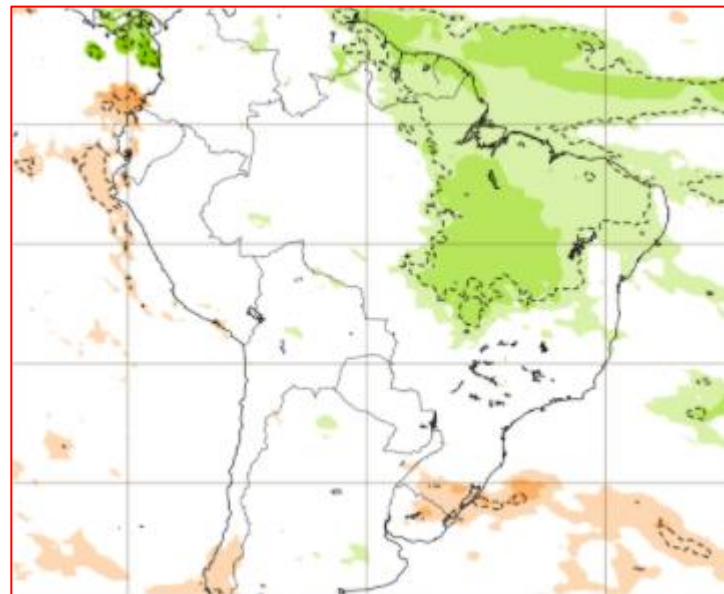
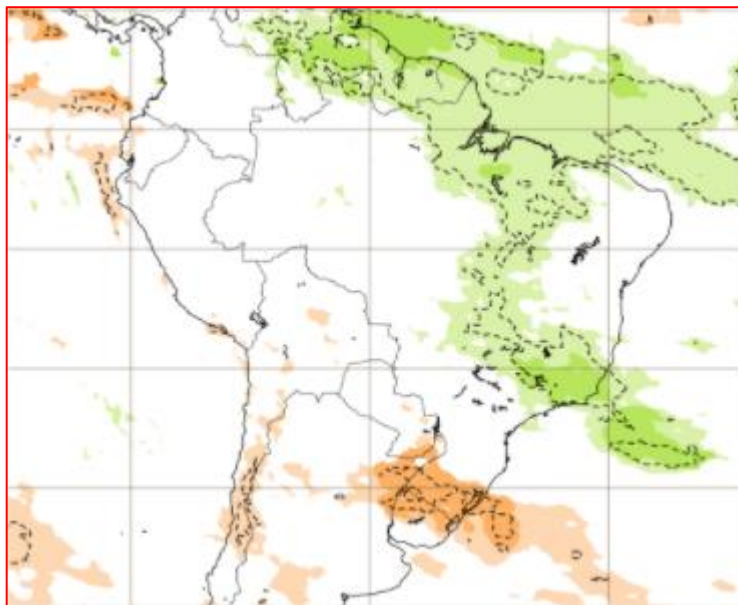
16 Member Ensemble Mean Forecast from 26Jul2021



Tendência para 5ª e 6ª semanas

27/09-04/10

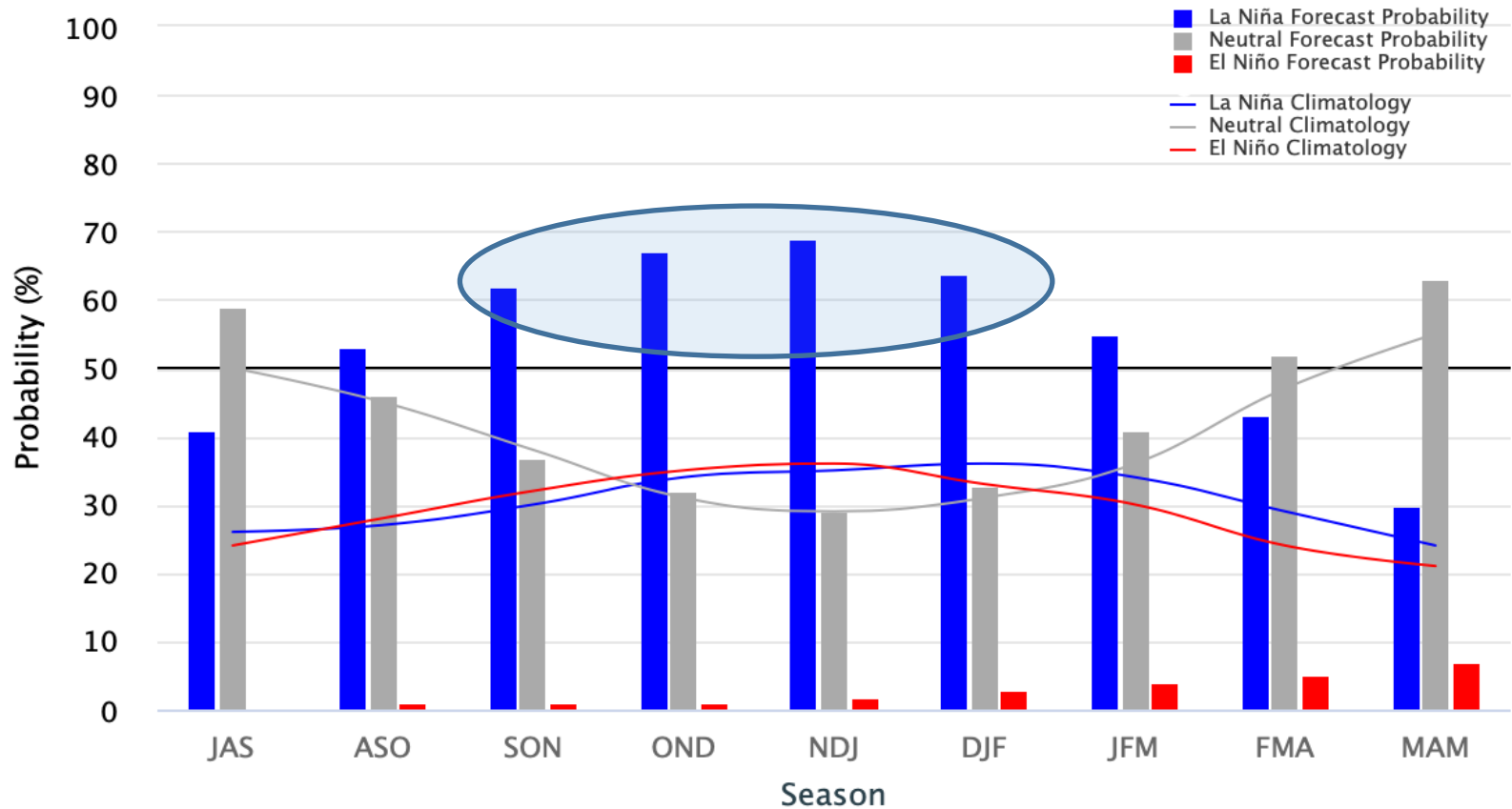
04-11/10



Previsão do “La Niña”

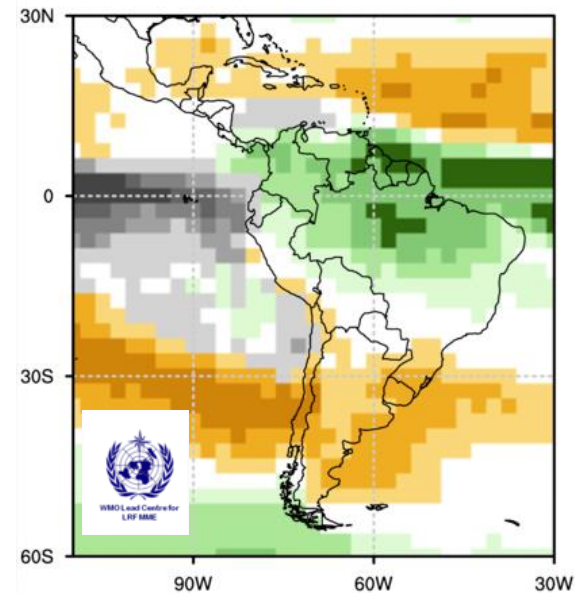
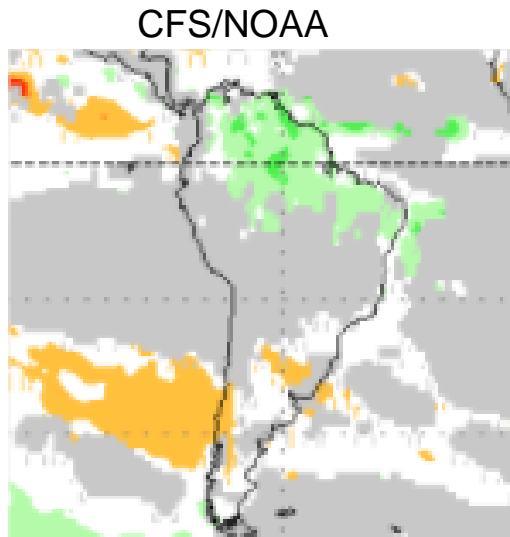
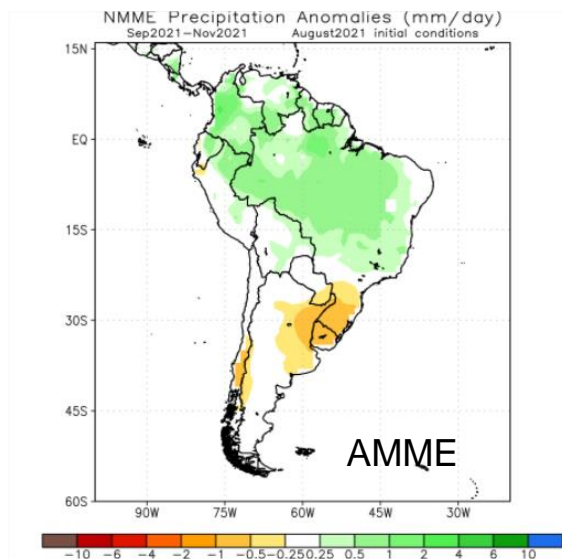
Early–August 2021 CPC/IRI Official Probabilistic ENSO Forecasts

ENSO state based on NINO3.4 SST Anomaly
Neutral ENSO: $-0.5\text{ }^{\circ}\text{C}$ to $0.5\text{ }^{\circ}\text{C}$

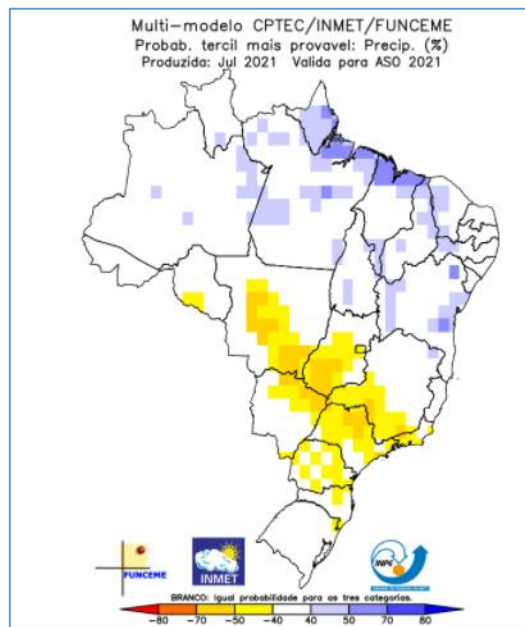
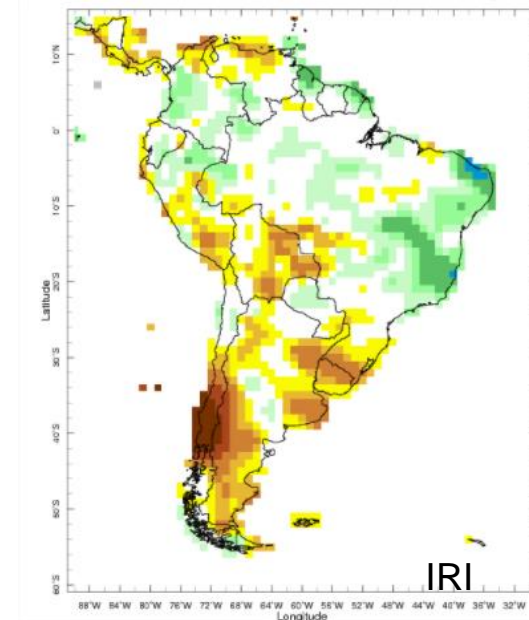


ENSO Alert System Status: **La Niña Watch**

Previsão Sazonal de chuva (SON)

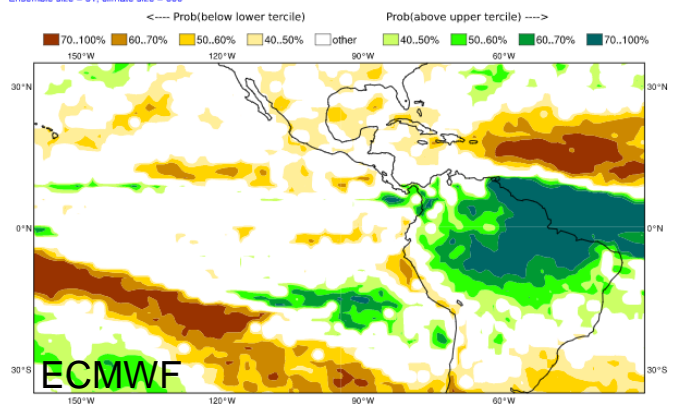


Sep-Nov 2021 IRI Seasonal Precipitation Forecast issued Aug 2021

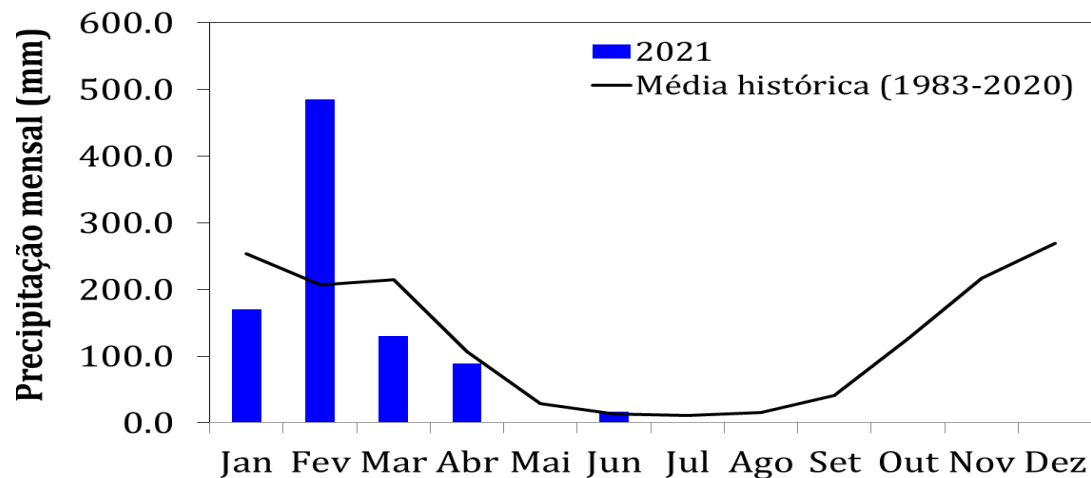


ECMWF Seasonal Forecast
Prob(most likely category of precipitation)
Forecast start is 01/08/21, climate period is 1993-2016
Ensemble size = 51, climate size = 600

System
SON 202



Monitoramento Serra da Mesa



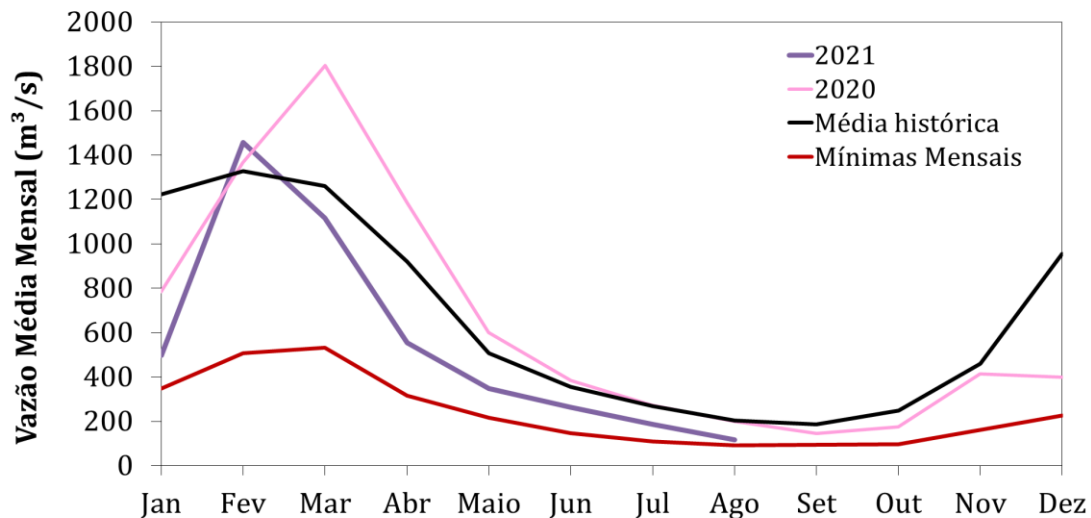
Precipitação

Estação Chuvosa - Out a Abr – 1395 mm
 2019/2020: 1550 mm (**111% da média histórica**)
 2020/2021: 1378 mm (**99% da média histórica**)

Estação Seca - Maio a Set – 109 mm
 2020: 34 mm (**31% da média histórica**)
 2021*: 17 mm (**16% da média histórica**)

Agosto/2021*: 0 mm (MLT: 16 mm)

*Até 29/08/2021



Vazão

Estação Chuvosa - Out a Abr – 914 m³/s
 2019/2020: 818 m³/s (**90% da MLT**)
 2020/2021: 659 m³/s (**72% da MLT**)

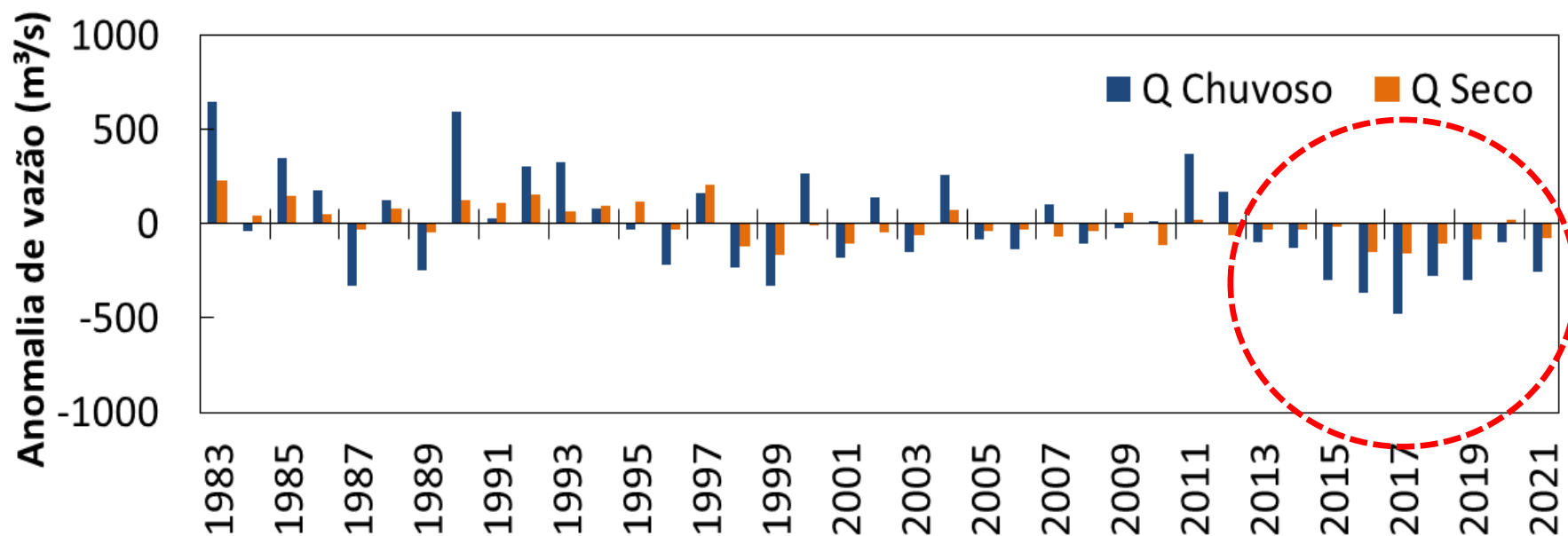
Estação Seca - Maio a Set – 304 m³/s
 2020: 320 m³/s (**105% da MLT**)
 2021**: 228 m³/s (**75% da MLT**)

Agosto/2021: 116 m³/s (57% da MLT)**

**Até 29/08/2021

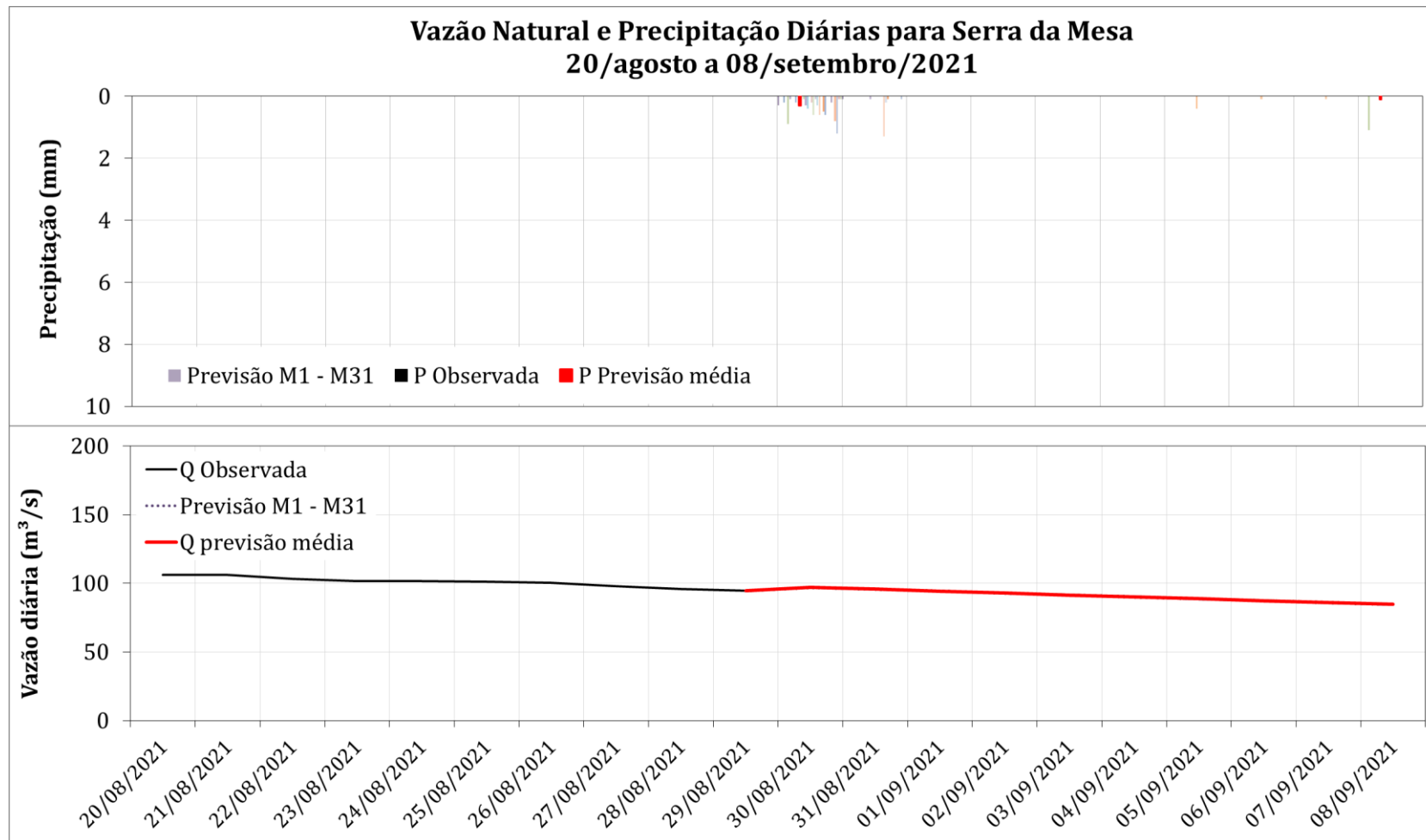
Mín mensal/Ago => 2017

Anomalia de Vazão – UHE Serra da Mesa



Estação seca/2021 = déficit de 25%

Serra da Mesa: Previsão de Vazão (modelo PDM)



Dados observados de precipitação (barras pretas) para o período de 20 a 29/08 e previsão para o período de 30/08 a 08/09/21.

Dados observados de vazão (linha preta) para o período de 20 a 29/08 e previsão para o período de 30/08 a 08/09/21.

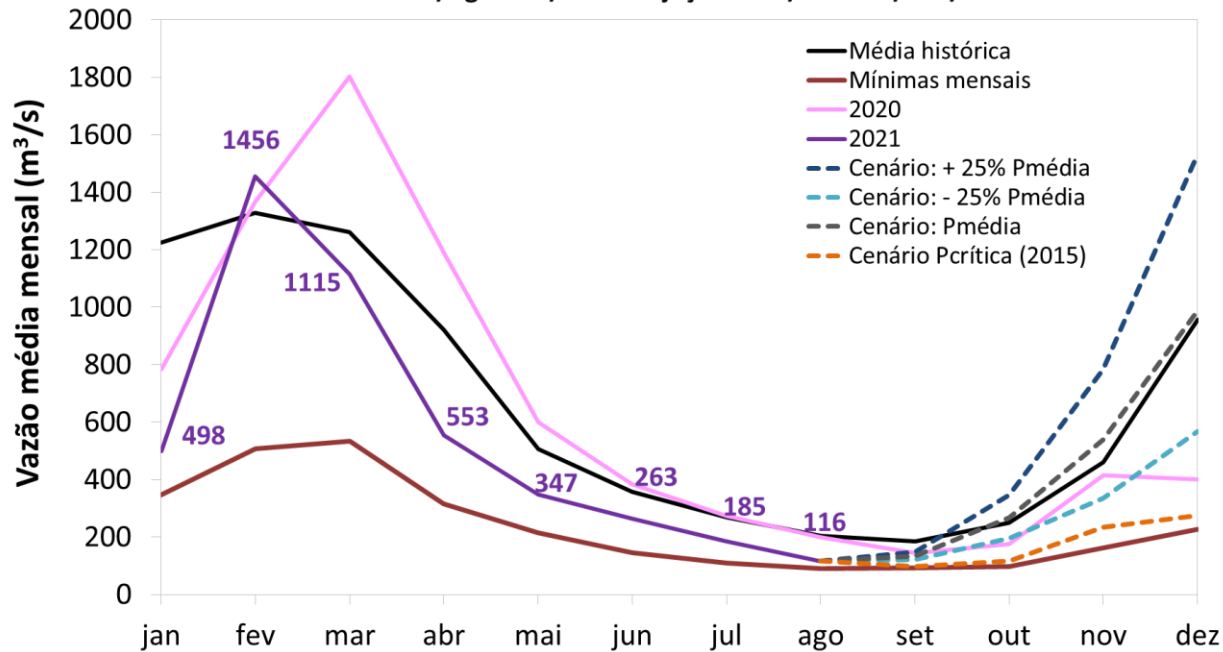
As barras coloridas correspondem às previsões da chuva para os 31 membros GEFS/NOAA e à média destes membros.

As linhas coloridas representam os membros de previsão de vazão do modelo PDM-CEMADEN

A média de vazão diária prevista para os próximos 10 dias: 90 m³/s

Serra da Mesa: Projeção de Vazão (modelo hidrológico PDM-CEMADEN)

UHE Serra da Mesa - Rio Tocantins
Histórico e simulação de vazão natural média mensal
Previsão: 30/Ago a 08/Set - Projeções: 09/Set a 31/Dez/2021



MLT Set a Dez = 463 m³/s

702 m³/s:	152% da MLT*
481 m³/s:	104%
305 m³/s:	66%
180 m³/s:	39%

MLT*: 1983-2020