

Monitoramento e Previsões para a Bacia do rio Tocantins

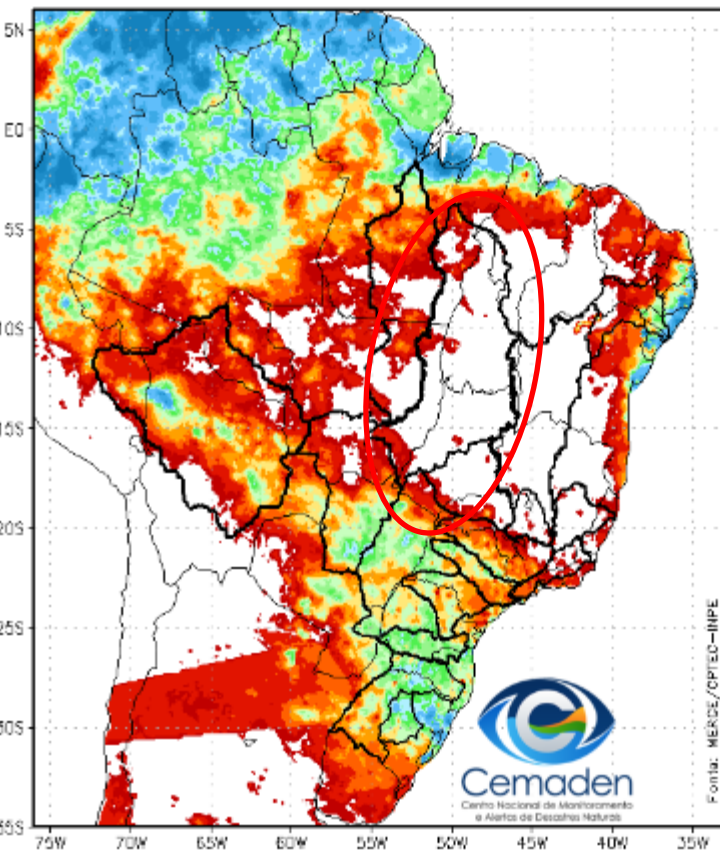


Cemaden
Centro Nacional de Monitoramento
e Alertas de Desastres Naturais

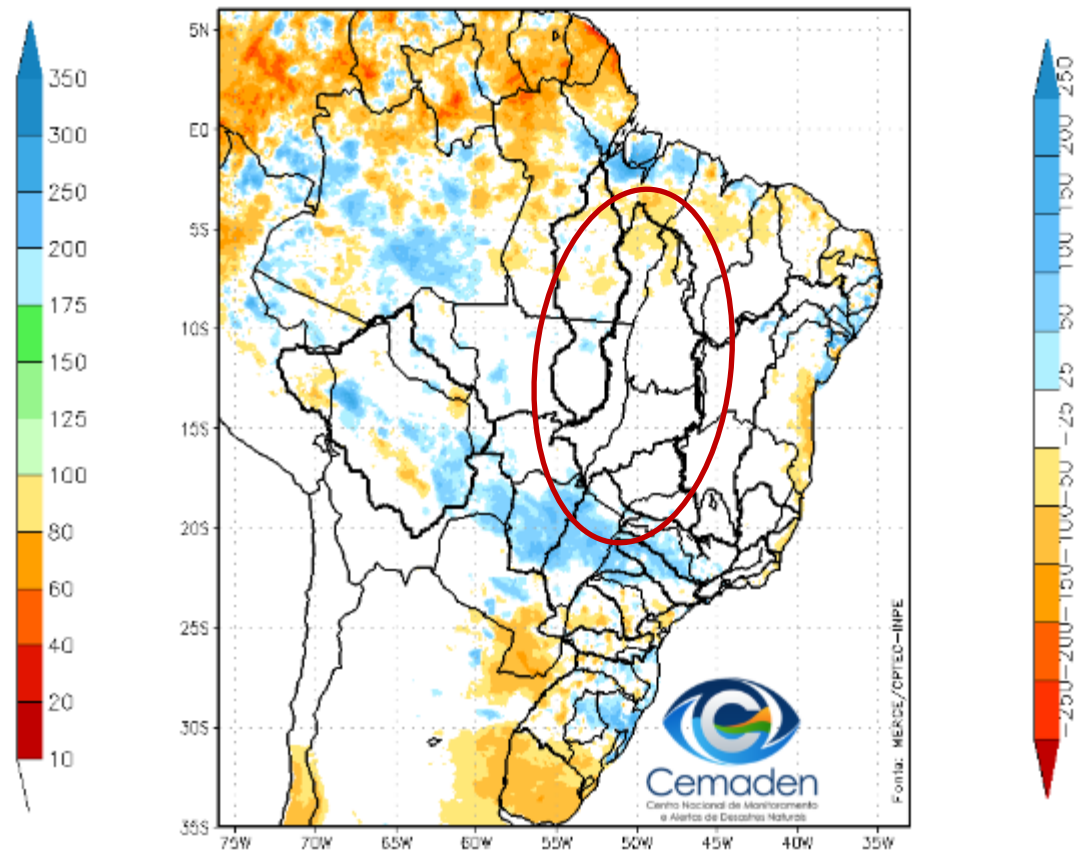
27 de Junho de 2023

Precipitação acumulada nos últimos 30 dias

Precipitação Acumulada (mm) A.S.
Período: 27/05/2023 a 26/06/2023 (30 dias)

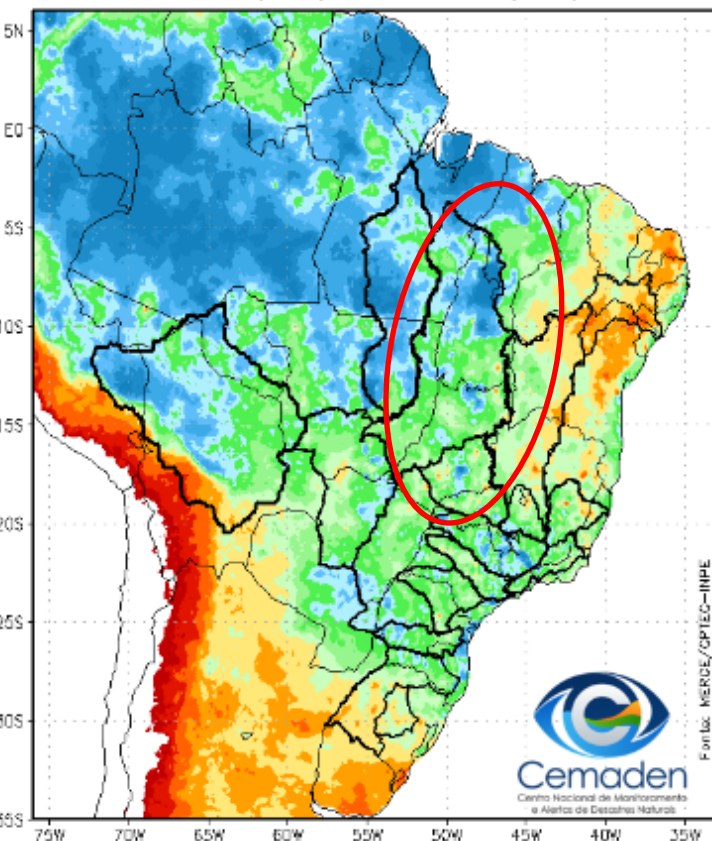


Anomalia de Precipitação (mm) A.S.
Período: 27/05/2023 a 26/06/2023 (30 dias)

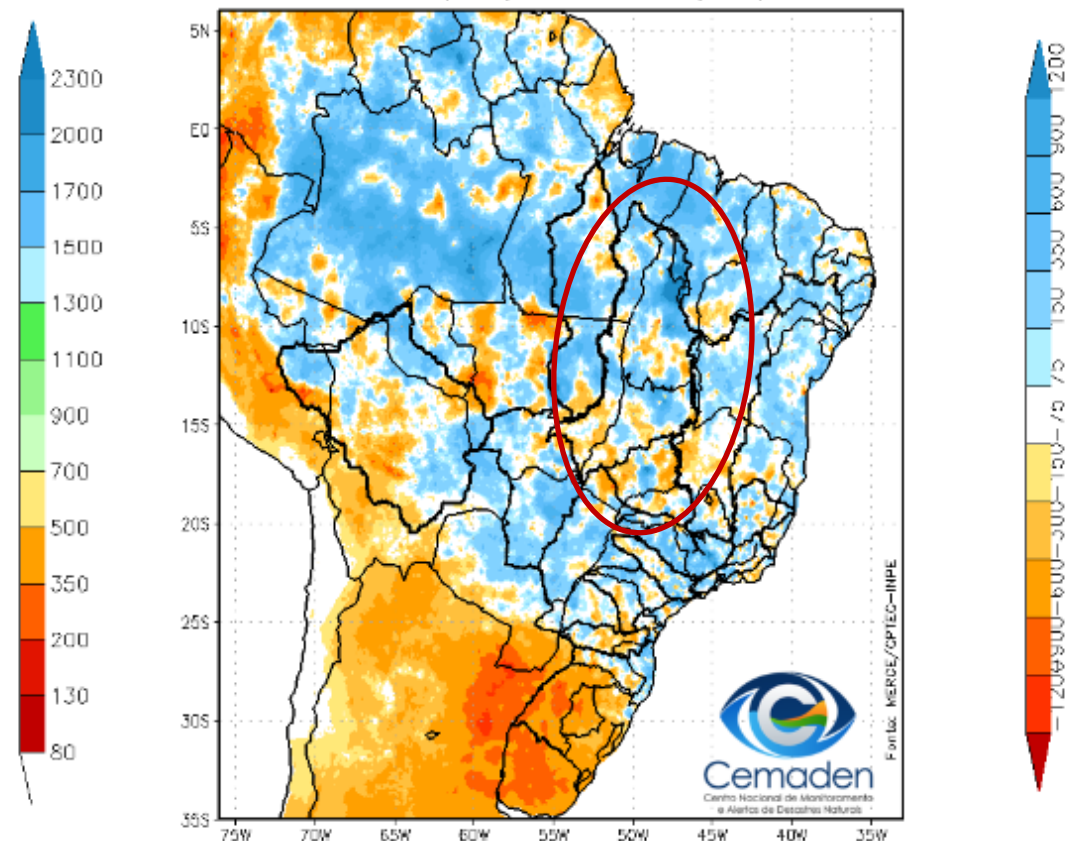


Precipitação acumulada no Ano Hidrológico

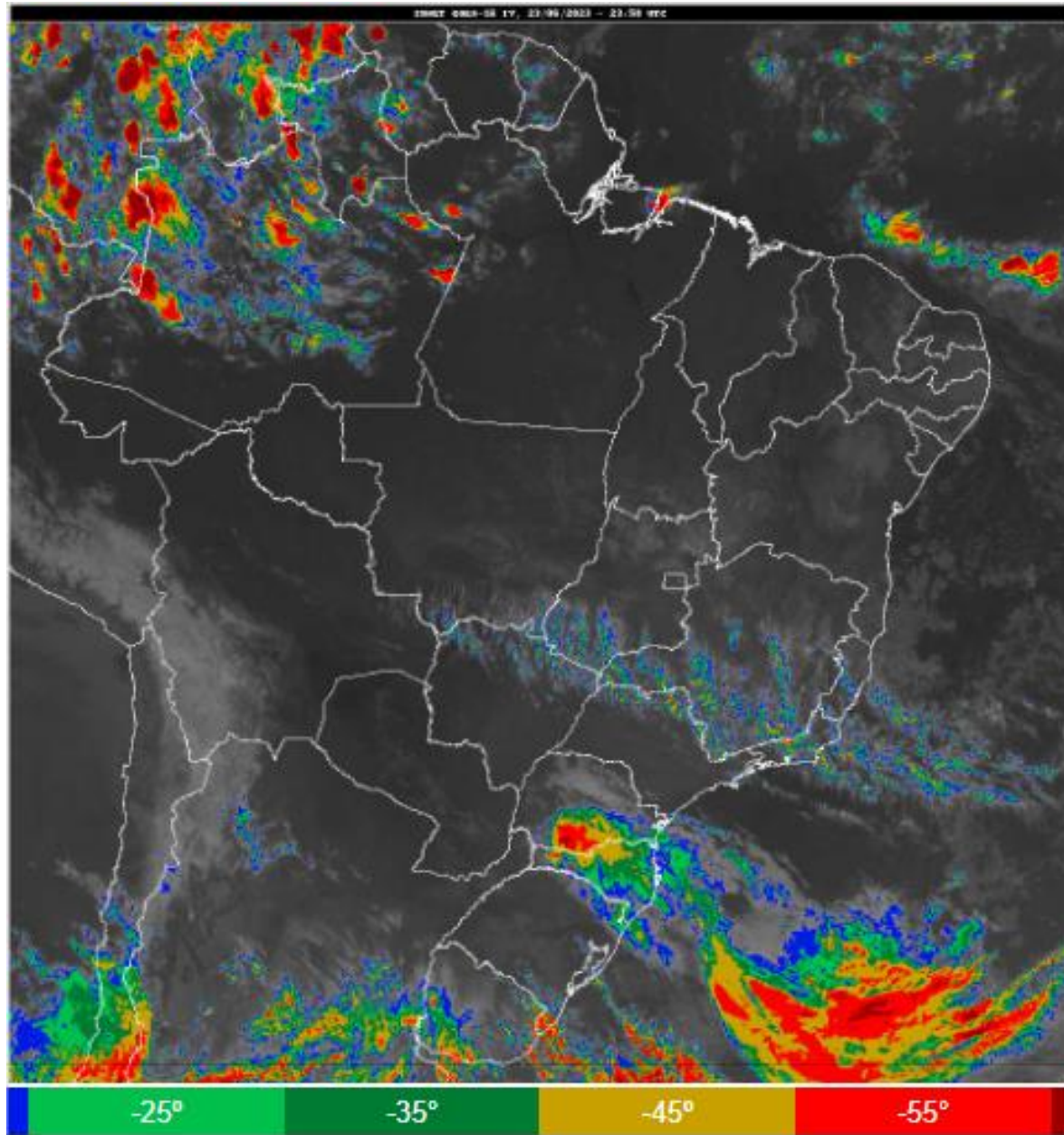
Precipitação Acumulada (mm) Ano Hidrológico
Período: 01/10/2022 a 26/06/2023



Anomalia de Precipitação (mm) Ano Hidrológico
Período: 01/10/2022 a 26/06/2023



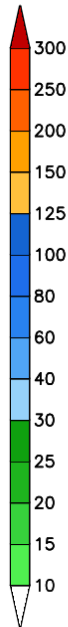
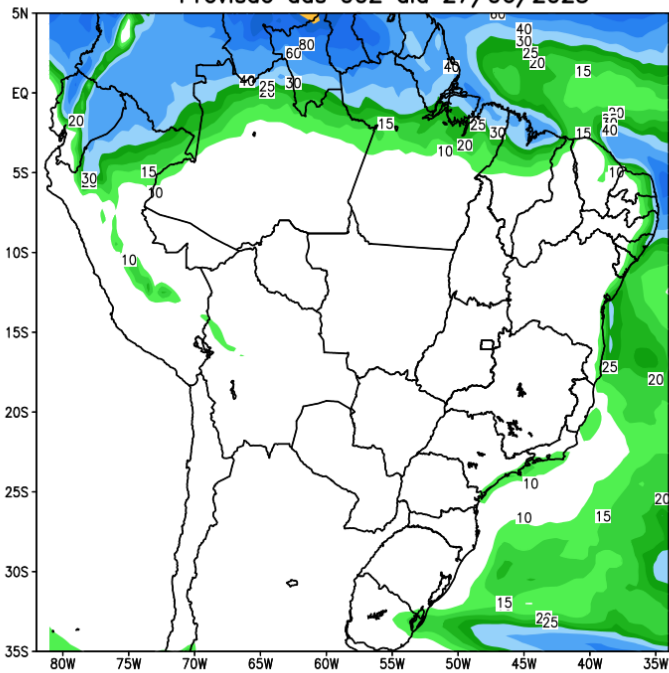
Situação meteorológica atual



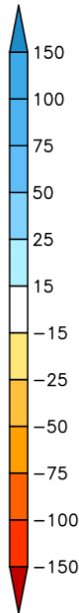
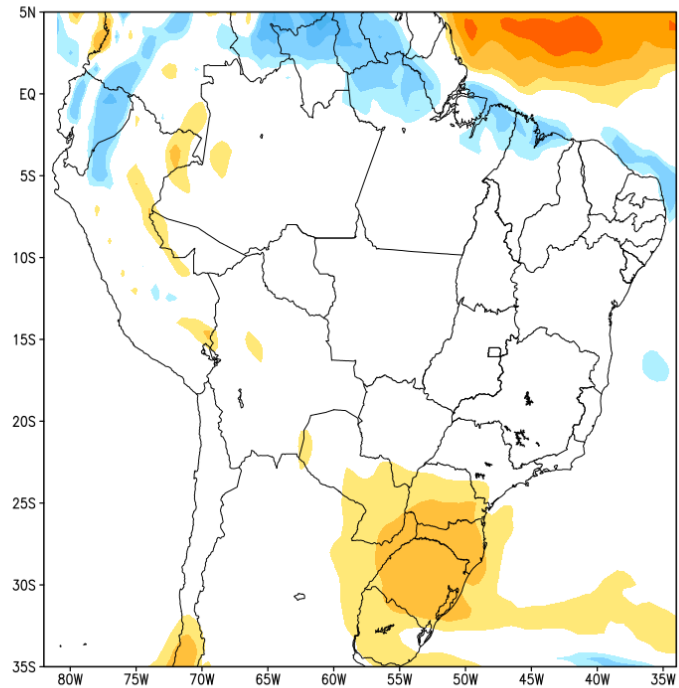
Fonte: INMET

Previsão de chuva próximos 7 dias

GEFS / BRASIL
Precipitacao acumulada 1aSem (mm)
Previsao das 00Z dia 27/06/2023



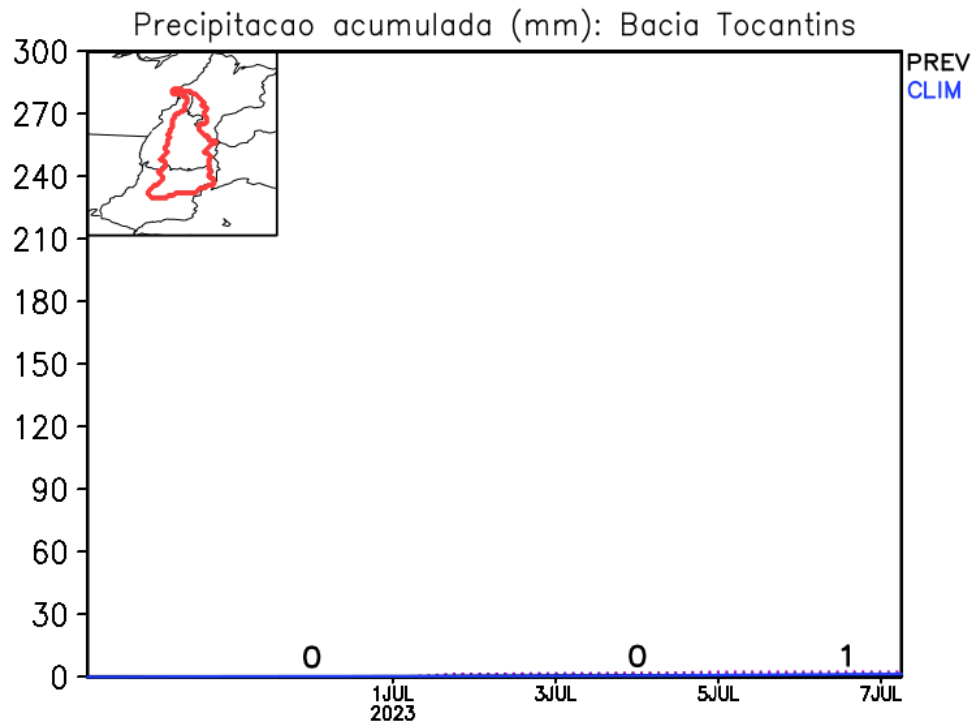
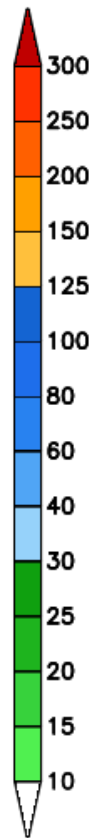
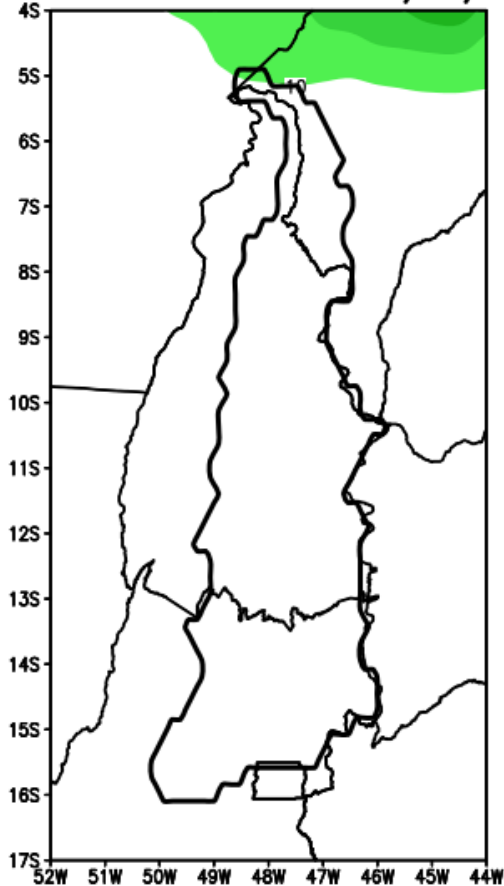
Anomalia de Precipitacao BR (mm)
Periodo: 2023062700 a 2023070400



Fonte: GFS/NOAA

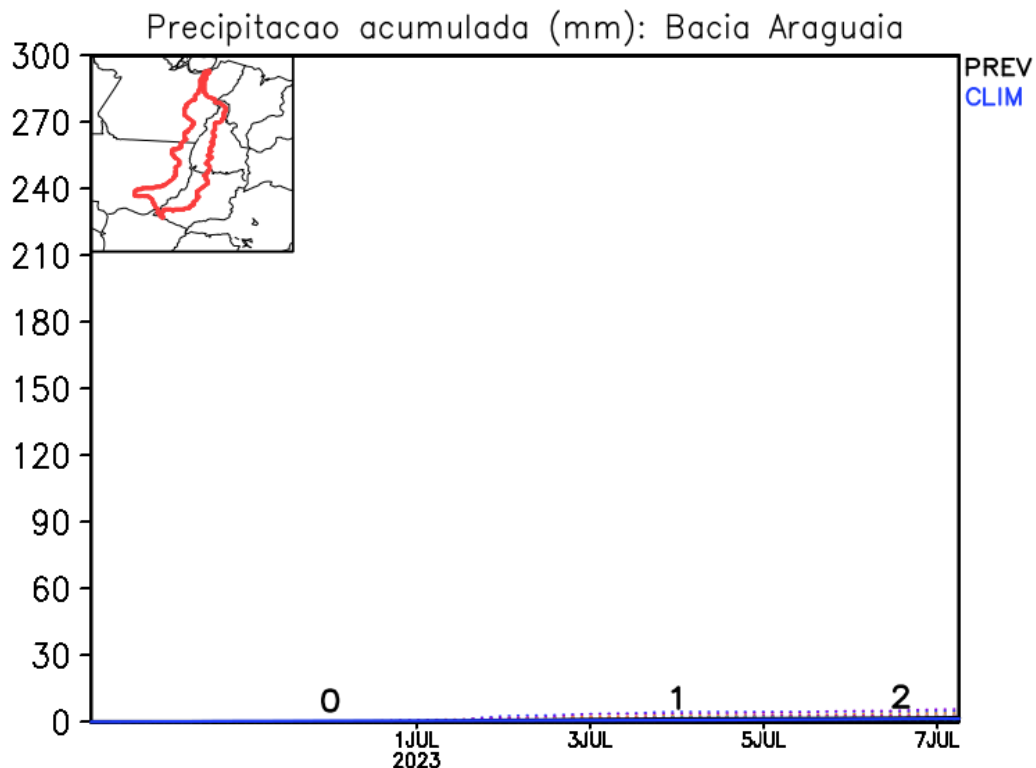
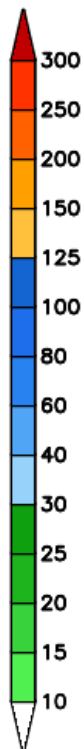
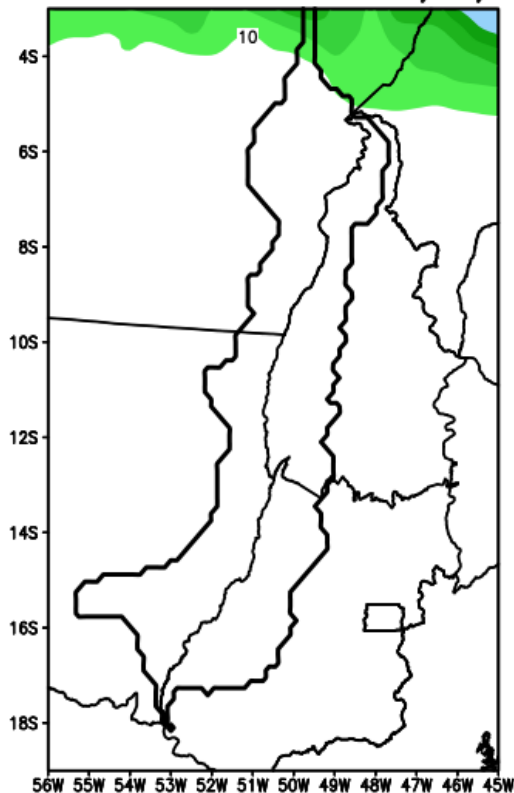
Previsão Bacia Rio Tocantins

GEFS / Bacia Tocantins
Precipitacao acumulada em 7 dias (mm)
Previsao das 00Z dia 27/06/2023



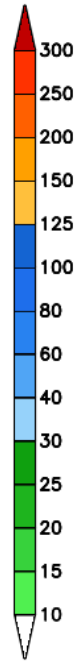
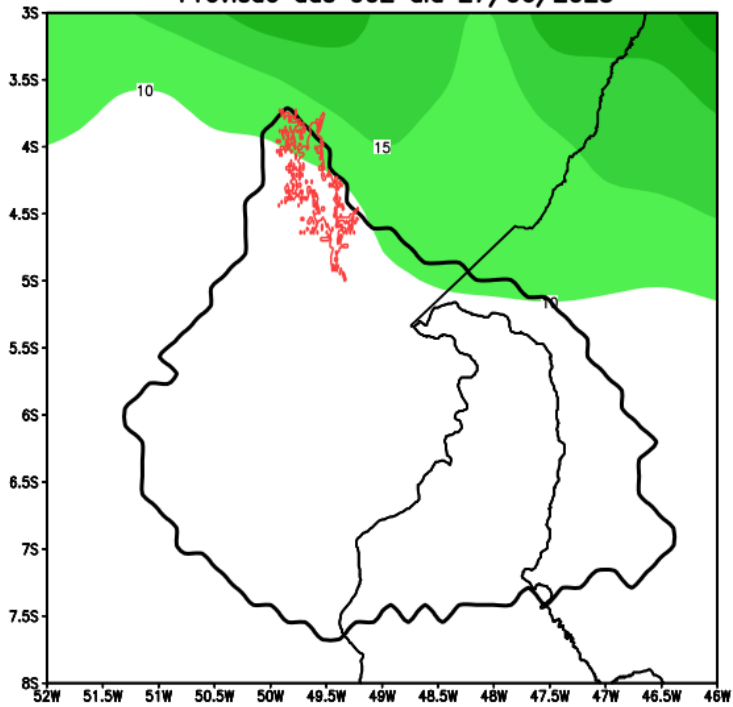
Previsão Bacia Rio Araguaia

GEFS / Bacia do Rio Araguaia
Precipitação acumulada em 7 dias (mm)
Previsão das 00Z dia 27/06/2023

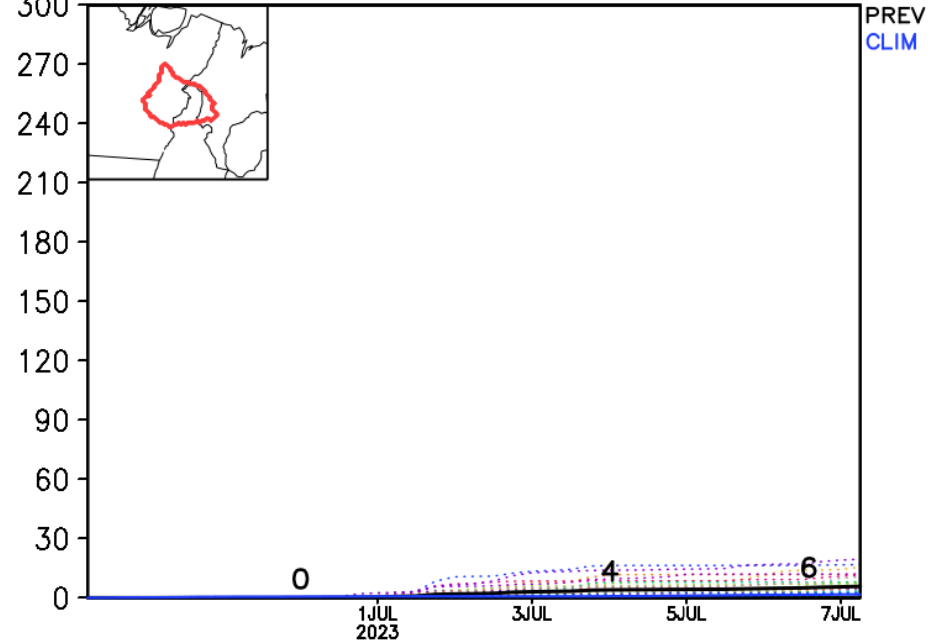


Previsão Bacia Tocantins (Baixo)

GEFS / Bacia Baixo Tocantins
Precipitacao acumulada em 7 dias (mm)
Previsao das 00Z dia 27/06/2023

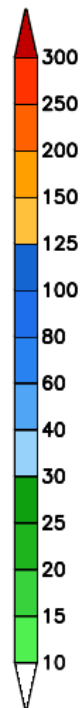
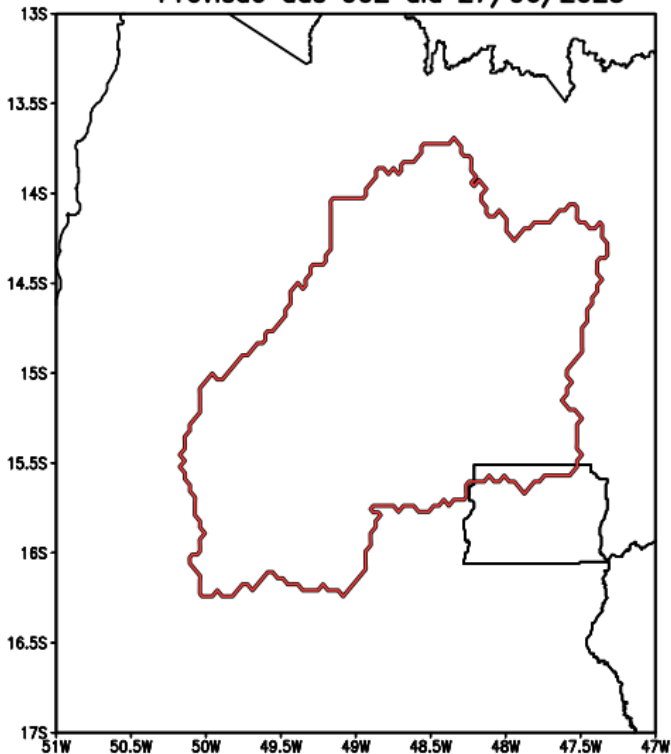


Precipitacao acumulada (mm): Bacia Tocantins-Baixo

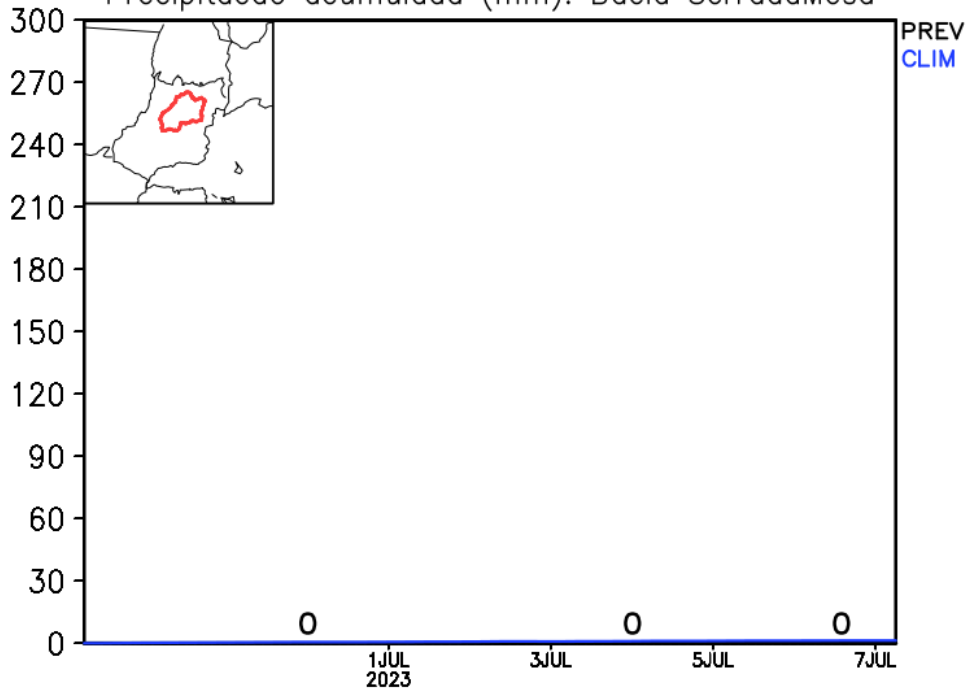


Previsão Bacia Serra da Mesa

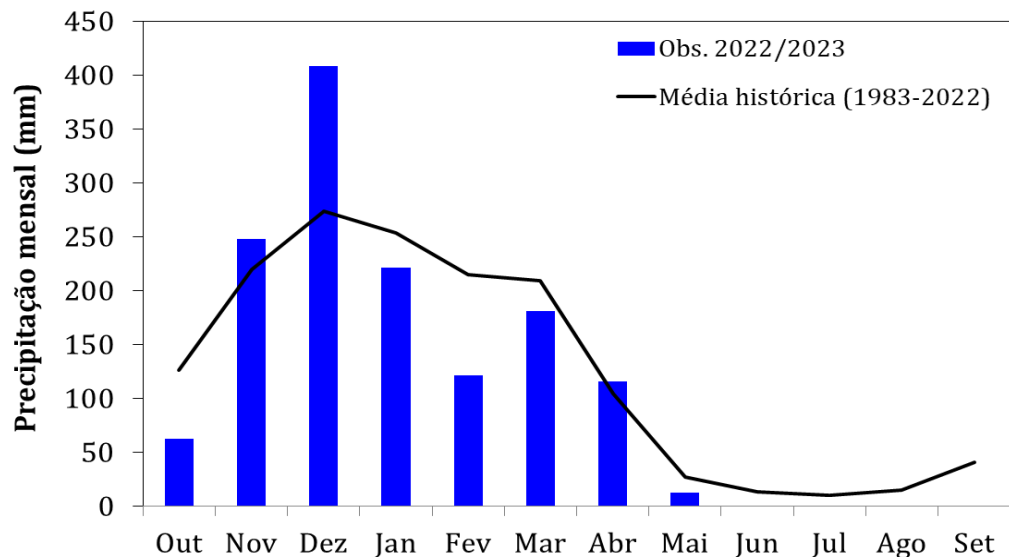
GEFS / Bacia Serra da Mesa
Precipitacao acumulada em 7 dias (mm)
Previsao das 00Z dia 27/06/2023



Precipitacao acumulada (mm): Bacia SerradaMesa



Monitoramento UHE Serra da Mesa



Precipitação

Estação Chuvosa - Out a Abr – 1402 mm

2021/2022: 1473 mm (105% da média histórica)

2022/2023: 1358 mm (97% da média histórica)

Estação Seca - Maio a Set – 106 mm

2022: 54 mm (51% da média histórica)

2023*: 13 mm (12% da média histórica)

Jun/2023*: 1 mm (4% da média histórica)

*Até 25/06/2023

Vazão

Estação Chuvosa - Out a Abr – 918 m³/s

2021/2022: 1184 m³/s (129% da MLT)

2022/2023: 909 m³/s (99% da MLT)

Estação Seca - Maio a Set – 300 m³/s

2022: 231 m³/s (77% da MLT)

2023*: 330 m³/s (110% da MLT)

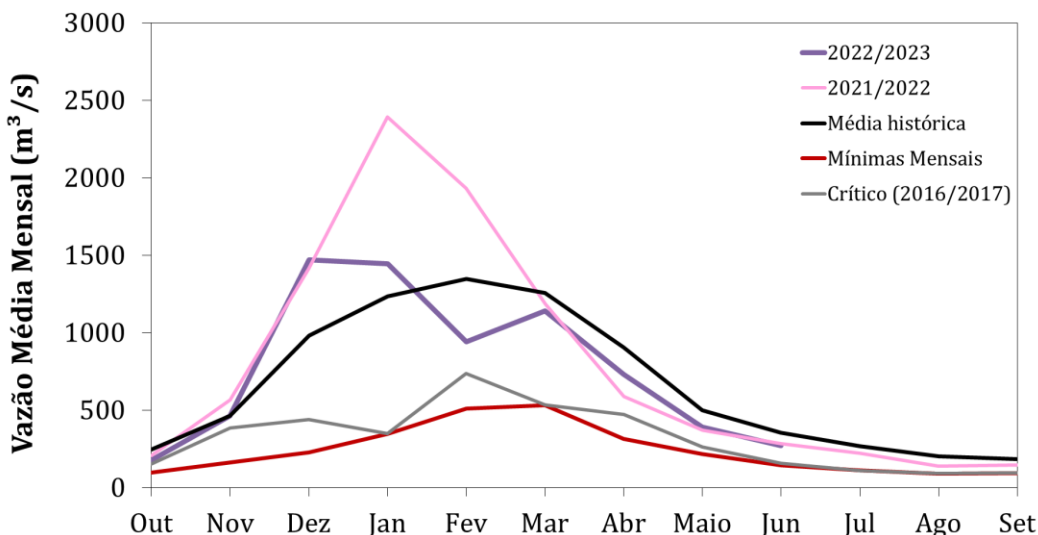
Junho/2023*: 269 m³/s (77% da MLT)

25/Jun/2023: 236 m³/s (67% da MLT)

*Até 25/06/2023

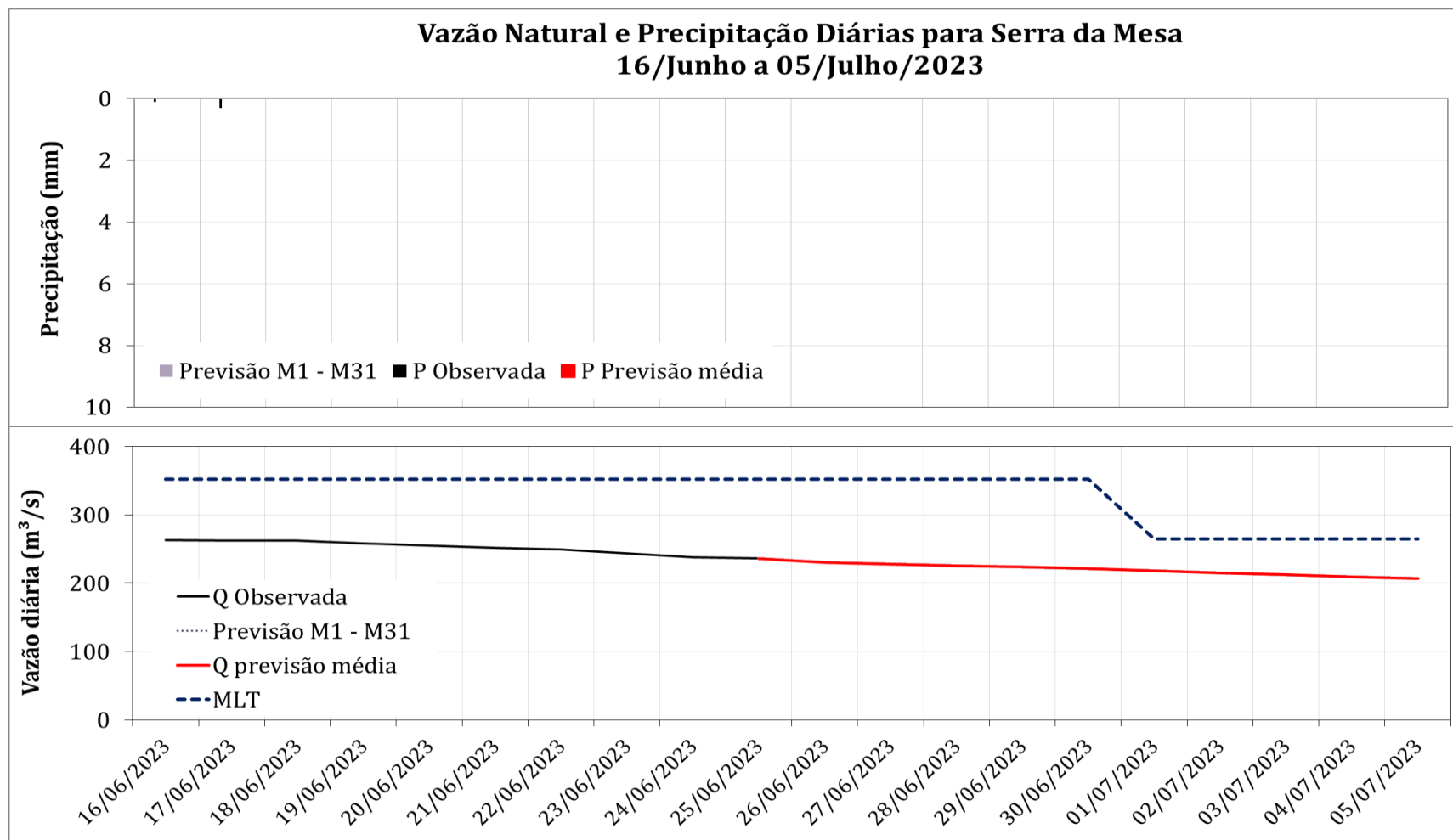
Dados de precipitação: INMET, ANA, CEMADEN

Dados de vazão: ONS e ANA



Média de Longo Termo – MLT = 1983-2022

Serra da Mesa: Previsão de Vazão (modelo hidrológico PDM-CEMADEN)



Dados **observados de precipitação** (barras pretas) para o período 16 a 25/06/23 e **previsão** para o período de 26/06 a 05/07/23.
Dados **observados de vazão** (linha preta) para o período 16 a 25/06/23 e **previsão** para o período de 26/06 a 05/07/23.

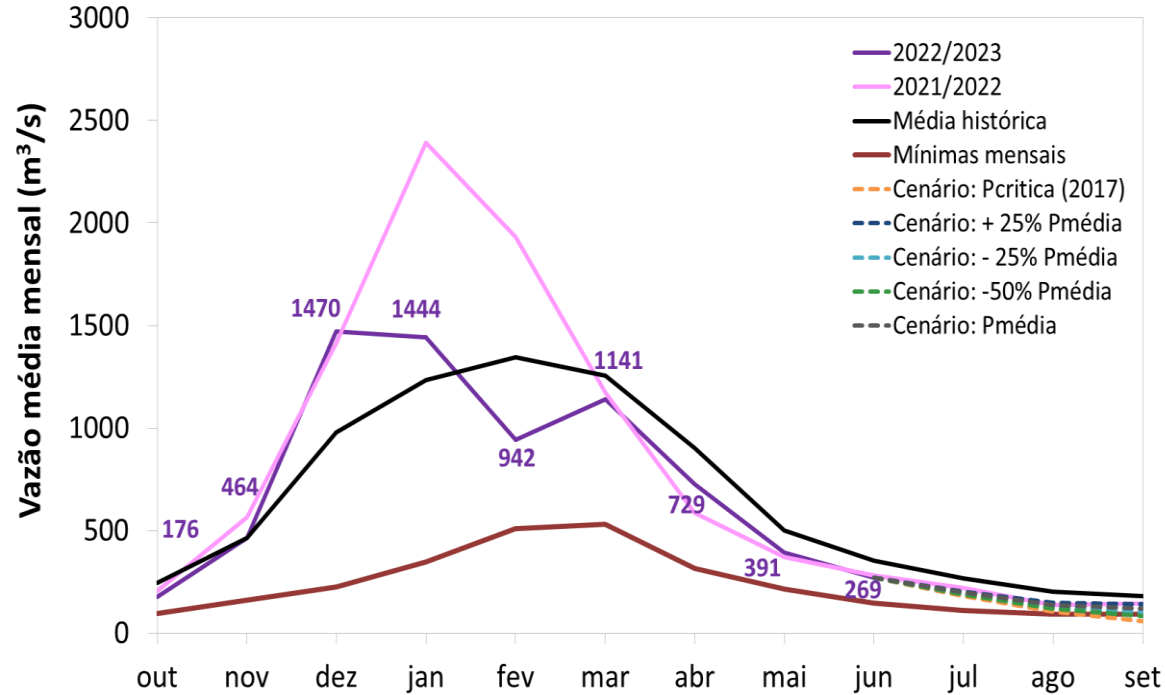
As barras coloridas correspondem às previsões da chuva para os 31 membros GEFS/NOAA e à média destes membros.

As linhas coloridas representam os membros de previsão de vazão.

Previsão média para os próximos 10 dias: 219 m³/s

Serra da Mesa: Projeção de Vazão (modelo hidrológico PDM-CEMADEN)

Previsão: 26/ Jun a 05/Jul - Projeções: 06/Jul a 30/Set/23

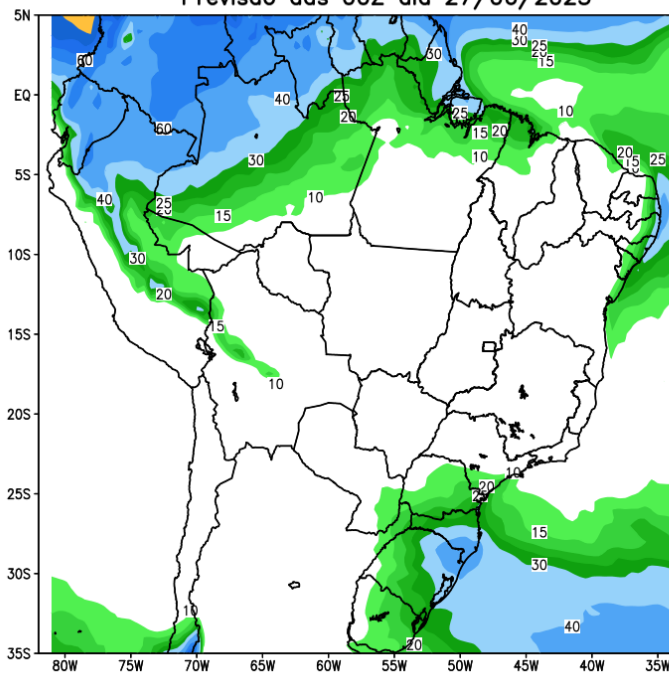


Julho a Setembro
MLT: 216 m³/s

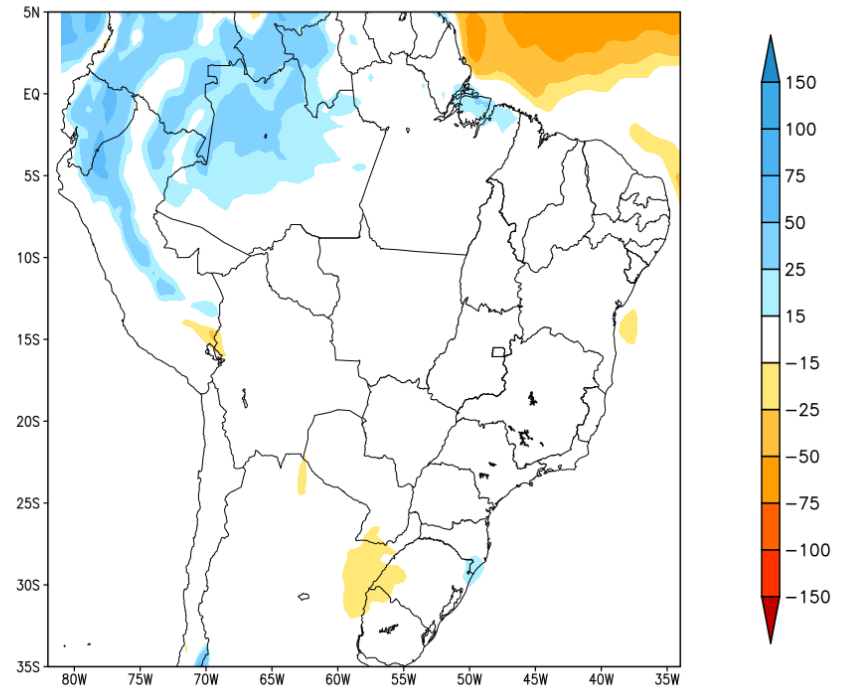
Vazão	% MLT
163 m³/s	75%
152 m³/s	70%
140 m³/s	65%
115 m³/s	53%

Tendência para a 2a Semana

GEFS / BRASIL
Precipitacao acumulada 2aSem (mm)
Previsao das 00Z dia 27/06/2023

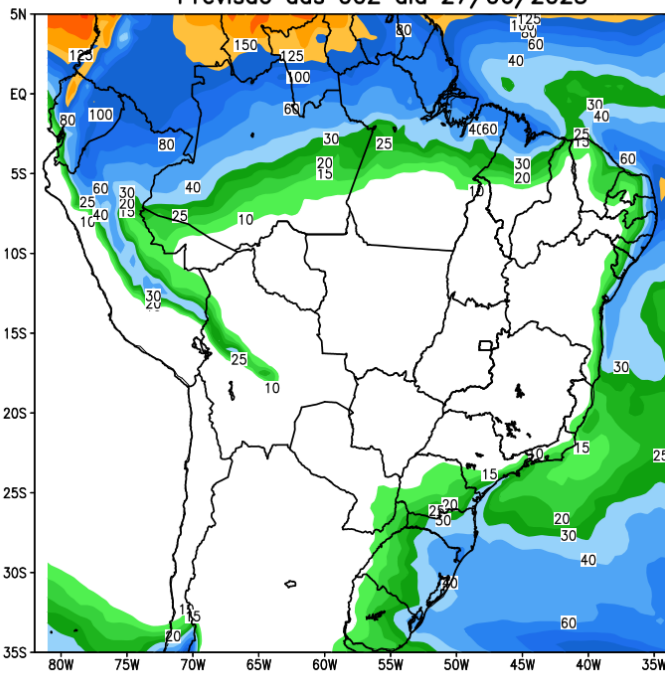


Anomalia de Precipitacao BR (mm)
Periodo: 2023070500 a 2023071100

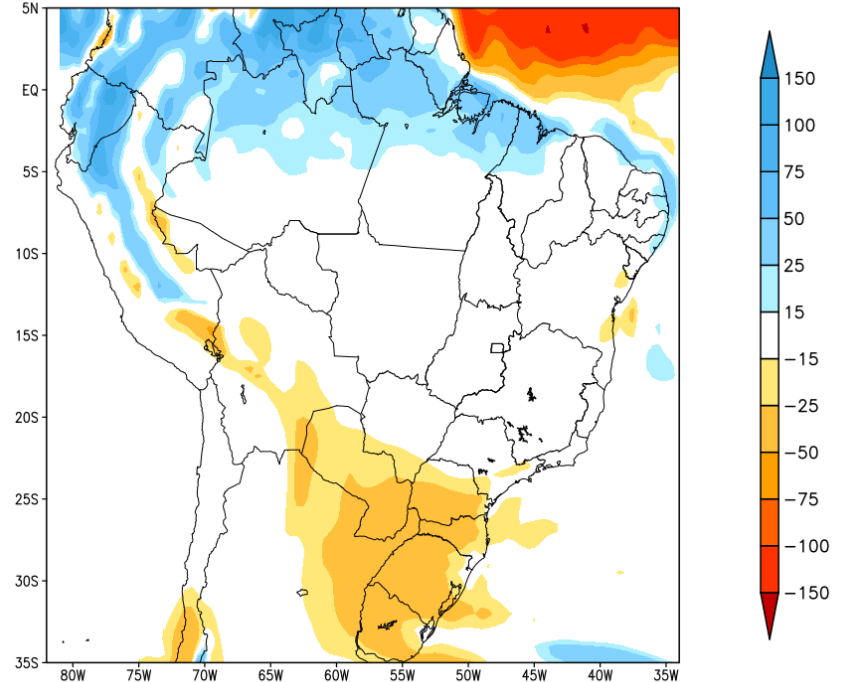


Tendência para as próximas duas semanas

GEFS / BRASIL
Precipitacao acumulada 14dias (mm)
Previsao das 00Z dia 27/06/2023



Anomalia de Precipitacao BR (mm)
Periodo: 2023062700 a 2023071100

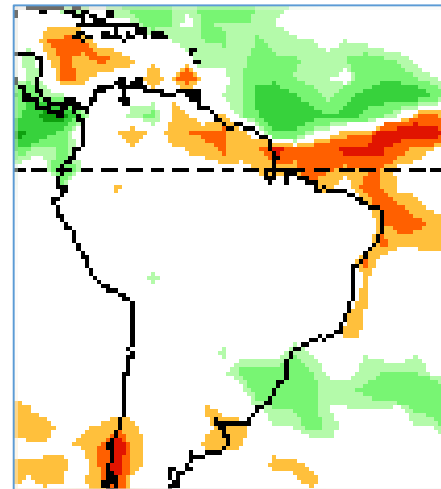
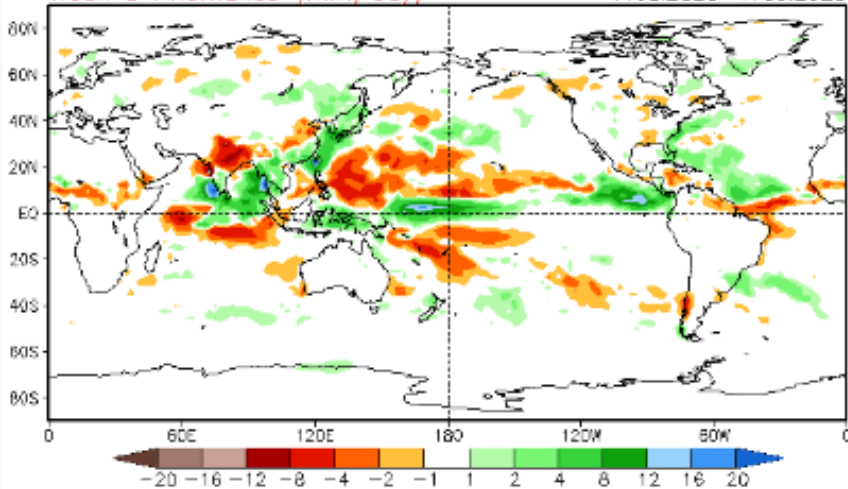


Tendência 3a e 4a semanas

16 Member Ensemble Mean Forecast from 26Jun2023

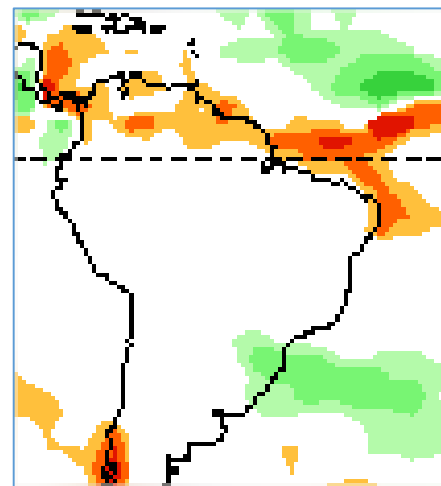
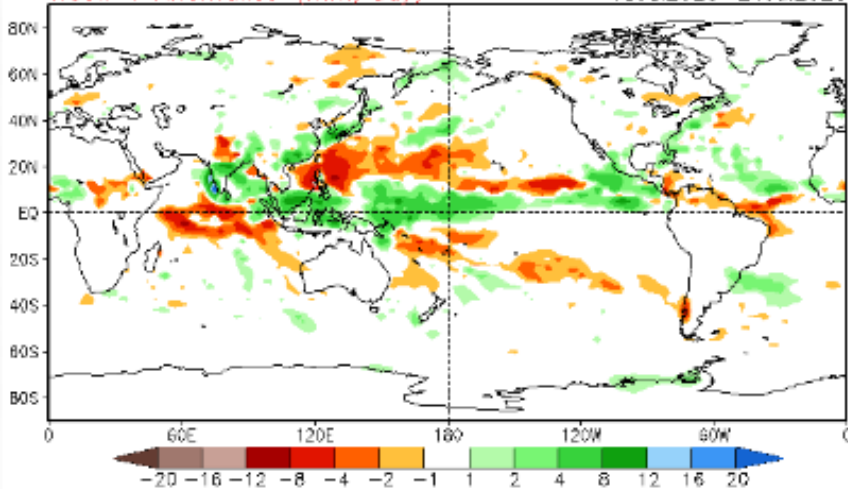
Week 3 Anomalies (mm/day)

11Jul2023–17Jul2023



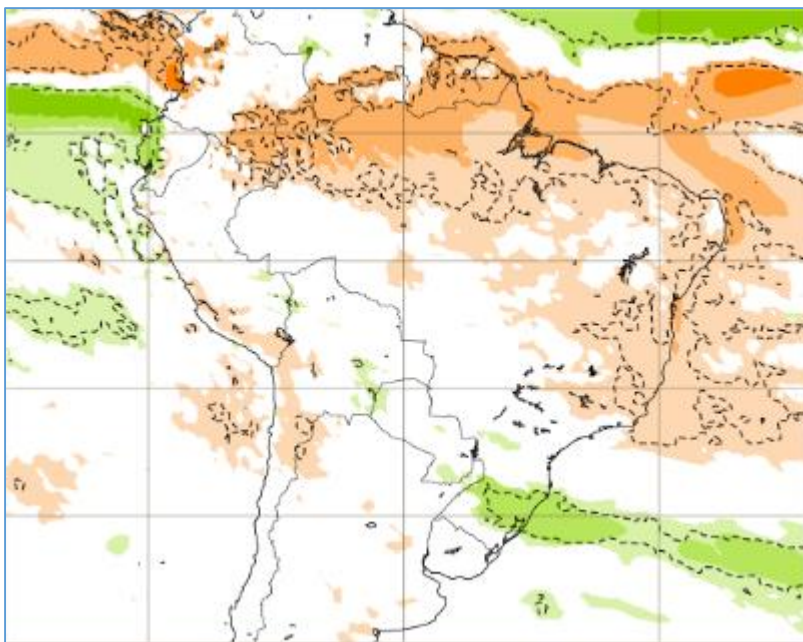
Week 4 Anomalies (mm/day)

18Jul2023–24Jul2023

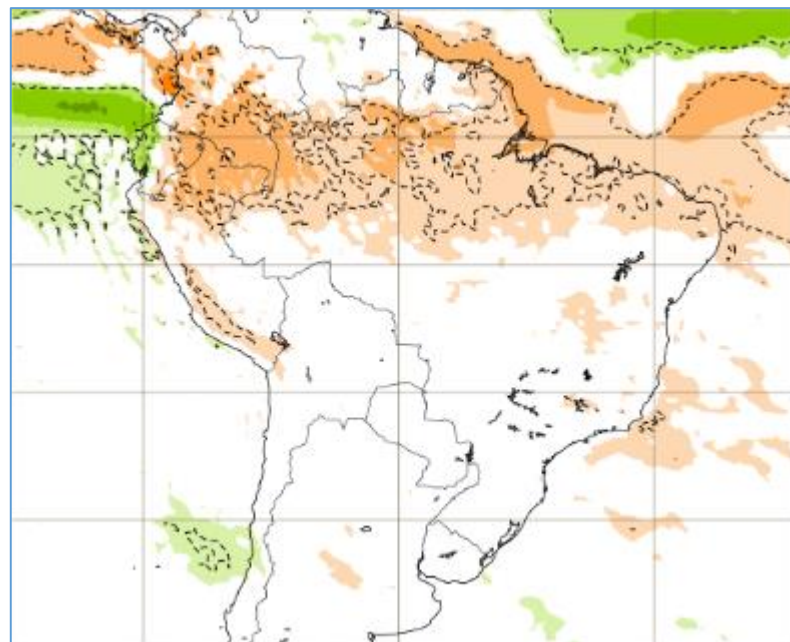


Tendência para 3ª e 4ª semanas

10-17/07



17-24/07





Update prepared by:
Climate Prediction Center / NCEP
26 June 2023

ENSO Alert System Status: **El Niño Advisory**

El Niño conditions are observed.*

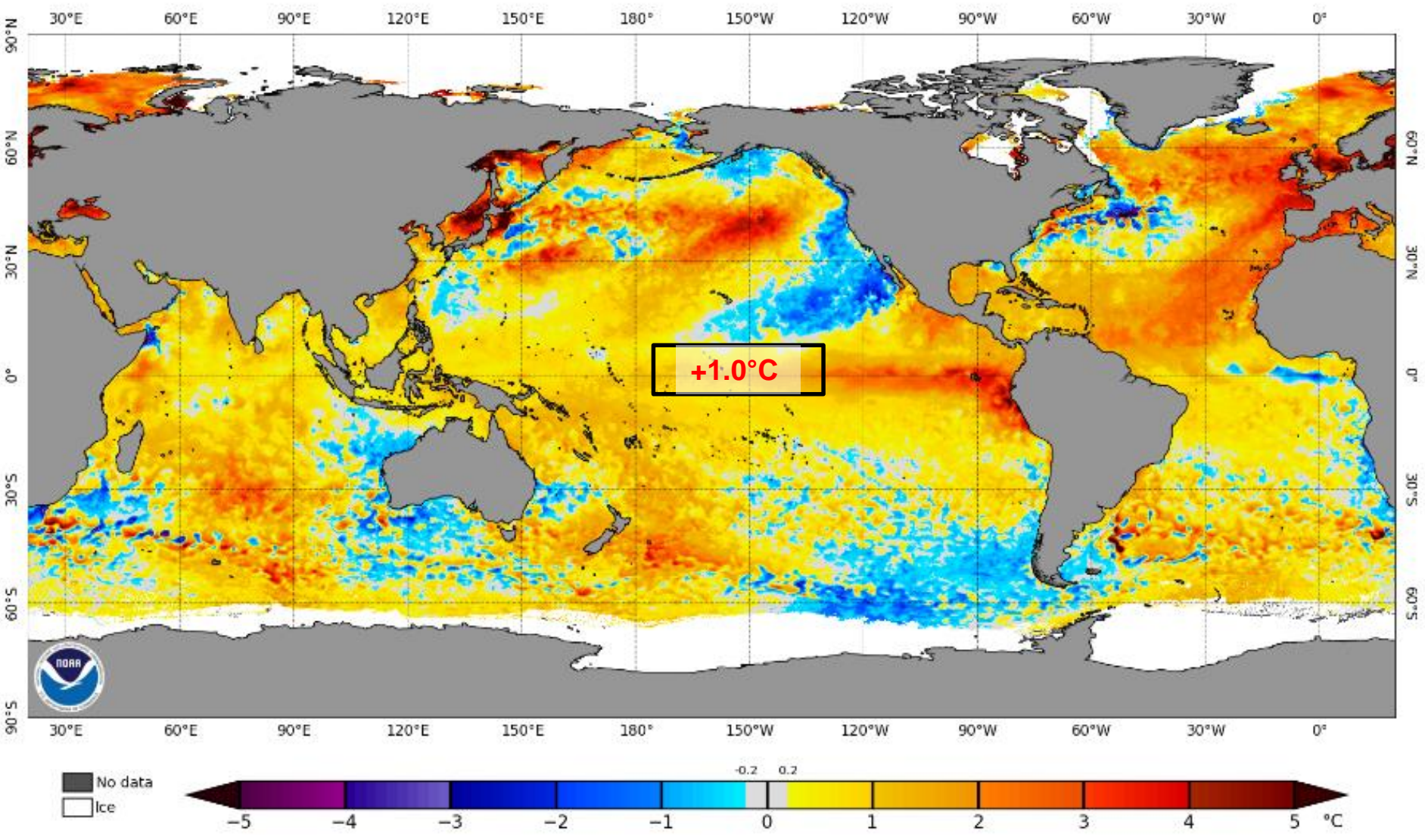
Equatorial sea surface temperatures (SSTs) are above average across the east-central and eastern Pacific Ocean.

The tropical Pacific atmospheric anomalies are consistent with weak El Niño conditions.

El Niño conditions are expected to gradually strengthen into the Northern Hemisphere winter 2023-24.*

Status Atual: El Niño

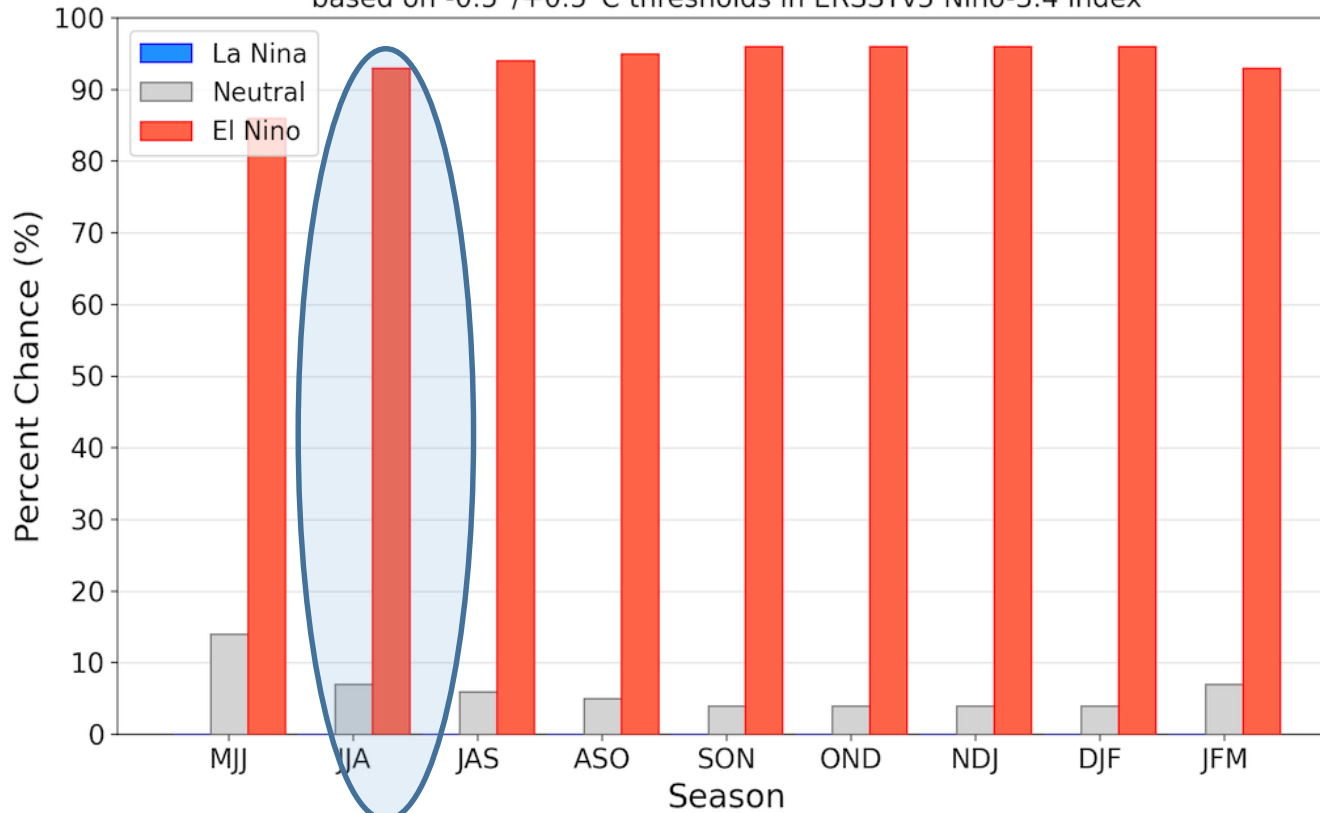
NOAA Coral Reef Watch Daily 5km SST Anomalies (v3.1) 25 Jun 2023



Previsão do “ENSO”

Official NOAA CPC ENSO Probabilities (issued June 2023)

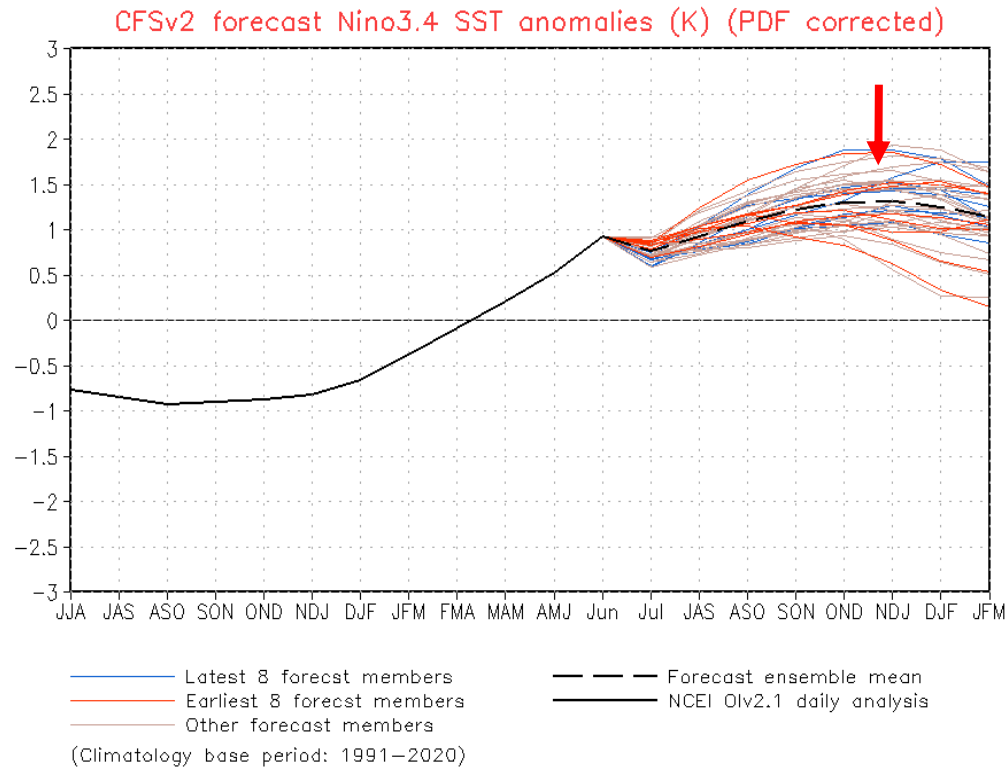
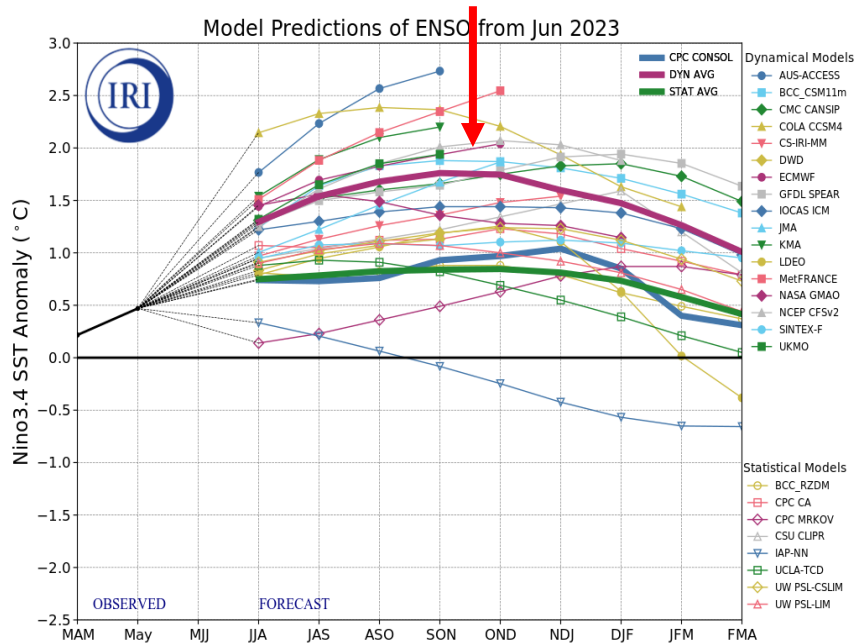
based on $-0.5^{\circ}/+0.5^{\circ}\text{C}$ thresholds in ERSSTv5 Niño-3.4 index



Status Atual: **El Niño**

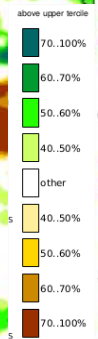
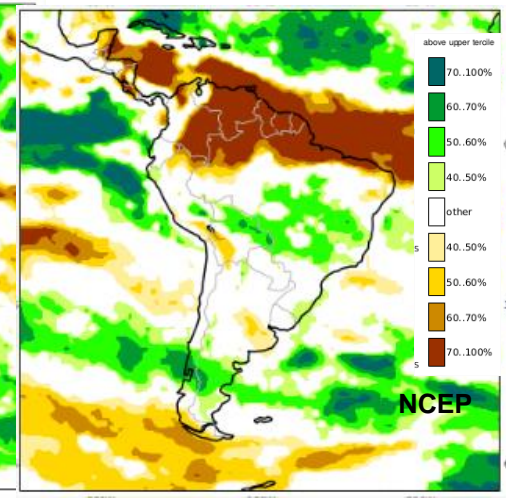
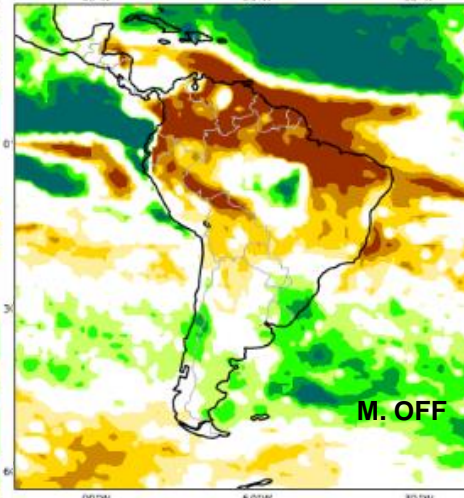
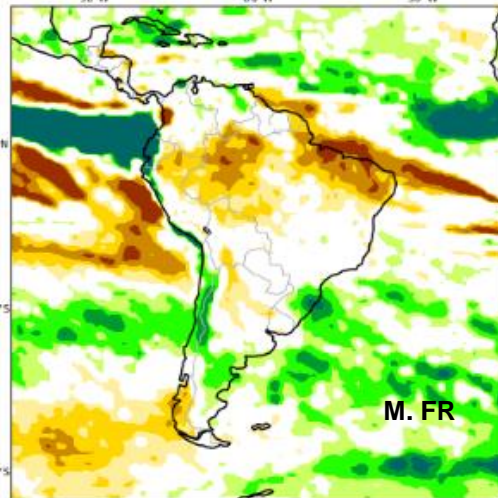
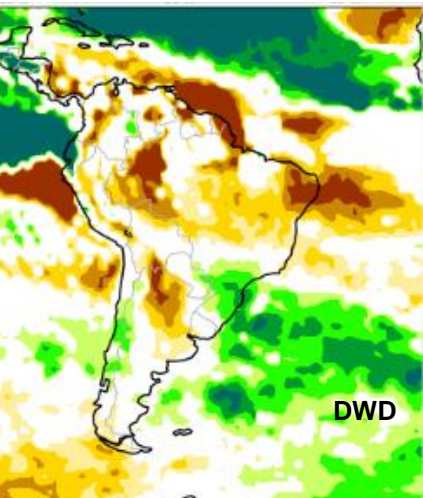
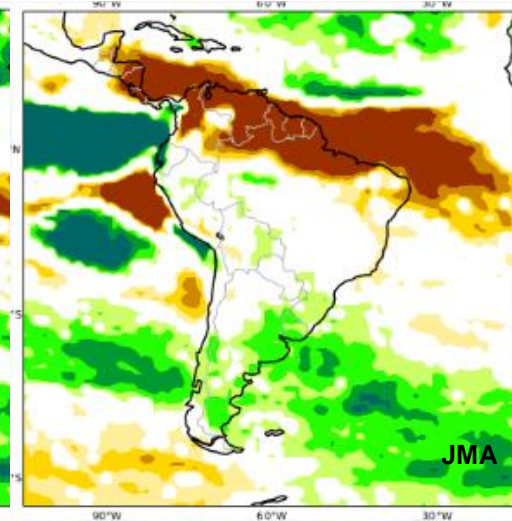
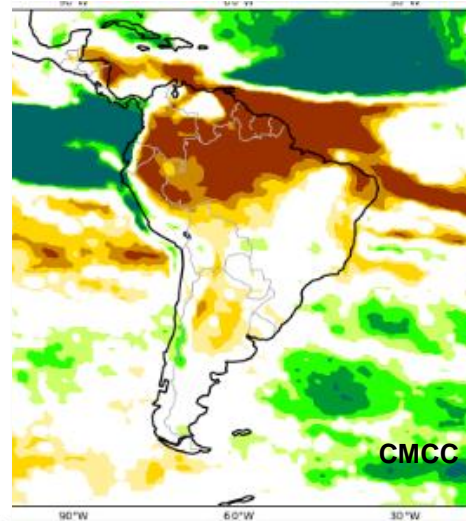
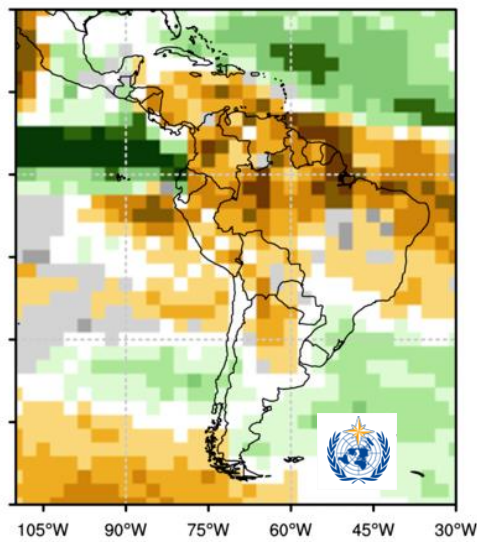
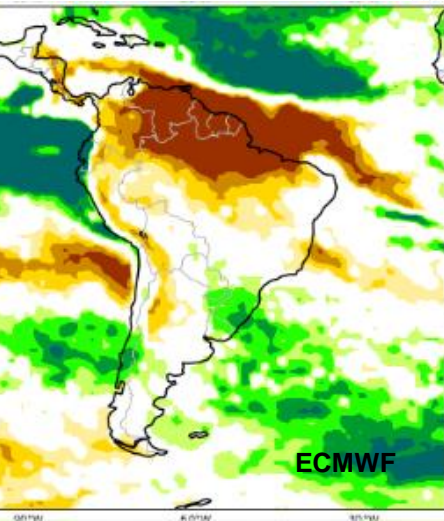
FONTE: NOAA

Previsão do “ENSO”



Atualizado: 26 de junho 2023

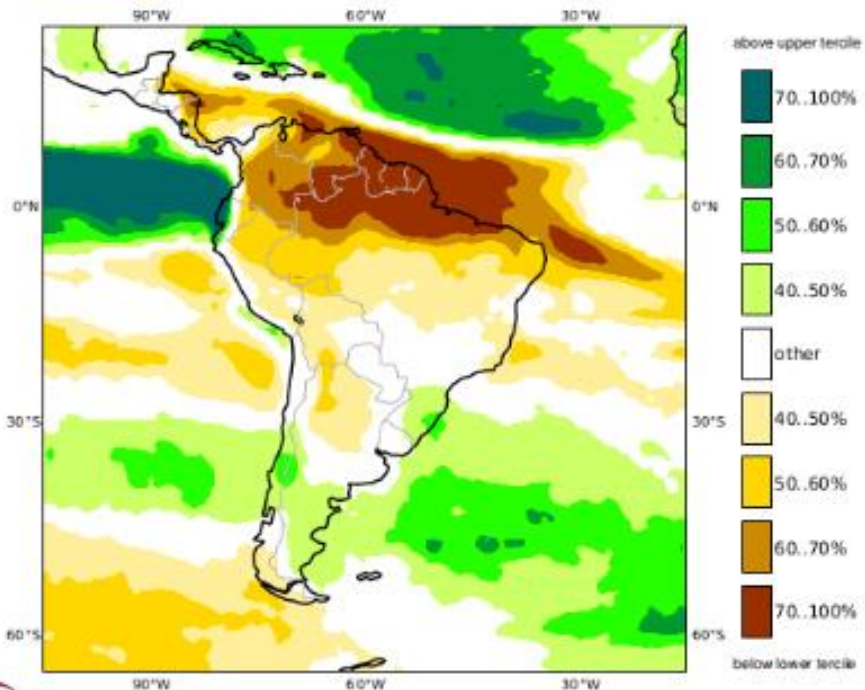
Previsão sazonal de Chuva JAS



Previsão Multi Modelo JAS

C3S multi-system seasonal forecast
Prob(most likely category of precipitation)
Nominal forecast start: 01/06/23
Unweighted mean

JAS 2023



NMME Precipitation Anomalies (mm/day)

Jul2023-Sep2023 June2023 initial conditions

