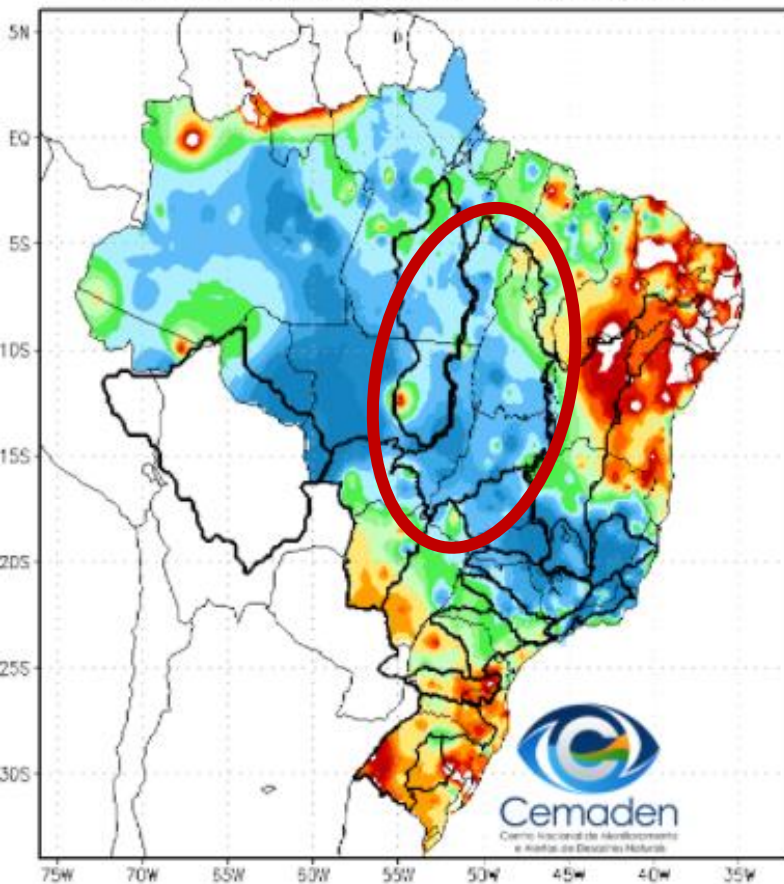


Monitoramento e Previsões para a Bacia do rio Tocantins

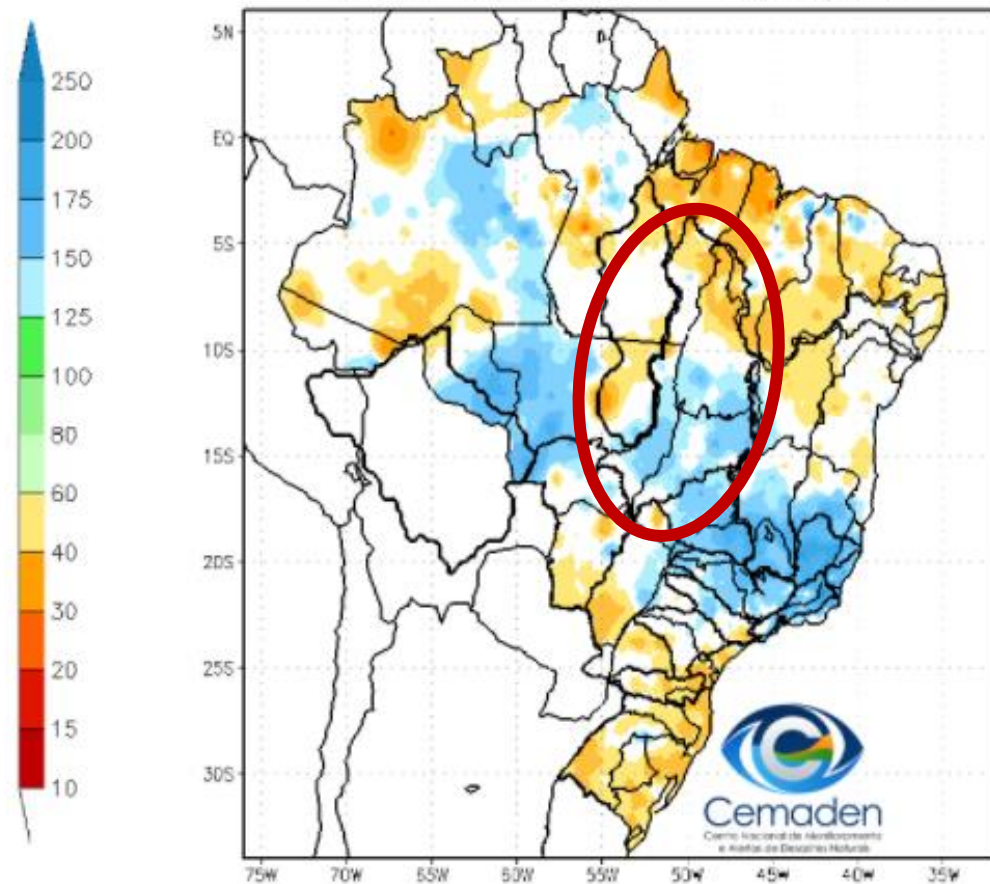


Precipitação acumulada nos últimos 15 dias

Precipitação Acumulada (mm) A.S.
Período: 31/01/2022 a 15/02/2022

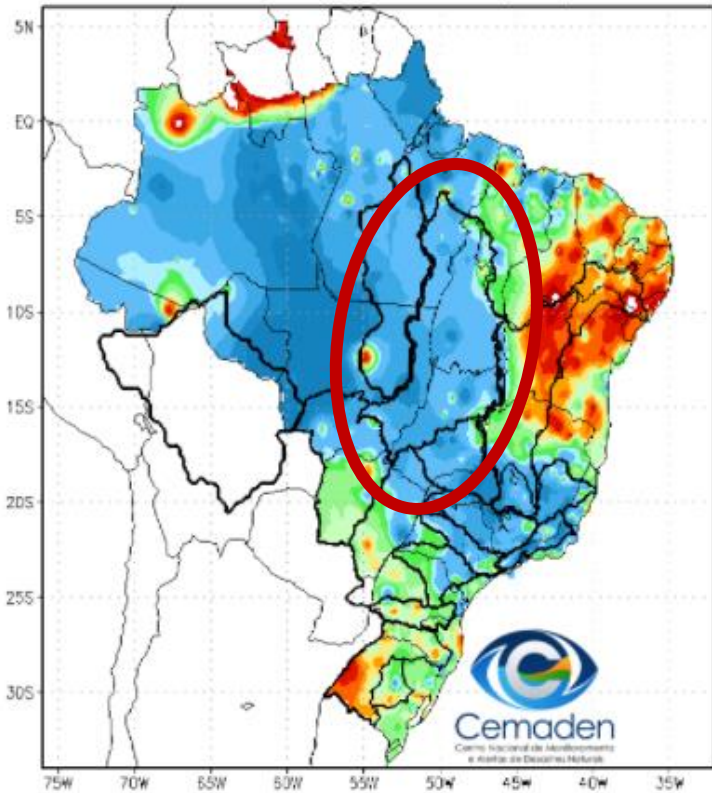


Anomalia de Precipitação (mm) A.S.
Período: 31/01/2022 a 15/02/2022

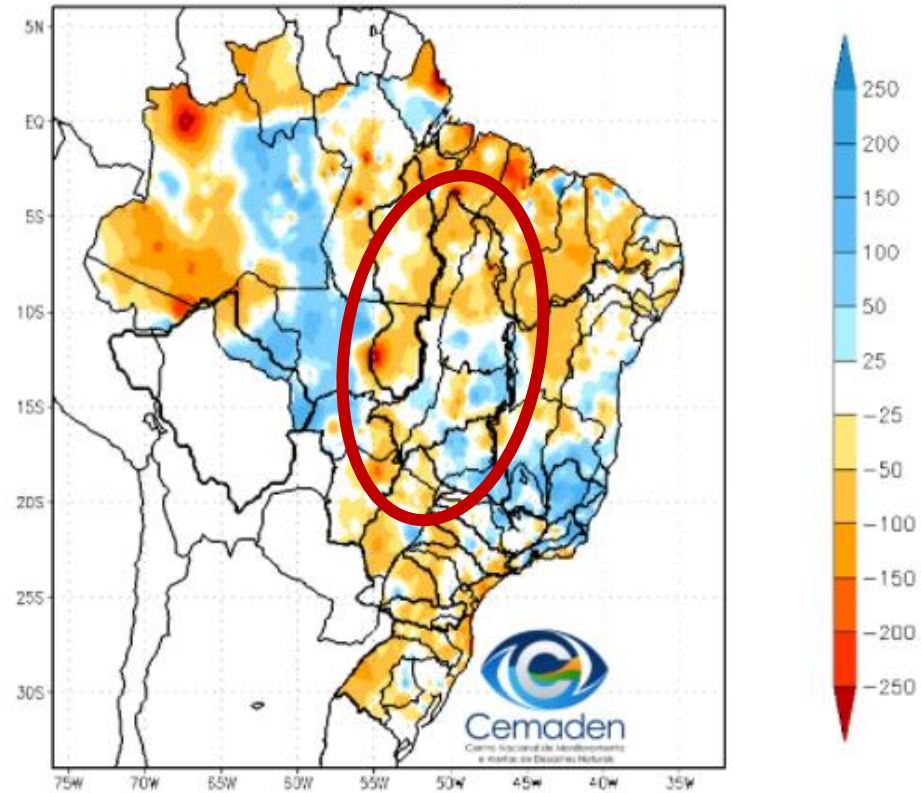


Precipitação acumulada nos últimos 30 dias

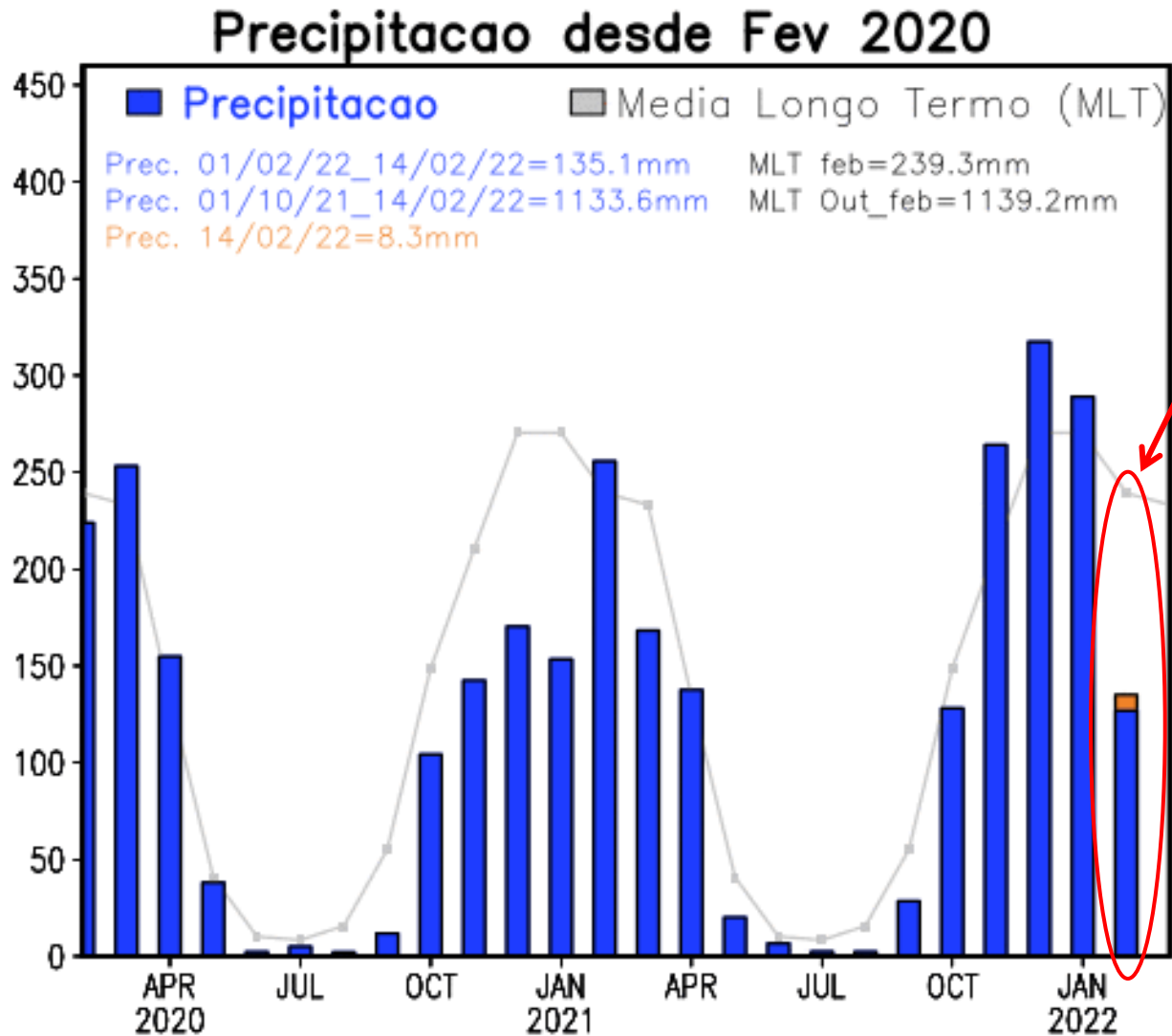
Precipitação Acumulada (mm) A.S.
Período: 16/01/2022 a 15/02/2022



Anomalia de Precipitação (mm) A.S.
Período: 16/01/2022 a 15/02/2022



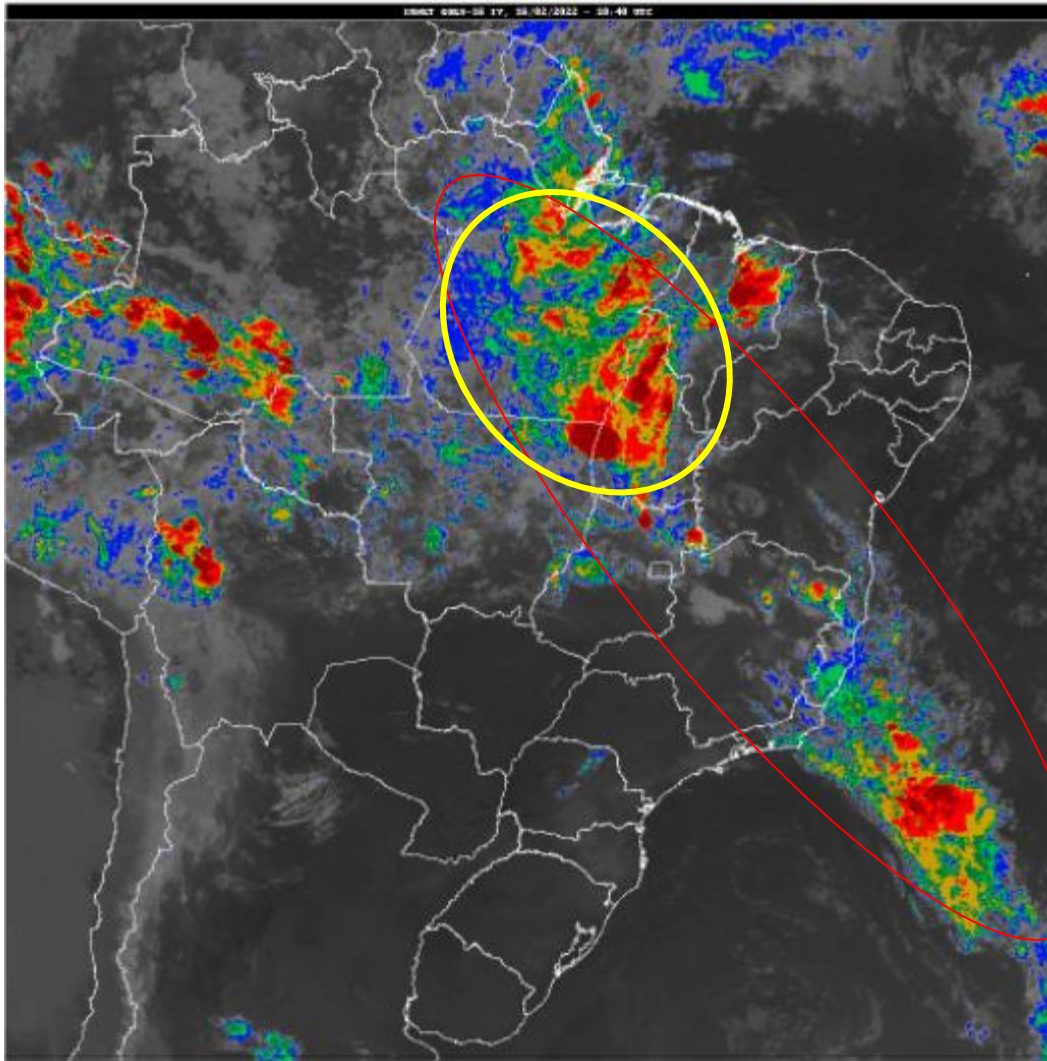
Evolução da Precipitação



Fev. (até dia 14):
56%

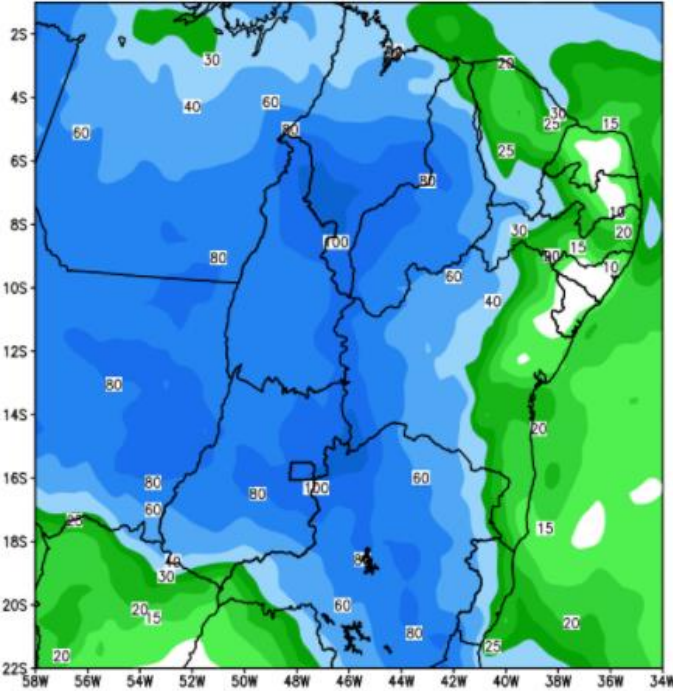
FONTE:
INPE

Situação meteorológica atual

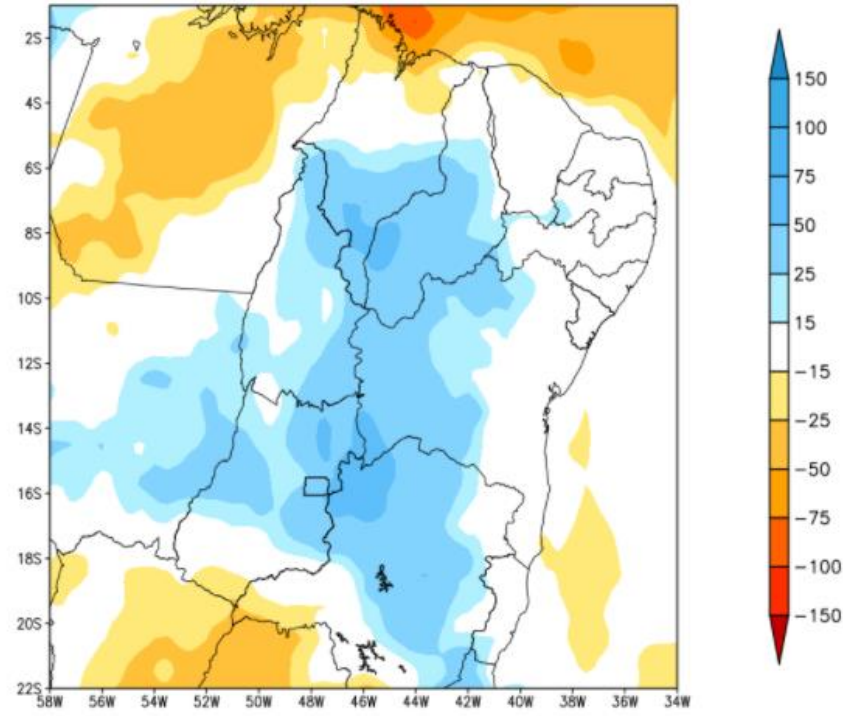


Previsão de chuva próximos 7 dias

GEFS / BRASIL_NE
Precipitacao acumulada 1aSem (mm)
Previsao das 00Z dia 16/02/2022



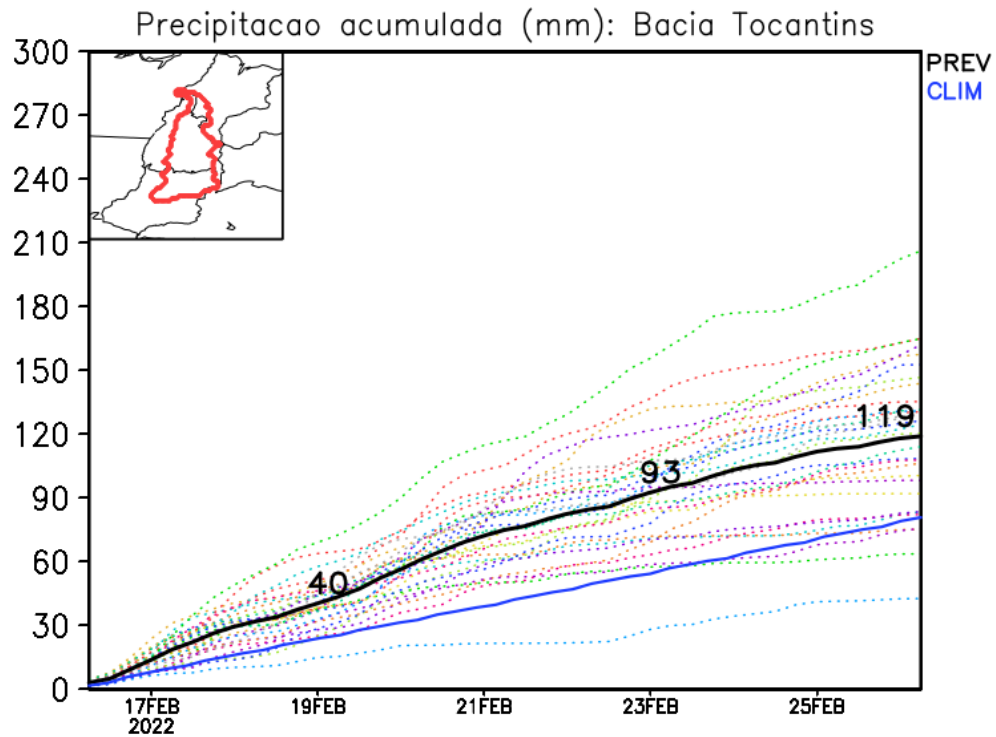
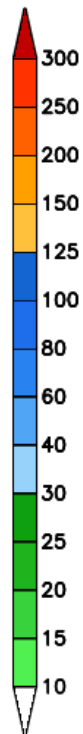
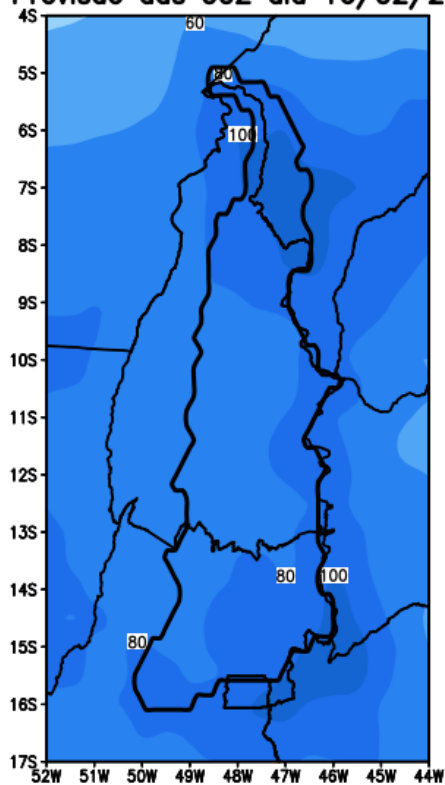
Anomalia de Precipitacao BR NE (mm)
Periodo: 2022021600 a 2022022300



Fonte: GFS/NOAA

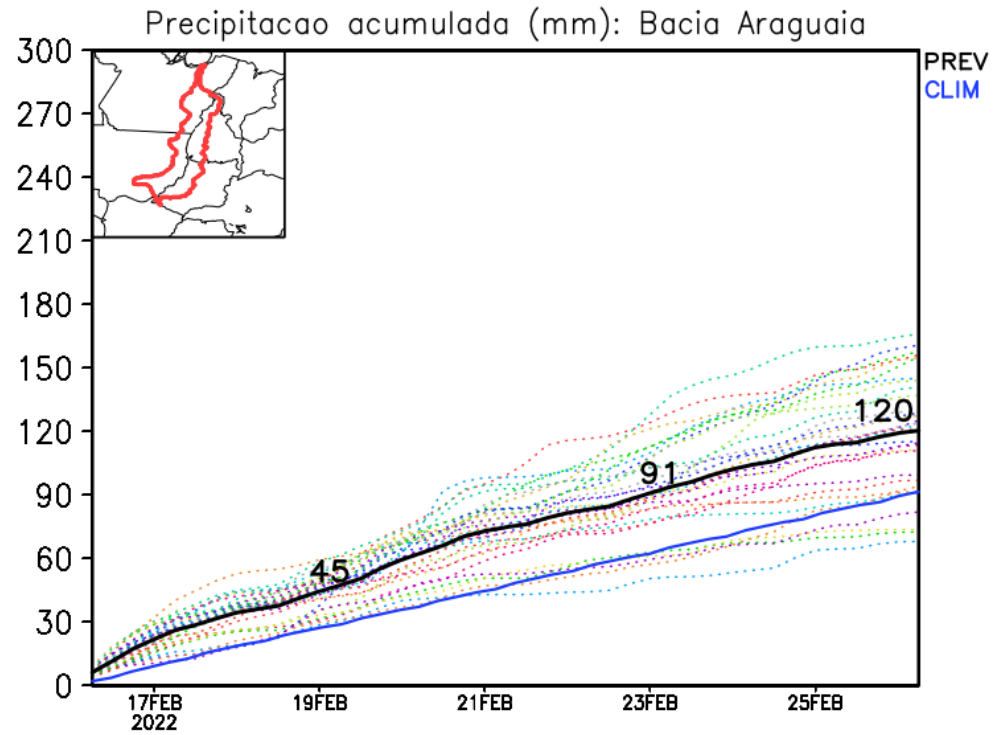
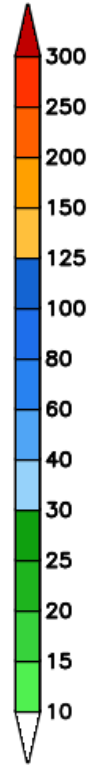
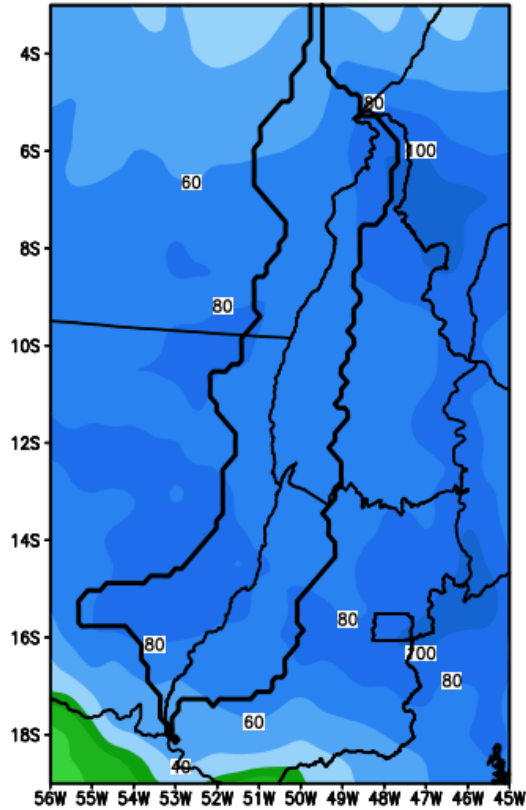
Previsão Bacia Rio Tocantins

GEFS / Bacia Tocantins
Precipitacao acumulada em 7 dias (mm)
Previsao das 00Z dia 16/02/2022

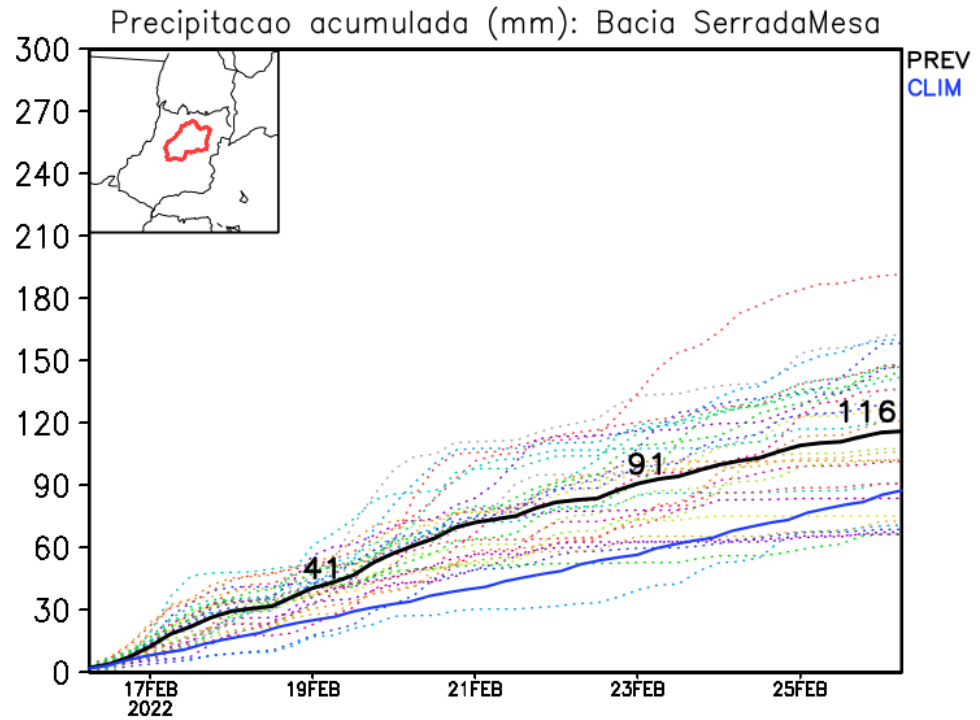
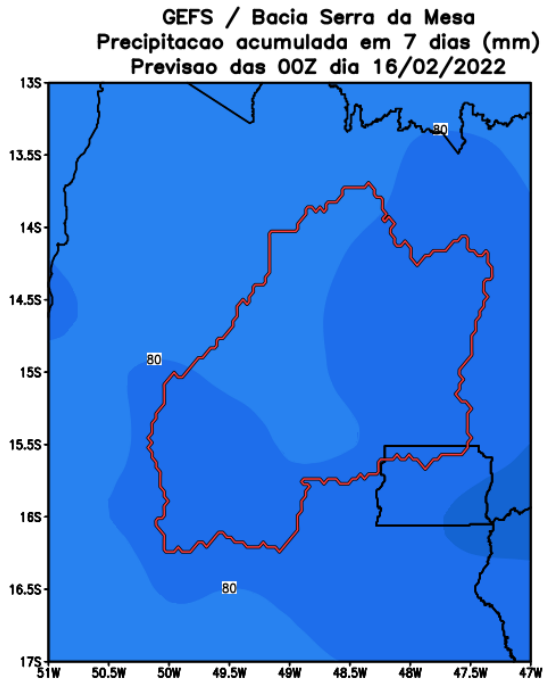


Previsão Bacia Rio Araguaia

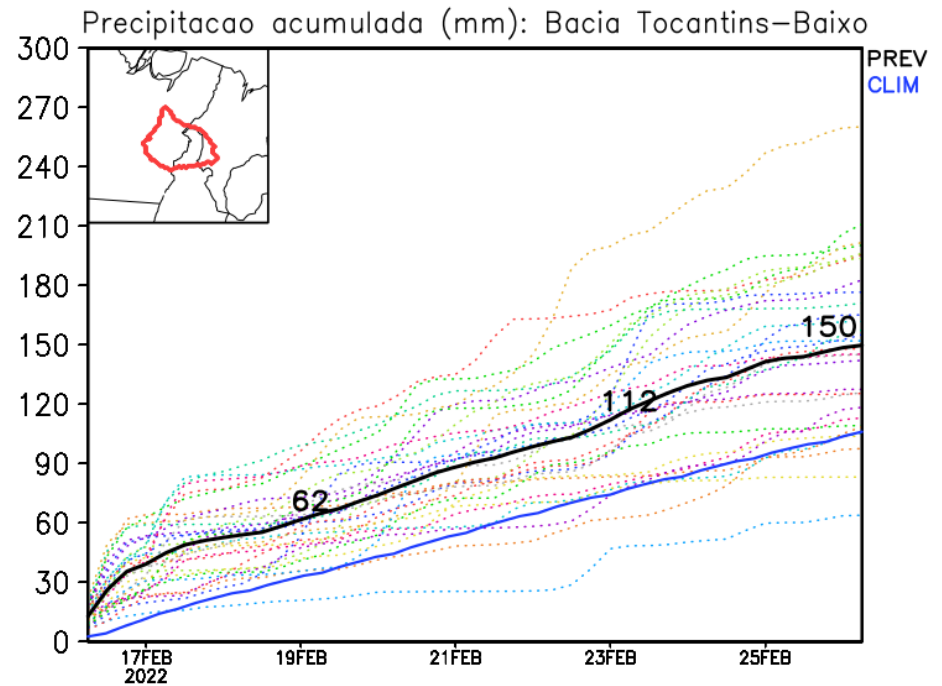
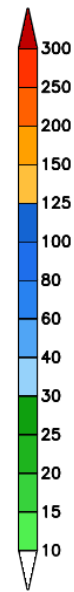
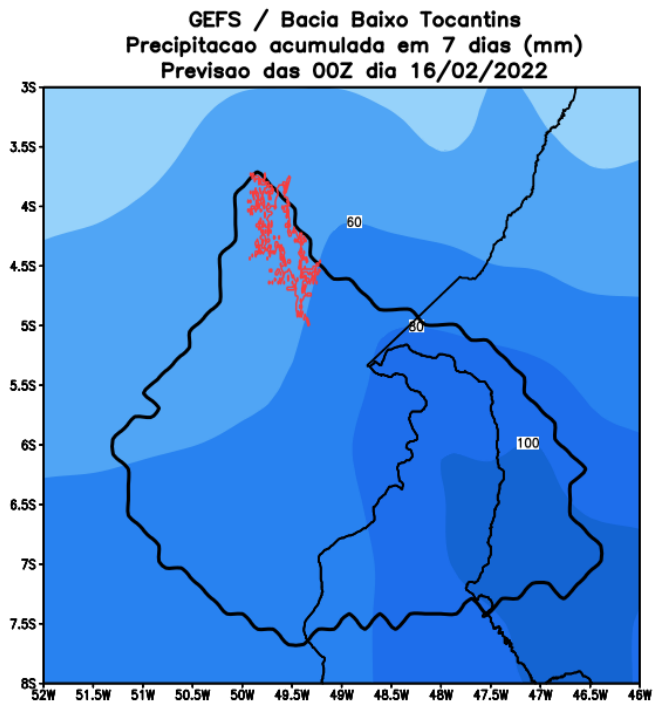
GEFS / Bacia do Rio Araguaia
Precipitação acumulada em 7 dias (mm)
Previsão das 00Z dia 16/02/2022



Previsão Bacia Serra da Mesa

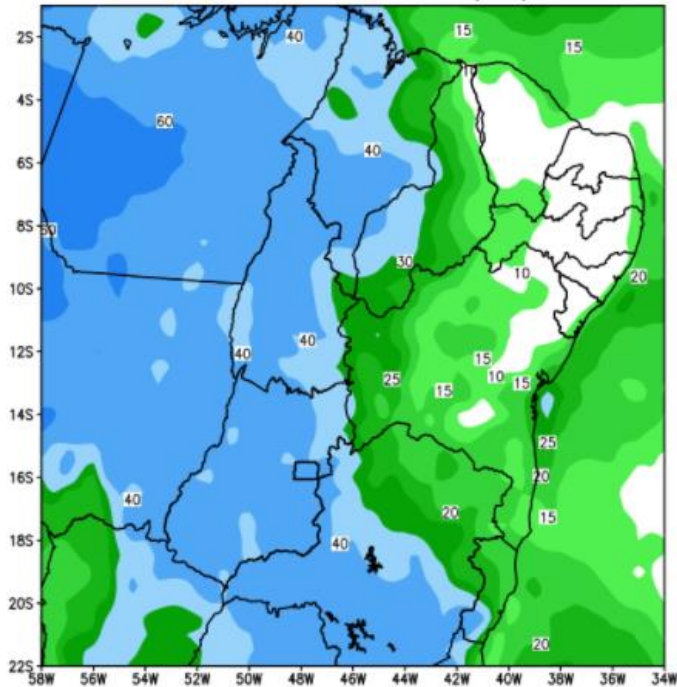


Previsão Bacia Tocantins-Araguaia (Baixo)

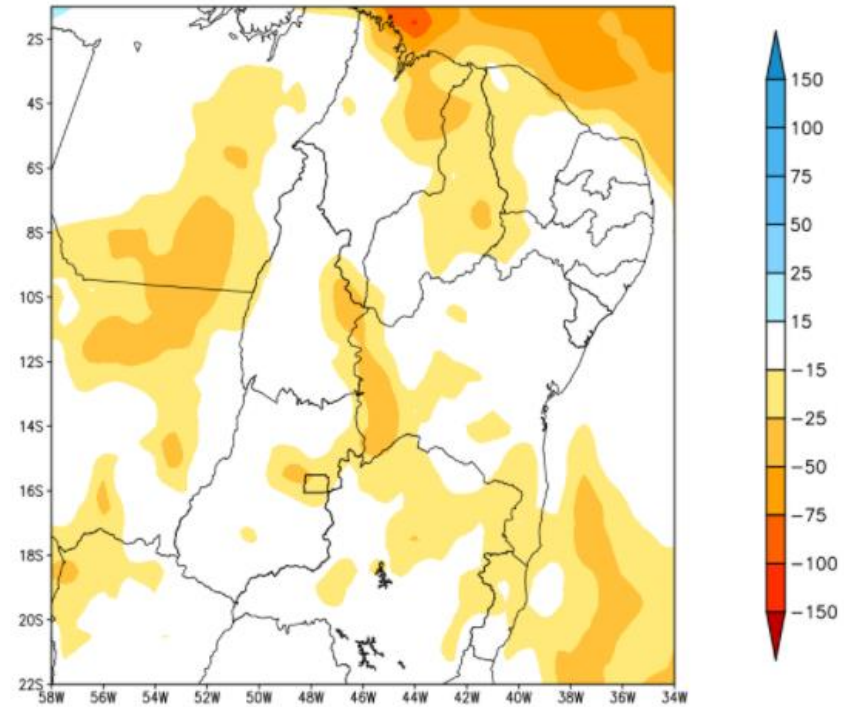


Tendência para a 2a Semana

GEFS / BRASIL_NE
Precipitacao acumulada 2aSem (mm)
Previsao das 00Z dia 16/02/2022

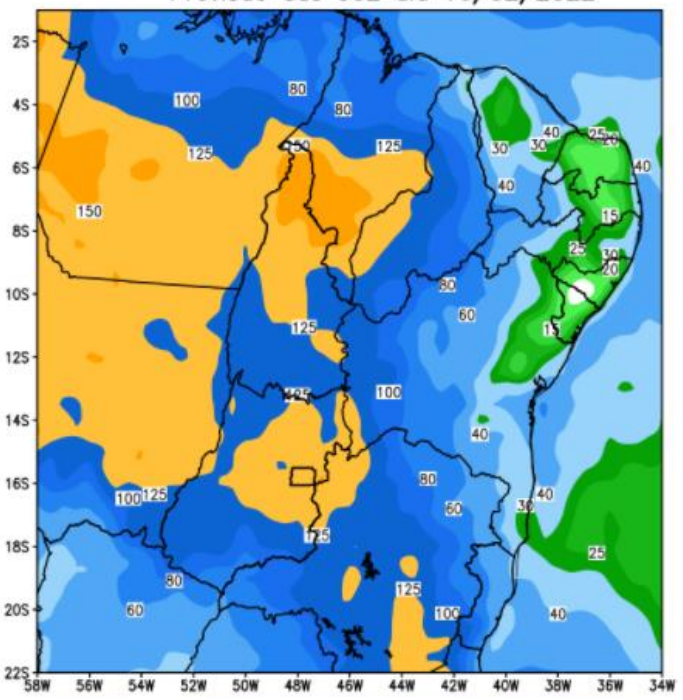


Anomalia de Precipitacao BR_NE (mm)
Periodo: 2022022400 a 2022030200

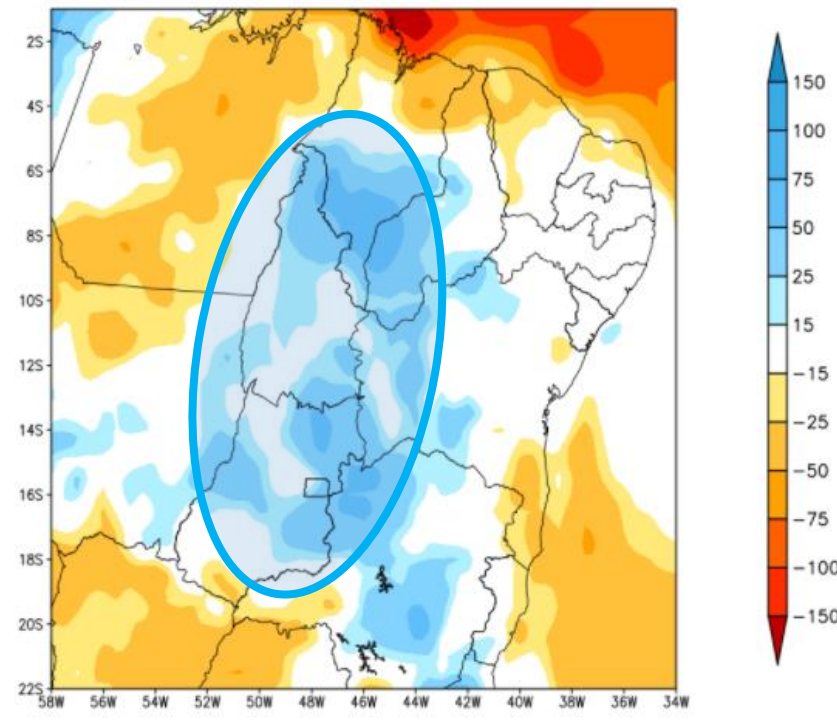


Tendência para as próximas duas semanas

GEFS / BRASIL_NE
Precipitacao acumulada 14 dias (mm)
Previsao das 00Z dia 16/02/2022



Anomalia de Precipitacao BR_NE (mm)
Periodo: 2022021600 a 2022030200

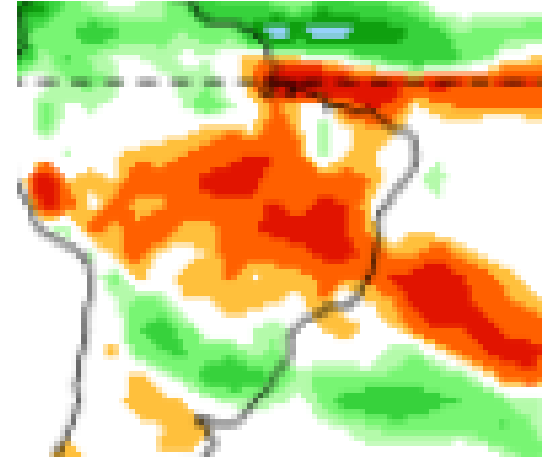
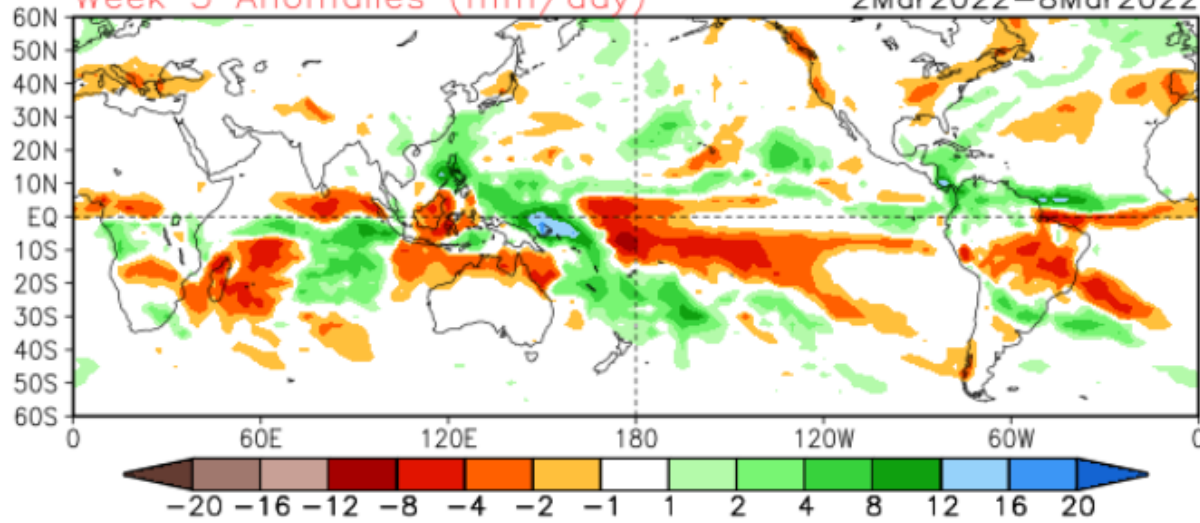


Fonte: GFS/NOAA

Tendência 3a e 4a semanas

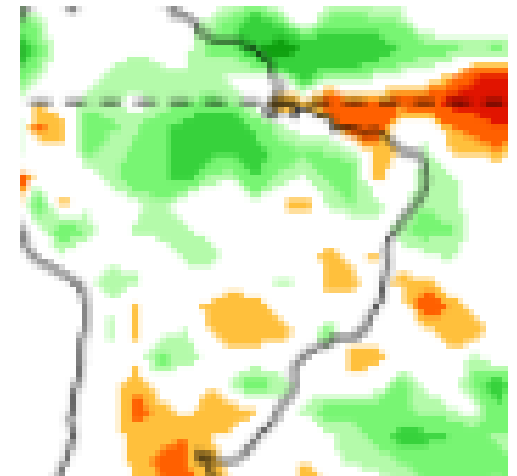
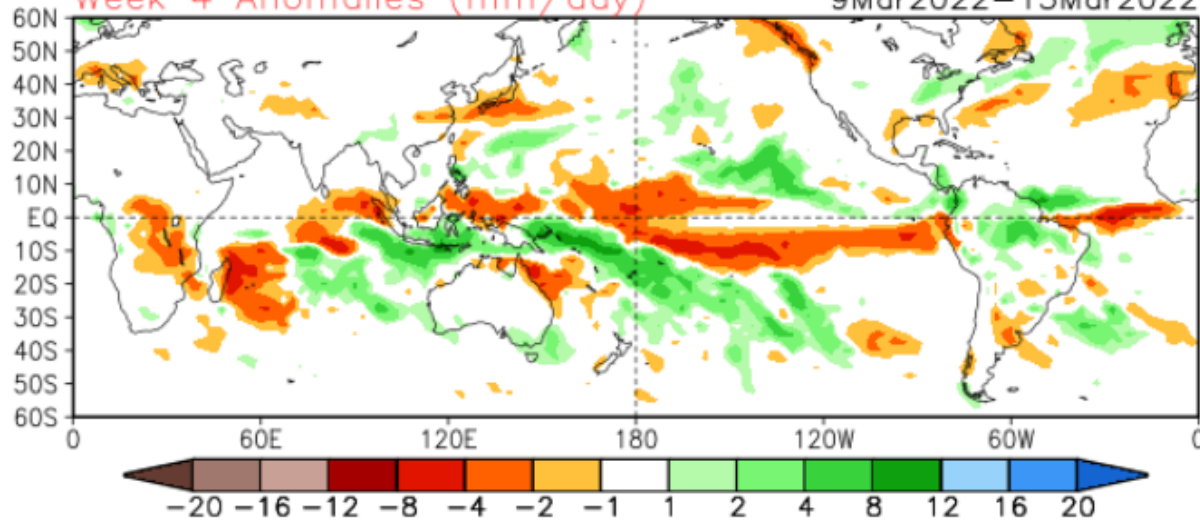
Week 3 Anomalies (mm/day)

2Mar2022–8Mar2022



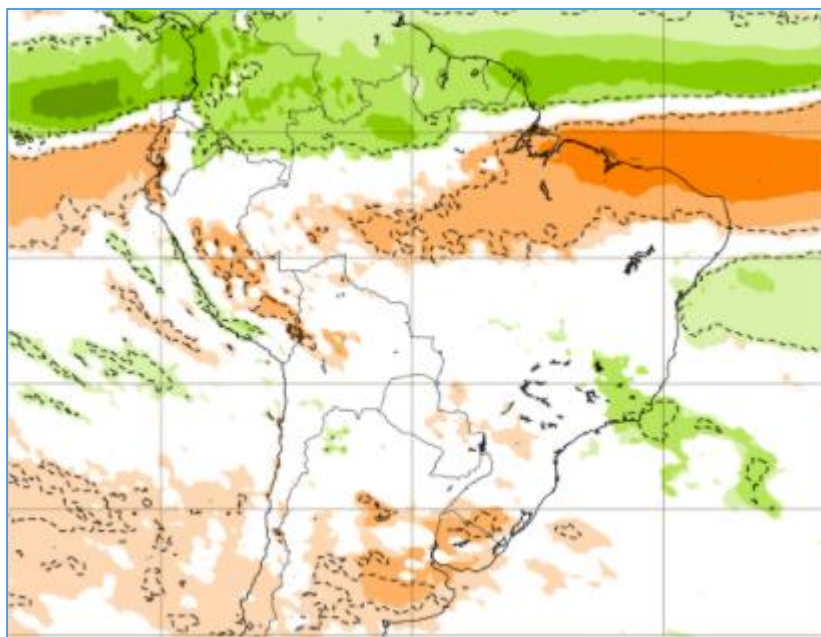
Week 4 Anomalies (mm/day)

9Mar2022–15Mar2022

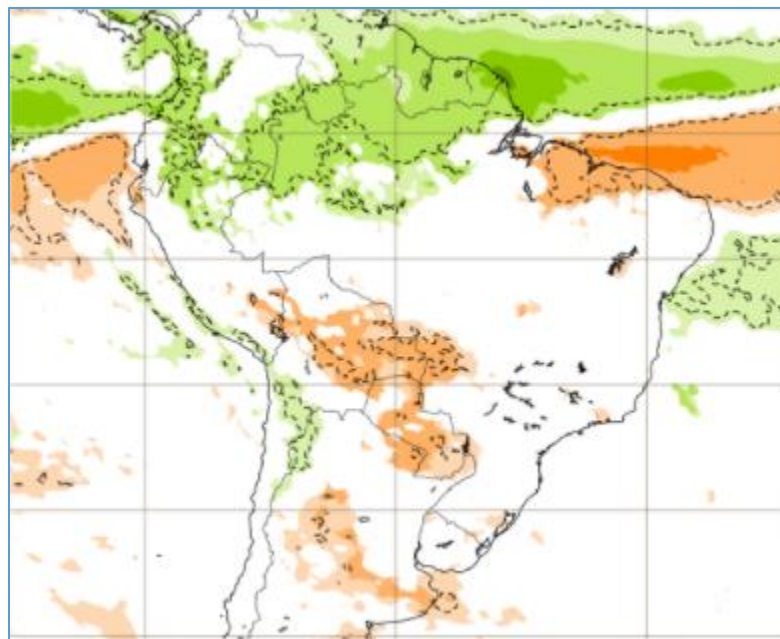


Tendência para 3ª e 4ª semanas

28/02-07/03

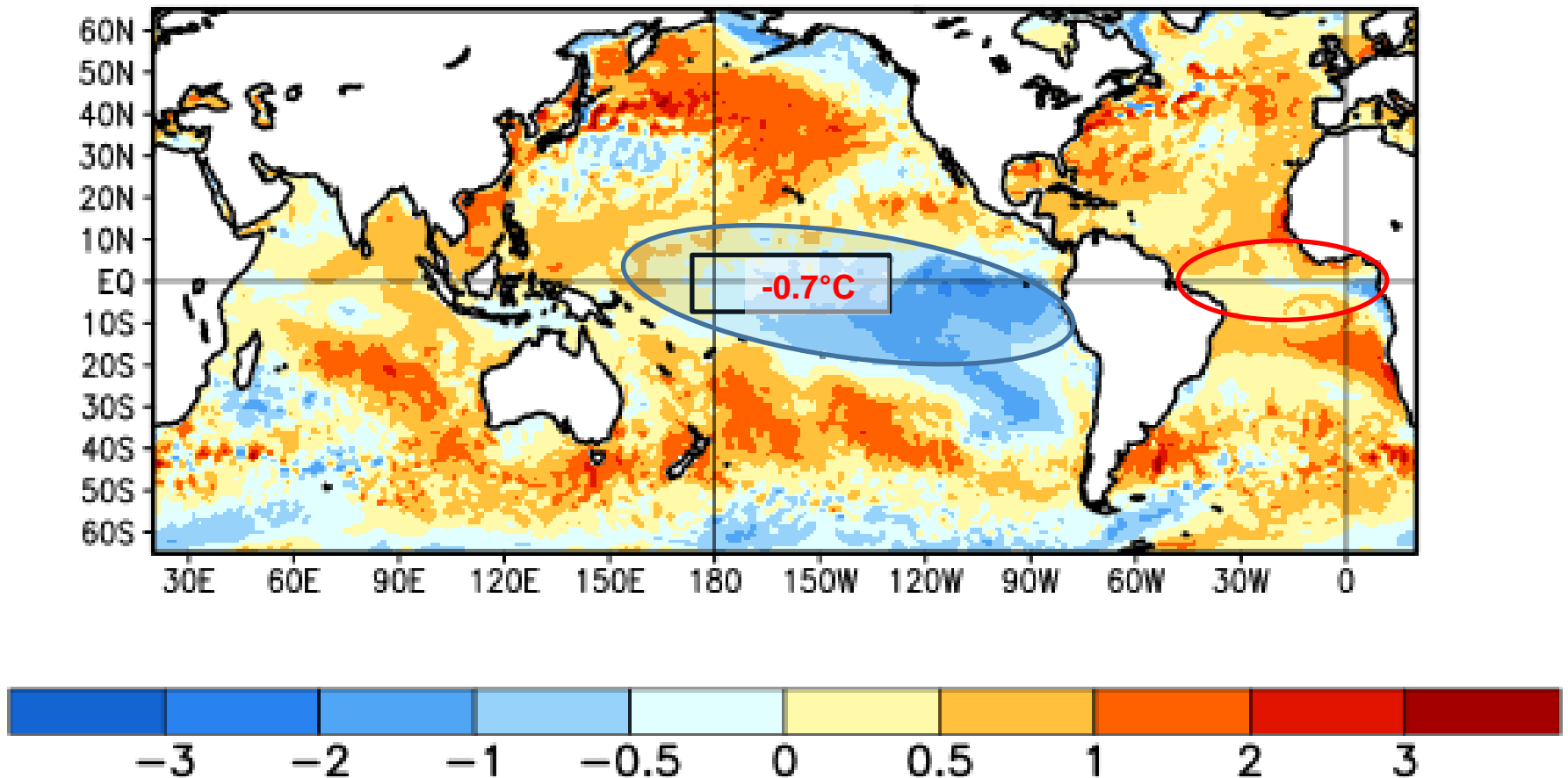


07-14/03



Status Atual: **La Niña**

Average SST Anomalies 16 JAN 2022 – 12 FEB 2022



Previsão sazonal de Chuva (MAM)

