

# Monitoramento da situação da seca na Região Sul

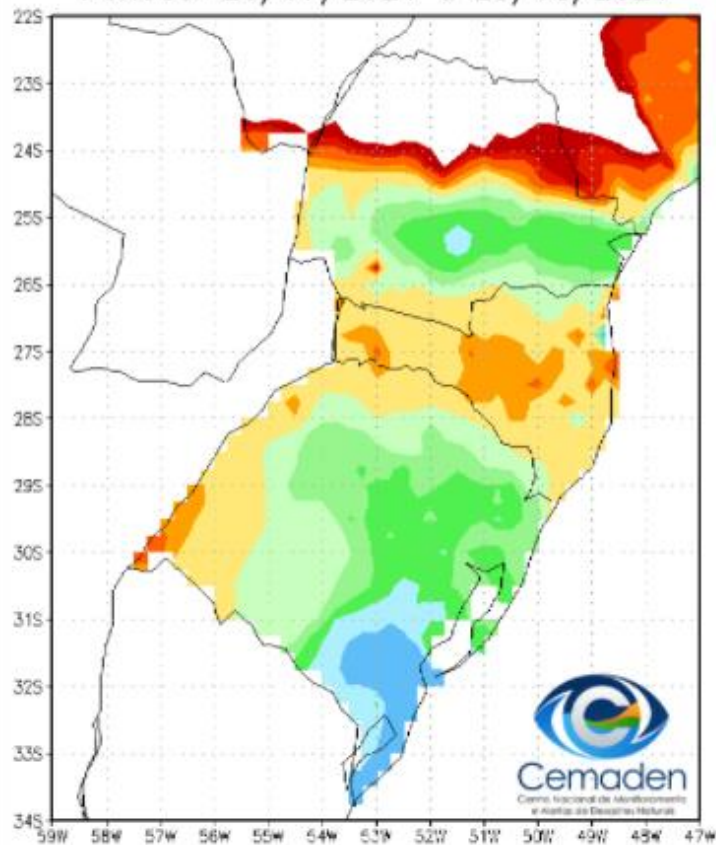


**Cemaden**  
Centro Nacional de Monitoramento  
e Alertas de Desastres Naturais

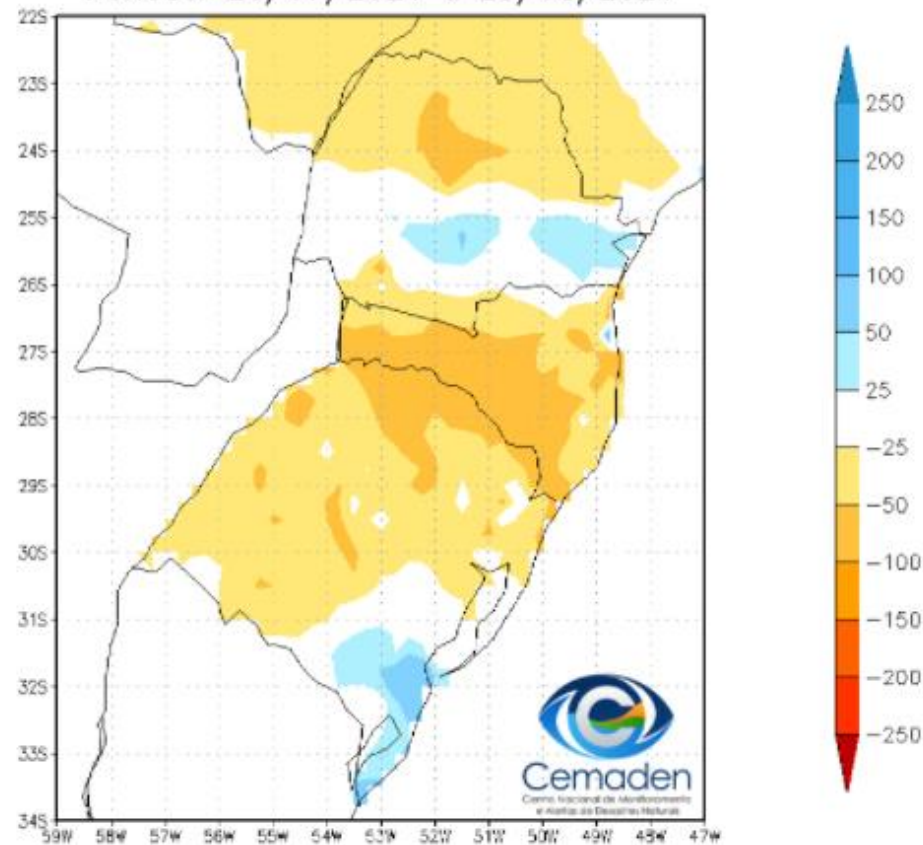
26 de Agosto de 2021

## Precipitação – Região Sul: **últimos 30 dias**

Precipitação Acumulada (mm)  
Período: 26/07/2021 a 25/08/2021

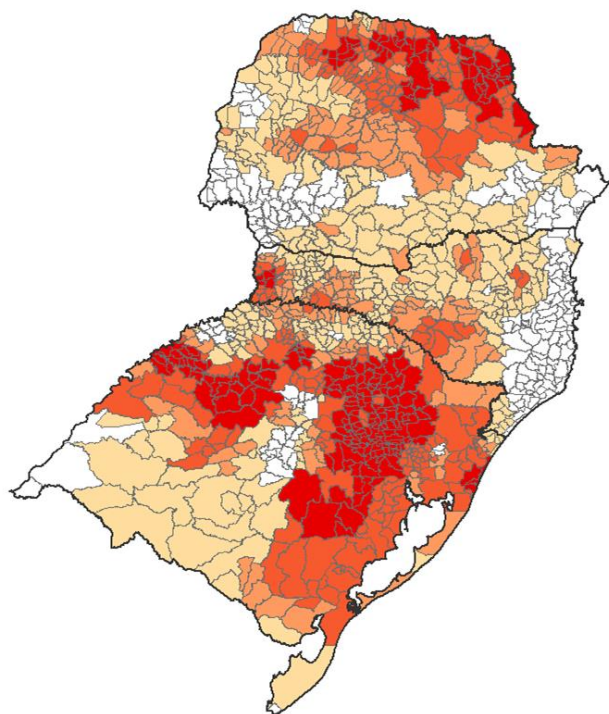


Anomalia de Precipitação (mm)  
Período: 26/07/2021 a 25/08/2021

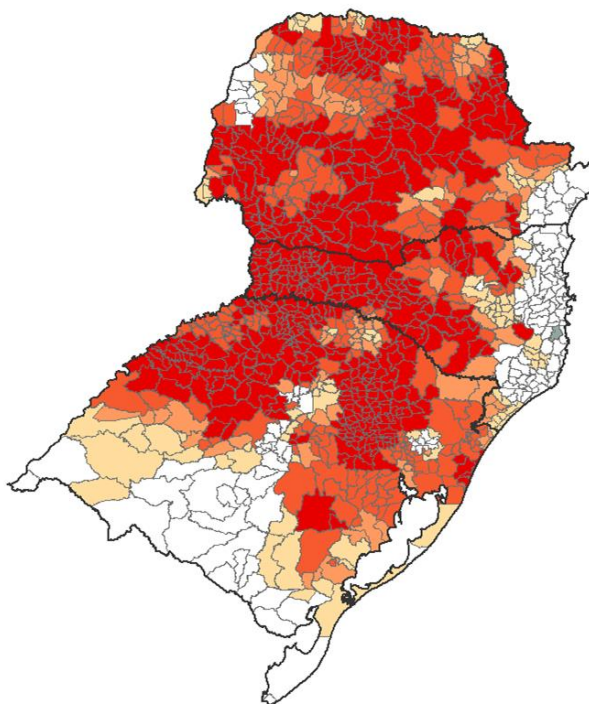


## SPI: Agosto de 2021 (até dia 20/08)

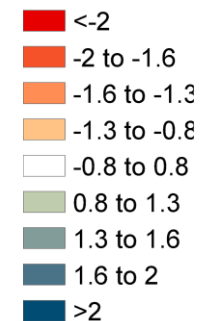
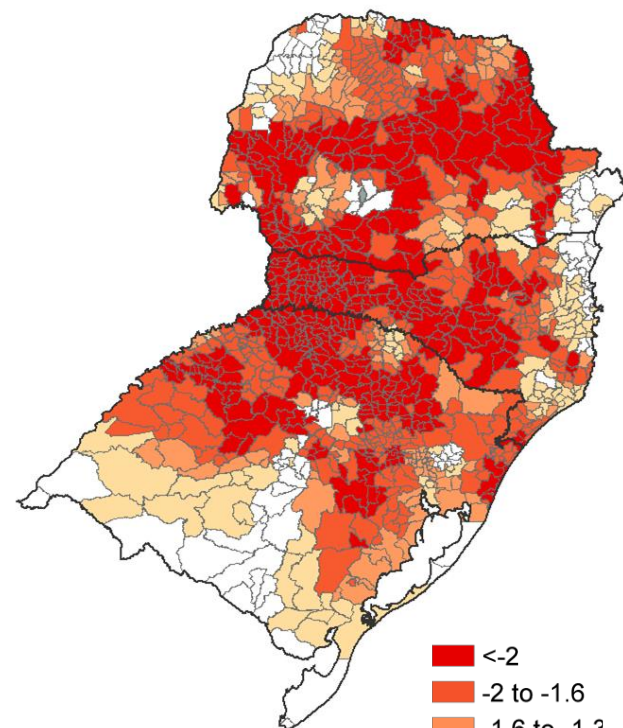
SPI03



SPI12

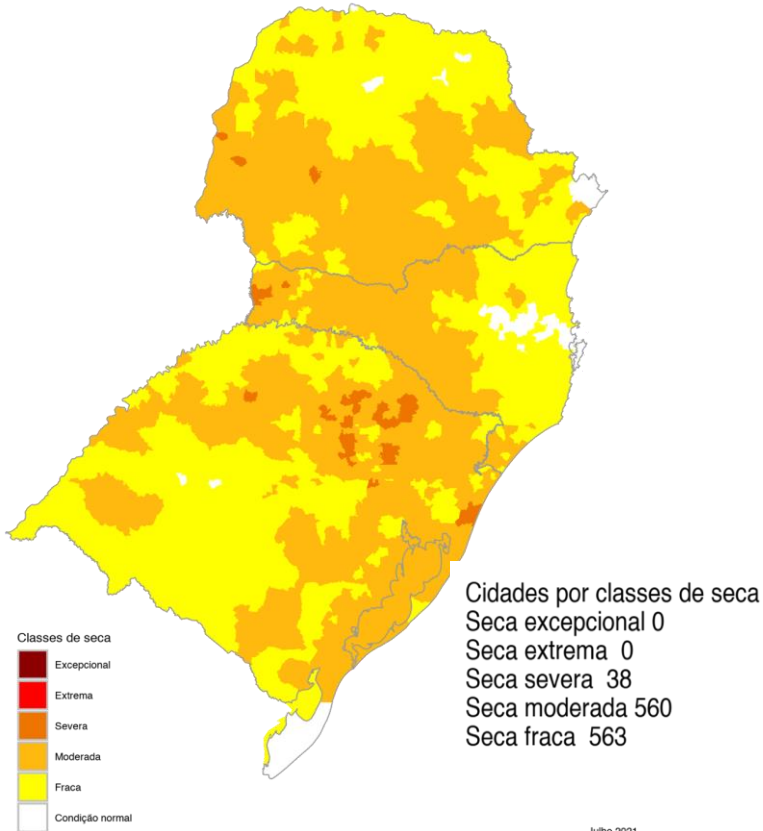


SPI24



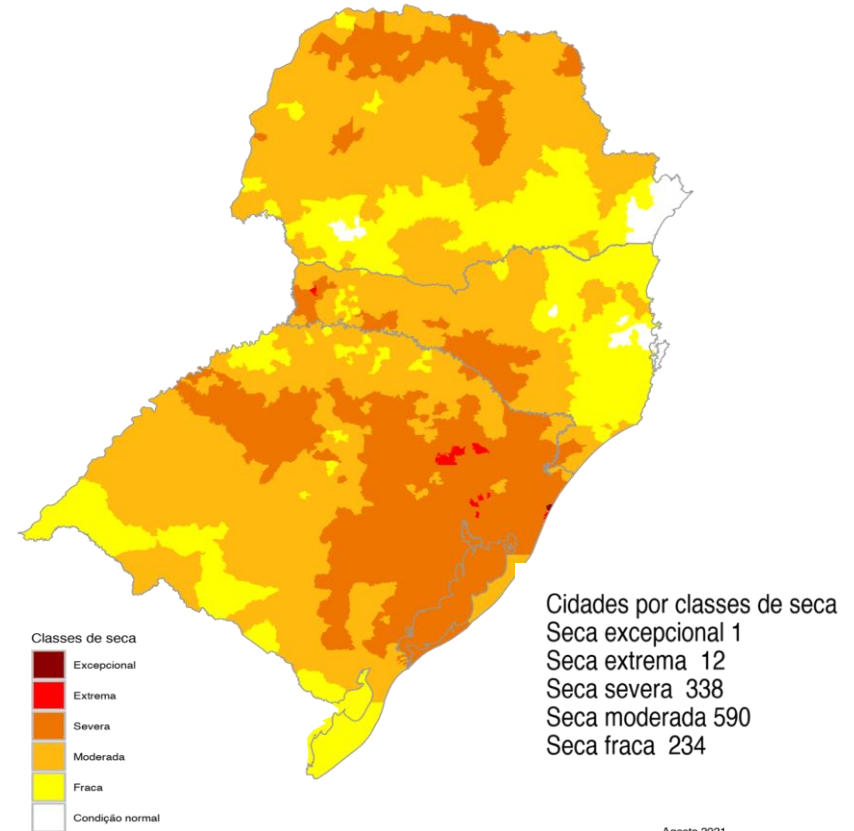
# Índice Integrado de Seca – IIS3 (SPI3, VHI, Umidade do Solo)

16 de Julho de 2021



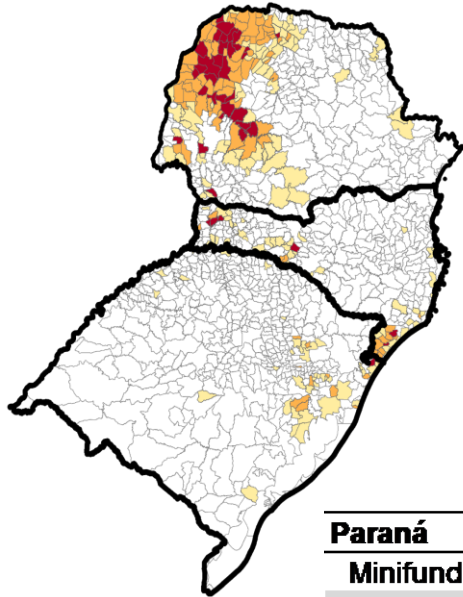
Julho 2021  
Índice Integrado de Seca (SPI3,VHI,AUS)  
Dados: CPTEC/INPE - NOAA - NASA/SMAP / Preparação: Cemaden/MCTI

25 de agosto de 2021



Agosto 2021  
Índice Integrado de Seca (SPI3,VHI,AUS)  
Dados: CPTEC/INPE - NOAA - NASA/SMAP / Preparação: Cemaden/MCTI

# Áreas Agroprodutivas afetadas pela seca – Região Sul: 19/08



	40 a 60%	60 - 80%	> 80%
<b>Paraná</b>			
<b>Minifundio</b>	37232 (14%)	31902 (12%)	13440 (5%)
Pequena Propriedade	20308 (16%)	17579 (14%)	7003 (5%)
<b>Media Propriedade</b>	4108 (15%)	3994 (15%)	1902 (7%)
<b>Santa Catarina</b>			
<b>Minifundio</b>	34691 (15%)	13531 (6%)	5235 (2%)
Pequena Propriedade	8411 (10%)	2689 (3%)	1223 (1%)
<b>Media Propriedade</b>	517 (5%)	101 (1%)	40 (*)
<b>Rio Grande do Sul</b>			
<b>Minifundio</b>	21838 (6%)	2838 (1%)	940 (*)
Pequena Propriedade	8131 (6%)	1459 (1%)	134 (*)
<b>Media Propriedade</b>	1081 (4%)	288 (1%)	3 (*)

(\*) Porcentagem inferior a 1%.

Julho

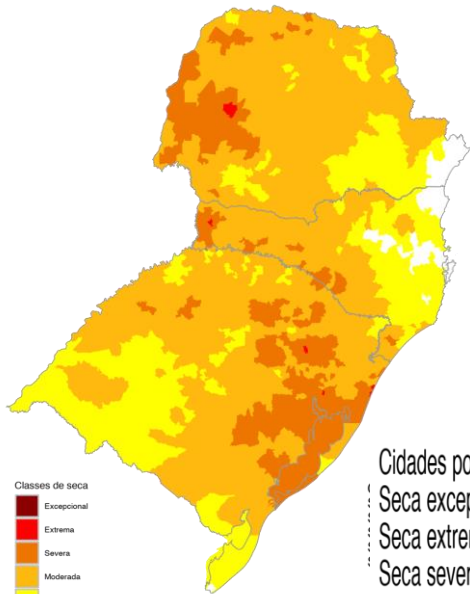
Imóveis Rurais Impactados > 40%	Imóveis Rurais Impactados > 40%
82574 (32%)	57621 (22%)
44890 (35%)	30952 (24%)
10004 (37%)	7266 (27%)
53457 (23%)	10283 (4%)
12323 (15%)	2100 (3%)
658 (6%)	125 (1%)
25616 (7%)	2149 (6%) <sup>1</sup>
9724 (7%)	9720 (7%)
1372 (6%)	4191 (17%)

\*Estimativa a partir dos dados do Cadastro Ambiental Rural para minifúndios, pequenas e médias propriedades e VHI (Satélite)

# Cenários IIS6: Região Sul: **Setembro/21**

Chuva 30% **ACIMA** da média

Chuva 30% **ABAIXO** da média

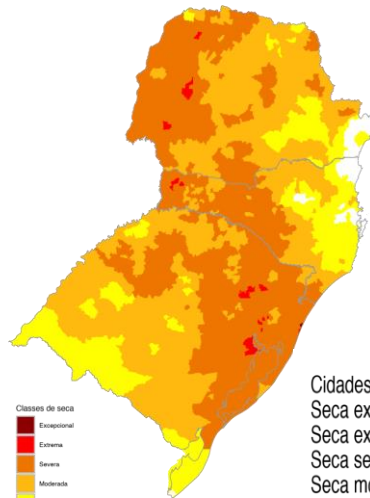


Cidades por classes de seca

- Seca excepcional 0
- Seca extrema 6
- Seca severa 214
- Seca moderada 704
- Seca fraca 234

Índice  
Dados: CPTEC/INPE - NOAA - NASA/S

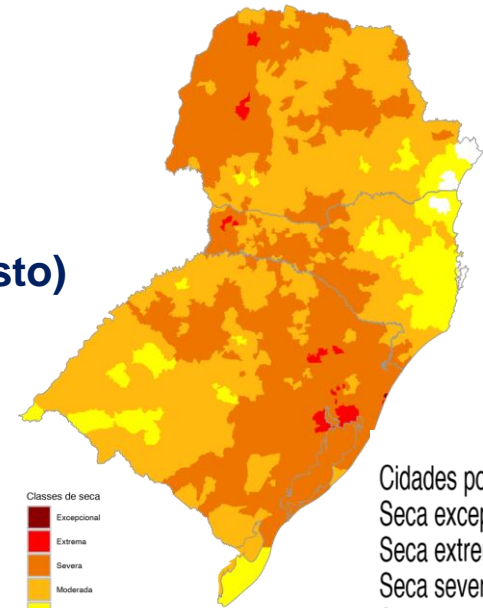
IIS6 observado (25 de agosto)



Cidades por classes de seca

- Seca excepcional 1
- Seca extrema 20
- Seca severa 554
- Seca moderada 450
- Seca fraca 144

Índice  
Dados: CPTEC/INPE - NOAA - NASA/S

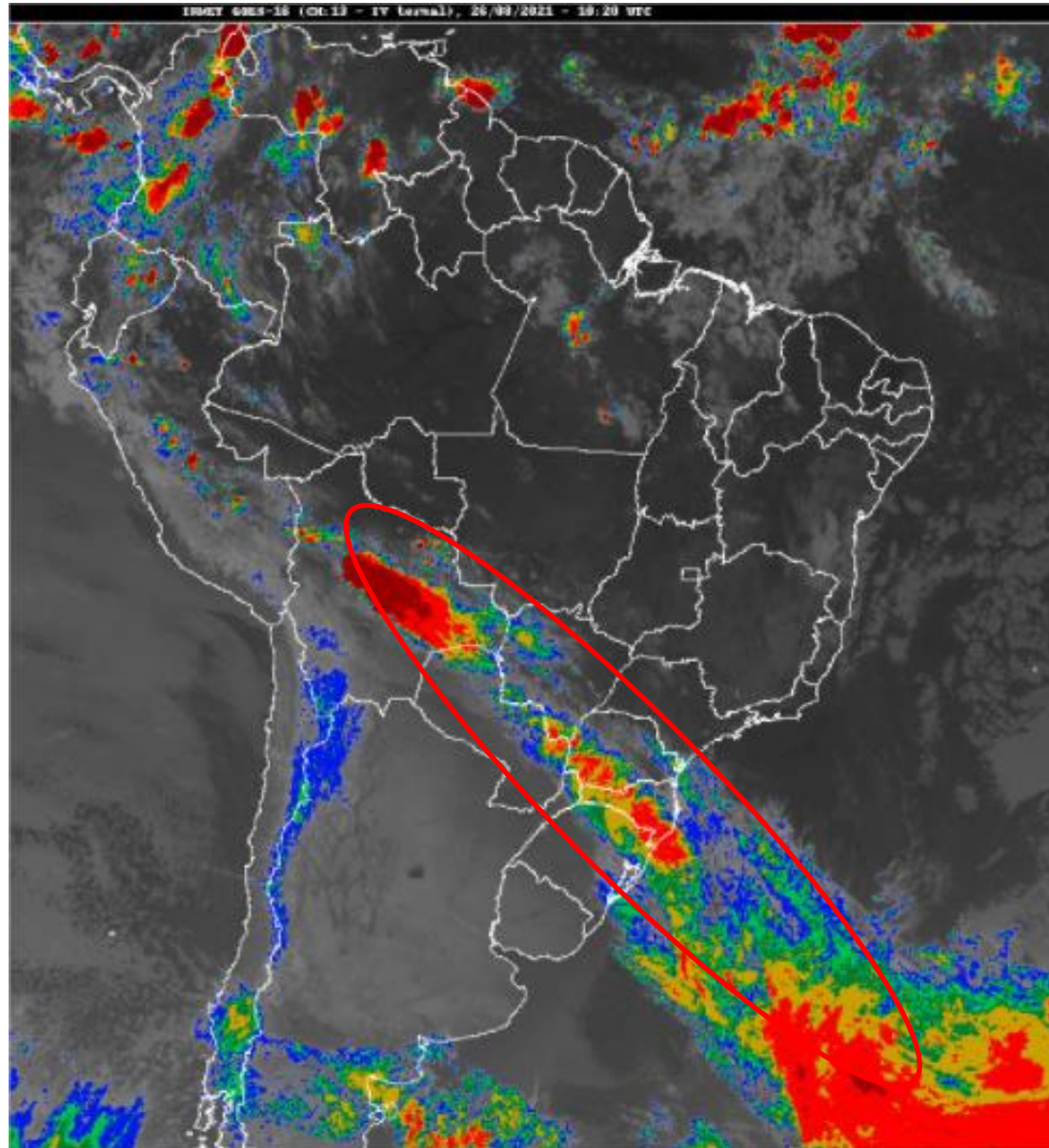


Cidades por classes de seca

- Seca excepcional 1
- Seca extrema 21
- Seca severa 538
- Seca moderada 506
- Seca fraca 122

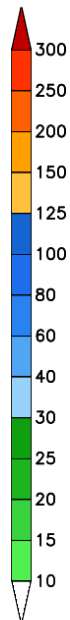
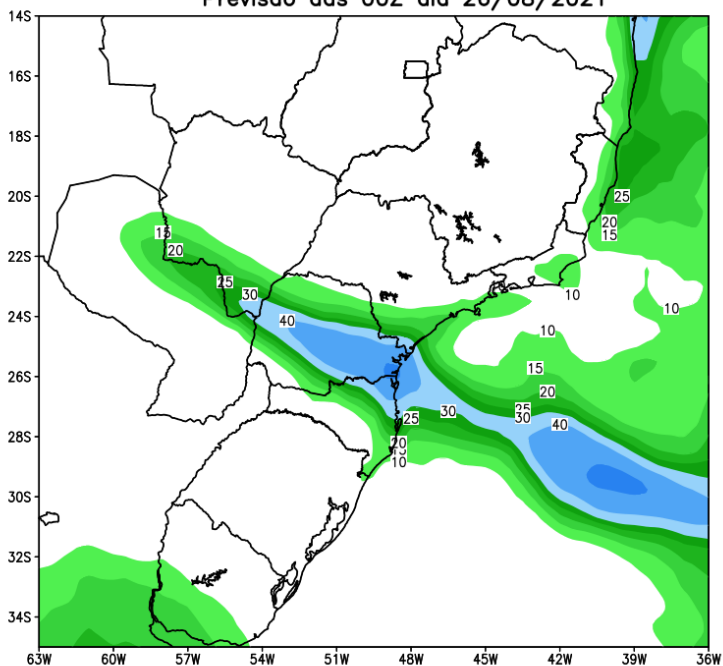
Índice  
Dados: CPTEC/INPE - NOAA - NASA/S

# Situação meteorológica atual

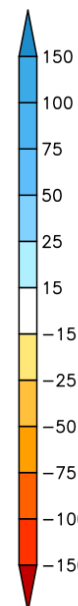
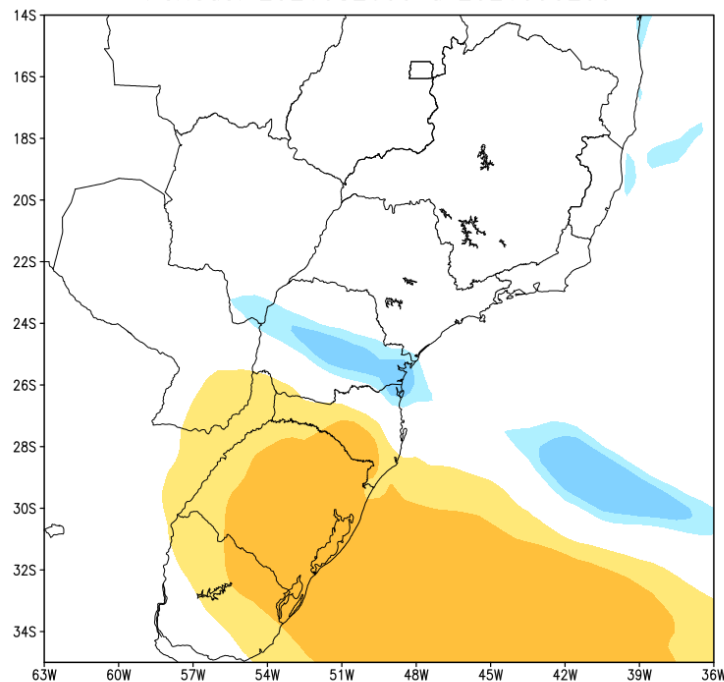


# Previsão de chuva próximos 7 dias

GEFS / BRASIL\_SUL  
Precipitação acumulada 1aSem (mm)  
Previsão das 00Z dia 26/08/2021



Anomalia de Precipitação BR SUL (mm)  
Período: 2021082600 a 2021090200

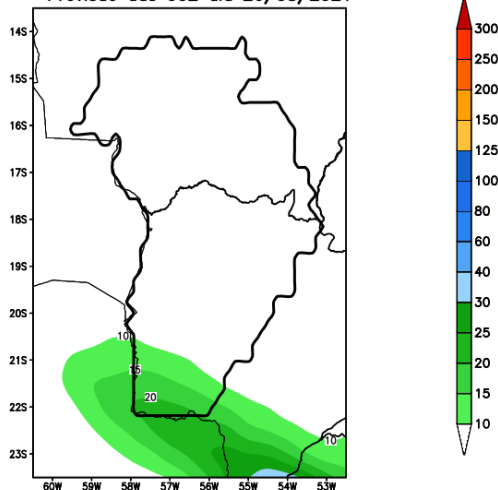


MODELO GFS

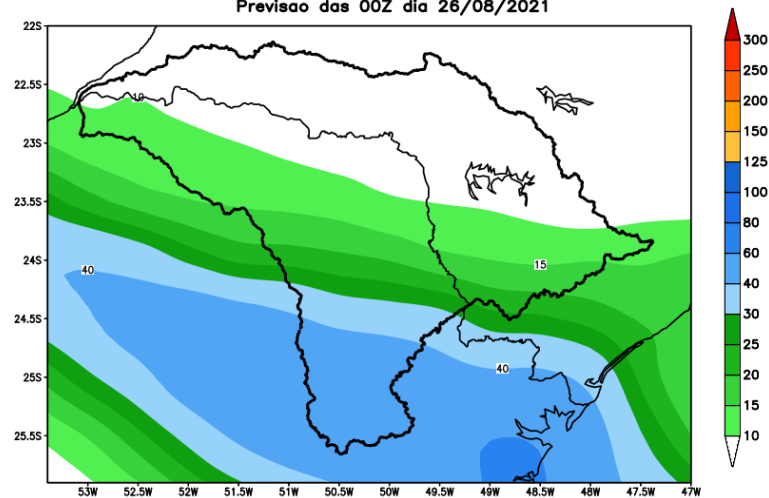


# Previsão para as principais bacias

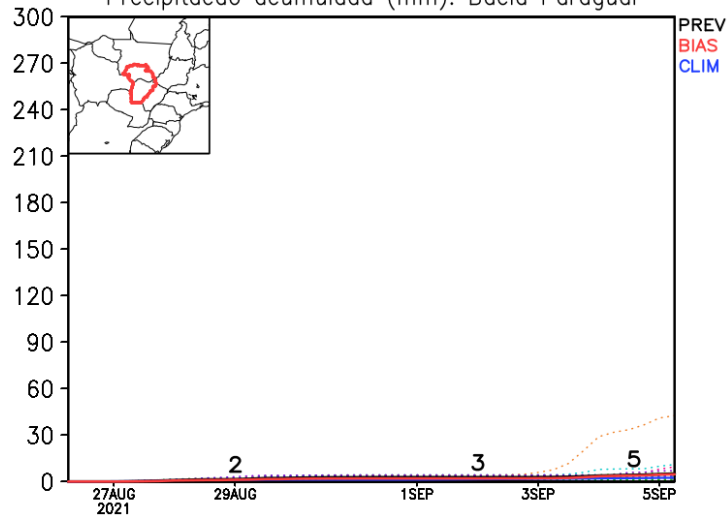
GEFS / Bacia do Rio Paraguai  
Precipitação acumulada em 7 dias (mm)  
Previsão das 00Z dia 26/08/2021



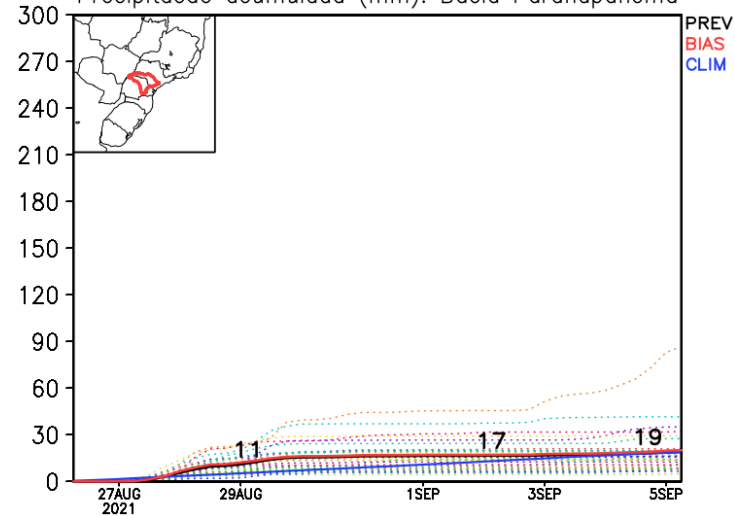
GEFS / Bacia do Rio Paranapanema  
Precipitação acumulada em 7 dias (mm)  
Previsão das 00Z dia 26/08/2021



Precipitação acumulada (mm): Bacia Paraguai

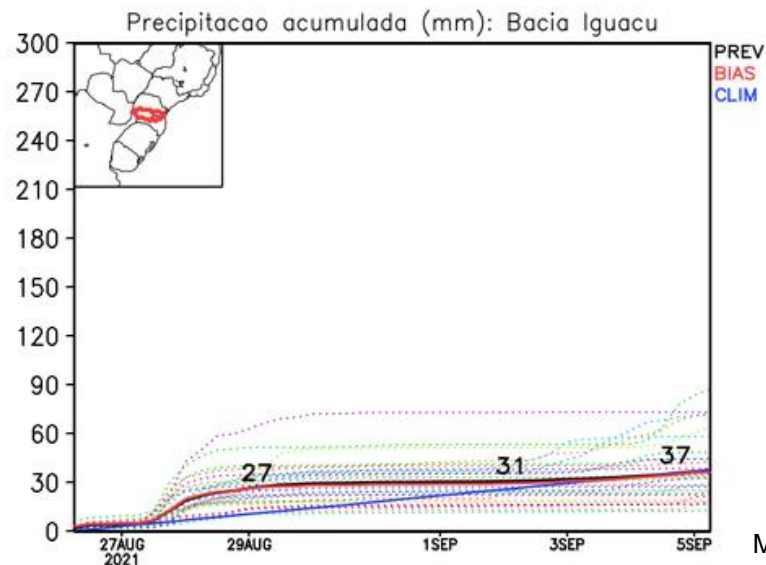
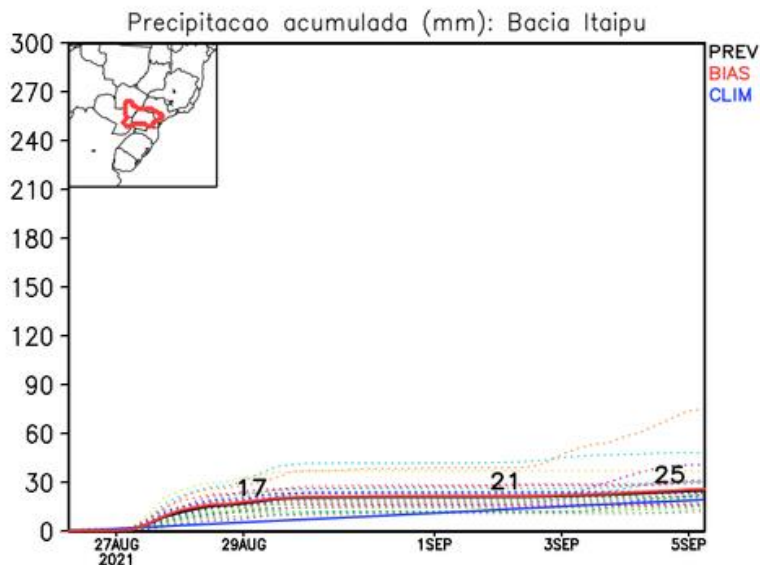
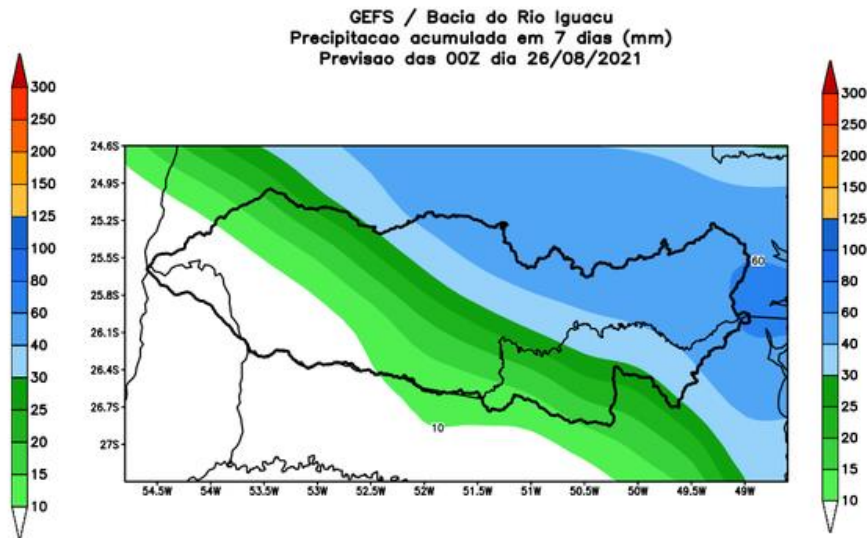
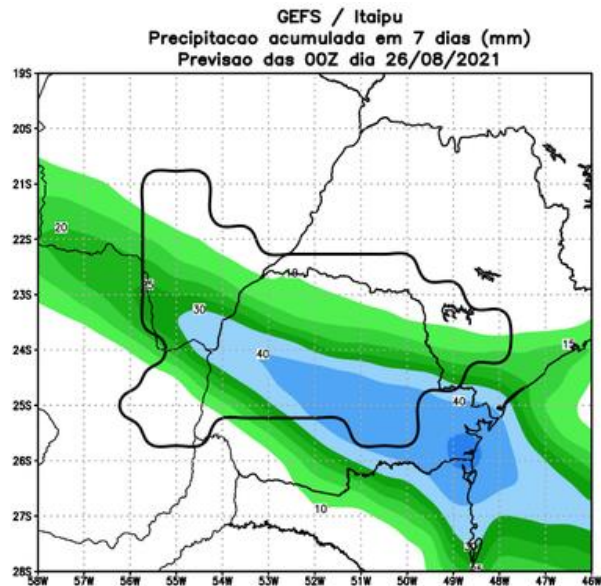


Precipitação acumulada (mm): Bacia Paranapanema



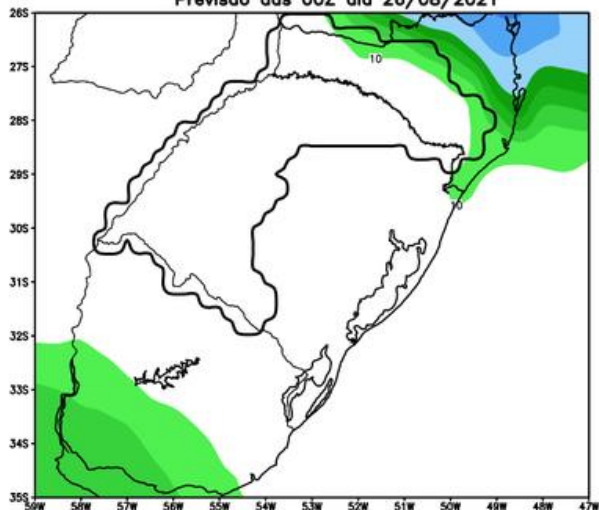
MODELO GFS

# Previsão para as principais bacias

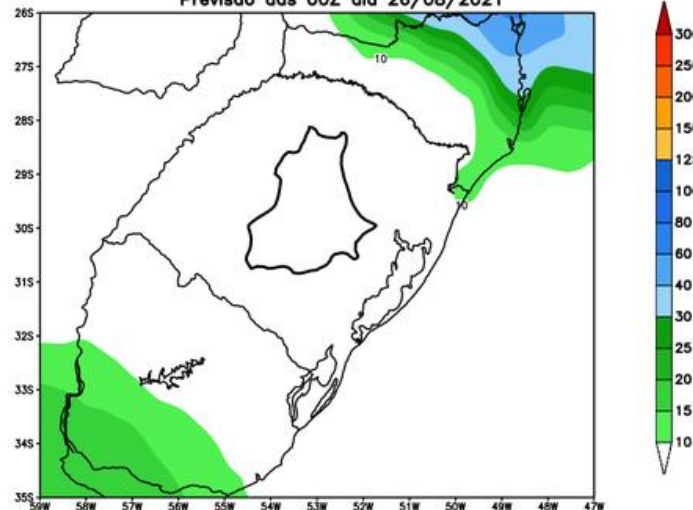


# Previsão para as principais bacias

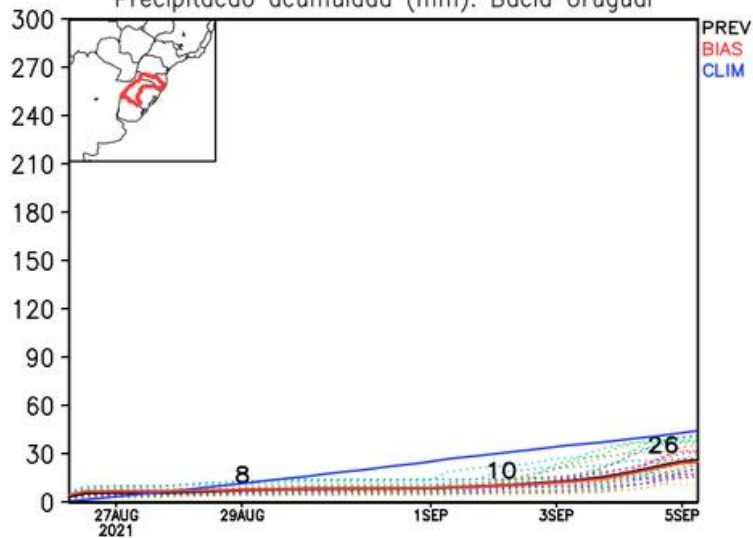
GEFS / Bacia do Rio Uruguai  
Precipitacao acumulada em 7 dias (mm)  
Previsao das 00Z dia 26/08/2021



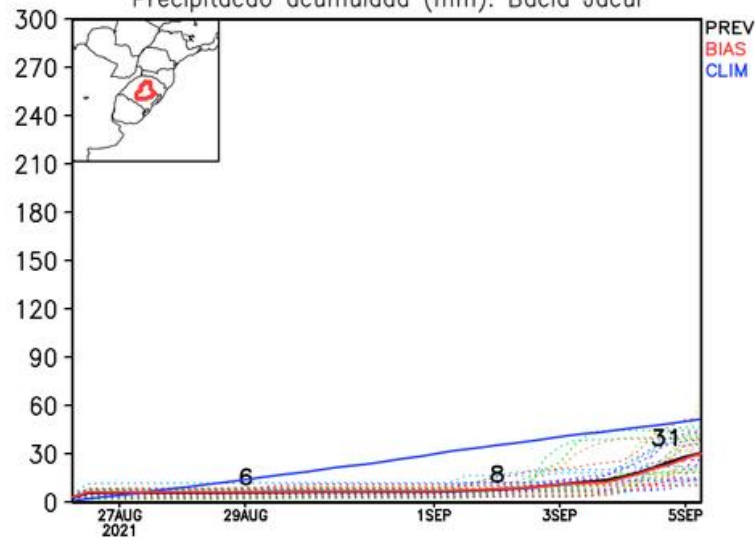
GEFS / Bacia do Rio Jacui  
Precipitacao acumulada em 7 dias (mm)  
Previsao das 00Z dia 26/08/2021



Precipitacao acumulada (mm): Bacia Uruguai

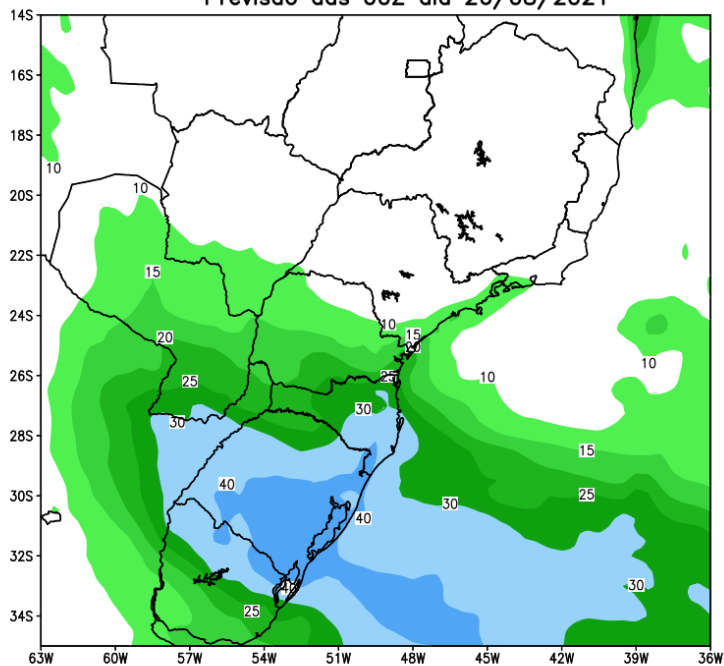


Precipitacao acumulada (mm): Bacia Jacui

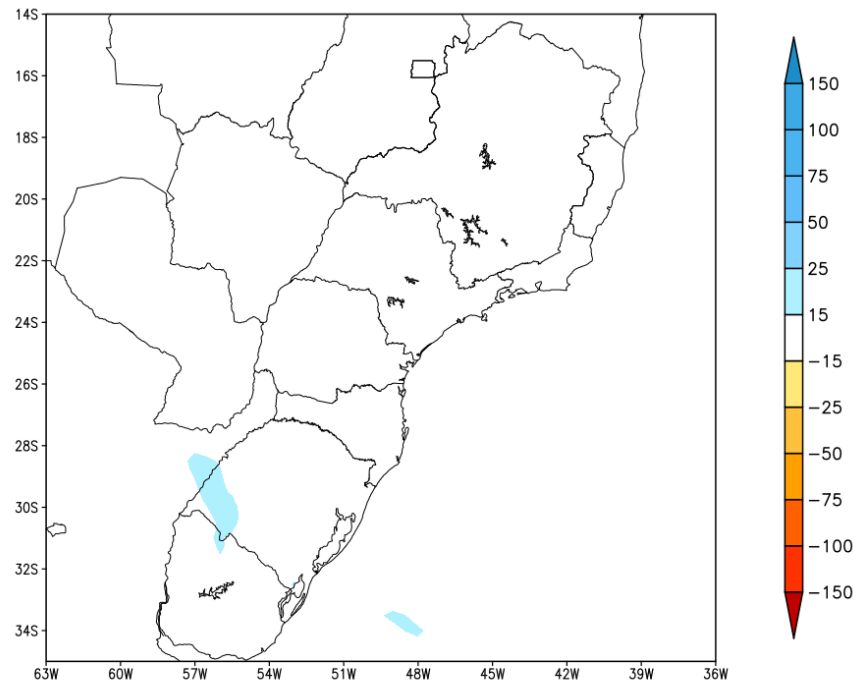


# Tendência para a segunda semana

GEFS / BRASIL\_SUL  
Precipitacao acumulada 2aSem (mm)  
Previsao das 00Z dia 26/08/2021



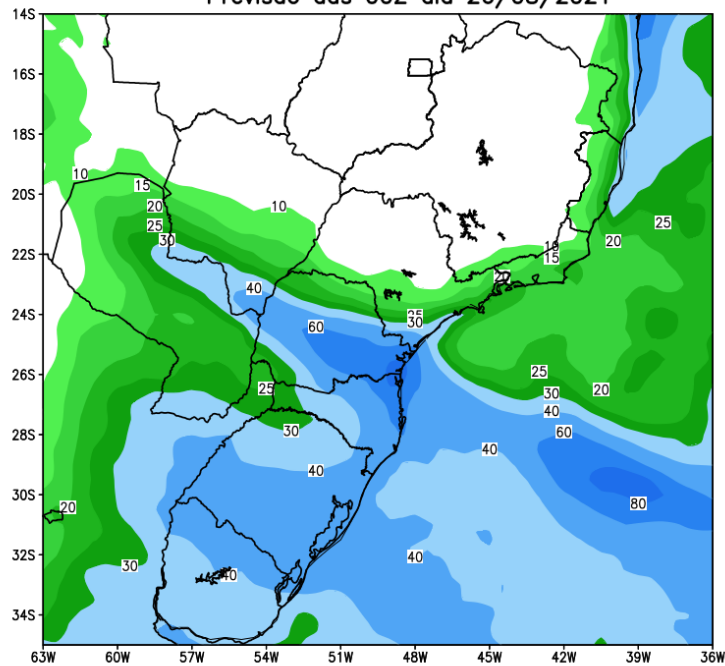
Anomalia de Precipitacao BR\_SUL (mm)  
Periodo: 2021090300 a 2021090900



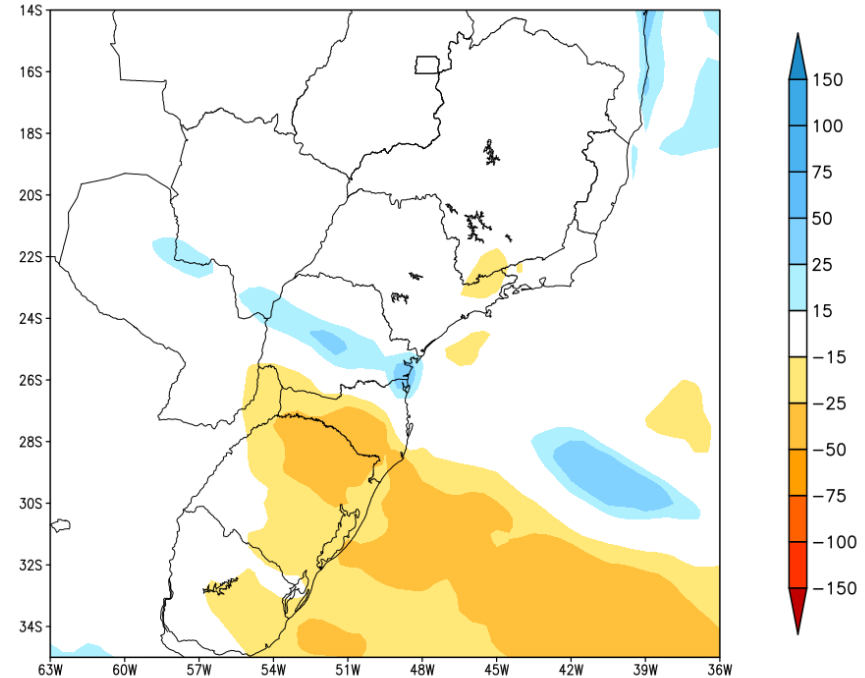
MODELO GFS

# Tendência para as duas próximas semanas

GEFS / BRASIL\_SUL  
Precipitacao acumulada 14dias (mm)  
Previsao das 00Z dia 26/08/2021



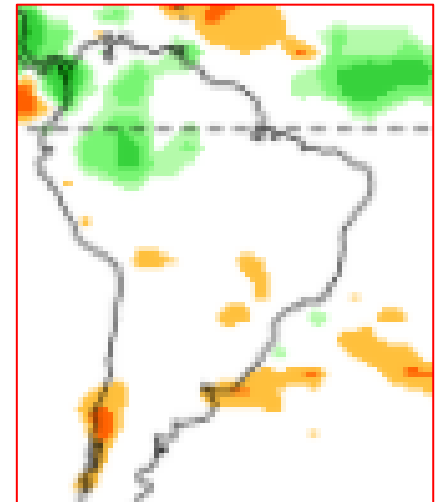
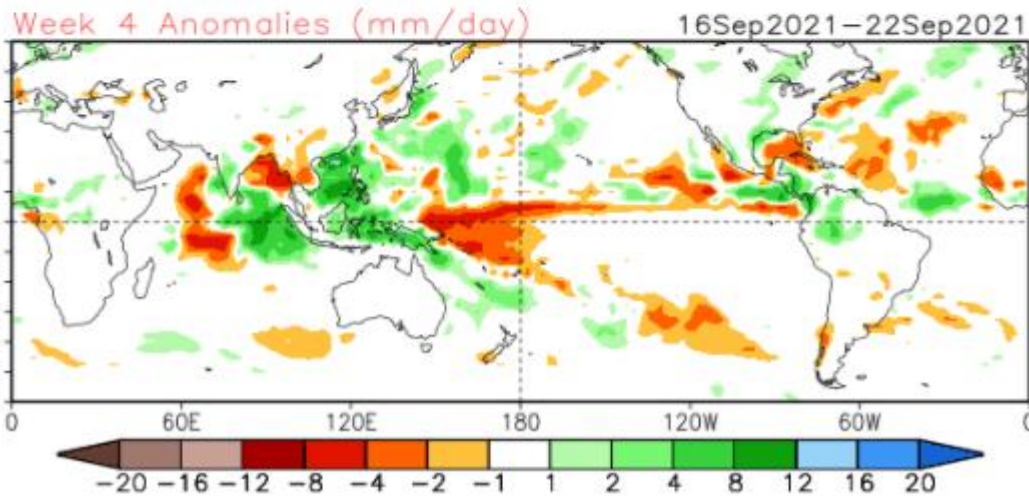
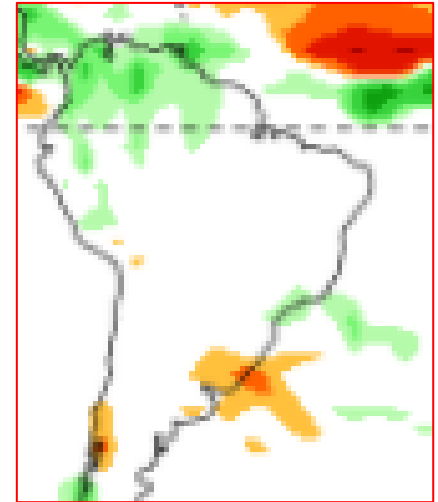
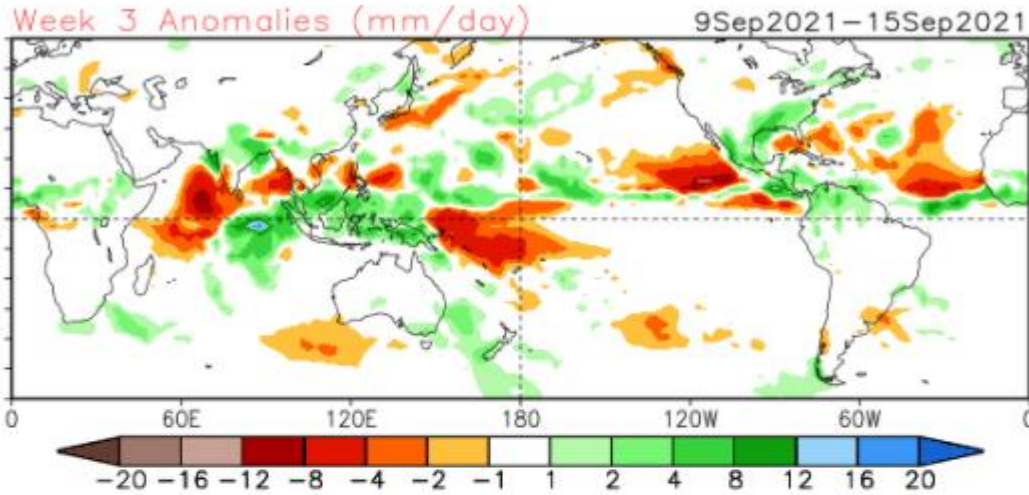
Anomalia de Precipitacao BR SUL (mm)  
Periodo: 2021082600 a 2021090900



MODELO GFS

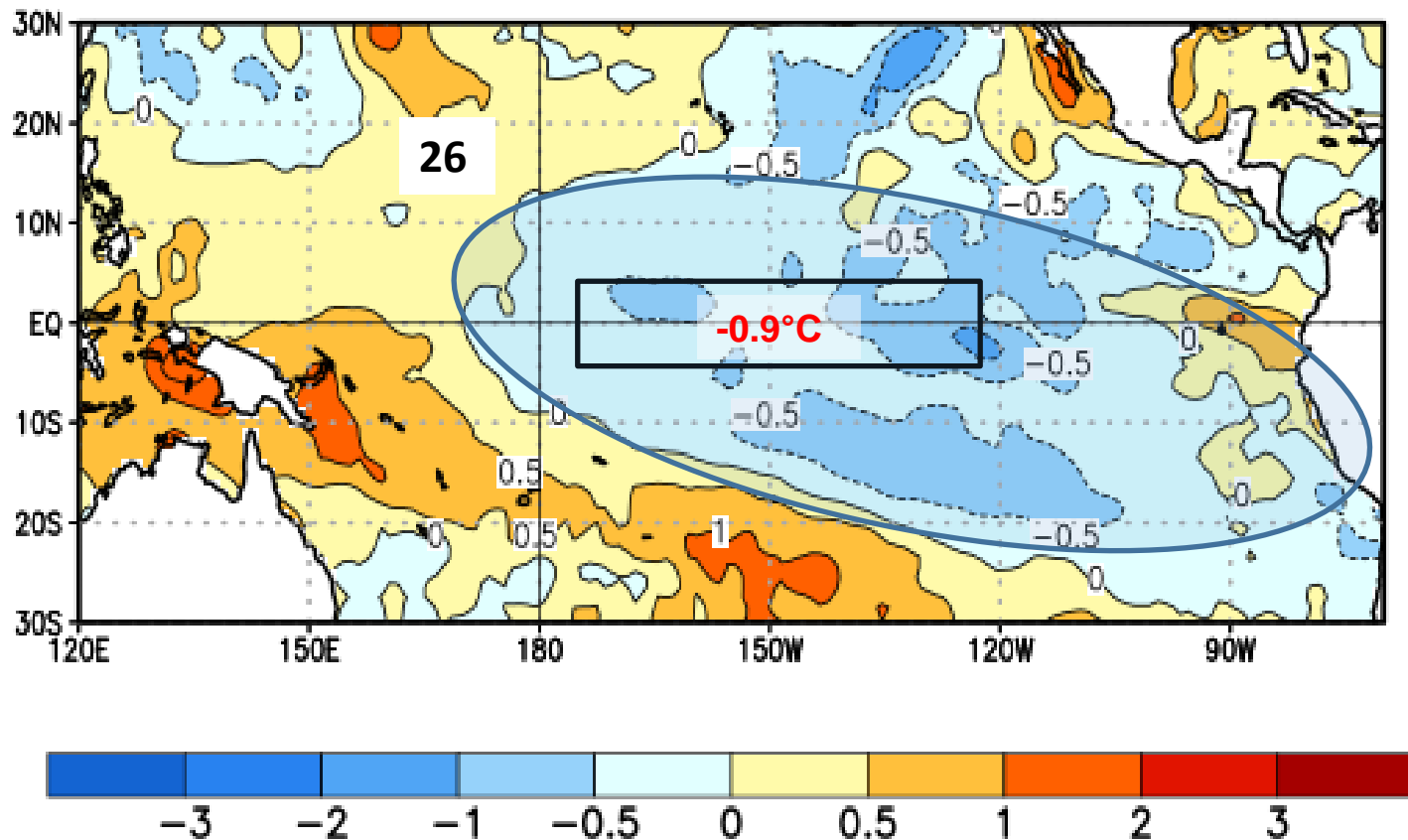
# Tendência 3a e 4a semanas

16 Member Ensemble Mean Forecast from 25Aug2021

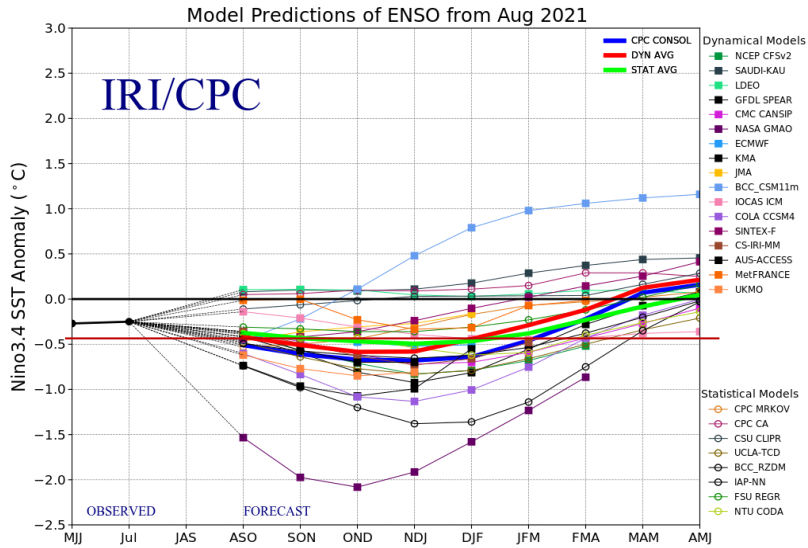


# SST Departures (°C) in the Tropical Pacific During the Last Four Weeks

Average SST Anomalies  
25 JUL 2021 – 21 AUG 2021

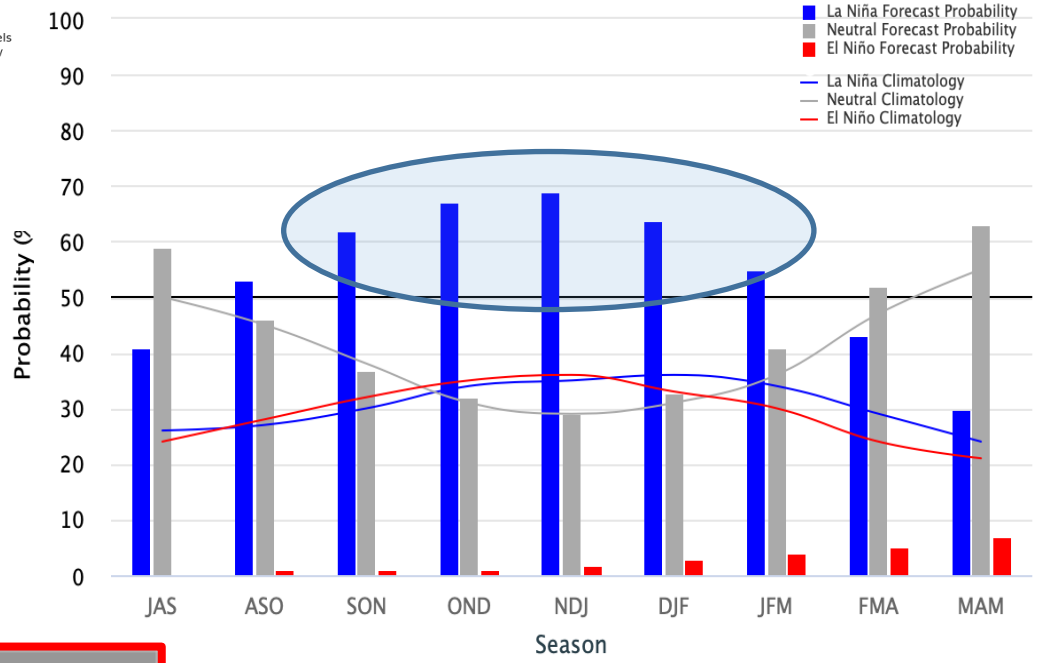


# Previsão do “La Niña”



Early-August 2021 CPC/IRI Official Probabilistic ENSO Forecasts

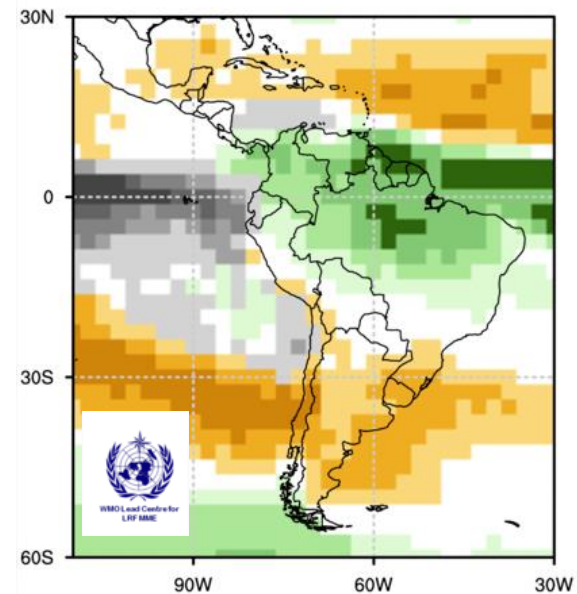
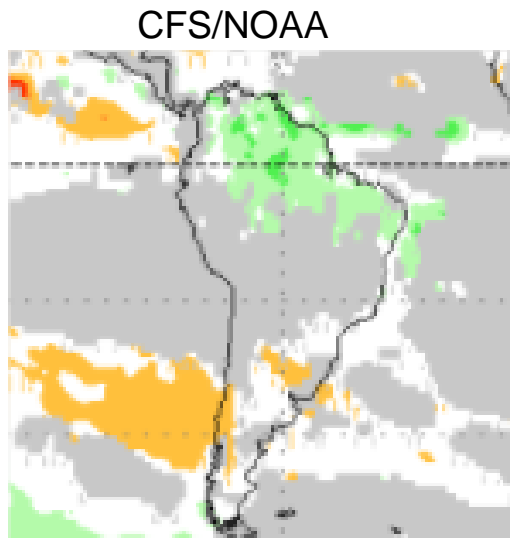
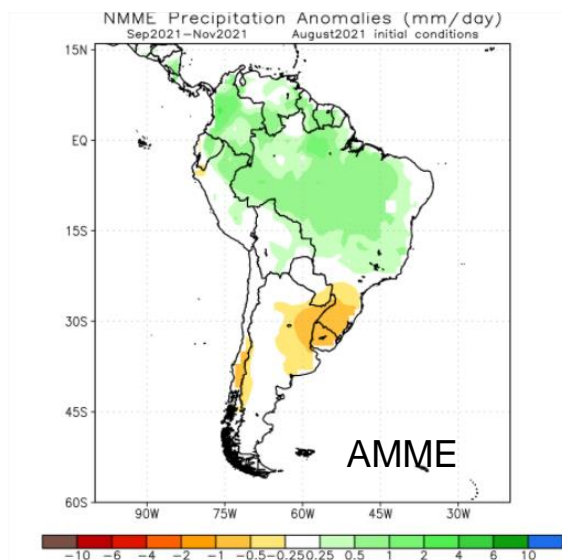
ENSO state based on NINO3.4 SST Anomaly  
Neutral ENSO: -0.5 °C to 0.5 °C



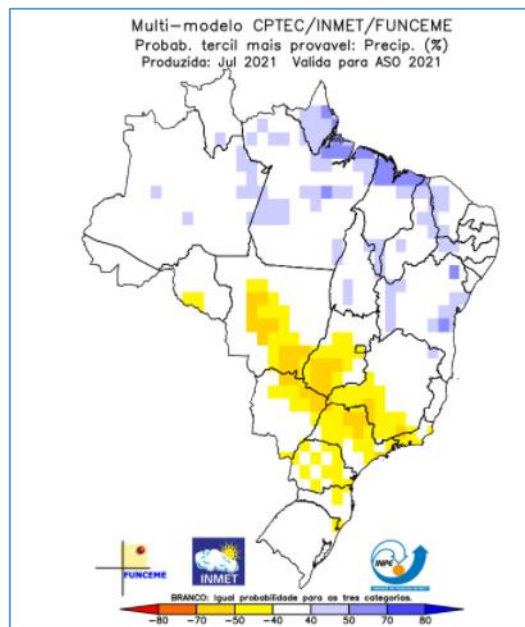
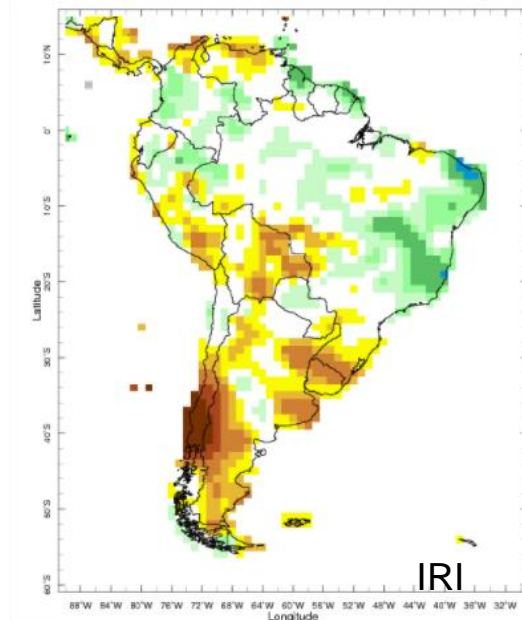
**ENSO Alert System Status: La Niña Watch**



# Previsão Sazonal de chuva (SON)



Sep-Nov 2021 IRI Seasonal Precipitation Forecast issued Aug 2021



ECMWF Seasonal Forecast System  
Prob(most likely category of precipitation)  
Forecast start is 01/08/21, climate period is 1993-2016  
Ensemble size = 51, climate size = 600

