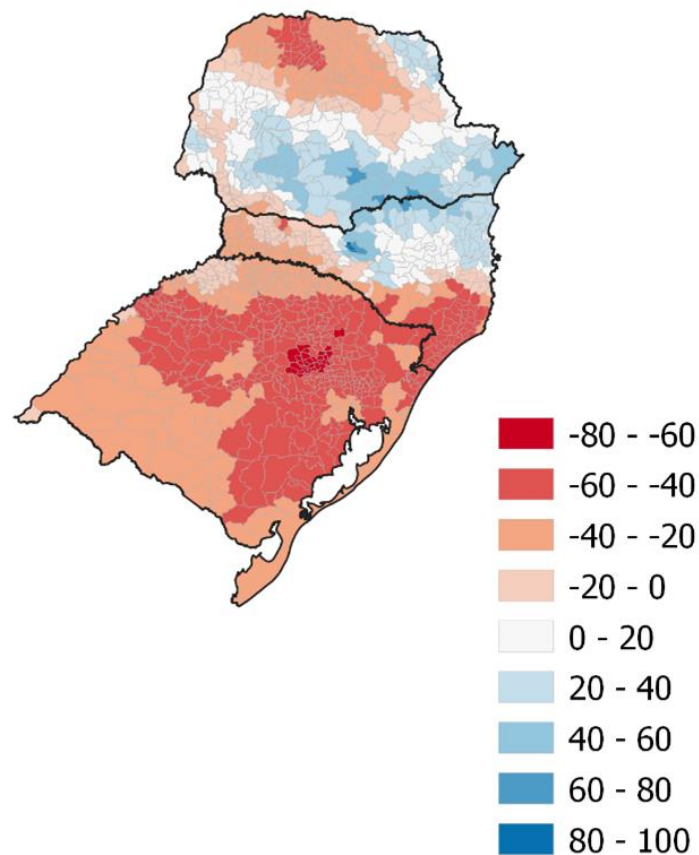
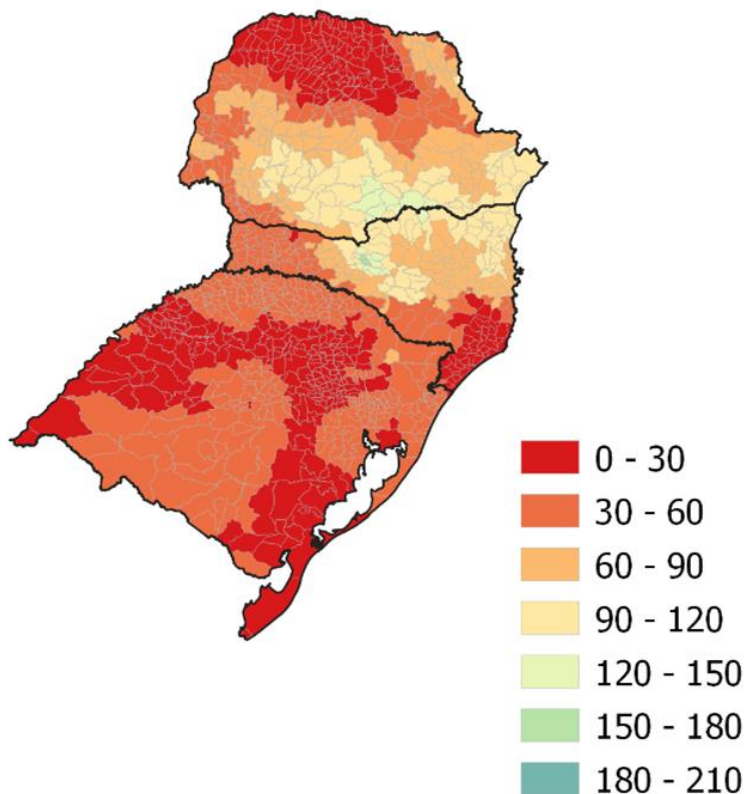


# Monitoramento da situação da seca na Região Sul

# Precipitação – Região Sul: **Setembro/2022** (até dia 13/09)

Chuva acumulada (mm)

Anomalia em mm

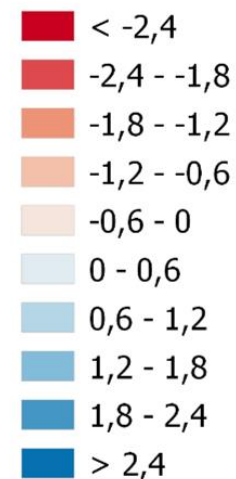
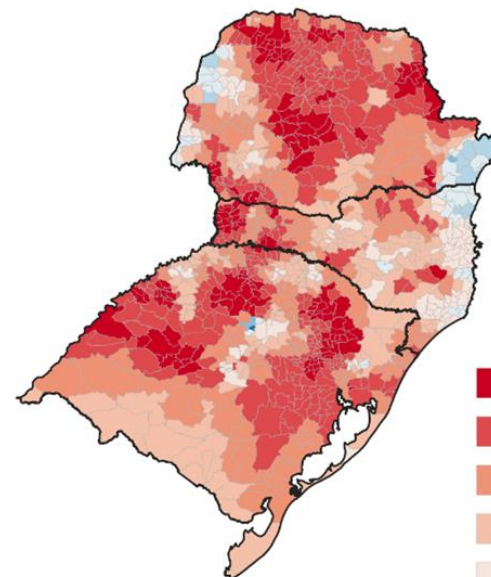
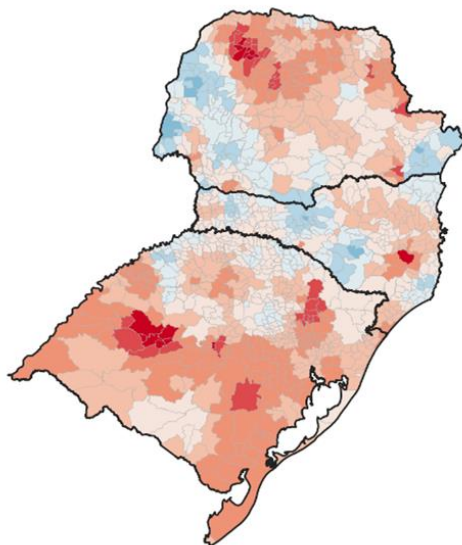
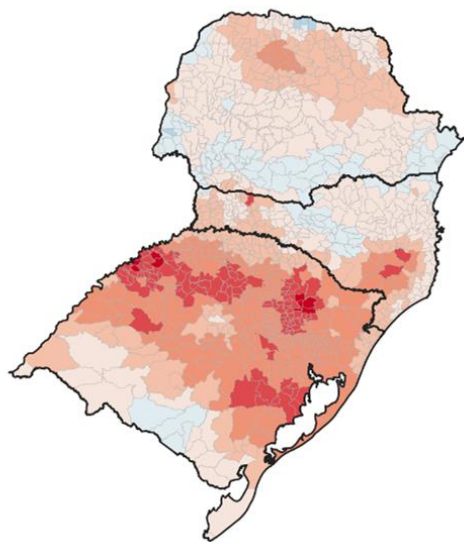


## SPI: Setembro de 2022

SPI03

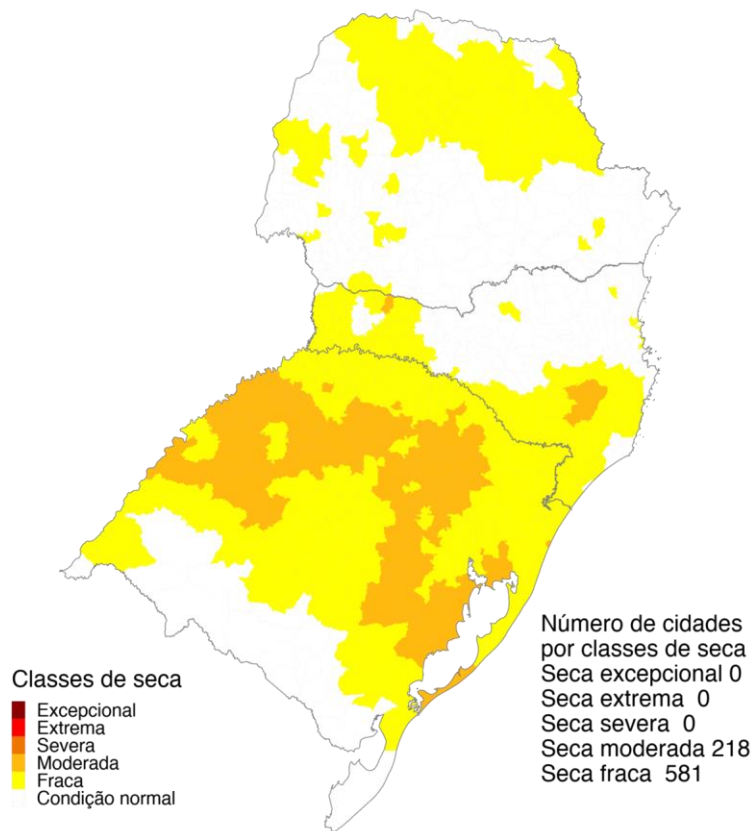
SPI12

SPI24



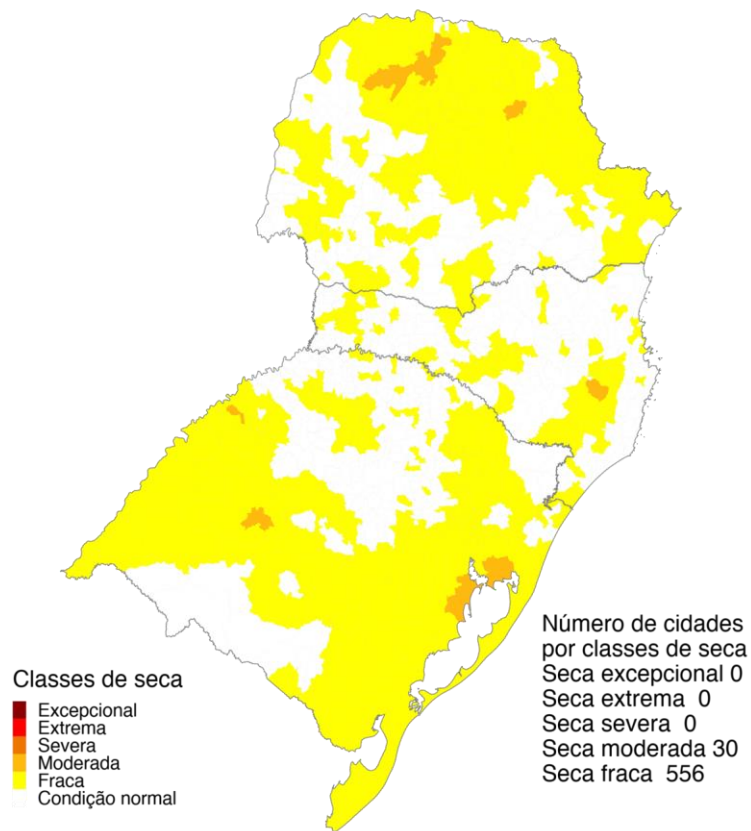
# Índice Integrado de Seca – IIS nas escalas de 3 e 6 meses

## IIS3



Agosto 2022  
Índice Integrado de Seca (SPI3, VHI, US)  
Dados: CPTEC/INPE - NOAA - NASA / Preparação: Cemaden/MCTI

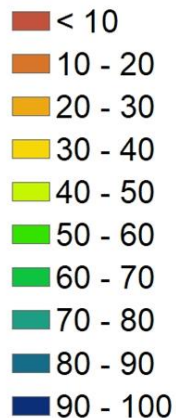
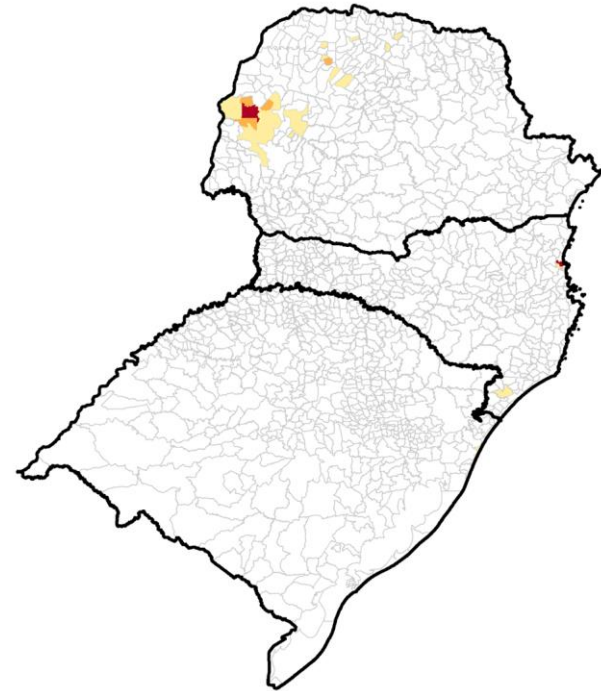
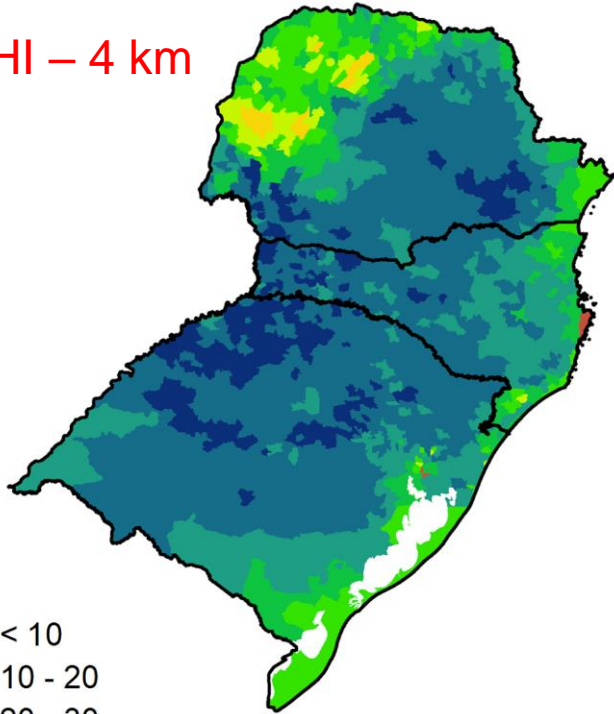
## IIS6



Agosto 2022  
Índice Integrado de Seca (SPI6, VHI, US)  
Dados: CPTEC/INPE - NOAA - NASA / Preparação: Cemaden/MCTI

# Áreas Agroprodutivas afetadas pela seca – Região Sul: 16/09

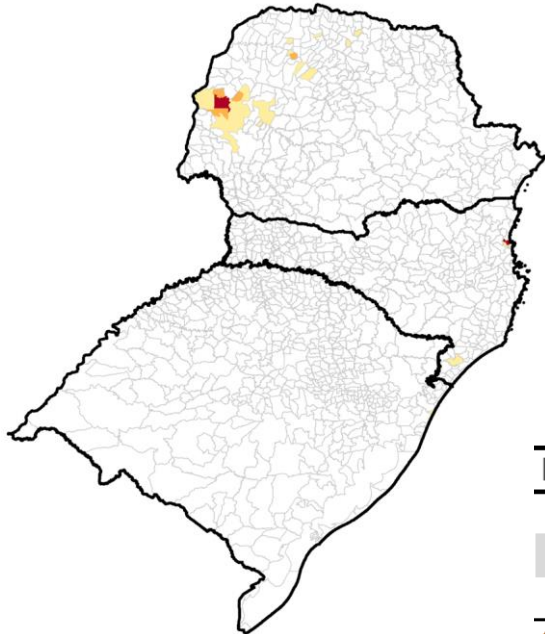
VHI – 4 km



UF	40 a 60%		60 - 80%		> 80%	
	19/ago	16/set	19/ago	16/set	19/ago	16/set
Paraná	11	20		5		1
Santa Catarina		3				1
Rio Grande do Sul		2				

\*Estimativa a partir dos dados do Cadastro Ambiental Rural para minifúndios, pequenas e médias propriedades e VHI (Satélite)

# Áreas Agroprodutivas afetadas pela seca – Região Sul: 16/09



	40 a 60%	60 - 80%	> 80%	Imóveis Rurais Impactados > 40%
<b>Paraná</b>				
Minifundio	14518(2%)	3868 (1%)	1279 (*)	19665 (8%)
Pequena Propriedade	7701 (3%)	1456 (1%)	897 (1%)	10054 (8%)
Media Propriedade	1142 (3%)	133 (*)	113 (*)	1388 (5%)
<b>Santa Catarina</b>				
Minifundio	3651(2%)	-	166 (*)	3817 (2%)
Pequena Propriedade	620 (1%)	-	102 (*)	722(1%)
Media Propriedade	23 (*)	-	14 (*)	37 (*)
<b>Rio Grande do Sul</b>				
Minifundio	7 (*)	-	-	7 (*)
Pequena Propriedade	7 (*)	-	-	7 (*)
Media Propriedade	10 (*)	-	-	10 (*)

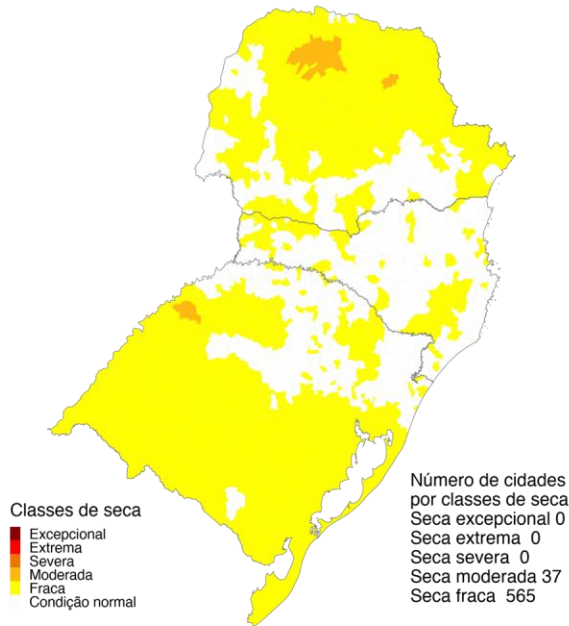
(\*) Porcentagem inferior a 1%.

\*Estimativa a partir dos dados do Cadastro Ambiental Rural para minifúndios, pequenas e médias propriedades e VHI (Satélite)

# Cenários IIS: Região Sul: **Setembro/22**

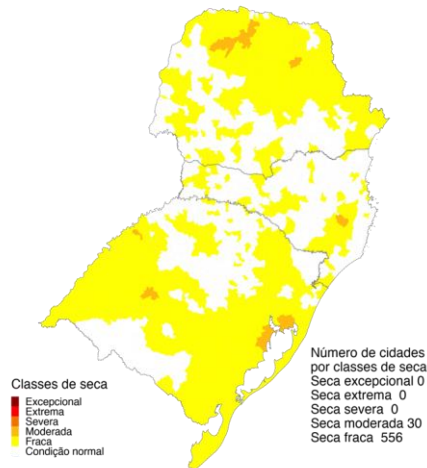
Chuva 30% **ACIMA** da média

Chuva 30% **ABAIXO** da média

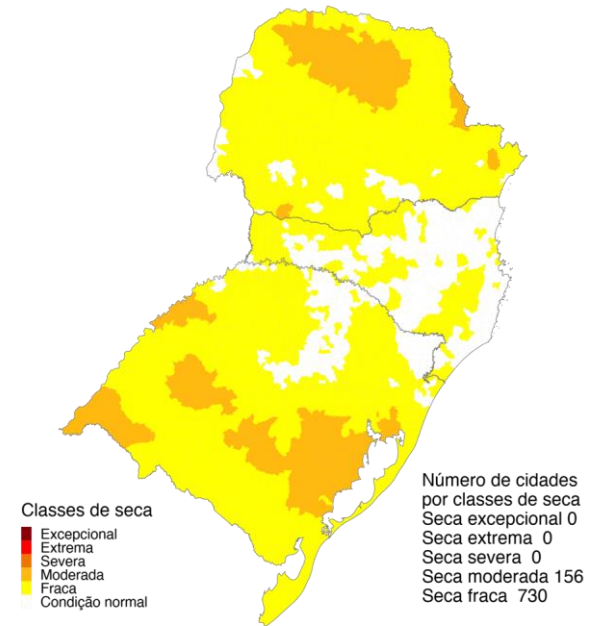


Agosto 2022  
Índice Integrado de Seca (SPI6, VHI, US)  
Cenário: Chuva + 30%  
Dados: CPTEC/INPE - NOAA - NASA / Preparação: Cemaden/MCTI

**IIS6 observado (20 de setembro)**

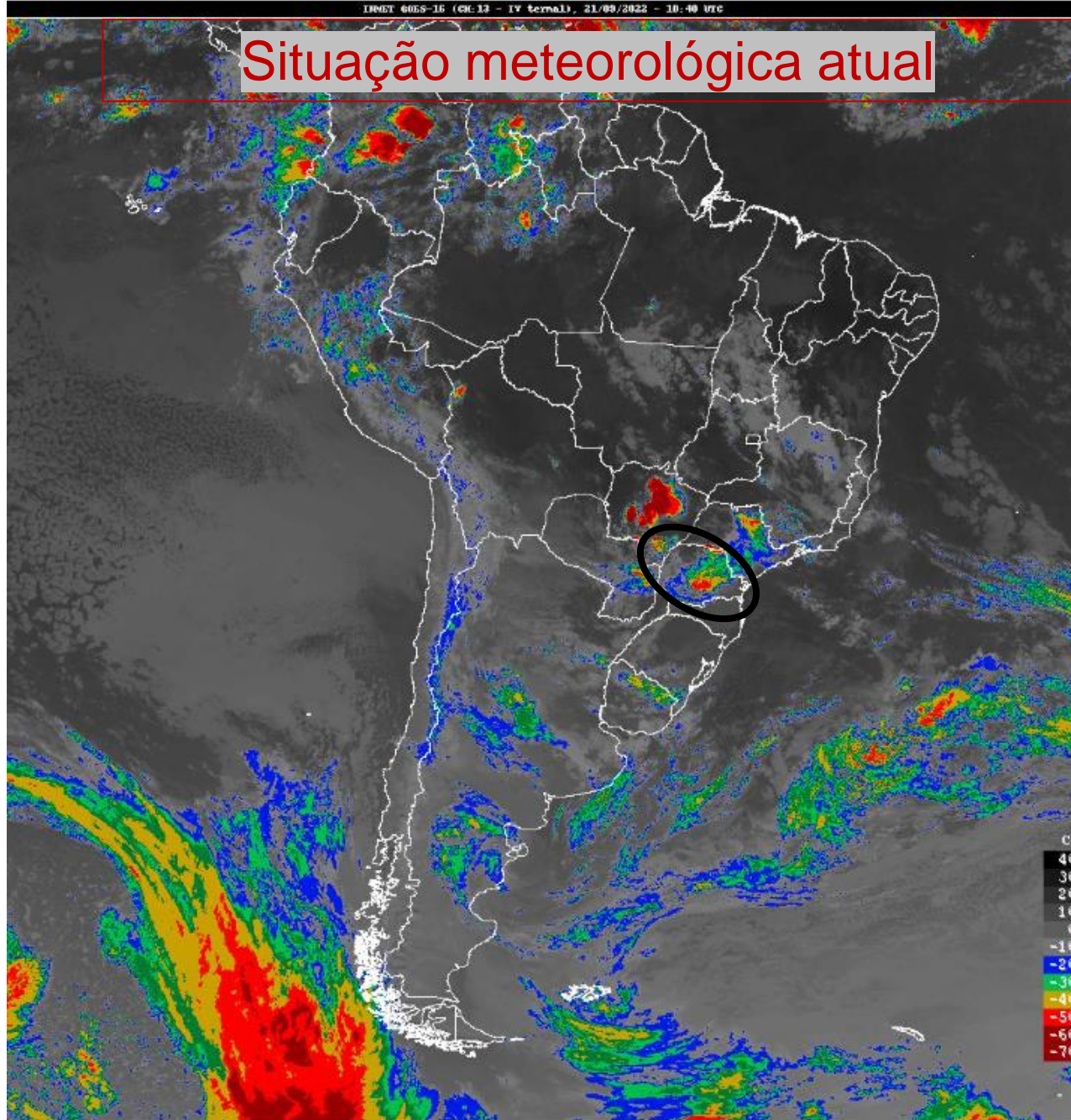


Agosto 2022  
Índice Integrado de Seca (SPI6, VHI, US)  
Dados: CPTEC/INPE - NOAA - NASA / Preparação: Cemaden/MCTI



Agosto 2022  
Índice Integrado de Seca (SPI6, VHI, AUS)  
Cenário: Chuva - 30%  
Dados: CPTEC/INPE - NOAA - NASA / Preparação: Cemaden/MCTI

# Situação meteorológica atual

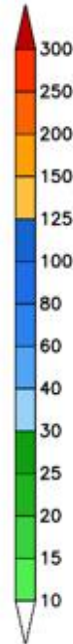
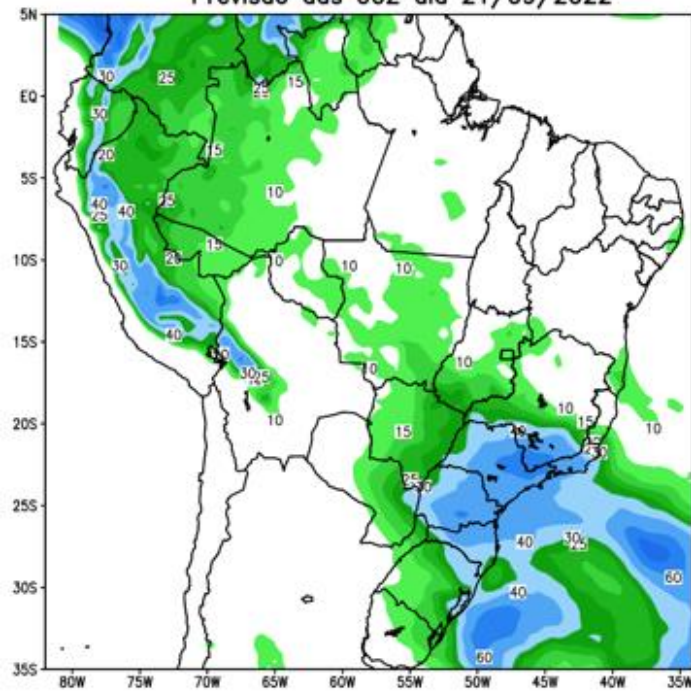


Fonte: INMET

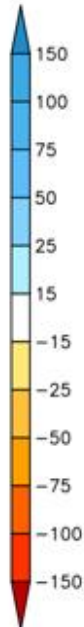
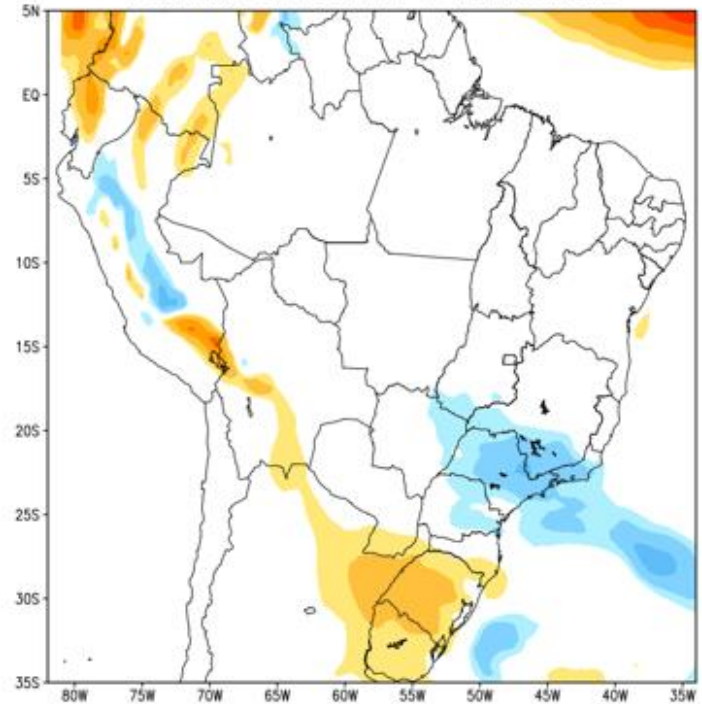


# Previsão de chuva próximos 7 dias

GEFS / BRASIL  
Precipitação acumulada 1aSem (mm)  
Previsão das 00Z dia 21/09/2022

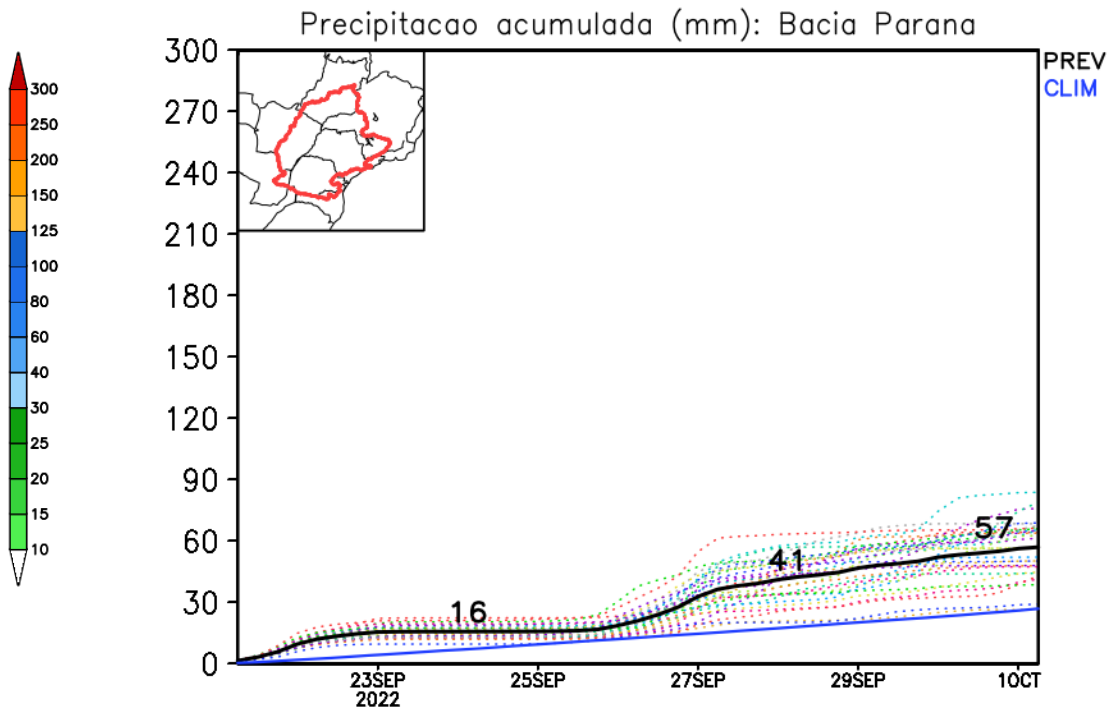
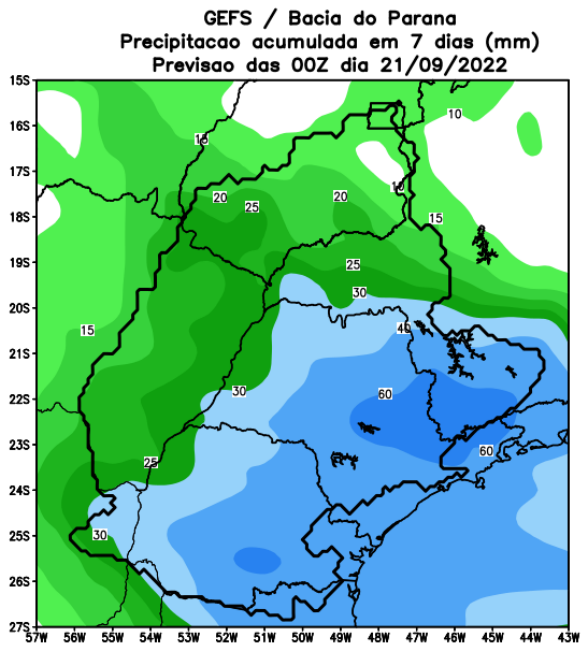


Anomalia de Precipitação BR (mm)  
Período: 2022092100 a 2022092800



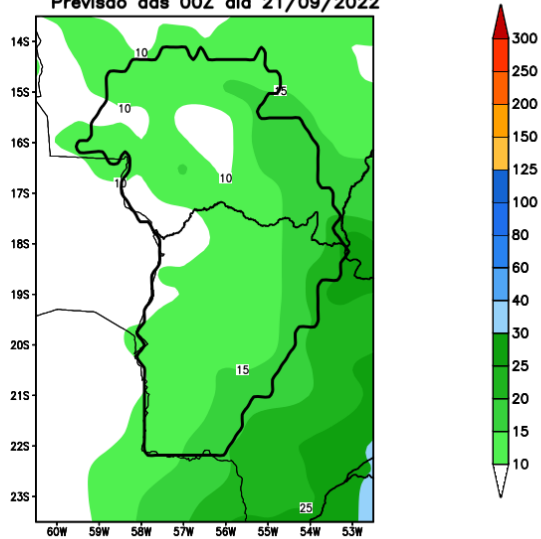
MODELO GEFS

# Previsão para as principais bacias

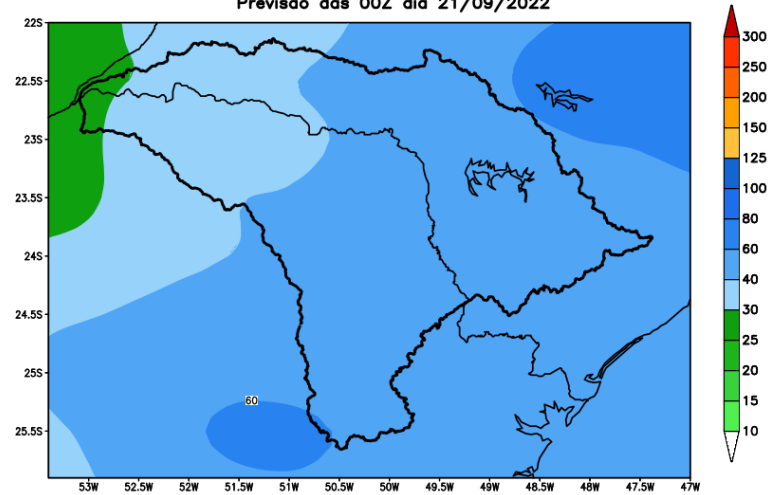


# Previsão para as principais bacias

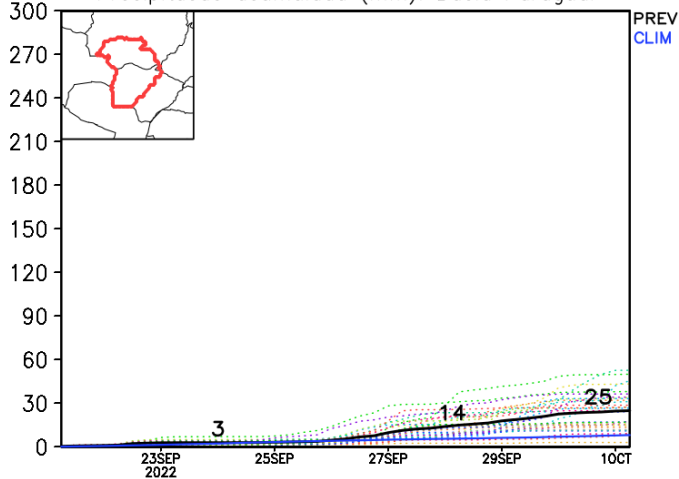
GEFS / Bacia do Rio Paraguai  
 Precipitação acumulada em 7 dias (mm)  
 Previsão das 00Z dia 21/09/2022



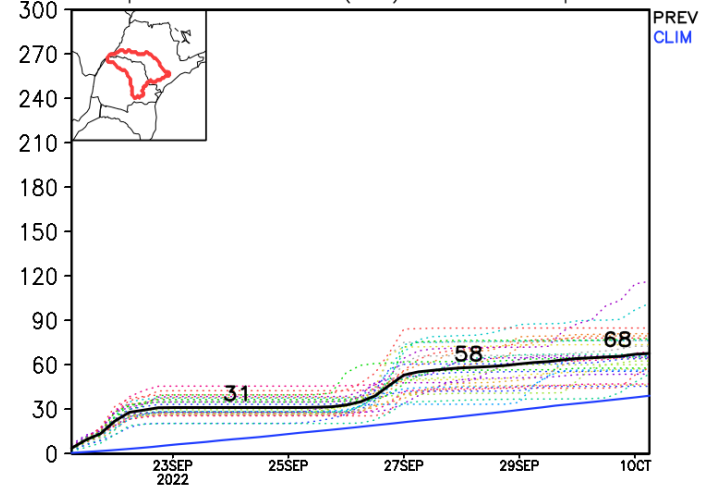
GEFS / Bacia do Rio Paranapanema  
 Precipitação acumulada em 7 dias (mm)  
 Previsão das 00Z dia 21/09/2022



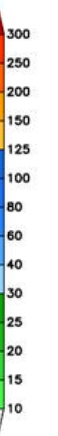
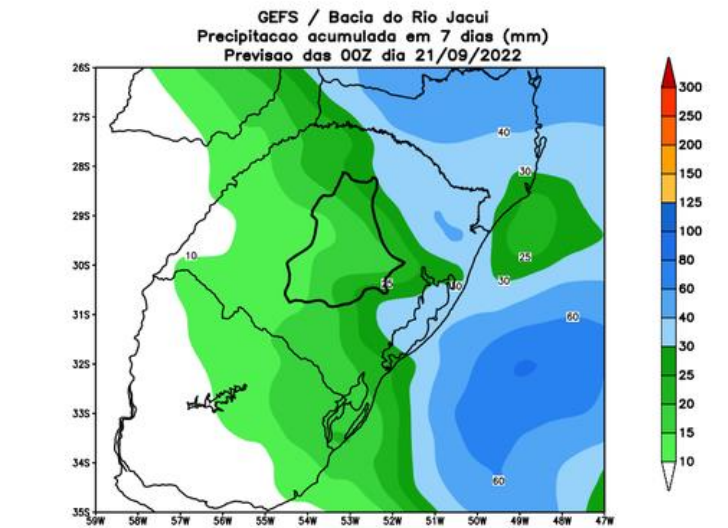
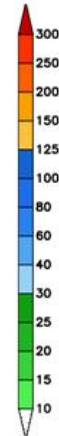
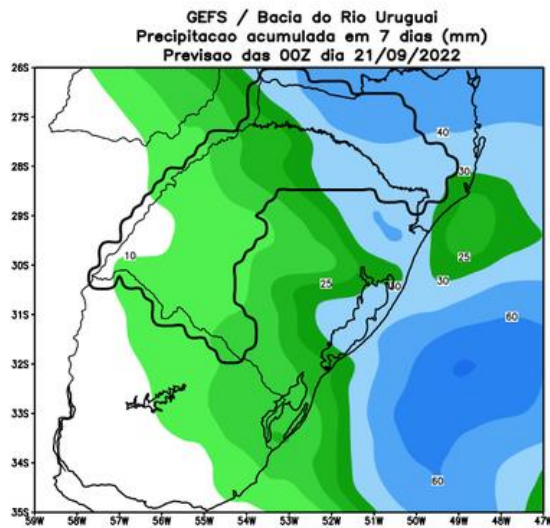
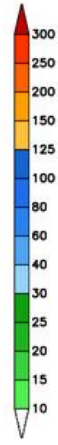
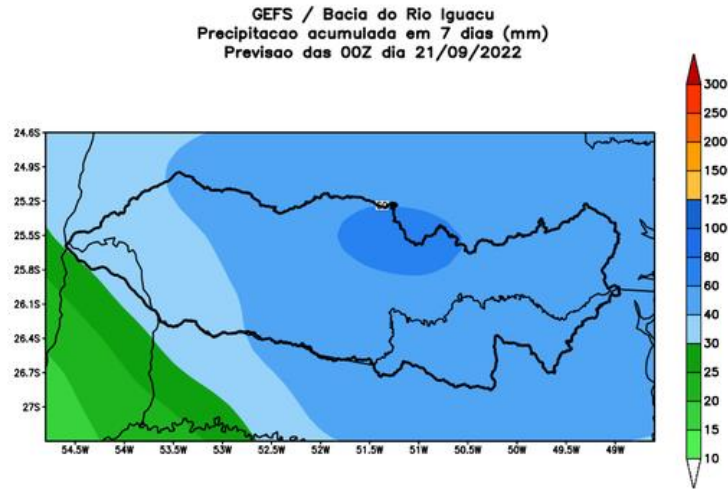
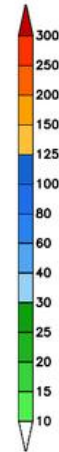
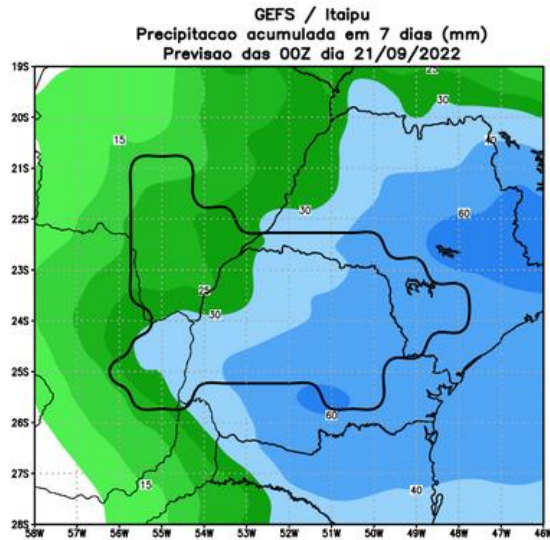
Precipitação acumulada (mm): Bacia Paraguai



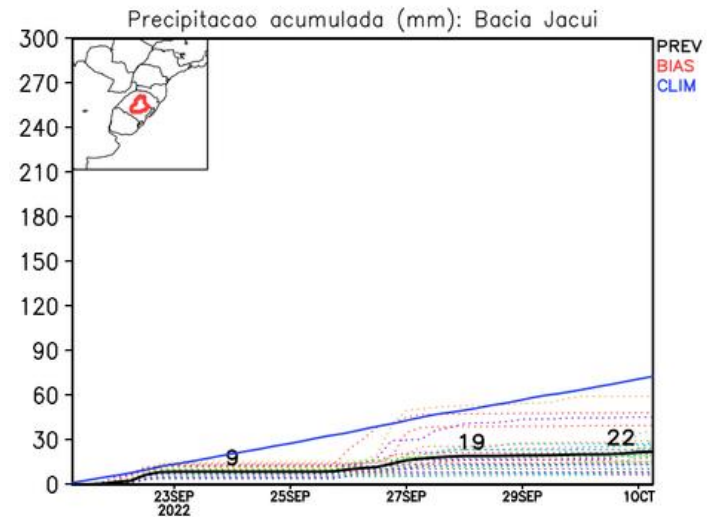
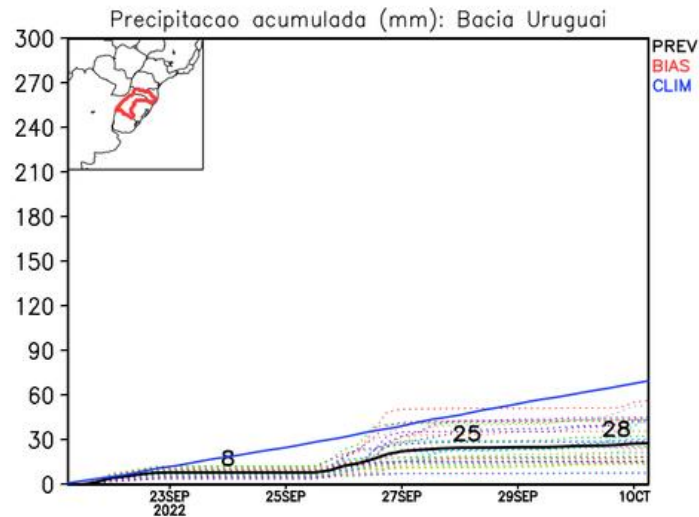
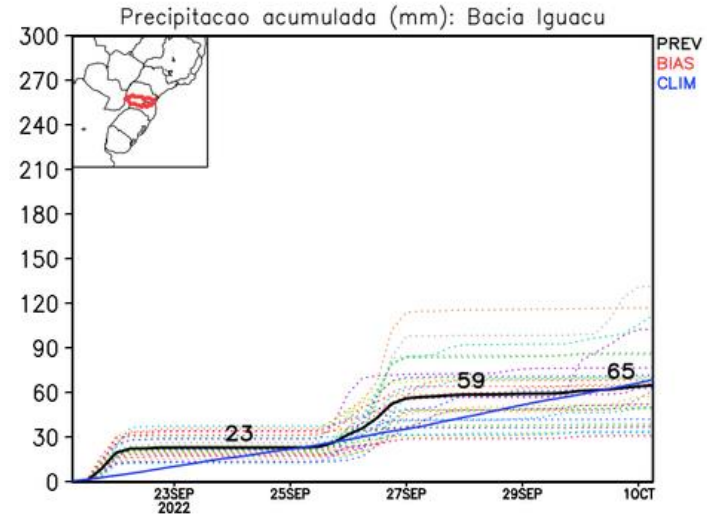
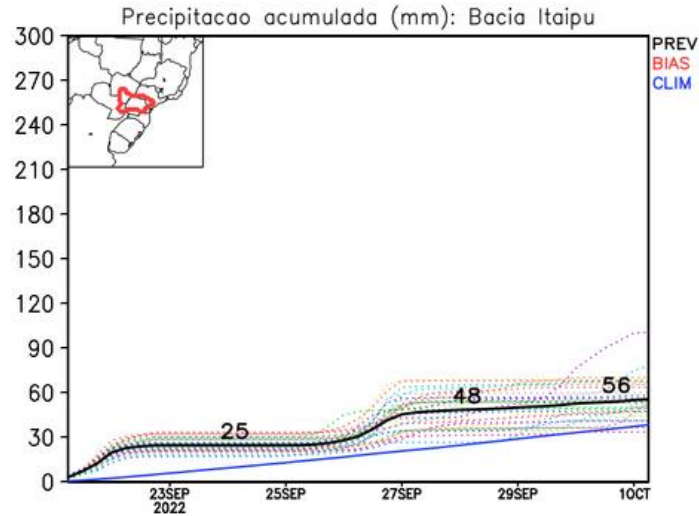
Precipitação acumulada (mm): Bacia Paranapanema



# Previsão para as principais bacias

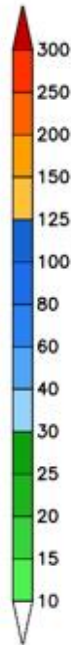
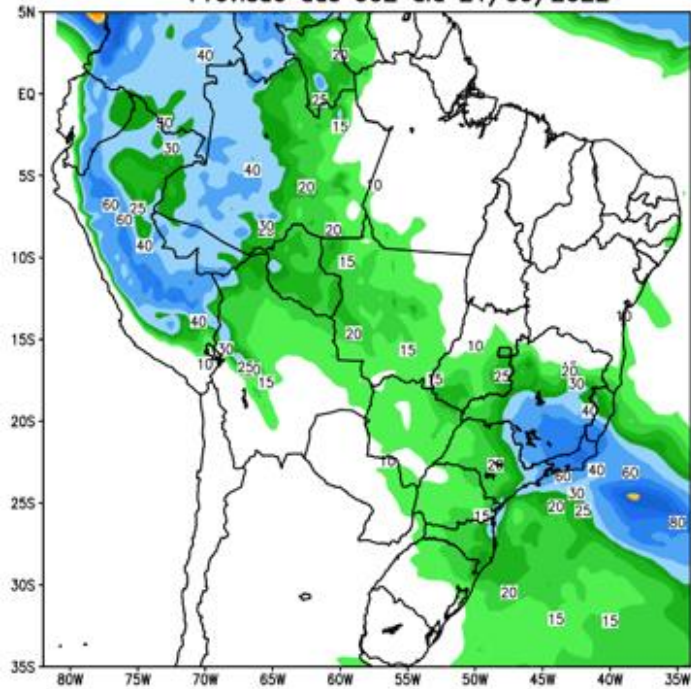


# Previsão para as principais bacias

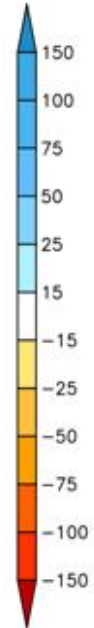
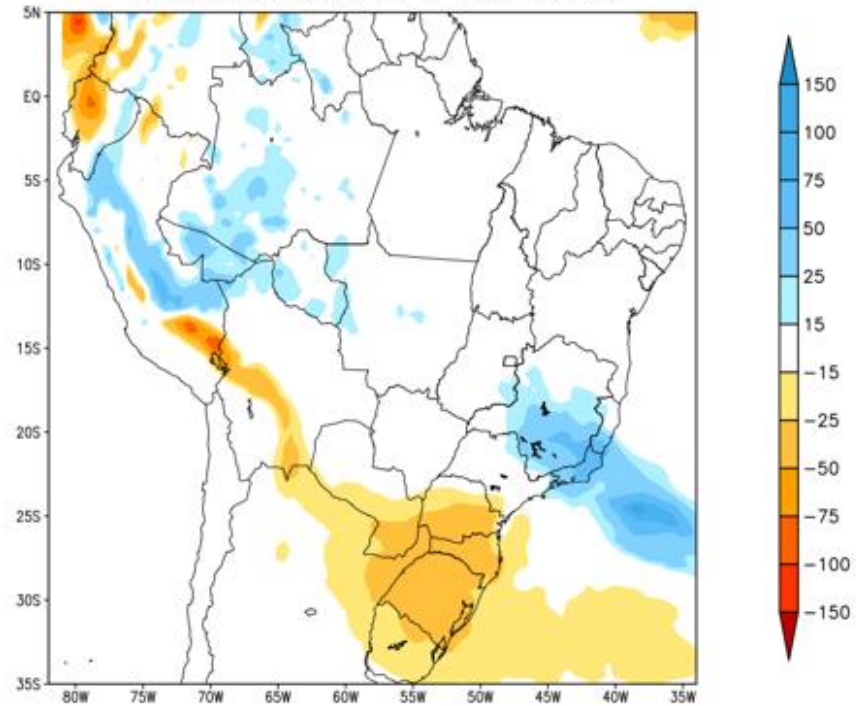


# Tendência para a segunda semana

GEFS / BRASIL  
Precipitação acumulada 2aSem (mm)  
Previsão das 00Z dia 21/09/2022



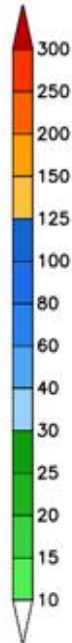
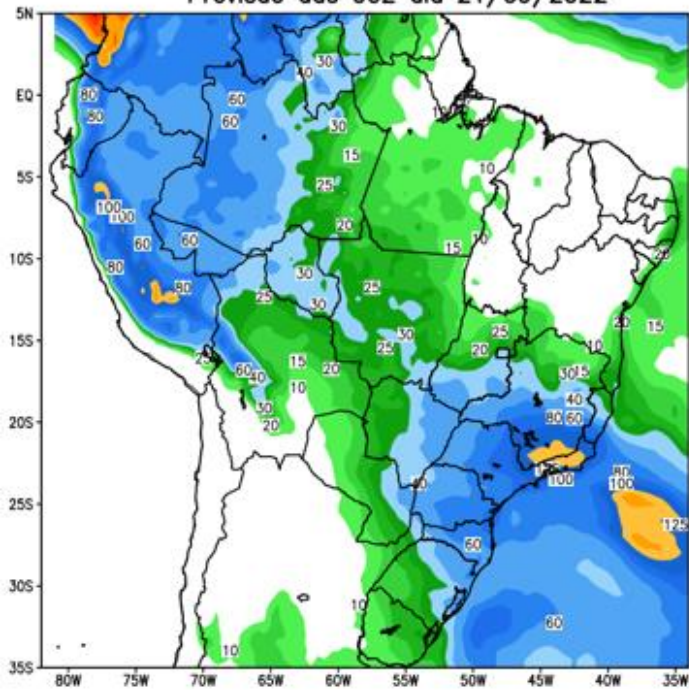
Anomalia de Precipitação BR (mm)  
Período: 2022092900 a 2022100500



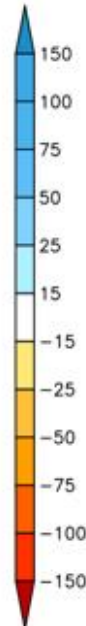
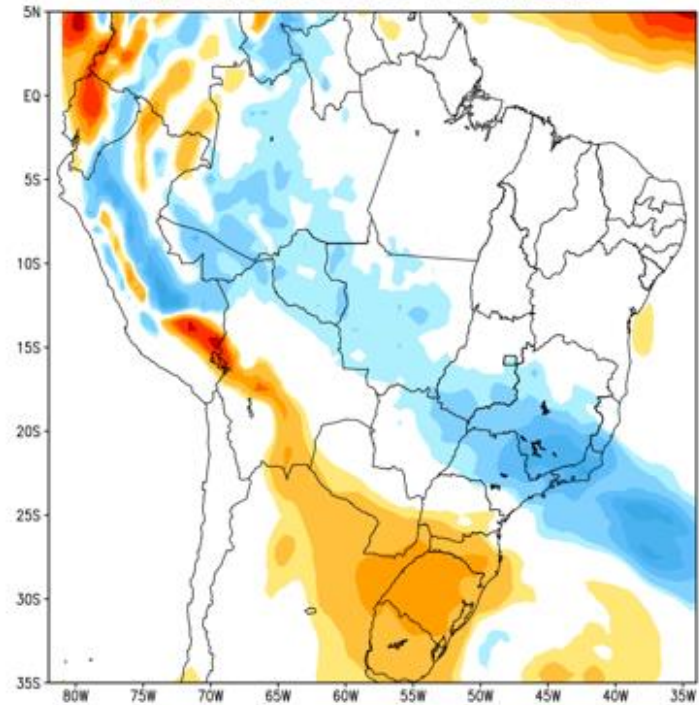
MODELO GEFS

# Tendência para as duas próximas semanas

GEFS / BRASIL  
Precipitação acumulada 14 dias (mm)  
Previsão das 00Z dia 21/09/2022

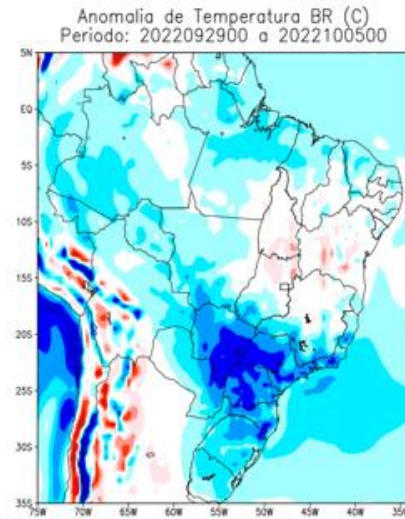
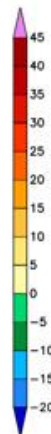
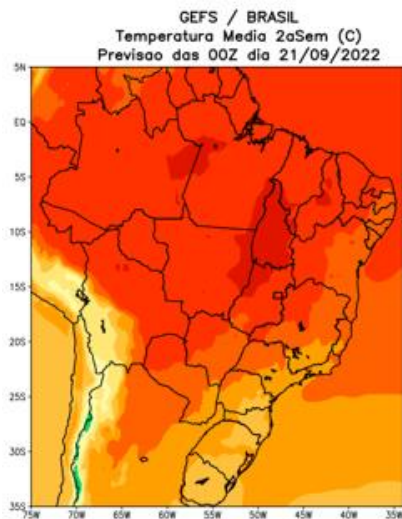
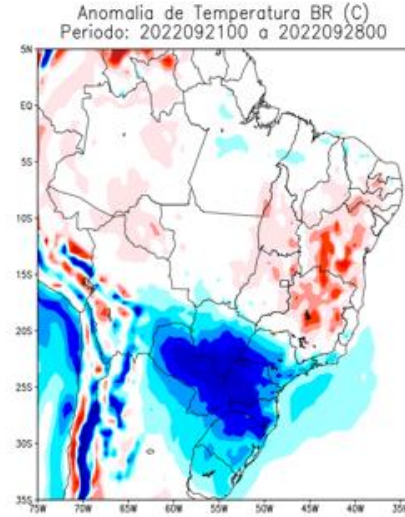
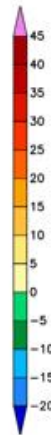
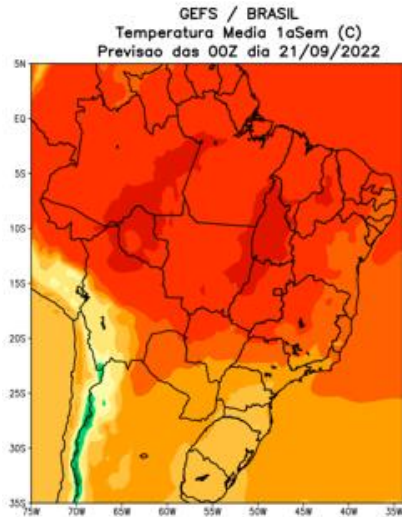


Anomalia de Precipitação BR (mm)  
Período: 2022092100 a 2022100500



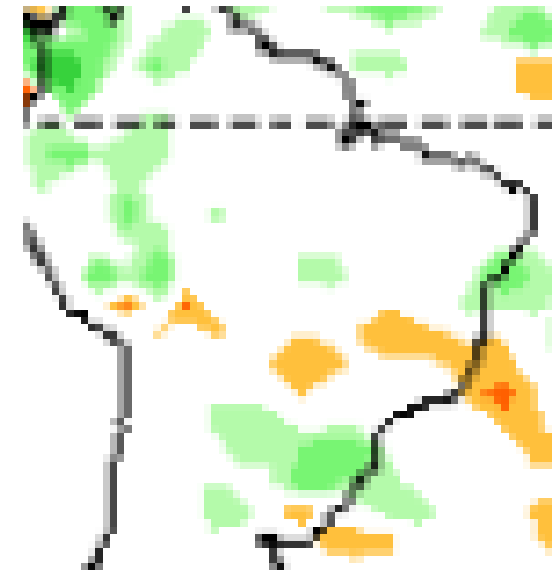
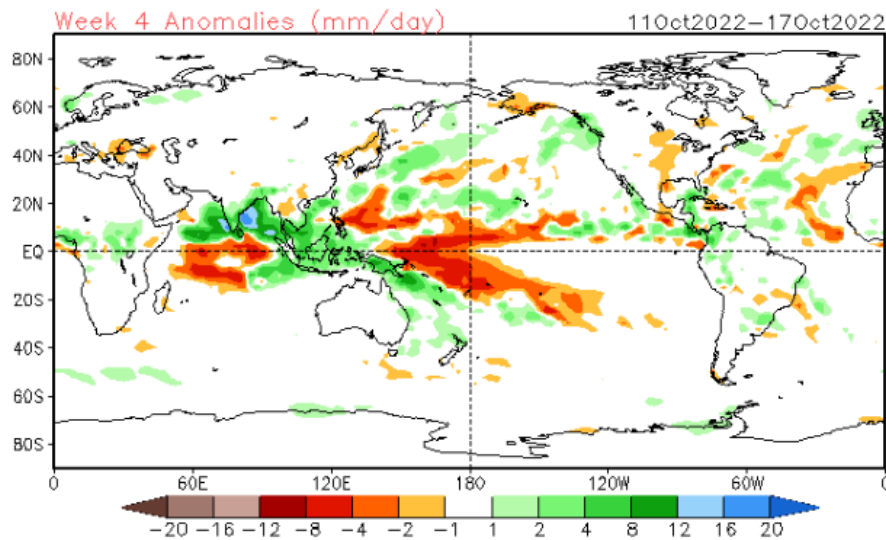
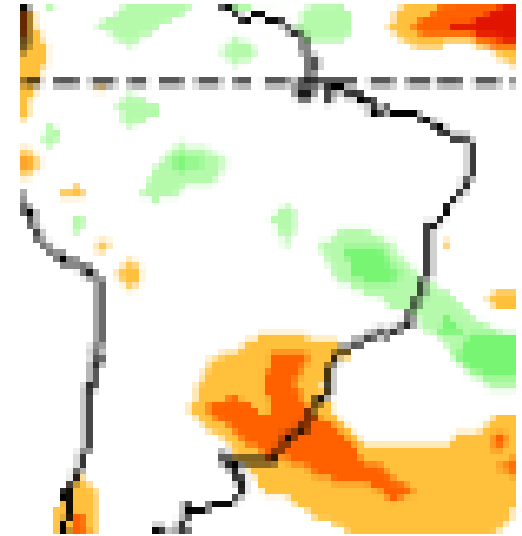
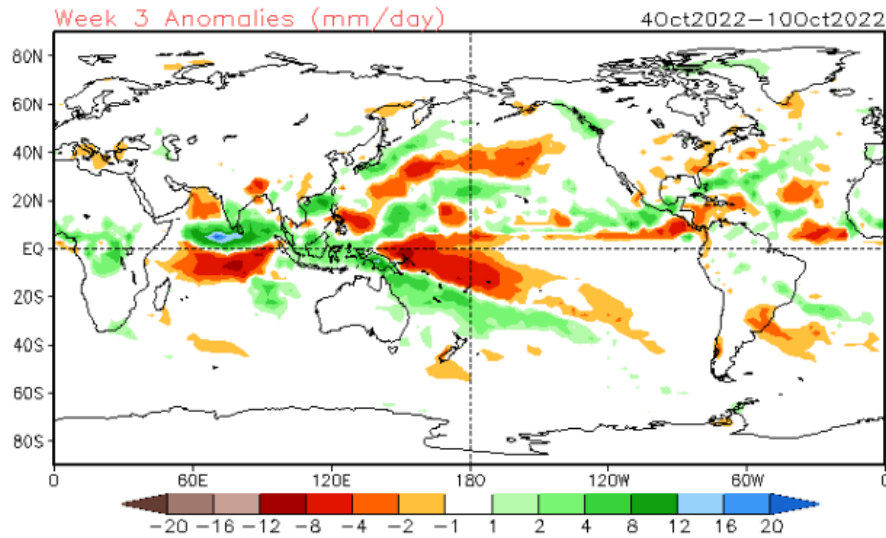
MODELO GFS

# Previsão de Temperatura



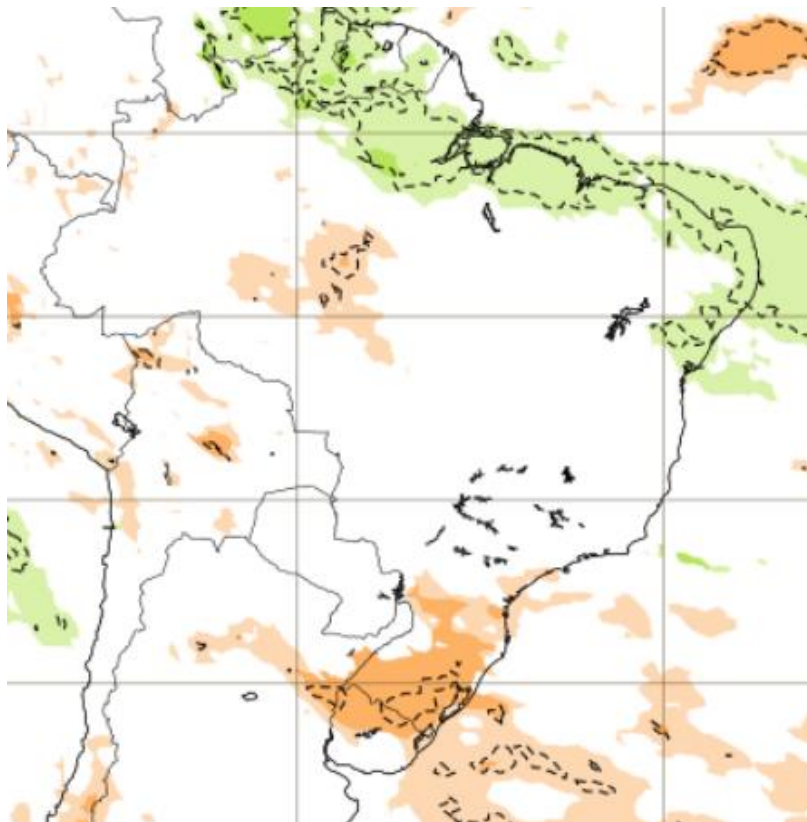


# Tendência 3a e 4a semanas

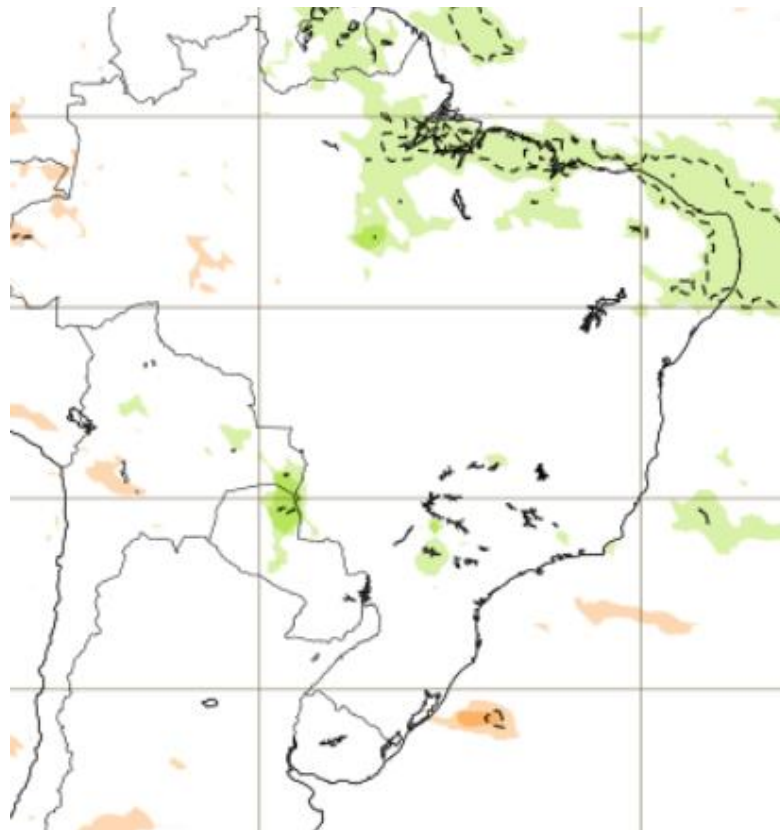


# Tendência para 3ª e 4ª semanas

03-09/10

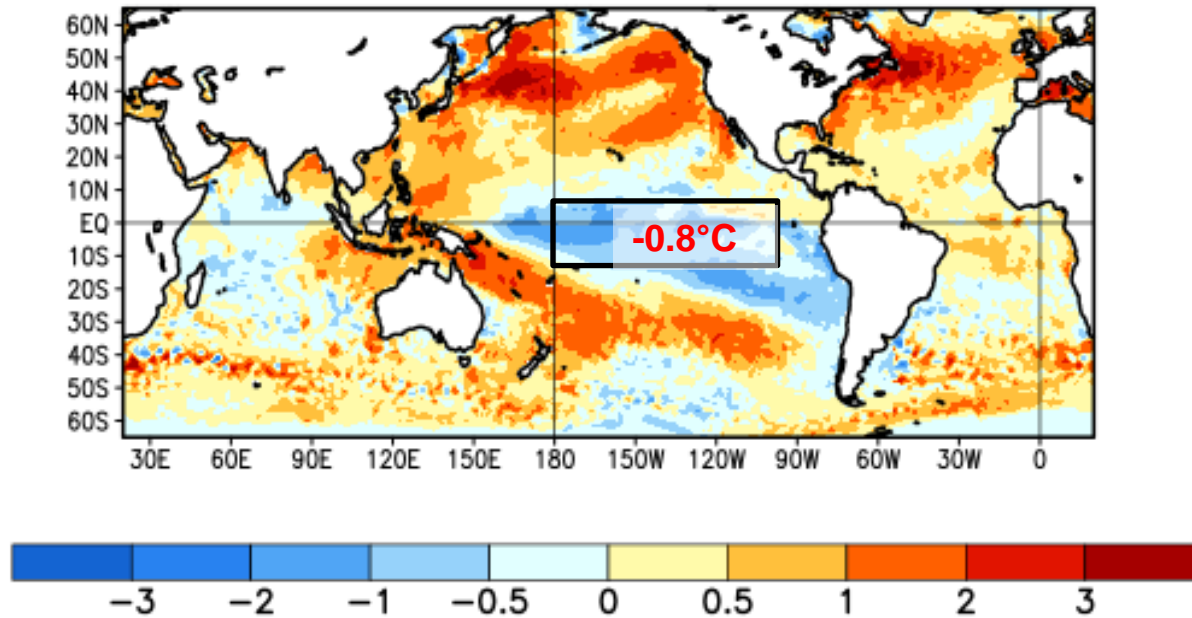


10-17/10



## Status Atual: **La Niña**

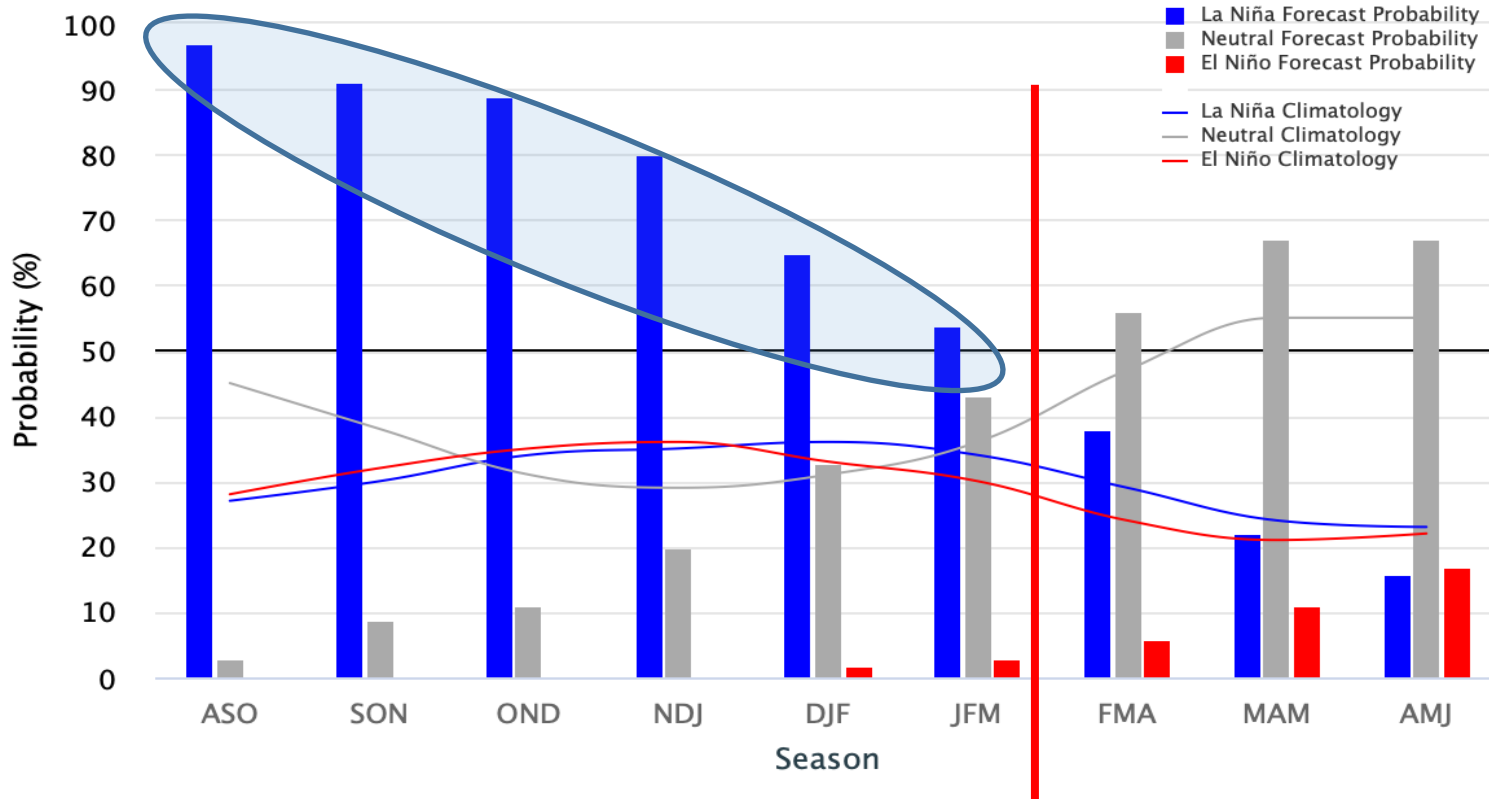
Average SST Anomalies  
21 AUG 2022 – 17 SEP 2022



# Previsão do “La Niña”

## Early–September 2022 CPC Official Probabilistic ENSO Forecasts

ENSO state based on NINO3.4 SST Anomaly  
Neutral ENSO:  $-0.5\text{ }^{\circ}\text{C}$  to  $0.5\text{ }^{\circ}\text{C}$



Status Atual: **La Niña**

# Previsão sazonal de Chuva OND

