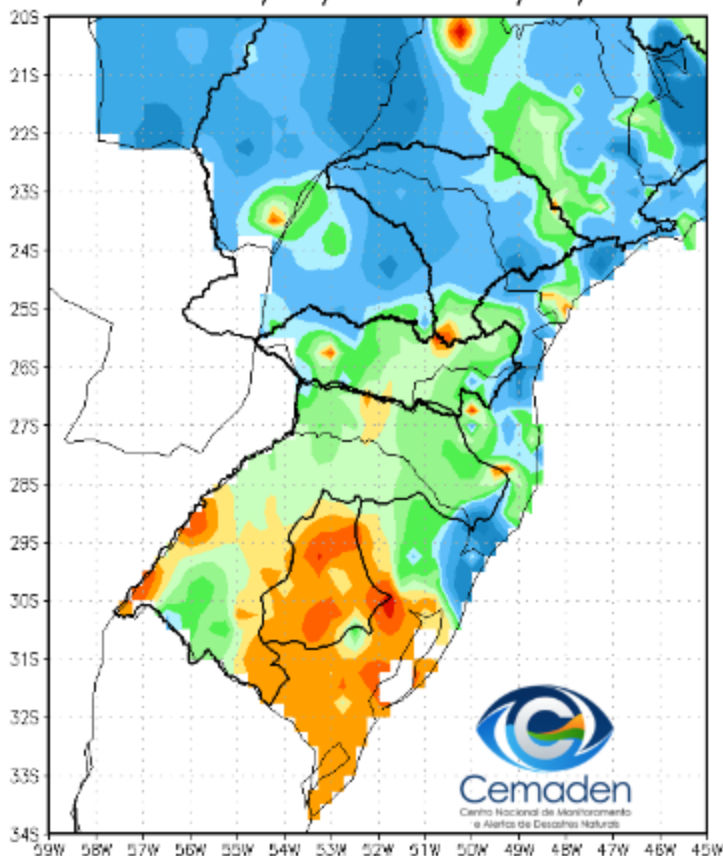


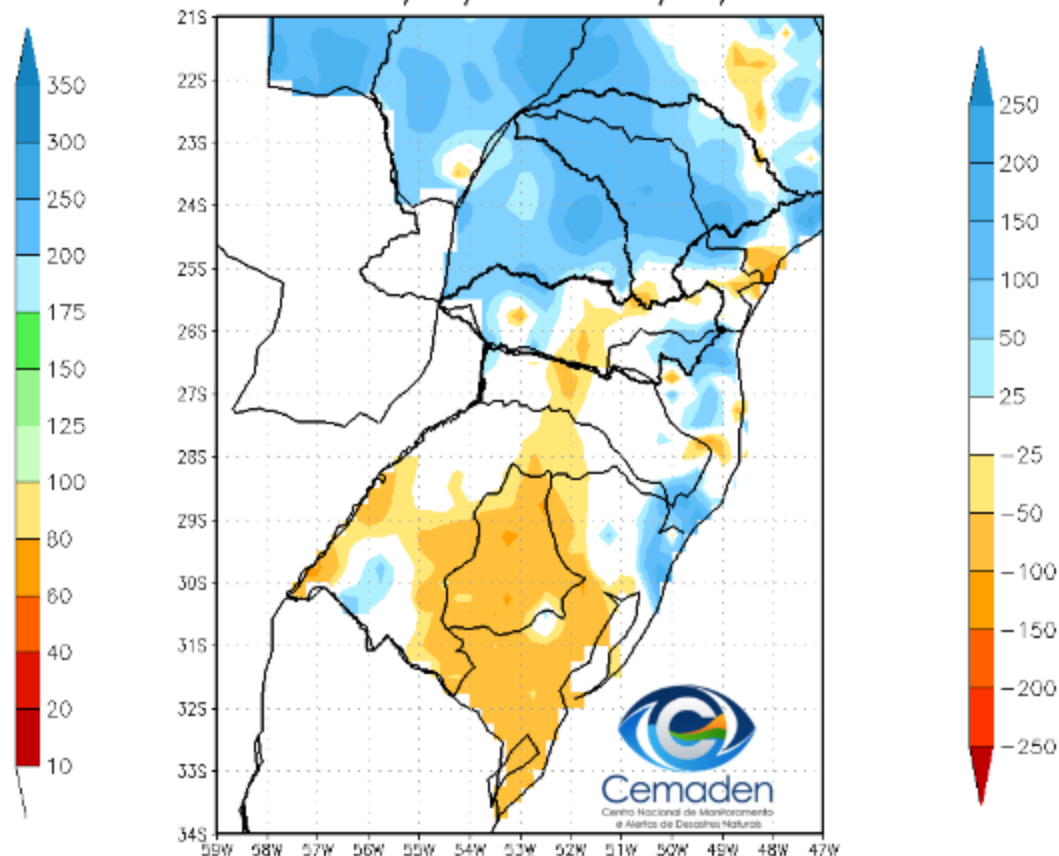
Monitoramento da situação da seca na Região Sul

Precipitação nos últimos 30 dias

Precipitação Acumulada (mm) A.S.
Período: 19/02/2023 a 21/03/2023



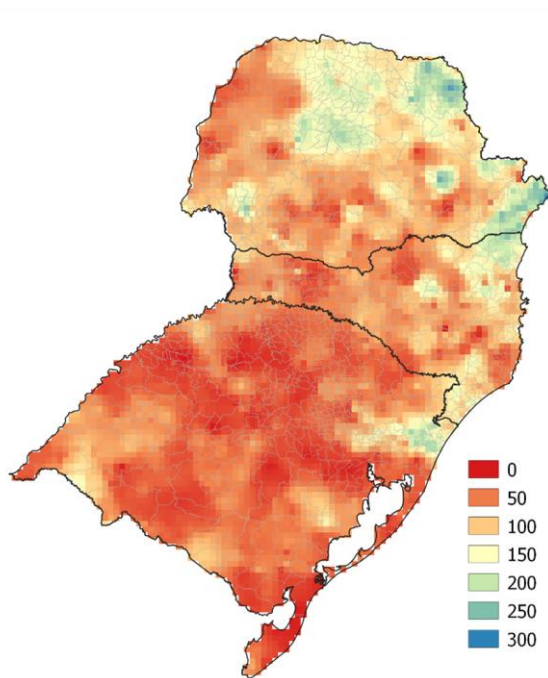
Anomalia de Precipitação (mm) A.S.
Período: 19/02/2023 a 21/03/2023



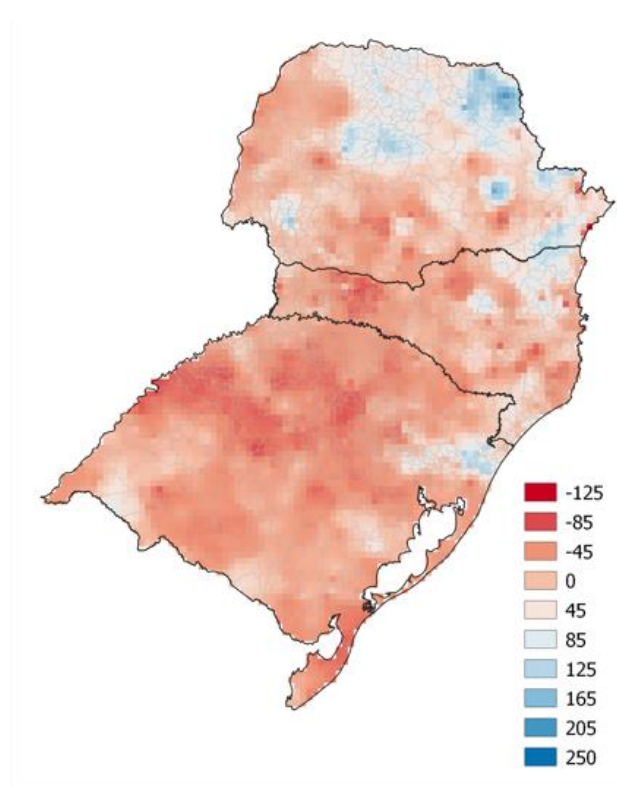
PRECIPITAÇÃO: MARÇO 2023

ATÉ 20/03

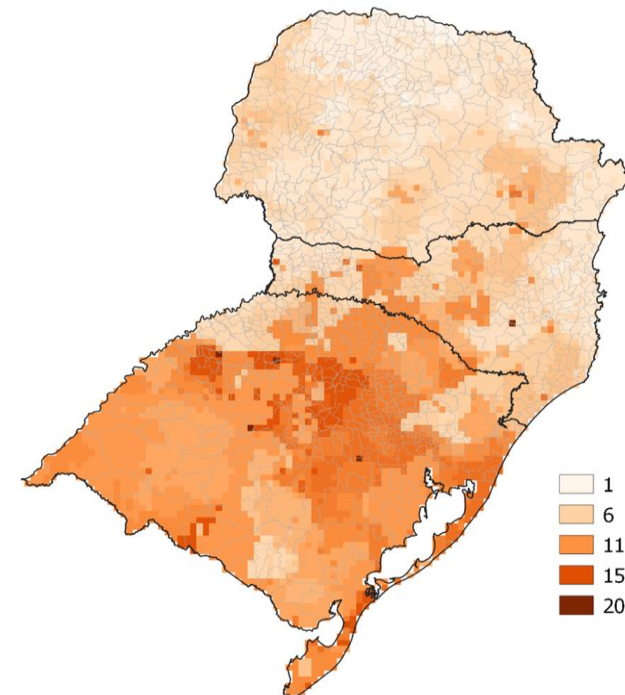
Chuva acumulada (mm)



Anomalia parcial



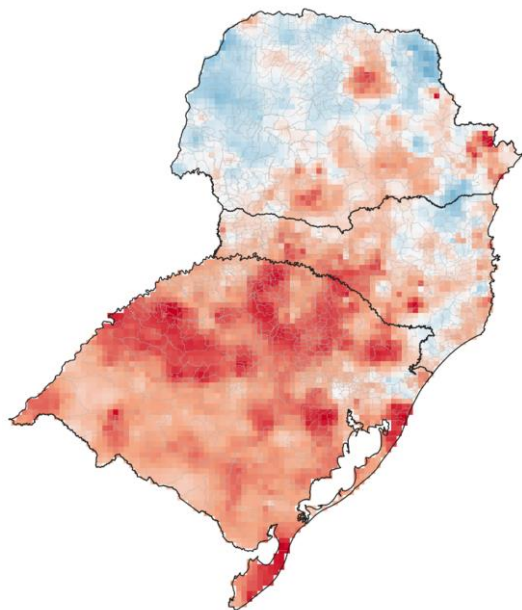
Máximo de dias consecutivos sem chuva



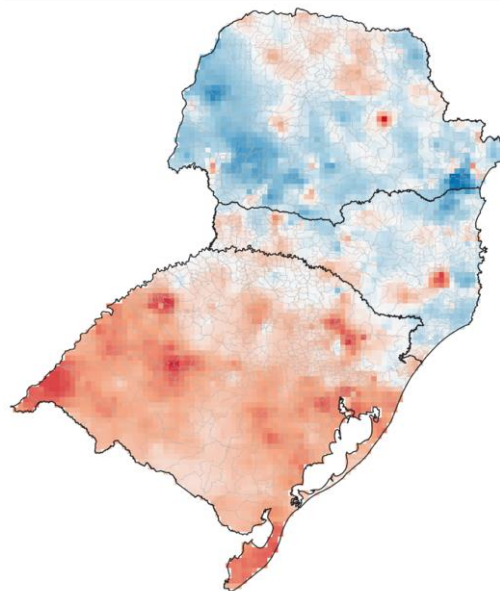
Fonte: Precipitação observada (MERGE).

SPI: MARÇO 2023

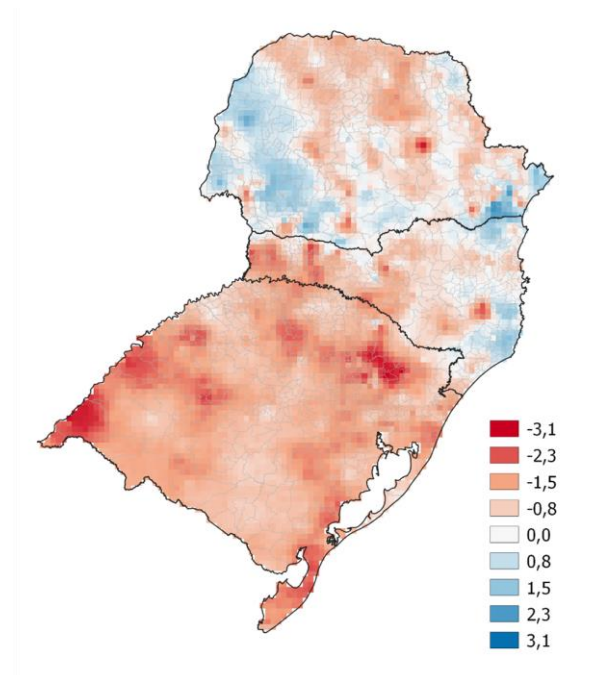
SPI03



SPI12



SPI24

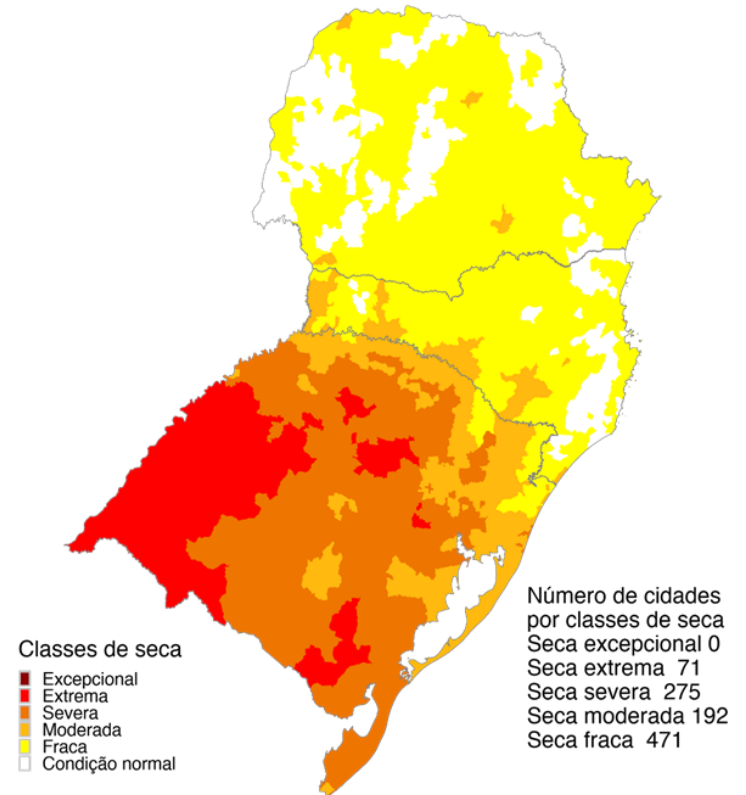
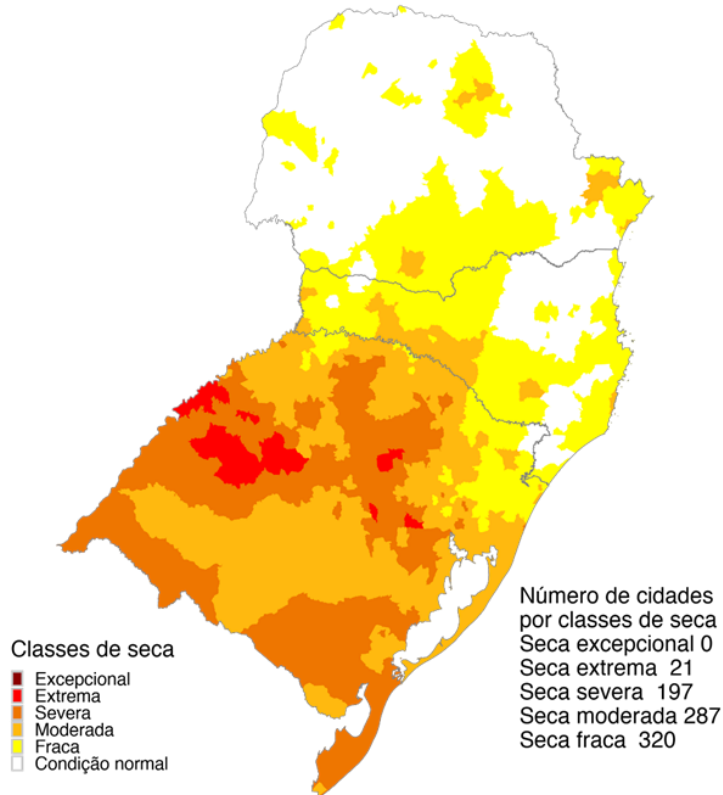


ÍNDICE INTEGRADO DE SECA - IIS

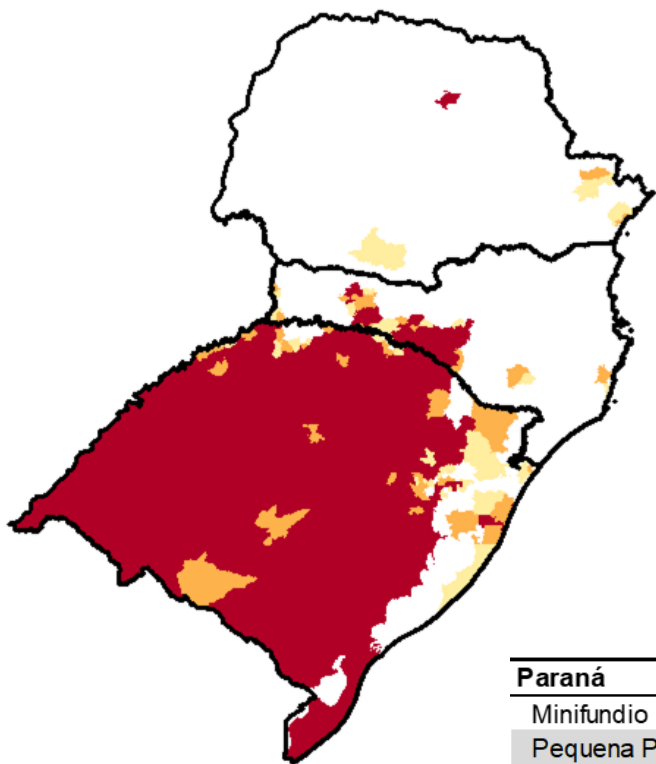
(SPI3 E 6 + VHI + AUS): MARCO/2023

IIS 3 MESES

IIS 6 MESES



ÁREAS DE PASTAGENS E AGRÍCOLAS AFETADAS PELA SECA MAR/23



UF	40 a 60%	60 - 80%	> 80%
PR	6	2	2
RS	25	35	394
SC	11	11	27

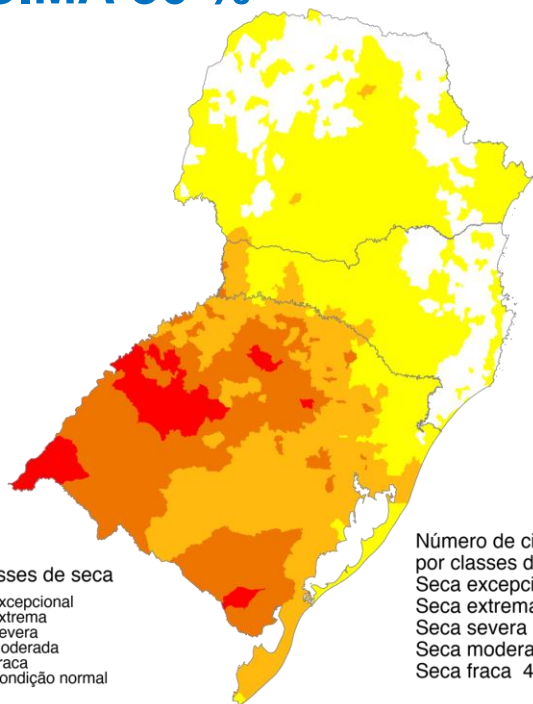
	40 a 60%	60 - 80%	> 80%
Paraná			
Minifundio	2981 (1%)	100 (*)	243 (*)
Pequena Propriedade	1539 (1%)	97 (*)	233 (*)
Media Propriedade	542 (2%)	47 (*)	122 (*)
Santa Catarina			
Minifundio	11704 (5%)	7429 (3%)	19271 (8%)
Pequena Propriedade	2910 (4%)	2349 (3%)	2349 (8%)
Media Propriedade	196 (2%)	383 (4%)	723 (7%)
Rio Grande do Sul			
Minifundio	18286 (5%)	25454 (7%)	301491 (82%)
Pequena Propriedade	956 (4%)	1841 (5%)	20904 (86%)
Media Propriedade	956 (4%)	1841 (7%)	20904 (84%)

Imóveis Rurais Impactados > 40%	FEV Imóveis Rurais Impactados > 40%
3324 (1%)	74479 (28%)
1869 (1%)	36104 (28%)
711 (3%)	7434 (28%)
38404 (17%)	77724 (52%)
11576 (14%)	19327 (45%)
1302 (13%)	1965 (46%)
345231 (94%)	363166 (99%)
131217 (95%)	135713 (98%)
23701 (96%)	24259 (98%)

(*) Porcentagem inferior a 1%.

CENÁRIOS ÍNDICE INTEGRADO DE SECA - IIS: ABRIL/2023

ACIMA 30 %

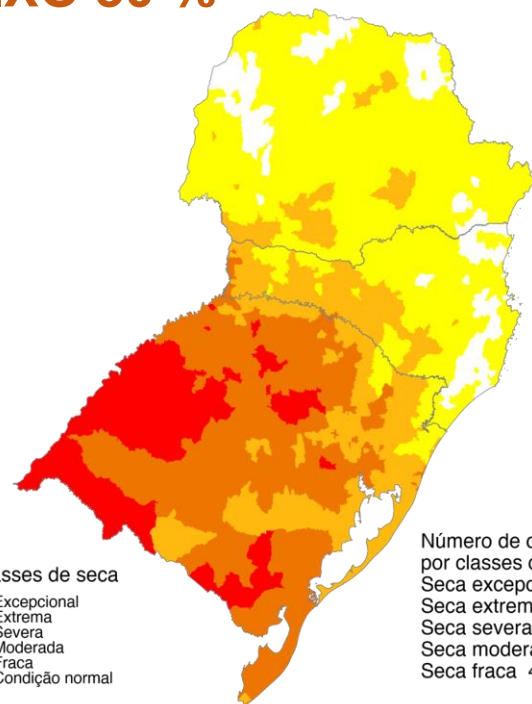


Classes de seca
 ■ Excepcional
 ■ Extrema
 ■ Severa
 ■ Moderada
 ■ Fraca
 □ Condição normal

Número de cidades por classes de seca
 Seca excepcional 0
 Seca extrema 32
 Seca severa 172
 Seca moderada 305
 Seca fraca 412

Março 2023
 Índice Integrado de Seca (SPI6, VHI, US)
 Cenário: Chuva + 40%
 Dados: CPTEC/INPE - NOAA - NASA / Preparação: Cemaden/MCTI

ABAIXO 30 %

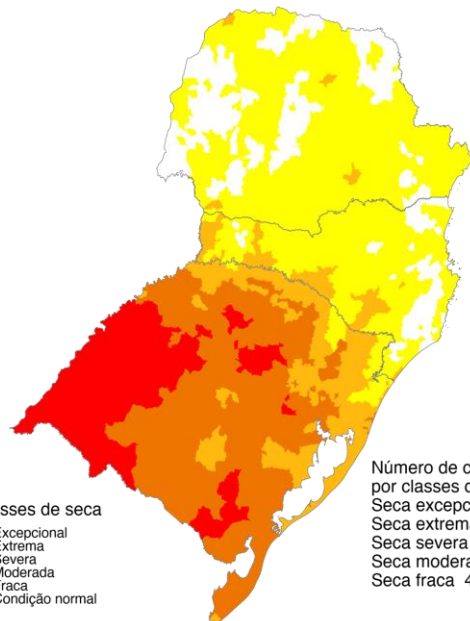


Classes de seca
 ■ Excepcional
 ■ Extrema
 ■ Severa
 ■ Moderada
 ■ Fraca
 □ Condição normal

Número de cidades por classes de seca
 Seca excepcional 0
 Seca extrema 76
 Seca severa 290
 Seca moderada 263
 Seca fraca 441

Março 2023
 Índice Integrado de Seca (SPI6, VHI, AUS)
 Cenário: Chuva - 40%
 Dados: CPTEC/INPE - NOAA - NASA / Preparação: Cemaden/MCTI

Mar/23

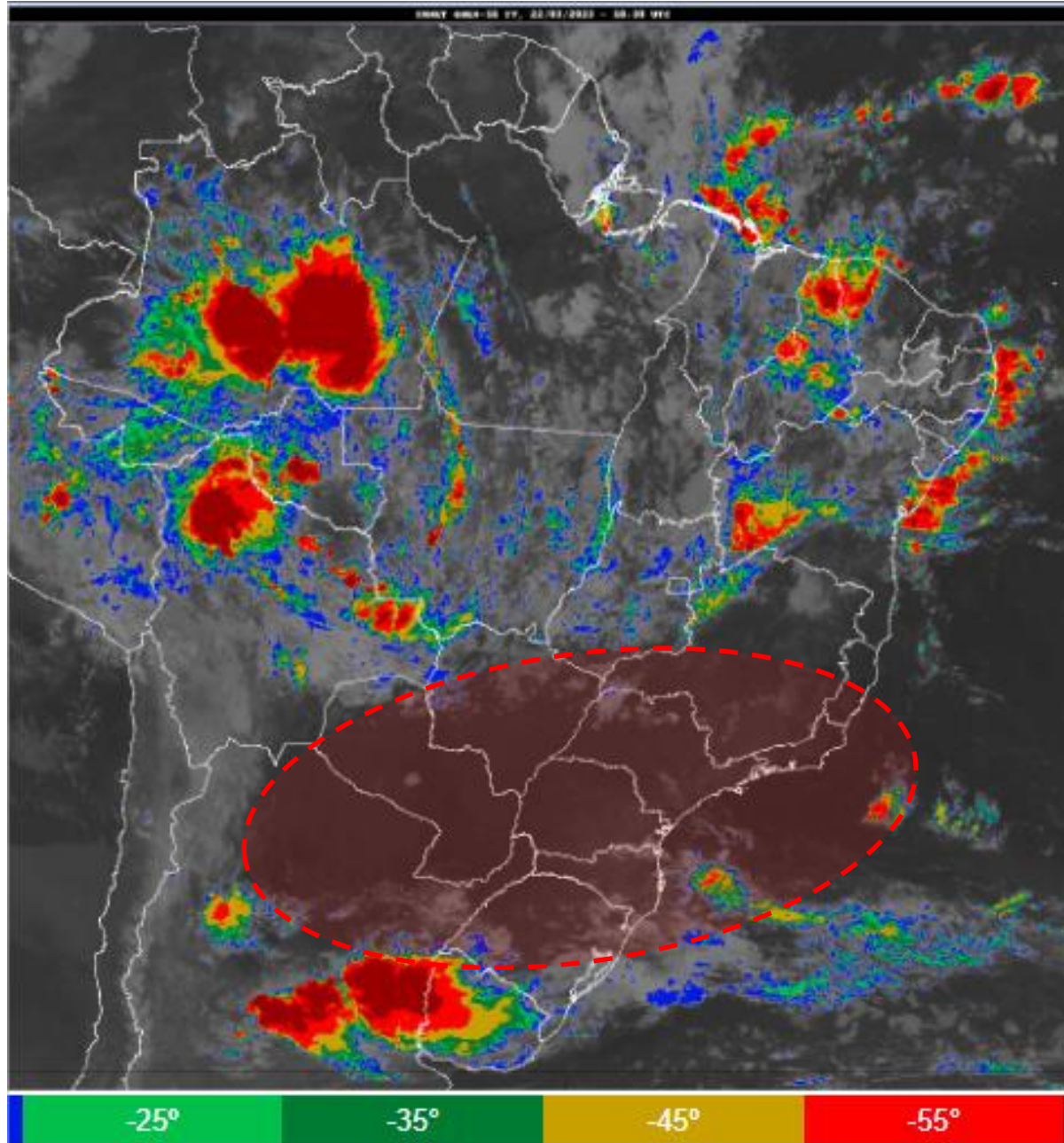


Classes de seca
 ■ Excepcional
 ■ Extrema
 ■ Severa
 ■ Moderada
 ■ Fraca
 □ Condição normal

Número de cidades por classes de seca
 Seca excepcional 0
 Seca extrema 71
 Seca severa 275
 Seca moderada 192
 Seca fraca 471

Março 2023
 Índice Integrado de Seca (SPI6, VHI, US)
 Dados: CPTEC/INPE - NOAA - NASA / Preparação: Cemaden/MCTI

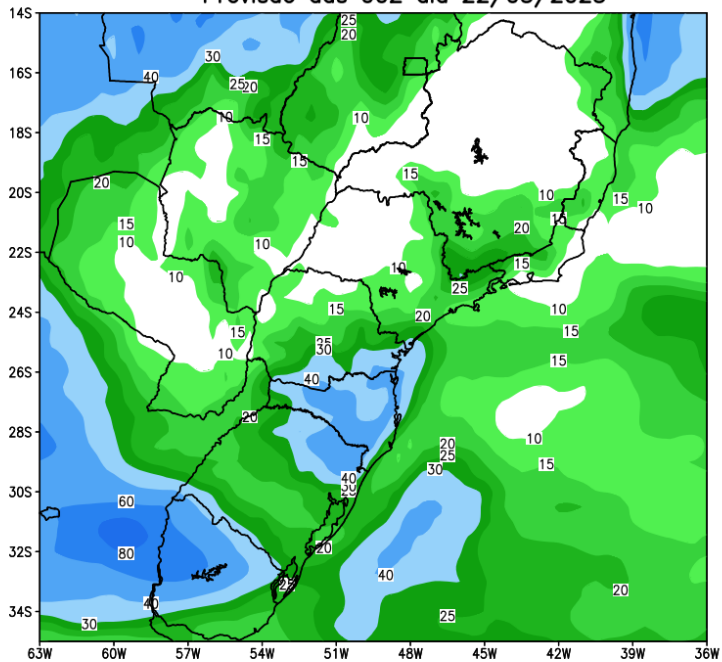
Situação meteorológica atual



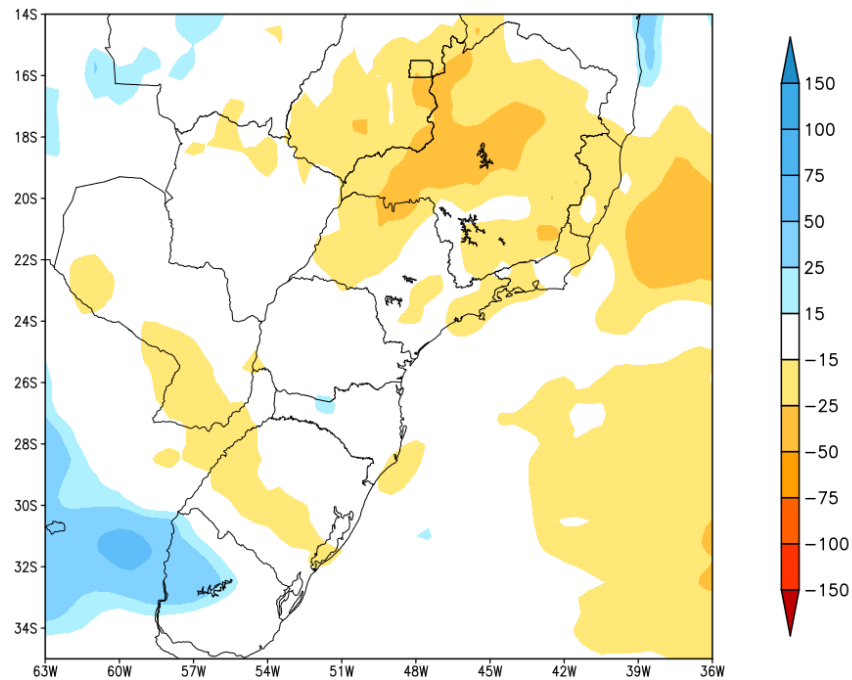
Fonte: INMET

Previsão de chuva próximos 7 dias

GEFS / BRASIL_SUL
Precipitacao acumulada 1aSem (mm)
Previsao das 00Z dia 22/03/2023



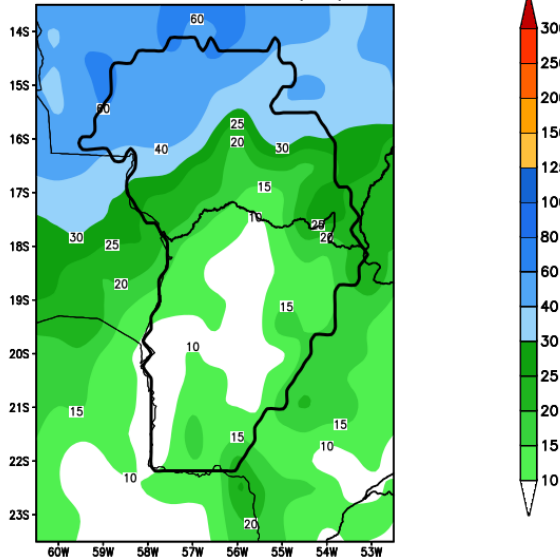
Anomalia de Precipitacao BR_SUL (mm)
Periodo: 2023032200 a 2023032900



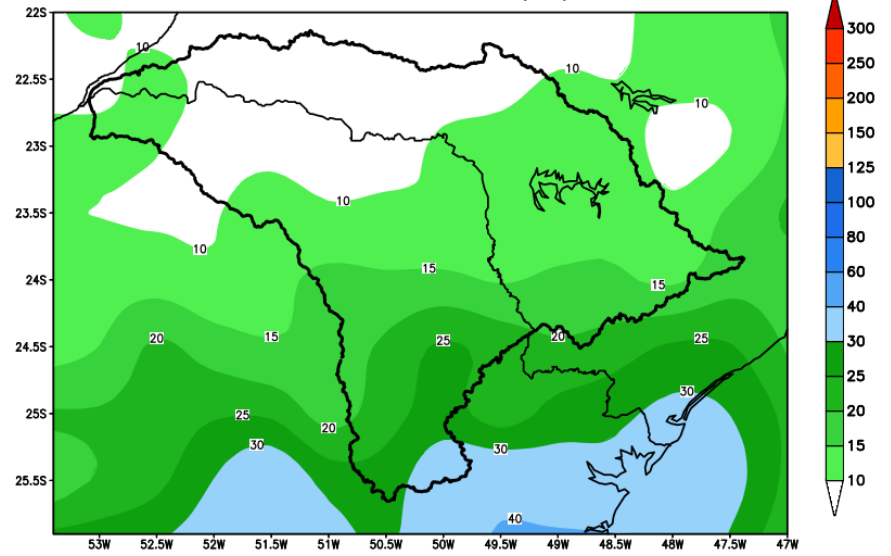
MODELO GFS

Previsão para as principais bacias

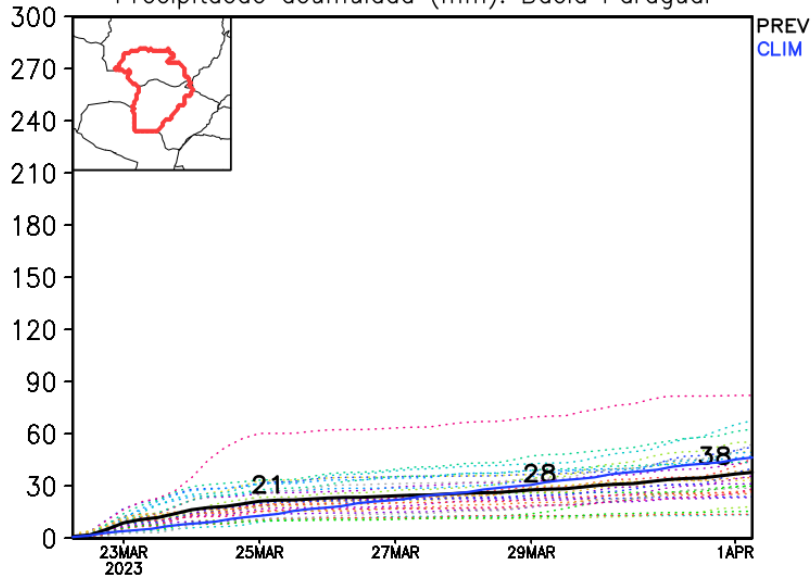
GEFS / Bacia do Rio Paraguai
Precipitação acumulada em 7 dias (mm)
Previsão das 00Z dia 22/03/2023



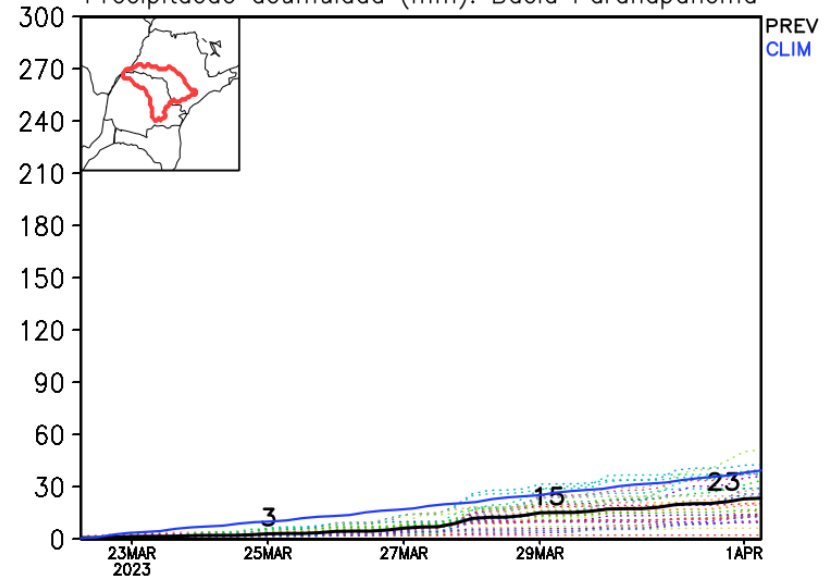
GEFS / Bacia do Rio Paranapanema
Precipitação acumulada em 7 dias (mm)
Previsão das 00Z dia 22/03/2023



Precipitação acumulada (mm): Bacia Paraguai

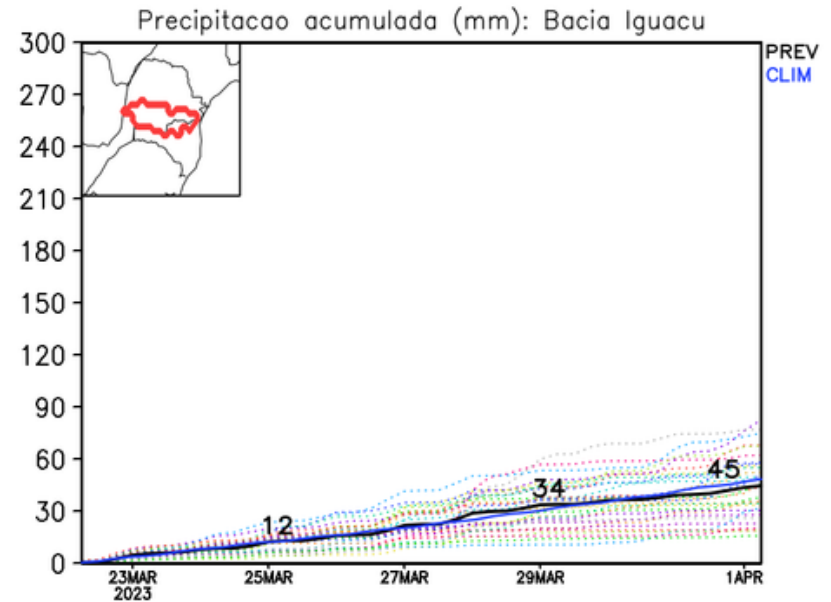
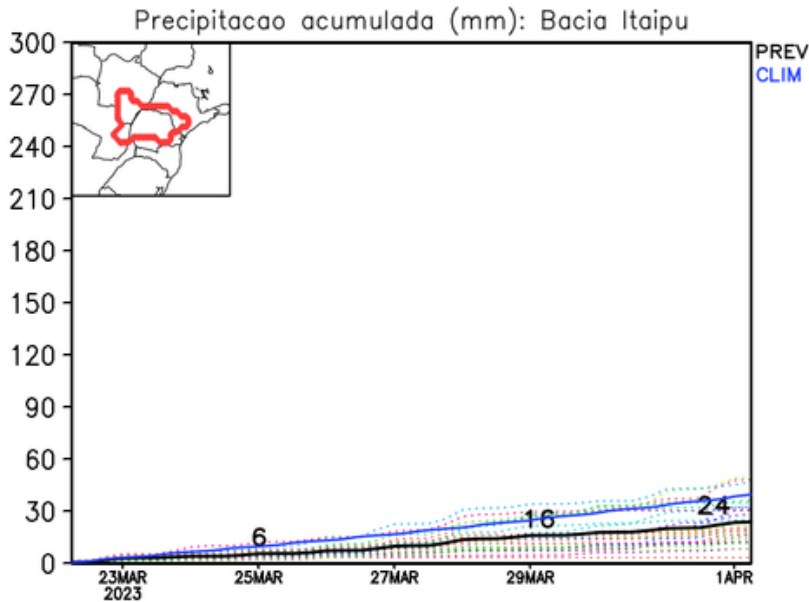
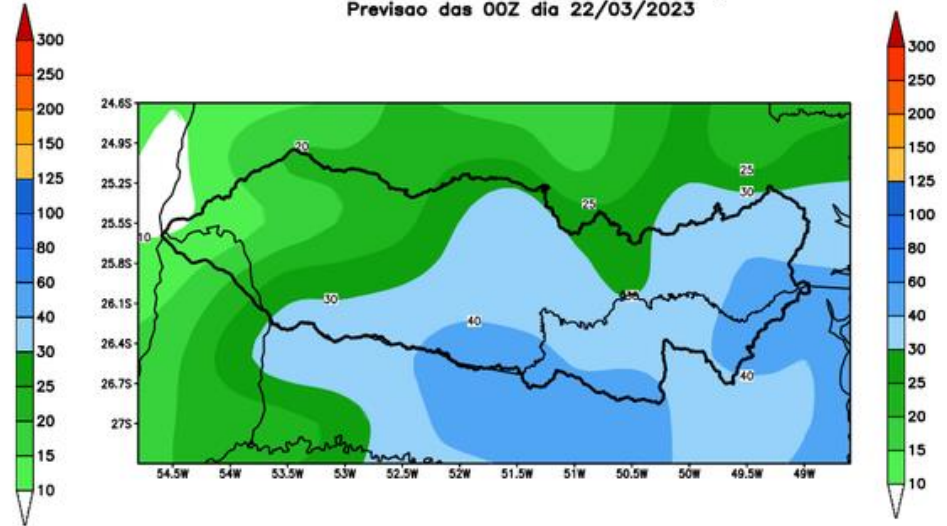
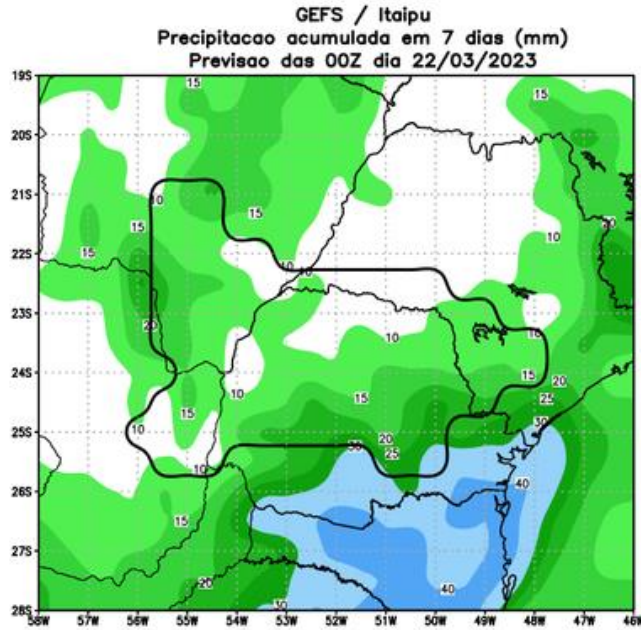


Precipitação acumulada (mm): Bacia Paranapanema

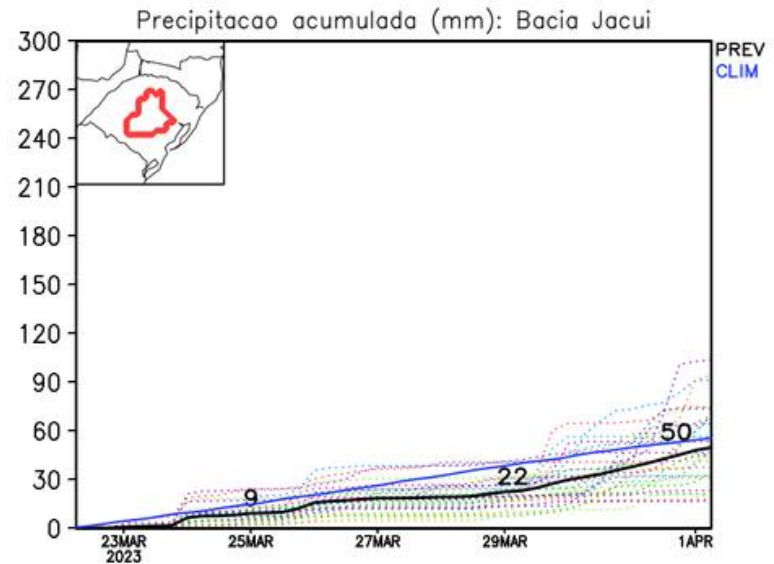
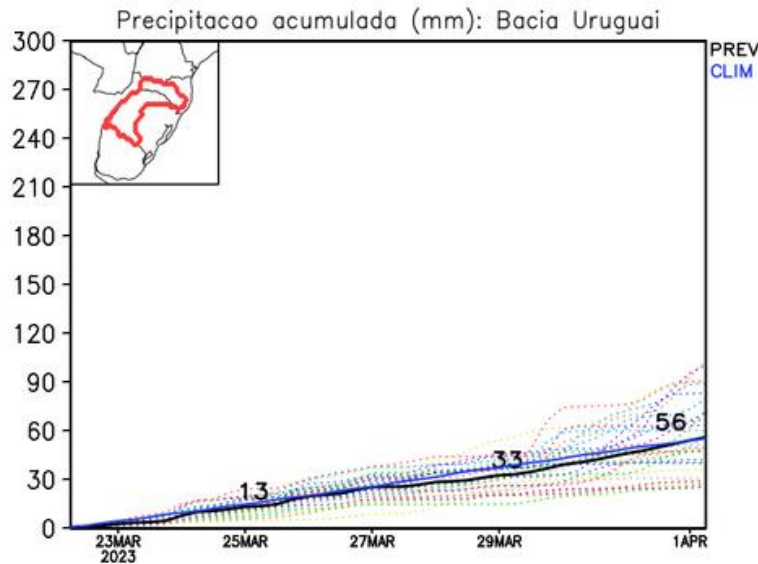
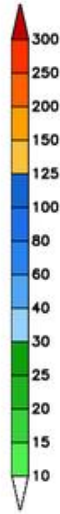
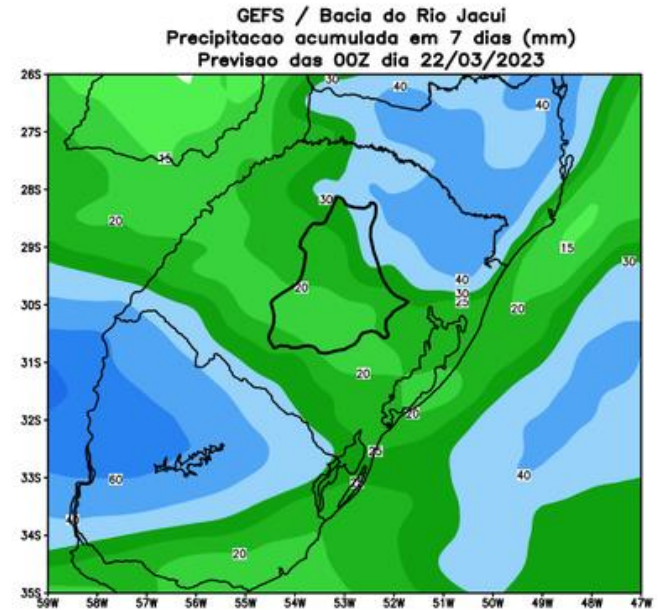
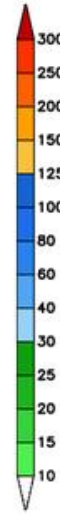
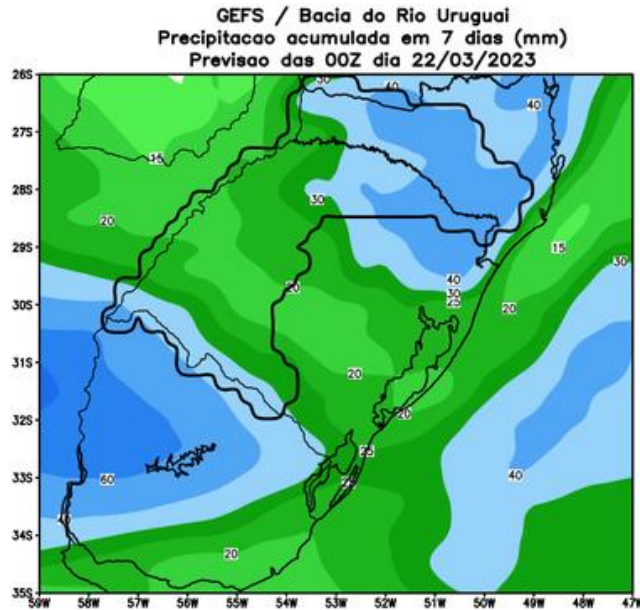


MODELO GFS

Previsão para as principais bacias

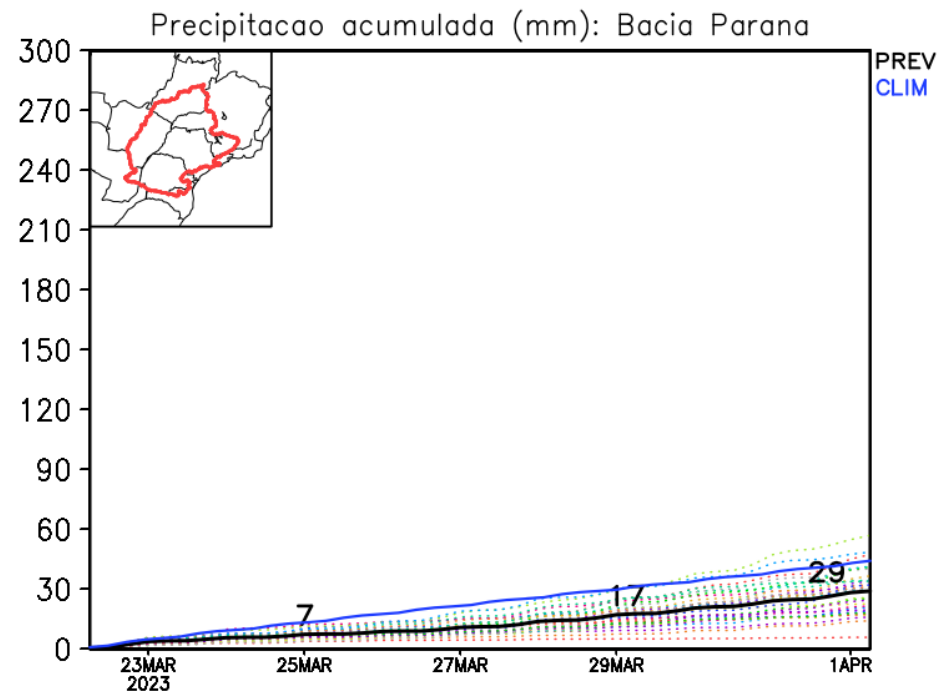
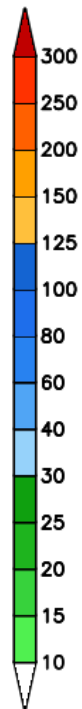
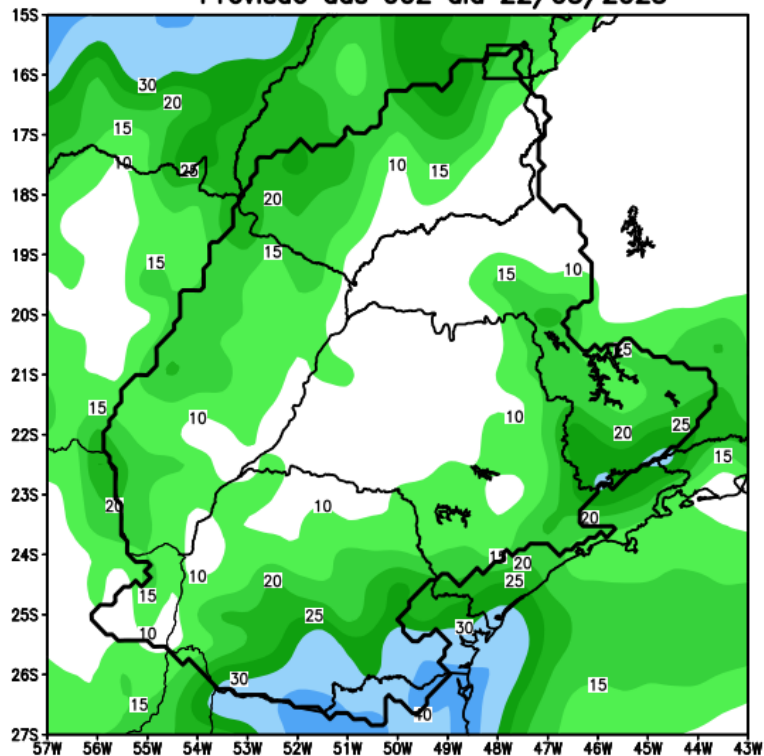


Previsão para as principais bacias



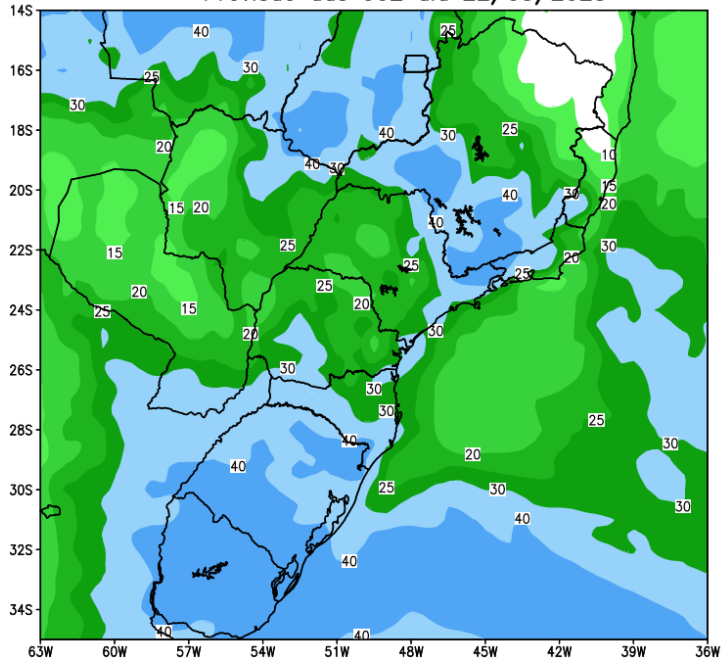
Previsão para as principais bacias

GEFS / Bacia do Parana
Precipitacao acumulada em 7 dias (mm)
Previsao das 00Z dia 22/03/2023

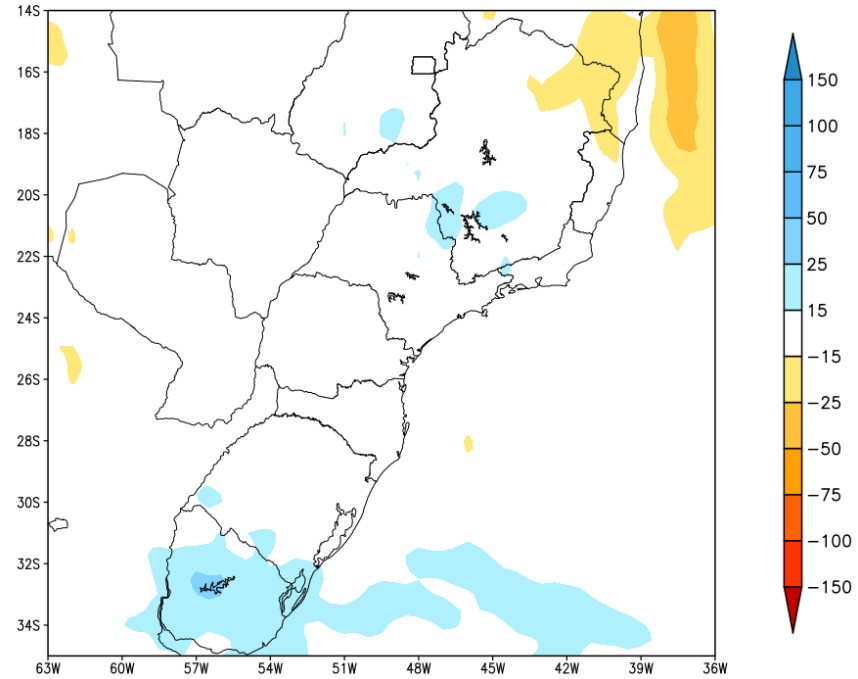


Tendência para a segunda semana

GEFS / BRASIL_SUL
Precipitacao acumulada 2aSem (mm)
Previsao das 00Z dia 22/03/2023



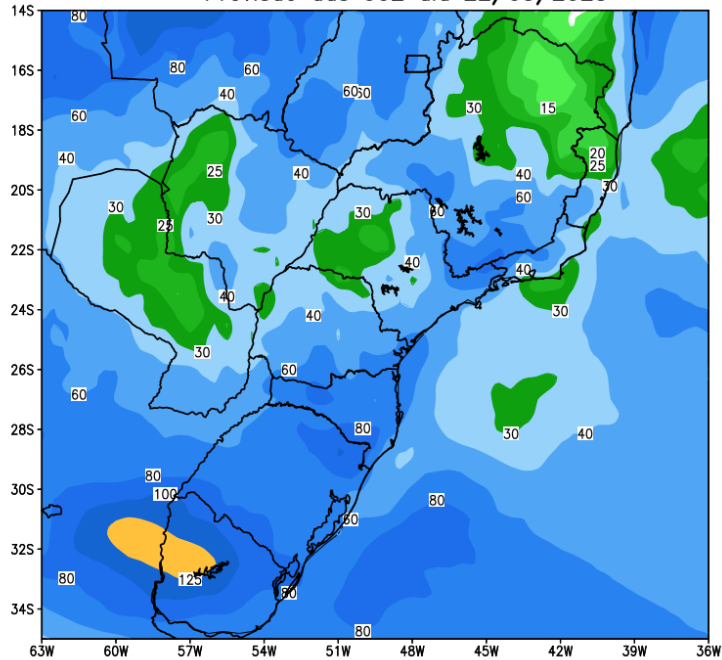
Anomalia de Precipitacao BR SUL (mm)
Periodo: 2023033000 a 2023040500



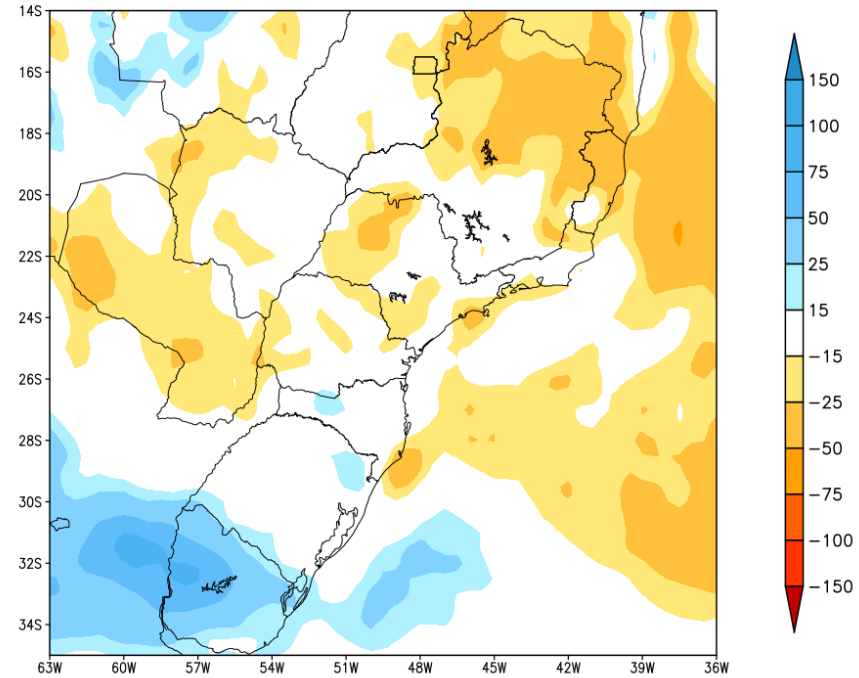
MODELO GFS

Tendência para as duas próximas semanas

GEFS / BRASIL_SUL
Precipitacao acumulada 14dias (mm)
Previsao das 00Z dia 22/03/2023



Anomalia de Precipitacao BR_SUL (mm)
Periodo: 2023032200 a 2023040500

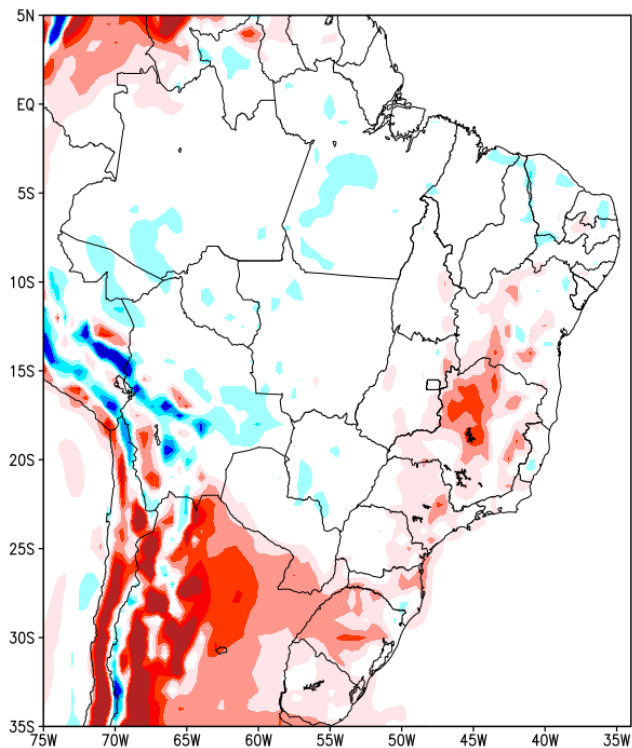


MODELO GFS

Previsão de Temperatura

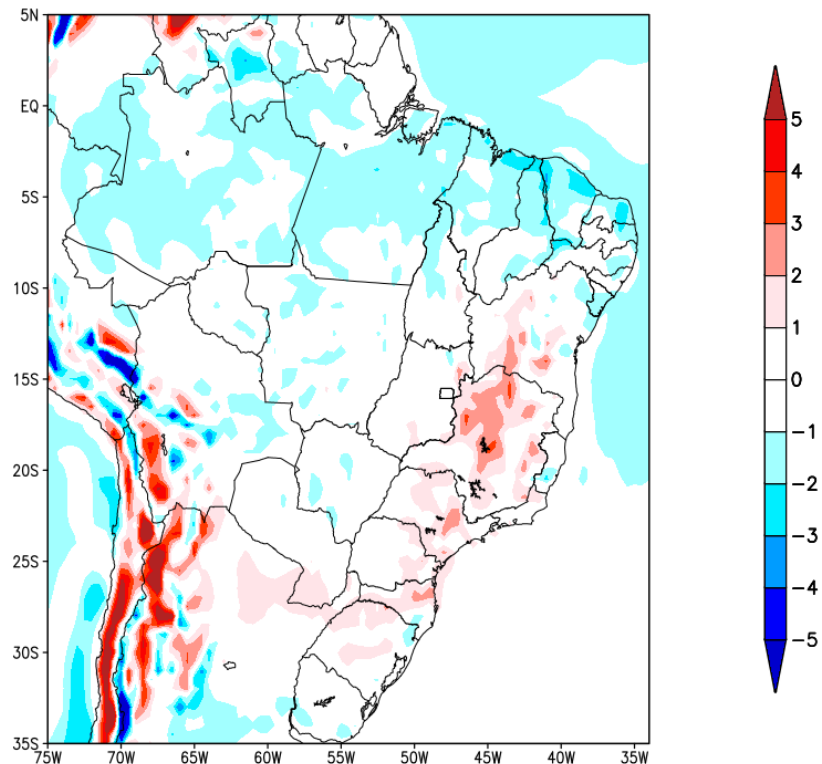
1ª Semana

Anomalia de Temperatura BR (C)
Período: 2023032200 a 2023032900

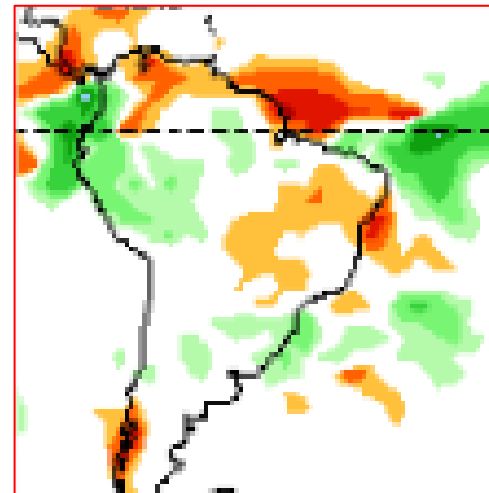
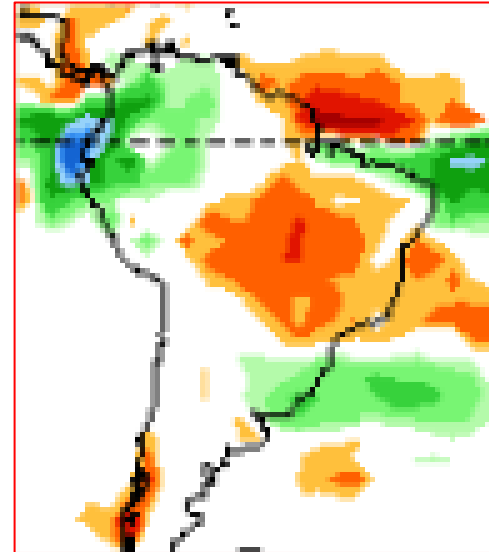
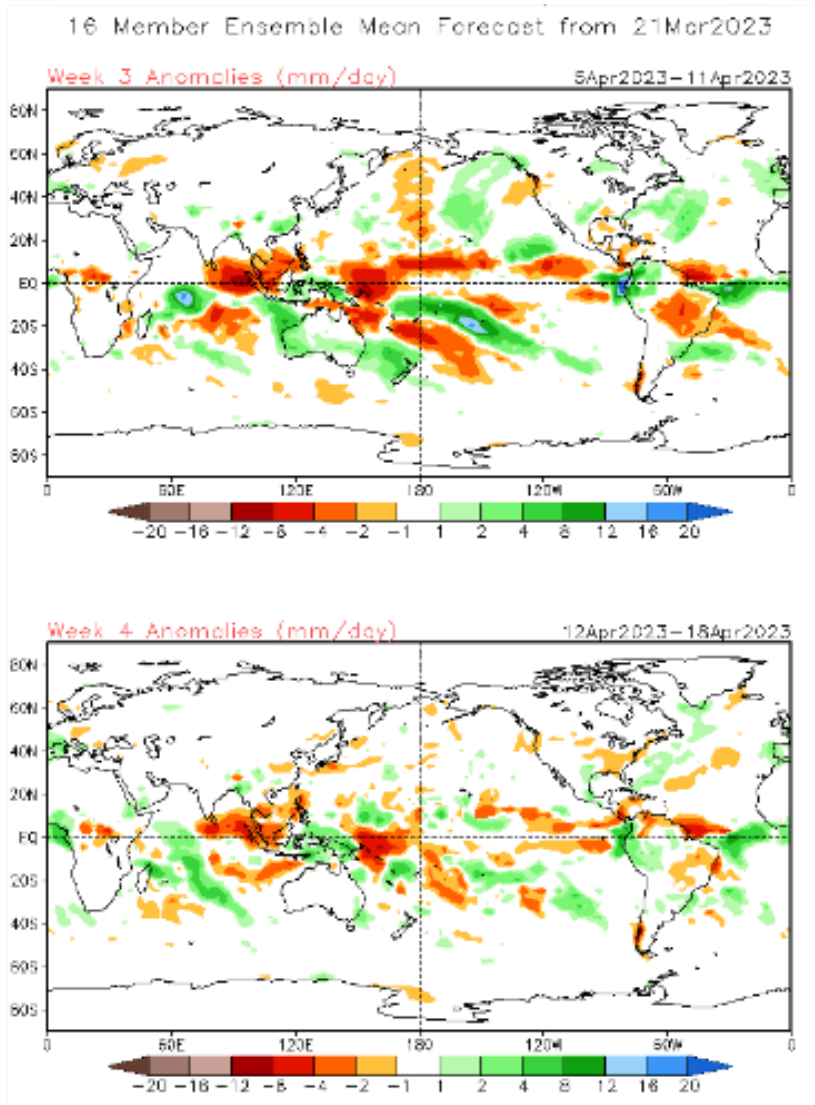


2ª Semana

Anomalia de Temperatura BR (C)
Período: 2023033000 a 2023040500

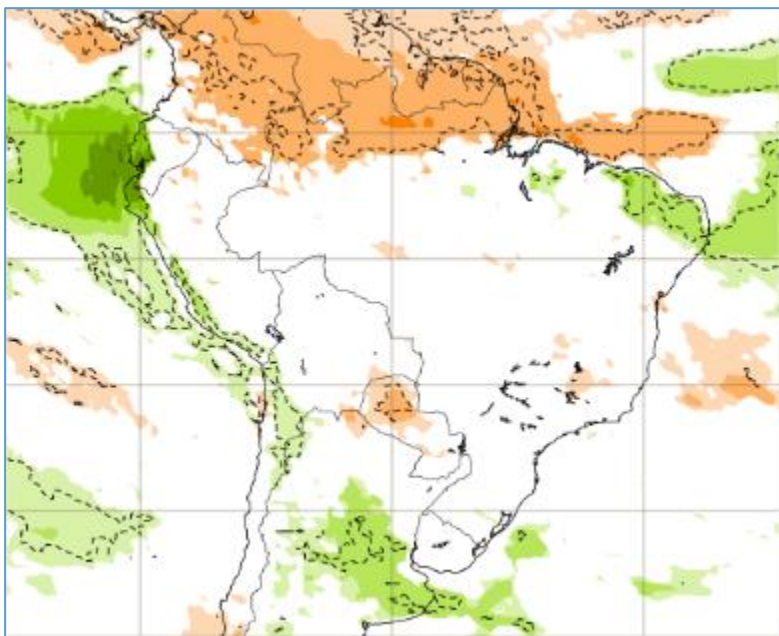


Tendência 3a e 4a semanas

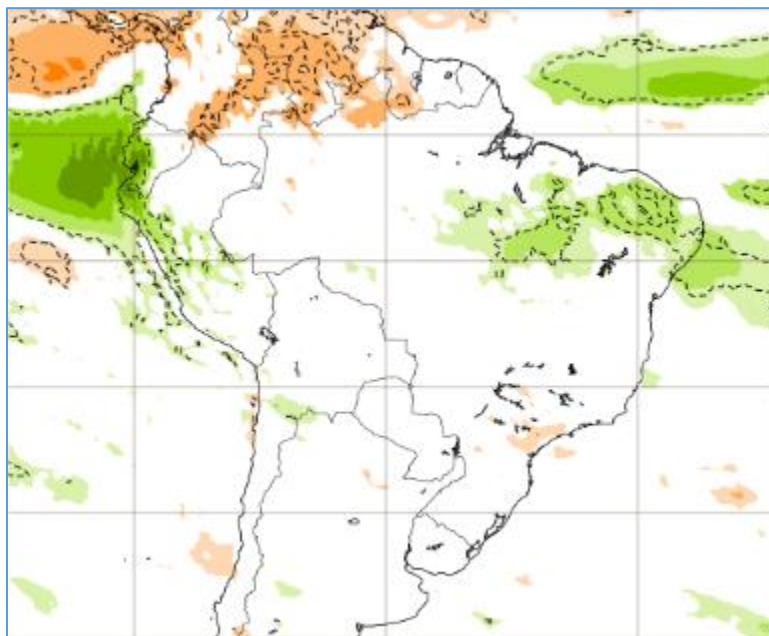


Tendência para 3ª e 4ª semanas

03-10/04

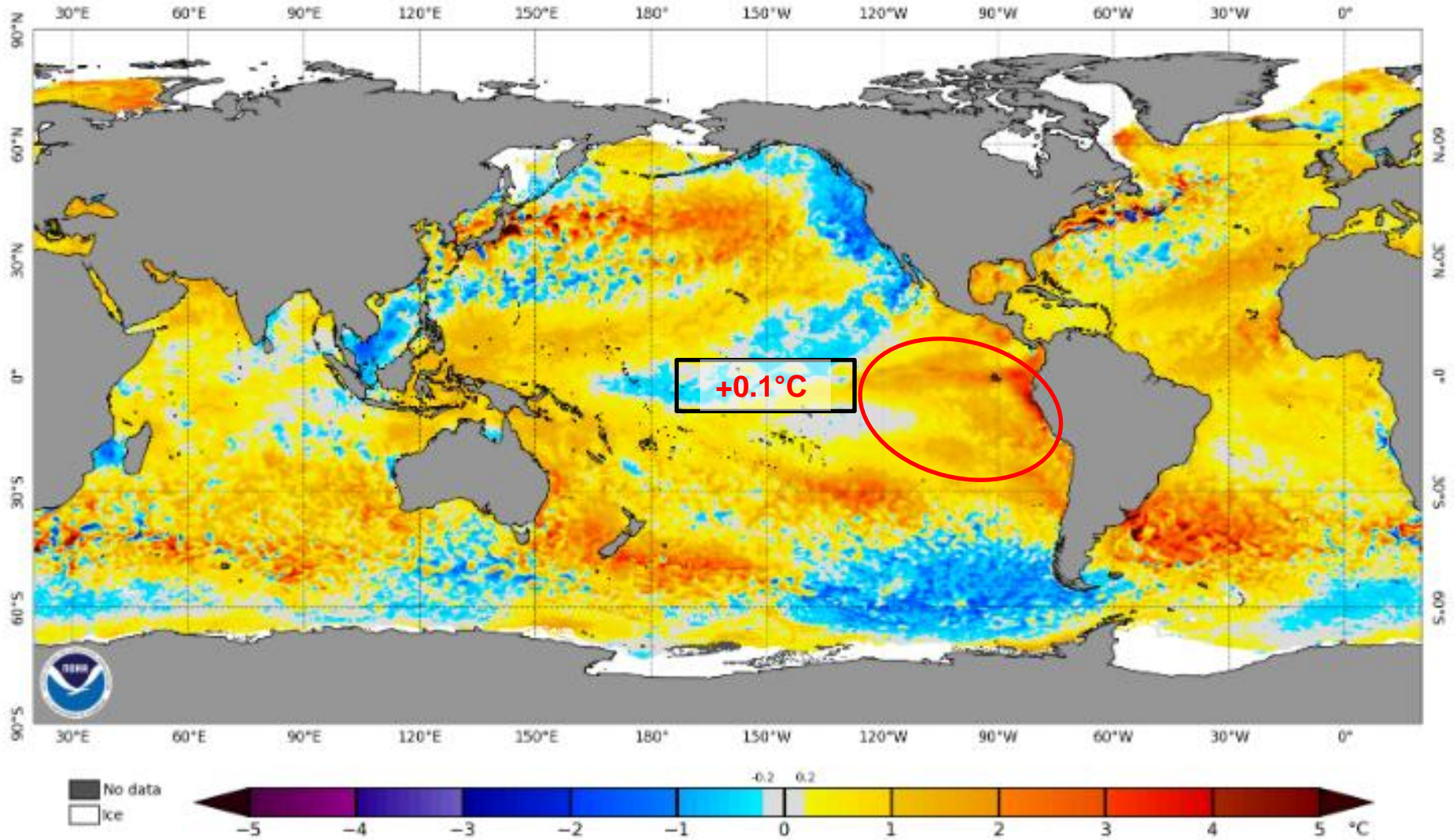


10-17/04



Status Atual: Neutralidade

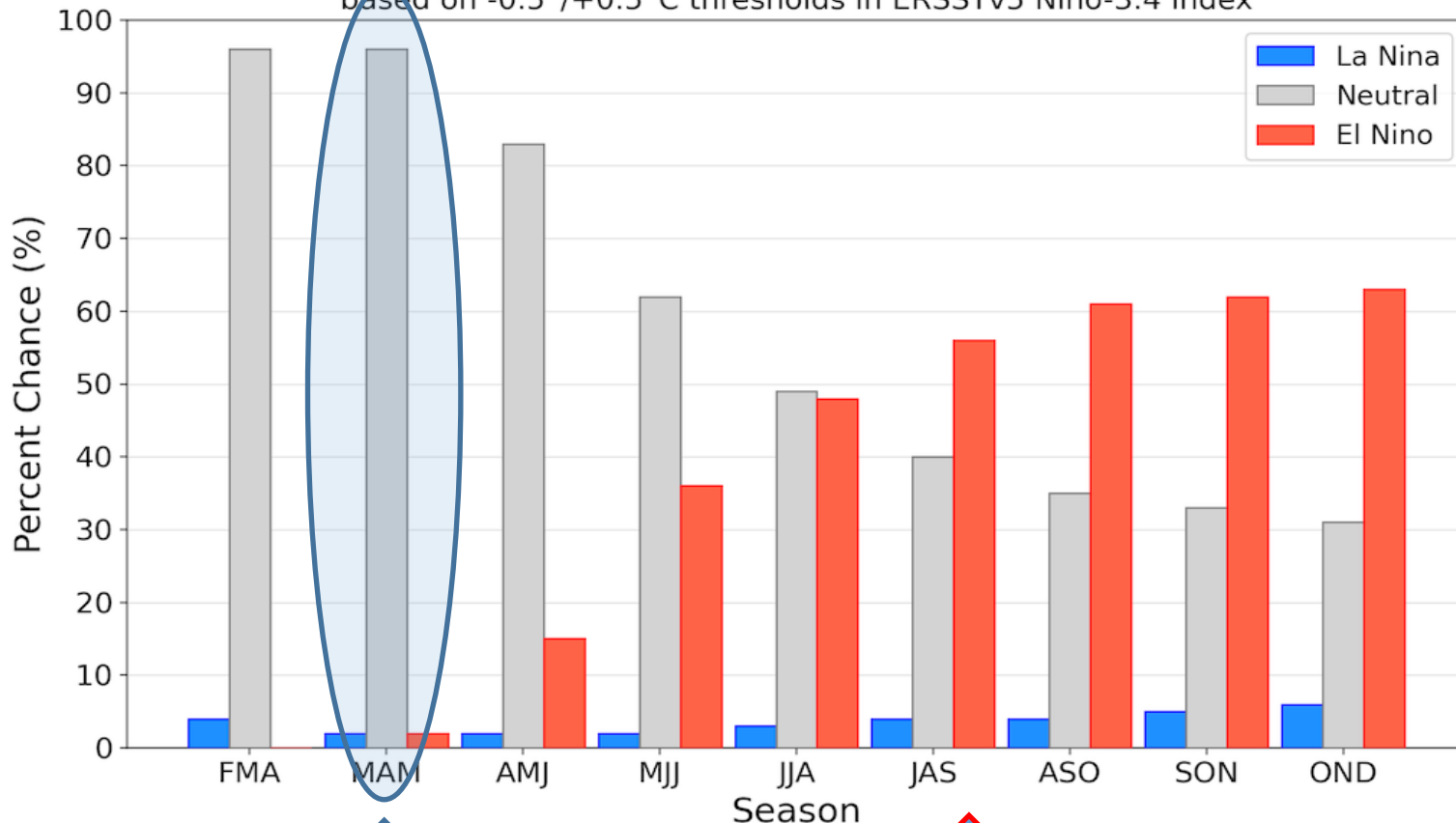
NOAA Coral Reef Watch Daily 5km SST Anomalies (v3.1) 19 Mar 2023



Previsão do “La Niña”

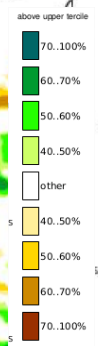
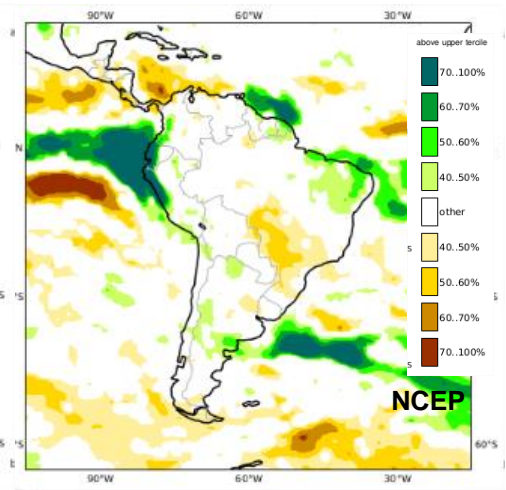
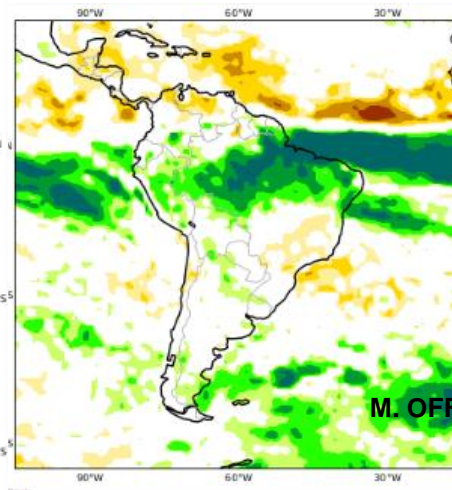
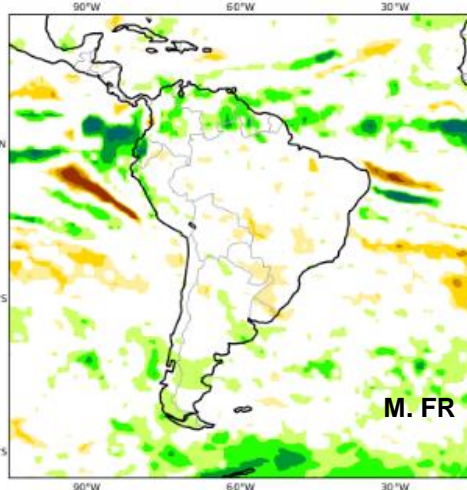
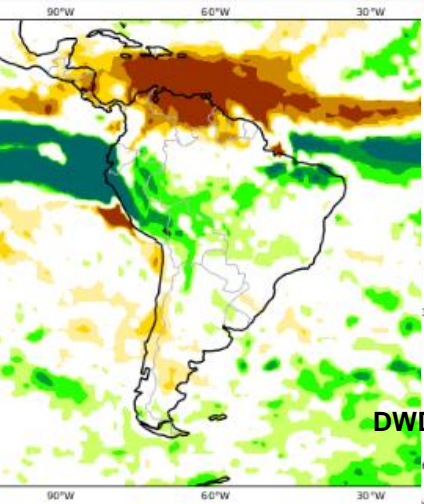
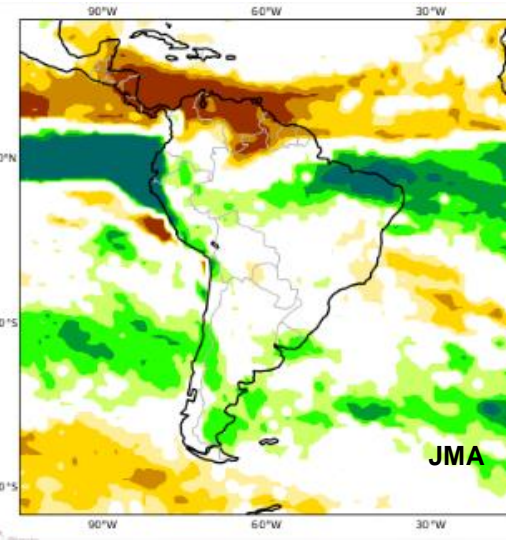
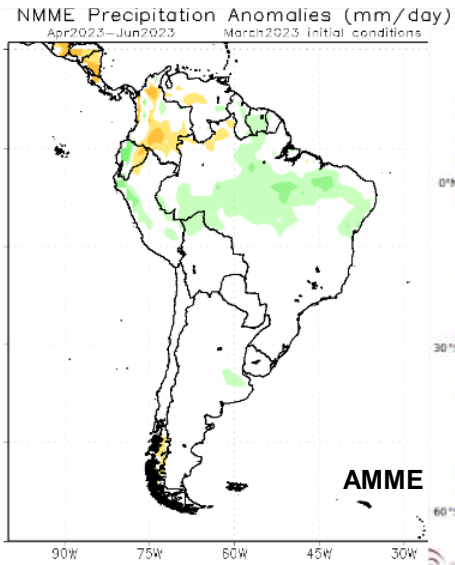
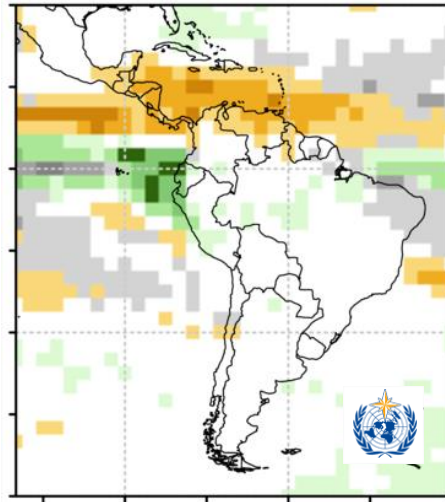
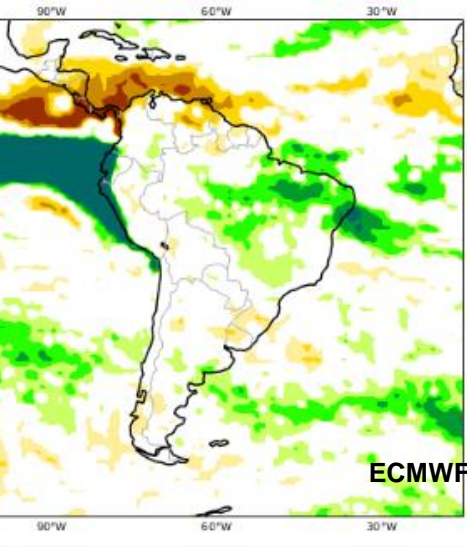
Official NOAA CPC ENSO Probabilities (issued Mar. 2023)

based on $-0.5^{\circ}/+0.5^{\circ}\text{C}$ thresholds in ERSSTv5 Niño-3.4 index



Status Atual: **La Niña**

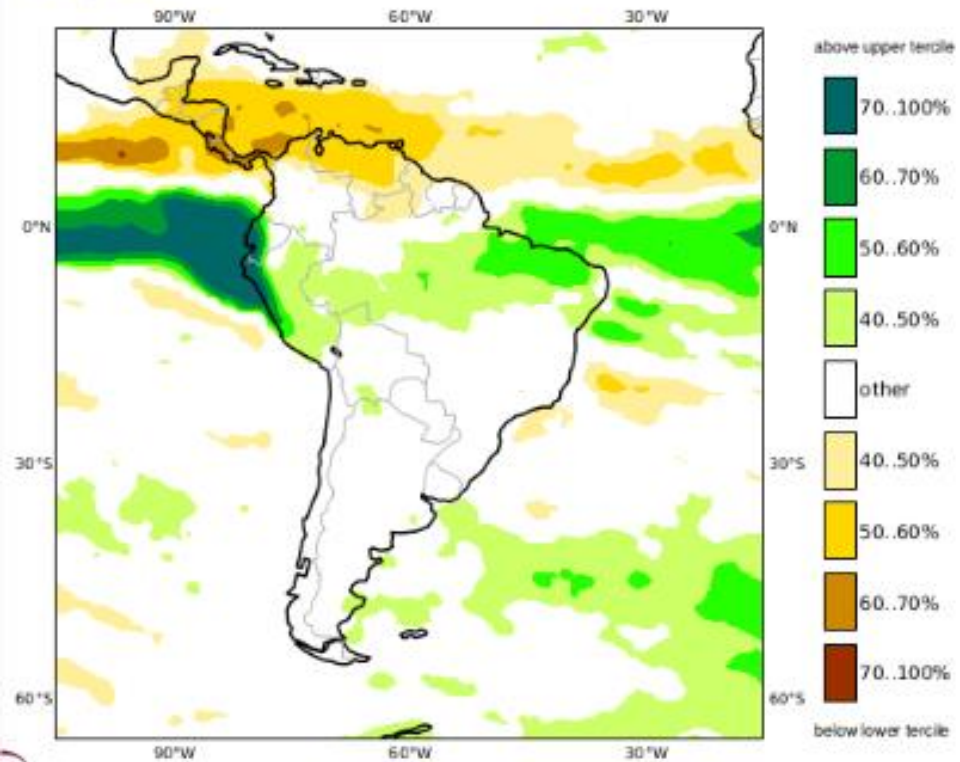
Previsão sazonal de Chuva AMJ



Previsão Multi Modelo AMJ

C3S multi-system seasonal forecast
Prob(most likely category of precipitation)
Nominal forecast start: 01/03/23
Unweighted mean

AMJ 2023



NMME Precipitation Anomalies (mm/day)
Apr2023–Jun2023 March2023 initial conditions

