

Monitoramento da situação da seca na Região Sul

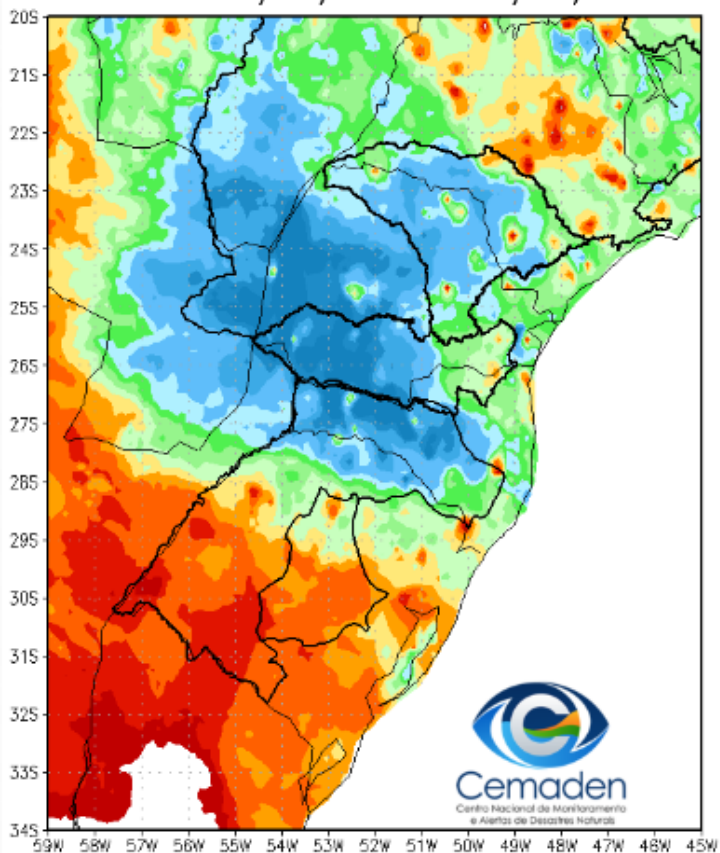


Cemaden
Centro Nacional de Monitoramento
e Alertas de Desastres Naturais

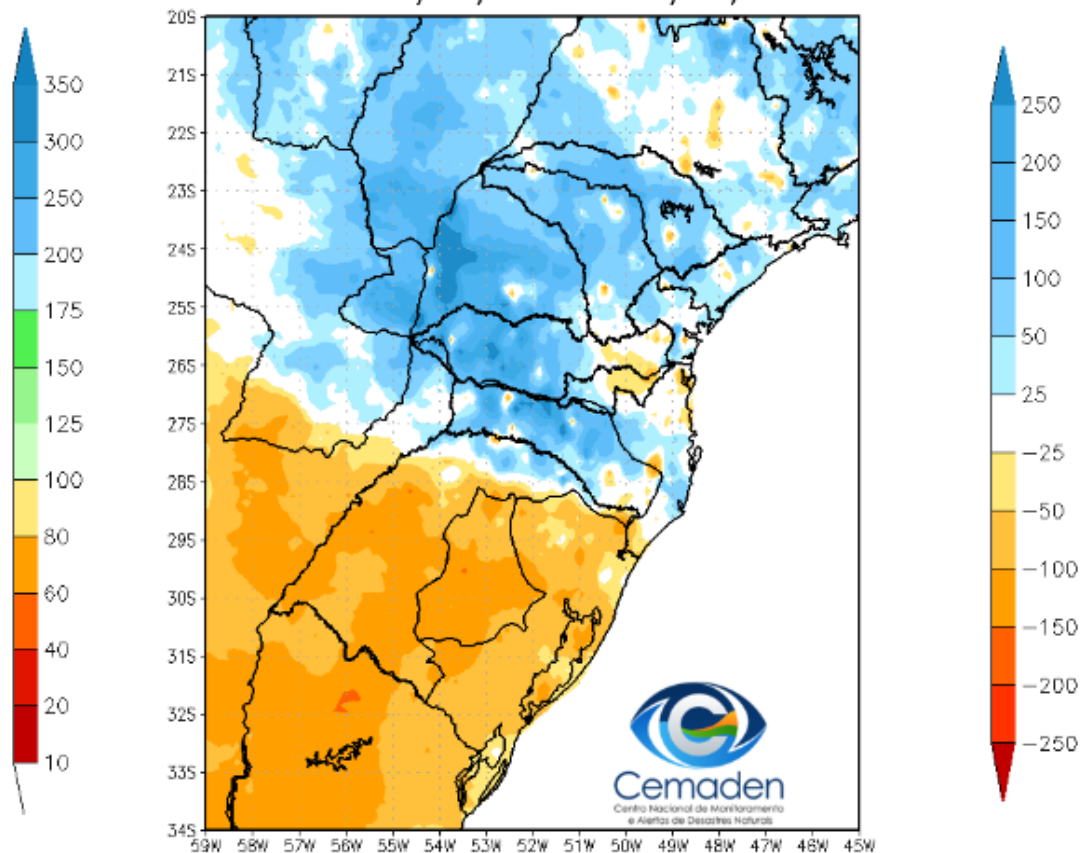
19 de Outubro de 2022

Precipitação nos últimos 30 dias

Precipitação Acumulada (mm) A.S.
Período: 18/09/2022 a 18/10/2022

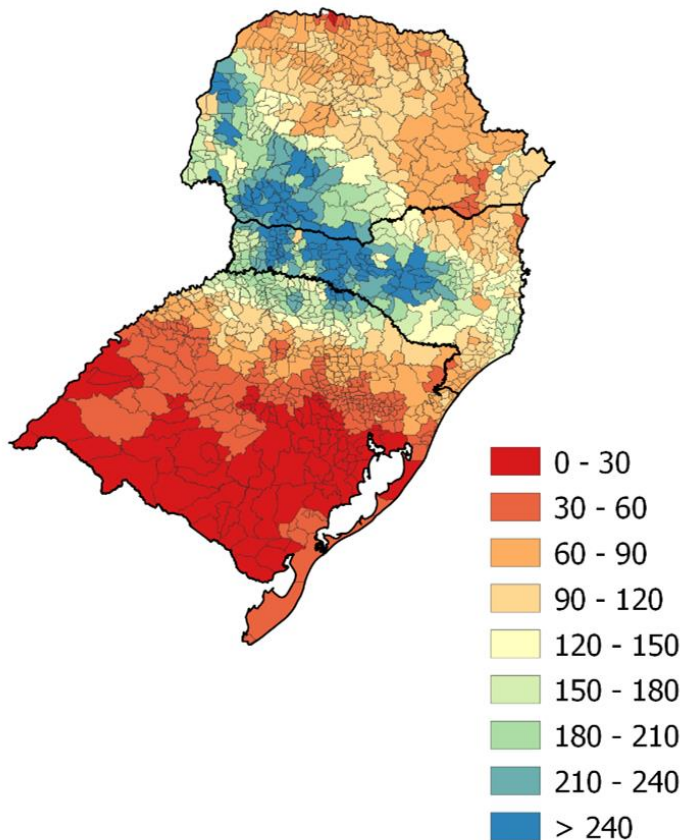


Anomalia de Precipitação (mm) A.S.
Período: 18/09/2022 a 18/10/2022

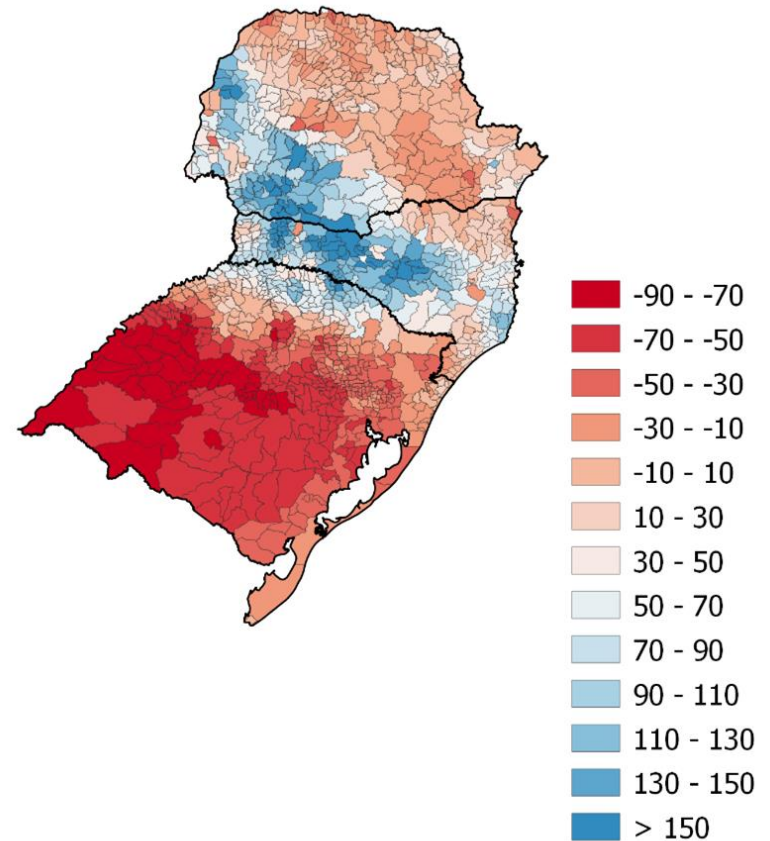


Precipitação – Região Sul: **Outubro/2022** (até dia 17/10)

Chuva acumulada (mm)

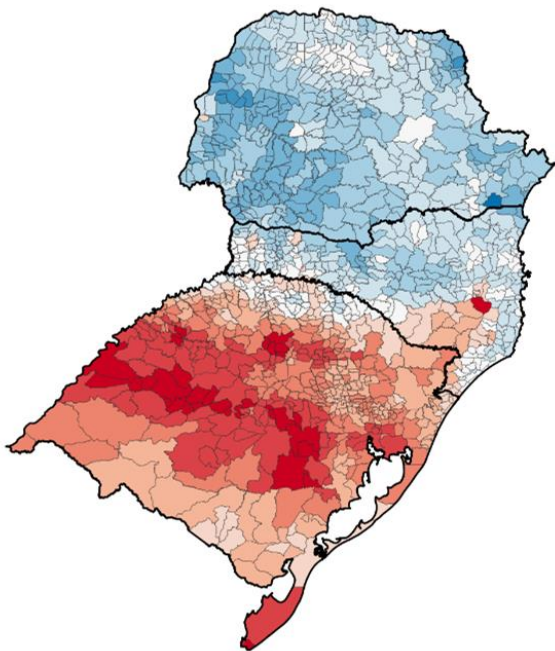


Anomalia em mm

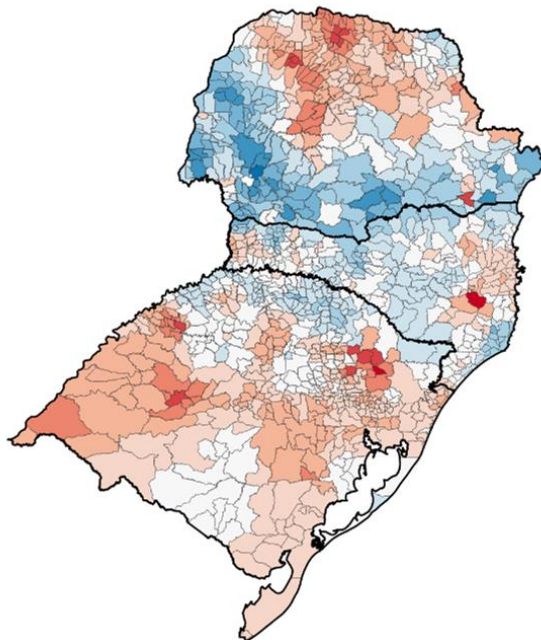


SPI: Outubro de 2022

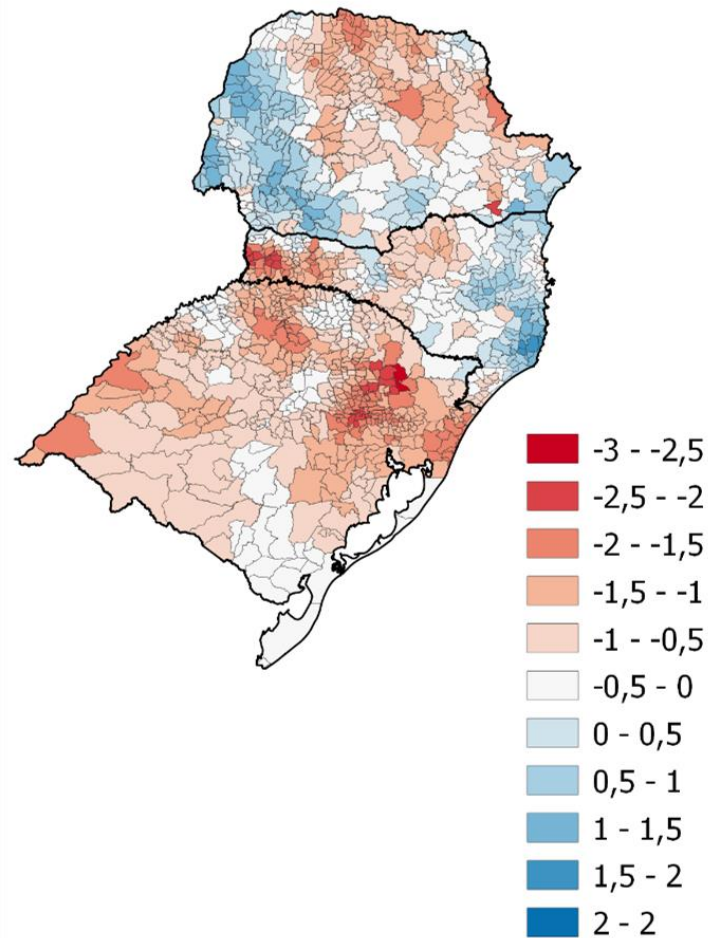
SPI03



SPI12

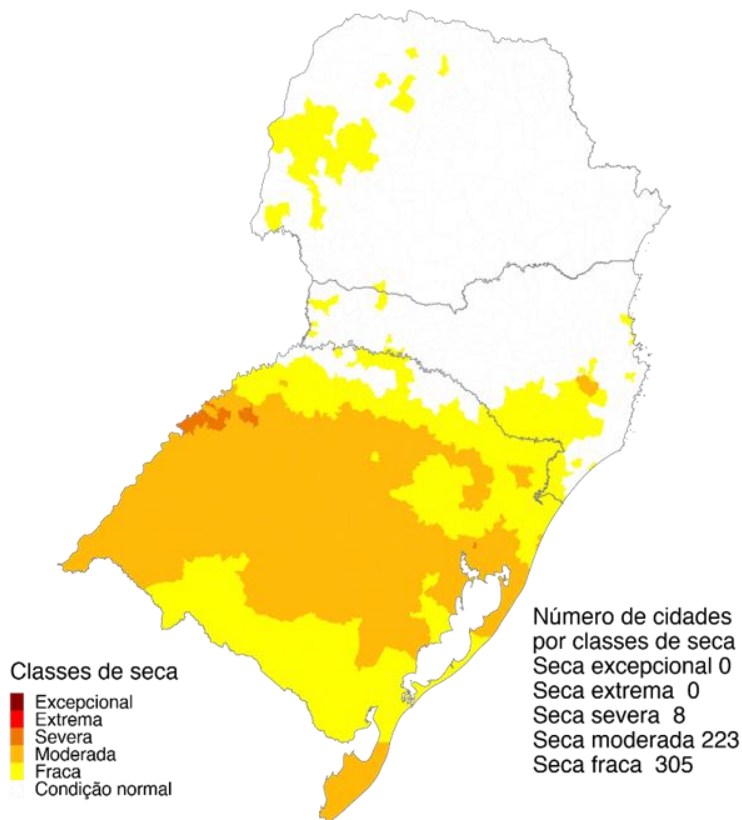


SPI24



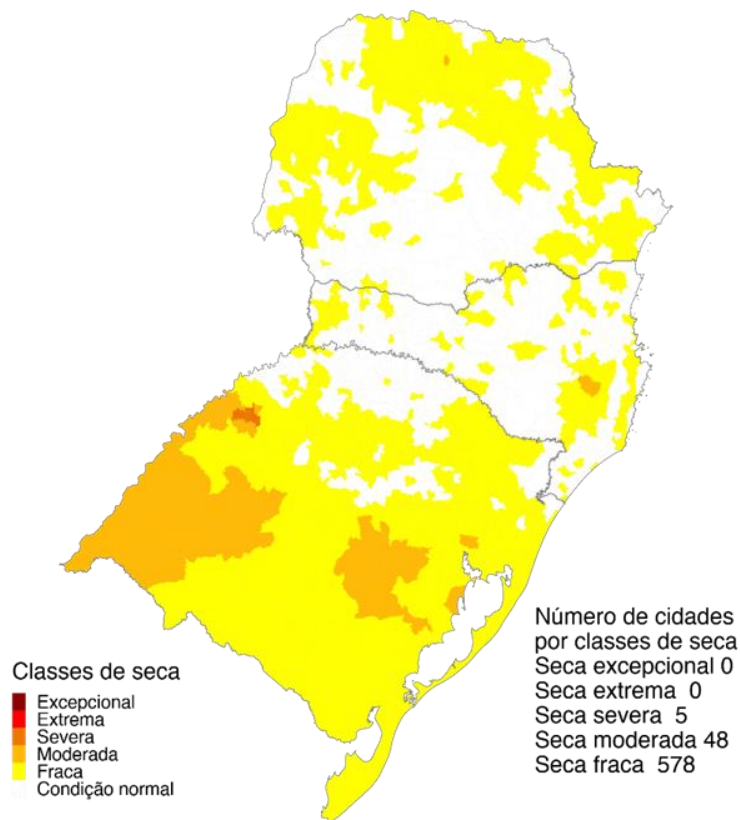
Índice Integrado de Seca – IIS nas escalas de 3 e 6 meses

IIS3



Setembro 2022
Índice Integrado de Seca (SPI3, VHI, US)
Dados: CPTEC/INPE - NOAA - NASA / Preparação: Cemaden/MCTI

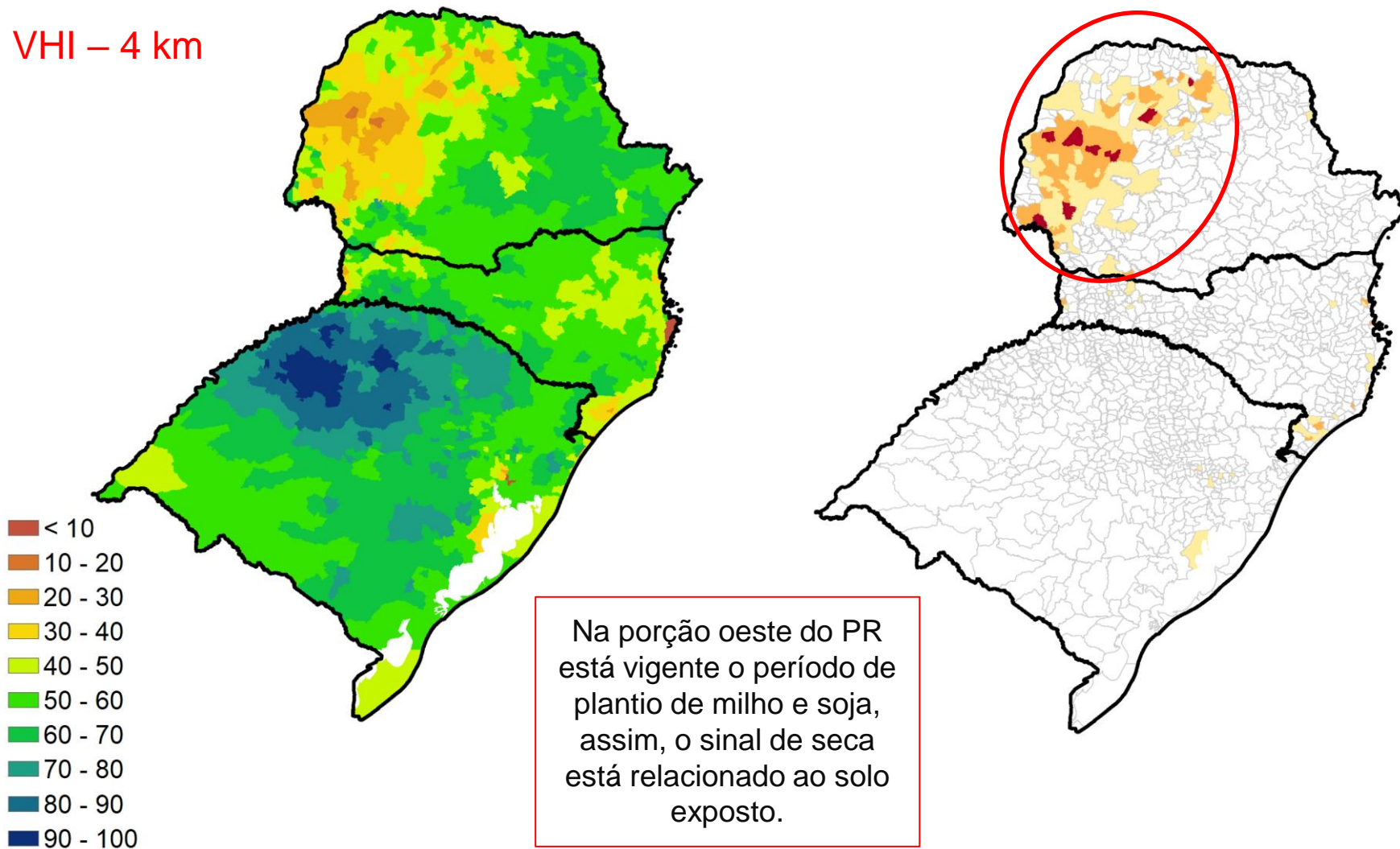
IIS6



Setembro 2022
Índice Integrado de Seca (SPI6, VHI, US)
Dados: CPTEC/INPE - NOAA - NASA / Preparação: Cemaden/MCTI

Áreas Agroprodutivas afetadas pela seca – Região Sul: **14/10**

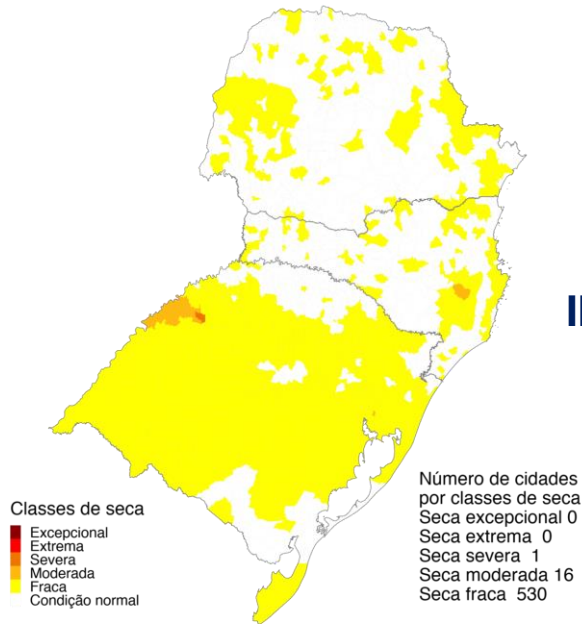
VHI – 4 km



*Estimativa a partir dos dados do Cadastro Ambiental Rural para minifúndios, pequenas e médias propriedades e VHI (Satélite)

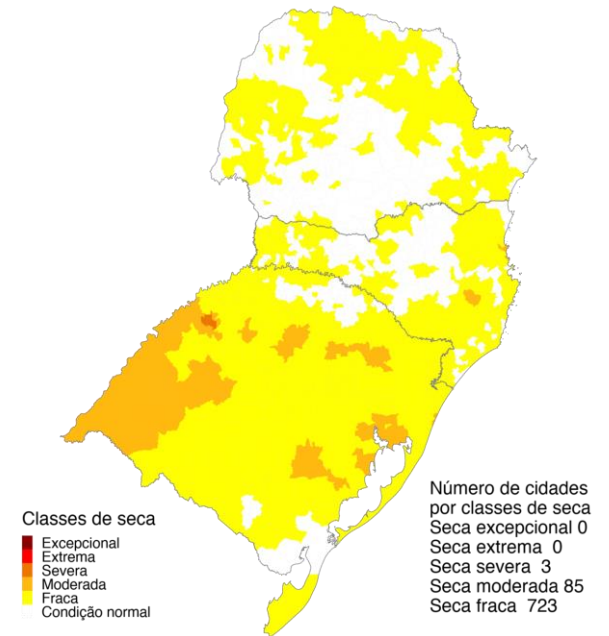
Cenários IIS: Região Sul: Outubro/22

Chuva 30% **ACIMA** da média



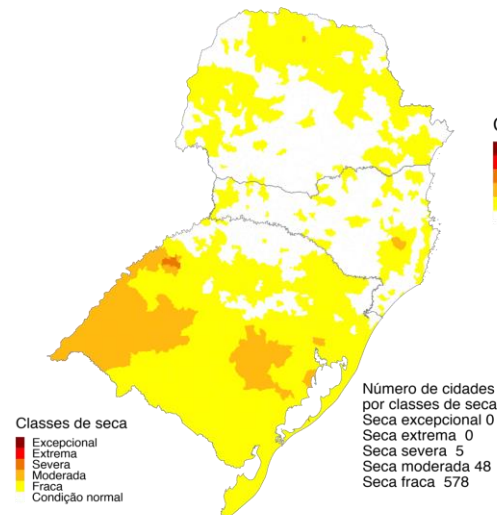
Setembro 2022
Índice Integrado de Seca (SPI6, VHI, US)
Cenário: Chuva + 30%
Dados: CPTEC/INPE - NOAA - NASA / Preparação: Cemaden/MCTI

Chuva 30% **ABAIXO** da média



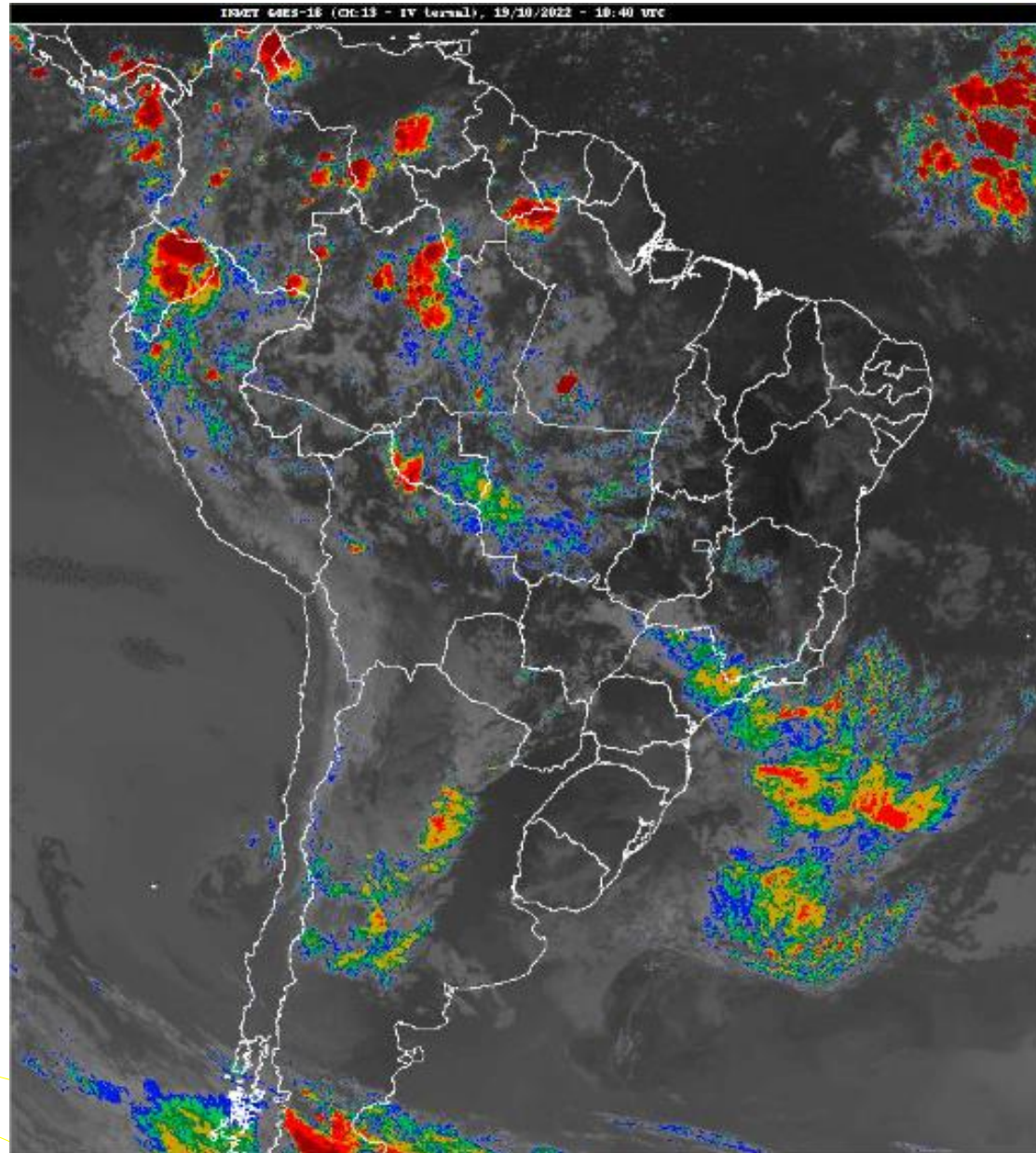
Setembro 2022
Índice Integrado de Seca (SPI6, VHI, AUS)
Cenário: Chuva - 30%
Dados: CPTEC/INPE - NOAA - NASA / Preparação: Cemaden/MCTI

IIS6 observado (19 de outubro)



Setembro 2022
Índice Integrado de Seca (SPI6, VHI, US)
Dados: CPTEC/INPE - NOAA - NASA / Preparação: Cemaden/MCTI

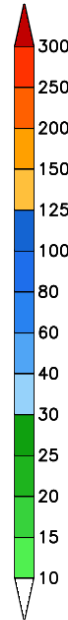
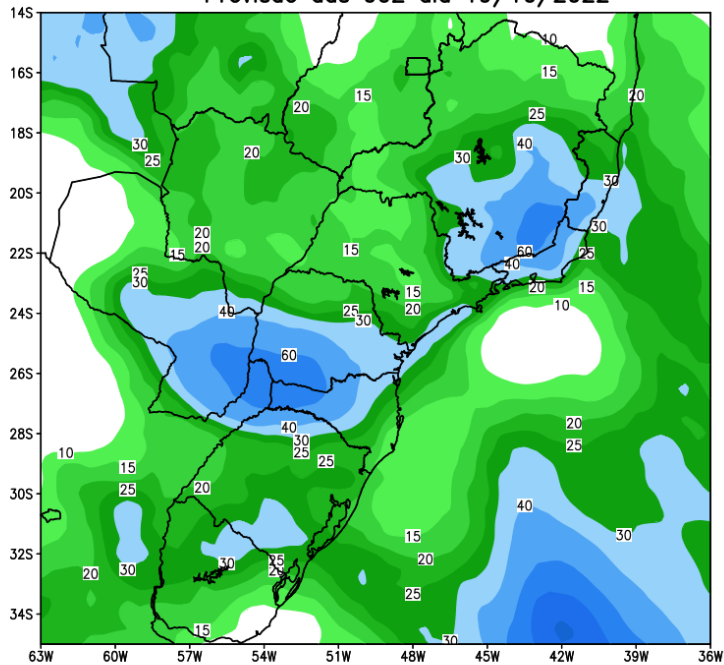
Situação meteorológica atual



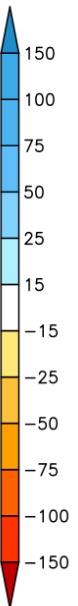
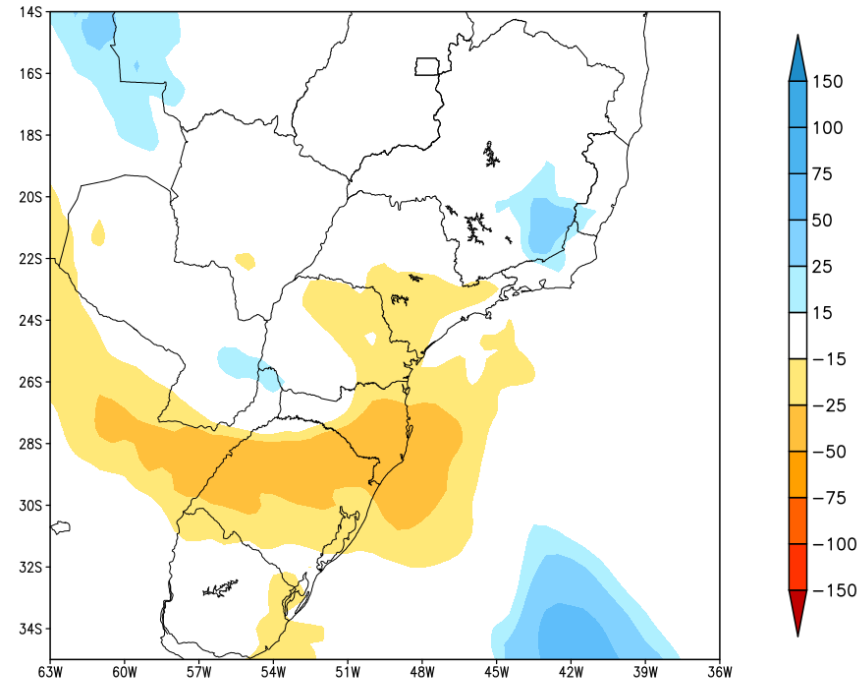
Fonte: INMET

Previsão de chuva próximos 7 dias

GEFS / BRASIL_SUL
Precipitação acumulada 1aSem (mm)
Previsão das 00Z dia 19/10/2022



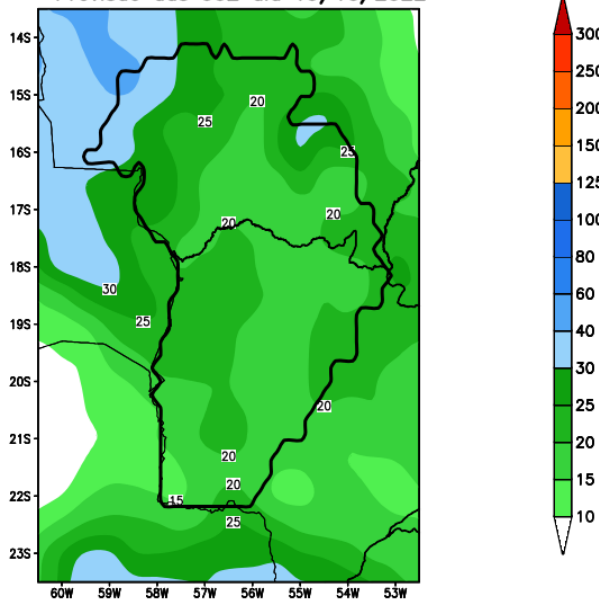
Anomalia de Precipitação BR_SUL (mm)
Período: 2022101900 a 2022102600



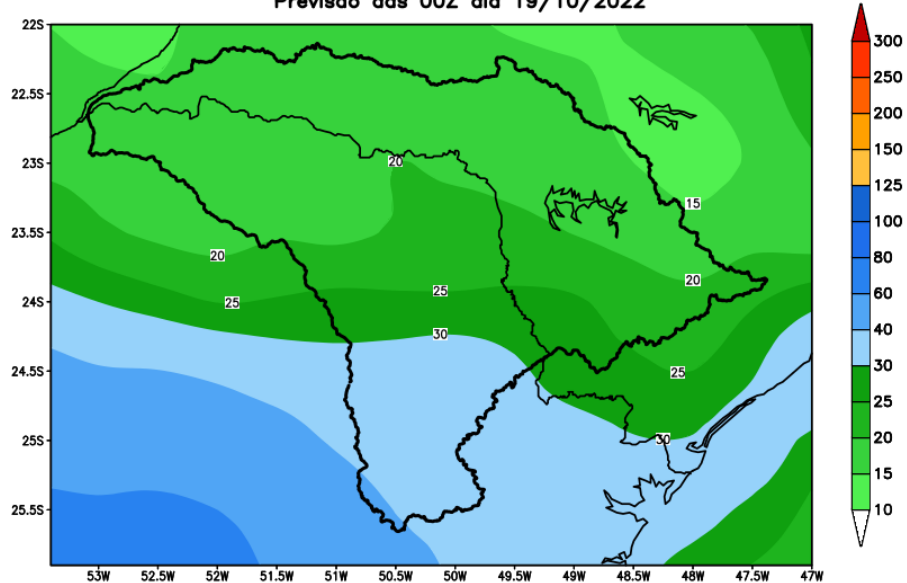
MODELO GFS

Previsão para as principais bacias

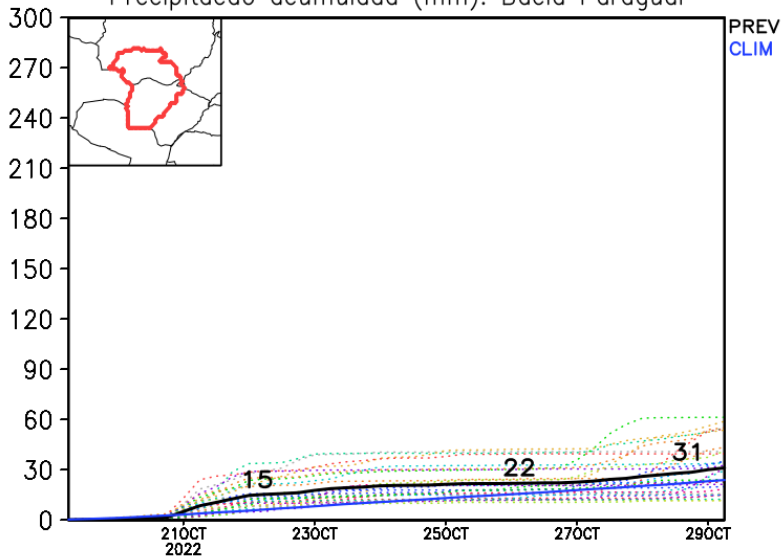
GEFS / Bacia do Rio Paraguai
Precipitação acumulada em 7 dias (mm)
Previsão das 00Z dia 19/10/2022



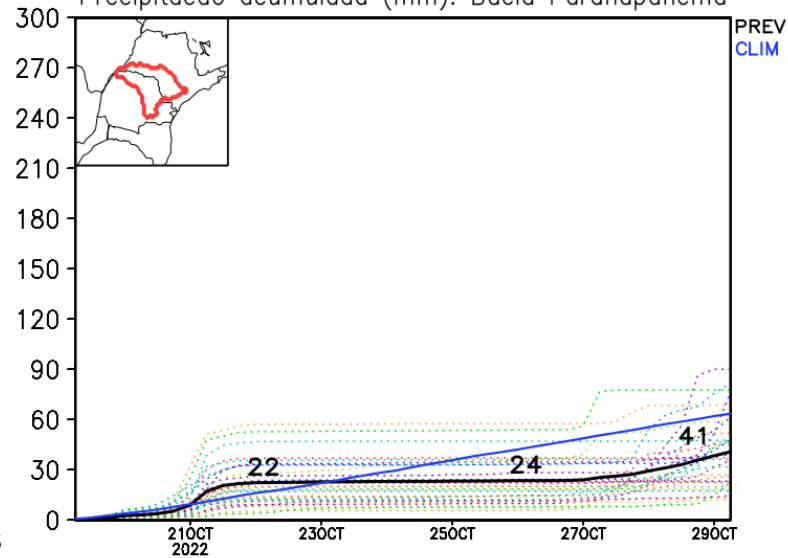
GEFS / Bacia do Rio Paranapanema
Precipitação acumulada em 7 dias (mm)
Previsão das 00Z dia 19/10/2022



Precipitação acumulada (mm): Bacia Paraguai

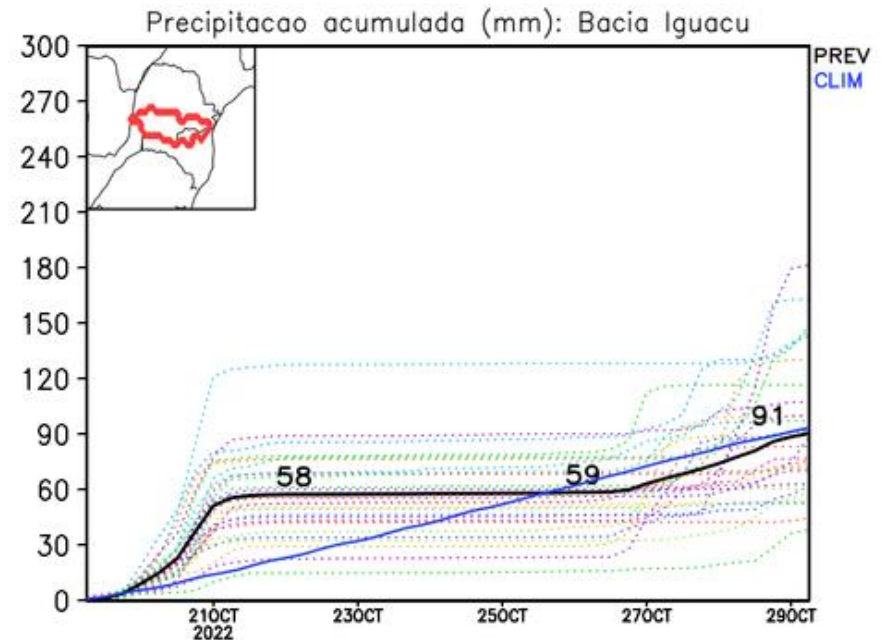
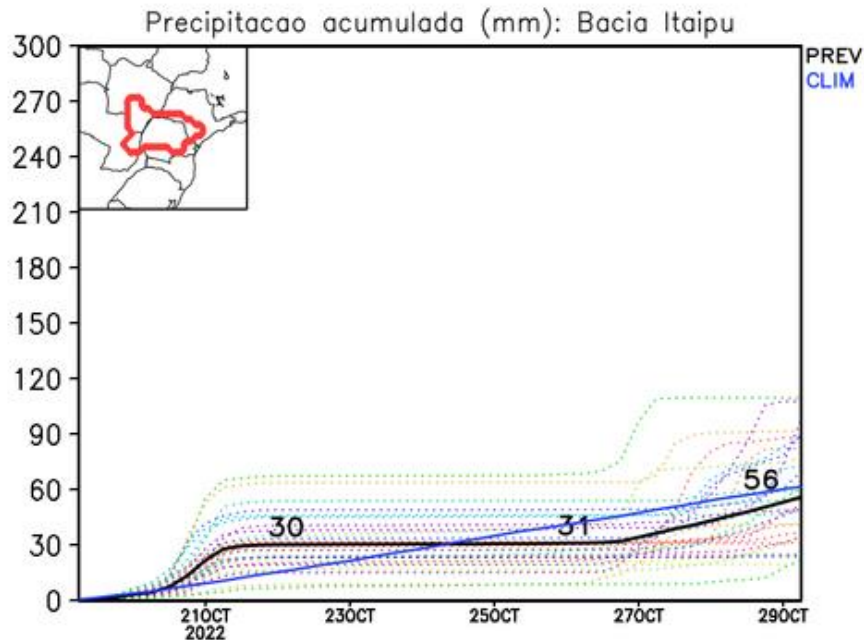
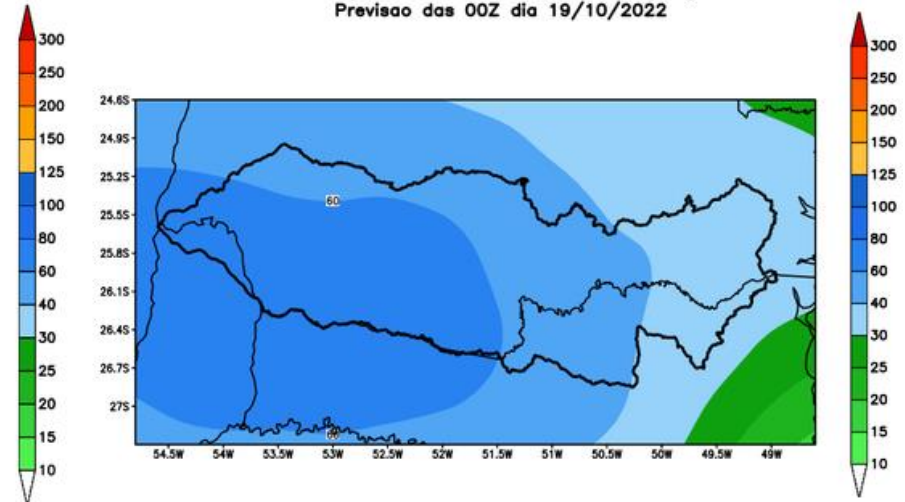
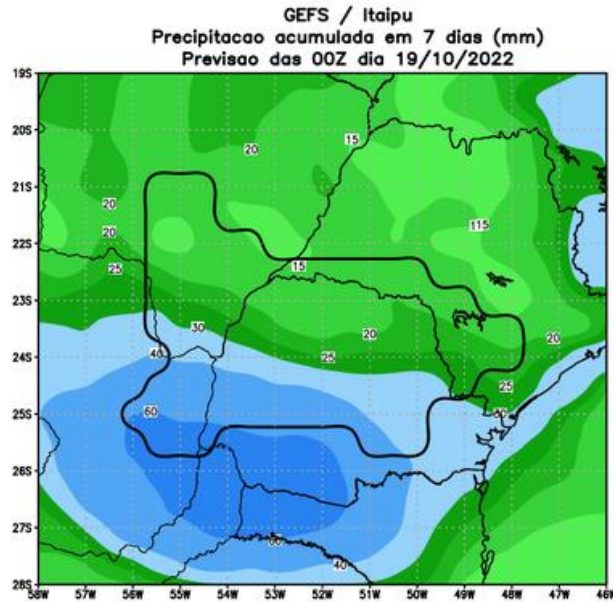


Precipitação acumulada (mm): Bacia Paranapanema

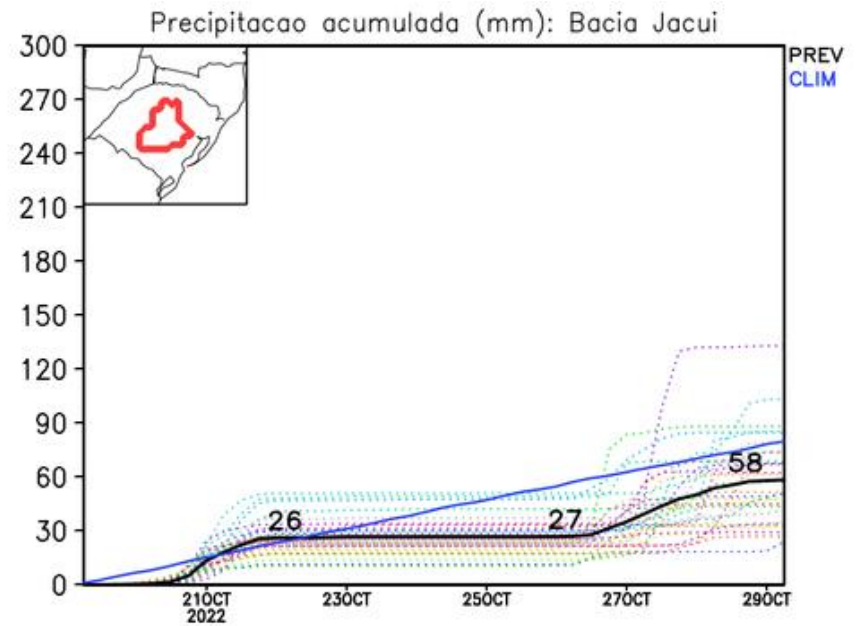
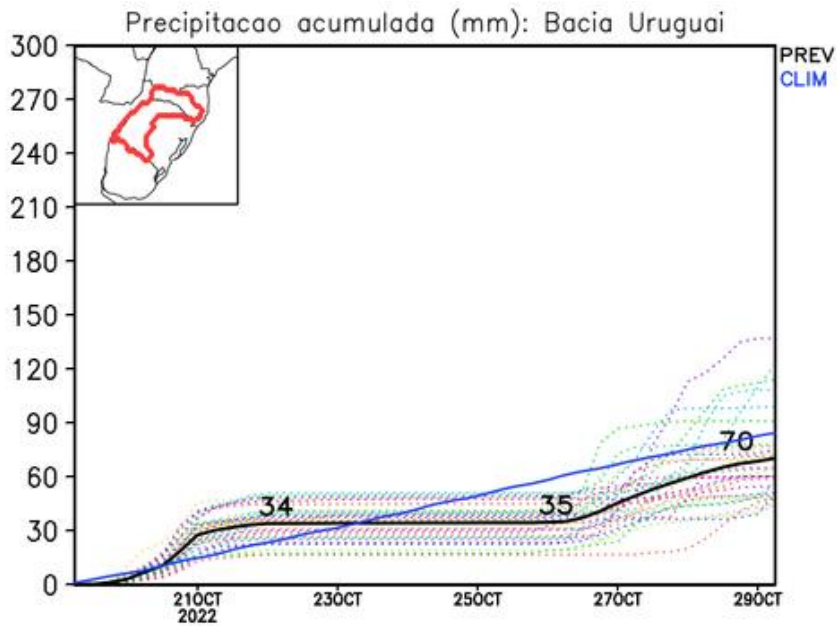
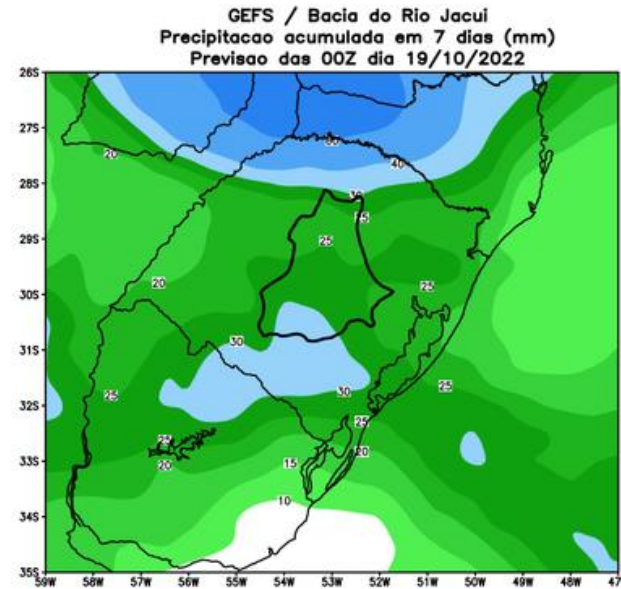
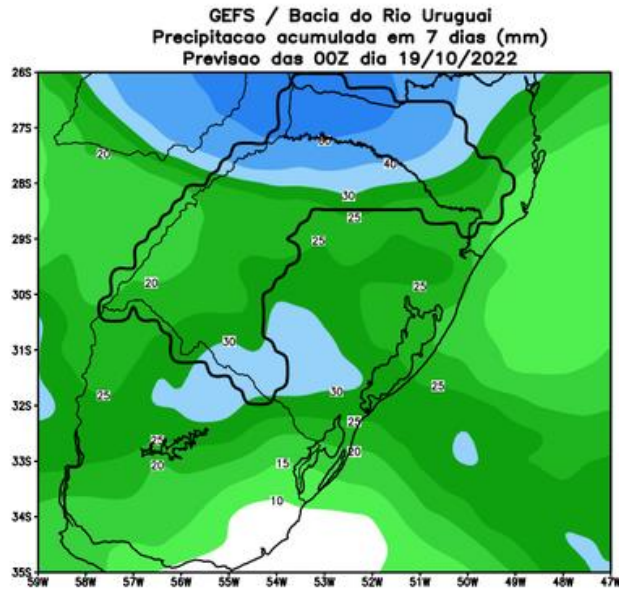


MODELO GFS

Previsão para as principais bacias

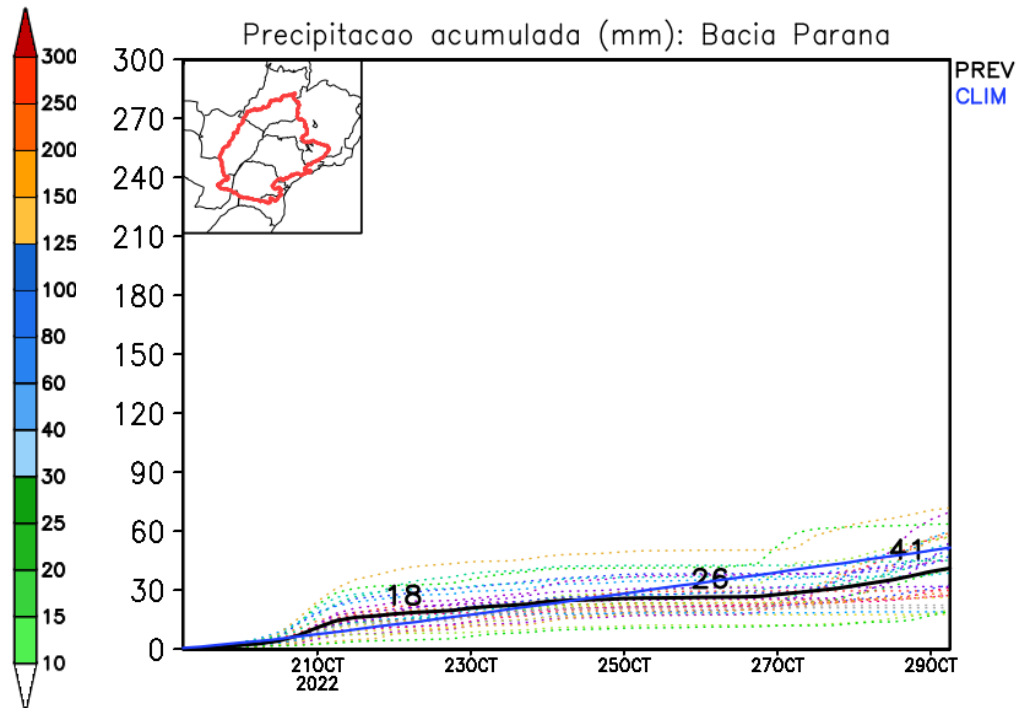
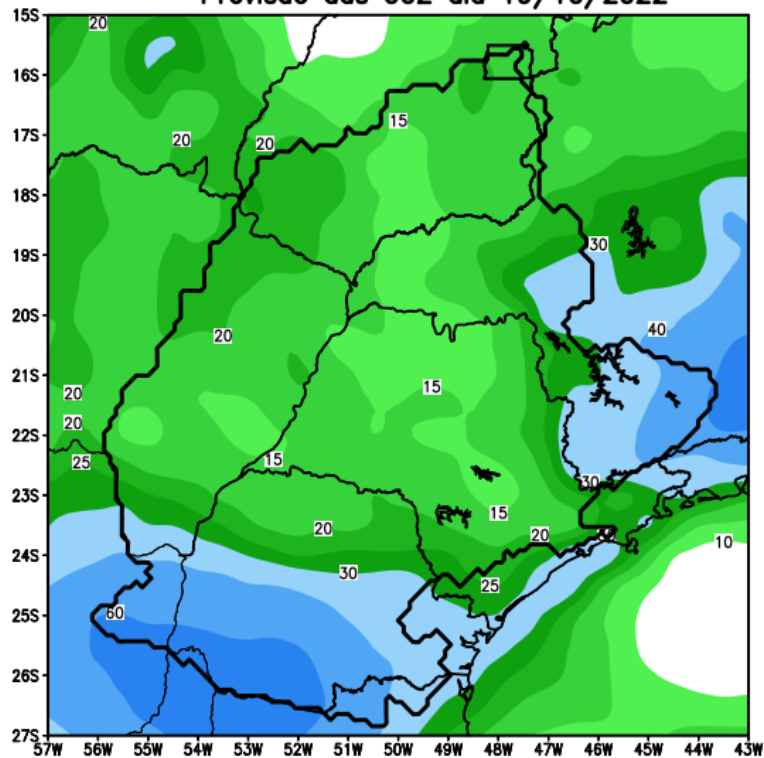


Previsão para as principais bacias



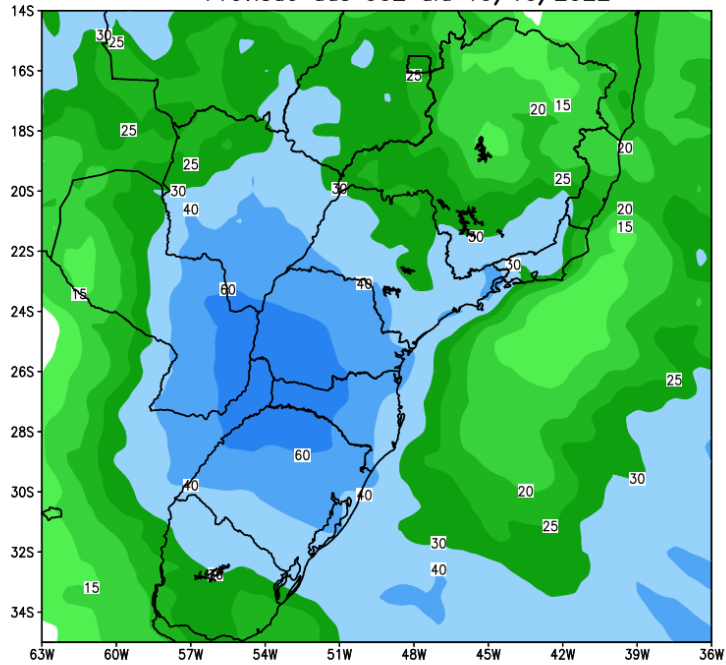
Previsão para as principais bacias

GEFS / Bacia do Parana
Precipitacao acumulada em 7 dias (mm)
Previsao das 00Z dia 19/10/2022

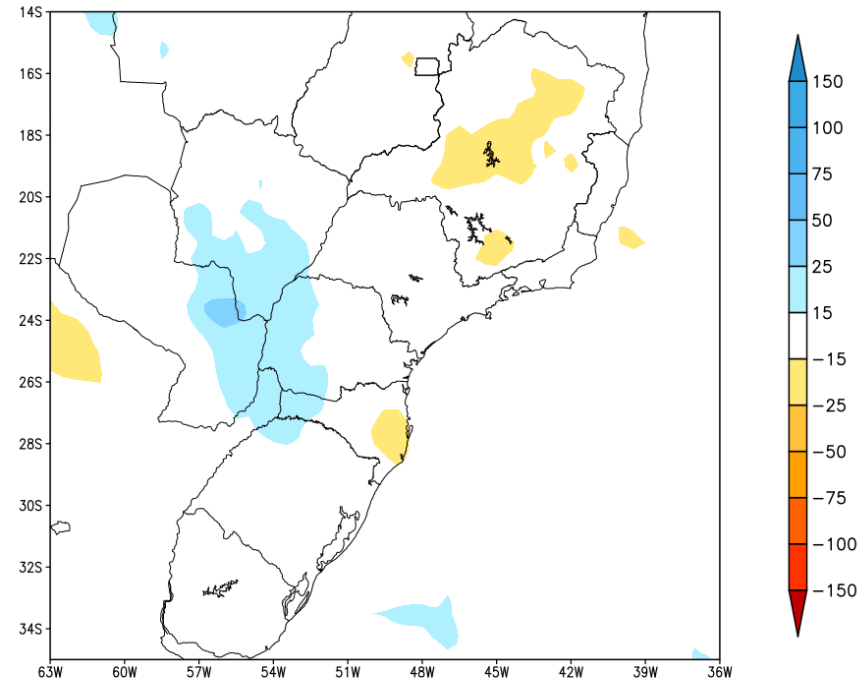


Tendência para a segunda semana

GEFS / BRASIL_SUL
Precipitacao acumulada 2aSem (mm)
Previsao das 00Z dia 19/10/2022



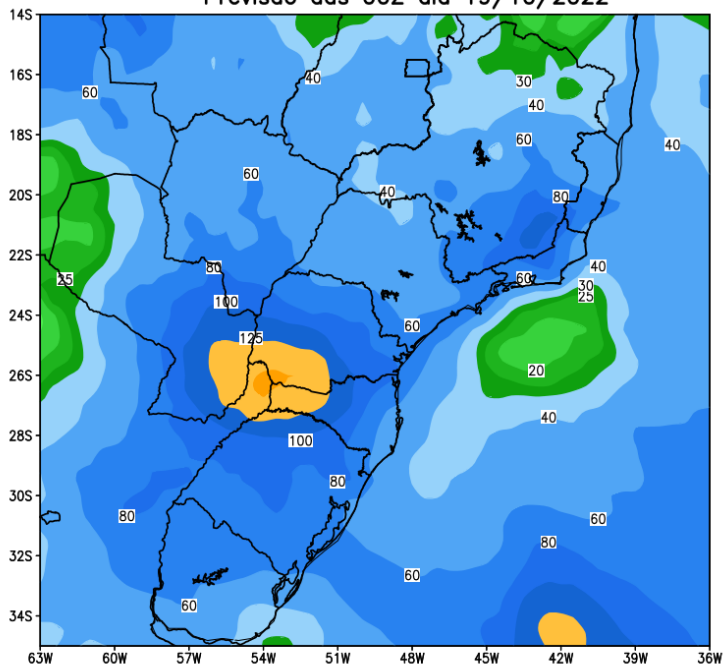
Anomalia de Precipitacao BR_SUL (mm)
Periodo: 2022102700 a 2022110200



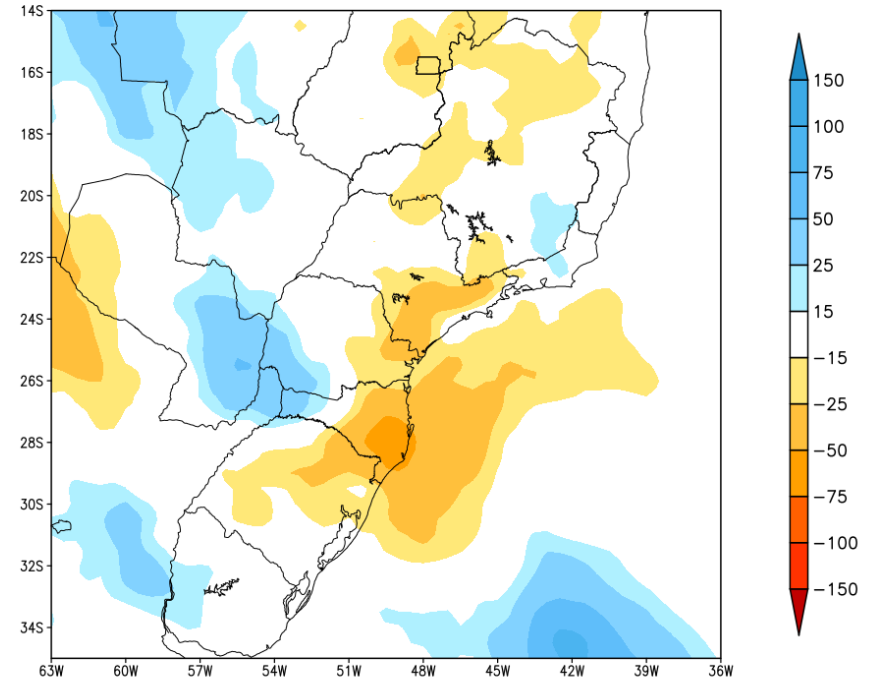
MODELO GFS

Tendência para as duas próximas semanas

GEFS / BRASIL_SUL
Precipitacao acumulada 14dias (mm)
Previsao das 00Z dia 19/10/2022



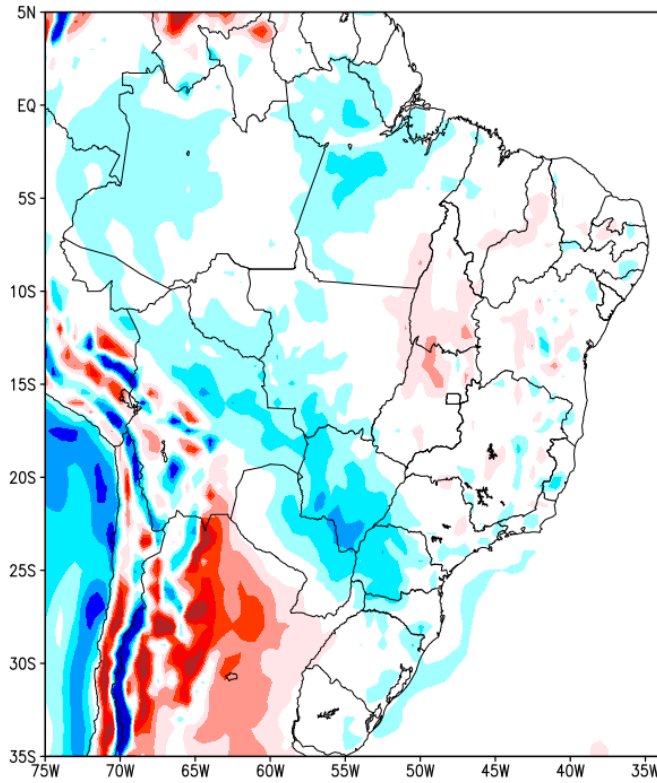
Anomalia de Precipitacao BR_SUL (mm)
Periodo: 2022101900 a 2022110200



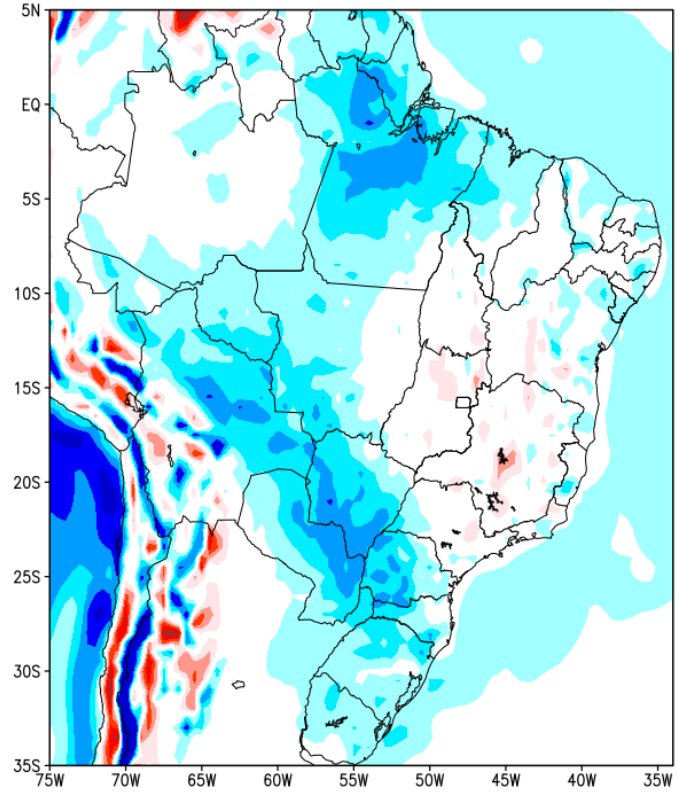
MODELO GFS

Previsão de Temperatura

Anomalia de Temperatura BR (C)
Período: 2022101900 a 2022102600



Anomalia de Temperatura BR (C)
Período: 2022102700 a 2022110200

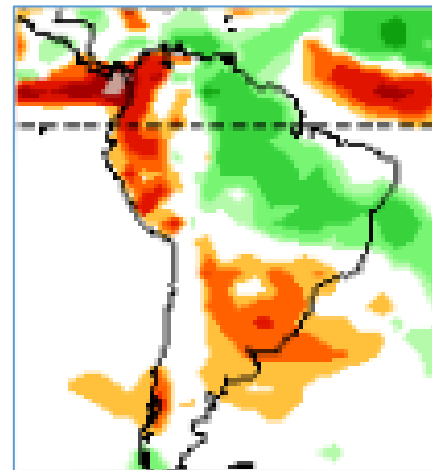
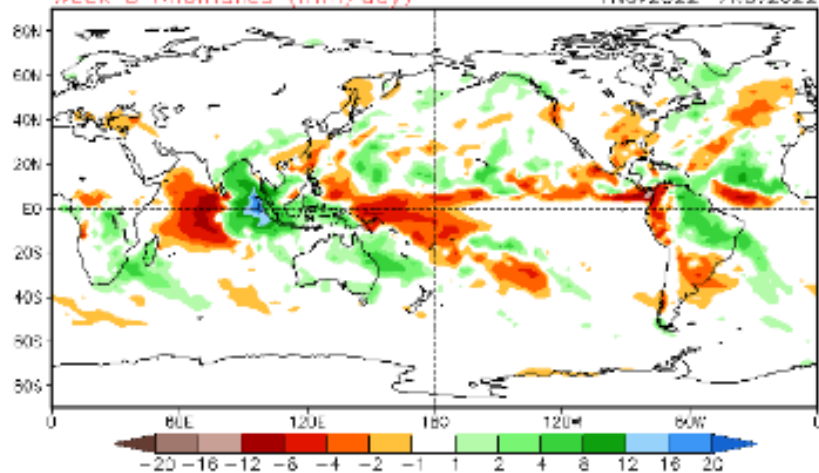


Tendência 3a e 4a semanas

16 Member Ensemble Mean Forecast from 17Oct2022

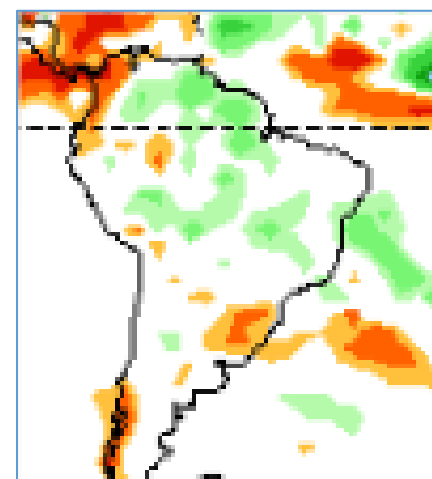
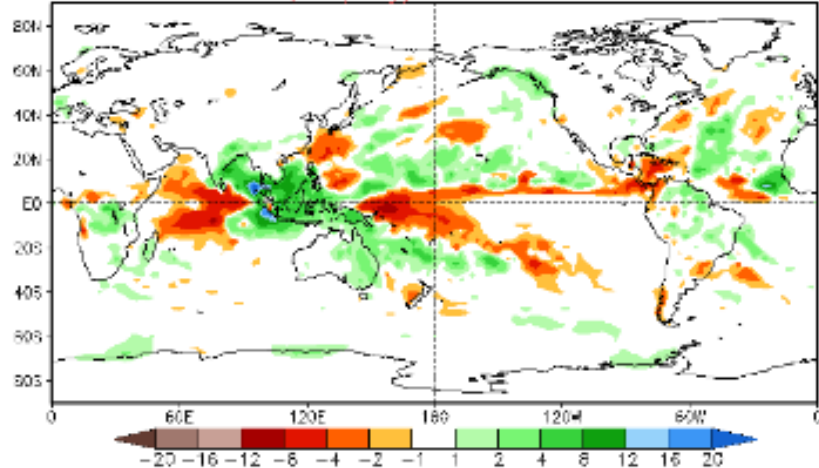
Week 3 Anomalies (mm/day)

1 Nov 2022 – 7 Nov 2022



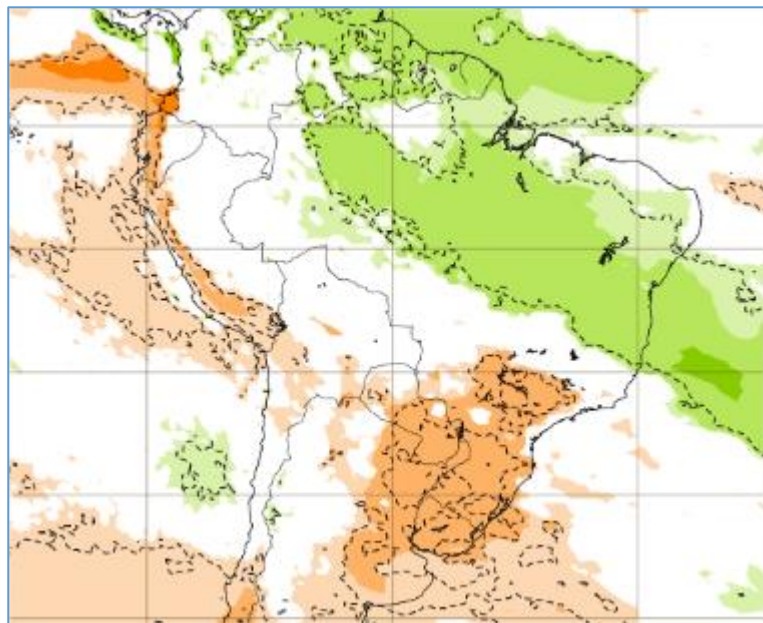
Week 4 Anomalies (mm/day)

8 Nov 2022 – 14 Nov 2022

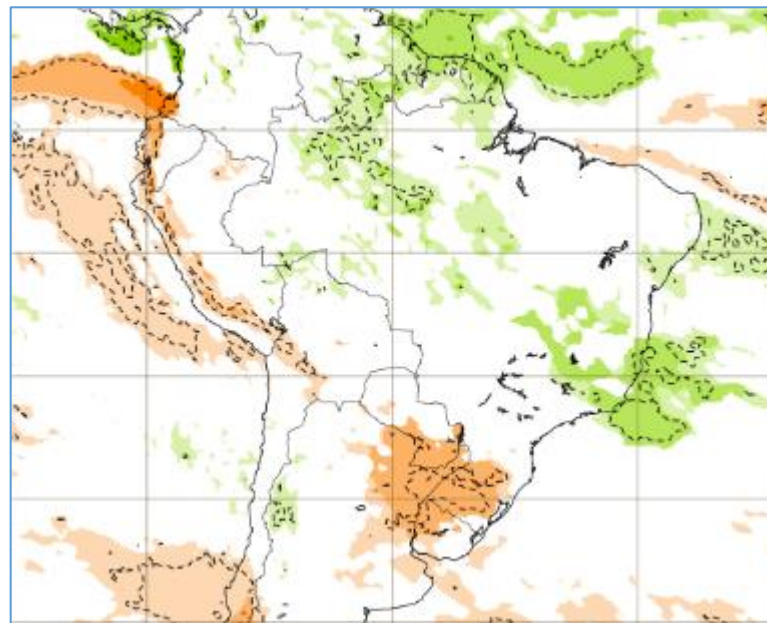


Tendência para 3ª e 4ª semanas

31/10-07/11

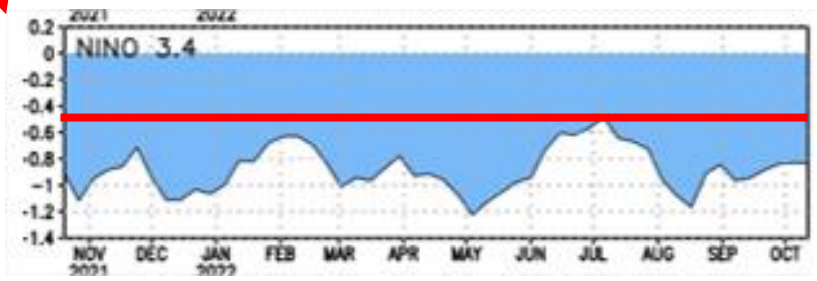
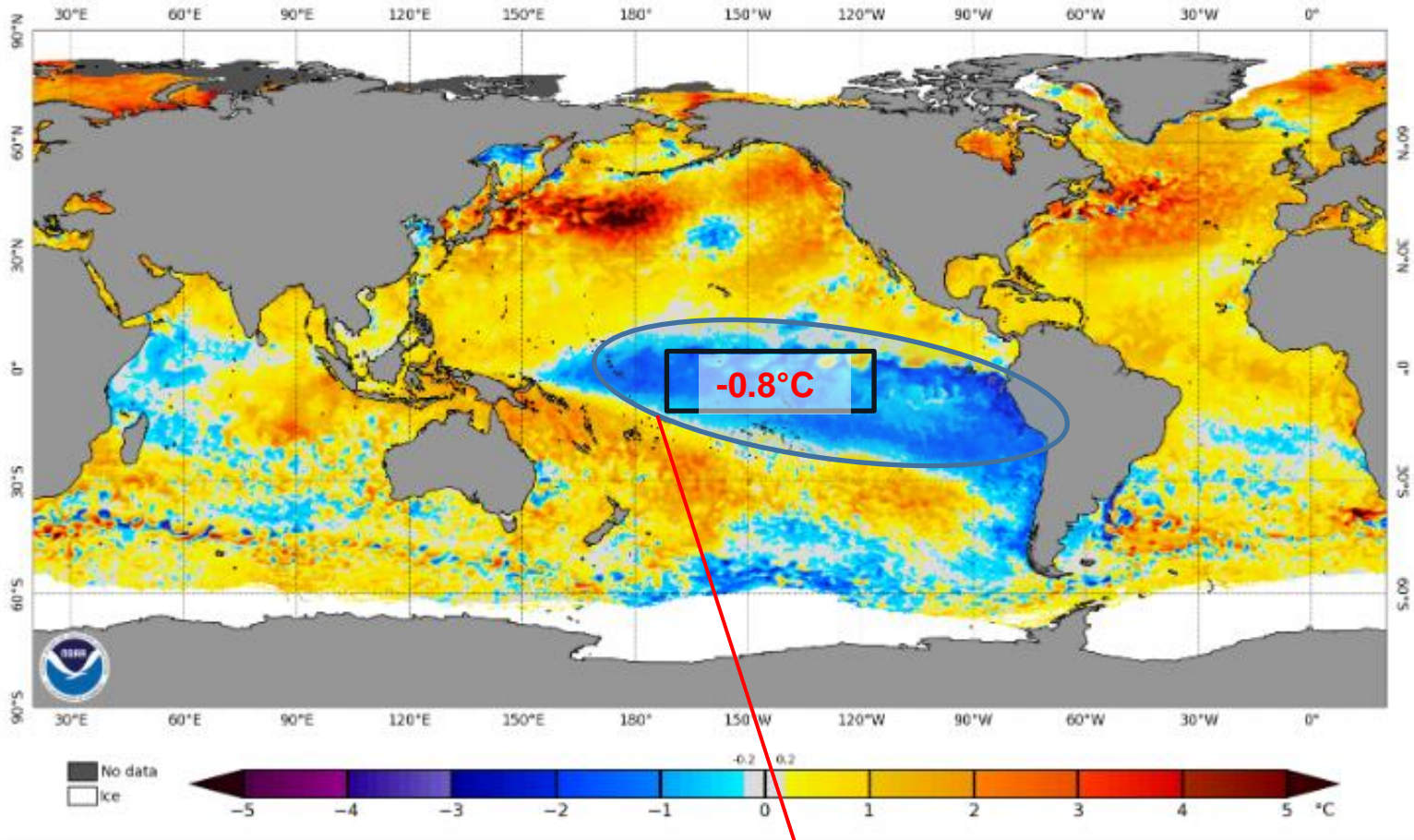


07-14/11

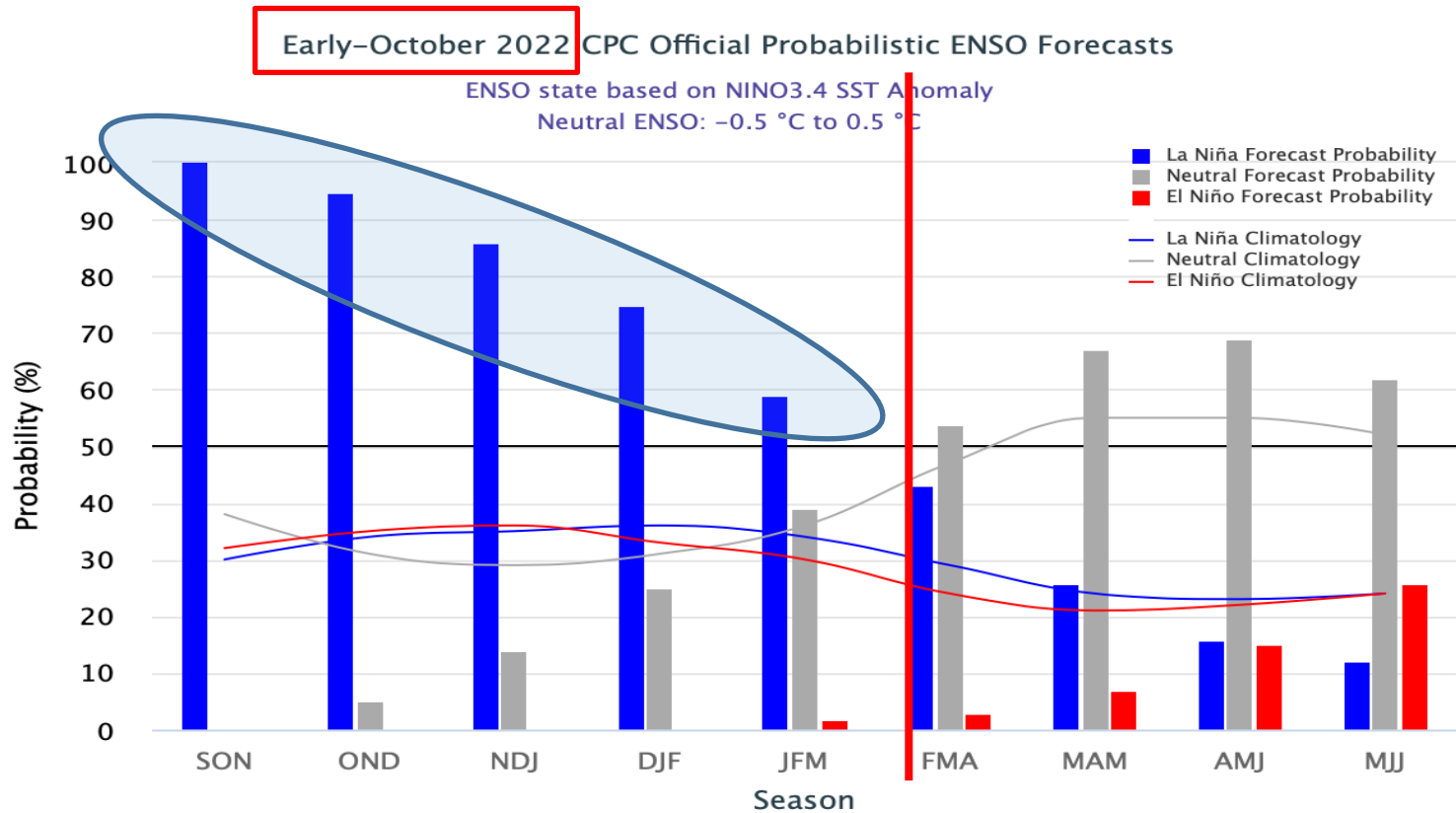


Status Atual: La Niña

NOAA Coral Reef Watch Daily 5km SST Anomalies (v3.1) 16 Oct 2022



Previsão do “La Niña”

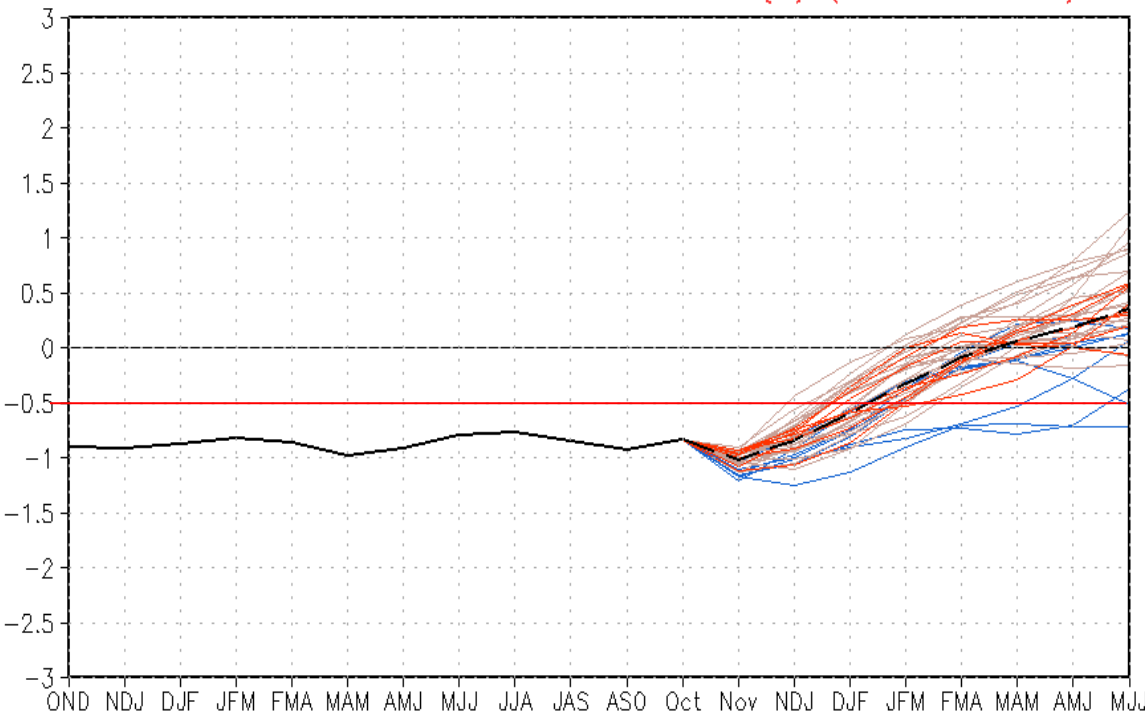


Status Atual: **La Niña**

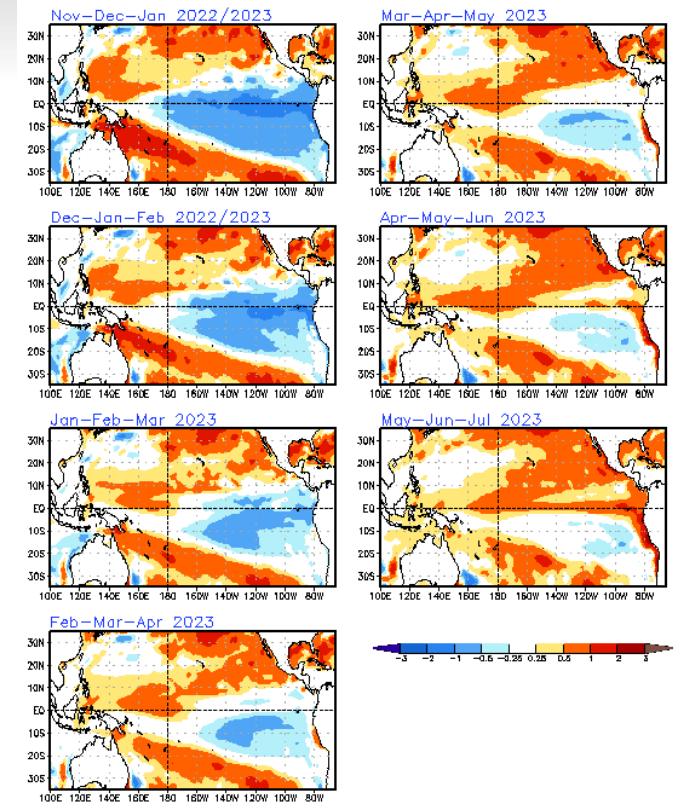
SST Outlook: NCEP CFS.v2 Forecast (PDF corrected)

Issued: 17 October 2022

CFSv2 forecast Nino3.4 SST anomalies (K) (PDF corrected)



- Latest 8 forecast members
 - Earliest 8 forecast members
 - Other forecast members
 - Forecast ensemble mean
 - NCEP Olv2.1 daily analysis
- (Climatology base period: 1991–2020)



Previsão sazonal de Chuva NDJ

