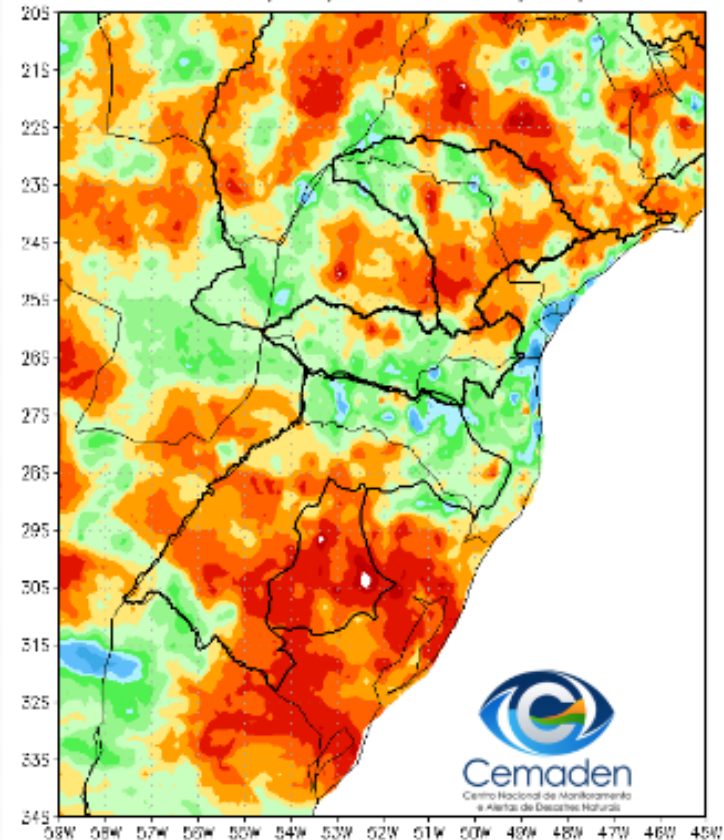


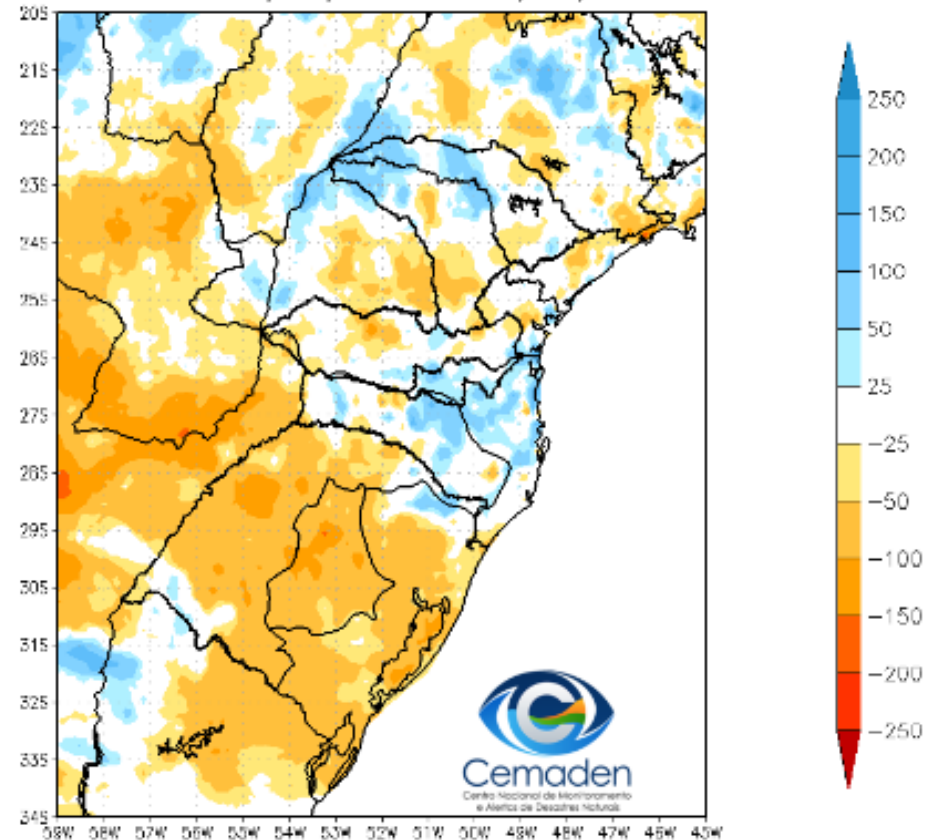
# Monitoramento da situação da seca na Região Sul

# Precipitação nos últimos 30 dias

Precipitação Acumulada (mm) A.S.  
Período: 19/03/2023 a 18/04/2023

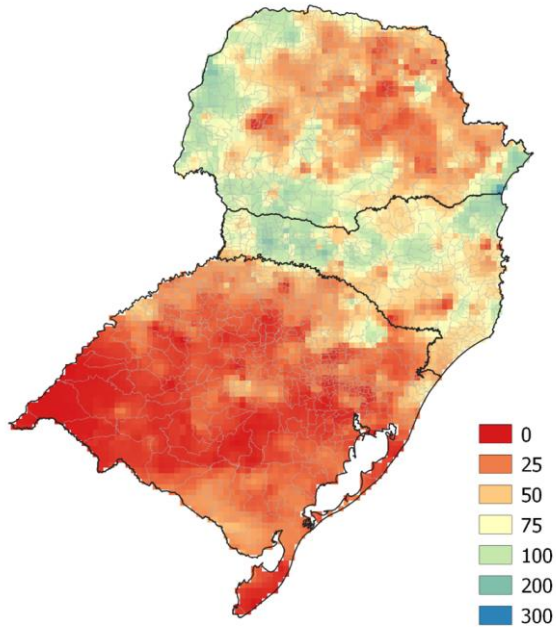


Anomalia de Precipitação (mm) A.S.  
Período: 19/03/2023 a 18/04/2023

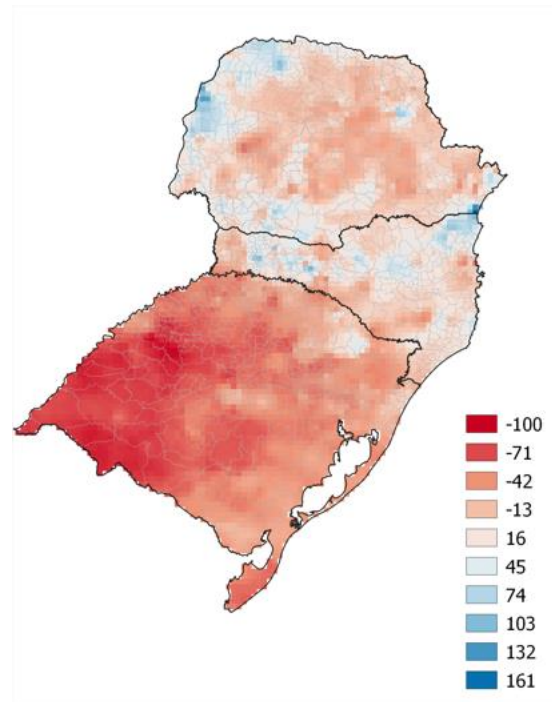


# PRECIPITAÇÃO: ABRIL 2023

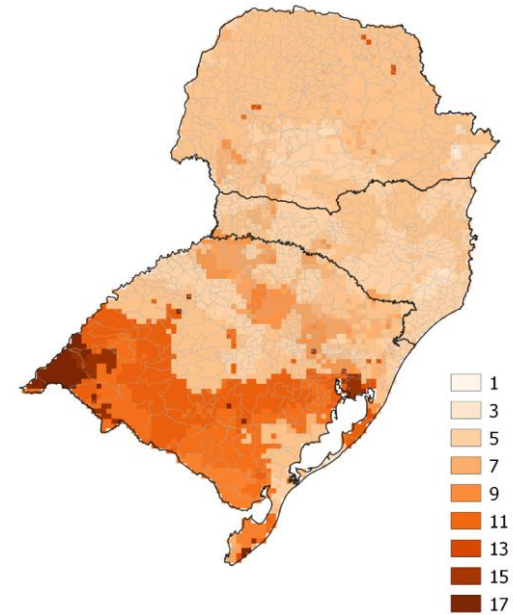
Chuva acumulada (mm)



Anomalia parcial (mm)

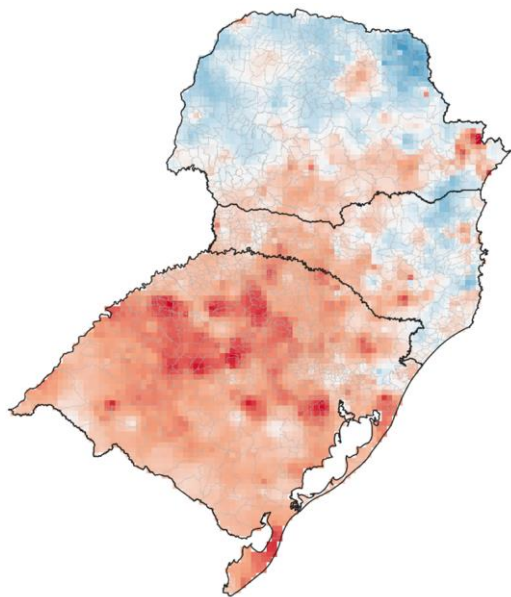


Máximo de dias consecutivos sem chuva

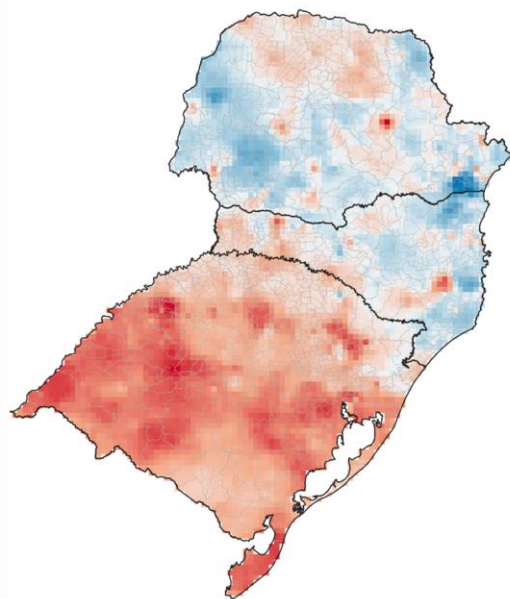


# SPI: ABRIL 2023

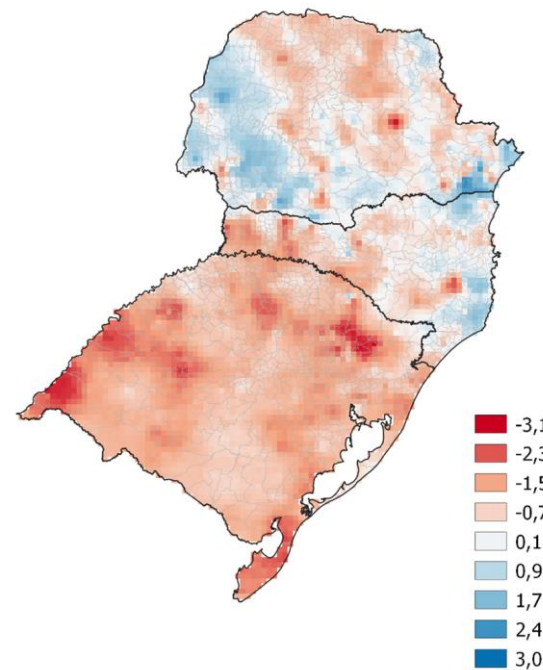
SPI03



SPI12



SPI24

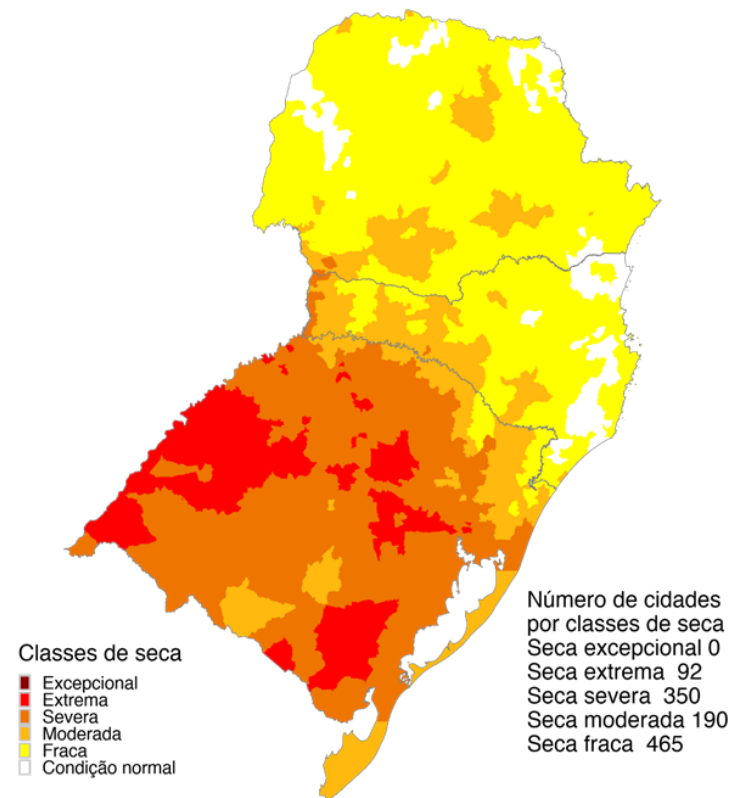
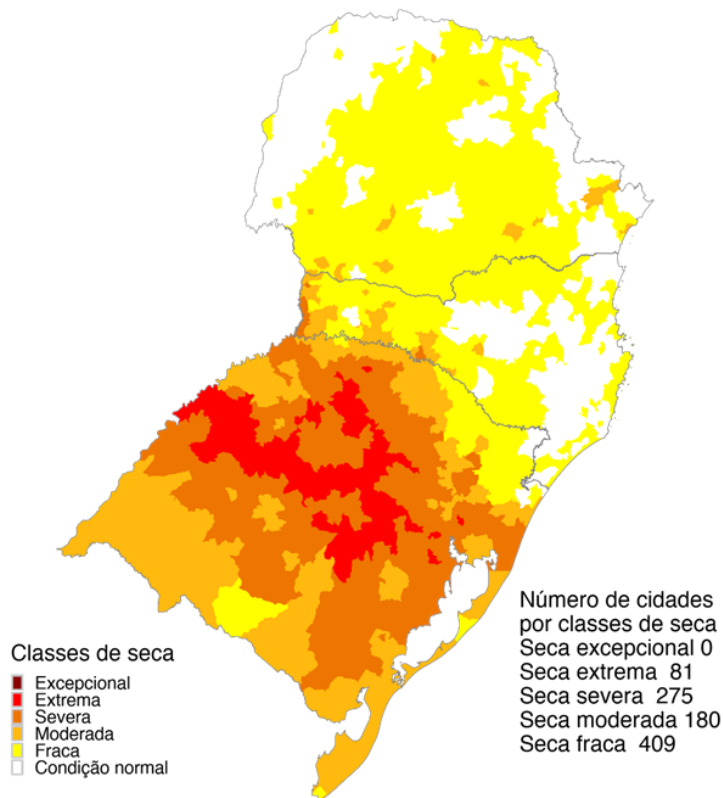


# ÍNDICE INTEGRADO DE SECA - IIS

(SPI3 E 6 + VHI + AUS): ABRIL/2023

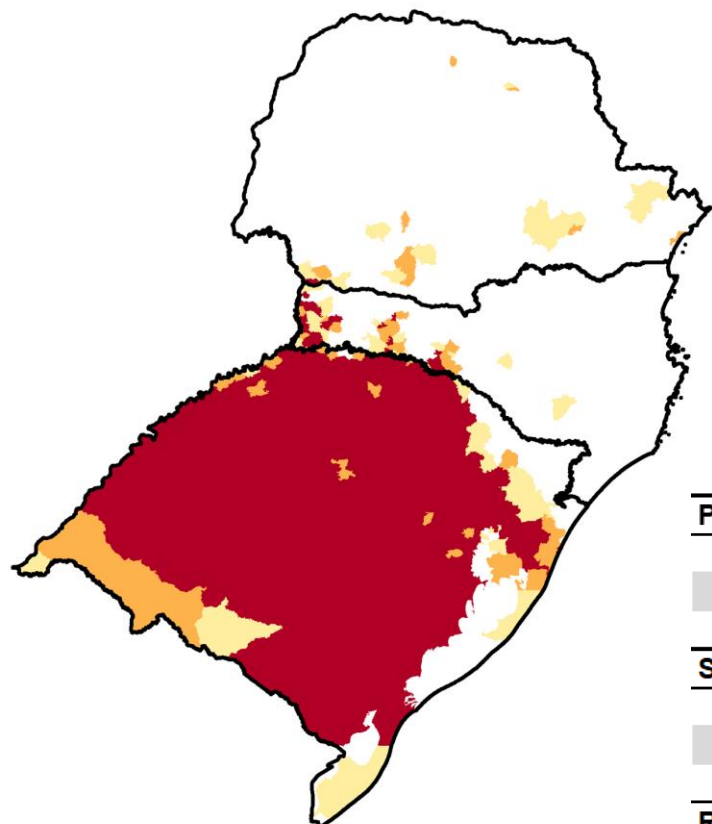
**IIS 3 MESES**

**IIS 6 MESES**



# ÁREAS DE PASTAGENS E AGRÍCOLAS AFETADAS PELA SECA

## ABR/23



UF	40 a 60%	60 - 80%	> 80%
PR	16	8	1
RS	14	26	429
SC	16	12	19

	40 a 60%	60 - 80%	> 80%	Imóveis Rurais Impactados > 40%
<b>Paraná</b>				
Minifundio	12413 (5%)	2381 (1%)	607 (*)	15401 (6%)
Pequena Propriedade	4885 (4%)	1512 (1%)	105 (*)	6502 (5%)
Media Propriedade	1067 (4%)	284 (1%)	12 (*)	1363 (5%)
<b>Santa Catarina</b>				
Minifundio	17563 (8%)	11316 (5%)	15579 (7%)	44458 (19%)
Pequena Propriedade	4214 (5%)	3044 (4%)	3044 (3%)	10001 (12%)
Media Propriedade	440 (4%)	149 (2%)	70 (1%)	659 (7%)
<b>Rio Grande do Sul</b>				
Minifundio	6574 (2%)	17879 (5%)	332748 (90%)	357201 (97%)
Pequena Propriedade	1743 (3%)	1572 (4%)	19977 (90%)	133612 (97%)
Media Propriedade	1743 (7%)	1572 (6%)	19977 (81%)	23292 (94%)

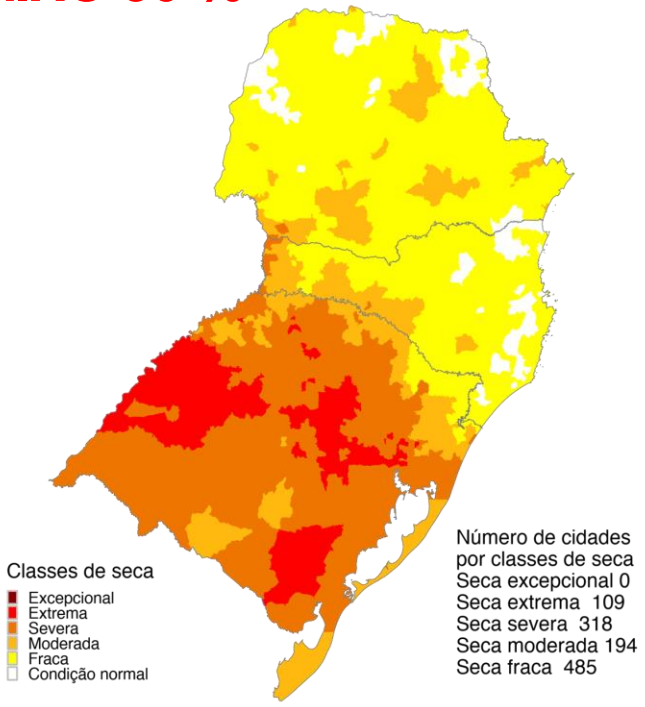
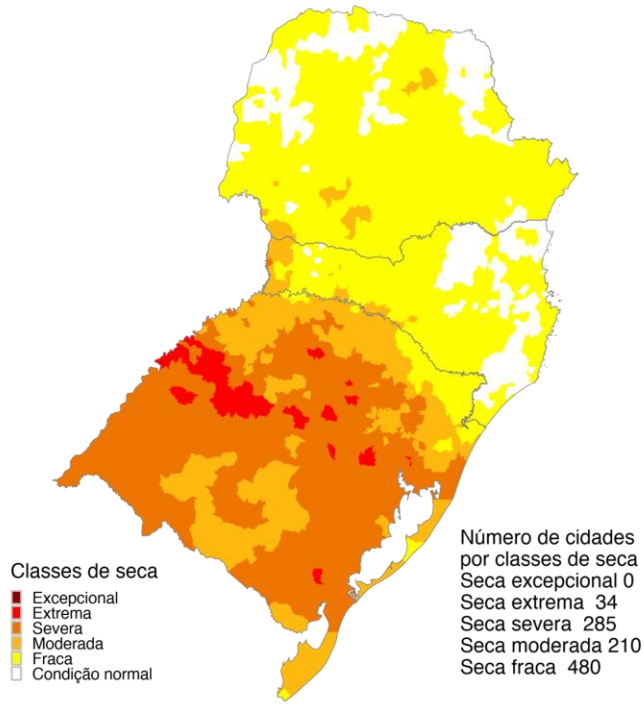
(\*) Percentagem inferior a 1%.

# CENÁRIOS ÍNDICE INTEGRADO DE SECA - IIS: MAIO/2023

**ACIMA 30 %**

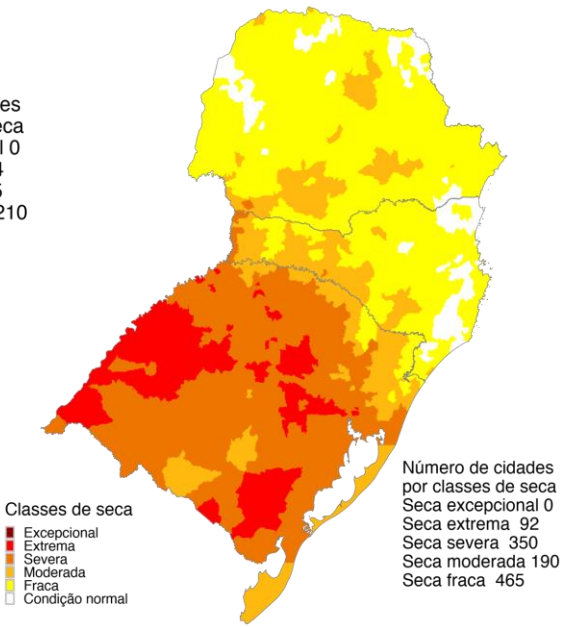
**ABAIXO 30 %**

**Abril/23**



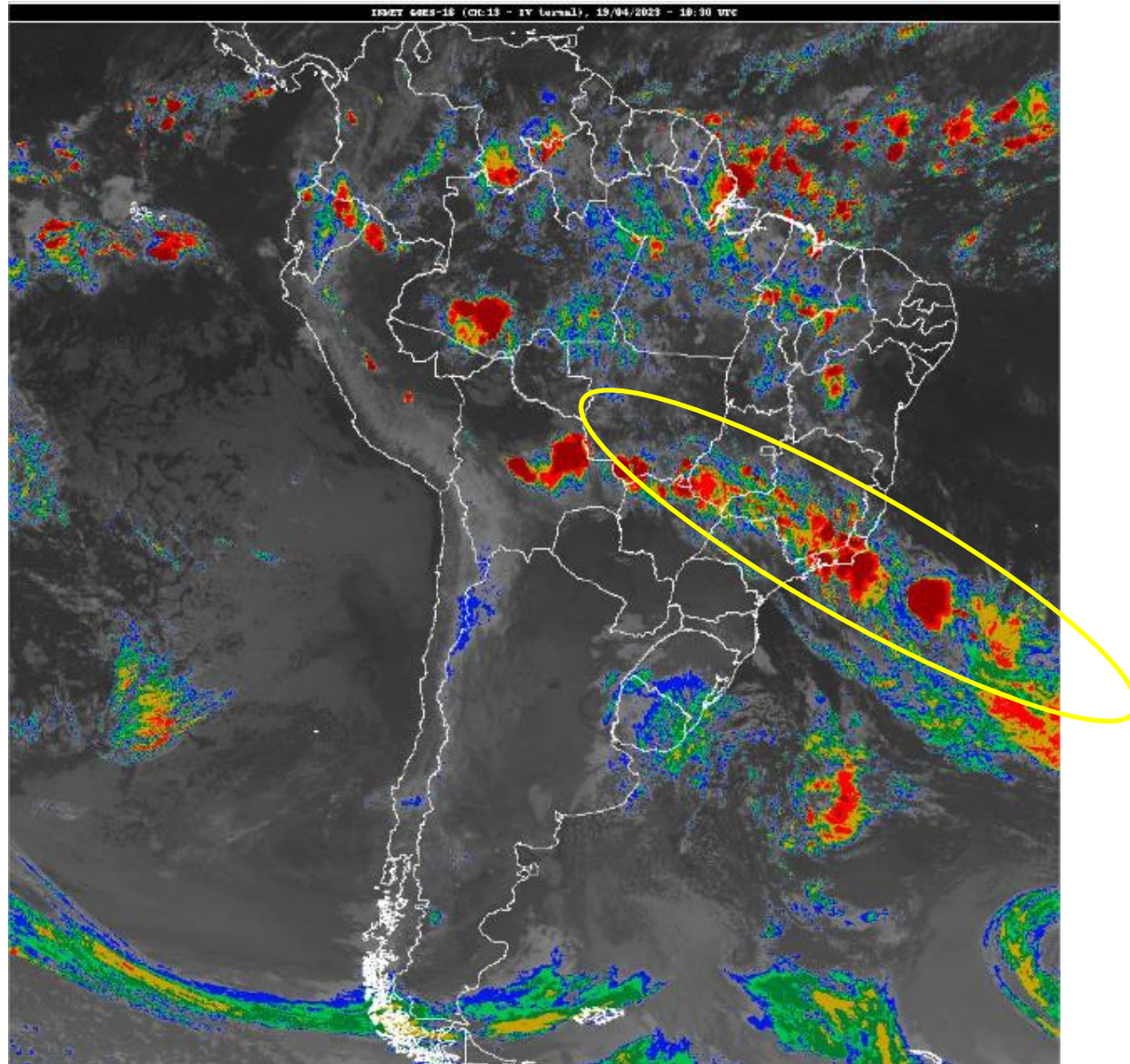
Abril 2023  
 Índice Integrado de Seca (SPI6, VHI, US)  
 Cenário: Chuva + 40%  
 Dados: CPTEC/INPE - NOAA - NASA / Preparação: Cemaden/MCTI

Abril 2023  
 Índice Integrado de Seca (SPI6, VHI, AUS)  
 Cenário: Chuva - 40%  
 Dados: CPTEC/INPE - NOAA - NASA / Preparação: Cemaden/MCTI



Abril 2023  
 Índice Integrado de Seca (SPI6, VHI, US)  
 Dados: CPTEC/INPE - NOAA - NASA / Preparação: Cemaden/MCTI

# Situação meteorológica atual



-25°

-35°

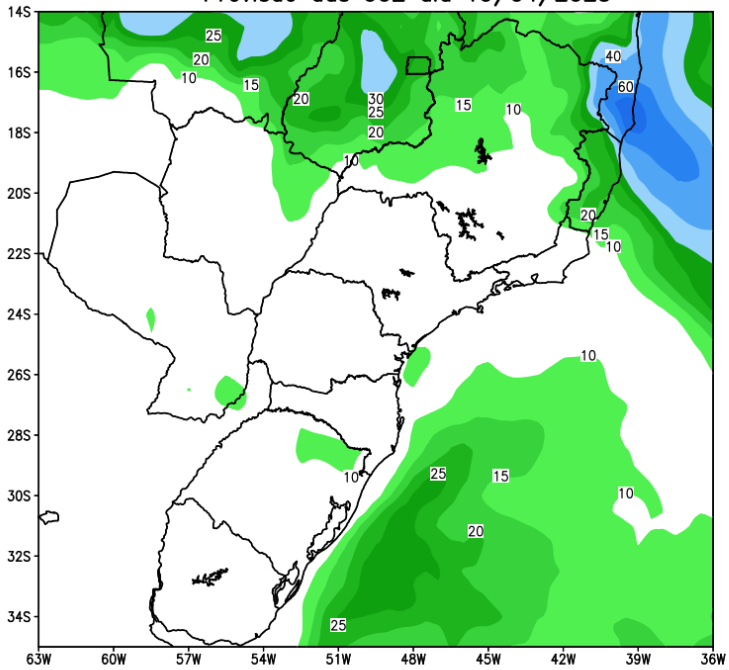
-45°

-55°

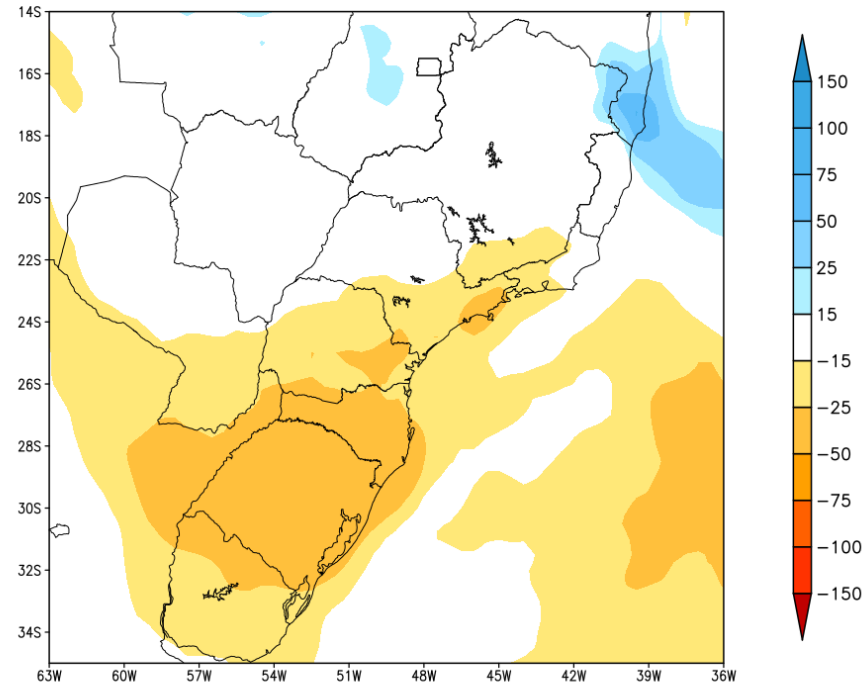


# Previsão de chuva próximos 7 dias

GEFS / BRASIL\_SUL  
Precipitacao acumulada 1aSem (mm)  
Previsao das 00Z dia 19/04/2023



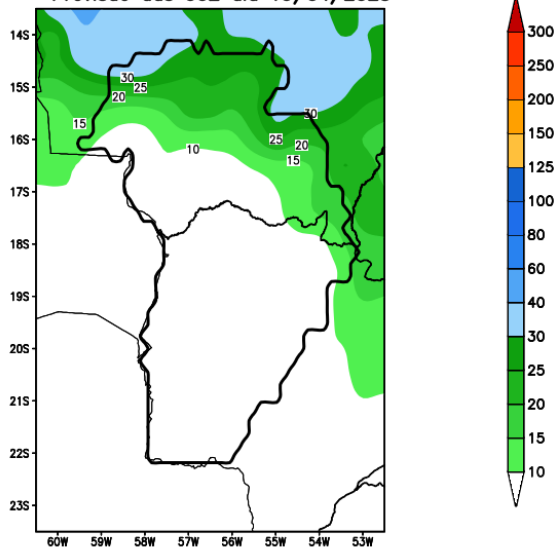
Anomalia de Precipitacao BR SUL (mm)  
Periodo: 2023041900 a 2023042600



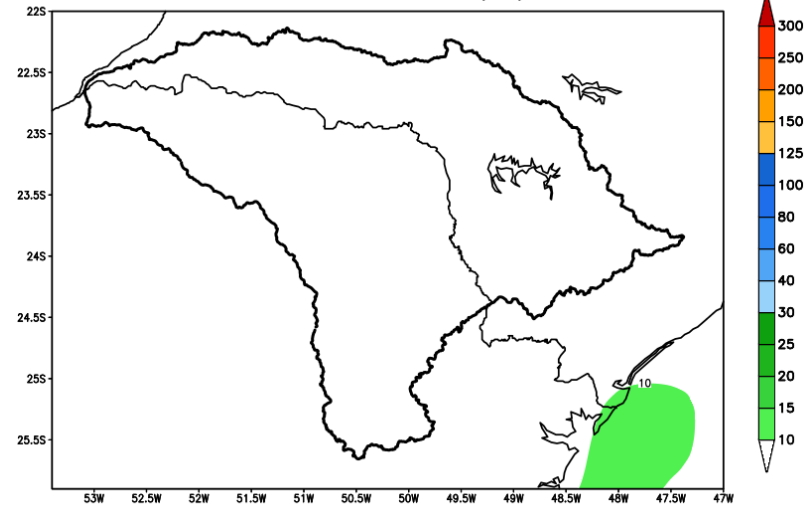
MODELO GFS

# Previsão para as principais bacias

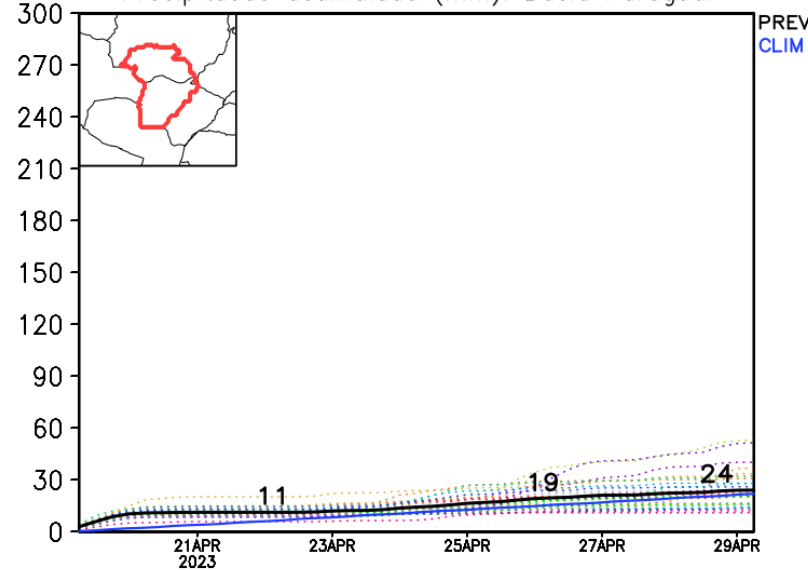
GEFS / Bacia do Rio Paraguai  
Precipitação acumulada em 7 dias (mm)  
Previsão das 00Z dia 19/04/2023



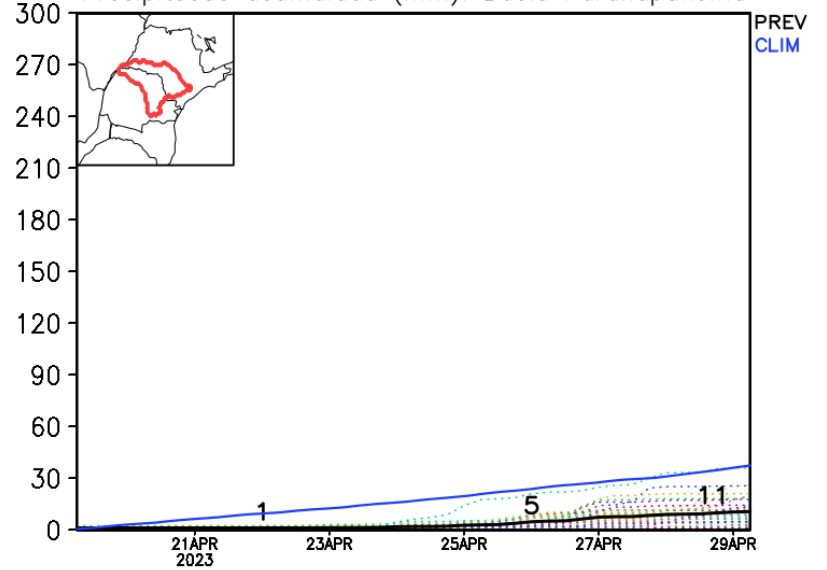
GEFS / Bacia do Rio Paranapanema  
Precipitação acumulada em 7 dias (mm)  
Previsão das 00Z dia 19/04/2023



Precipitação acumulada (mm): Bacia Paraguai



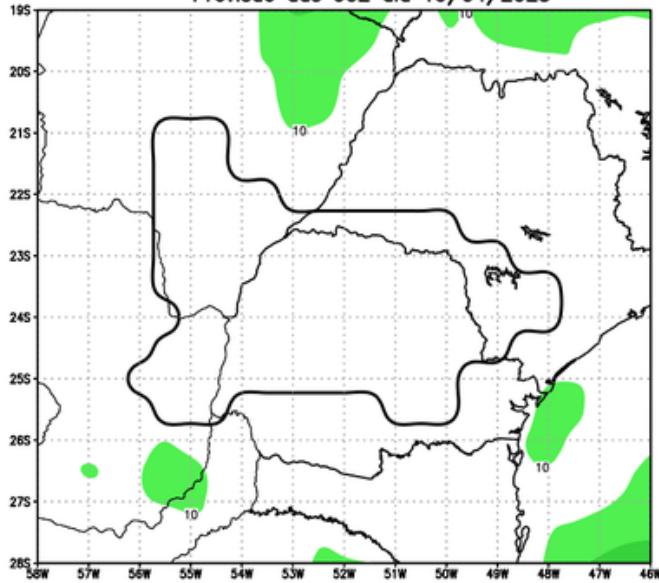
Precipitação acumulada (mm): Bacia Paranapanema



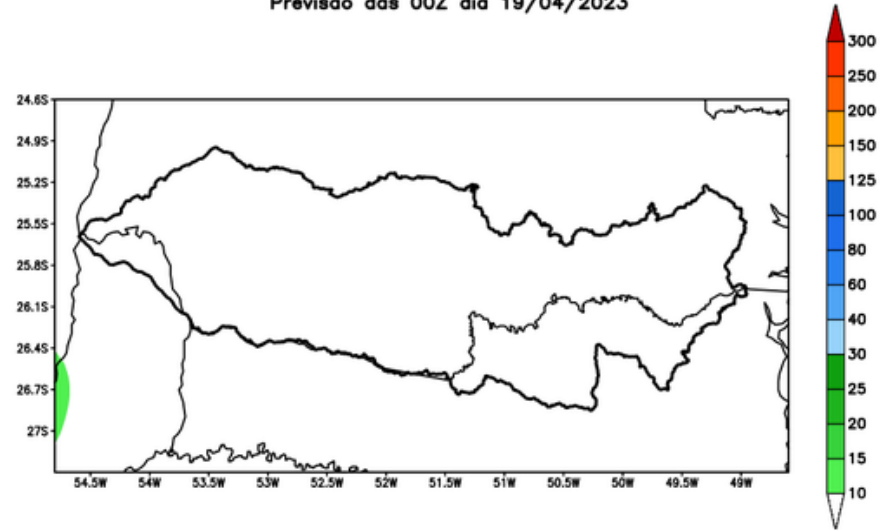
MODELO GFS

# Previsão para as principais bacias

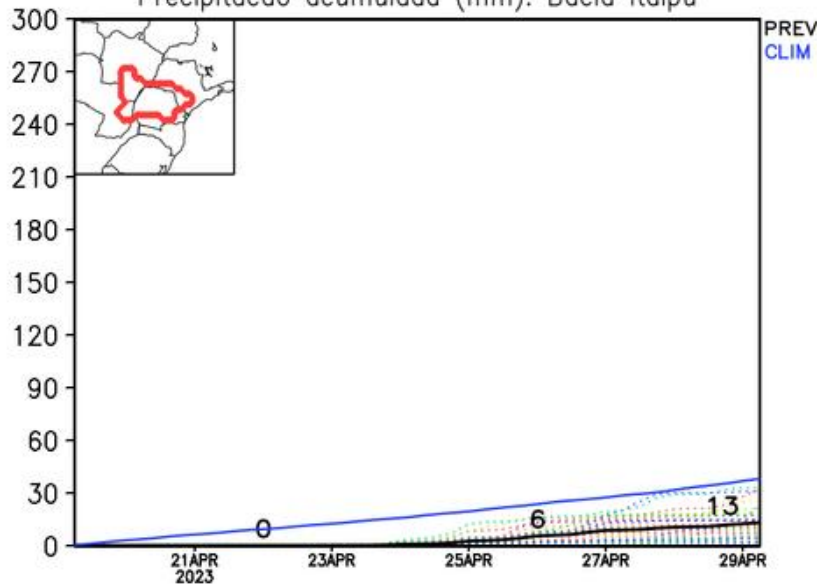
GEFS / Itaipu  
Precipitação acumulada em 7 dias (mm)  
Previsão das 00Z dia 19/04/2023



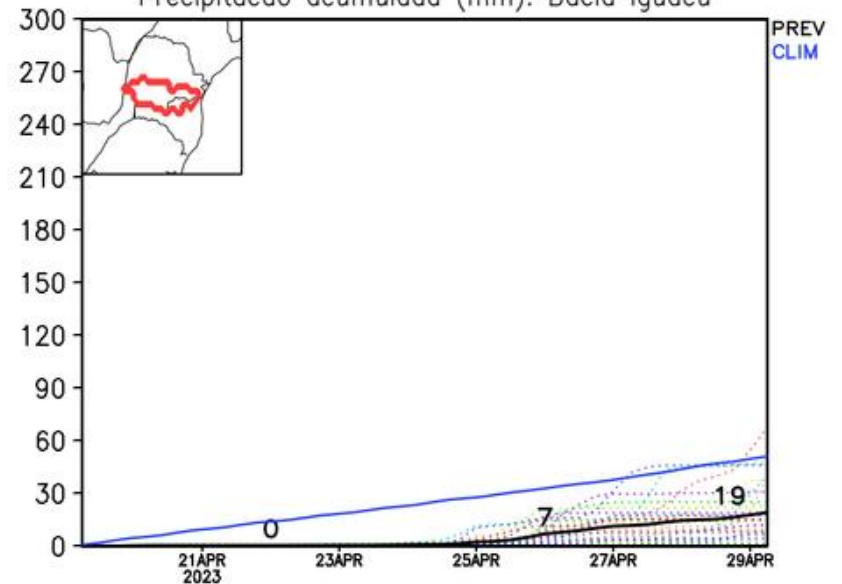
GEFS / Bacia do Rio Iguacu  
Precipitação acumulada em 7 dias (mm)  
Previsão das 00Z dia 19/04/2023



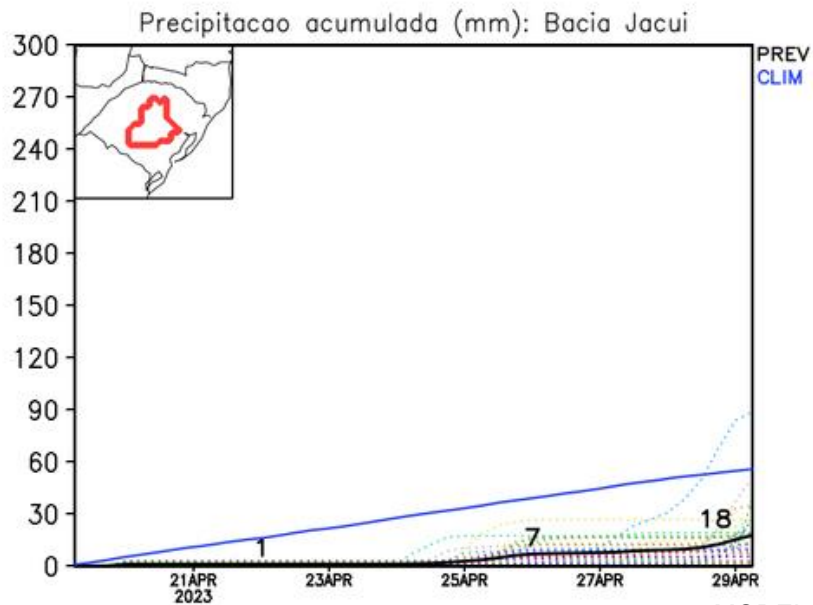
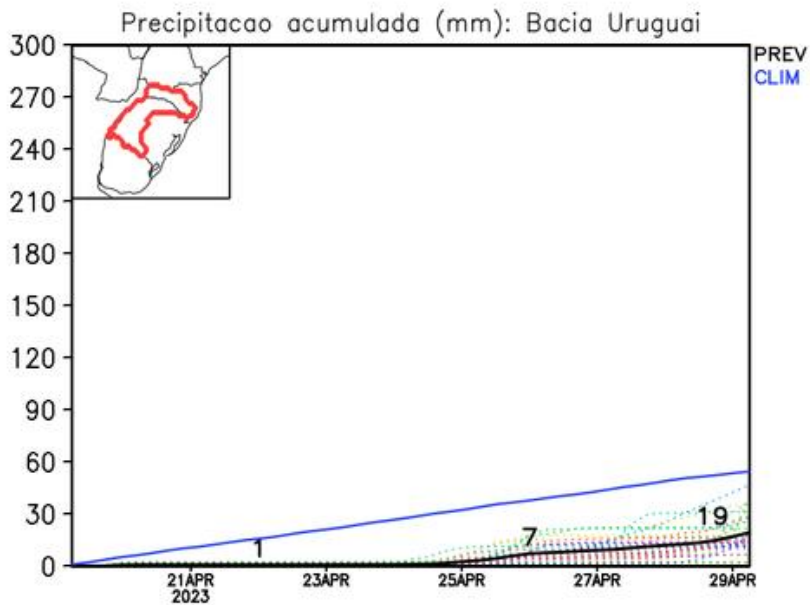
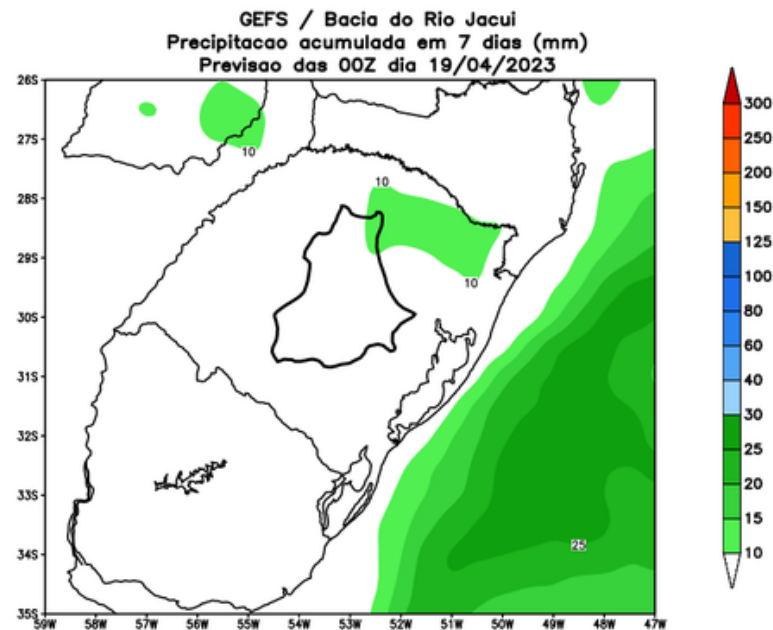
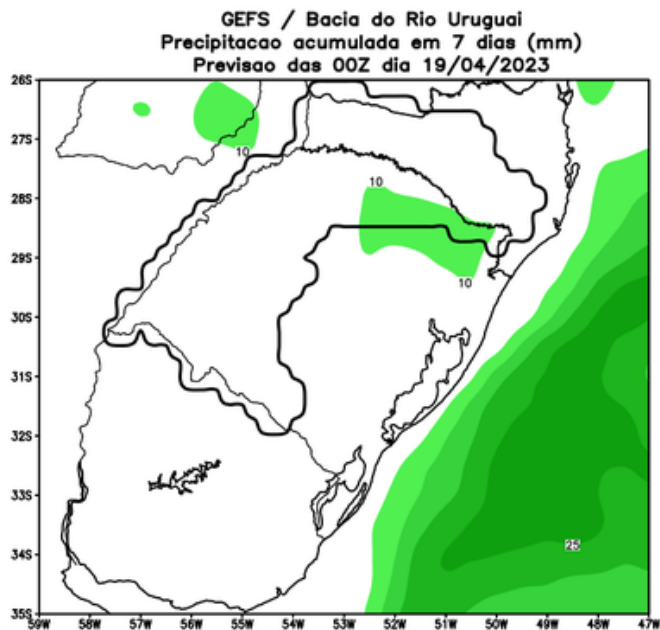
Precipitação acumulada (mm): Bacia Itaipu



Precipitação acumulada (mm): Bacia Iguacu

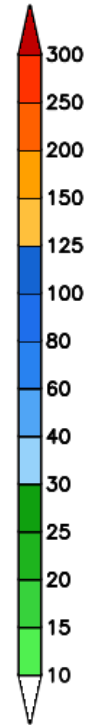
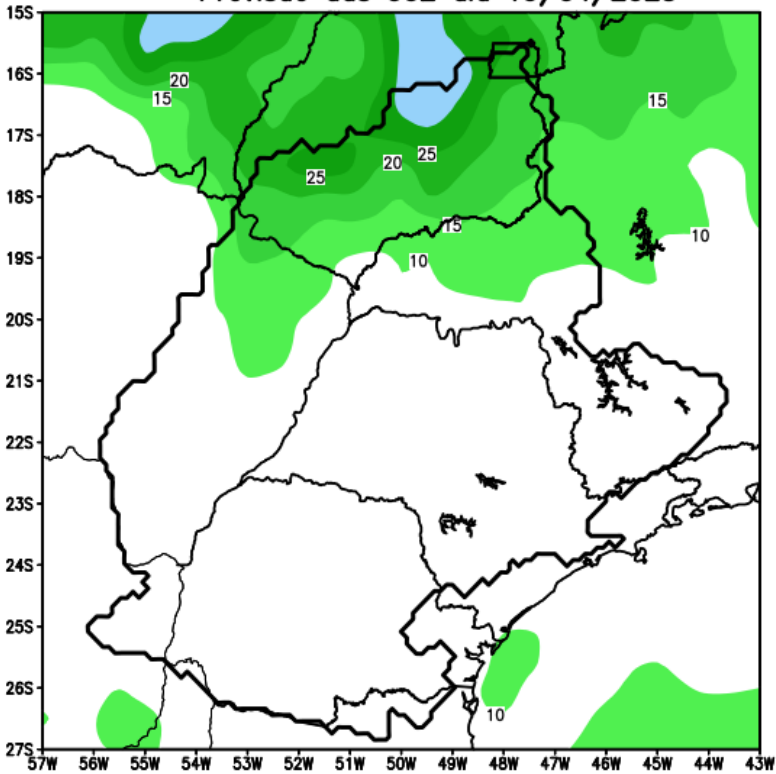


# Previsão para as principais bacias

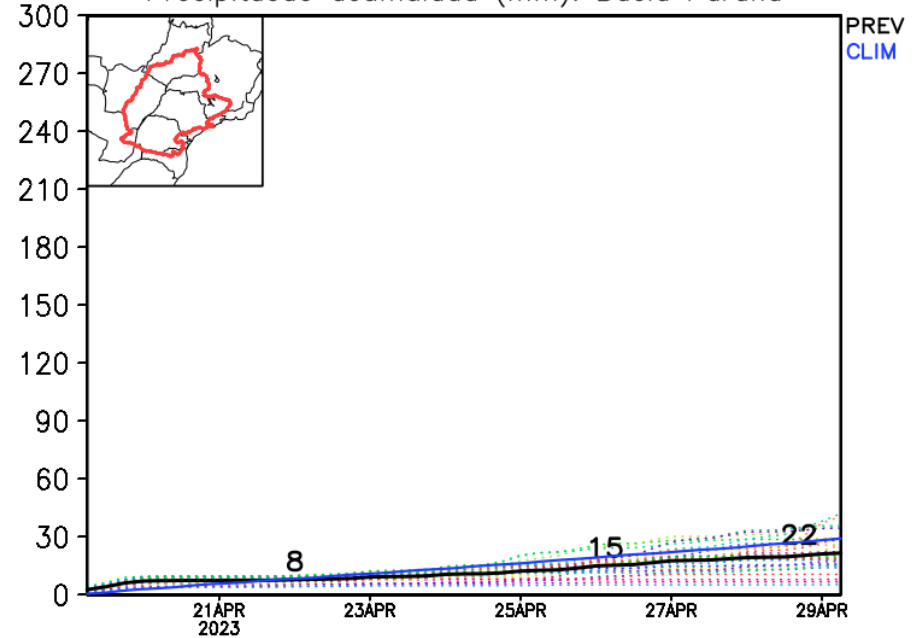


# Previsão para as principais bacias

GEFS / Bacia do Parana  
Precipitacao acumulada em 7 dias (mm)  
Previsao das 00Z dia 19/04/2023

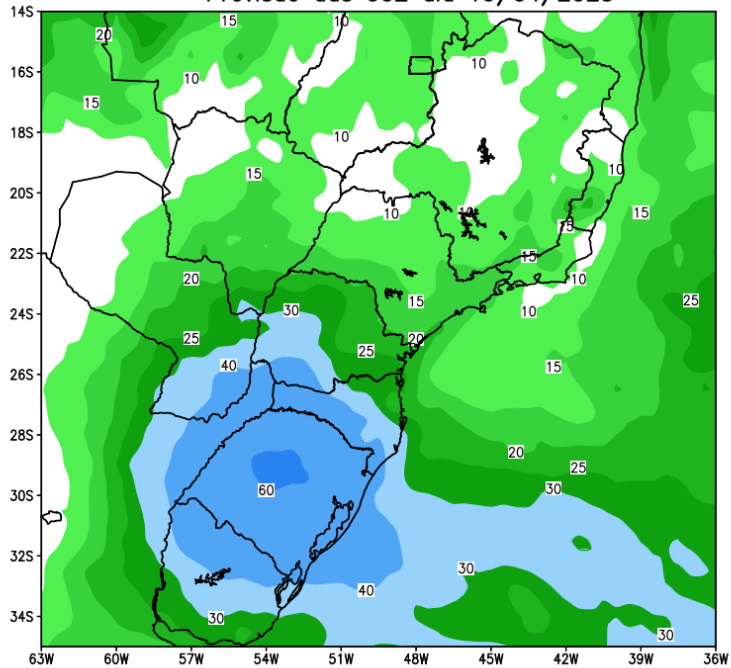


Precipitacao acumulada (mm): Bacia Parana

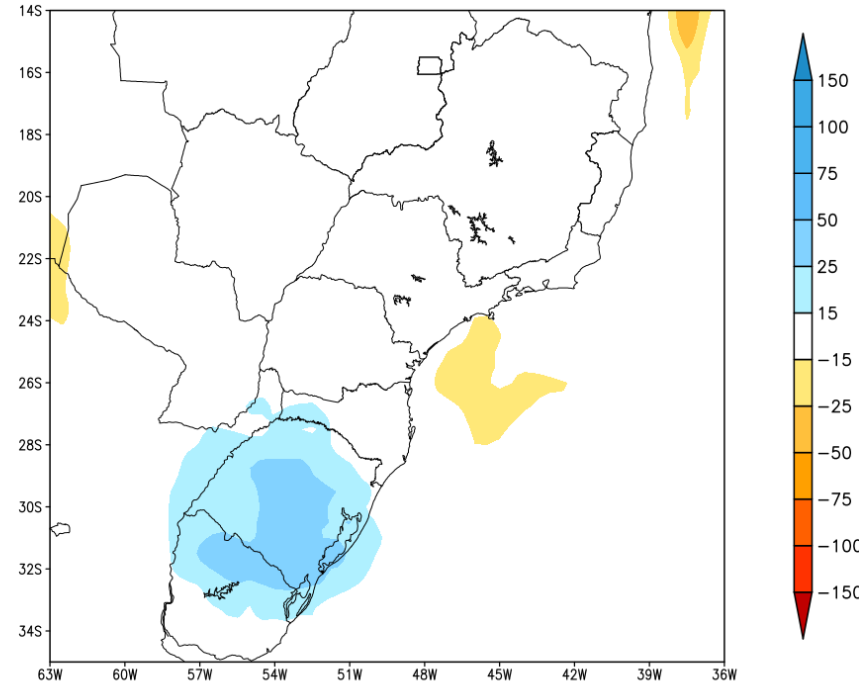


# Tendência para a segunda semana

GEFS / BRASIL\_SUL  
Precipitacao acumulada 2aSem (mm)  
Previsao das 00Z dia 19/04/2023



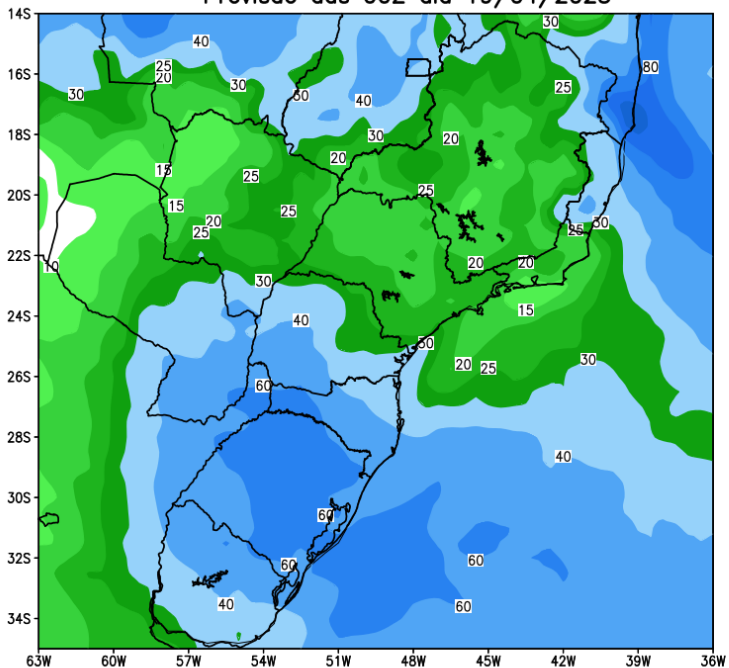
Anomalia de Precipitacao BR\_SUL (mm)  
Periodo: 2023042700 a 2023050300



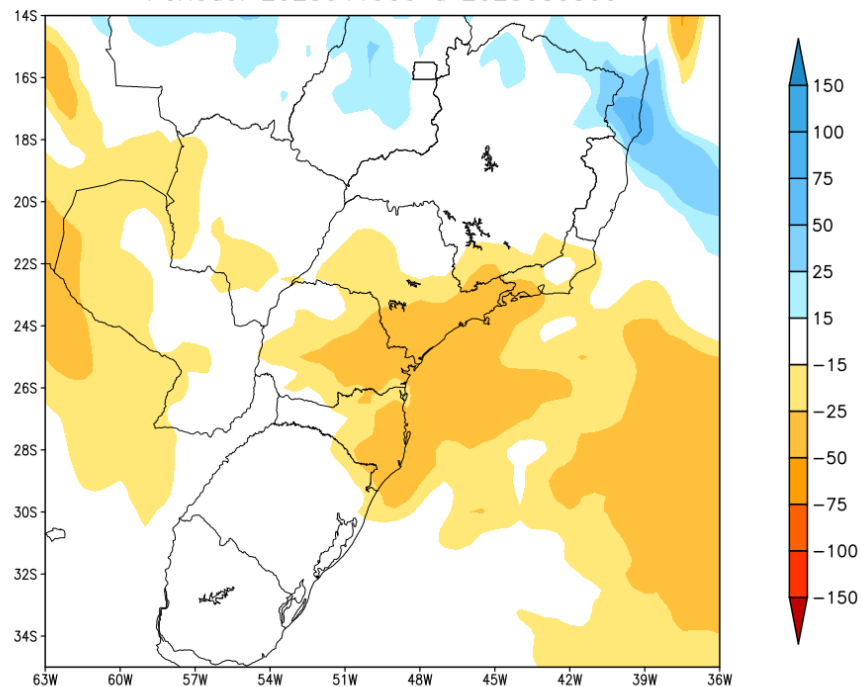
MODELO GFS

# Tendência para as duas próximas semanas

GEFS / BRASIL\_SUL  
Precipitacao acumulada 14dias (mm)  
Previsao das 00Z dia 19/04/2023



Anomalia de Precipitacao BR\_SUL (mm)  
Periodo: 2023041900 a 2023050300



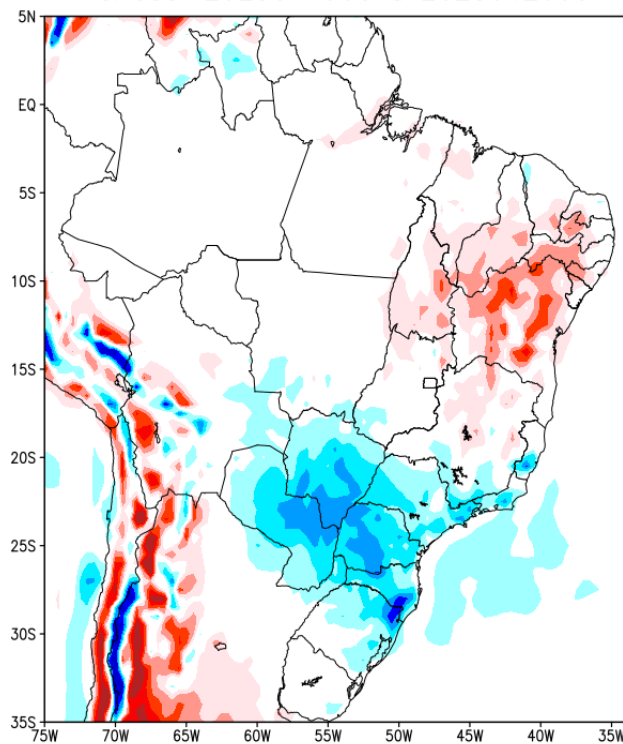
MODELO GFS

# Previsão de Temperatura

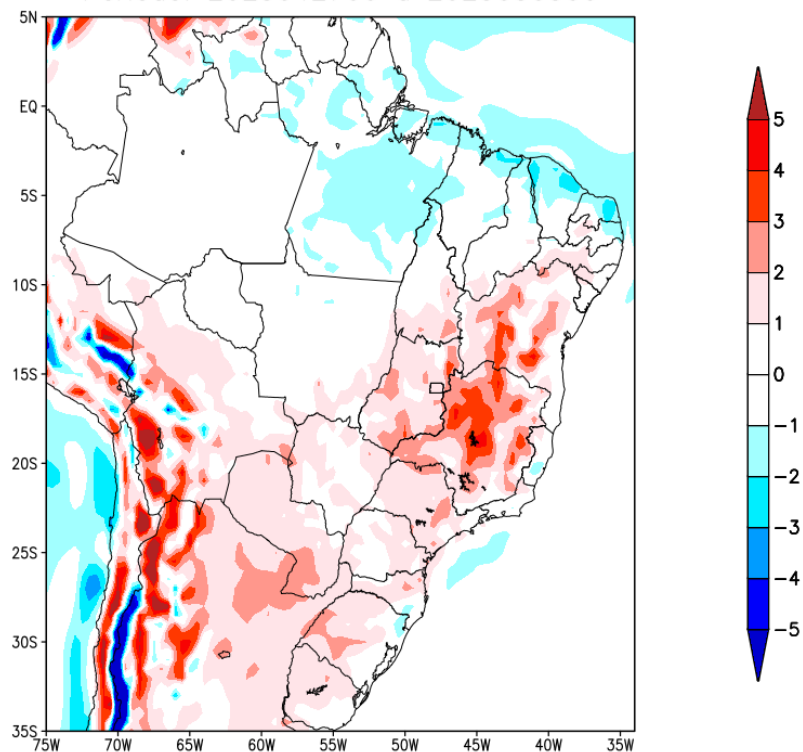
## 1ª Semana

## 2ª Semana

Anomalia de Temperatura BR (C)  
Período: 2023041900 a 2023042600



Anomalia de Temperatura BR (C)  
Período: 2023042700 a 2023050300



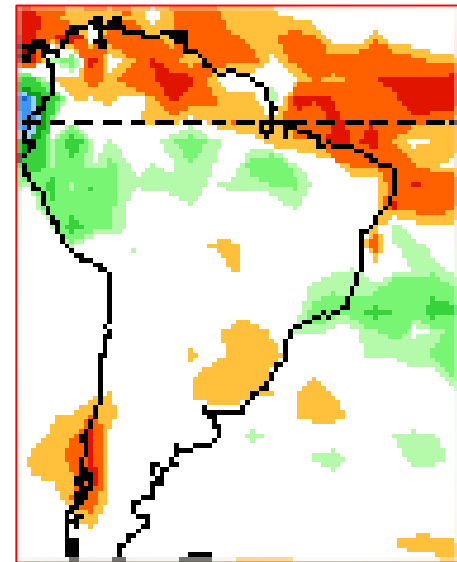
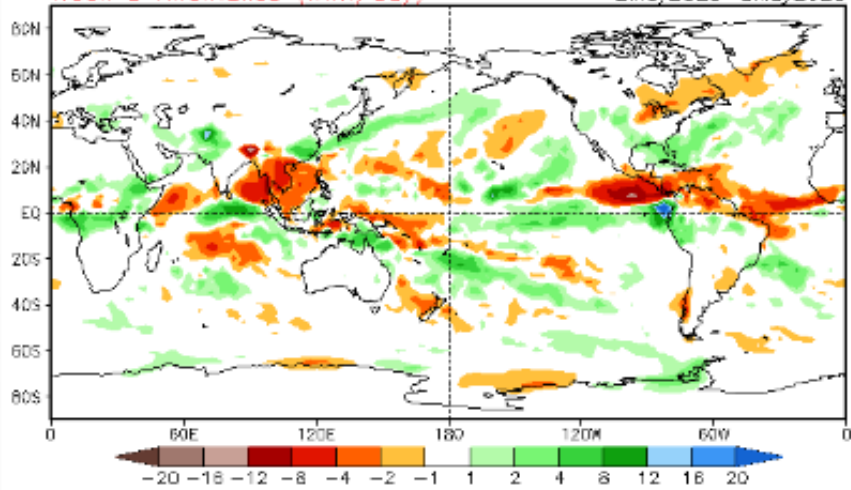


# Tendência 3a e 4a semanas

16 Member Ensemble Mean Forecast from 17Apr2023

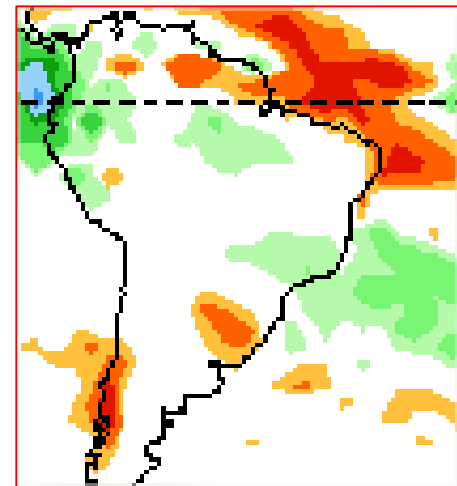
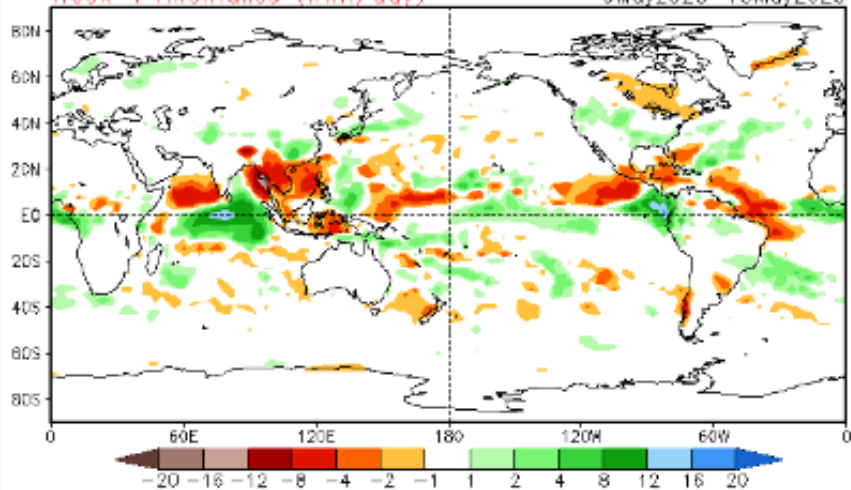
Week 3 Anomalies (mm/day)

2May2023-8May2023



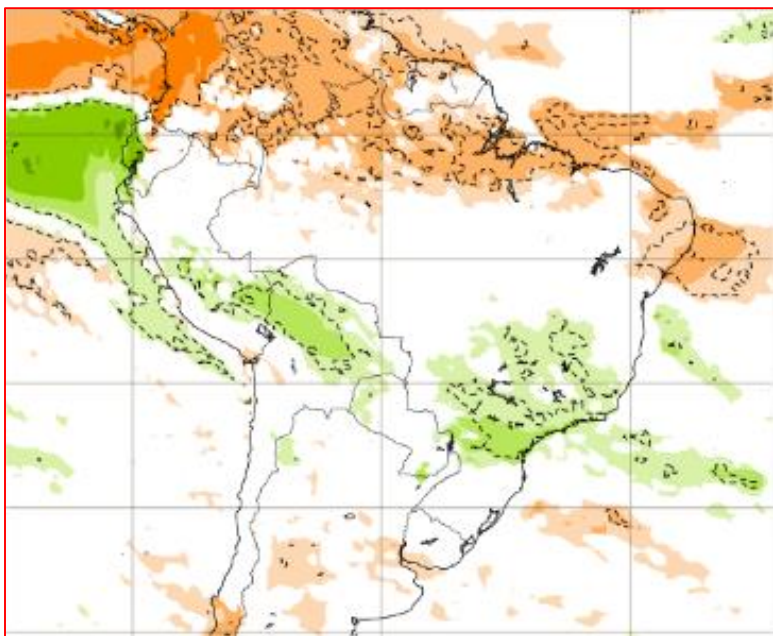
Week 4 Anomalies (mm/day)

9May2023-15May2023

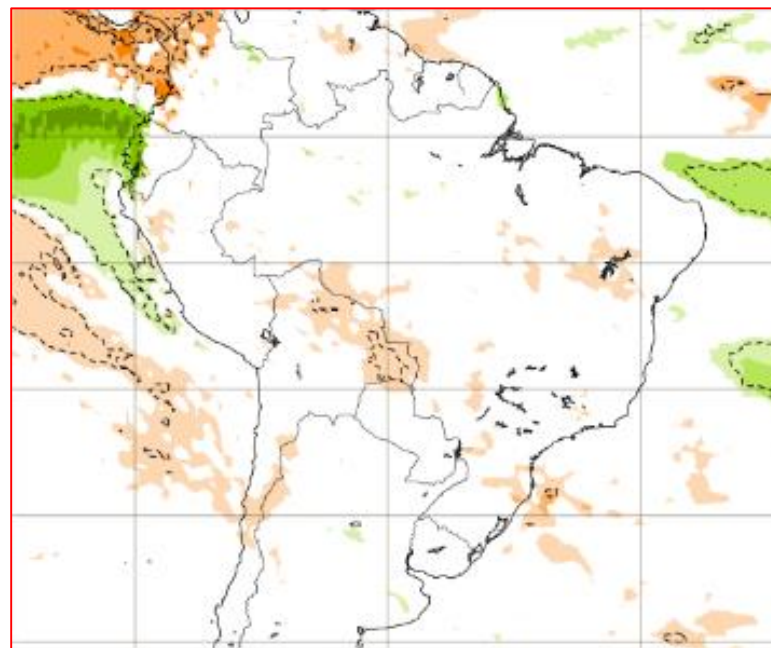


# Tendência para 3ª e 4ª semanas

01-07/05



08-15/05





Update prepared by:  
Climate Prediction Center / NCEP  
17 April 2023

# Summary

ENSO Alert System Status: **El Niño Watch**

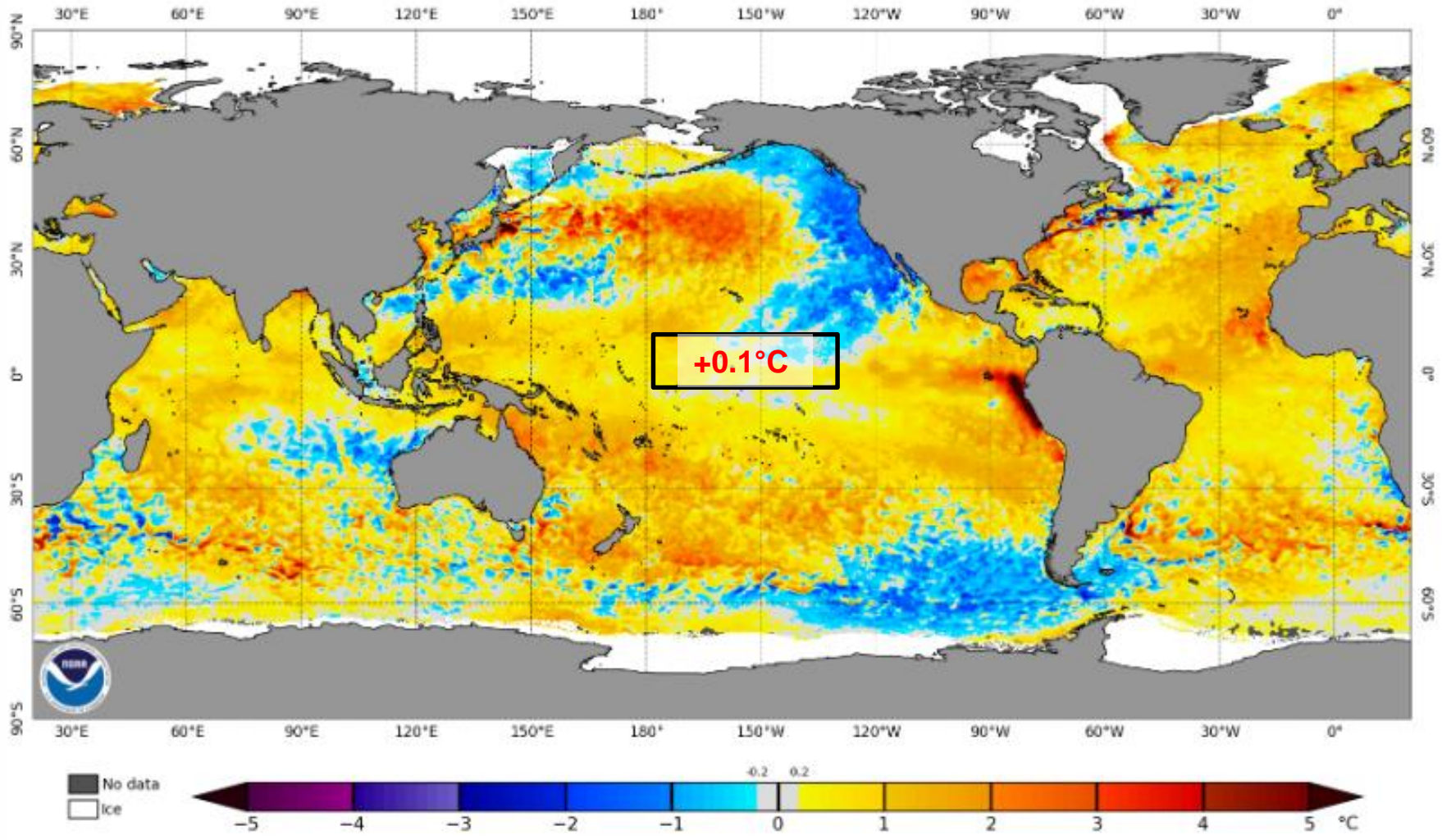
ENSO-neutral conditions are observed.\*

Equatorial sea surface temperatures (SSTs) are near-to-above average across most of the Pacific Ocean.

ENSO-neutral conditions are expected to continue through the Northern Hemisphere spring, followed by a 62% chance of El Niño developing during May-July 2023.\*

# Status Atual: Neutralidade

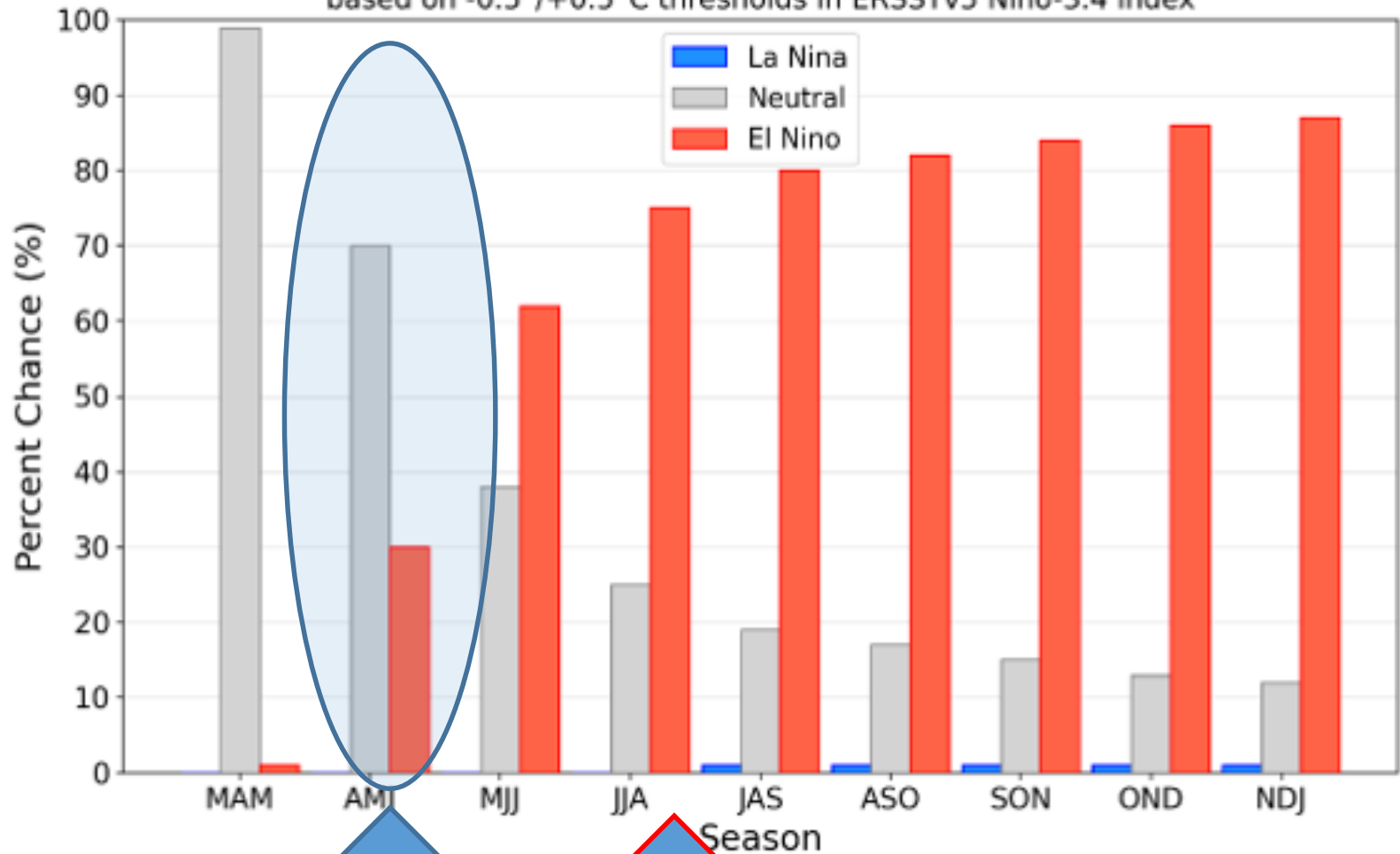
NOAA Coral Reef Watch Daily 5km SST Anomalies (v3.1) 16 Apr 2023



# Previsão do “ENSO”

## Official NOAA CPC ENSO Probabilities (issued Apr. 2023)

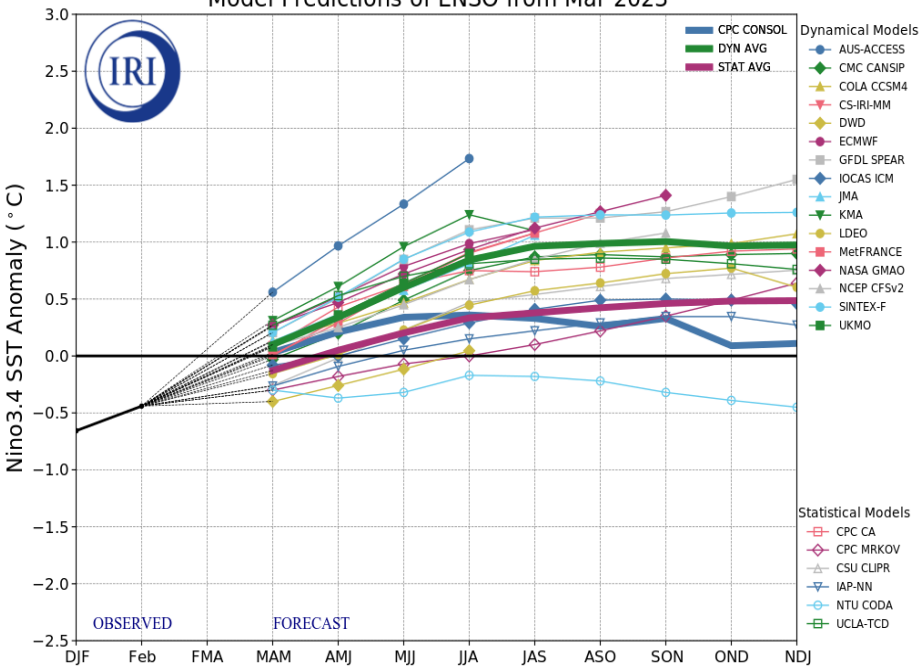
based on  $-0.5^{\circ}/+0.5^{\circ}\text{C}$  thresholds in ERSSTv5 Niño-3.4 index



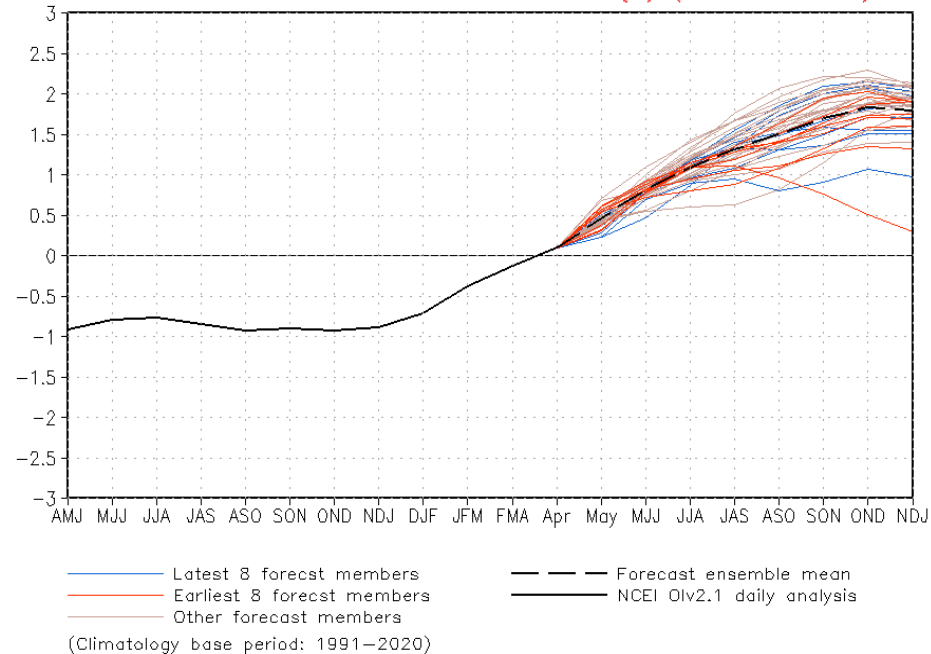
Status Atual: **Neutralidade**

# Previsão do “ENSO”

Model Predictions of ENSO from Mar 2023

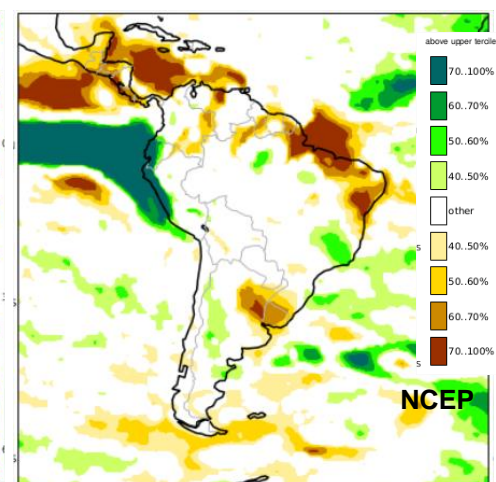
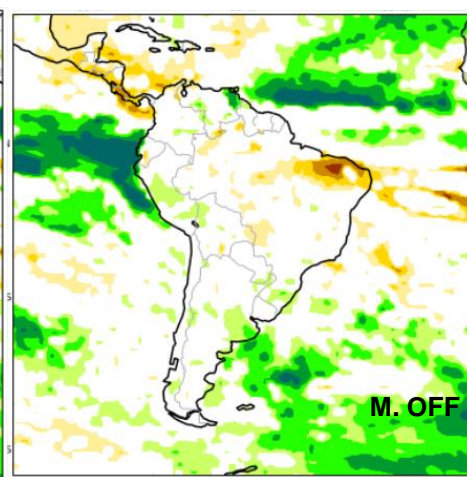
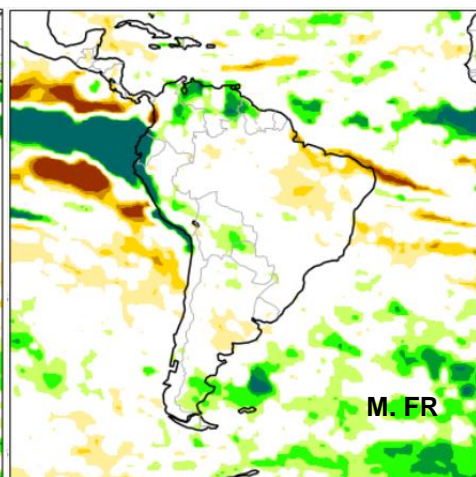
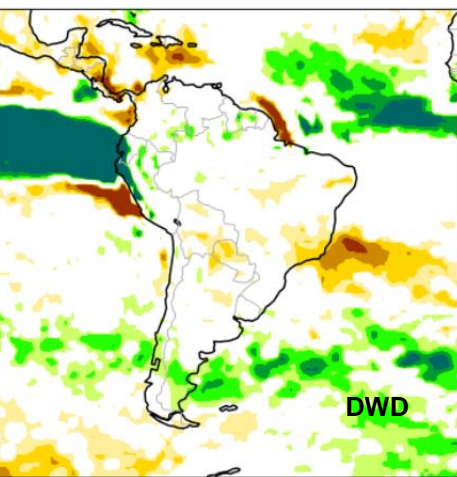
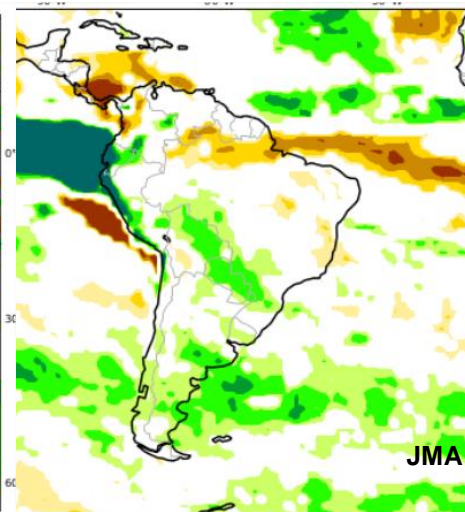
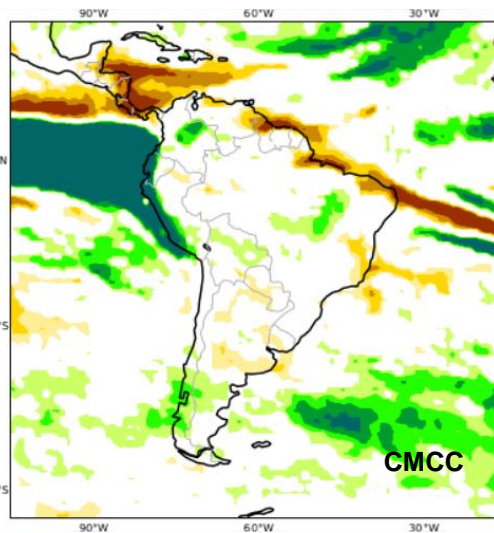
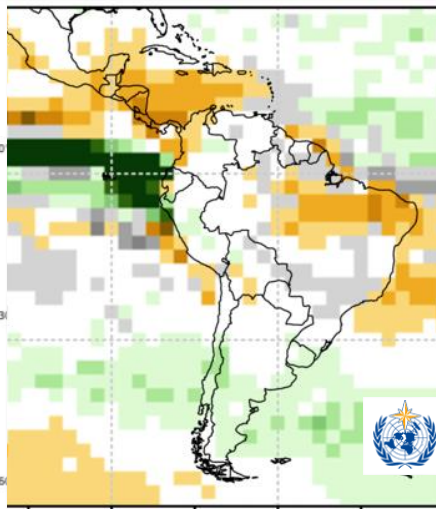
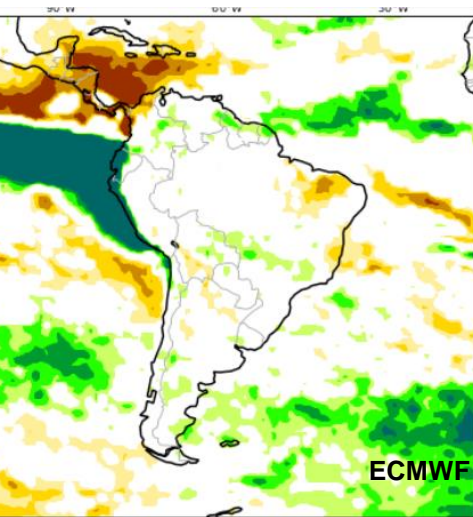


CFSv2 forecast Nino3.4 SST anomalies (K) (PDF corrected)



Atualizado: 17 April 2023

# Previsão sazonal de Chuva MJJ



# Previsão Multi Modelo MJJ

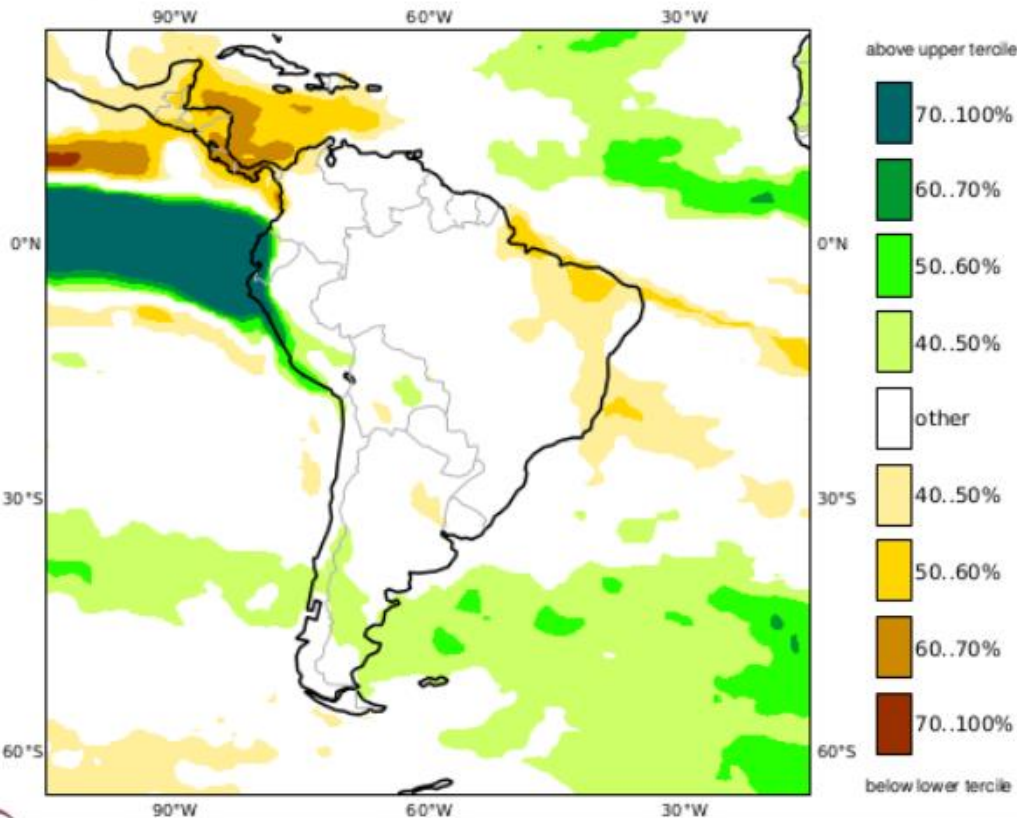
C3S multi-system seasonal forecast

Prob(most likely category of precipitation)

Nominal forecast start: 01/04/23

Unweighted mean

MJJ 2023



NMME Precipitation Anomalies (mm/day)

May2023-Jul2023

April2023 initial conditions

