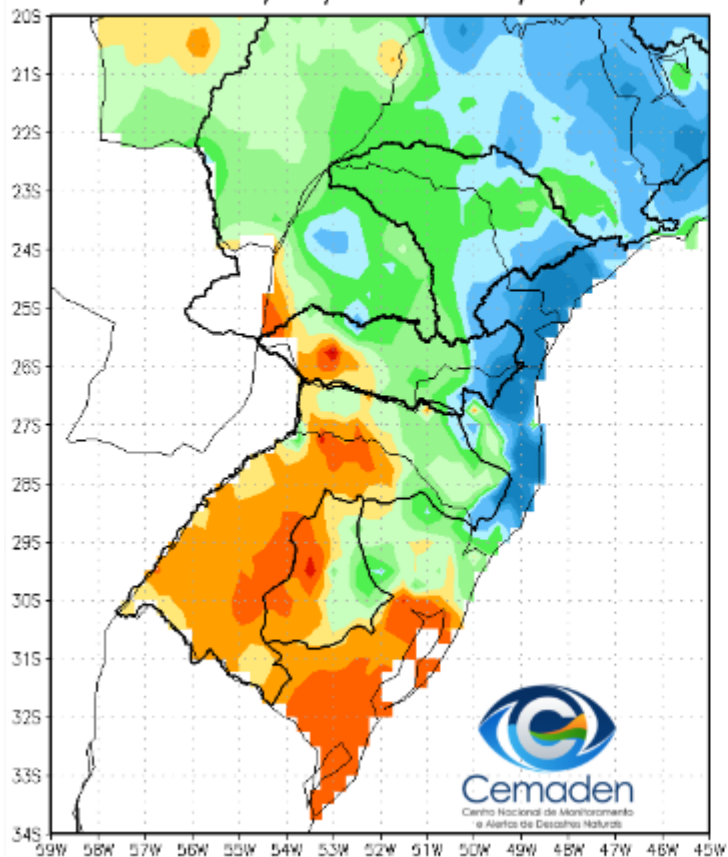


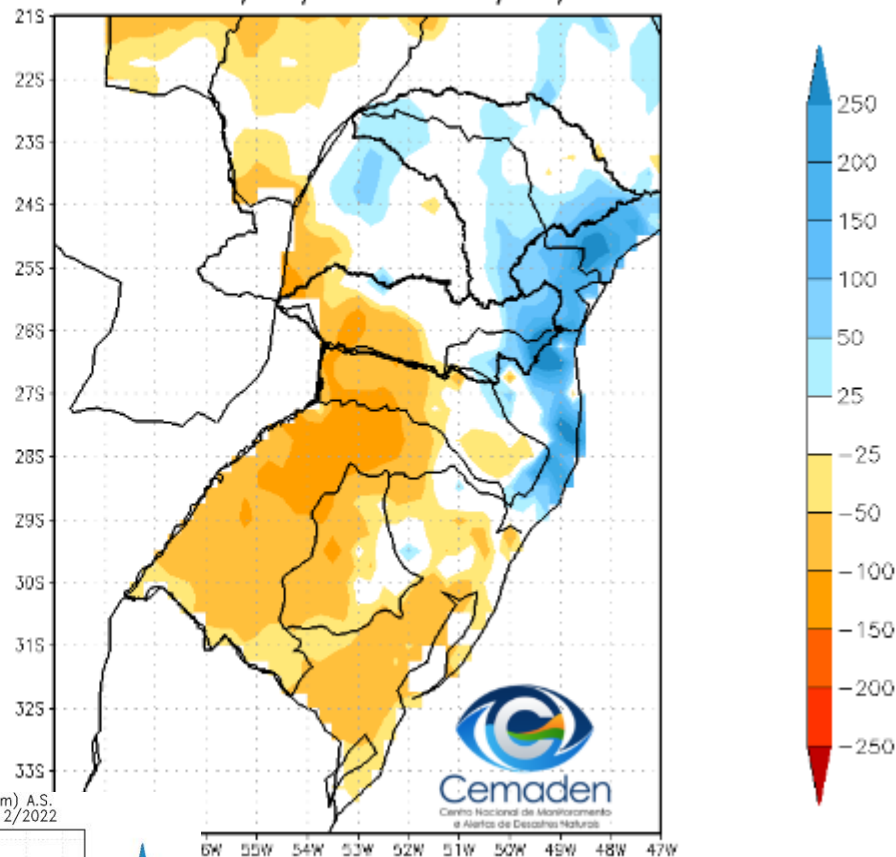
Monitoramento da situação da seca na Região Sul

Precipitação nos últimos 30 dias

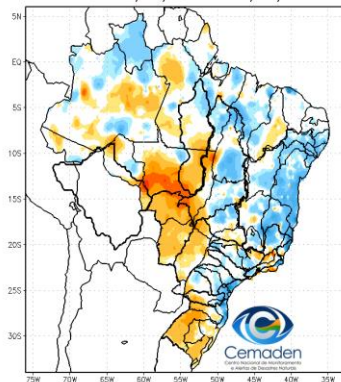
Precipitação Acumulada (mm) A.S.
Período: 14/11/2022 a 14/12/2022



Anomalia de Precipitação (mm) A.S.
Período: 14/11/2022 a 14/12/2022



Anomalia de Precipitação (mm) A.S.
Período: 14/11/2022 a 14/12/2022

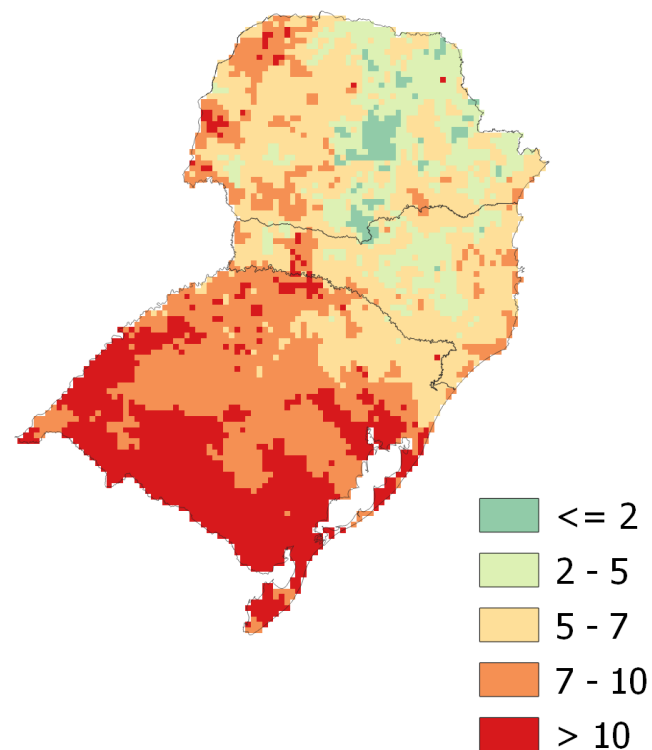
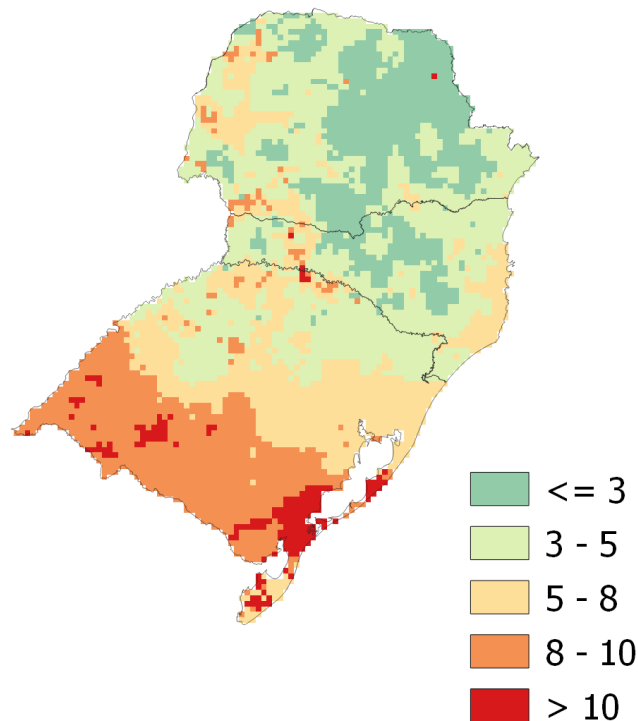
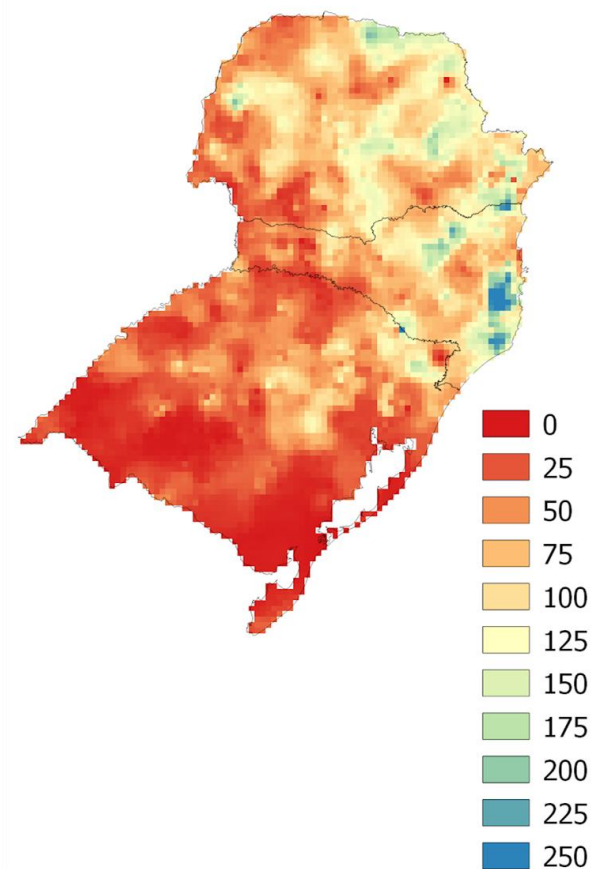


Precipitação – Região Sul: **Dezembro/2022 (Até 13/12)**

Chuva acumulada (mm)

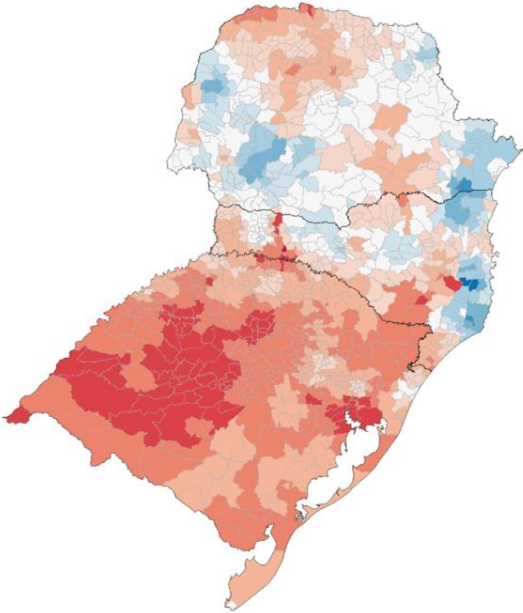
Total de dias sem chuva

Máximo de dias consecutivos sem chuva

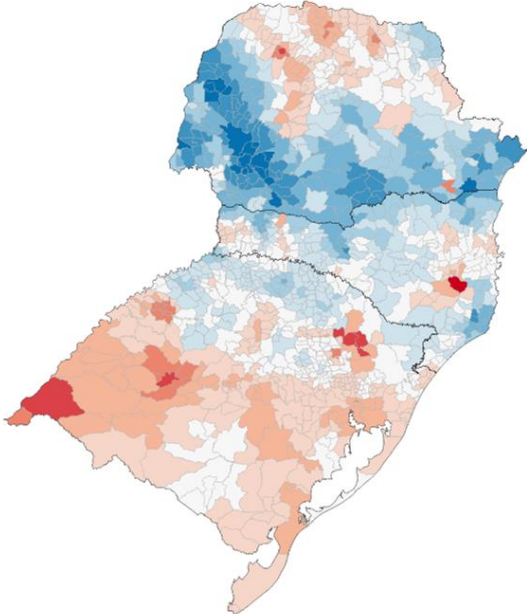


SPI: Dezembro de 2022

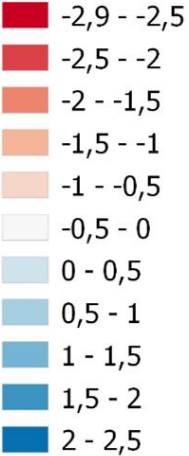
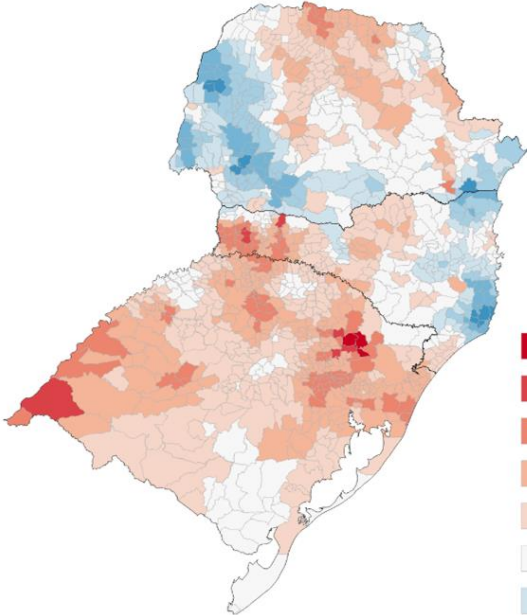
SPI03



SPI12



SPI24



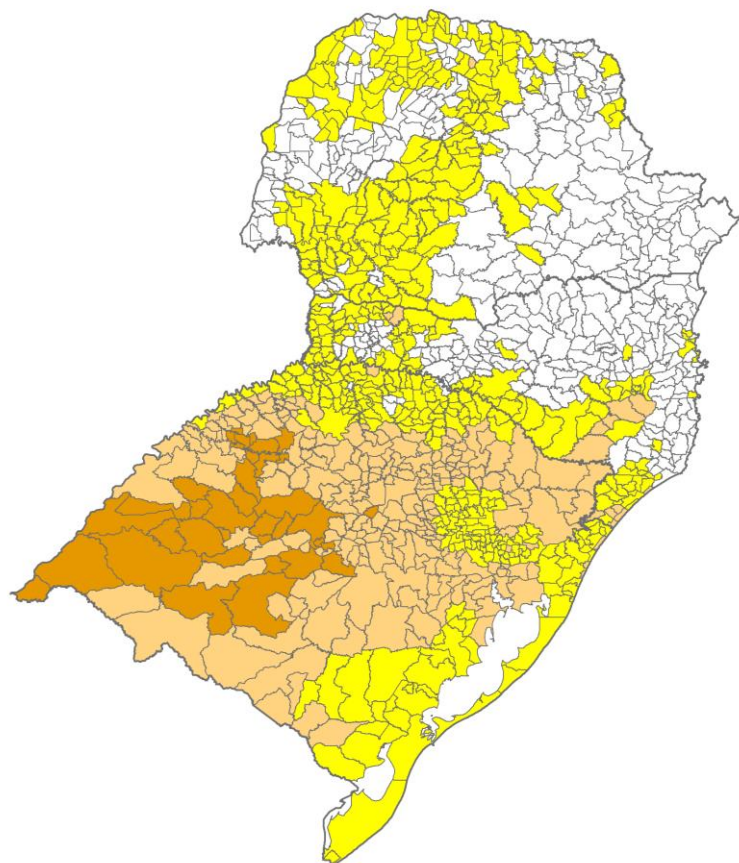
Fonte: Precipitação observada (MERGE)

Índice Integrado de Seca – IIS nas escalas de 3 e 6 meses

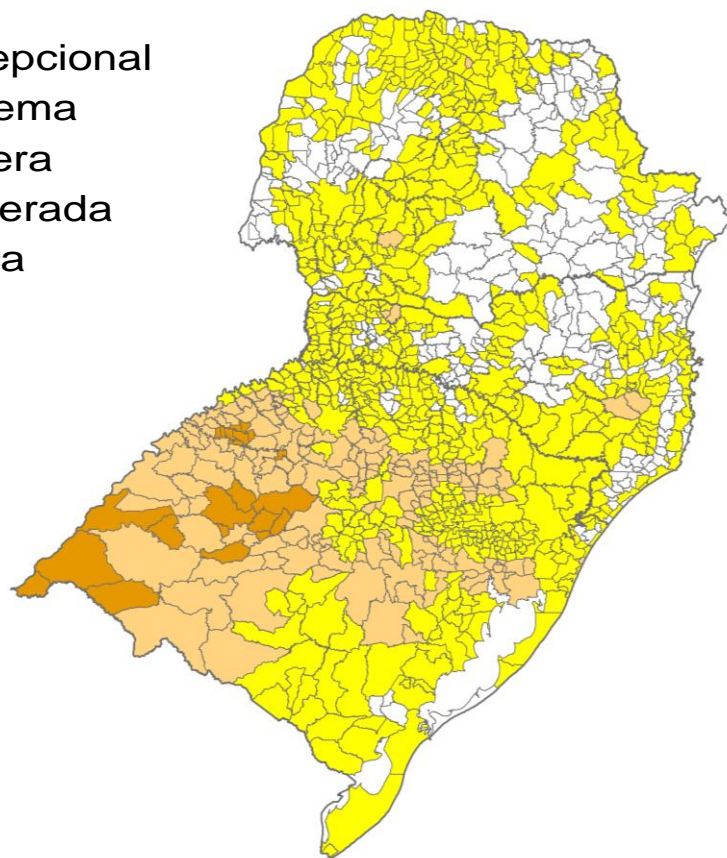
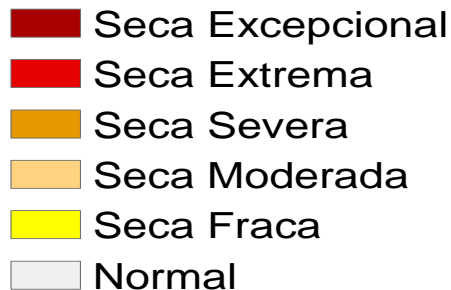
IIS3

Dezembro/2022

IIS6



IIS

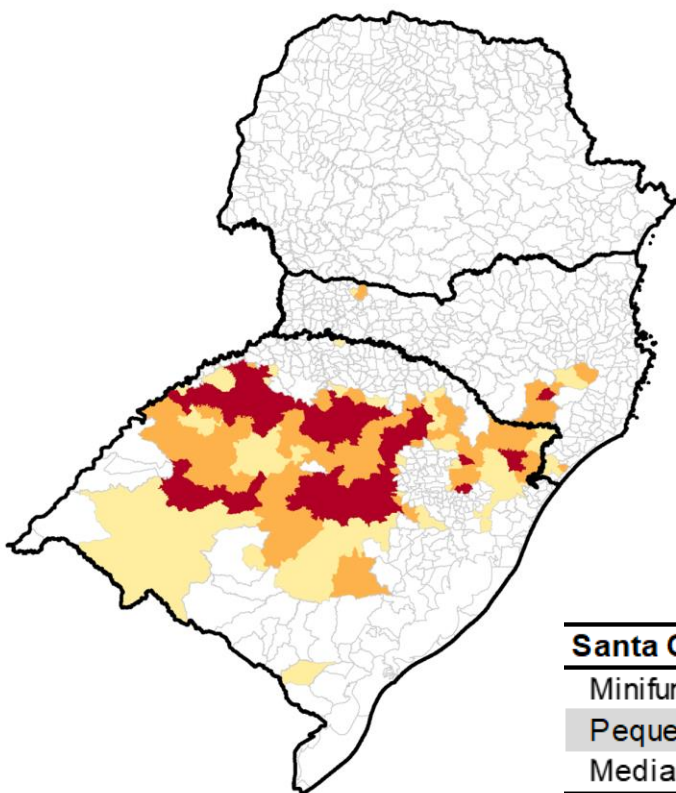


- 513 municípios seca fraca
- 244 municípios seca moderada
- 37 municípios seca severa

- 704 municípios seca fraca
- 167 municípios seca moderada
- 22 municípios seca severa

Áreas Agroprodutivas afetadas pela seca – Região Sul:

Dezembro/22



UF	40 a 60%	60 - 80%	> 80%
PR			
RS	42	60	128
SC	5	6	1

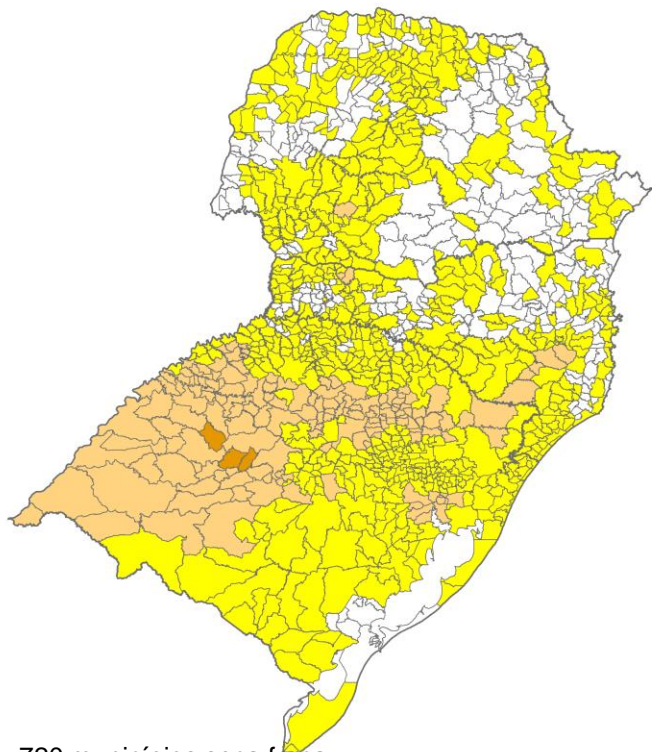
	40 a 60%	60 - 80%	> 80%	Imóveis Rurais Impactados > 40%
Santa Catarina				
Minifundio	4598 (2%)	5479 (2%)	204 (*)	10281 (4%)
Pequena Propriedade	1325 (2%)	2679 (3%)	226 (*)	4230 (5%)
Media Propriedade	224 (2%)	800 (8%)	92 (1%)	1116 (11%)
Rio Grande do Sul				
Minifundio	38628 (10%)	48158 (13%)	113953 (31%)	200739 (54%)
Pequena Propriedade	15999 (12%)	22413 (16%)	35663 (26%)	74075 (54%)
Media Propriedade	5684 (23%)	6172 (25%)	2885 (12%)	14741 (60%)

(*) Porcentagem inferior a 1%.

*Estimativa a partir dos dados do Cadastro Ambiental Rural para minifúndios, pequenas e médias propriedades e IIS3

Cenários IIS: Região Sul: **Dezembro/22**

Chuva 30% ACIMA da média

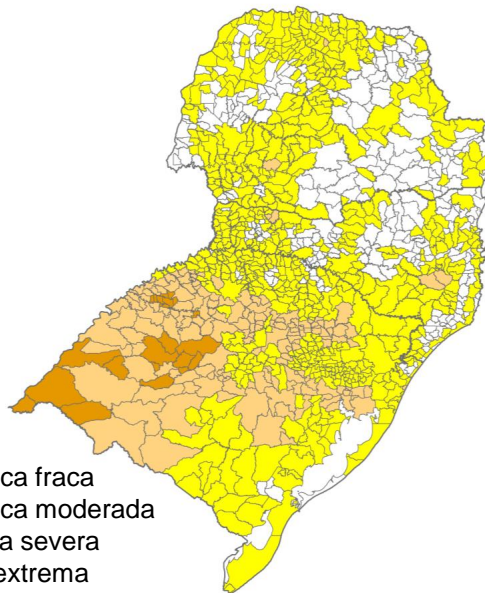


720 municípios seca fraca
162 municípios seca moderada
3 municípios seca severa
0 município seca extrema
0 município seca excepcional

IIS

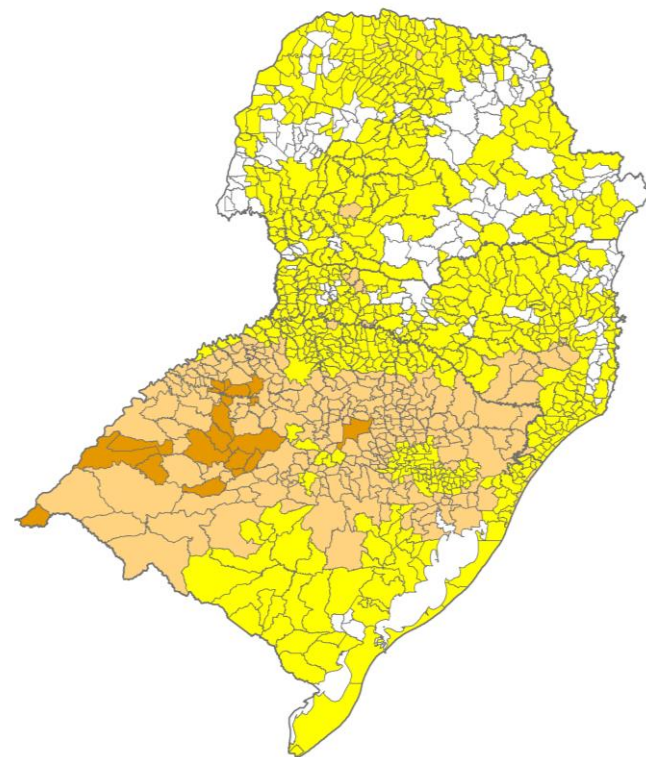
- Seca Excepcional
- Seca Extrema
- Seca Severa
- Seca Moderada
- Seca Fraca
- Normal

IIS6 observado



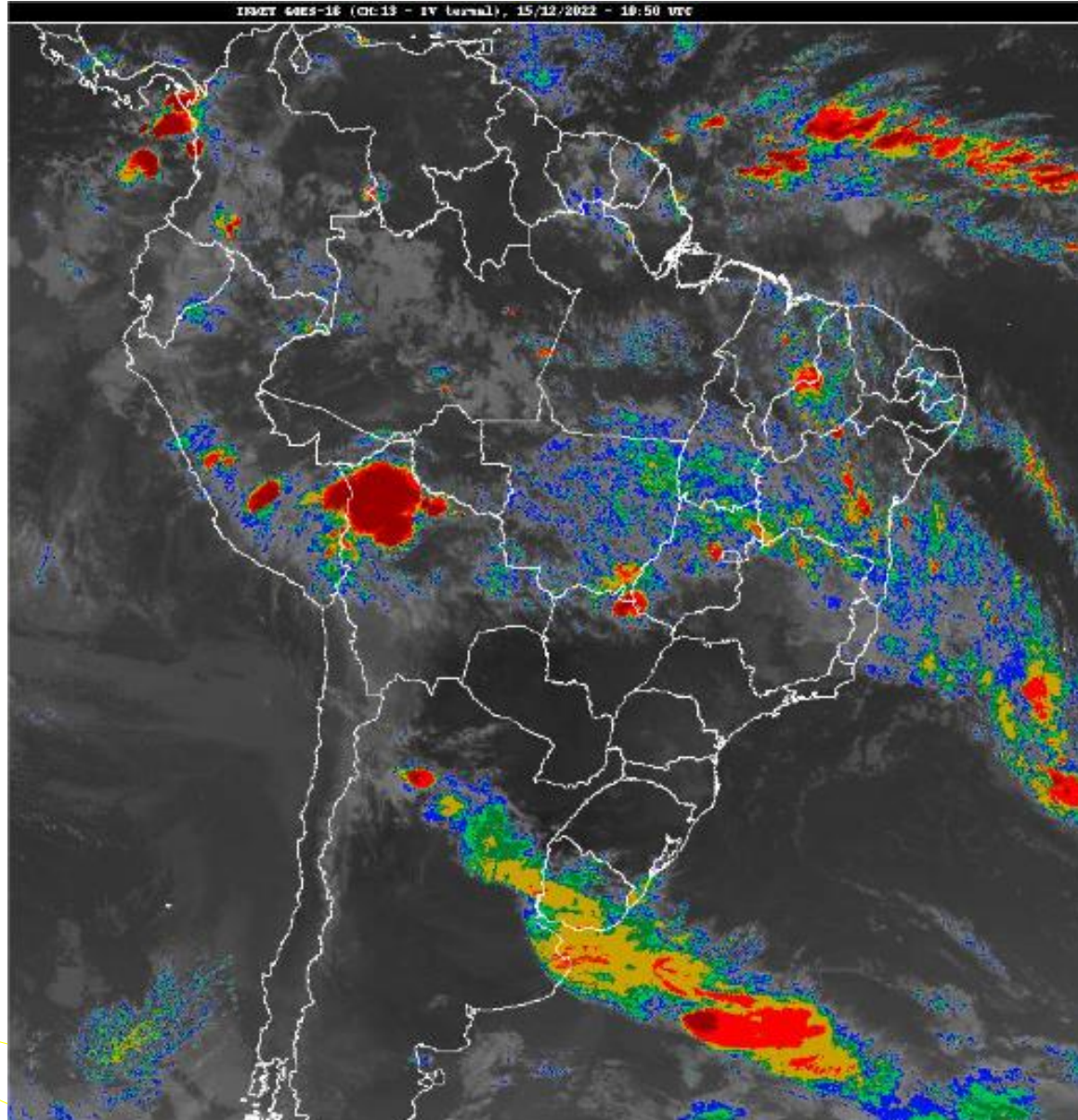
704 municípios seca fraca
167 municípios seca moderada
22 municípios seca severa
0 município seca extrema
0 município seca excepcional

Chuva 30% ABAIXO da média



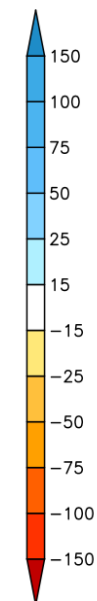
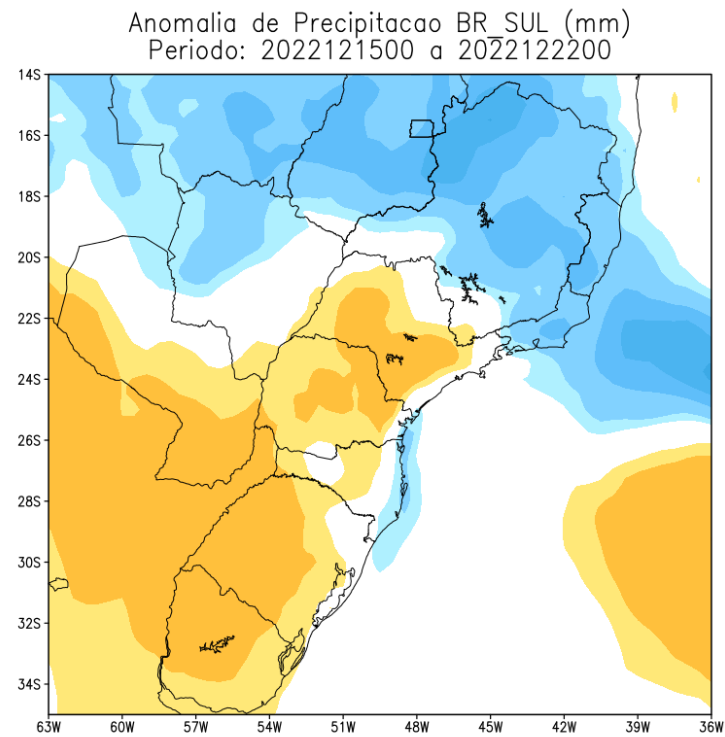
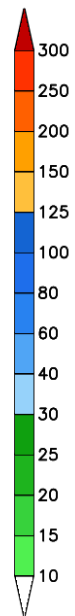
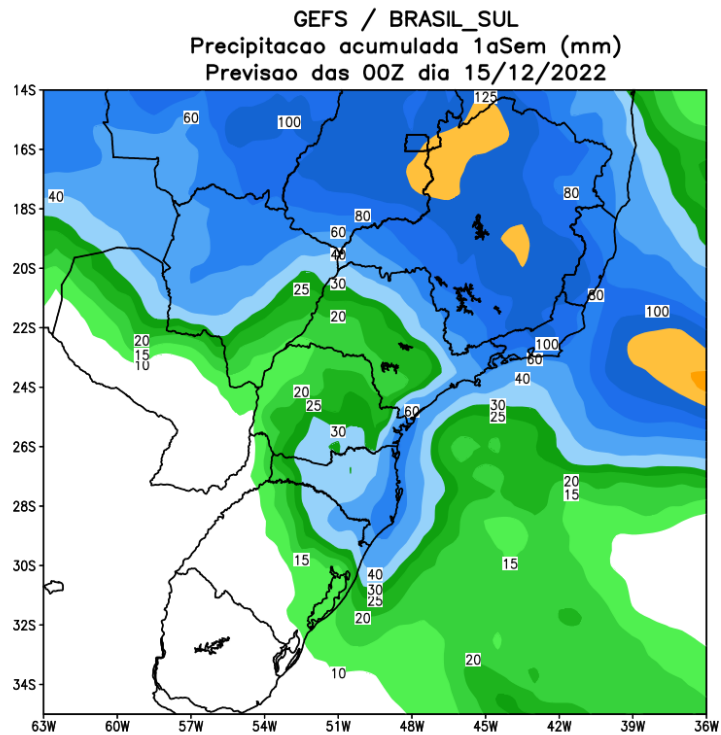
732 municípios seca fraca
264 municípios seca moderada
20 municípios seca severa
0 município seca extrema
0 município seca excepcional

Situação meteorológica atual



Fonte: INMET

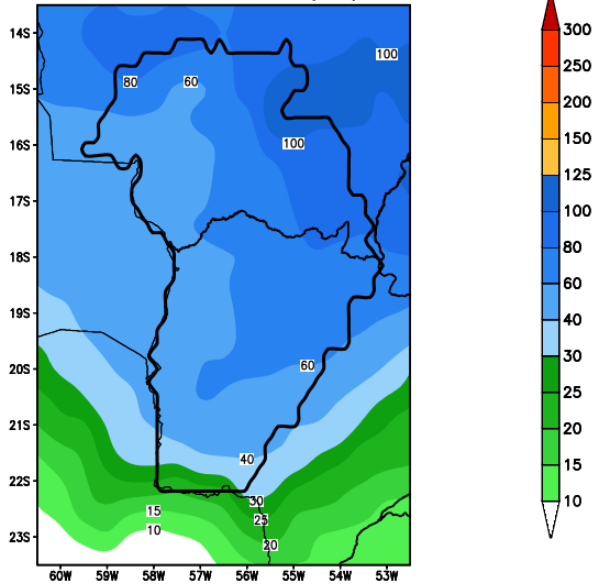
Previsão de chuva próximos 7 dias



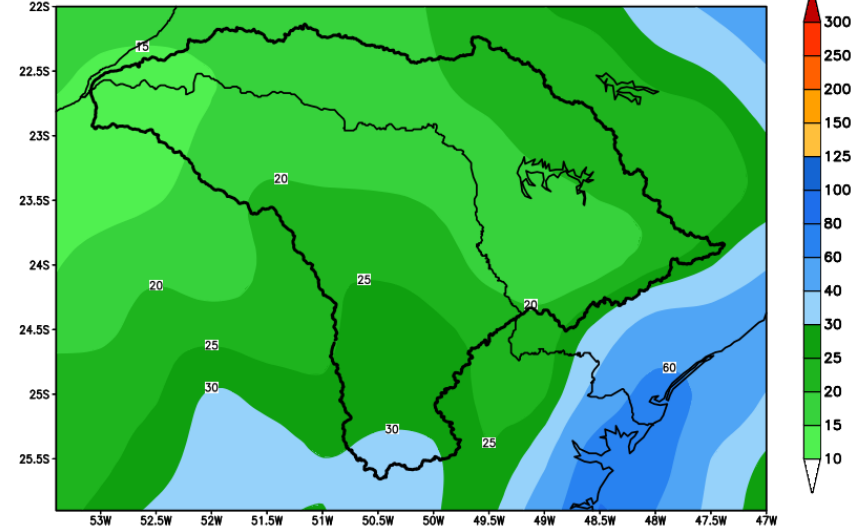
MODELO GFS

Previsão para as principais bacias

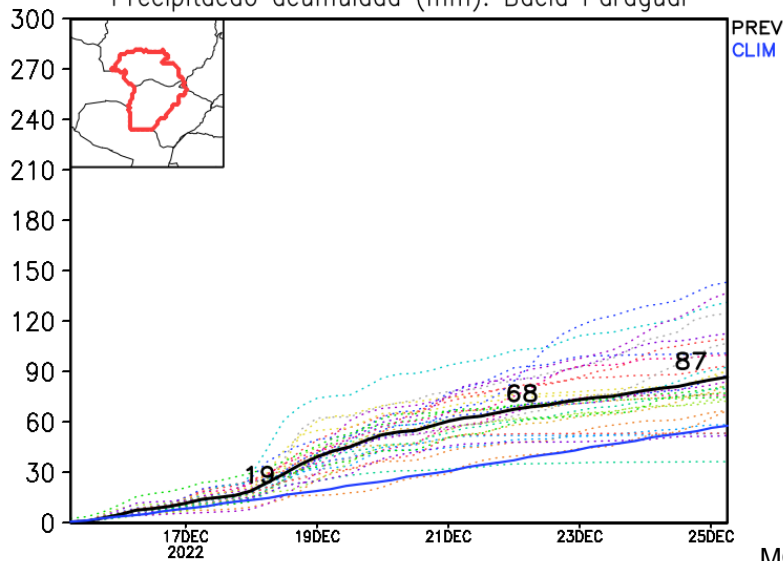
GEFS / Bacia do Rio Paraguai
Precipitacao acumulada em 7 dias (mm)
Previsao das 00Z dia 15/12/2022



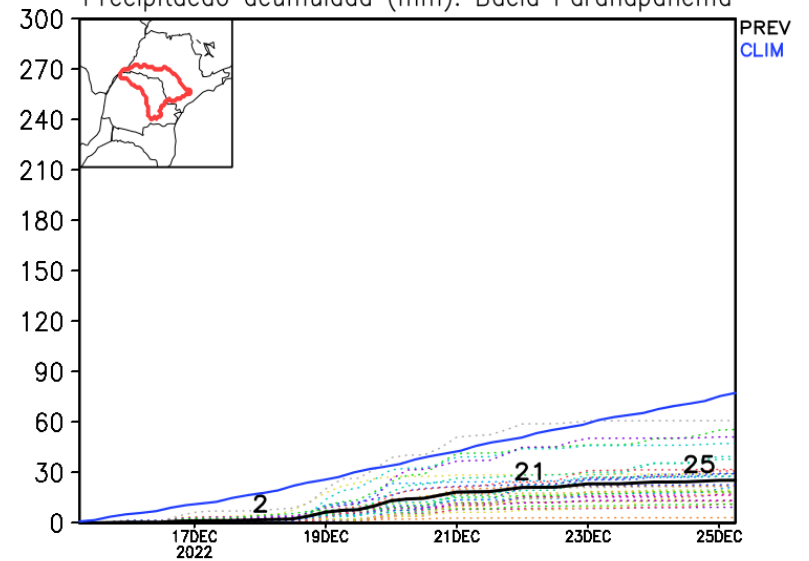
GEFS / Bacia do Rio Paranapanema
Precipitacao acumulada em 7 dias (mm)
Previsao das 00Z dia 15/12/2022



Precipitacao acumulada (mm): Bacia Paraguai

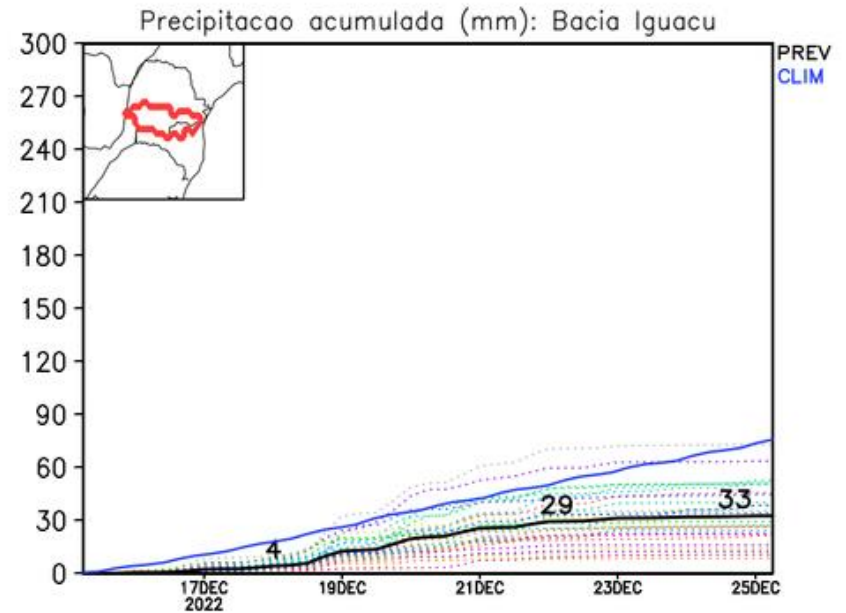
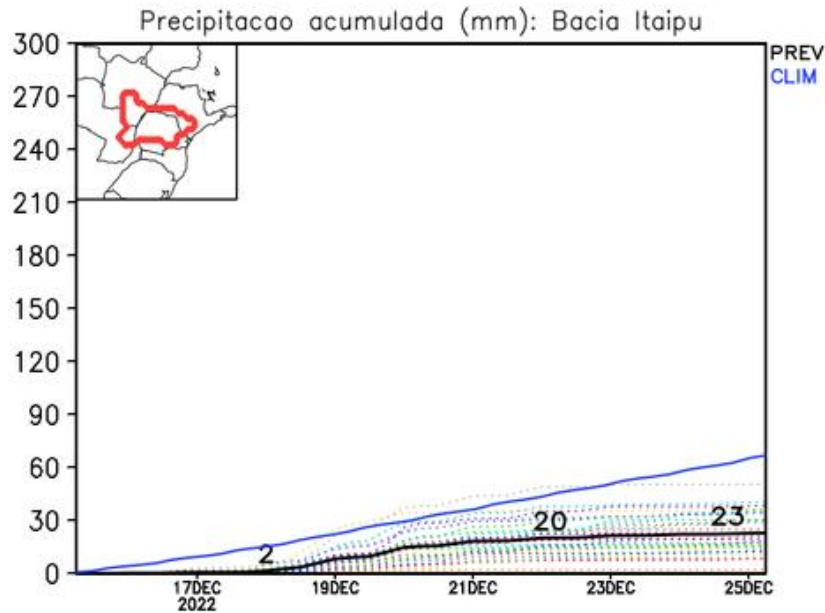
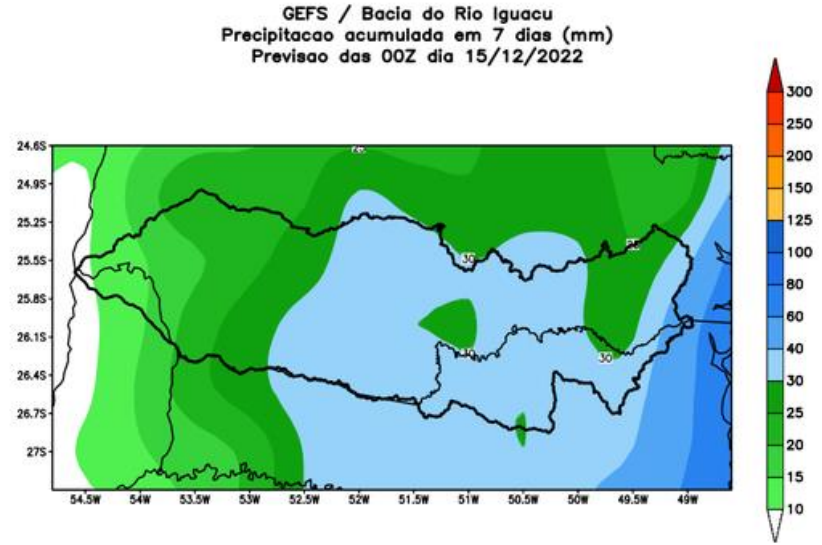
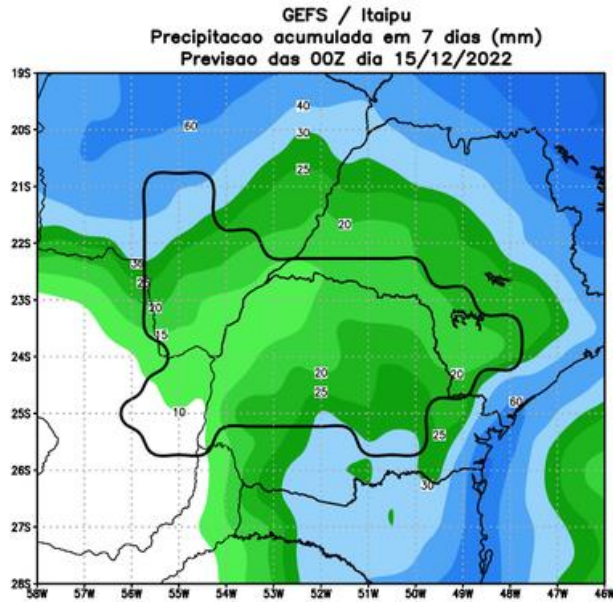


Precipitacao acumulada (mm): Bacia Paranapanema

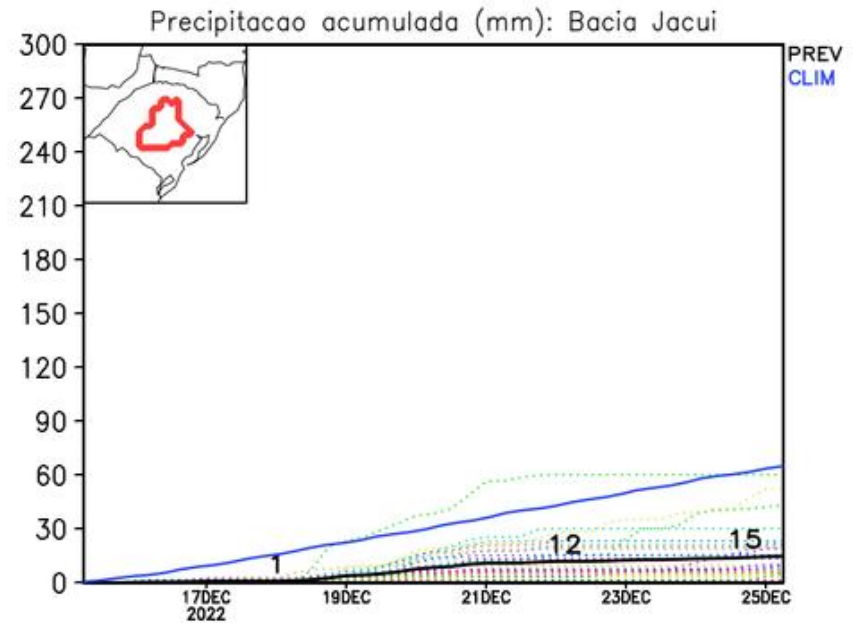
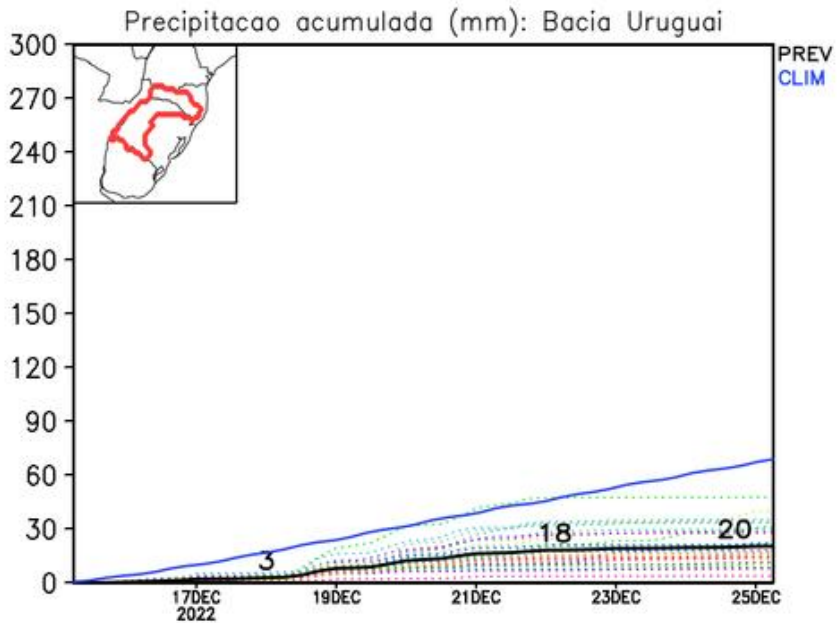
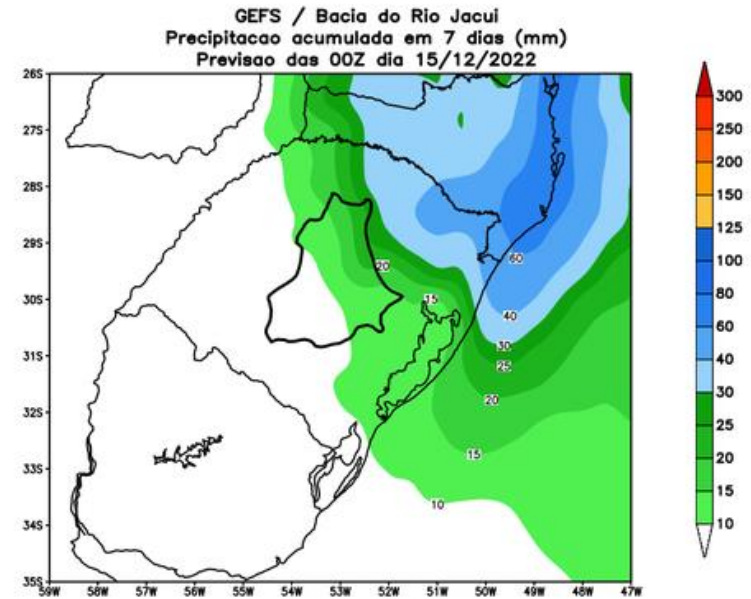
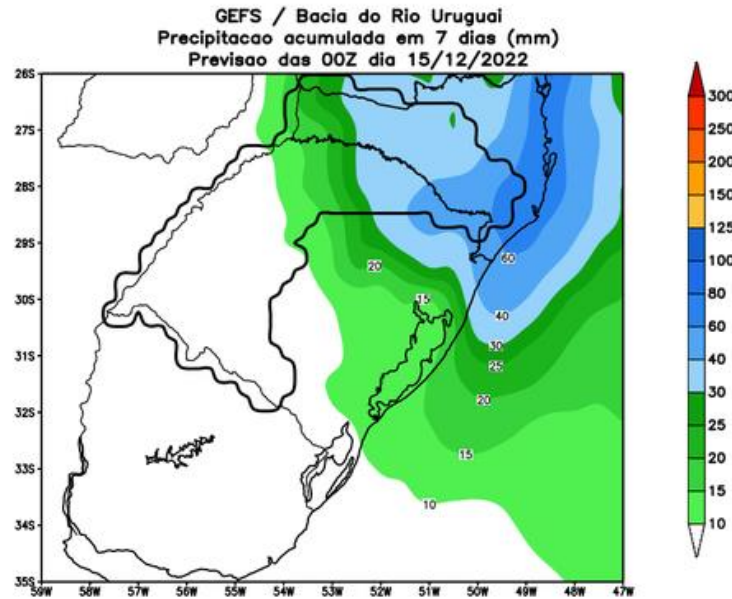


MODELO GFS

Previsão para as principais bacias

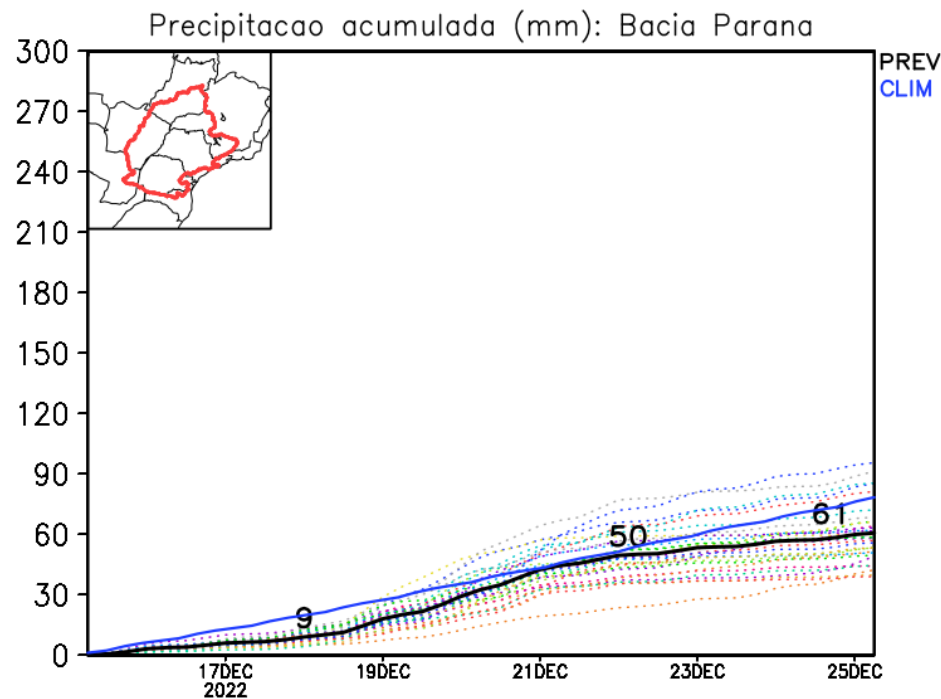
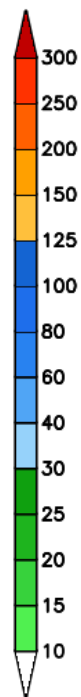
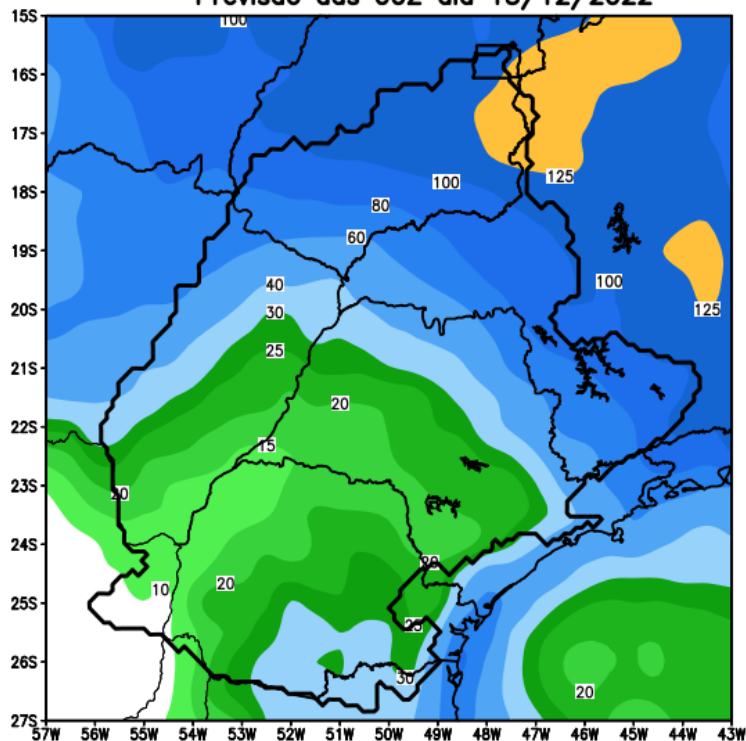


Previsão para as principais bacias



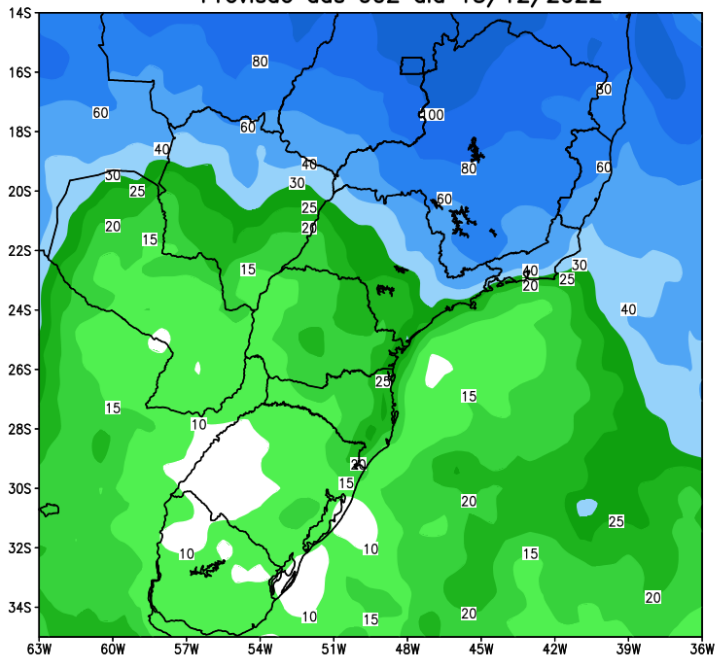
Previsão para as principais bacias

GEFS / Bacia do Parana
Precipitacao acumulada em 7 dias (mm)
Previsao das 00Z dia 15/12/2022

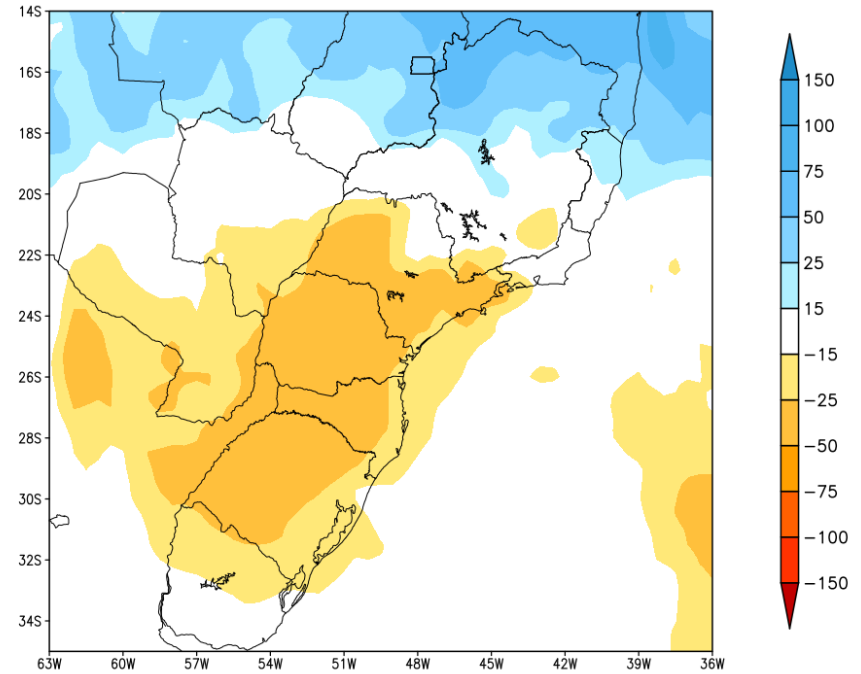


Tendência para a segunda semana

GEFS / BRASIL_SUL
Precipitacao acumulada 2aSem (mm)
Previsao das 00Z dia 15/12/2022



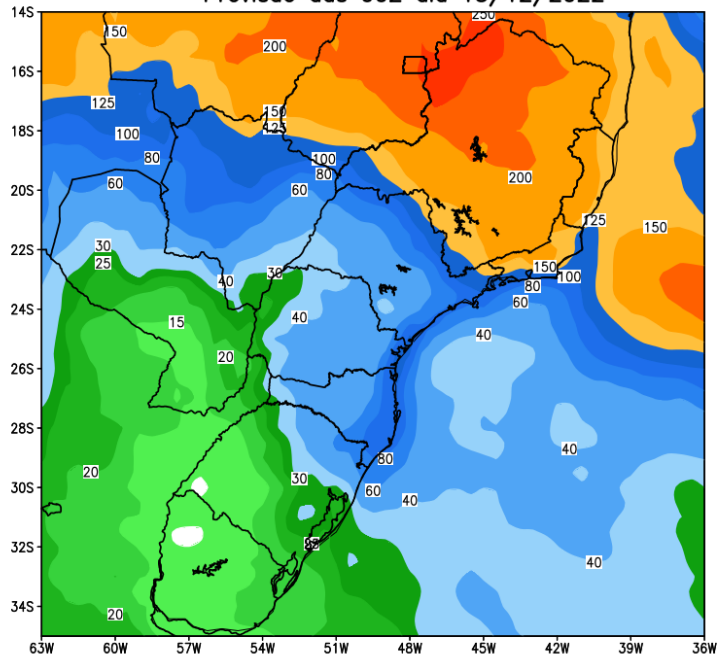
Anomalia de Precipitacao BR_SUL (mm)
Periodo: 2022122300 a 2022122900



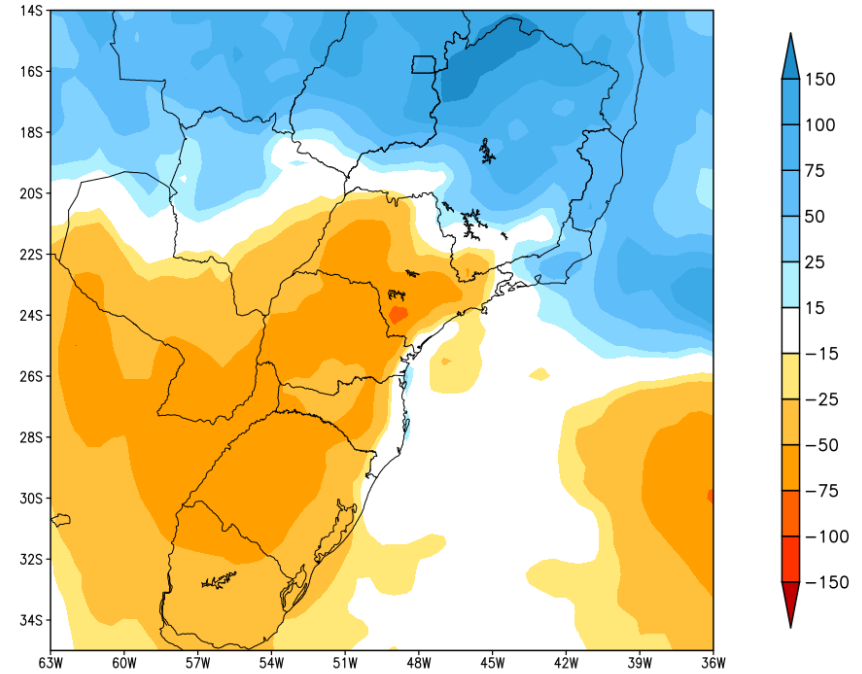
MODELO GFS

Tendência para as duas próximas semanas

GEFS / BRASIL_SUL
Precipitacao acumulada 14dias (mm)
Previsao das 00Z dia 15/12/2022



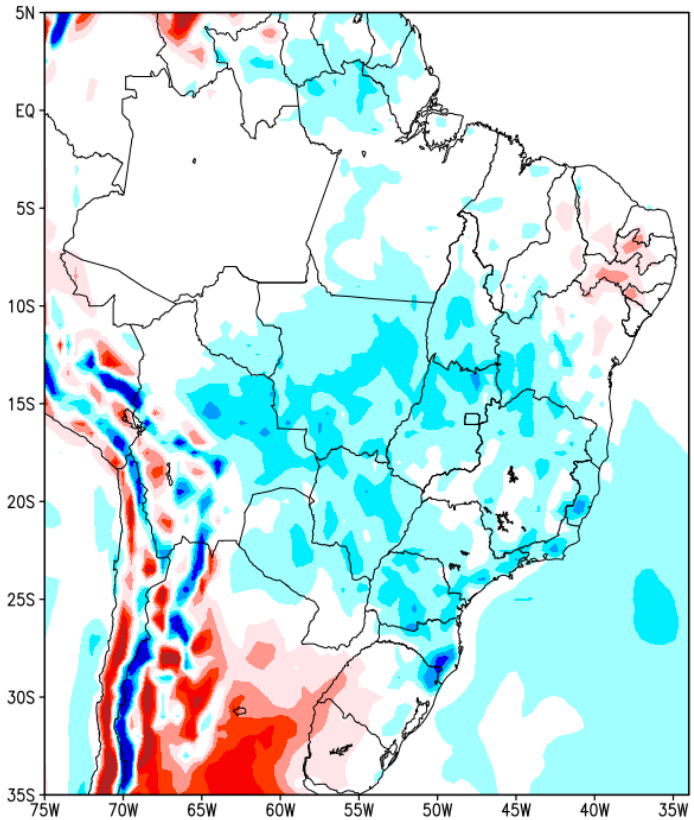
Anomalia de Precipitacao BR_SUL (mm)
Periodo: 2022121500 a 2022122900



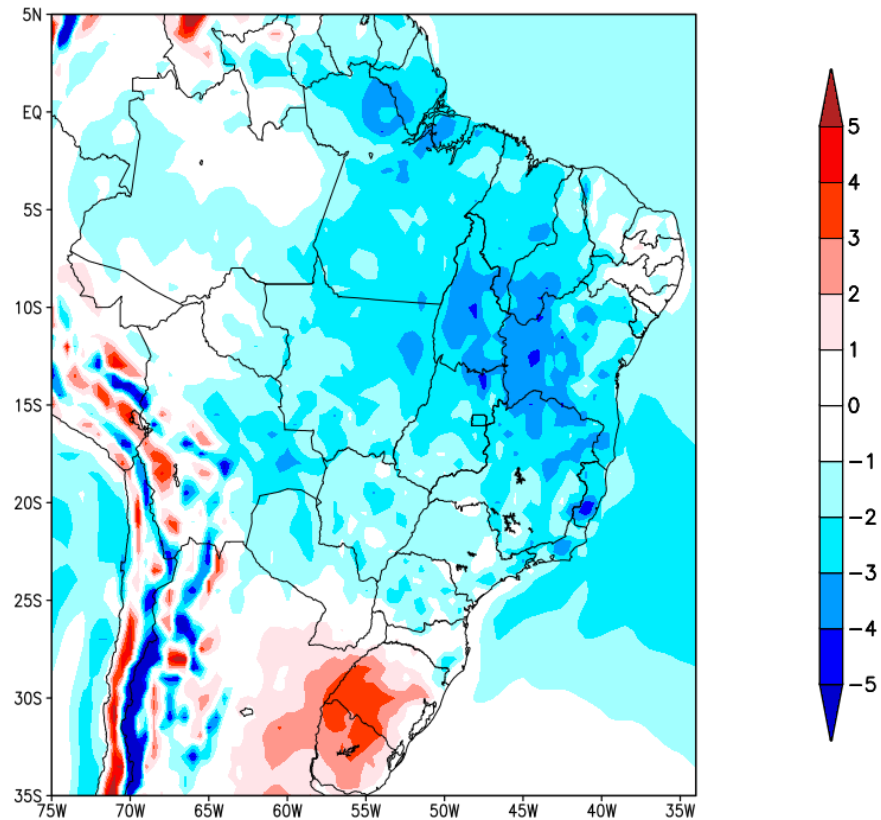
MODELO GFS

Previsão de Temperatura

Anomalia de Temperatura BR (C)
Período: 2022121500 a 2022122200



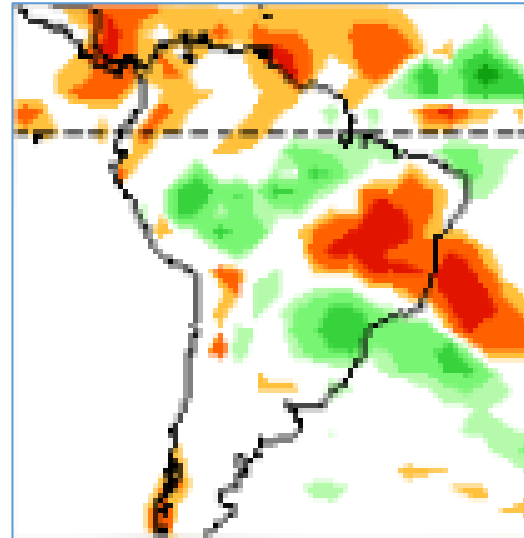
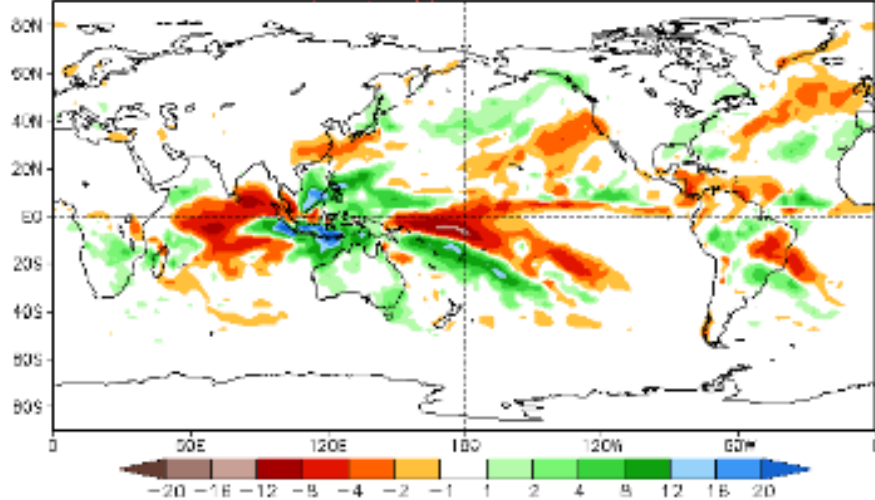
Anomalia de Temperatura BR (C)
Período: 2022122300 a 2022122900



Tendência 3a e 4a semanas

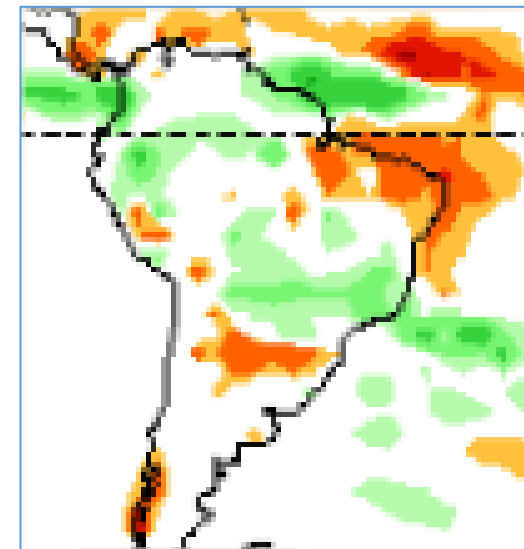
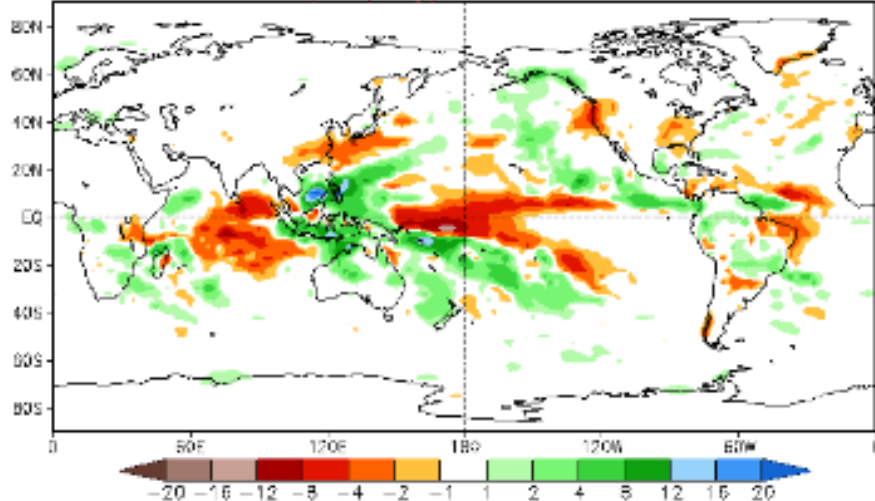
Week 3 Anomalies (mm/day)

29Dec2022-4Jan2023



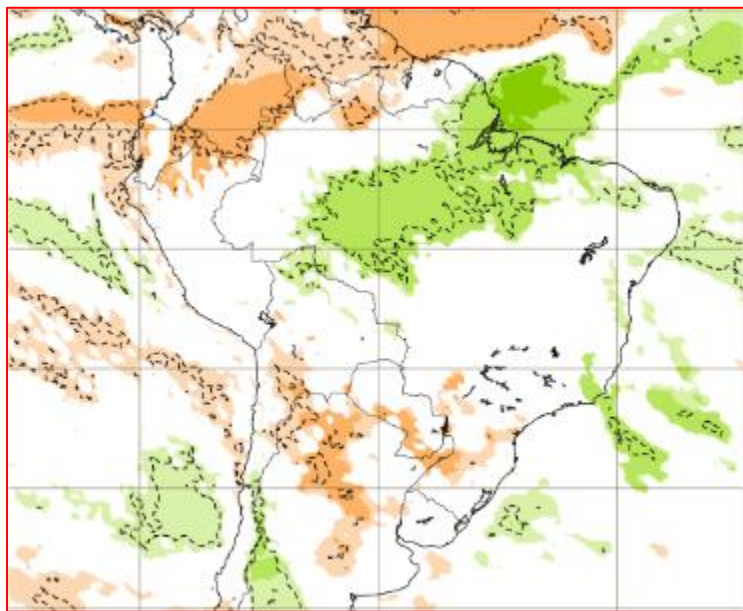
Week 4 Anomalies (mm/day)

5Jan2023-11Jan2023

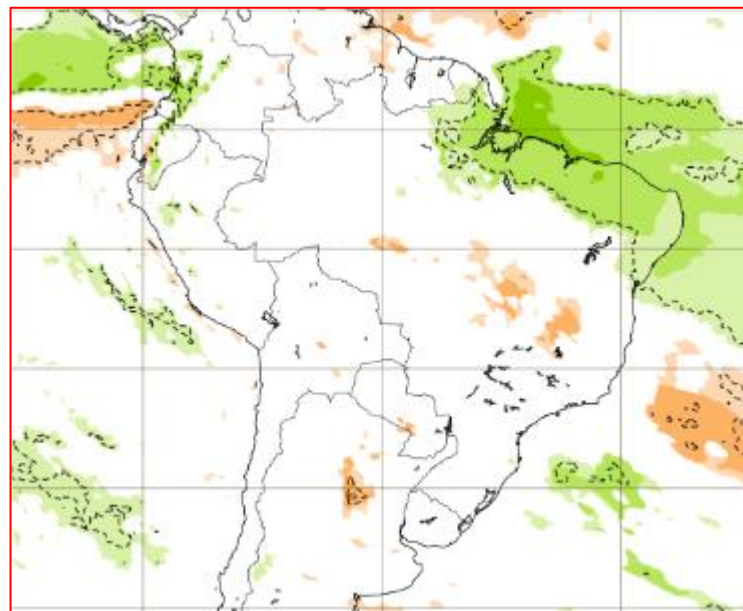


Tendência para 3ª e 4ª semanas

26/12-06/01

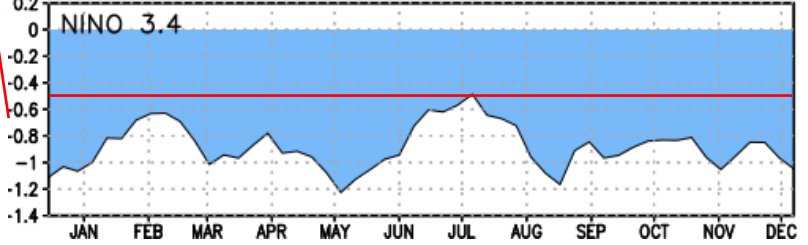
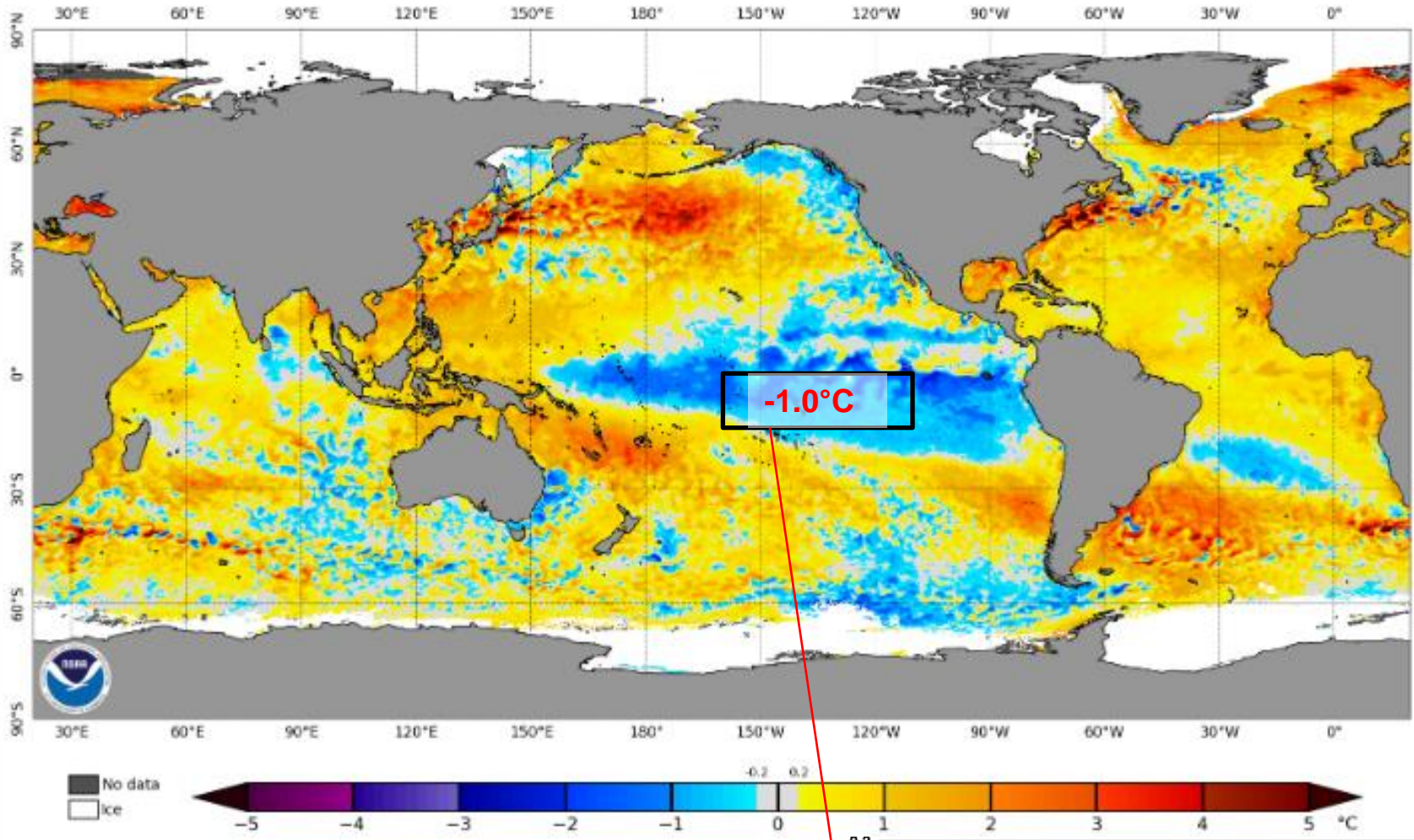


06-13/01



Status Atual: La Niña

NOAA Coral Reef Watch Daily 5km SST Anomalies (v3.1) 11 Dec 2022

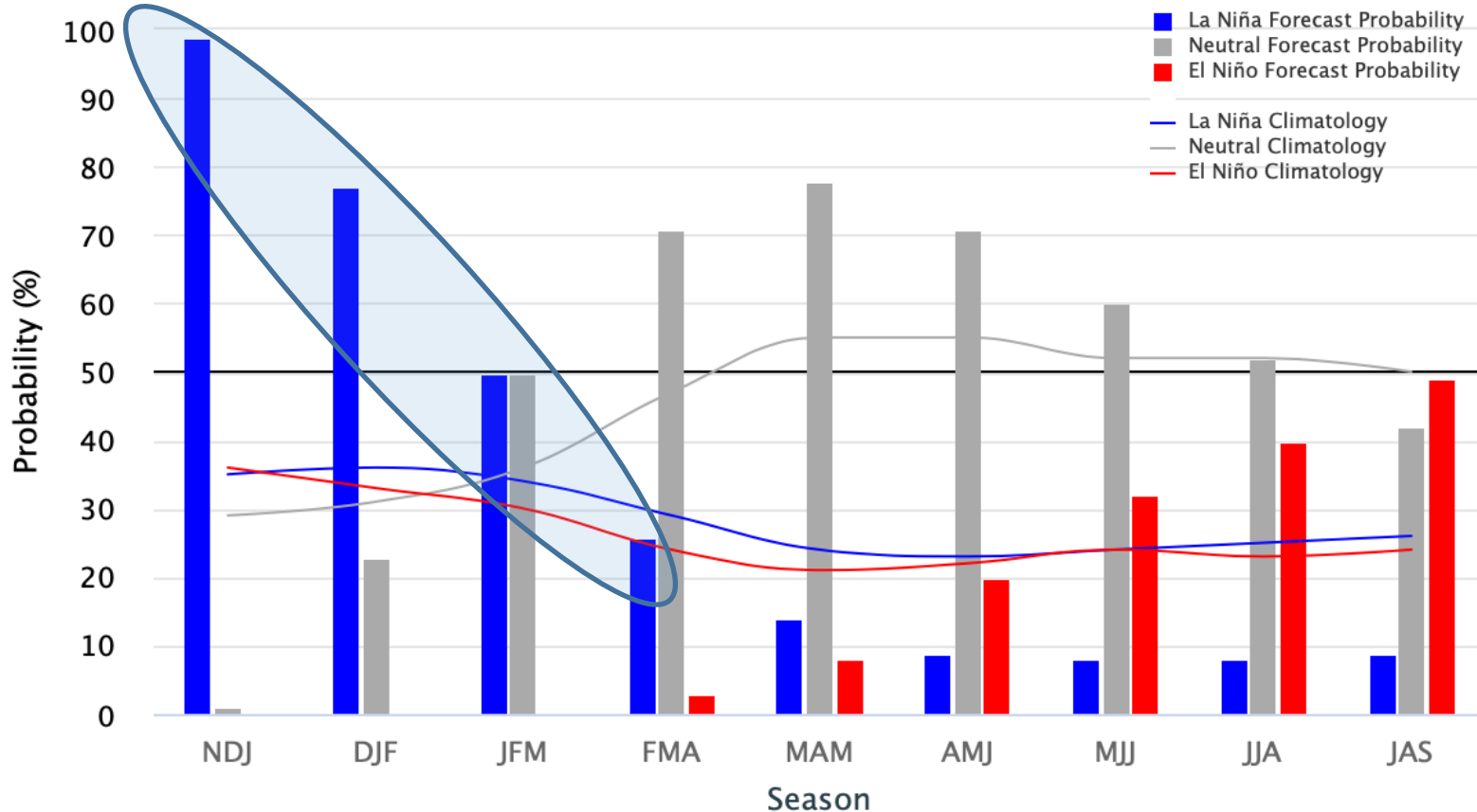


FONTE: NOAA

Previsão do “La Niña”

Early-December 2022 CPC Official Probabilistic ENSO Forecasts

ENSO state based on NINO3.4 SST Anomaly
Neutral ENSO: $-0.5\text{ }^{\circ}\text{C}$ to $0.5\text{ }^{\circ}\text{C}$



Status Atual: **La Niña**

FONTE: NOAA

Previsão sazonal de Chuva JFM

