

Monitoramento da situação da seca na Região Sul

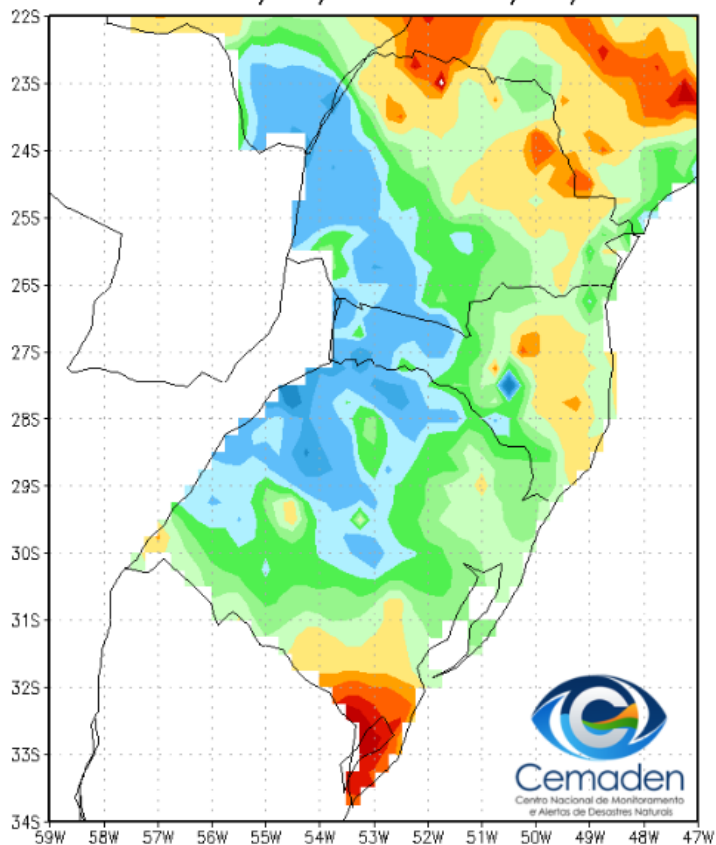


Cemaden
Centro Nacional de Monitoramento
e Alertas de Desastres Naturais

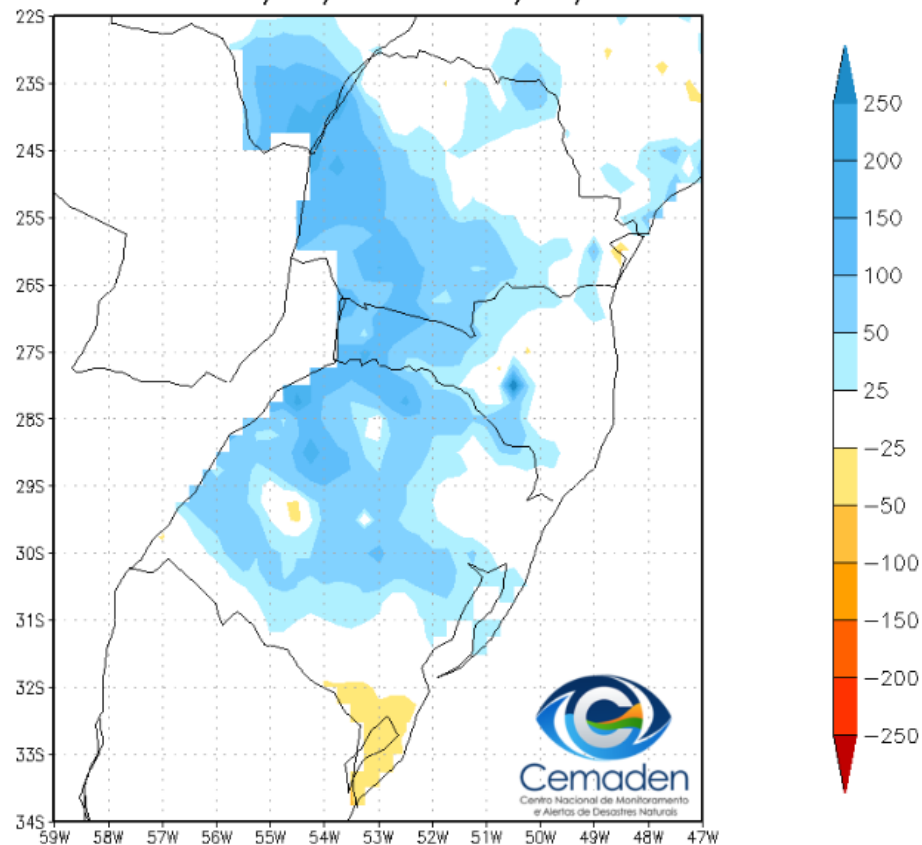
13 de Abril de 2022

Precipitação nos últimos 15 dias

Precipitação Acumulada (mm)
Período: 28/03/2022 a 12/04/2022

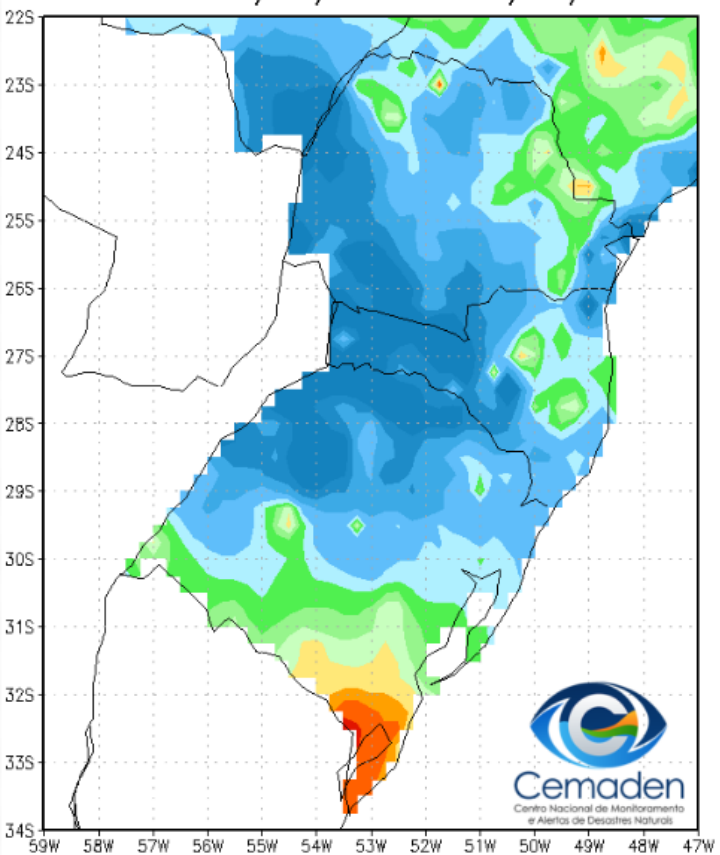


Anomalia de Precipitação (mm)
Período: 28/03/2022 a 12/04/2022

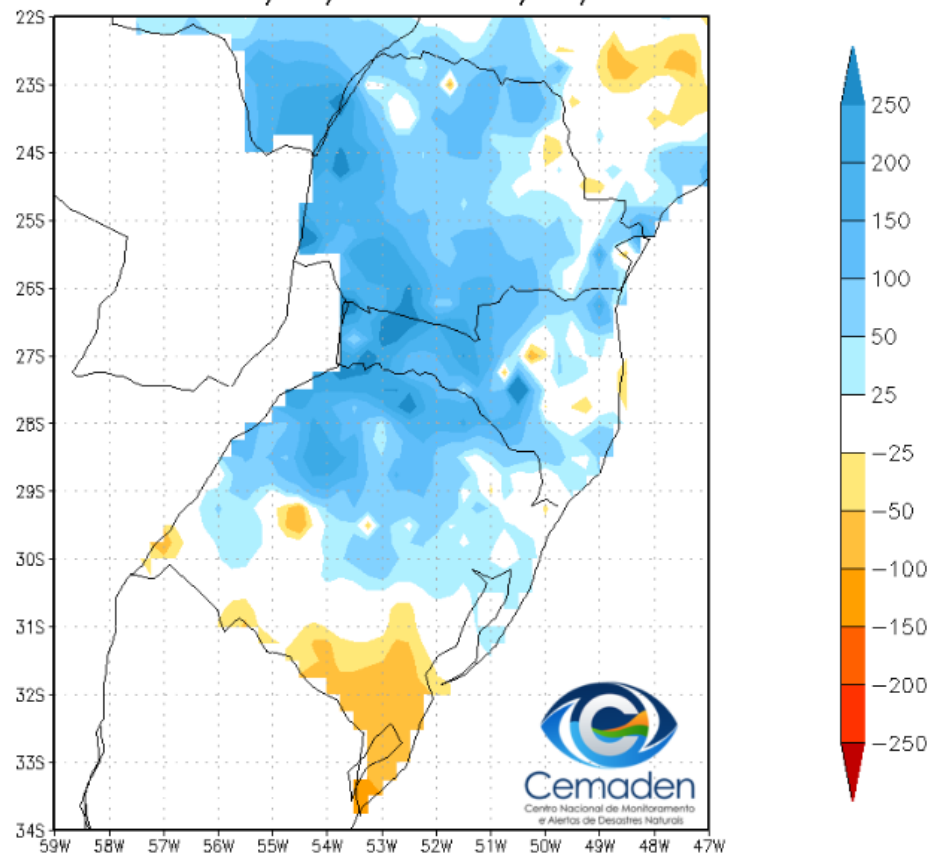


Precipitação nos últimos 30 dias

Precipitação Acumulada (mm)
Período: 13/03/2022 a 12/04/2022



Anomalia de Precipitação (mm)
Período: 13/03/2022 a 12/04/2022

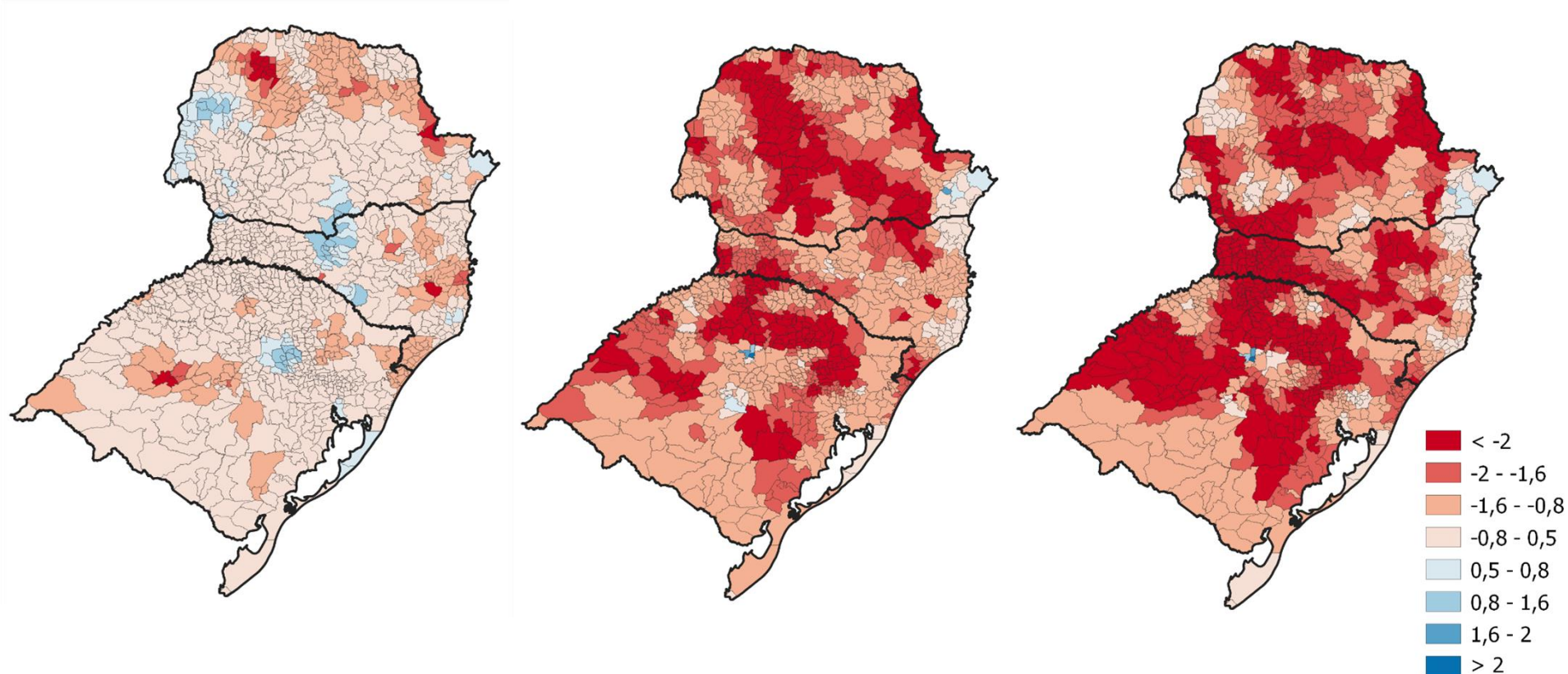


SPI: Março de 2022

SPI03

SPI12

SPI24

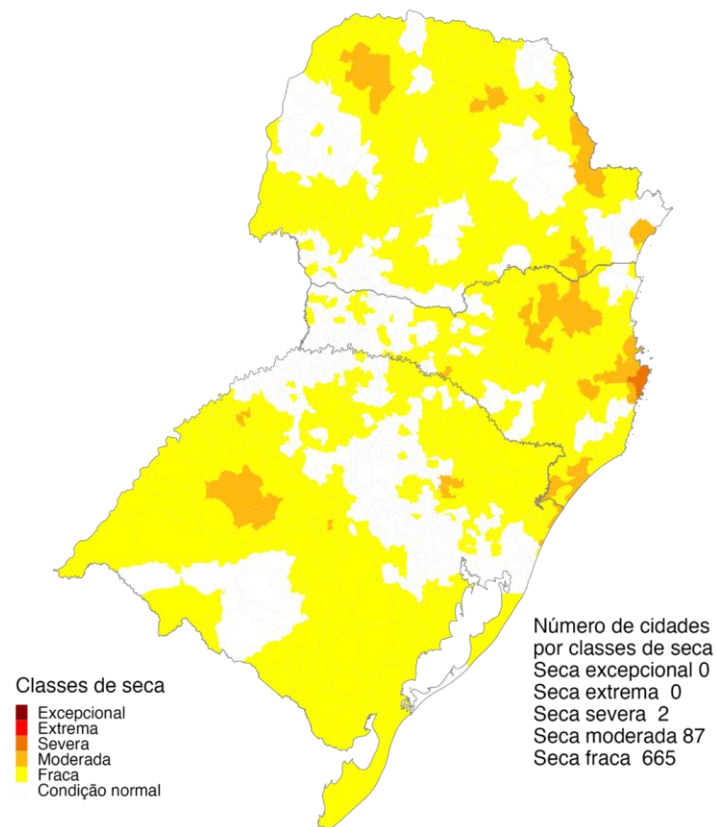
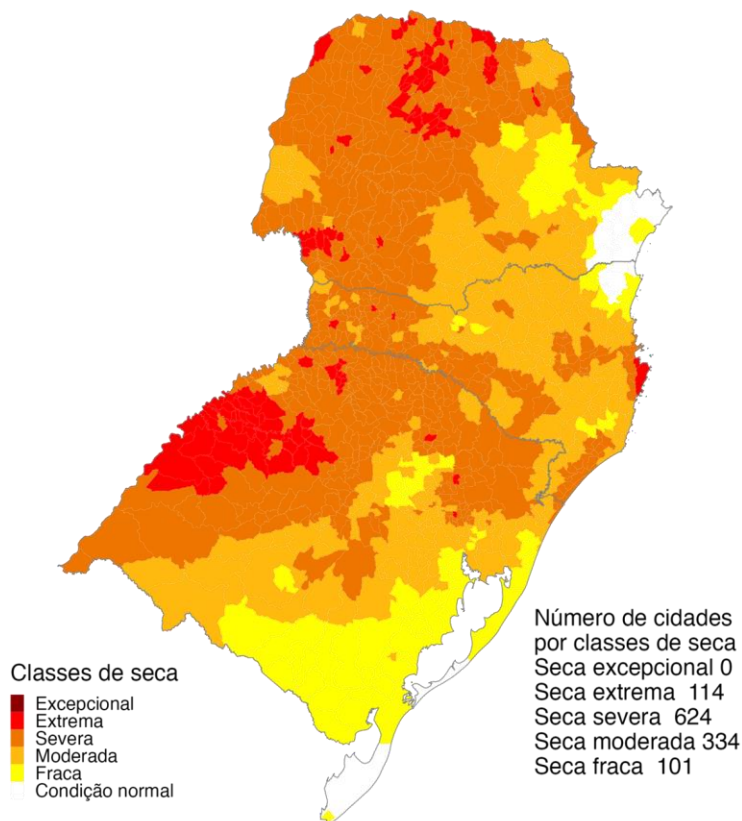


Fonte: Precipitação observada (CPTEC/INPE)

Índice Integrado de Seca – IIS (SPI, VHI, AUS)

13 de março de 2022

12 de abril de 2022

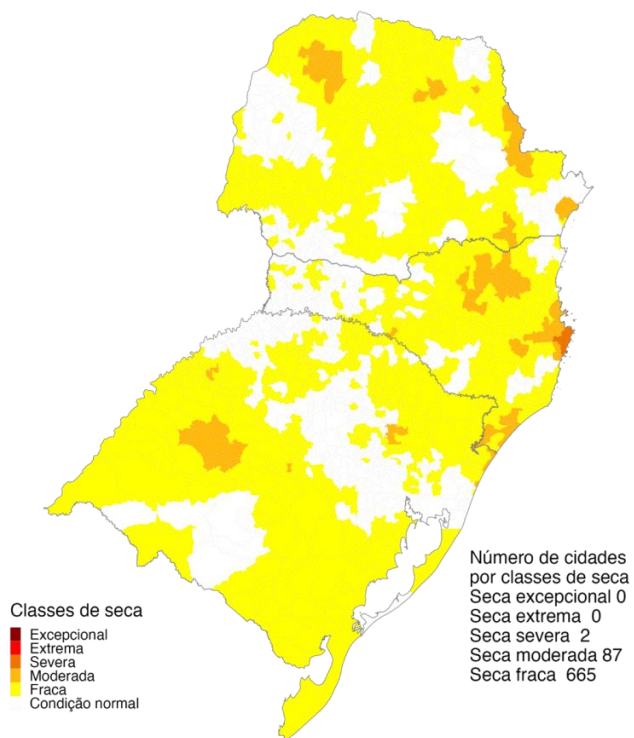


Fevereiro 2022
Índice Integrado de Seca (SPI3, VHI, AUS)
Dados: CPTEC/INPE - NOAA - NASA / Preparação: Cemaden/MCTI

Março 2022
Índice Integrado de Seca (SPI3, VHI, AUS)
Dados: CPTEC/INPE - NOAA - NASA / Preparação: Cemaden/MCTI

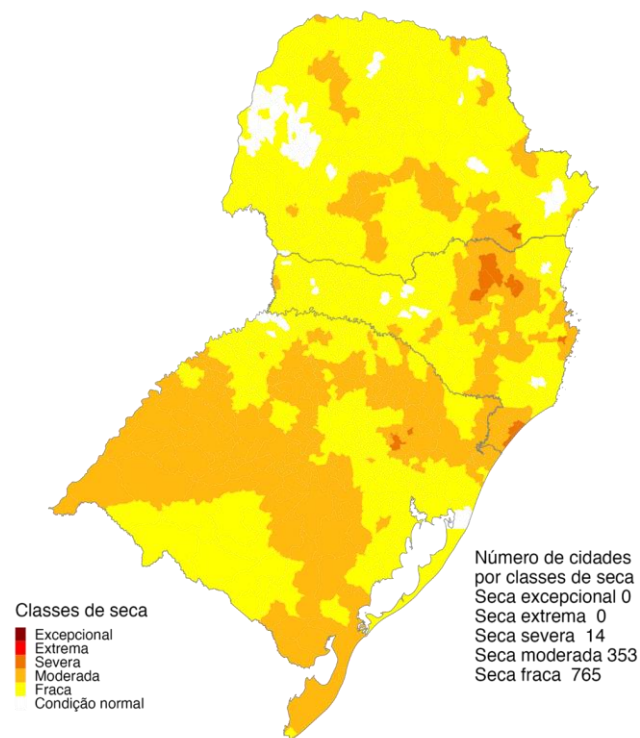
Índice Integrado de Seca – IIS nas escalas de 3 e 6 meses

IIS3



Março 2022
Índice Integrado de Seca (SPI3, VHI, AUS)
Dados: CPTEC/INPE - NOAA - NASA / Preparação: Cemaden/MCTI

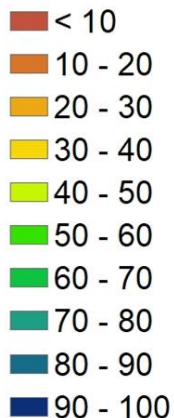
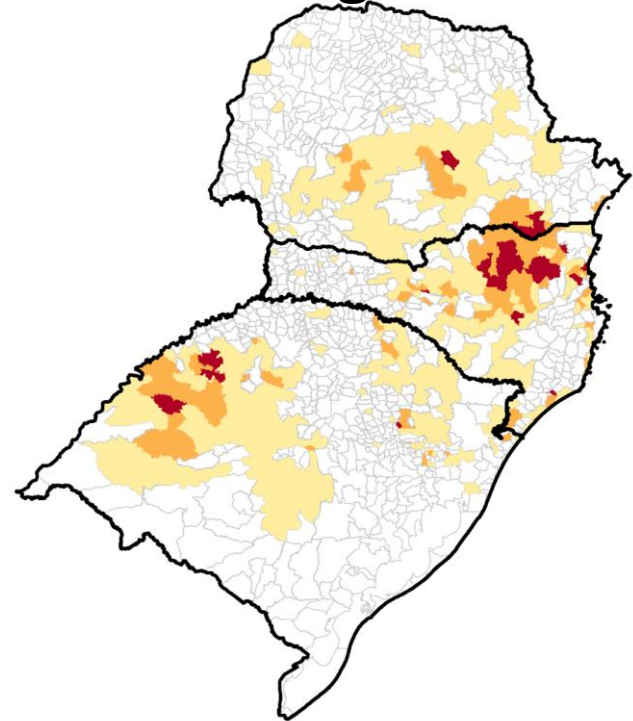
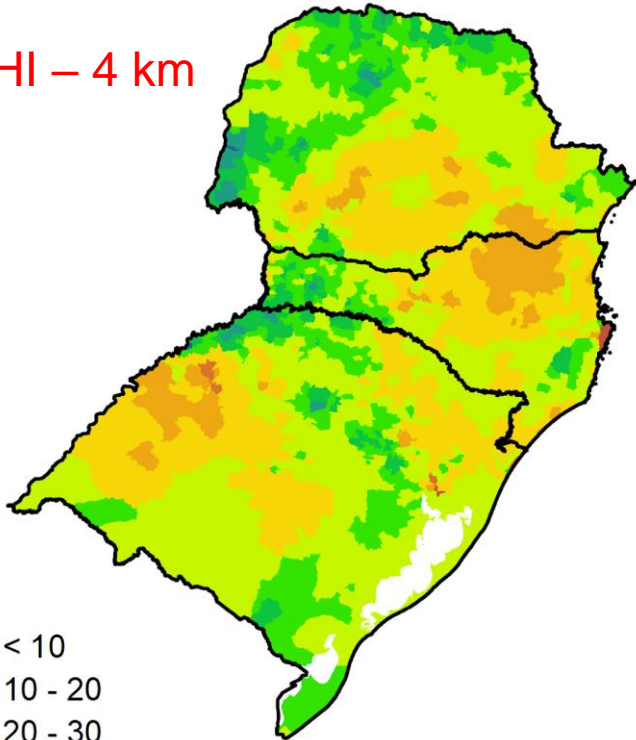
IIS6



Março 2022
Índice Integrado de Seca (SPI6, VHI, AUS)
Dados: CPTEC/INPE - NOAA - NASA / Preparação: Cemaden/MCTI

Áreas Agroprodutivas afetadas pela seca – Região Sul: 08/04

VHI – 4 km



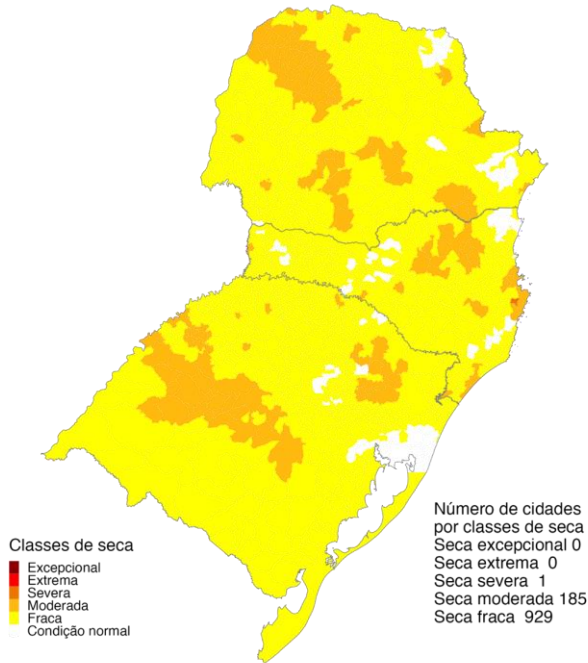
UF	40 a 60%		60 - 80%		> 80%	
	11/fev	08/abr	11/fev	08/abr	11/fev	08/abr
Paraná	62	68	76	12	130	4
Santa Catarina	49	64	26	43	35	17
Rio Grande do Sul	69	104	95	27	149	9

*Estimativa a partir dos dados do Cadastro Ambiental Rural para minifúndios, pequenas e médias propriedades e VHI (Satélite)

Cenários IIS: Região Sul: Maio/22

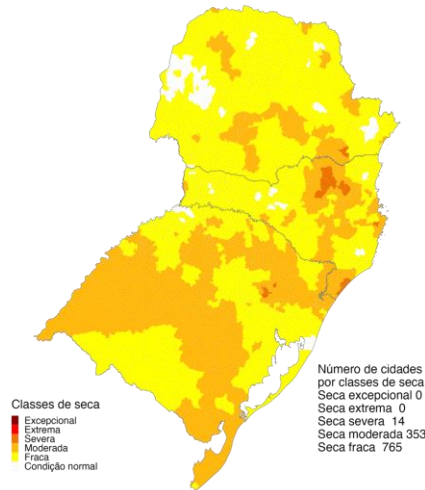
Chuva 30% ACIMA da média

Chuva 30% ABAIXO da média

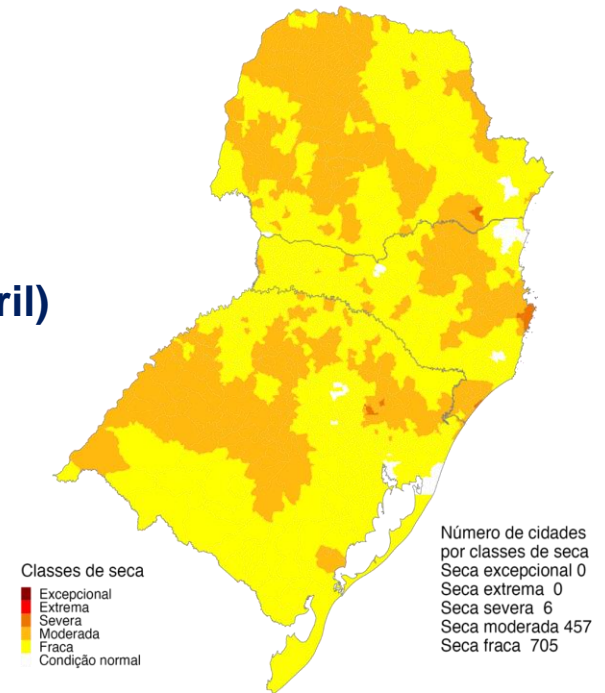


Março 2022
Índice Integrado de Seca (SPI6, VHI, AUS)
Cenário: Chuva + 30%
Dados: CPTEC/INPE - NOAA - NASA / Preparação: Cemaden/MCTI

IIS6 observado (12 de abril)

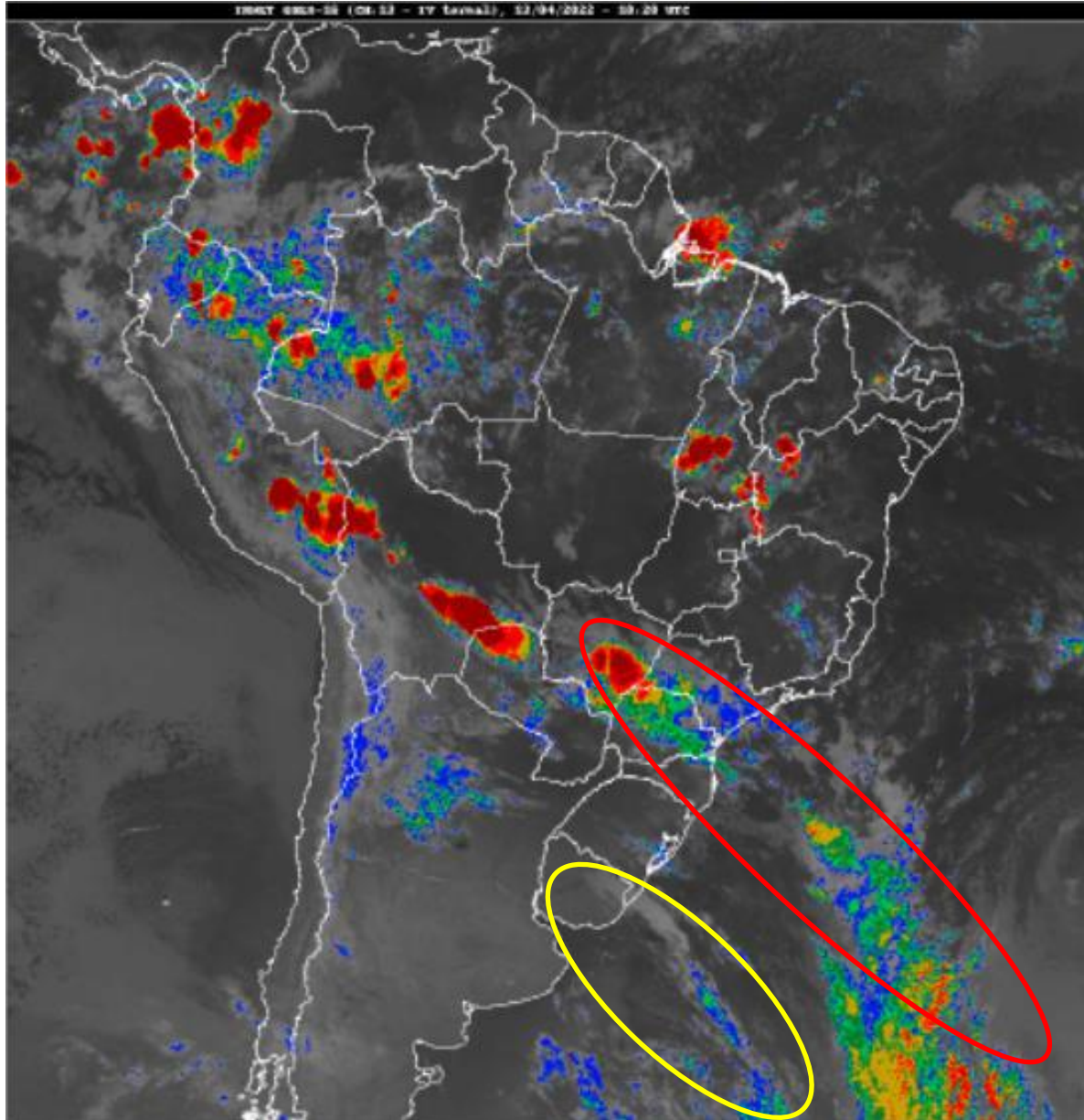


Março 2022
Índice Integrado de Seca (SPI6, VHI, AUS)
Dados: CPTEC/INPE - NOAA - NASA / Preparação: Cemaden/MCTI



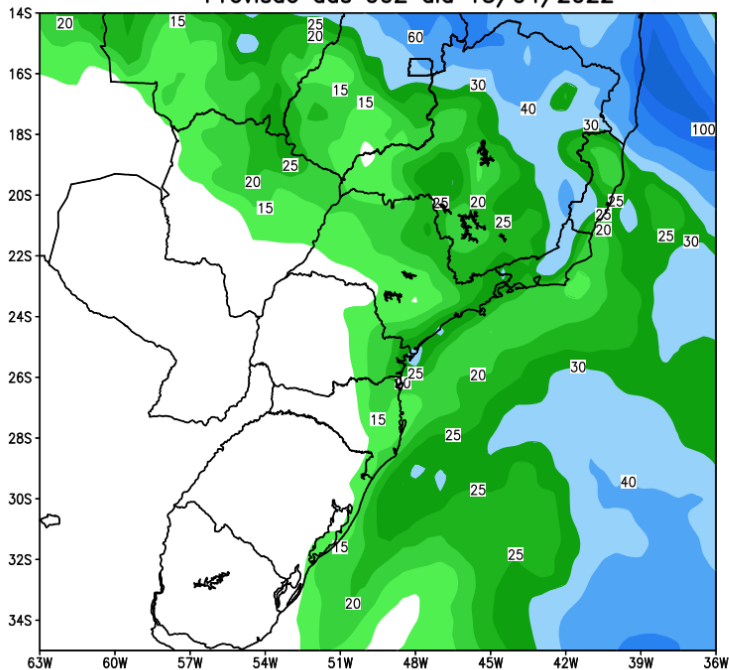
Março 2022
Índice Integrado de Seca (SPI6, VHI, AUS)
Cenário: Chuva - 30%
Dados: CPTEC/INPE - NOAA - NASA / Preparação: Cemaden/MCTI

Situação meteorológica atual

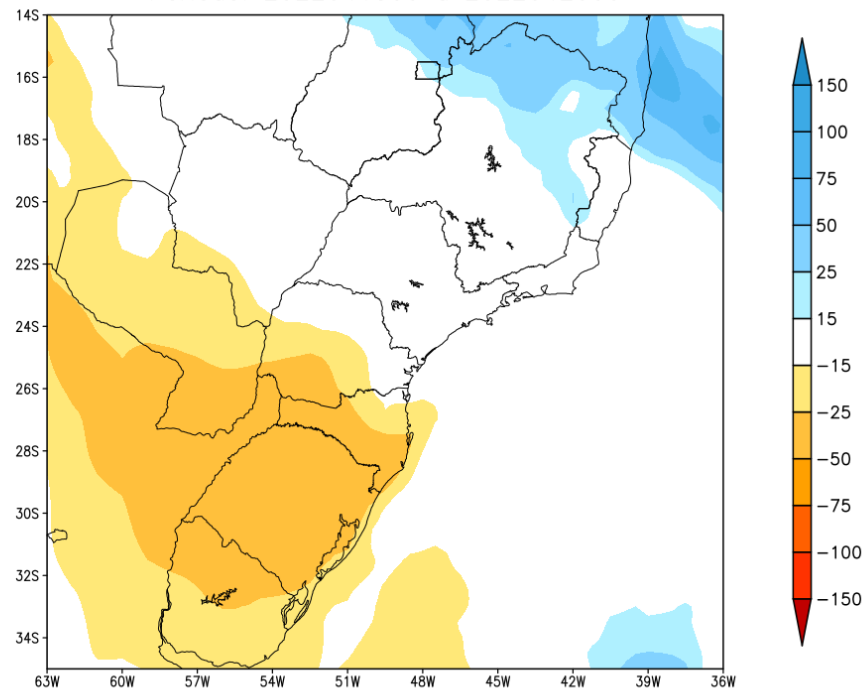


Previsão de chuva próximos 7 dias

GEFS / BRASIL_SUL
Precipitação acumulada 1aSem (mm)
Previsão das 00Z dia 13/04/2022



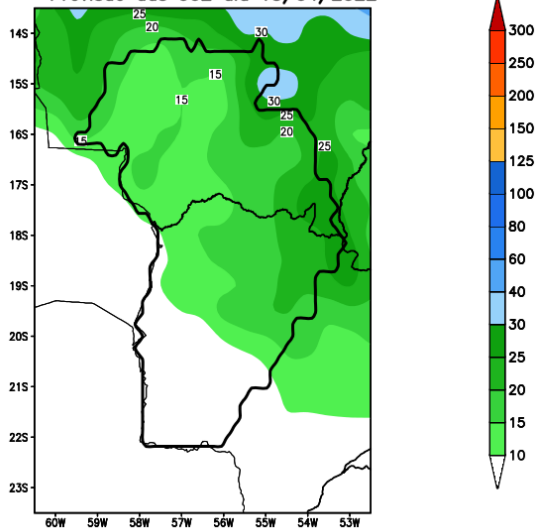
Anomalia de Precipitação BR_SUL (mm)
Período: 2022041300 a 2022042000



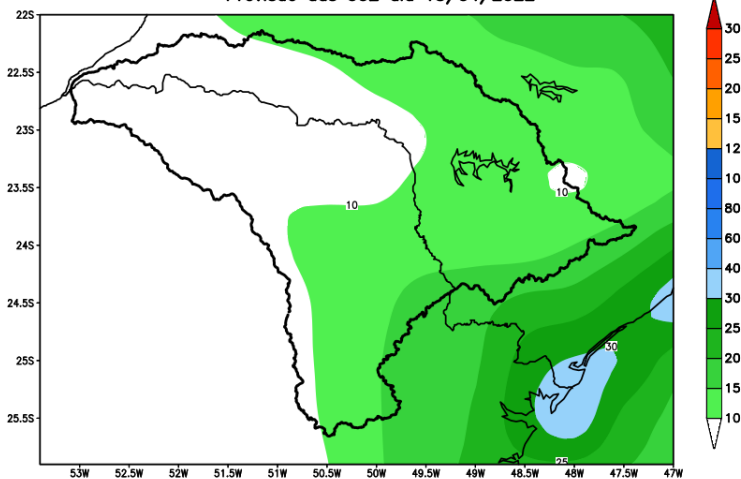
MODELO GFS

Previsão para as principais bacias

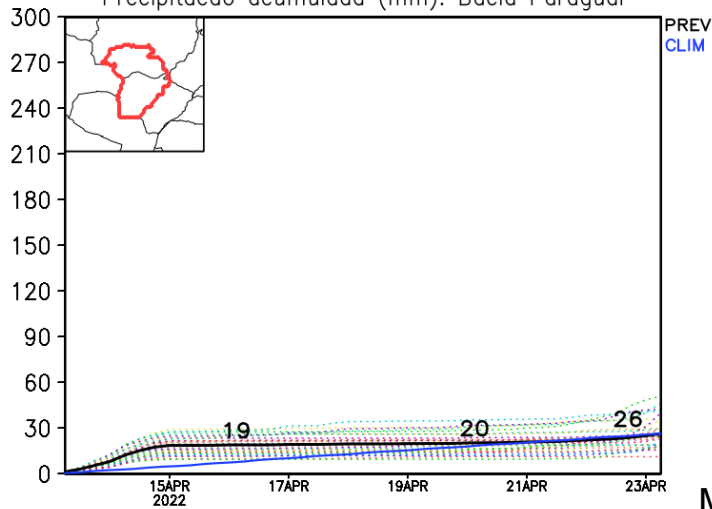
GEFS / Bacia do Rio Paraguai
Precipitação acumulada em 7 dias (mm)
Previsão das 00Z dia 13/04/2022



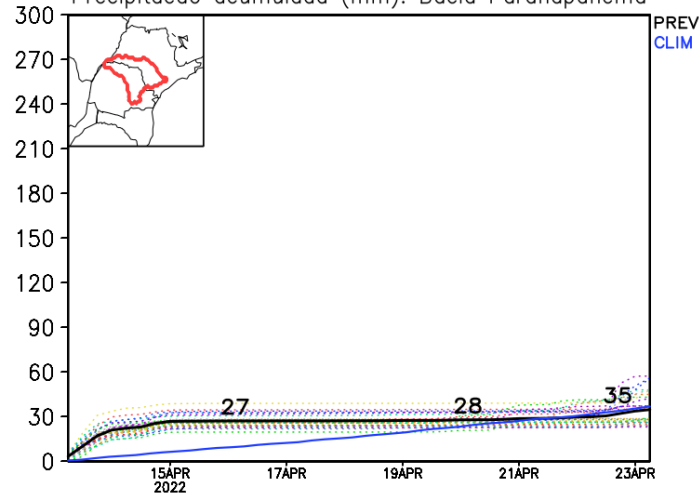
GEFS / Bacia do Rio Paranapanema
Precipitação acumulada em 7 dias (mm)
Previsão das 00Z dia 13/04/2022



Precipitação acumulada (mm): Bacia Paraguai

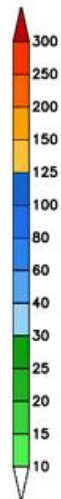
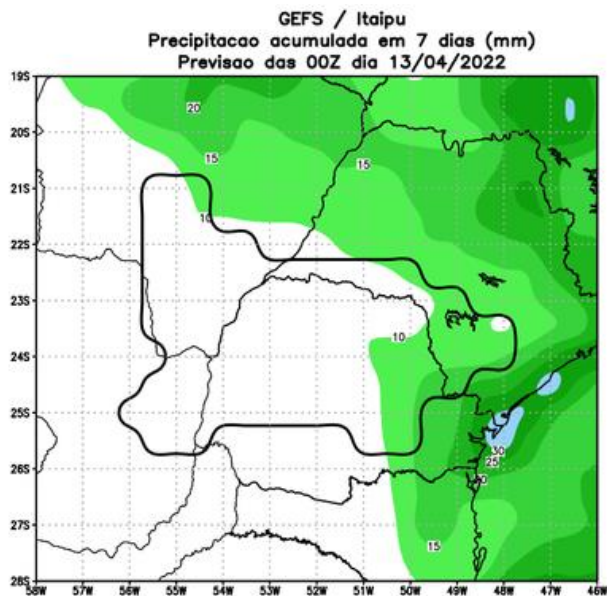


Precipitação acumulada (mm): Bacia Paranapanema

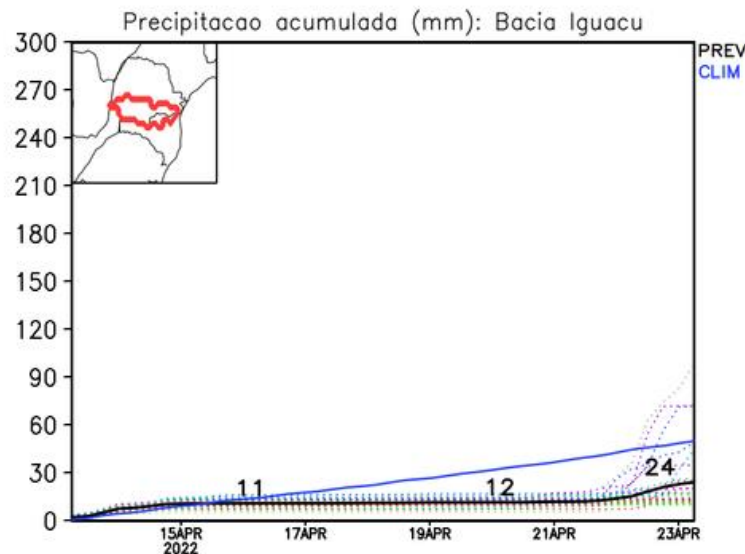
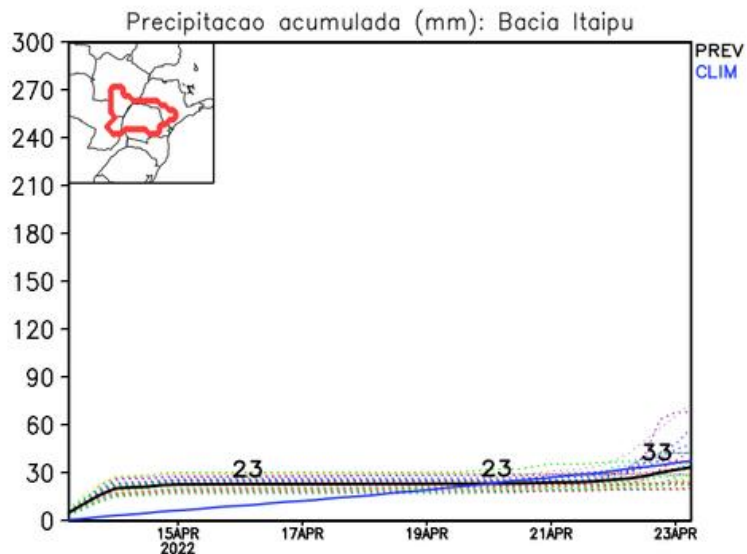
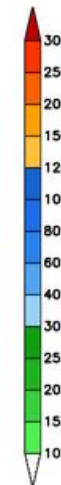
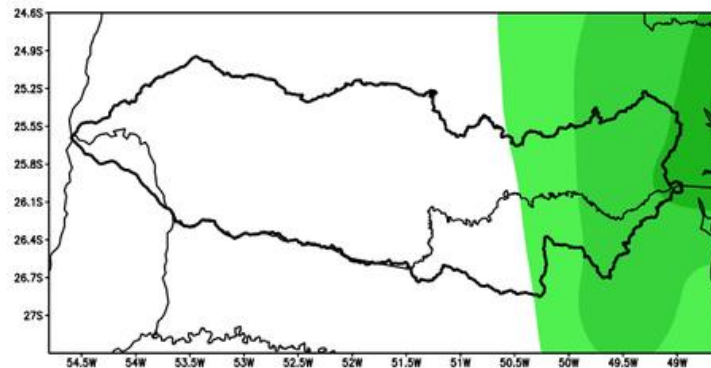


MODELO GFS

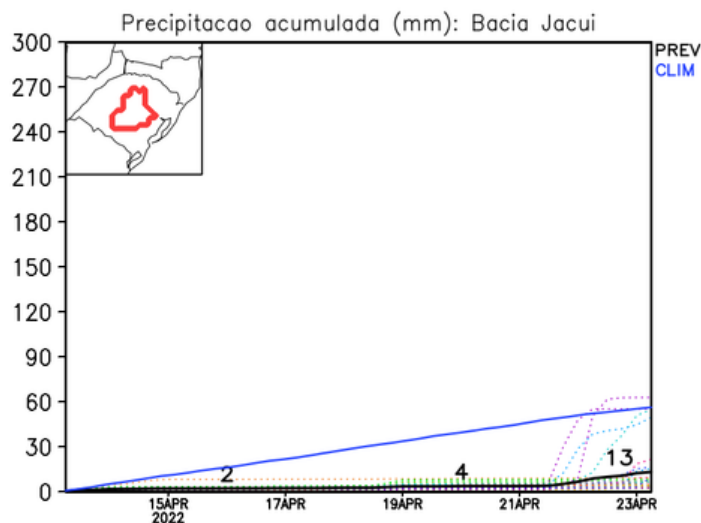
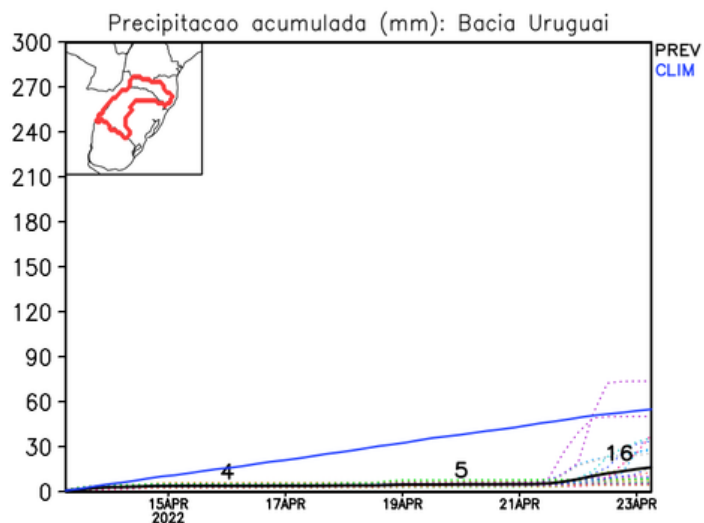
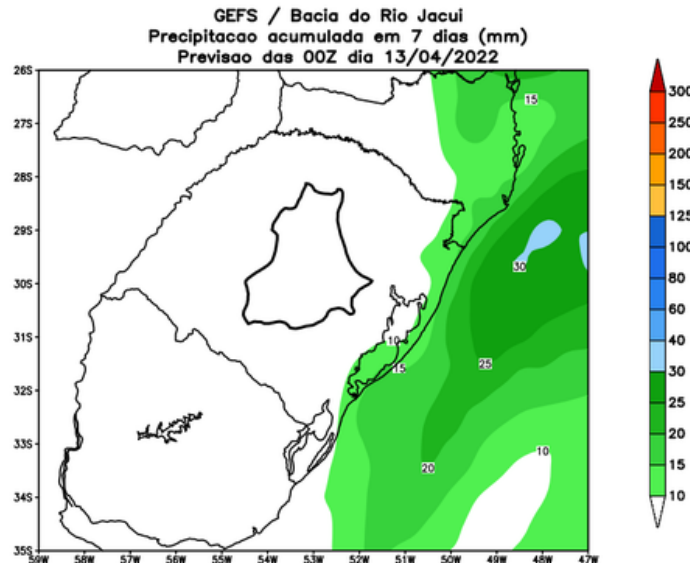
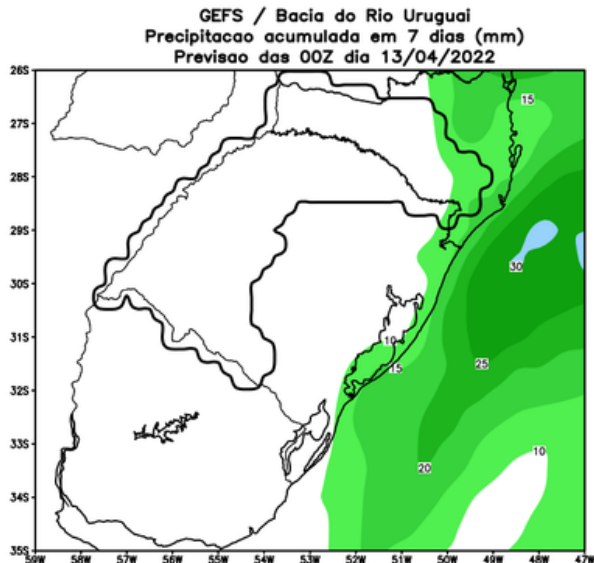
Previsão para as principais bacias



GEFS / Bacia do Rio Iguacu
Precipitacao acumulada em 7 dias (mm)
Previsao das 00Z dia 13/04/2022

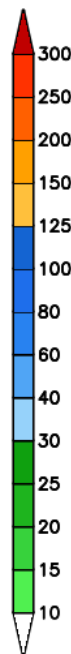
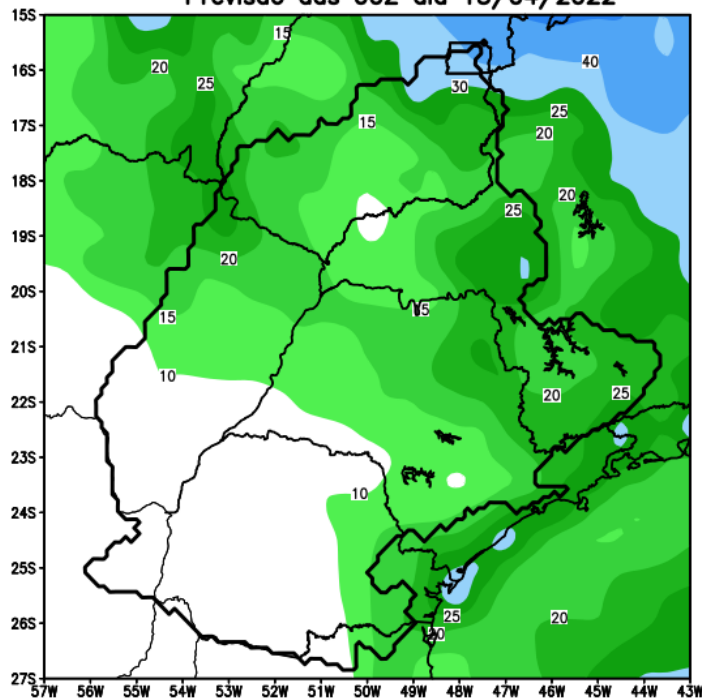


Previsão para as principais bacias

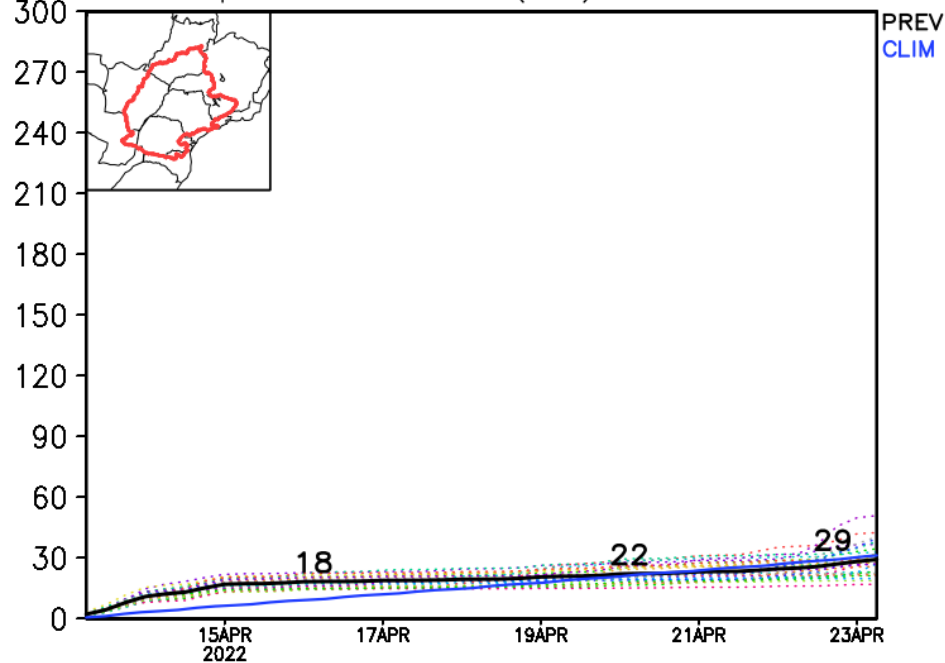


Previsão para as principais bacias

GEFS / Bacia do Parana
Precipitacao acumulada em 7 dias (mm)
Previsao das 00Z dia 13/04/2022

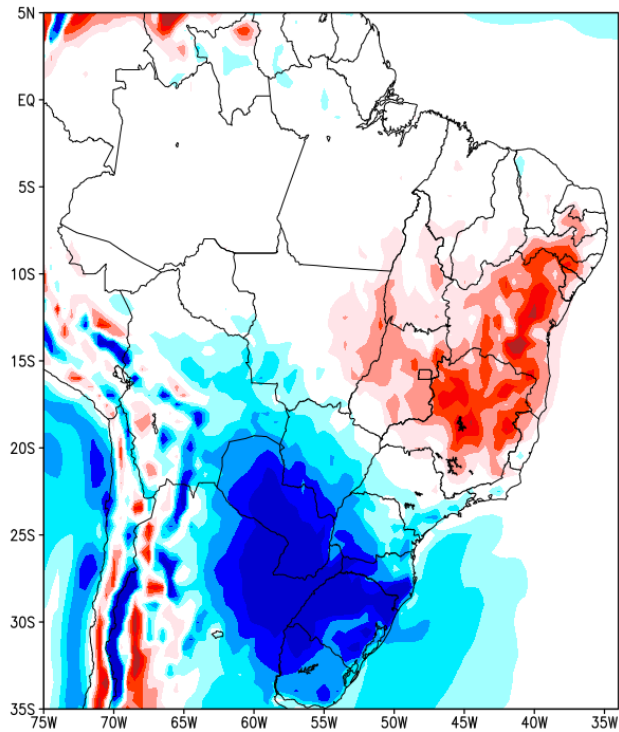


Precipitacao acumulada (mm): Bacia Parana

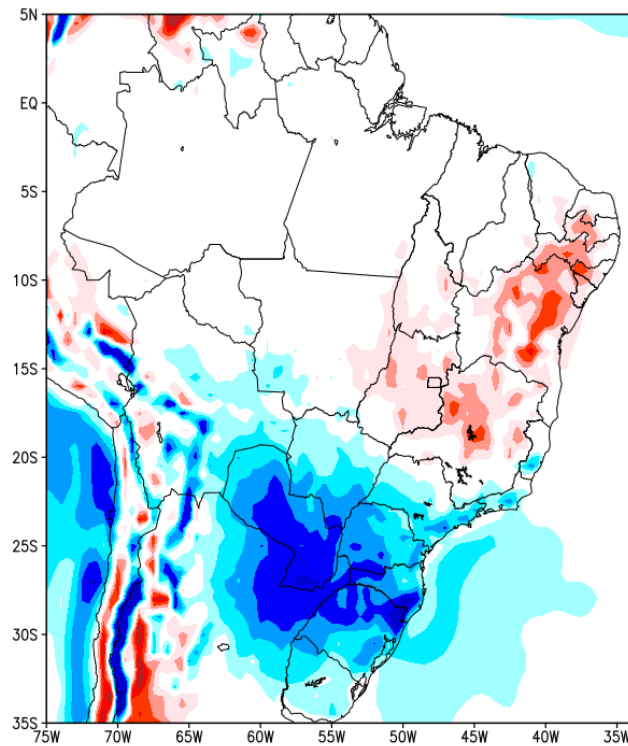


Previsão de Temperatura

Anomalia de Temperatura BR (C)
Período: 2022041300 a 2022041600

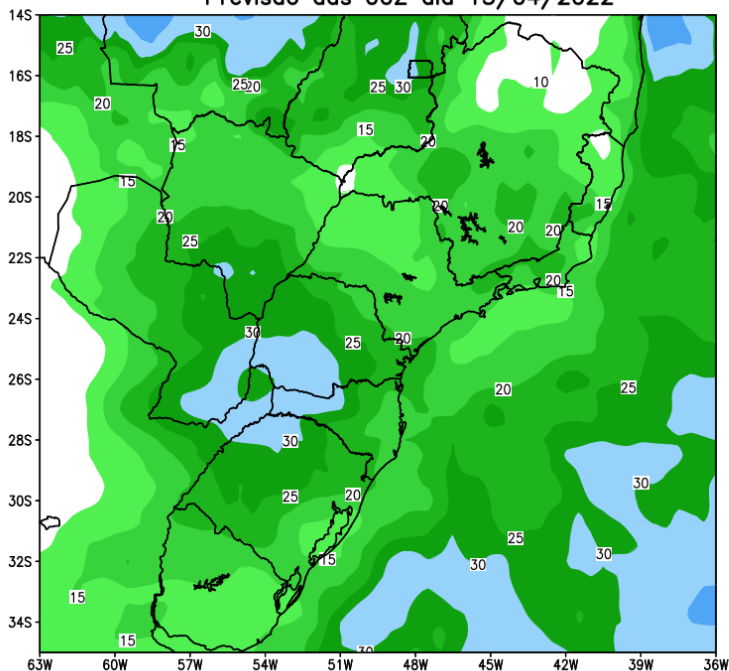


Anomalia de Temperatura BR (C)
Período: 2022041300 a 2022042000

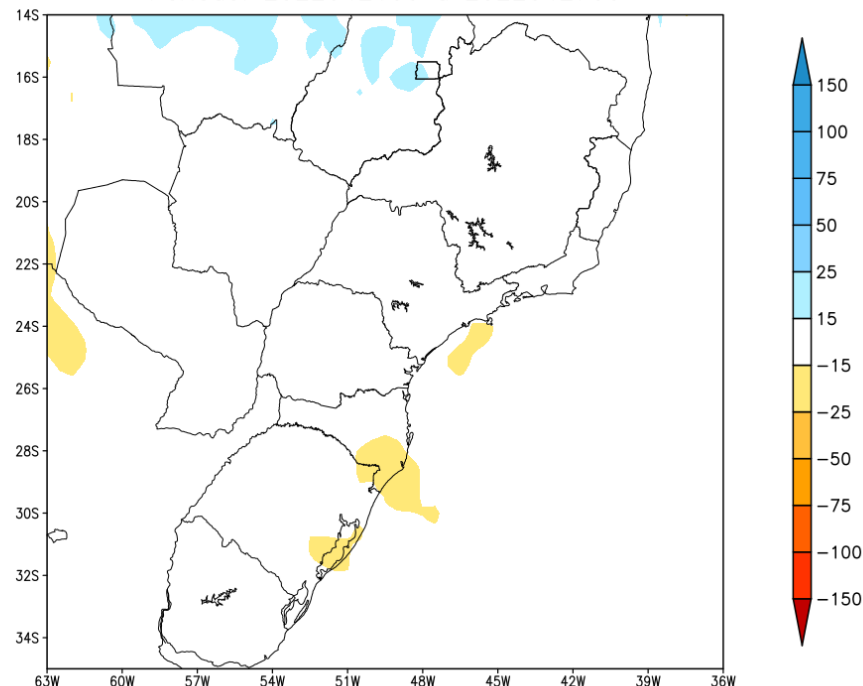


Tendência para a segunda semana

GEFS / BRASIL_SUL
Precipitação acumulada 2aSem (mm)
Previsão das 00Z dia 13/04/2022



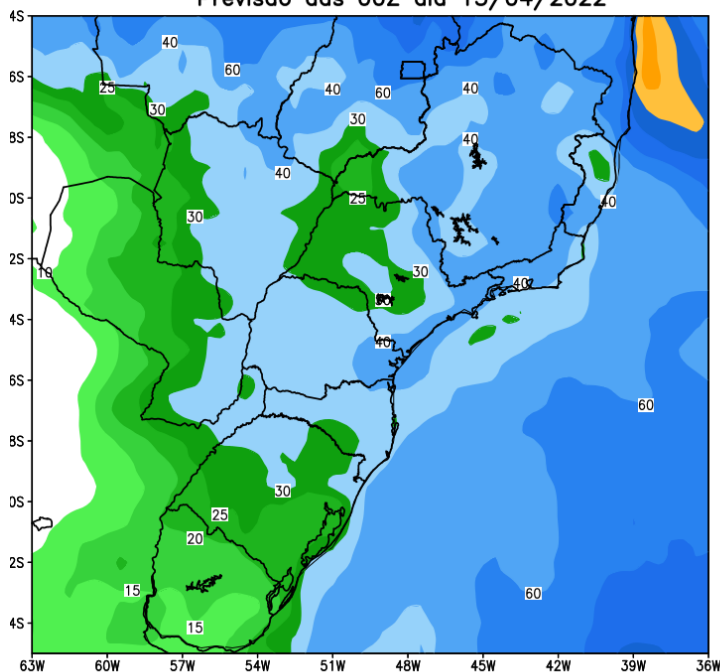
Anomalia de Precipitação BR SUL (mm)
Período: 2022042100 a 2022042700



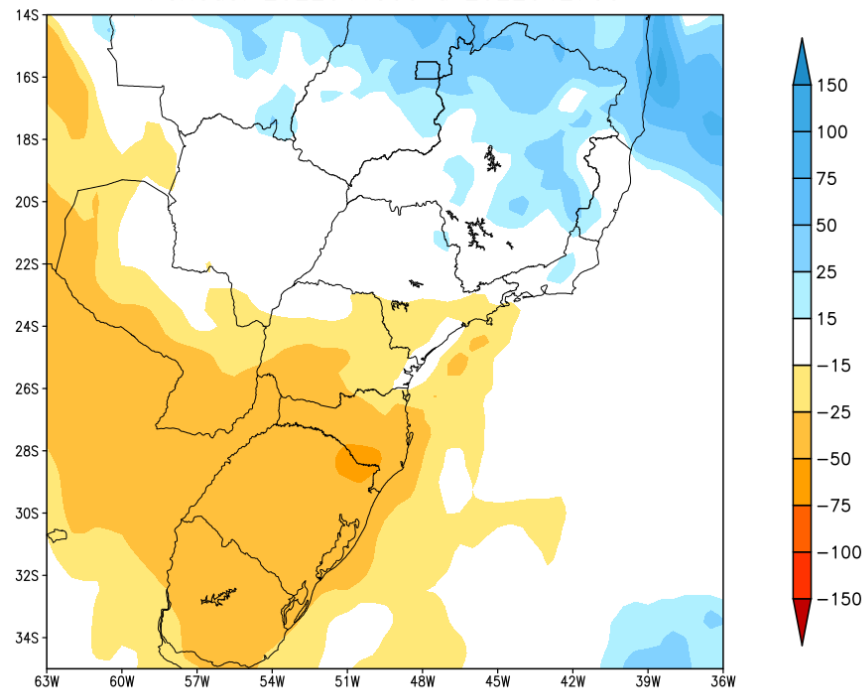
MODELO GFS

Tendência para as duas próximas semanas

GEFS / BRASIL_SUL
Precipitação acumulada 14 dias (mm)
Previsão das 00Z dia 13/04/2022



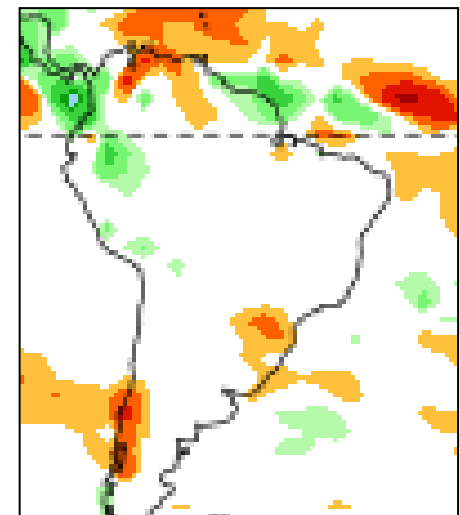
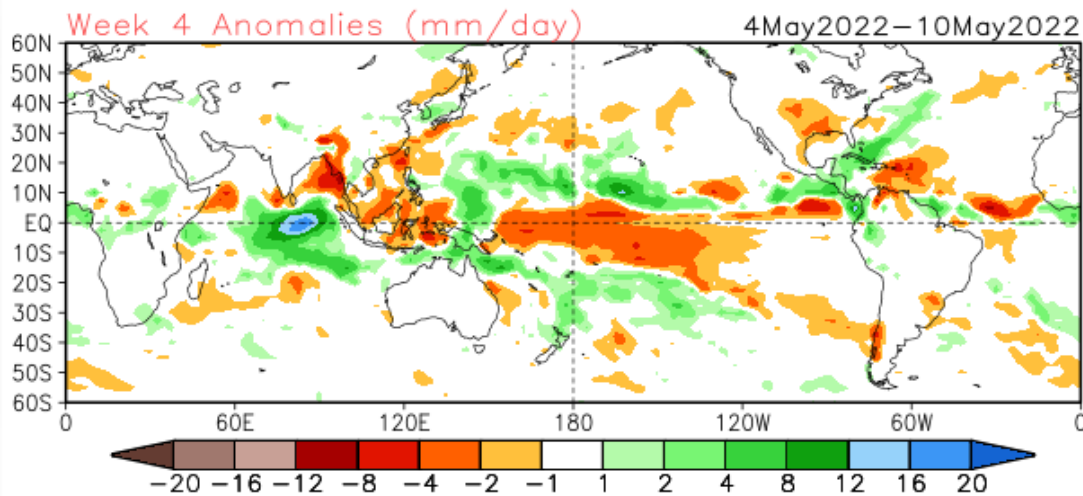
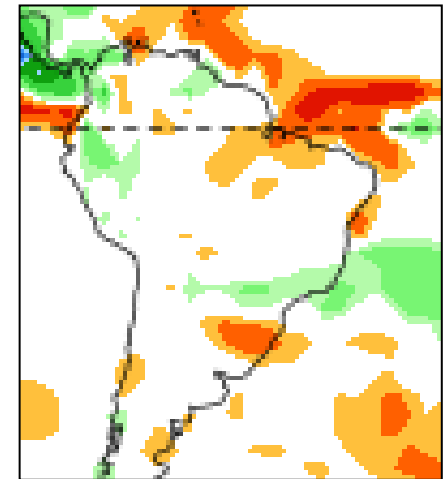
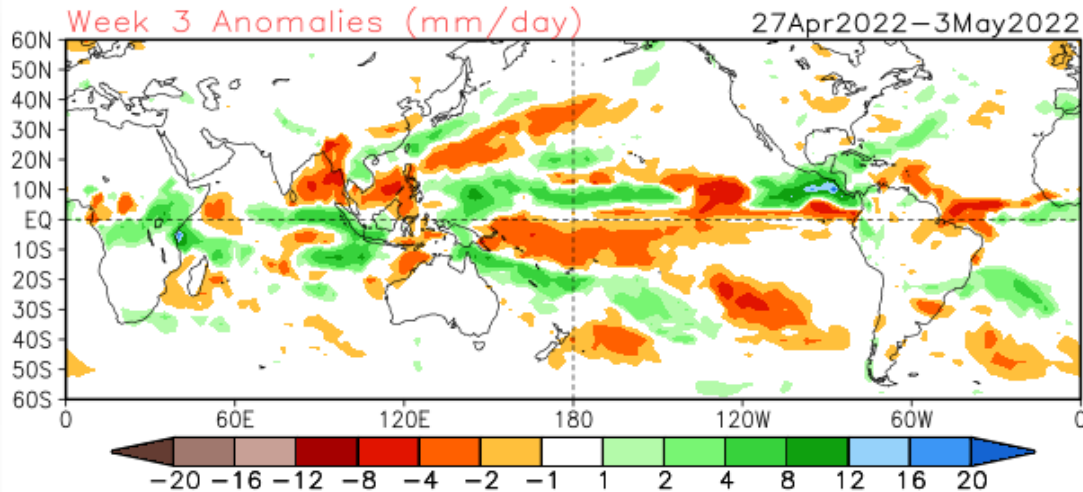
Anomalia de Precipitação BR SUL (mm)
Período: 2022041300 a 2022042700



MODELO GFS

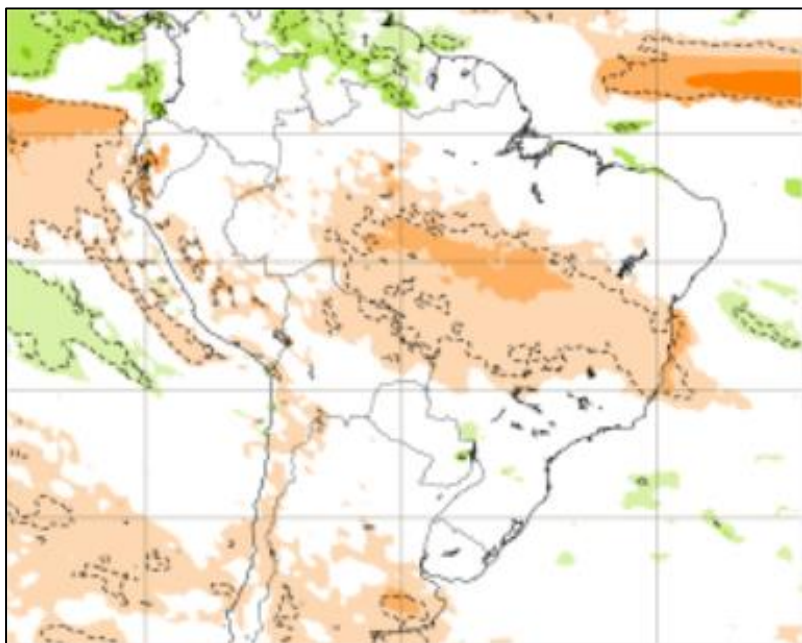
Tendência 3a e 4a semanas

16 Member Ensemble Mean Forecast from 12Apr2022

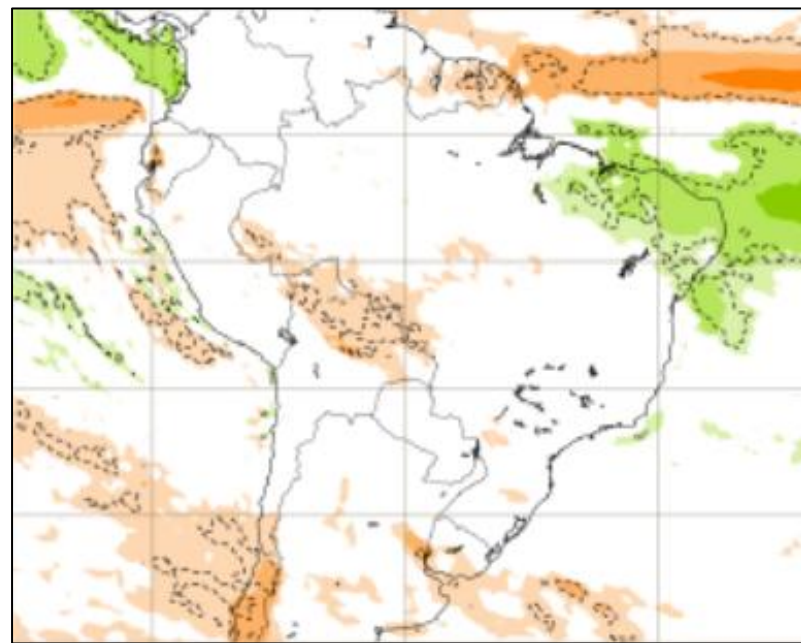


Tendência para 3ª e 4ª semanas

25/04/-02/05

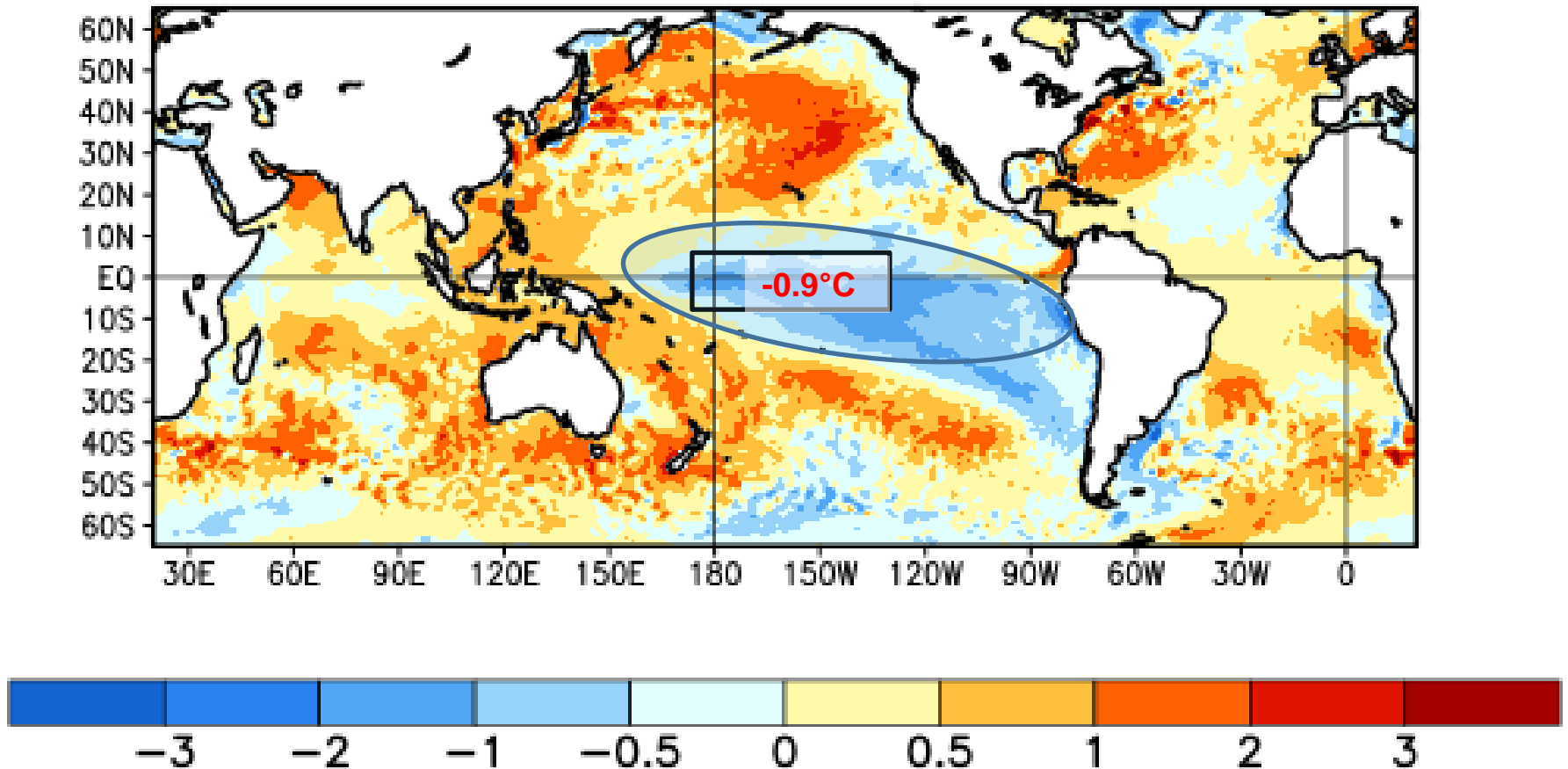


02-09/05

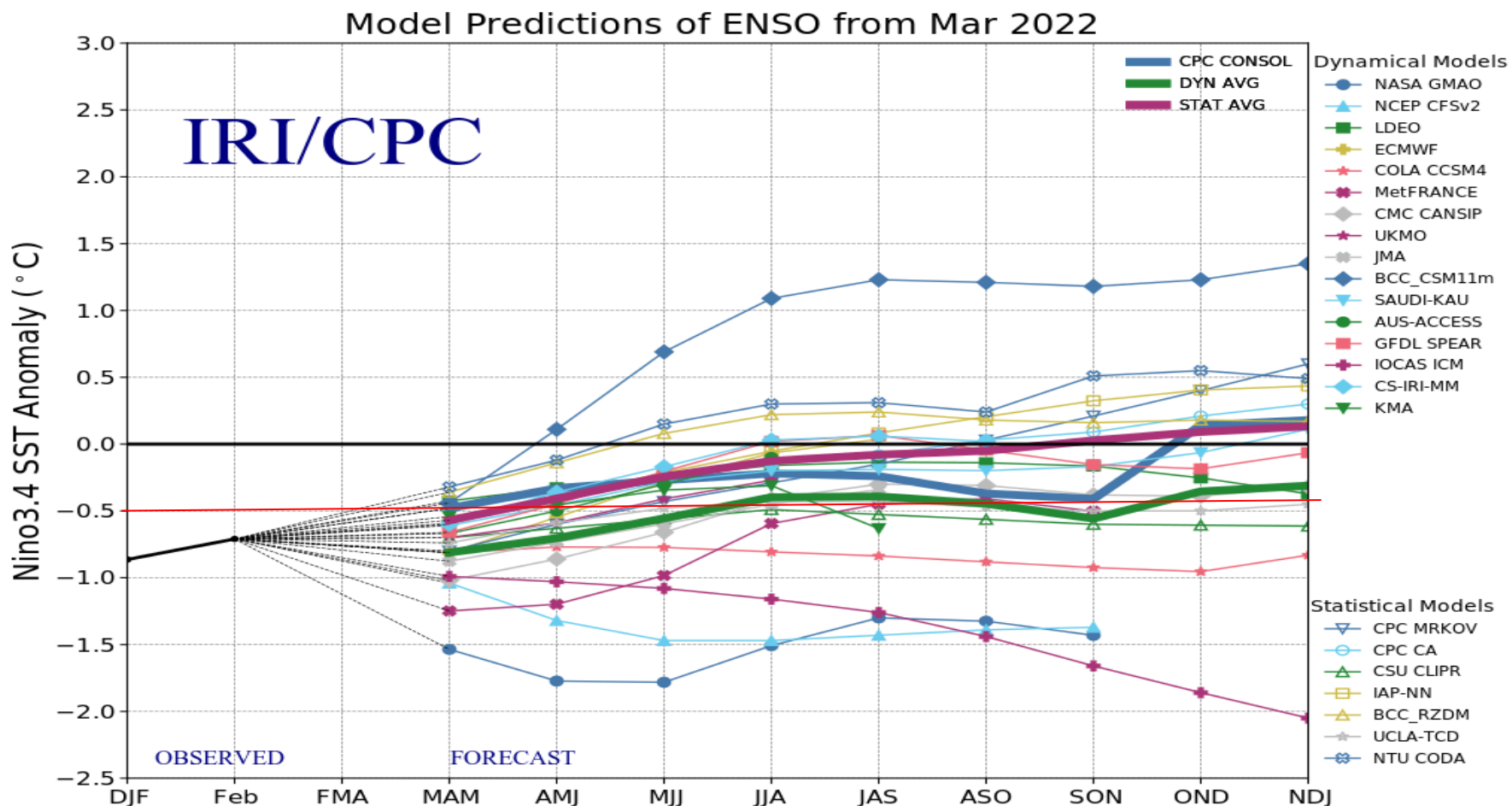


Status Atual: **La Niña**

Average SST Anomalies 13 MAR 2022 – 9 APR 2022



Previsão do “La Niña”



Status Atual: **La Niña**

FONTE: NOAA

Previsão sazonal de Chuva (AMJ)

