

Monitoramento, Previsões e Projeções para a Bacia do Rio São Francisco

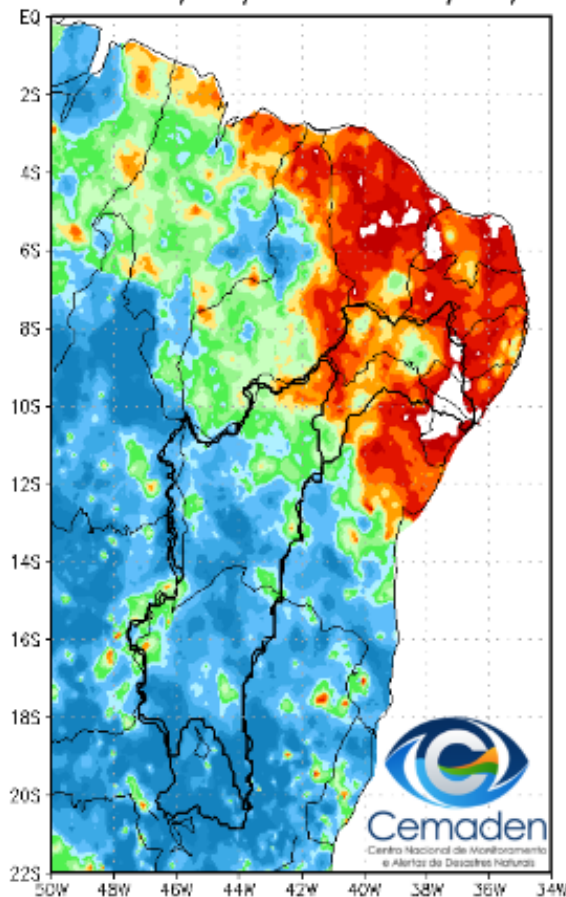


Cemaden
Centro Nacional de Monitoramento
e Alertas de Desastres Naturais

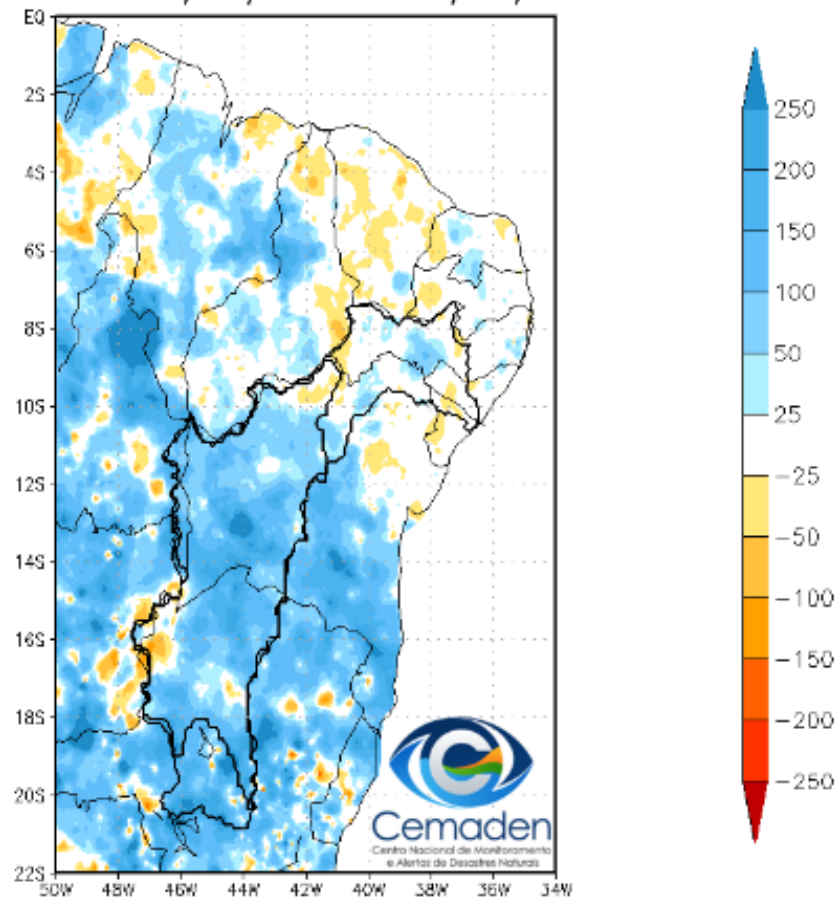
10 de Janeiro de 2023

Chuva dos últimos 30 dias

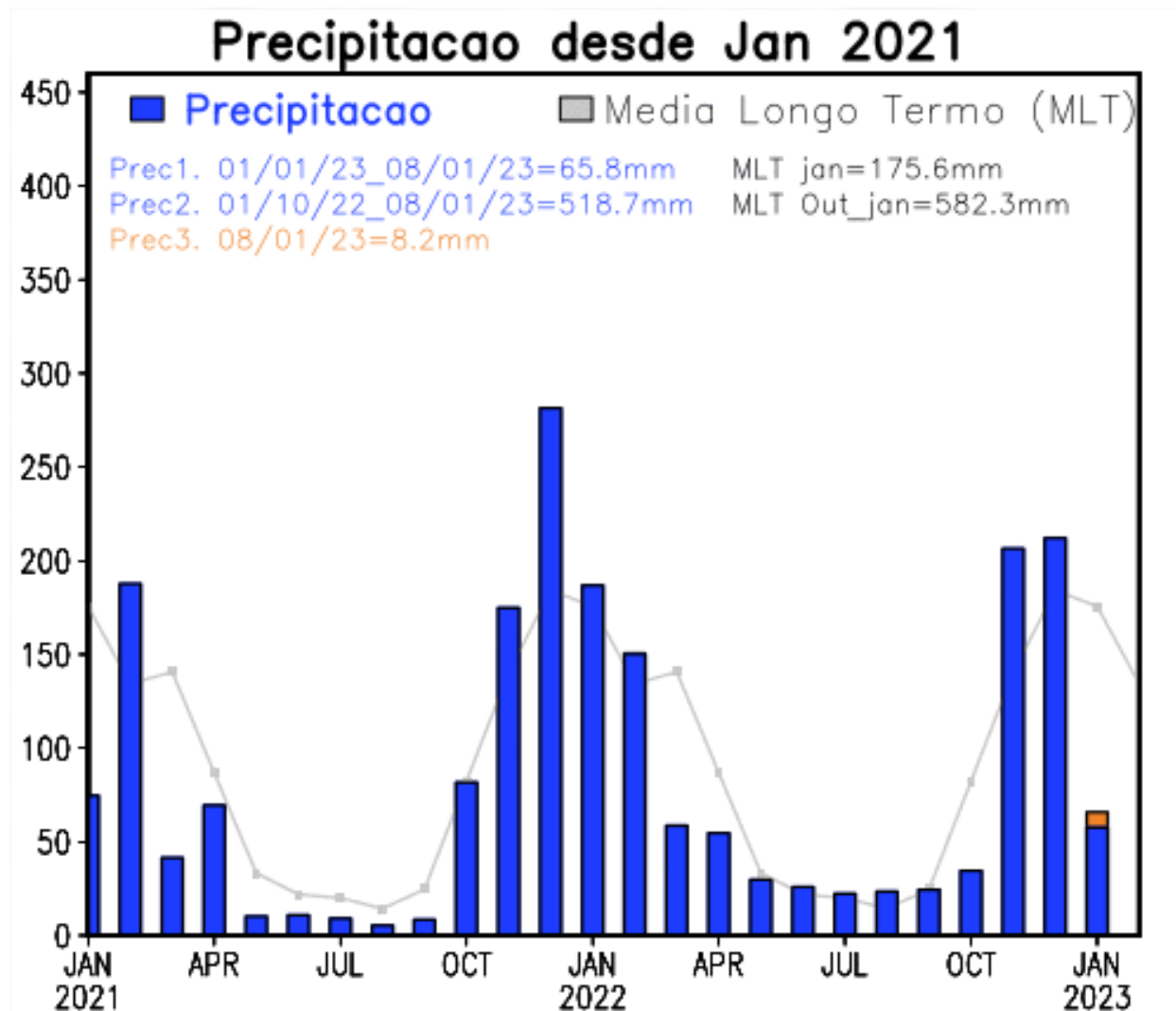
Precipitacao Acumulada (mm) A.S.
Período: 10/12/2022 a 09/01/2023



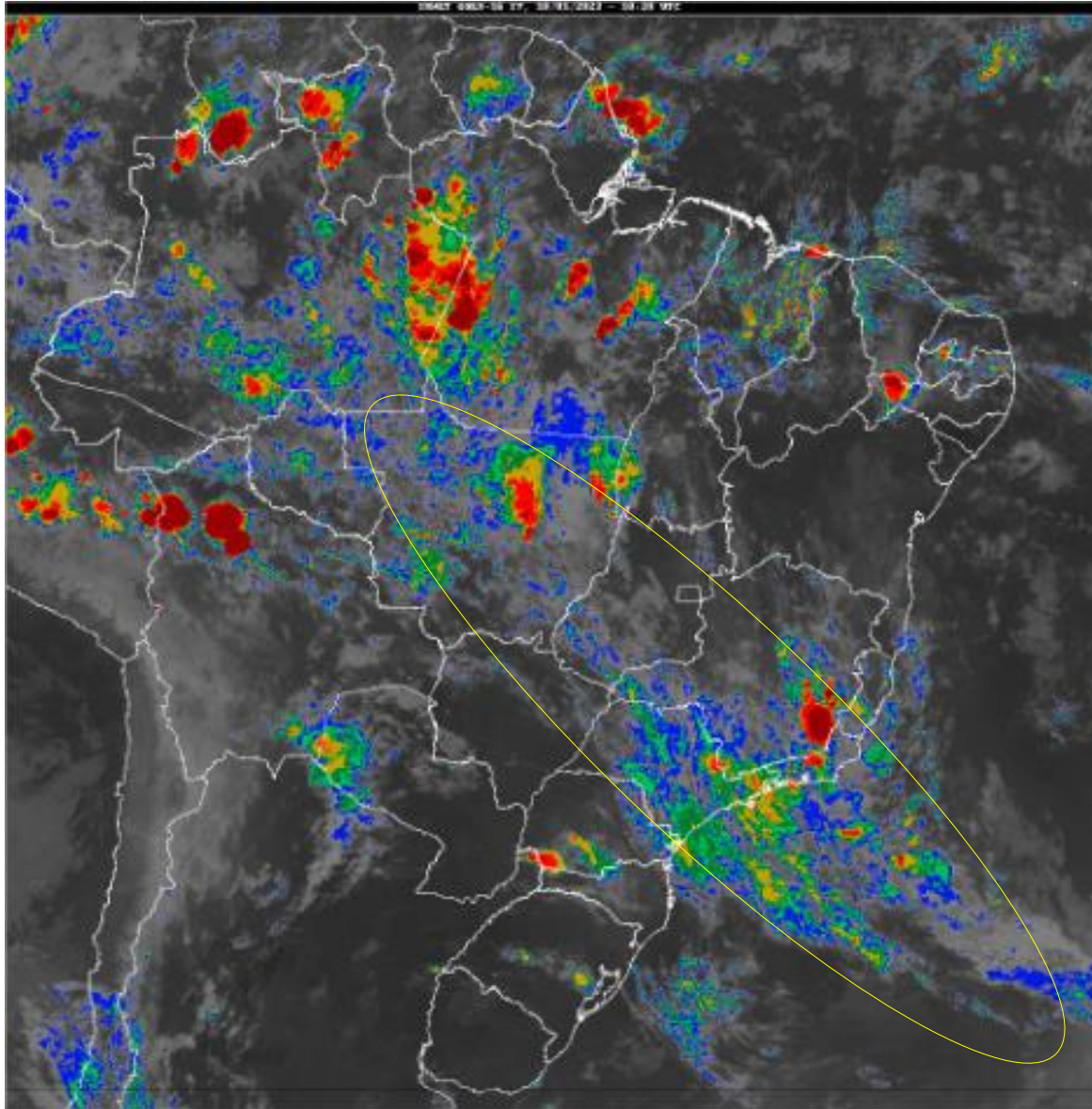
Anomalia de Precipitacao (mm) A.S.
Período: 10/12/2022 a 09/01/2023



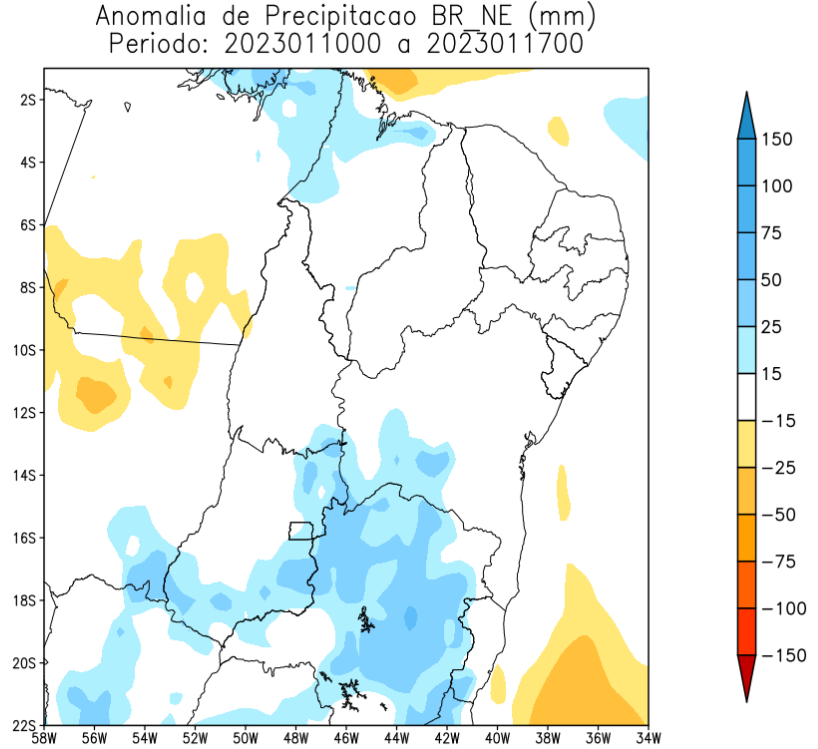
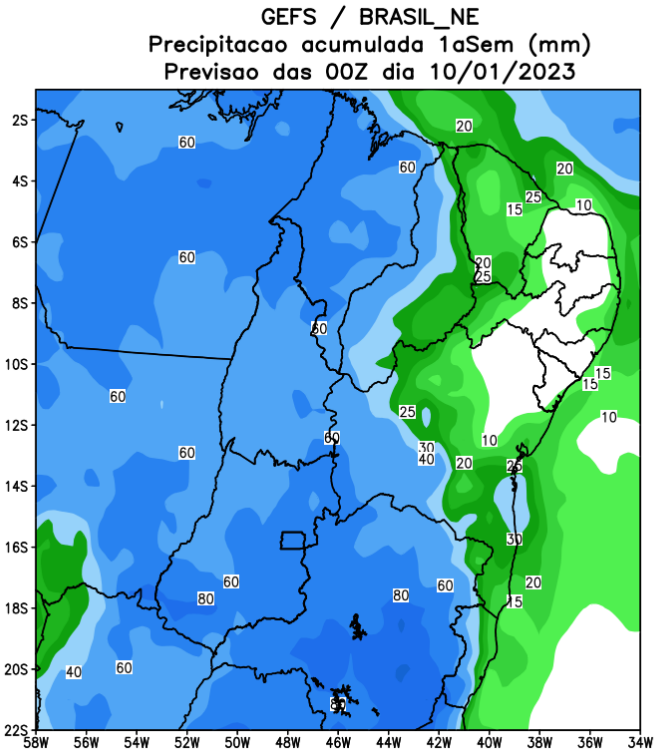
Bacia do rio São Francisco



Situação meteorológica atual



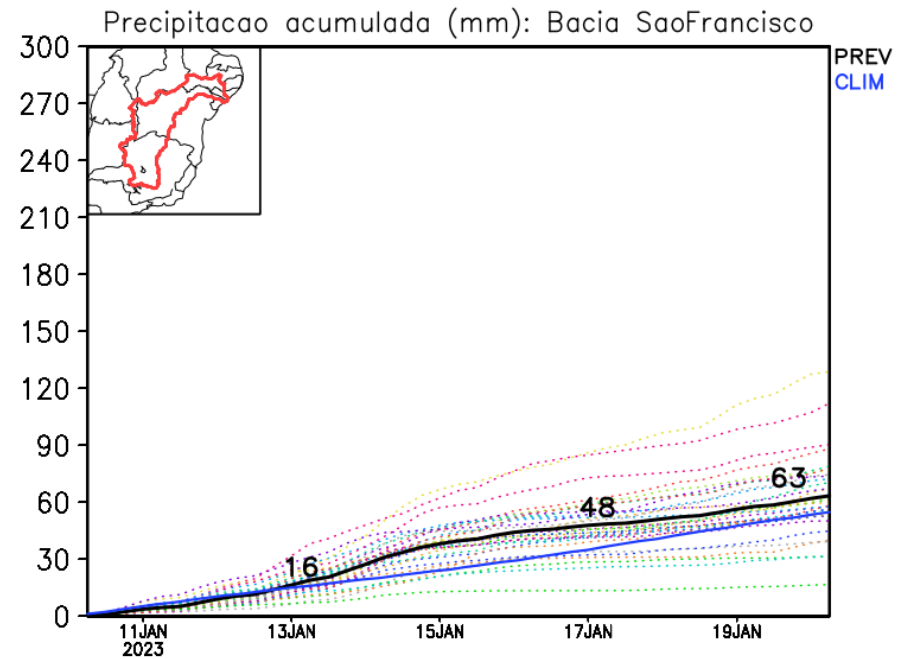
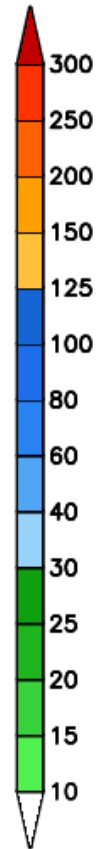
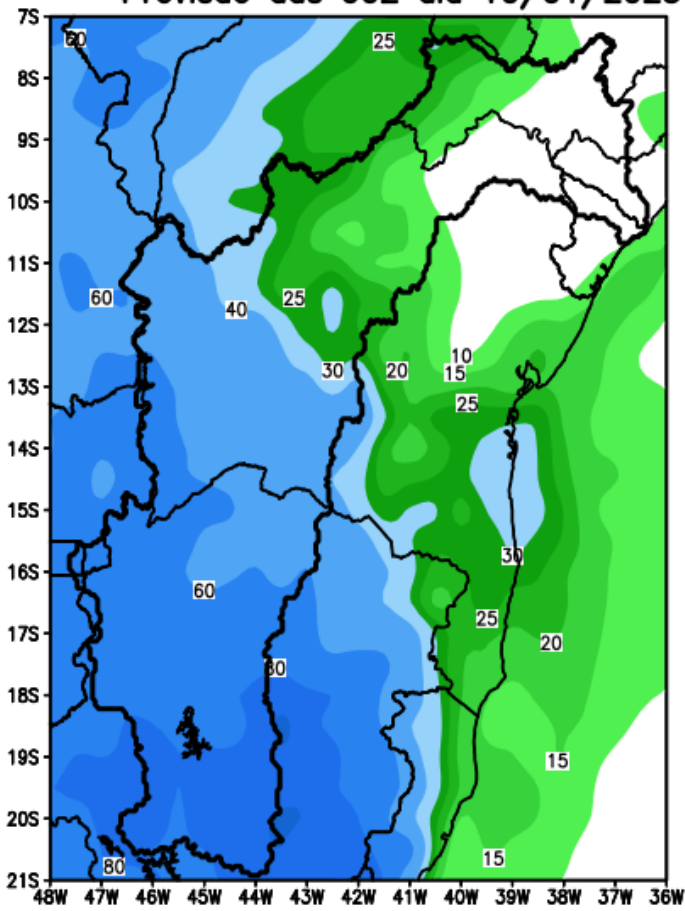
Previsão de chuva próximos 7 dias



Fonte: GEFS/NOAA

Bacia do rio São Francisco

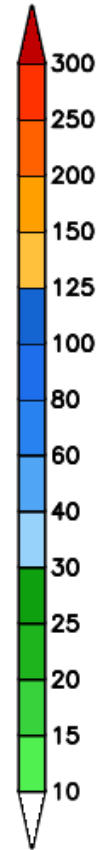
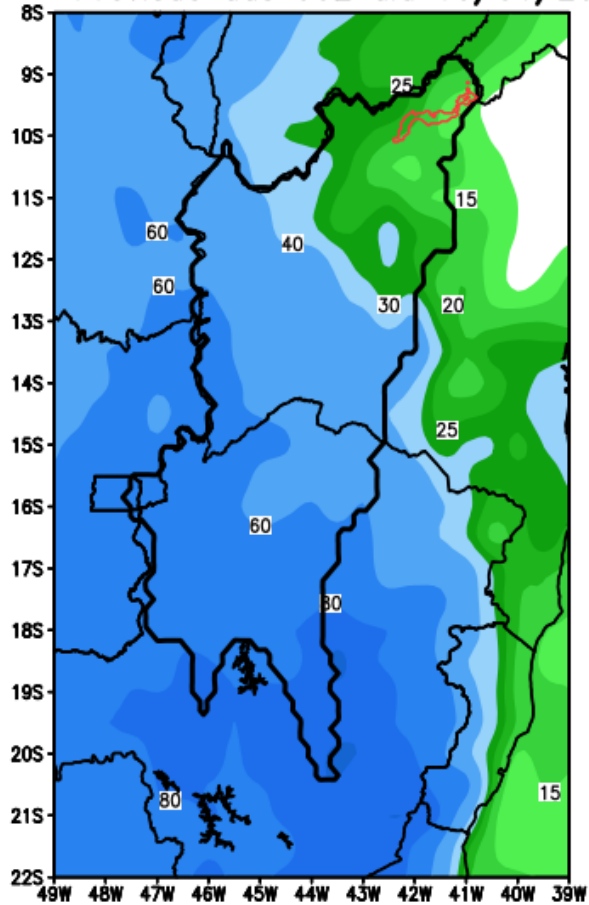
GEFS / Bacia do Rio Sao Francisco
Precipitacao acumulada em 7 dias (mm)
Previsao das 00Z dia 10/01/2023



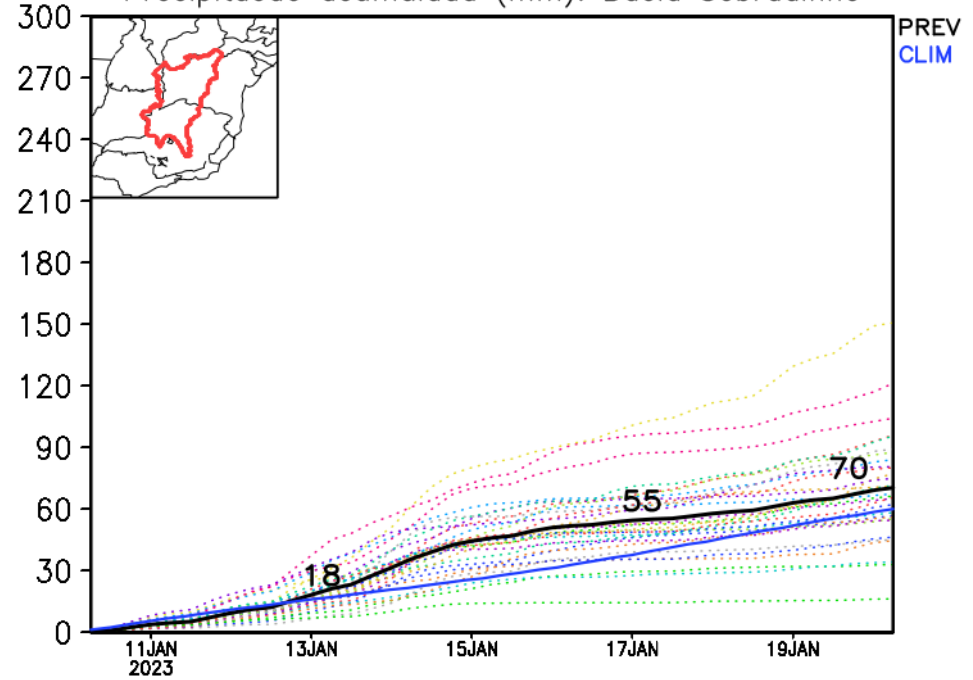
Bacia de Sobradinho

GEFS / Sobradinho

Precipitacao acumulada em 7 dias (mm)
Previsao das 00Z dia 10/01/2023

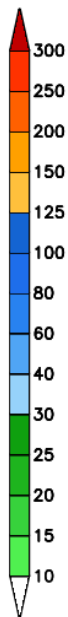
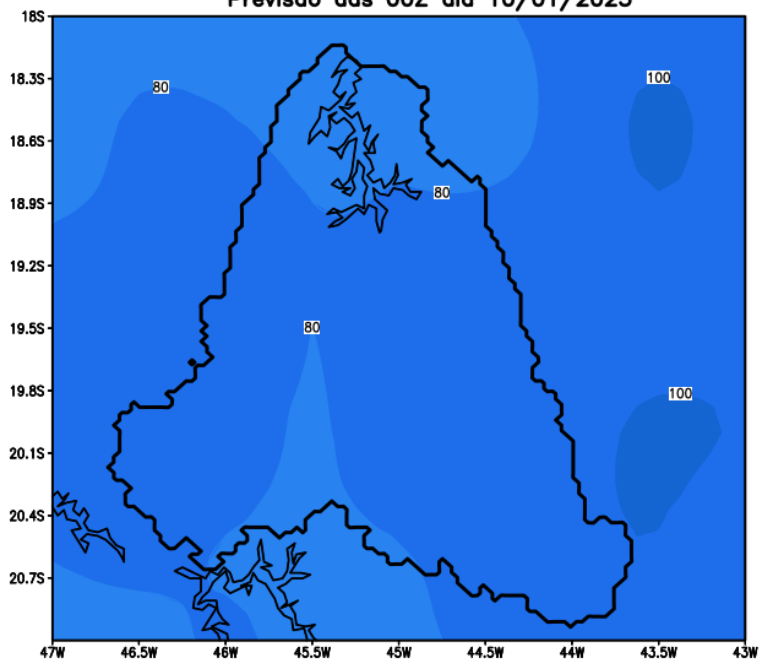


Precipitacao acumulada (mm): Bacia Sobradinho

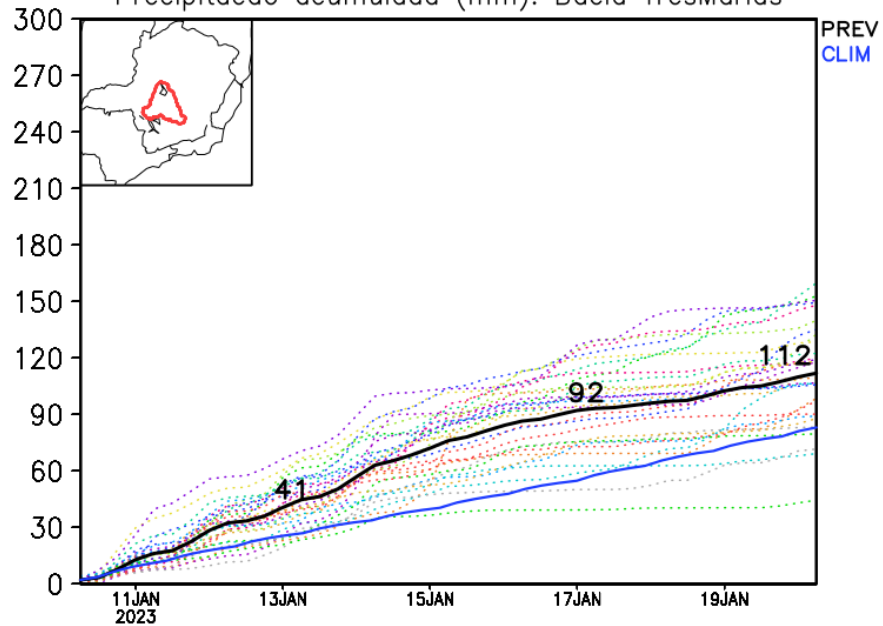


Bacia de Três Marias

GEFS / Tres Marias
Precipitacao acumulada em 7 dias (mm)
Previsao das 00Z dia 10/01/2023

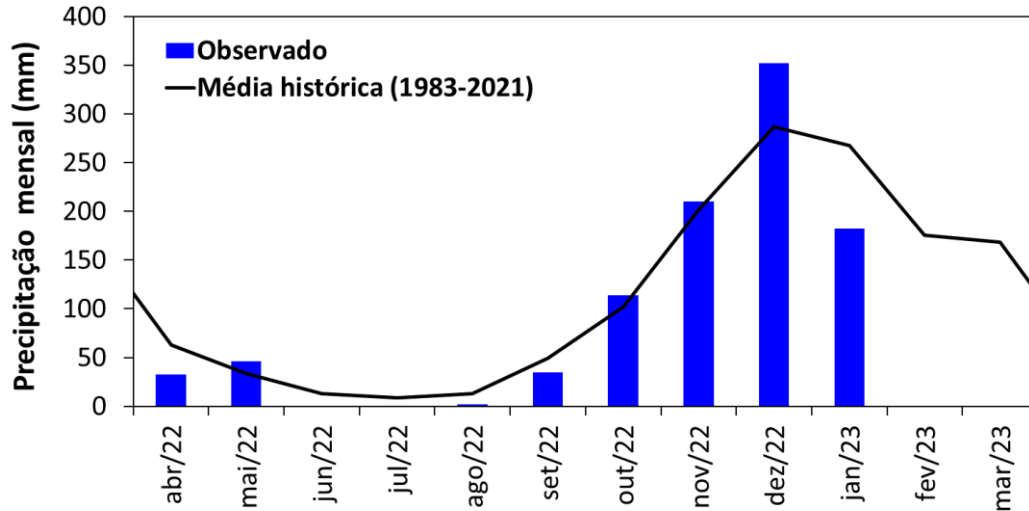


Precipitacao acumulada (mm): Bacia Tres Marias



Monitoramento UHE Três Marias

Precipitação



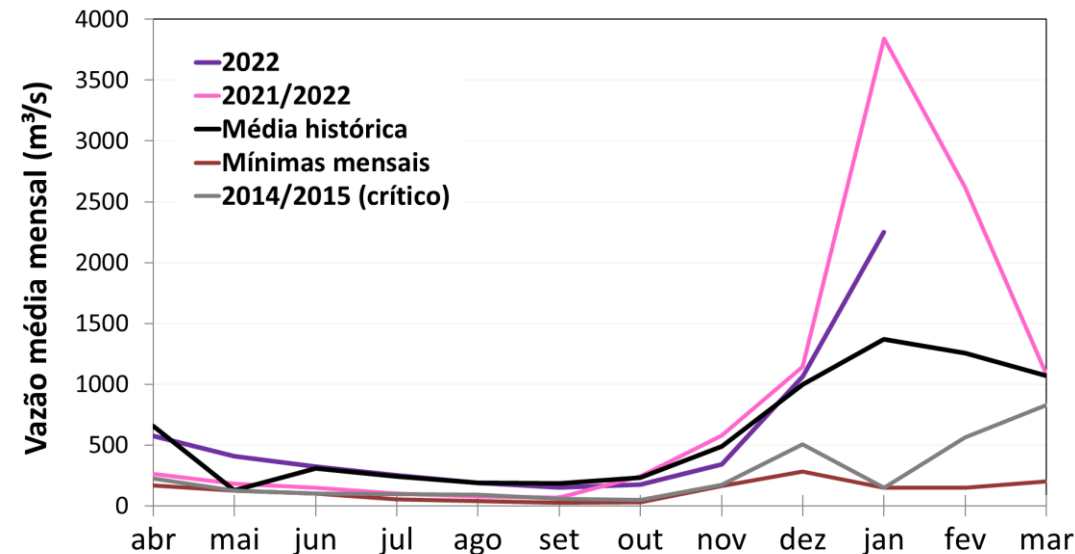
Estação Chuvosa - Out a Mar - 1201 mm
 2021/2022: 1592 mm (**132% da média histórica**)
 2022/2023*: 859 mm (**71% da média histórica**)

Estação Seca - Abr a Set – 181 mm
 2021: 34 mm (**19% da média histórica**)
 2022: 116 mm (**64% da média histórica**)

Dez/22: 352 mm (123% da média histórica)
Jan/23*: 183 mm (68% da média histórica; e 265% da média histórica histórica PARCIAL)

*Até 08/01/2023

Vazão



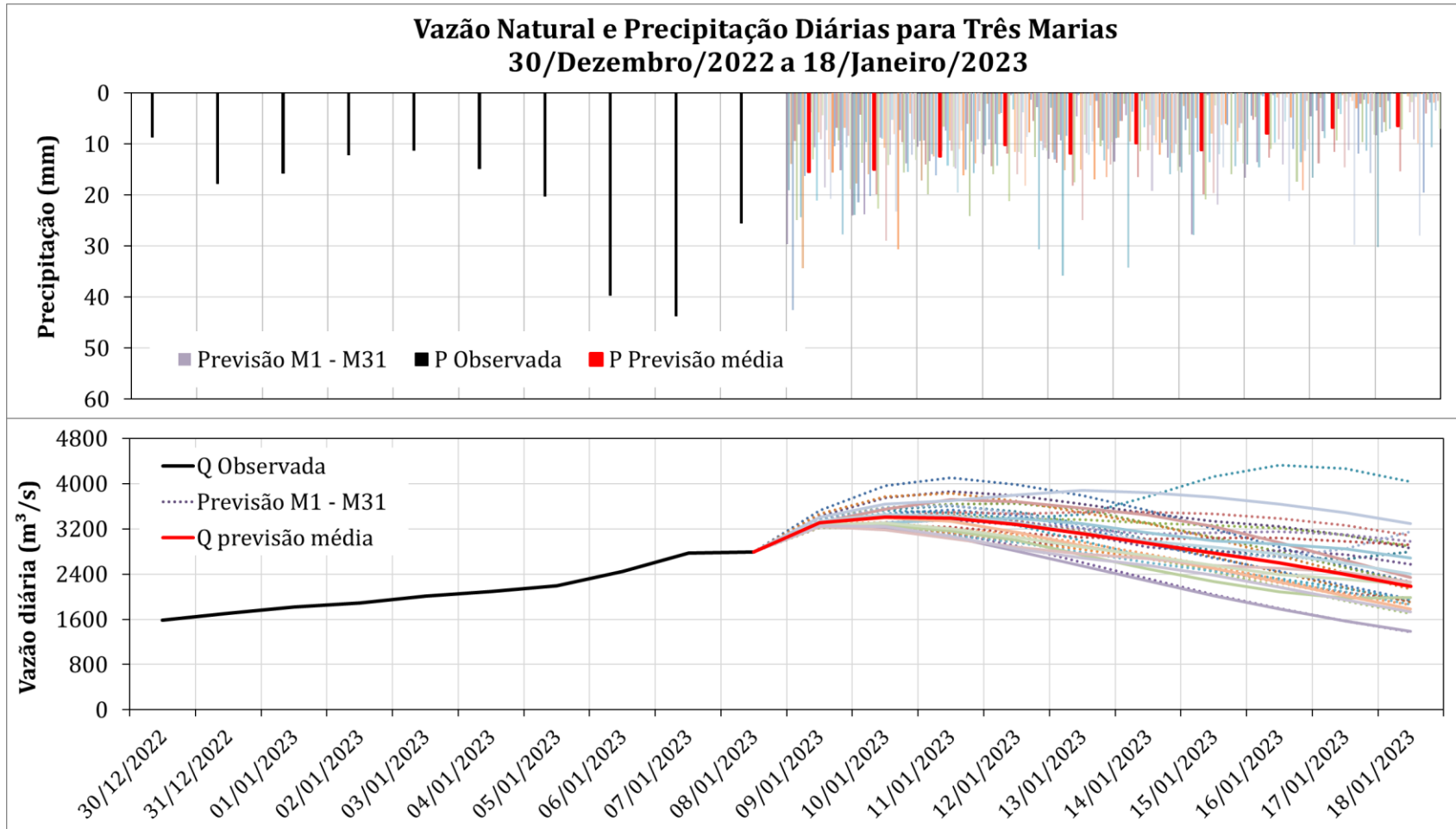
Estação Chuvosa - Nov a Abr - 974 m³/s
 2021/2022: 1639 m³/s (**168% da MLT**)
 2022/2023*: 702 m³/s (**72% da MLT**)

Estação Seca - Maio a Out – 214 m³/s
 2021: 136 m³/s (**64% da MLT**)
 2022*: 250 m³/s (**116% da MLT**)

Dez/22: 1065 m³/s (107% da MLT)
Jan/23*: 2252 m³/s (164% da MLT)

*Até 08/01/2023

UHE Três Marias: Previsão de Vazão (modelo PDM)



Dados **observados de precipitação** (barras pretas) para o período 30/12/a 08/01 e **previsão** para o período de 09 a 18/01
Dados **observados de vazão** (linha preta) para o período 30/12a 08/01 e **previsão** para o período de 09 a 18/01

As barras coloridas correspondem às previsões da chuva para os 31 membros GEFS/NOAA e à média destes membros.

As linhas coloridas representam os membros de previsão de vazão.

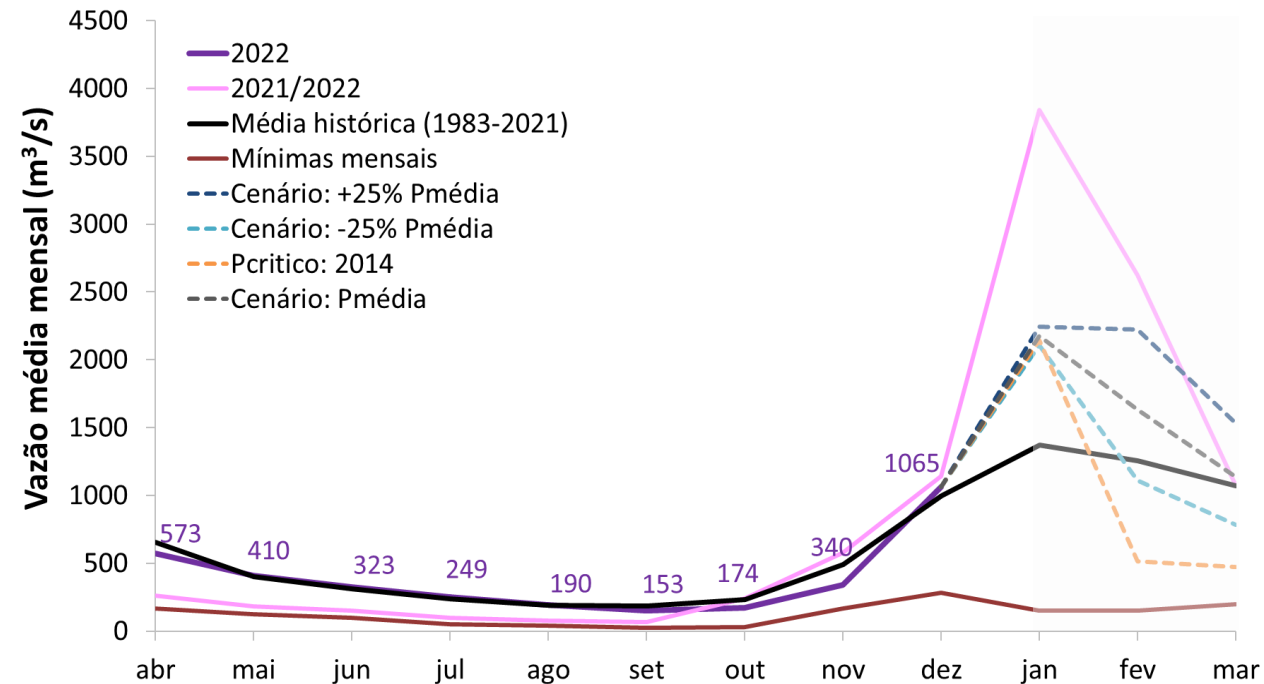
Previsão média para os próximos 10 dias: 2941 m³/s
(Valor significativamente superior a MLT de JANEIRO (1372 m³/s))

UHE Três Marias: Projeções de Vazão (modelo PDM)

Histórico e simulação da vazão natural média mensal

UHE Três Marias - Rio São Francisco

Previsão: 09 a 18/Jan- Projeções: 19/Jan/23 a 31/Mar/23



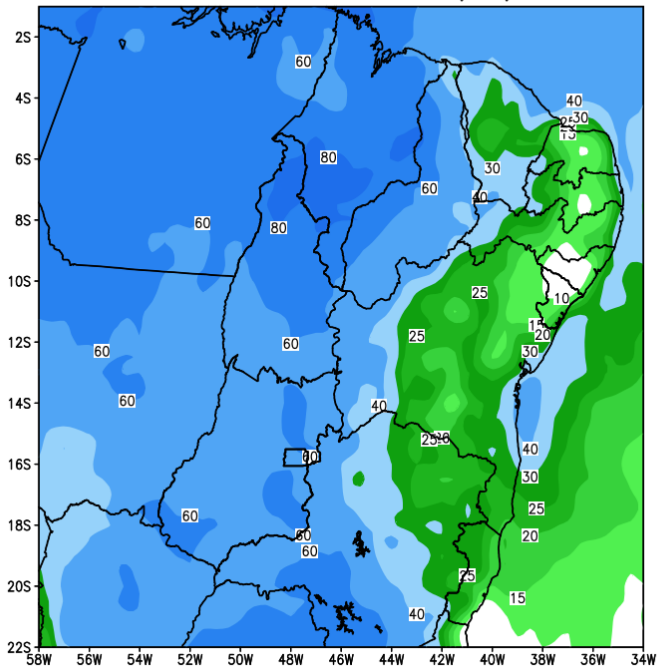
JANEIRO - MARÇO
MLT: 1233 m³/s

Vazão	% MLT
2001 m³/s	162%
1647 m³/s	134%
1334 m³/s	108%
1044 m³/s	85%

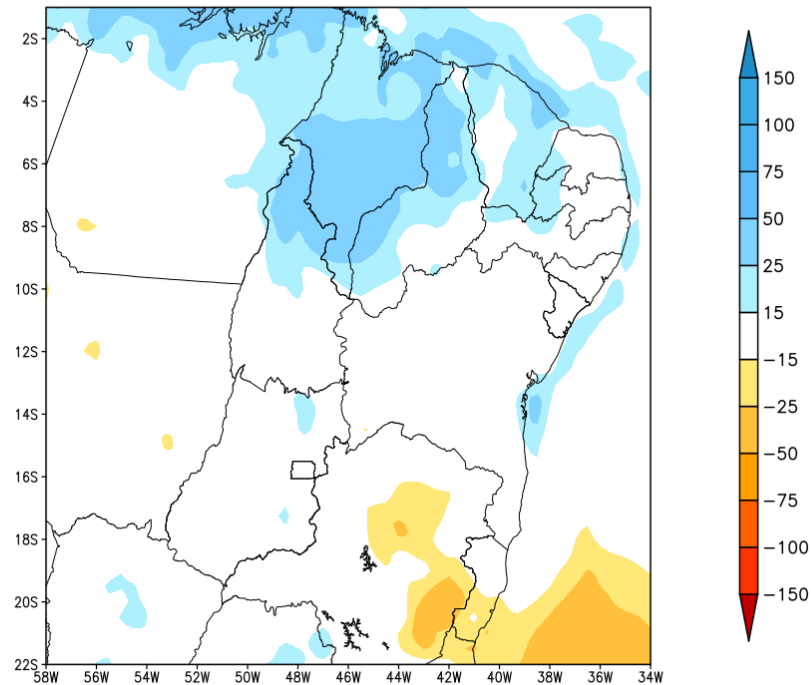
P crítica: Em 2014 (jan-mar) choveu 217 mm (35% da média histórica)

Tendência para a 2a semana

GEFS / BRASIL_NE
Precipitacao acumulada 2aSem (mm)
Previsao das 00Z dia 10/01/2023



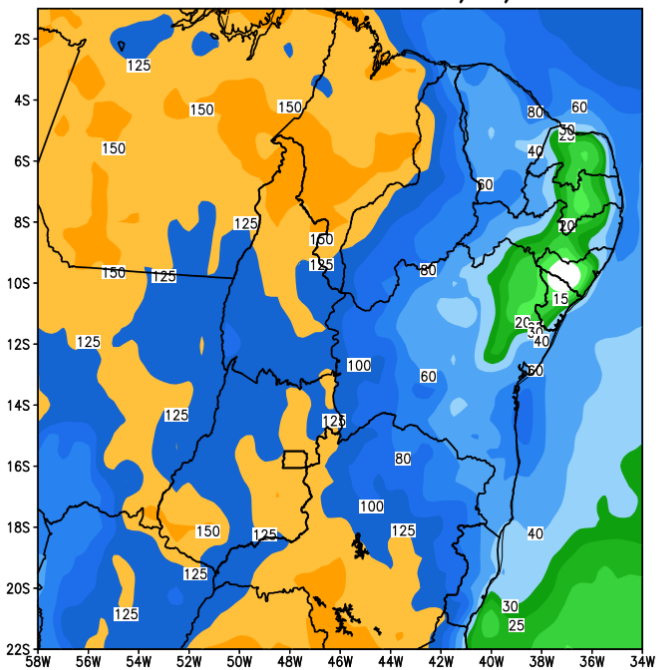
Anomalia de Precipitacao BR_NE (mm)
Periodo: 2023011800 a 2023012400



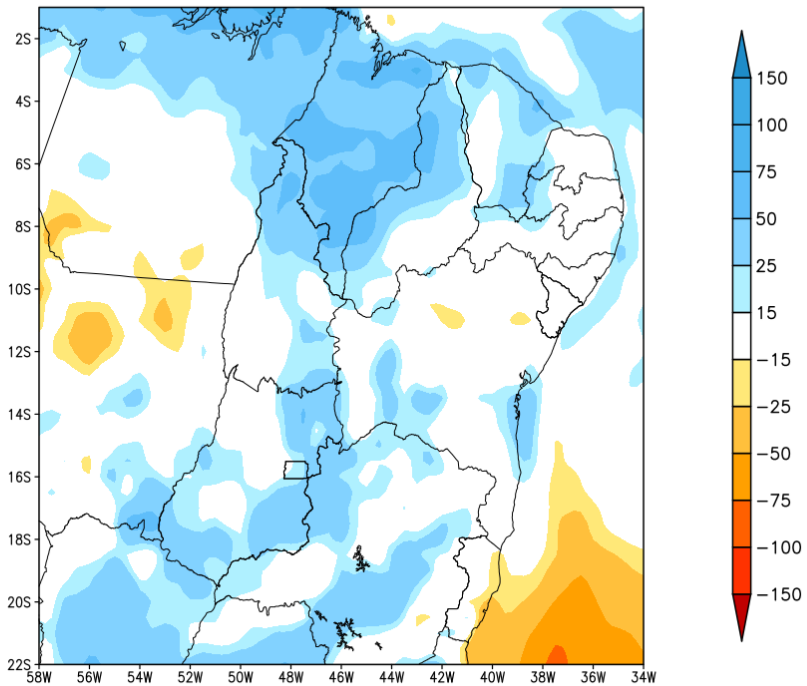
Modelo GFS/NOAA

Tendência para as duas próximas semanas

GEFS / BRASIL_NE
Precipitacao acumulada 14dias (mm)
Previsao das 00Z dia 10/01/2023



Anomalia de Precipitacao BR NE (mm)
Periodo: 2023011000 a 2023012400



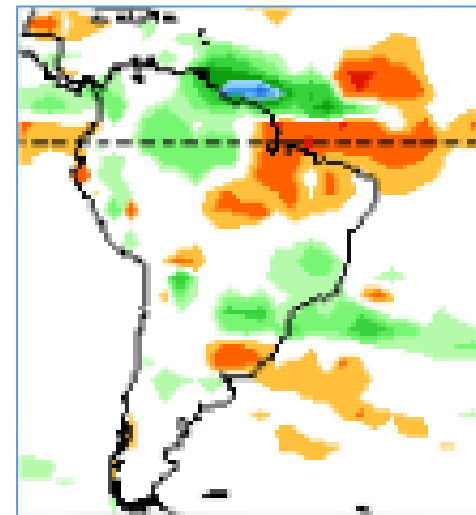
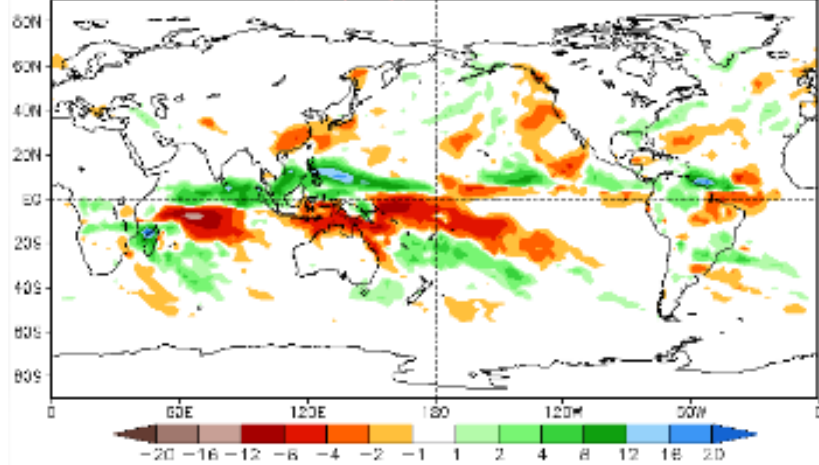
Modelo GFS/NOAA

Tendência 3a e 4a semanas

16 Member Ensemble Mean Forecast from 08Jan2023

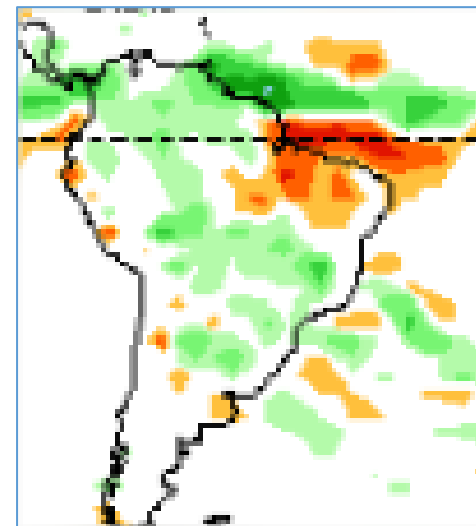
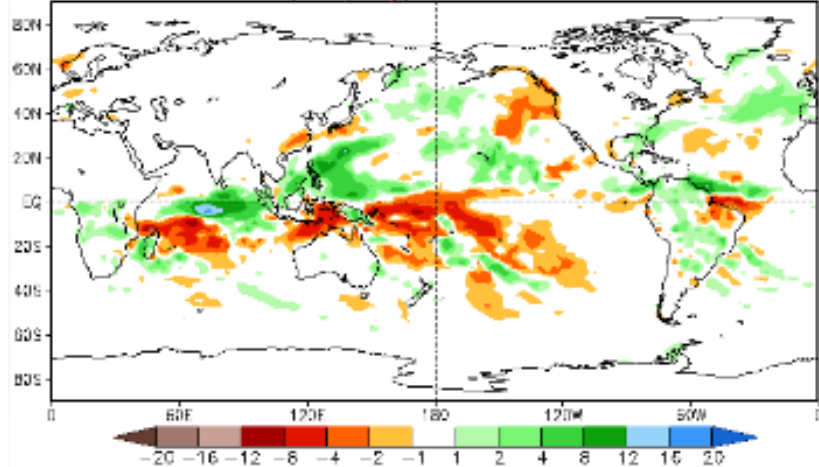
Week 3 Anomalies (mm/day)

23Jan2023 - 29Jan2023



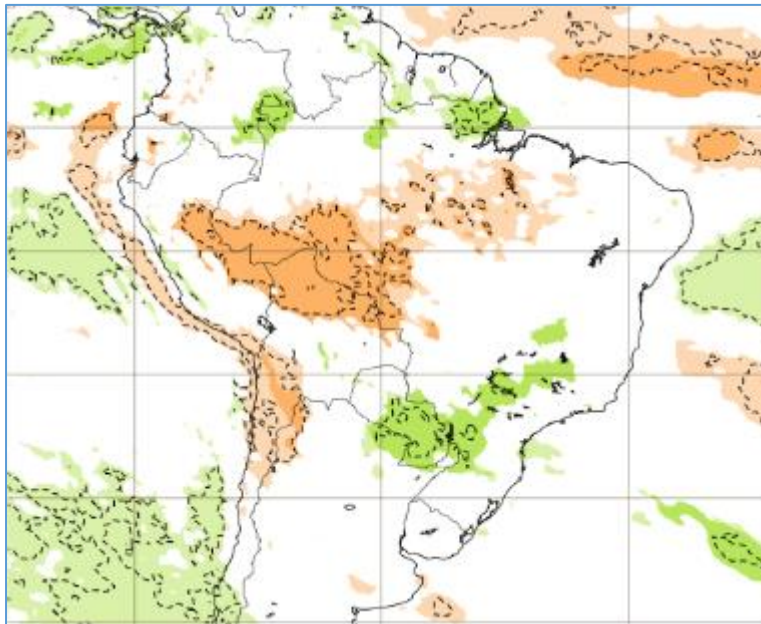
Week 4 Anomalies (mm/day)

30Jan2023 - 5Feb2023

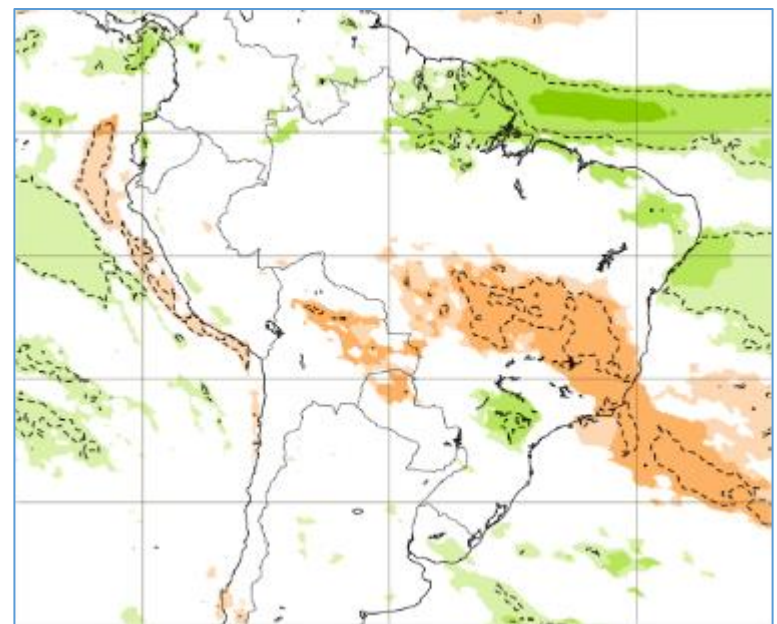


Tendência para 3ª e 4ª semanas

23-30/01

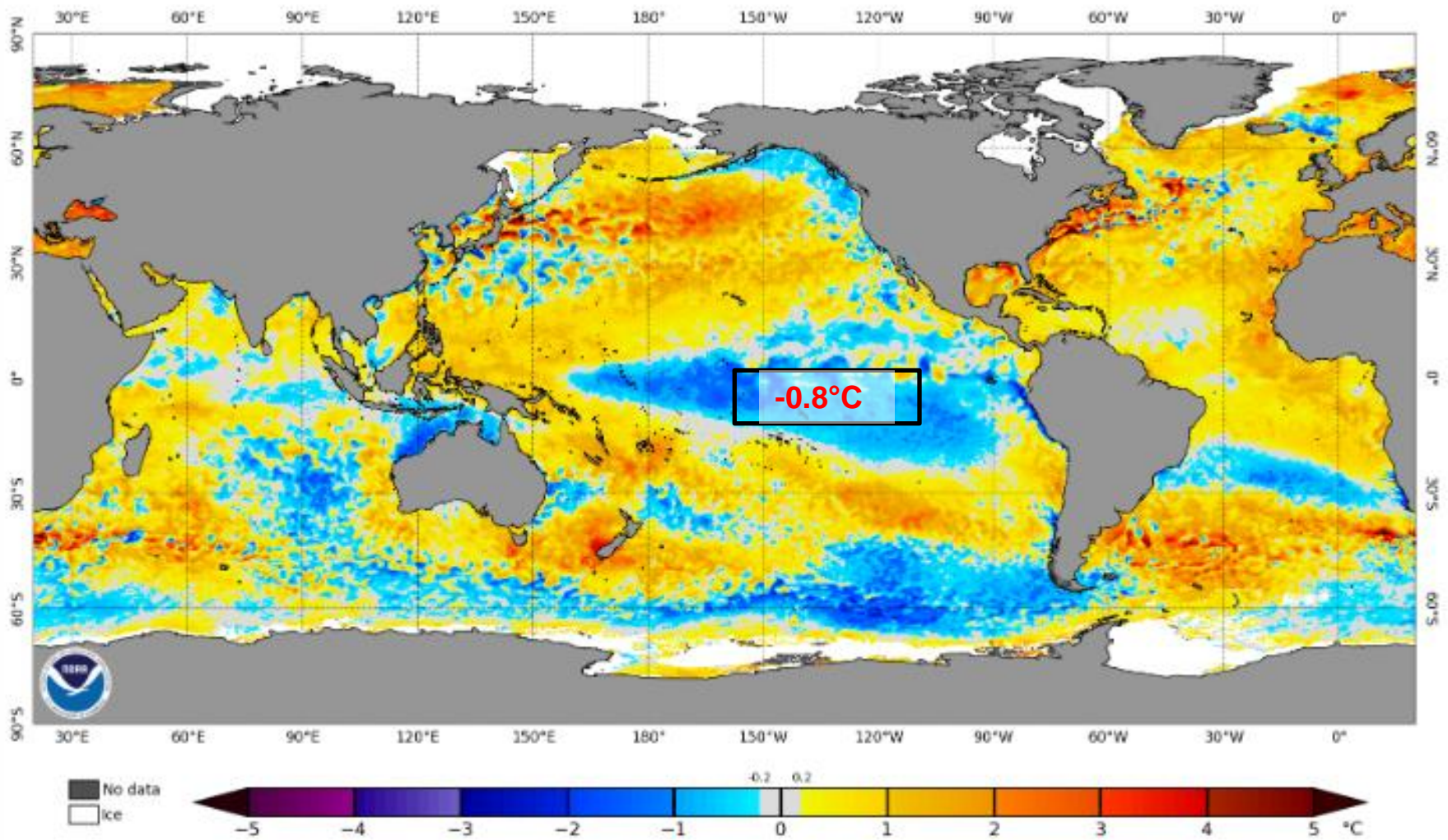


30/01-06/02



Status Atual: La Niña

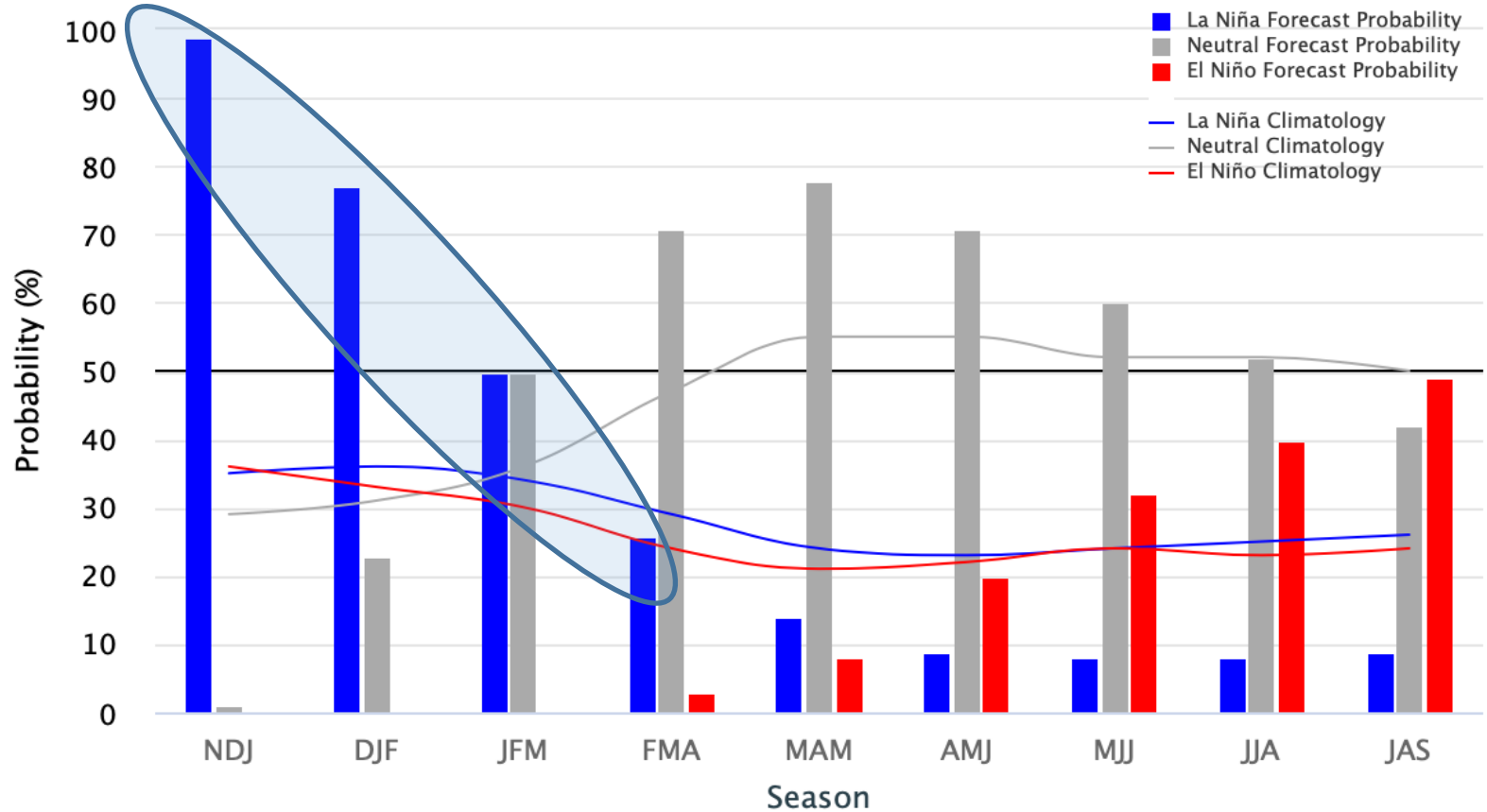
NOAA Coral Reef Watch Daily 5km SST Anomalies (v3.1) 7 Jan 2023



Previsão do “La Niña”

Early-December 2022 CPC Official Probabilistic ENSO Forecasts

ENSO state based on NINO3.4 SST Anomaly
Neutral ENSO: $-0.5\text{ }^{\circ}\text{C}$ to $0.5\text{ }^{\circ}\text{C}$



Status Atual: **La Niña**

FONTE: NOAA

Previsão sazonal de Chuva JFM

