

Monitoramento, Previsões e Projeções para a Bacia do Rio São Francisco

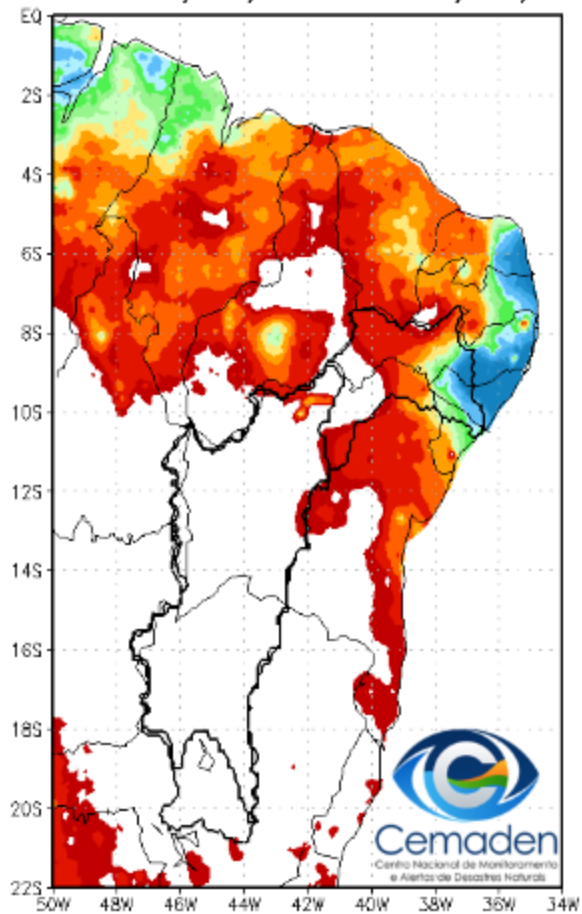


Cemaden
Centro Nacional de Monitoramento
e Alertas de Desastres Naturais

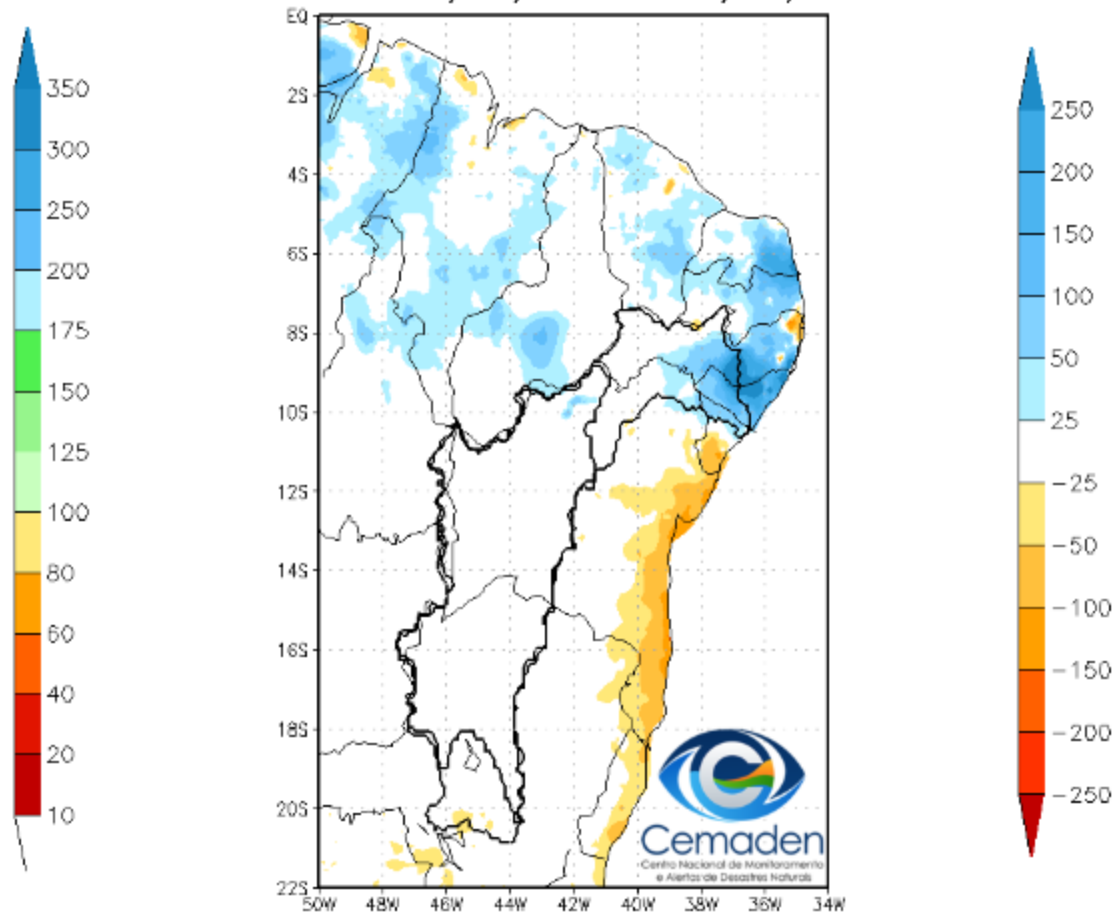
05 de Julho de 2022

Chuva dos últimos 30 dias

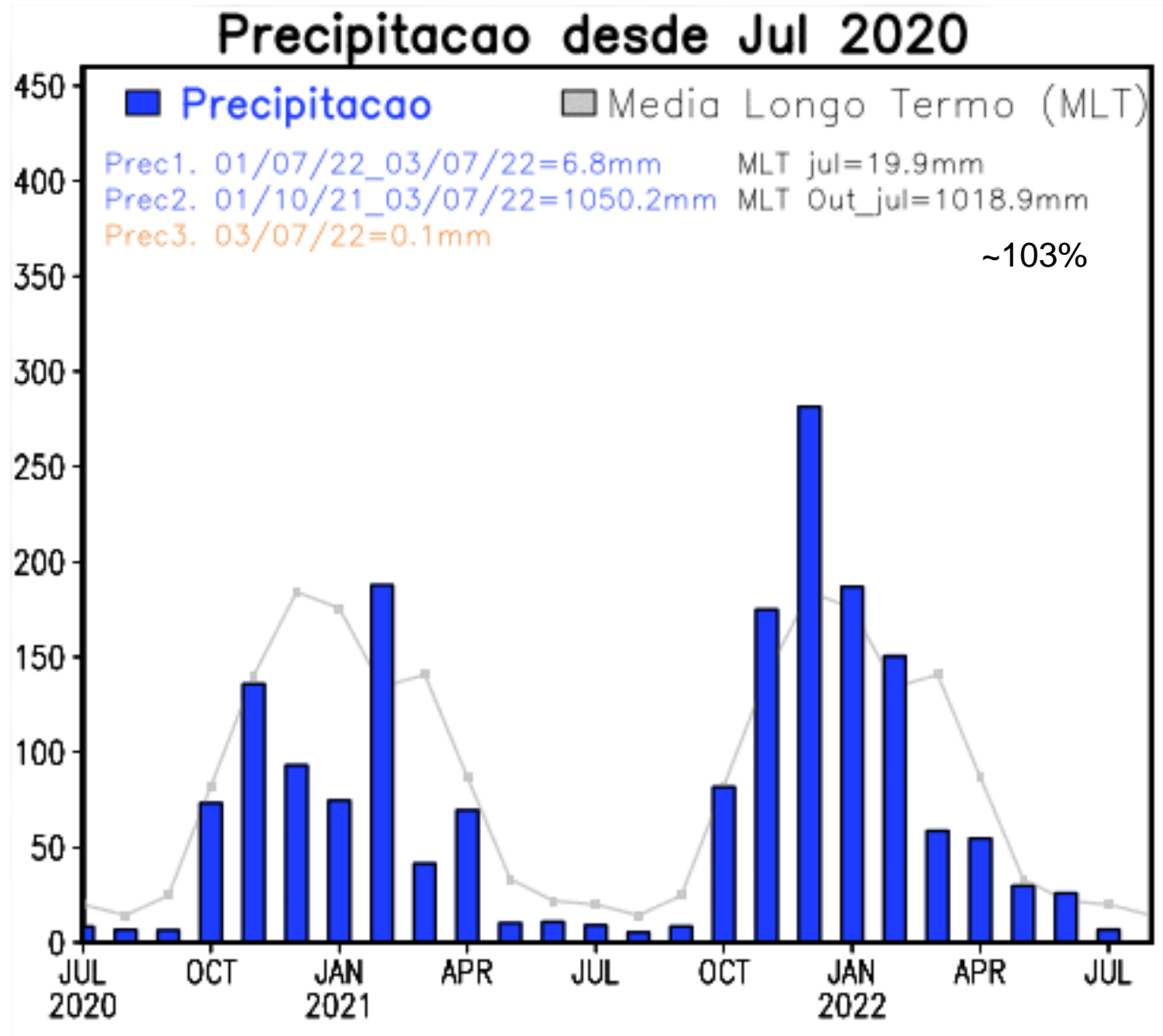
Precipitacao Acumulada (mm) A.S.
Período: 04/06/2022 a 04/07/2022



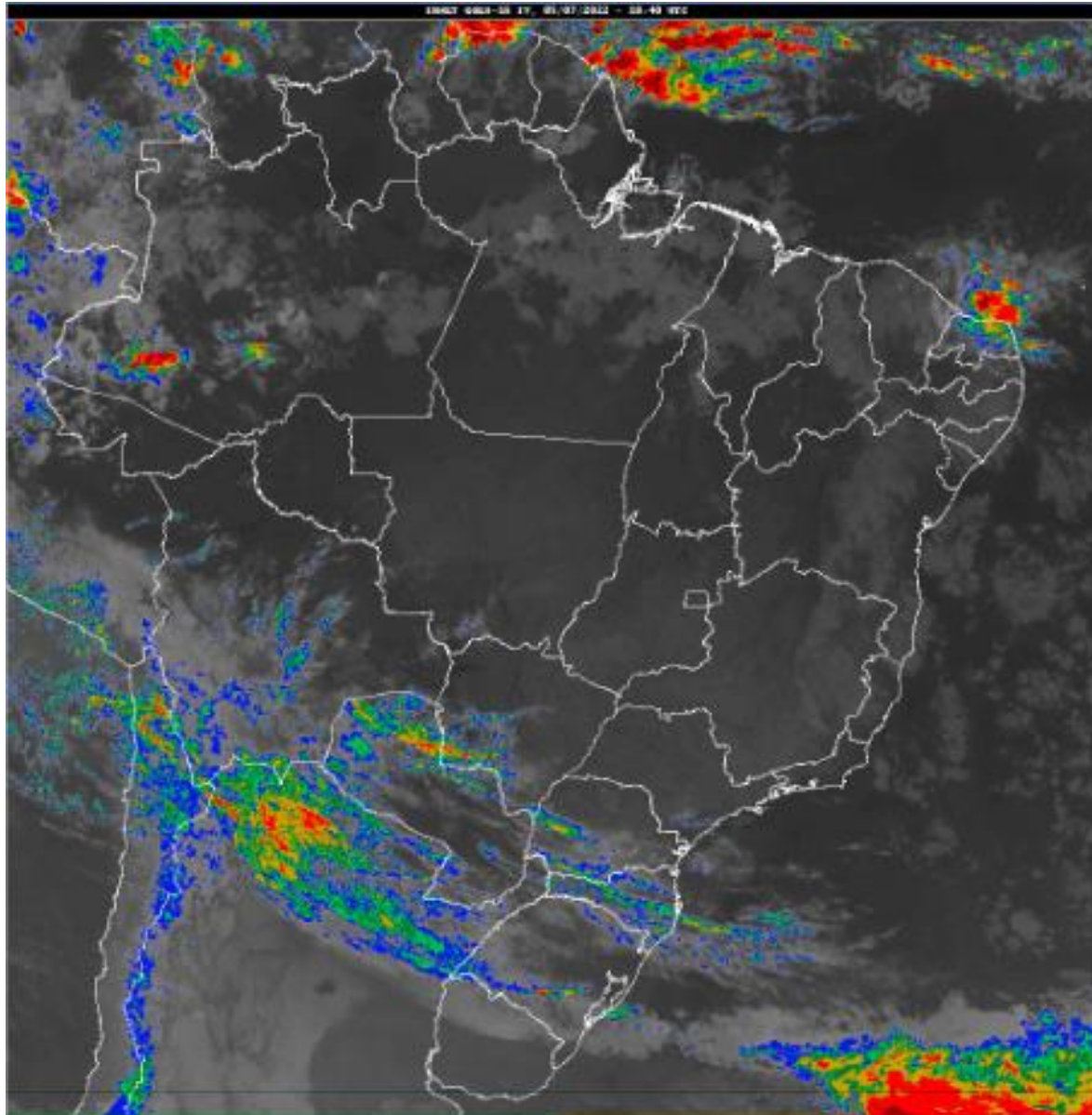
Anomalia de Precipitacao (mm) A.S.
Período: 04/06/2022 a 04/07/2022



Bacia do rio São Francisco

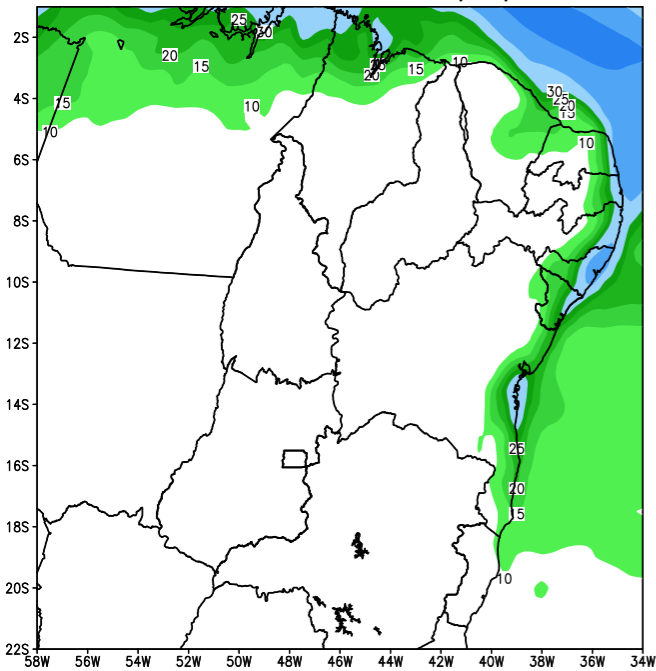


Situação meteorológica atual

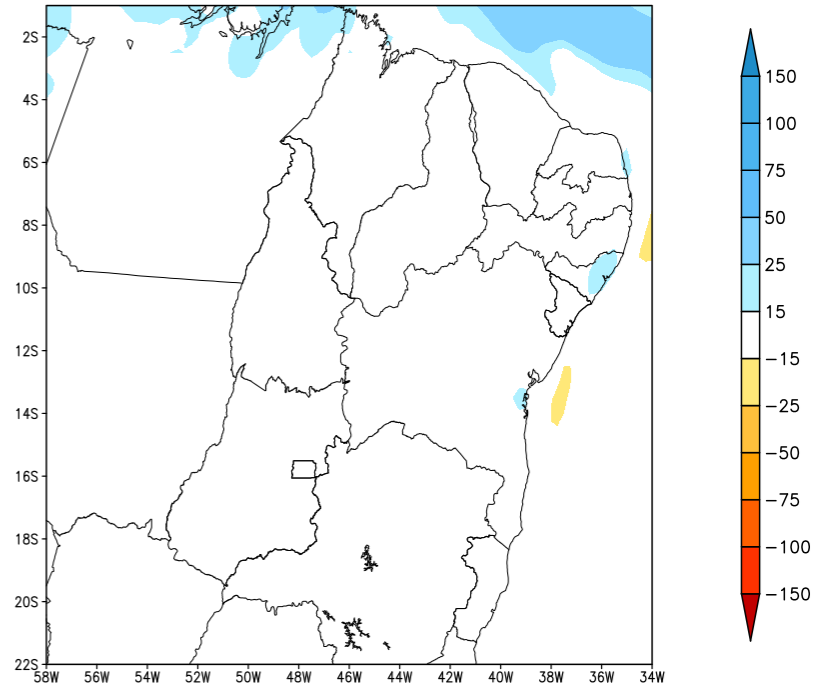


Previsão de chuva próximos 7 dias

GEFS / BRASIL_NE
Precipitacao acumulada 1aSem (mm)
Previsao das 00Z dia 05/07/2022



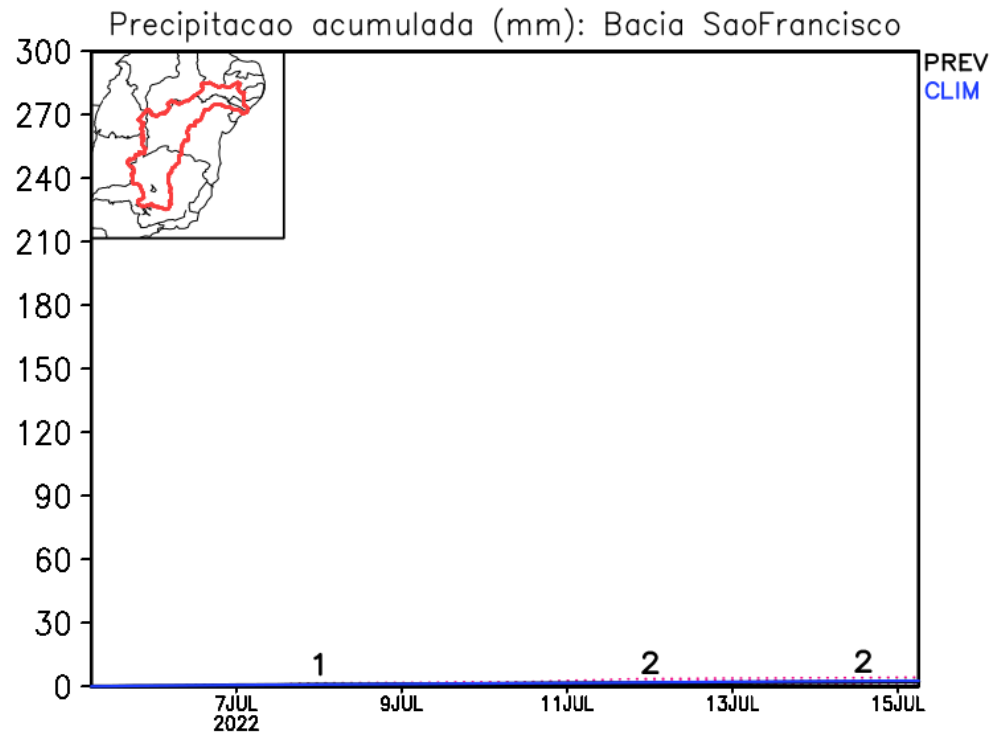
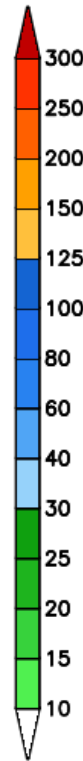
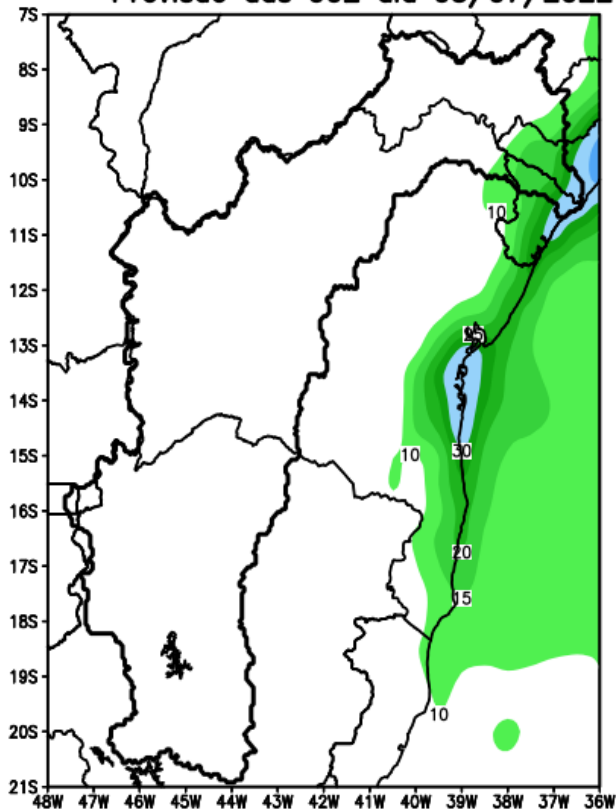
Anomalia de Precipitacao BR_NE (mm)
Periodo: 2022070500 a 2022071200



Fonte: GEFS/NOAA

Bacia do rio São Francisco

GEFS / Bacia do Rio Sao Francisco
Precipitacao acumulada em 7 dias (mm)
Previsao das 00Z dia 05/07/2022

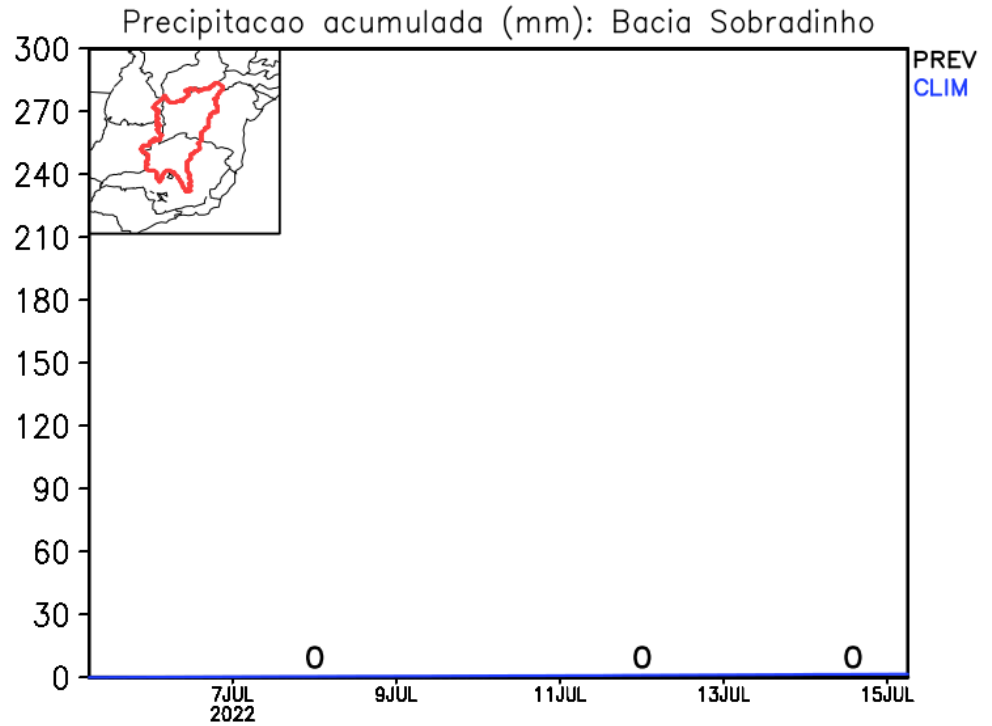
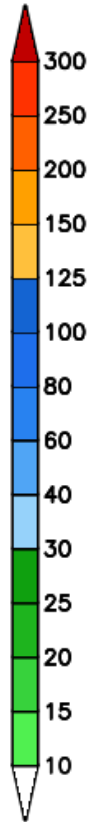
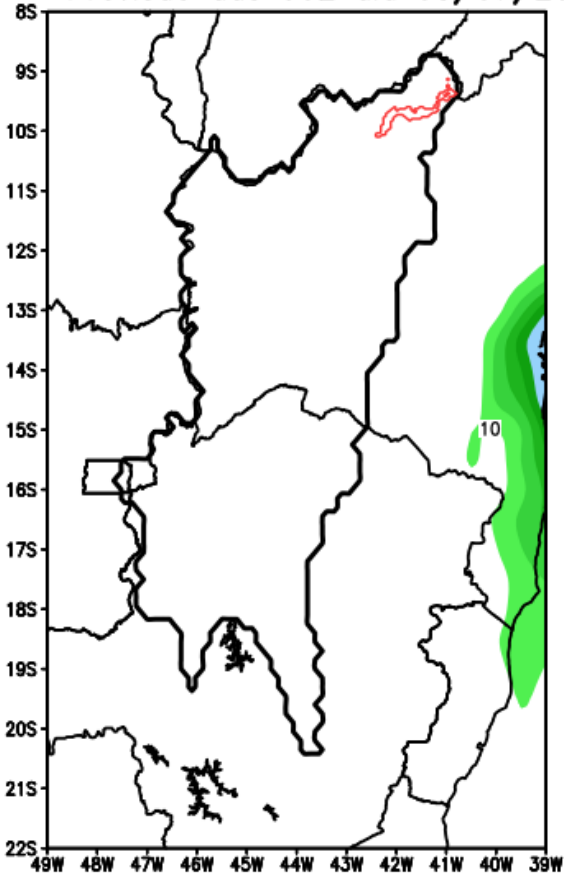


Bacia de Sobradinho

GEFS / Sobradinho

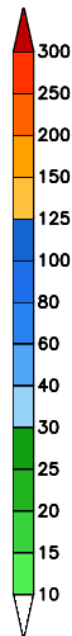
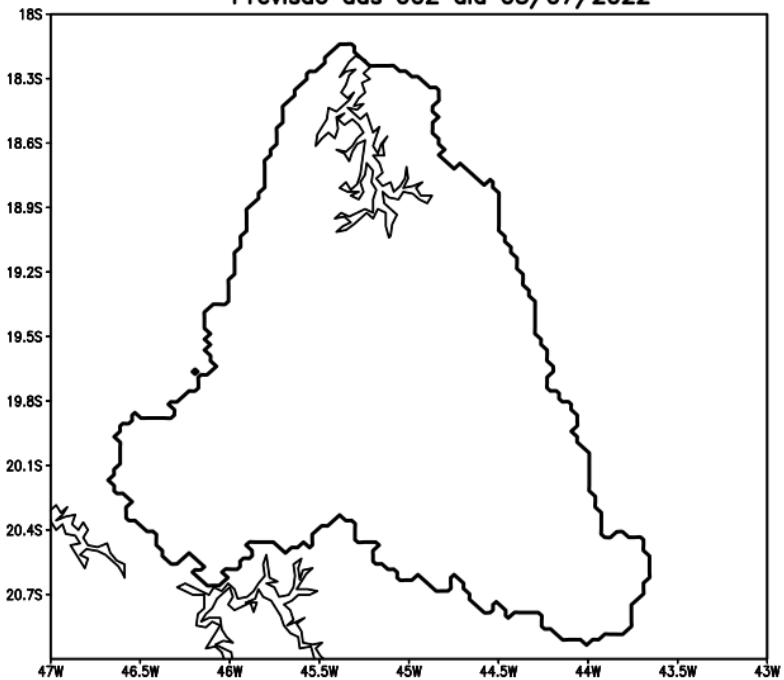
Precipitacao acumulada em 7 dias (mm)

Previsao das 00Z dia 05/07/2022

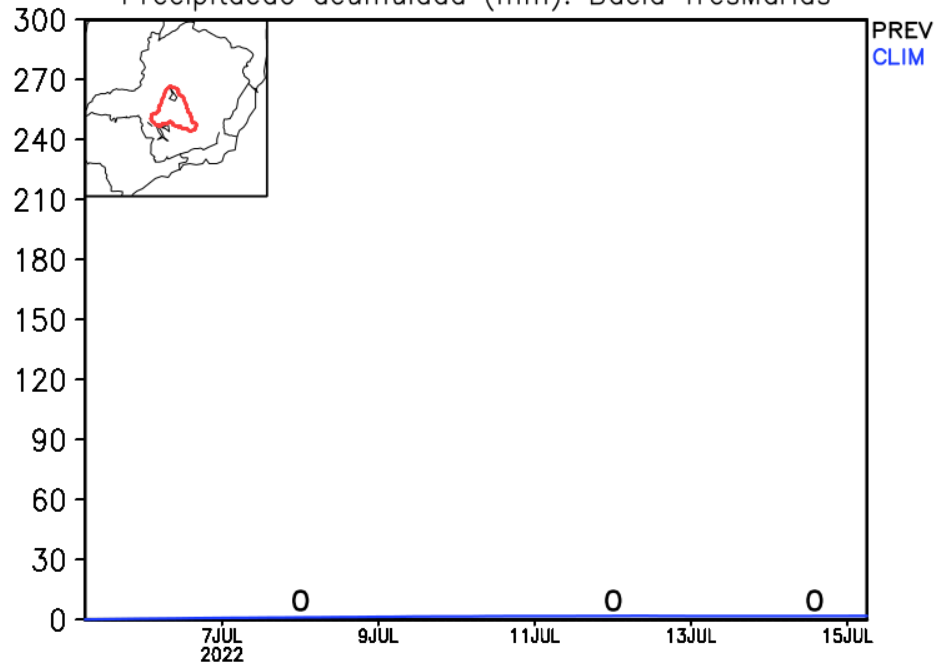


Bacia de Três Marias

GEFS / Tres Marias
Precipitacao acumulada em 7 dias (mm)
Previsao das 00Z dia 05/07/2022

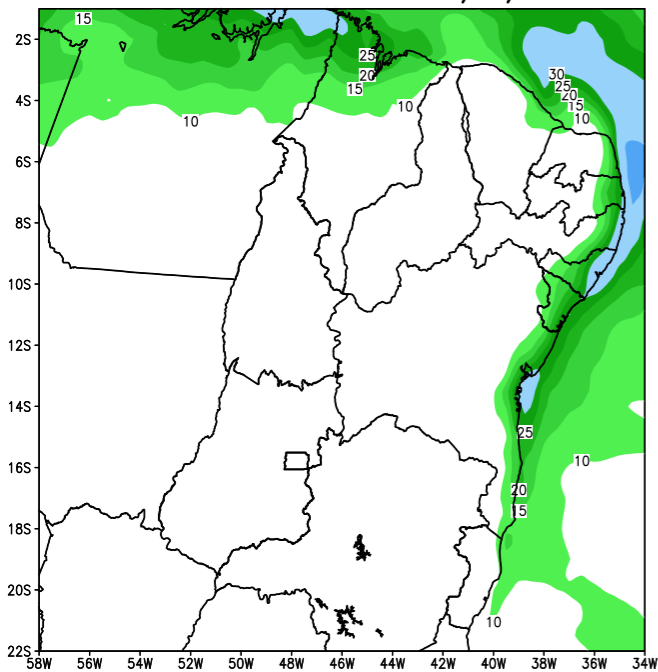


Precipitacao acumulada (mm): Bacia Tres Marias

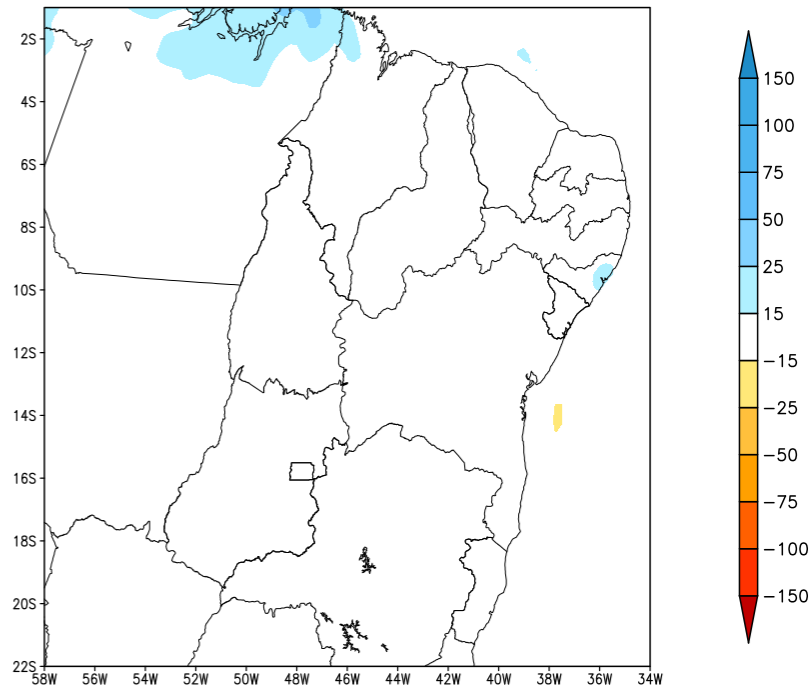


Tendência para a 2a semana

GEFS / BRASIL_NE
Precipitacao acumulada 2aSem (mm)
Previsao das 00Z dia 05/07/2022



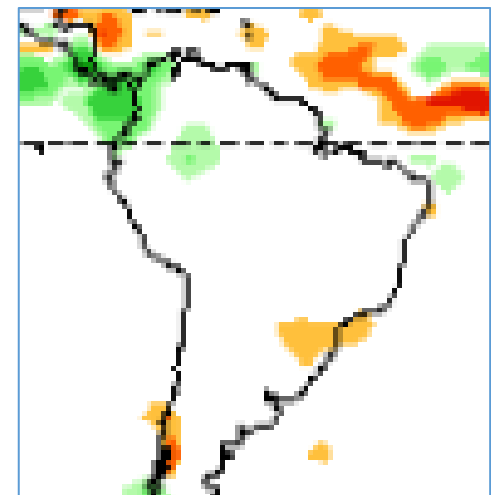
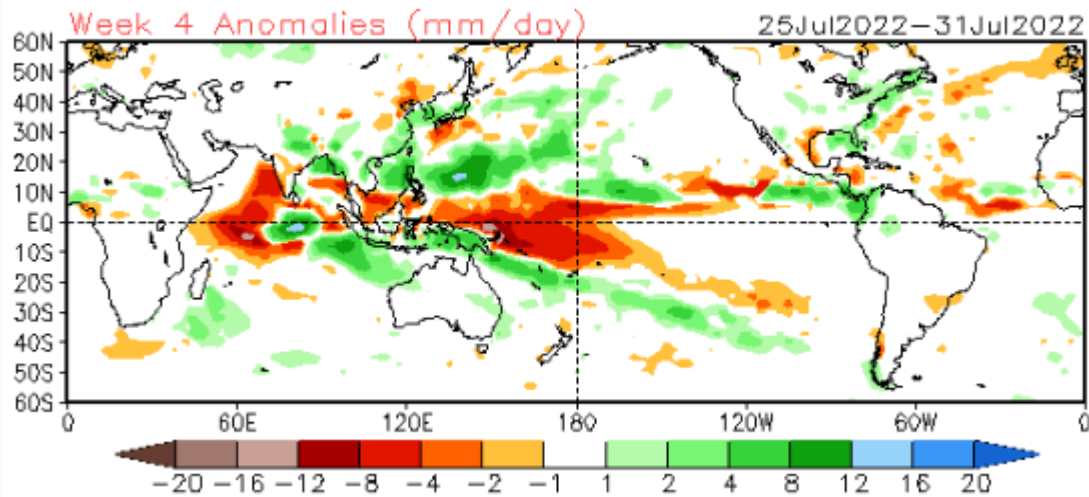
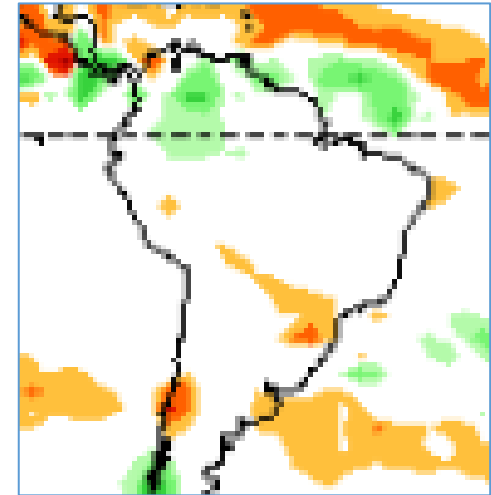
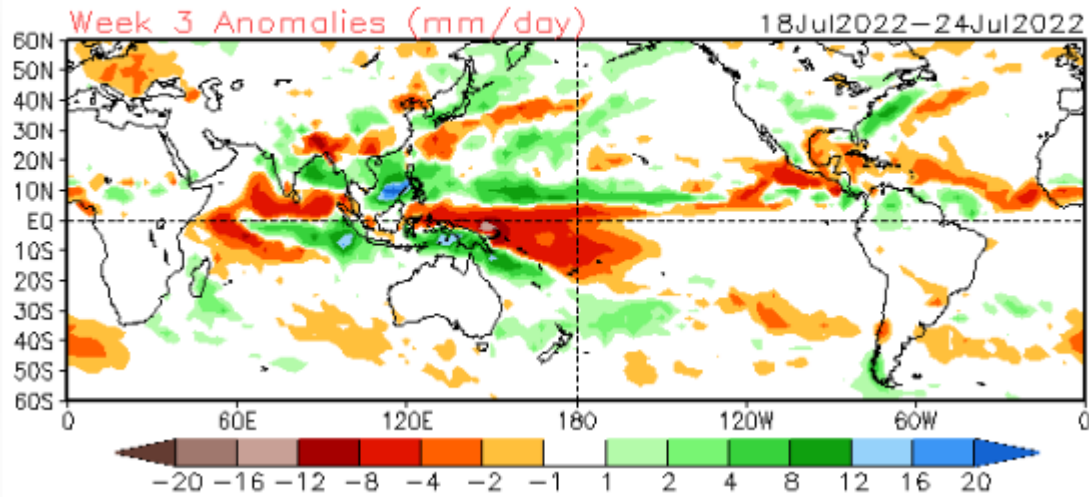
Anomalia de Precipitacao BR NE (mm)
Periodo: 2022071300 a 2022071900



Modelo GFS/NOAA

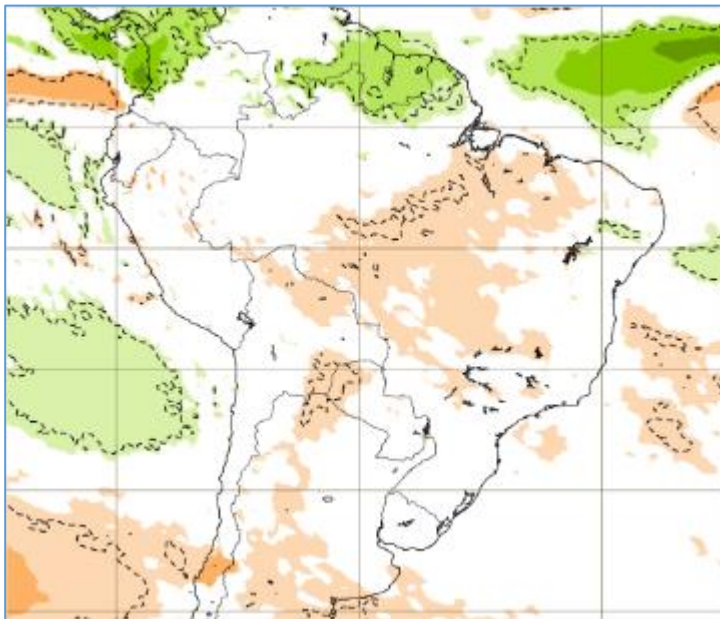
Tendência 3a e 4a semanas

16 Member Ensemble Mean Forecast from 03Jul2022

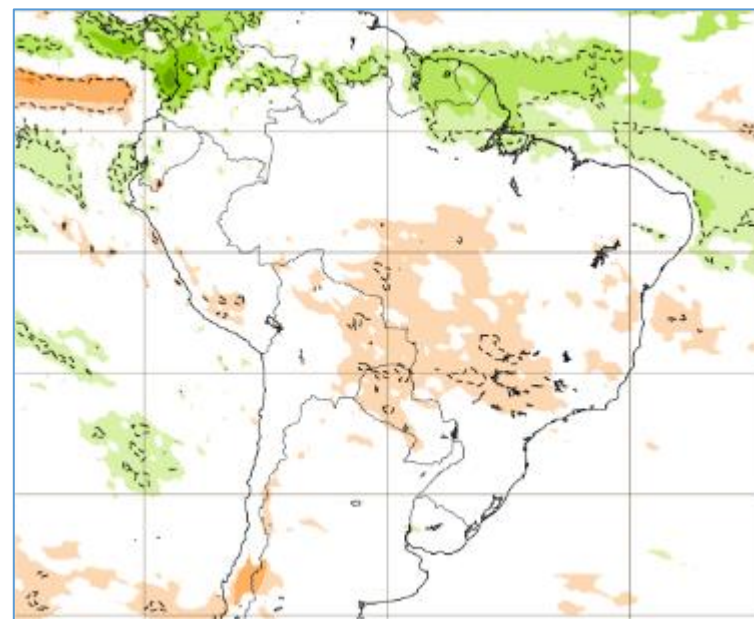


Tendência 3a e 4a semanas

18-25/07

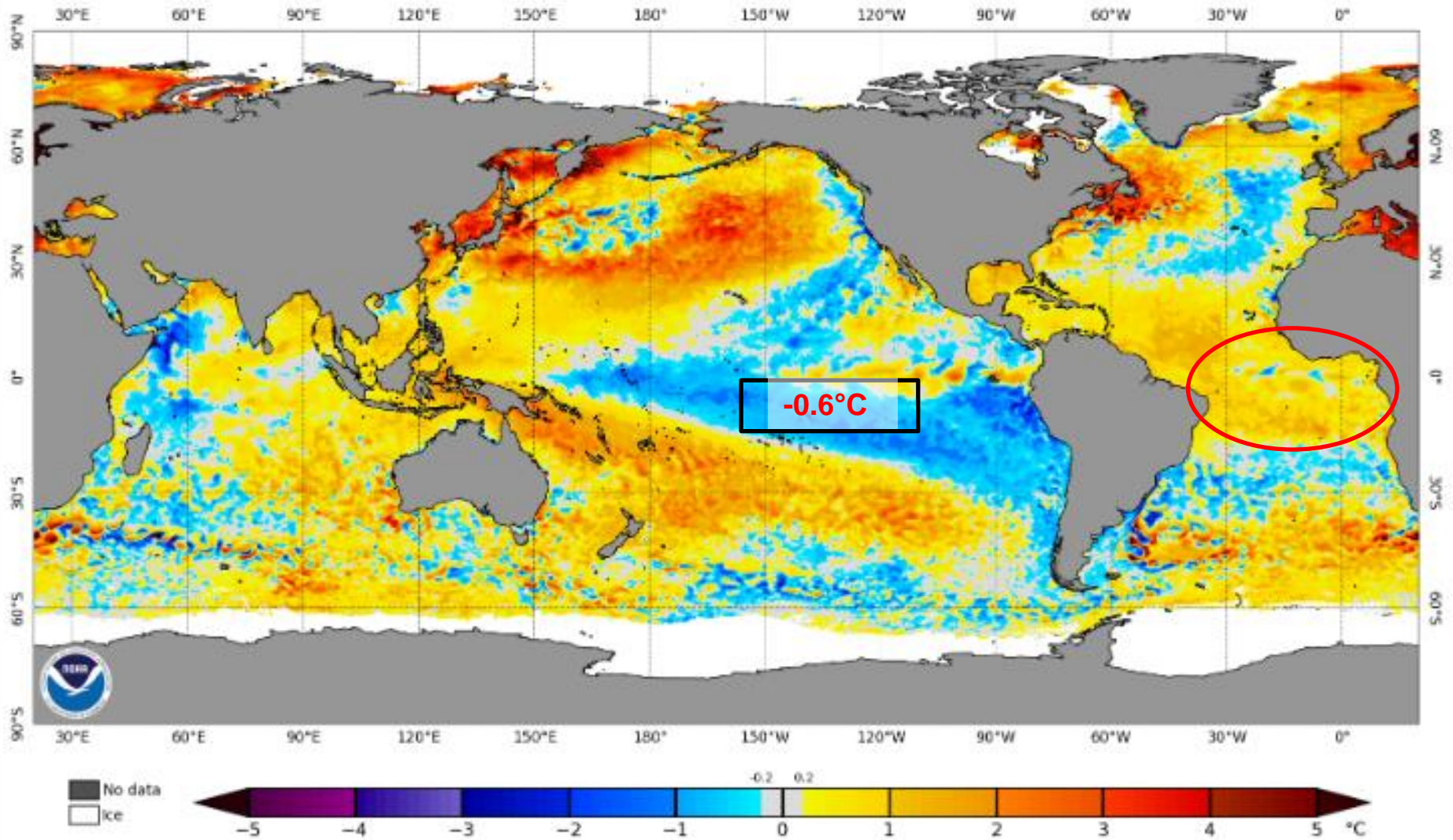


25/07-01/08



Status Atual: La Niña

NOAA Coral Reef Watch Daily 5km SST Anomalies (v3.1) 3 Jul 2022



Previsão sazonal de Chuva (JAS)

