

Diagnóstico e Previsões Meteorológicas e Hidrológicas para a Bacia do Rio Madeira

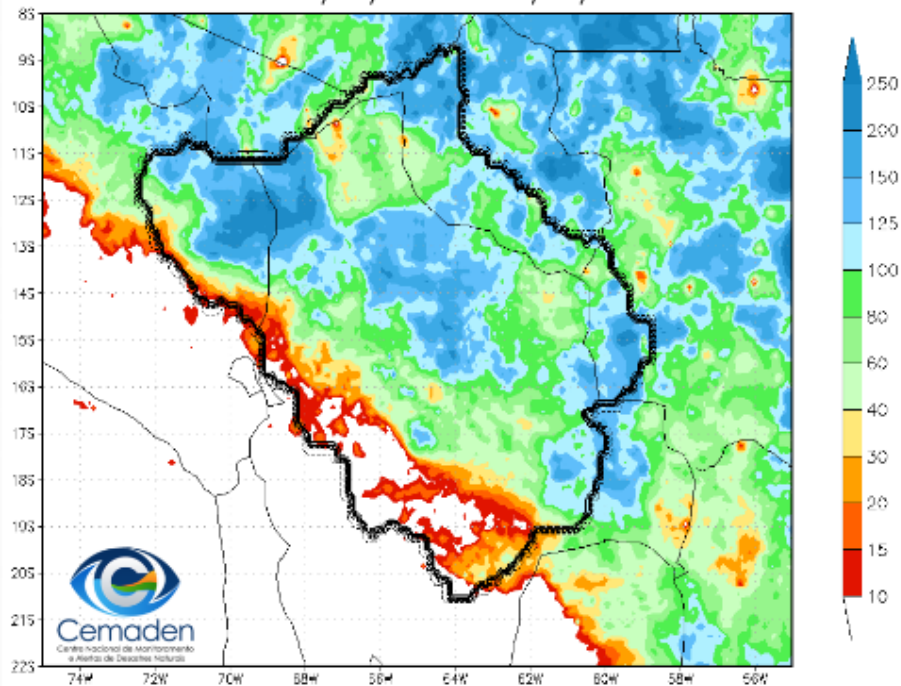


Cemaden
Centro Nacional de Monitoramento
e Alertas de Desastres Naturais

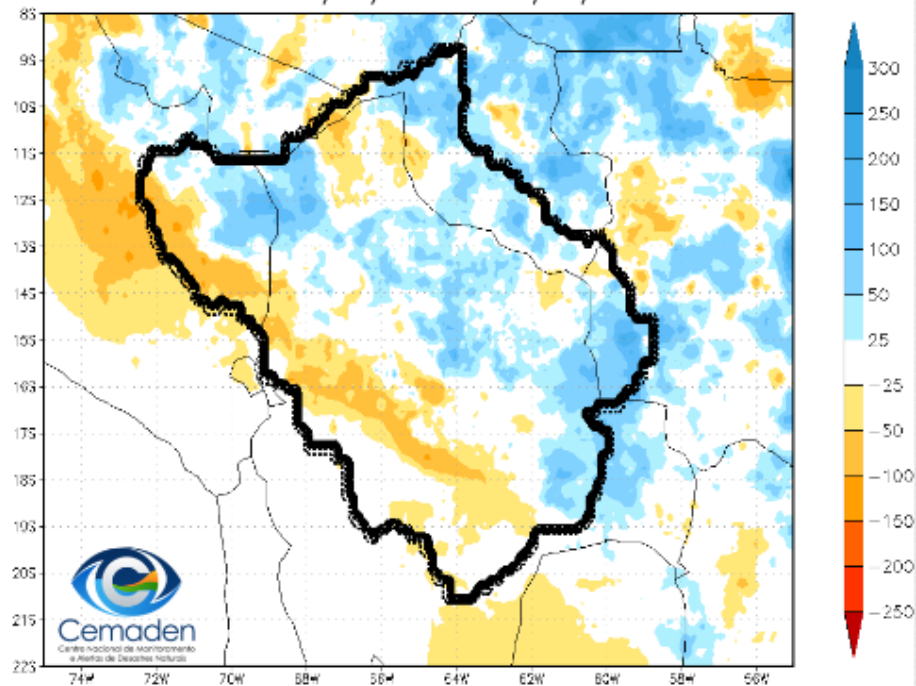
26 de Outubro de 2022

Precipitação Acumulada no mês de Outubro

Precipitação Acumulada (mm)
Período: 01/10/2022 – 25/10/2022

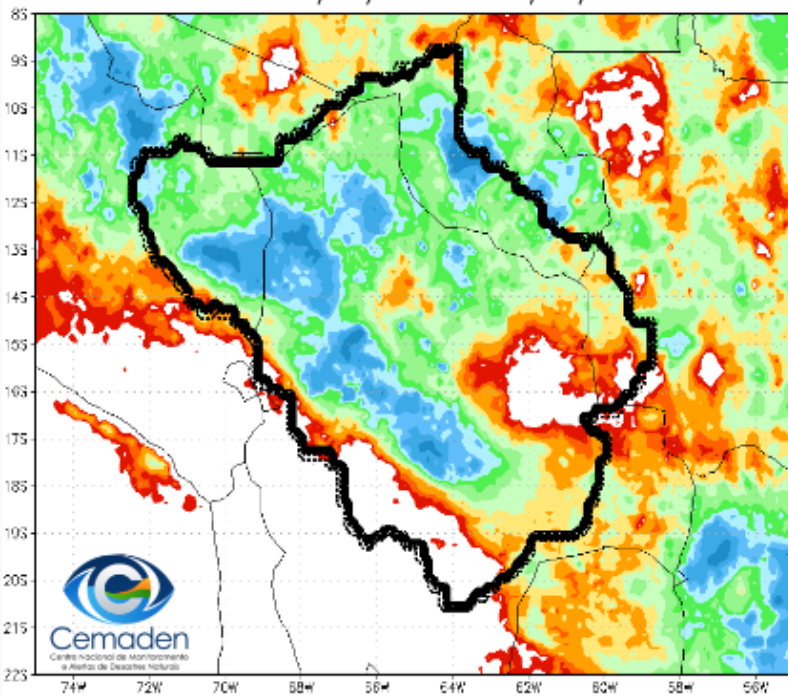


Anomalia de Precipitação Média (mm)
Período: 01/10/2022 – 25/10/2022

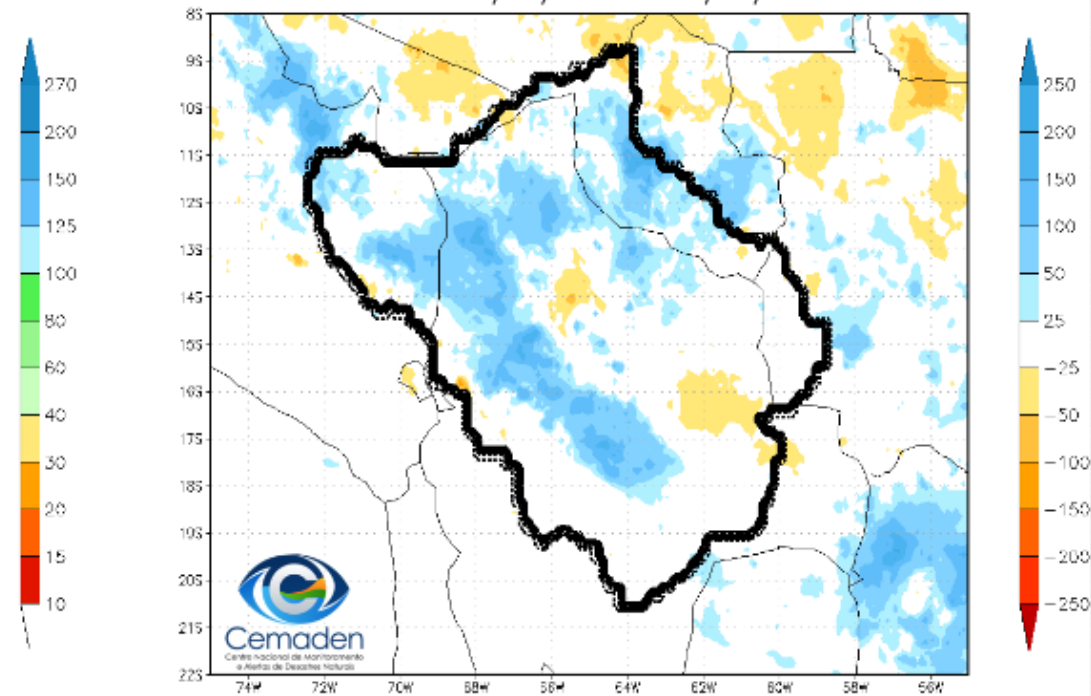


Precipitação Acumulada em Setembro

Precipitação Acumulada (mm)
Período: 01/09/2022 - 30/09/2022

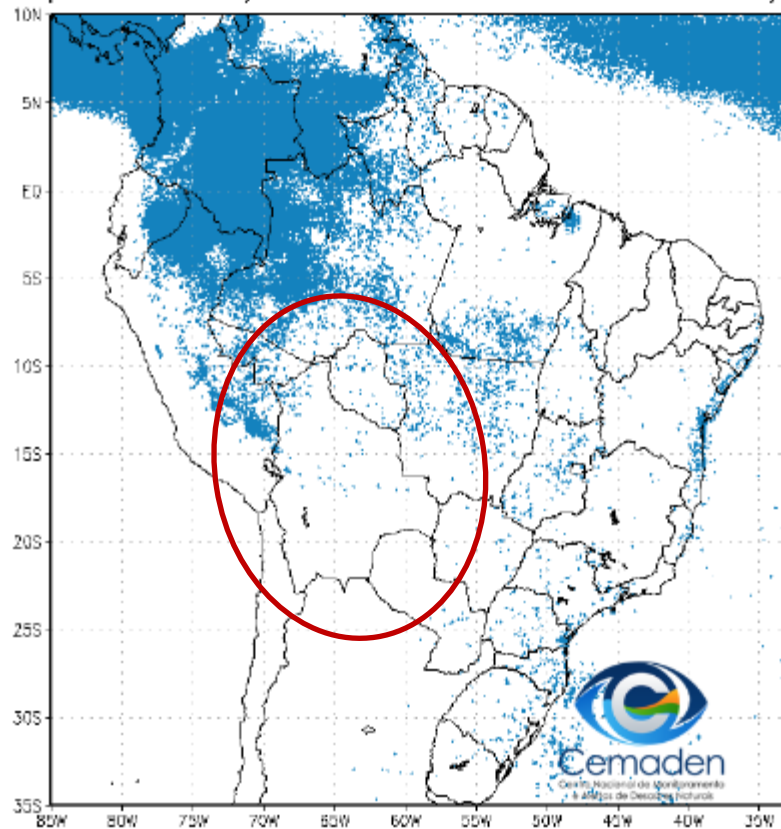


Anomalia de Precipitação Média (mm)
Período: 01/09/2022 - 30/09/2022

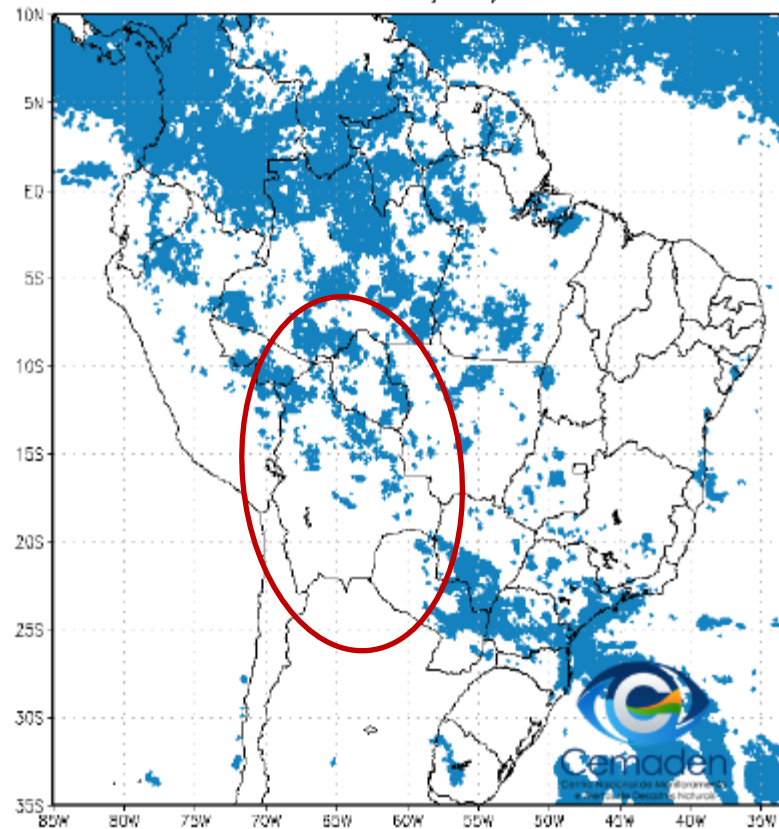


Situação da Estação Chuvosa

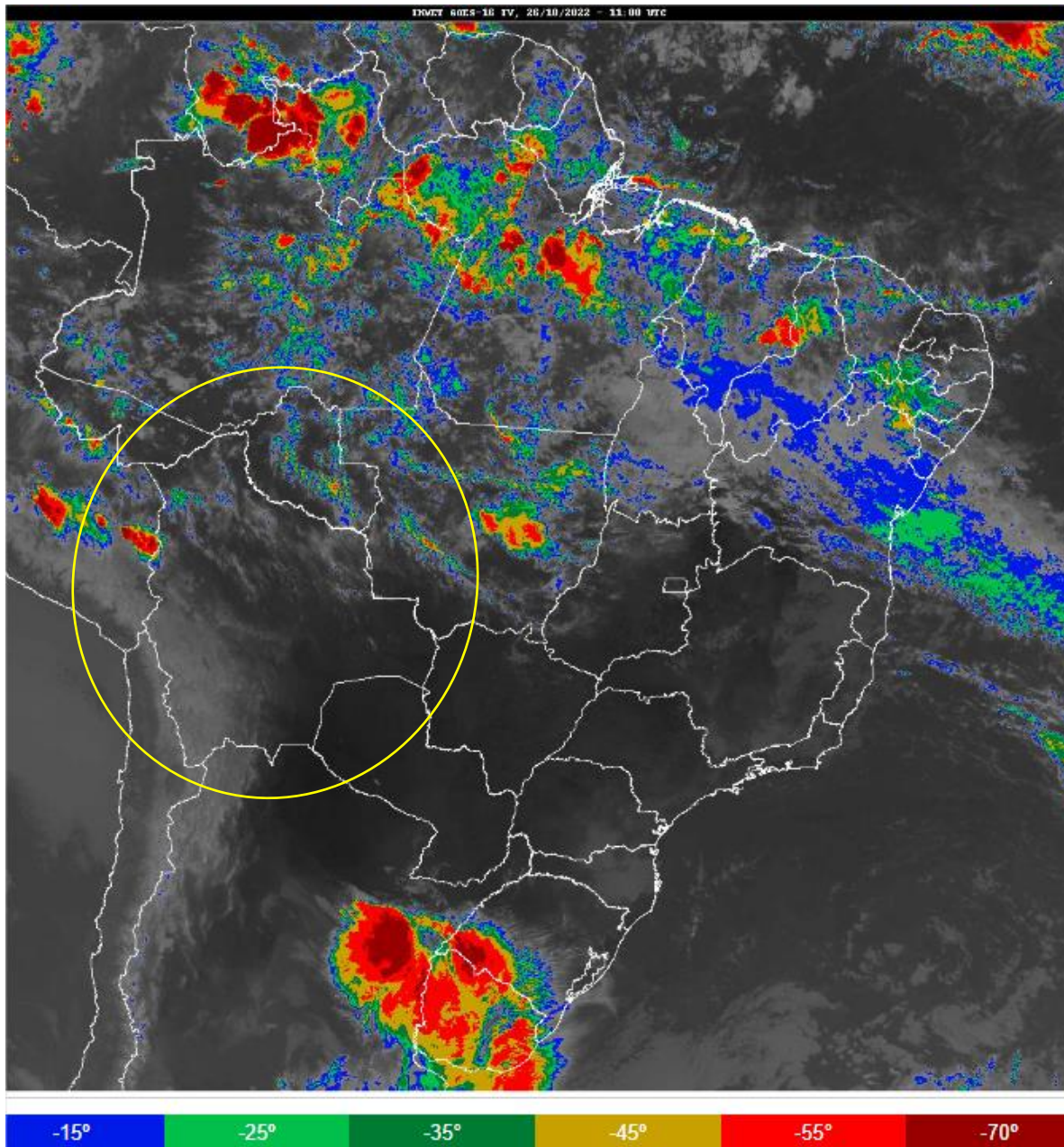
Climatologia da Precipitação (2001–2020)
Superior 3 mm/dia em 4 de 5 dias Período: 25/10



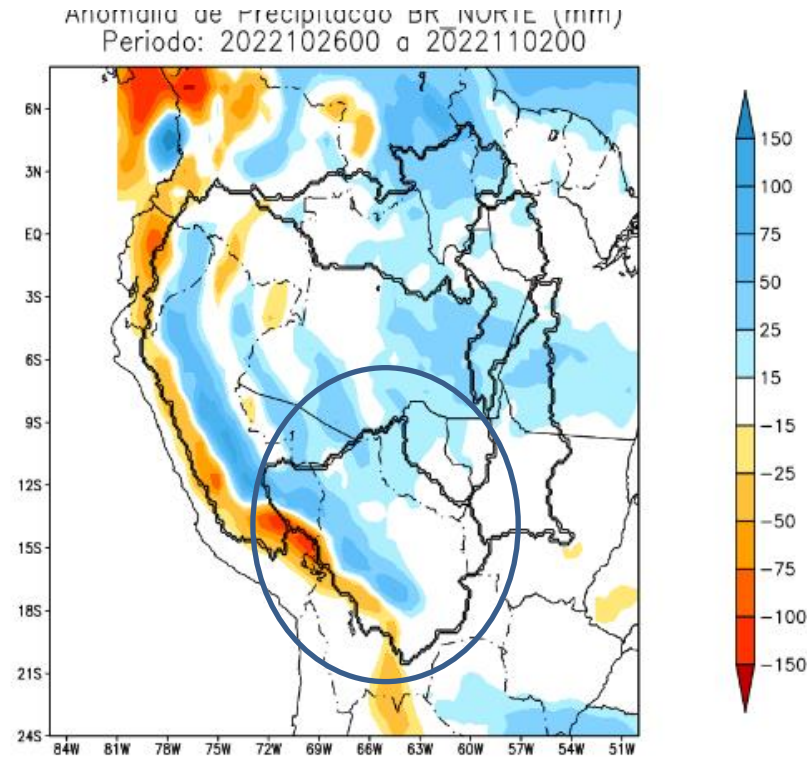
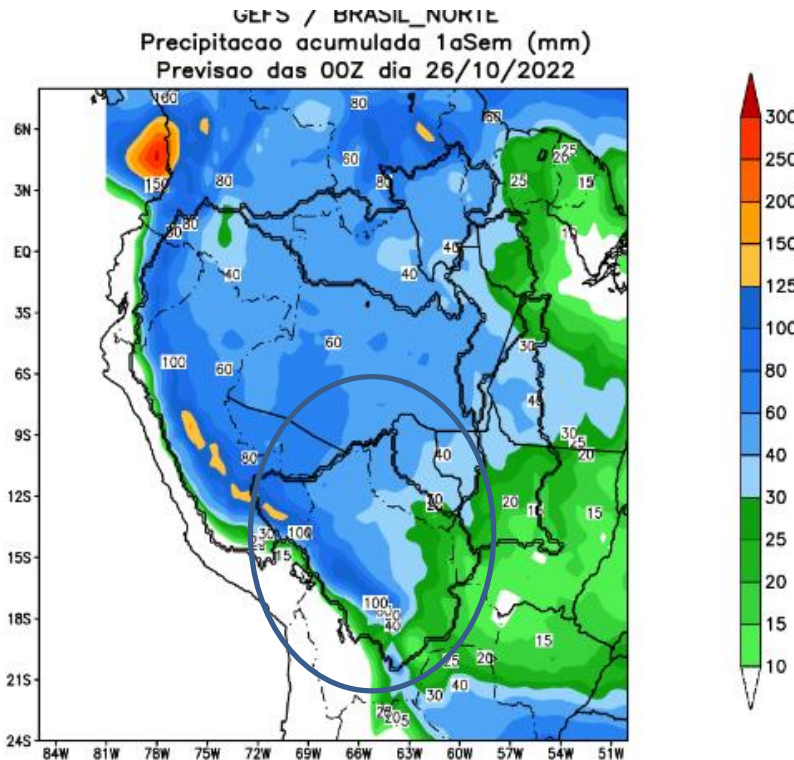
Precipitação A.S. Superior a 3 mm/dia por 4 de 5 dias
Período: 25/10/2022



Situação meteorológica atual

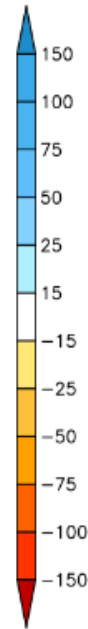
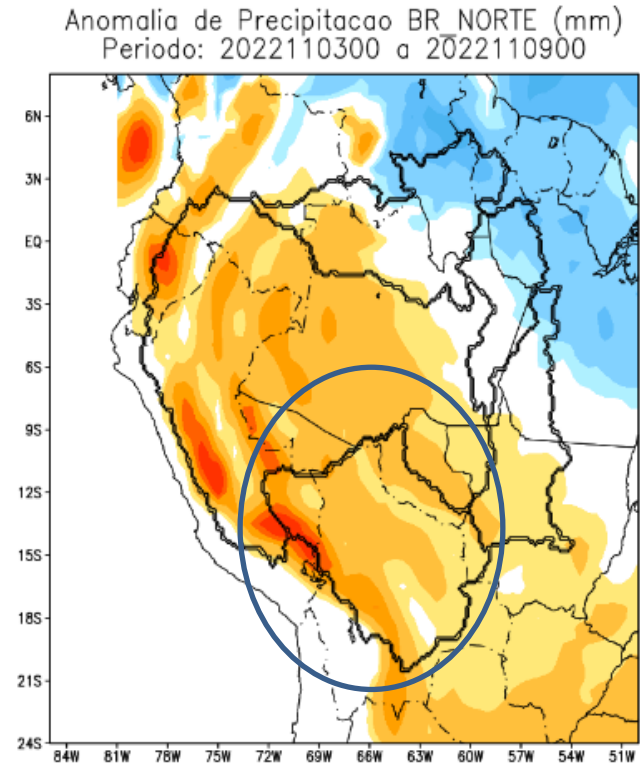
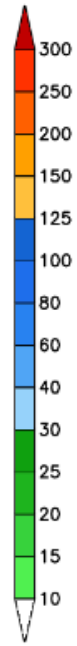
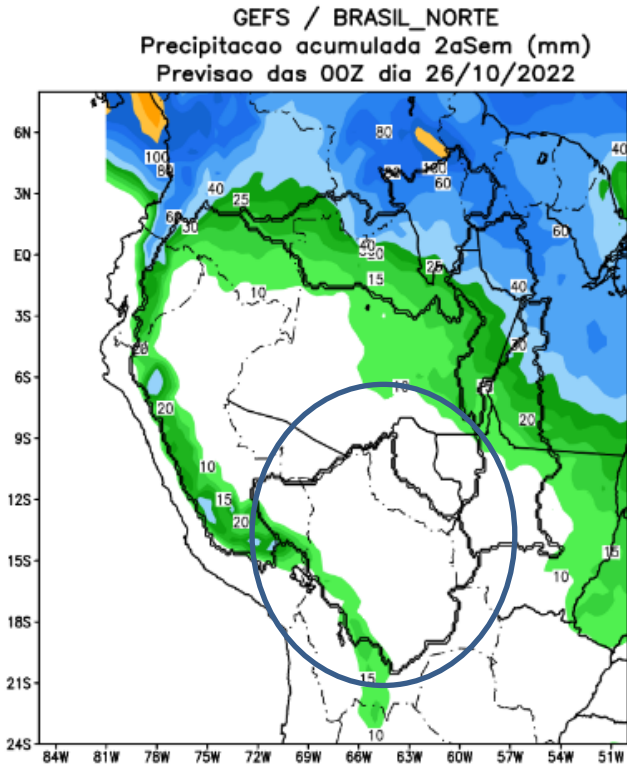


Previsão de chuva para os próximos 7 dias



Modelo GFS/NOAA

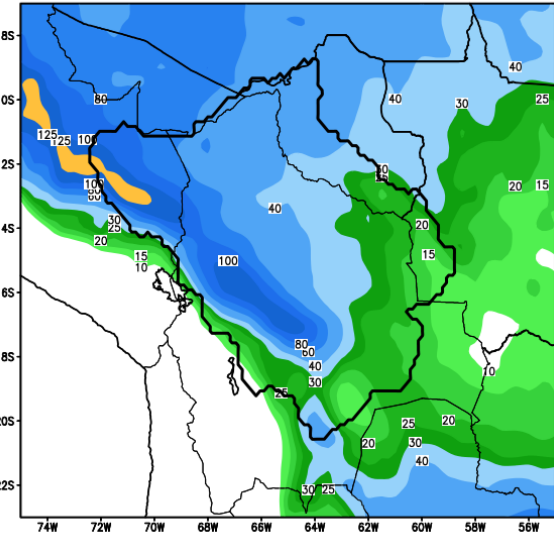
Tendência para a Segunda Semana



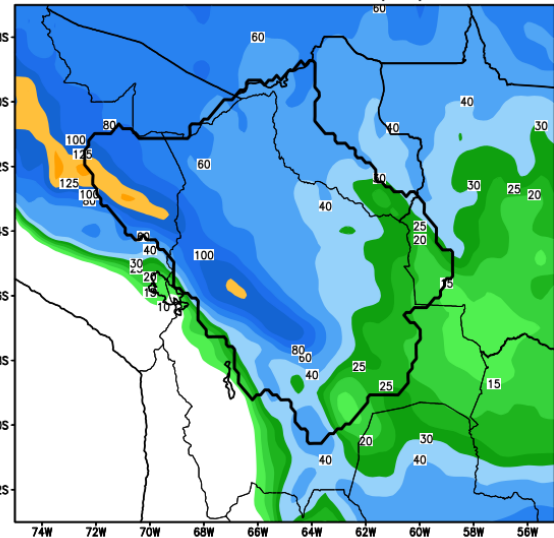
Previsão de chuva para o Rio Madeira

7 Dias

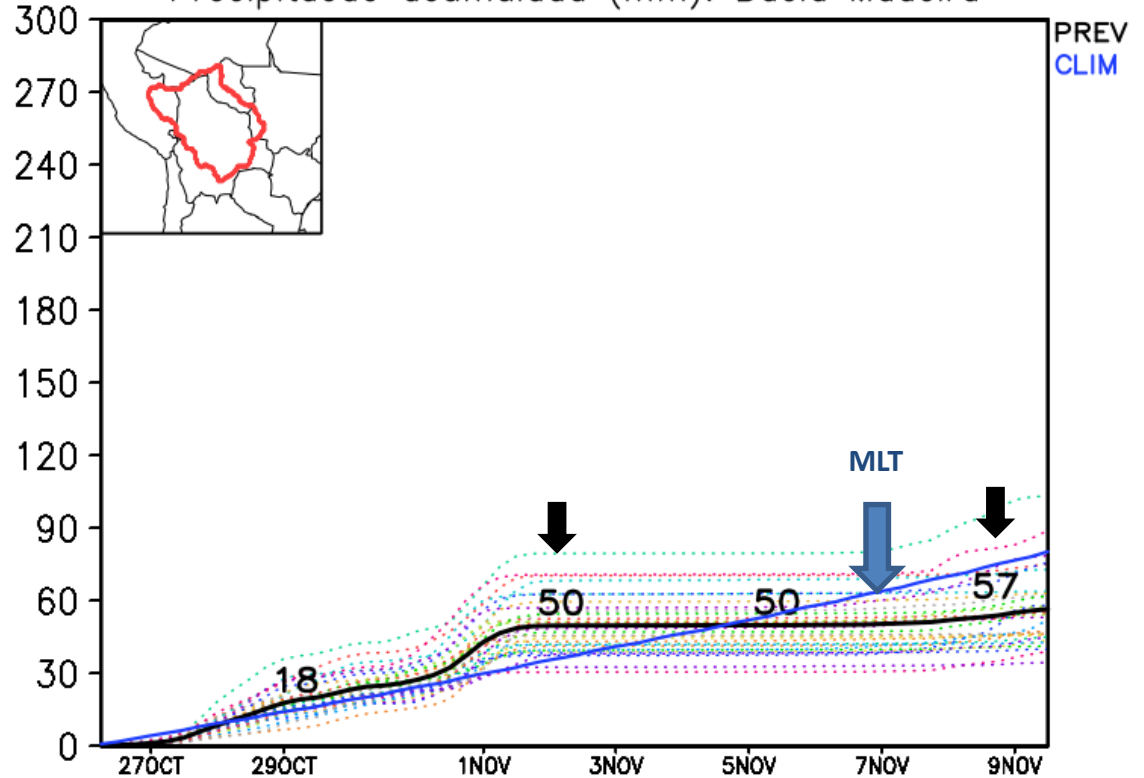
GEFS / Bacia do Rio Madeira
Precipitação acumulada em 7 dias (mm)
Previsão das 00Z dia 26/10/2022



GEFS / Bacia do Rio Madeira
Precipitação acumulada em 14 dias (mm)
Previsão das 00Z dia 26/10/2022

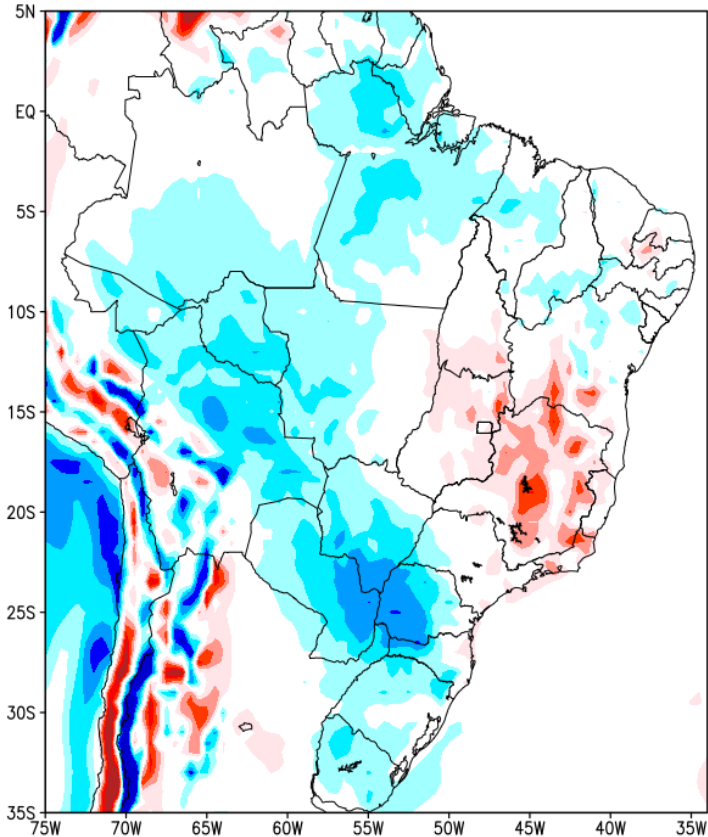


Precipitação acumulada (mm): Bacia Madeira

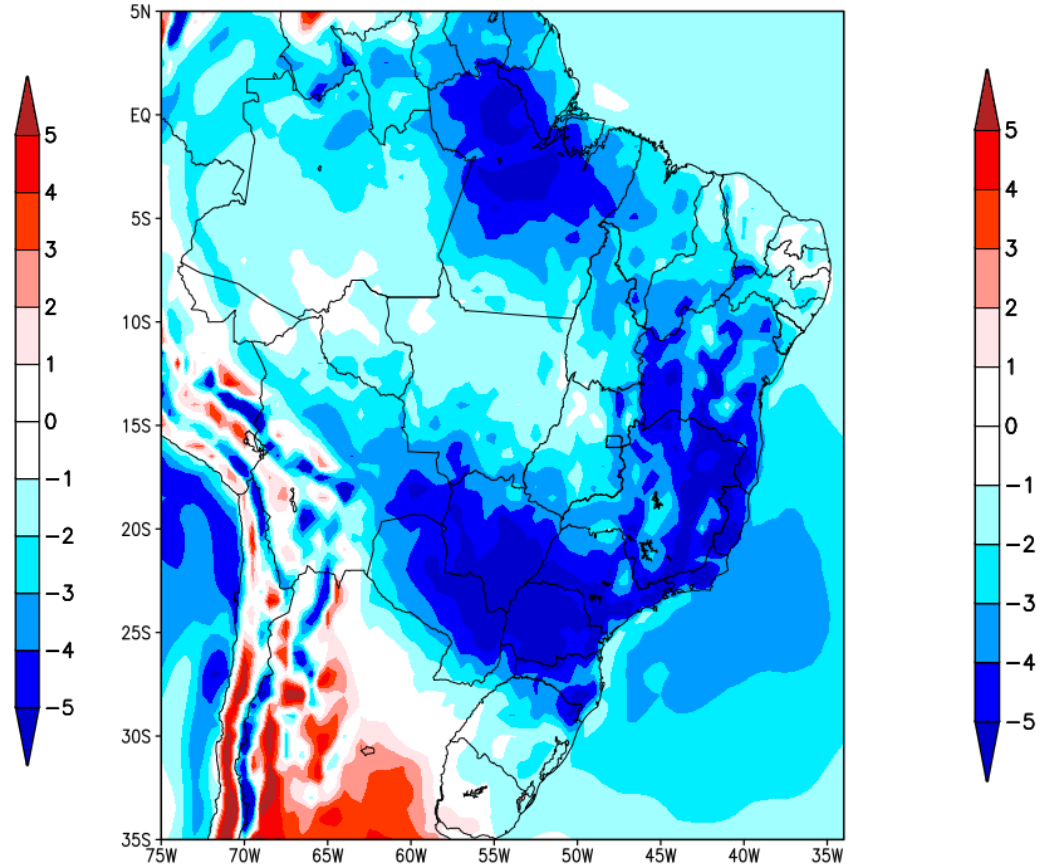


Previsão de Temperatura

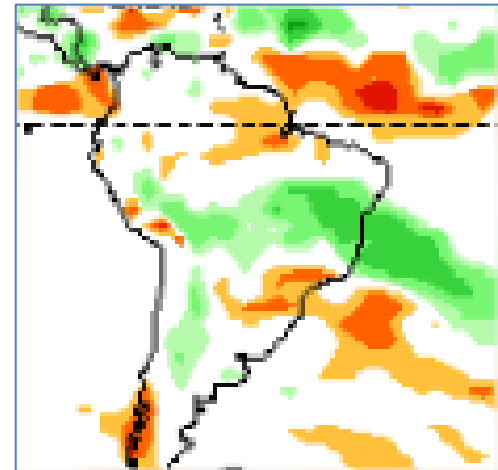
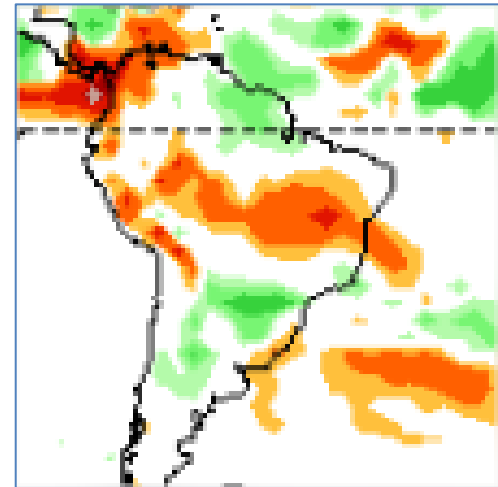
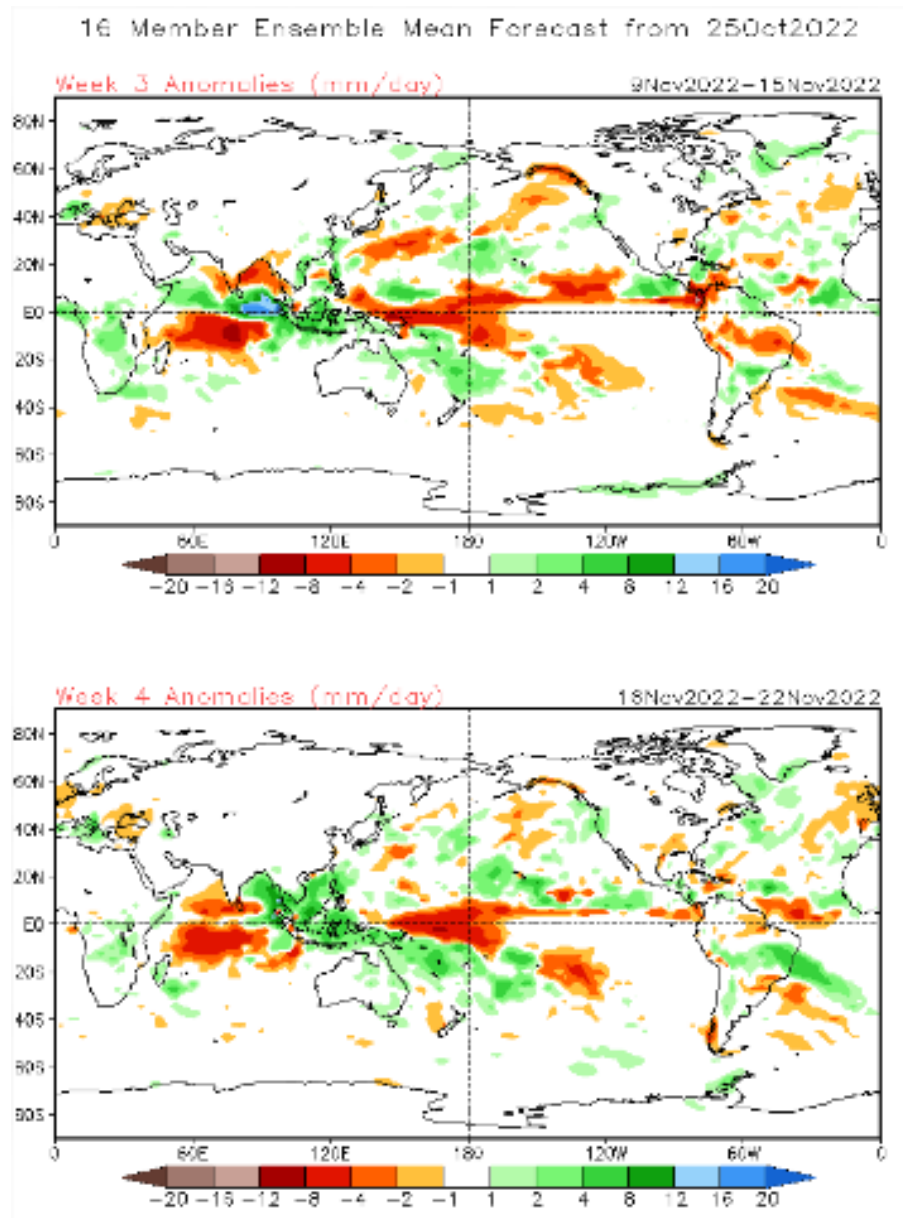
Anomalia de Temperatura BR (C)
Período: 2022102600 a 2022110200



Anomalia de Temperatura BR (C)
Período: 2022110300 a 2022110900

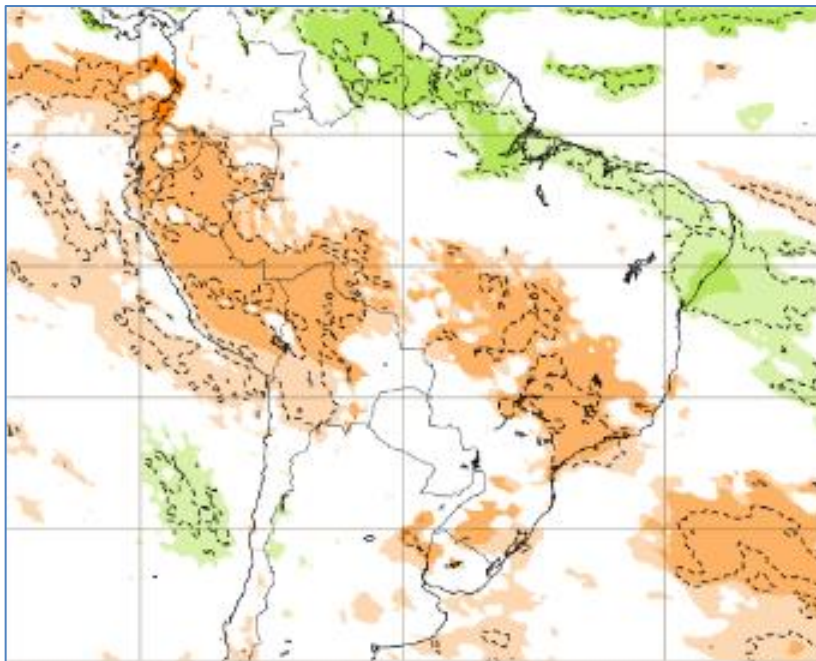


Tendência 3a e 4a semanas

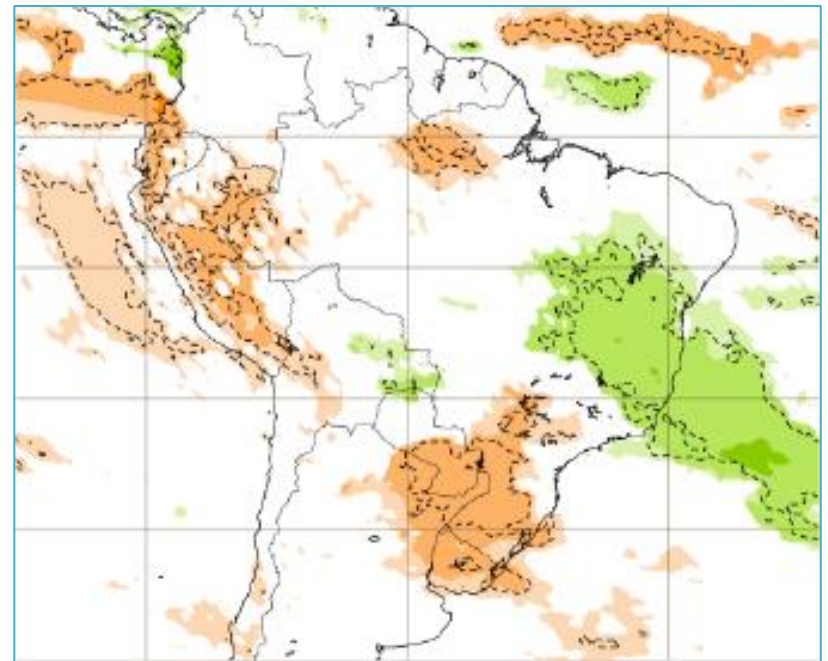


Tendência para 3ª e 4ª semanas

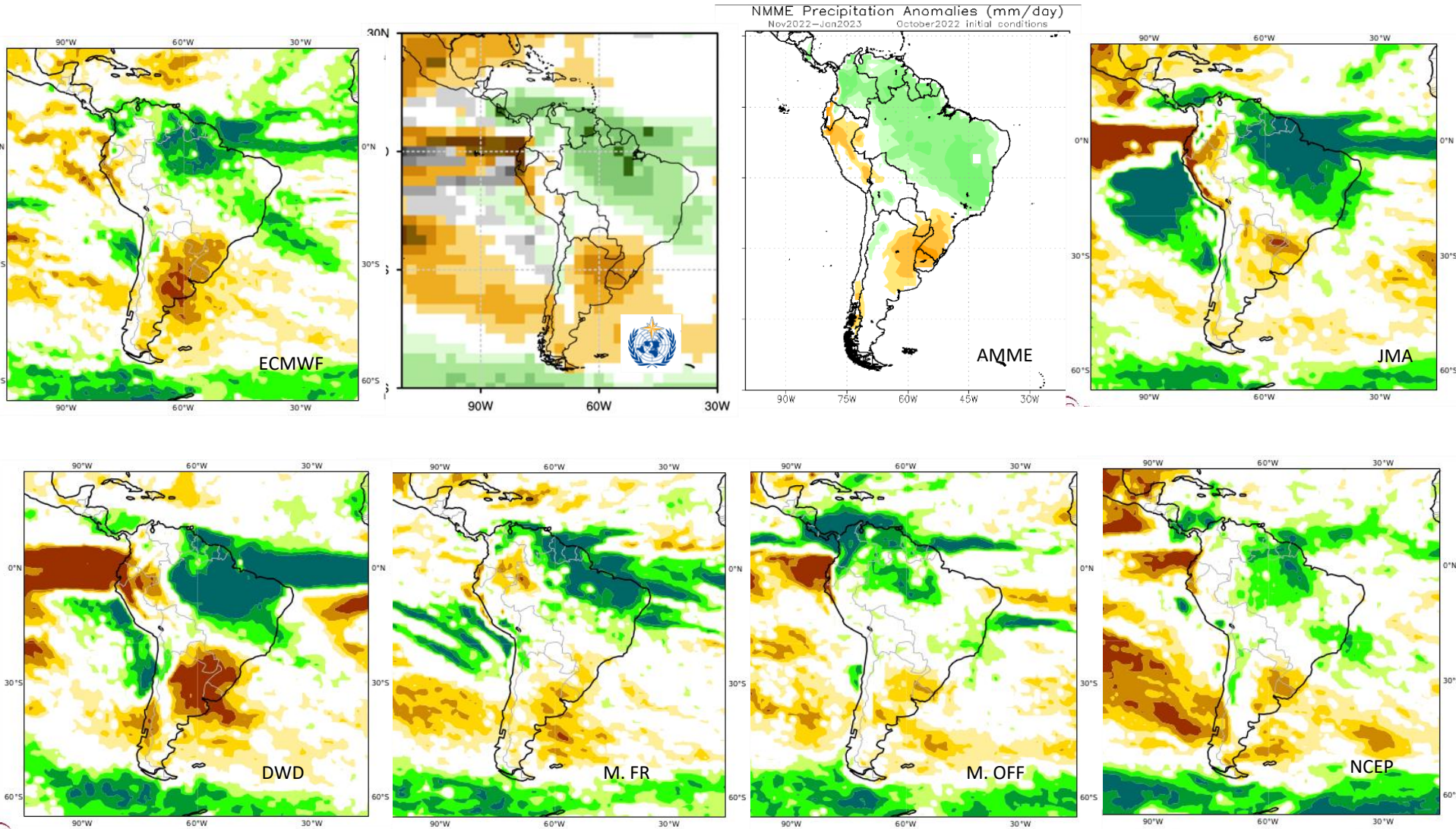
07-14/11



14-21/11

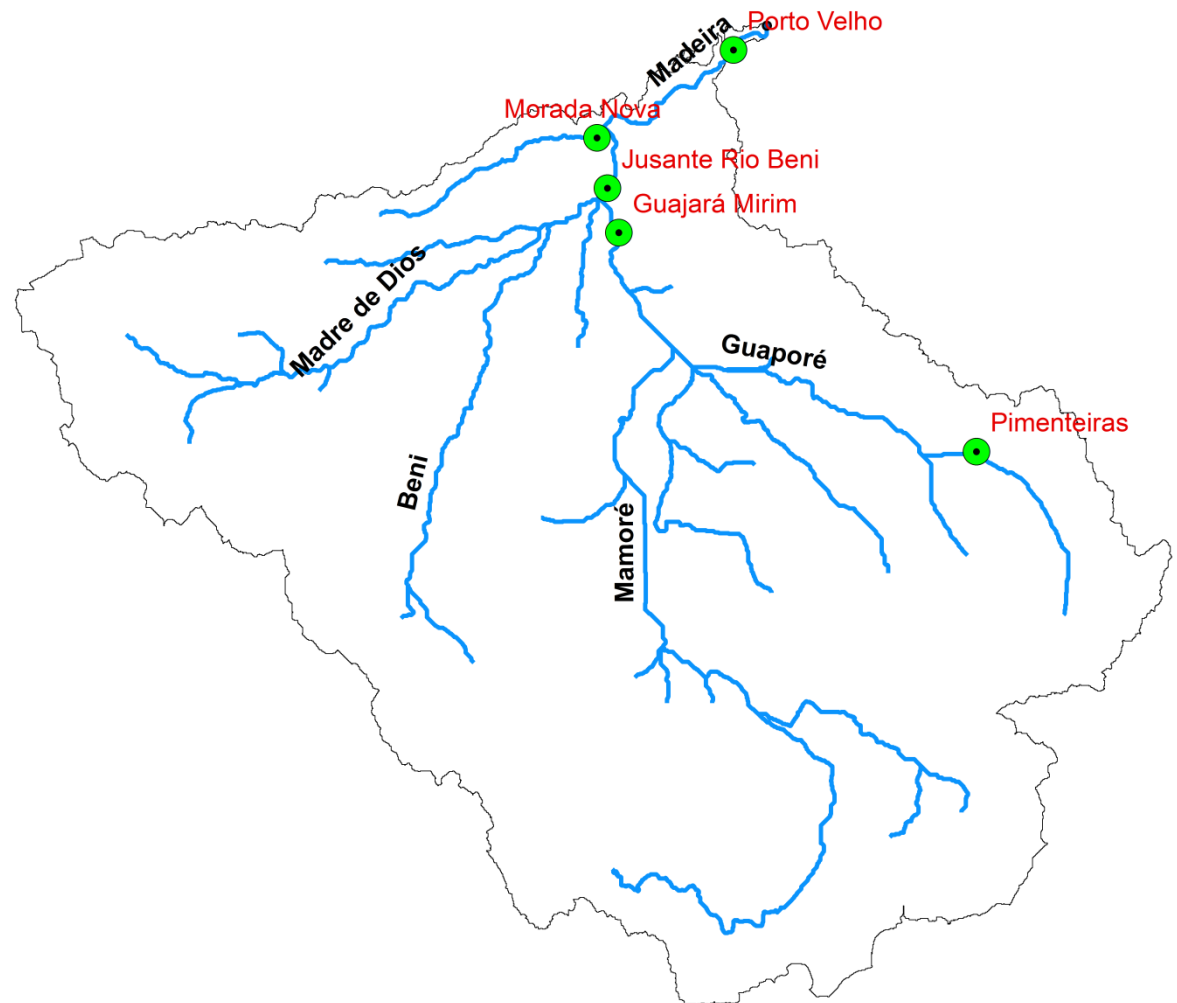


Previsão sazonal de Chuva NDJ

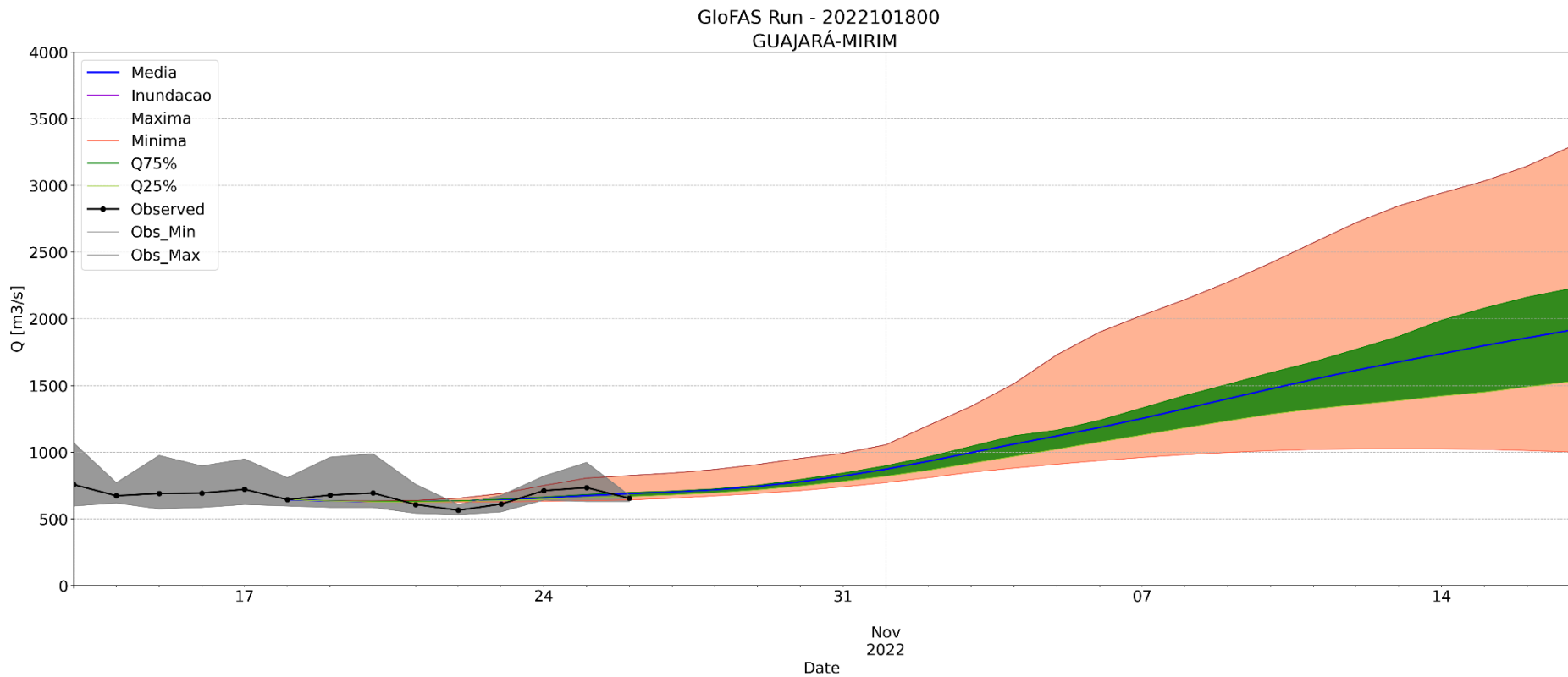


Previsão Hidrológica: Bacia do Rio Madeira

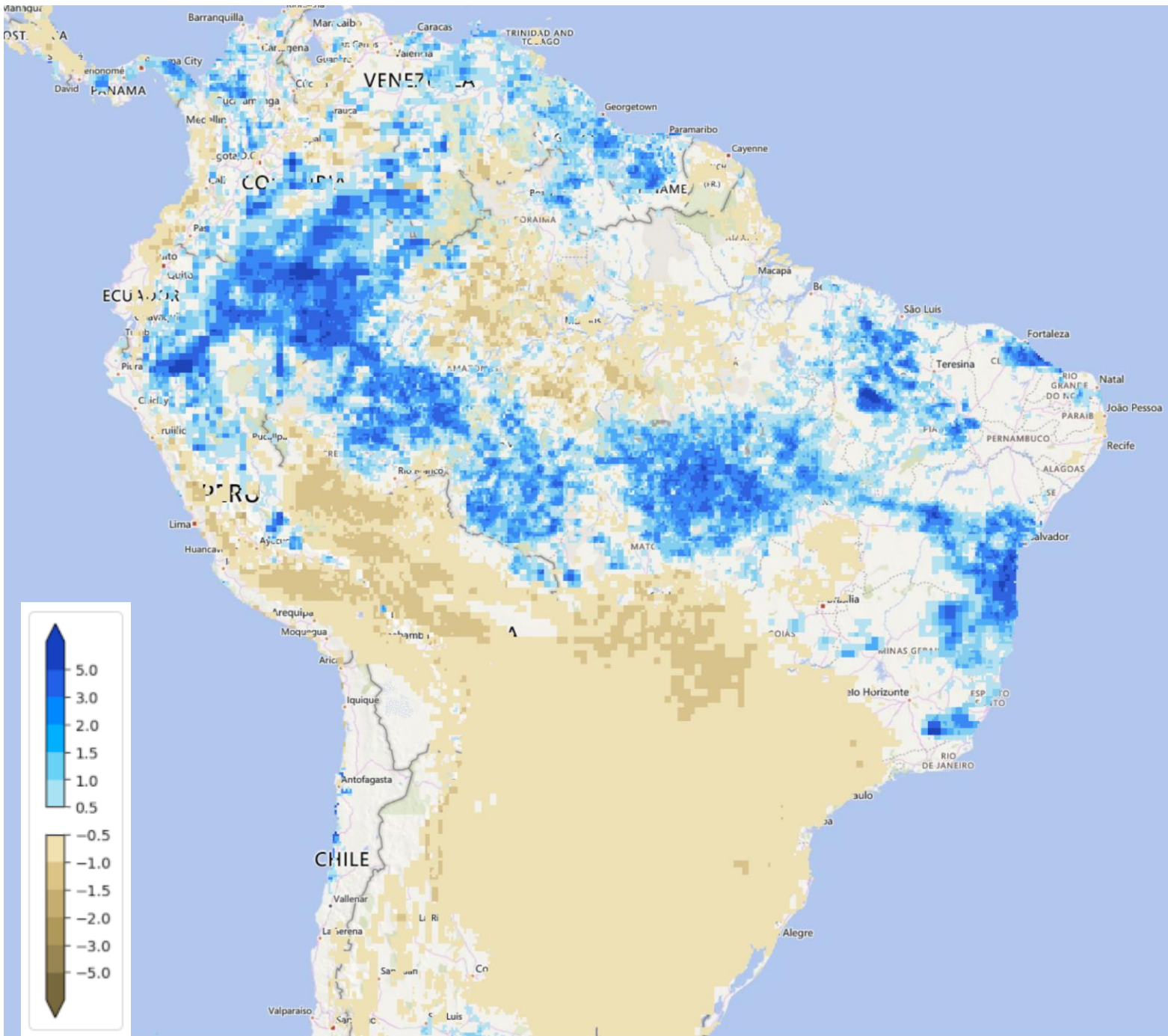
Previsão de vazão realizada por meio do Modelo Hidrológico Distribuído – Lisflood/GLOFAS (Chuva-Vazão), usando como entradas as previsões de precipitação fornecidas pelo modelo por conjunto ECMWF (Centro Europeu)



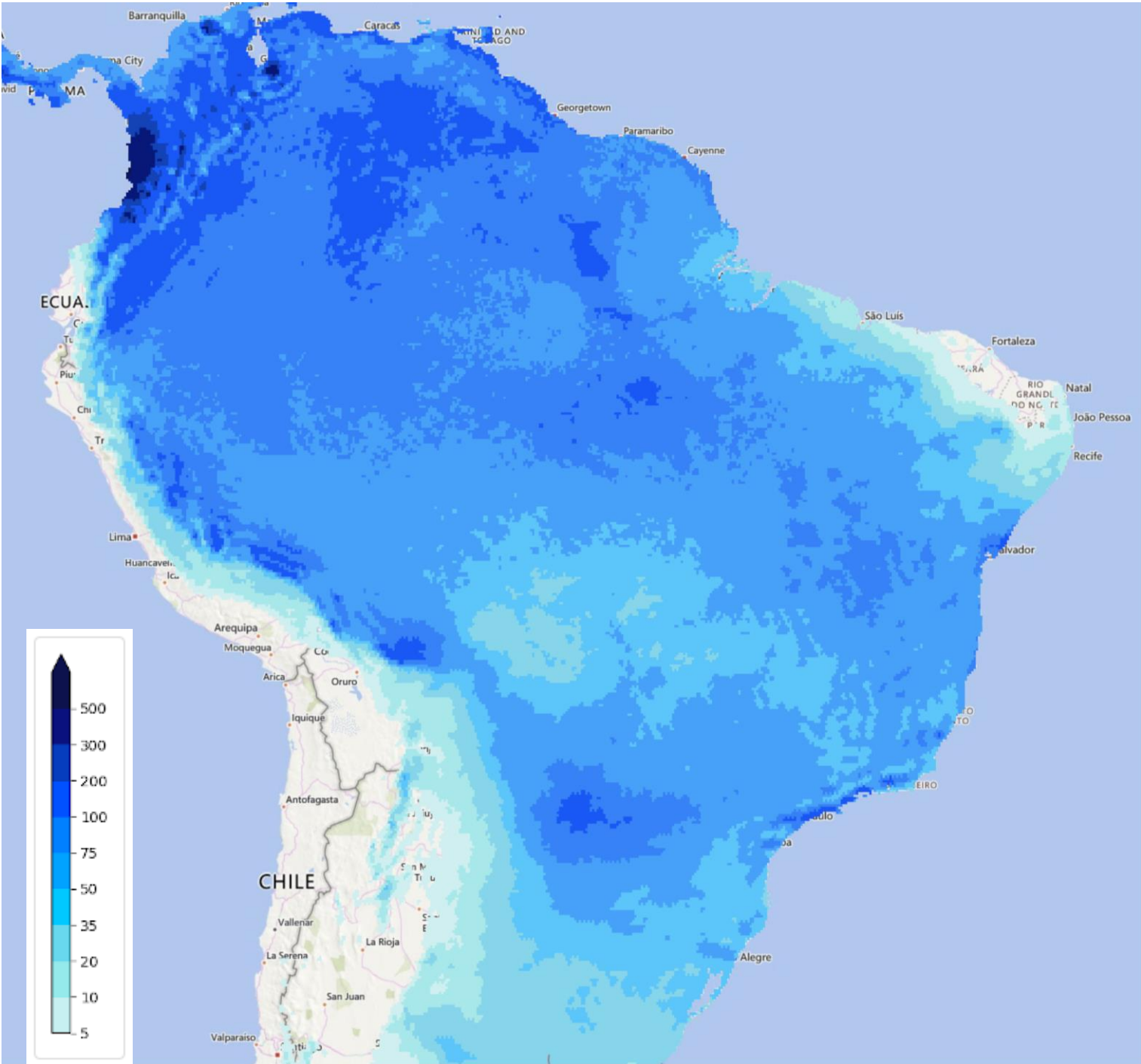
Análise Previsão: 18/10/2022



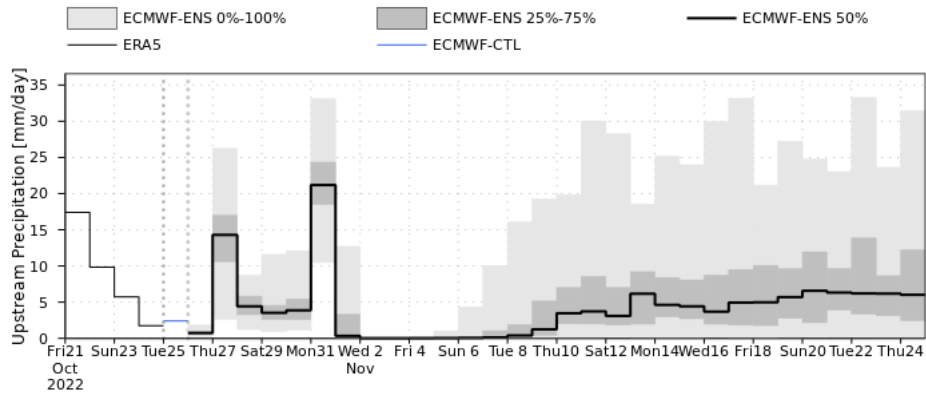
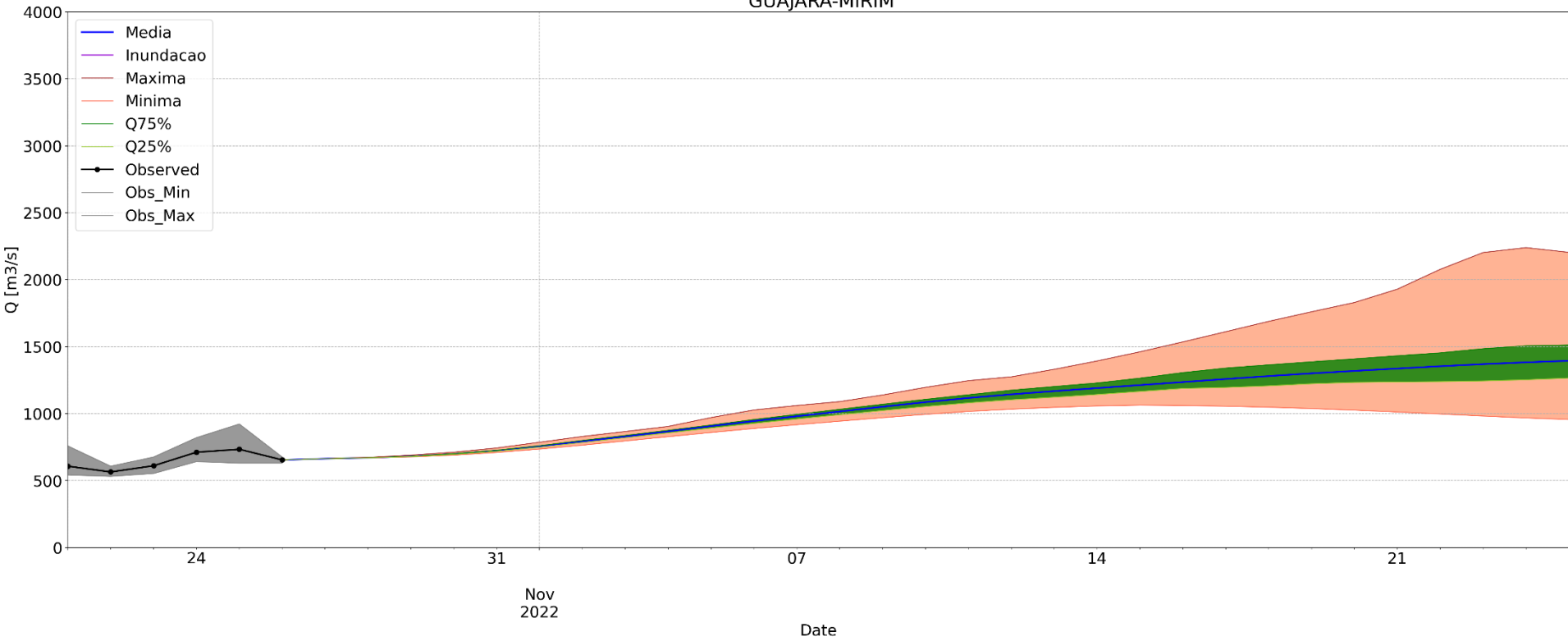
Anomalia chuva acumulada 3 dias (ERA5)



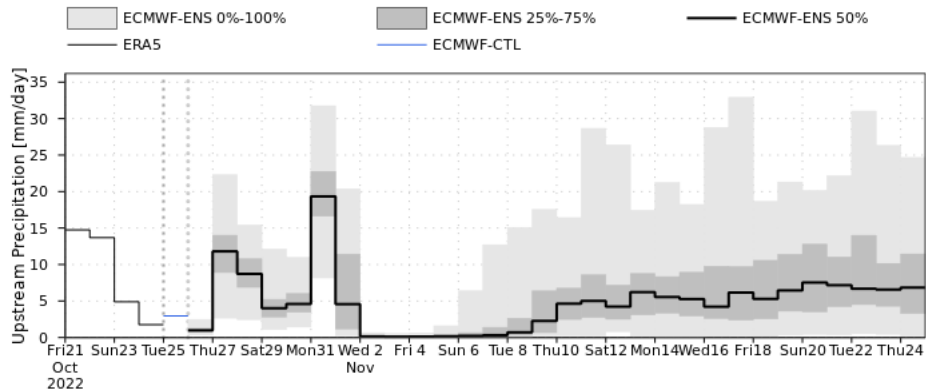
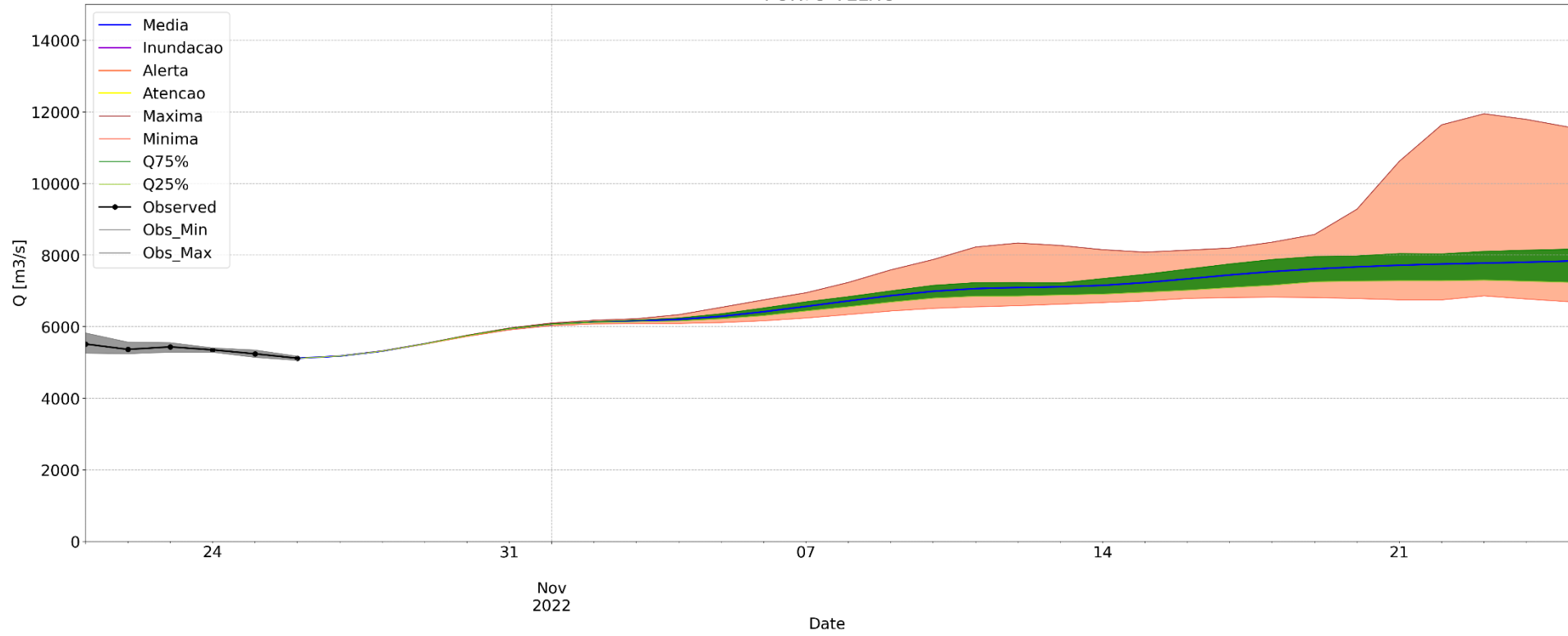
Previsão de chuva acumulada para 10 dias



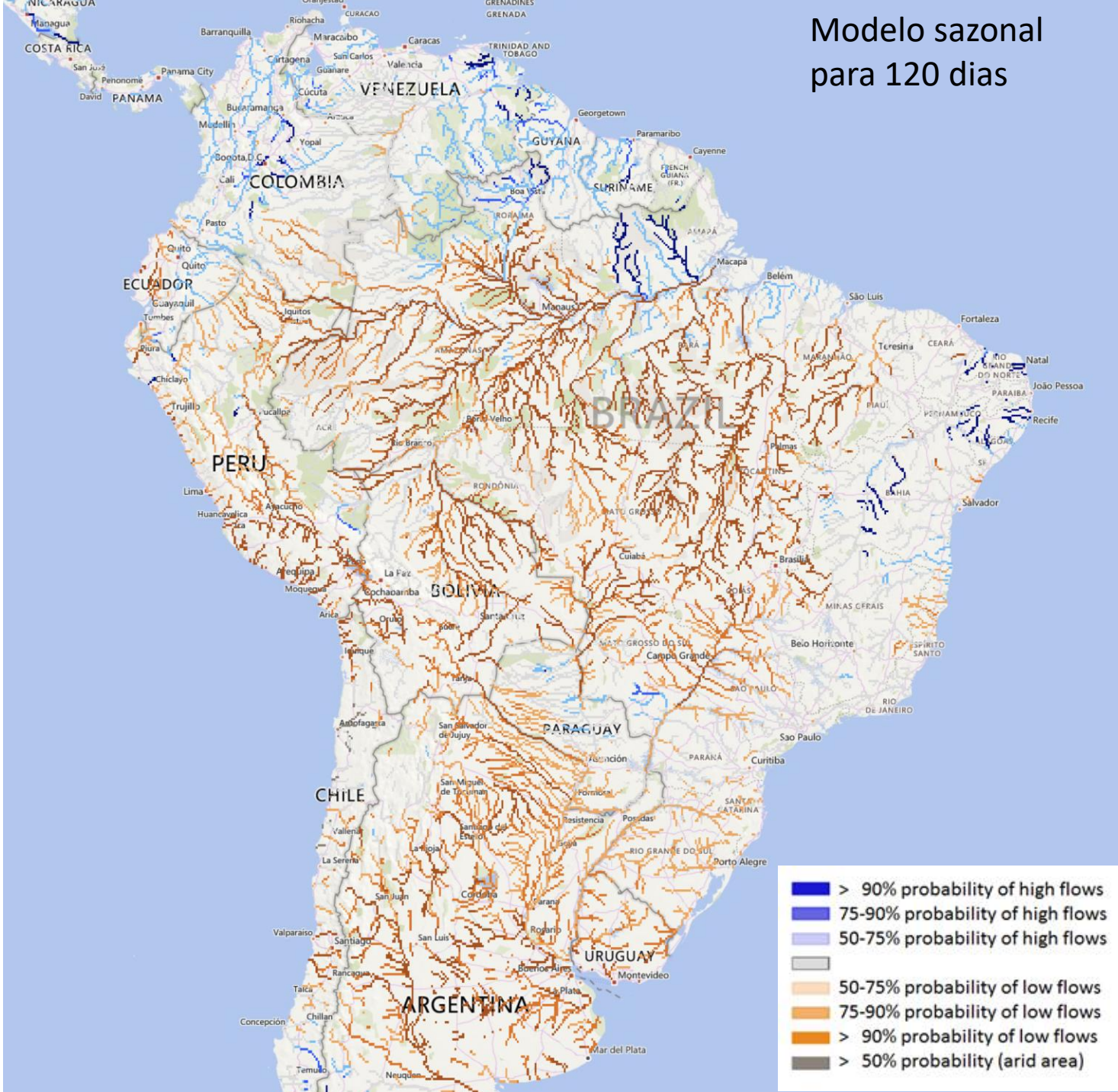
GloFAS Run - 2022102600
GUAJARÁ-MIRIM



GloFAS Run - 2022102600
PORTO VELHO

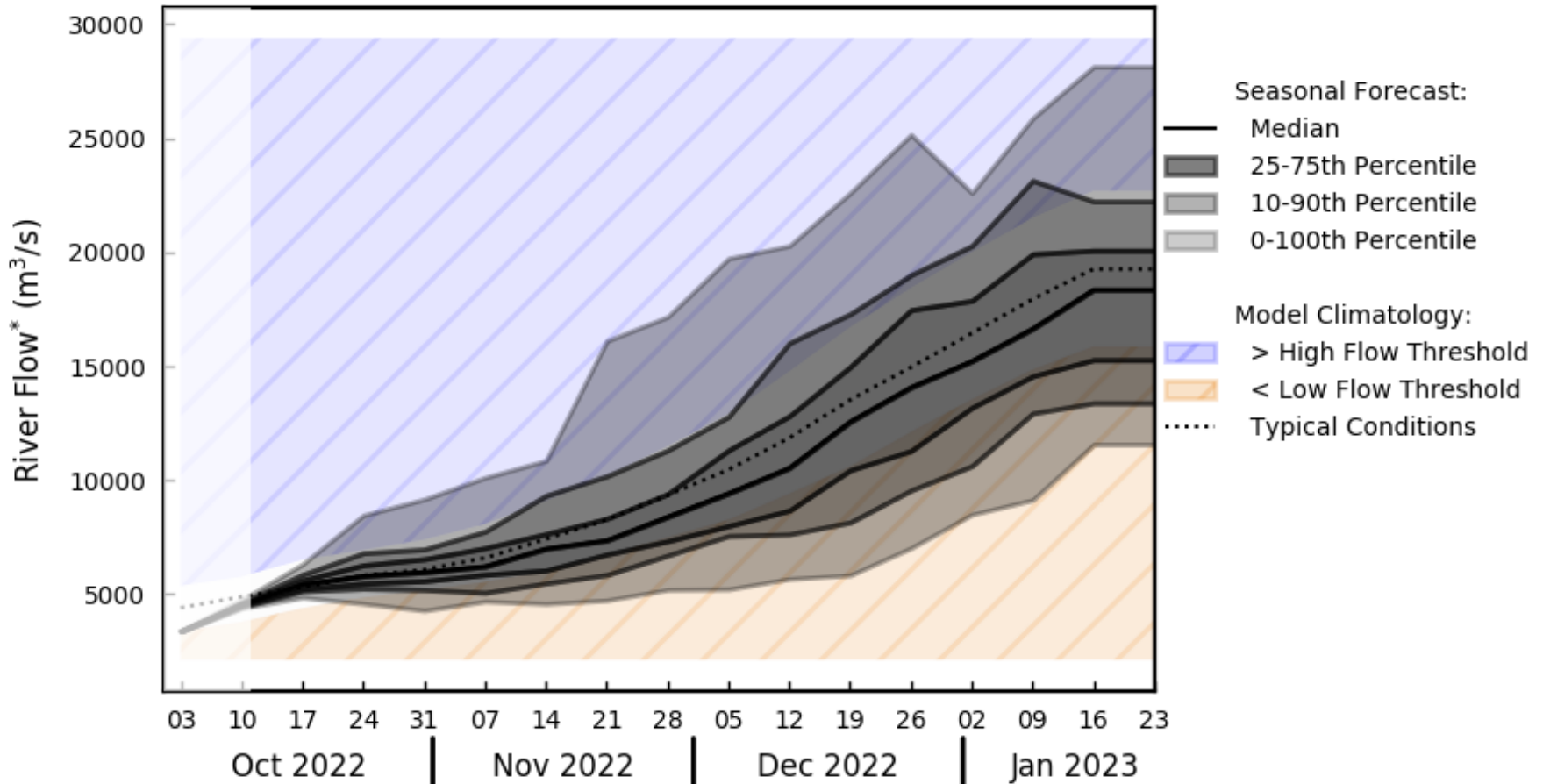


Modelo sazonal para 120 dias



Previsão Sazonal: GLOFAS

Cachuela Esperanza

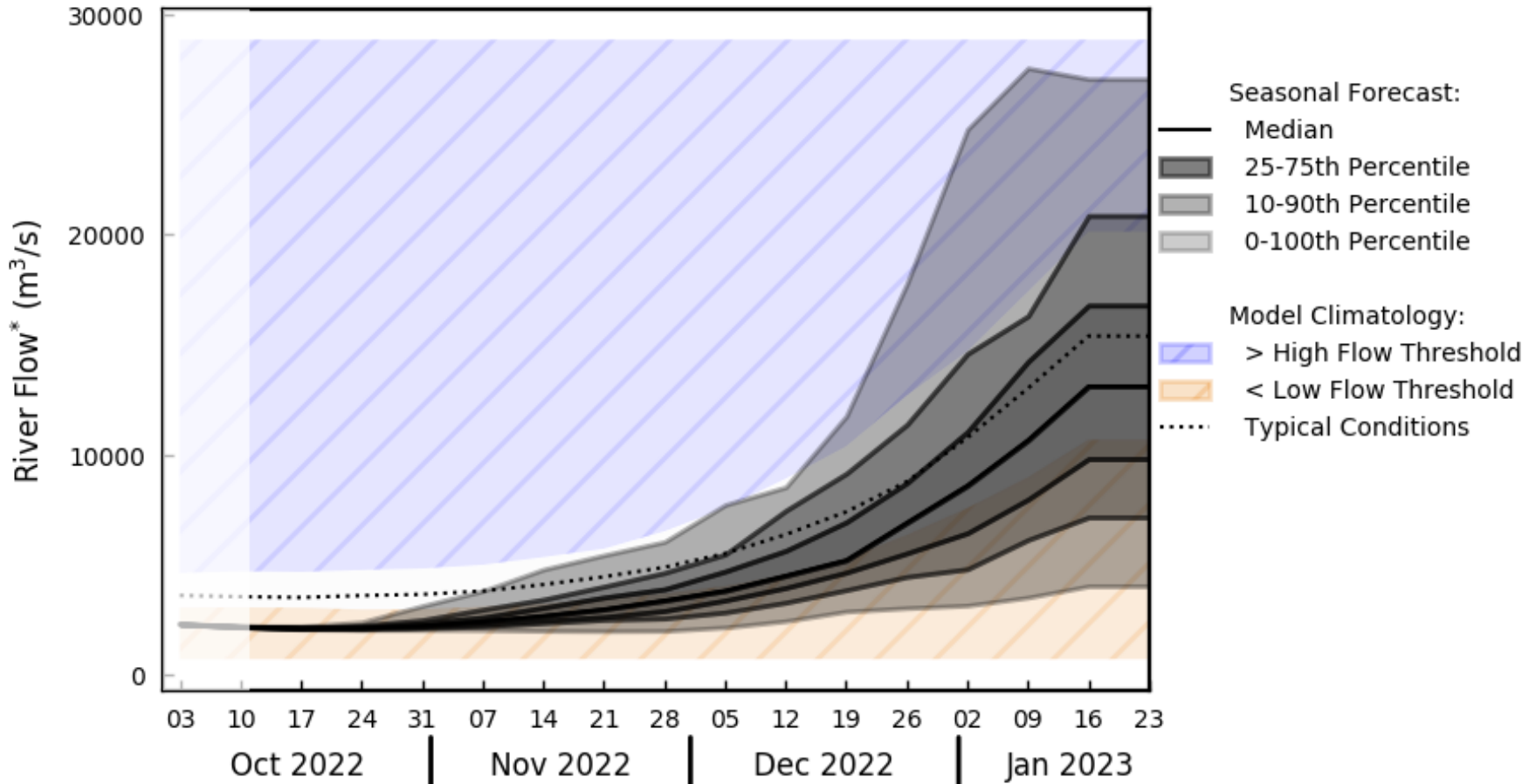


*River flow is a weekly average, displayed at start of week (dates shown)

** High and low flow thresholds refer to the 80th and 20th percentiles of the model climatology

Previsão Sazonal: GLOFAS

Guajar-Mirim

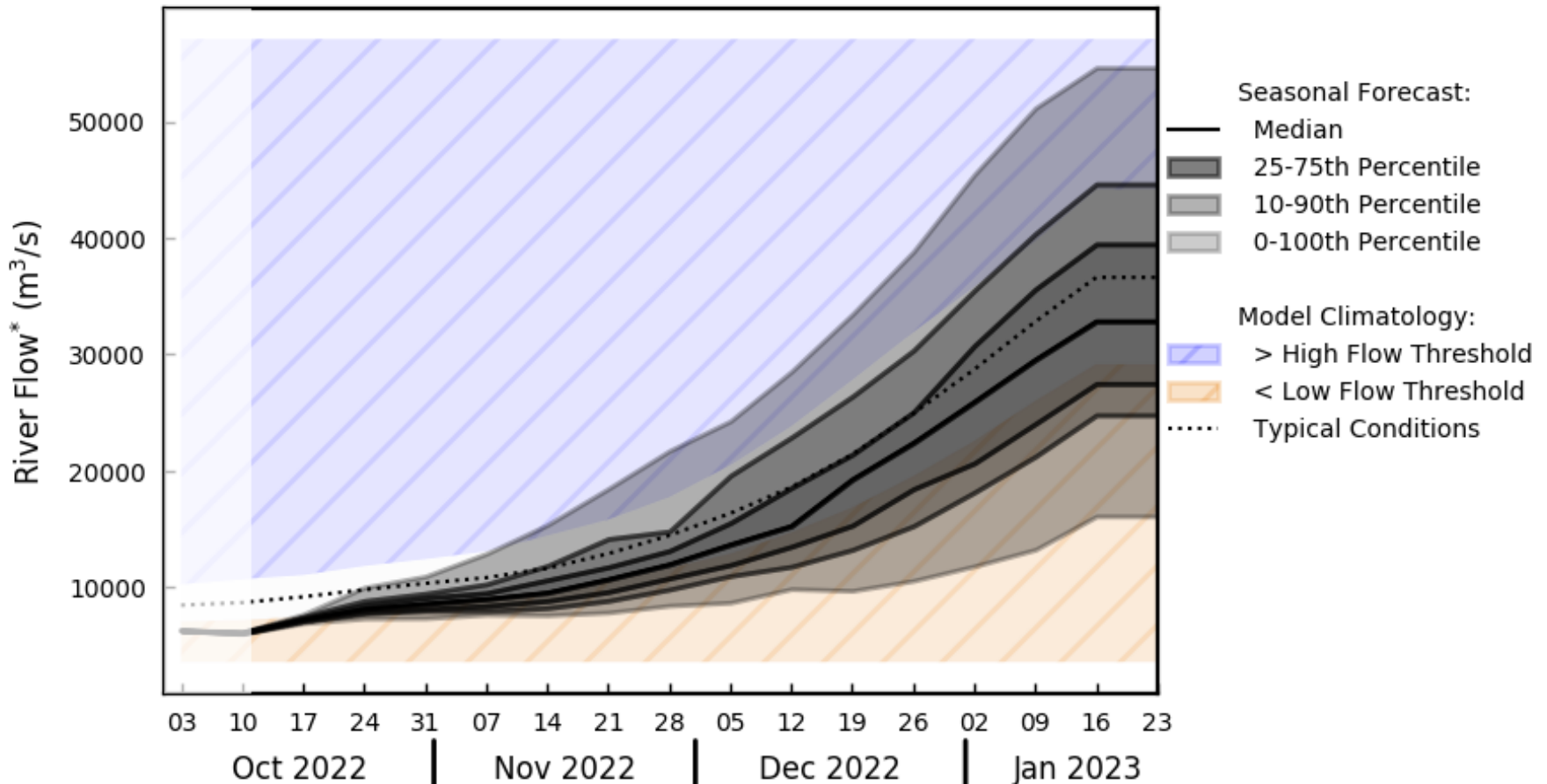


*River flow is a weekly average, displayed at start of week (dates shown)

** High and low flow thresholds refer to the 80th and 20th percentiles of the model climatology

Previsão Sazonal: GLOFAS

Porto Velho



*River flow is a weekly average, displayed at start of week (dates shown)

** High and low flow thresholds refer to the 80th and 20th percentiles of the model climatology

Contato:

Márcio Augusto Ernesto de Moraes

Pesquisador Titular

marcio.moraes@cemaden.gov.br

(12) 3205 - 0146

Agradecimentos:

