

Monitoramento da situação da seca na Região Sul

21 de Junho de 2023

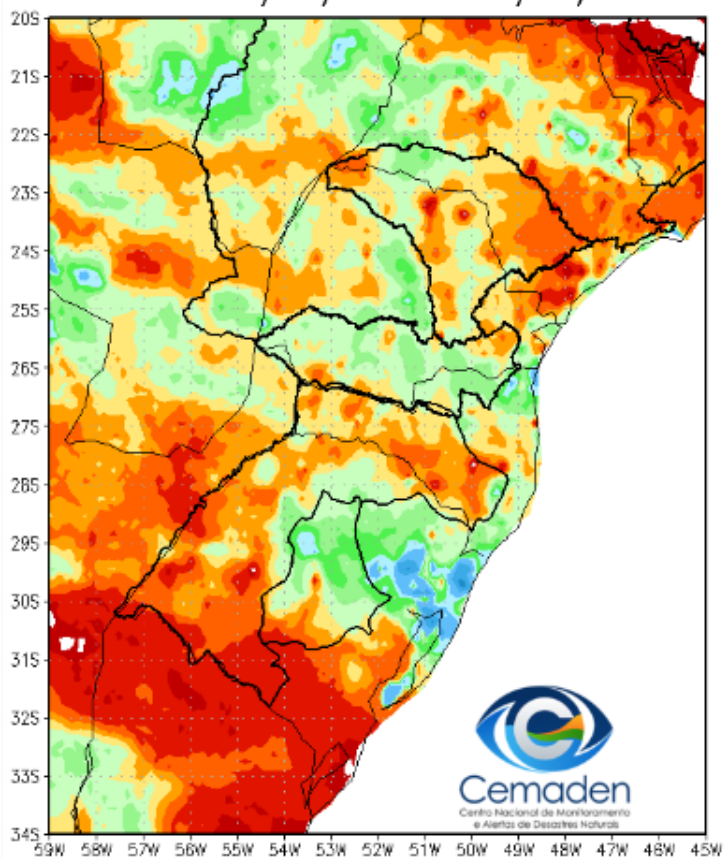


MINISTÉRIO DA
CIÊNCIA, TECNOLOGIA
E INOVAÇÃO

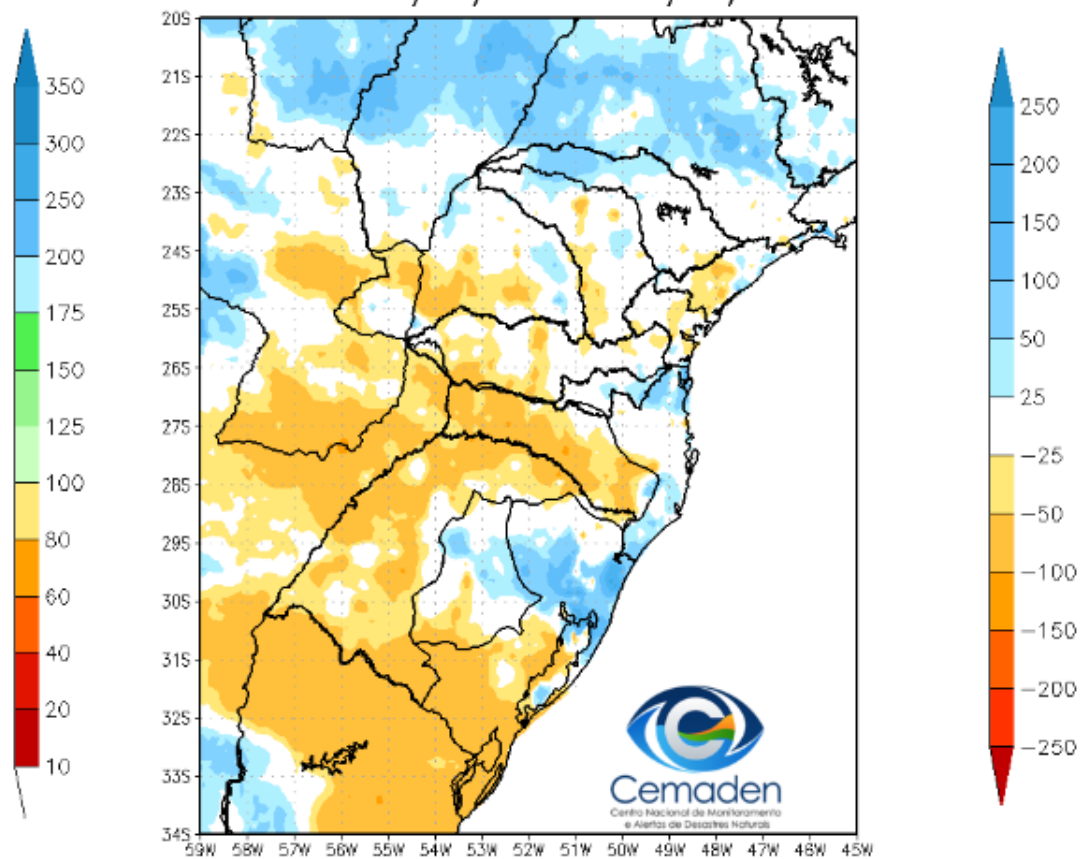


Precipitação nos últimos 30 dias

Precipitação Acumulada (mm) A.S.
Período: 21/05/2023 a 20/06/2023

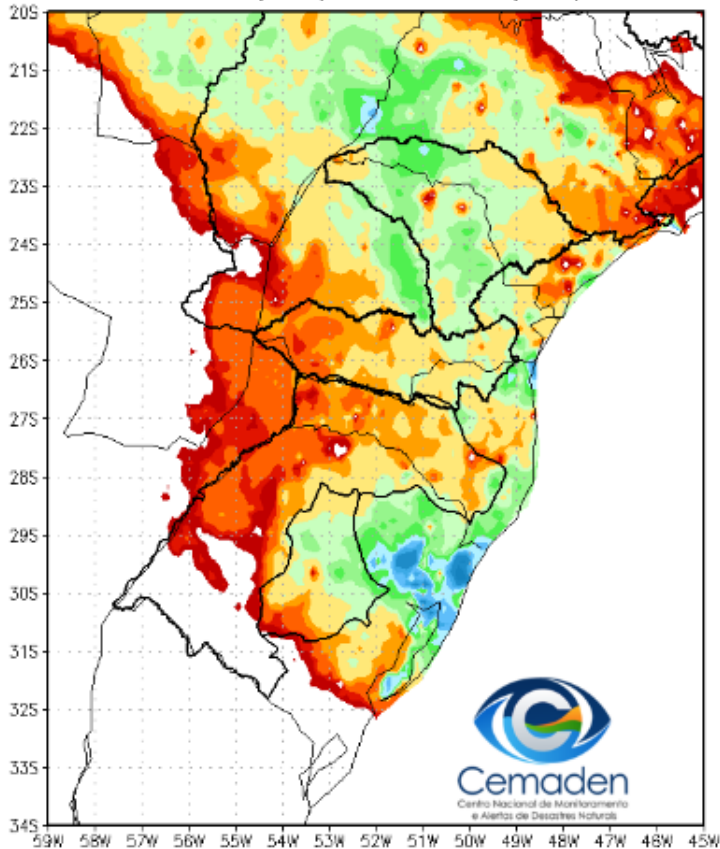


Anomalia de Precipitação (mm) A.S.
Período: 21/05/2023 a 20/06/2023

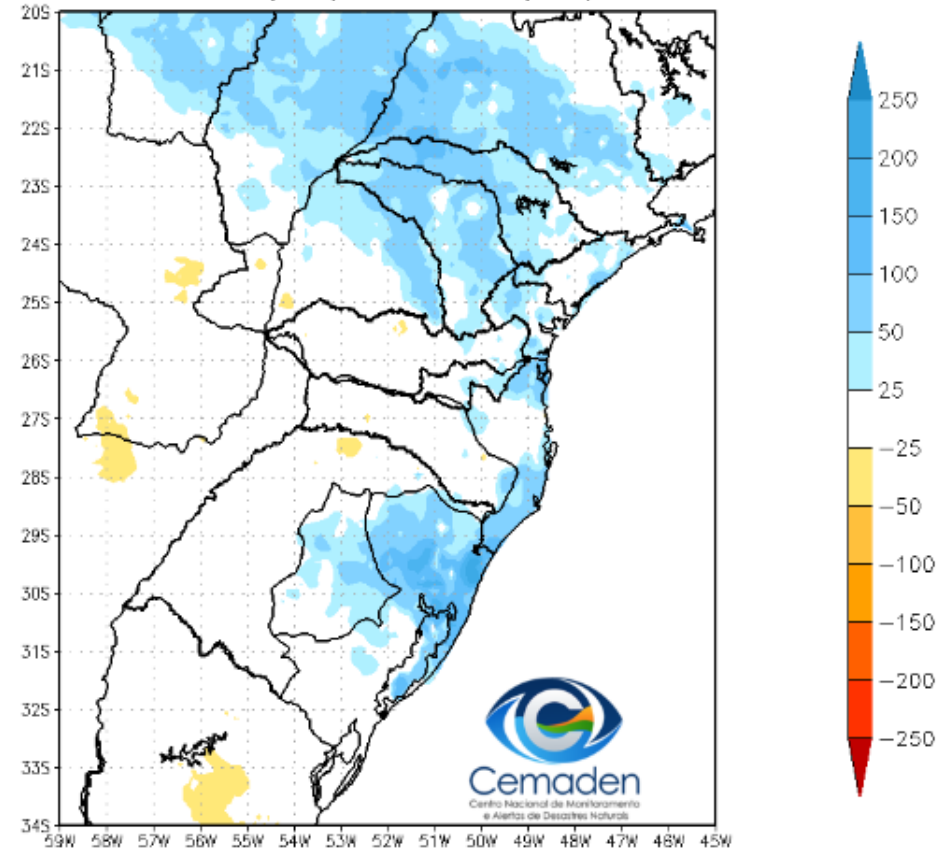


Precipitação nos últimos 7 dias

Precipitação Acumulada (mm) A.S.
Período: 13/06/2023 a 20/06/2023

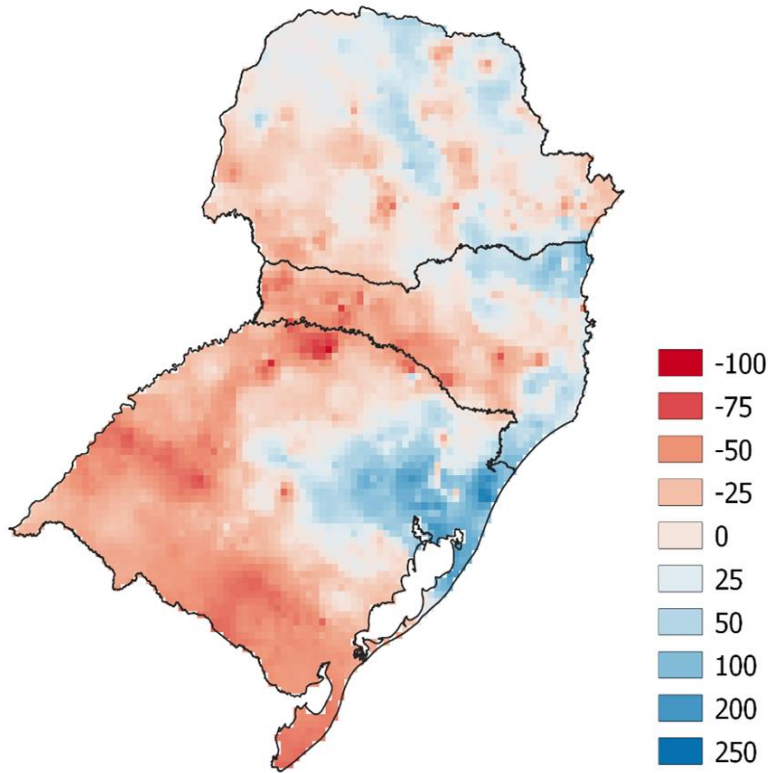


Anomalia de Precipitação (mm) A.S.
Período: 13/06/2023 a 20/06/2023

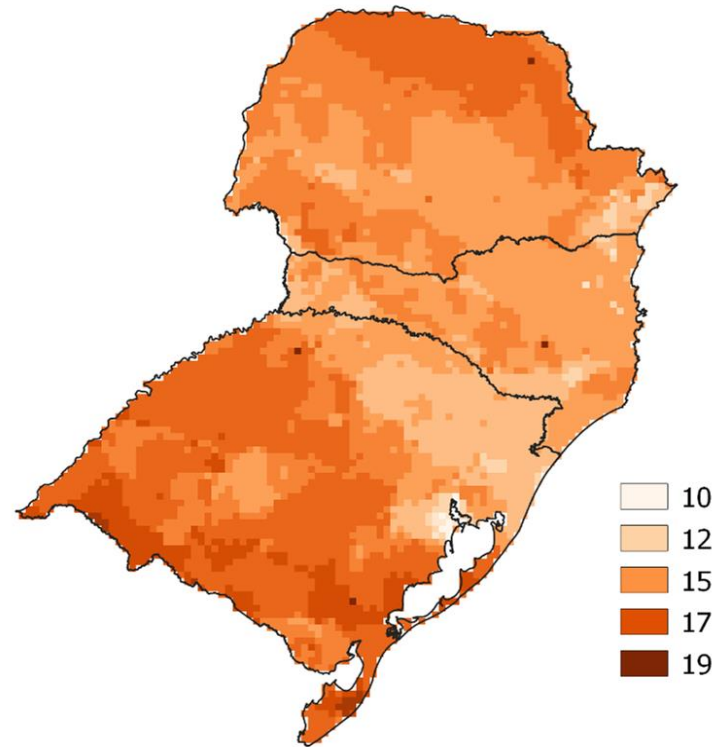


PRECIPITAÇÃO: JUNHO 2023 (ATÉ 19/06)

Anomalia (mm)

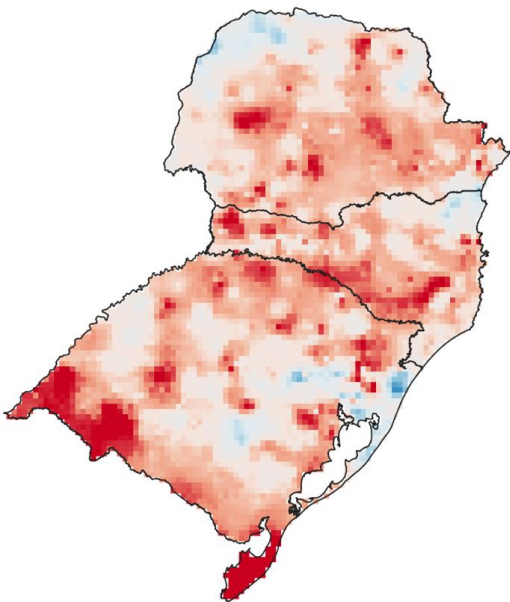


Total de dias sem chuva

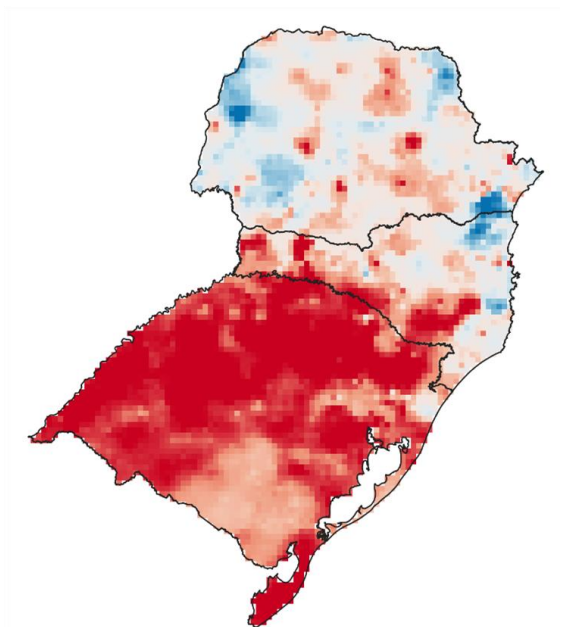


SPI: JUNHO 2023

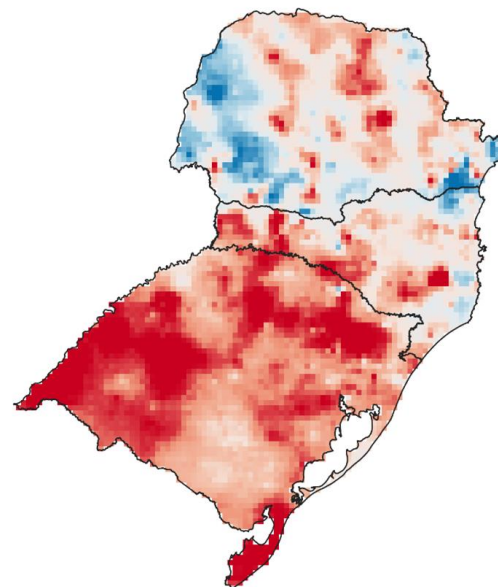
SPI03



SPI12



SPI24

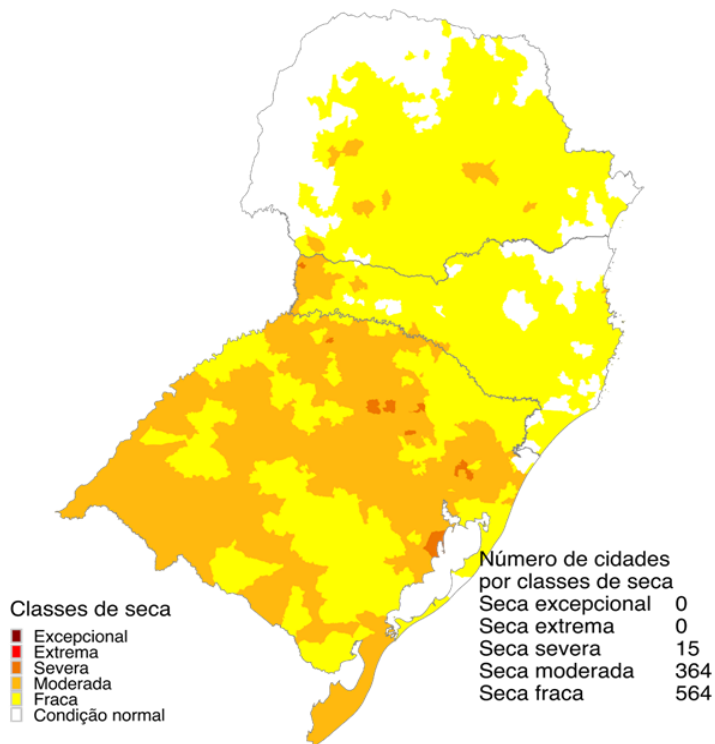


Fonte: Precipitação observada (MERGE).

ÍNDICE INTEGRADO DE SECA - IIS

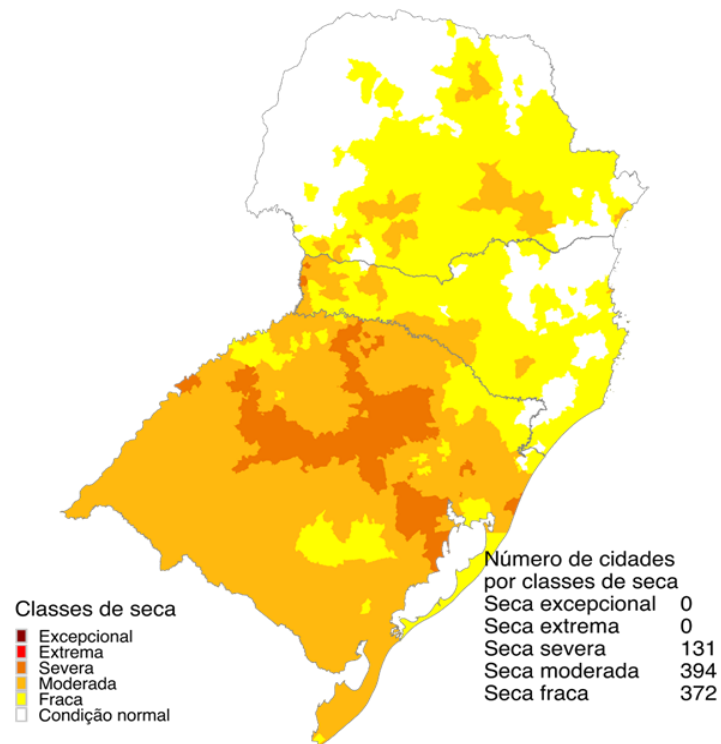
(SPI3 E 6 + VHI + AUS): JUNHO/2023

IIS 3 MESES



Junho 2023
Índice Integrado de Seca (SPI3, VHI, US)
Dados: CPTEC/INPE - NOAA - NASA / Preparação: Cemaden/MCTI

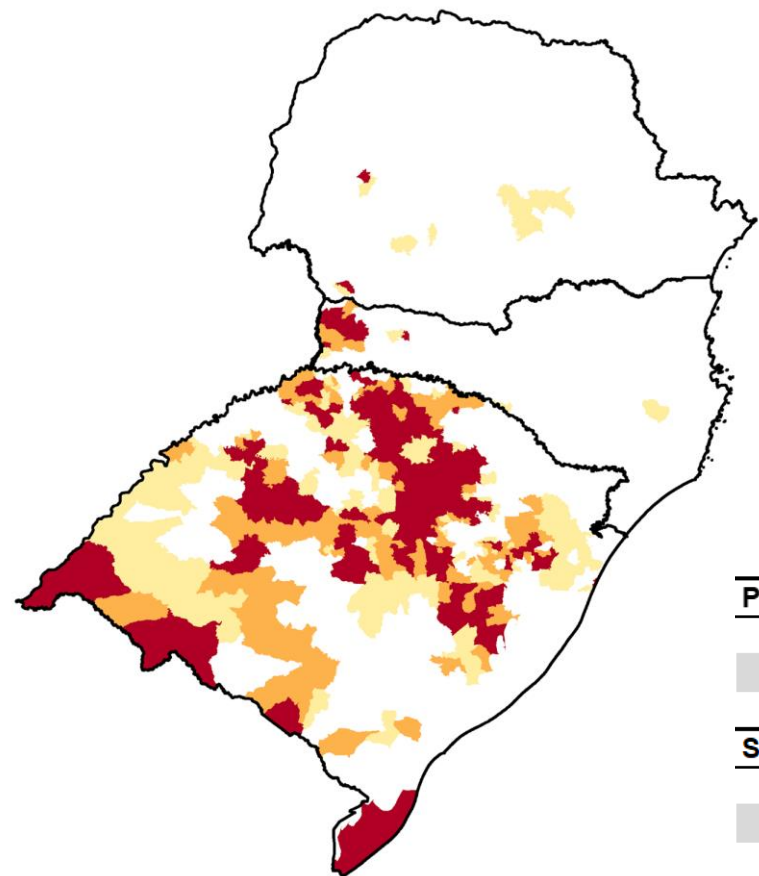
IIS 6 MESES



Junho 2023
Índice Integrado de Seca (SPI6, VHI, US)
Dados: CPTEC/INPE - NOAA - NASA / Preparação: Cemaden/MCTI

ÁREAS DE PASTAGENS E AGRÍCOLAS AFETADAS PELA SECA

JUN/23



UF	40 a 60%	60 - 80%	> 80%
PR	7		3
RS	5	7	15
SC	68	86	157

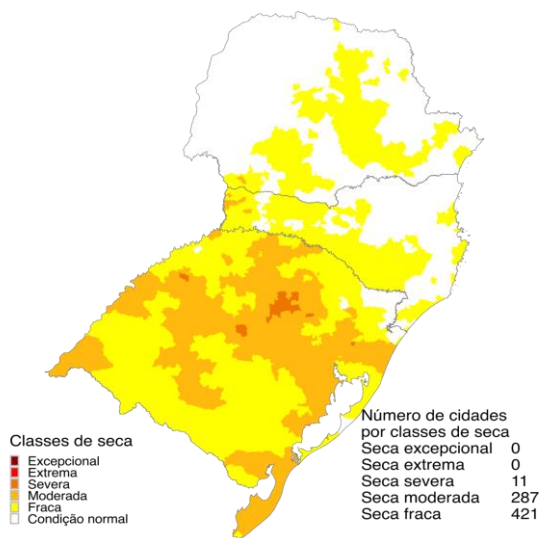
	40 a 60%	60 - 80%	> 80%	Imóveis Rurais Impactados > 40%
Paraná				
Minifundio	9838 (4%)	-	880 (6%)	10718 (4%)
Pequena Propriedade	4760 (4%)	-	428 (3%)	5188 (4%)
Media Propriedade	614 (2%)	-	56 (1%)	670 (2%)
Santa Catarina				
Minifundio	5019 (2%)	8773 (4%)	13760 (6%)	27552 (12%)
Pequena Propriedade	1523 (2%)	1645 (2%)	1645 (3%)	5469 (7%)
Media Propriedade	86 (1%)	89 (1%)	58 (*)	233 (2,3%)
Rio Grande do Sul				
Minifundio	46726 (13%)	64362 (17%)	101985 (28%)	213073 (58%)
Pequena Propriedade	5379 (14%)	3979 (16%)	5458 (27%)	79183 (57%)
Media Propriedade	5379 (22%)	3979 (16%)	5458 (22%)	14816 (60%)

(*) Percentagem inferior a 1%.

CENÁRIOS ÍNDICE INTEGRADO DE SECA - IIS: JULHO/2023

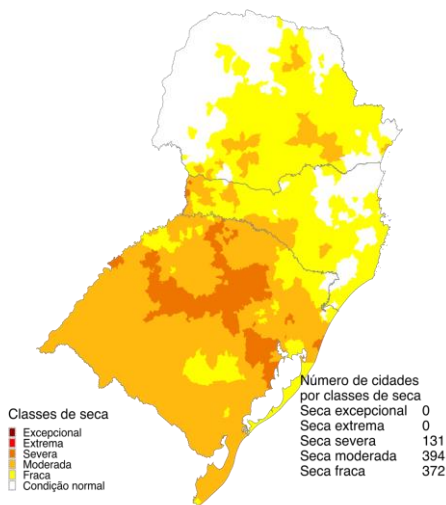
CHUVA 40% ACIMA DA MÉDIA

CHUVA 40% ABAIXO DA MÉDIA

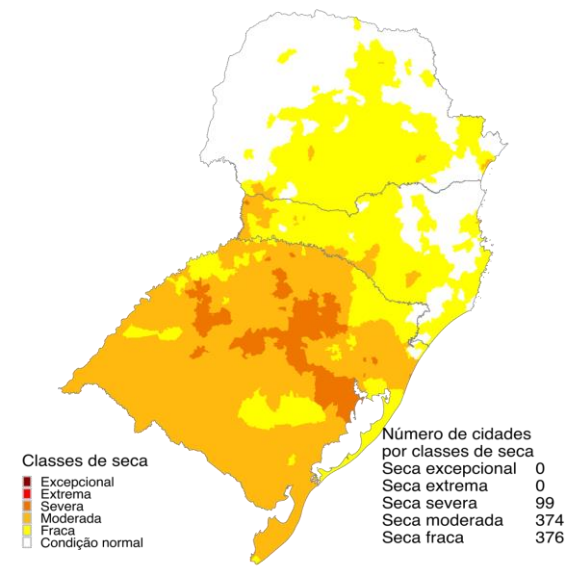


Julho 2023
Índice Integrado de Seca (SPI6, VHI, US)
Cenário: Chuva + 40%
Dados: CPTEC/INPE - NOAA - NASA / Preparação: Cemaden/MCTI

Junho/23

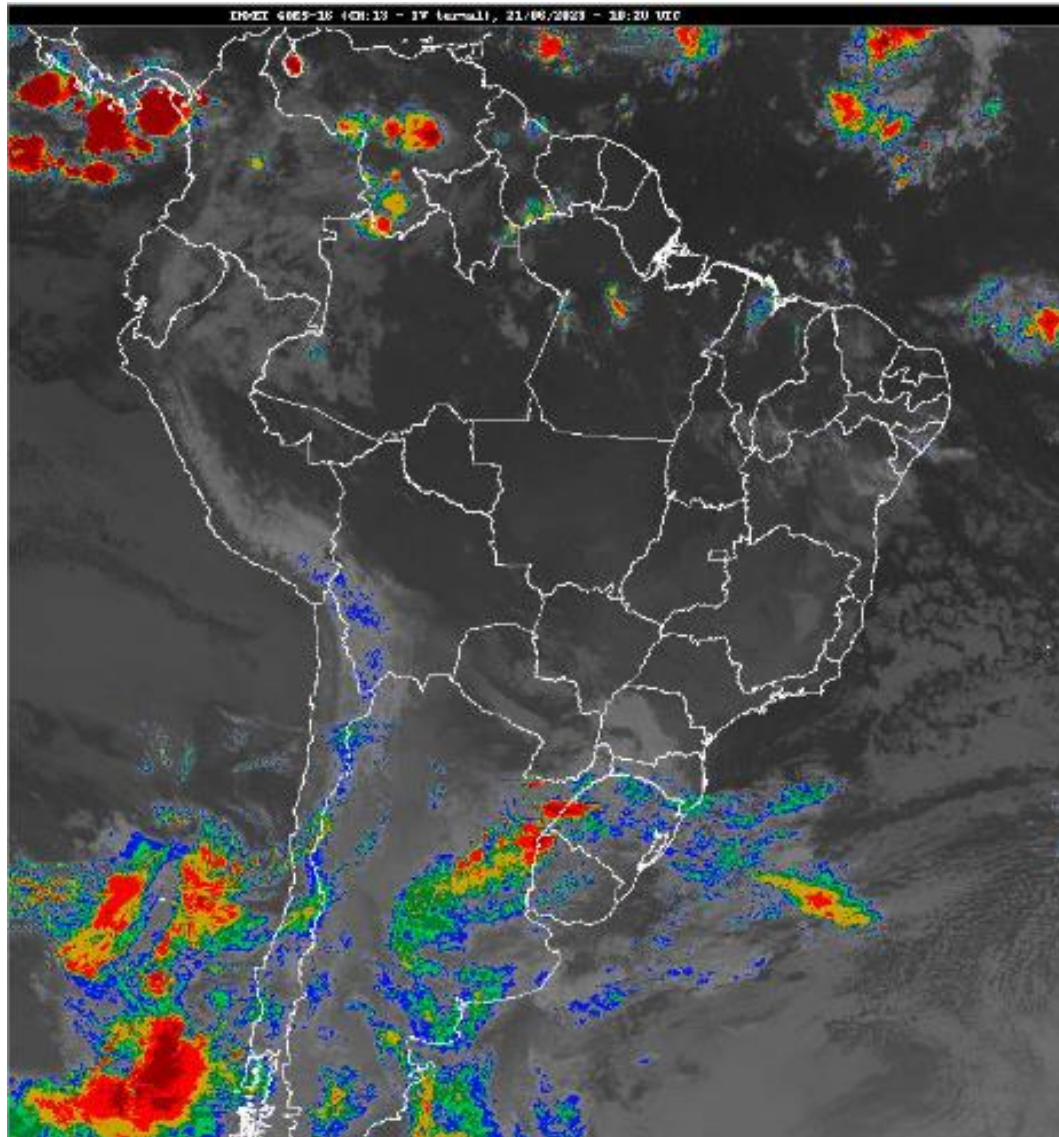


Junho 2023
Índice Integrado de Seca (SPI6, VHI, US)
Dados: CPTEC/INPE - NOAA - NASA / Preparação: Cemaden/MCTI



Julho 2023
Índice Integrado de Seca (SPI6, VHI, AUS)
Cenário: Chuva - 40%
Dados: CPTEC/INPE - NOAA - NASA / Preparação: Cemaden/MCTI

Situação meteorológica atual

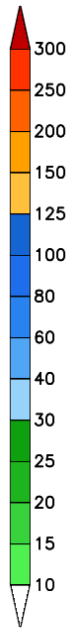
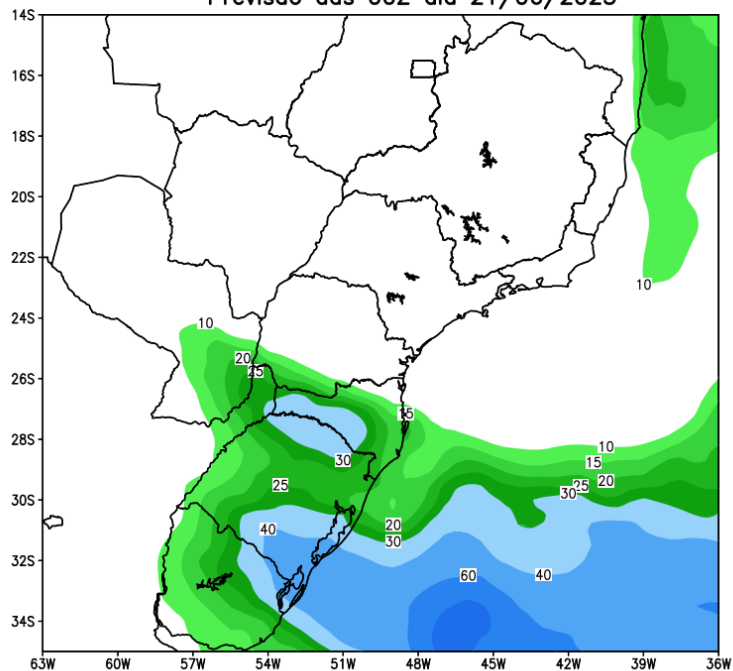


Fonte: INMET

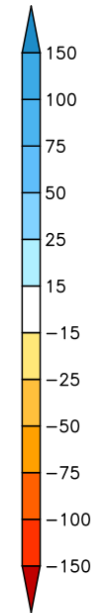
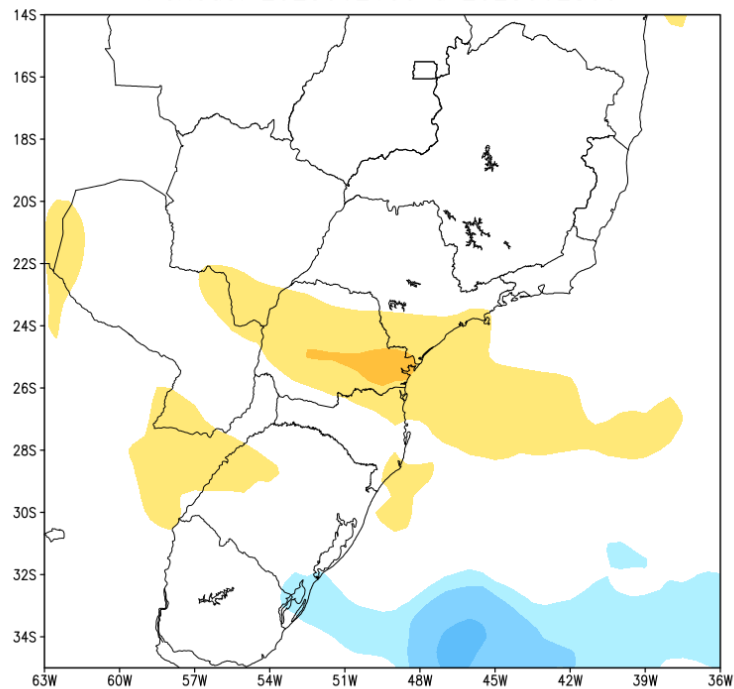


Previsão de chuva próximos 7 dias

GEFS / BRASIL_SUL
Precipitacao acumulada 1aSem (mm)
Previsao das 00Z dia 21/06/2023



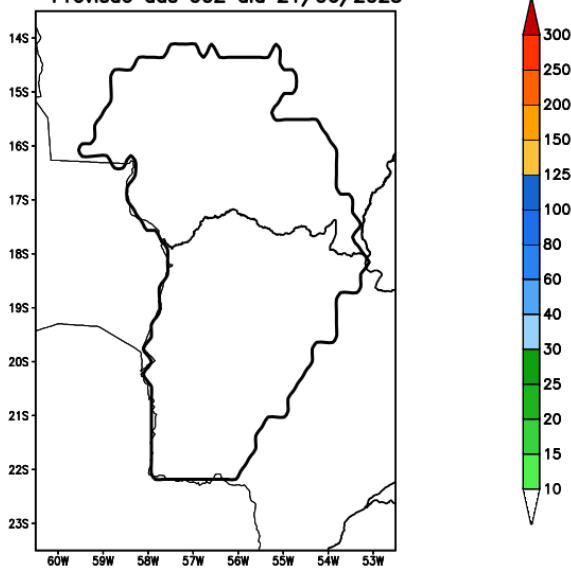
Anomalia de Precipitacao BR_SUL (mm)
Periodo: 2023062100 a 2023062800



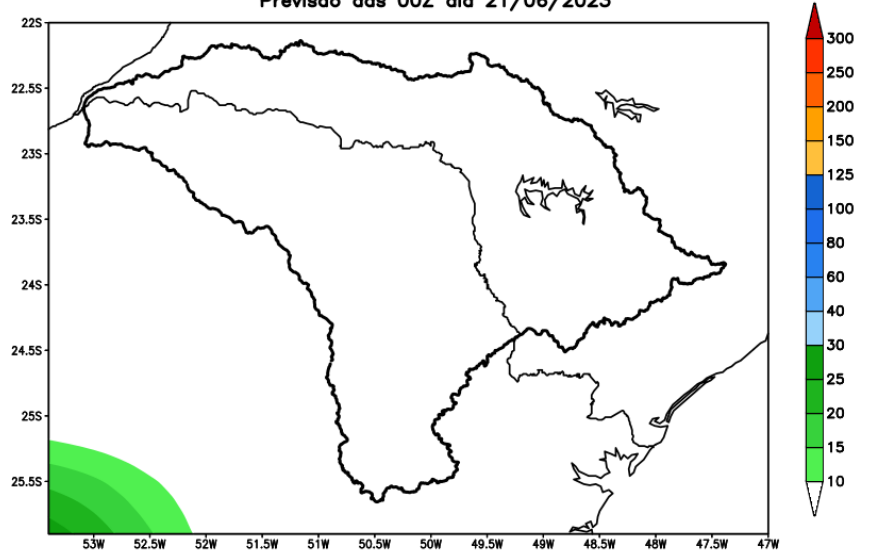
MODELO GFS

Previsão para as principais bacias

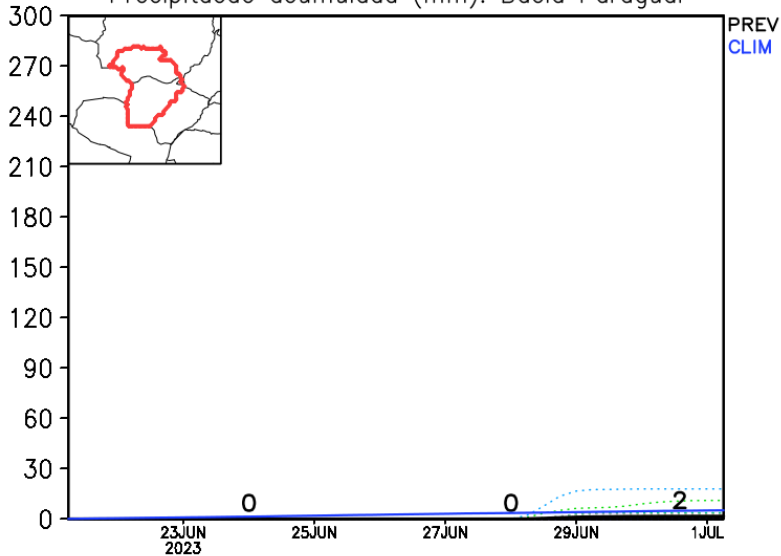
GEFS / Bacia do Rio Paraguai
Precipitação acumulada em 7 dias (mm)
Previsão das 00Z dia 21/06/2023



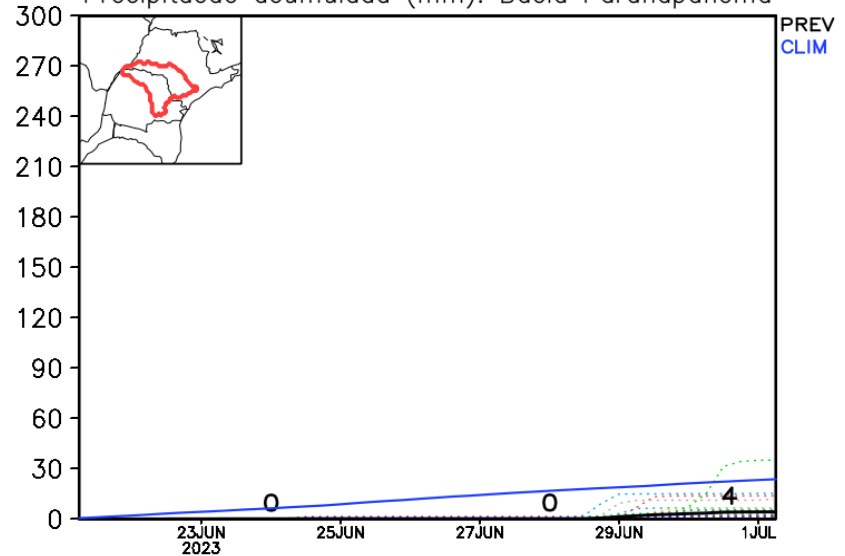
GEFS_BC / Bacia do Rio Paranapanema
Prec. acumulada com correcao de vies em 7 dias (mm)
Previsão das 00Z dia 21/06/2023



Precipitação acumulada (mm): Bacia Paraguai



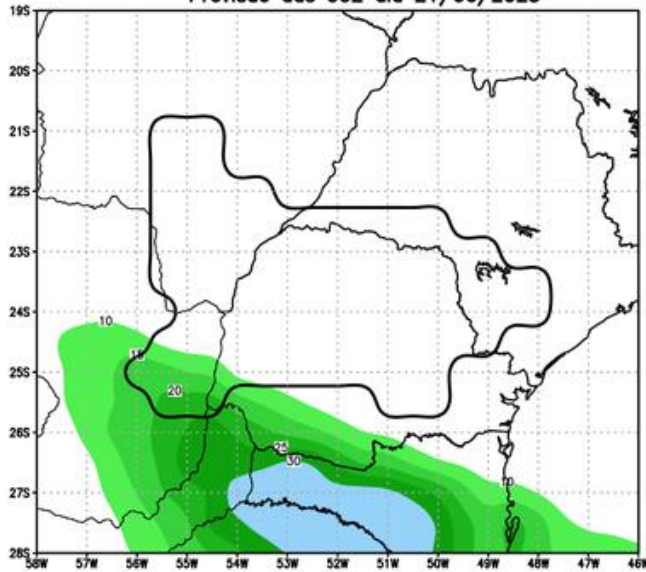
Precipitação acumulada (mm): Bacia Paranapanema



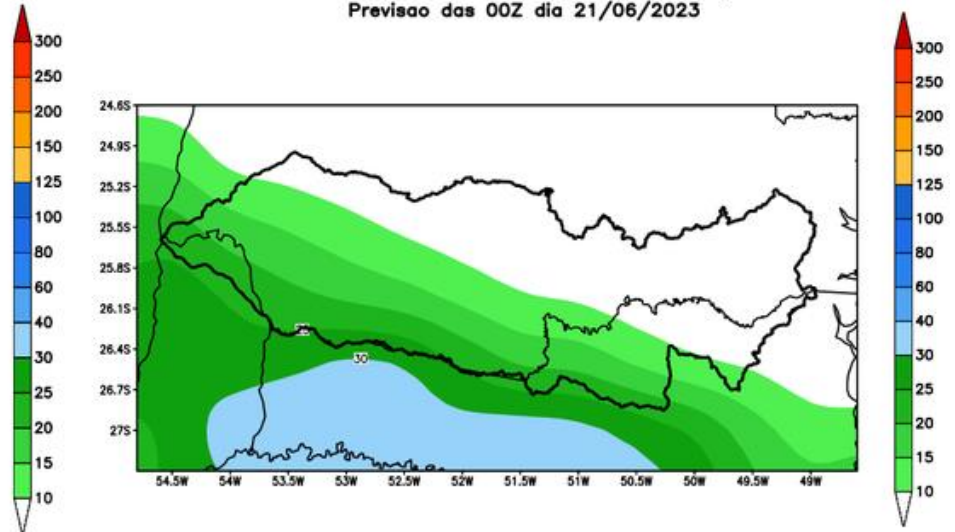
MODELO GFS

Previsão para as principais bacias

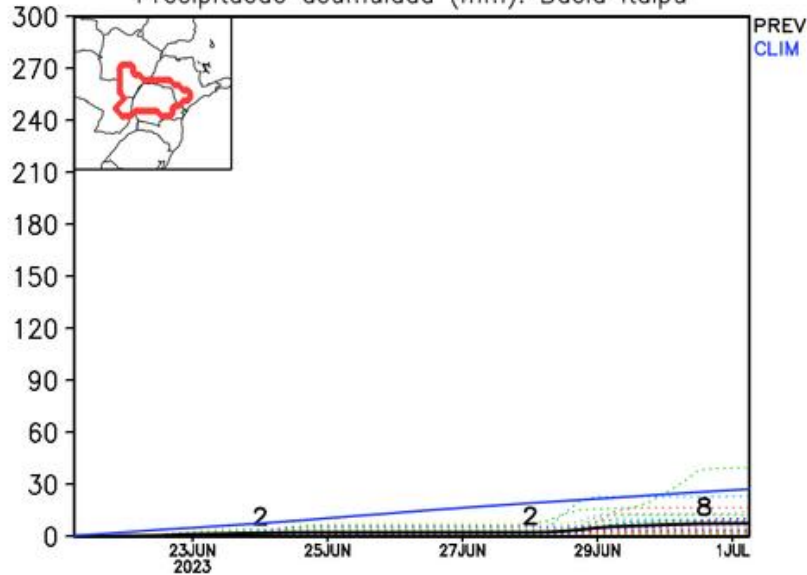
GEFS / Itaipu
Precipitacao acumulada em 7 dias (mm)
Previsao das 00Z dia 21/06/2023



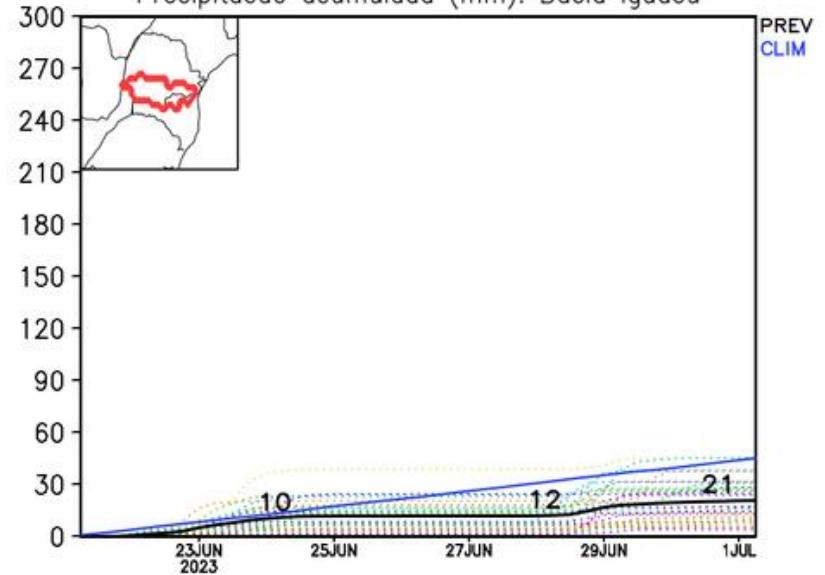
GEFS / Bacia do Rio Iguacu
Precipitacao acumulada em 7 dias (mm)
Previsao das 00Z dia 21/06/2023



Precipitacao acumulada (mm): Bacia Itaipu

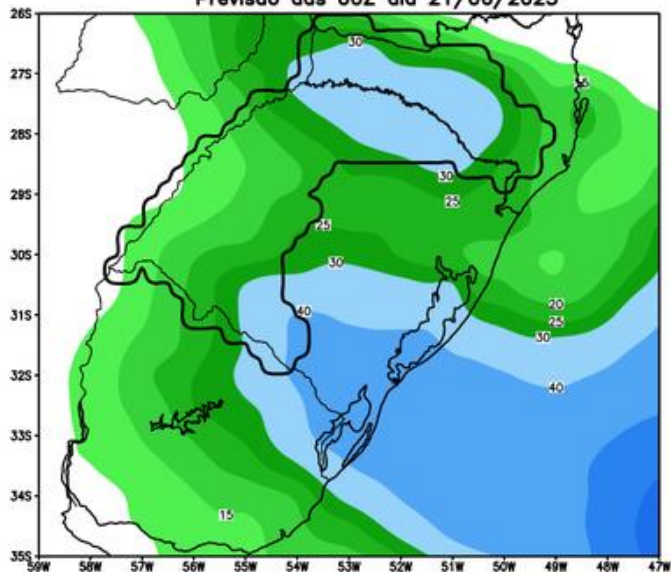


Precipitacao acumulada (mm): Bacia Iguacu

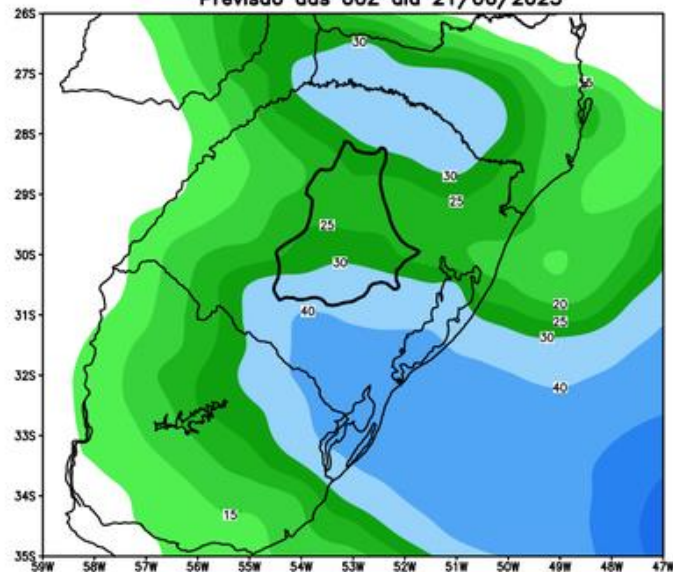


Previsão para as principais bacias

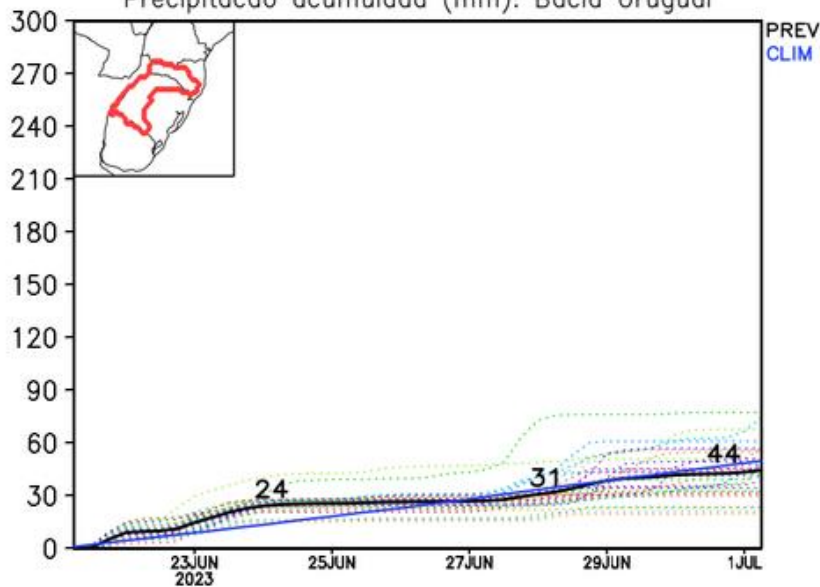
GEFS / Bacia do Rio Uruguai
Precipitação acumulada em 7 dias (mm)
Previsão das 00Z dia 21/06/2023



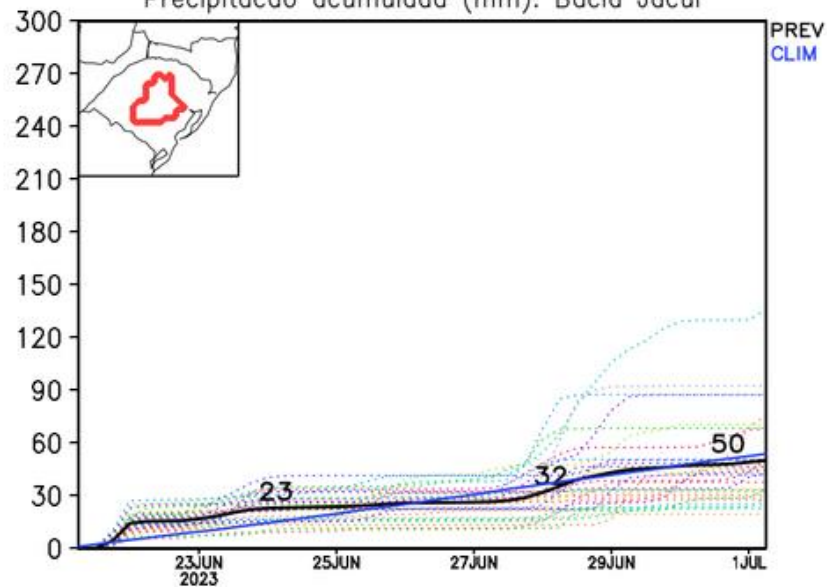
GEFS / Bacia do Rio Jacuí
Precipitação acumulada em 7 dias (mm)
Previsão das 00Z dia 21/06/2023



Precipitação acumulada (mm): Bacia Uruguai

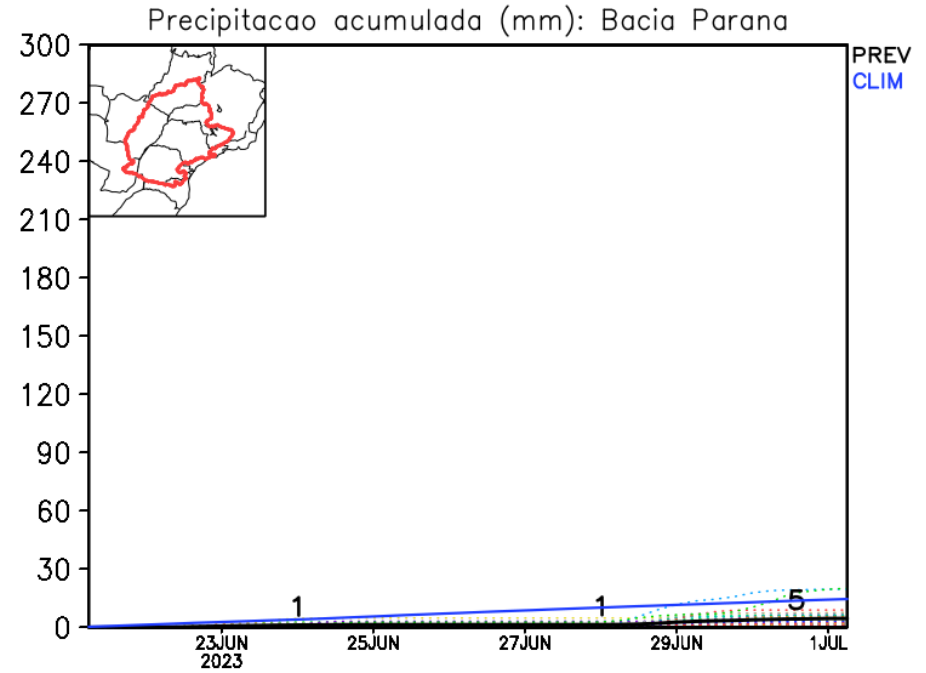
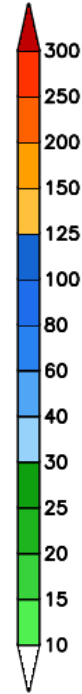
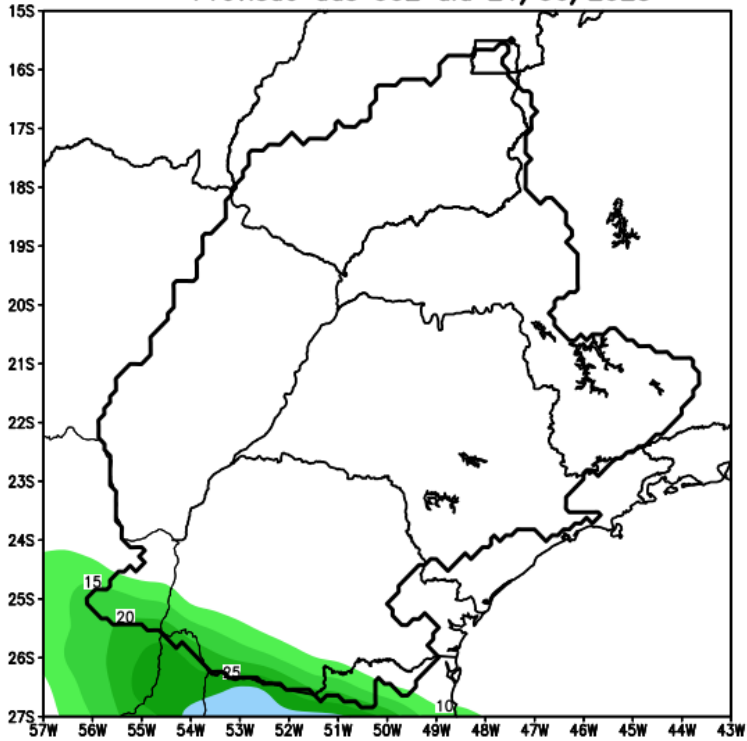


Precipitação acumulada (mm): Bacia Jacuí



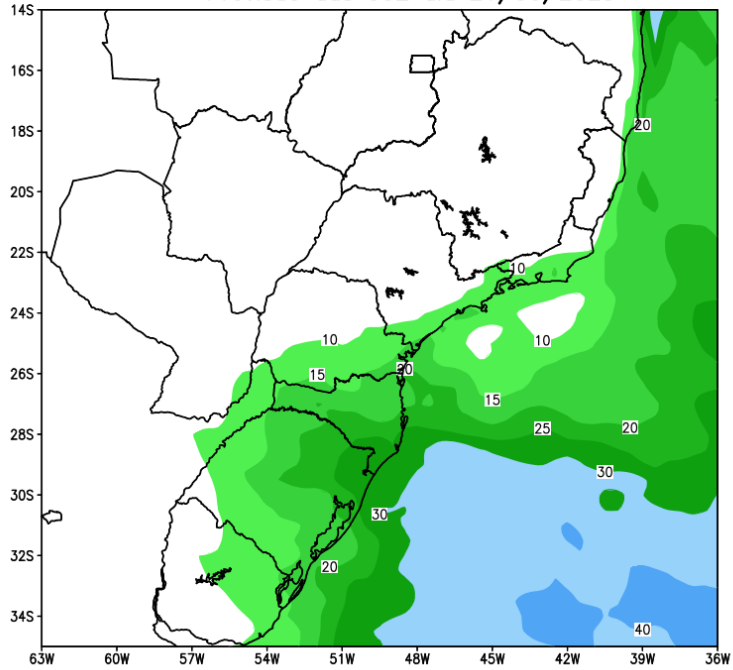
Previsão para as principais bacias

GEFS / Bacia do Parana
Precipitacao acumulada em 7 dias (mm)
Previsao das 00Z dia 21/06/2023

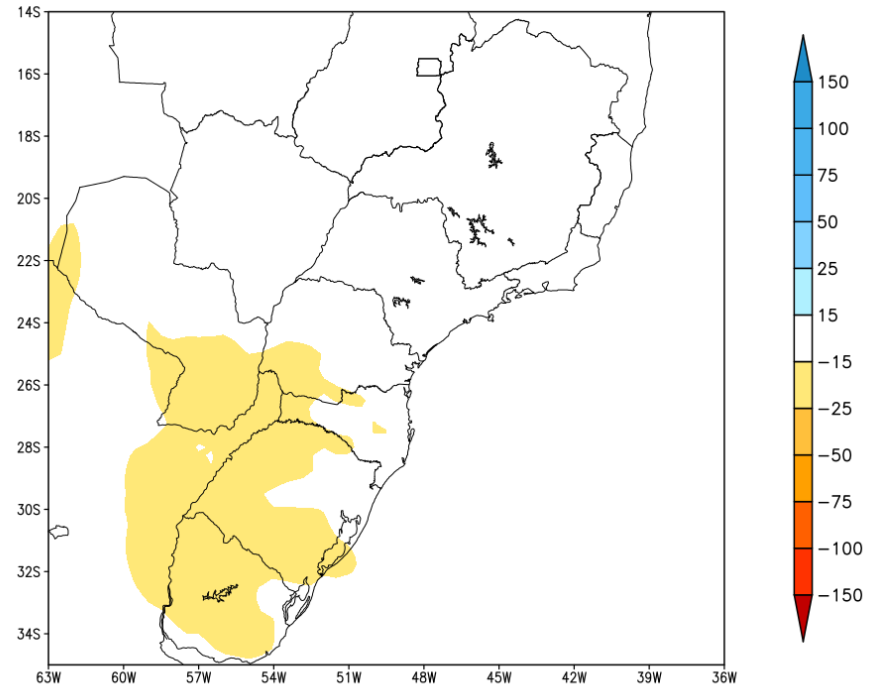


Tendência para a segunda semana

GEFS / BRASIL_SUL
Precipitacao acumulada 2aSem (mm)
Previsao das 00Z dia 21/06/2023



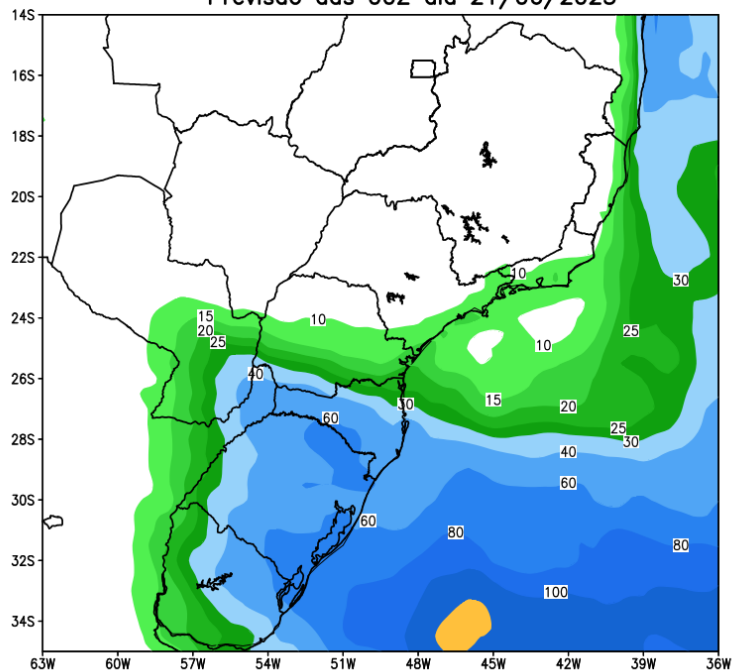
Anomalia de Precipitacao BR_SUL (mm)
Periodo: 2023062900 a 2023070500



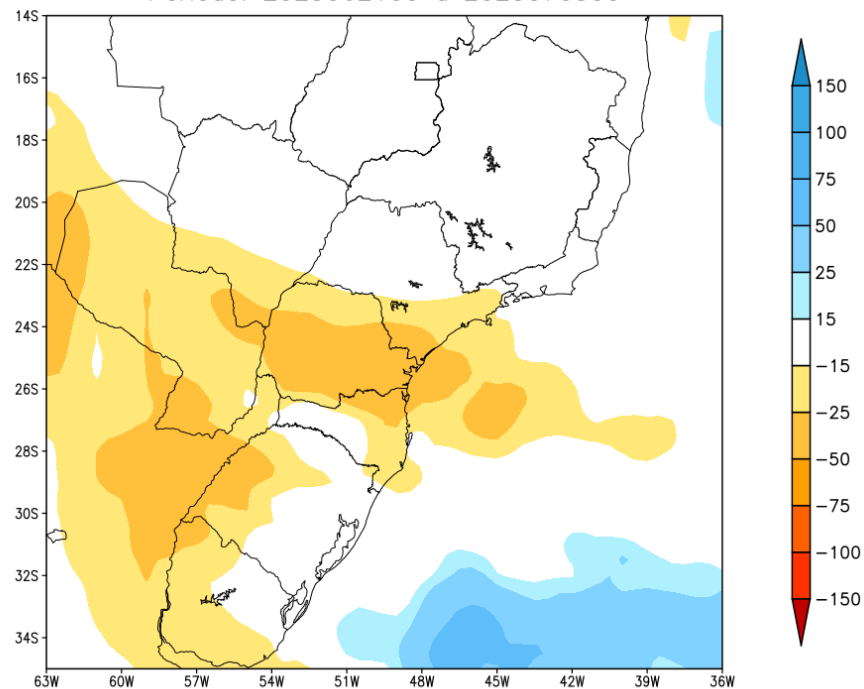
MODELO GFS

Tendência para as duas próximas semanas

GEFS / BRASIL_SUL
Precipitação acumulada 14 dias (mm)
Previsão das 00Z dia 21/06/2023



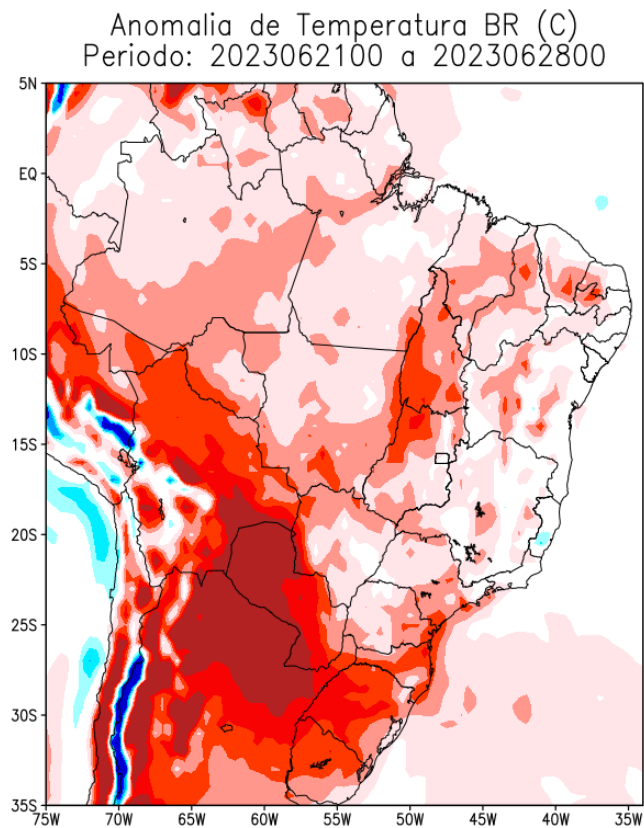
Anomalia de Precipitação BR_SUL (mm)
Período: 2023062100 a 2023070500



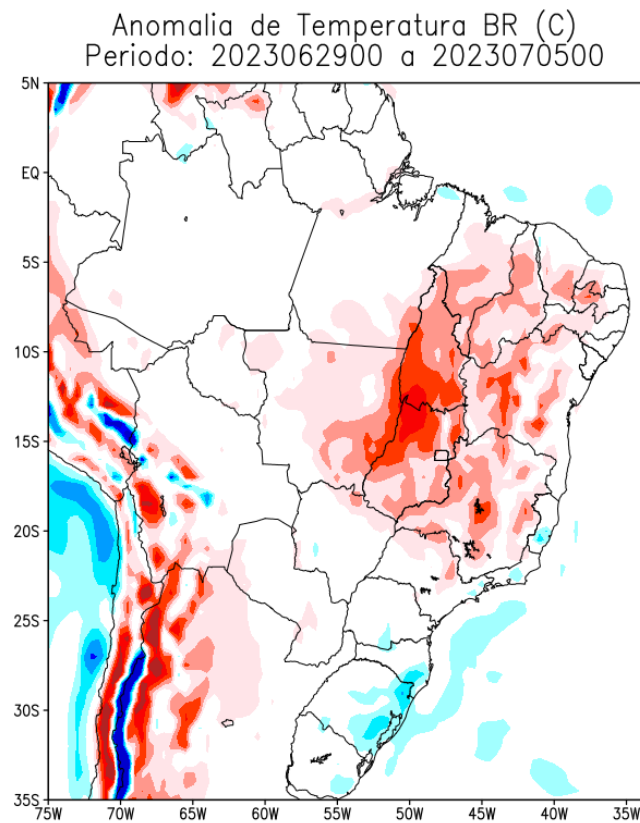
MODELO GFS

Previsão de Temperatura

1ª Semana



2ª Semana

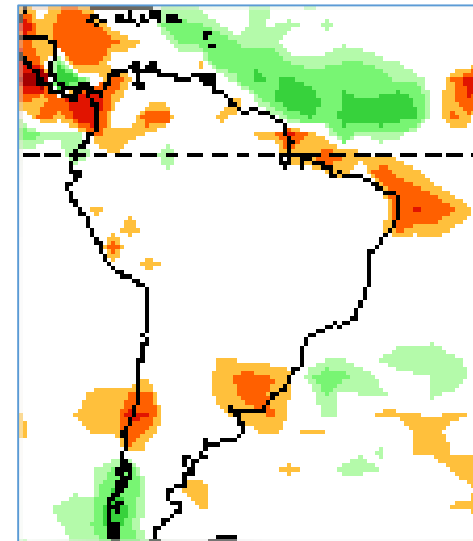
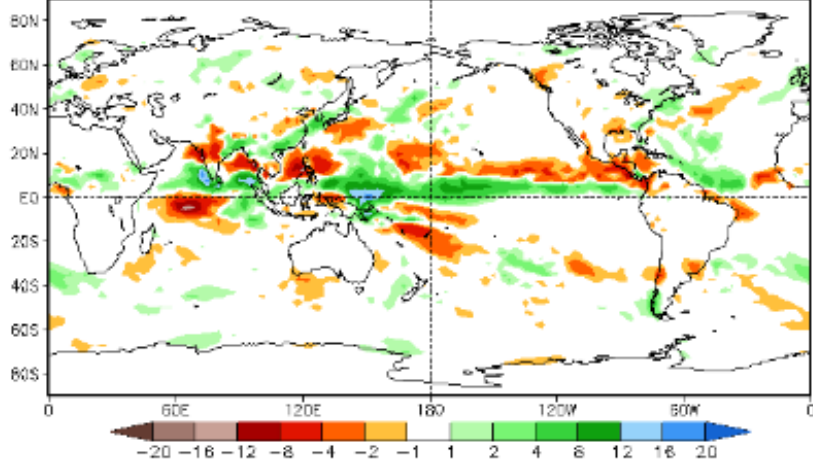


Tendência 3a e 4a semanas

16 Member Ensemble Mean Forecast from 19Jun2023

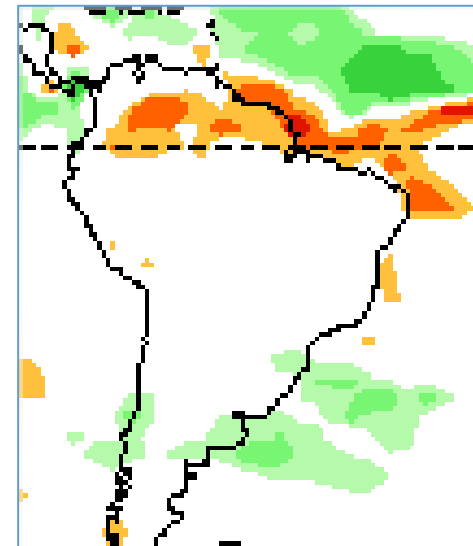
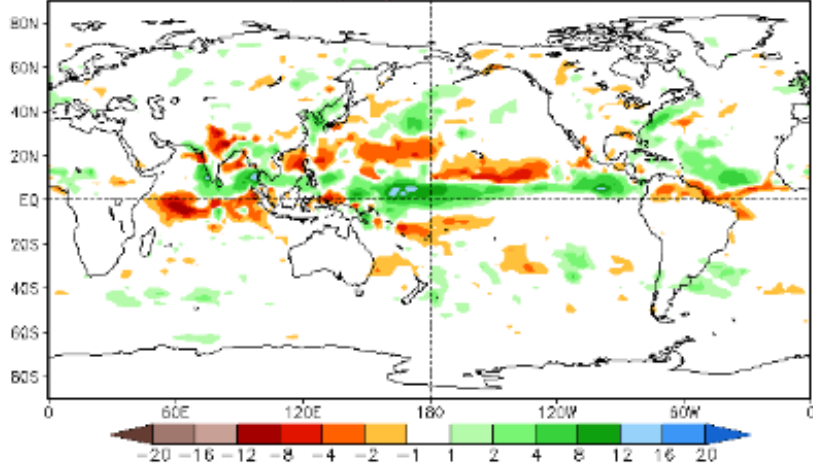
Week 3 Anomalies (mm/day)

4Jul2023-10Jul2023



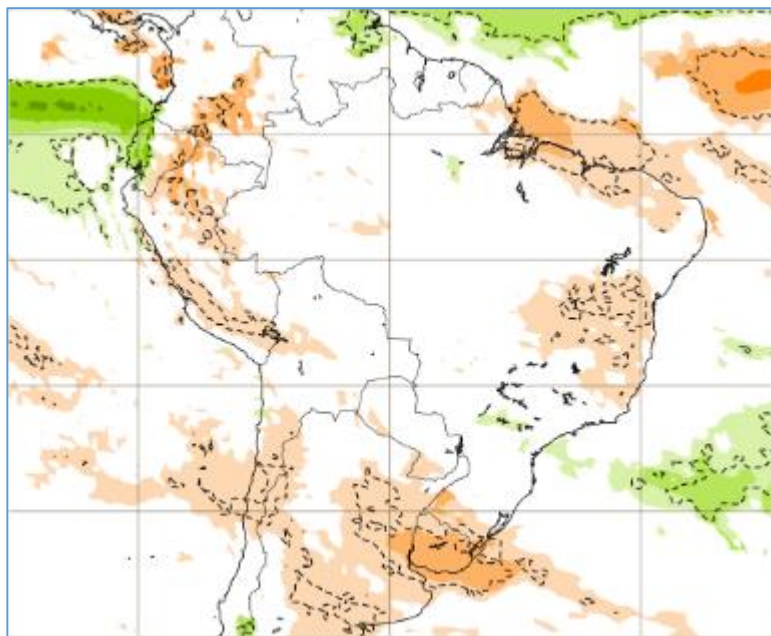
Week 4 Anomalies (mm/day)

11Jul2023-17Jul2023

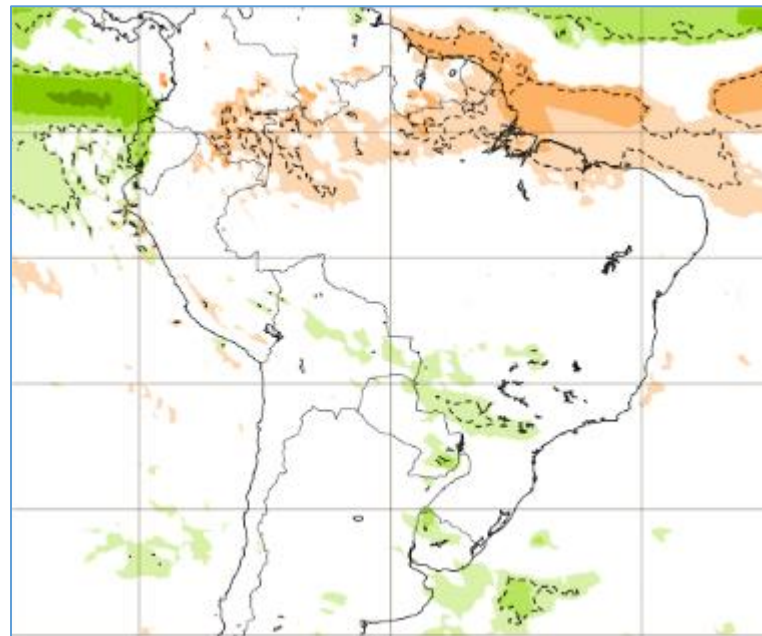


Tendência para 3ª e 4ª semanas

03-10/07



10-17/07





Update prepared by:
Climate Prediction Center / NCEP
20 June 2023

ENSO Alert System Status: **El Niño Advisory**

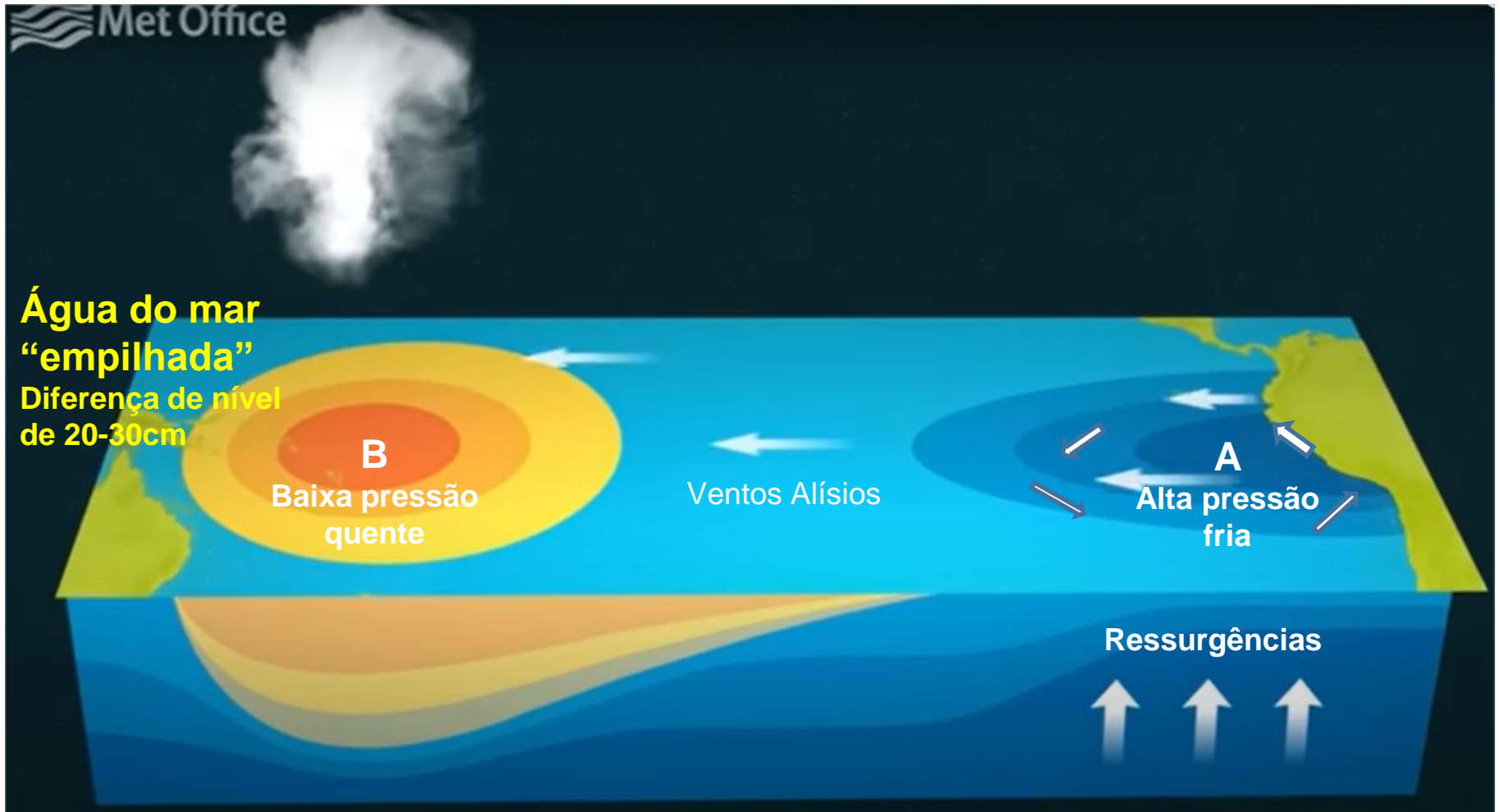
El Niño conditions are observed.*

Equatorial sea surface temperatures (SSTs) are above average across the east-central and eastern Pacific Ocean.

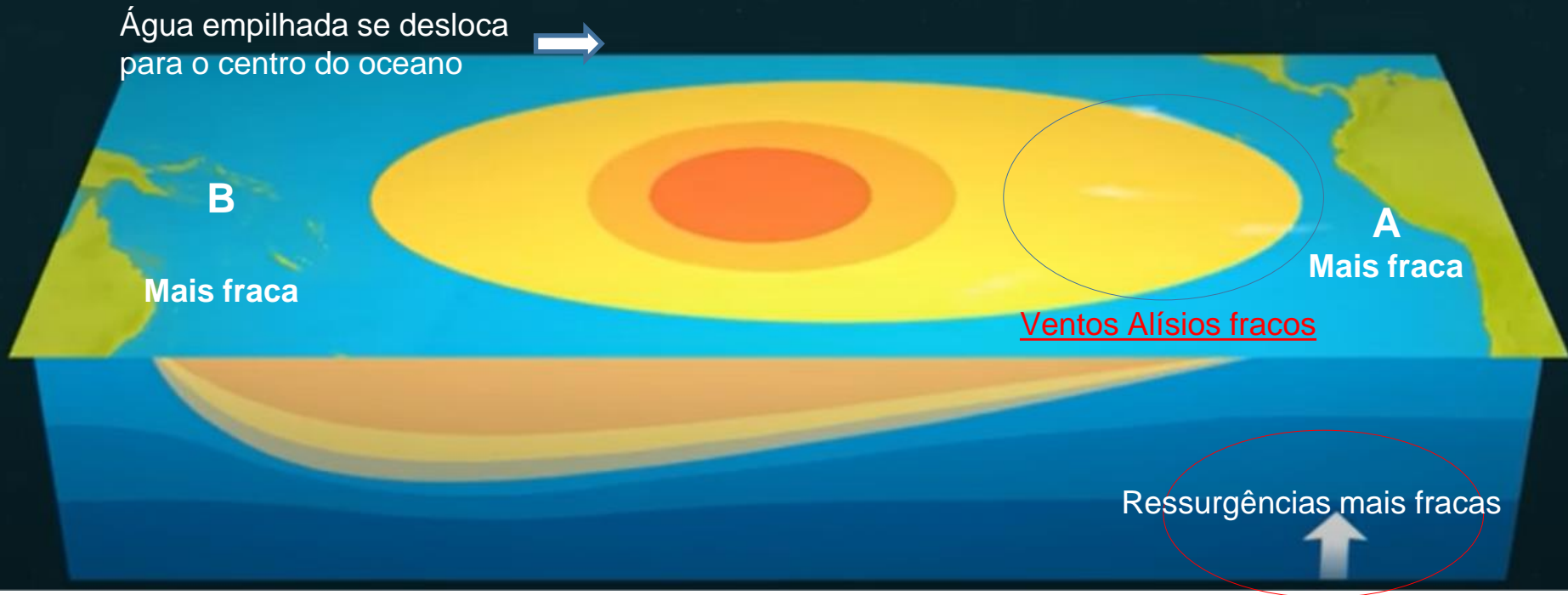
The tropical Pacific atmospheric anomalies are consistent with weak El Niño conditions.

El Niño conditions are expected to gradually strengthen into the Northern Hemisphere winter 2023-24.*

Situação de “normalidade”

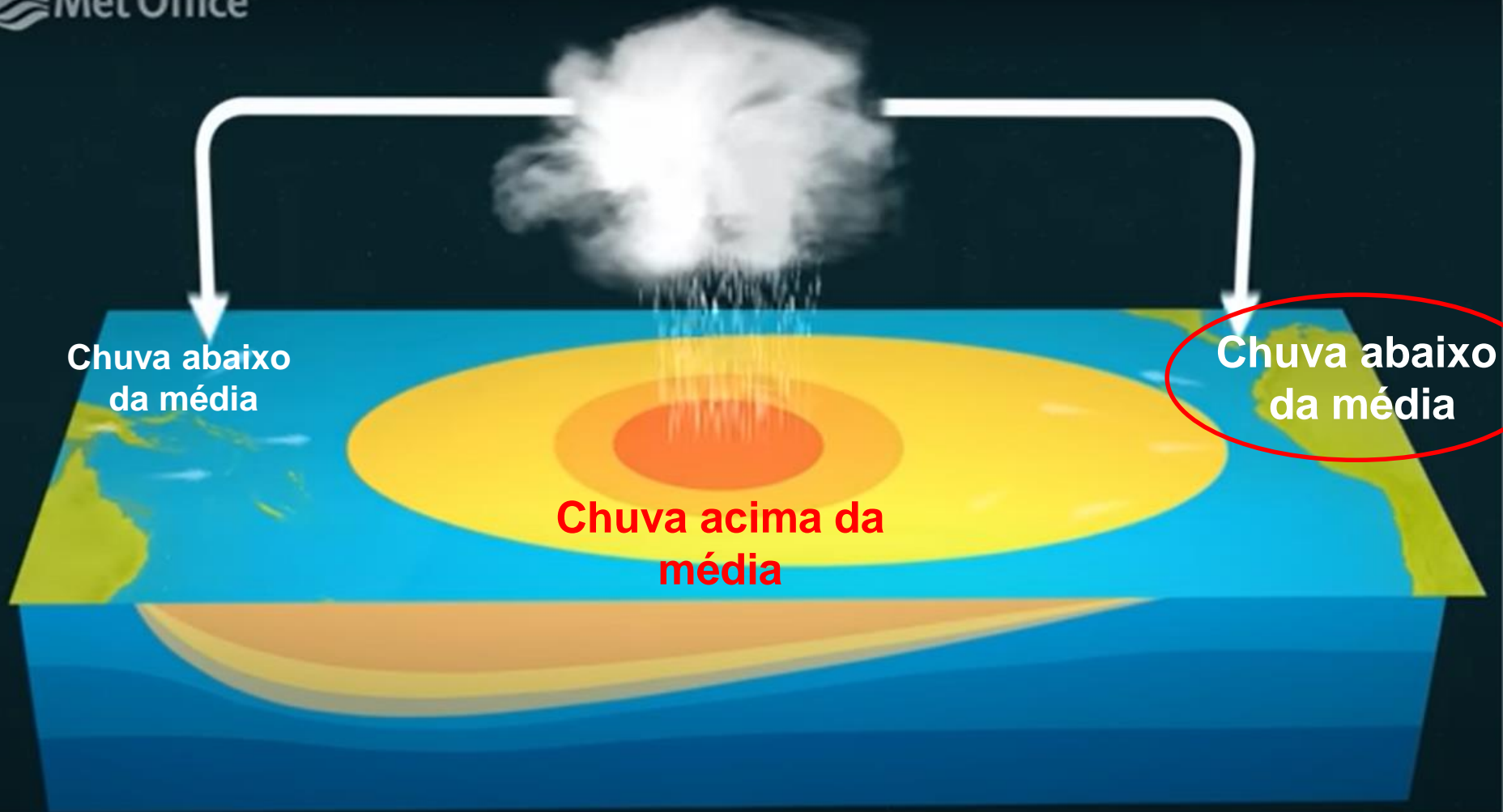


Situação de “El Niño”

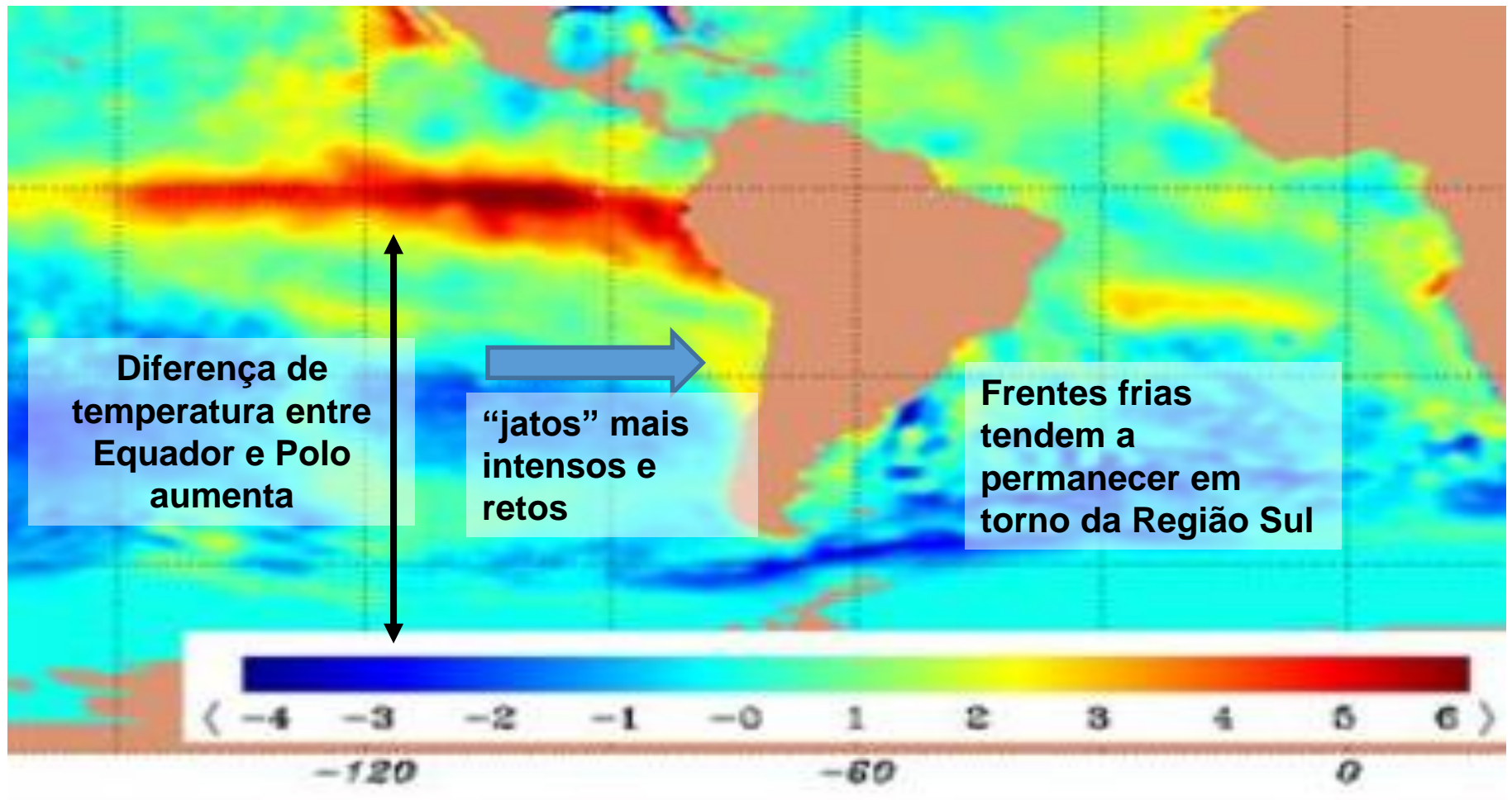


Situação de “El Niño” (Impactos)

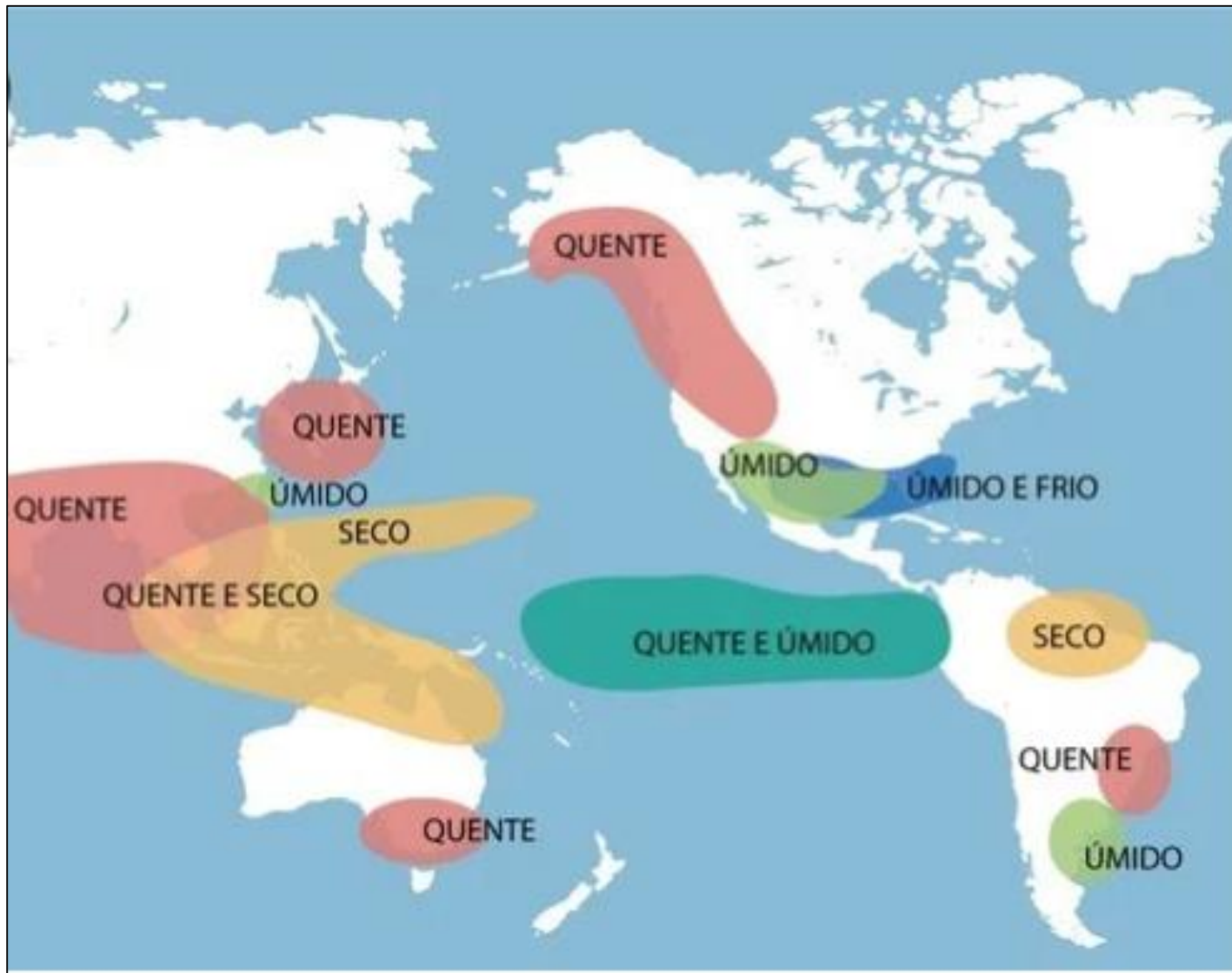
Met Office



Situação de “El Niño” (Impactos)

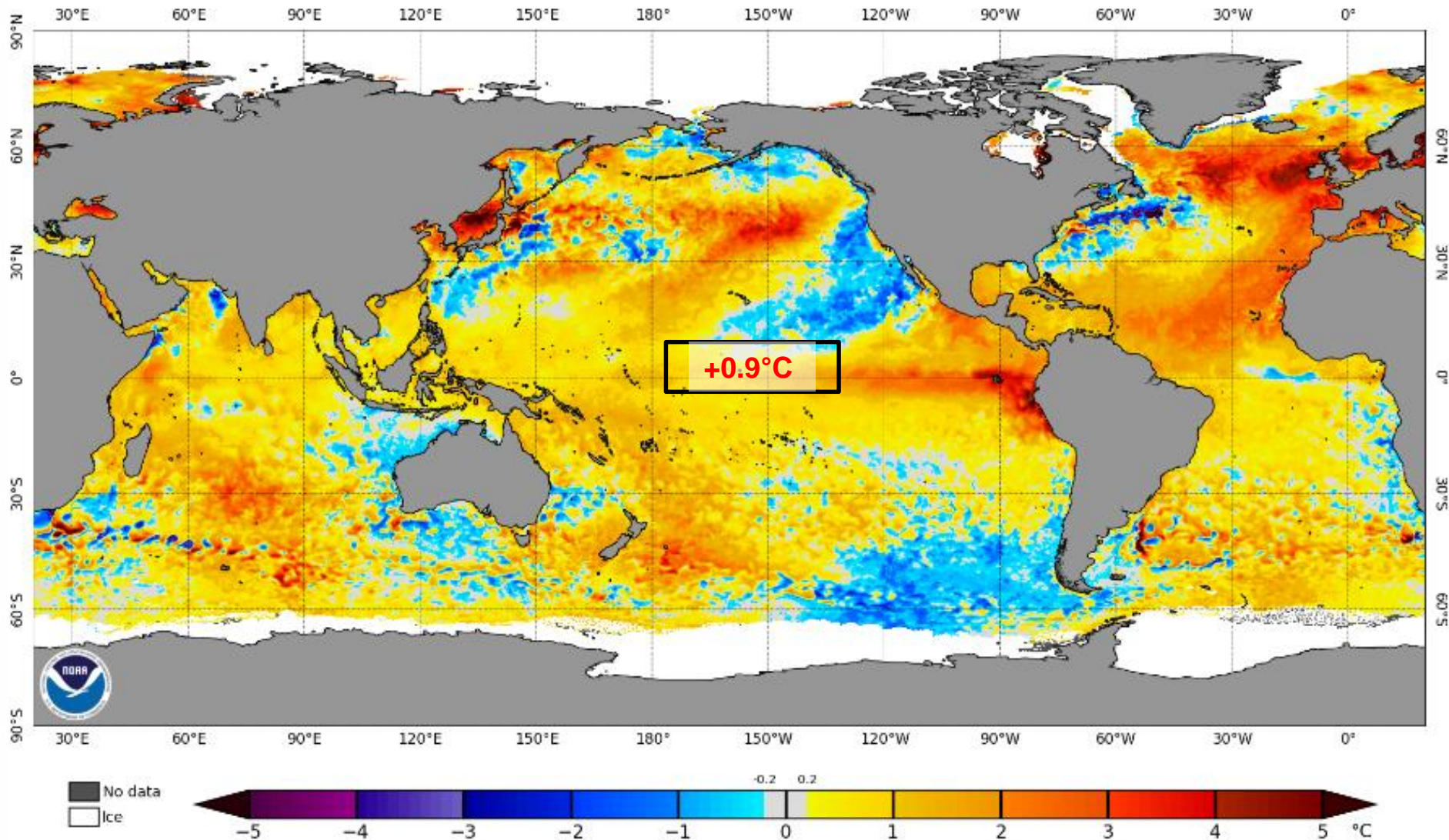


Situação de “El Niño” (Impactos)



Status Atual: El Niño

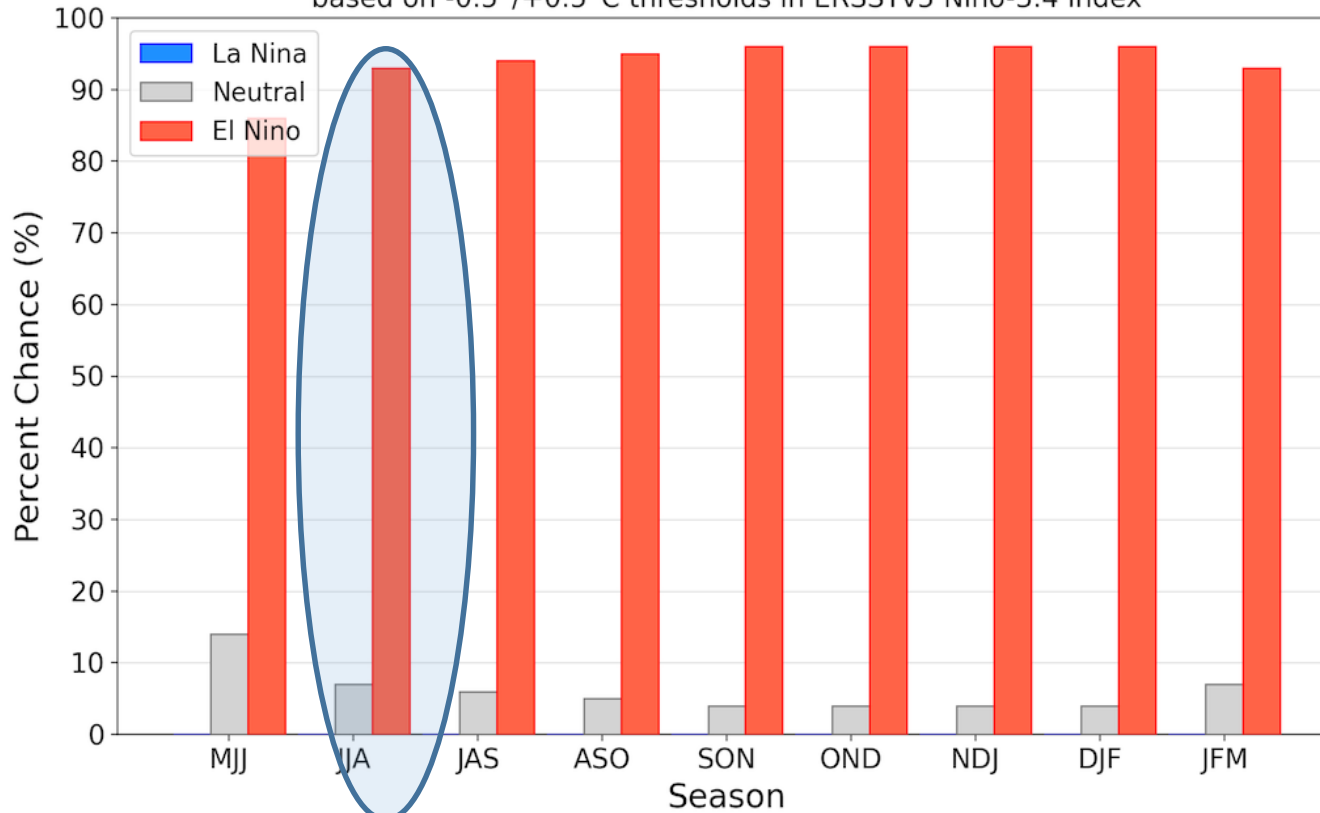
NOAA Coral Reef Watch Daily 5km SST Anomalies (v3.1) 19 Jun 2023



Previsão do “ENSO”

Official NOAA CPC ENSO Probabilities (issued June 2023)

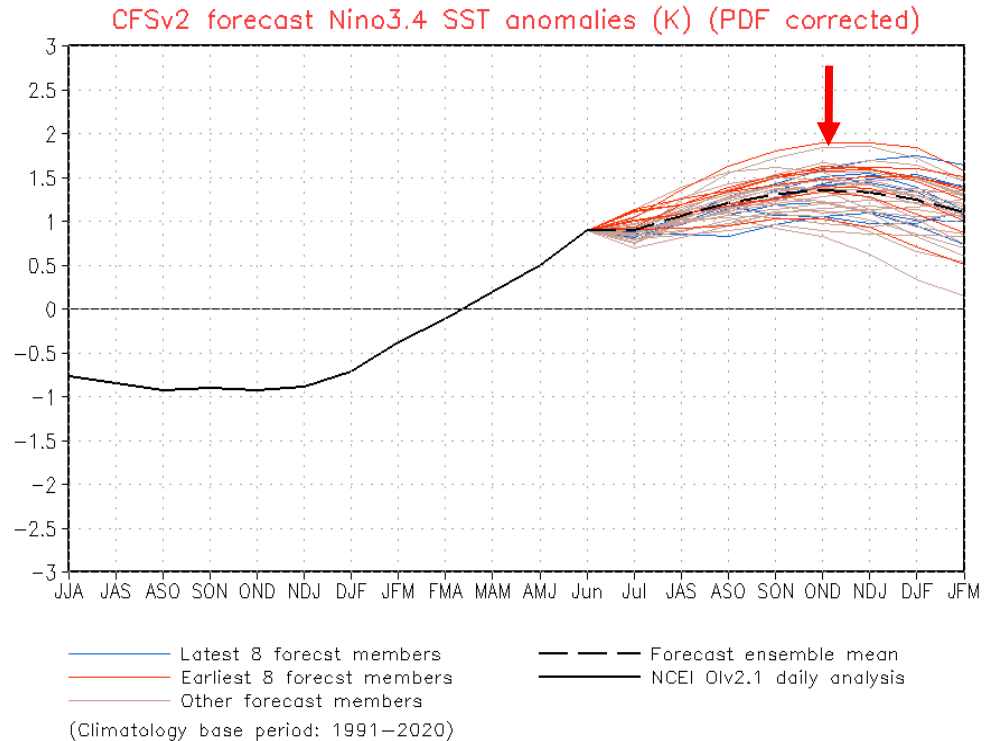
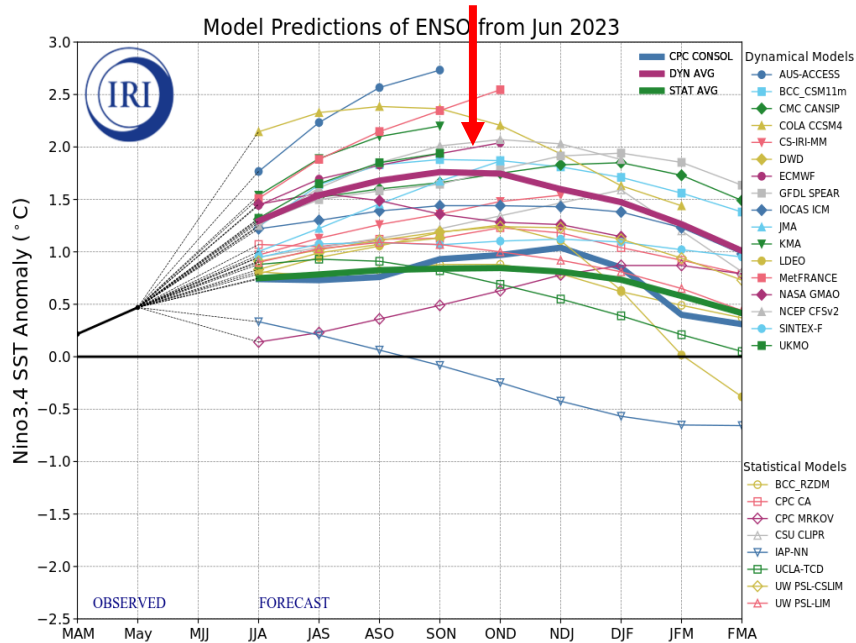
based on $-0.5^{\circ}/+0.5^{\circ}\text{C}$ thresholds in ERSSTv5 Niño-3.4 index



Status Atual: **El Niño**

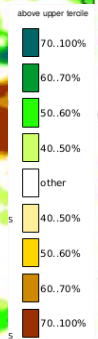
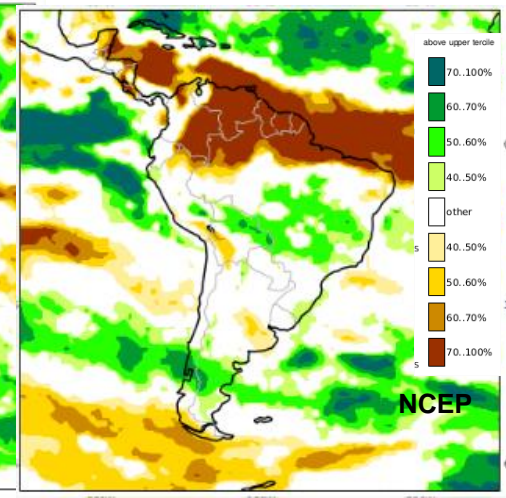
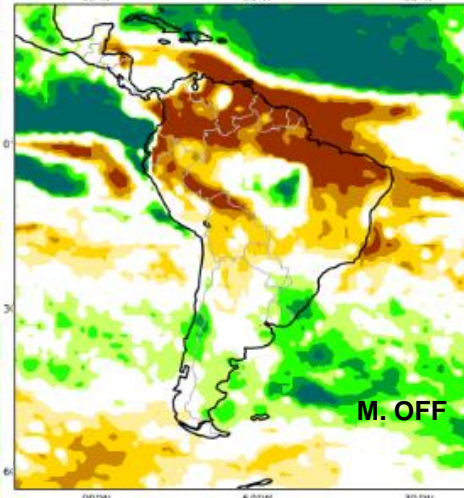
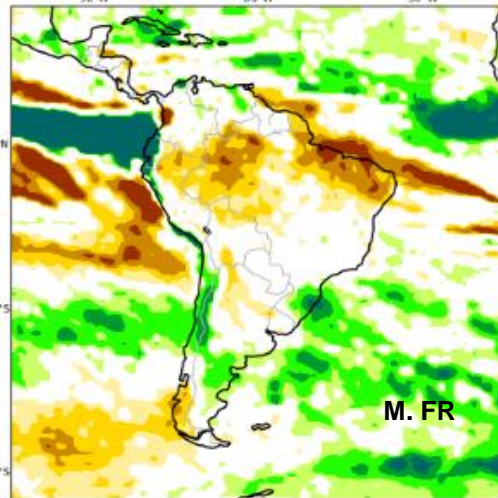
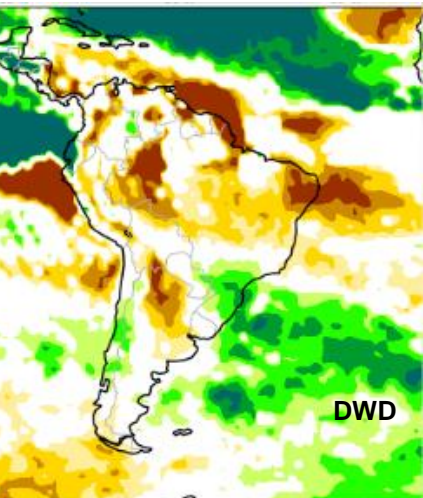
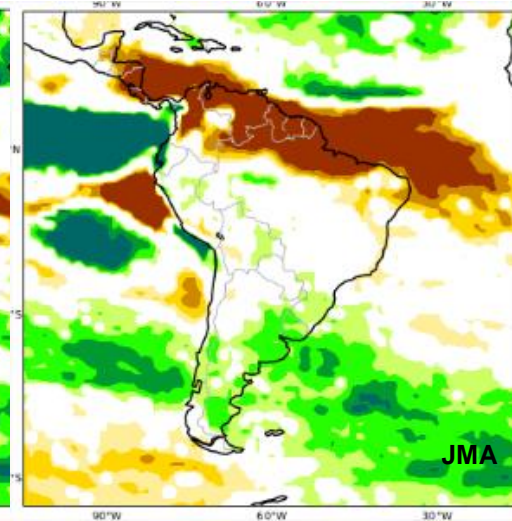
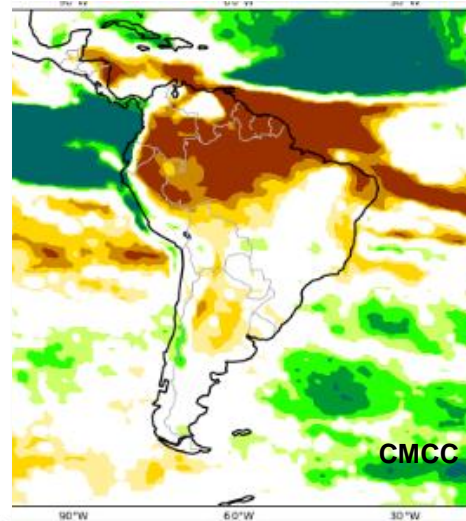
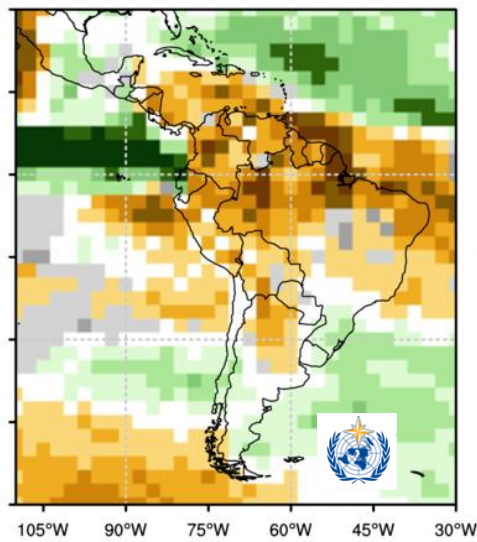
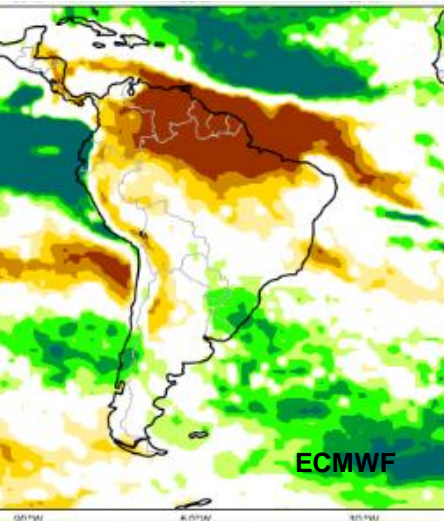
FONTE: NOAA

Previsão do “ENSO”



Atualizado: 20 de junho 2023

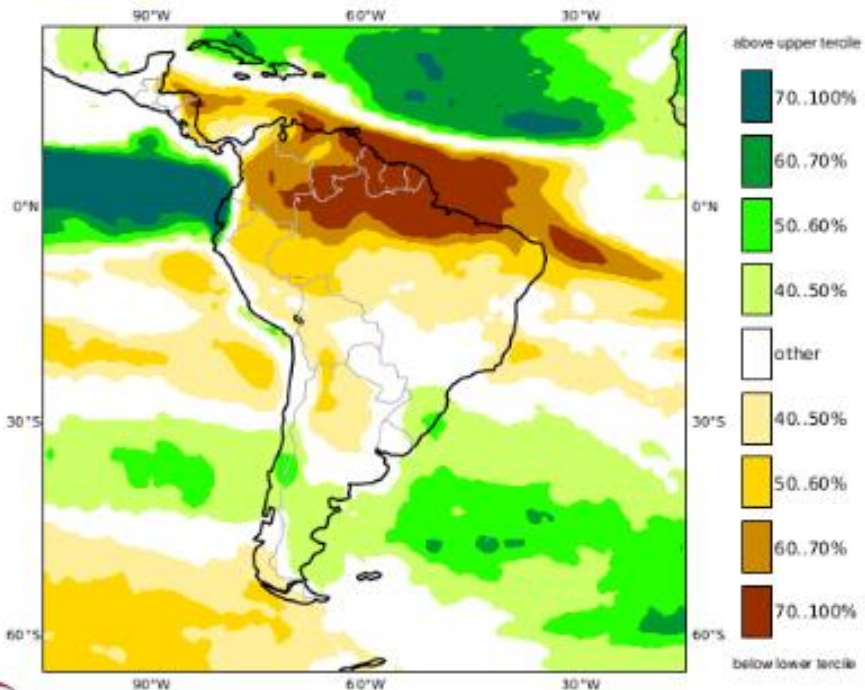
Previsão sazonal de Chuva JAS



Previsão Multi Modelo JAS

C3S multi-system seasonal forecast
 Prob(most likely category of precipitation)
 Nominal forecast start: 01/06/23
 Unweighted mean

JAS 2023



NMME Precipitation Anomalies (mm/day)

Jul2023-Sep2023 June2023 initial conditions

