

CEMADEN

Centro Nacional de Monitoramento e
Alertas de Desastres Naturais



Monitoramento da situação da seca na Região Sul

SETEMBRO 2024

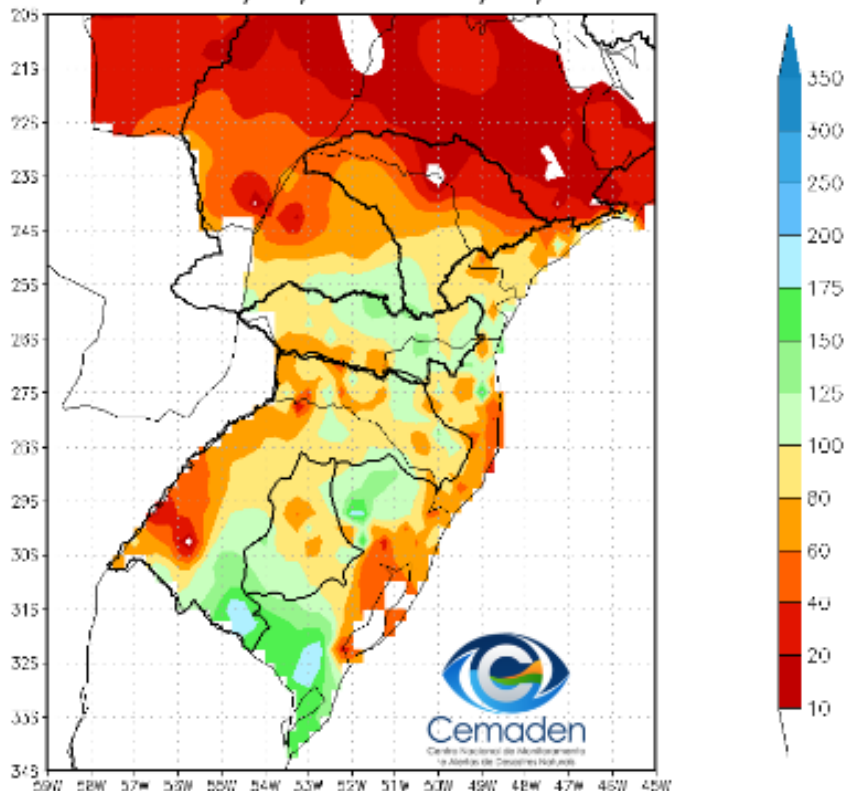


MINISTÉRIO DA
CIÊNCIA, TECNOLOGIA
E INOVAÇÃO

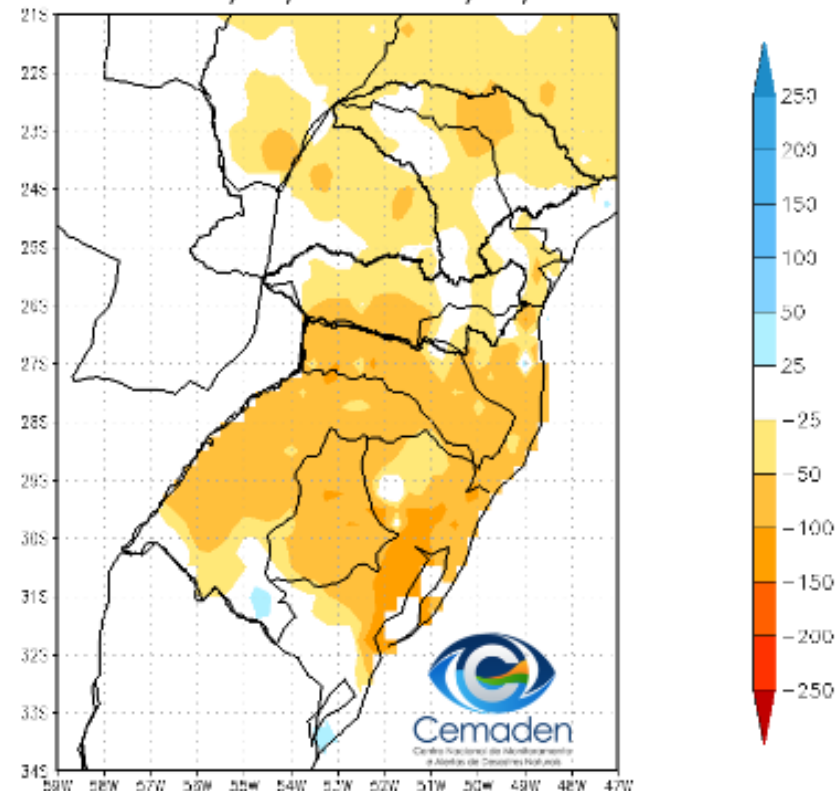


Precipitação nos últimos 30 dias

Precipitação Acumulada (mm) A.S.
Período: 18/08/2024 a 17/09/2024

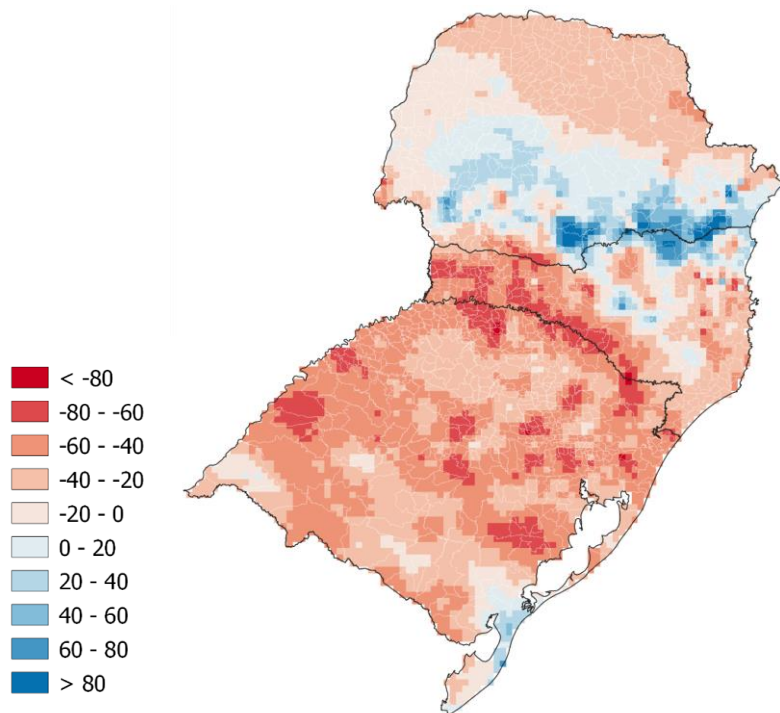


Anomalia de Precipitação (mm) A.S.
Período: 18/08/2024 a 17/09/2024

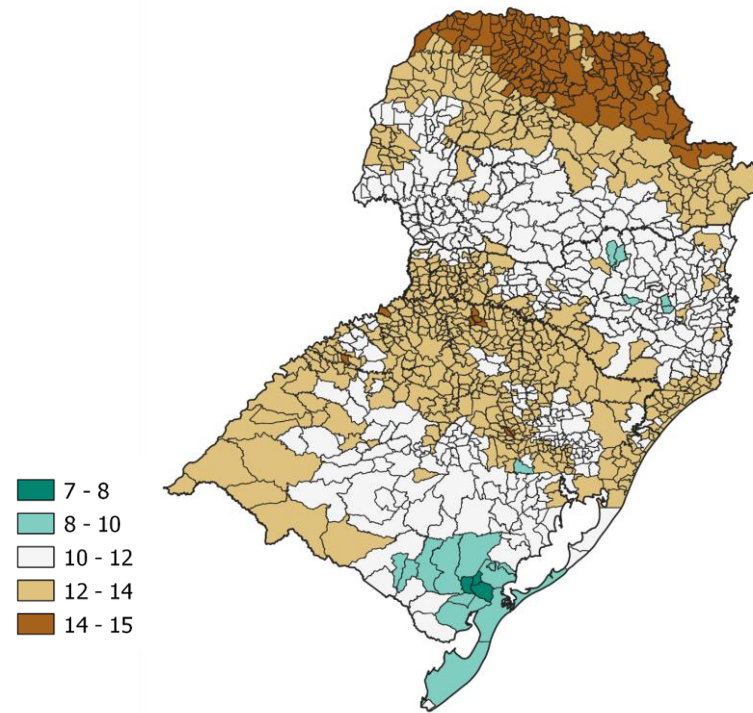


PRECIPITAÇÃO: SETEMBRO (ATÉ DIA 16) 2024

ANOMALIA (MM)

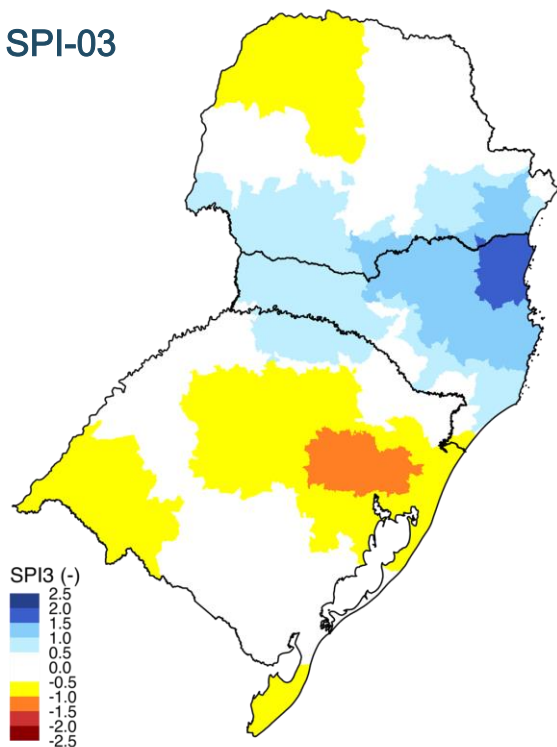


TOTAL DE DIAS SEM PRECIPITAÇÃO

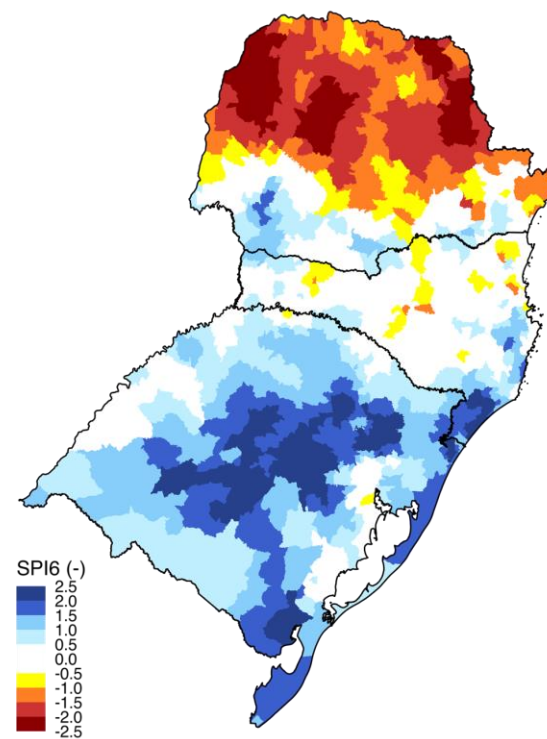


SPI: SETEMBRO 2024

SPI-03



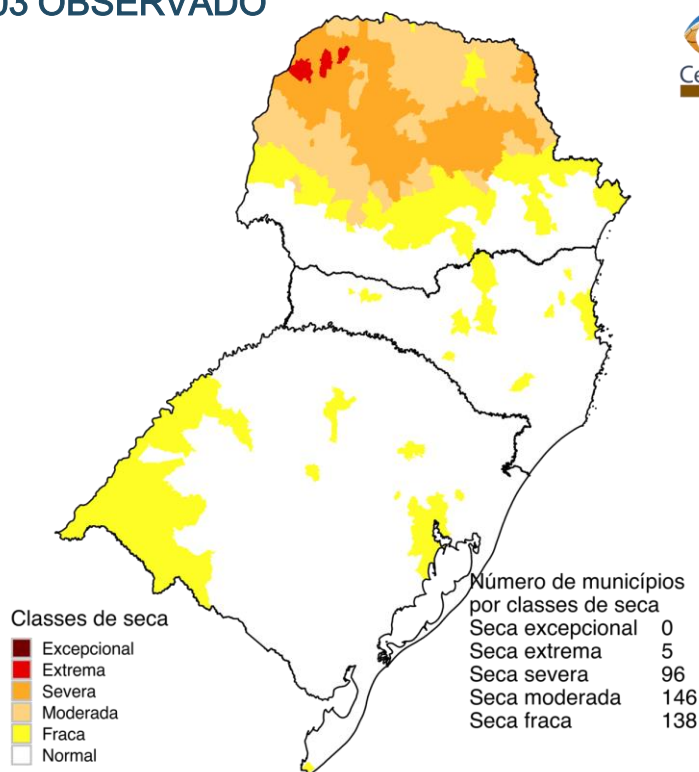
SPI-06



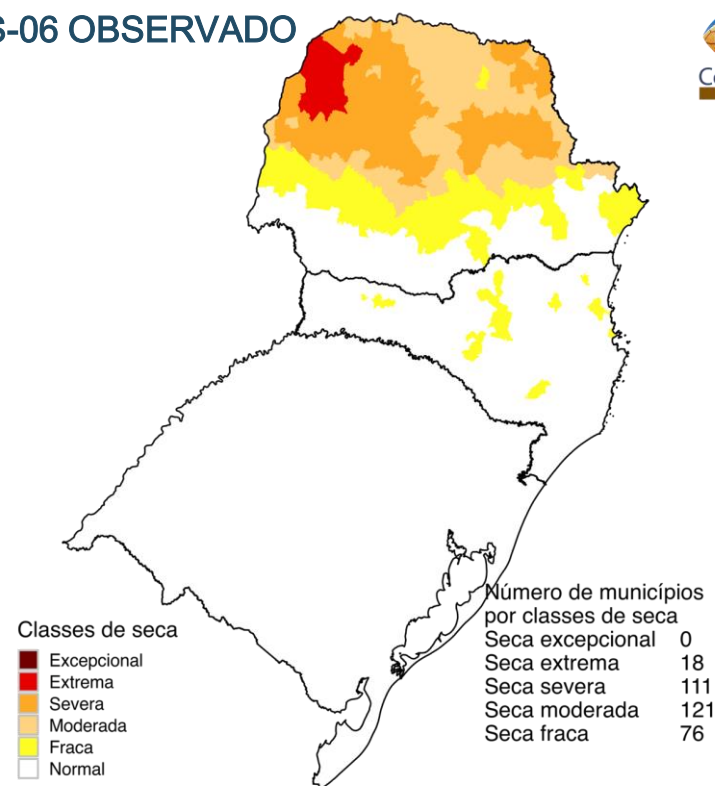
Setembro 2024

ÍNDICE INTEGRADO DE SECA: ANÁLISE POR **MUNICÍPIOS**

IIS-03 OBSERVADO

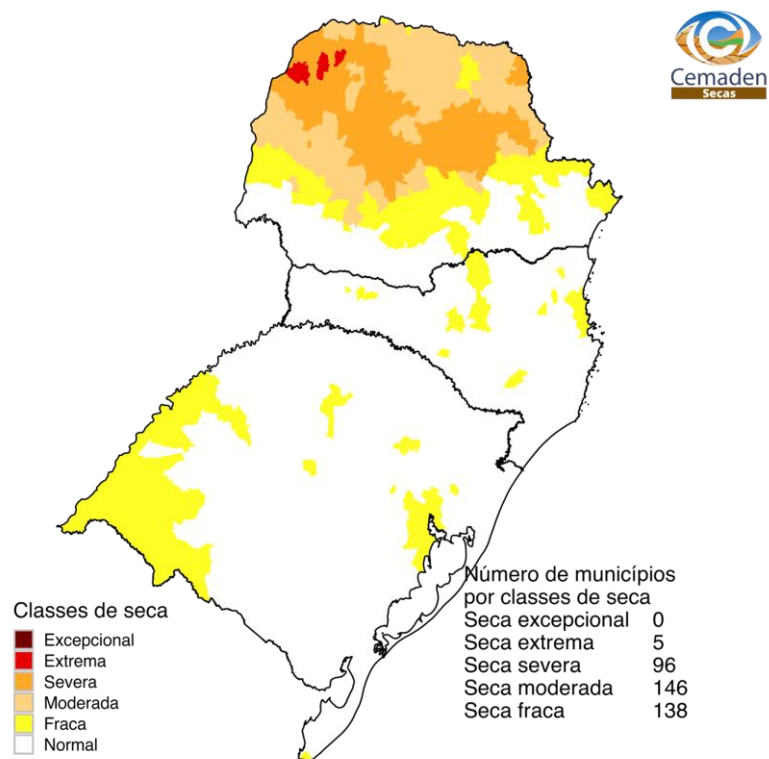


IIS-06 OBSERVADO

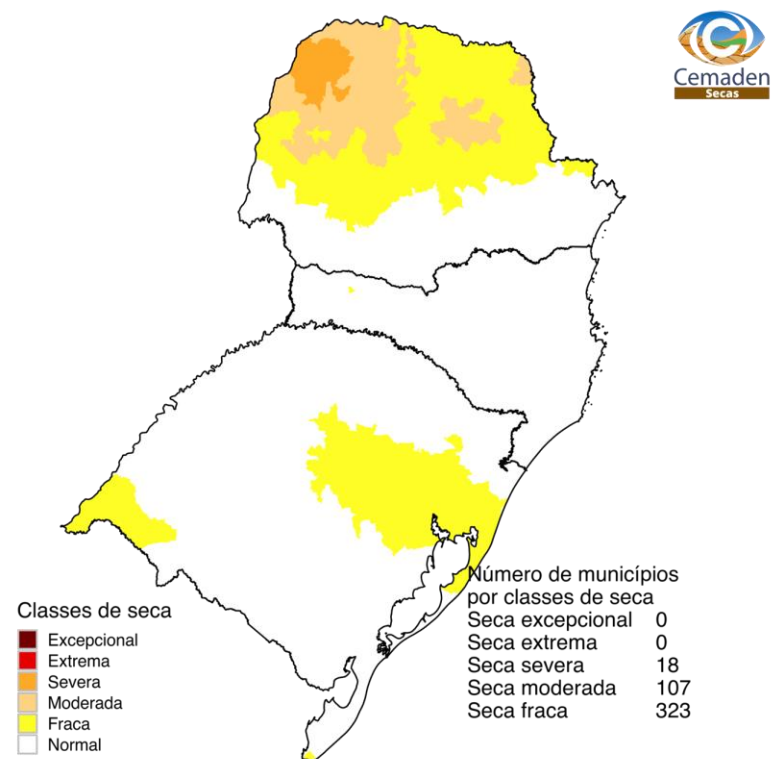


ÍNDICE INTEGRADO DE SECA (3 MESES)

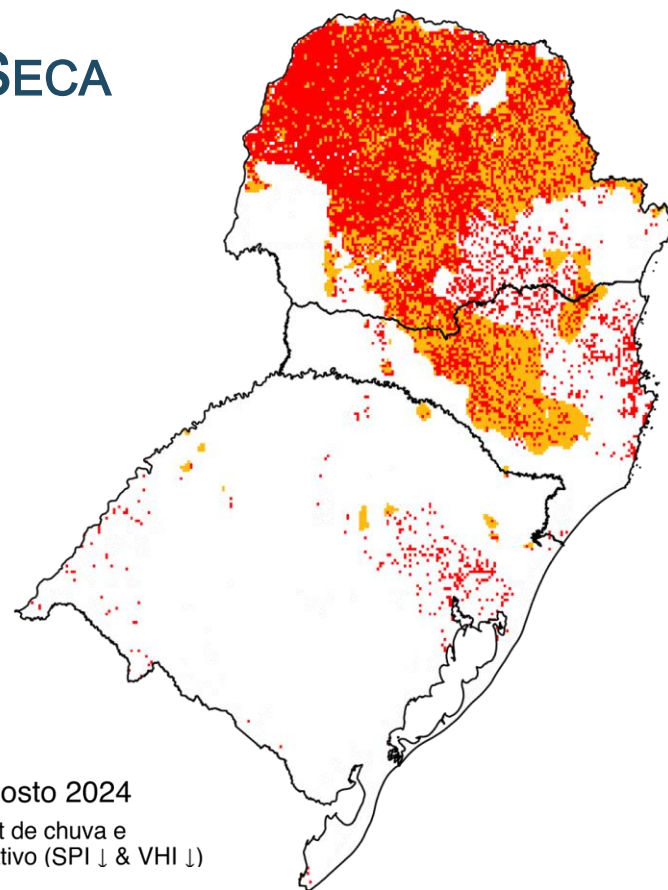
IIS-03 OBSERVADO




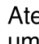

IIS-03 OBSERVADO PREVISÃO



PROGRESSÃO DAS CONDIÇÕES DE SECA (PCS)

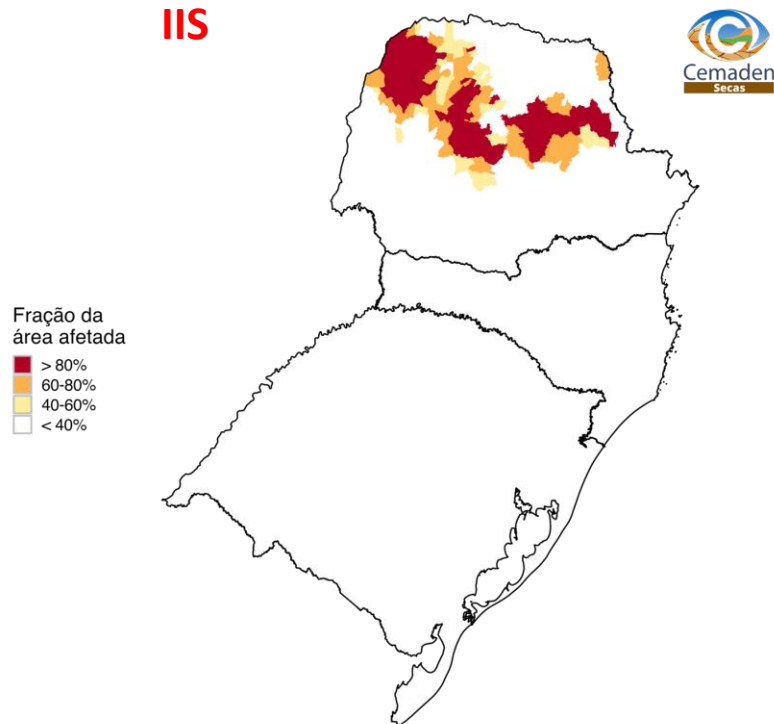


Propagação Incremental das Condições de Seca (PICS) - Agosto 2024

Condição normal  Atenção - déficit de chuva e umidade do solo (SPI ↓ & US ↓)  Alerta - déficit de chuva e stress vegetativo (SPI ↓ & VHI ↓) 

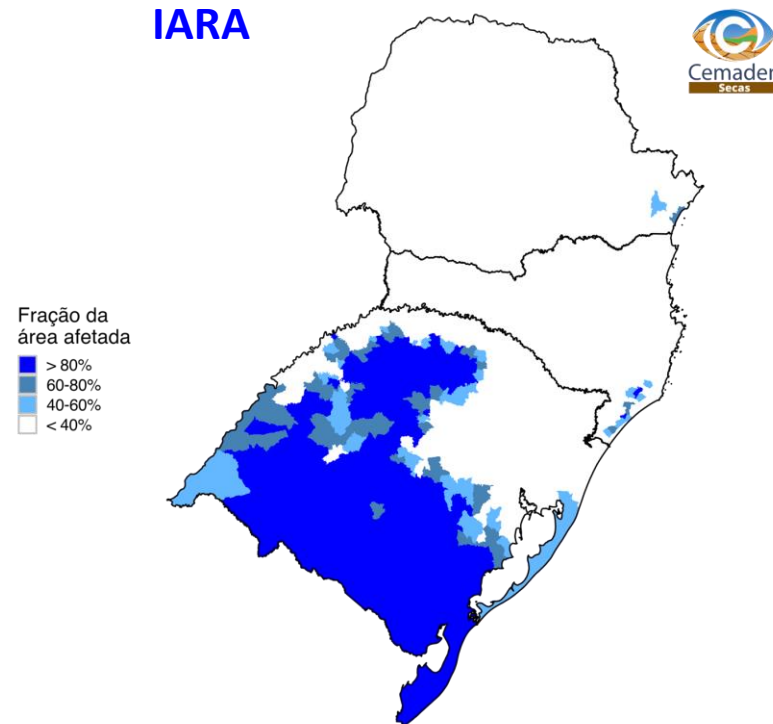
ÁREAS DE PASTAGENS E AGRÍCOLAS AFETADAS PELA SECA: SETEMBRO/2024

IIS

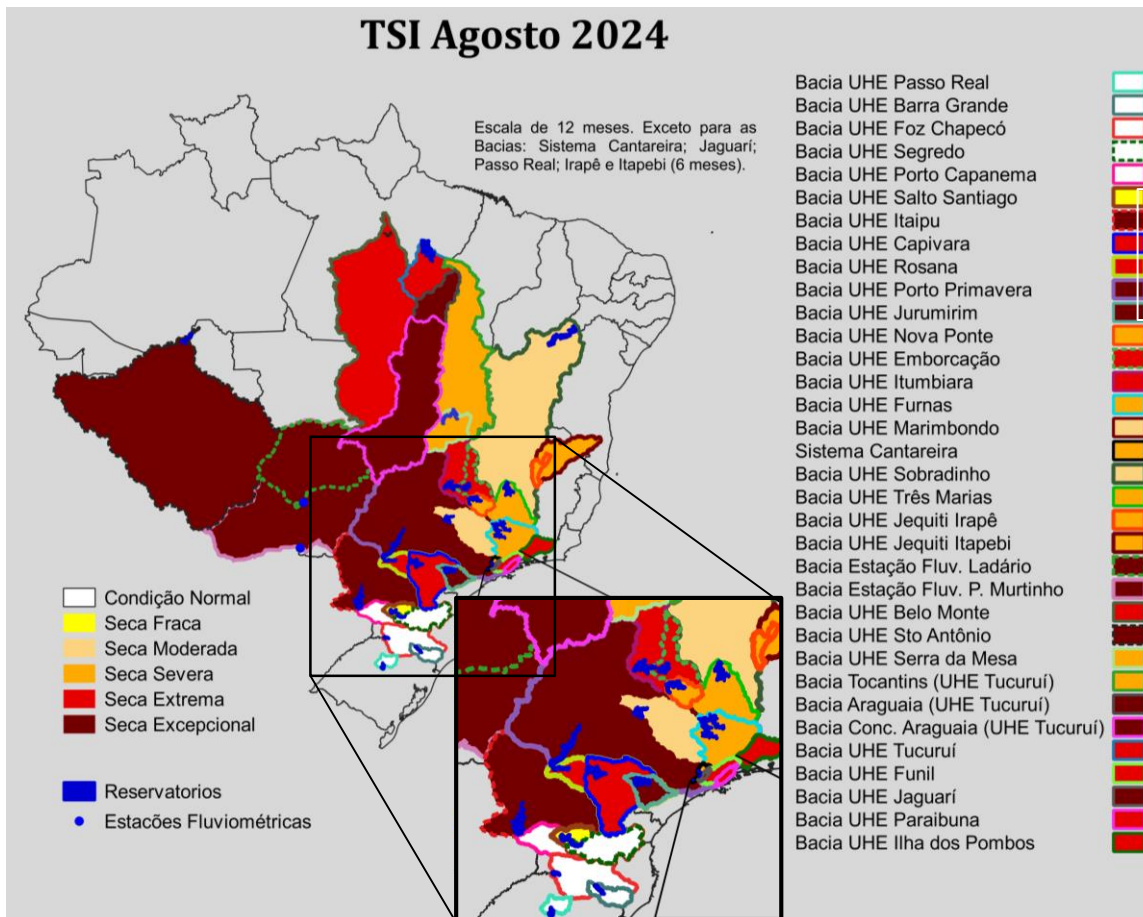


Agosto 2024
Fração da área agroprodutiva afetada pela seca
Fonte: Cemaden/MCTI.

IARA



Agosto 2024
Fração da área agroprodutiva afetada pelo excesso de água - IARA
Fonte: Cemaden/MCTI.

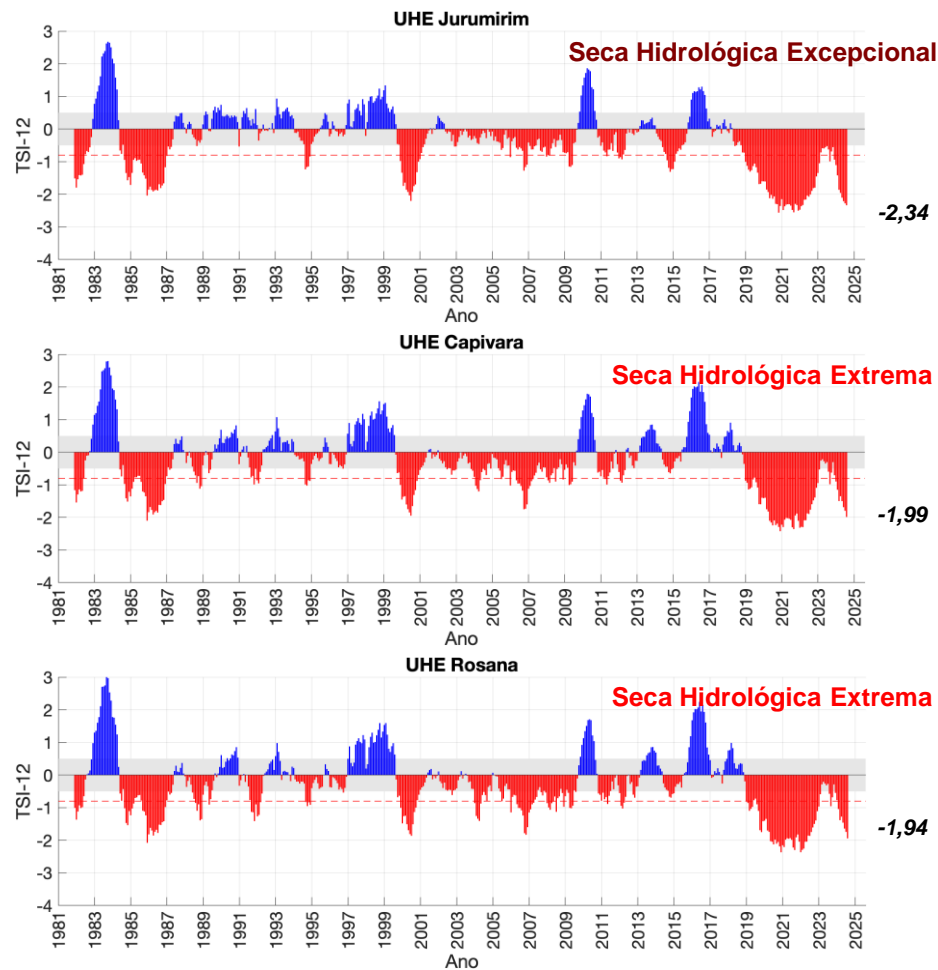
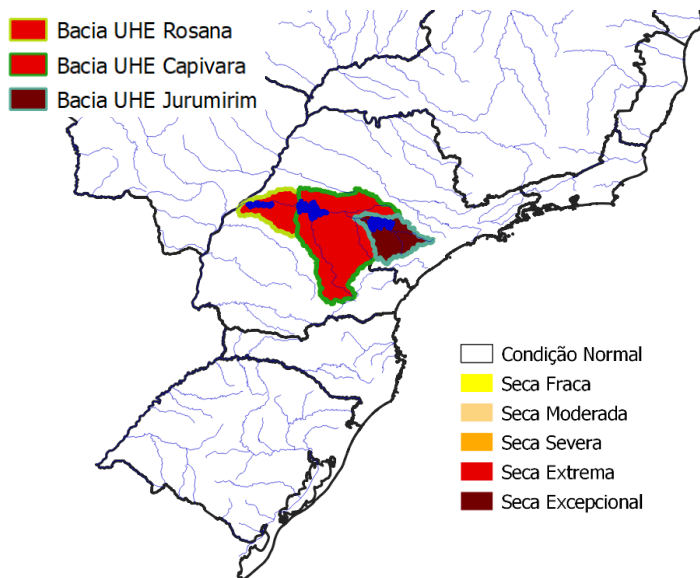


Índice Padronizado Bivariado (Precipitação-Vazão) - TSI

Fonte: CEMADEN/MCTI
Dados: Precipitação (CHIRPS) e Vazão (ONS e ANA) - Jan/1981-Agosto/2024

BACIA DO RIO PARANAPANEMA

Agosto/2024

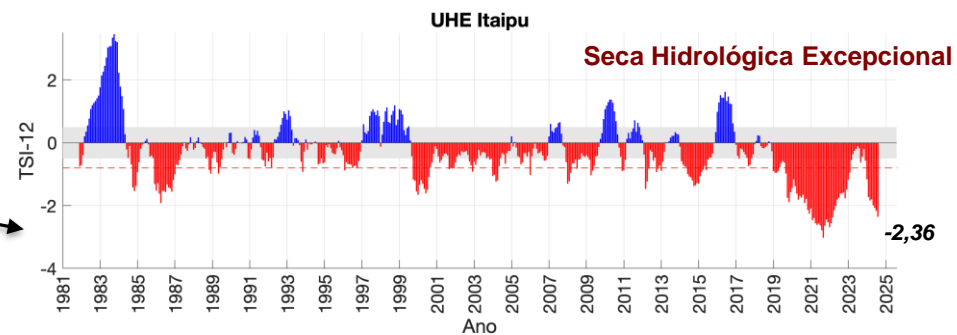
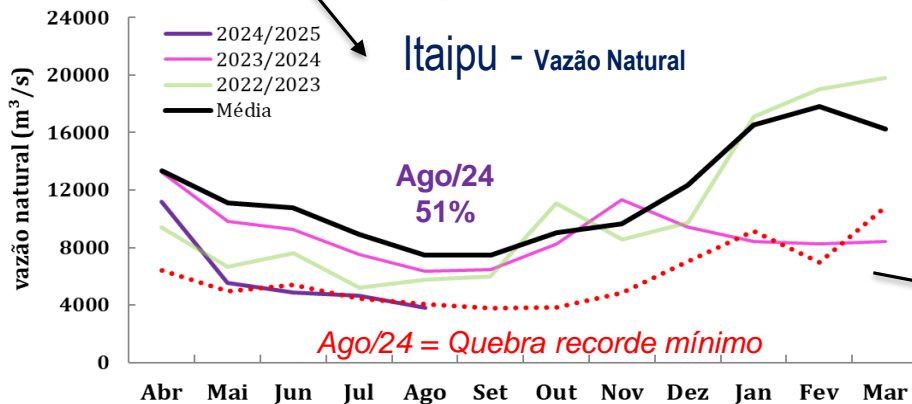
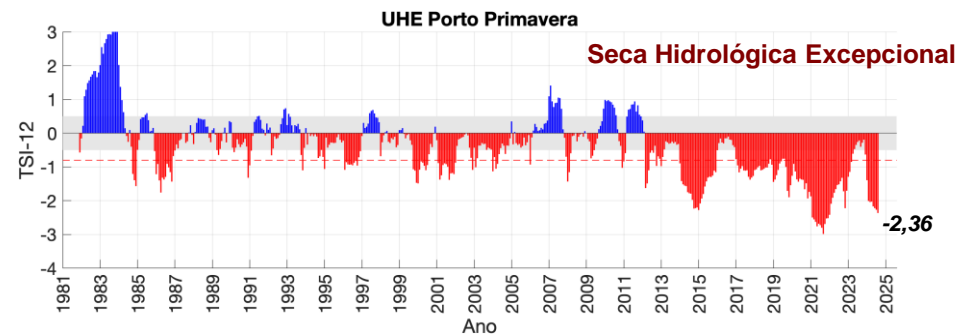
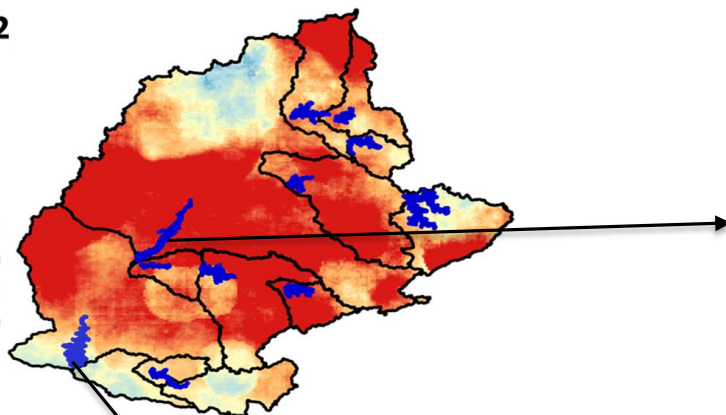
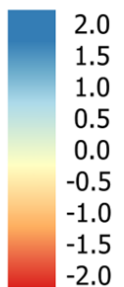


Fonte: CEMADEN/MCTI

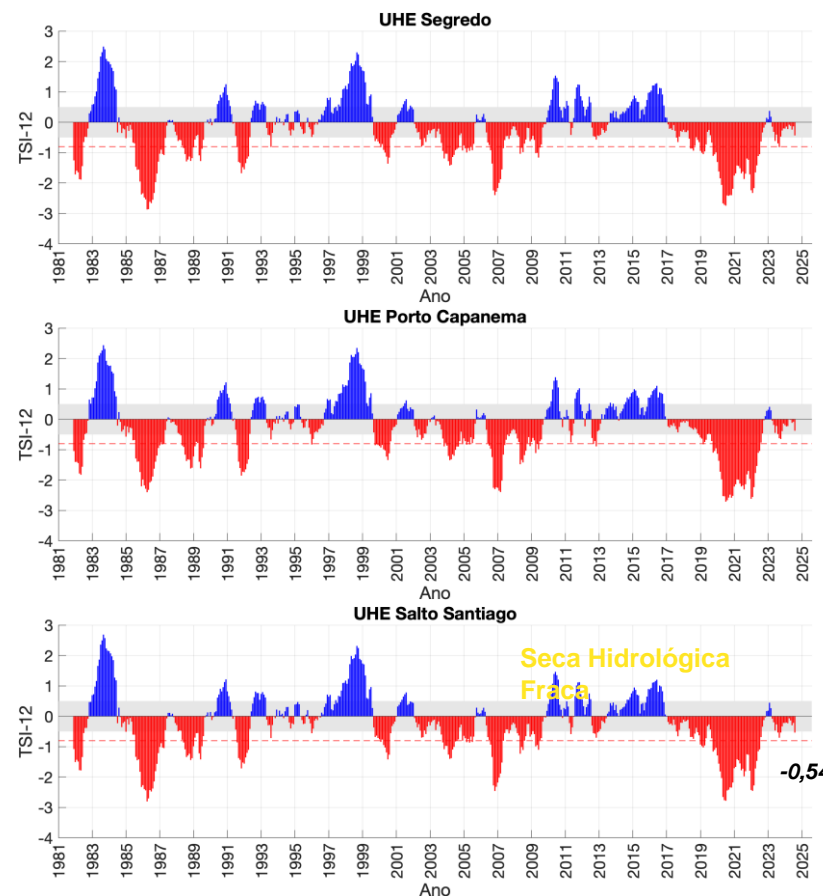
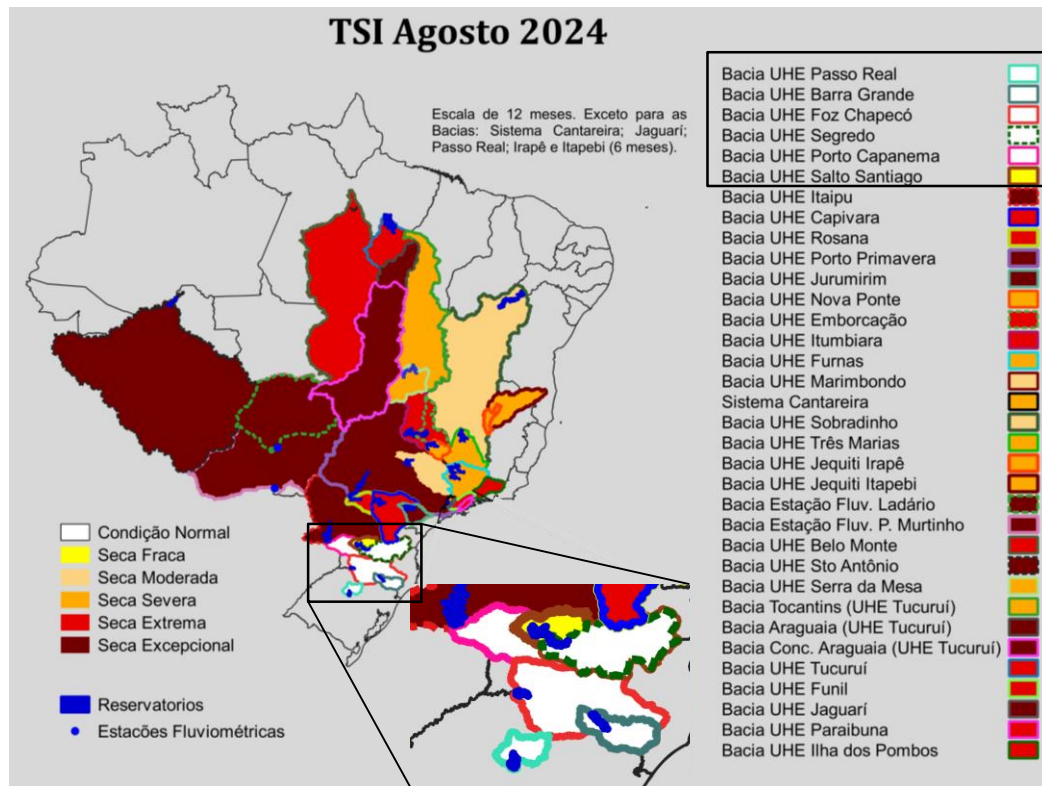
Dados: Precipitação (CHIRPS) e Vazão (ONS e ANA) - Jan/1981-Agosto/2024

BACIA DO RIO PARANÁ

SPI 12



Índice Padronizado Bivariado (Precipitação-Vazão) - TSI



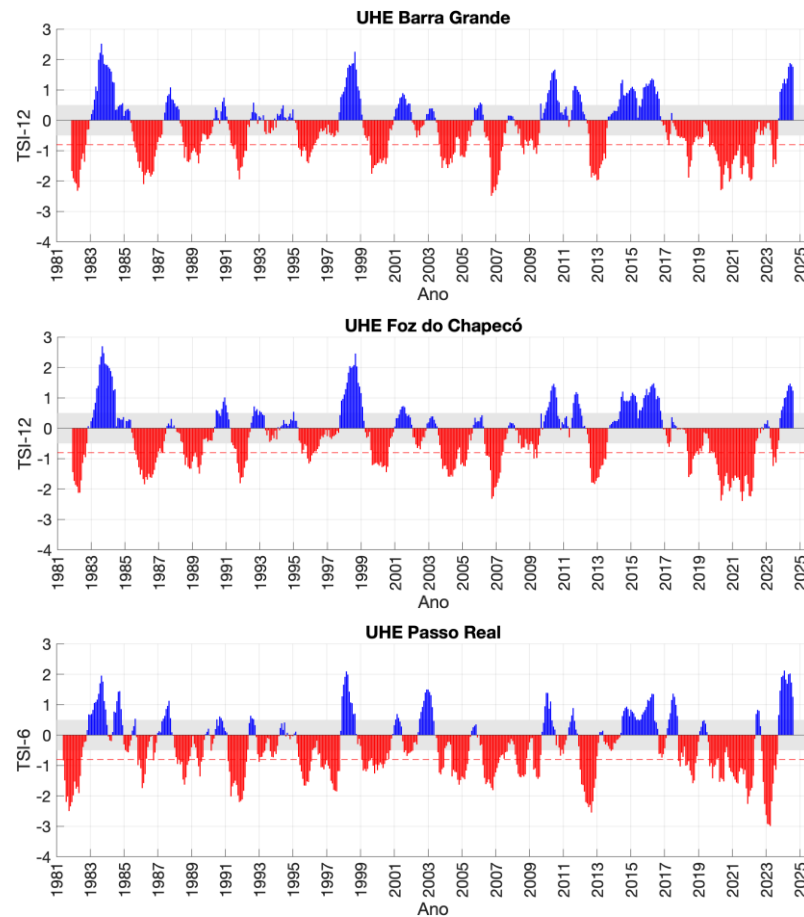
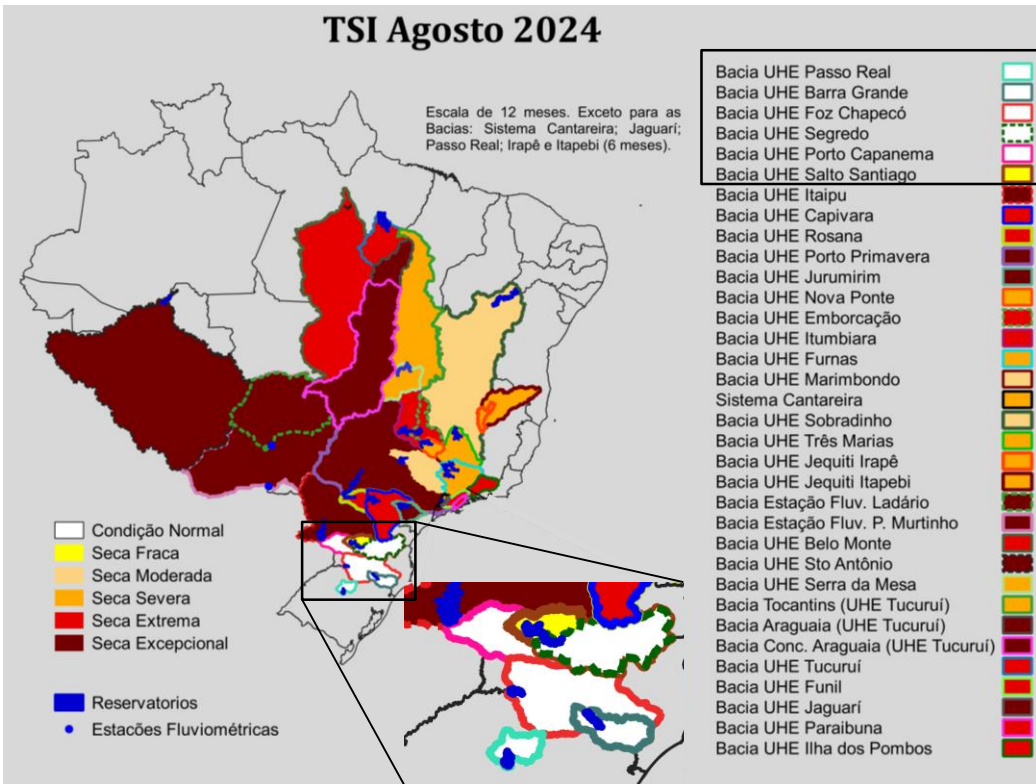
Fonte: CEMADEN/MCTI

Dados: Precipitação (CHIRPS) e Vazão (ONS e ANA) - Jan/1981-Agosto/2024

Índice Padronizado Bivariado (Precipitação-Vazão) - TSI

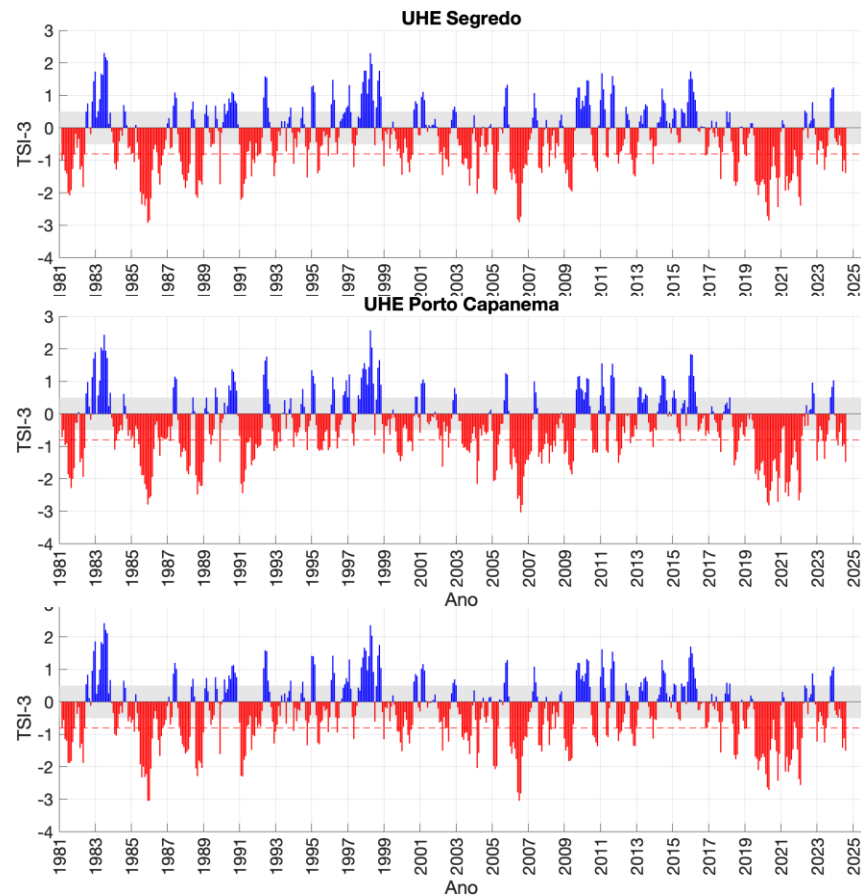
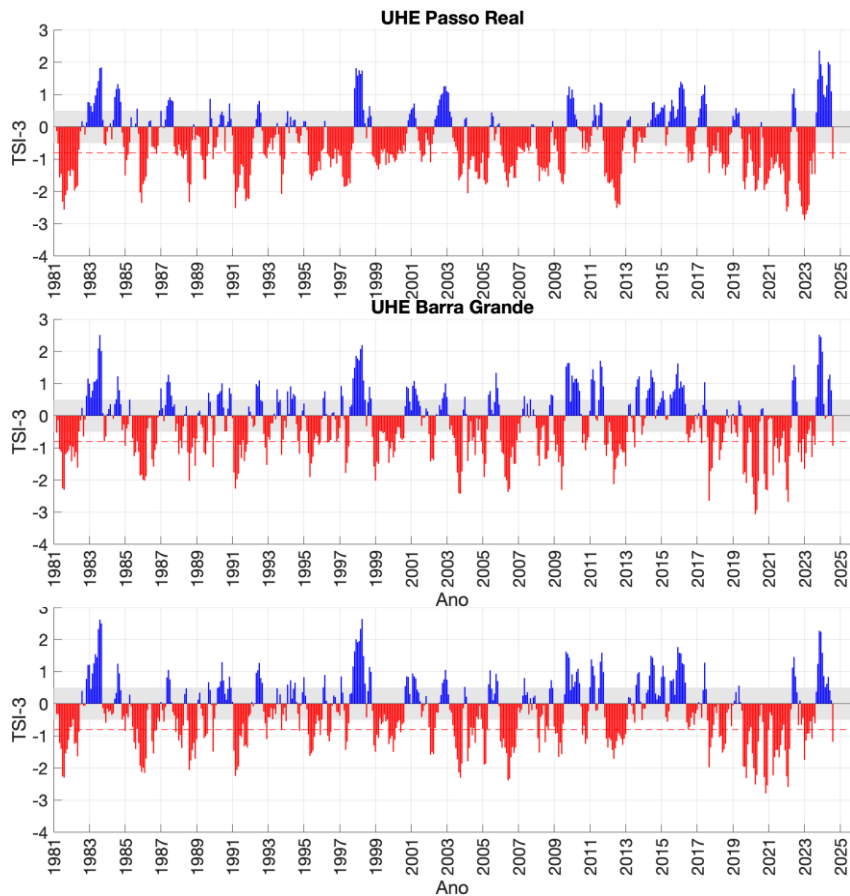
TSI Agosto 2024

Escala de 12 meses. Exceto para as Bacias: Sistema Cantareira; Jaguari; Passo Real; Irapê e Itapebi (6 meses).



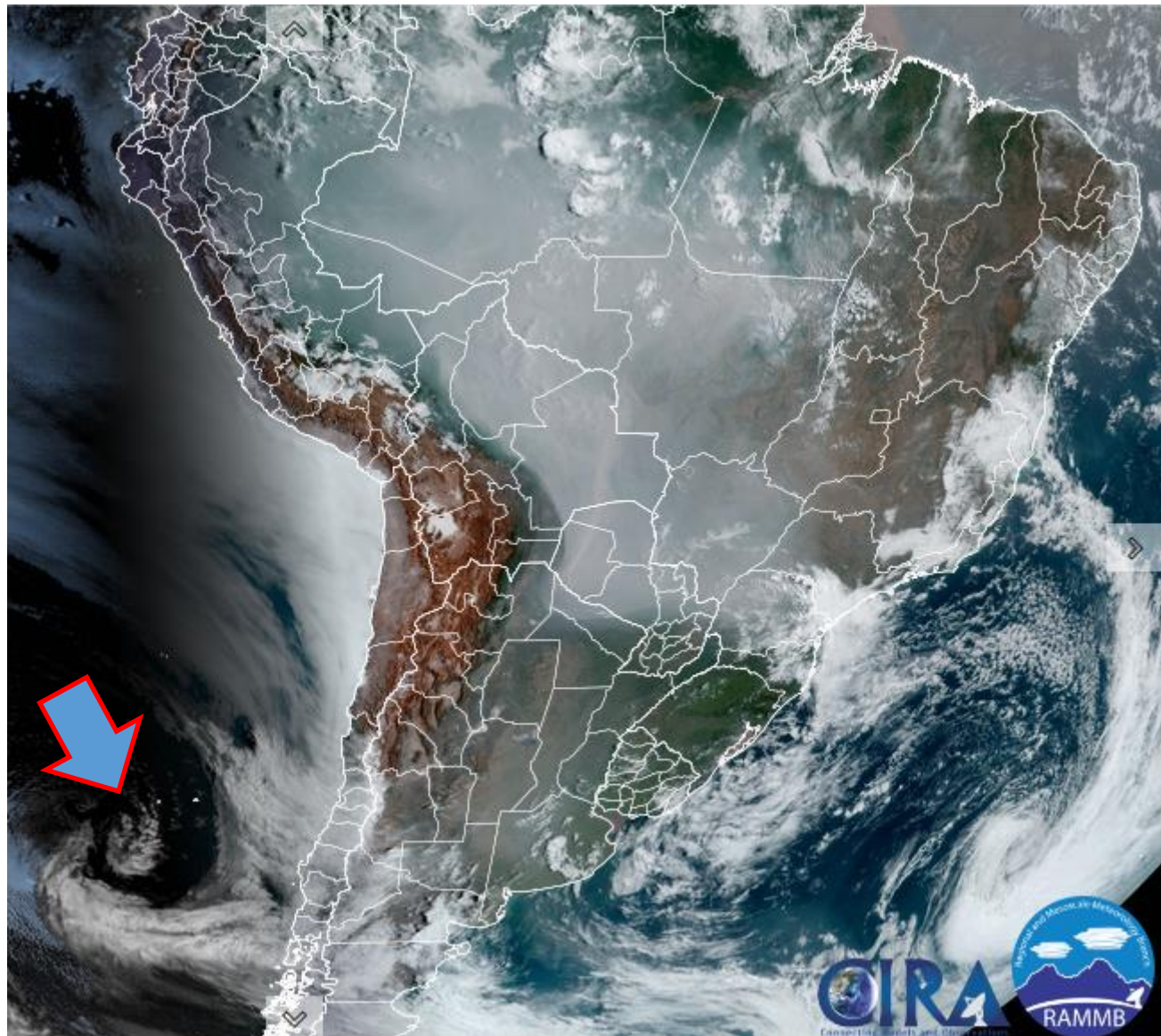
Fonte: CEMADEN/MCTI

Dados: Precipitação (CHIRPS) e Vazão (ONS e ANA) - Jan/1981-Agosto/2024



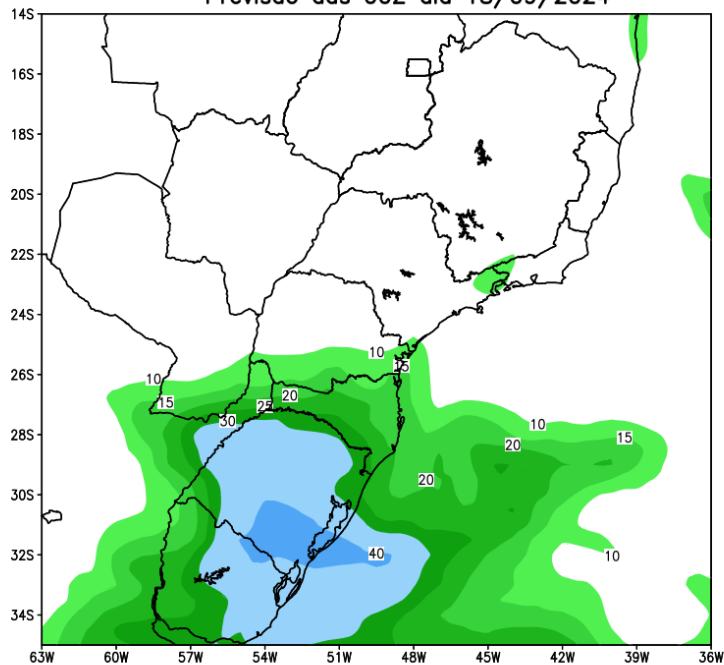
Na escala de 3 meses: condição de seca moderada ($TSI-3 < -0,8$)

Situação meteorológica atual

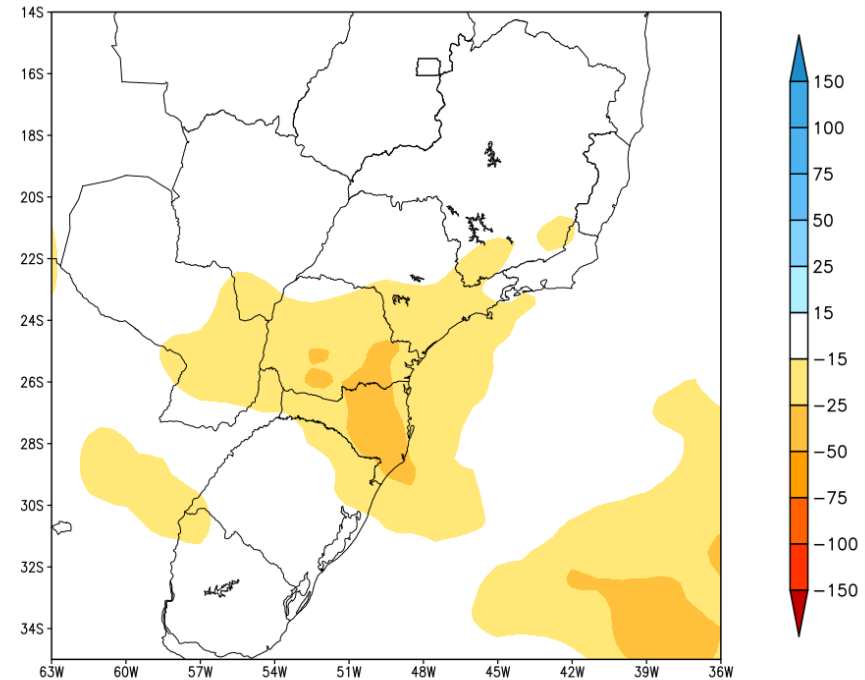


Previsão de chuva próximos 7 dias

GEFS / BRASIL_SUL
Precipitação acumulada 1aSem (mm)
Previsão das 00Z dia 18/09/2024



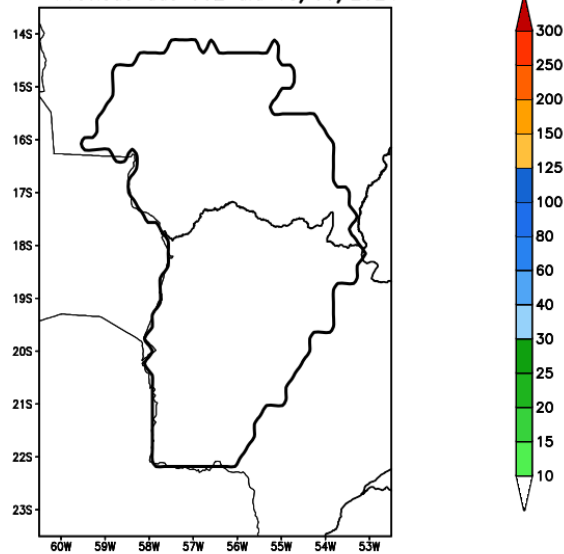
Anomalia de Precipitação BR_SUL (mm)
Período: 2024091800 a 2024092500



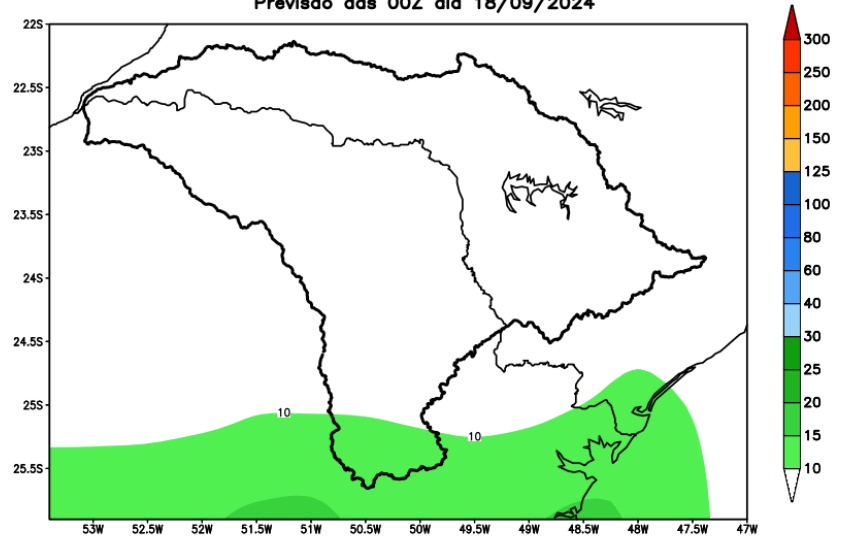
MODELO GEFS

Previsão para as principais bacias

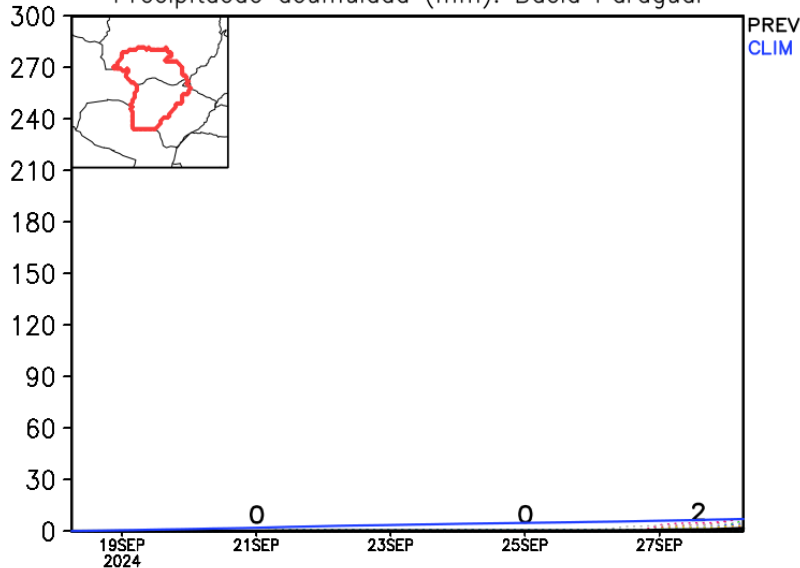
GEFS / Bacia do Rio Paraguai
Precipitação acumulada em 7 dias (mm)
Previsão das 00Z dia 18/09/2024



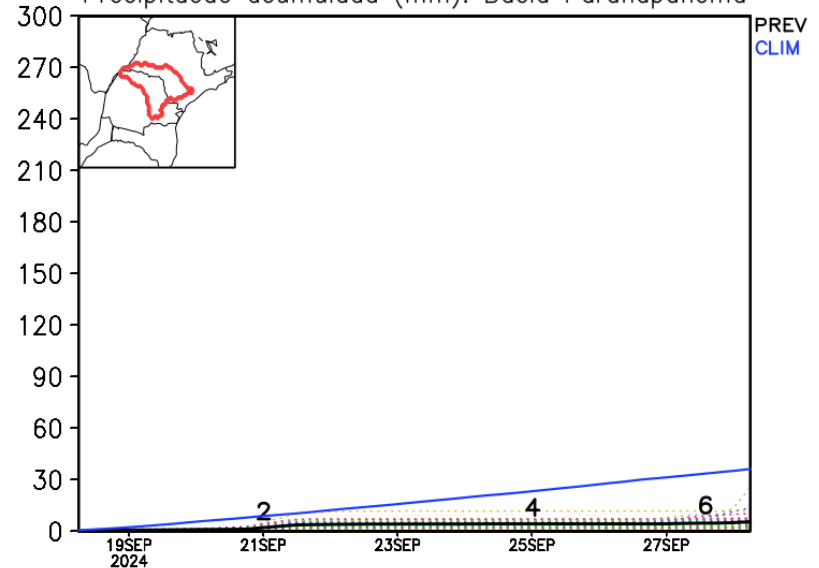
GEFS / Bacia do Rio Paranapanema
Precipitação acumulada em 7 dias (mm)
Previsão das 00Z dia 18/09/2024



Precipitação acumulada (mm): Bacia Paraguai

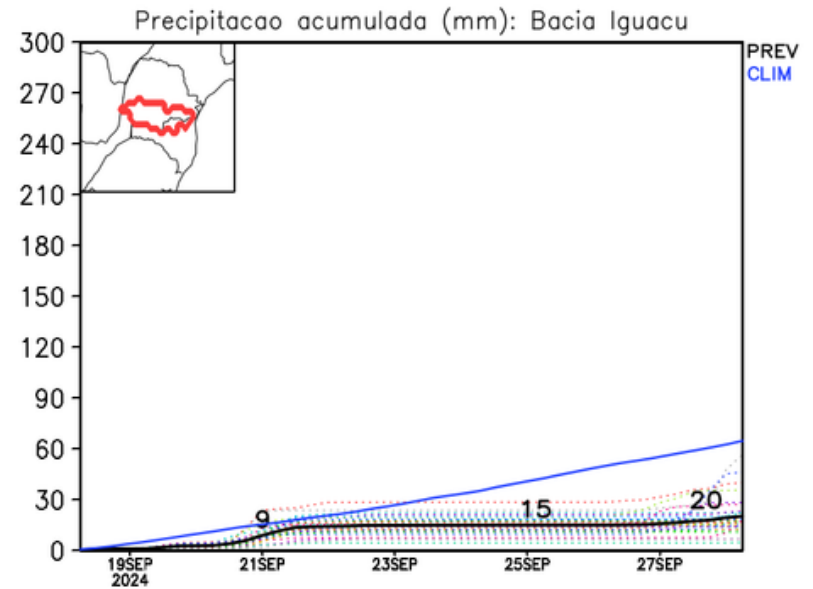
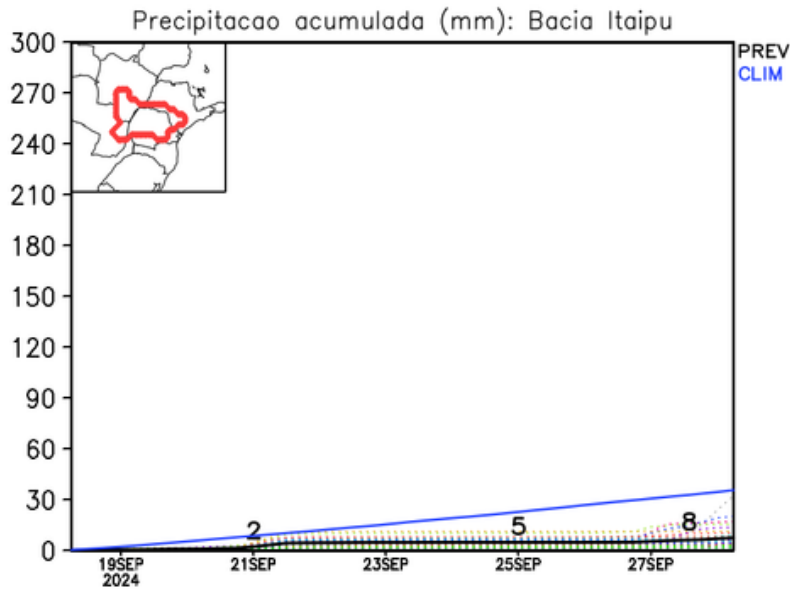
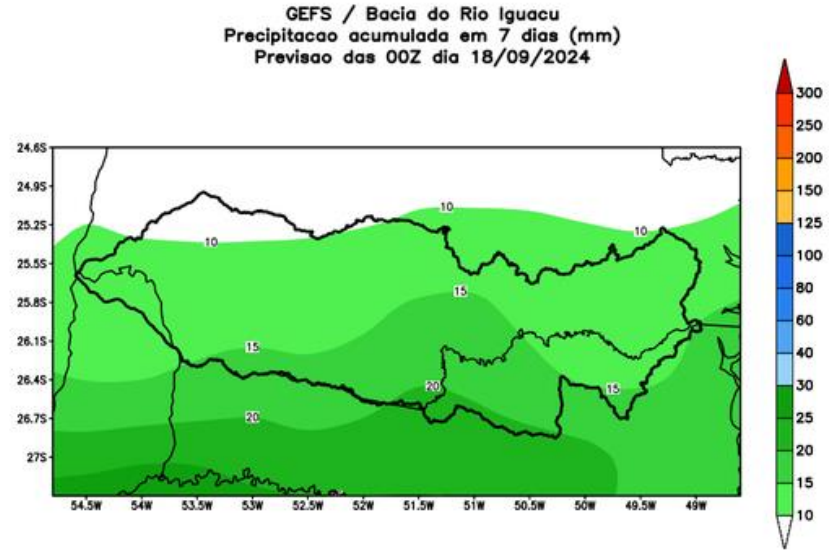
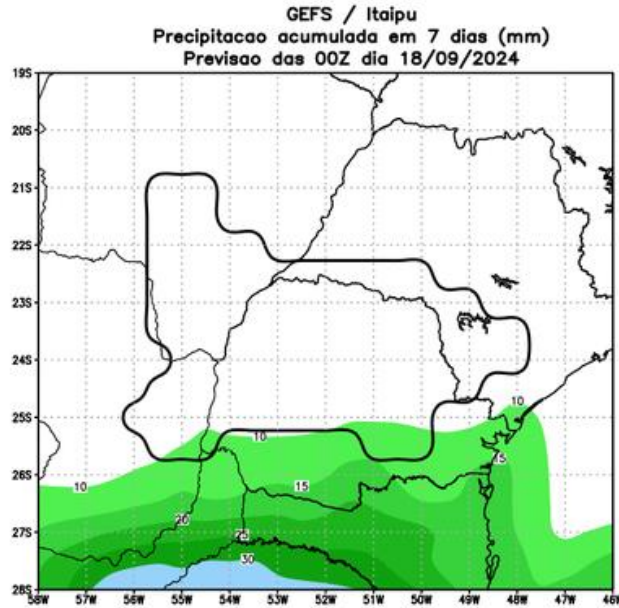


Precipitação acumulada (mm): Bacia Paranapanema

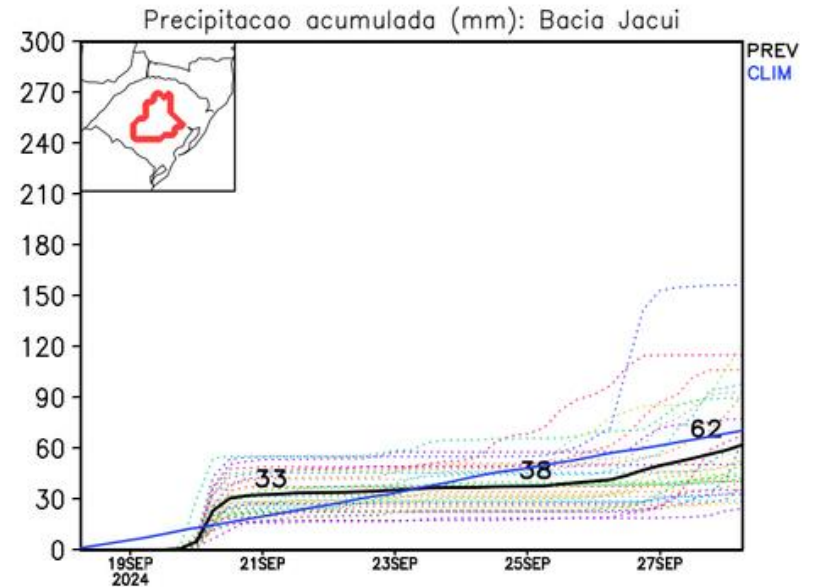
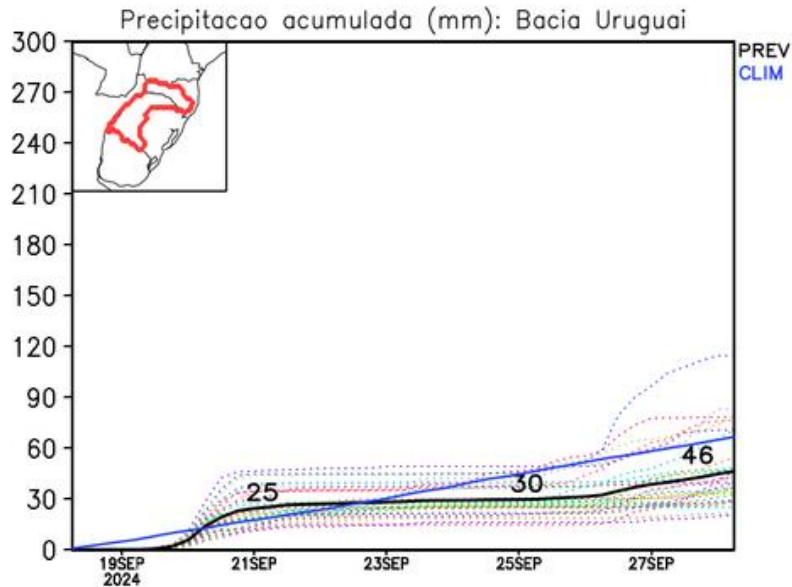
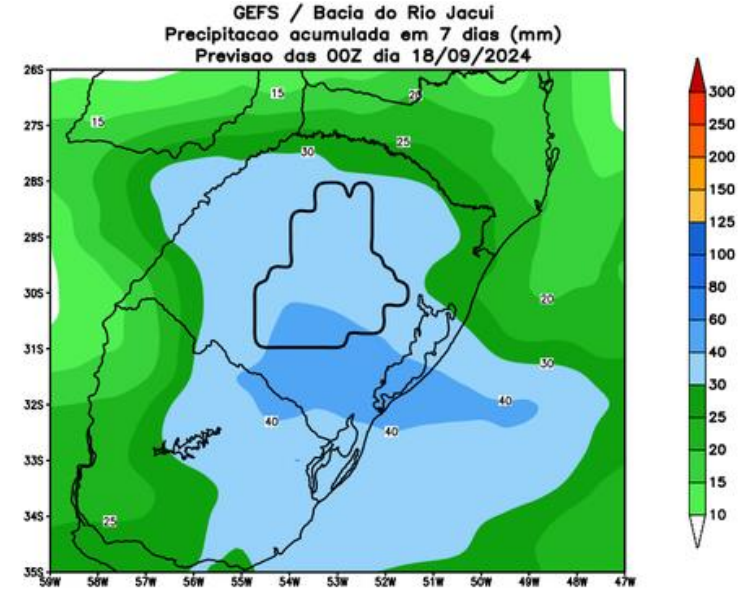
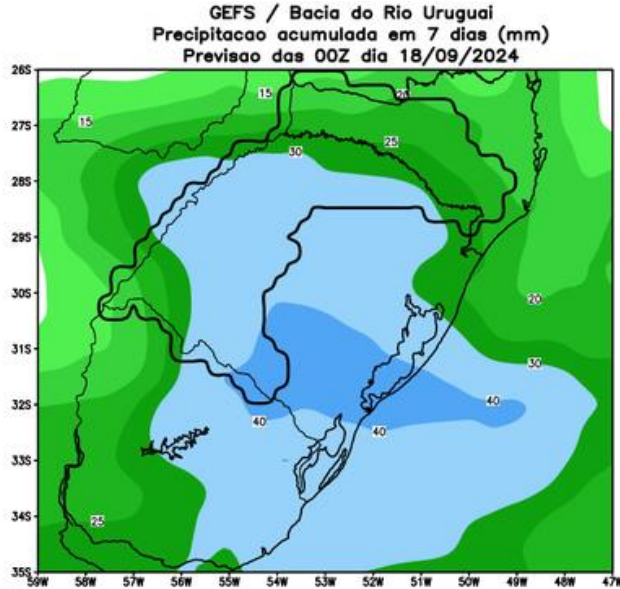


MODELO GEFS

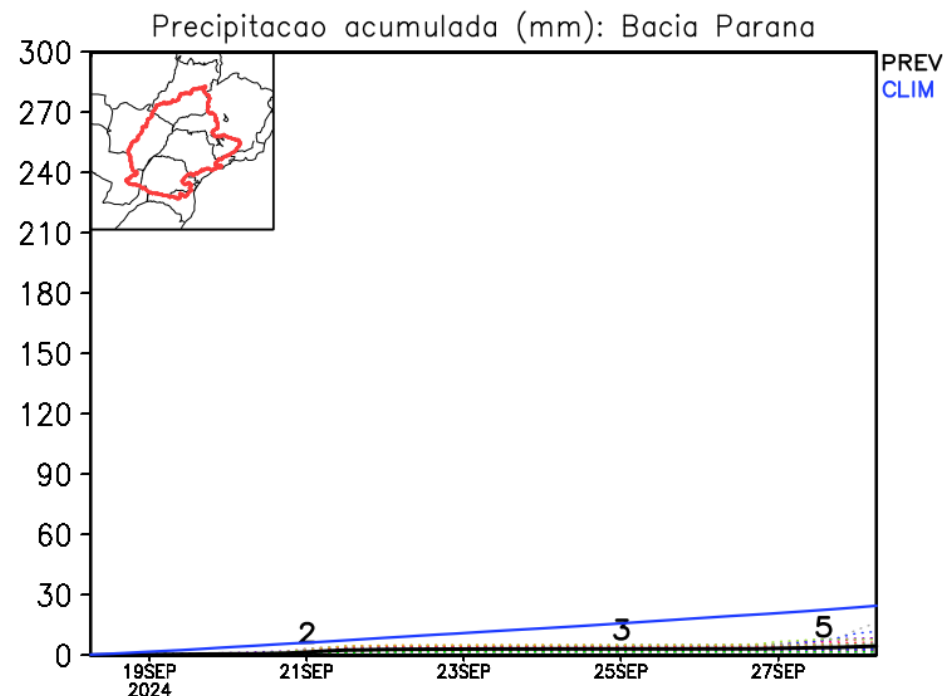
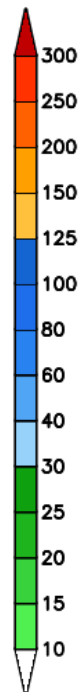
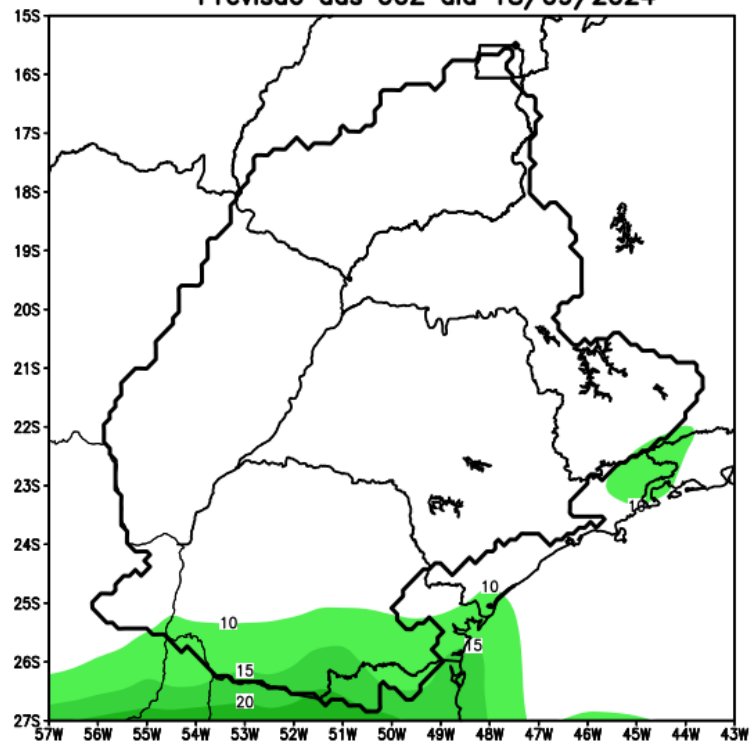
Previsão para as principais bacias



Previsão para as principais bacias

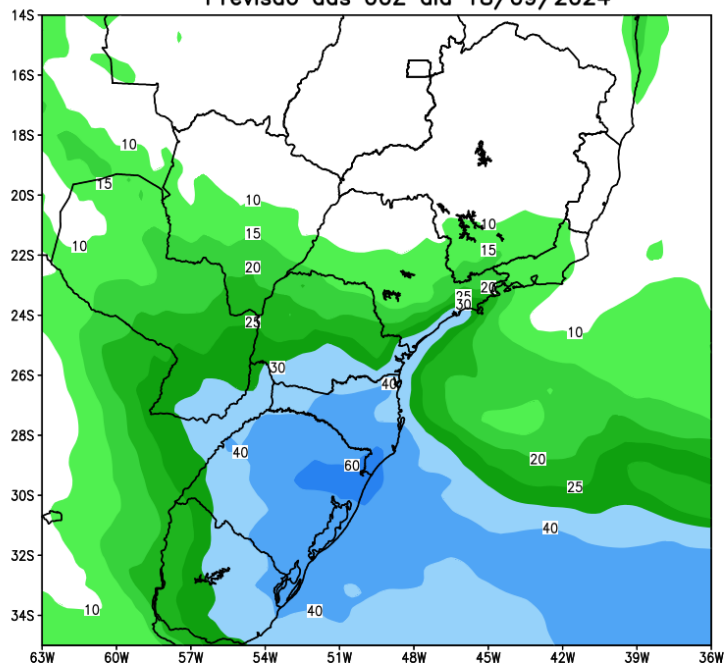


GEFS / Bacia do Parana
Precipitação acumulada em 7 dias (mm)
Previsão das 00Z dia 18/09/2024

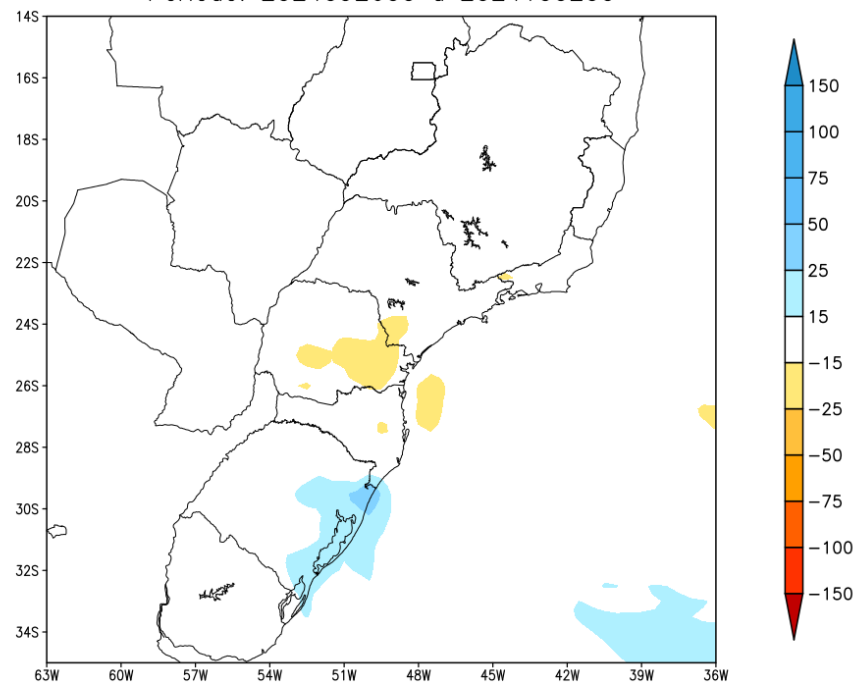


Tendência para a segunda semana

GEFS / BRASIL_SUL
Precipitação acumulada 2aSem (mm)
Previsão das 00Z dia 18/09/2024



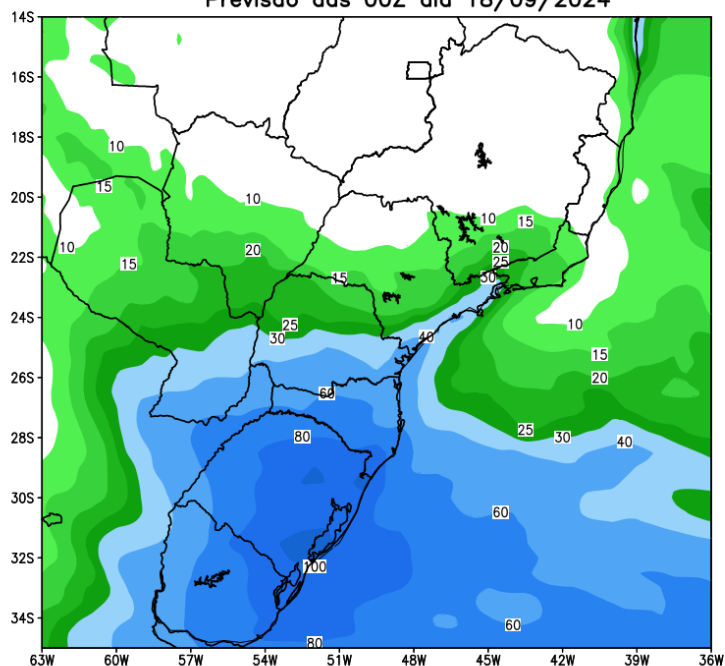
Anomalia de Precipitação BR_SUL (mm)
Período: 2024092600 a 2024100200



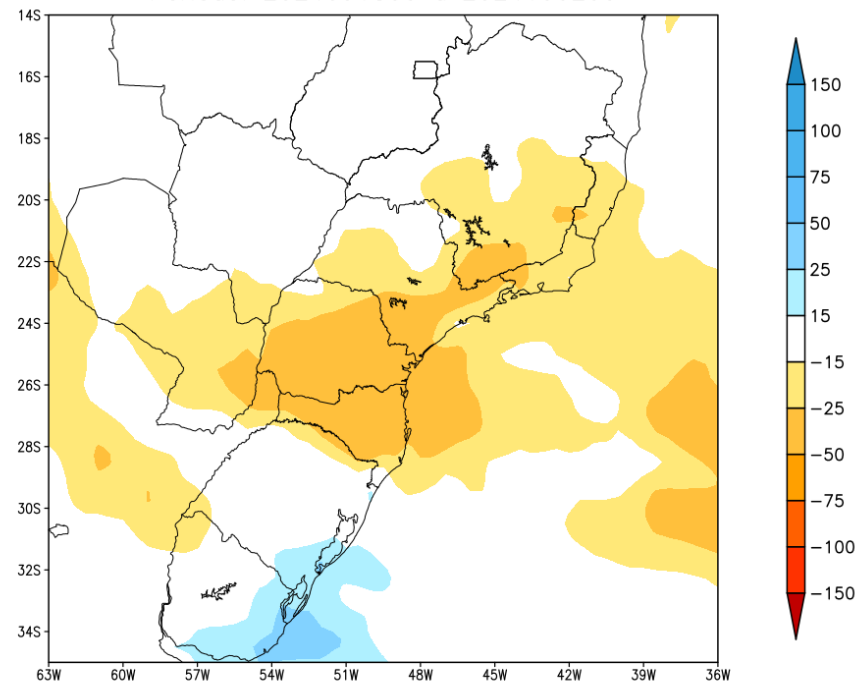
MODELO GFS

Tendência para as duas próximas semanas

GEFS / BRASIL_SUL
Precipitação acumulada 14 dias (mm)
Previsão das 00Z dia 18/09/2024



Anomalia de Precipitação BR SUL (mm)
Período: 2024091800 a 2024100200

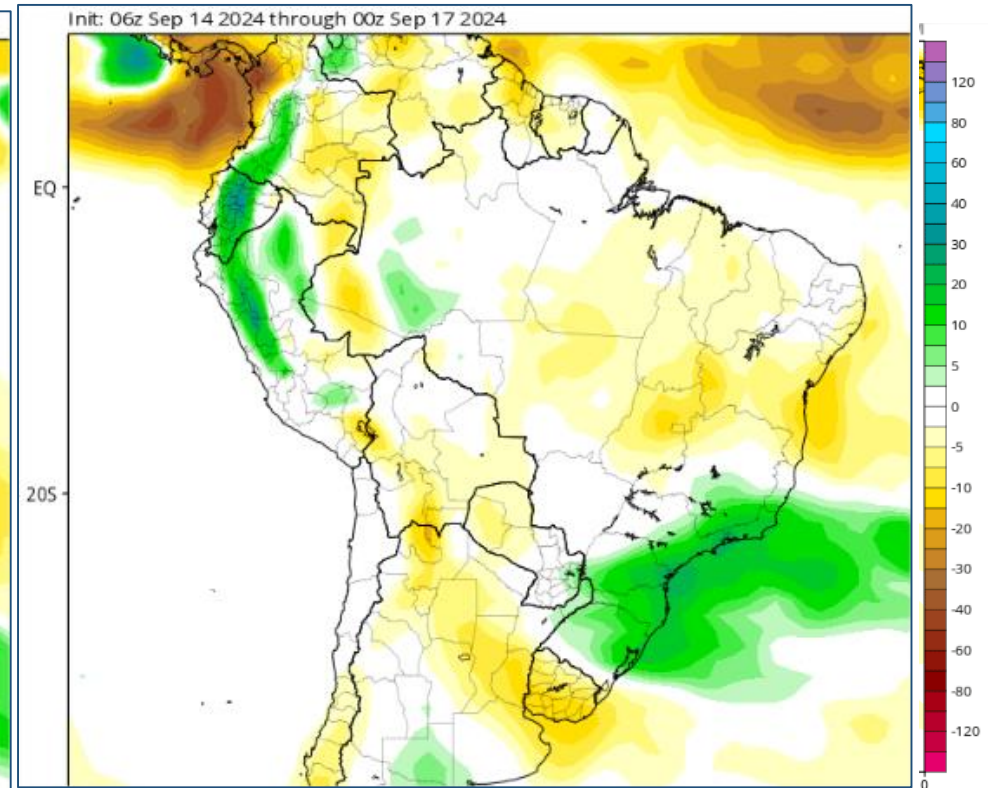
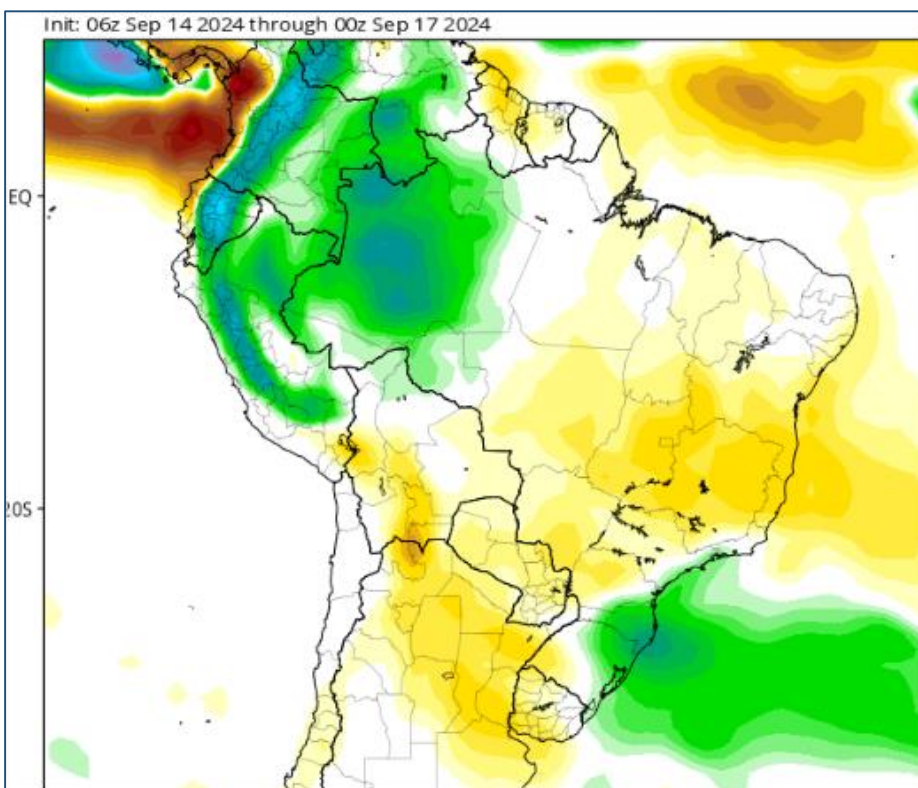


MODELO GEFS

Tendência 3a e 4a semanas

30 Set- 07 Out

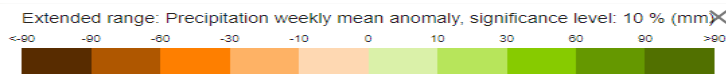
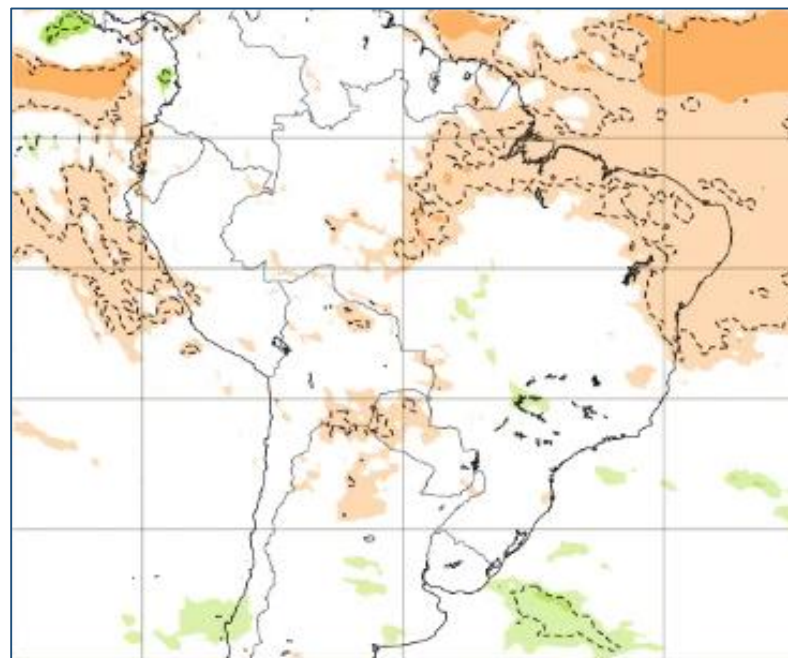
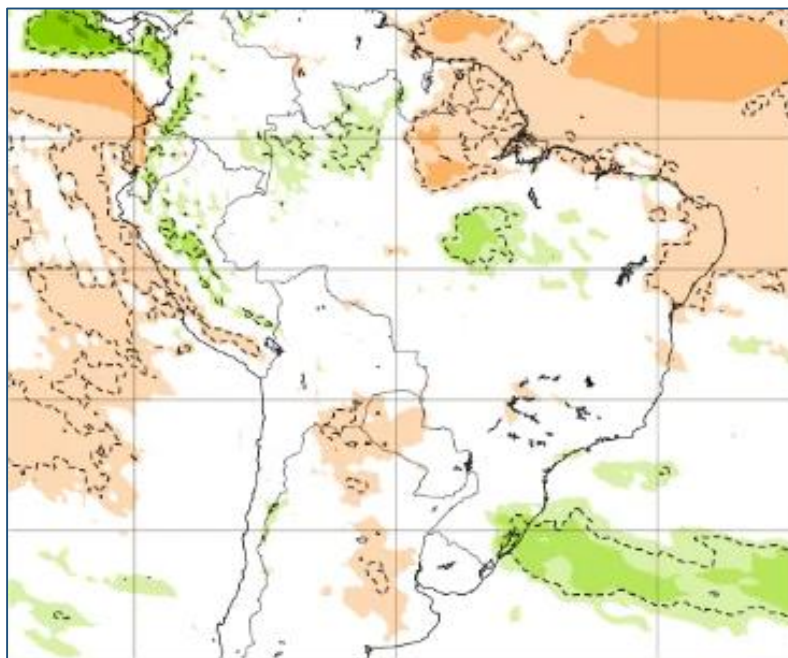
07-13 Out



Tendência para 3^a e 4^a semanas

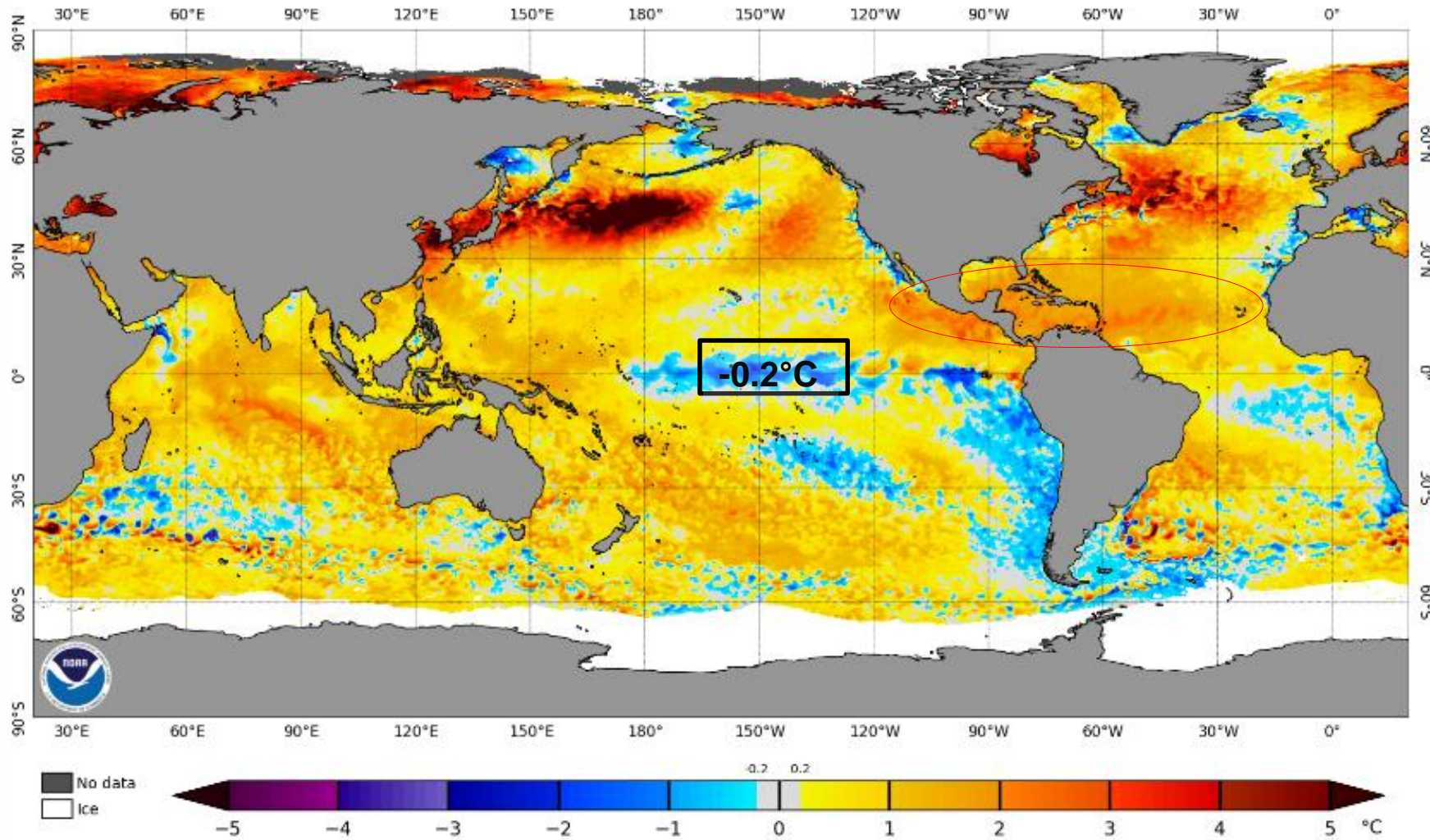
30 Set- 07 Out

07-13 Out



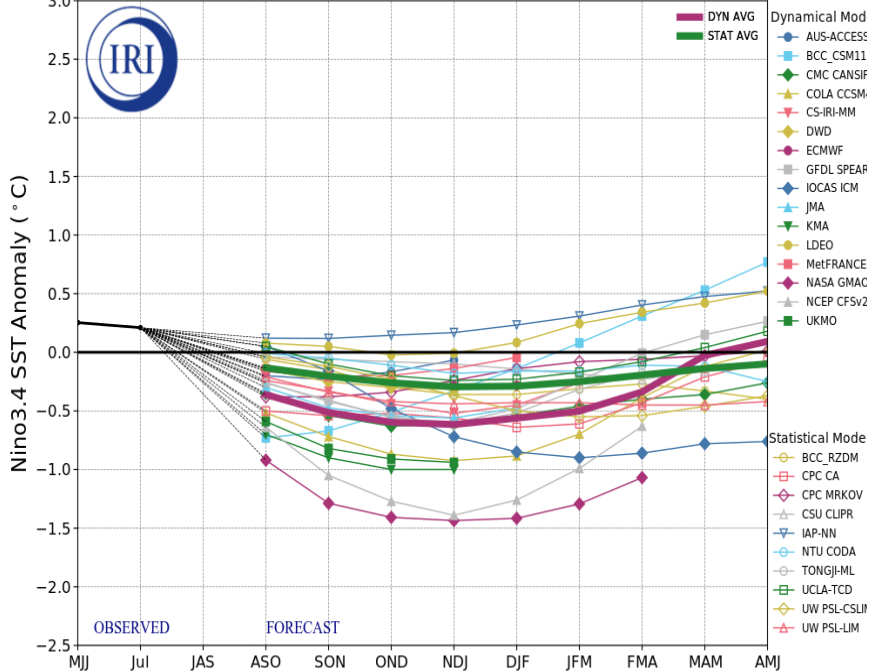
Status Atual: **La Niña Watch**

NOAA Coral Reef Watch Daily 5km SST Anomalies (v3.1) 16 Sep 2024

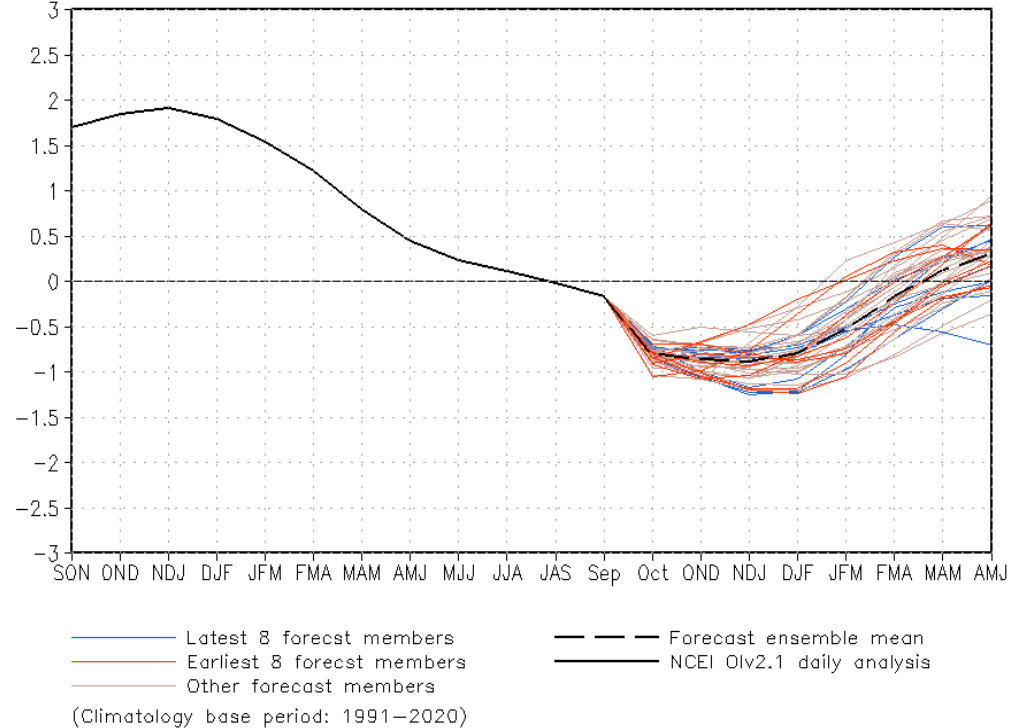


Previsão do “ENSO”

Model Predictions of ENSO from Aug 2024



CFSv2 forecast Nino3.4 SST anomalies (K) (PDF corrected)

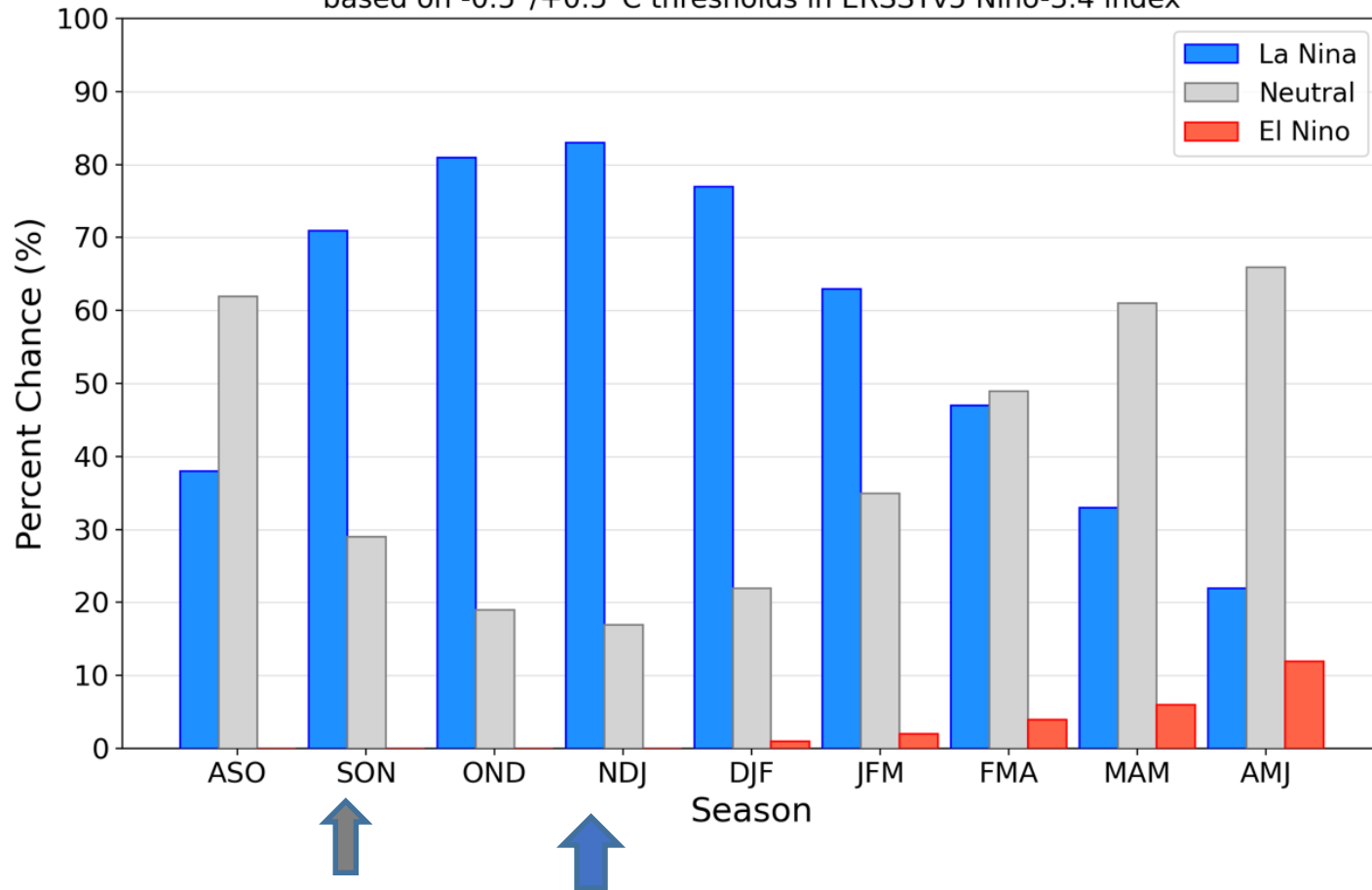


Atualizado 16 de setembro

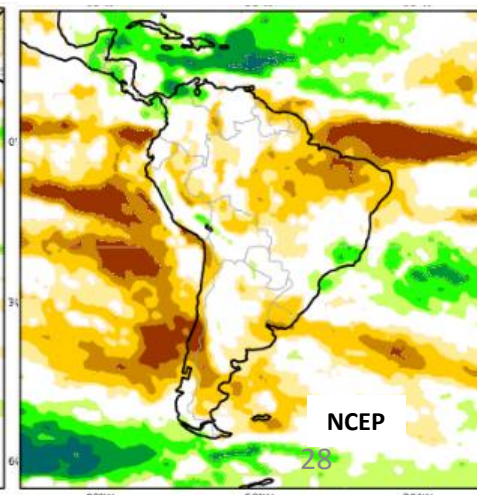
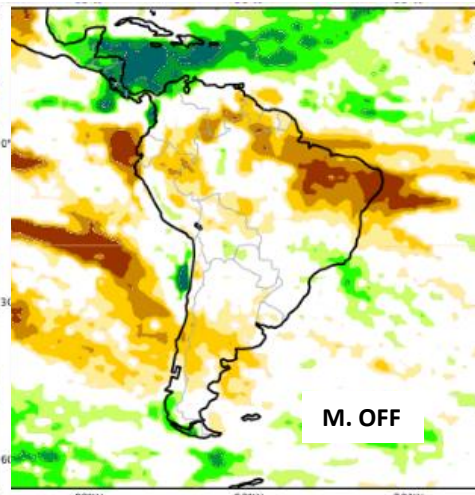
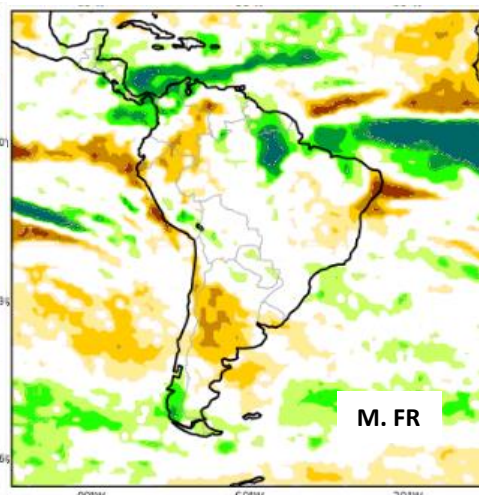
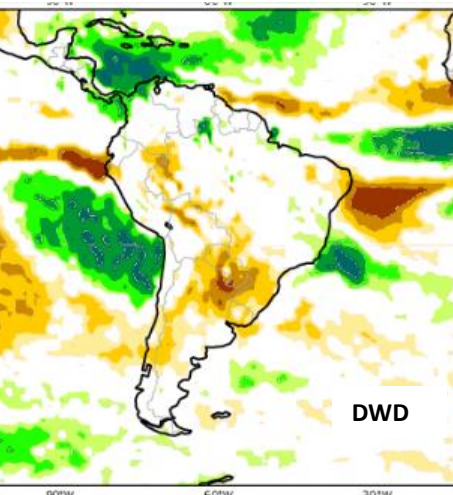
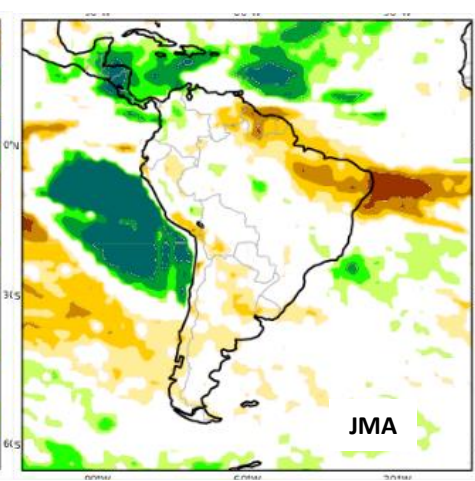
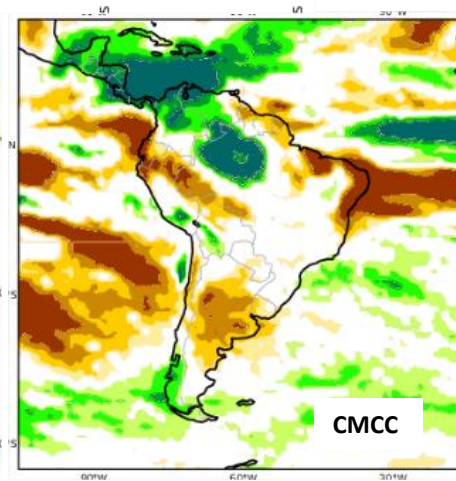
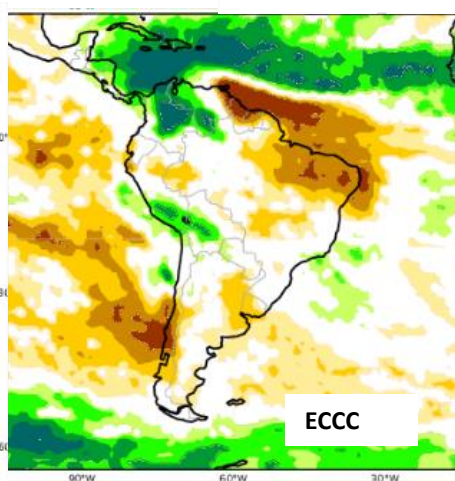
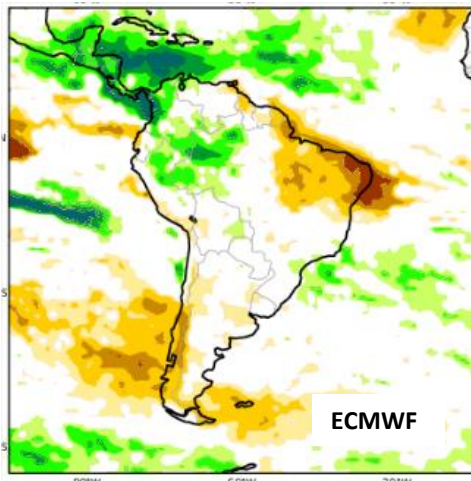
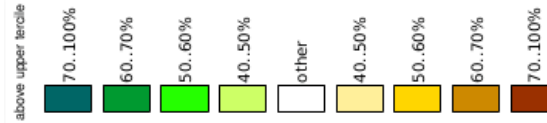
Previsão do “ENSO”

Official NOAA CPC ENSO Probabilities (issued September 2024)

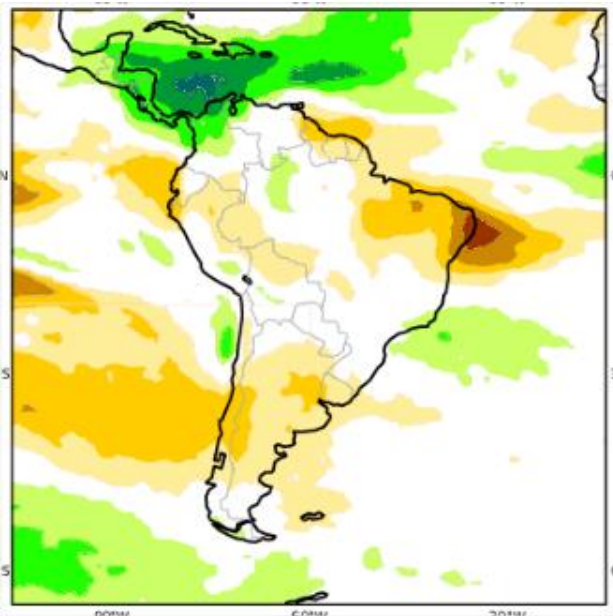
based on $-0.5^{\circ}/+0.5^{\circ}\text{C}$ thresholds in ERSSTv5 Niño-3.4 index



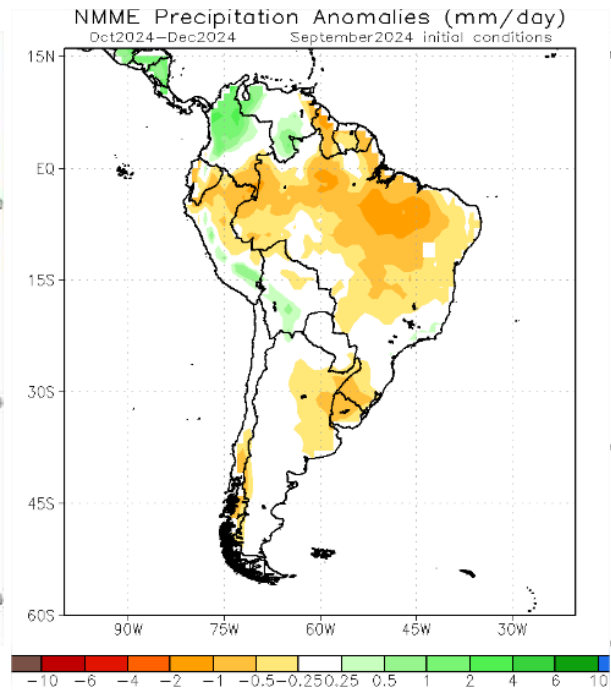
Previsão Sazonal de Chuva OND



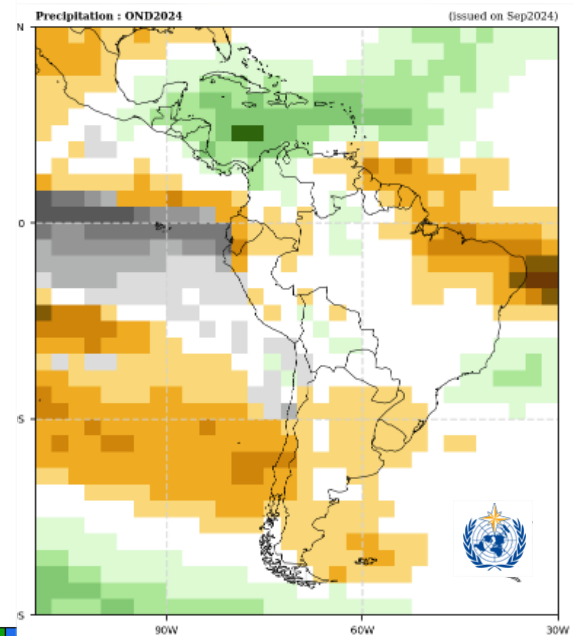
Previsão Sazonal de Chuva Multi-Modelo para OND



Modelos Europeus



Modelos Americanos



Modelos da Organização Meteorológica Mundial