



CEMADEN

**Centro Nacional de Monitoramento e
Alertas de Desastres Naturais**

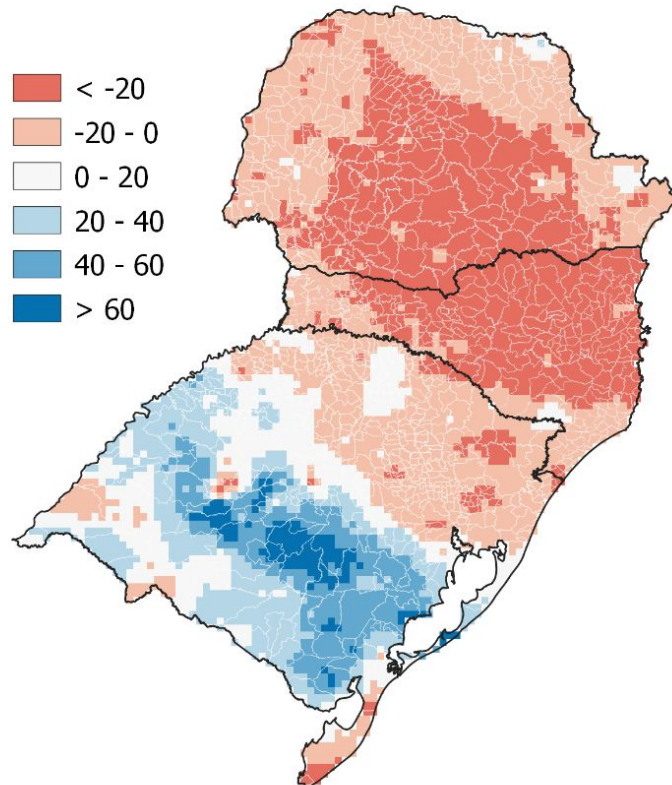
Sala de Crise da Região Sul

14 de Agosto
2024

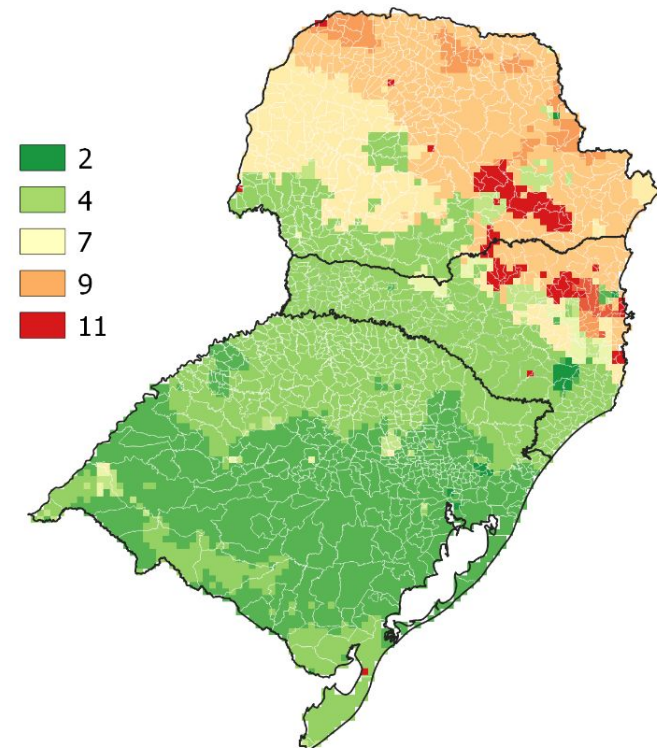


AGOSTO (A TÉ 11) 2024

ANOMALIA

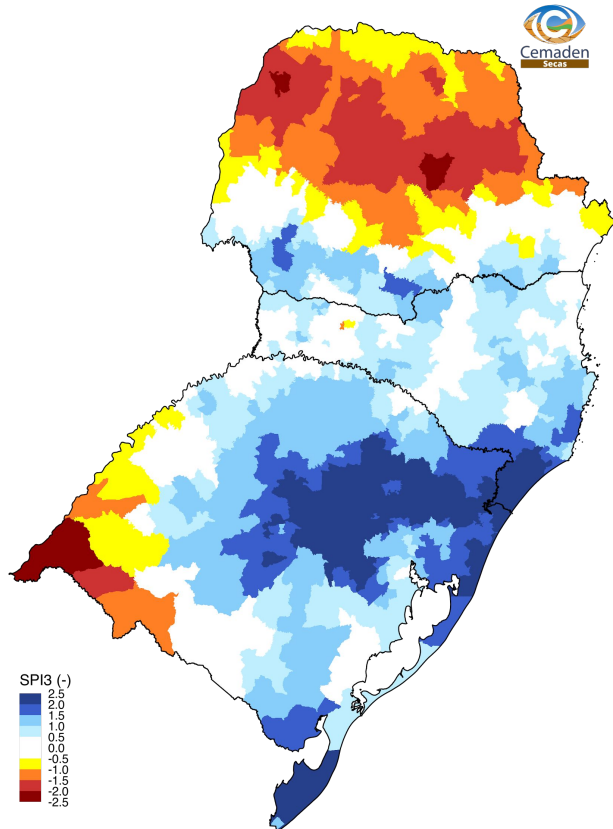


DIAS CONSECUTIVOS SEM CHUVA



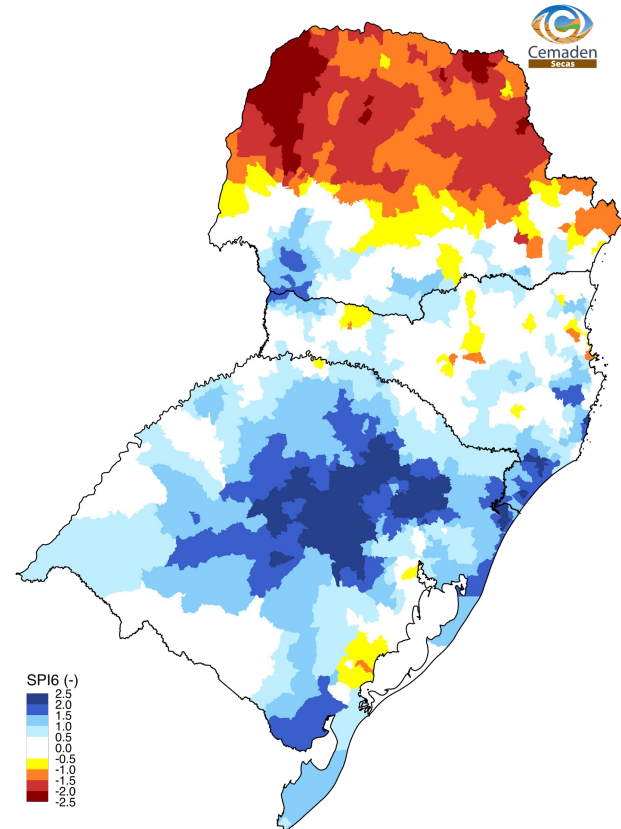
SPI: JULHO 2024

SPI 03



Julho 2024
Índice Padronizado de Precipitação (SPI, 3 meses)
Fonte: Cemaden/MCTI.

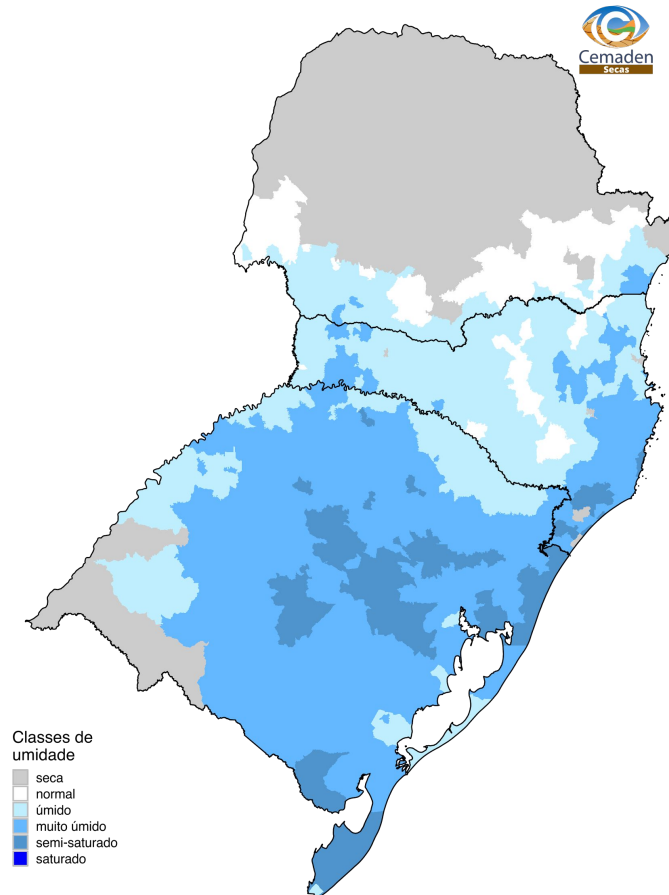
SPI 06



Julho 2024
Índice Padronizado de Precipitação (SPI, 6 meses)
Fonte: Cemaden/MCTI.

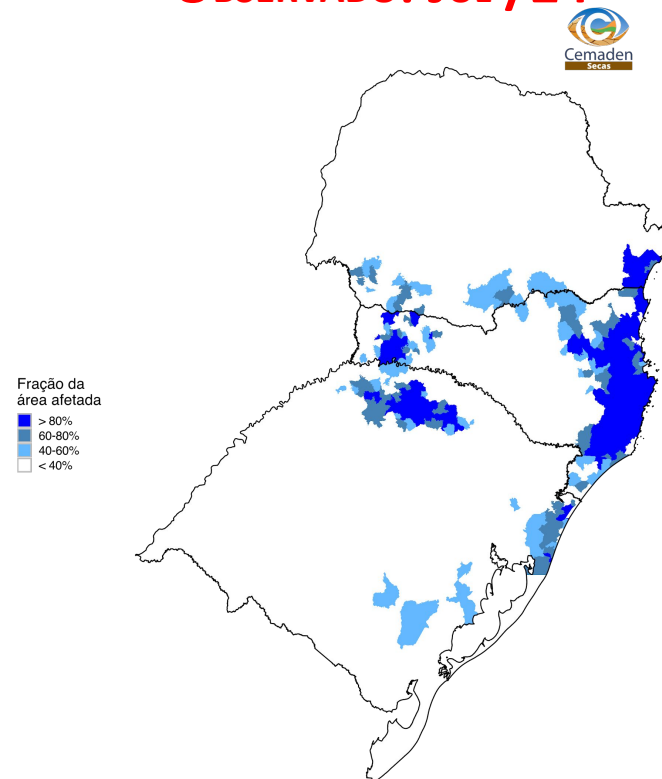
IARA (SPI, SM, VHI)

OBSERVADO : JULHO



ESTIMATIVA DE ÁREAS DE PASTAGENS E AGRÍCOLAS AFETADAS PELO EXCESSO DE CHUVA

OBSERVADO: JUL /24



Julho 2024
Fração da área agroprodutiva afetada pelo excesso de água - IARA
Fonte: Cemaden/MCTI.

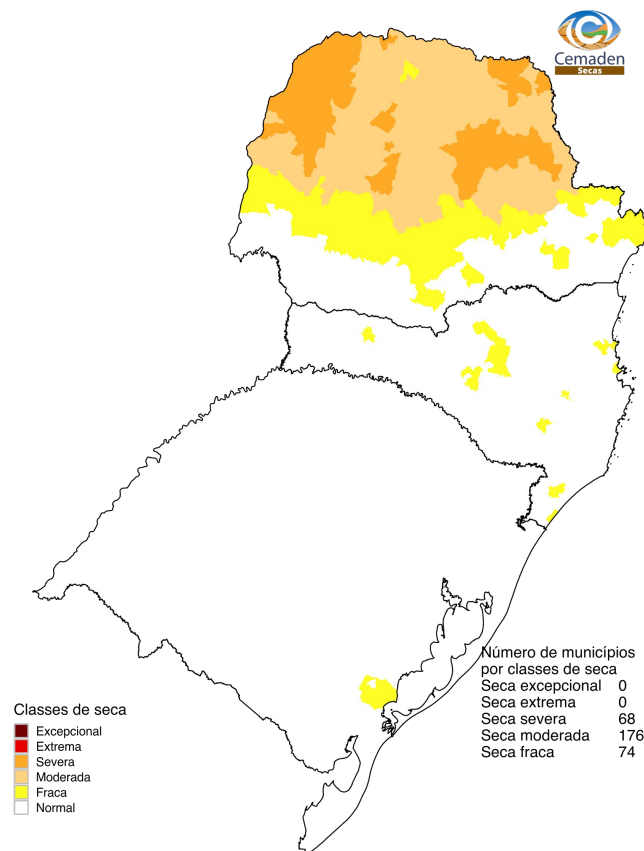
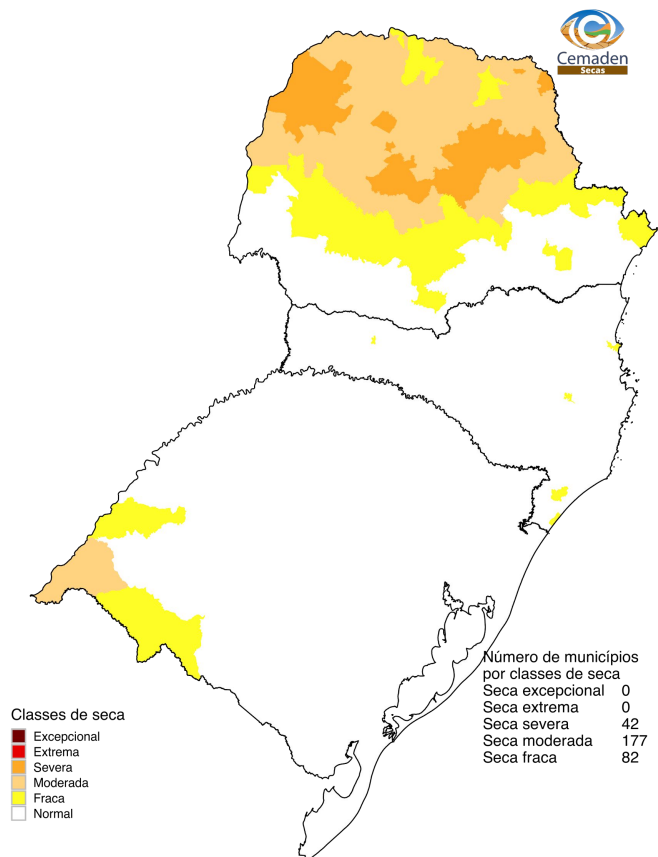
Impacto: Muito úmido à saturado.

ÍNDICE INTEGRADO DE SECA - IIS

(SPI3 E 6 + VHI + AUS): JULHO /2024

IIS 3 MESES

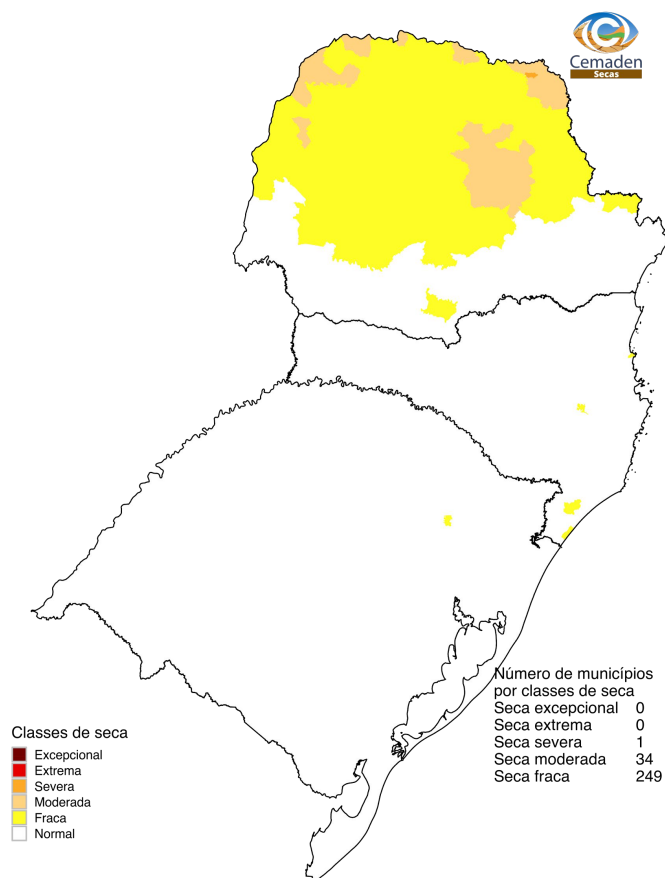
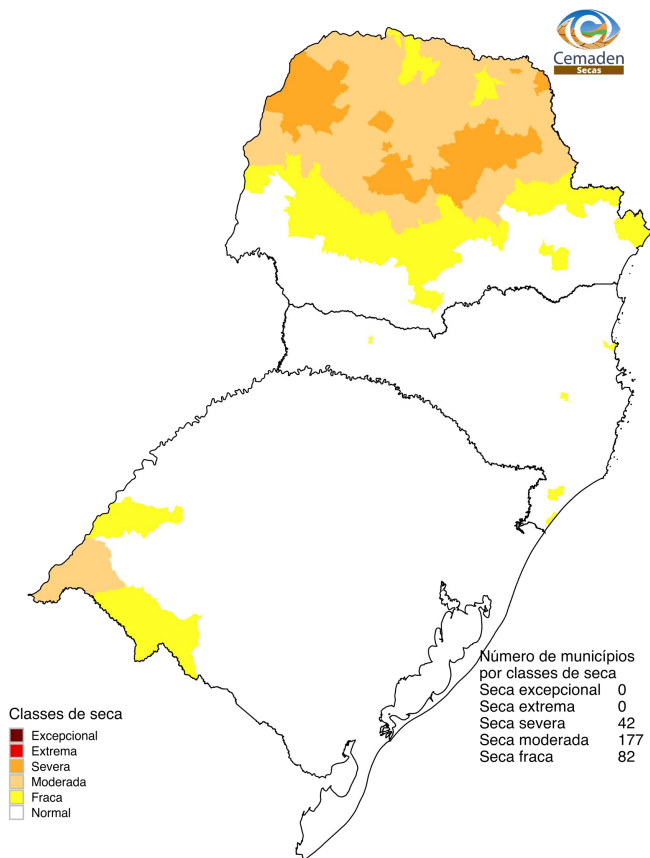
IIS 6 MESES



PREVISÃO - IIS: AGOSTO/2024

JULHO/24

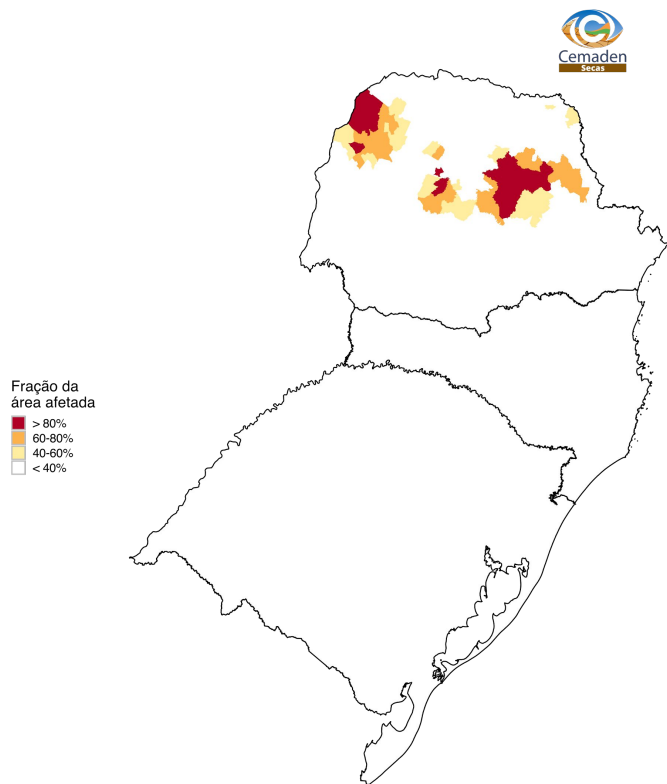
AGOSTO/24 (PREVISTO)



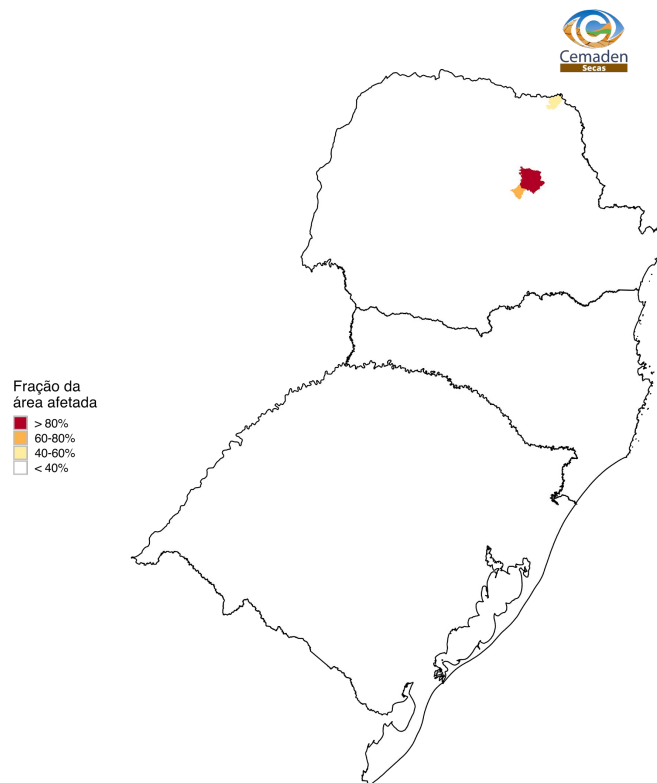
ESTIMATIVA DE ÁREAS DE PASTAGENS E AGRÍCOLAS AFETADAS PELA SECA

OBSERVADO: JUL /24

PREVISTO: AGO /24

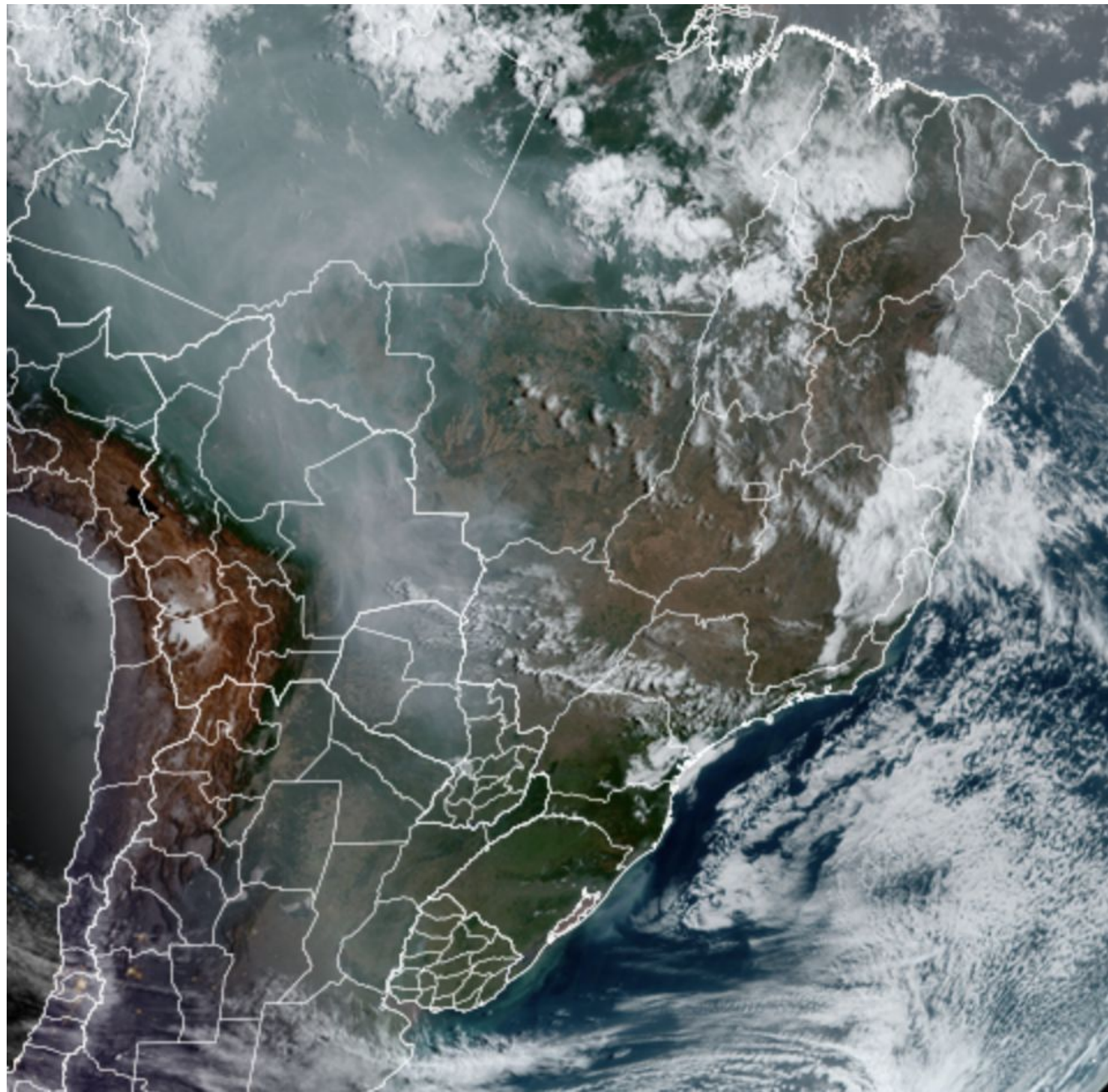


Julho 2024
Fração da área agroprodutiva afetada pela seca
Fonte: Cemaden/MCTI.



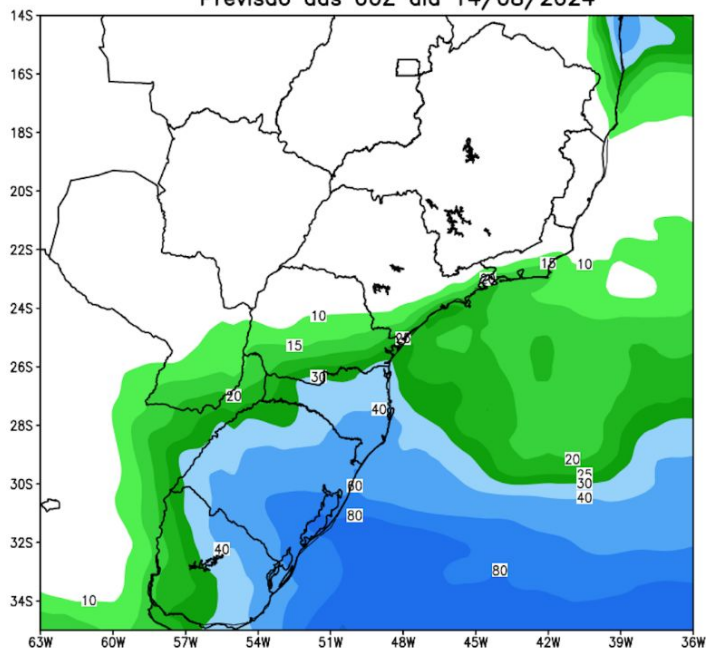
Agosto 2024
Fração da área agroprodutiva afetada pela seca - Previsão
Fonte: Cemaden/MCTI.

Situação meteorológica atual

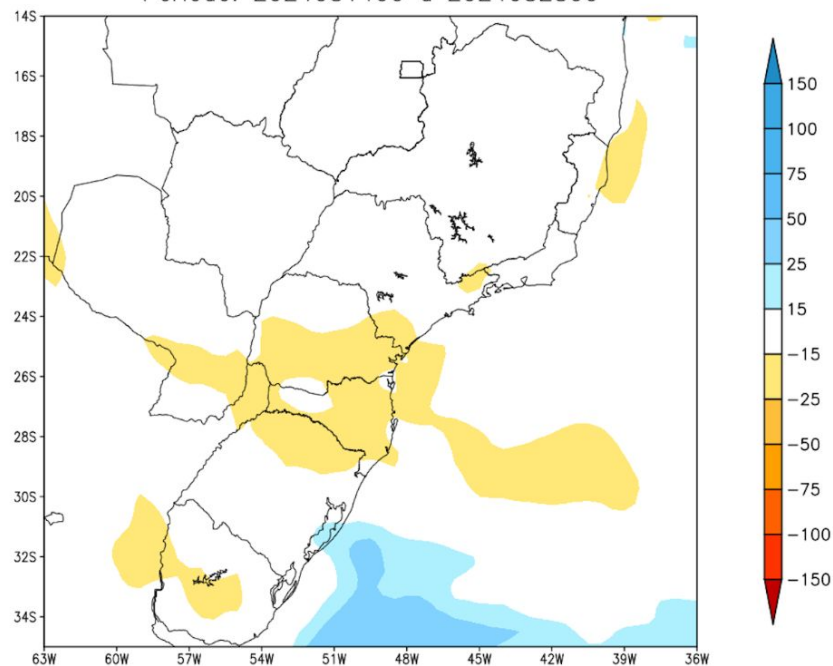


Previsão de chuva próximos 14 dias

GEFS / BRASIL_SUL
Precipitação acumulada 14 dias (mm)
Previsão das 00Z dia 14/08/2024



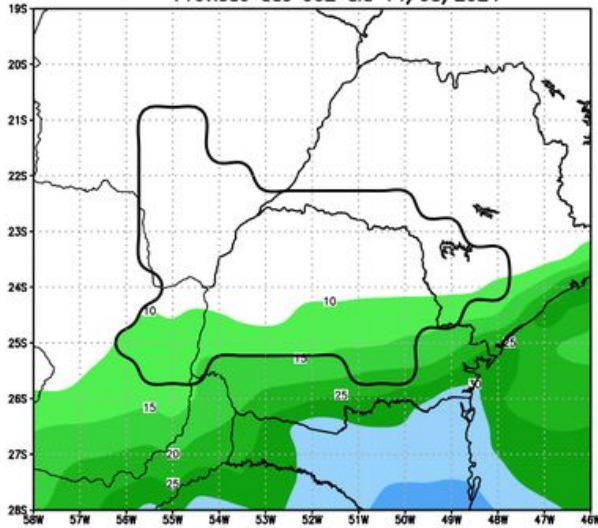
Anomalia de Precipitação BR_SUL (mm)
Período: 2024081400 a 2024082800



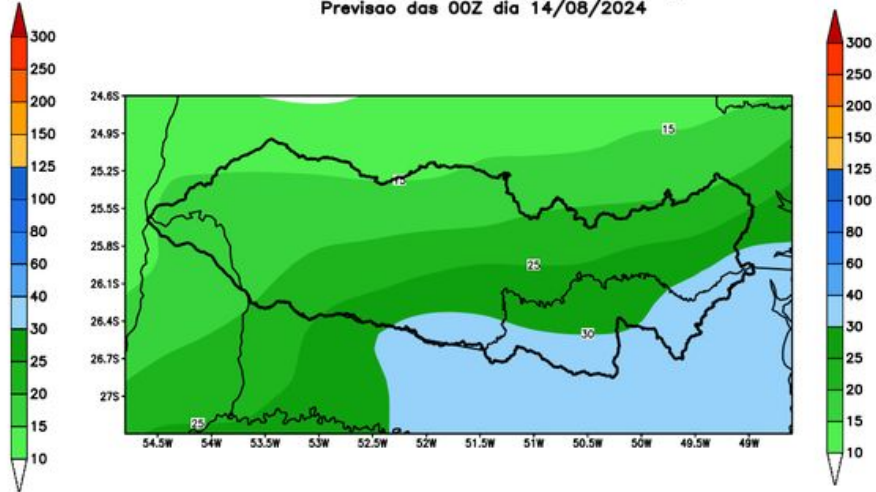
MODELO GEFS

Previsão para as principais bacias

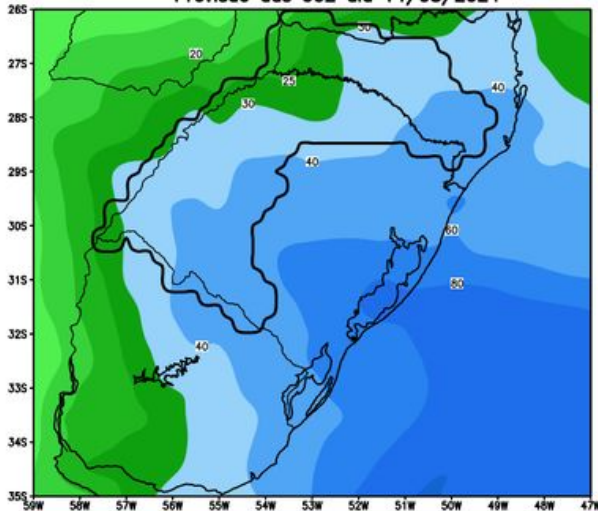
GEFS / Itaipu
Precipitacao acumulada em 14 dias (mm)
Previsao das 00Z dia 14/08/2024



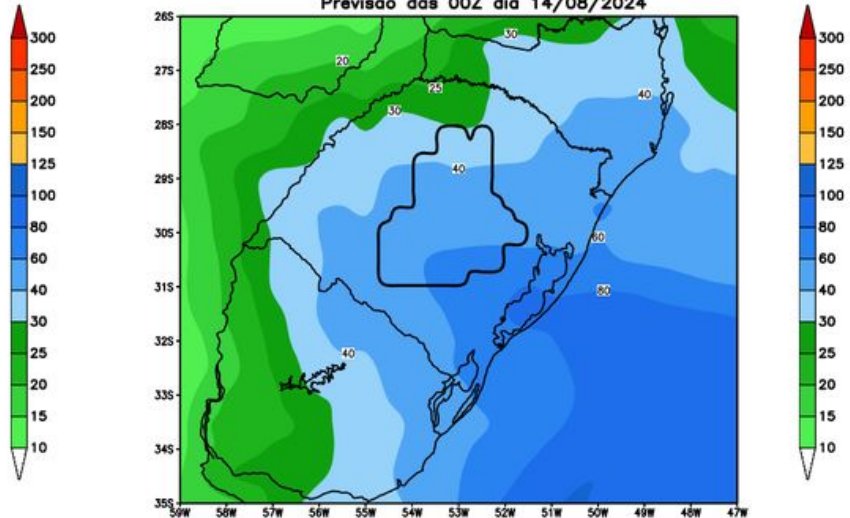
GEFS / Bacia do Rio Iguacu
Precipitacao acumulada em 14 dias (mm)
Previsao das 00Z dia 14/08/2024



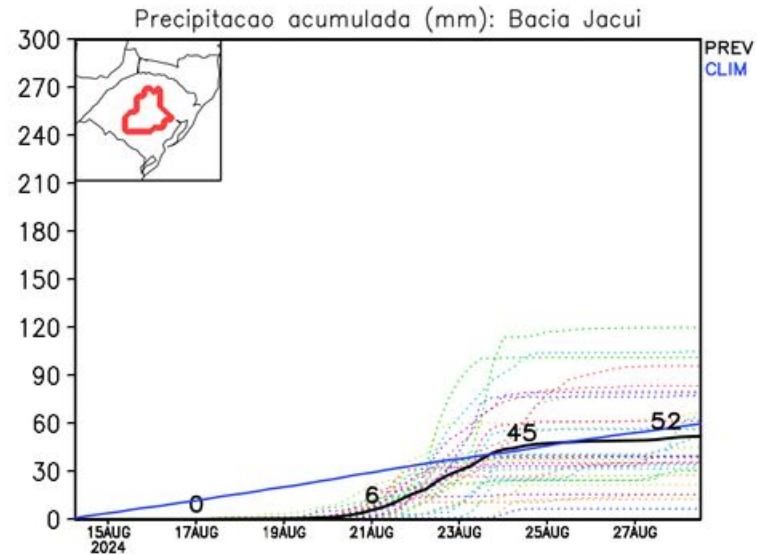
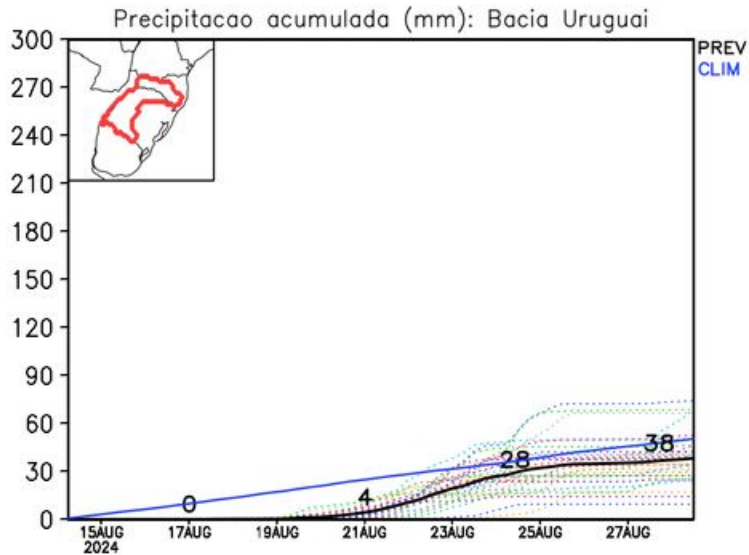
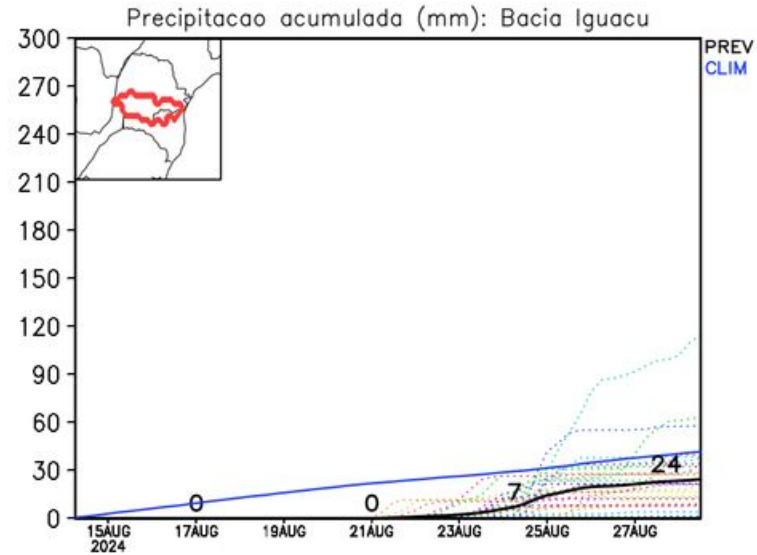
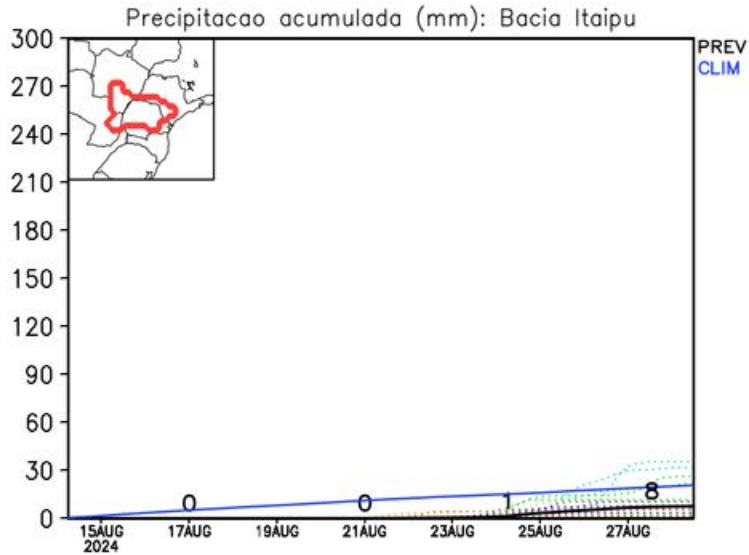
GEFS / Bacia do Rio Uruguai
Precipitacao acumulada em 14 dias (mm)
Previsao das 00Z dia 14/08/2024



GEFS / Bacia do Rio Jacui
Precipitacao acumulada em 14 dias (mm)
Previsao das 00Z dia 14/08/2024

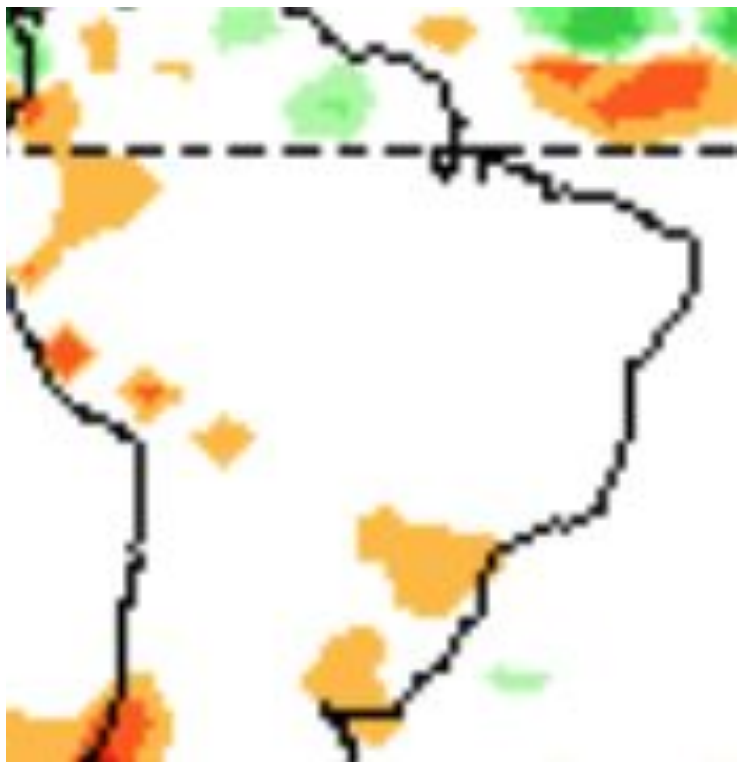


Previsão para as principais bacias

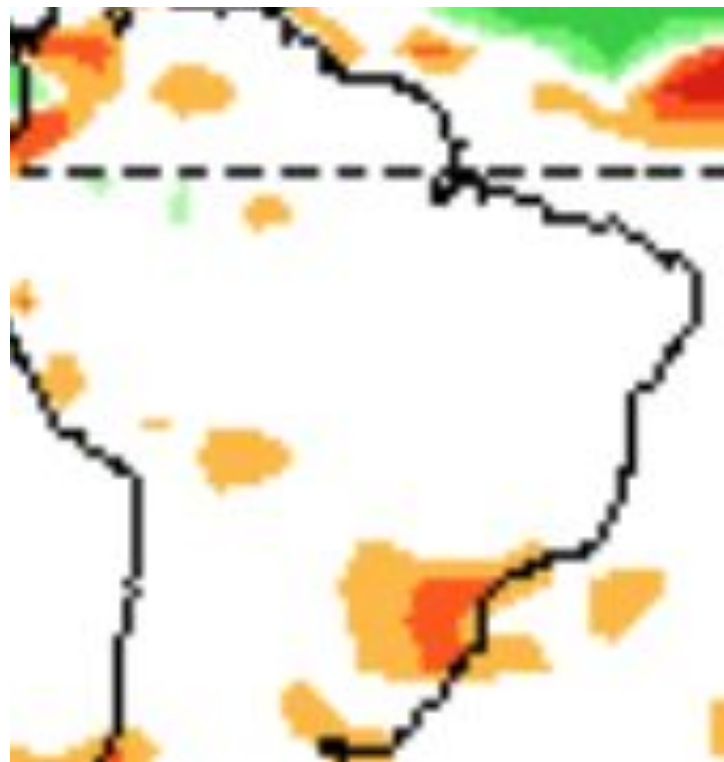


Tendência 3a e 4a semanas

28 Agosto - 03 Setembro



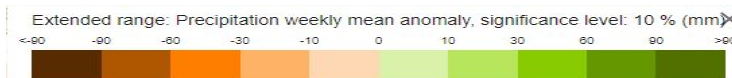
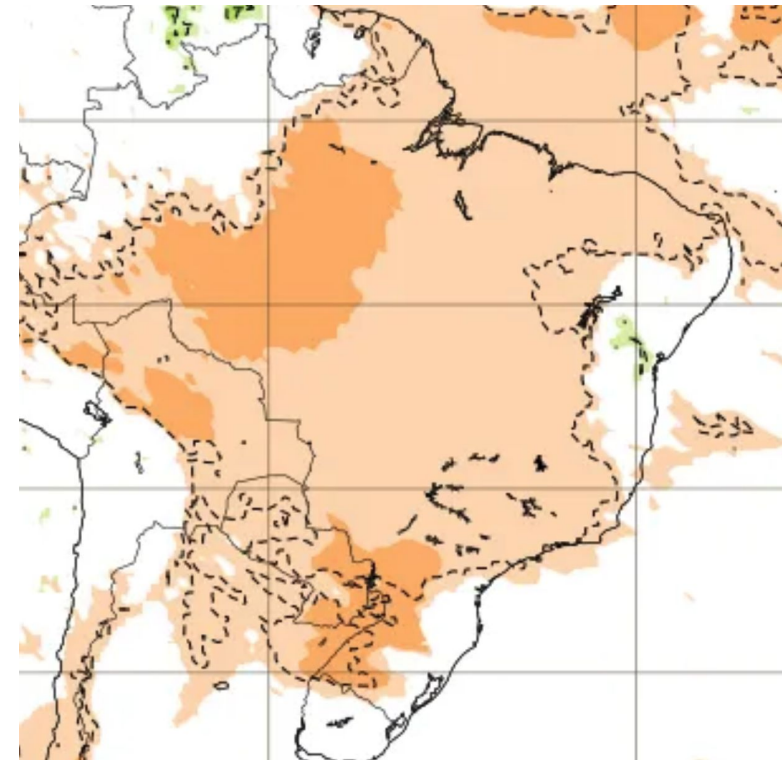
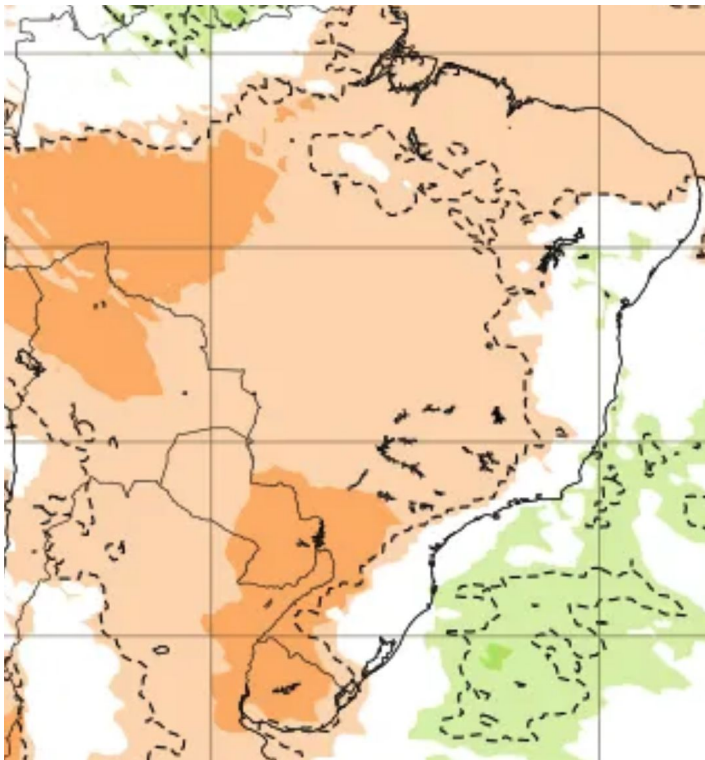
04 -10 Setembro



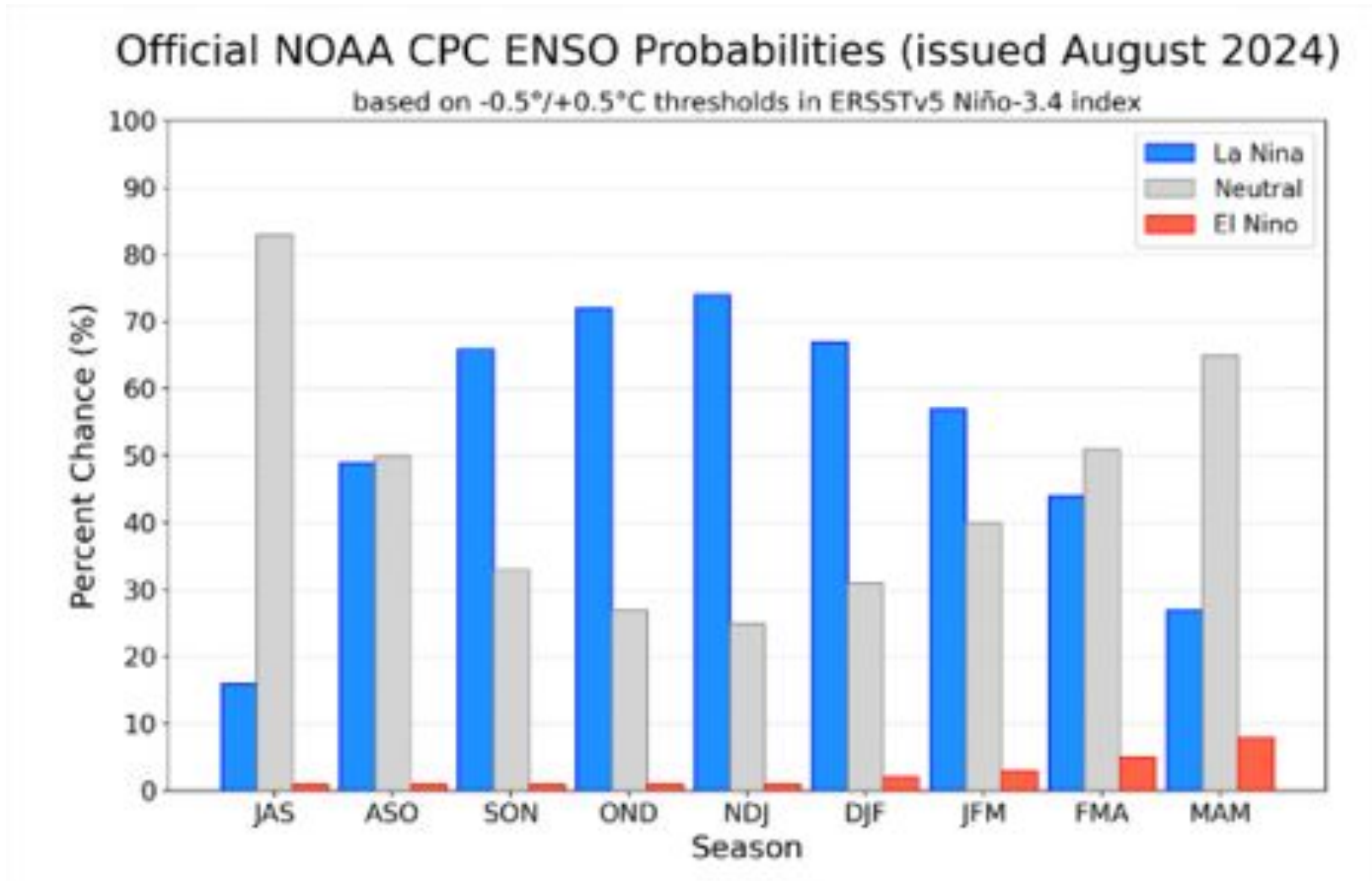
Tendência para 3^a e 4^a semanas

26 Agosto - 01 Setembro

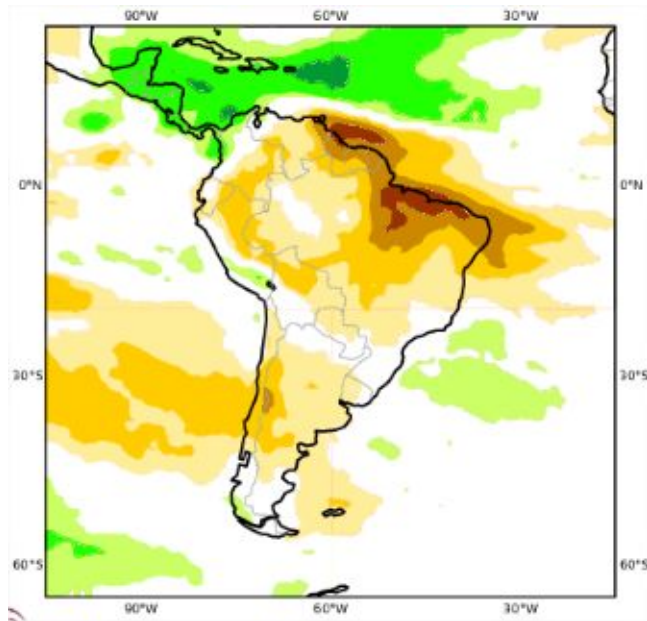
02 - 08 Setembro



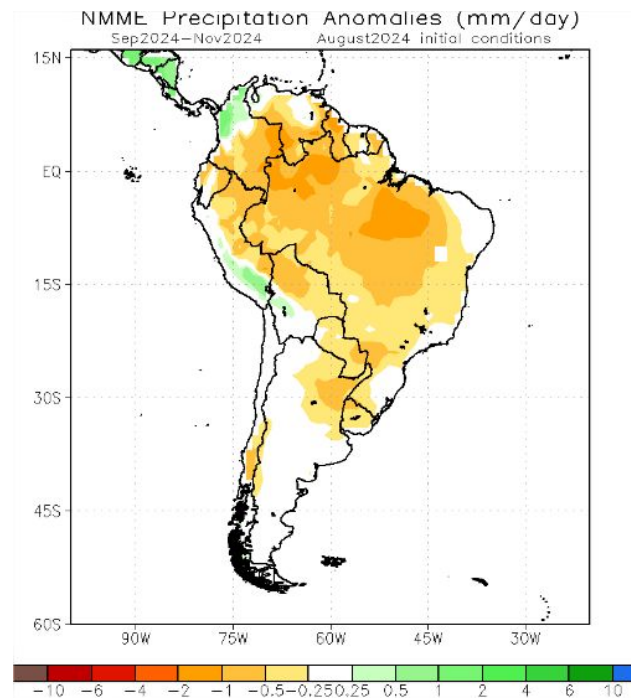
Previsão do “ENSO”



Previsão Sazonal de Chuva Multi-Modelo para SON



Modelos Europeus



Modelos Americanos