

Monitoramento e Previsões de chuva para a Bacia do Rio Parnaíba

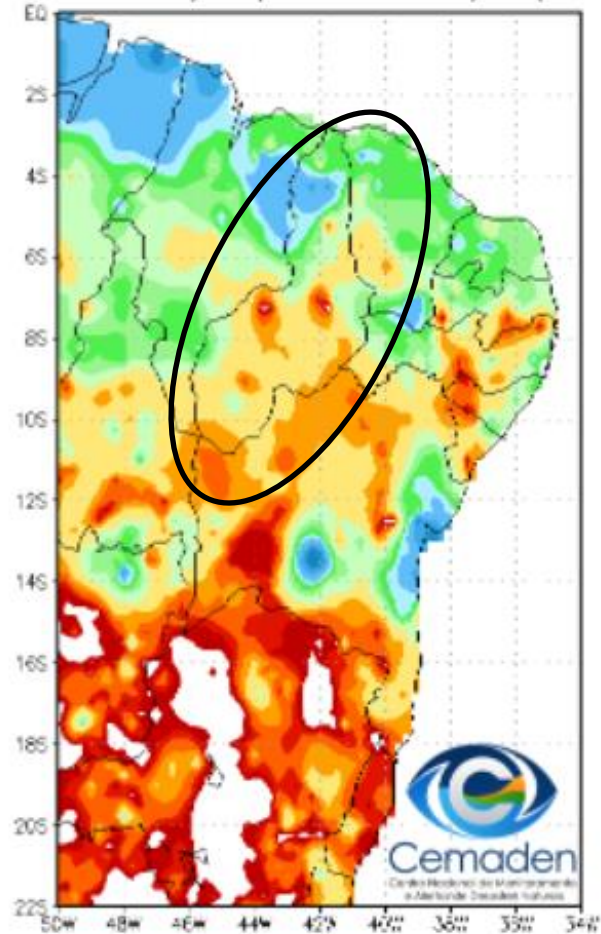


Cemaden
Centro Nacional de Monitoramento
e Alertas de Desastres Naturais

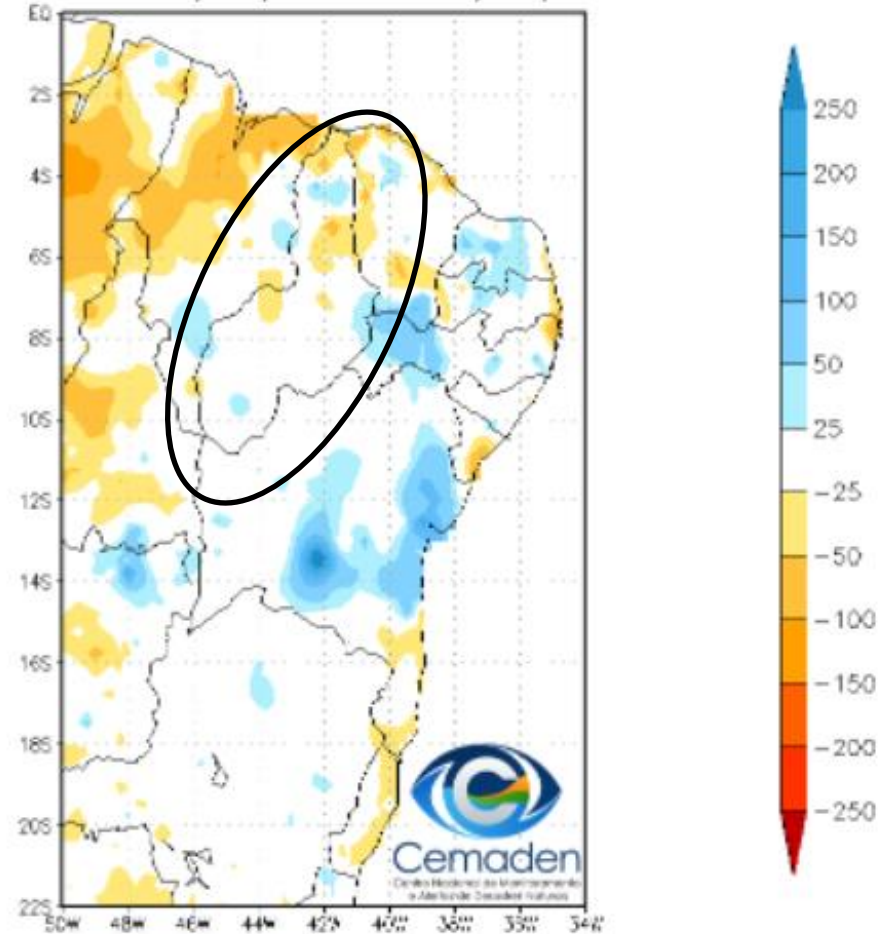
27 de Abril de 2022

Precipitação acumulada no últimos 15 dias

Precipitação Acumulada (mm)
Período: 11/04/2022 a 26/04/2022

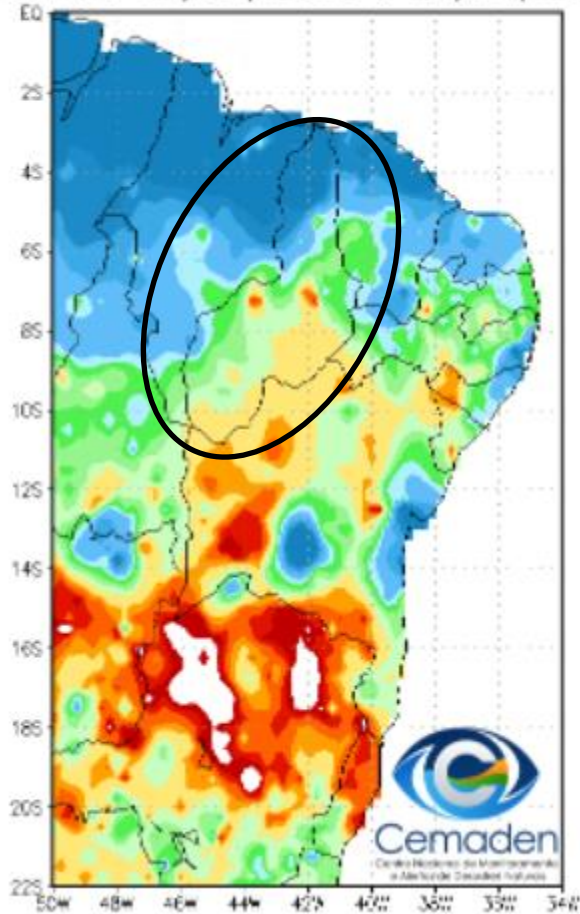


Anomalia de Precipitação (mm)
Período: 11/04/2022 a 26/04/2022

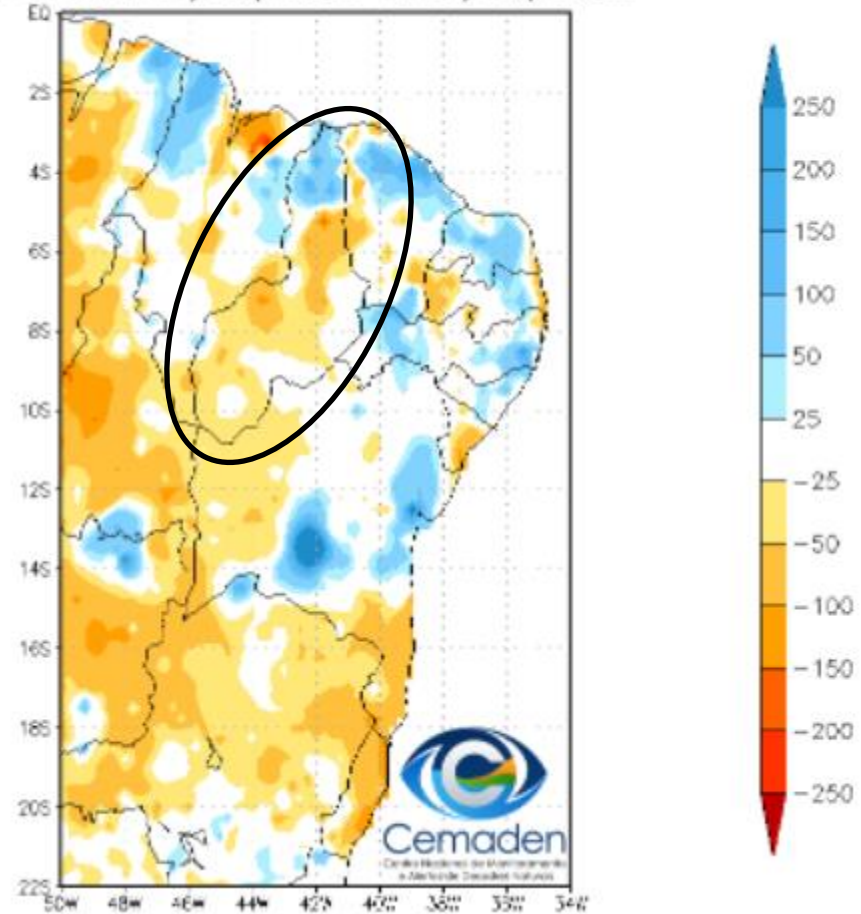


Precipitação acumulada nos últimos 30 dias

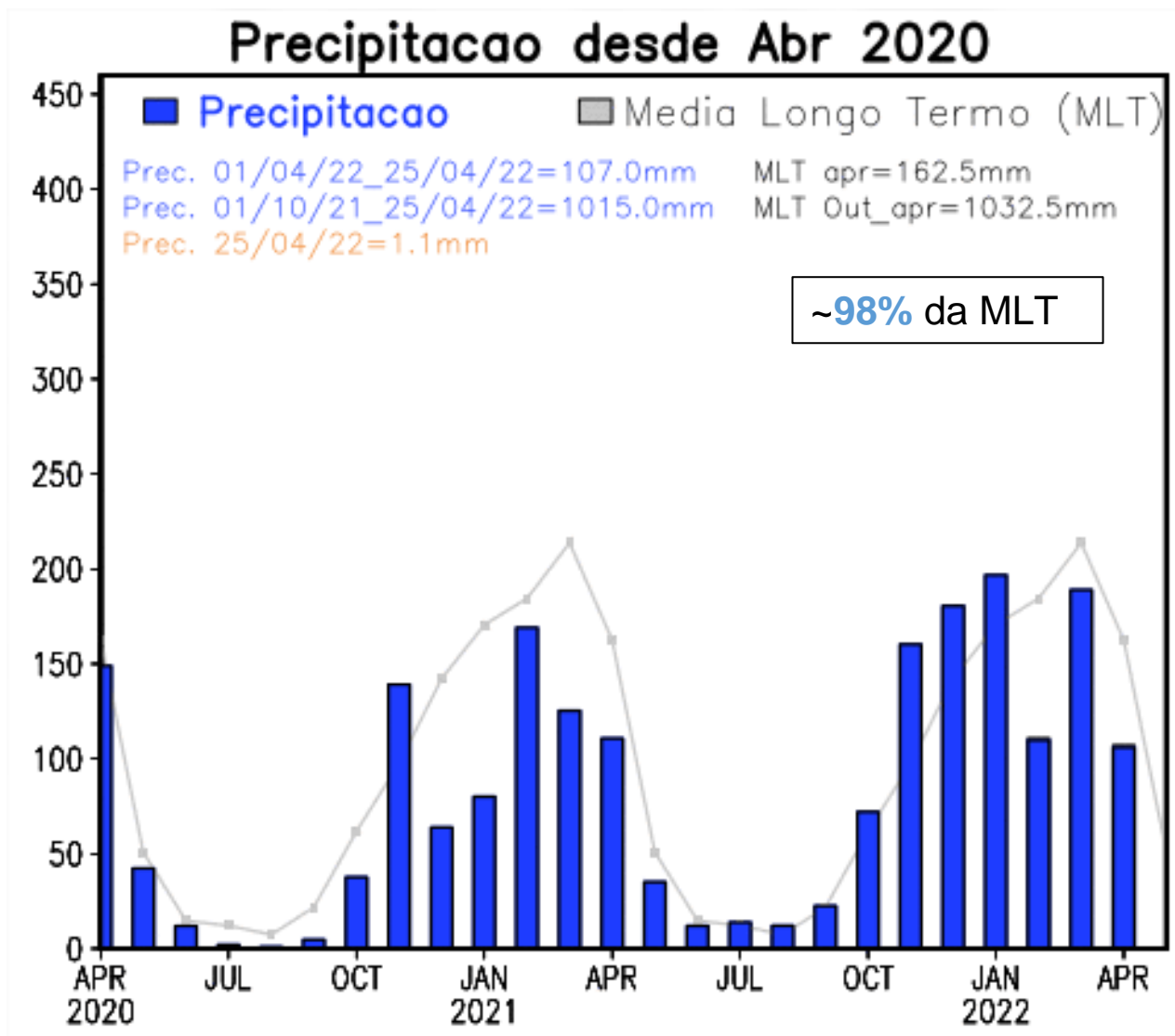
Precipitação Acumulada (mm)
Período: 27/03/2022 a 26/04/2022



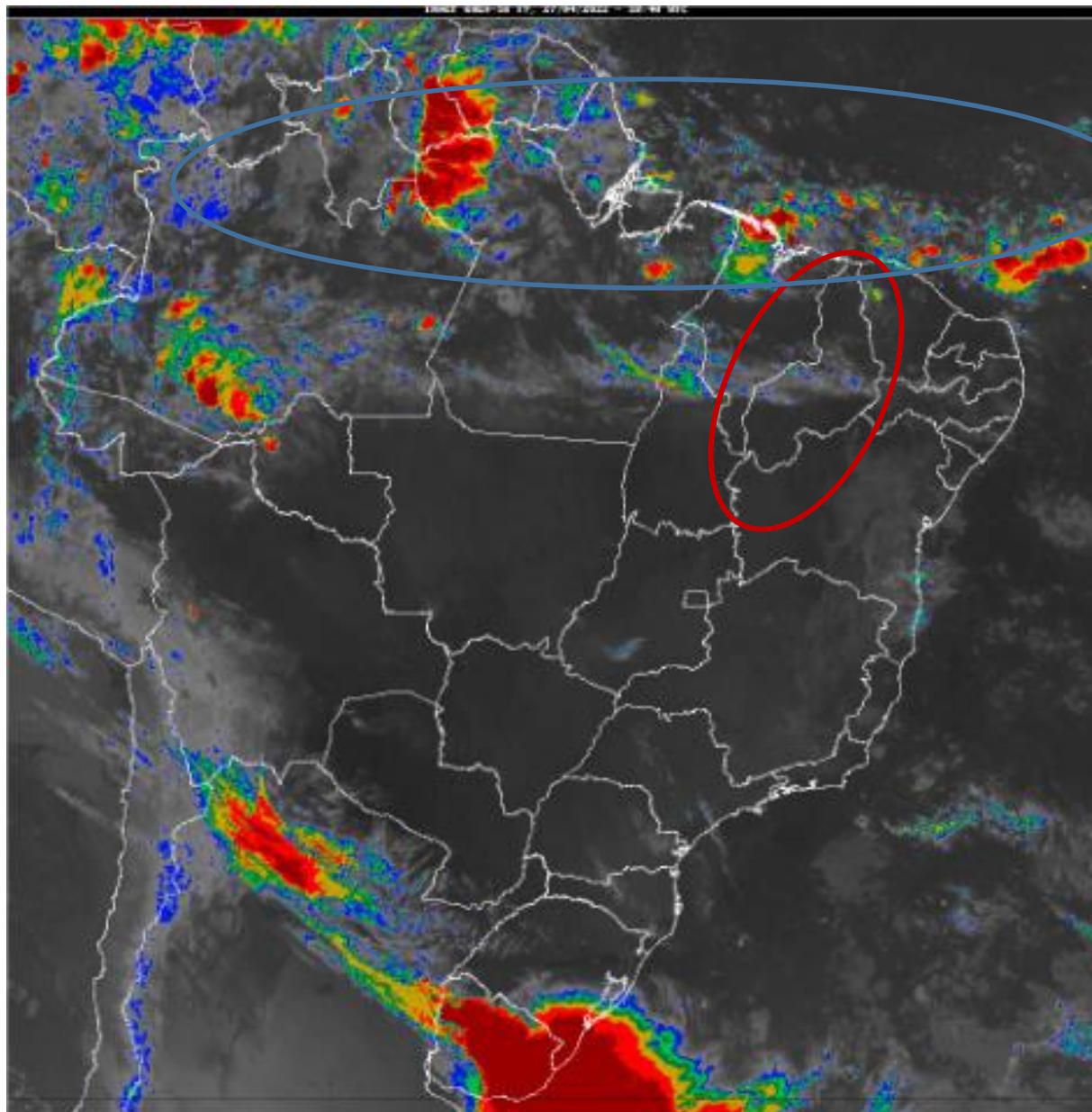
Anomalia de Precipitação (mm)
Período: 27/03/2022 a 26/04/2022



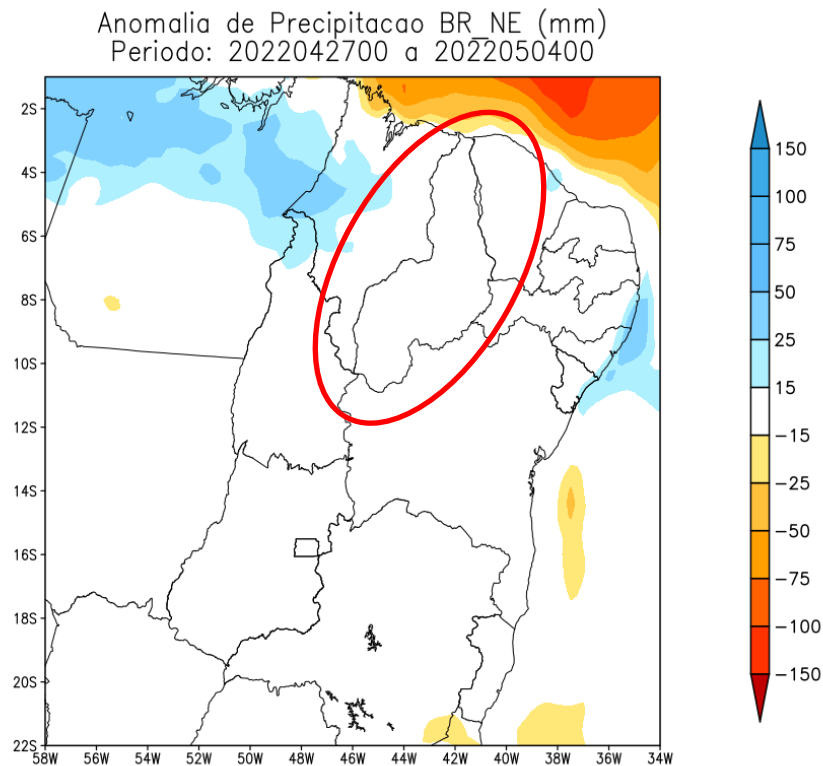
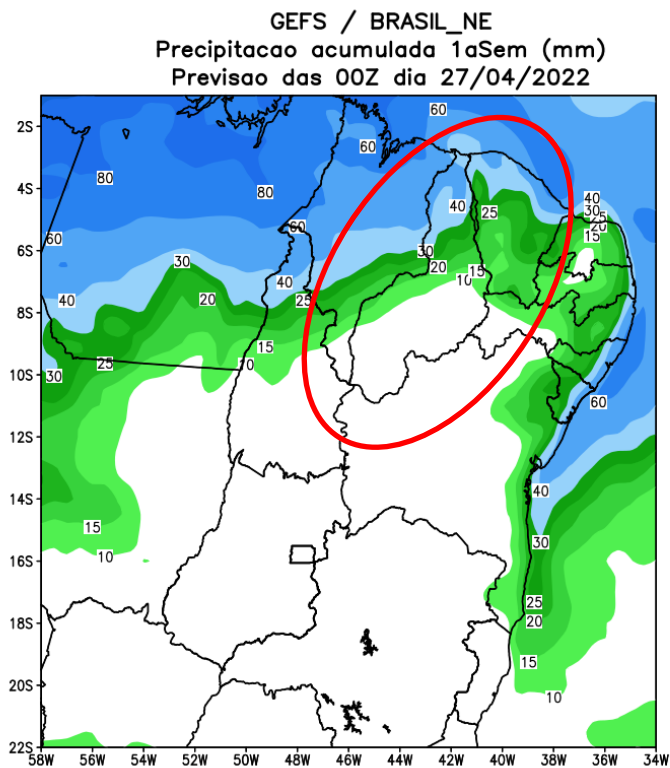
Evolução temporal da precipitação



Situação Meteorológica Atual



Previsão de chuva para os próximos 7 dias



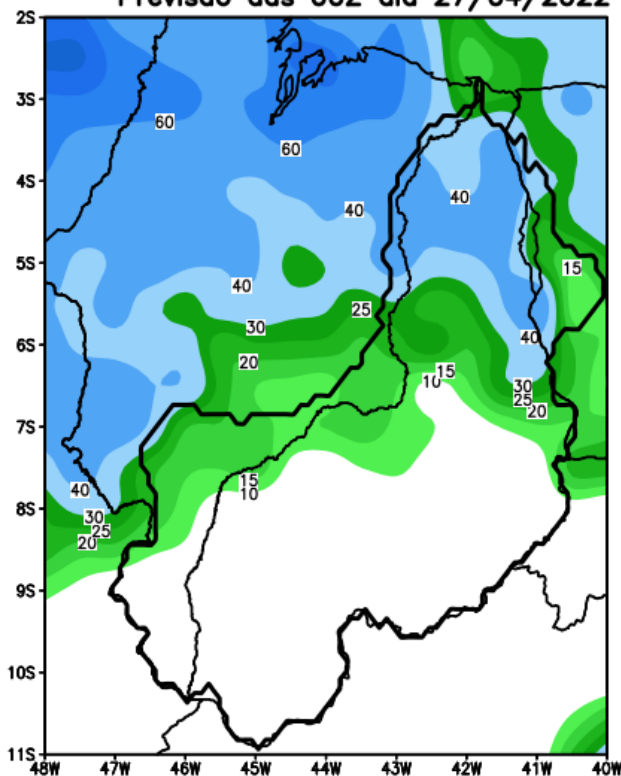
Fonte: GFS/NOAA

Bacia do rio Parnaíba

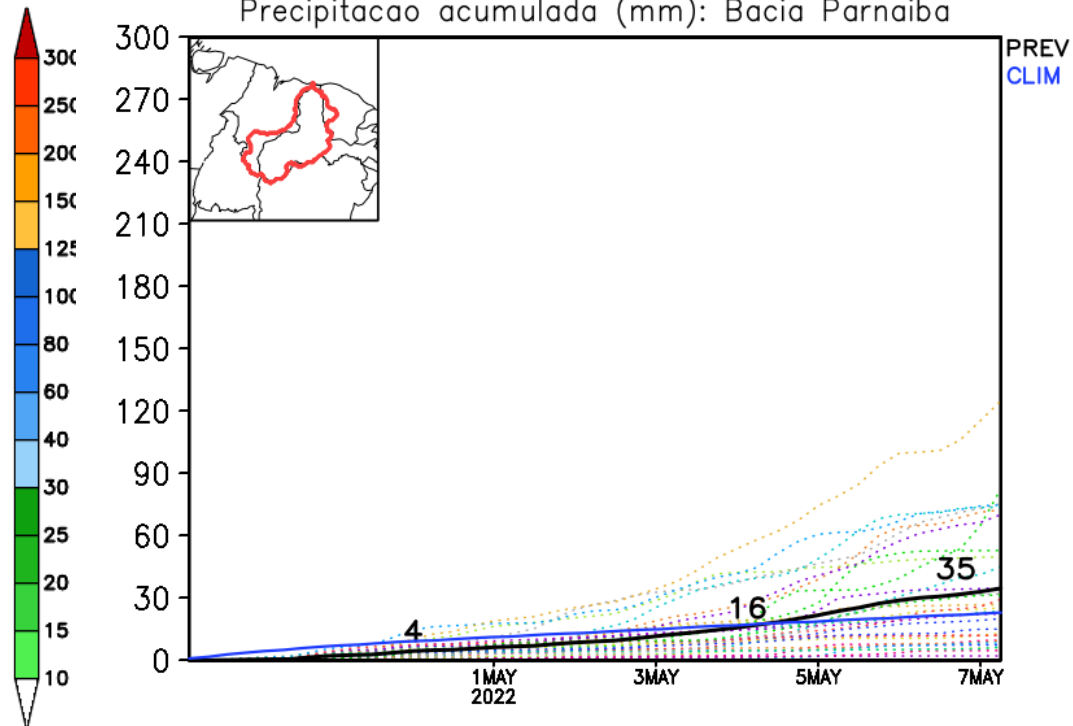
GEFS_BC / Bacia do Rio Parnaíba

Prec. acumulada com correcao de vies em 7 dias (mm)

Previsao das 00Z dia 27/04/2022

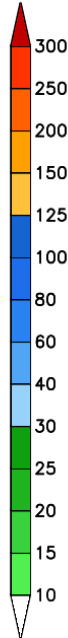
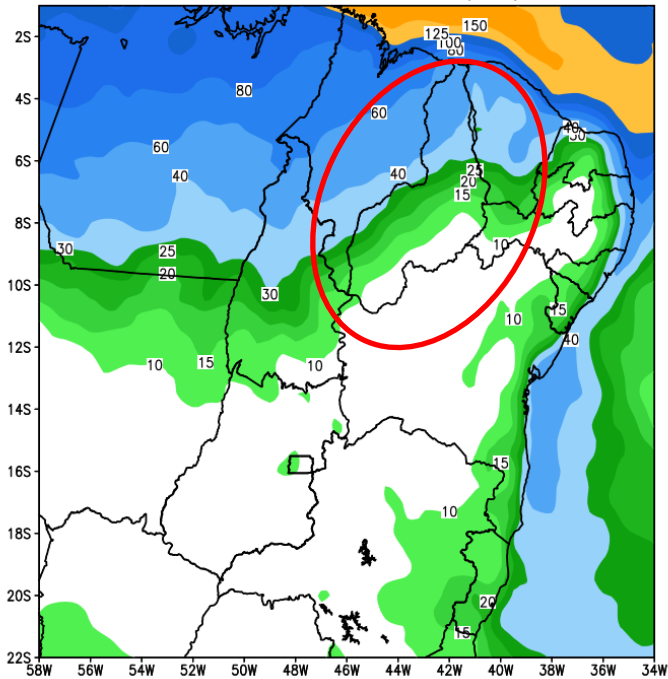


Precipitacao acumulada (mm): Bacia Parnaiba

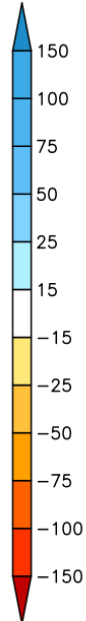
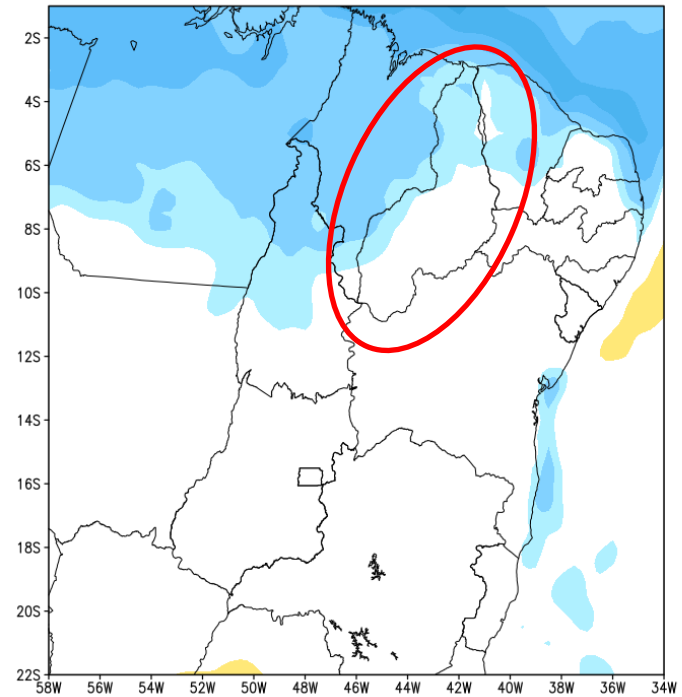


Tendência para a 2ª Semana

GEFS / BRASIL_NE
Precipitacao acumulada 2aSem (mm)
Previsao das 00Z dia 27/04/2022

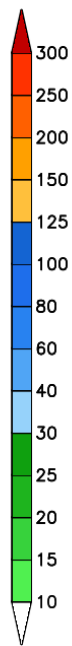
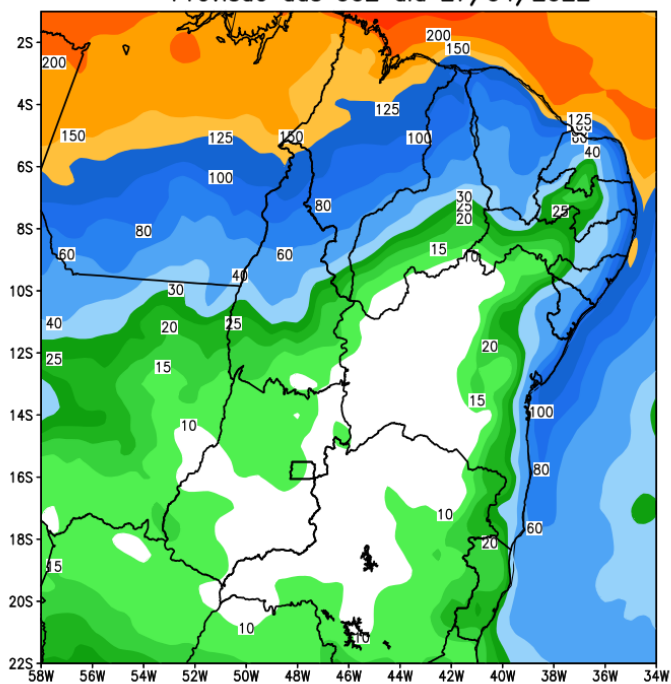


Anomalia de Precipitacao BR_NE (mm)
Periodo: 2022050500 a 2022051100

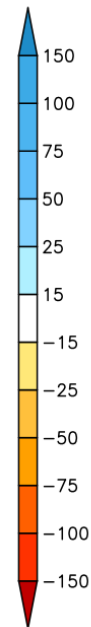
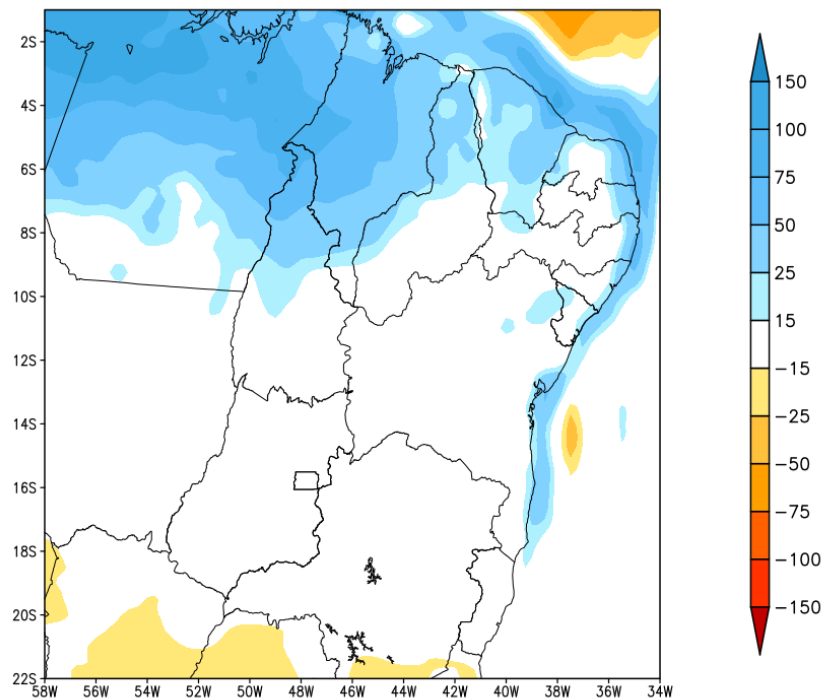


Tendência para as duas próximas semanas

GEFS / BRASIL_NE
Precipitacao acumulada 14dias (mm)
Previsao das 00Z dia 27/04/2022



Anomalia de Precipitacao BR NE (mm)
Periodo: 2022042700 a 2022051100

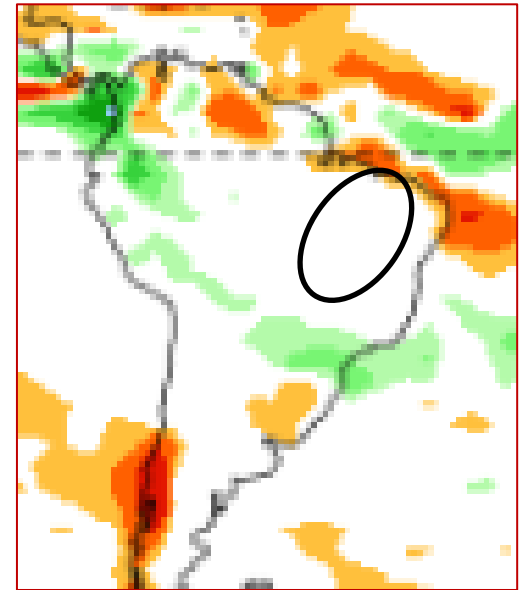
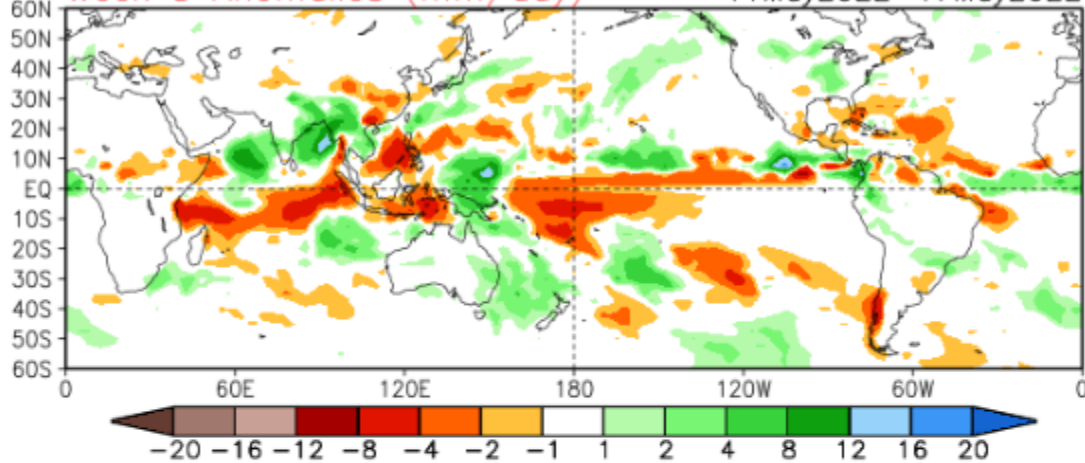


Tendência para 3ª e 4ª semanas

16 Member Ensemble Mean Forecast from 26Apr2022

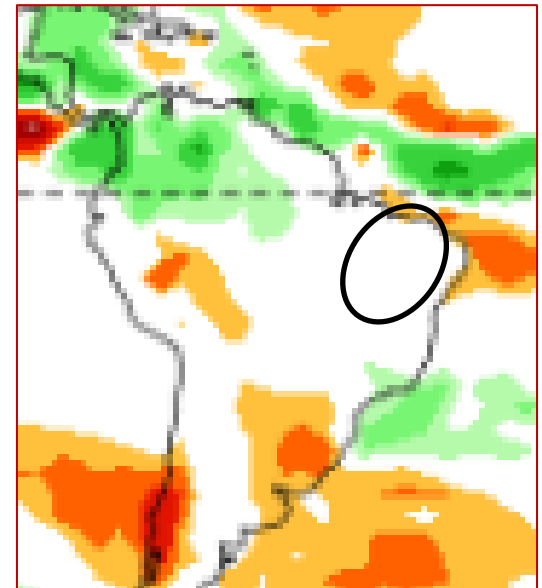
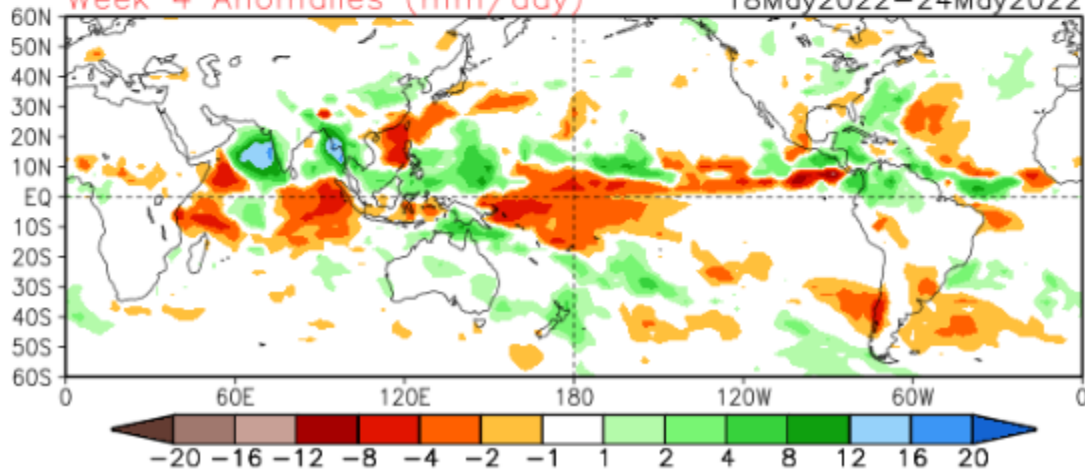
Week 3 Anomalies (mm/day)

11May2022–17May2022



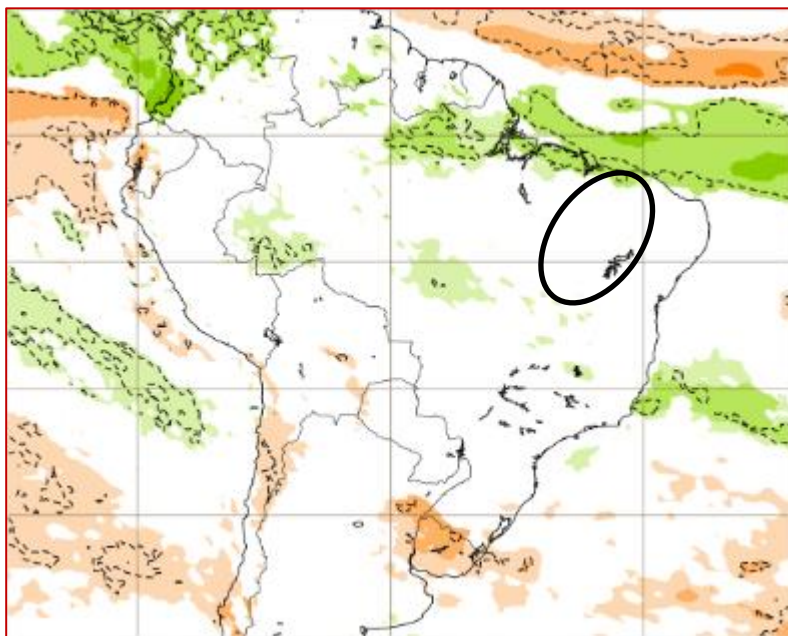
Week 4 Anomalies (mm/day)

18May2022–24May2022

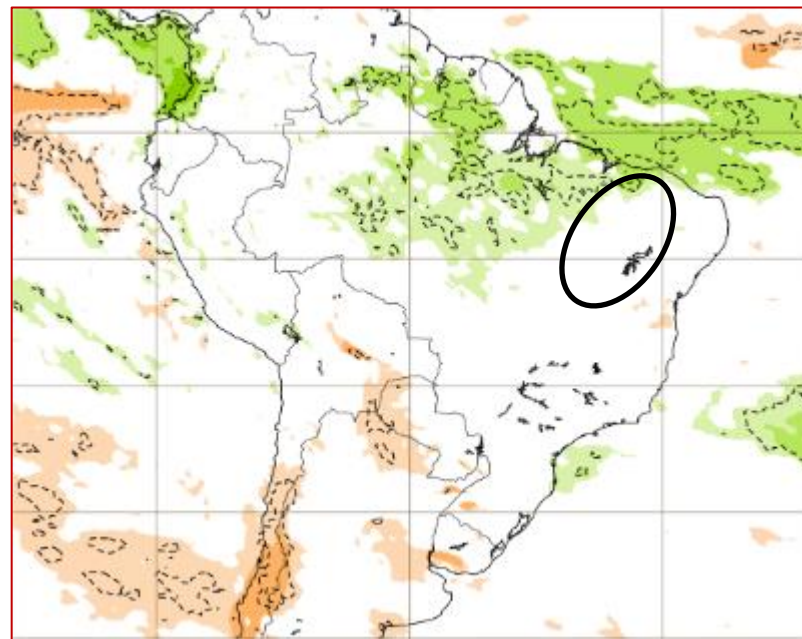


Tendência para 3ª e 4ª semanas

09-16/05

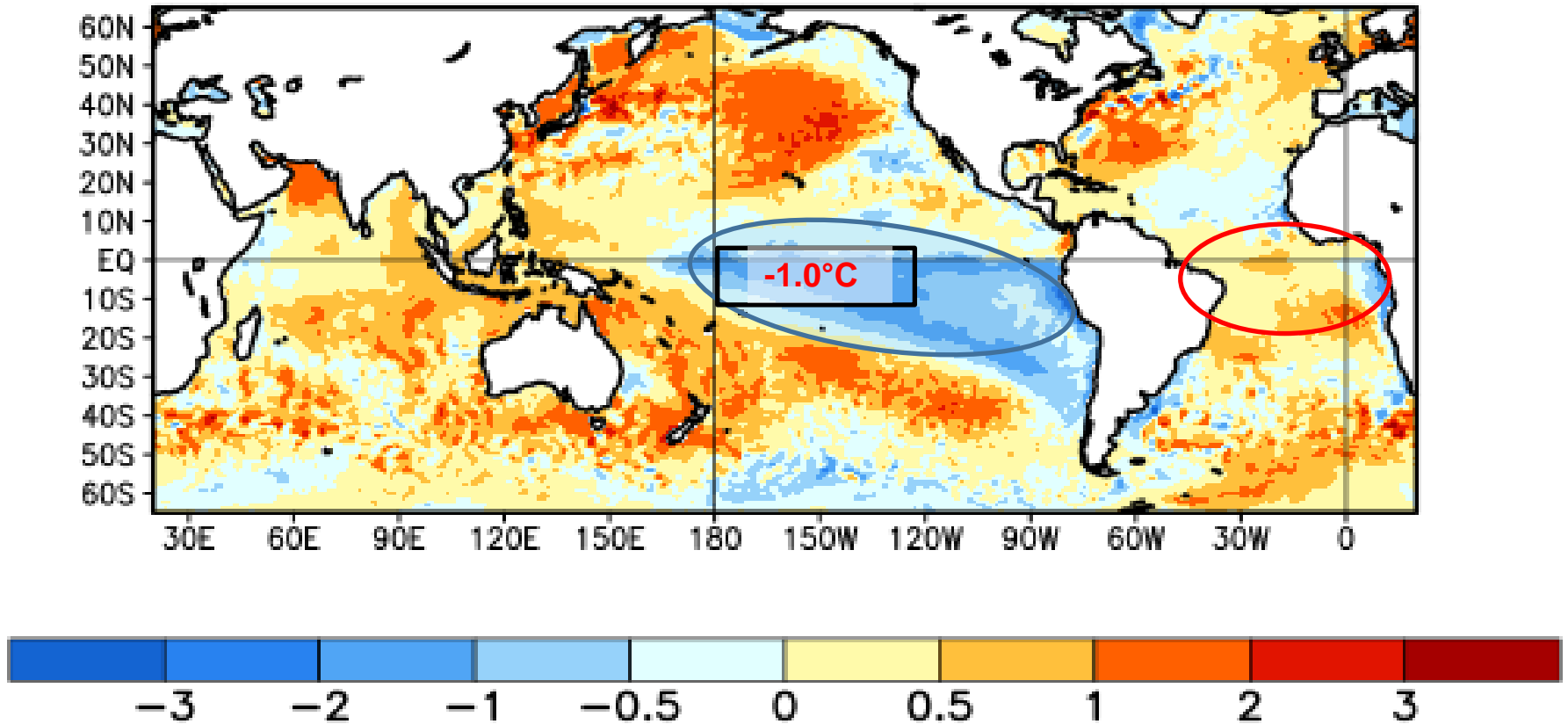


16-23/05



Status Atual: **La Niña**

Average SST Anomalies
27 MAR 2022 – 23 APR 2022



Previsão sazonal de Chuva (MJJ)

