

Monitoramento e Previsões de chuva para a Bacia do Rio Paranapanema

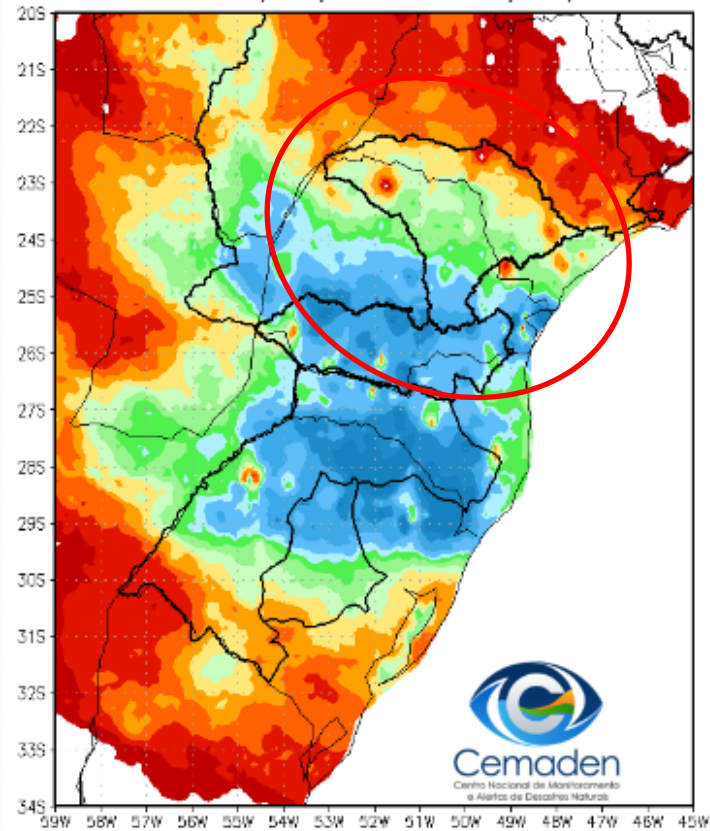


Cemaden
Centro Nacional de Monitoramento
e Alertas de Desastres Naturais

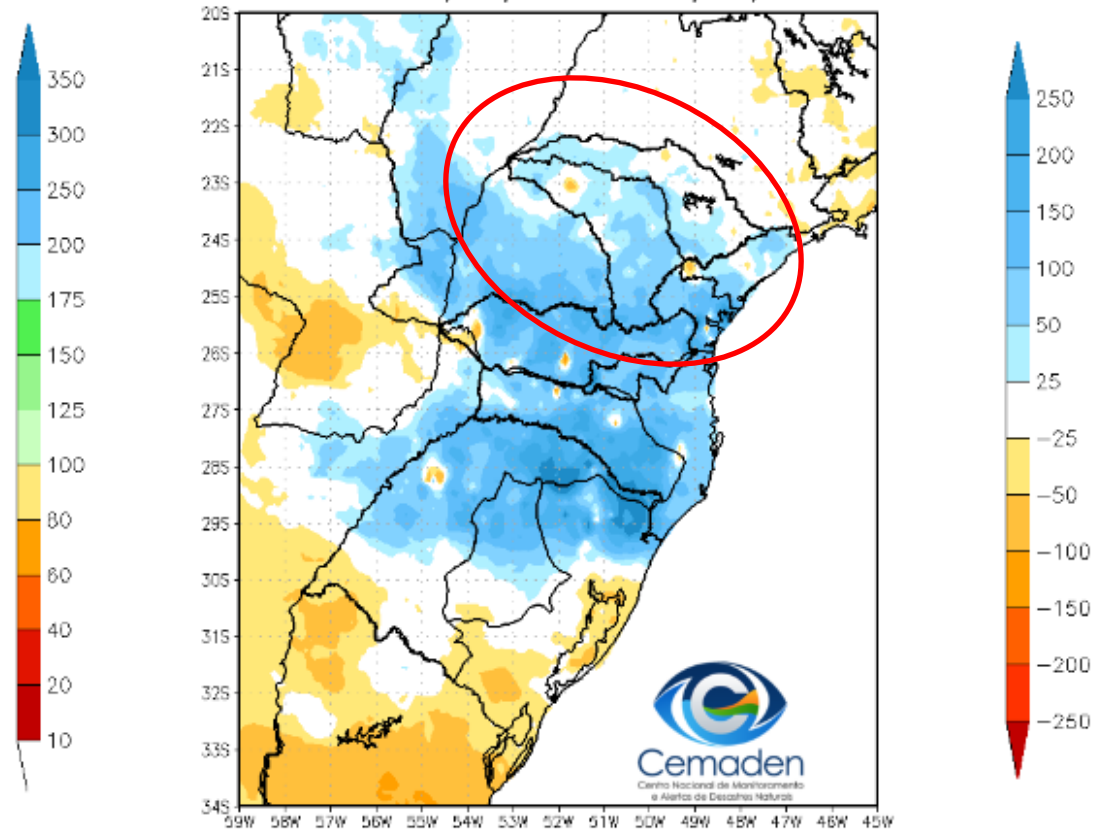
30 de Junho de 2022

Precipitação acumulada nos últimos 30 dias

Precipitação Acumulada (mm) A.S.
Período: 29/05/2022 a 28/06/2022

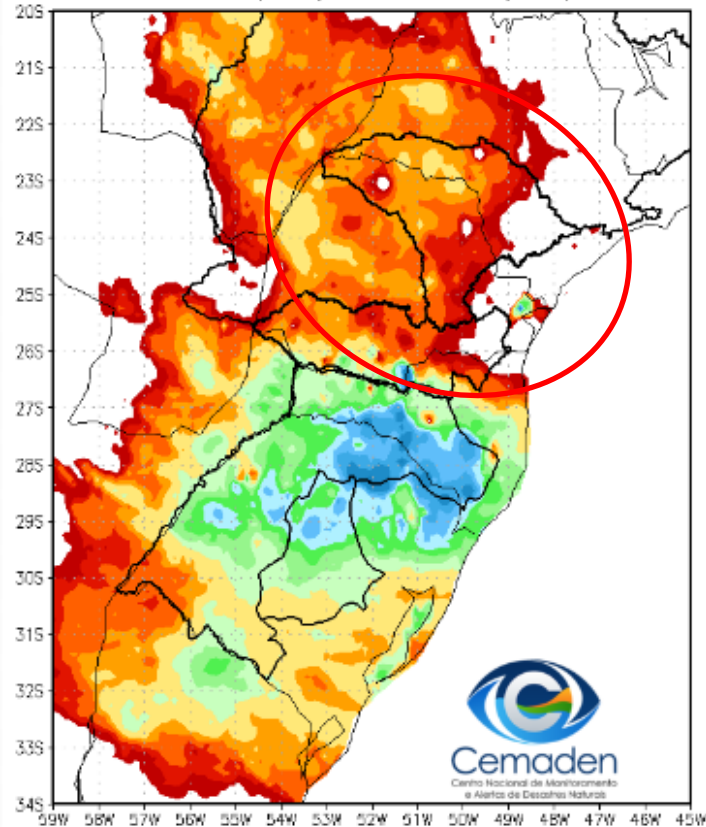


Anomalia de Precipitação (mm) A.S.
Período: 29/05/2022 a 28/06/2022

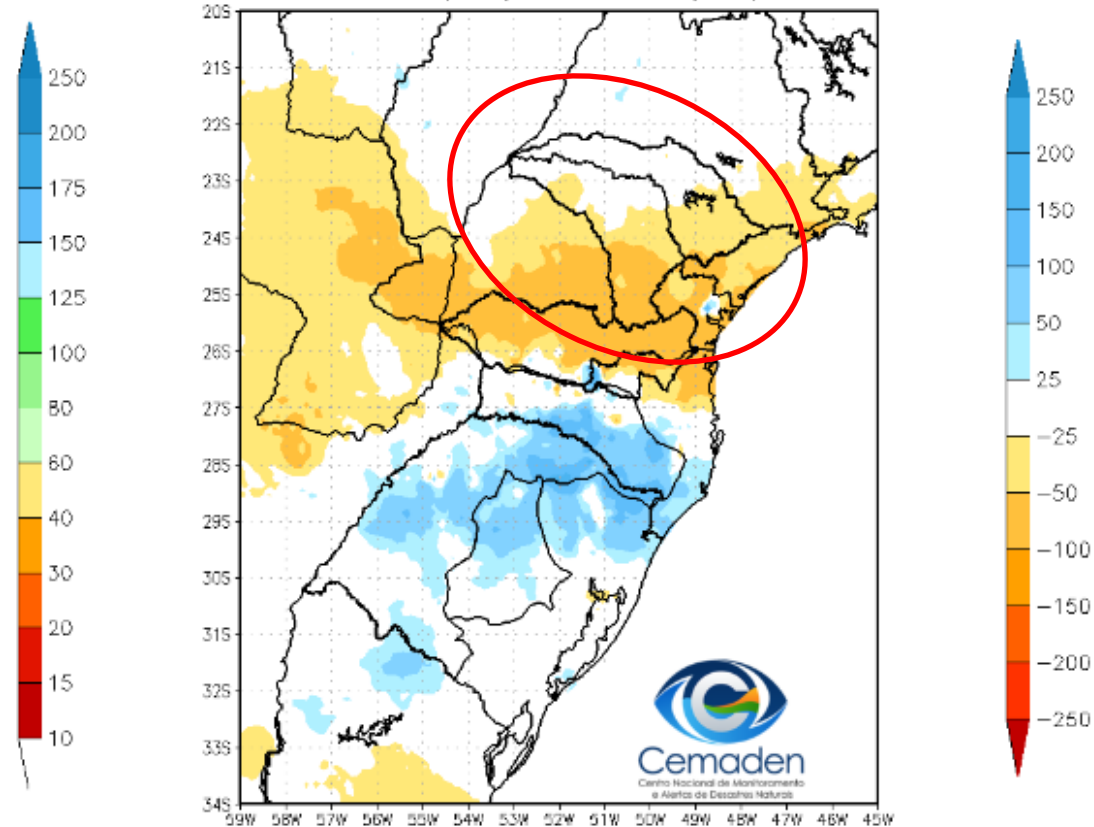


Precipitação acumulada nos últimos 15 dias

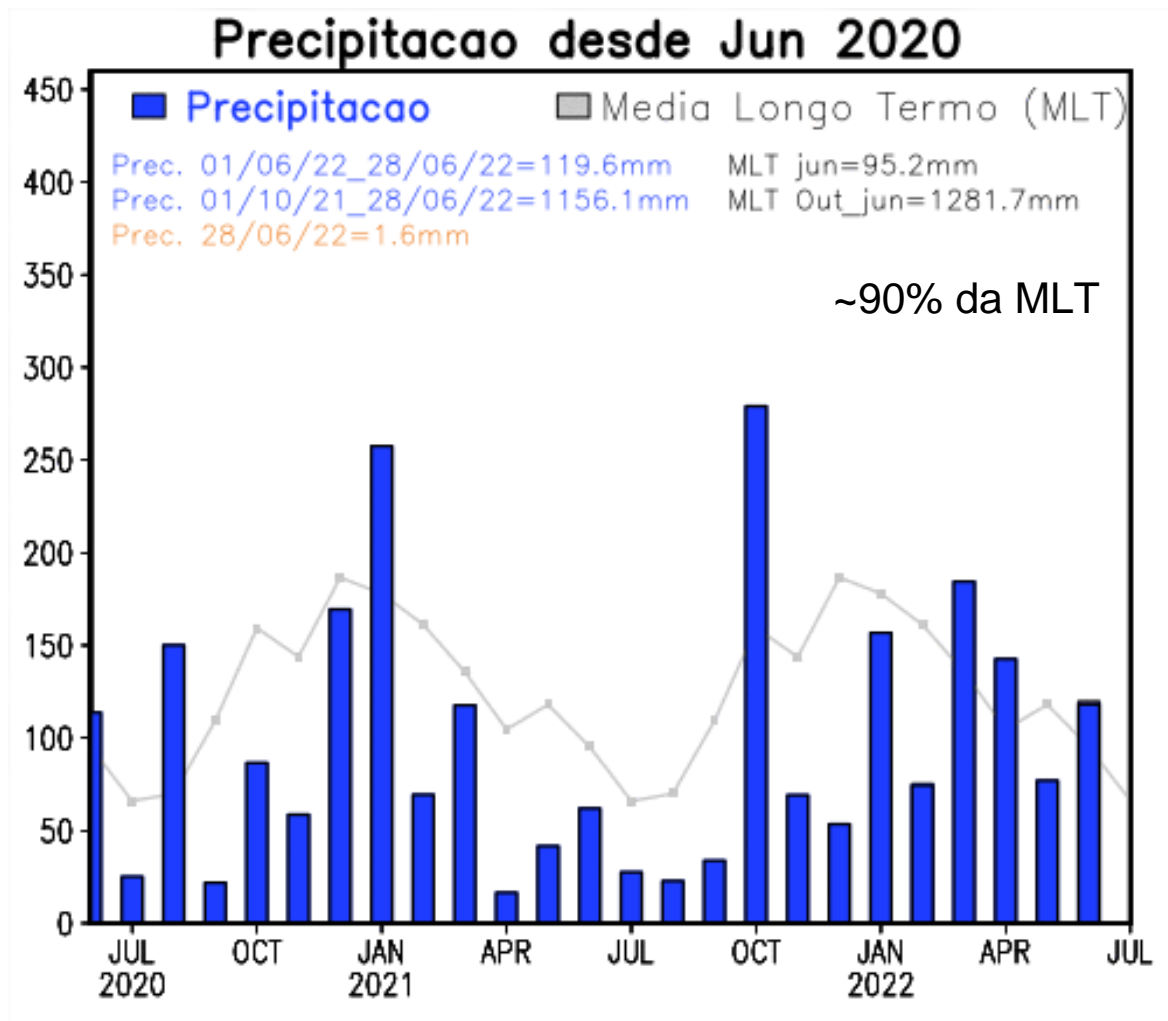
Precipitação Acumulada (mm) A.S.
Período: 13/06/2022 a 28/06/2022



Anomalia de Precipitação (mm) A.S.
Período: 13/06/2022 a 28/06/2022

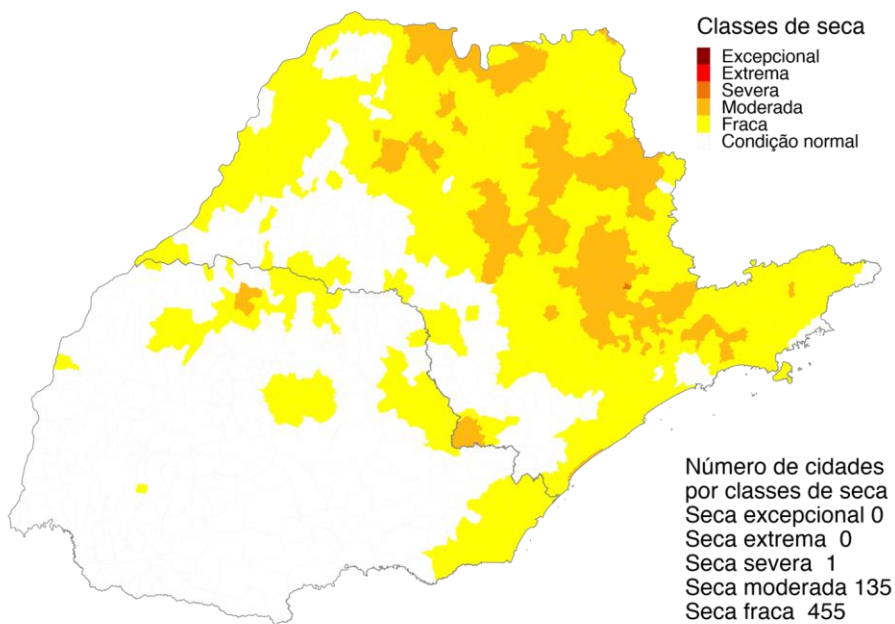


Evolução temporal da precipitação



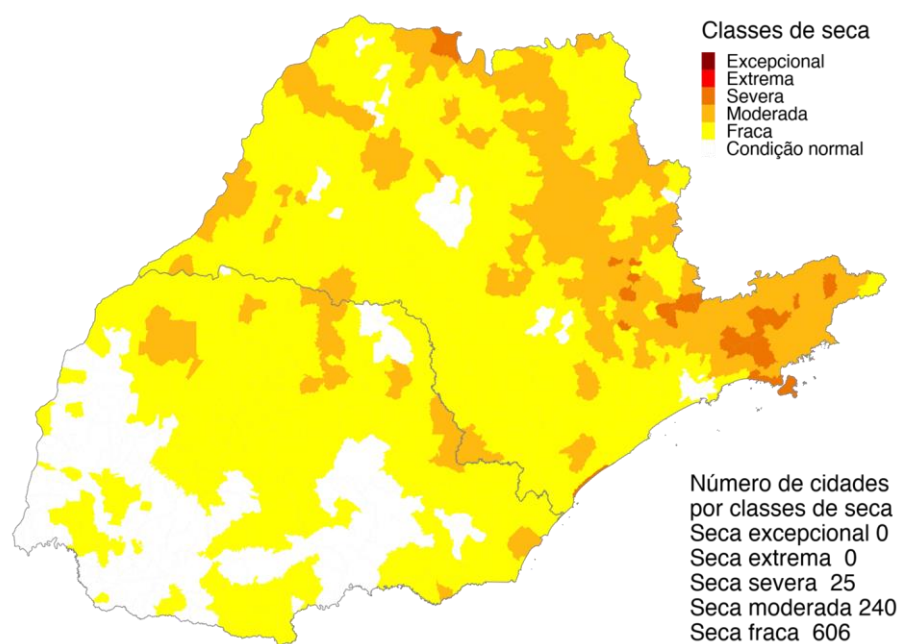
Índice Integrado de Seca – IIS nas escalas de 3 e 6 meses

IIS3



Junho 2022
Índice Integrado de Seca (SPI3, VHI, AUS)
Dados: CPTEC/INPE - NOAA - NASA / Preparação: Cemaden/MCTI

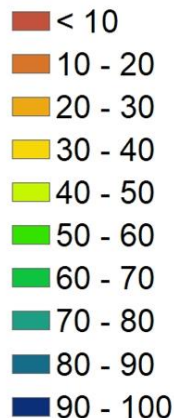
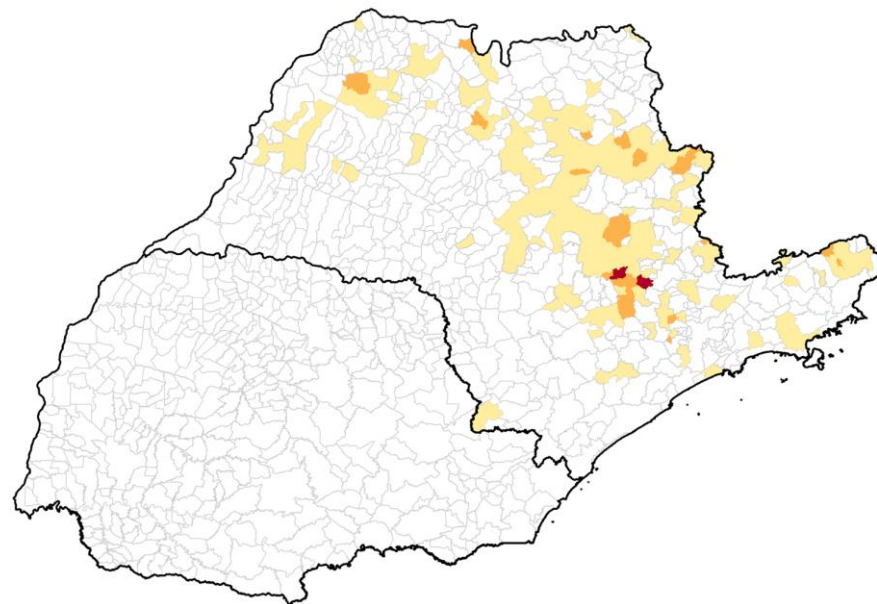
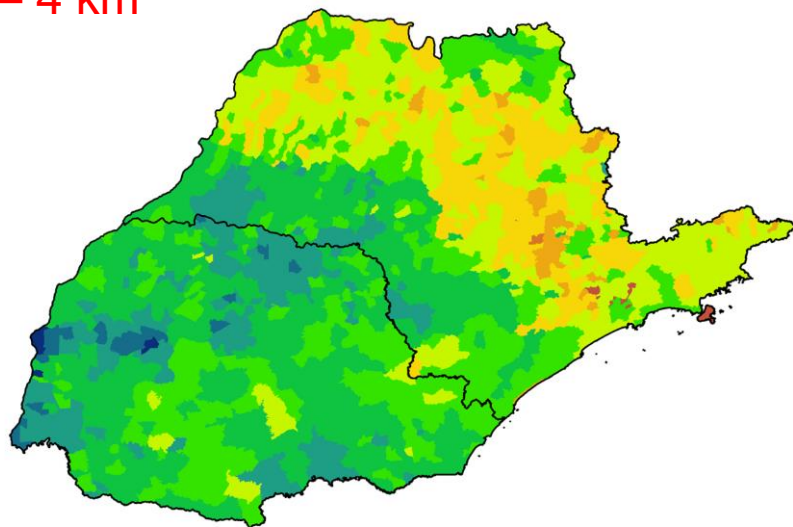
IIS6



Junho 2022
Índice Integrado de Seca (SPI6, VHI, AUS)
Dados: CPTEC/INPE - NOAA - NASA / Preparação: Cemaden/MCTI

Áreas Agroprodutivas afetadas pela seca: Bacia do rio Paranapanema: 24/06

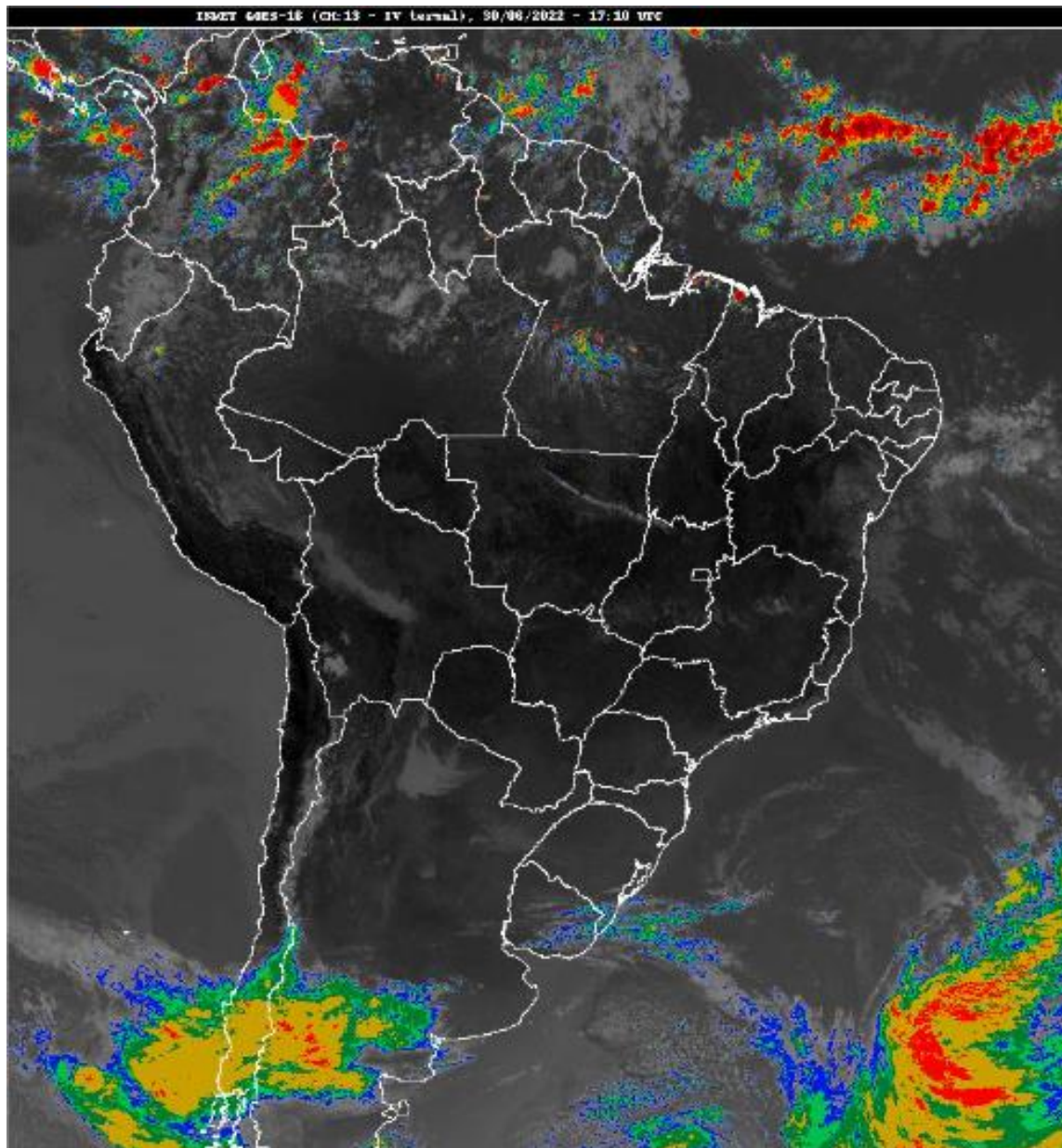
VHI – 4 km



UF	40 a 60%		60 - 80%		> 80%	
	25/mar	24/jun	25/mar	24/jun	25/mar	24/jun
Paraná	128	-	87	-	30	-
São Paulo	86	147	14	22	1	2

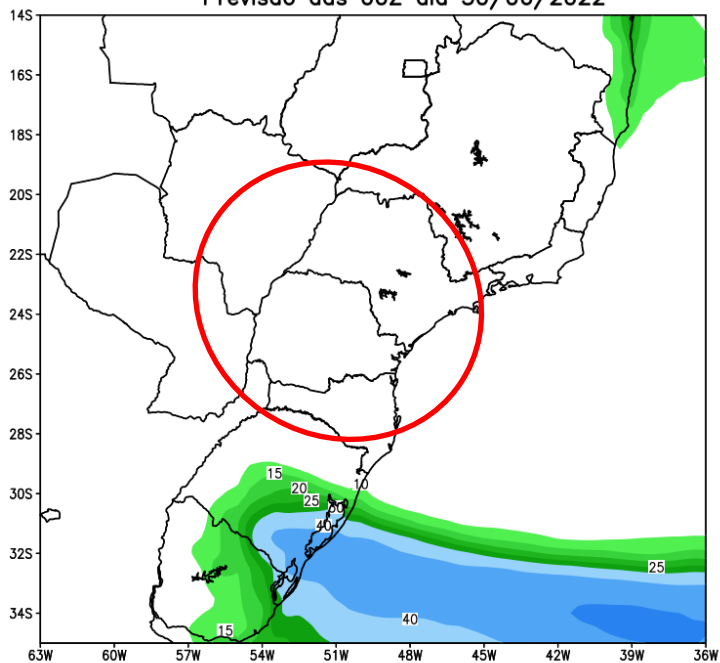
*Estimativa a partir dos dados do Cadastro Ambiental Rural para minifúndios, pequenas e médias propriedades e VHI (Satélite)

Situação Meteorológica Atual

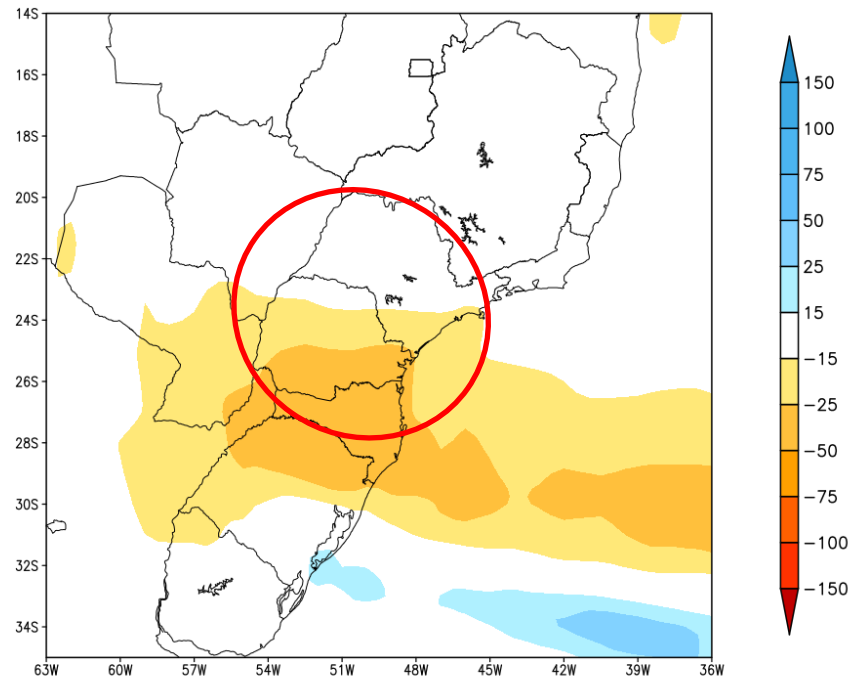


Previsão de chuva para os próximos 7 dias

GEFS / BRASIL_SUL
Precipitacao acumulada 1aSem (mm)
Previsao das 00Z dia 30/06/2022



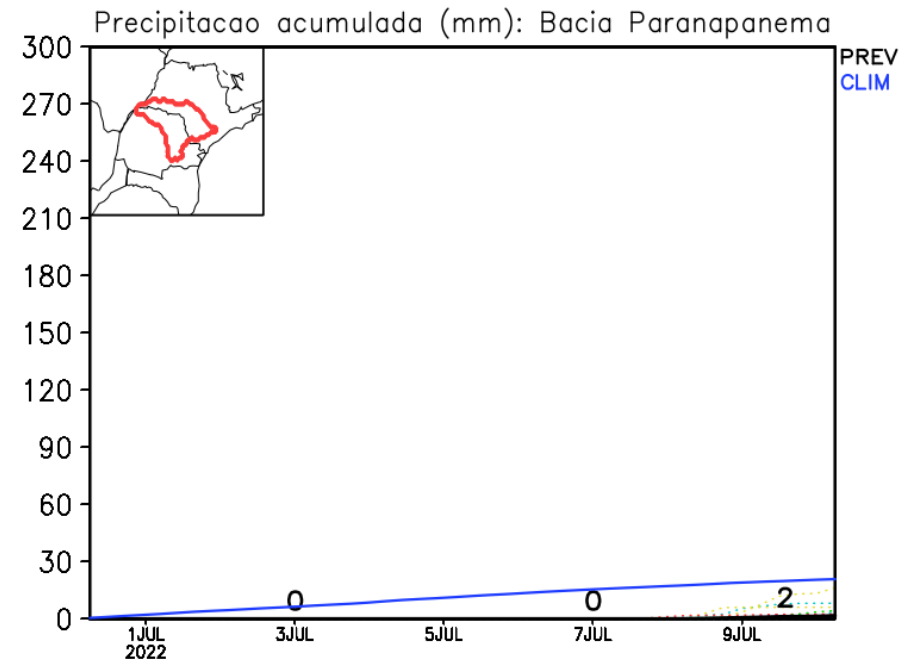
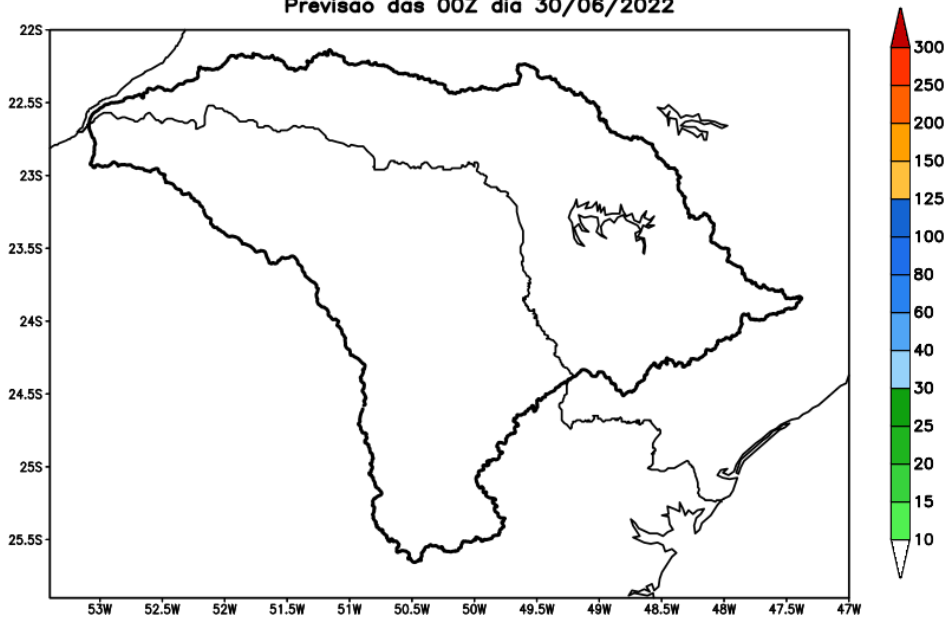
Anomalia de Precipitacao BR SUL (mm)
Periodo: 2022063000 a 2022070700



Fonte: GFS/NOAA

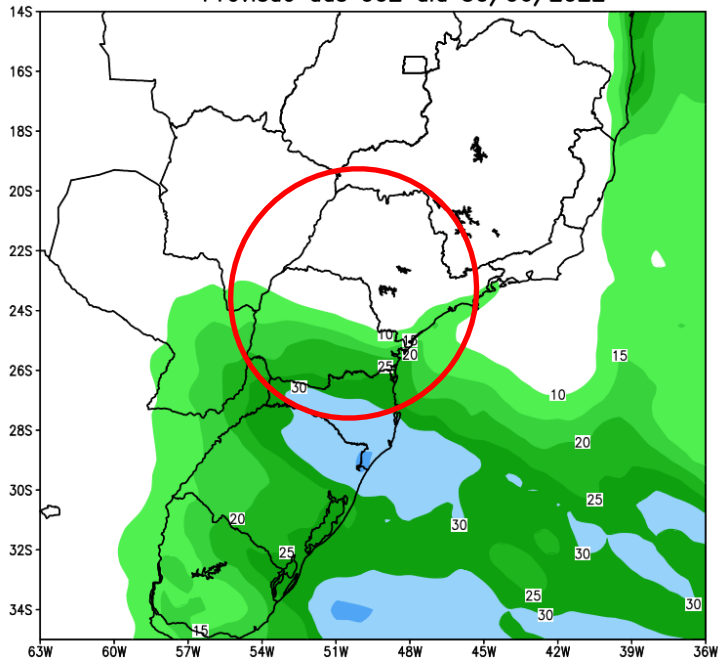
Bacia do rio Paranapanema

GEFS_BC / Bacia do Rio Paranapanema
Prec. acumulada com correcao de vies em 7 dias (mm)
Previsao das 00Z dia 30/06/2022



Tendência para a 2ª Semana

GEFS / BRASIL_SUL
Precipitacao acumulada 2aSem (mm)
Previsao das 00Z dia 30/06/2022

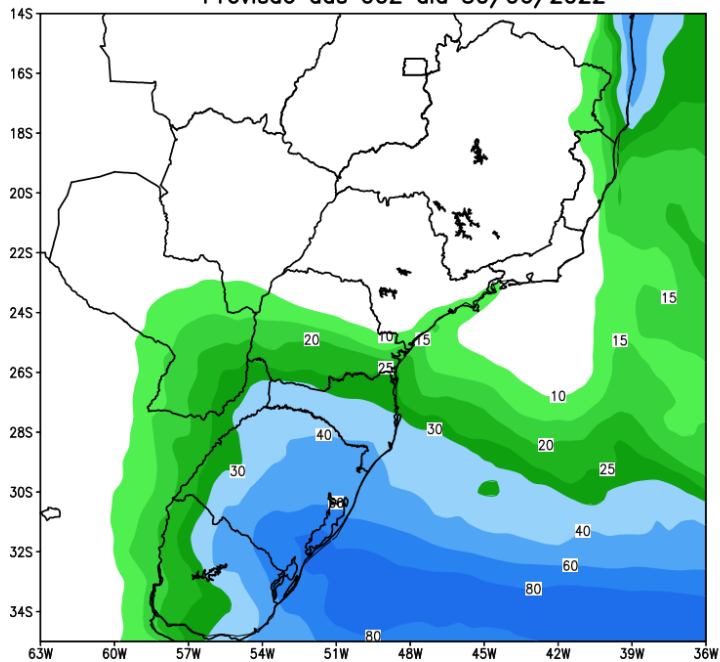


Anomalia de Precipitacao BR_SUL (mm)
Periodo: 2022070800 a 2022071400

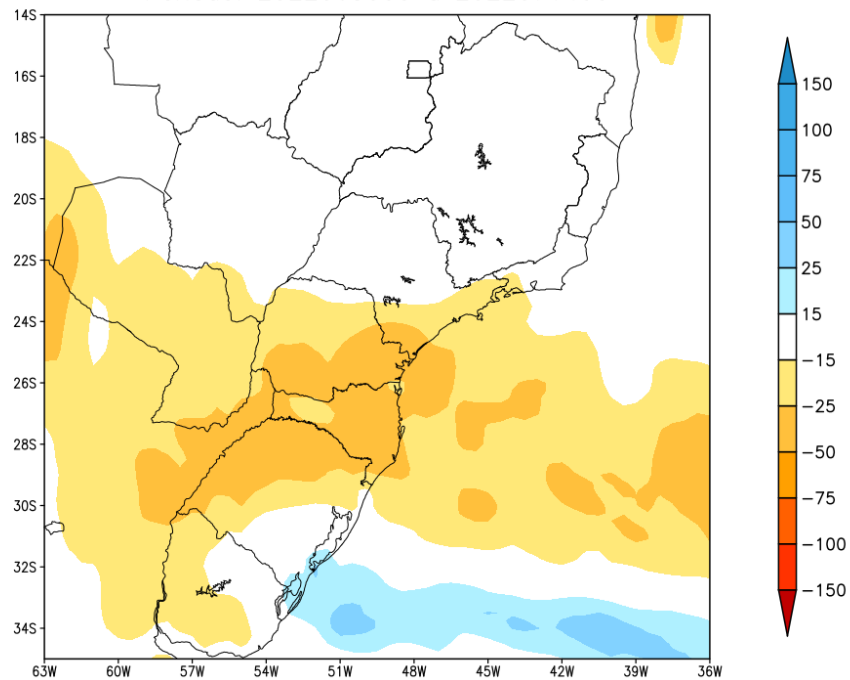


Tendência para as duas próximas semanas

GEFS / BRASIL_SUL
Precipitacao acumulada 14dias (mm)
Previsao das 00Z dia 30/06/2022



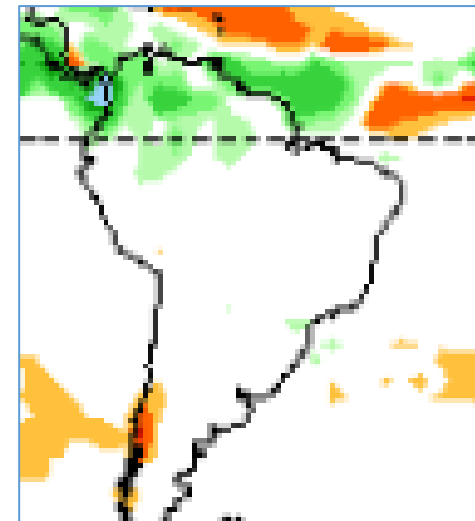
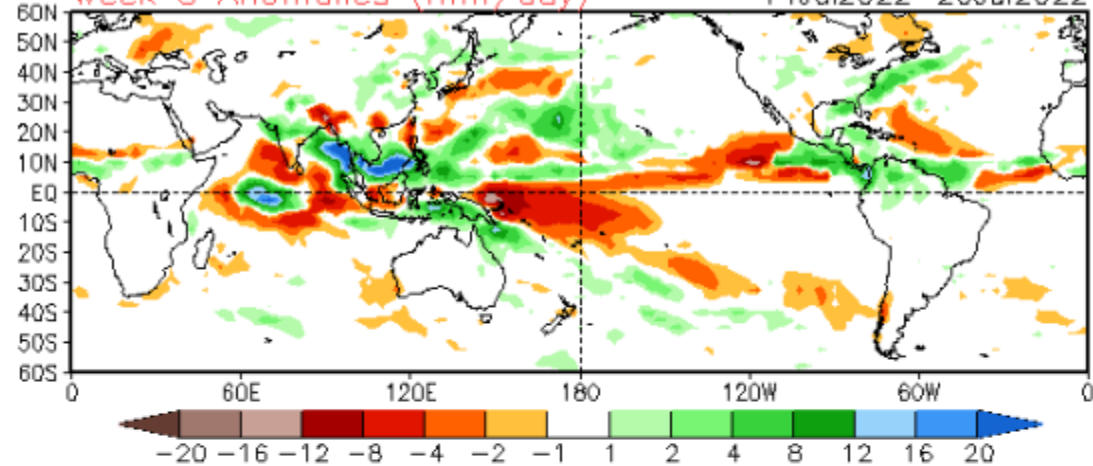
Anomalia de Precipitacao BR SUL (mm)
Periodo: 2022063000 a 2022071400



Tendência 3a e 4a semanas

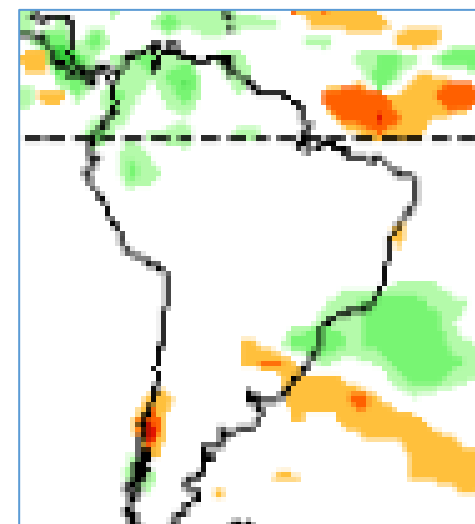
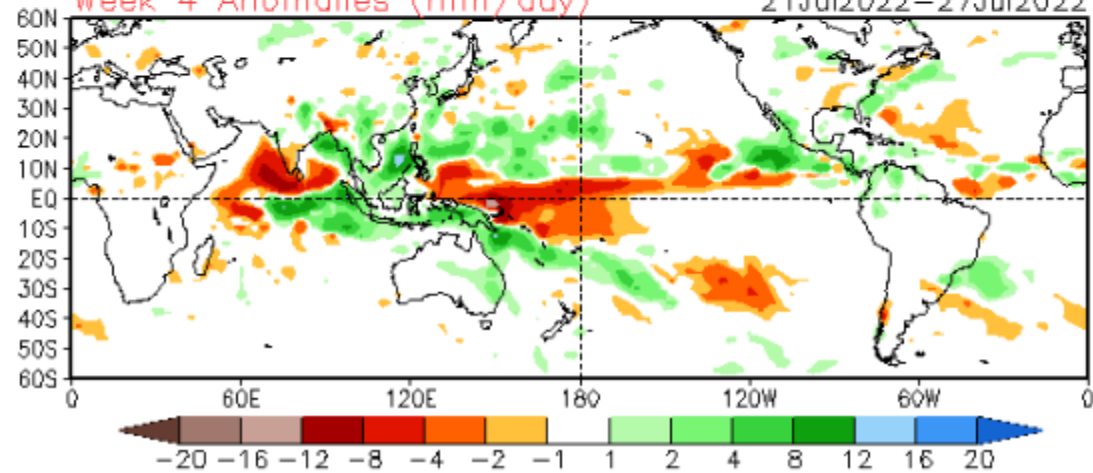
Week 3 Anomalies (mm/day)

14Jul2022–20Jul2022



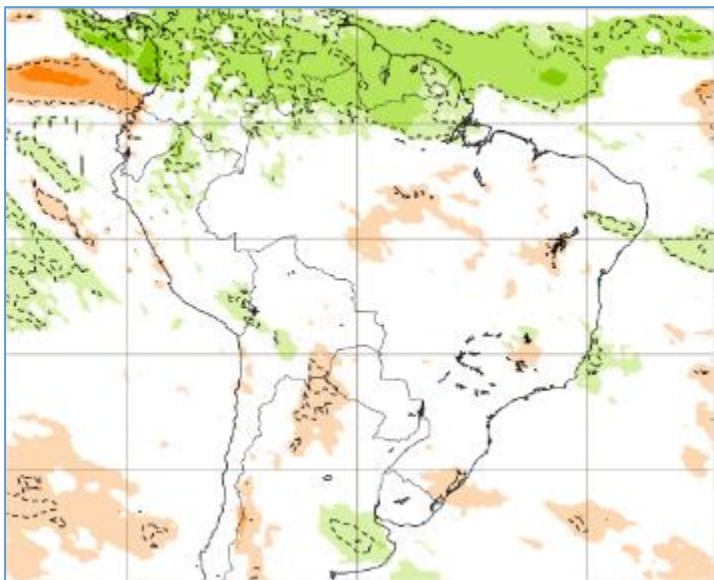
Week 4 Anomalies (mm/day)

21Jul2022–27Jul2022

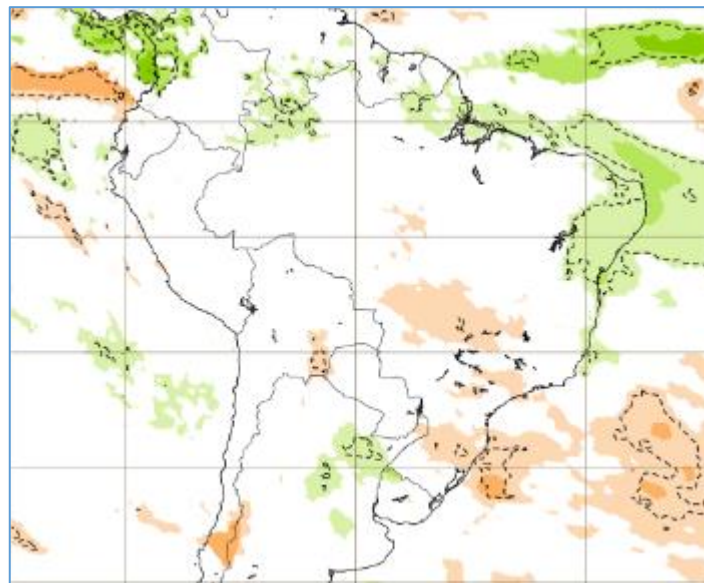


Tendência para 3ª e 4ª semanas

11-18/07

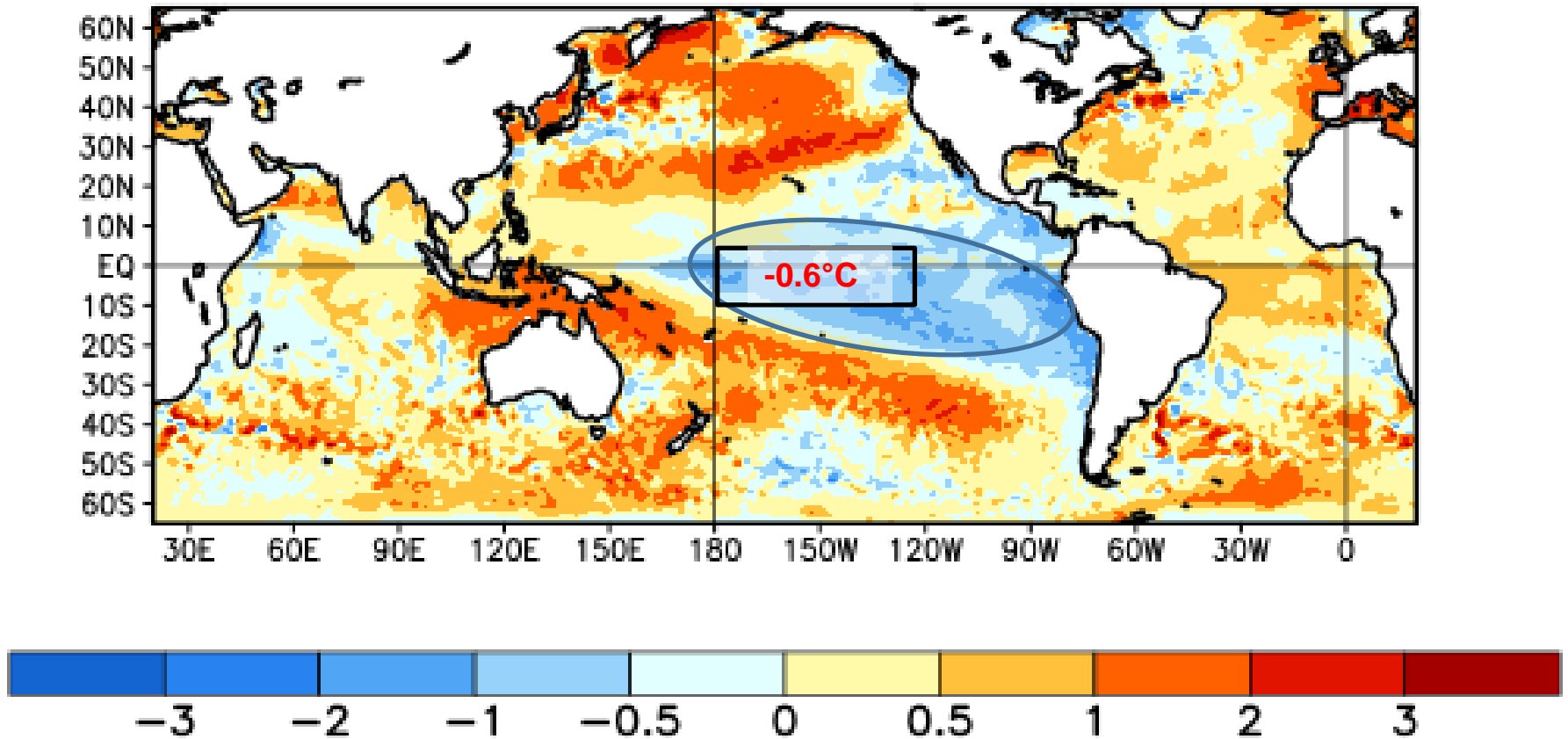


18-25/07



Status Atual: **La Niña**

Average SST Anomalies 29 MAY 2022 – 25 JUN 2022

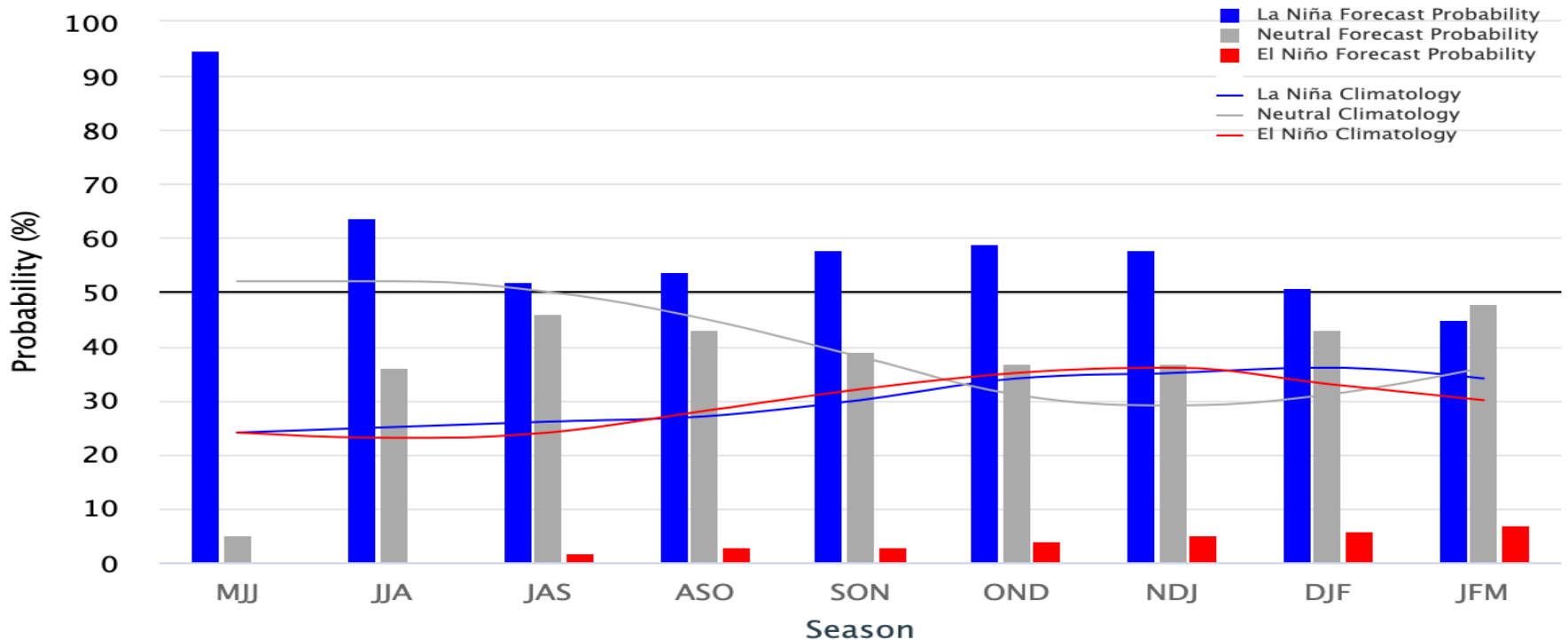


Previsão do “La Niña”

Early-June 2022 CPC/IRI Official Probabilistic ENSO Forecasts

ENSO state based on NINO3.4 SST Anomaly

Neutral ENSO: $-0.5\text{ }^{\circ}\text{C}$ to $0.5\text{ }^{\circ}\text{C}$



Status Atual: **La Niña**

FONTE: NOAA

Previsão sazonal de Chuva (JAS)

