

Monitoramento e Previsões de chuva para a Bacia do Rio Paranapanema

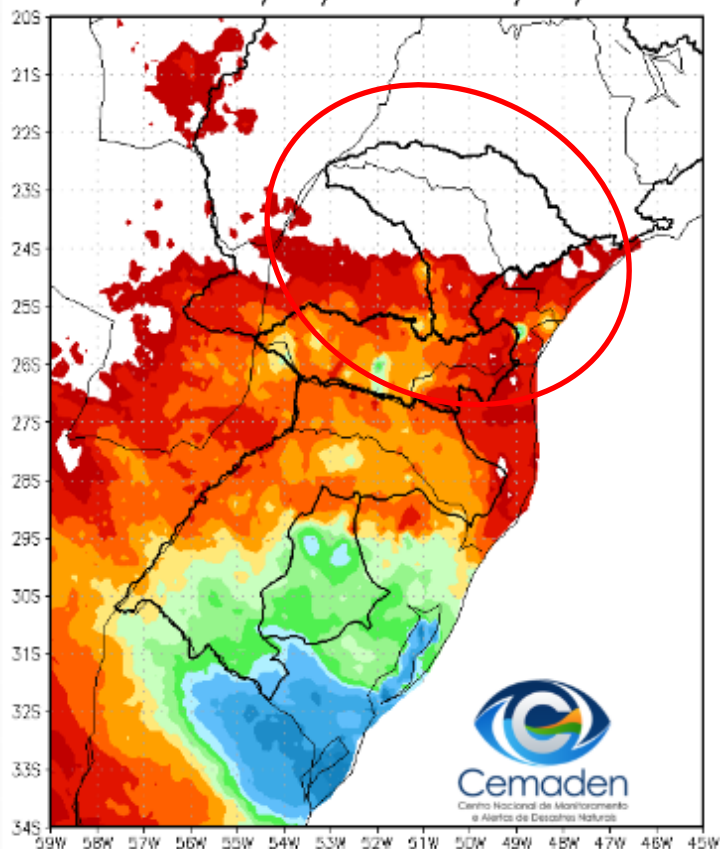


Cemaden
Centro Nacional de Monitoramento
e Alertas de Desastres Naturais

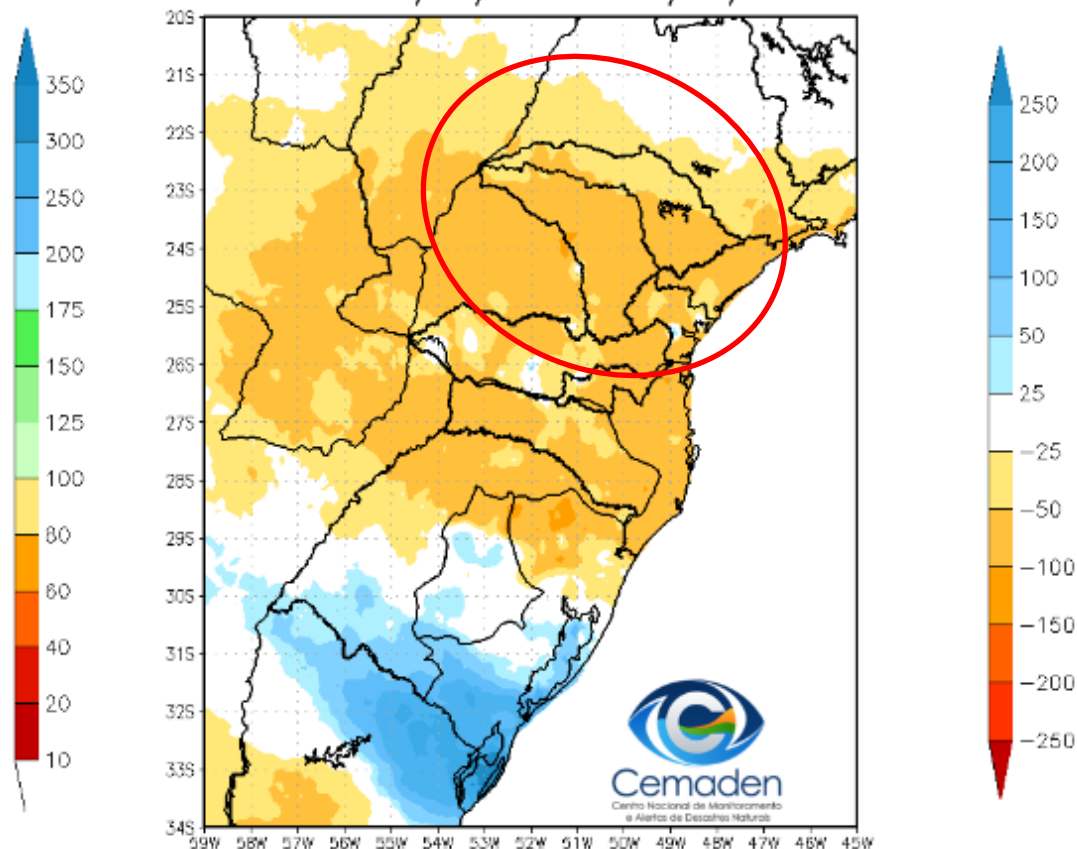
28 de Julho de 2022

Precipitação acumulada nos últimos 30 dias

Precipitação Acumulada (mm) A.S.
Período: 27/06/2022 a 27/07/2022

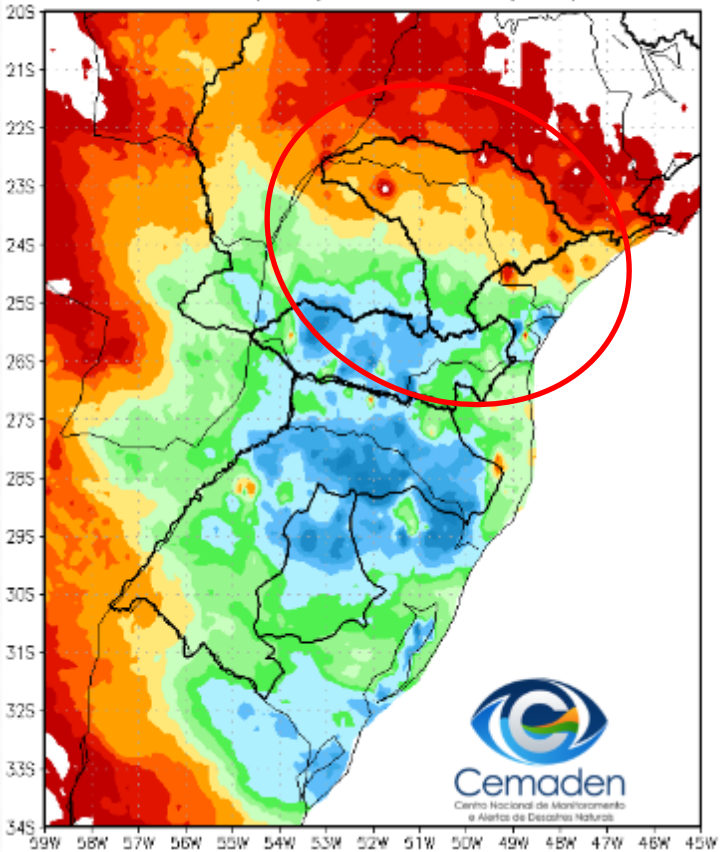


Anomalia de Precipitação (mm) A.S.
Período: 27/06/2022 a 27/07/2022

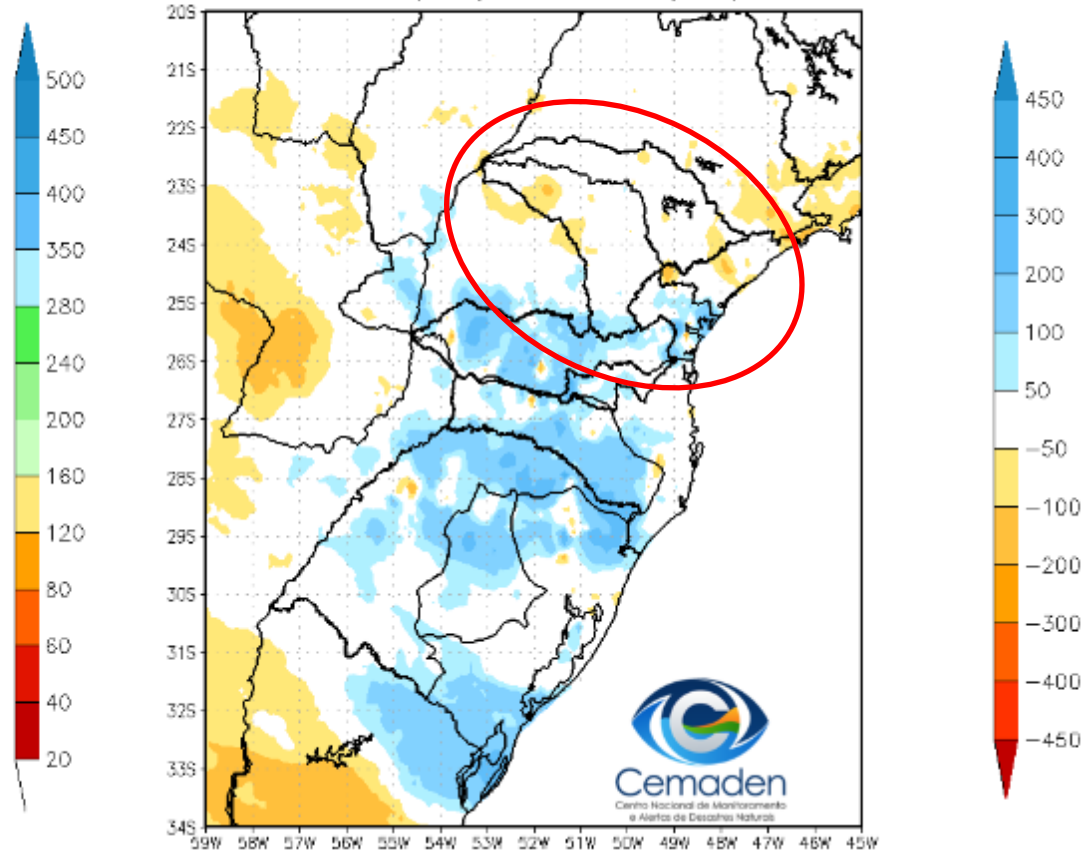


Precipitação acumulada nos últimos 60 dias

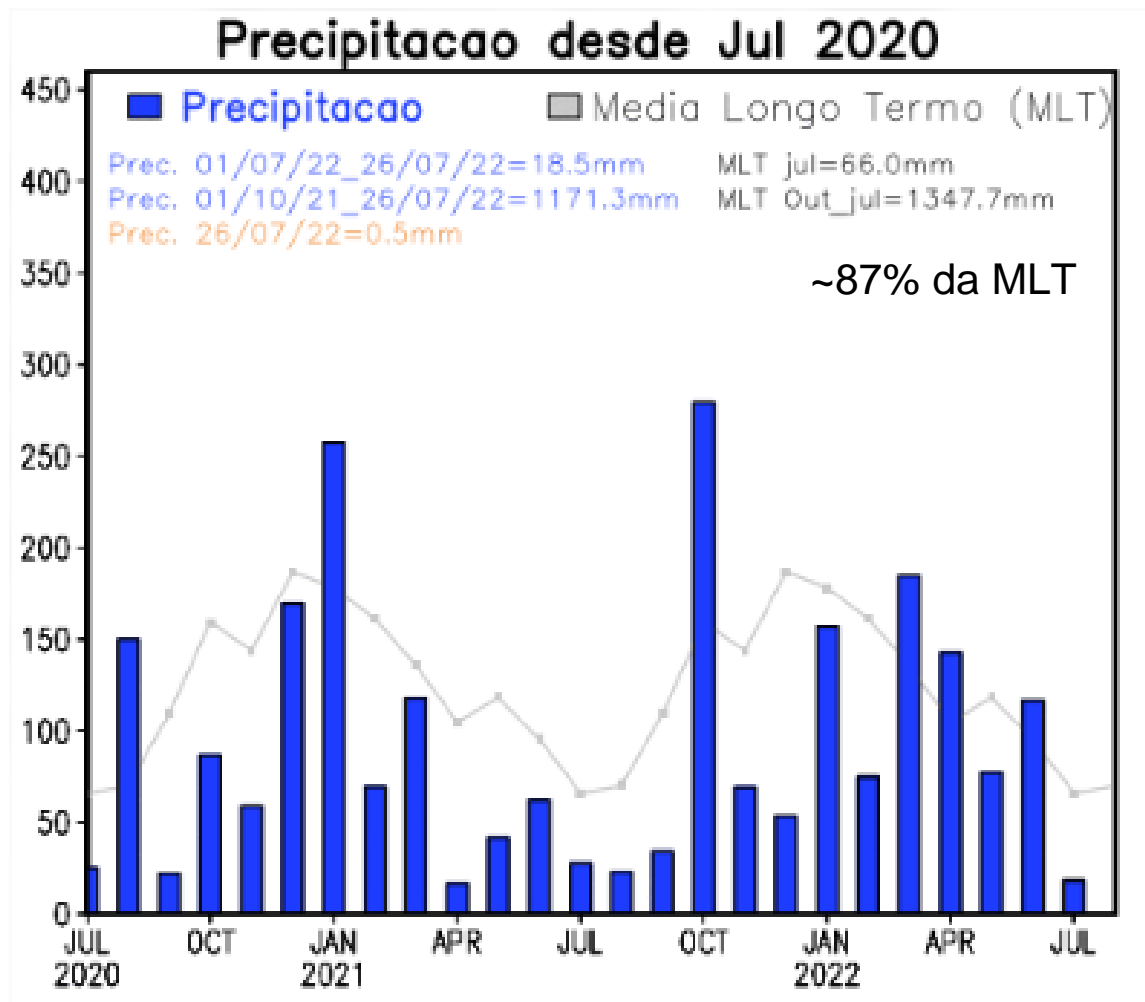
Precipitação Acumulada (mm) A.S.
Período: 28/05/2022 a 27/07/2022



Anomalia de Precipitação (mm) A.S.
Período: 28/05/2022 a 27/07/2022

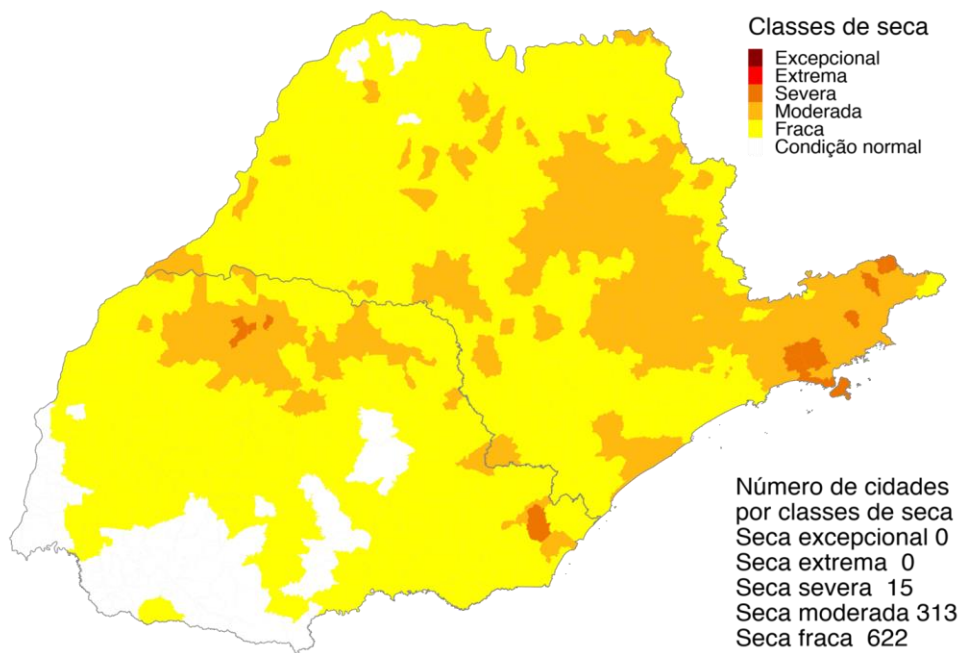


Evolução temporal da precipitação



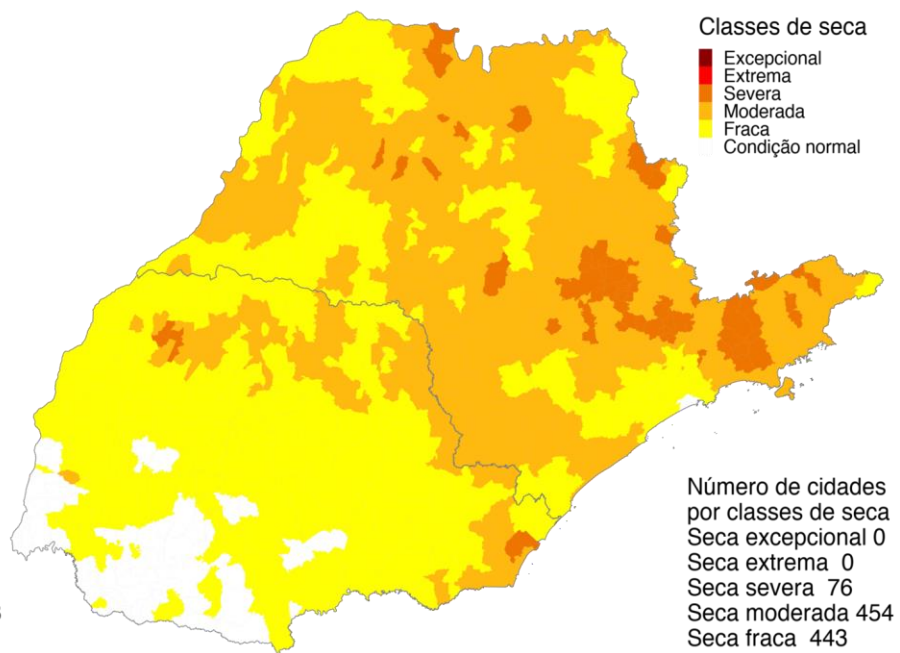
Índice Integrado de Seca – IIS nas escalas de 3 e 6 meses

IIS3



Julho 2022
Índice Integrado de Seca (SPI3, VHI, AUS)
Dados: CPTEC/INPE - NOAA - NASA / Preparação: Cemaden/MCTI

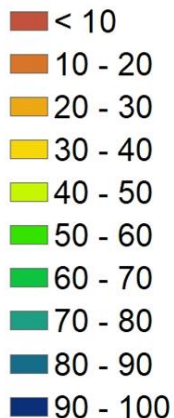
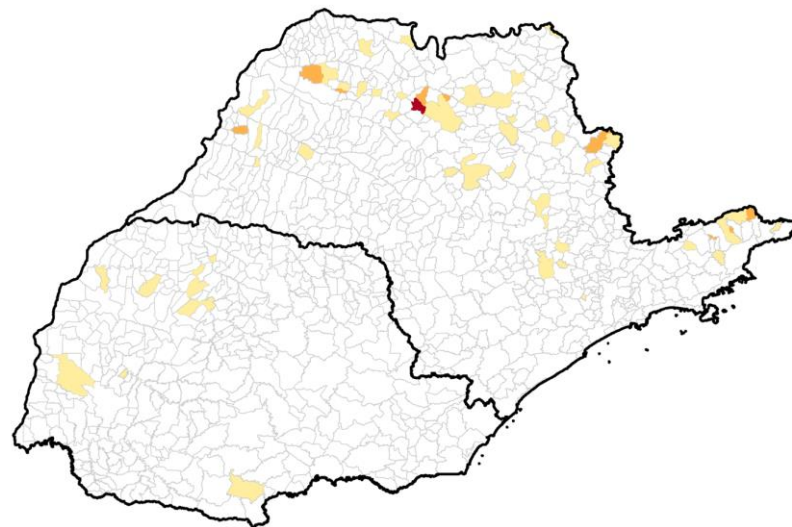
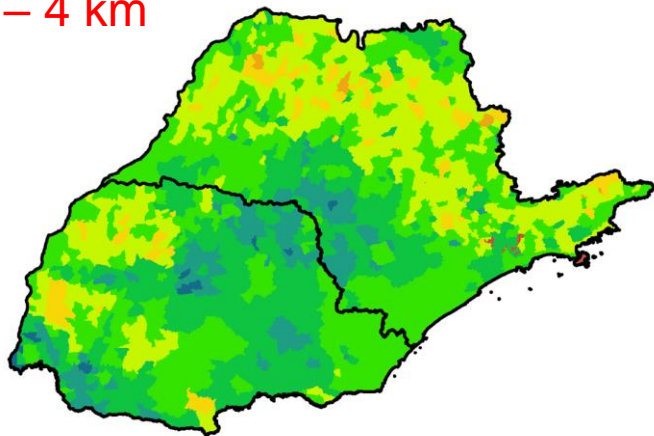
IIS6



Julho 2022
Índice Integrado de Seca (SPI6, VHI, AUS)
Dados: CPTEC/INPE - NOAA - NASA / Preparação: Cemaden/MCTI

Áreas Agroprodutivas afetadas pela seca: Bacia do rio Paranapanema: **22/07**

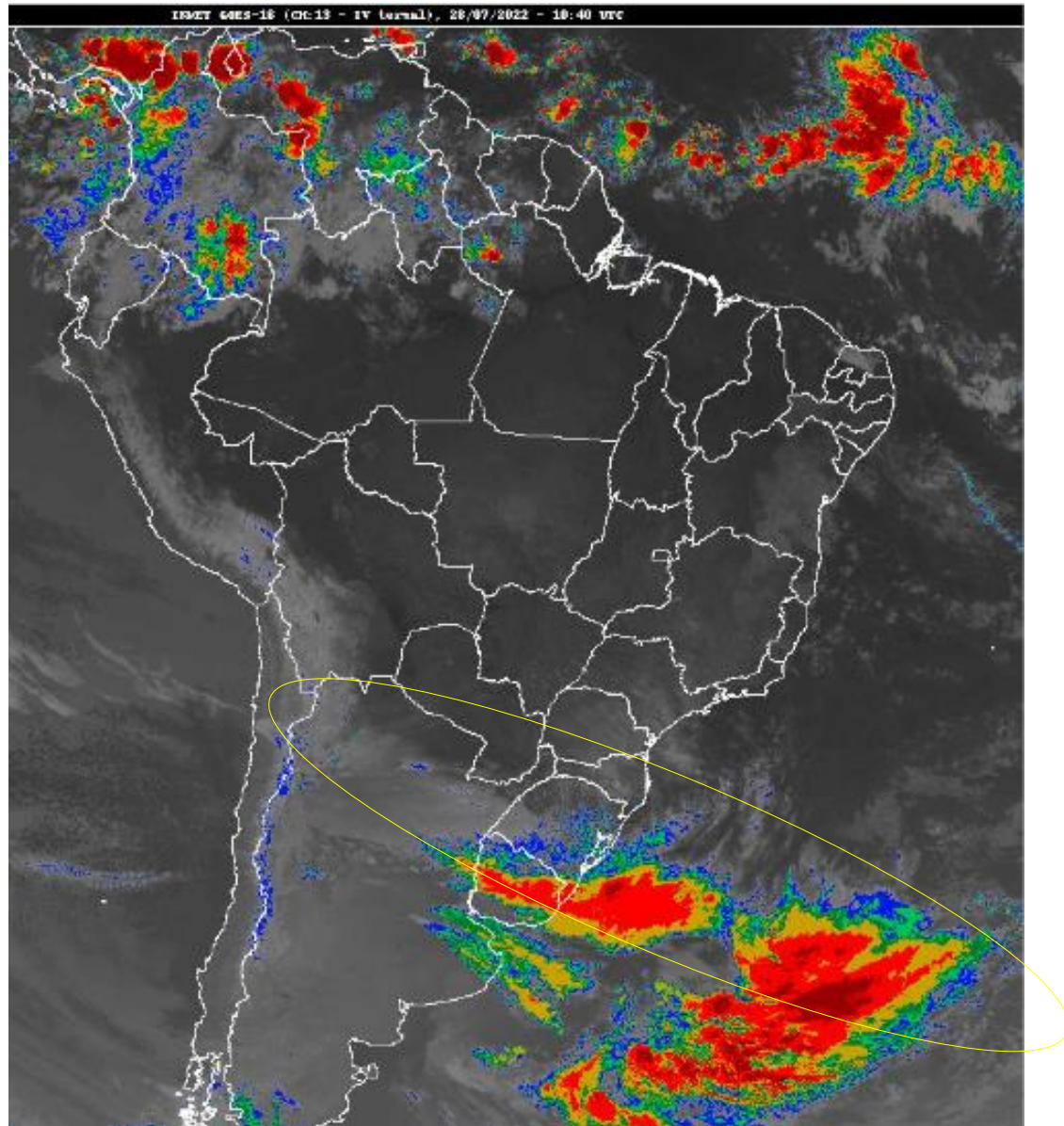
VHI - 4 km



UF	40 a 60%		60 - 80%		> 80%	
	24/jun	22/jul	24/jun	22/jul	24/jun	22/jul
Paraná	-	15	-	-	-	-
São Paulo	147	53	22	11	2	1

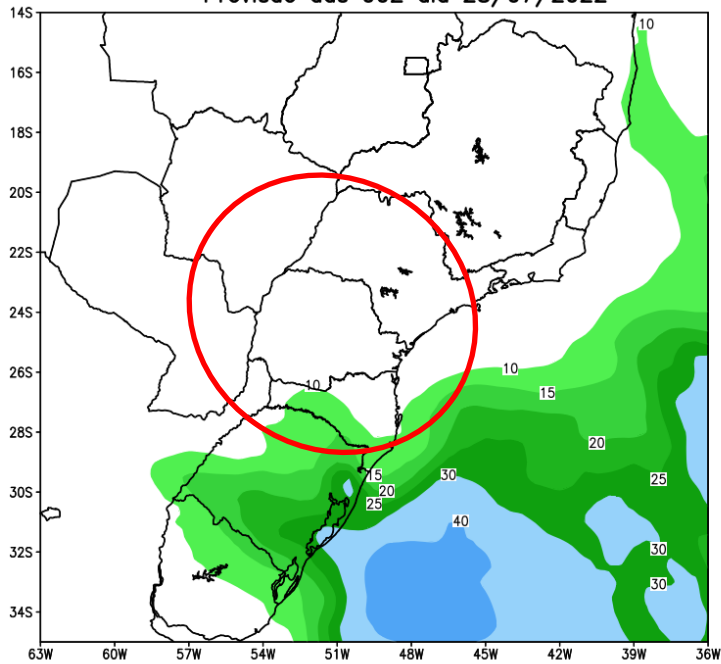
*Estimativa a partir dos dados do Cadastro Ambiental Rural para minifúndios, pequenas e médias propriedades e VHI (Satélite)

Situação Meteorológica Atual

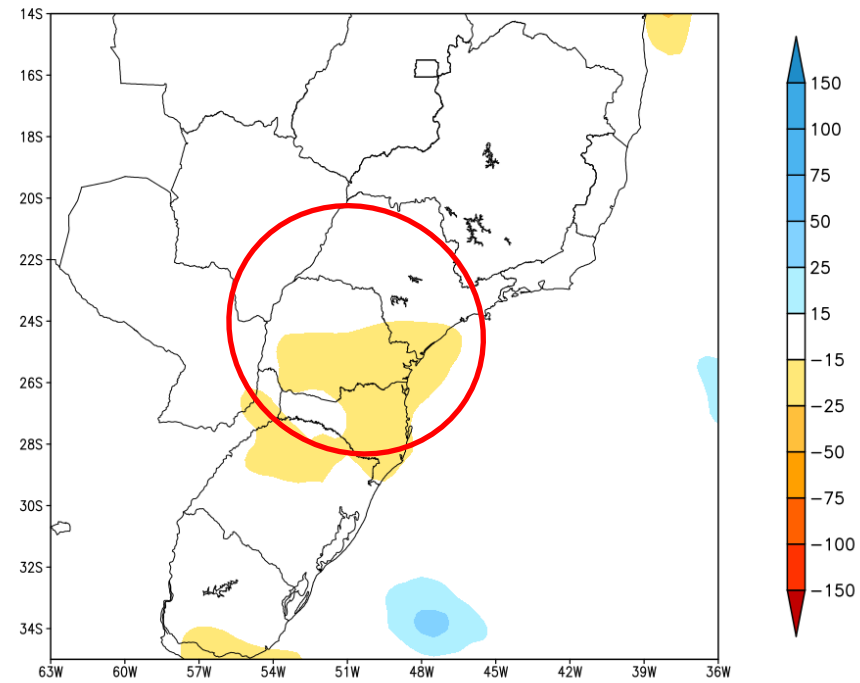


Previsão de chuva para os próximos 7 dias

GEFS / BRASIL_SUL
Precipitacao acumulada 1aSem (mm)
Previsao das 00Z dia 28/07/2022



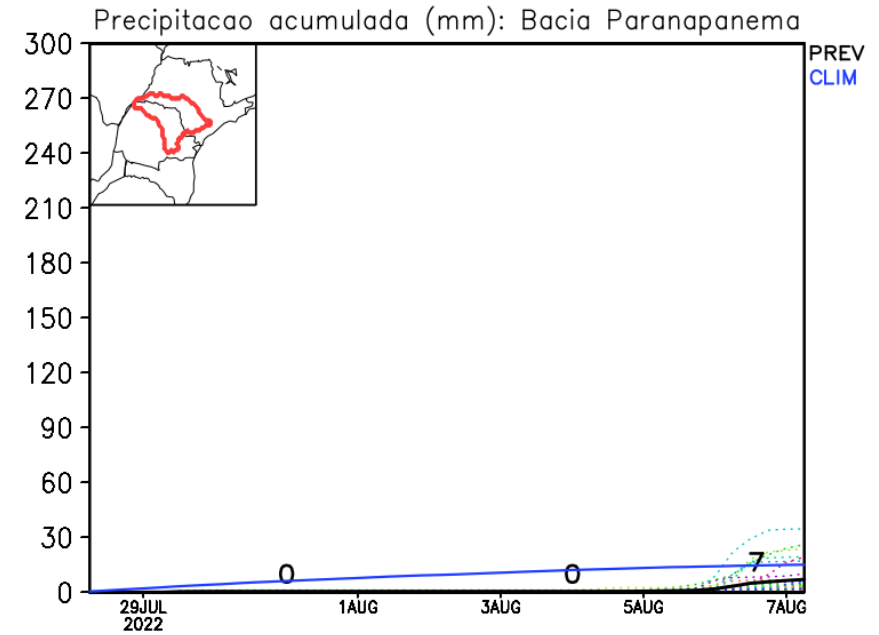
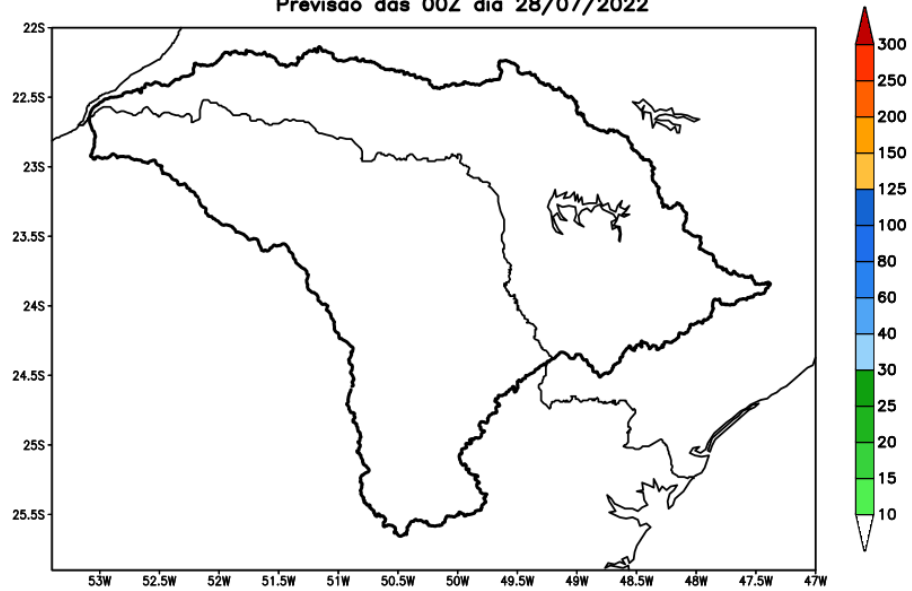
Anomalia de Precipitacao BR SUL (mm)
Periodo: 2022072800 a 2022080400



Fonte: GFS/NOAA

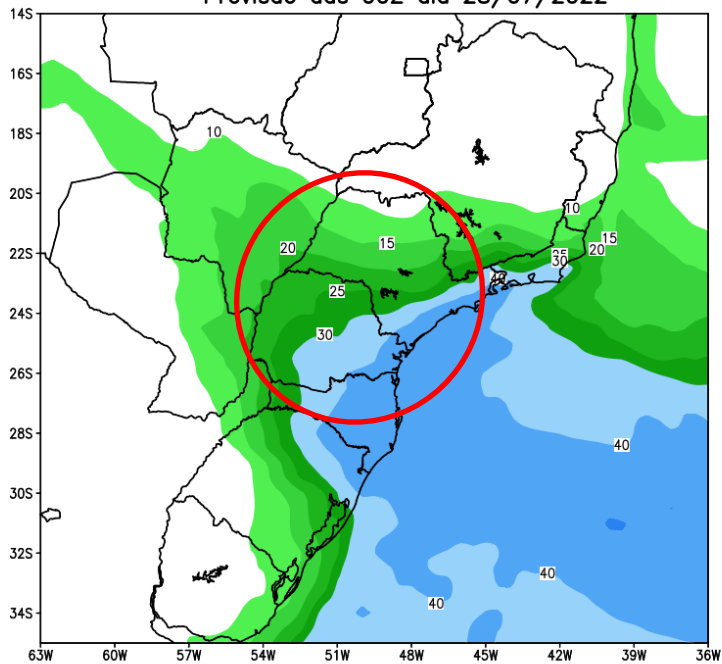
Bacia do rio Paranapanema

GEFS / Bacia do Rio Paranapanema
Precipitacao acumulada em 7 dias (mm)
Previsao das 00Z dia 28/07/2022

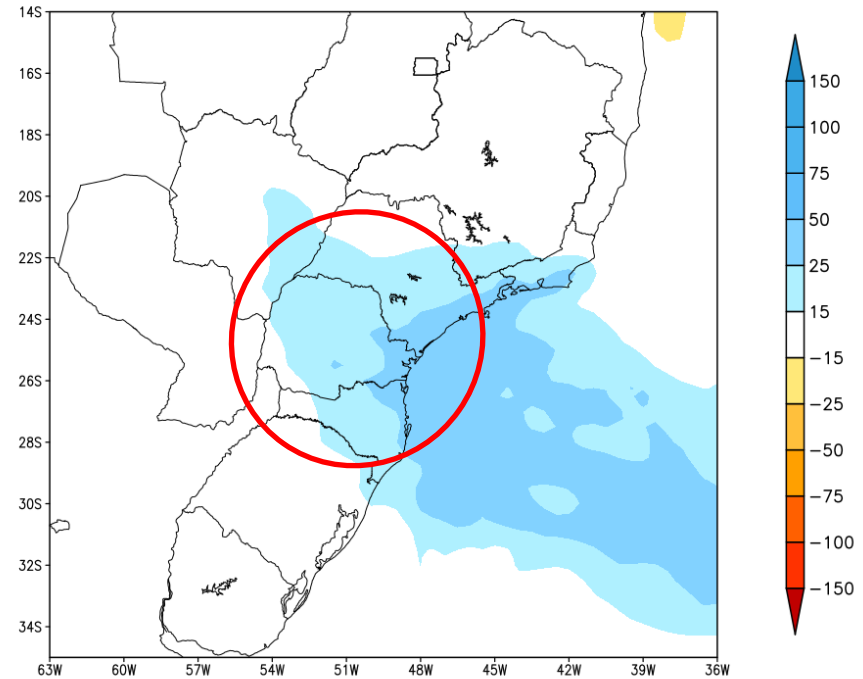


Tendência para a 2ª Semana

GEFS / BRASIL_SUL
Precipitacao acumulada 2aSem (mm)
Previsao das 00Z dia 28/07/2022

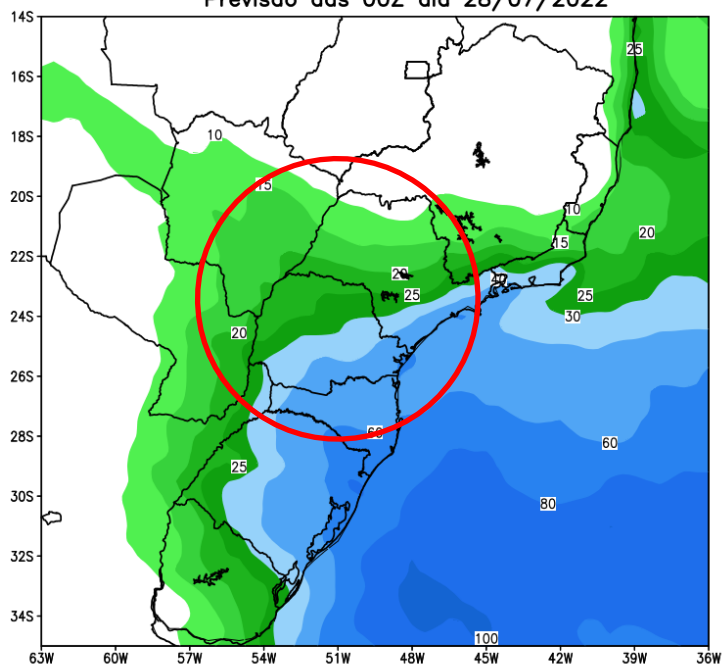


Anomalia de Precipitacao BR_SUL (mm)
Periodo: 2022080500 a 2022081100

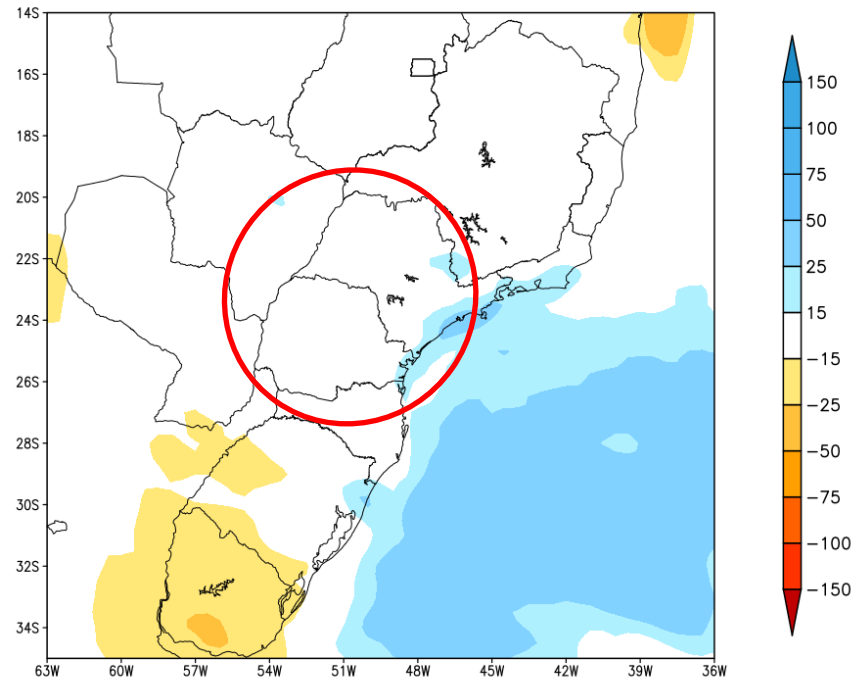


Tendência para as duas próximas semanas

GEFS / BRASIL_SUL
Precipitacao acumulada 14dias (mm)
Previsao das 00Z dia 28/07/2022

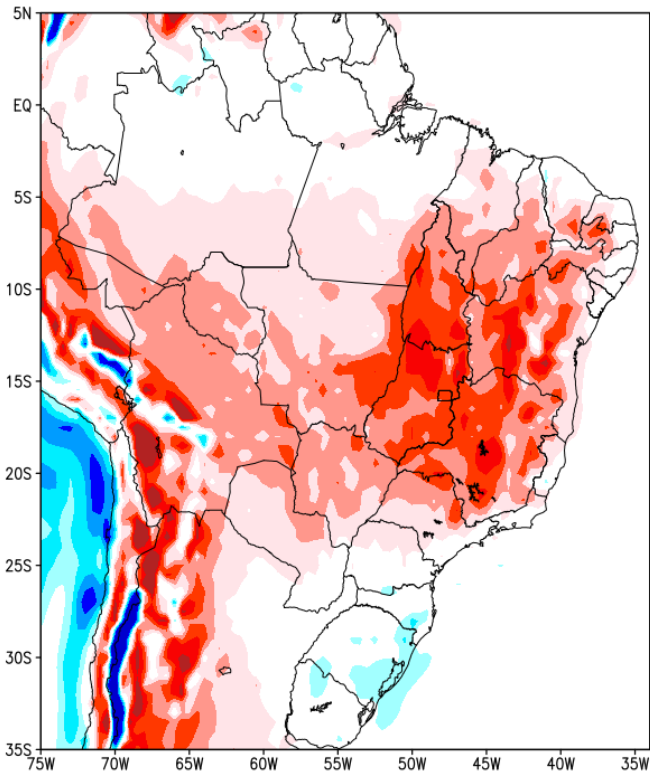


Anomalia de Precipitacao BR_SUL (mm)
Periodo: 2022072800 a 2022081100

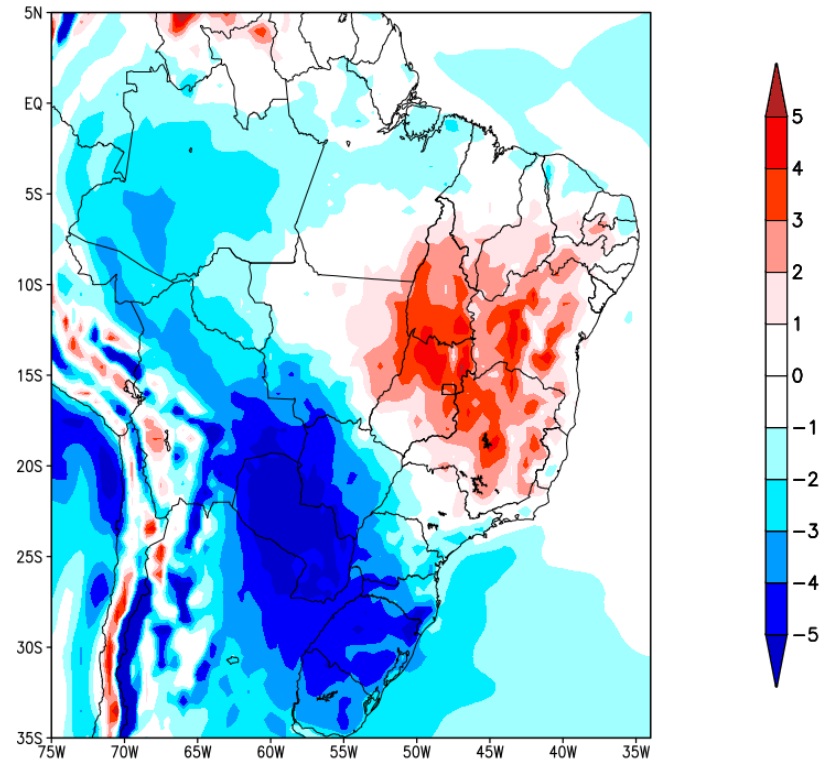


Previsão de temperatura para as duas próximas semanas

Anomalia de Temperatura BR (C)
Período: 2022072800 a 2022080400

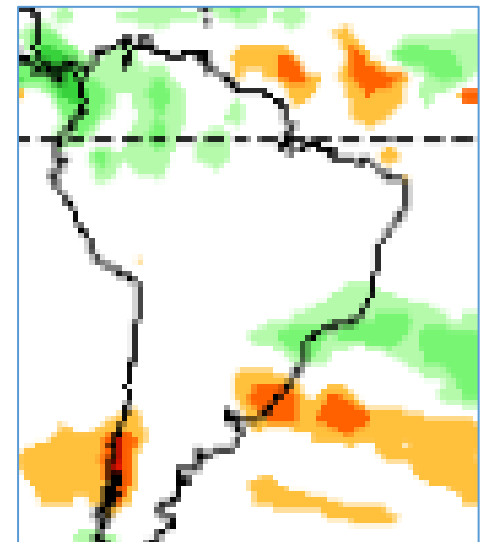
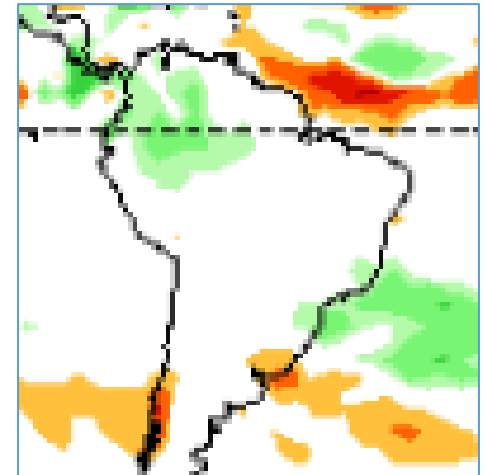
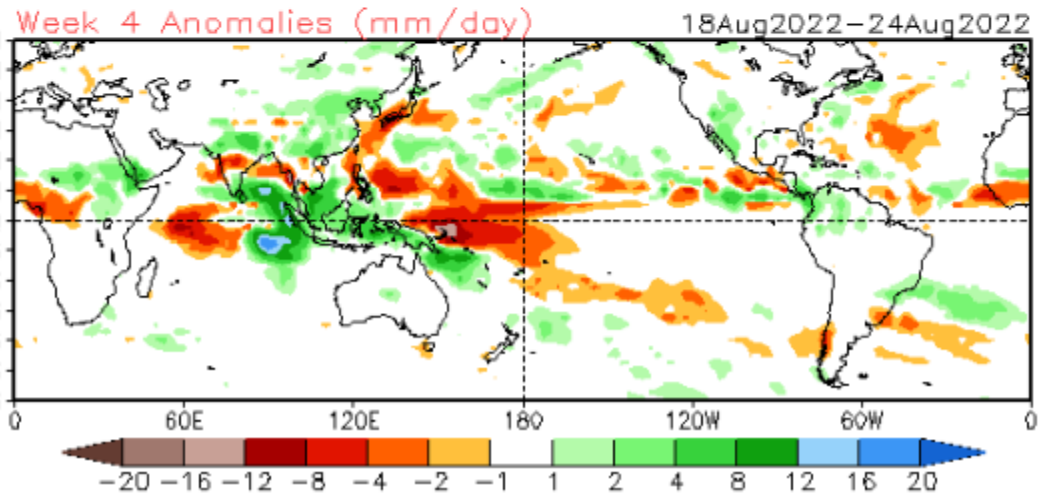
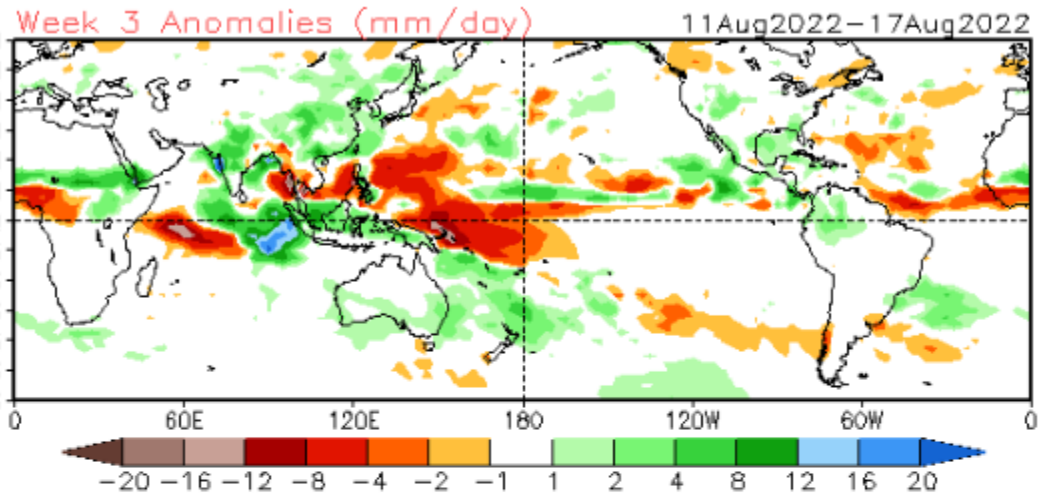


Anomalia de Temperatura BR (C)
Período: 2022080500 a 2022081100



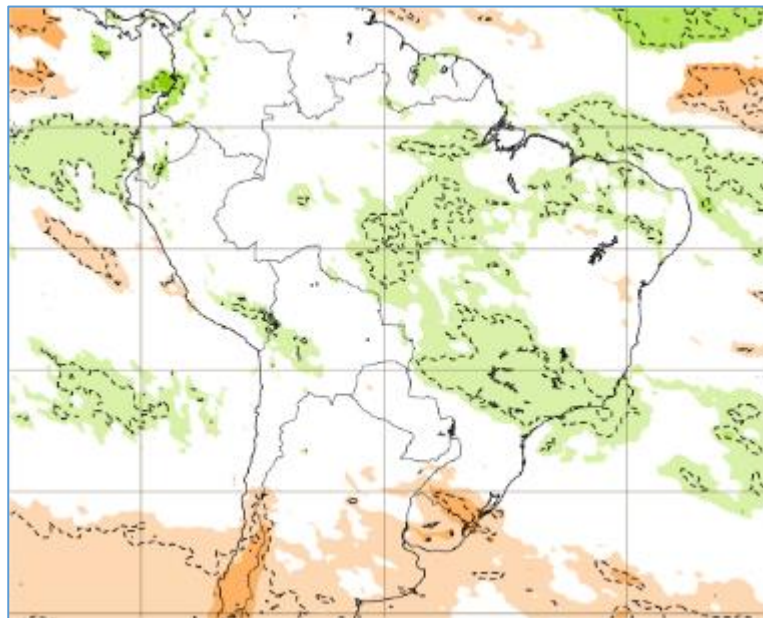
Tendência 3a e 4a semanas

16 Member Ensemble Mean Forecast from 27Jul2022

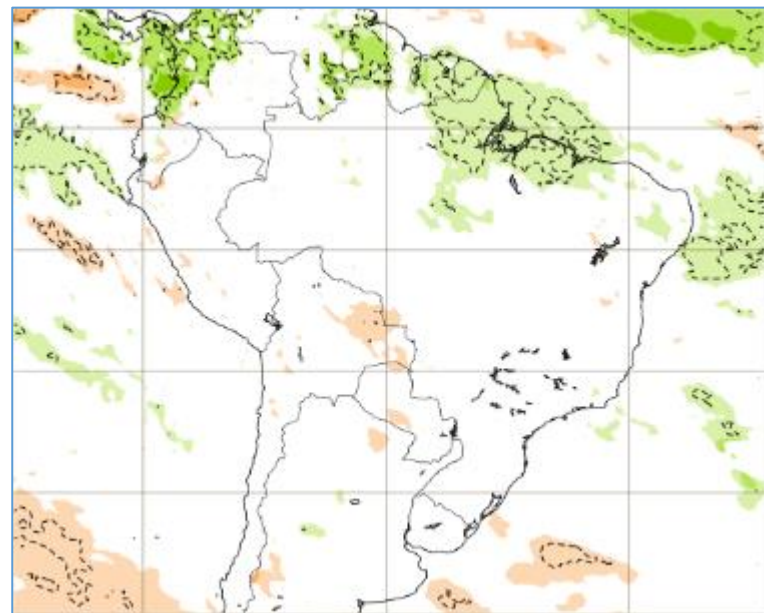


Tendência para 3ª e 4ª semanas

08-15/08

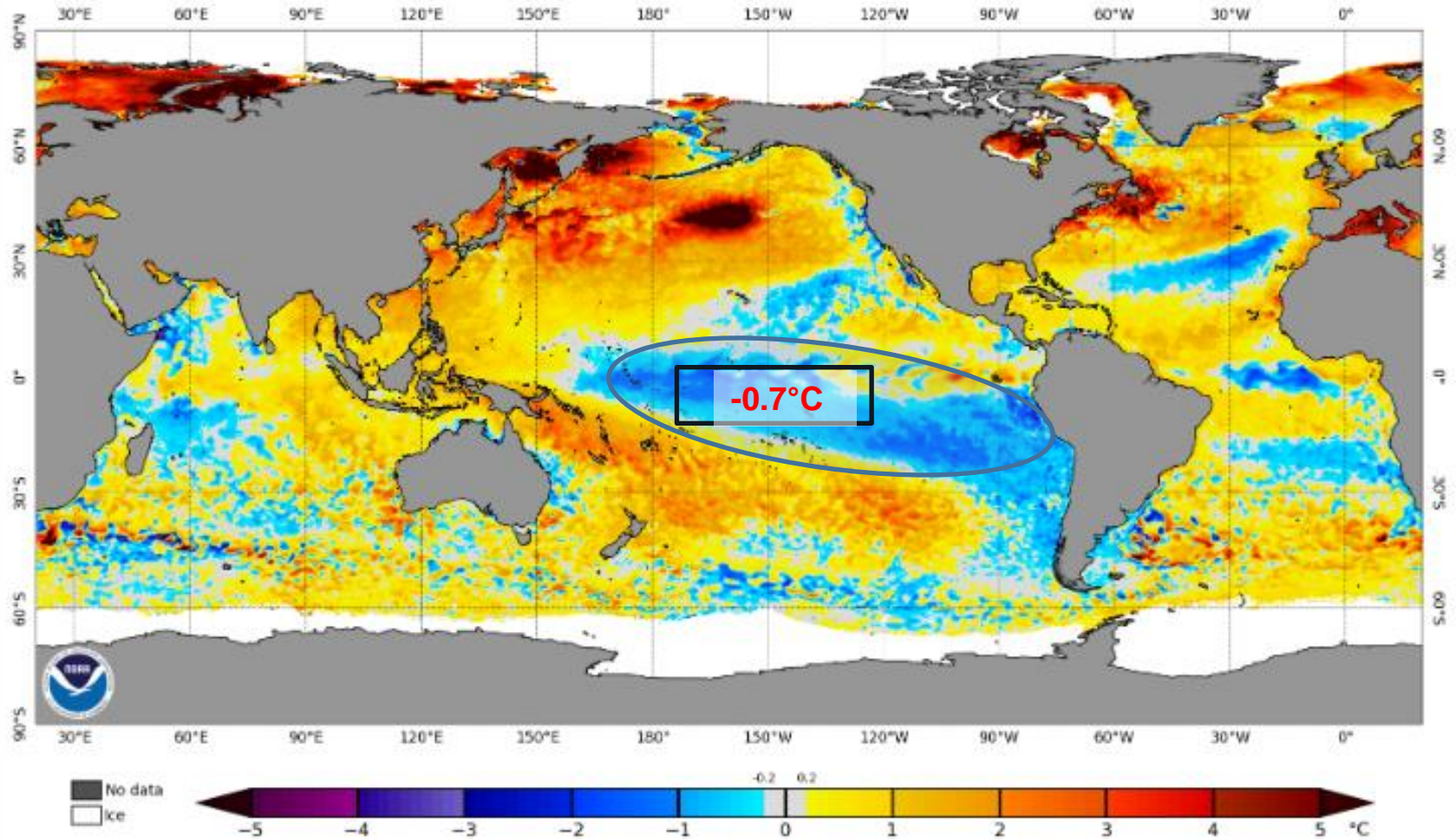


15-22/08



Status Atual: La Niña

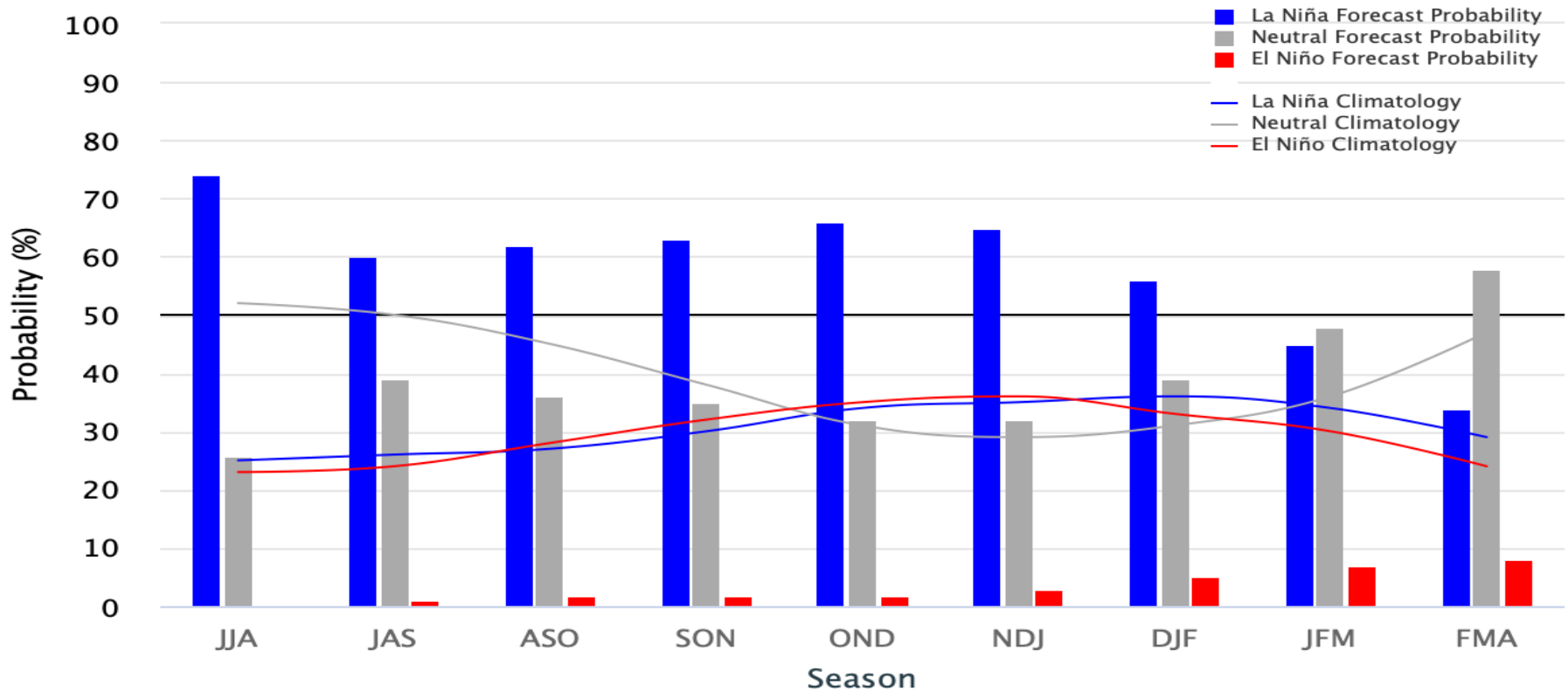
NOAA Coral Reef Watch Daily 5km SST Anomalies (v3.1) 25 Jul 2022



Previsão do “La Niña”

Early-July 2022 CPC/IRI Official Probabilistic ENSO Forecasts

ENSO state based on NINO3.4 SST Anomaly
Neutral ENSO: $-0.5\text{ }^{\circ}\text{C}$ to $0.5\text{ }^{\circ}\text{C}$



Status Atual: **La Niña**

FONTE: NOAA

Previsão sazonal de Chuva (ASO)

