

Monitoramento e Previsões de chuva para a Bacia do Rio Paranapanema

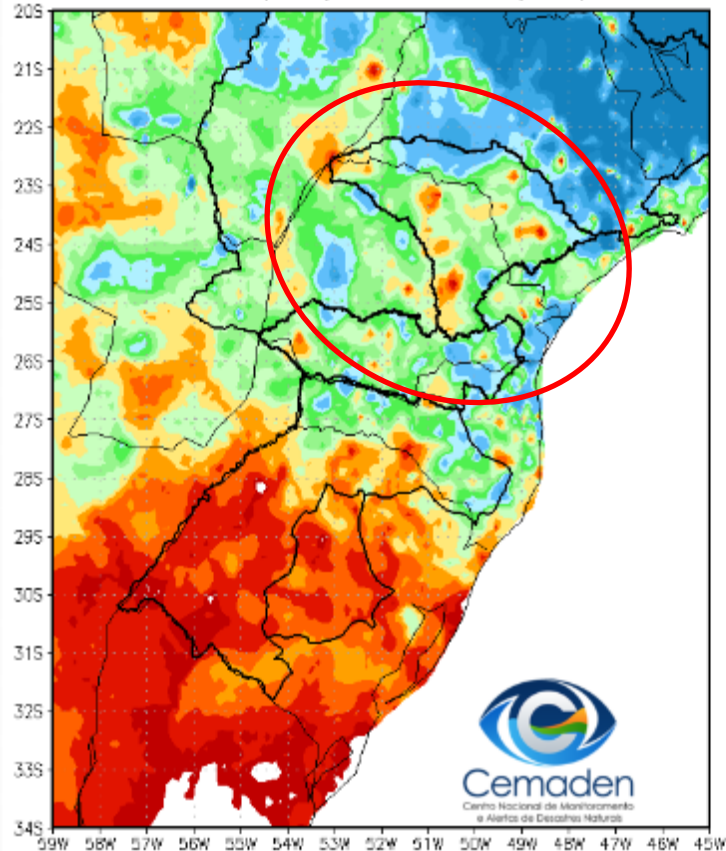


Cemaden
Centro Nacional de Monitoramento
e Alertas de Desastres Naturais

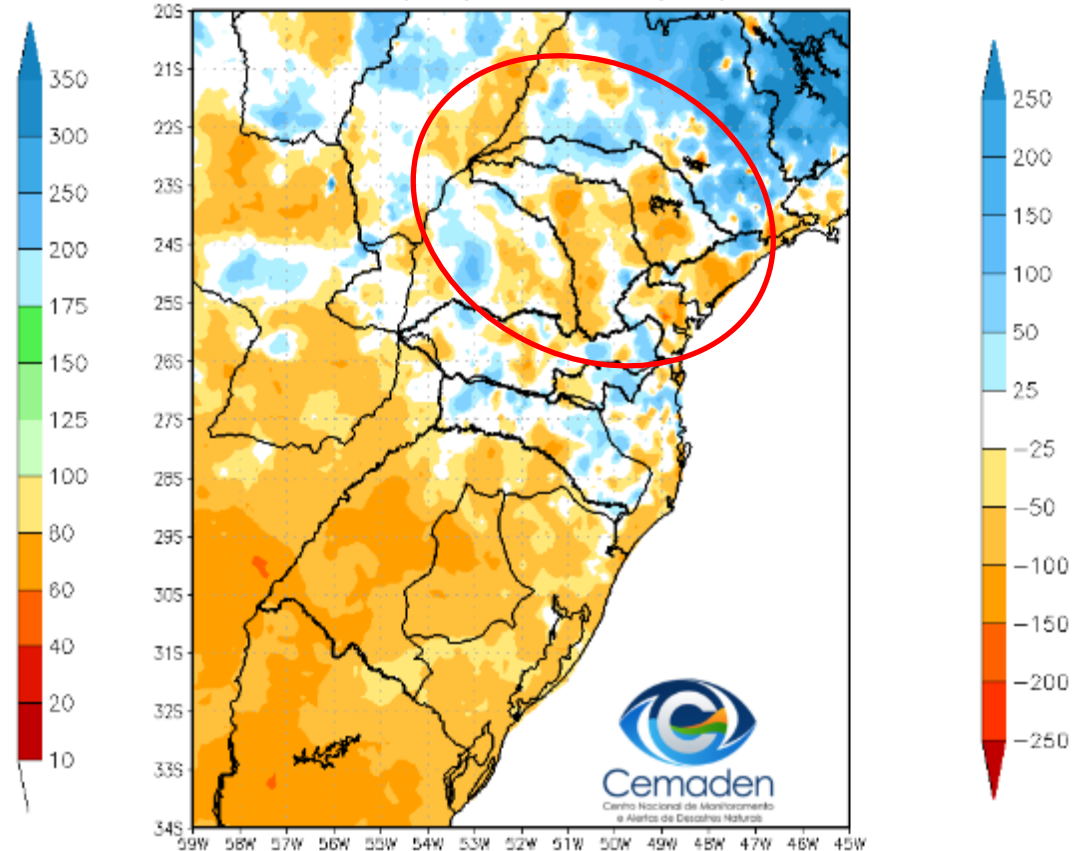
26 de Janeiro de 2023

Precipitação acumulada nos últimos 30 dias

Precipitação Acumulada (mm) A.S.
Período: 26/12/2022 a 25/01/2023

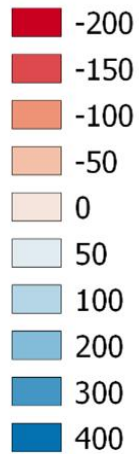
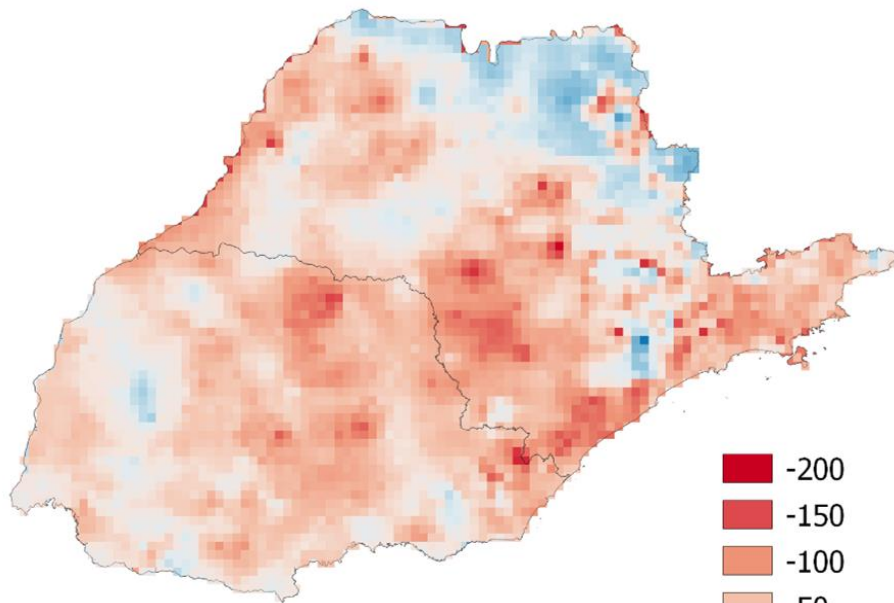


Anomalia de Precipitação (mm) A.S.
Período: 26/12/2022 a 25/01/2023

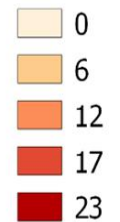
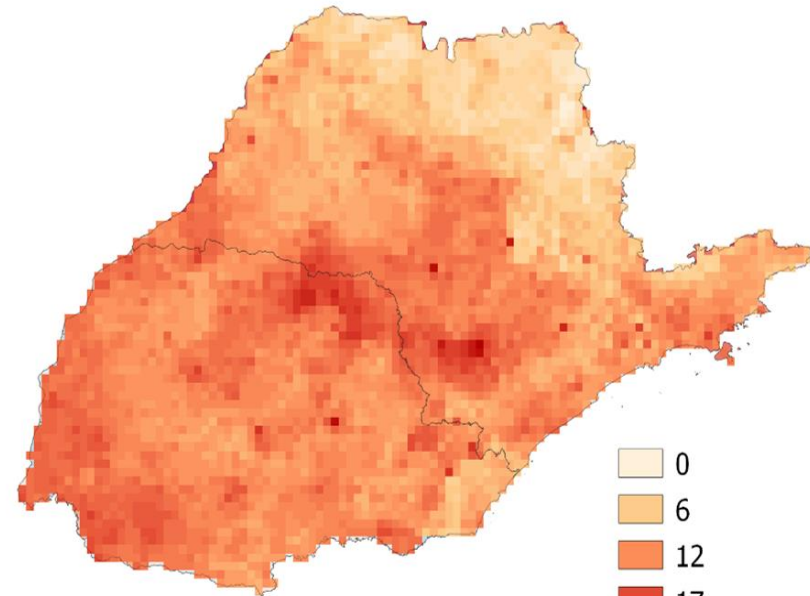


PRECIPITAÇÃO: JANEIRO 2023

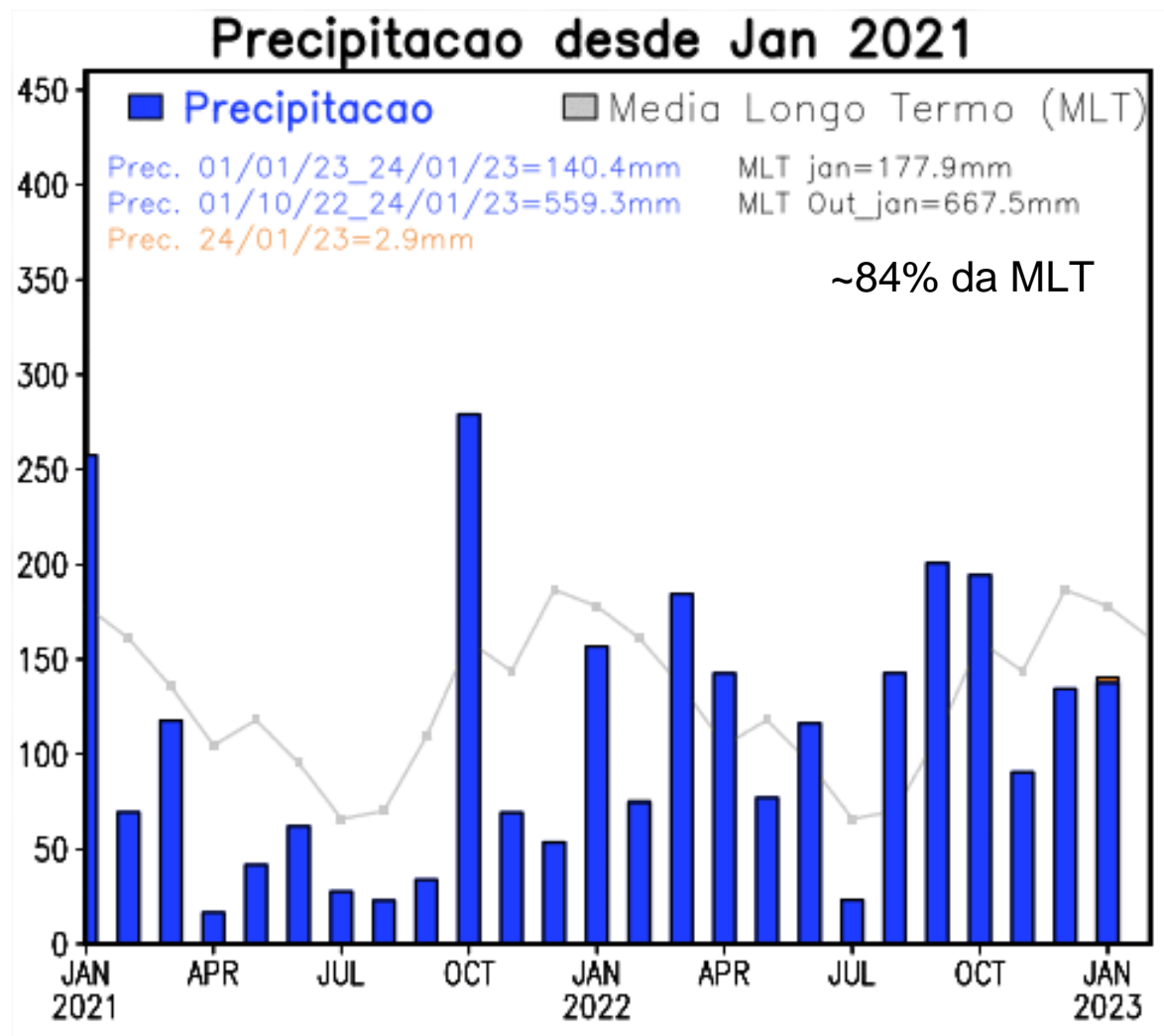
Anomalia (mm)



Total de dias sem chuva

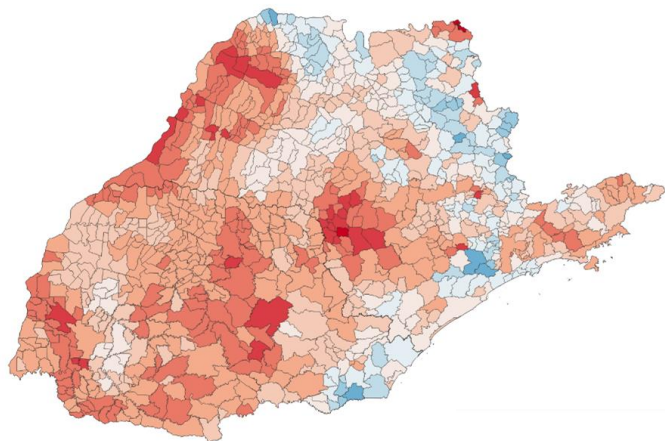


Evolução temporal da precipitação

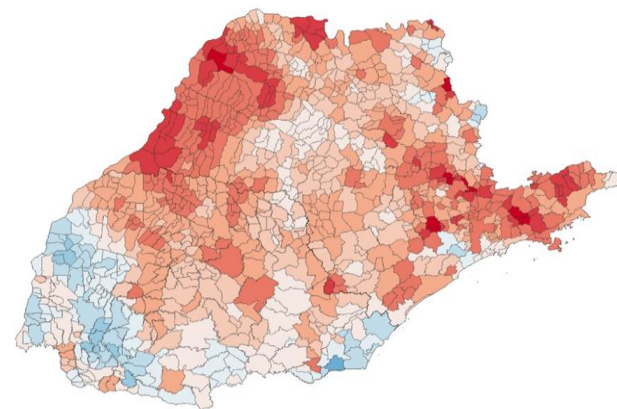


SPI: JANEIRO 2023

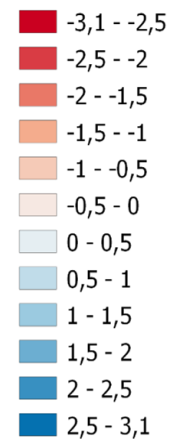
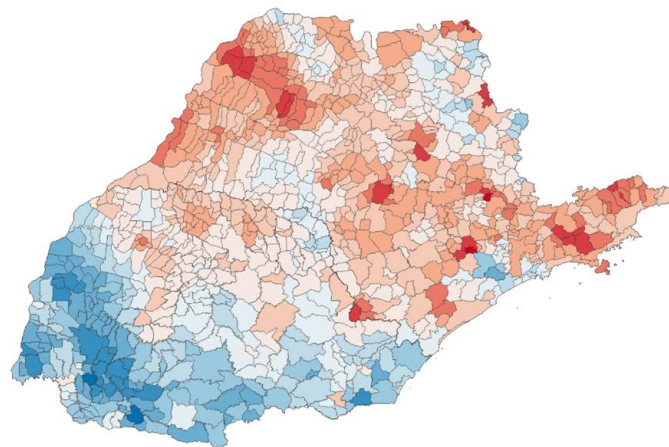
SPI03



SPI24



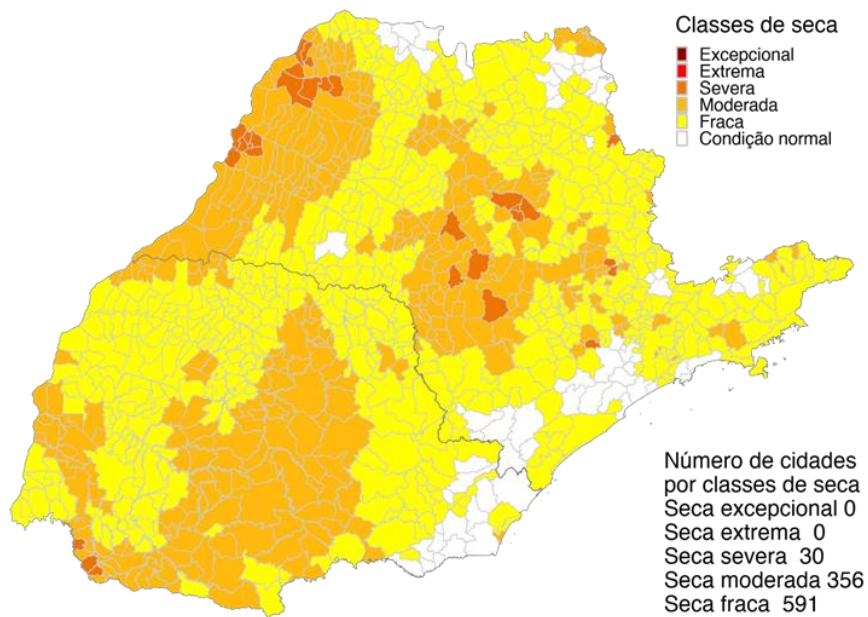
SPI12



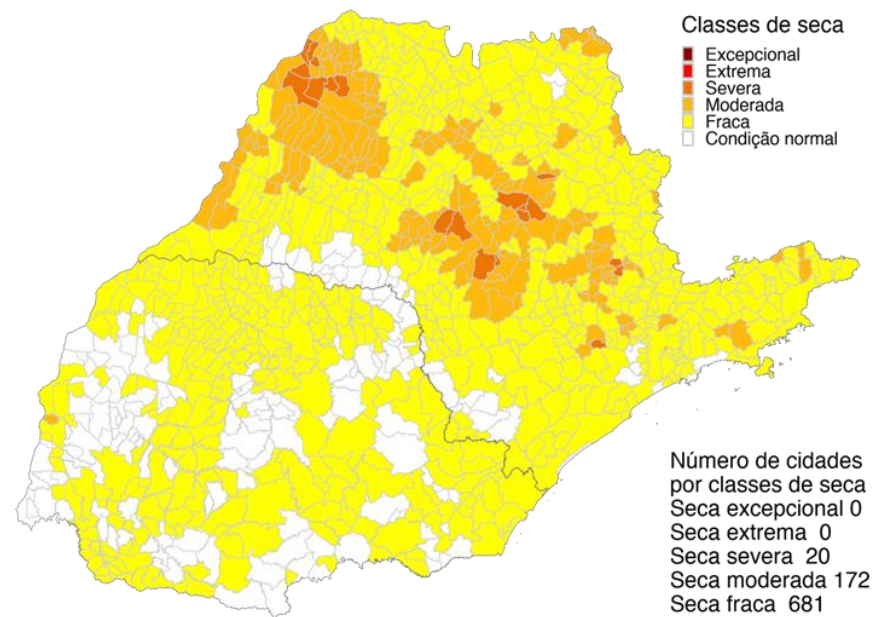
ÍNDICE INTEGRADO DE SECA - IIS

(SPI3 E 6 + VHI + AUS): JANEIRO/2023

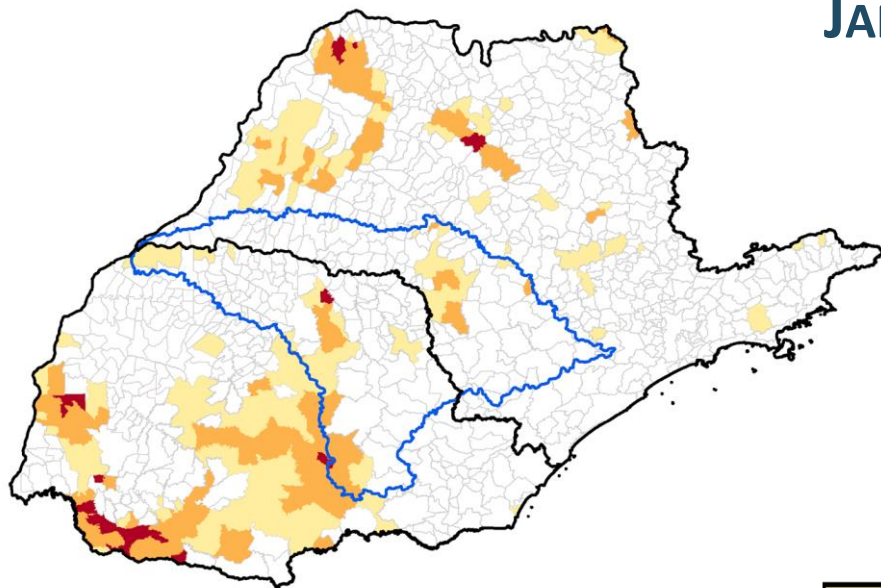
IIS 3 MESES



IIS 6 MESES



ÁREAS DE PASTAGENS E AGRÍCOLAS AFETADAS PELA SECA JAN/23

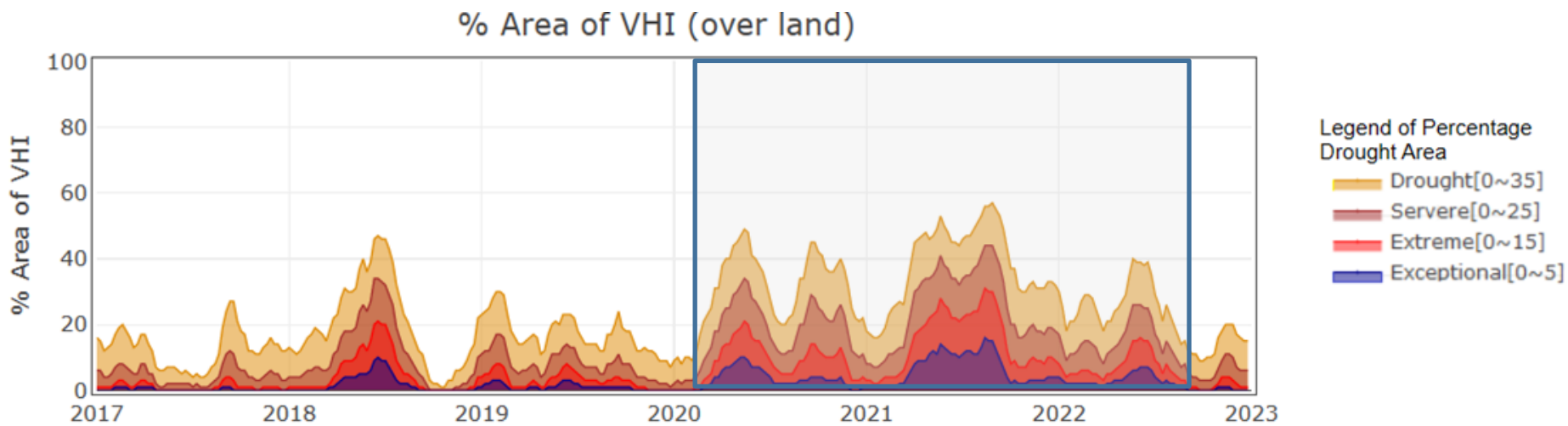


	40 a 60%	60 - 80%	> 80%	Imóveis Rurais Impactados > 40%
Paraná				
Minifundio	39641 (15%)	54187 (21%)	13142 (5%)	106970 (41%)
Pequena Propriedade	22631 (18%)	24311 (19%)	4567 (4%)	51509 (40%)
Media Propriedade	5255 (20%)	3425 (13%)	308 (1%)	8988 (33%)
São Paulo				
Minifundio	20729(11%)	17946 (9%)	2244 (1%)	40919 (21%)
Pequena Propriedade	11413 (11%)	9410 (9%)	760 (1%)	21583 (20%)
Media Propriedade	3742 (10%)	2338 (6%)	150 (*)	6230 (17%)

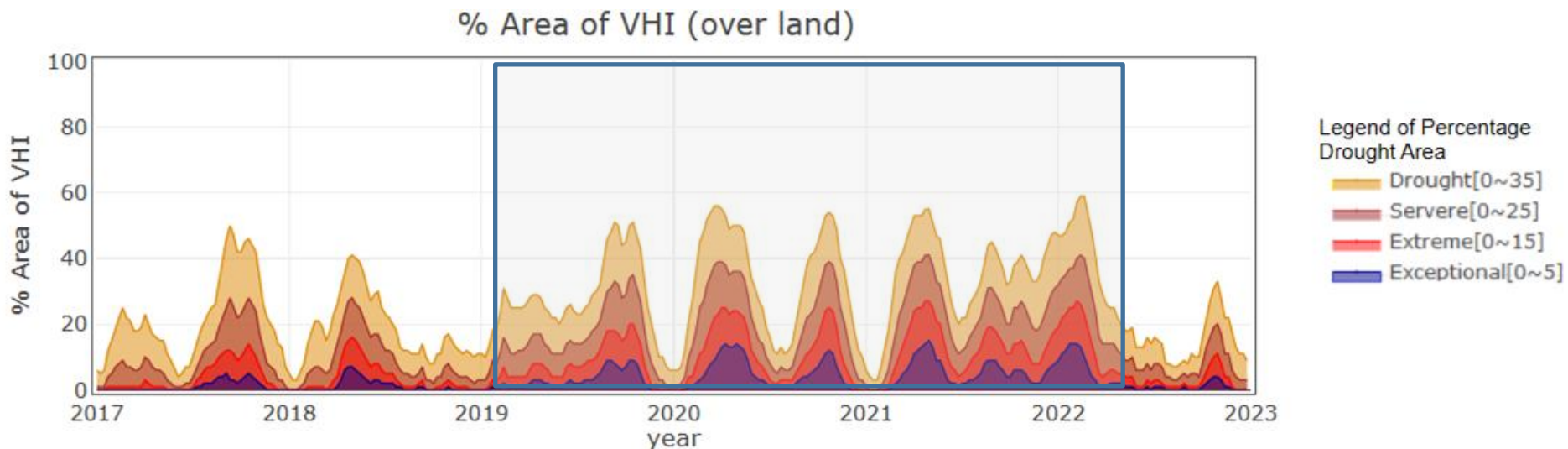
(*) Porcentagem inferior a 1%.

PERCENTAGEM DE ÁREA EM CONDIÇÃO DE SECA

São Paulo



Paraná



ÍNDICE INTEGRADO DE SECA - CENÁRIOS

(SPI3 E 6 + VHI + AUS): JANEIRO/2023

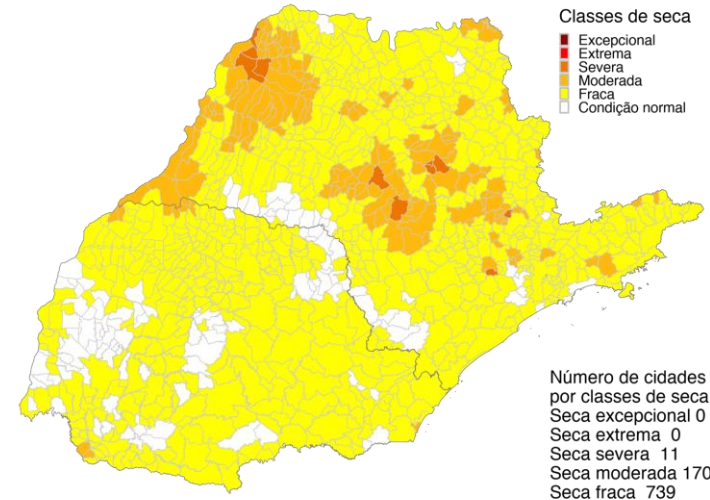
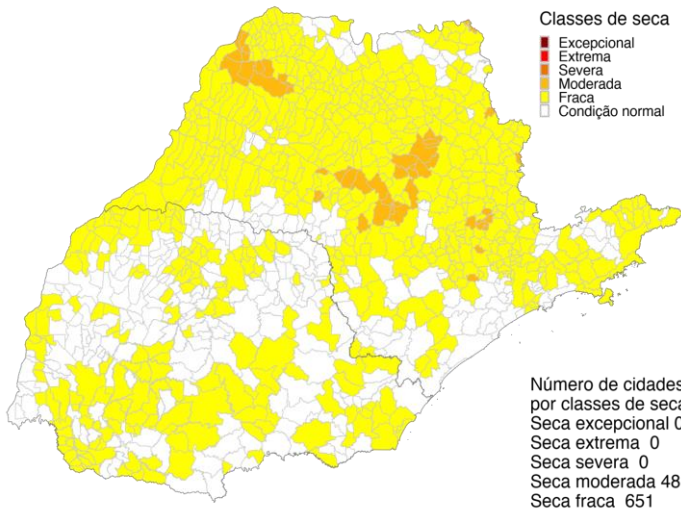
CHUVA 30% ACIMA DA MÉDIA

Fevereiro/23

CHUVA 30% ABAIXO DA MÉDIA

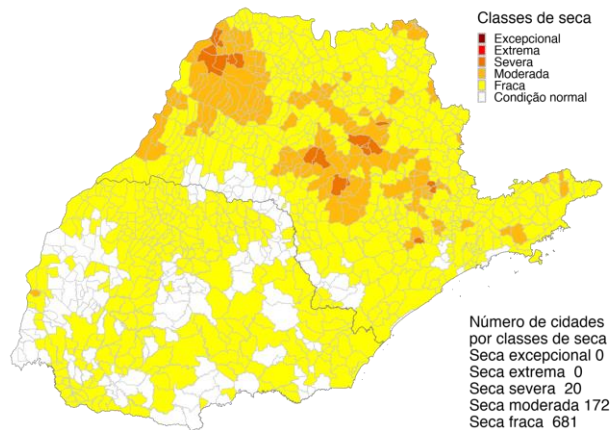
IIS

- Seca Excepcional
- Seca Extrema
- Seca Severa
- Seca Moderada
- Seca Fraca
- Normal

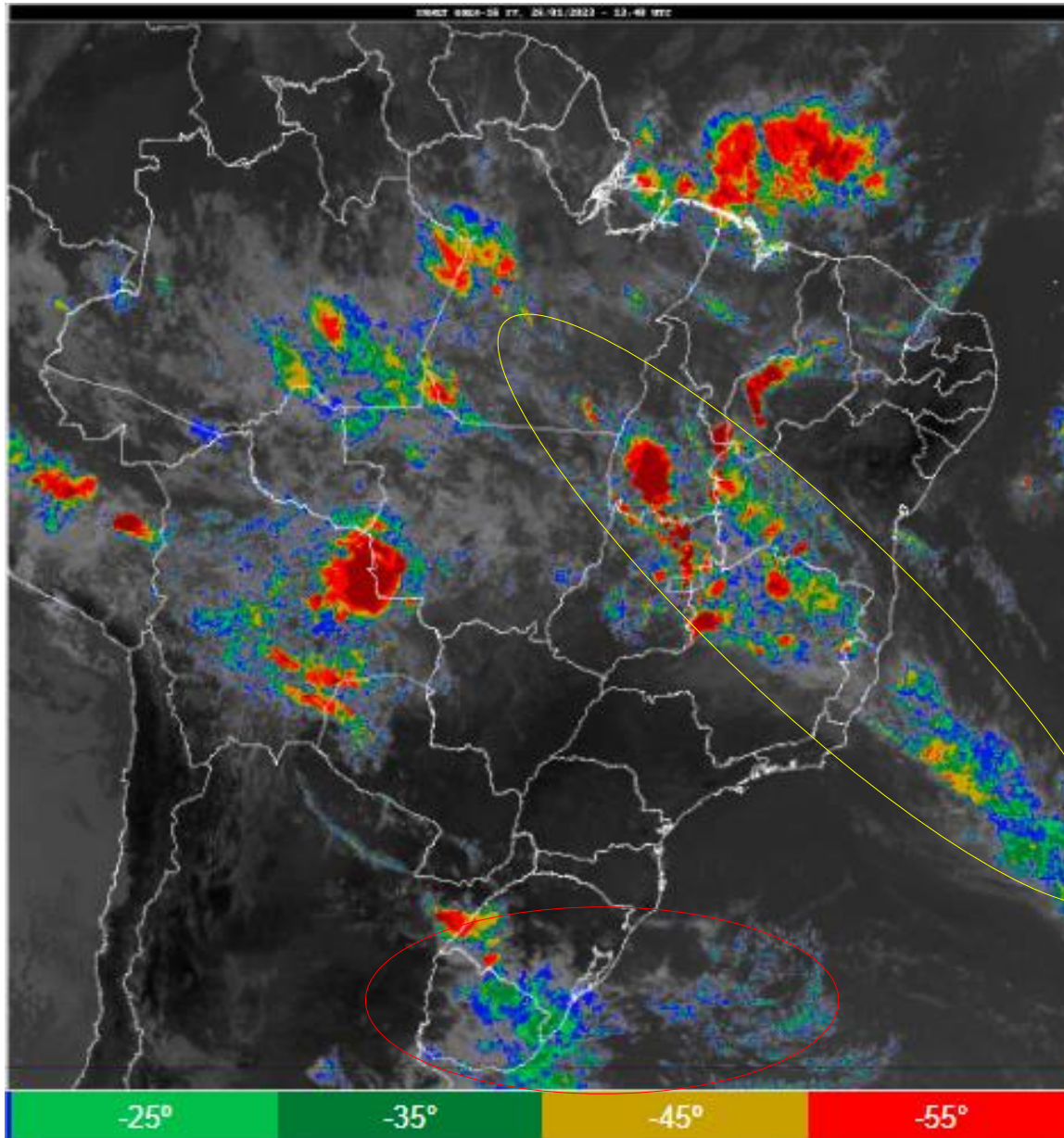


IIS OBSERVADO (IIS6)

Janeiro/23



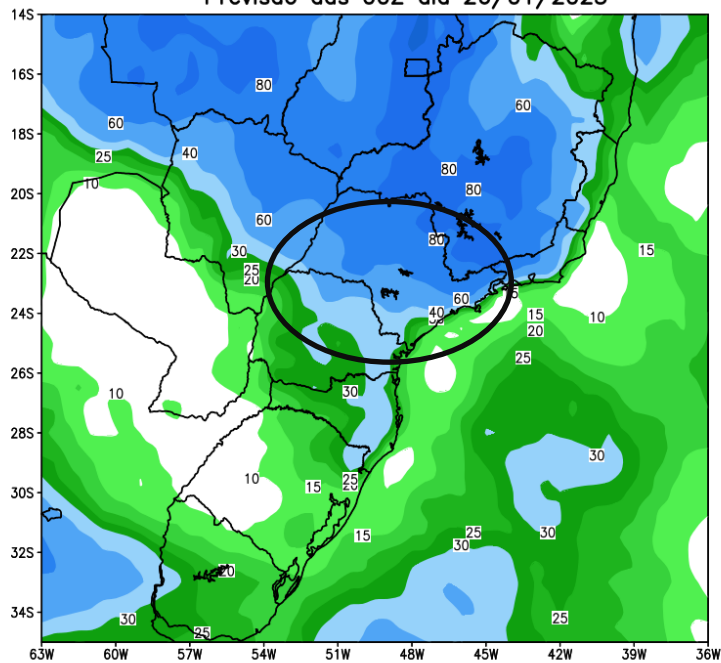
Situação meteorológica atual



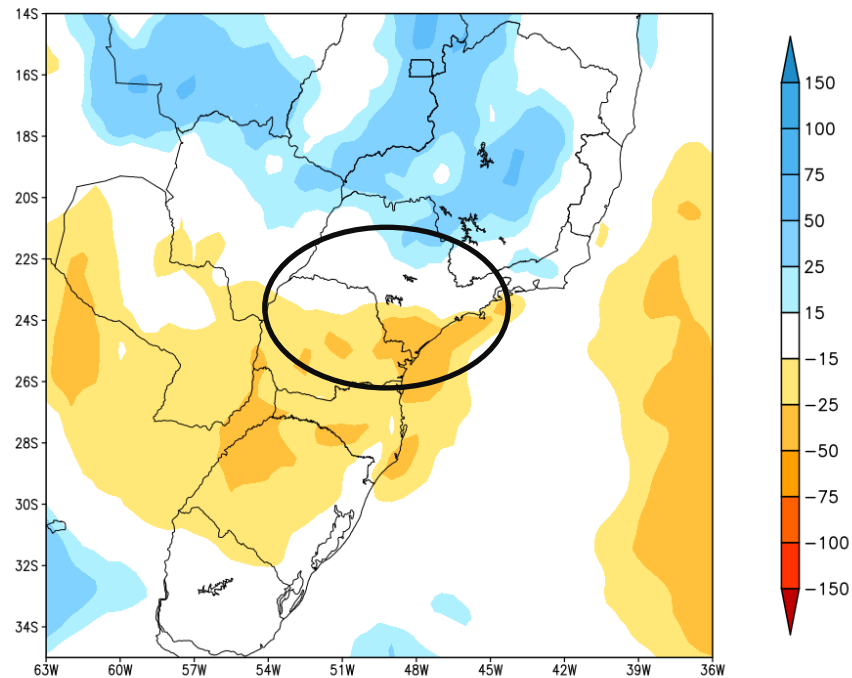
Fonte: INMET

Previsão de chuva próximos 7 dias

GEFS / BRASIL_SUL
Precipitacao acumulada 1aSem (mm)
Previsao das 00Z dia 26/01/2023



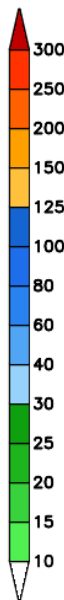
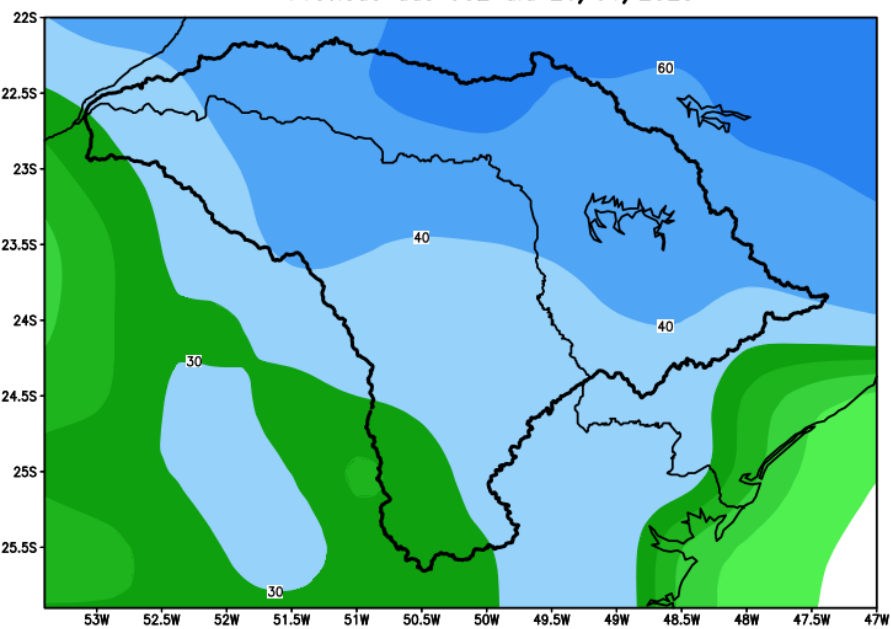
Anomalia de Precipitacao BR_SUL (mm)
Periodo: 2023012600 a 2023020200



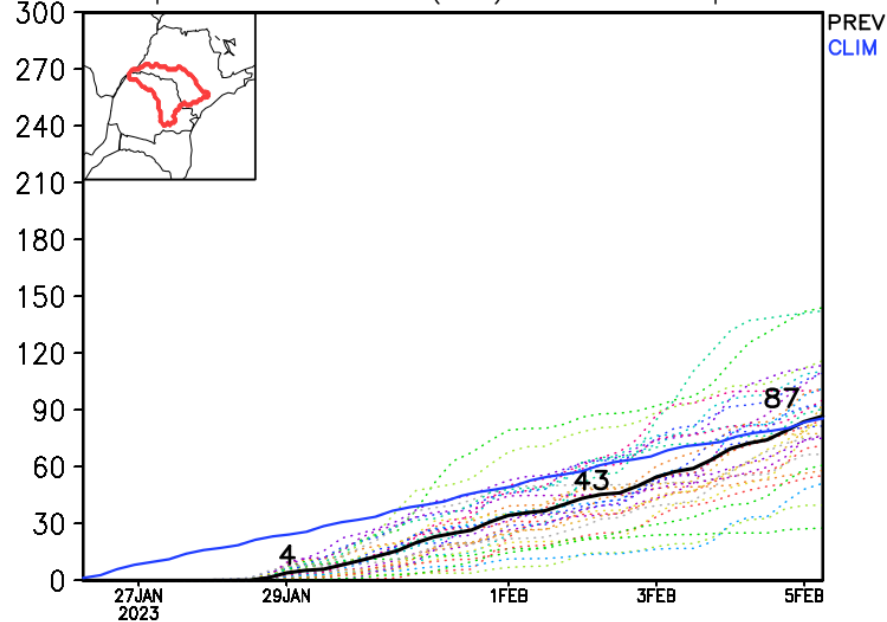
MODELO GFS

Previsão para a bacia do rio Paranapanema

GEFS / Bacia do Rio Paranapanema
Precipitação acumulada em 7 dias (mm)
Previsão das 00Z dia 26/01/2023

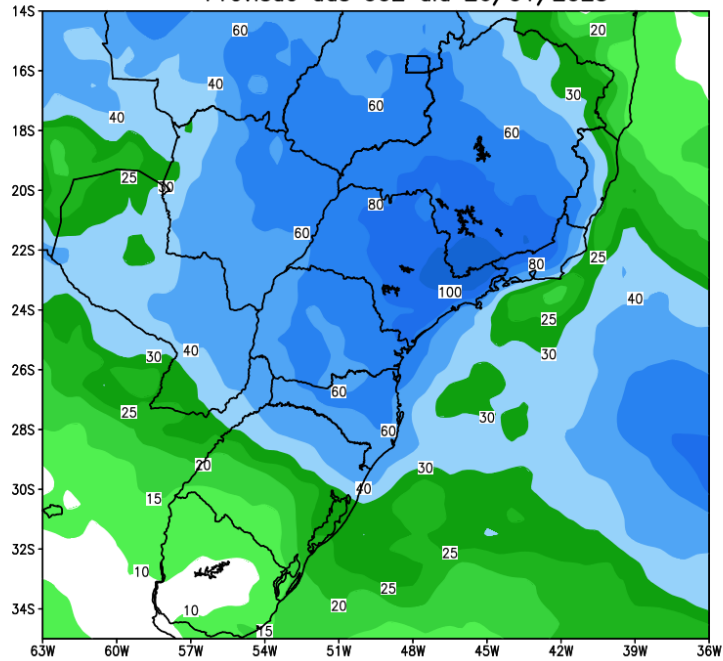


Precipitação acumulada (mm): Bacia Paranapanema

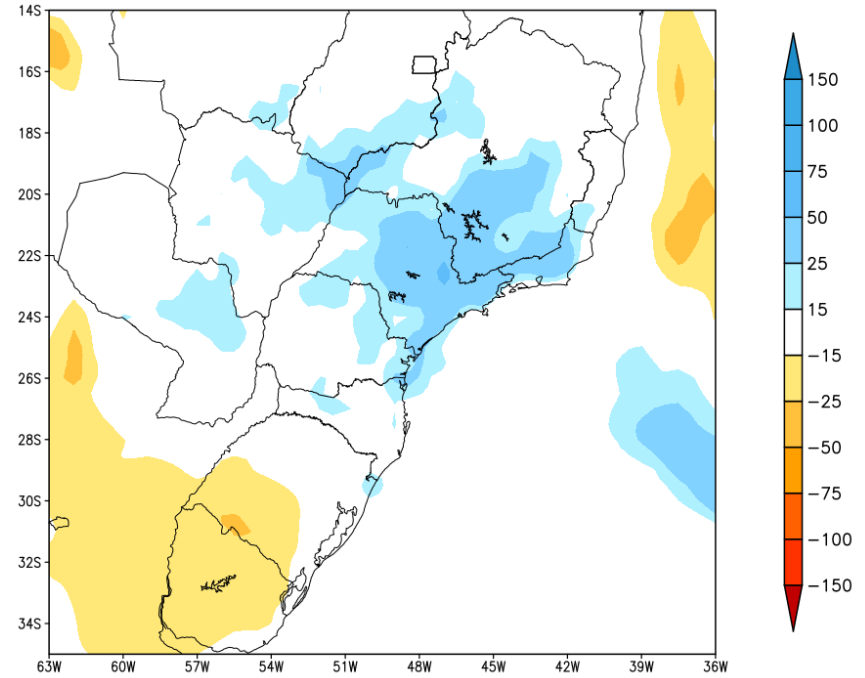


Tendência para a segunda semana

GEFS / BRASIL_SUL
Precipitacao acumulada 2aSem (mm)
Previsao das 00Z dia 26/01/2023



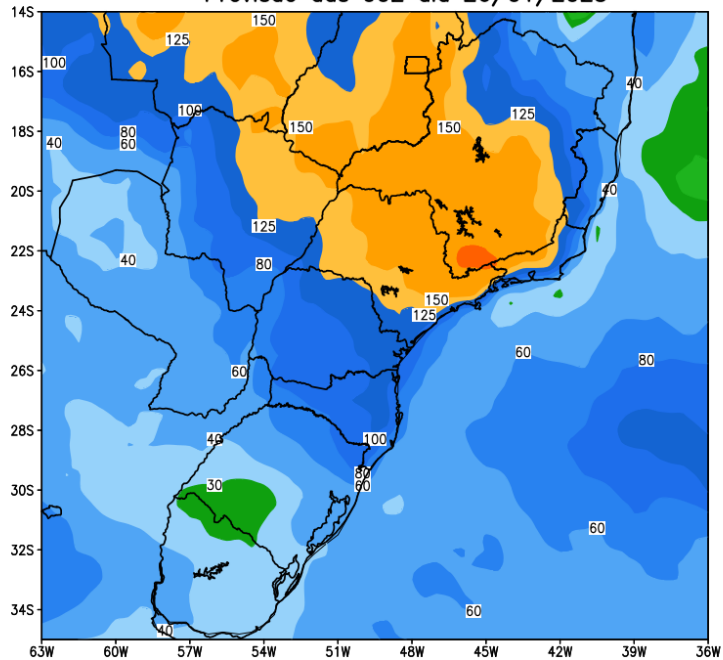
Anomalia de Precipitacao BR_SUL (mm)
Periodo: 2023020300 a 2023020900



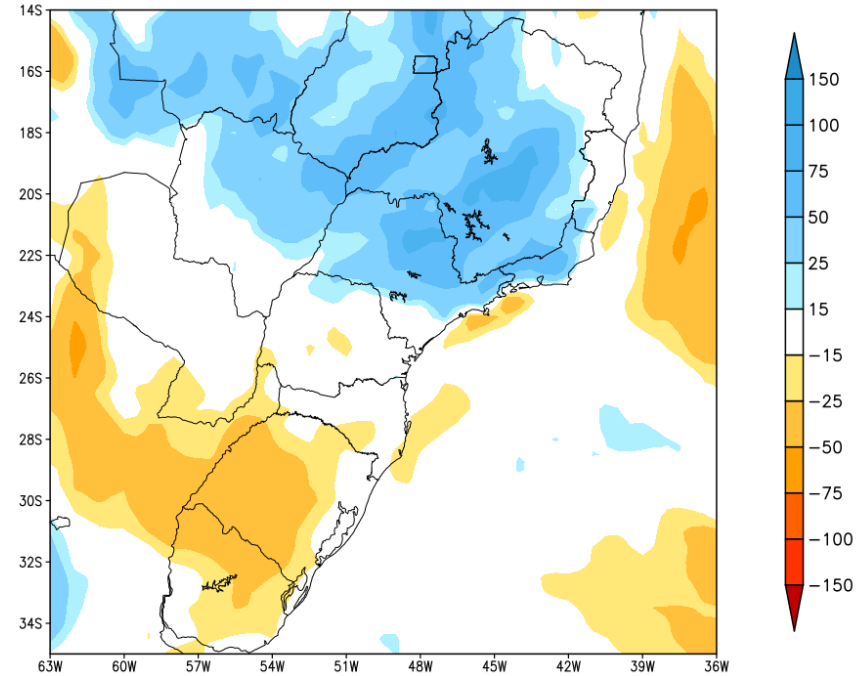
MODELO GFS

Tendência para as duas próximas semanas

GEFS / BRASIL_SUL
Precipitacao acumulada 14 dias (mm)
Previsao das 00Z dia 26/01/2023



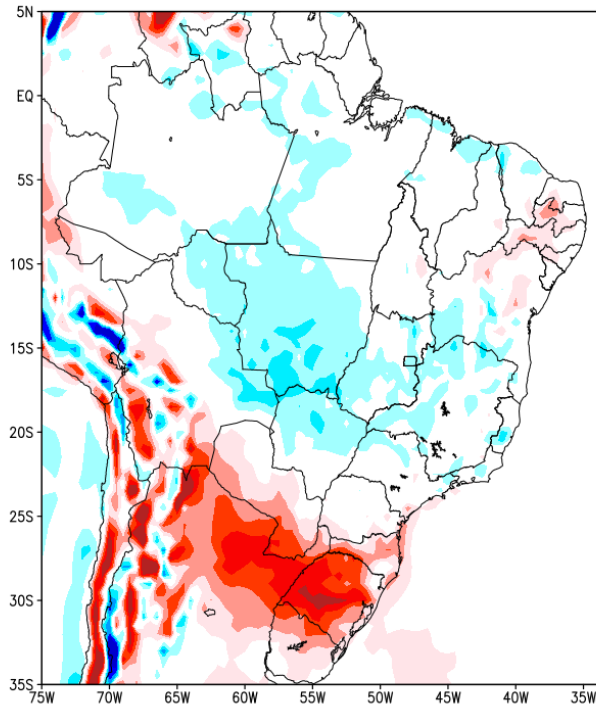
Anomalia de Precipitacao BR_SUL (mm)
Periodo: 2023012600 a 2023020900



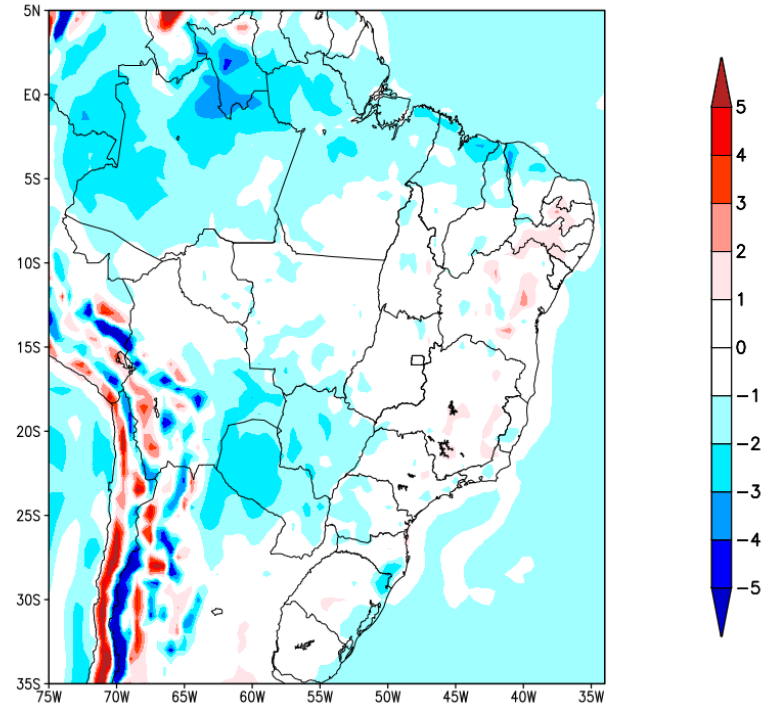
MODELO GFS

Previsão de Temperatura

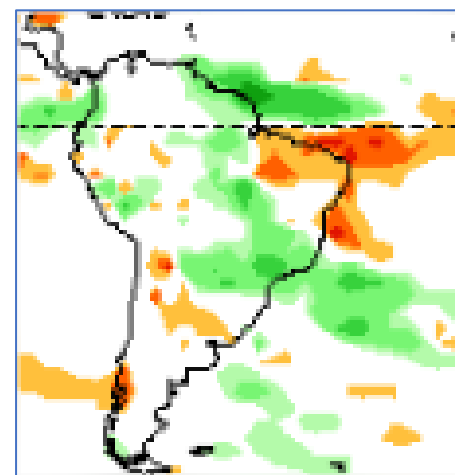
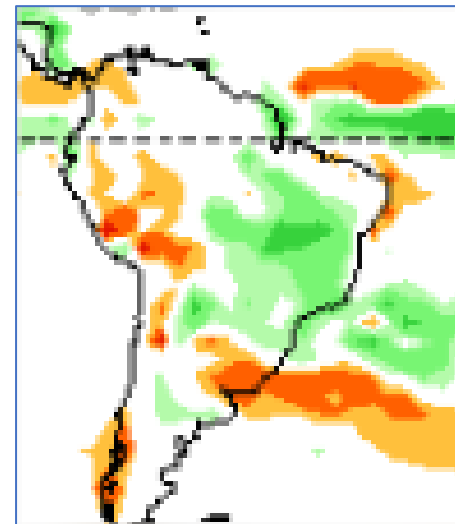
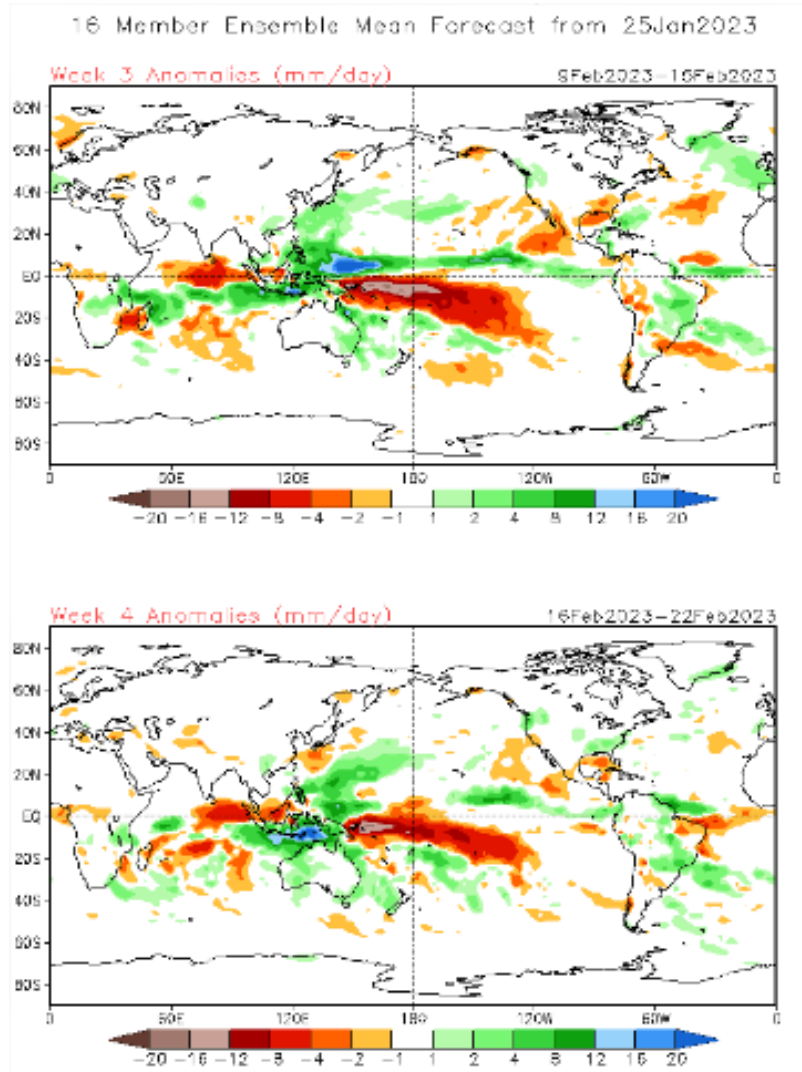
Anomalia de Temperatura BR (C)
Período: 2023012600 a 2023020200



Anomalia de Temperatura BR (C)
Período: 2023020300 a 2023020900

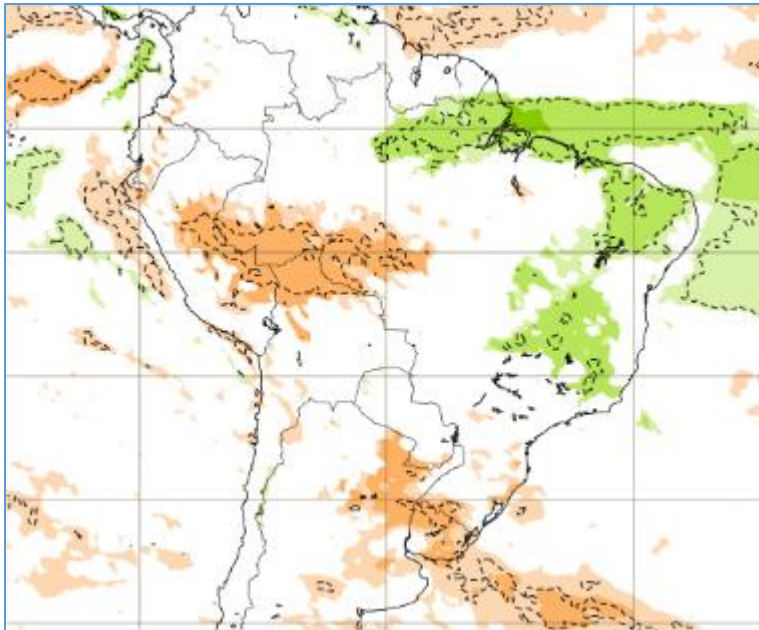


Tendência 3a e 4a semanas

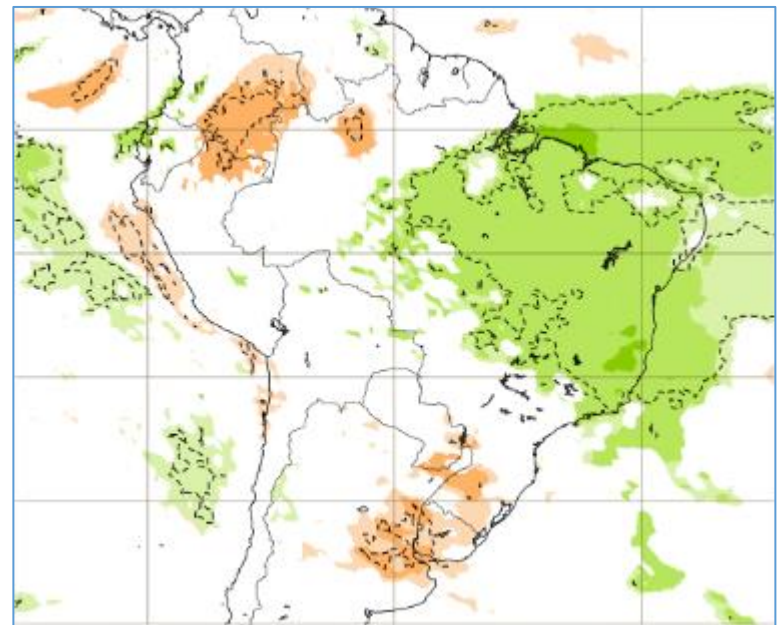


Tendência para 3ª e 4ª semanas

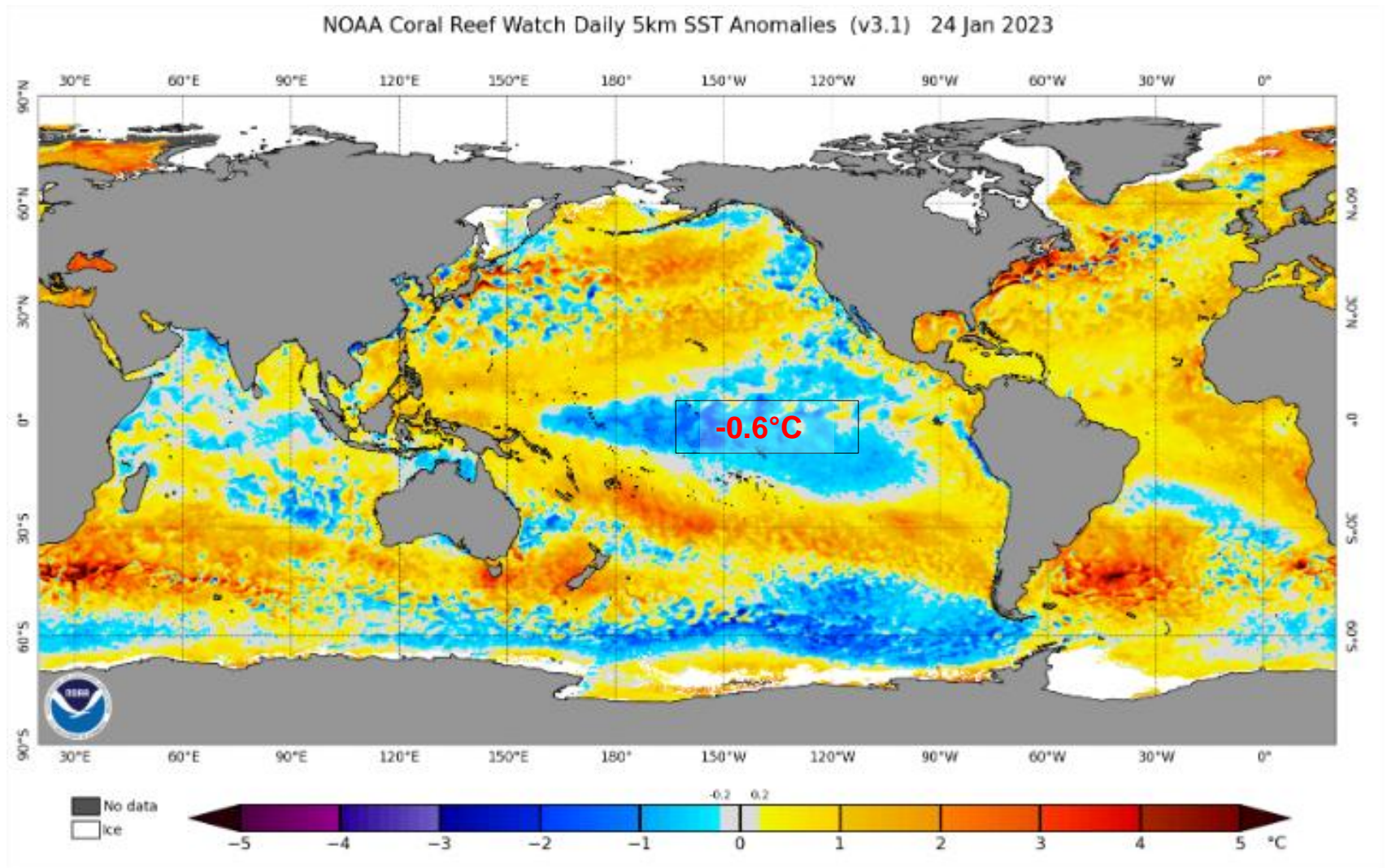
06-13/02



13-20/02



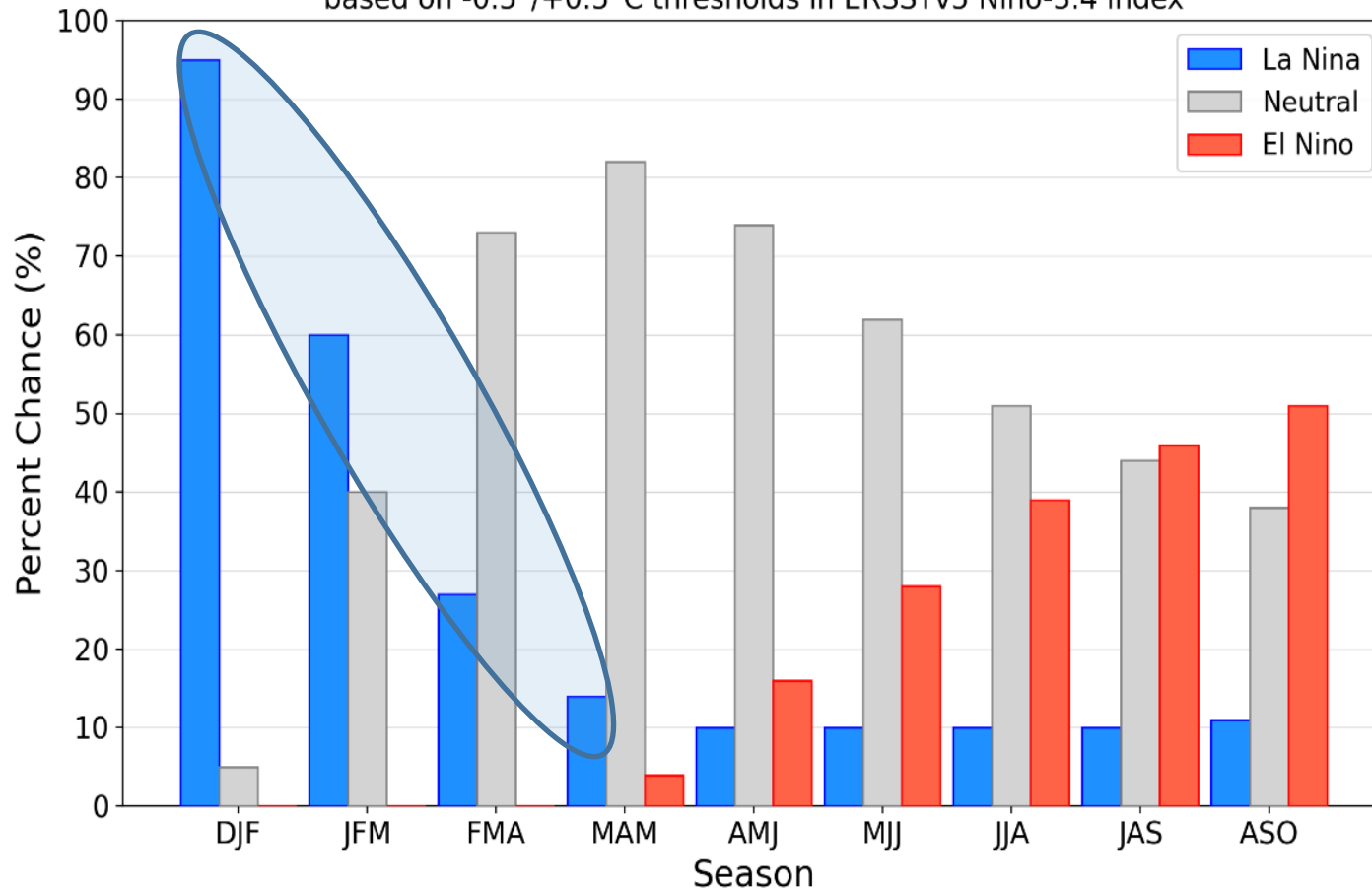
Status Atual: La Niña



Previsão do “La Niña”

Official NOAA CPC ENSO Probabilities (issued Jan. 2023)

based on $-0.5^{\circ}/+0.5^{\circ}\text{C}$ thresholds in ERSSTv5 Niño-3.4 index



Status Atual: **La Niña**

FONTE: NOAA

Previsão sazonal de Chuva FMA

