

Monitoramento e Previsões de chuva para a Bacia do Rio Paranapanema

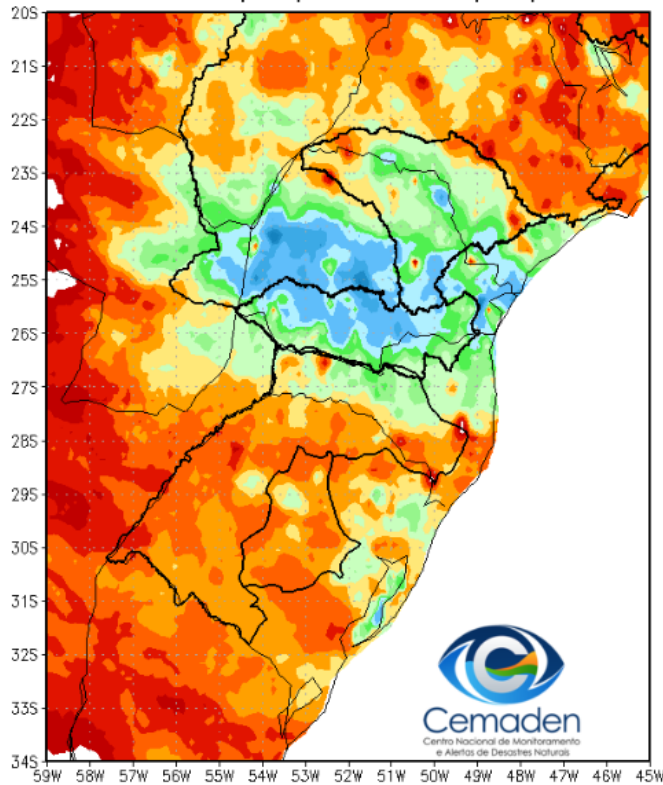


Cemaden
Centro Nacional de Monitoramento
e Alertas de Desastres Naturais

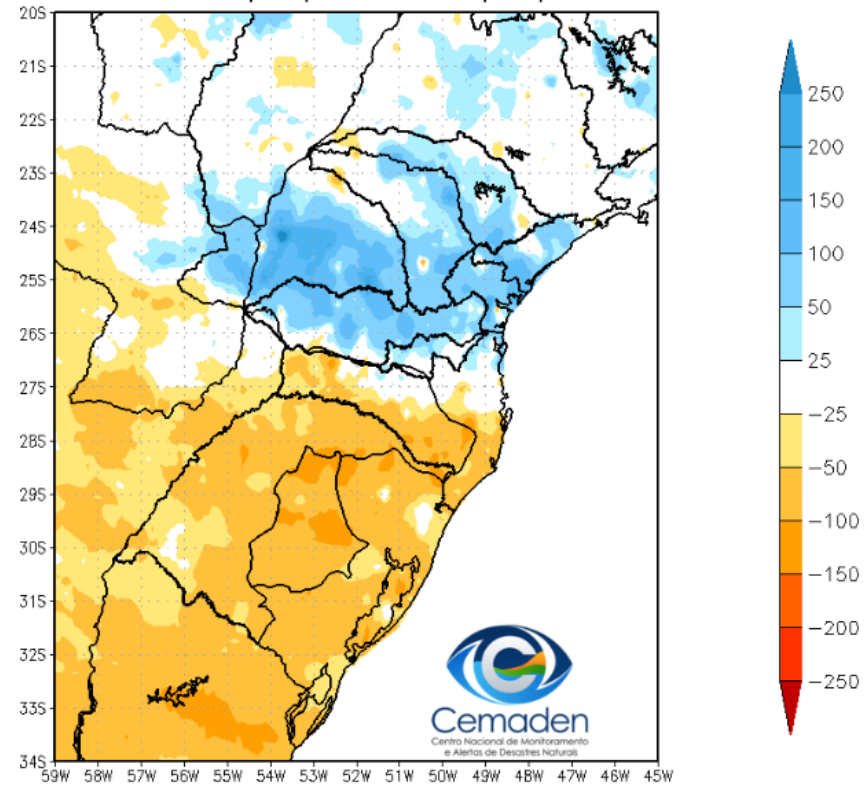
28 de Setembro de 2022

Precipitação acumulada: últimos 30 dias

Precipitação Acumulada (mm) A.S.
Período: 28/08/2022 a 27/09/2022

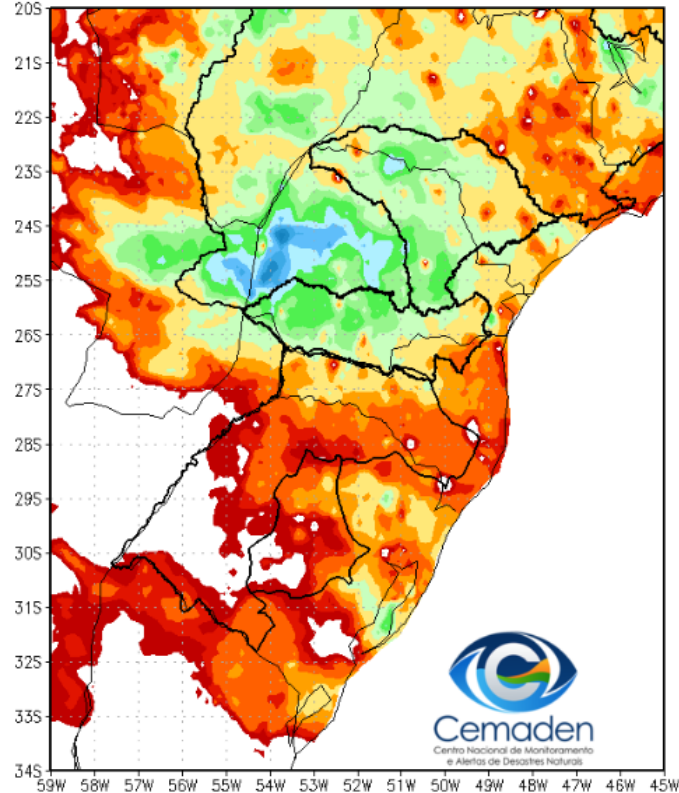


Anomalia de Precipitação (mm) A.S.
Período: 28/08/2022 a 27/09/2022

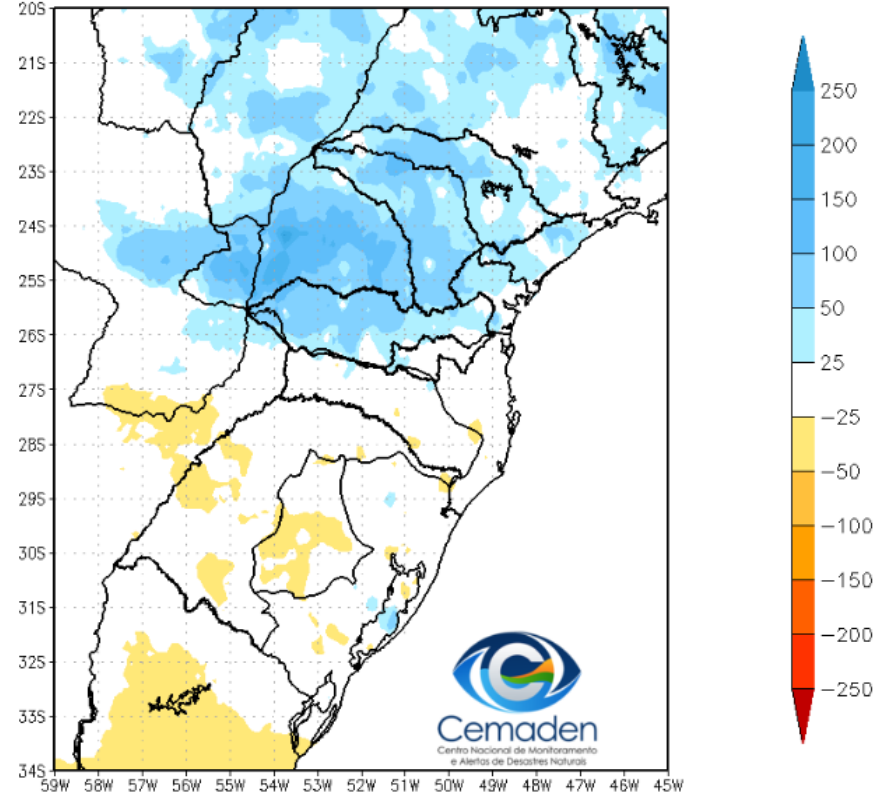


Precipitação acumulada: últimos 07 dias

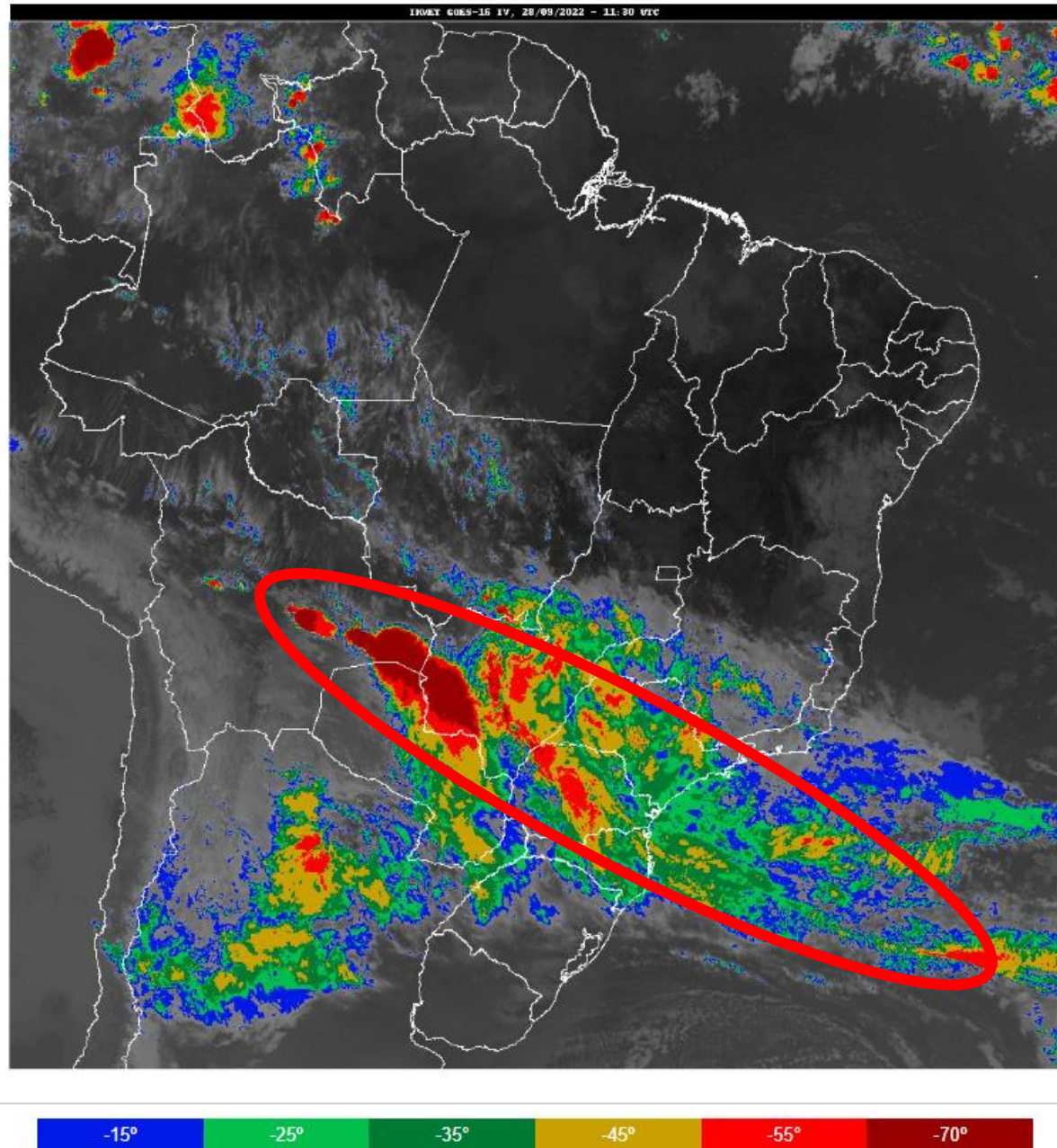
Precipitacao Acumulada (mm) A.S.
Período: 20/09/2022 a 27/09/2022



Anomalia de Precipitacao (mm) A.S.
Período: 20/09/2022 a 27/09/2022

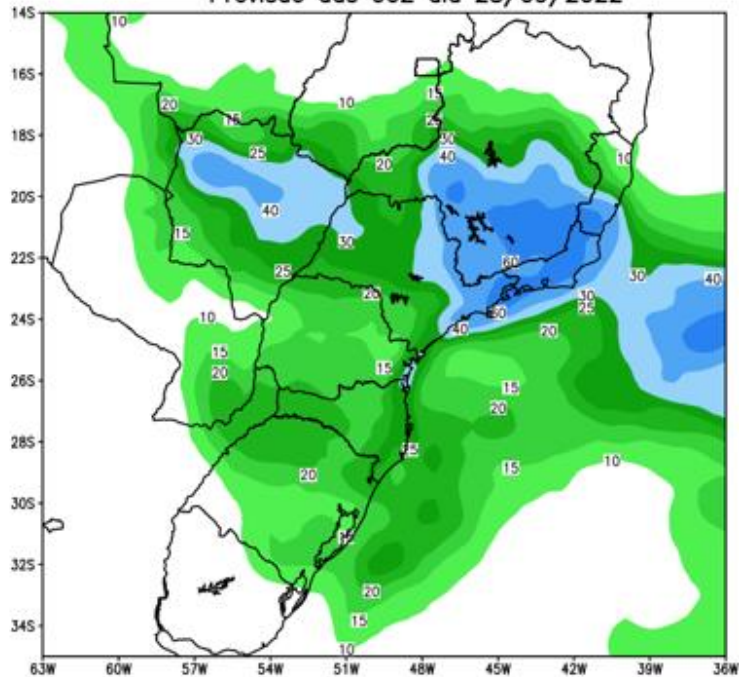


Situação Meteorológica Atual

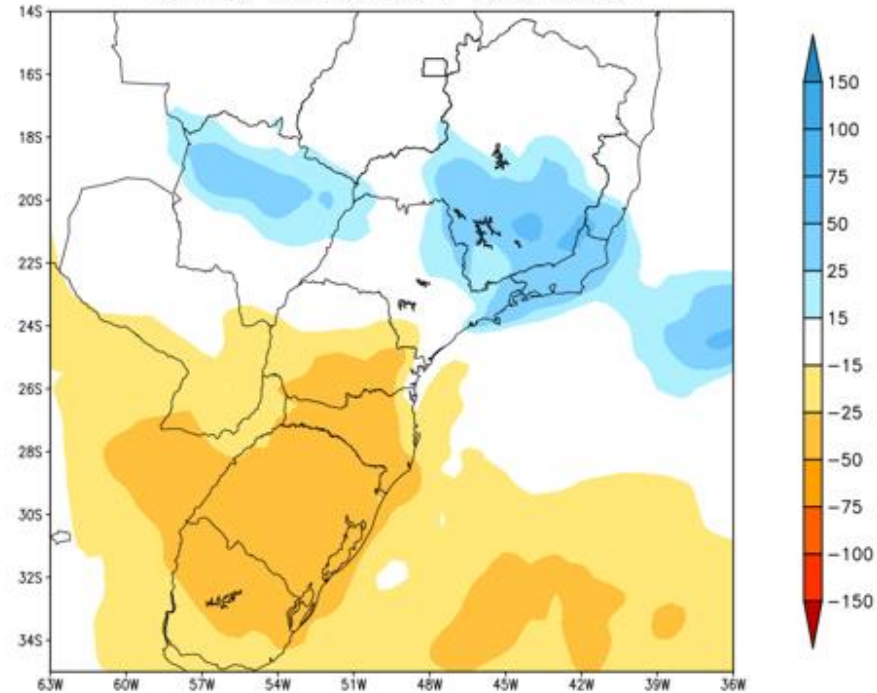


Previsão de chuva para os próximos 7 dias

GEFS / BRASIL_SUL
Precipitacao acumulada 1aSem (mm)
Previsao das 00Z dia 28/09/2022



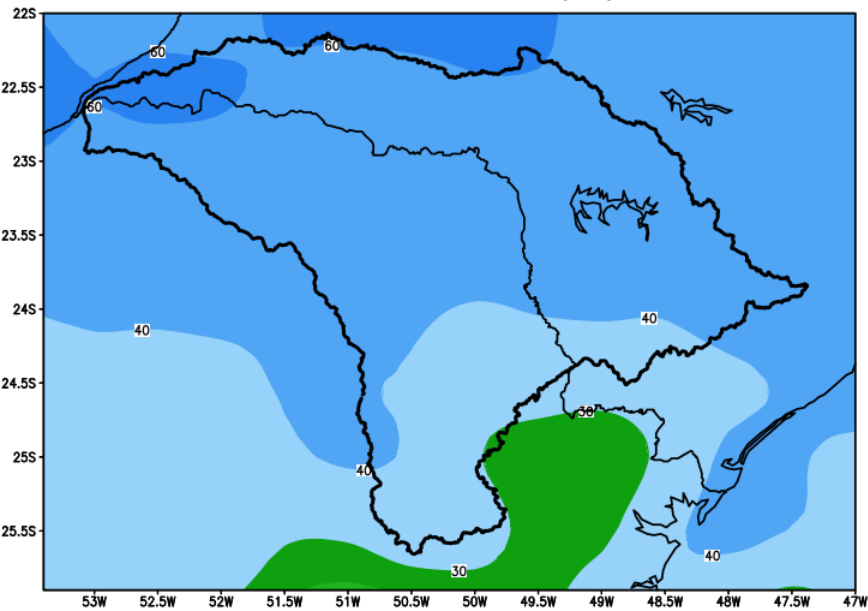
Anomalia de Precipitacao BR_SUL (mm)
Periodo: 2022092800 a 2022100500



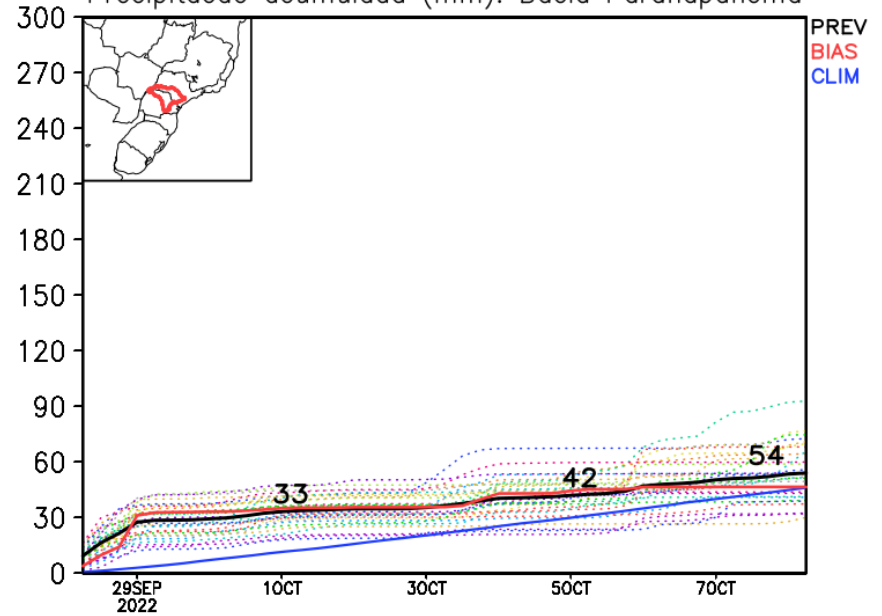
Fonte: GFS/NOAA

Bacia do rio Paranapanema

GEFS_BC / Bacia do Rio Paranapanema
Prec. acumulada com correcao de vies em 7 dias (mm)
Previsao das 00Z dia 28/09/2022

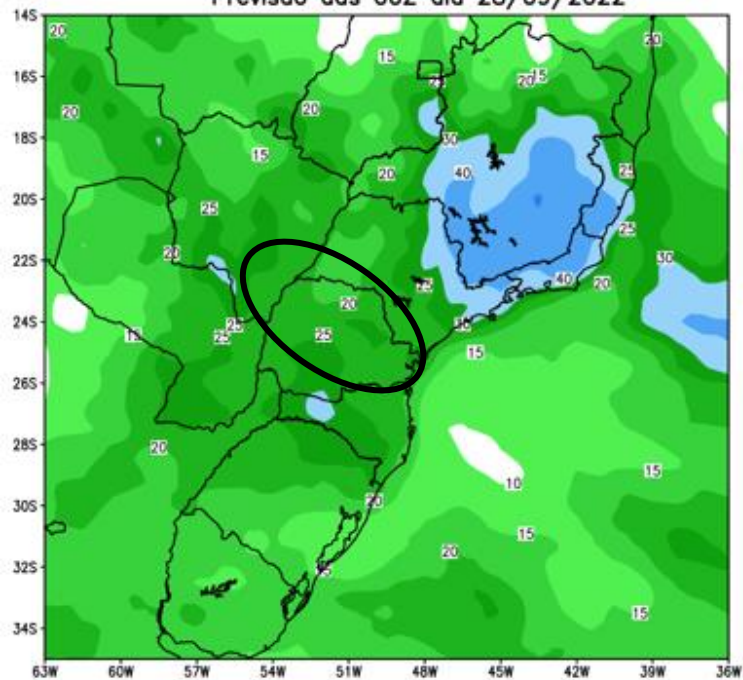


Precipitacao acumulada (mm): Bacia Paranapanema

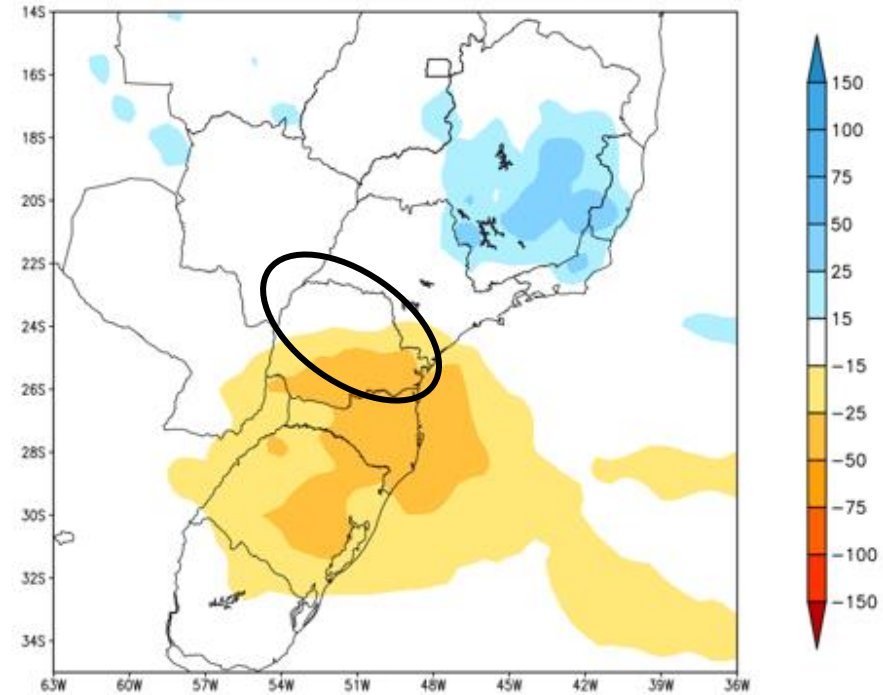


Tendência para a 2ª Semana

GEFS / BRASIL_SUL
Precipitacao acumulada 2aSem (mm)
Previsao das 00Z dia 28/09/2022

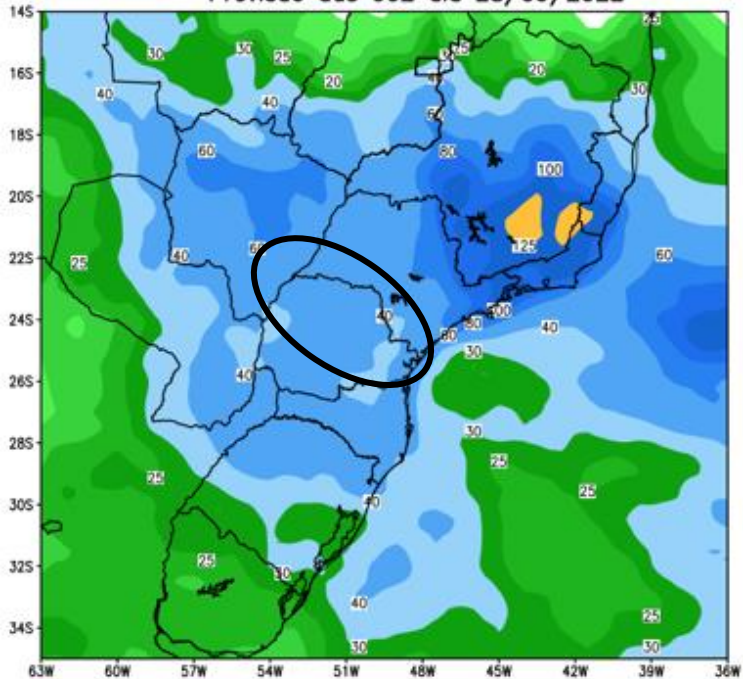


Anomalia de Precipitacao BR_SUL (mm)
Periodo: 2022100600 a 2022101200

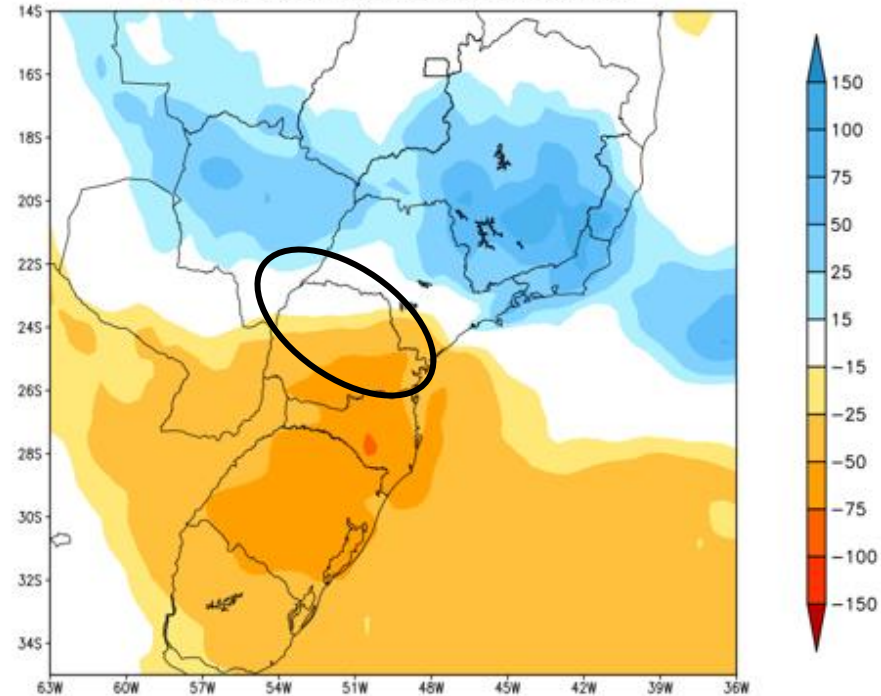


Tendência para as próximas duas semanas

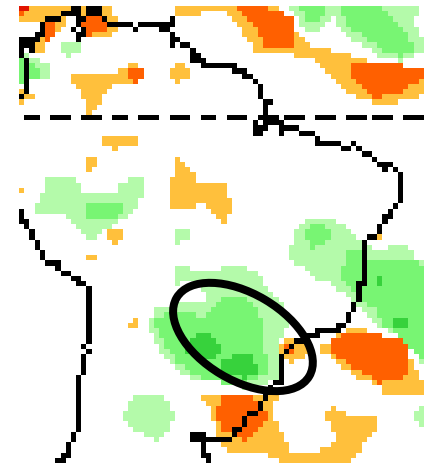
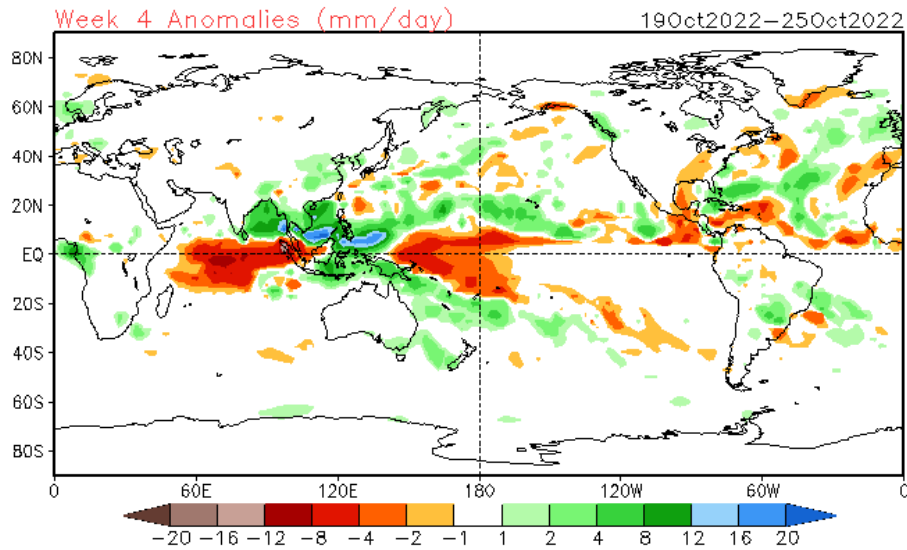
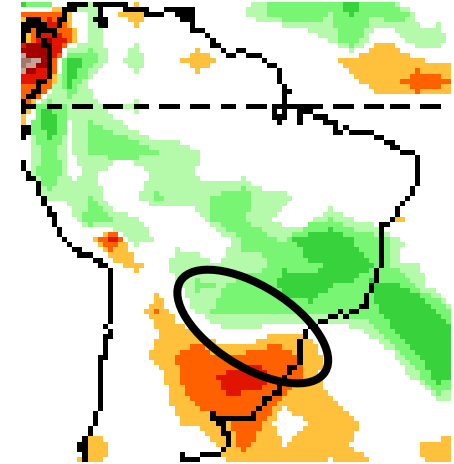
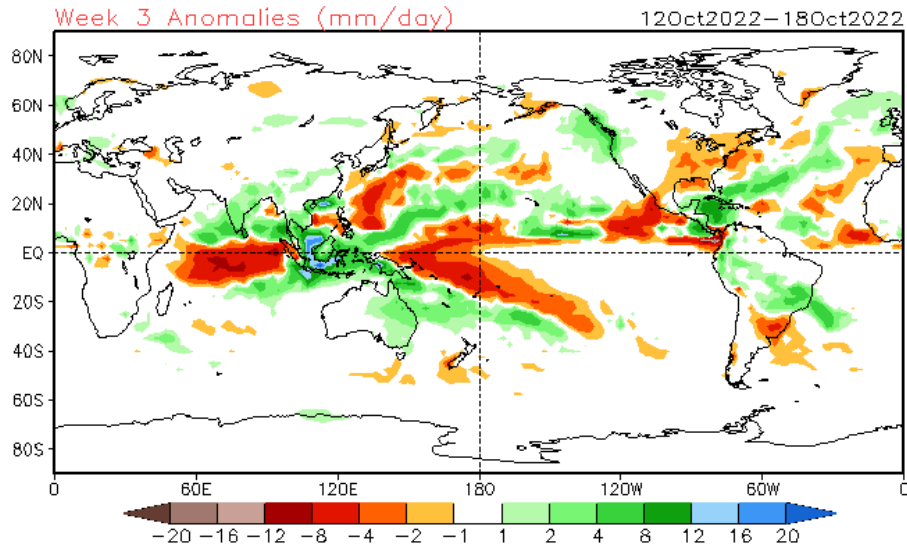
GEFS / BRASIL_SUL
Precipitacao acumulada 14dias (mm)
Previsao das 00Z dia 28/09/2022



Anomalia de Precipitacao BR_SUL (mm)
Periodo: 2022092800 a 2022101200

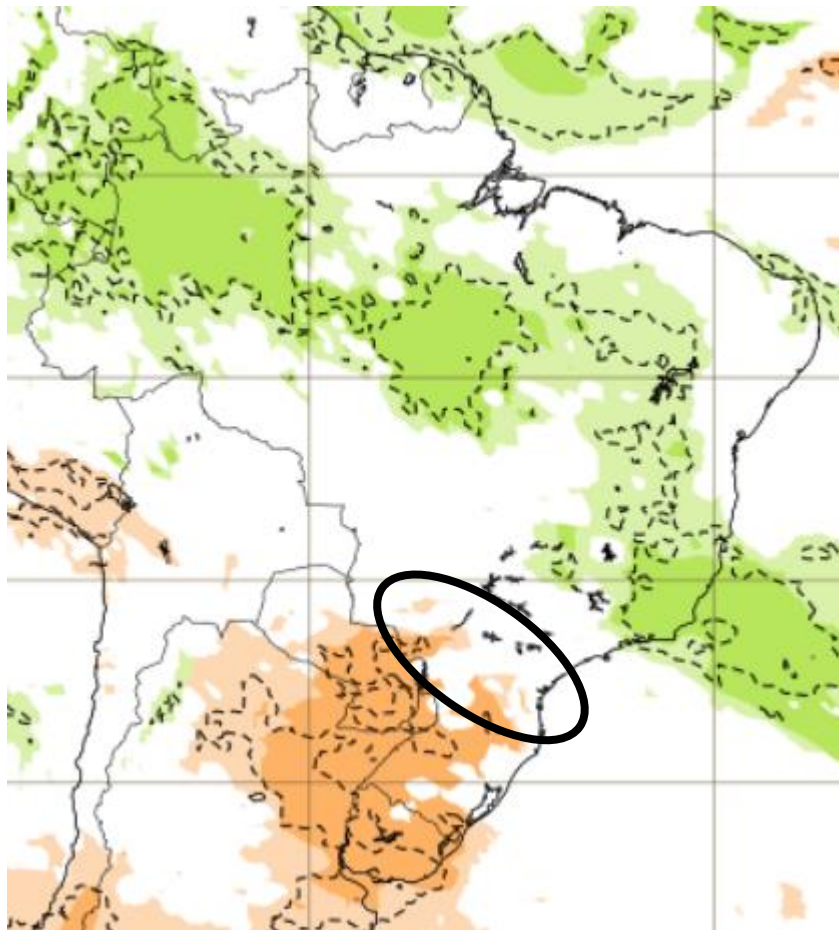


Tendência 3a e 4a semanas

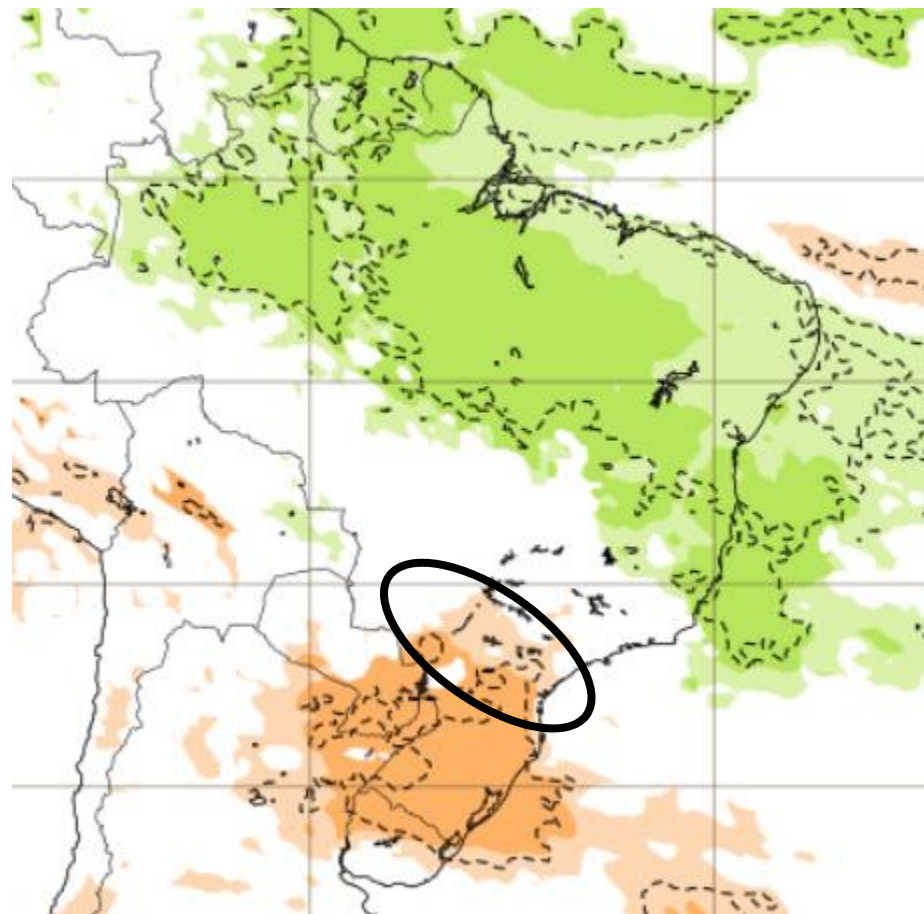


Tendência para 3ª e 4ª semanas

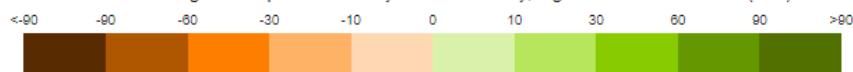
10-16/10



17-23/10



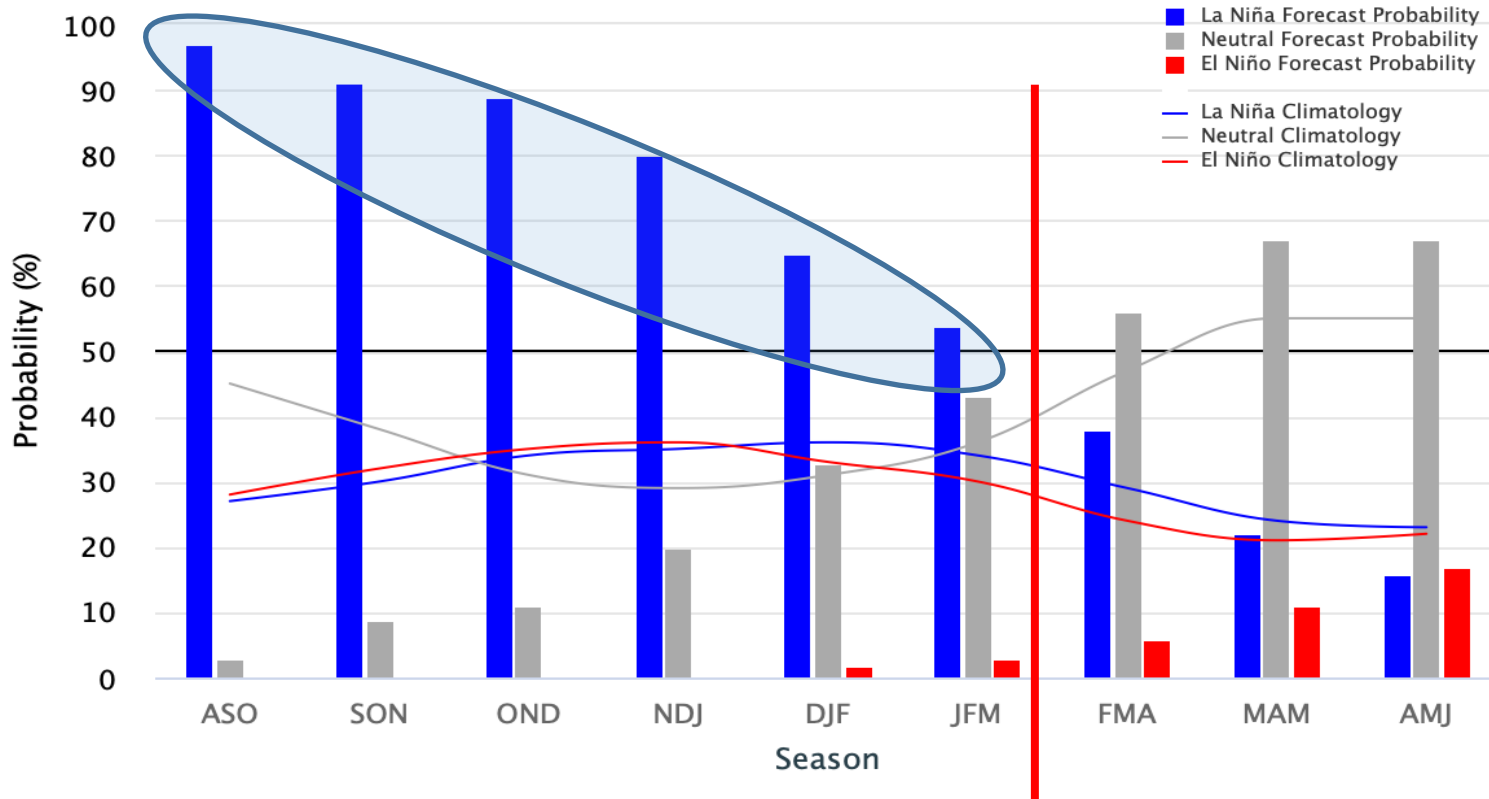
Extended range: Precipitation weekly mean anomaly, significance level: 10 % (mm)



Previsão do “La Niña”

Early–September 2022 CPC Official Probabilistic ENSO Forecasts

ENSO state based on NINO3.4 SST Anomaly
Neutral ENSO: $-0.5\text{ }^{\circ}\text{C}$ to $0.5\text{ }^{\circ}\text{C}$



Status Atual: **La Niña**

Previsão sazonal de Chuva OND

