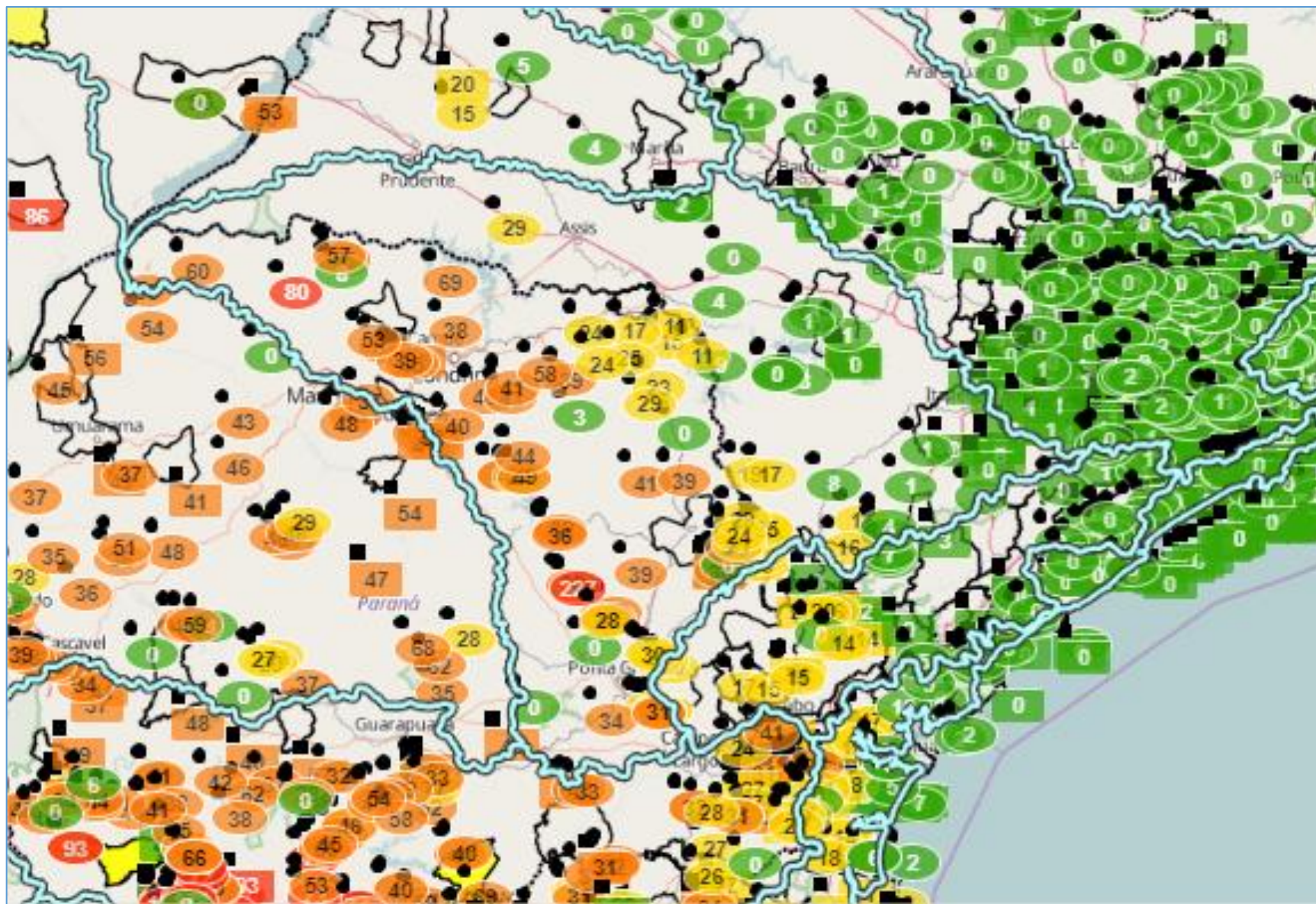


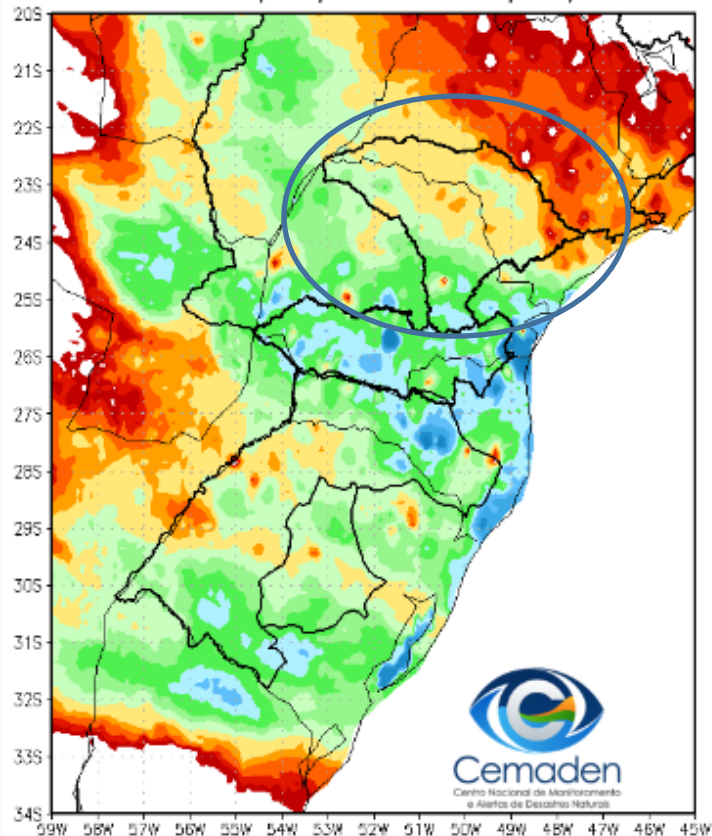
Monitoramento e Previsões de chuva para a Bacia do Rio Paranapanema

Precipitação acumulada: Últimas 24 horas

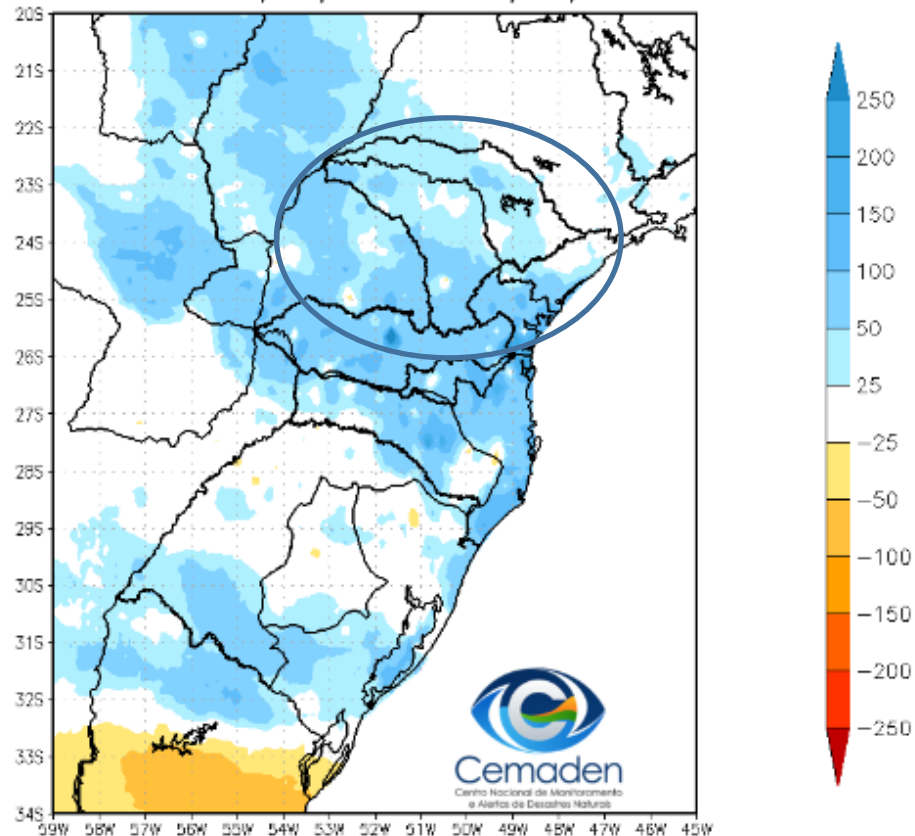


Precipitação acumulada: últimos 15 dias

Precipitação Acumulada (mm) A.S.
Período: 02/08/2022 a 17/08/2022

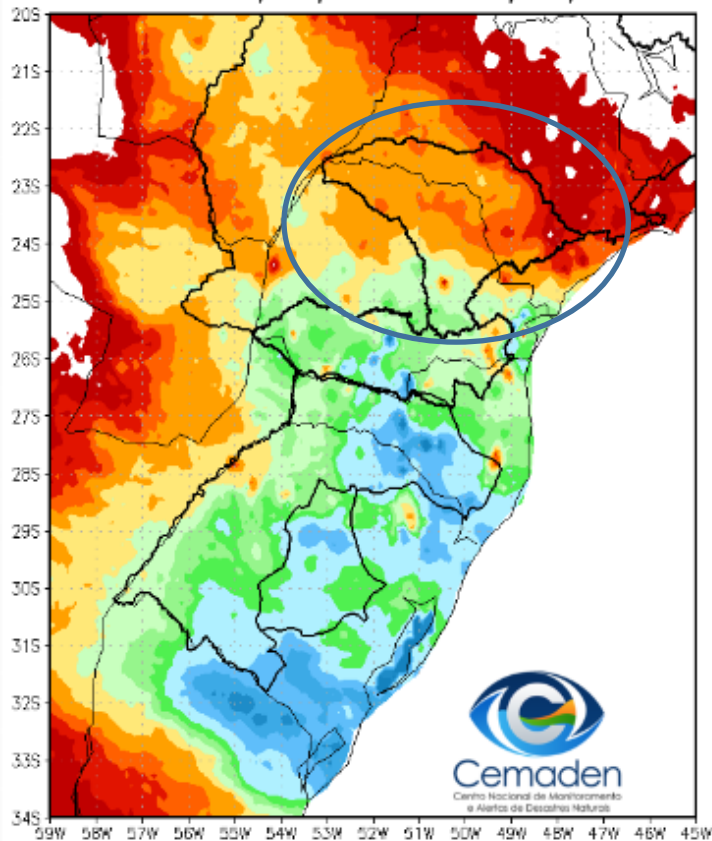


Anomalia de Precipitação (mm) A.S.
Período: 02/08/2022 a 17/08/2022

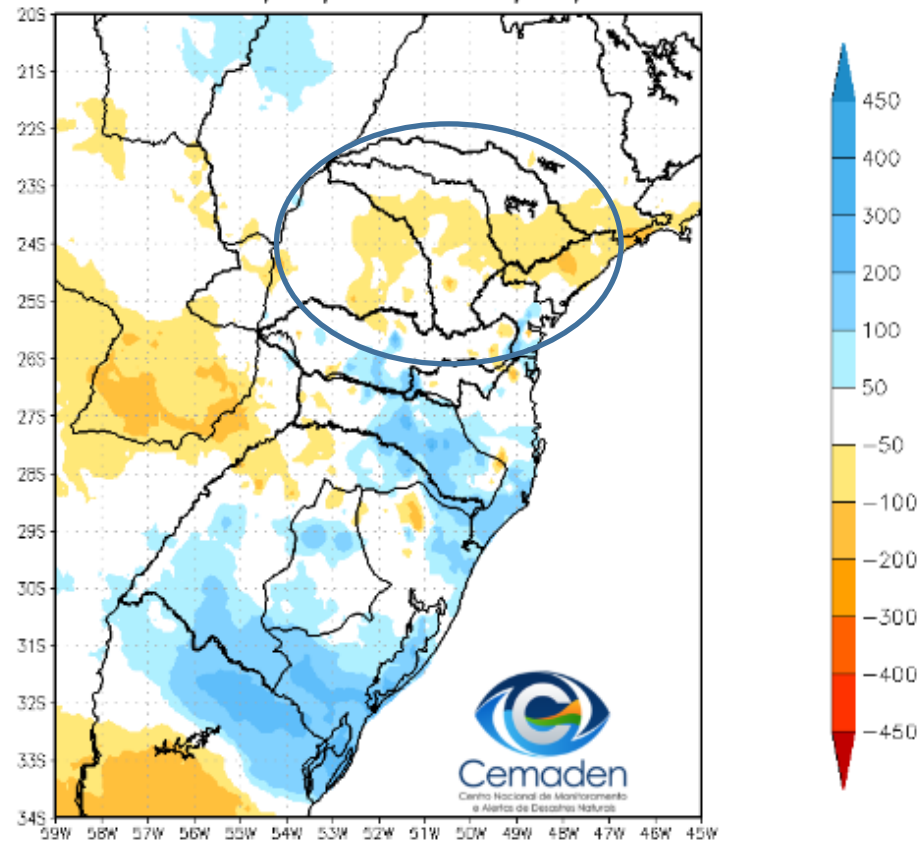


Precipitação acumulada: últimos 60 dias

Precipitação Acumulada (mm) A.S.
Período: 18/06/2022 a 17/08/2022



Anomalia de Precipitação (mm) A.S.
Período: 18/06/2022 a 17/08/2022

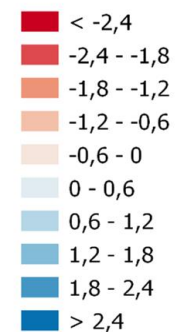
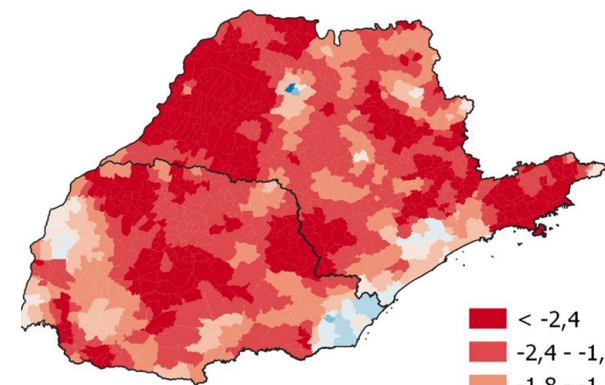
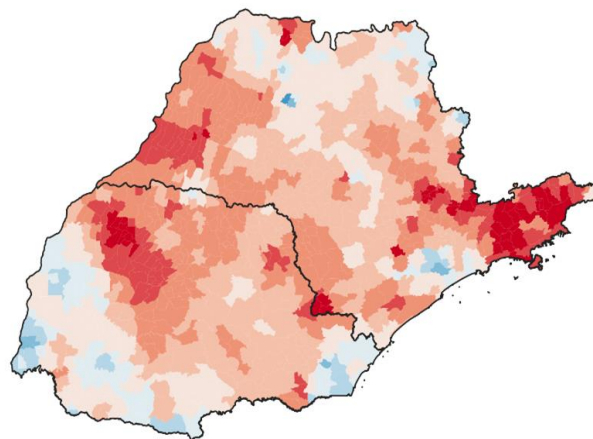
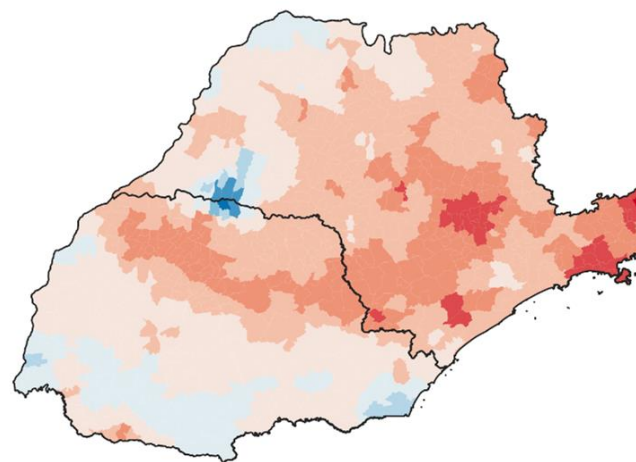


SPI: Agosto de 2022

SPI03

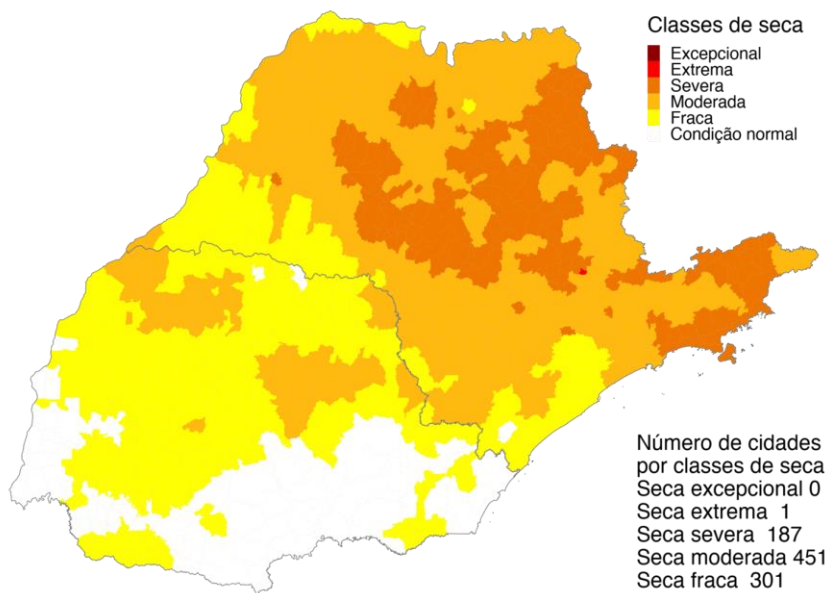
SPI12

SPI24



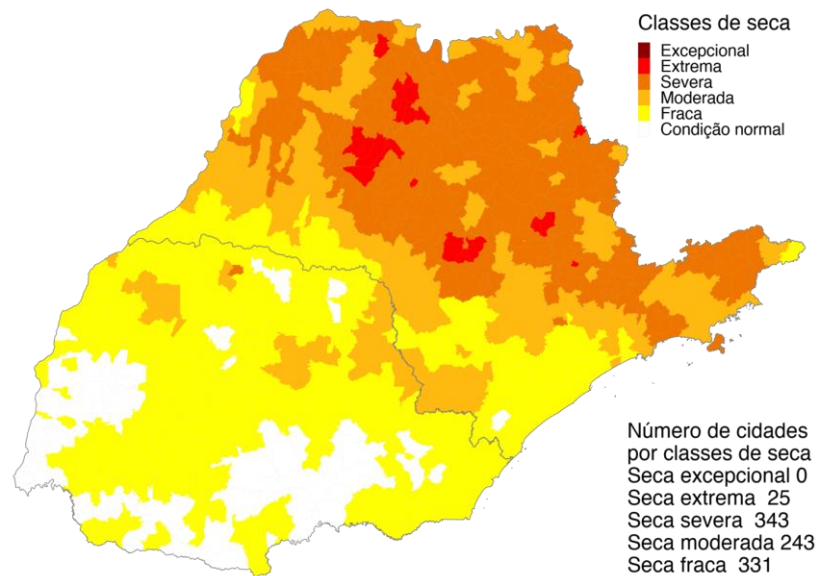
Índice Integrado de Seca – IIS nas escalas de 3 e 6 meses

IIS3



Julho 2022
 Índice Integrado de Seca (SPI3, VHI, US)
 Dados: CPTEC/INPE - NOAA - NASA / Preparação: Cemaden/MCTI

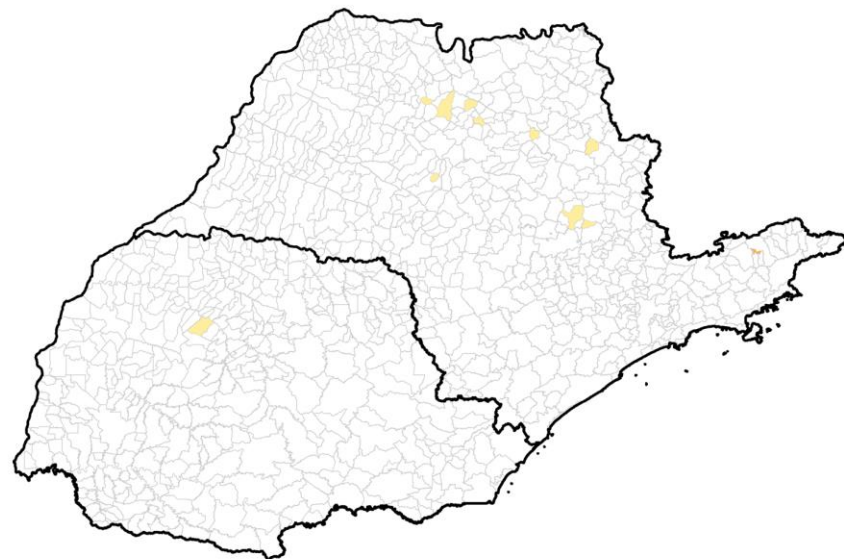
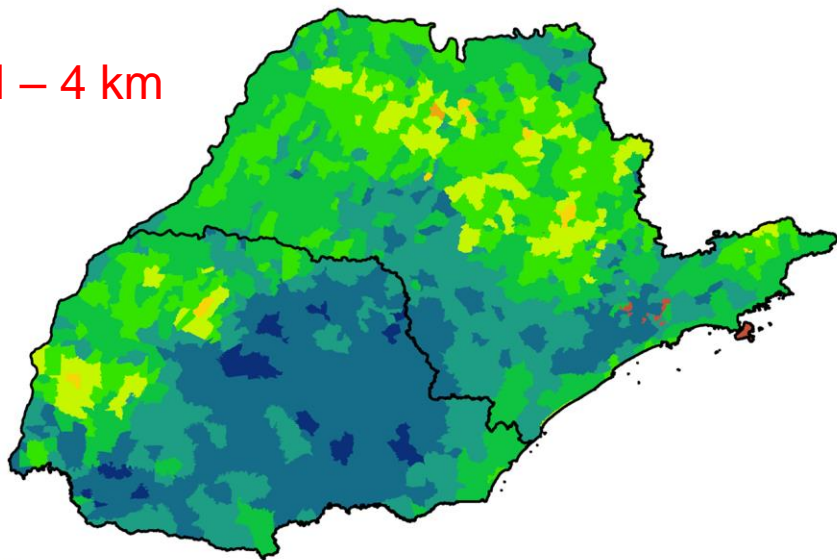
IIS6



Julho 2022
 Índice Integrado de Seca (SPI6, VHI, US)
 Dados: CPTEC/INPE - NOAA - NASA / Preparação: Cemaden/MCTI

Áreas Agroprodutivas afetadas pela seca: Bacia do rio Paranapanema:

VHI - 4 km



- < 10
- 10 - 20
- 20 - 30
- 30 - 40
- 40 - 50
- 50 - 60
- 60 - 70
- 70 - 80
- 80 - 90
- 90 - 100

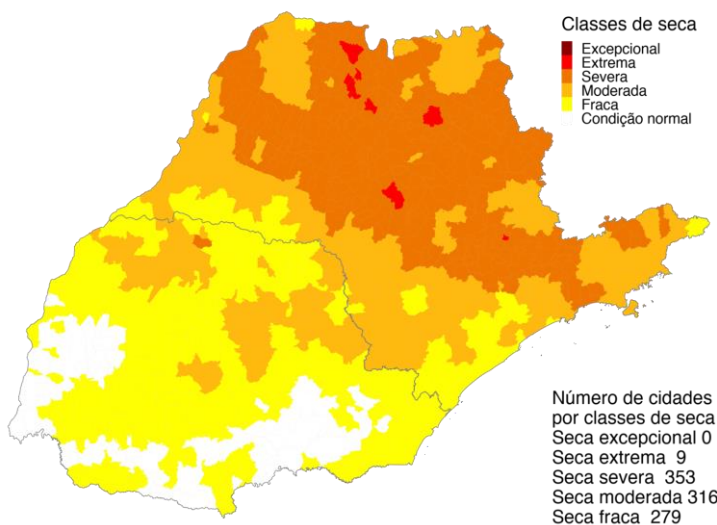
UF	40 a 60%		60 - 80%		> 80%	
	22/jul	12/ago	22/jul	12/ago	22/jul	12/ago
Paraná	15	1	-	-	-	-
São Paulo	53	11	11	1	1	-

*Estimativa a partir dos dados do Cadastro Ambiental Rural para minifúndios, pequenas e médias propriedades e VHI (Satélite)

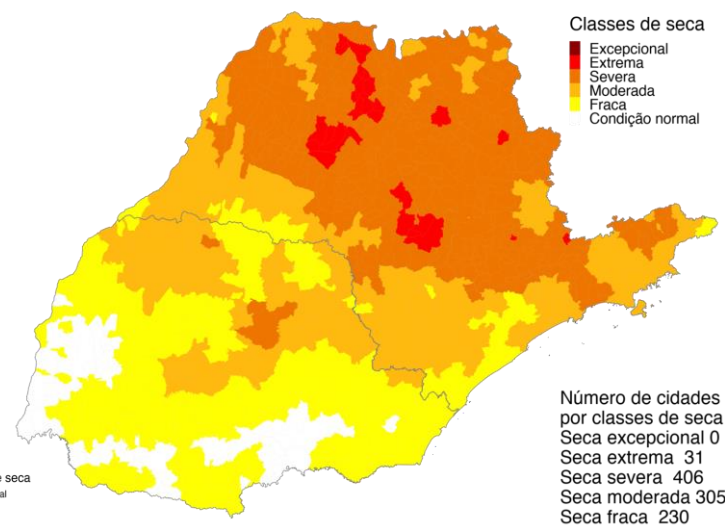
Cenários IIS: Bacia do rio Paranapanema:

Chuva 30% ACIMA da média **Setembro/22**

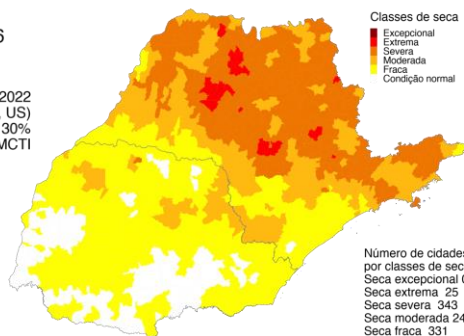
Chuva 30% ABAIXO da média



Julho 2022
Índice Integrado de Seca (SPI6, VHI, US)
Cenário: Chuva + 30%
Dados: CPTEC/INPE - NOAA - NASA / Preparação: Cemaden/MCTI



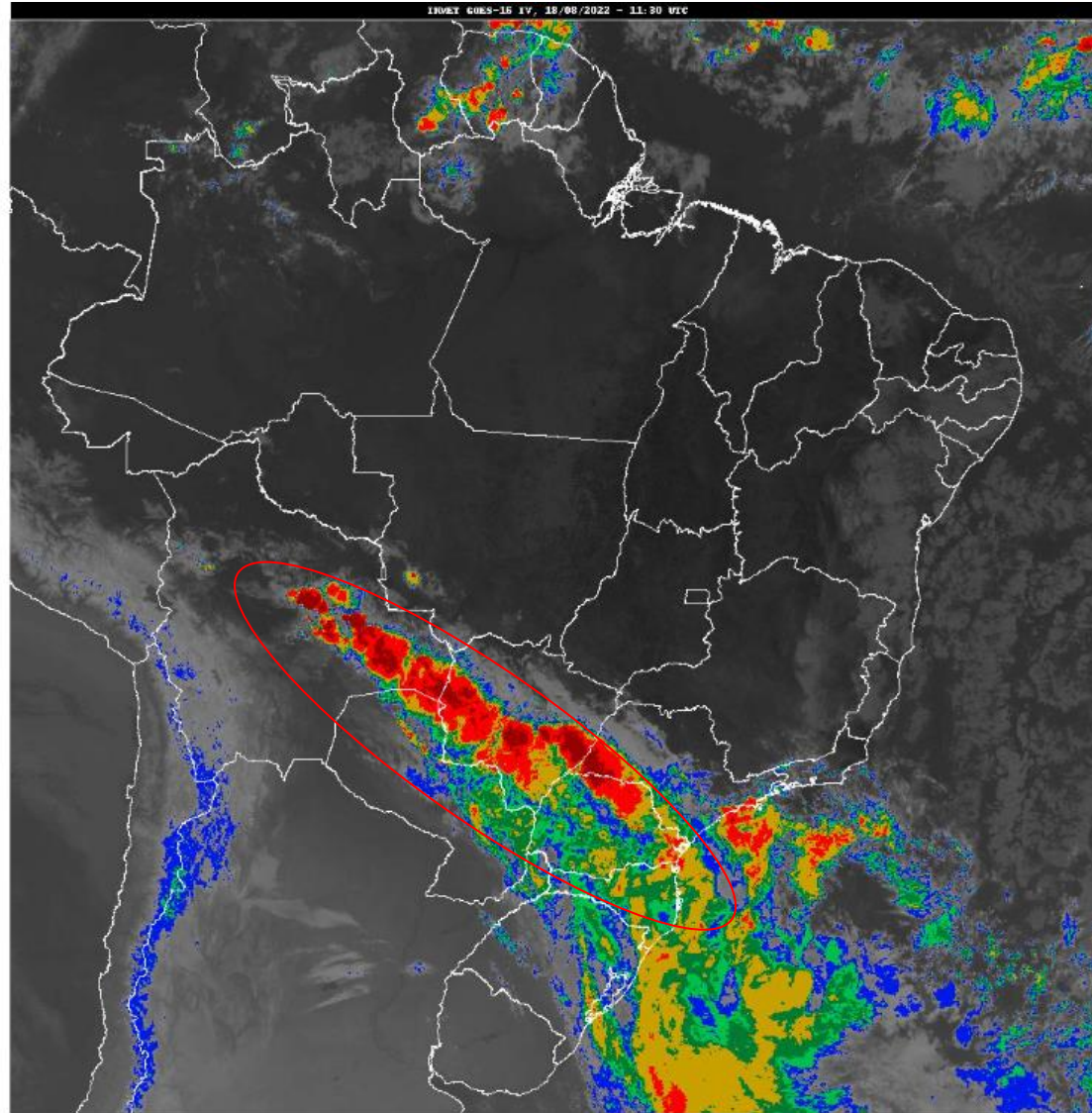
Julho 2022
Índice Integrado de Seca (SPI6, VHI, AUS)
Cenário: Chuva - 30%
Dados: CPTEC/INPE - NOAA - NASA / Preparação: Cemaden/MCTI



Julho 2022
Índice Integrado de Seca (SPI6, VHI, US)
Dados: CPTEC/INPE - NOAA - NASA / Preparação: Cemaden/MCTI

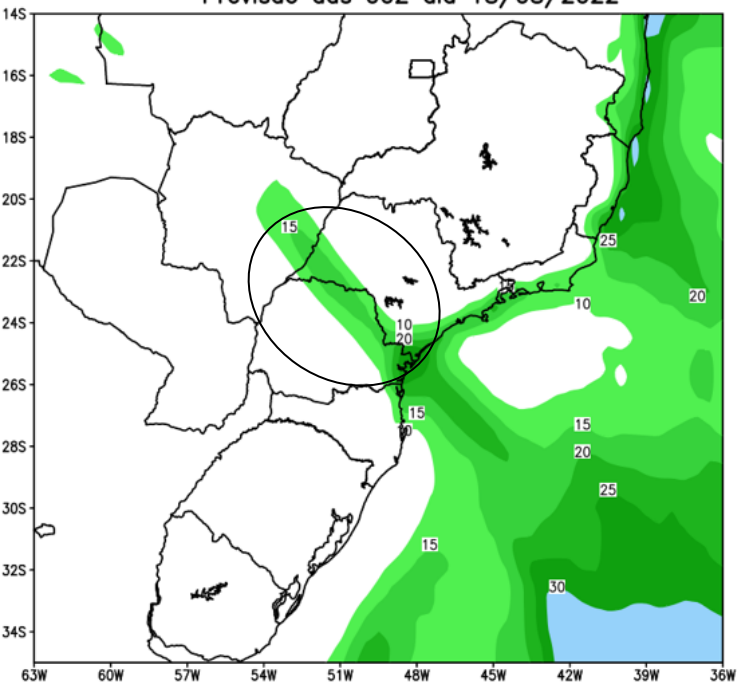
IIS6 observado (até 16 de agosto)

Situação Meteorológica Atual

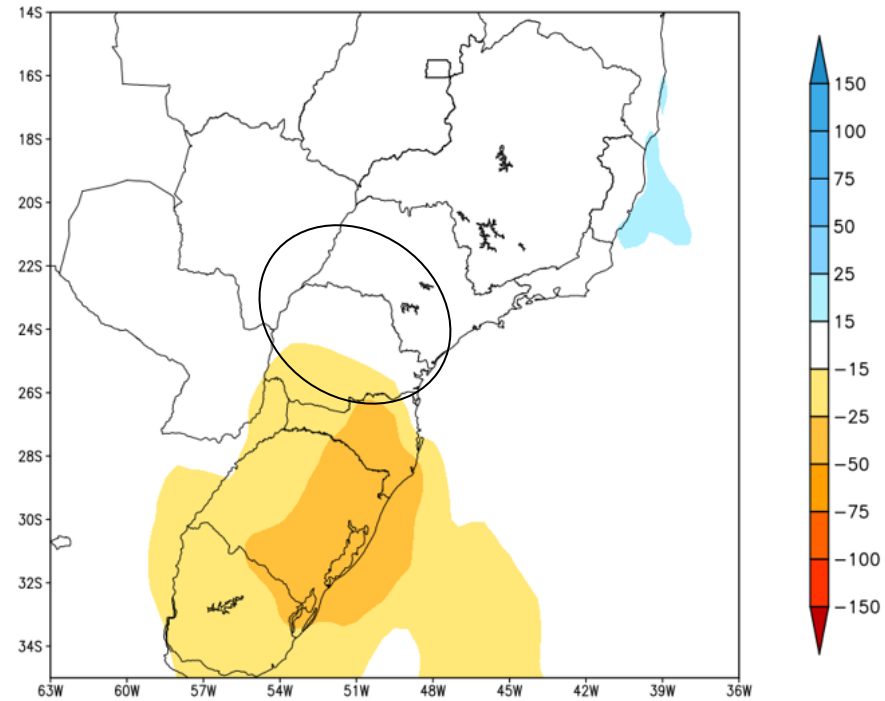


Previsão de chuva para os próximos 7 dias

GEFS / BRASIL_SUL
Precipitacao acumulada 1aSem (mm)
Previsao das 00Z dia 18/08/2022



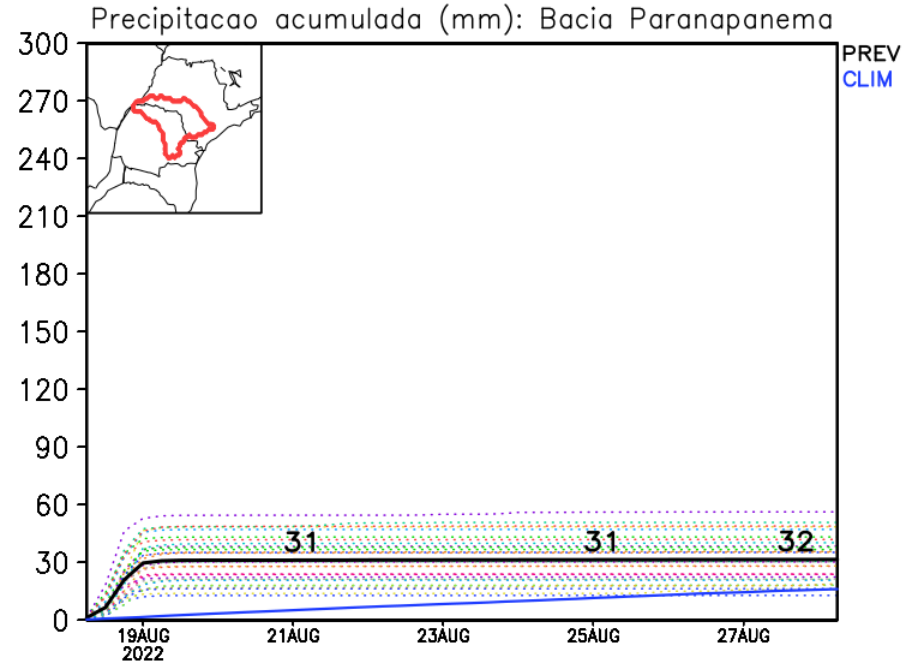
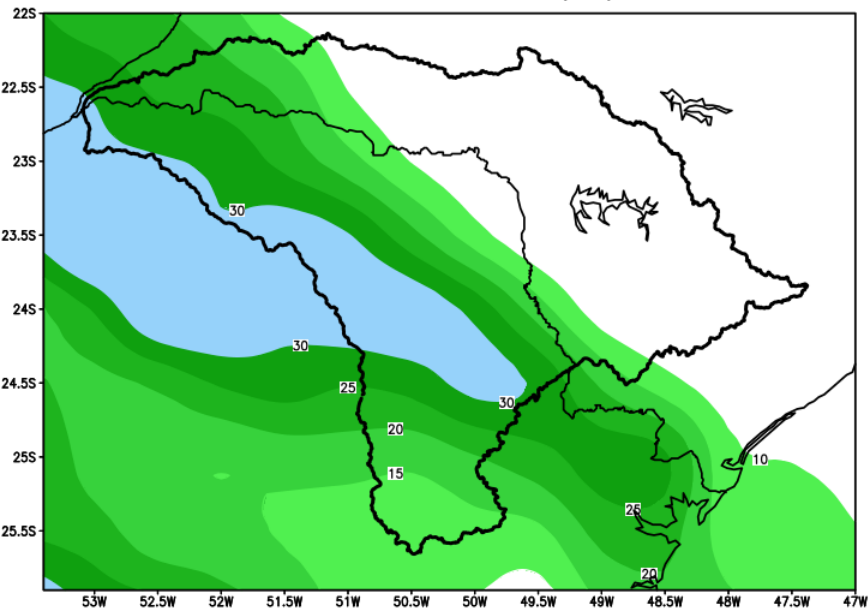
Anomalia de Precipitacao BR_SUL (mm)
Periodo: 2022081800 a 2022082500



Fonte: GFS/NOAA

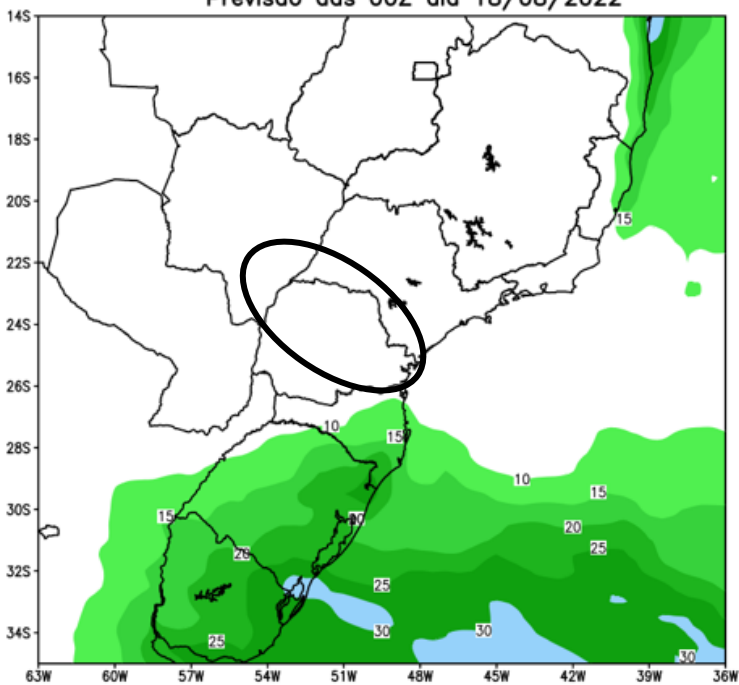
Bacia do rio Paranapanema

GEFS_BC / Bacia do Rio Paranapanema
Prec. acumulada com correcao de vies em 7 dias (mm)
Previsao das 00Z dia 18/08/2022

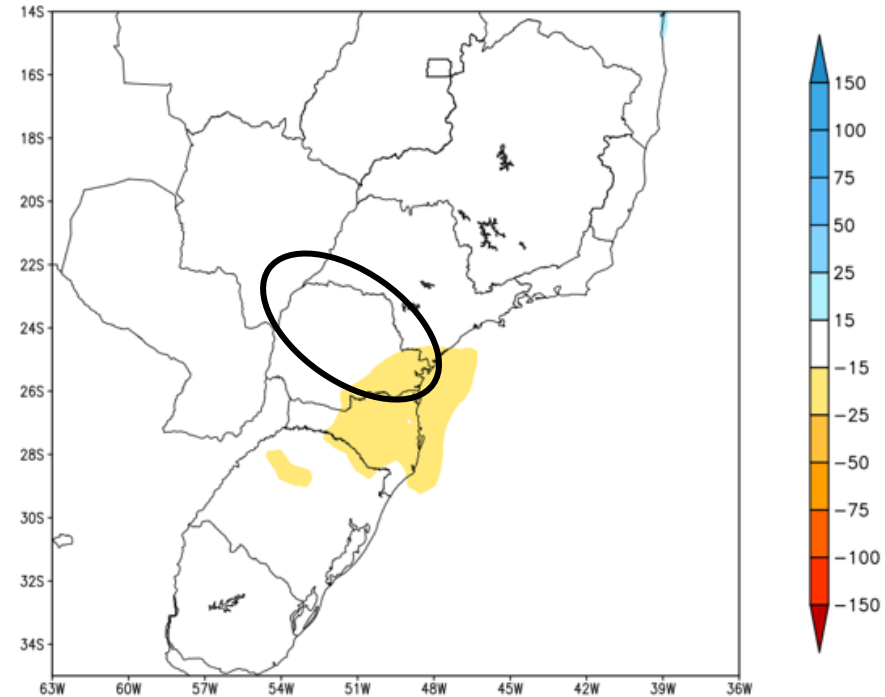


Tendência para a 2ª Semana

GEFS / BRASIL_SUL
Precipitacao acumulada 2aSem (mm)
Previsao das 00Z dia 18/08/2022

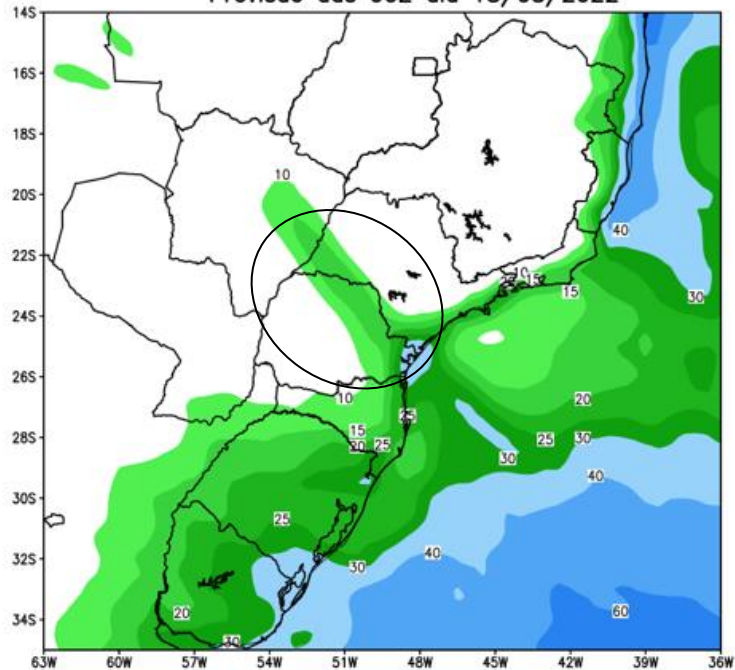


Anomalia de Precipitacao BR_SUL (mm)
Periodo: 2022082600 a 2022090100

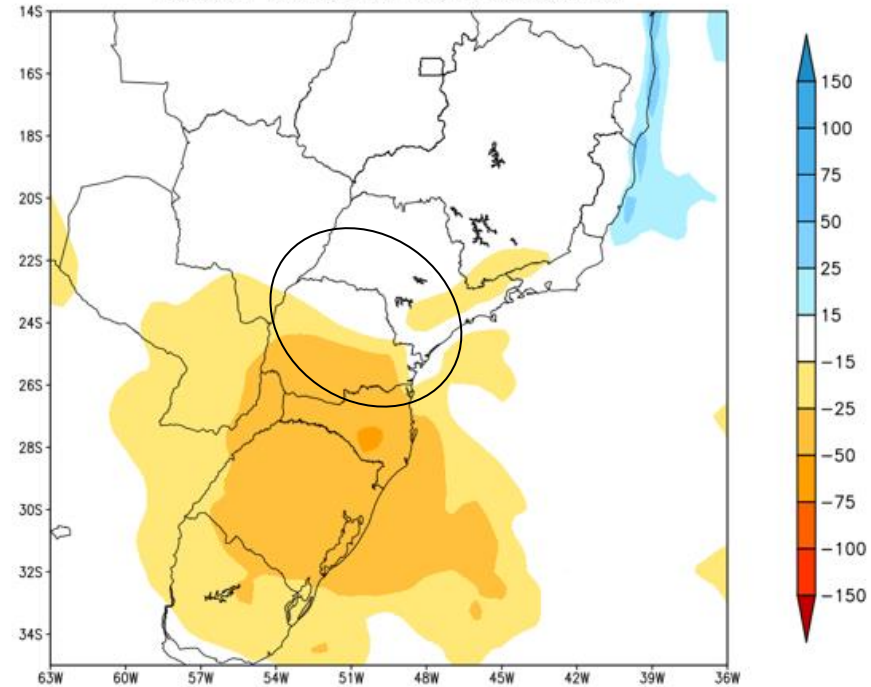


Tendência para as próximas duas semanas

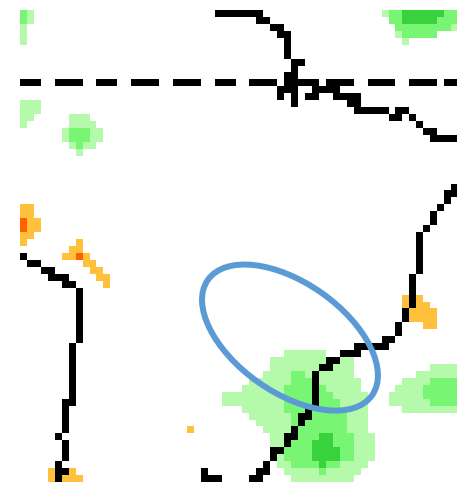
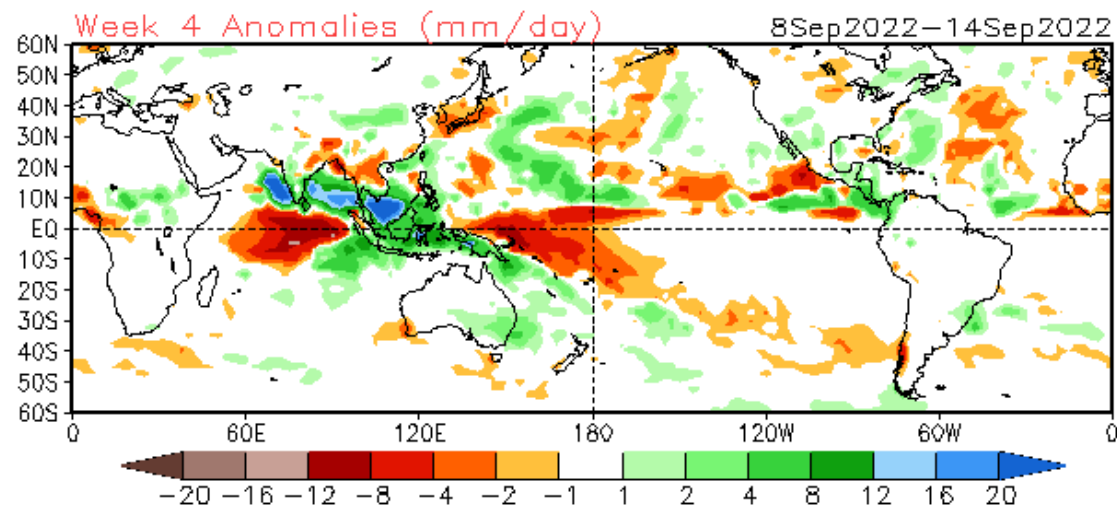
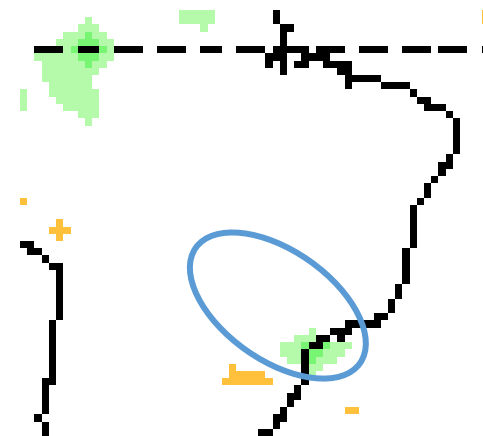
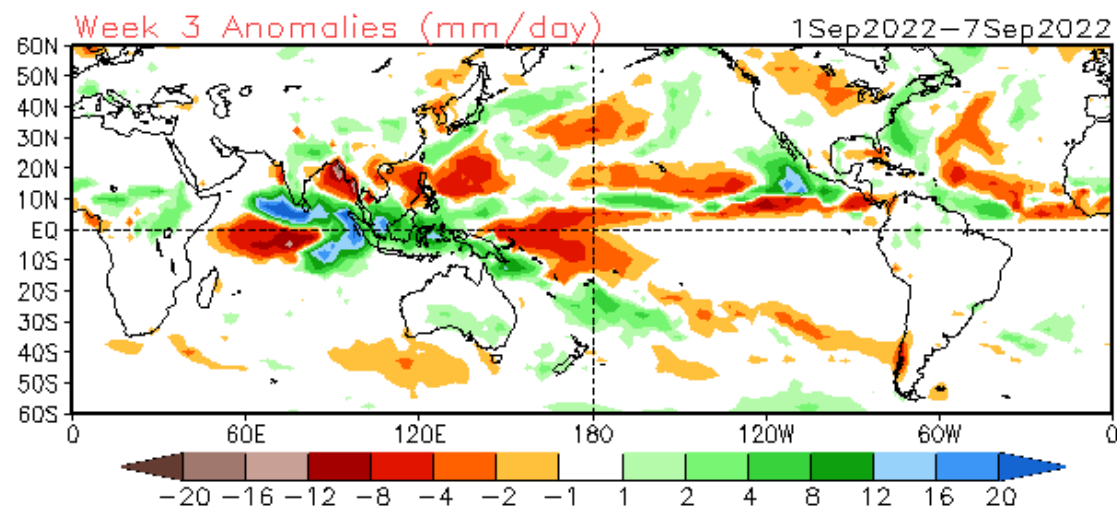
GEFS / BRASIL_SUL
Precipitacao acumulada 14dias (mm)
Previsao das 00Z dia 18/08/2022



Anomalia de Precipitacao BR_SUL (mm)
Periodo: 2022081800 a 2022090100

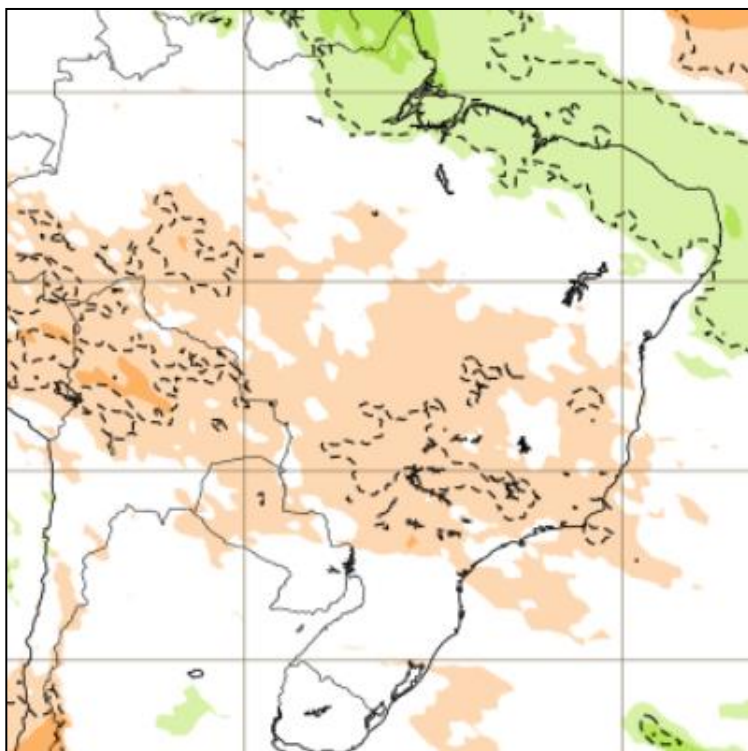


Tendência 3a e 4a semanas

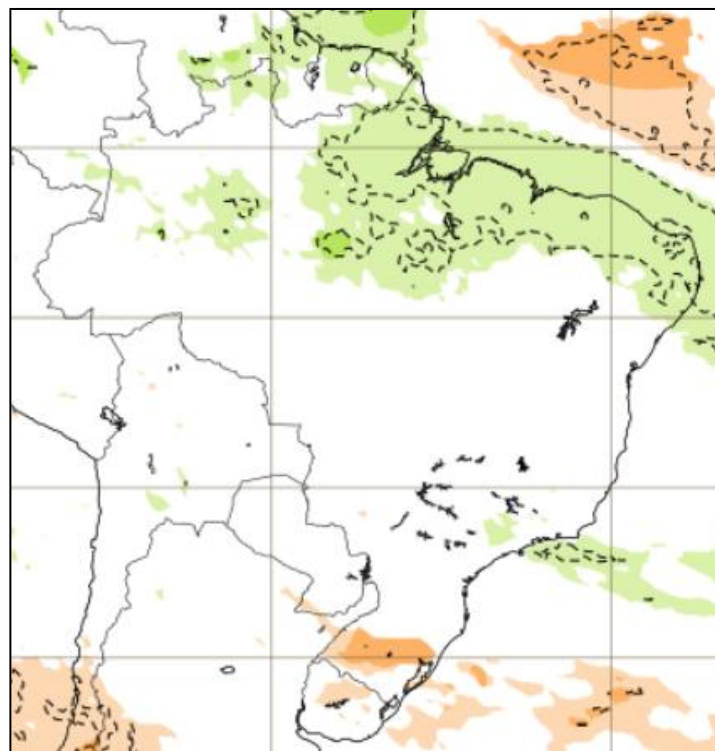


Tendência para 3ª e 4ª semanas

29/08-04/09

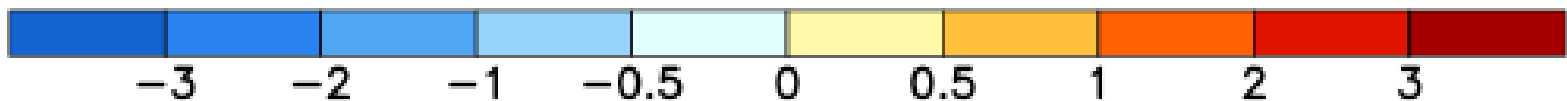
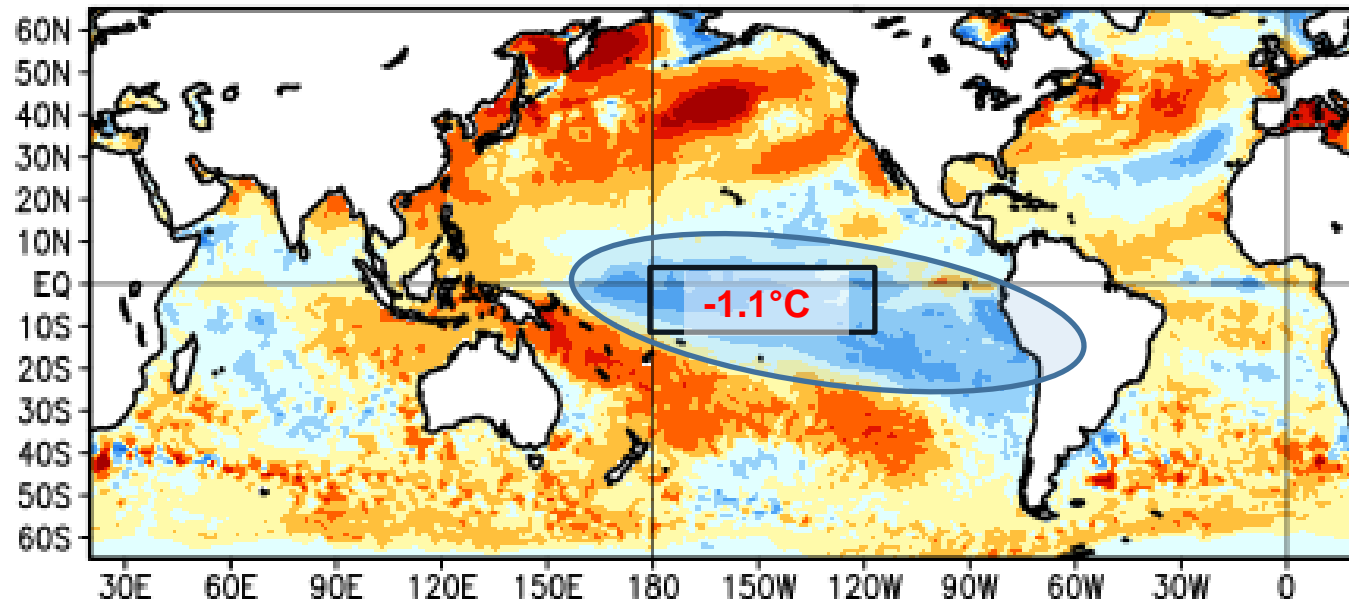


05-11/09



Status Atual: **La Niña**

Average SST Anomalies
17 JUL 2022 – 13 AUG 2022

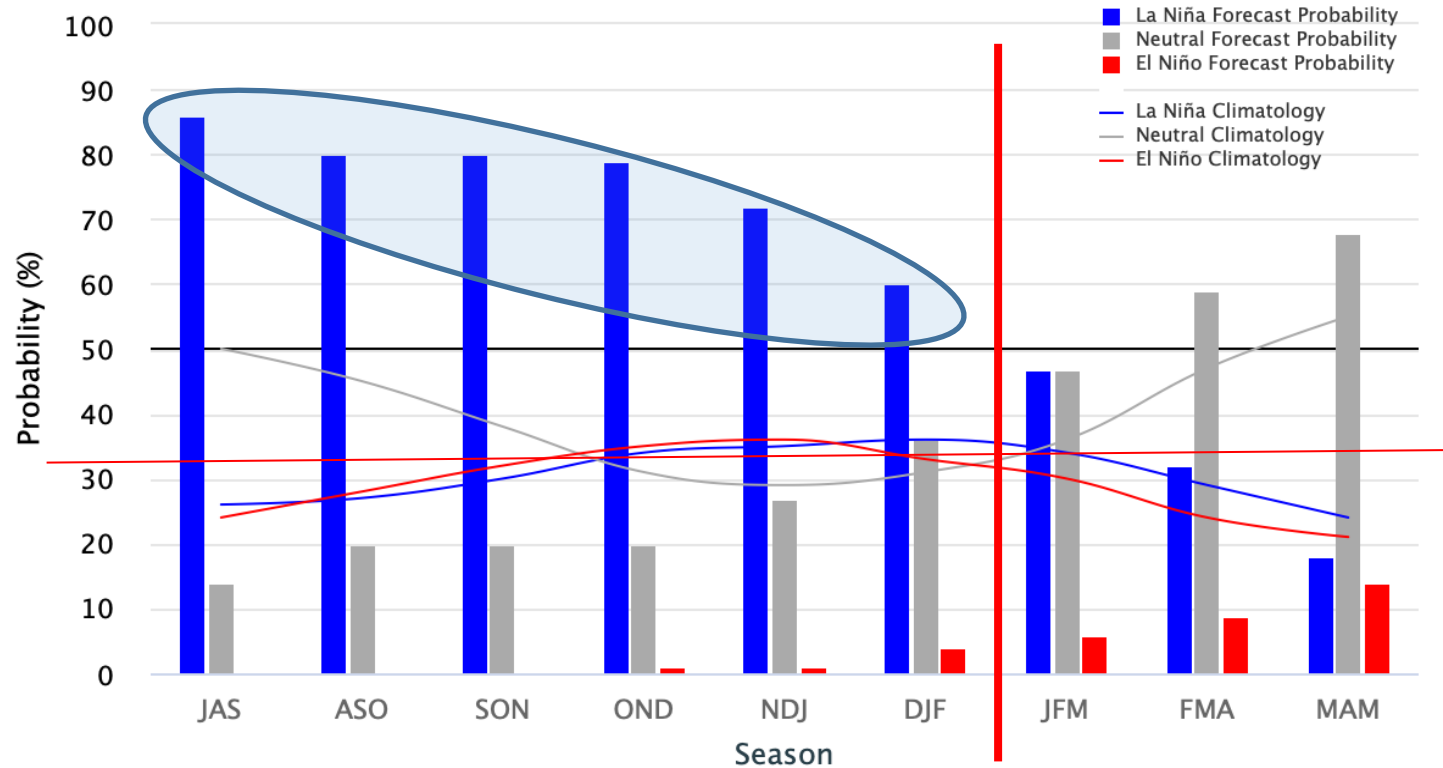


Previsão do “La Niña”

Early-August 2022 CPC Official Probabilistic ENSO Forecasts

ENSO state based on NINO3.4 SST Anomaly

Neutral ENSO: $-0.5\text{ }^{\circ}\text{C}$ to $0.5\text{ }^{\circ}\text{C}$



Status Atual: **La Niña**

Previsão sazonal de Chuva SON

