

# Monitoramento e Previsões de chuva para a Bacia do Rio Paranapanema

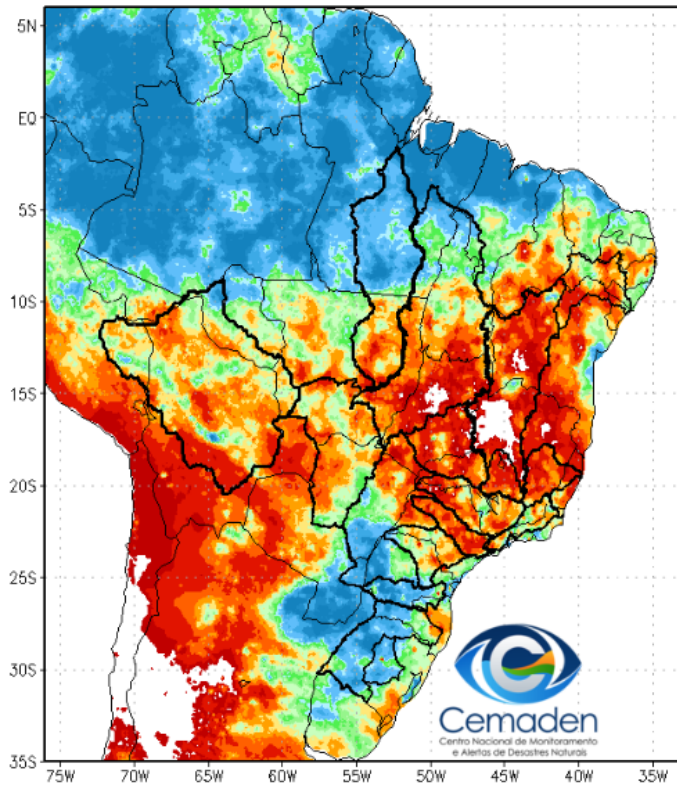


Cemaden  
Centro Nacional de Monitoramento  
e Alertas de Desastres Naturais

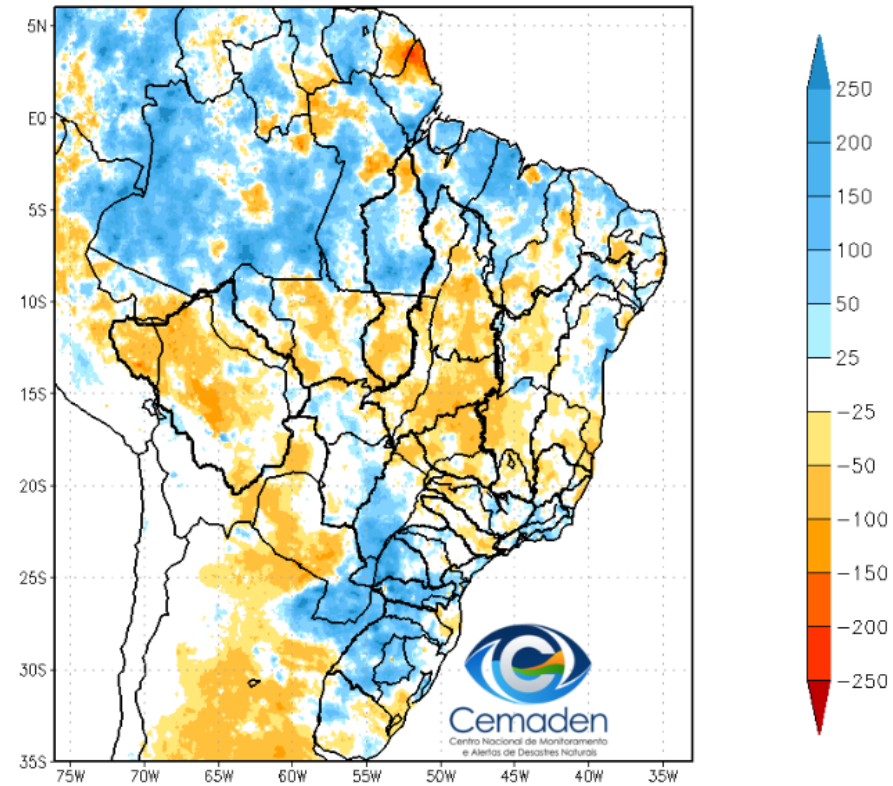
28 de Abril de 2022

# Precipitação acumulada em Abril

Precipitação Acumulada (mm) A.S.  
Período: 28/03/2022 a 27/04/2022

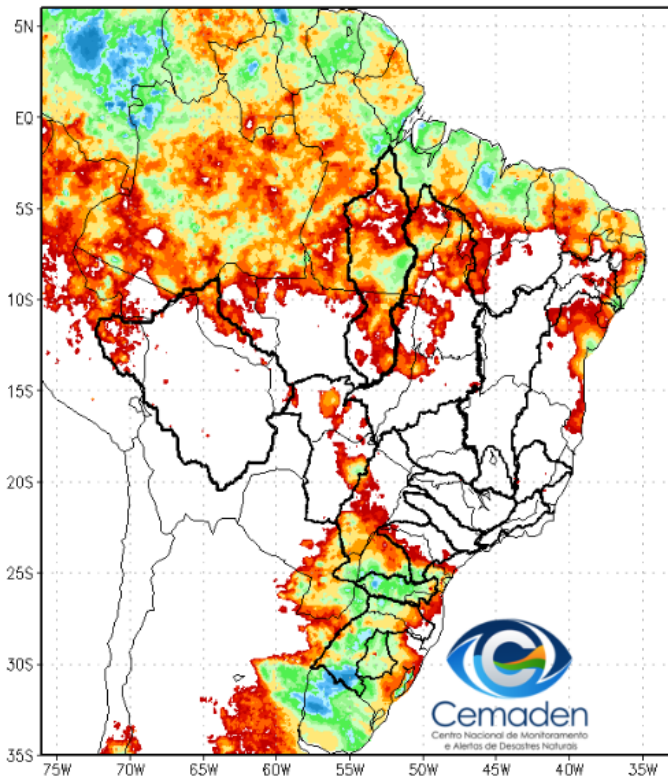


Anomalia de Precipitação (mm) A.S.  
Período: 28/03/2022 a 27/04/2022

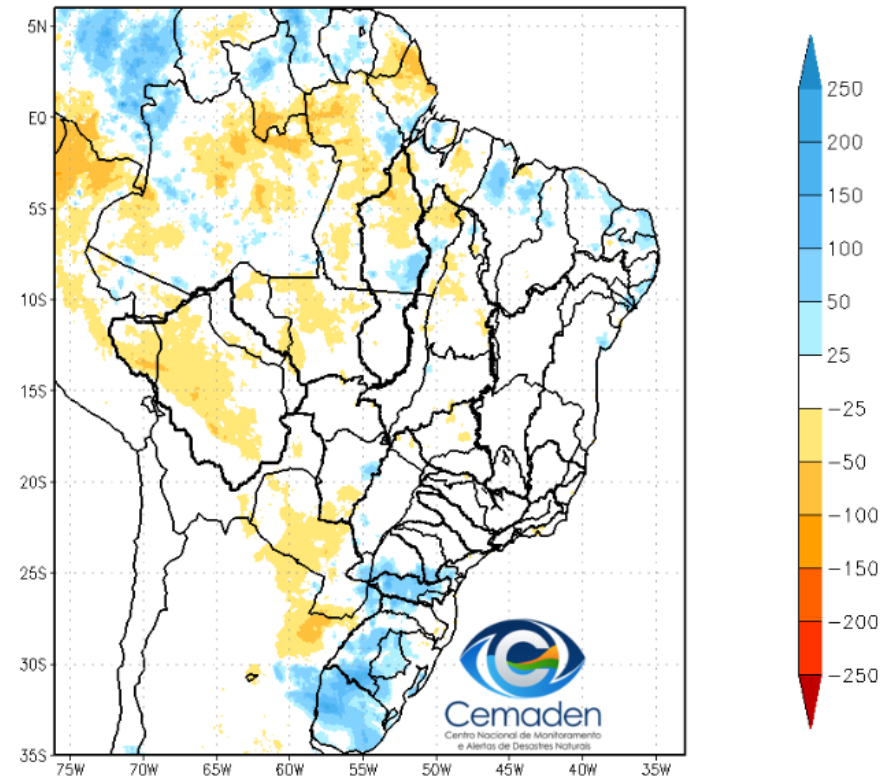


# Precipitação acumulada nos últimos 07 dias

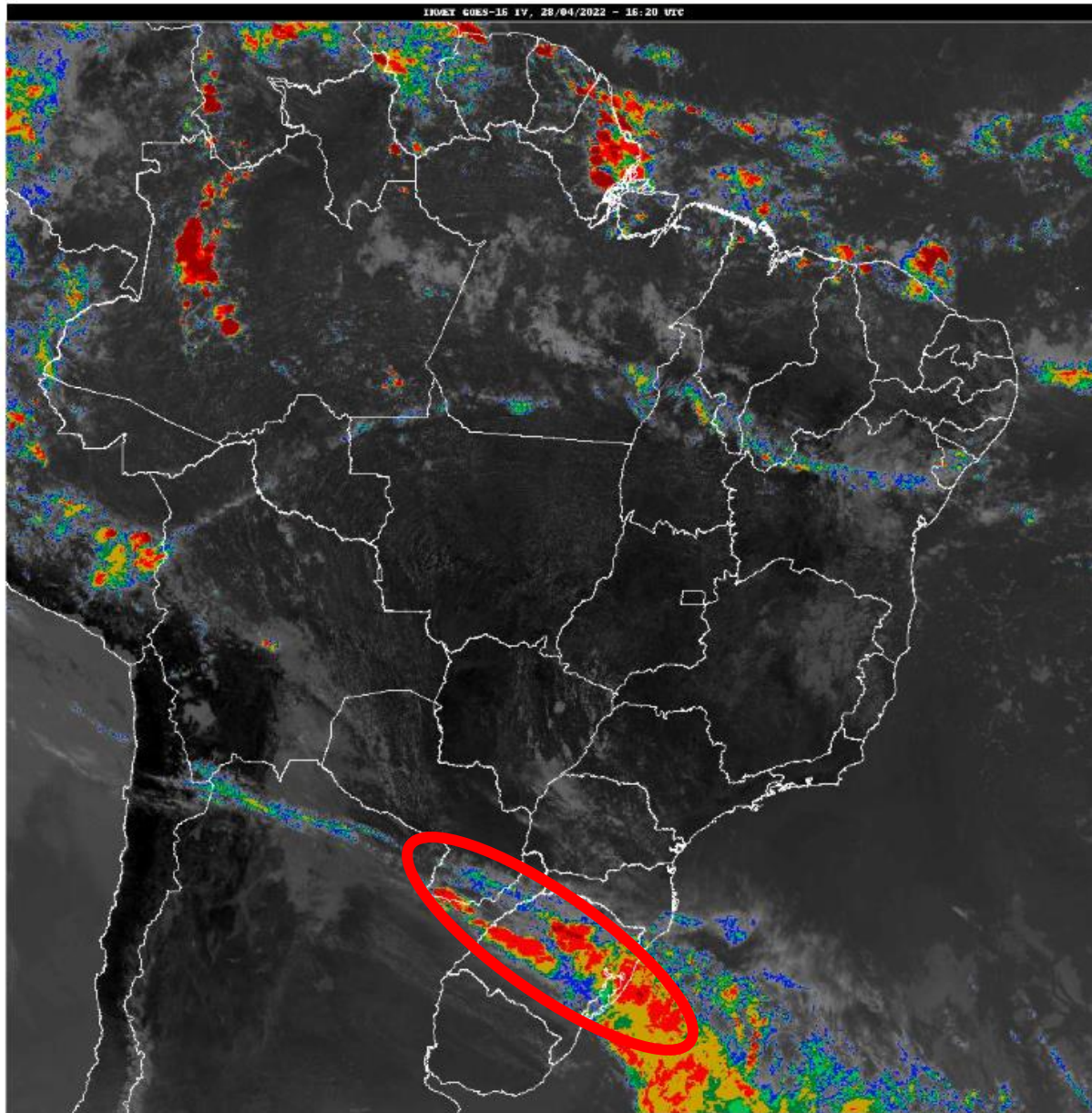
Precipitação Acumulada (mm) A.S.  
Período: 20/04/2022 a 27/04/2022



Anomalia de Precipitação (mm) A.S.  
Período: 20/04/2022 a 27/04/2022

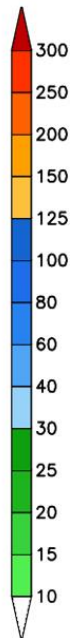
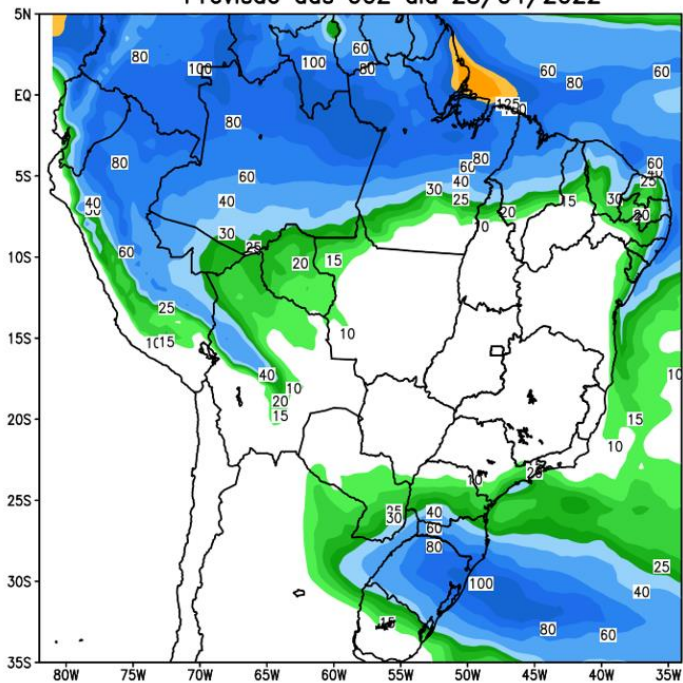


# Situação Meteorológica Atual

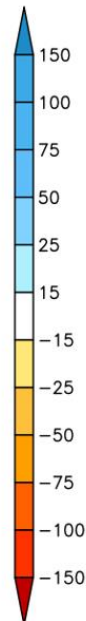
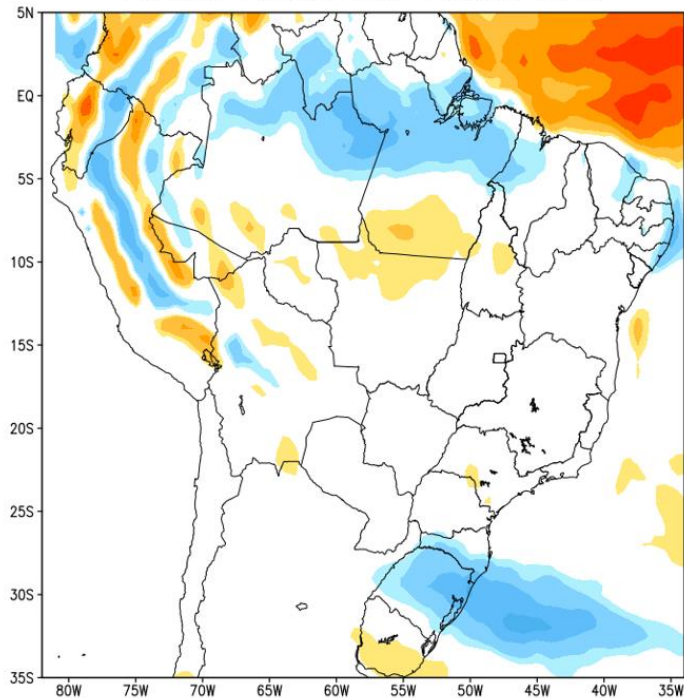


# Previsão de chuva para os próximos 7 dias

GEFS / BRASIL  
Precipitacao acumulada 1aSem (mm)  
Previsao das 00Z dia 28/04/2022



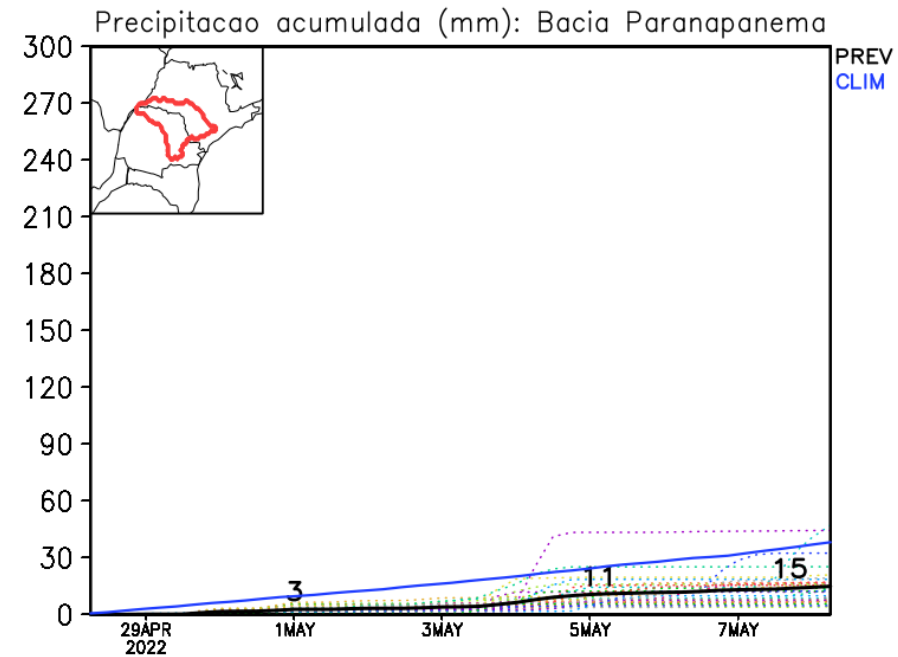
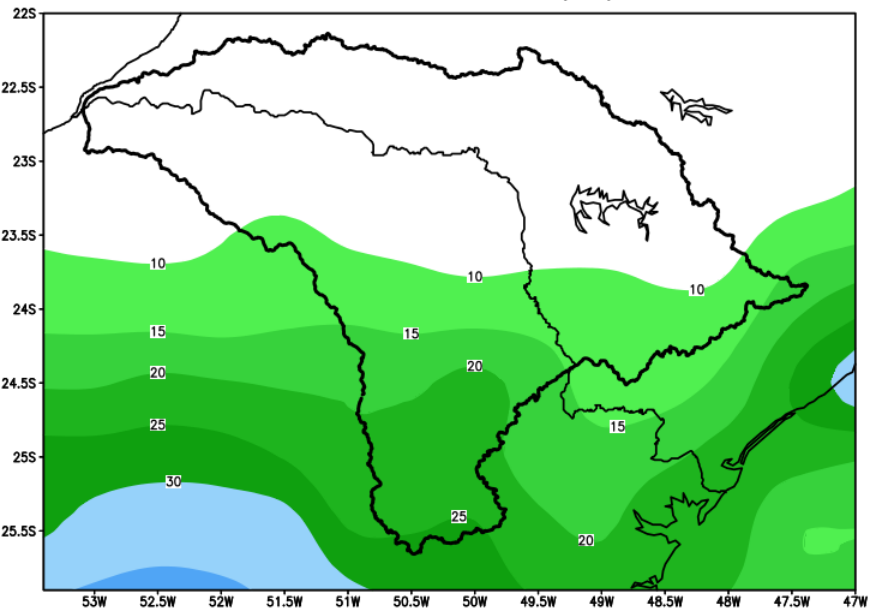
Anomalia de Precipitacao BR (mm)  
Periodo: 2022042800 a 2022050500



Fonte: GFS/NOAA

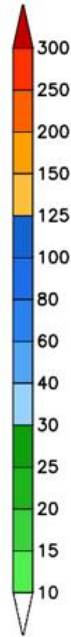
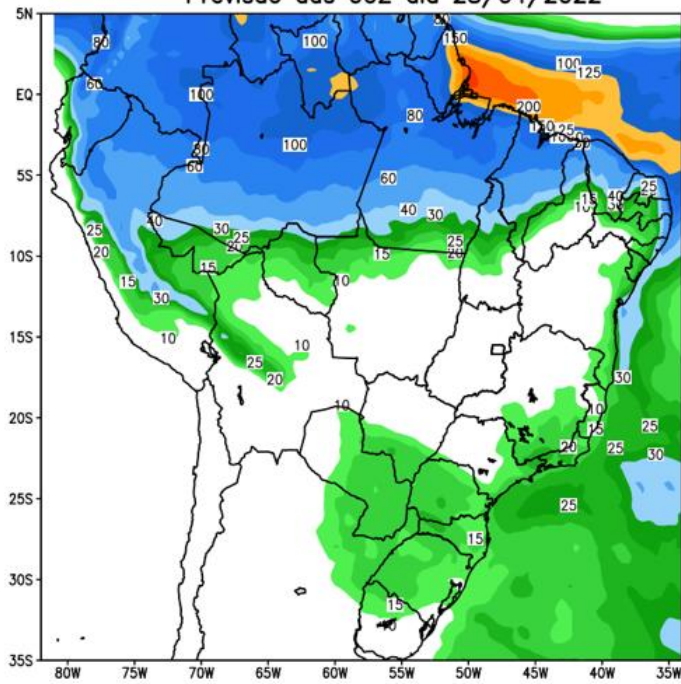
# Bacia do rio Paranapanema

GEFS / Bacia do Rio Paranapanema  
Precipitacao acumulada em 7 dias (mm)  
Previsao das 00Z dia 28/04/2022

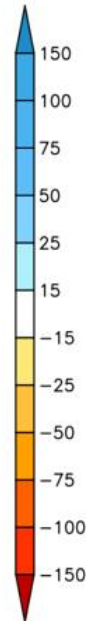
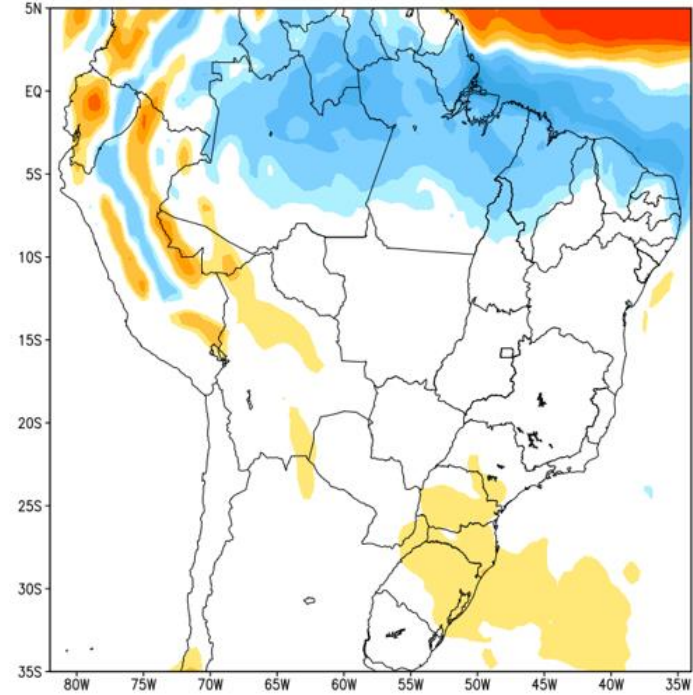


# Tendência para a 2ª Semana

GEFS / BRASIL  
Precipitacao acumulada 2aSem (mm)  
Previsao das 00Z dia 28/04/2022

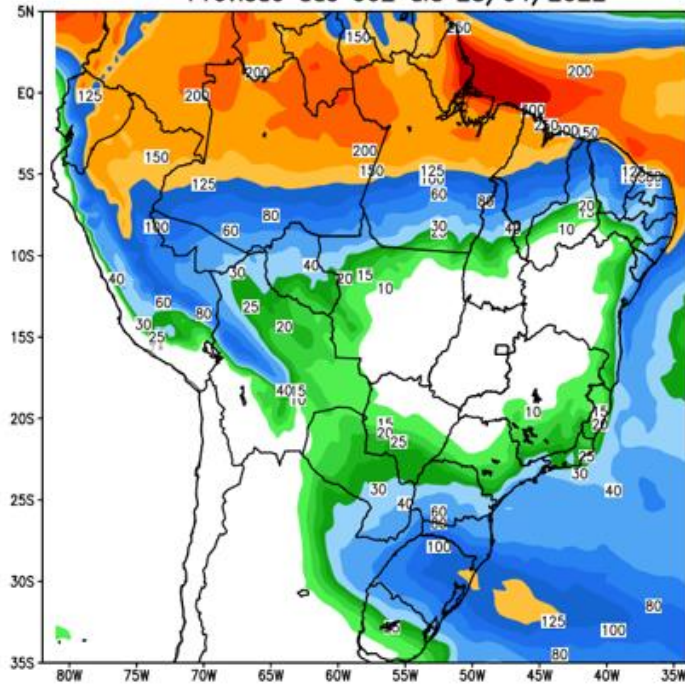


Anomalia de Precipitacao BR (mm)  
Periodo: 2022050600 a 2022051200

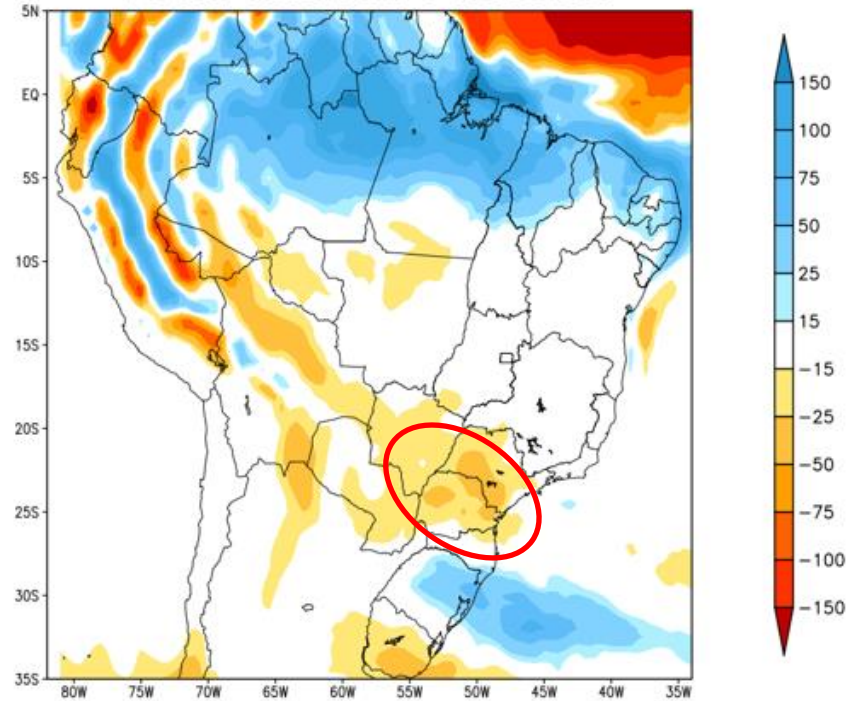


# Tendência para as próximas duas semanas

GEFS / BRASIL  
Precipitacao acumulada 14 dias (mm)  
Previsao das 00Z dia 28/04/2022

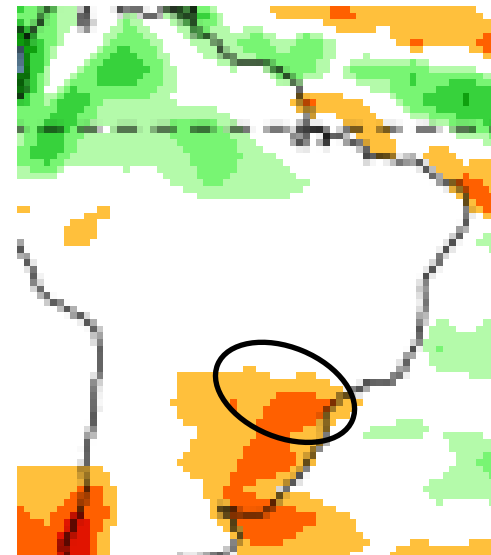
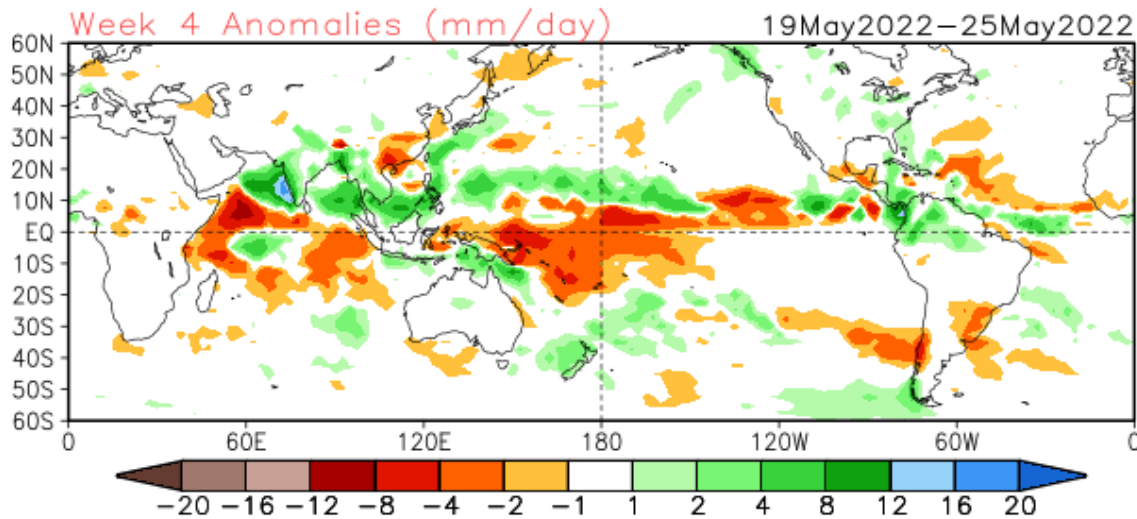
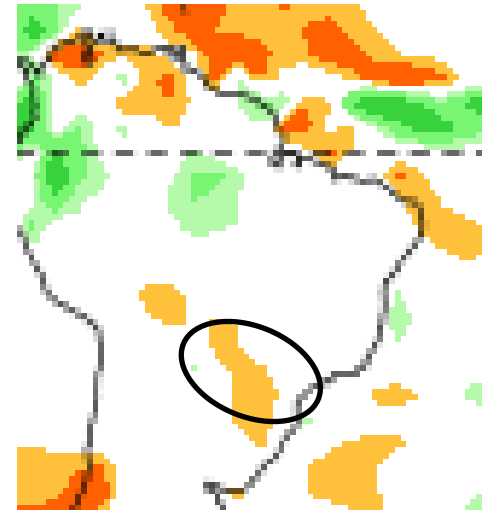
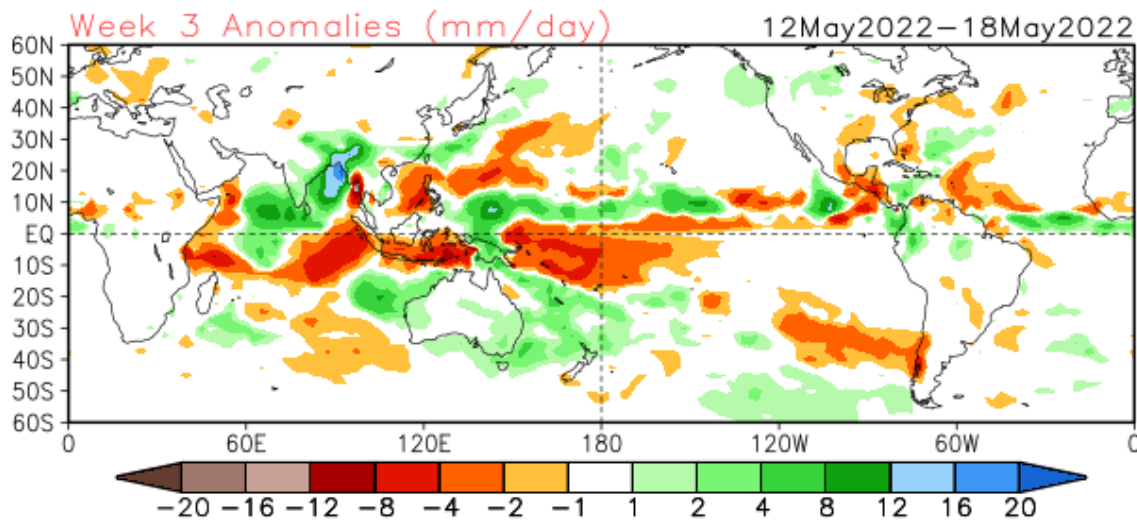


Anomalia de Precipitacao BR (mm)  
Periodo: 2022042800 a 2022051200



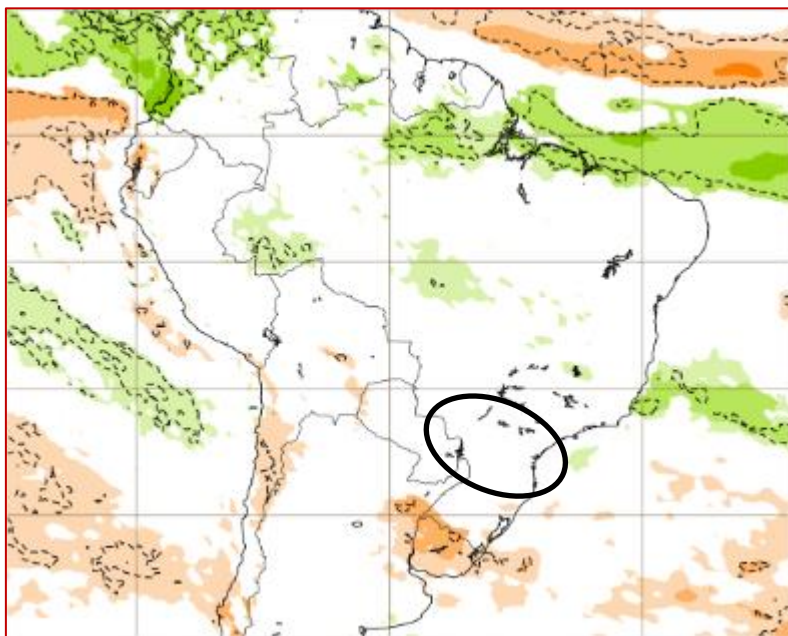


# Tendência para 3ª e 4ª semanas

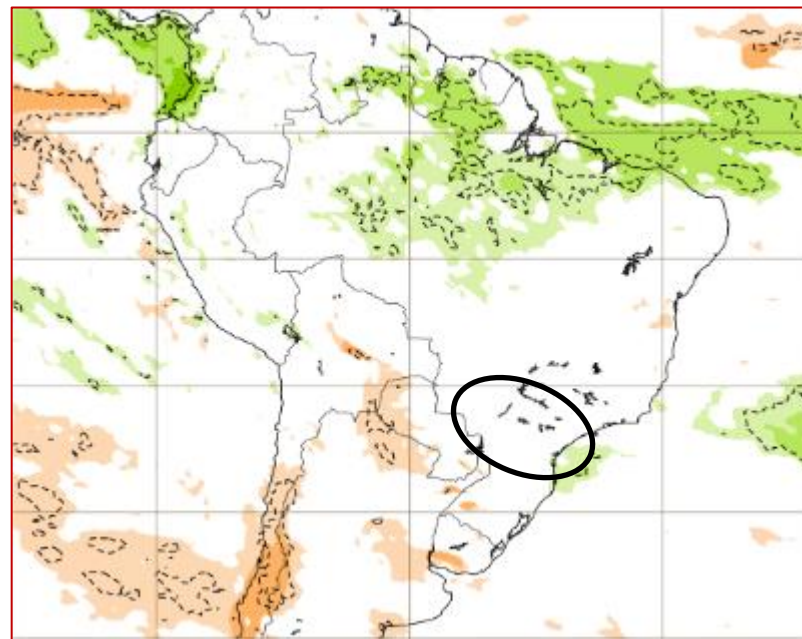


# Tendência para 3ª e 4ª semanas

09-16/05

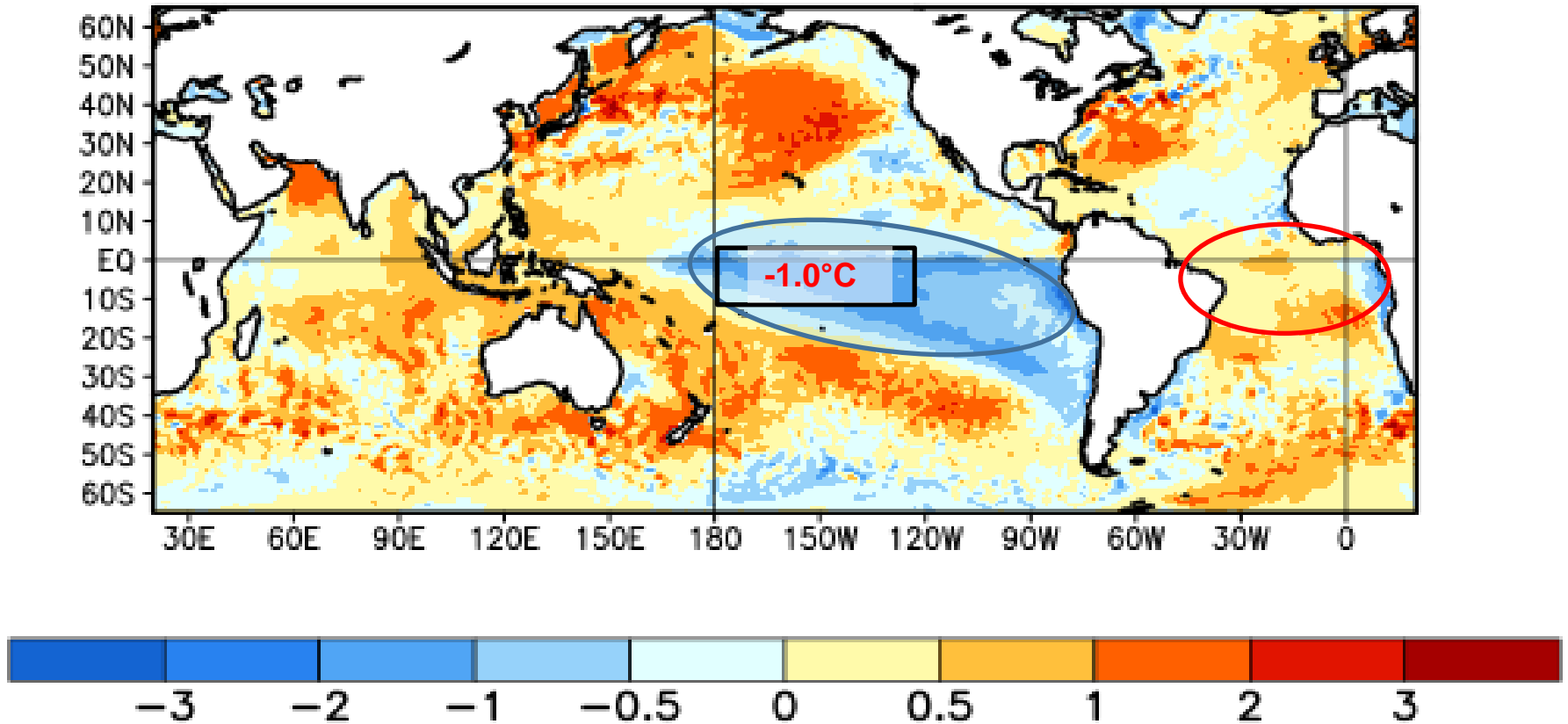


16-23/05



Status Atual: **La Niña**

Average SST Anomalies  
27 MAR 2022 – 23 APR 2022



# Previsão sazonal de Chuva (MJJ)

