

Monitoramento e Previsões de chuva para a Bacia do Rio Paranapanema

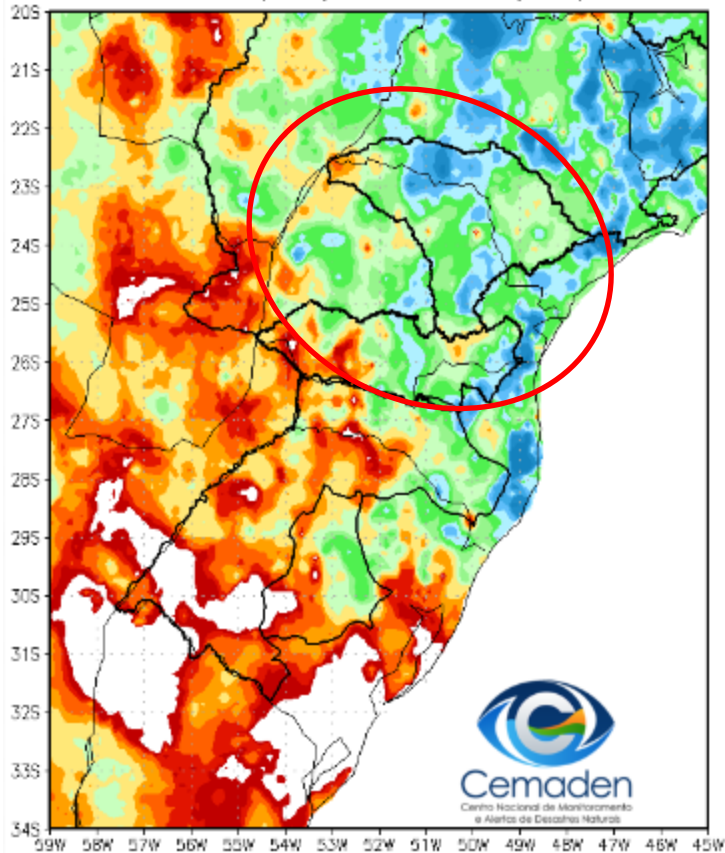


Cemaden
Centro Nacional de Monitoramento
e Alertas de Desastres Naturais

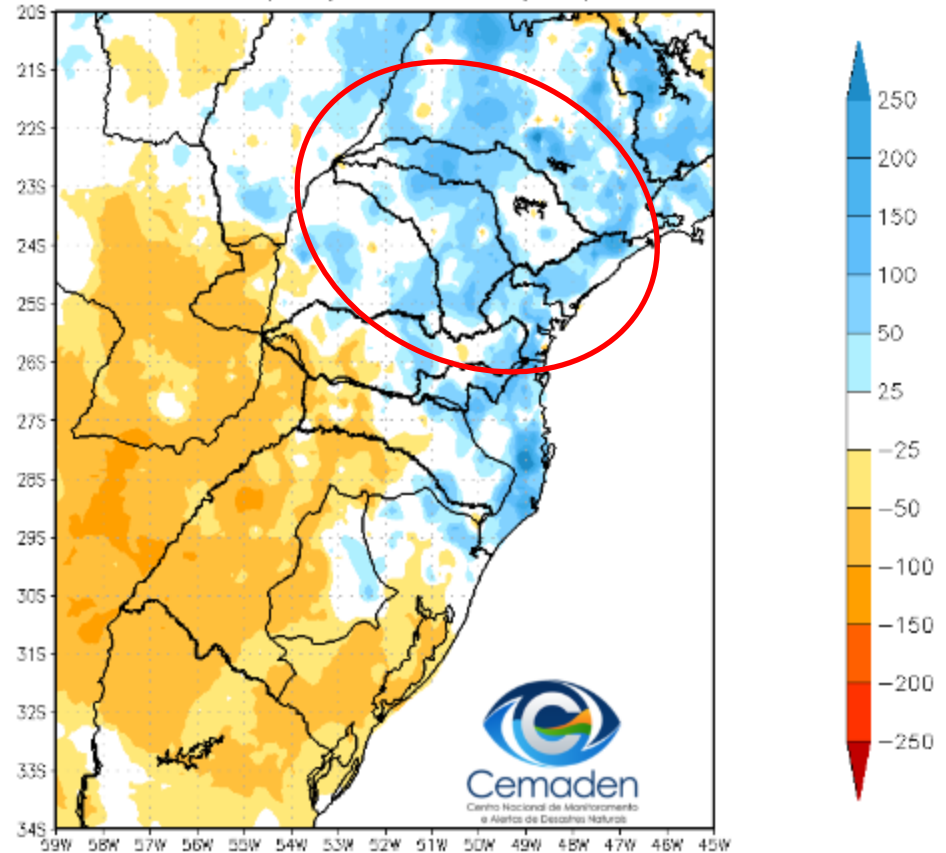
16 de Novembro de 2022

Precipitação acumulada nos últimos 30 dias

Precipitação Acumulada (mm) A.S.
Período: 30/11/2022 a 15/12/2022



Anomalia de Precipitação (mm) A.S.
Período: 30/11/2022 a 15/12/2022

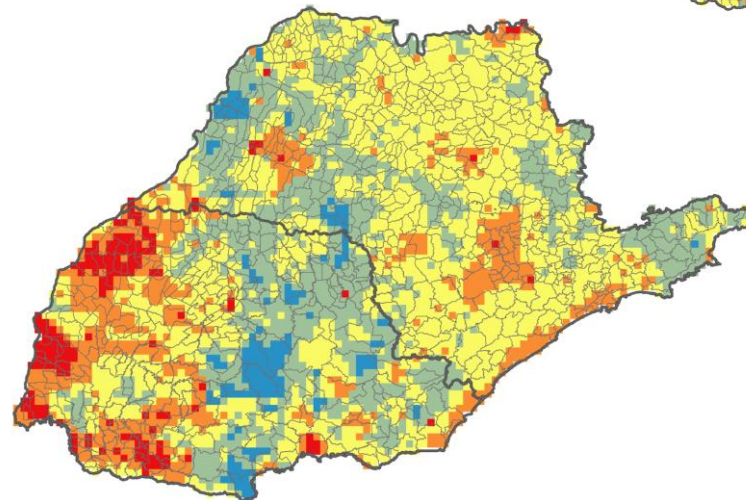
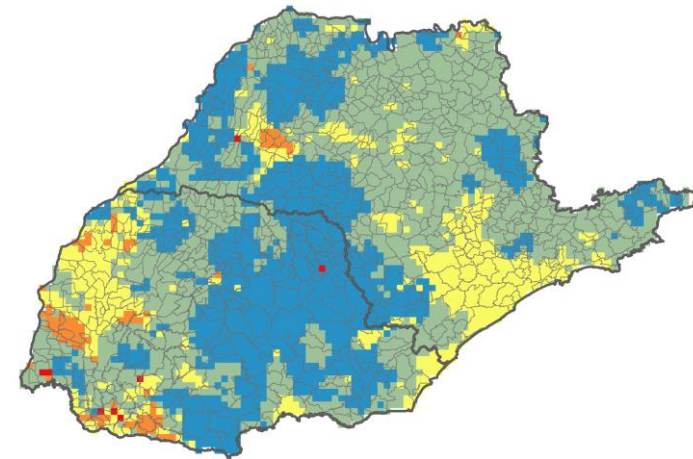
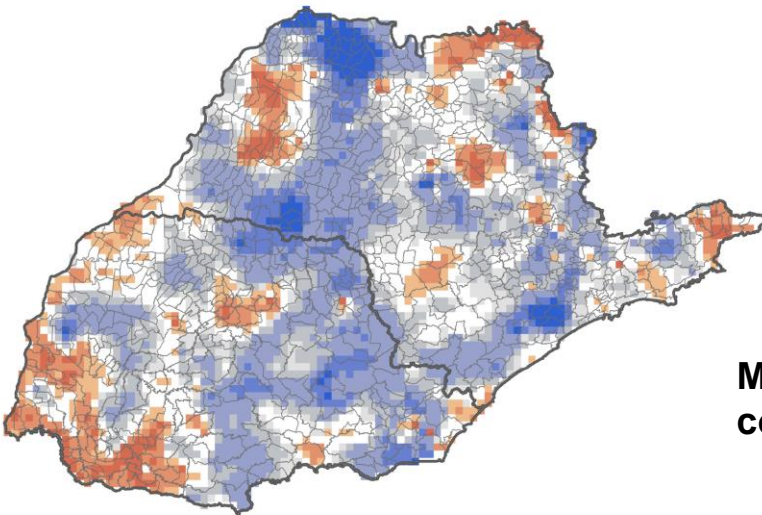
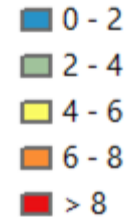
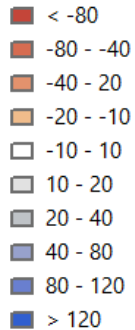


Precipitação – Bacia do rio Paranapanema: 01 a 14 de Dezembro/2022

Anomalia (mm)

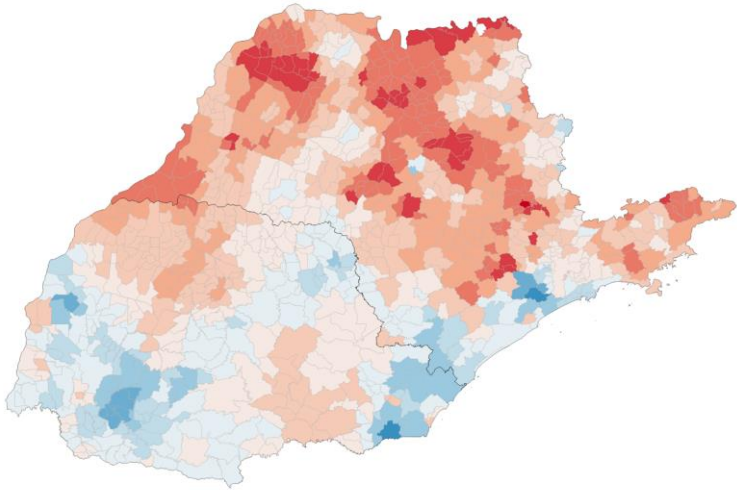
Total de dias sem chuva

Máximo de dias consecutivos sem chuva

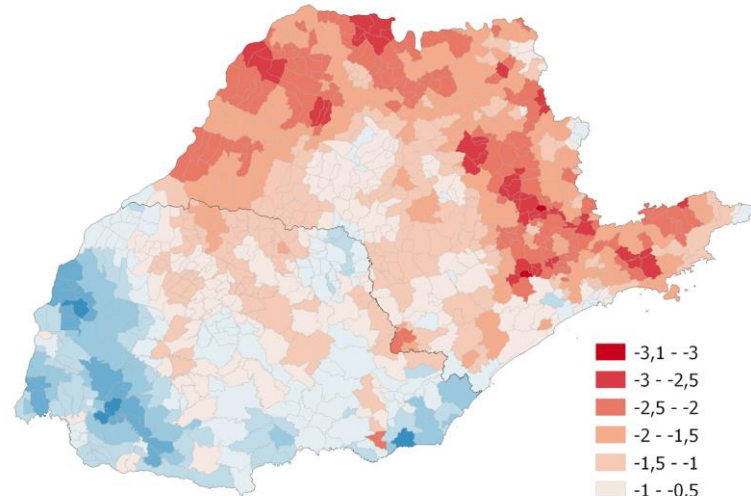


SPI: Dezembro de 2022

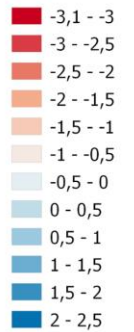
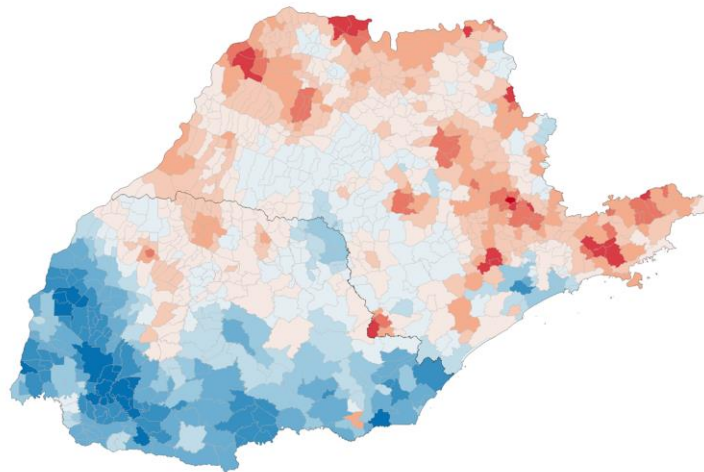
SPI03



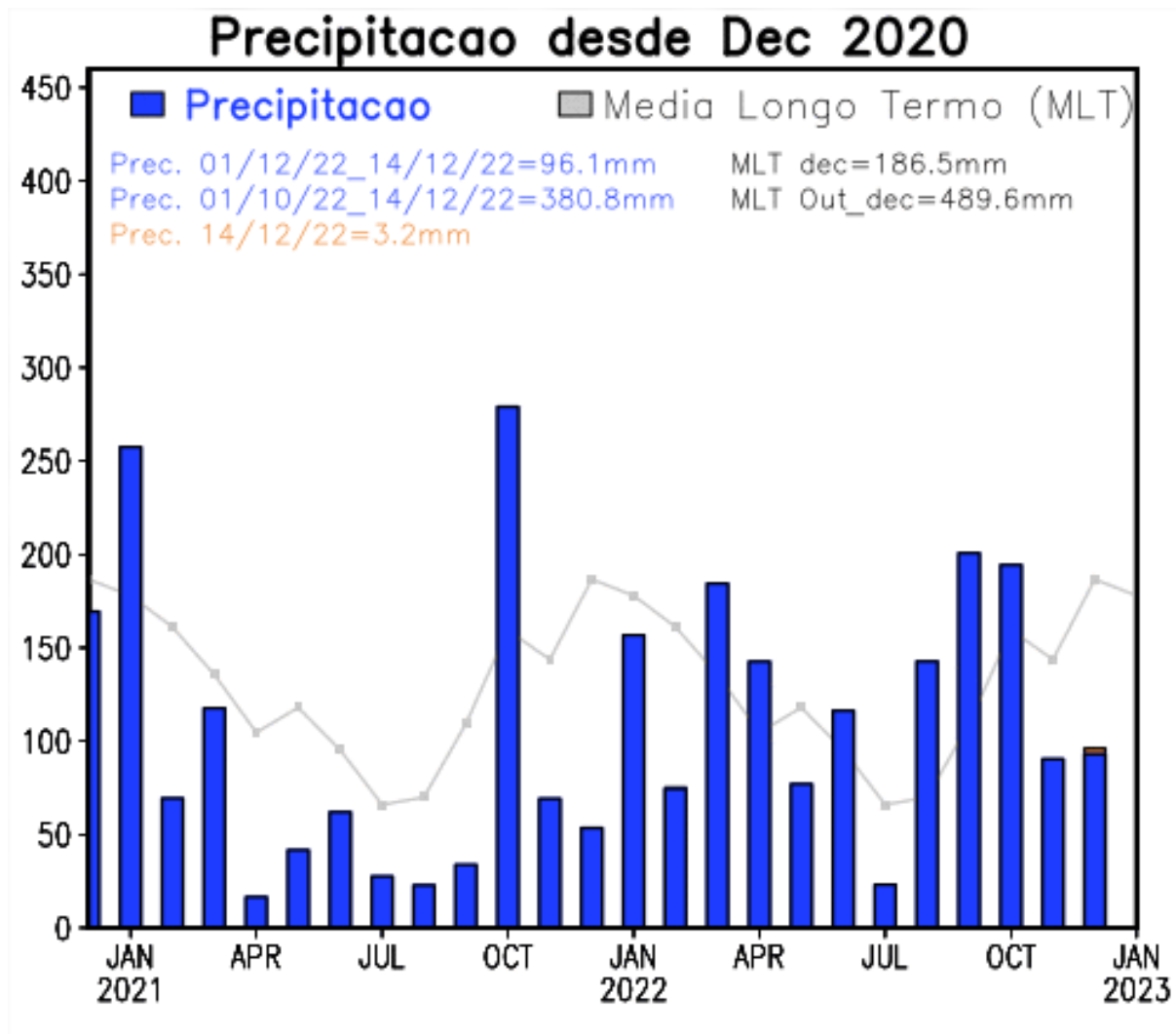
SPI24



SPI12

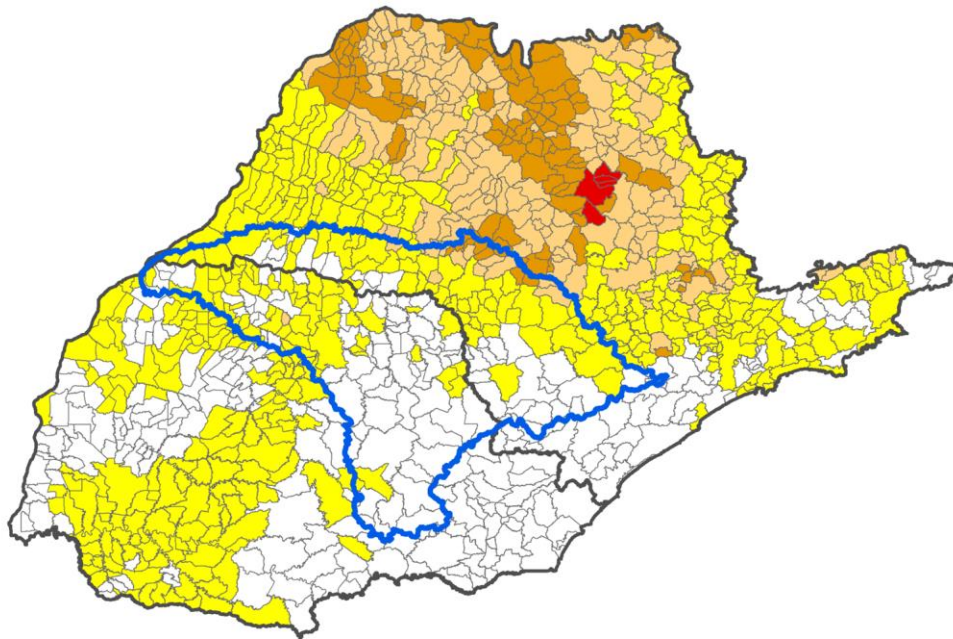


Evolução temporal da precipitação



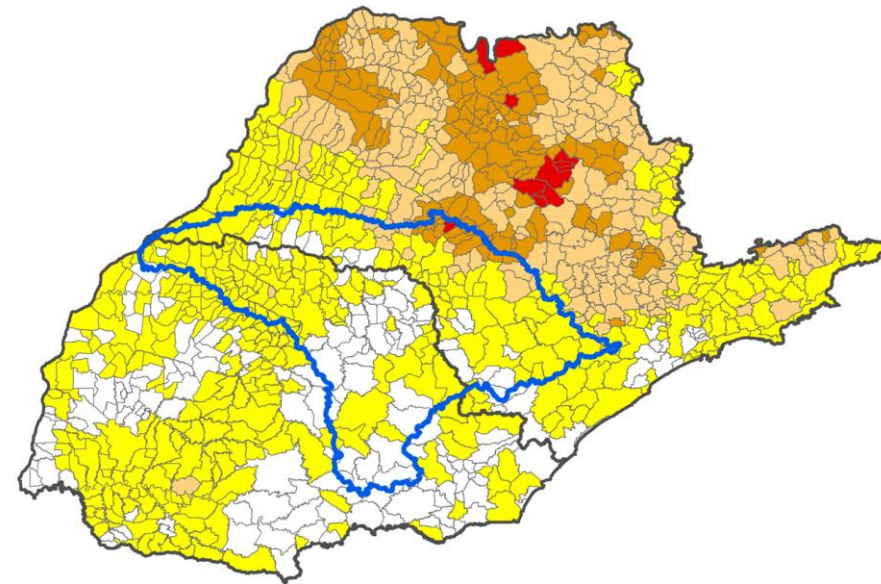
Índice Integrado de Seca – IIS nas escalas de 3 e 6 meses

IIS3



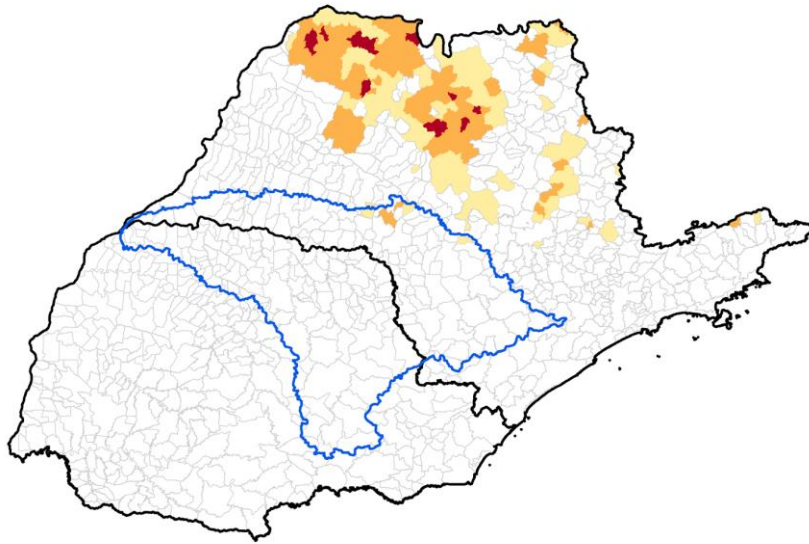
- 6 municípios com **seca extrema** e 114 com **seca severa**

IIS6



- 15 municípios com **seca extrema** e 139 com **seca severa**

Áreas Agroprodutivas afetadas pela seca: Bacia do rio Paranapanema

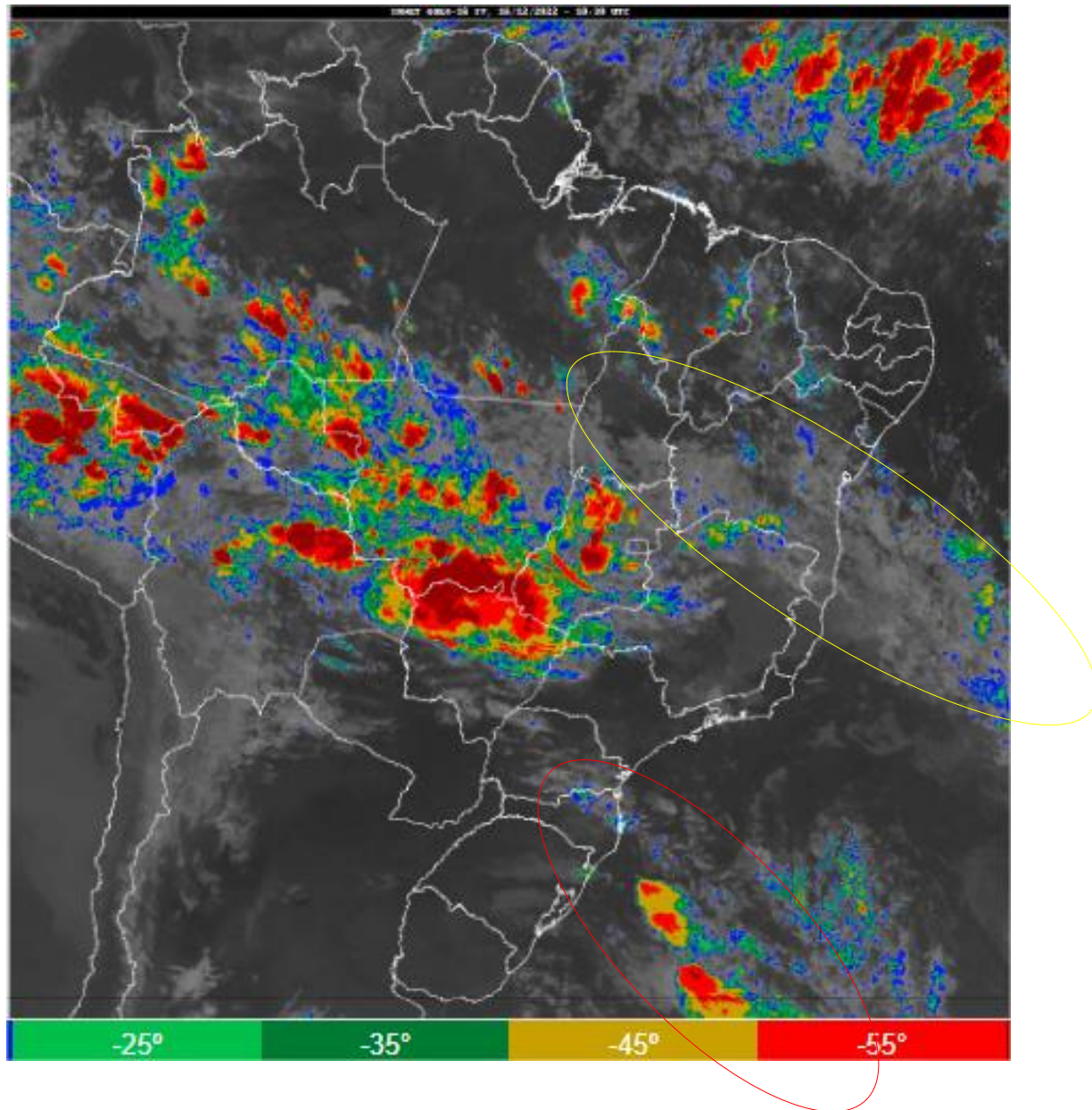


UF	40 a 60%	60 - 80%	> 80%
PR	0	0	0
SP	75	88	15

	40 a 60%	60 - 80%	> 80%	Imóveis Rurais Impactados > 40%
São Paulo				
Minifundio	20868 (11%)	25995 (13%)	4402 (2%)	51265 (26%)
Pequena Propriedade	13662 (13%)	16801 (16%)	2127 (2%)	32590 (31%)
Media Propriedade	4879 (13%)	4678 (13%)	464 (1%)	10021 (27%)

*Estimativa a partir dos dados do Cadastro Ambiental Rural para minifúndios, pequenas e médias propriedades e IIS-3 de nov/22)

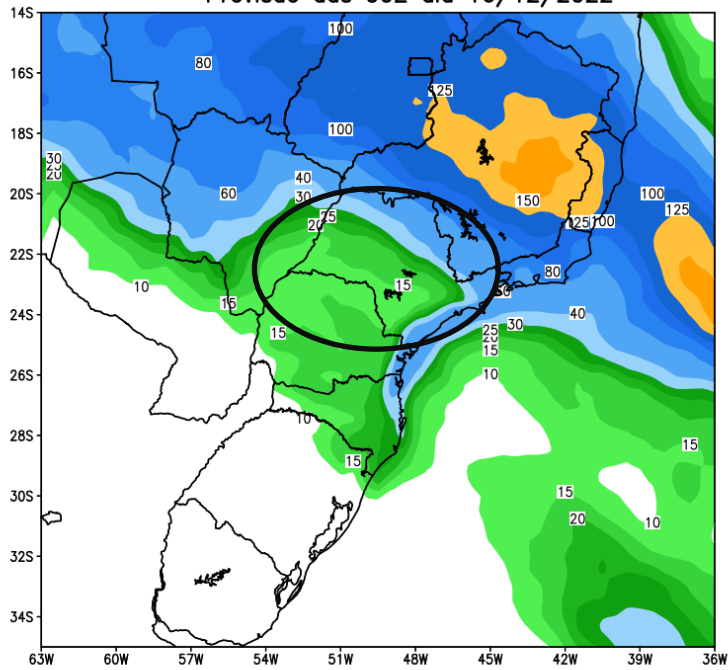
Situação meteorológica atual



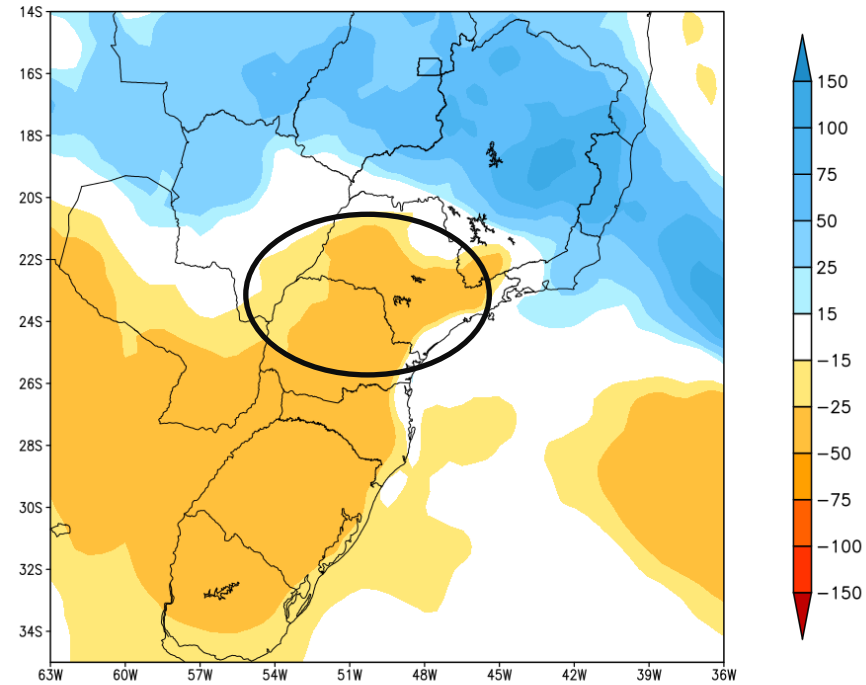
Fonte: INMET

Previsão de chuva próximos 7 dias

GEFS / BRASIL_SUL
Precipitacao acumulada 1aSem (mm)
Previsao das 00Z dia 16/12/2022



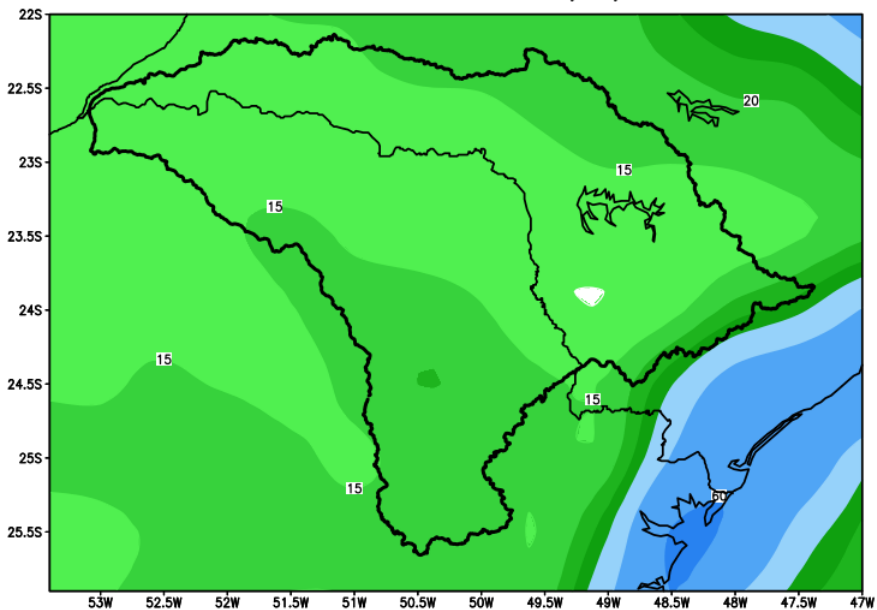
Anomalia de Precipitacao BR_SUL (mm)
Periodo: 2022121600 a 2022122300



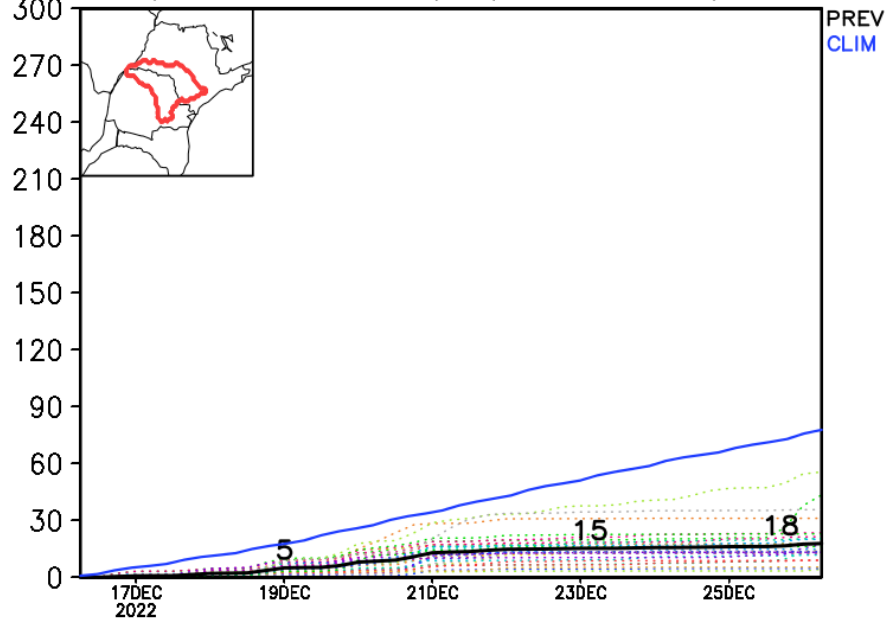
MODELO GFS

Previsão para a bacia do rio Paranapanema

GEFS / Bacia do Rio Paranapanema
Precipitação acumulada em 7 dias (mm)
Previsão das 00Z dia 16/12/2022

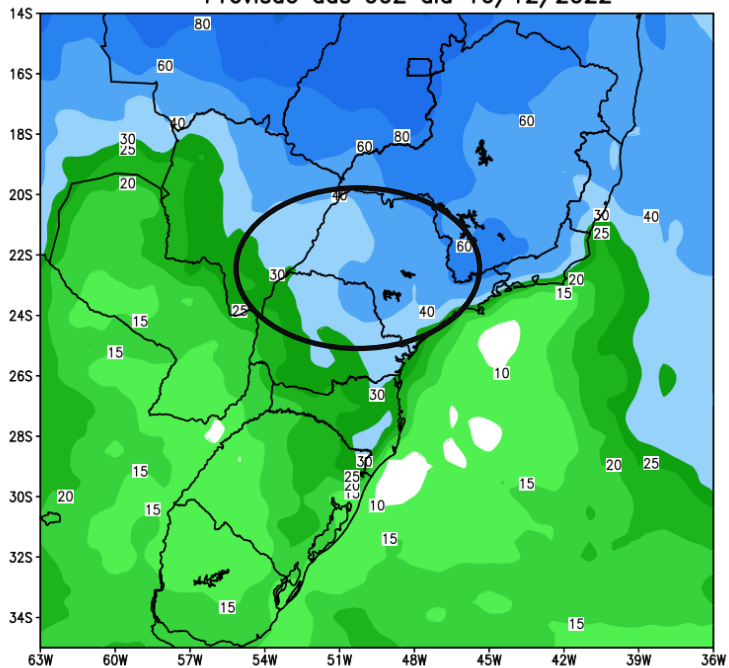


Precipitação acumulada (mm): Bacia Paranapanema

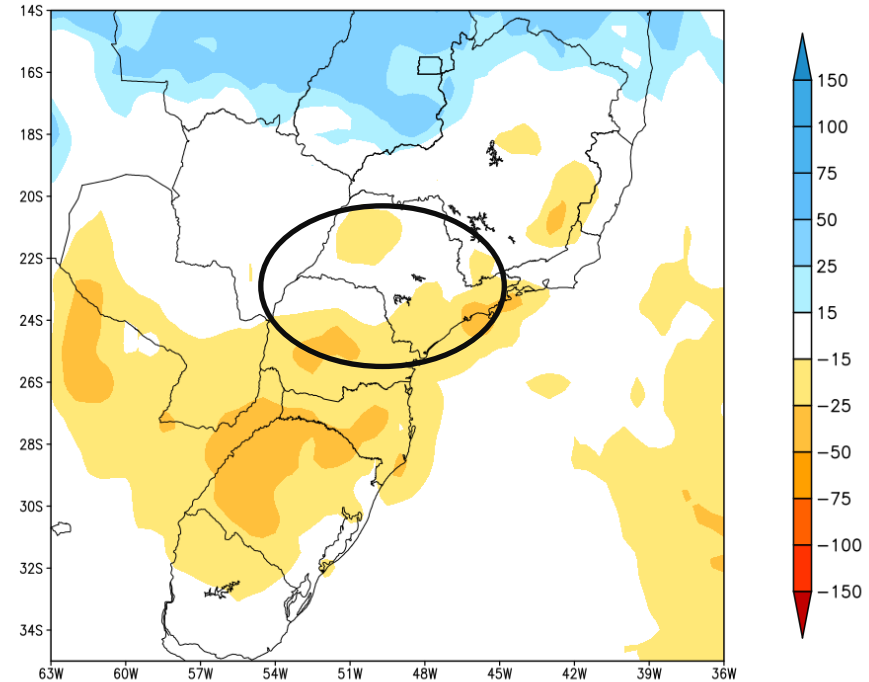


Tendência para a segunda semana

GEFS / BRASIL_SUL
Precipitacao acumulada 2aSem (mm)
Previsao das 00Z dia 16/12/2022



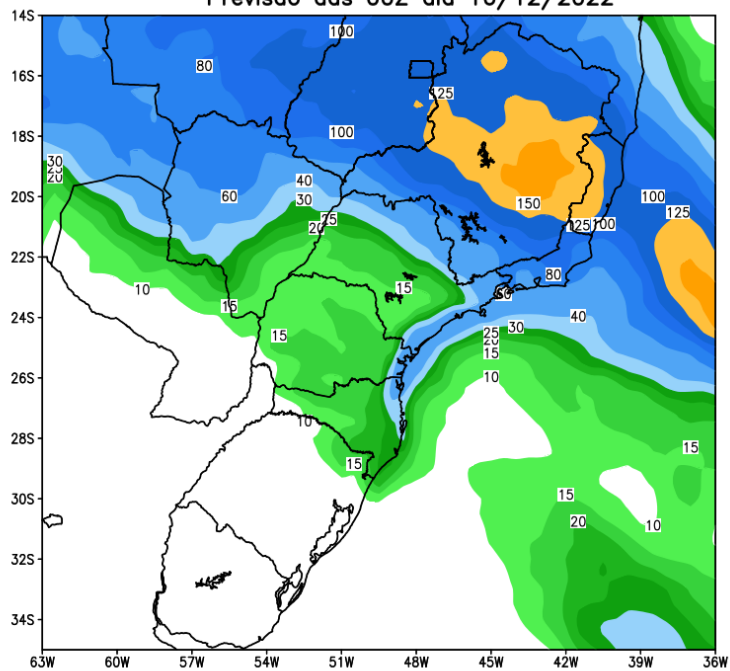
Anomalia de Precipitacao BR_SUL (mm)
Periodo: 2022122400 a 2022123000



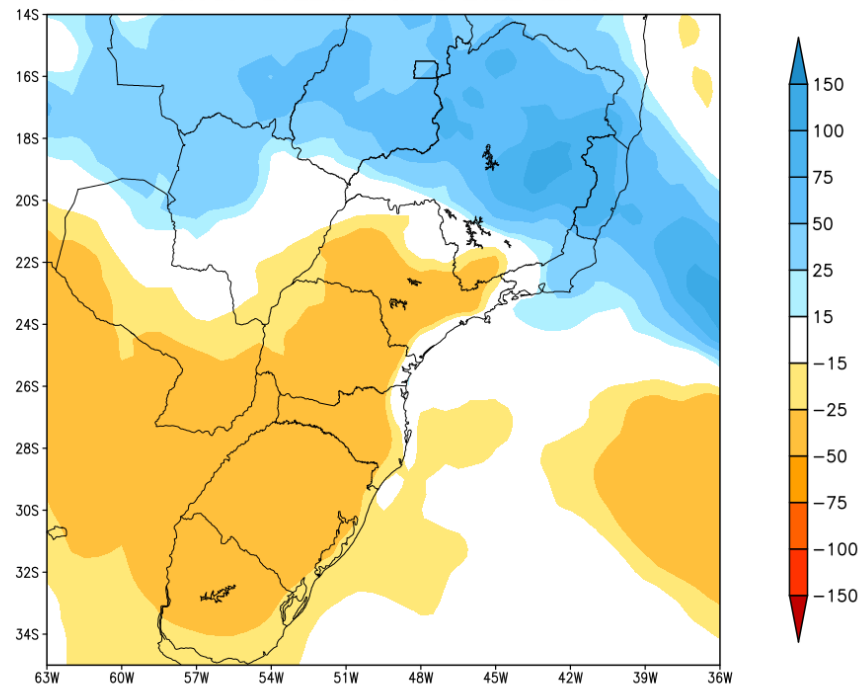
MODELO GFS

Tendência para as duas próximas semanas

GEFS / BRASIL_SUL
Precipitacao acumulada 1aSem (mm)
Previsao das 00Z dia 16/12/2022



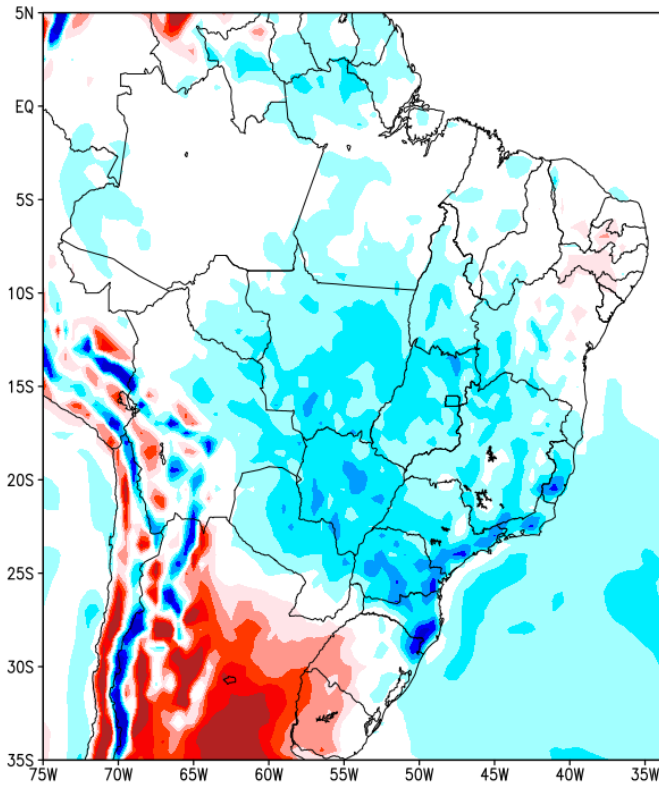
Anomalia de Precipitacao BR SUL (mm)
Periodo: 2022121600 a 2022122300



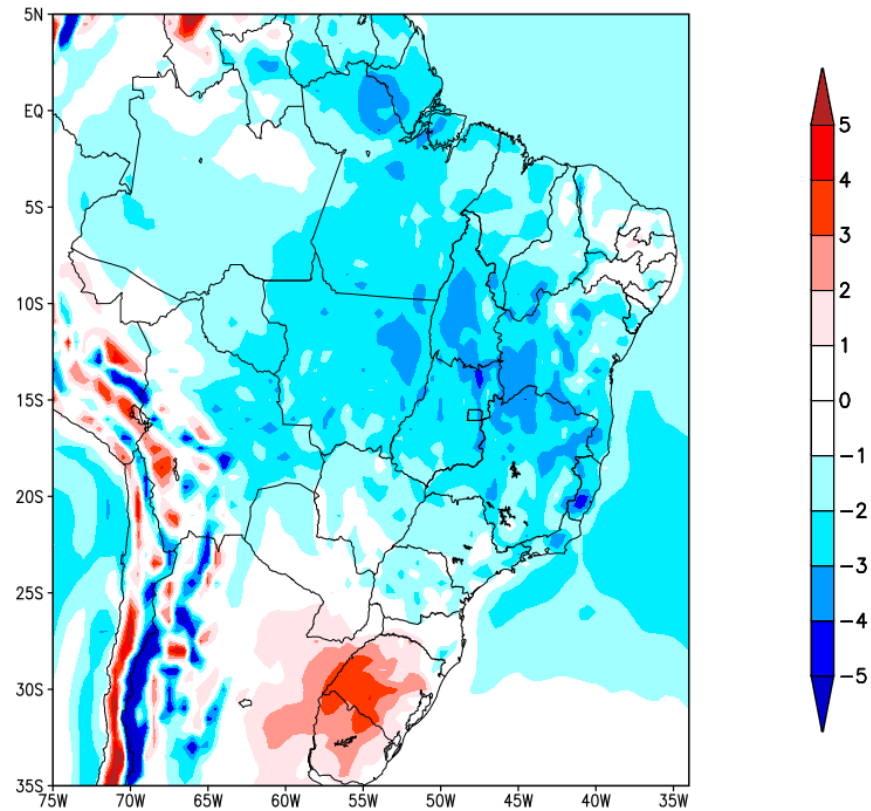
MODELO GFS

Previsão de Temperatura

Anomalia de Temperatura BR (C)
Período: 2022121600 a 2022122300



Anomalia de Temperatura BR (C)
Período: 2022122400 a 2022123000

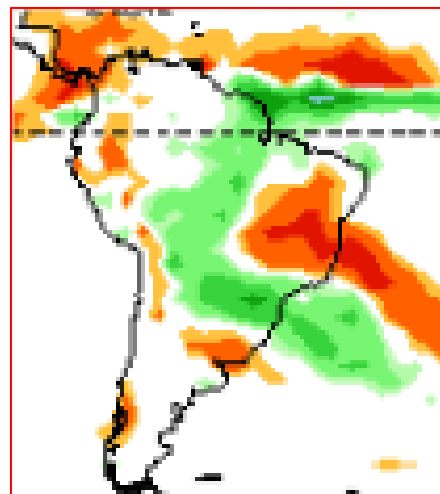
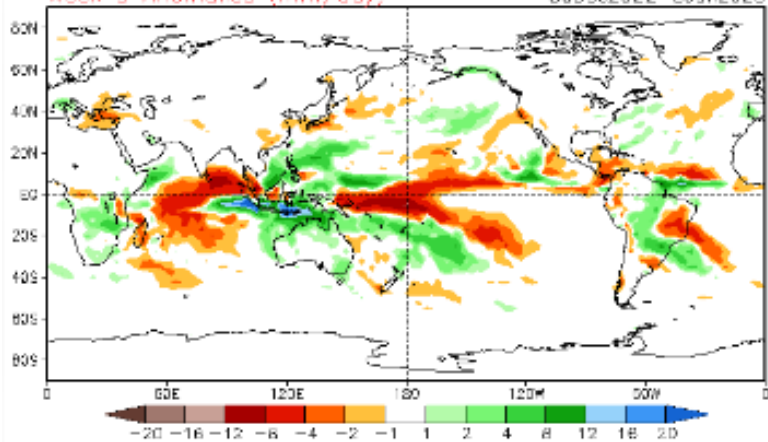


Tendência 3a e 4a semanas

16 Member Ensemble Mean Forecast from 15Dec2022

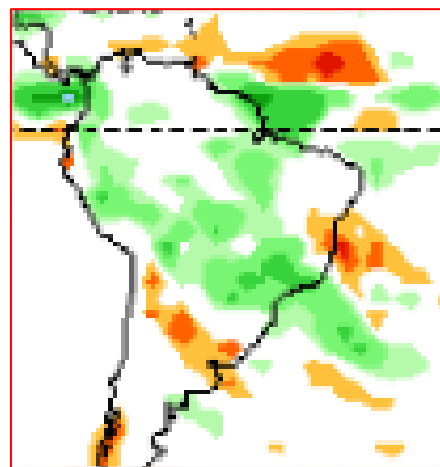
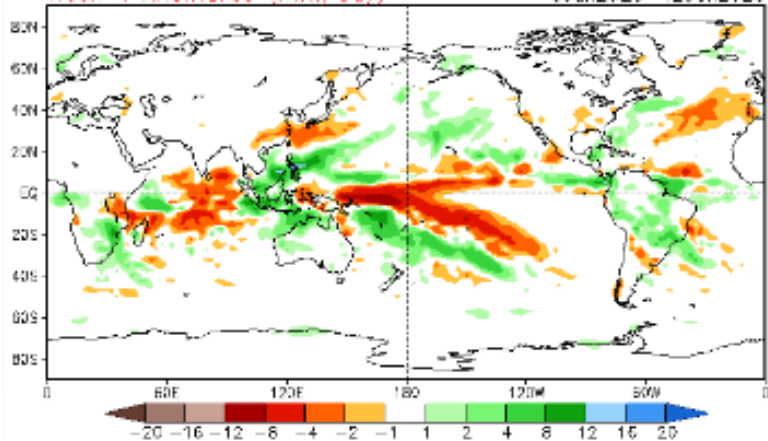
Week 3 Anomalies (mm/day)

30Dec2022 - 0Jan2023



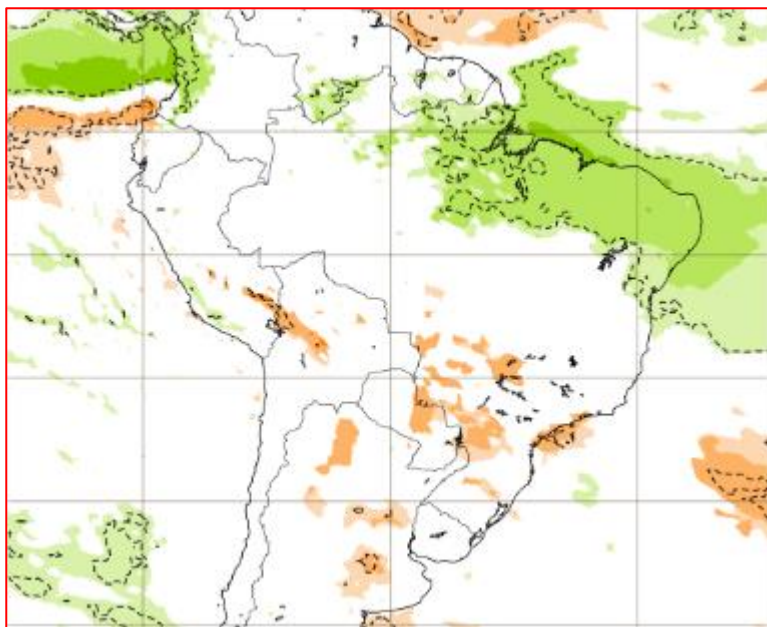
Week 4 Anomalies (mm/day)

06Jan2023 - 12Jan2023

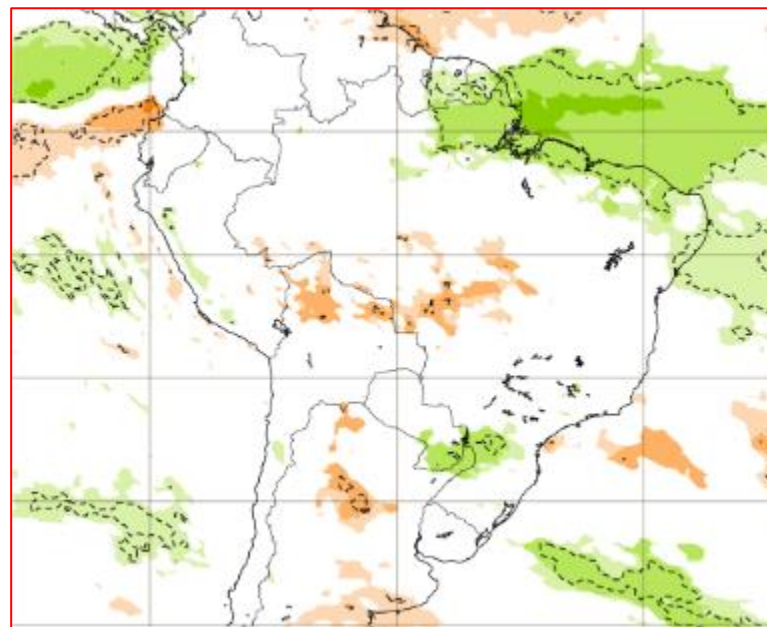


Tendência para 3ª e 4ª semanas

02-09/01

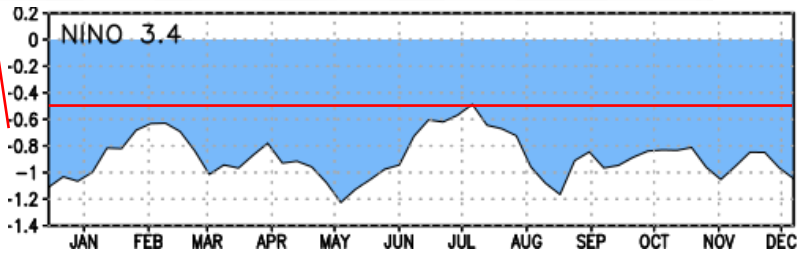
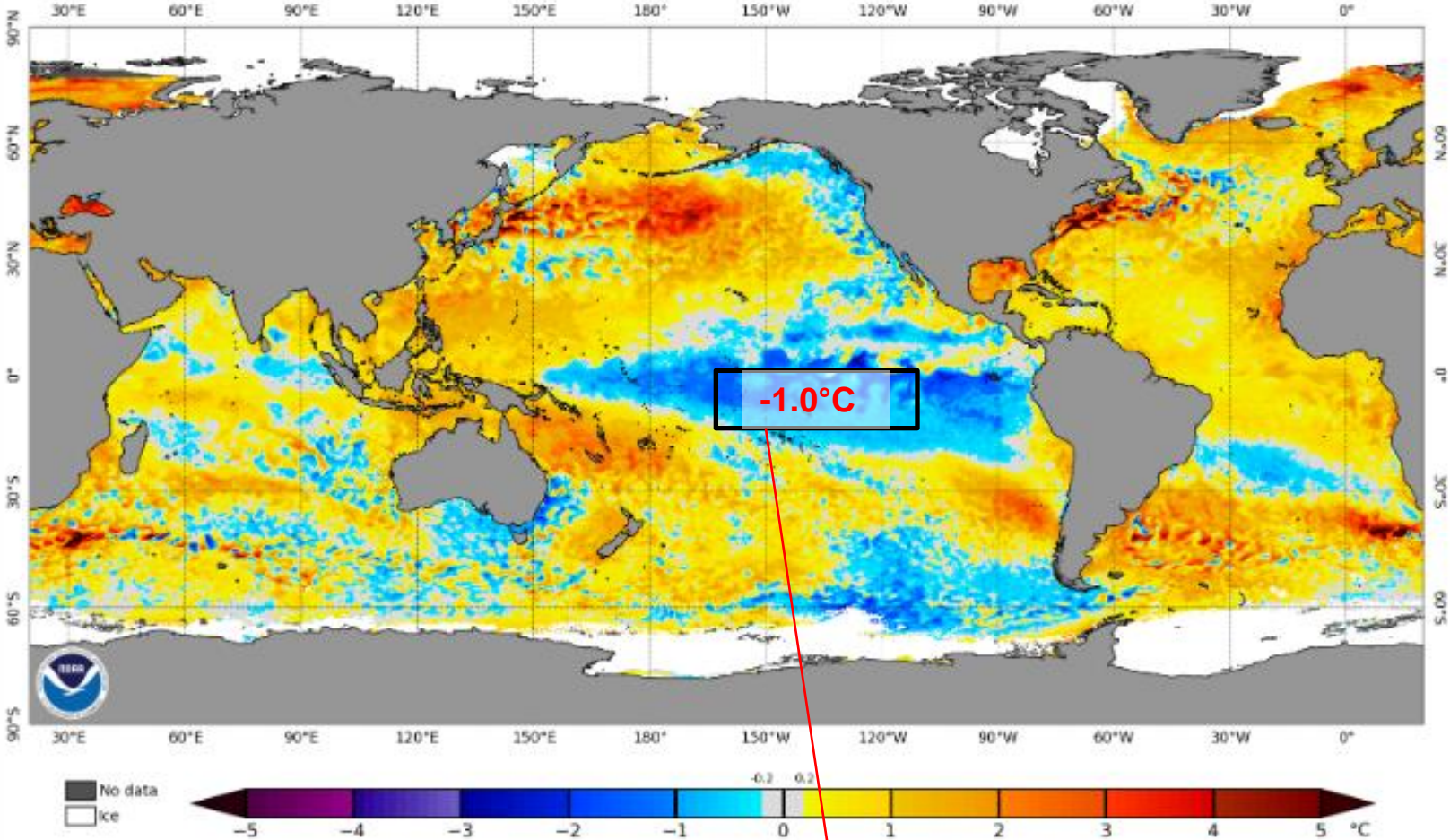


09-16/01



Status Atual: La Niña

NOAA Coral Reef Watch Daily 5km SST Anomalies (v3.1) 14 Dec 2022

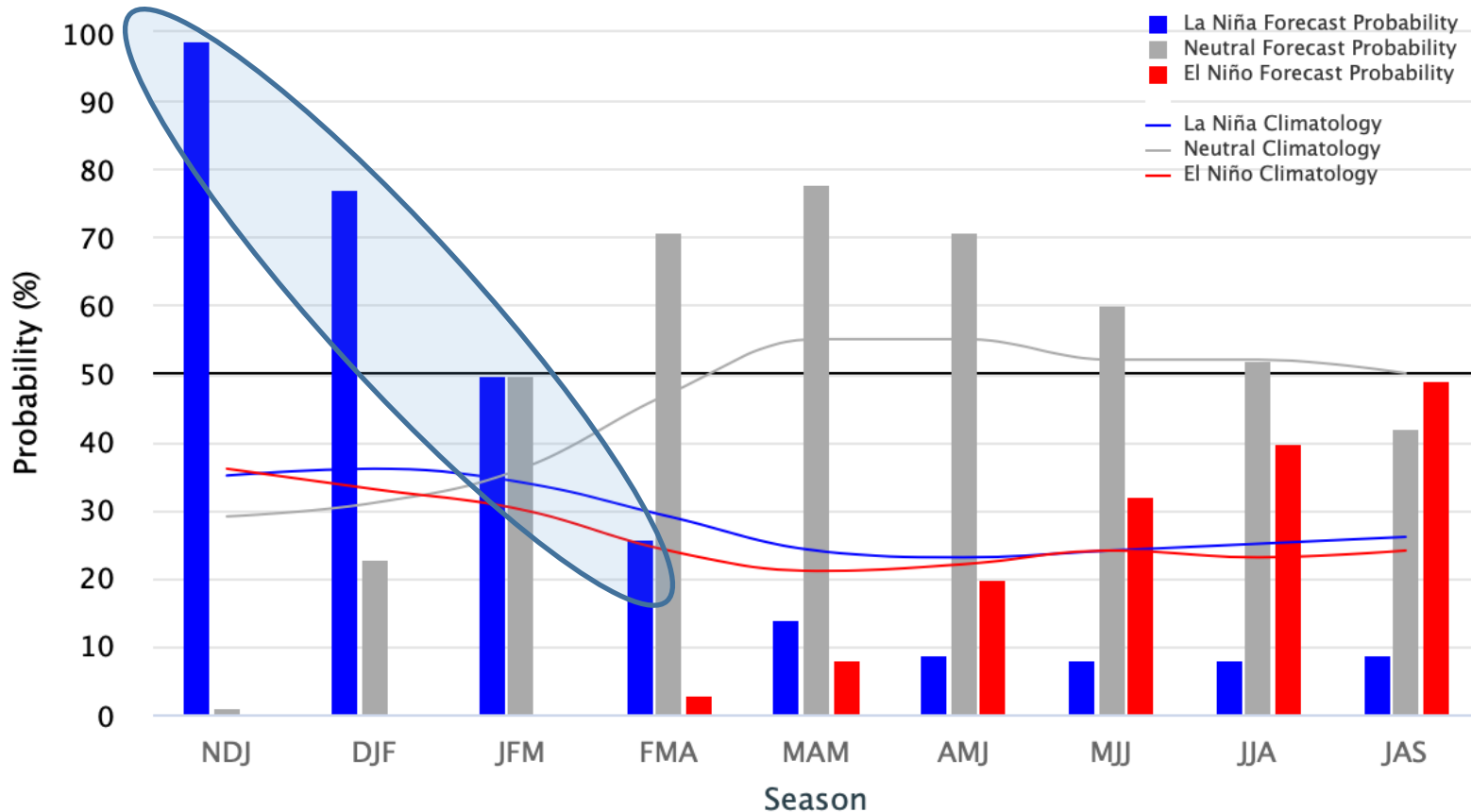


FONTE: NOAA

Previsão do “La Niña”

Early-December 2022 CPC Official Probabilistic ENSO Forecasts

ENSO state based on NINO3.4 SST Anomaly
Neutral ENSO: $-0.5\text{ }^{\circ}\text{C}$ to $0.5\text{ }^{\circ}\text{C}$



Status Atual: **La Niña**

FONTE: NOAA

Previsão sazonal de Chuva JFM

