

# Monitoramento e Previsões de Chuva para a Bacia do Rio Paraíba do Sul

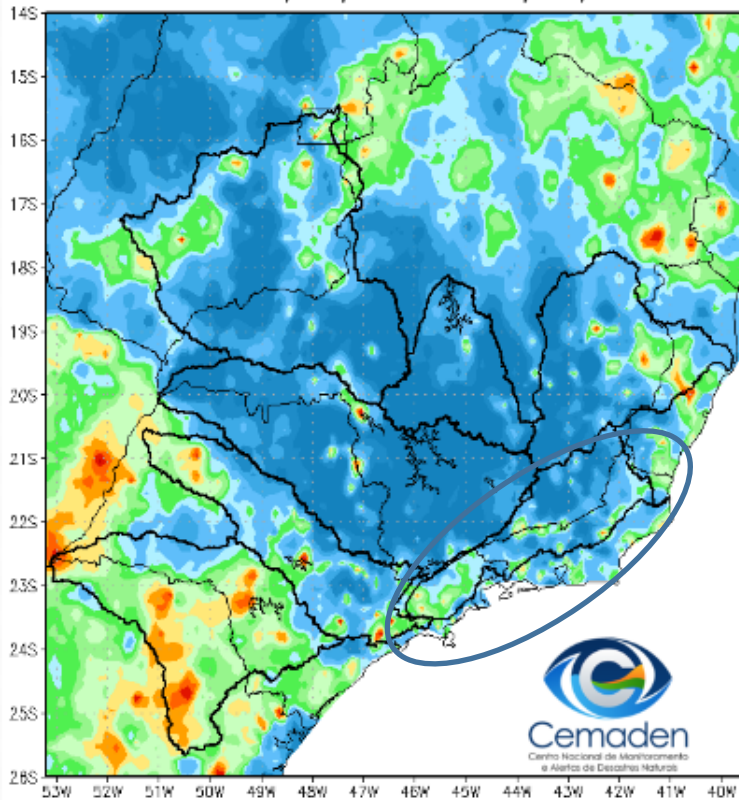


**Cemaden**  
Centro Nacional de Monitoramento  
e Alertas de Desastres Naturais

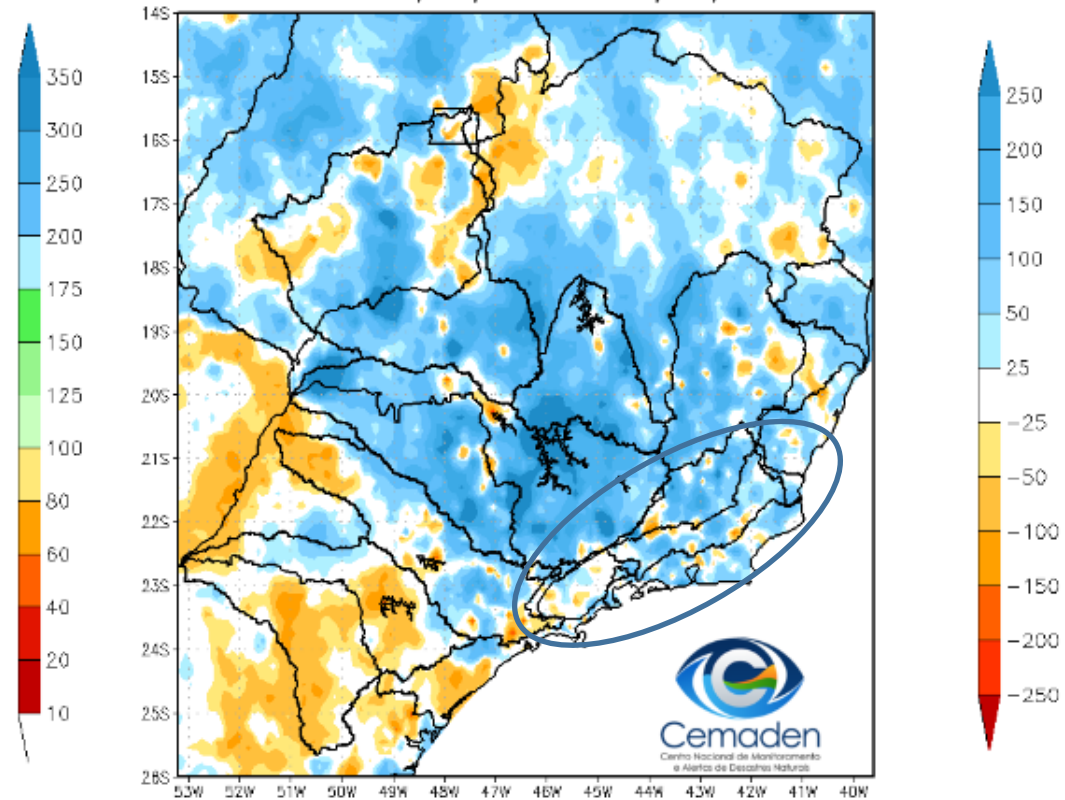
17 de Janeiro de 2023

# Precipitação acumulada nos últimos 30 dias

Precipitação Acumulada (mm) A.S.  
Período: 17/12/2022 a 16/01/2023

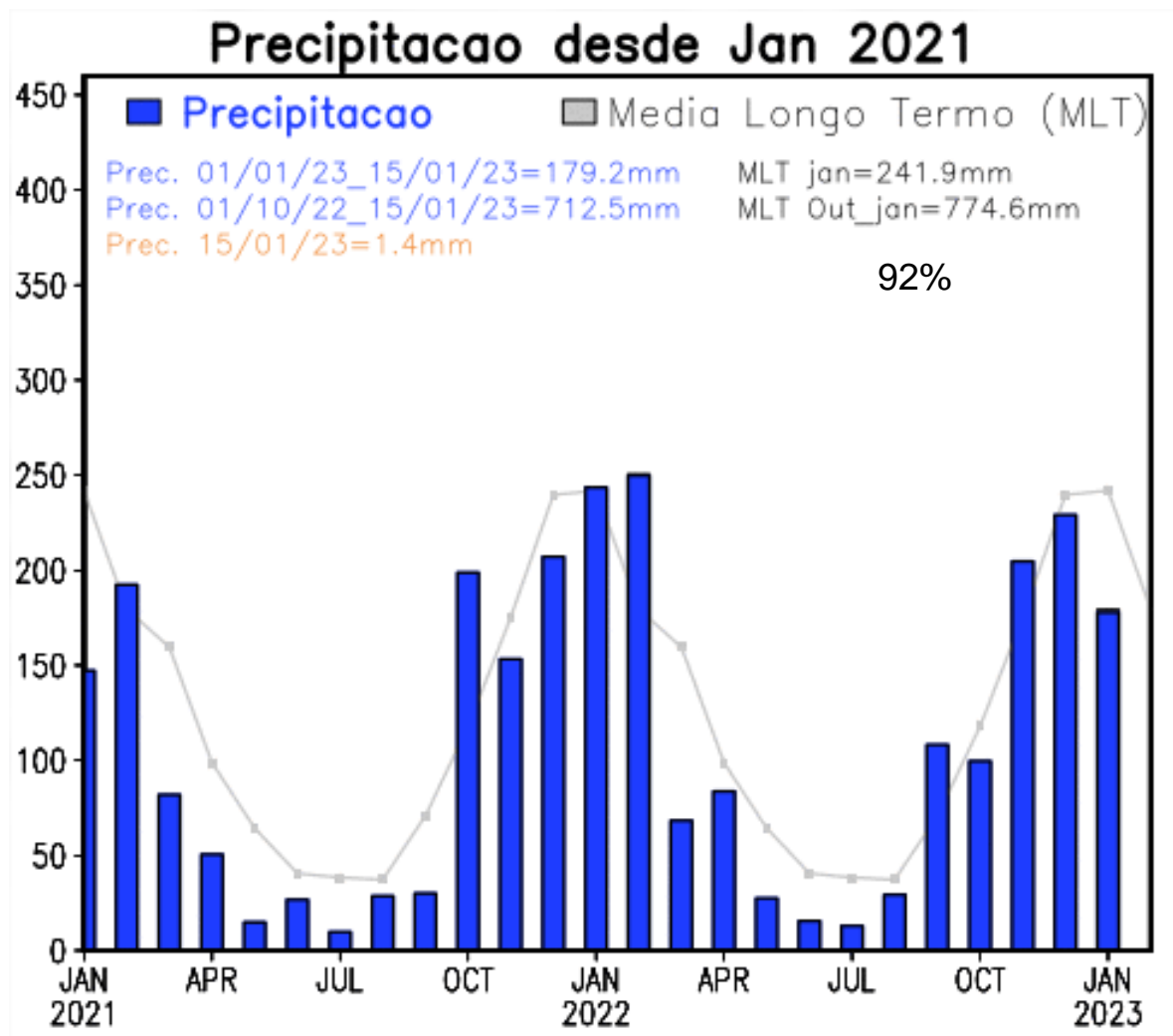


Anomalia de Precipitação (mm) A.S.  
Período: 17/12/2022 a 16/01/2023

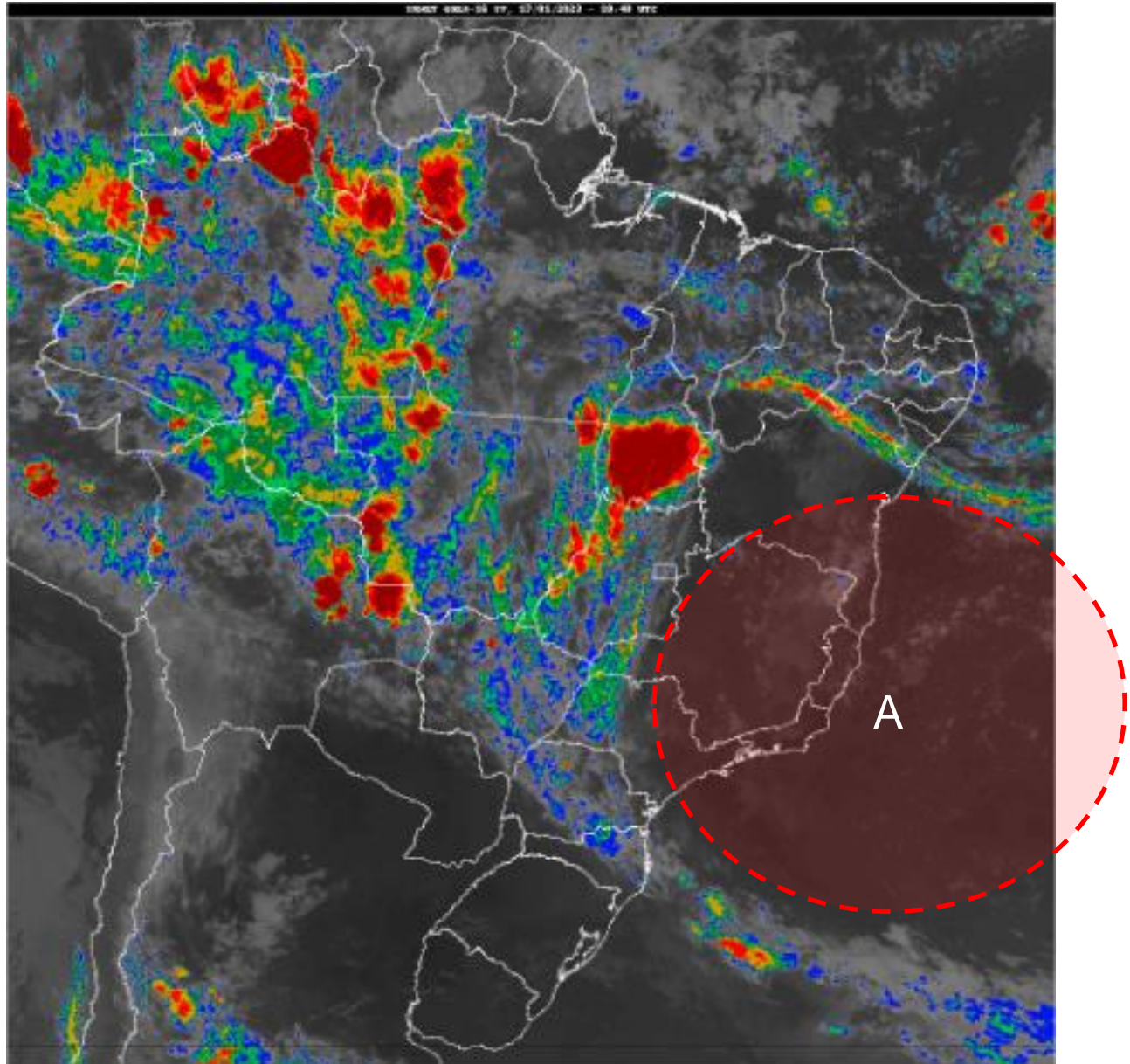


FONTE DOS DADOS INPE

# Precipitação nos últimos 2 anos

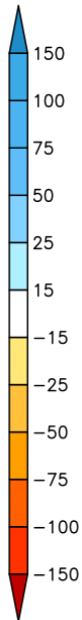
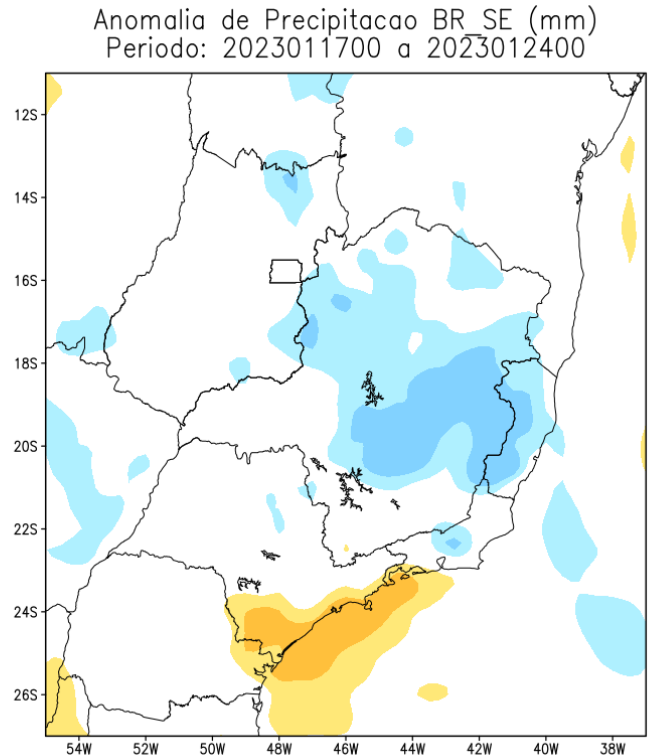
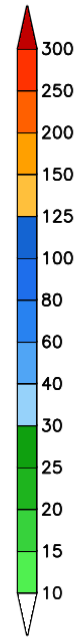
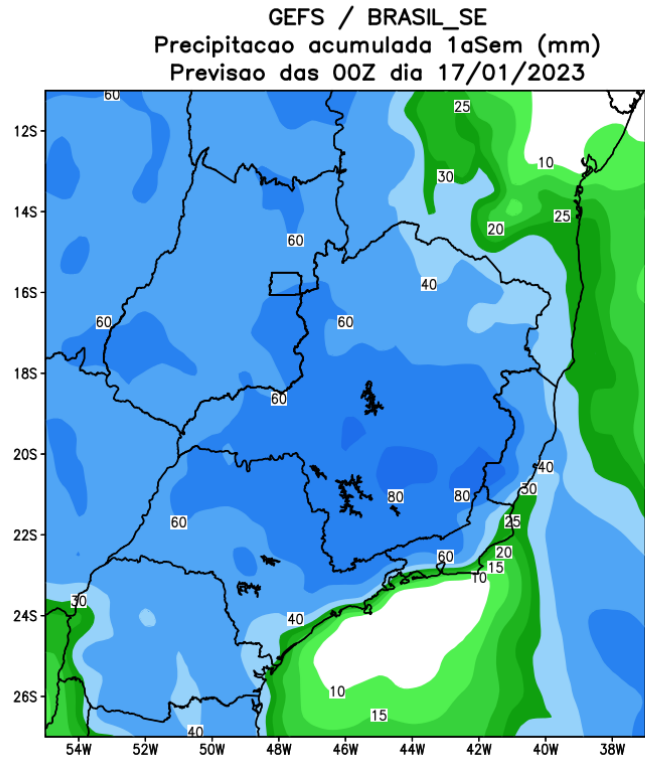


# Situação meteorológica atual



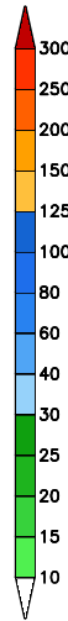
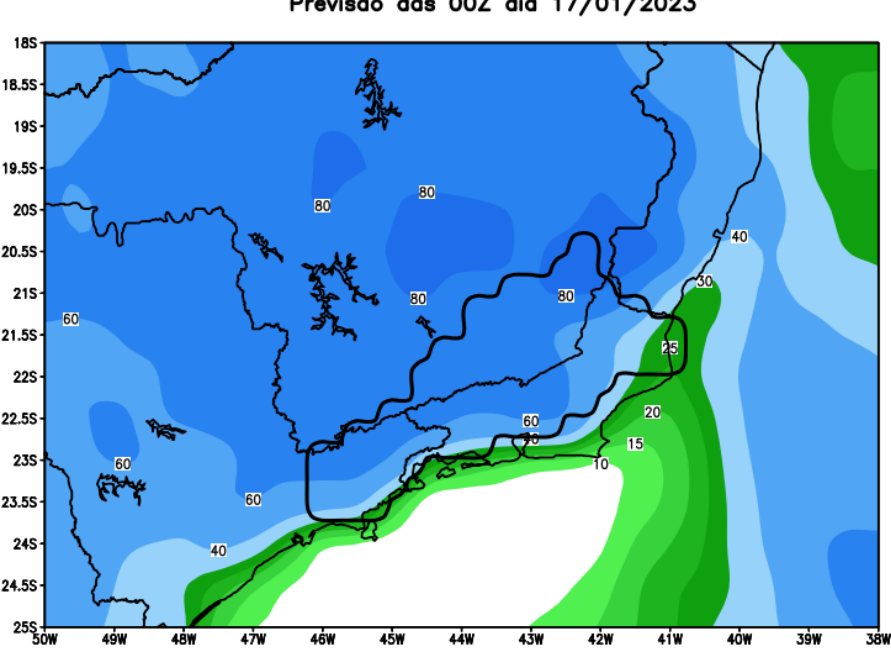
Fonte: INMET

# Previsão de chuva para os próximos 7 dias

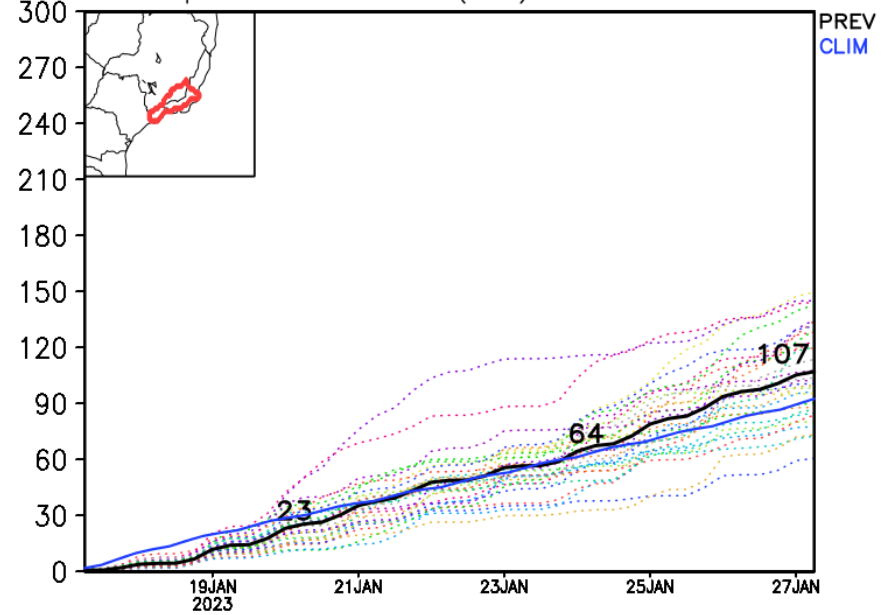


# Rio Paraíba do Sul

GEFS / Bacia do Rio Paraíba do Sul  
Precipitacao acumulada em 7 dias (mm)  
Previsao das 00Z dia 17/01/2023



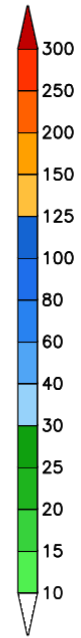
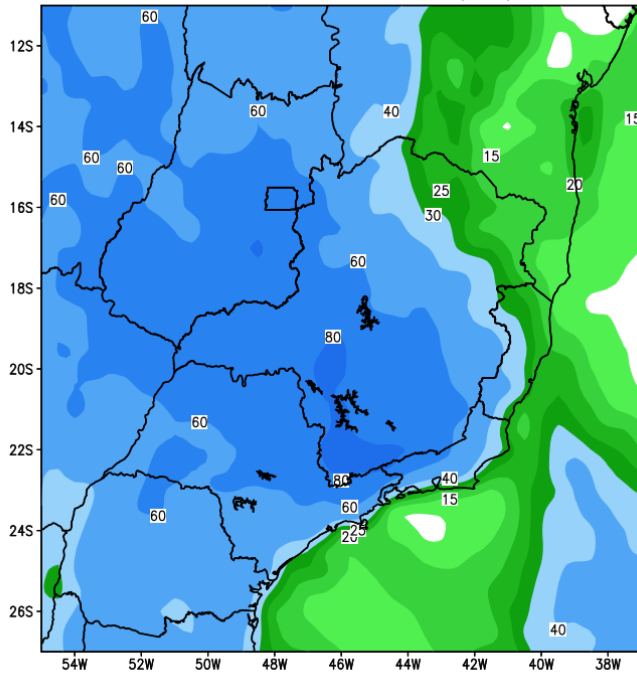
Precipitacao acumulada (mm): Bacia ParaíbaSul



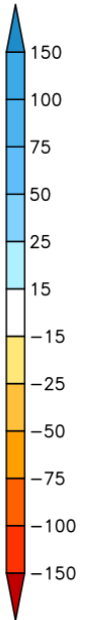
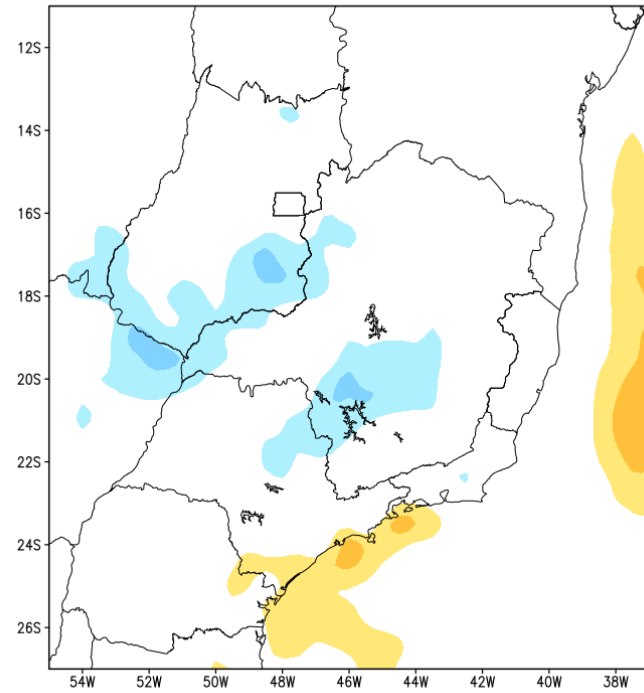
Modelo GFS/NOAA

# Tendência para a 2a semana

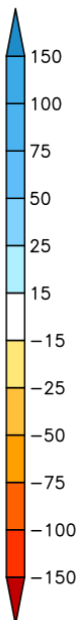
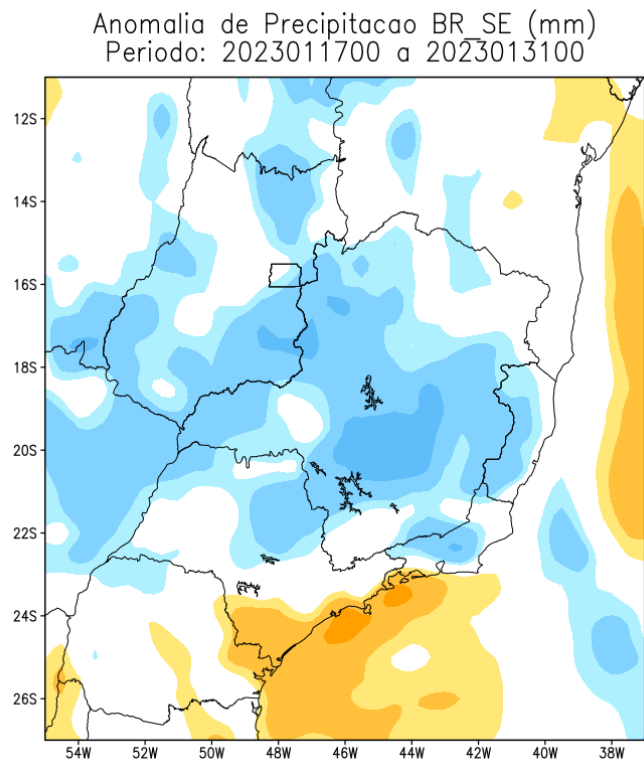
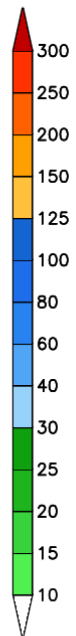
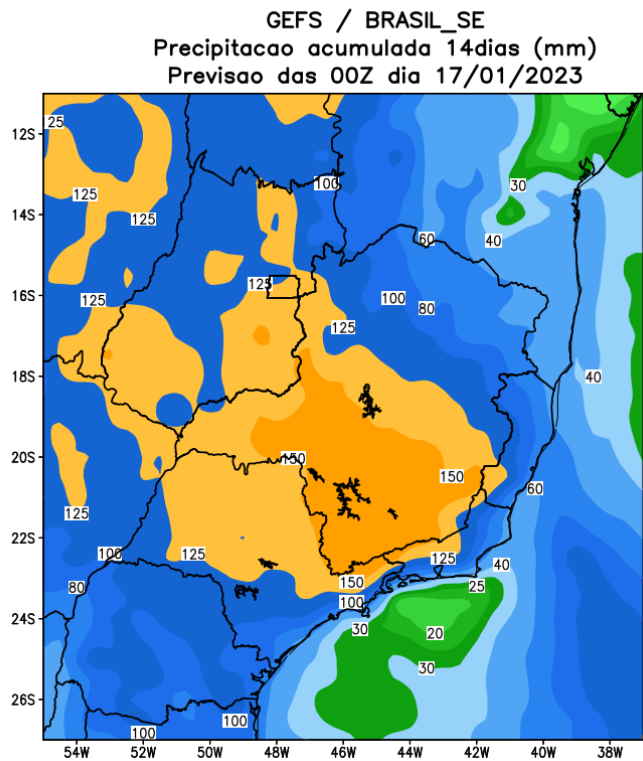
GEFS / BRASIL\_SE  
Precipitacao acumulada 2aSem (mm)  
Previsao das 00Z dia 17/01/2023



Anomalia de Precipitacao BR\_SE (mm)  
Periodo: 2023012500 a 2023013100



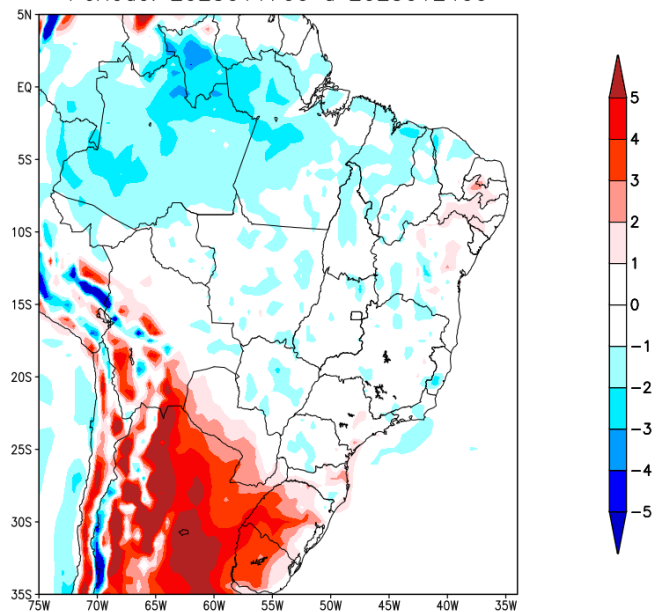
# Tendência para as próximas duas semanas



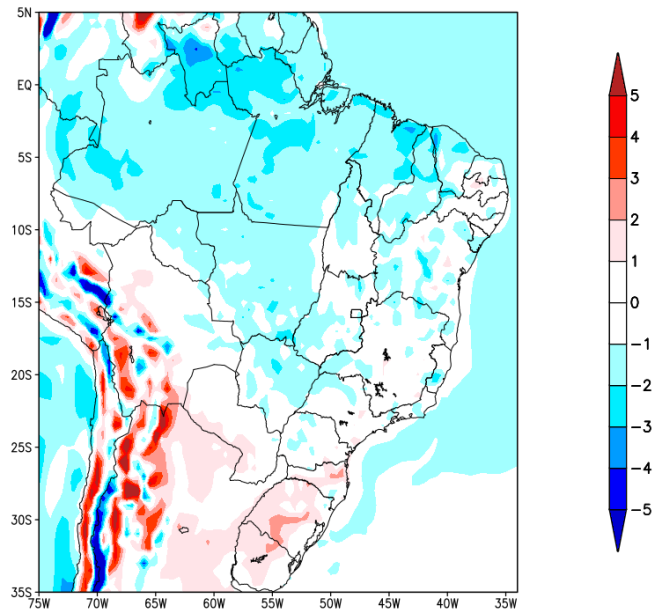


# Previsão de Temperatura para as próximas duas semanas

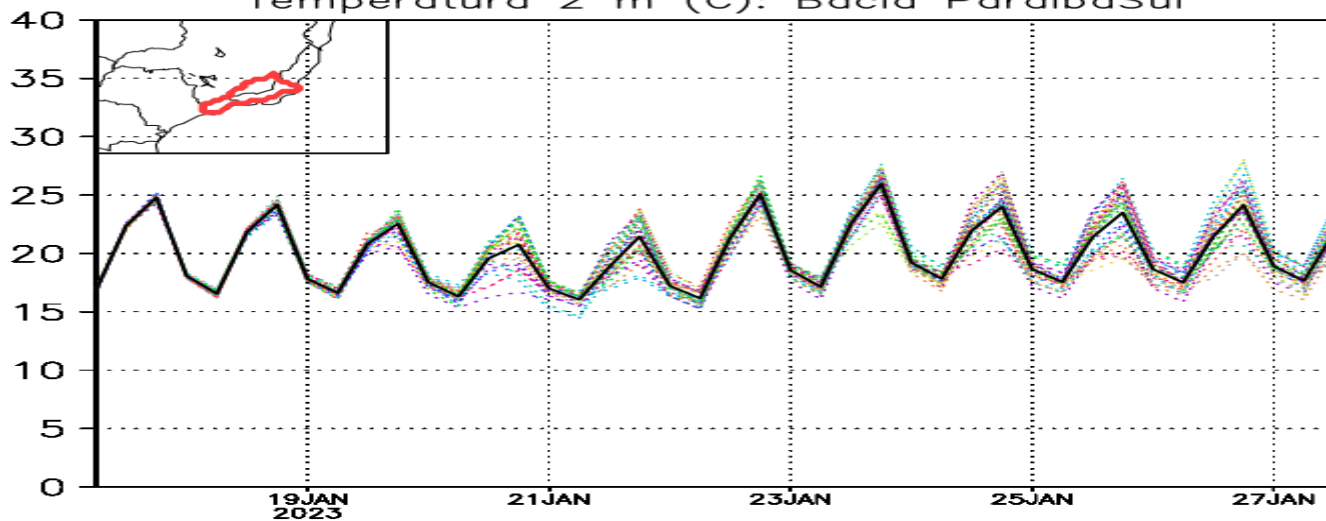
Anomalia de Temperatura BR (C)  
Período: 2023011700 a 2023012400



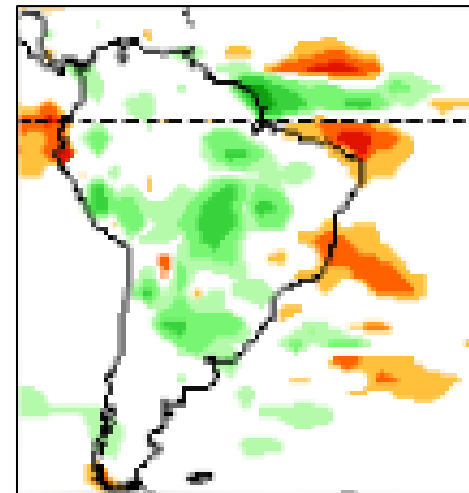
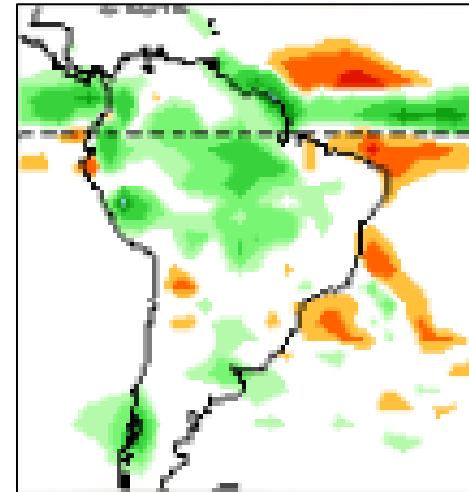
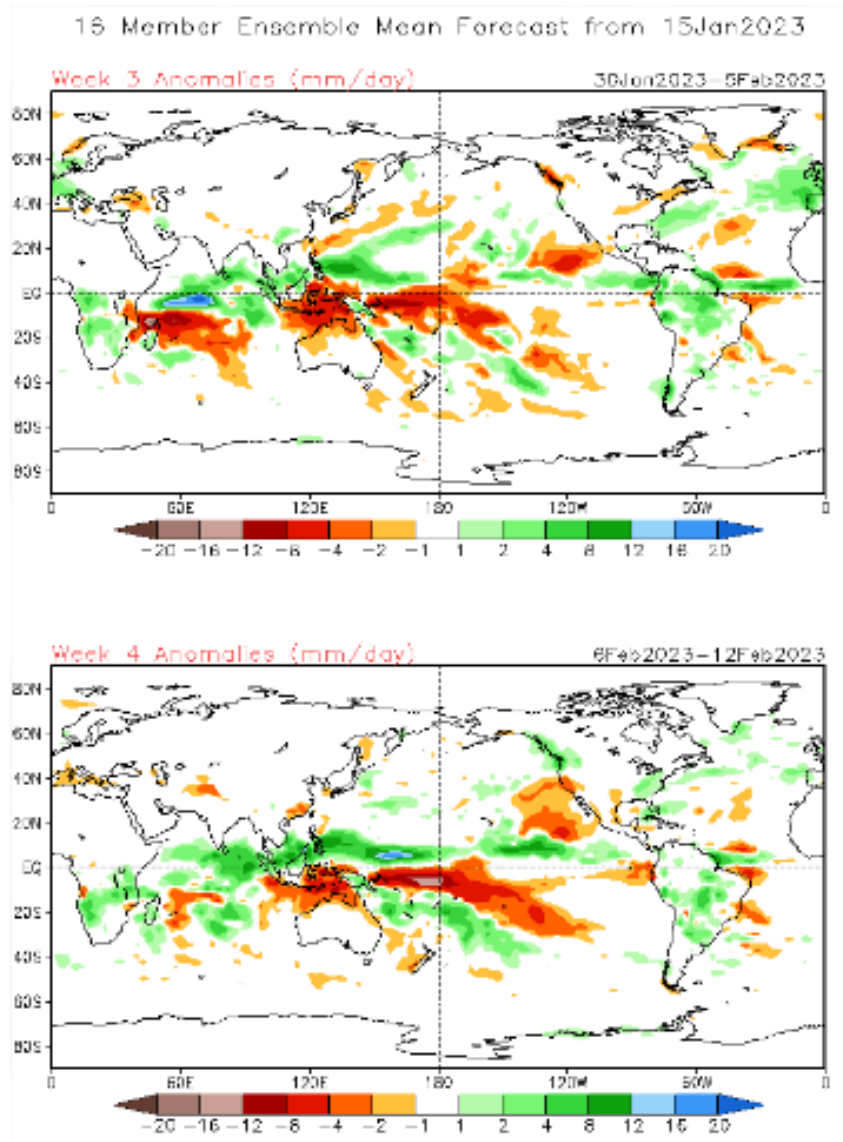
Anomalia de Temperatura BR (C)  
Período: 2023012500 a 2023013100



Temperatura 2 m (C): Bacia ParaíbaSul

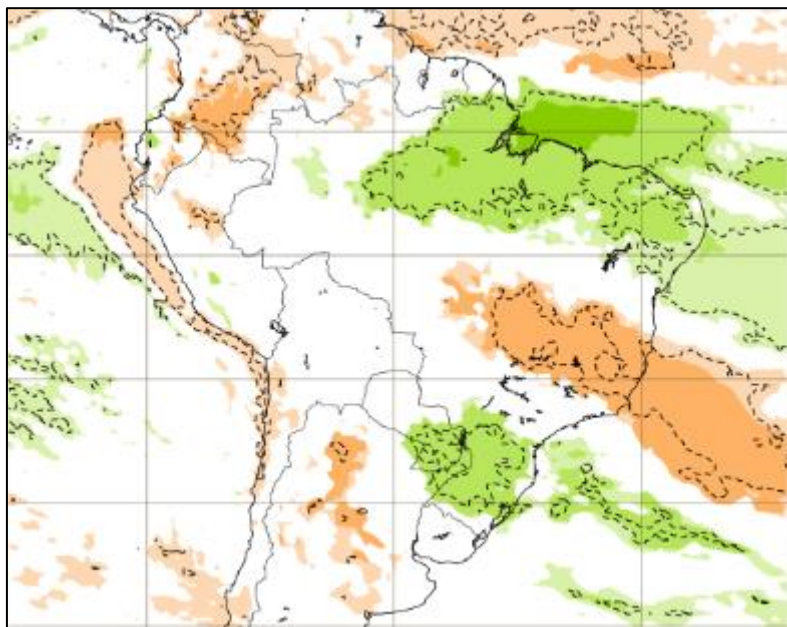


# Tendência 3a e 4a semanas



# Tendência para 3ª e 4ª semanas

30/01-06/02



06-13/02

