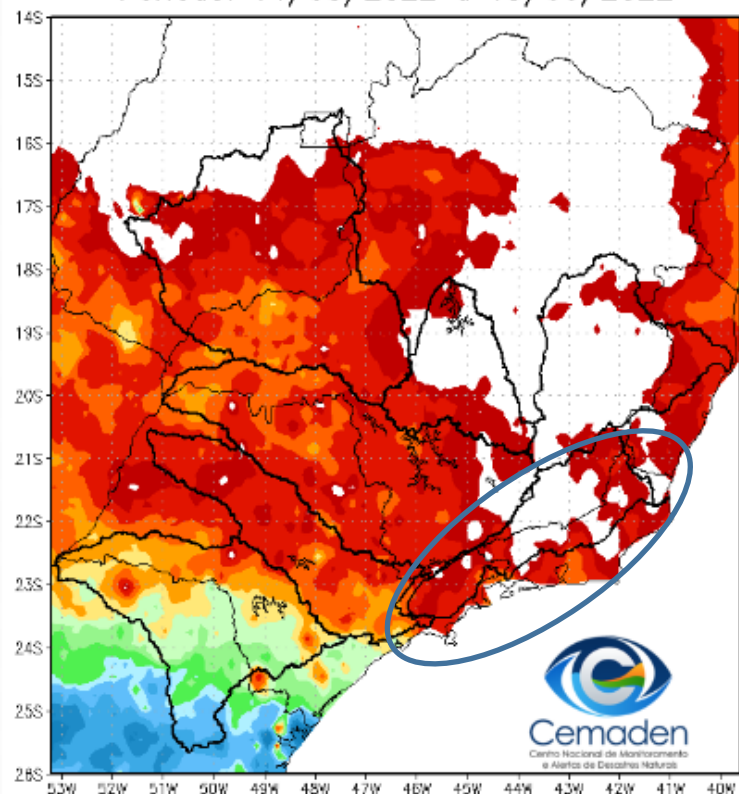


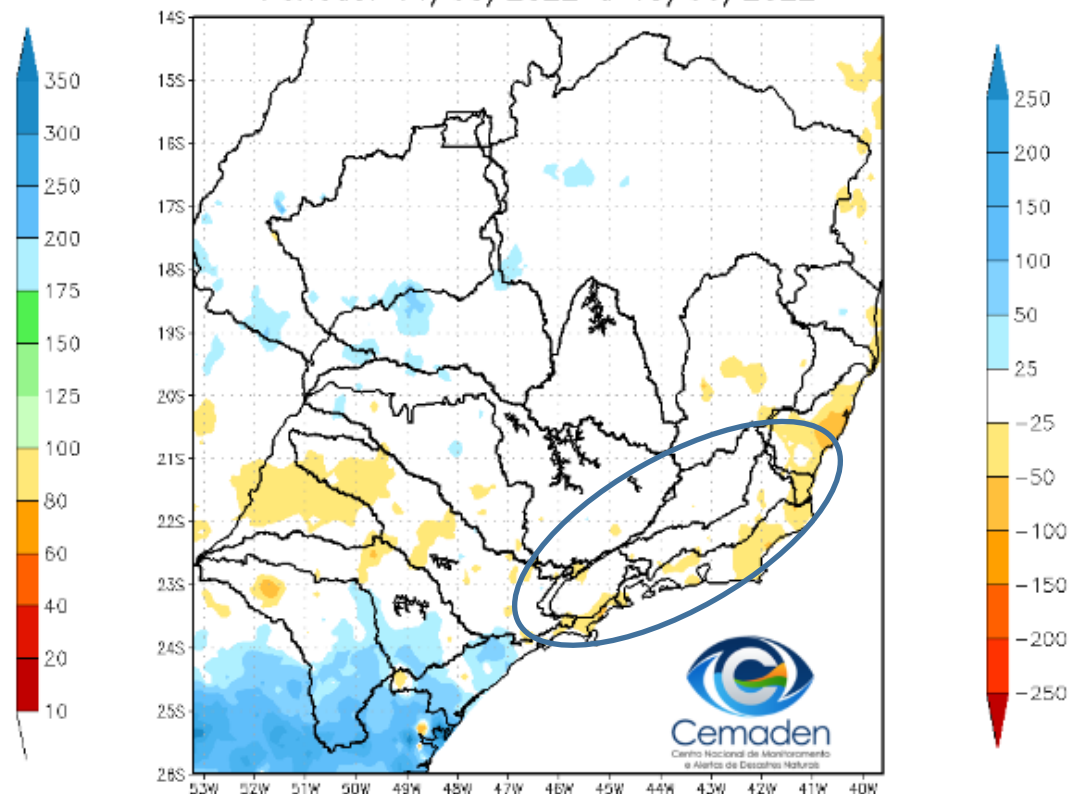
Monitoramento e Previsões de Chuva para a Bacia do Rio Paraíba do Sul

Precipitação acumulada nos últimos 30 dias

Precipitação Acumulada (mm) A.S.
Período: 14/05/2022 a 13/06/2022



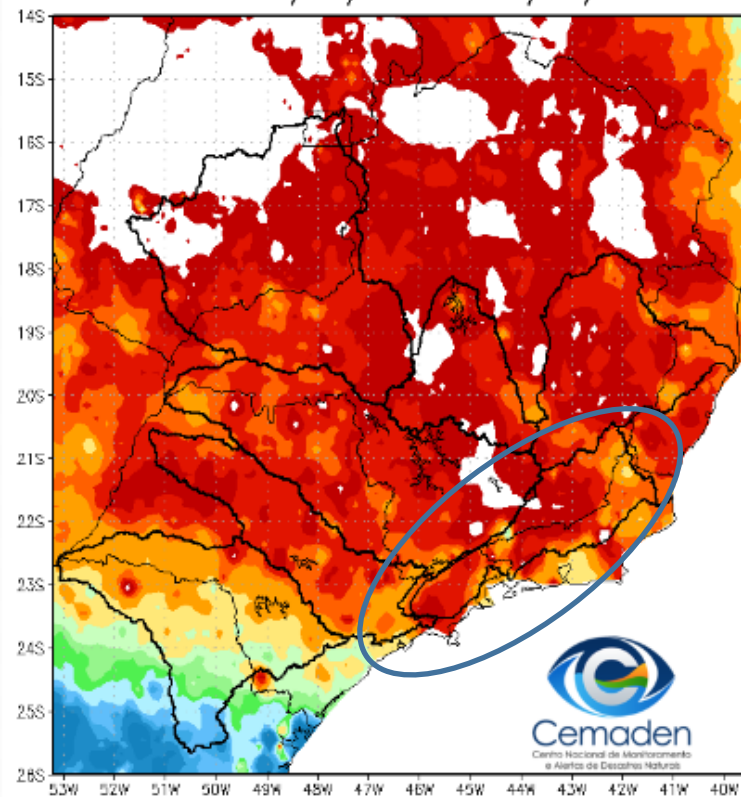
Anomalia de Precipitação (mm) A.S.
Período: 14/05/2022 a 13/06/2022



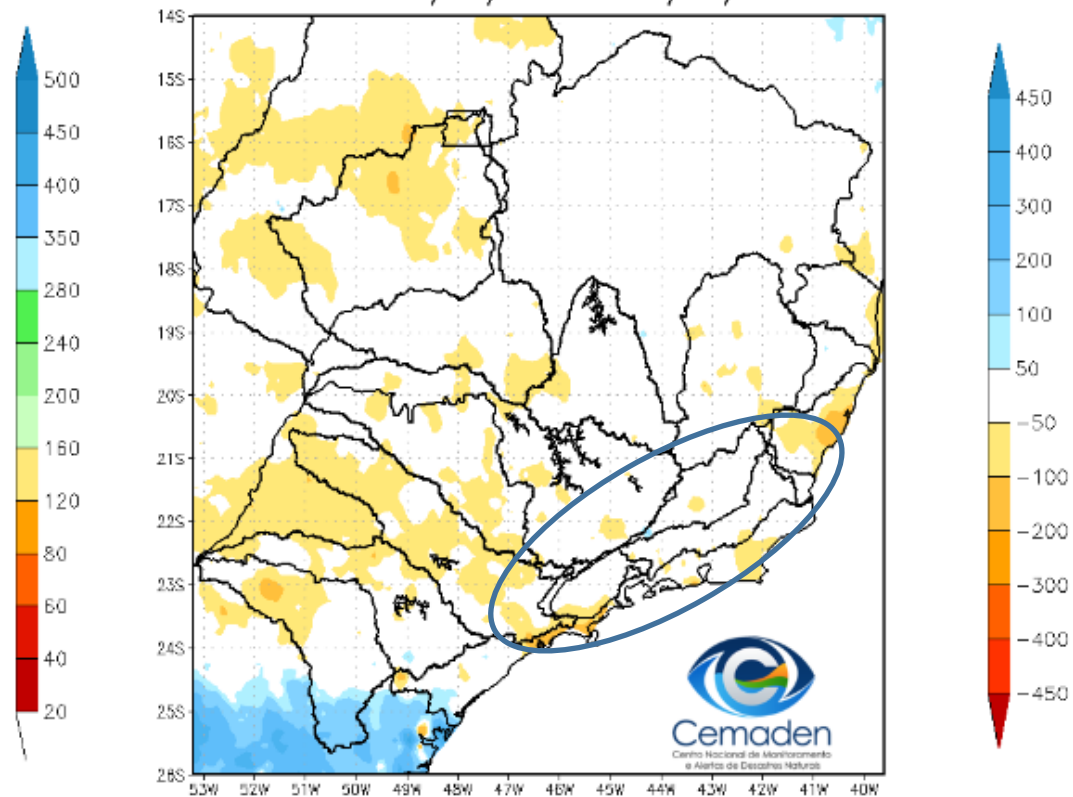
FONTE DOS DADOS INPE

Precipitação acumulada nos últimos 60 dias

Precipitação Acumulada (mm) A.S.
Período: 14/04/2022 a 13/06/2022

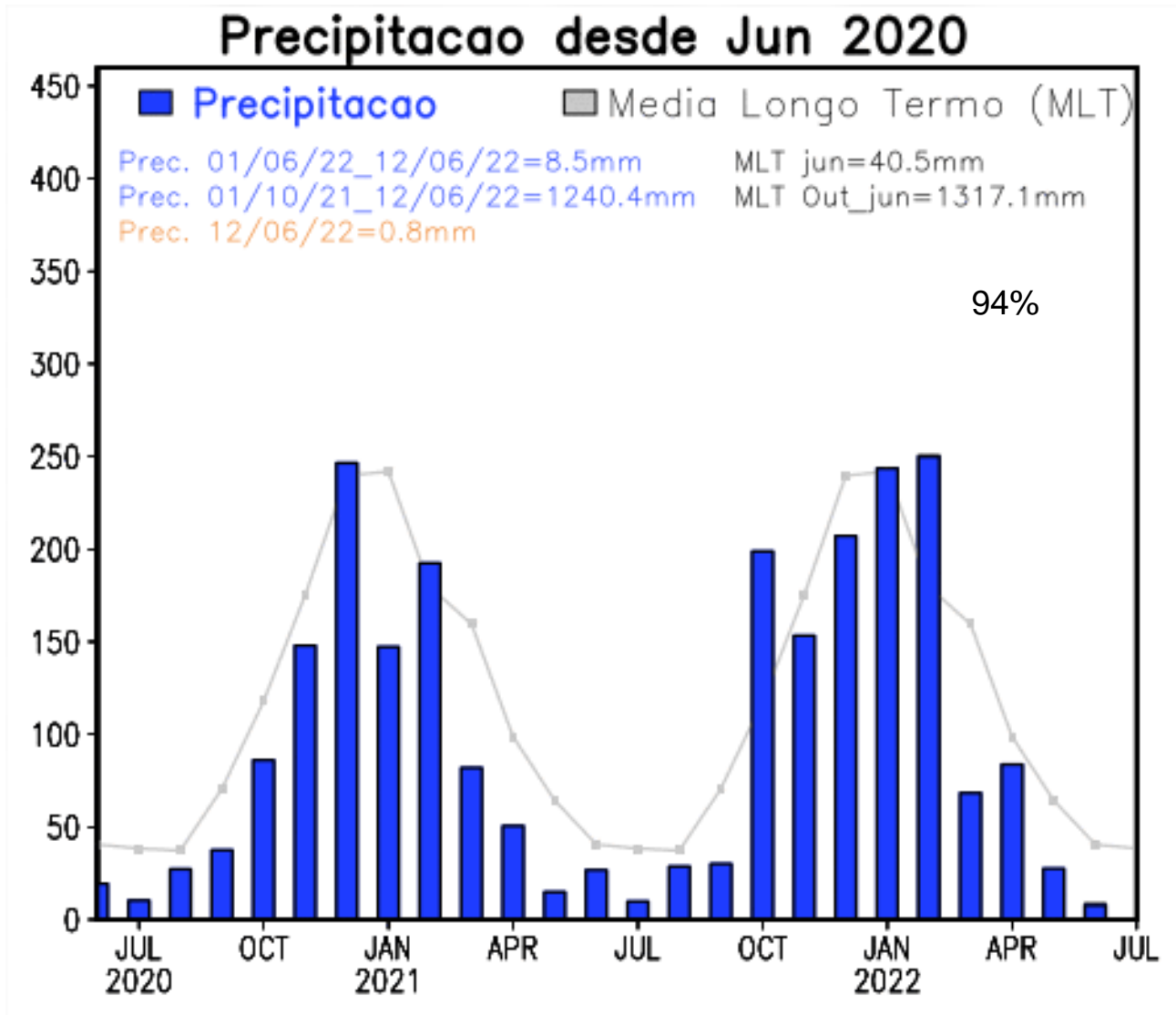


Anomalia de Precipitação (mm) A.S.
Período: 14/04/2022 a 13/06/2022

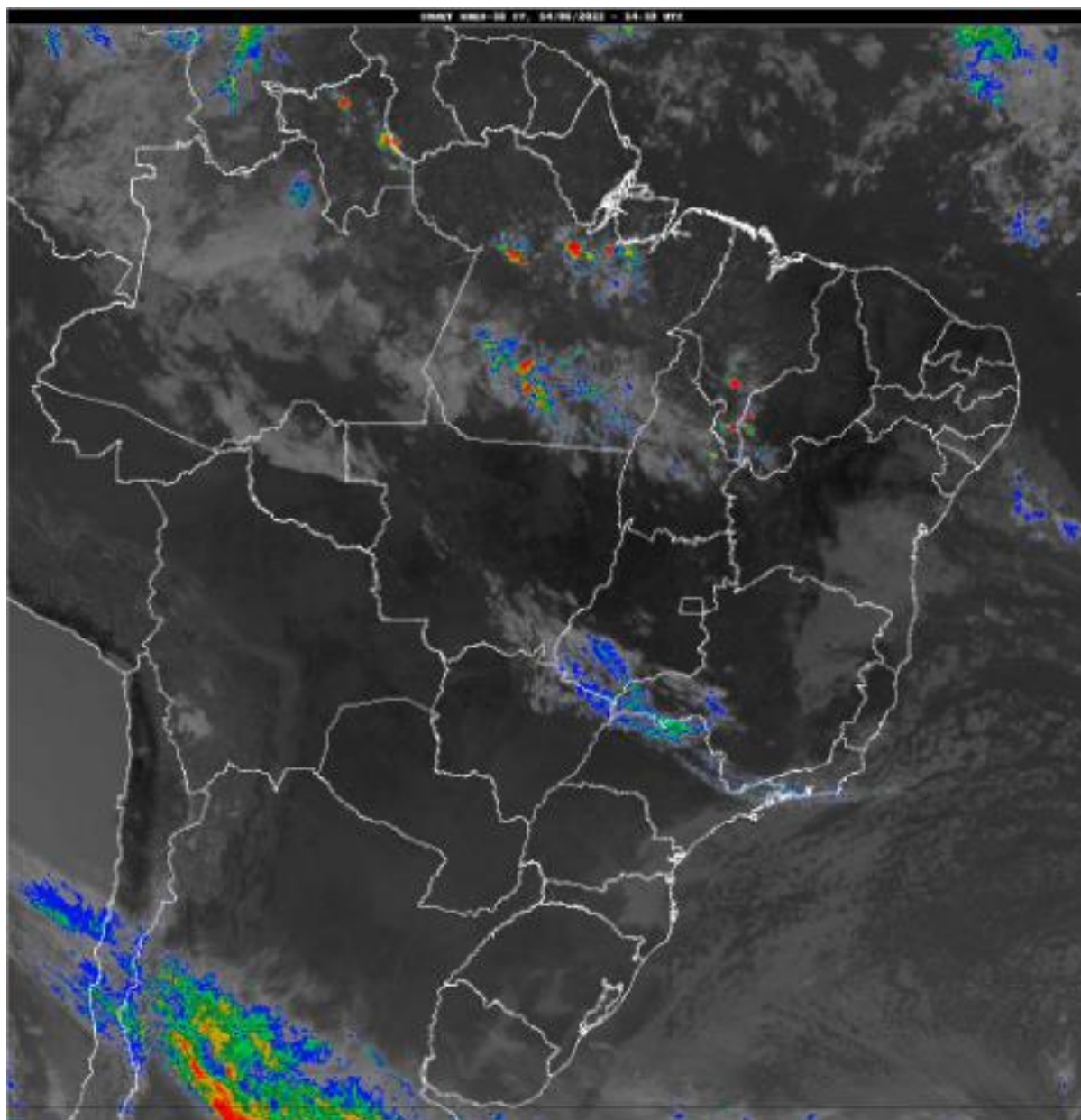


FONTE DOS DADOS INPE

Precipitação nos últimos 2 anos



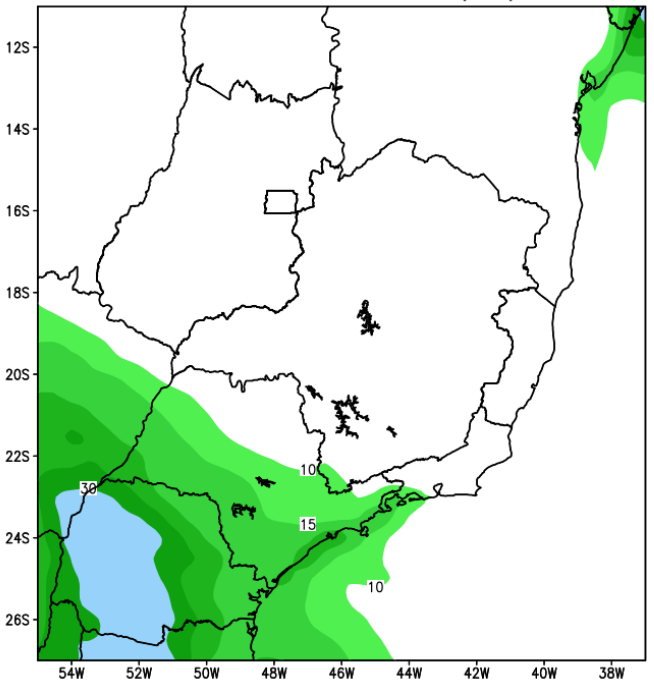
Situação meteorológica atual



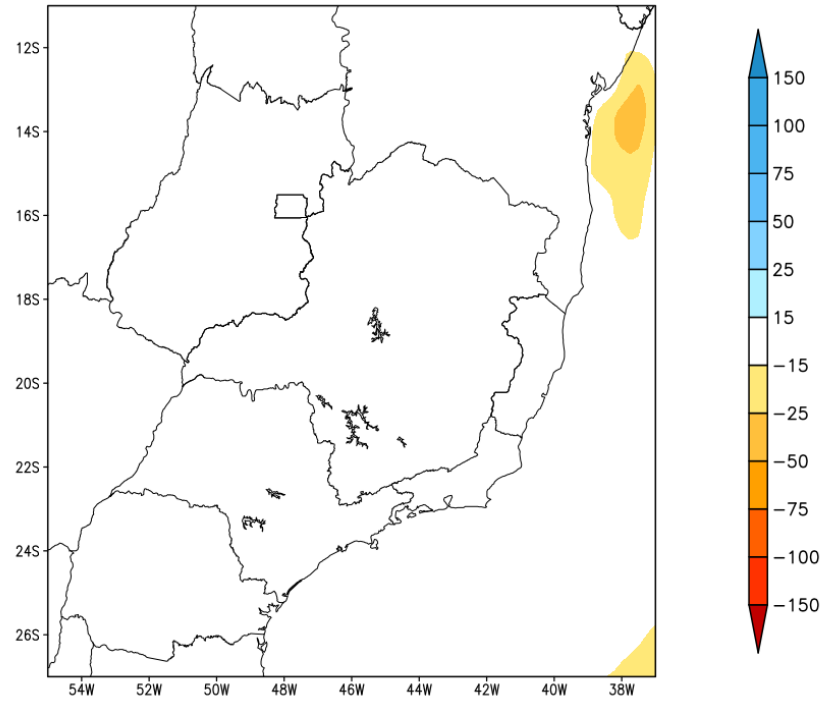
Fonte: INMET

Previsão de chuva para os próximos 7 dias

GEFS / BRASIL_SE
Precipitacao acumulada 1aSem (mm)
Previsao das 00Z dia 14/06/2022

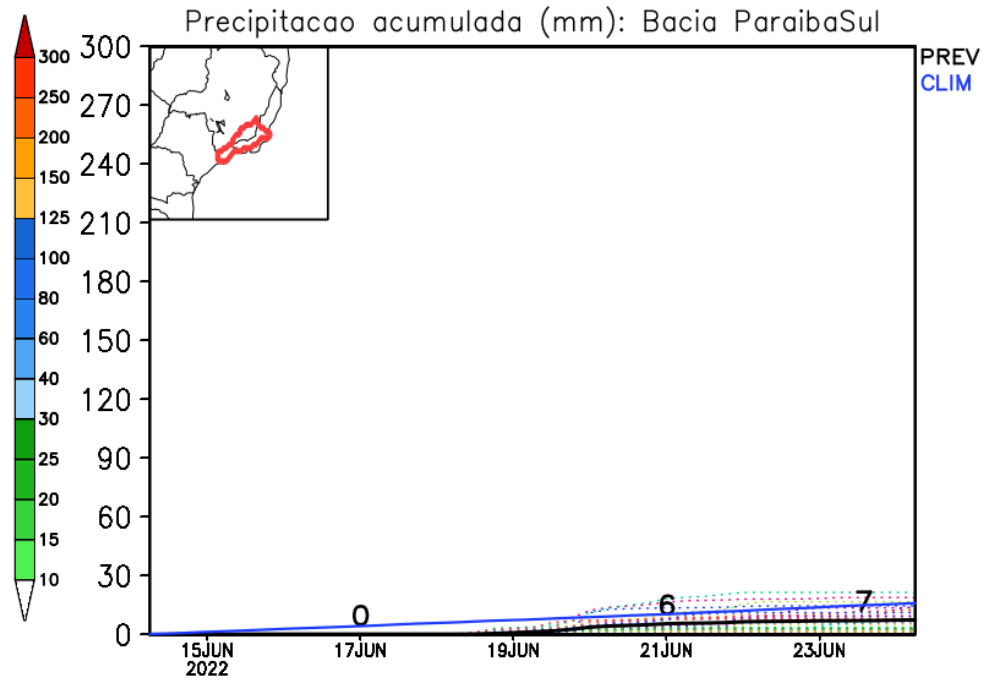
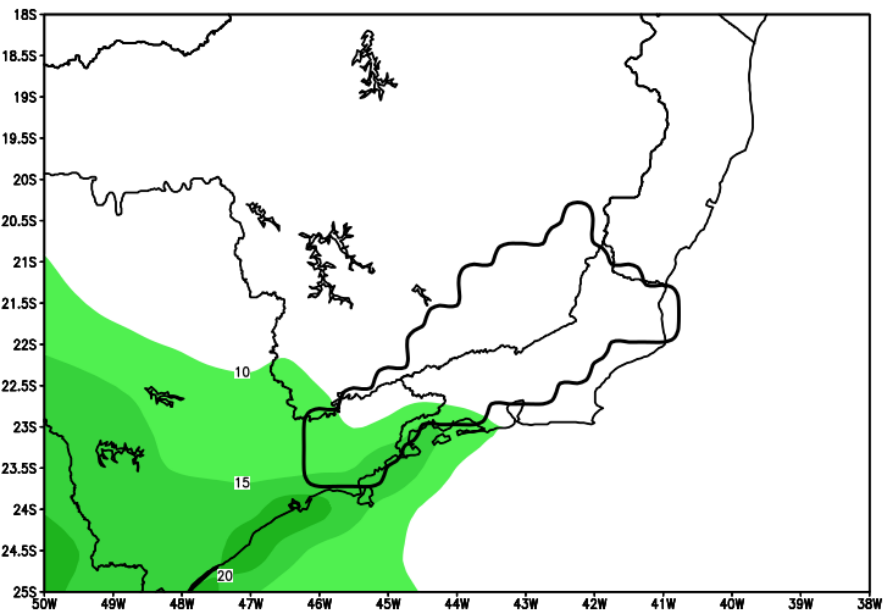


Anomalia de Precipitacao BR SE (mm)
Periodo: 2022061400 a 2022062100



Rio Paraíba do Sul

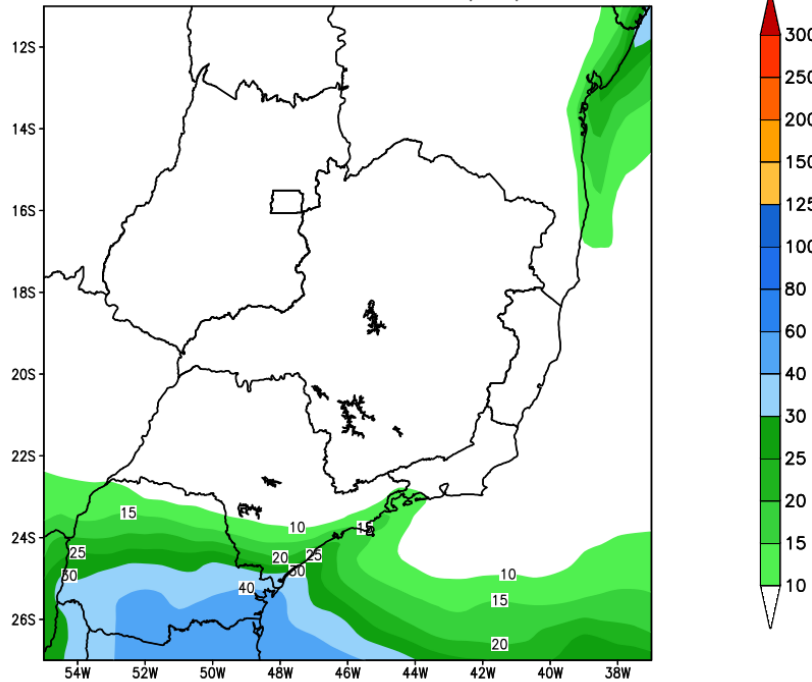
GEFS / Bacia do Rio Paraíba do Sul
Precipitacao acumulada em 7 dias (mm)
Previsao das 00Z dia 14/06/2022



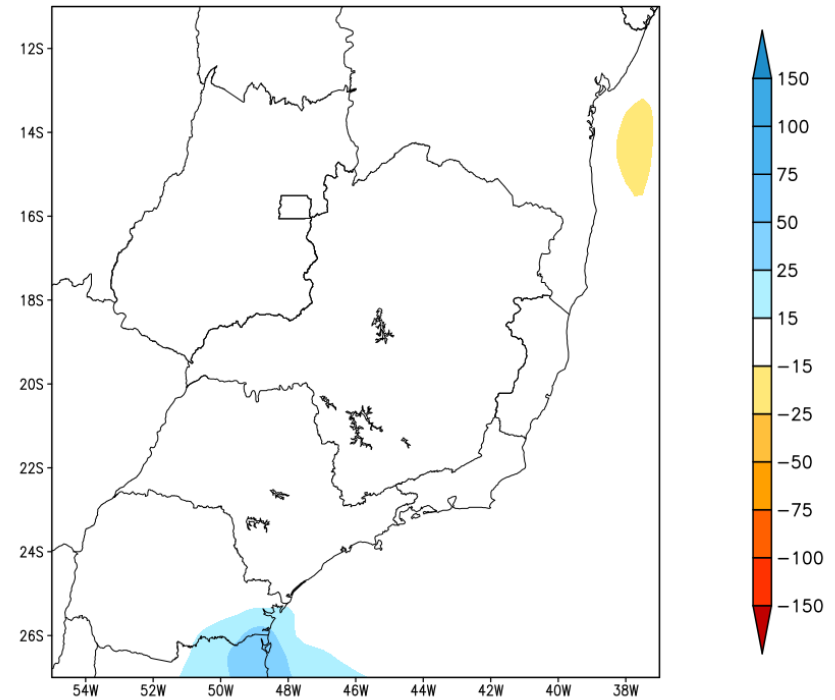
Modelo GFS/NOAA

Tendência para a 2a semana

GEFS / BRASIL_SE
Precipitacao acumulada 2aSem (mm)
Previsao das 00Z dia 14/06/2022

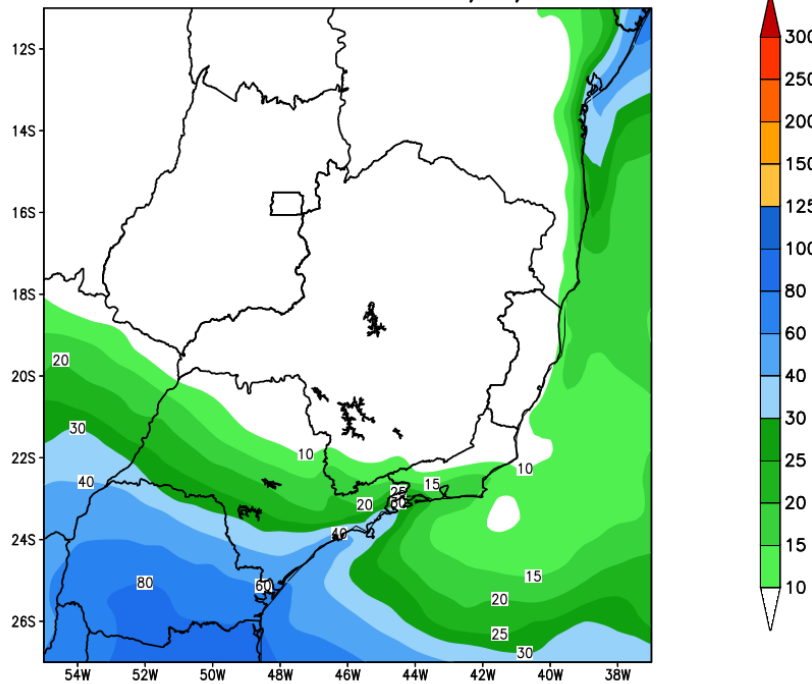


Anomalia de Precipitacao BR_SE (mm)
Periodo: 2022062200 a 2022062800

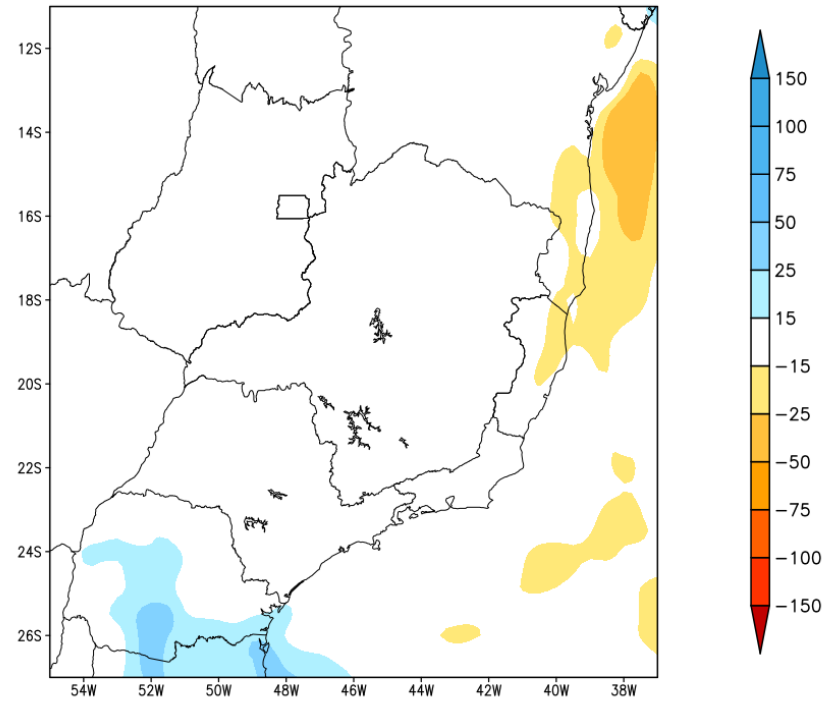


Tendência para as próximas duas semanas

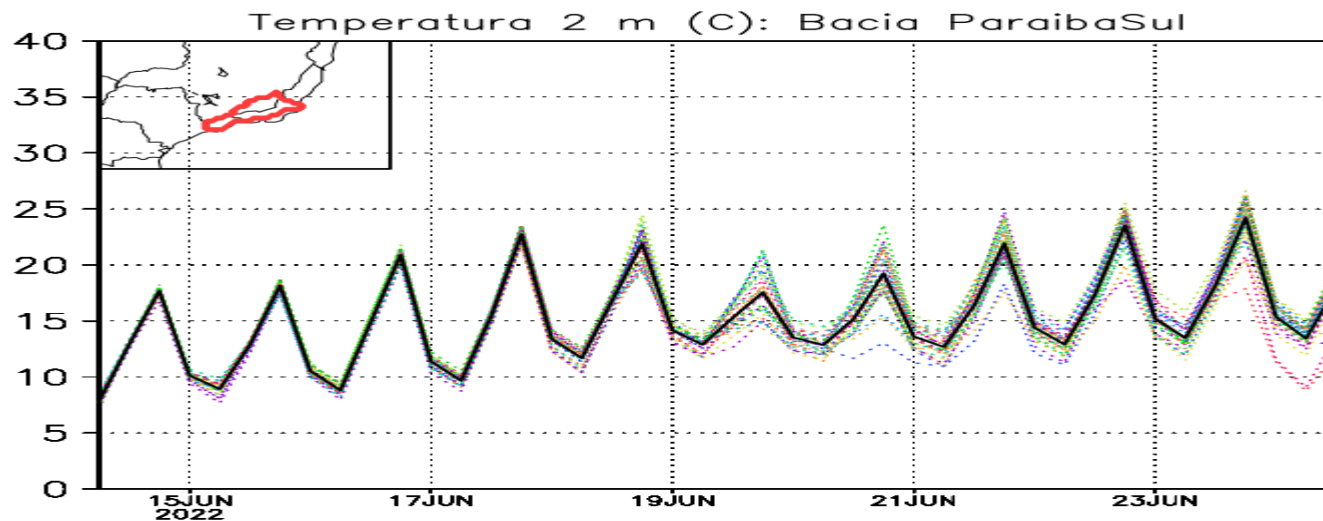
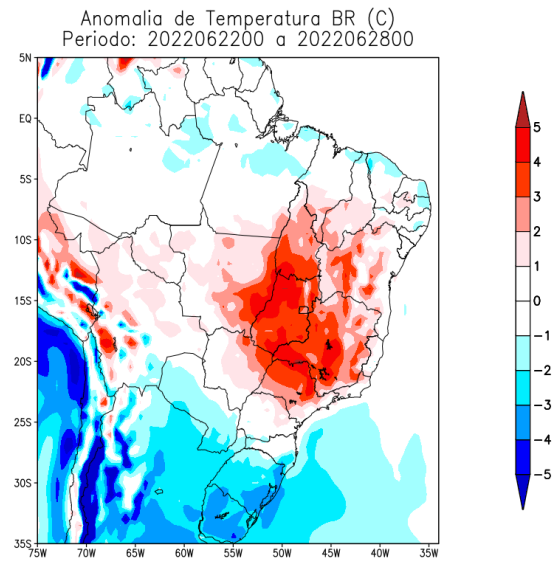
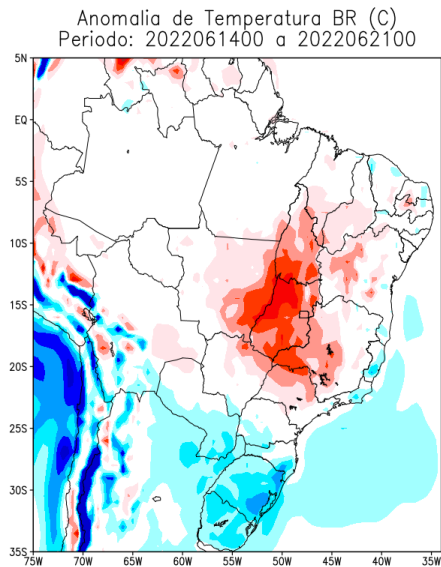
GEFS / BRASIL_SE
Precipitacao acumulada 14dias (mm)
Previsao das 00Z dia 14/06/2022



Anomalia de Precipitacao BR_SE (mm)
Periodo: 2022061400 a 2022062800

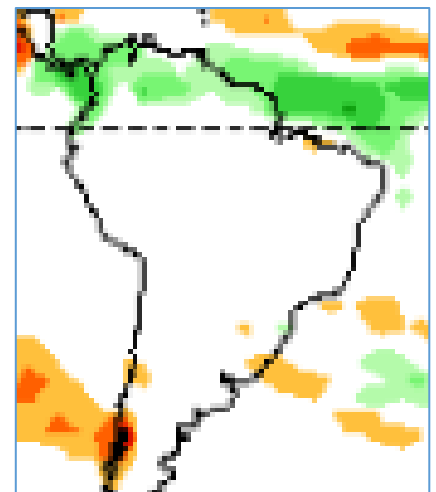
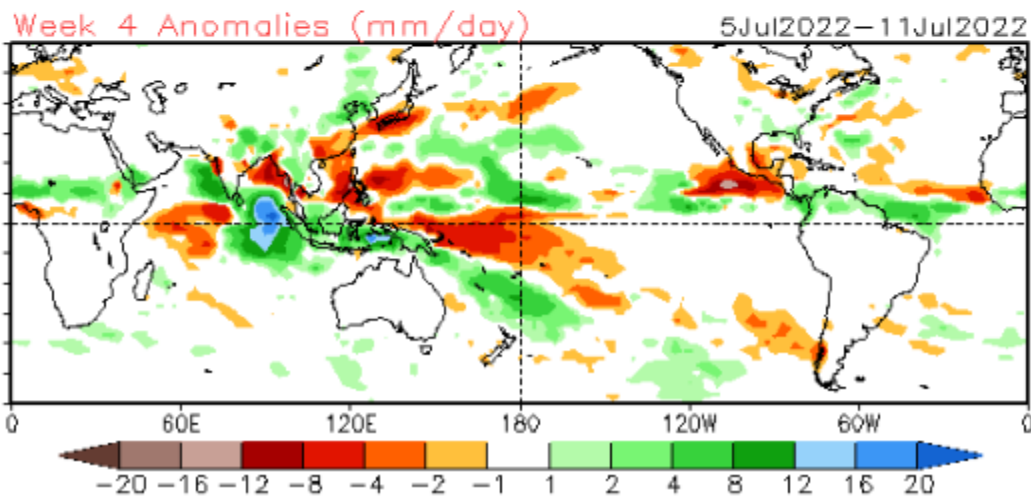
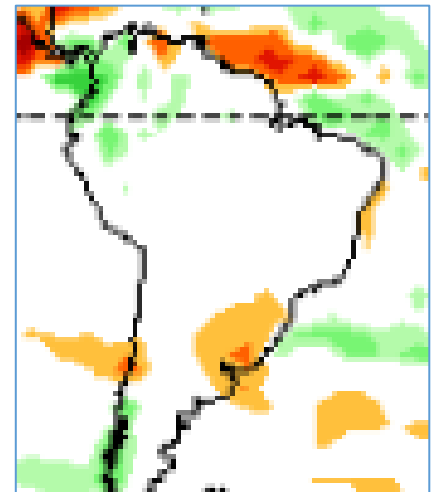
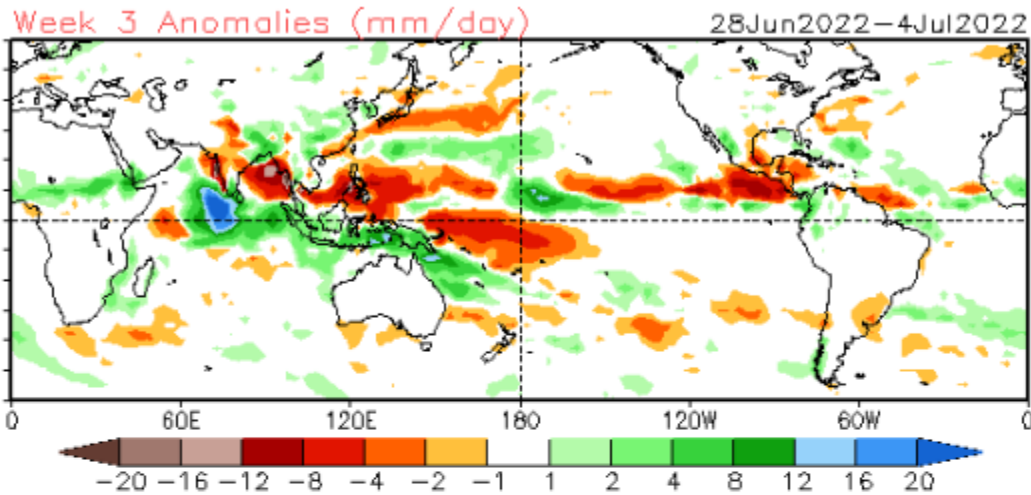


Previsão de Temperatura para as próximas duas semanas



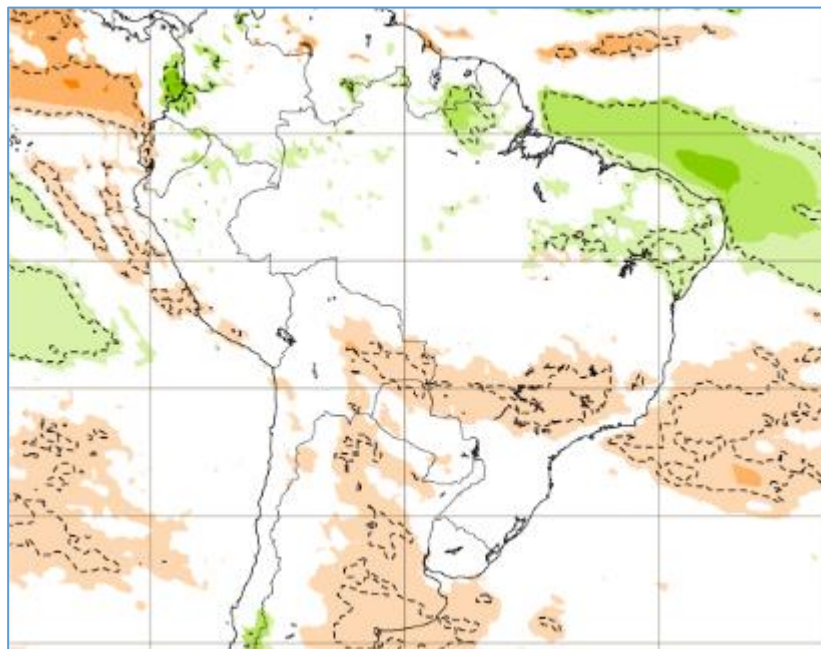
Tendência 3a e 4a semanas

16 Member Ensemble Mean Forecast from 13Jun2022



Tendência para 3ª e 4ª semanas

27/06-04/07



04-11/07

