

Monitoramento e Previsões de Chuva para a Bacia do Rio Paraíba do Sul

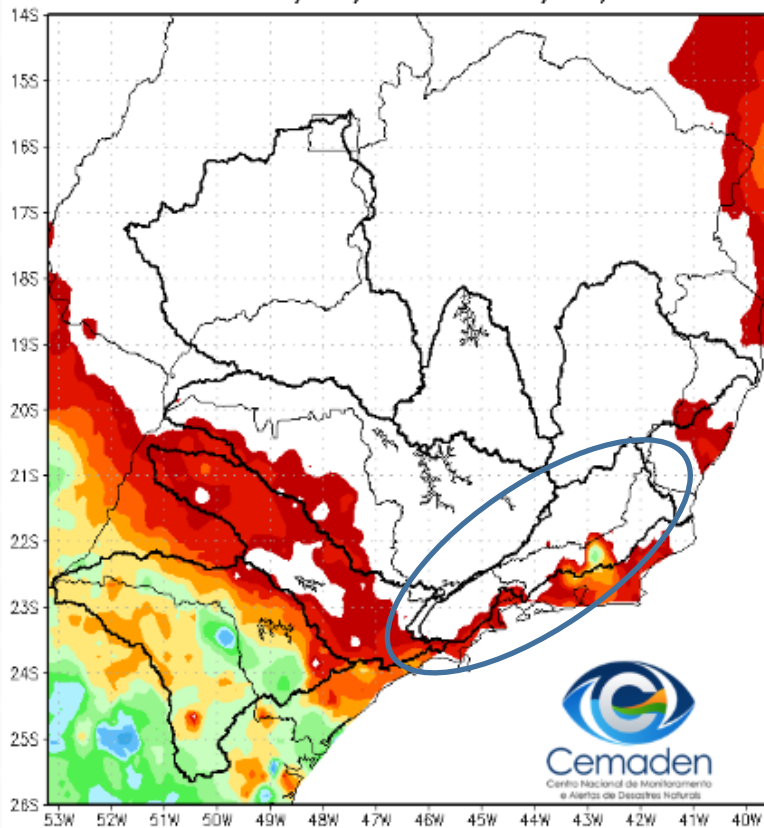


Cemaden
Centro Nacional de Monitoramento
e Alertas de Desastres Naturais

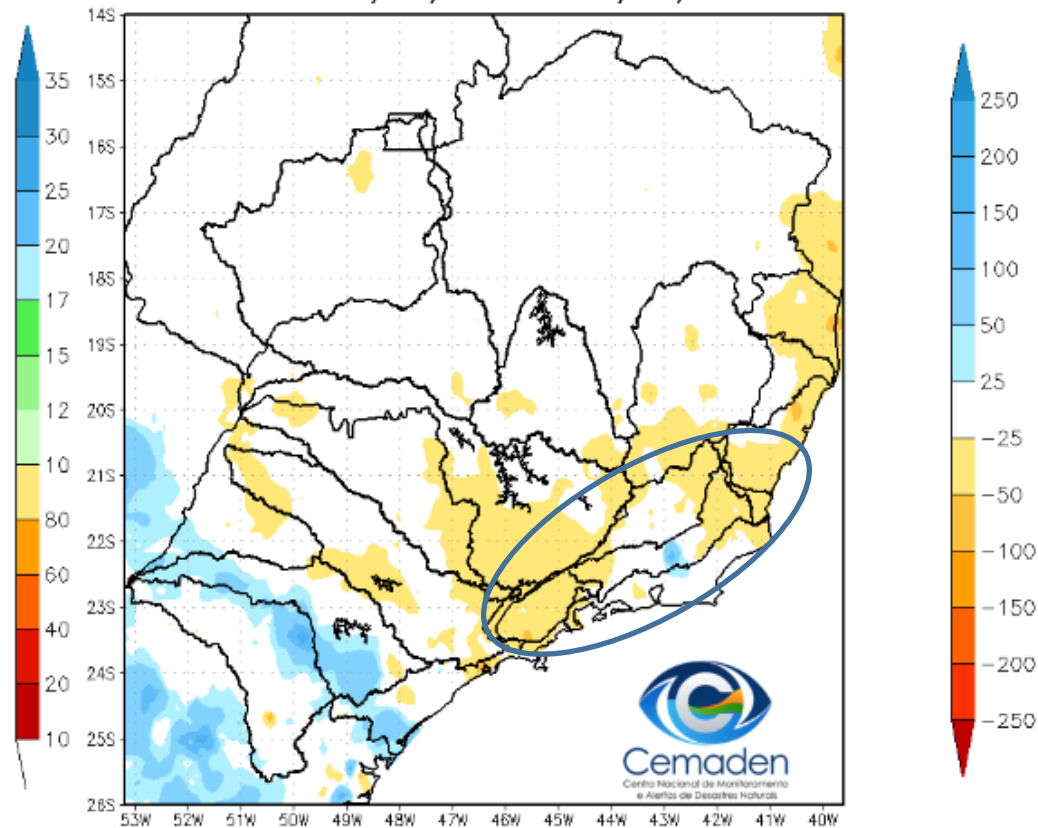
13 de setembro de 2022

Precipitação acumulada nos últimos 30 dias

Precipitação Acumulada (mm) A.S.
Período: 13/08/2022 a 12/09/2022



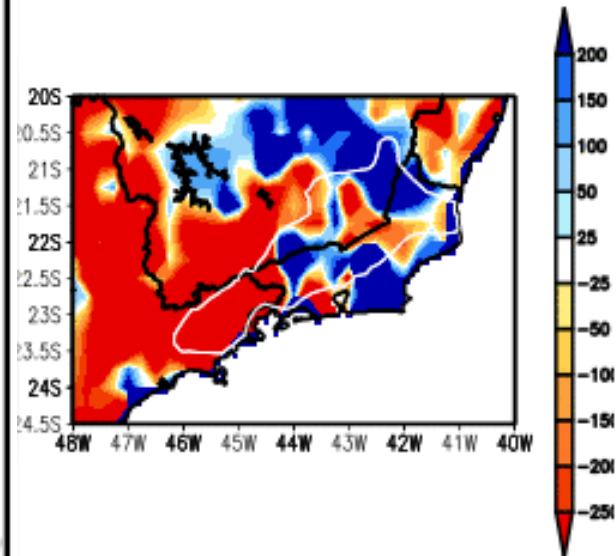
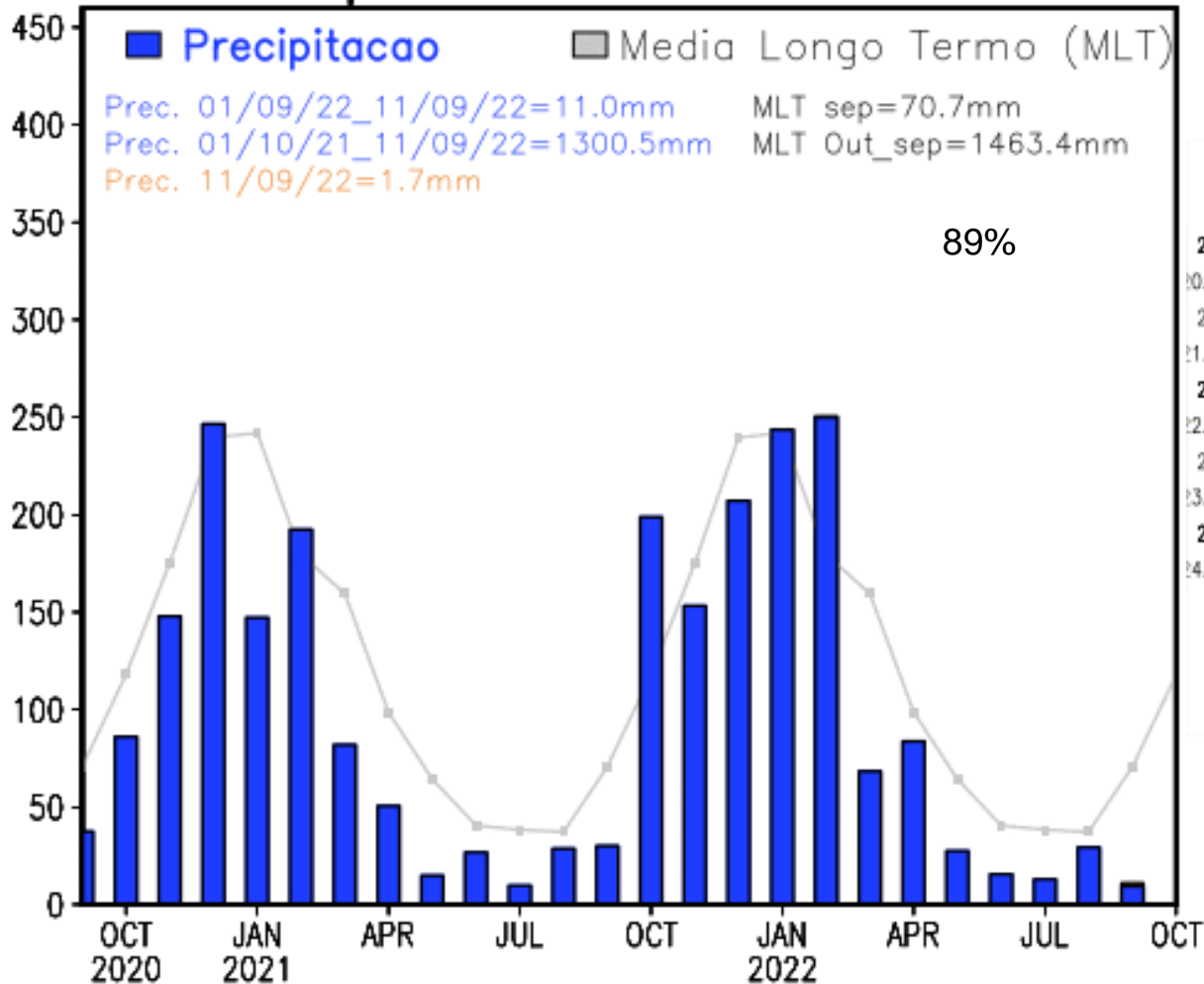
Anomalia de Precipitação (mm) A.S.
Período: 13/08/2022 a 12/09/2022



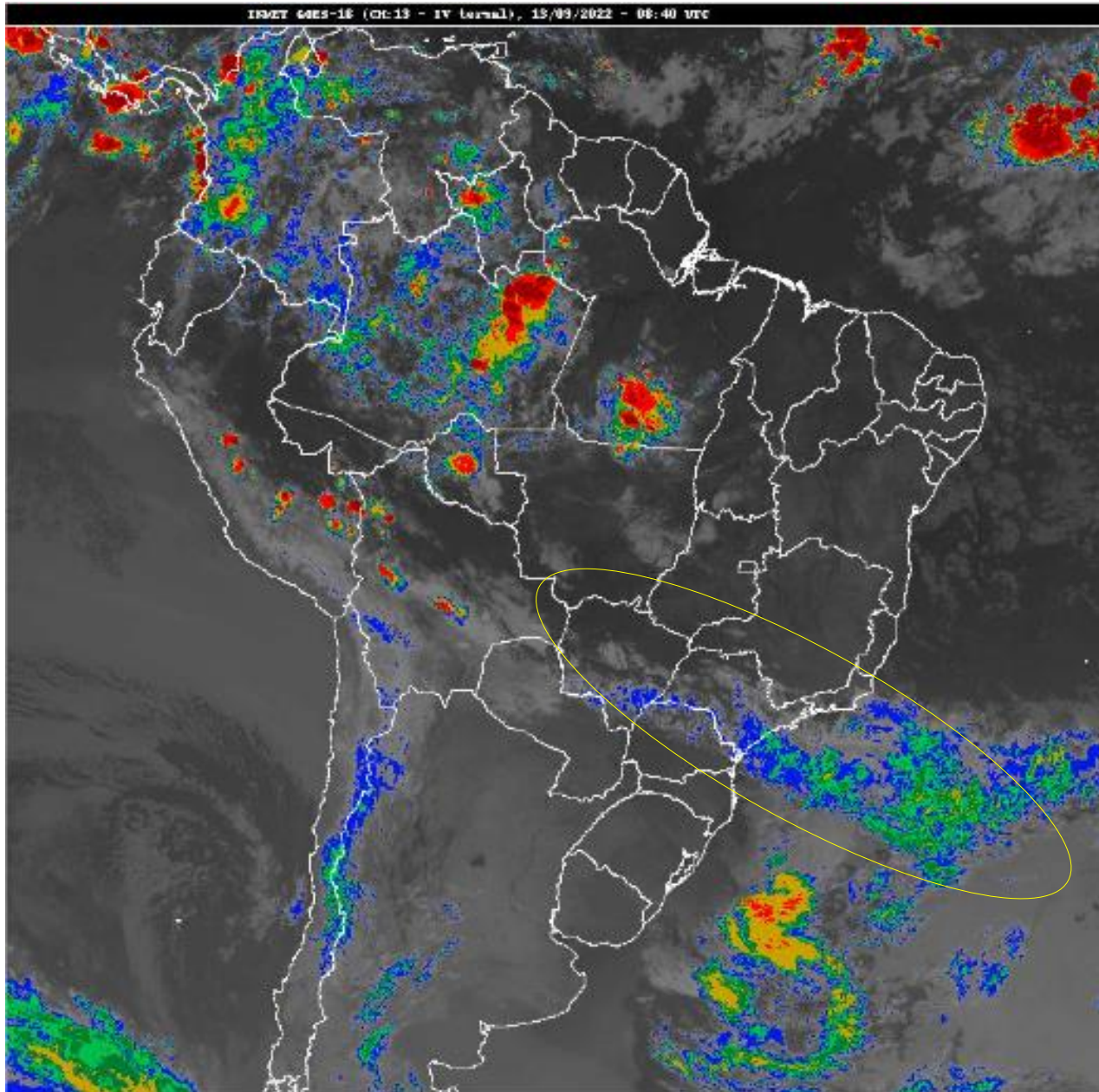
FONTE DOS DADOS INPE

Precipitação nos últimos 2 anos

Precipitação desde Set 2020

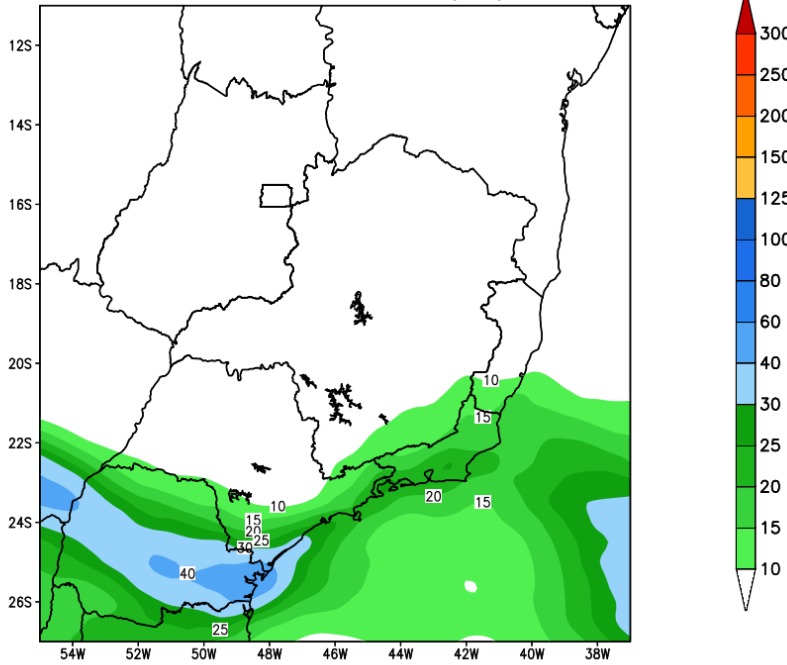


Situação meteorológica atual

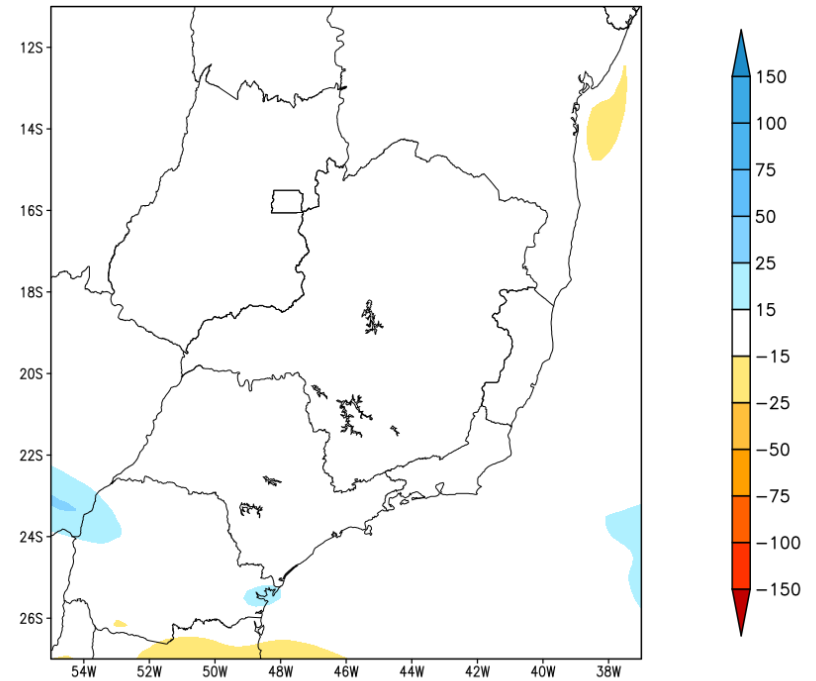


Previsão de chuva para os próximos 7 dias

GEFS / BRASIL_SE
Precipitacao acumulada 1aSem (mm)
Previsao das 00Z dia 13/09/2022

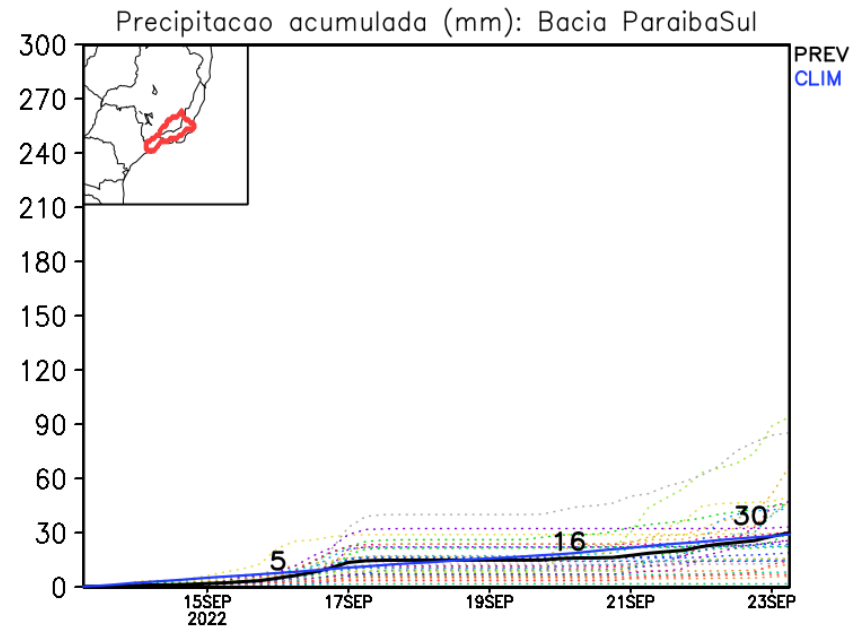
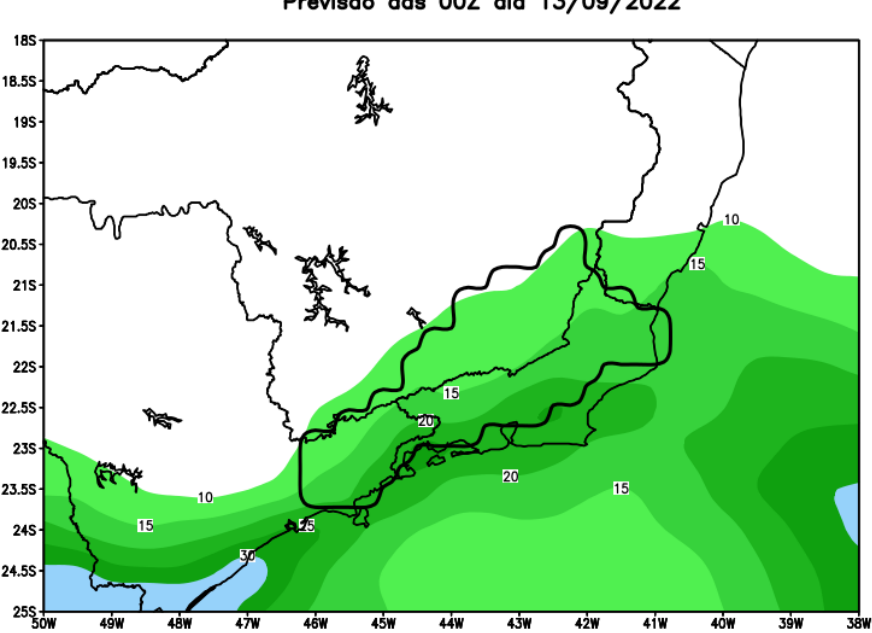


Anomalia de Precipitacao BR SE (mm)
Periodo: 2022091300 a 2022092000



Rio Paraíba do Sul

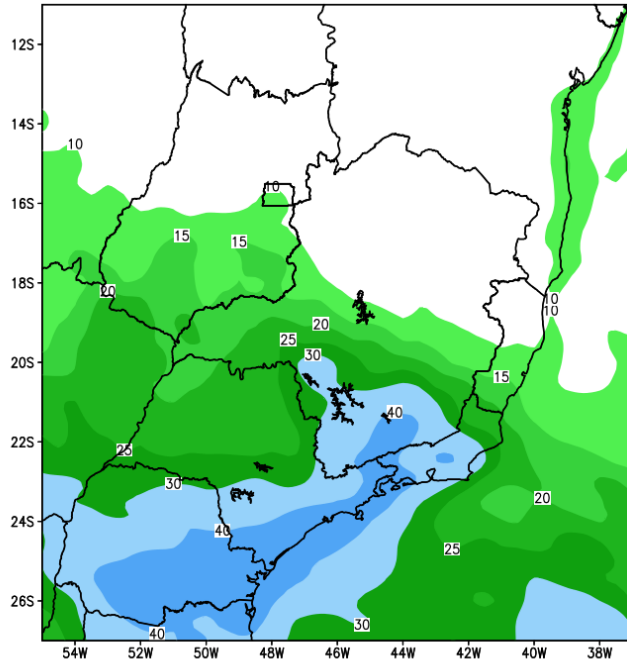
GEFS / Bacia do Rio Paraíba do Sul
Precipitacao acumulada em 7 dias (mm)
Previsao das 00Z dia 13/09/2022



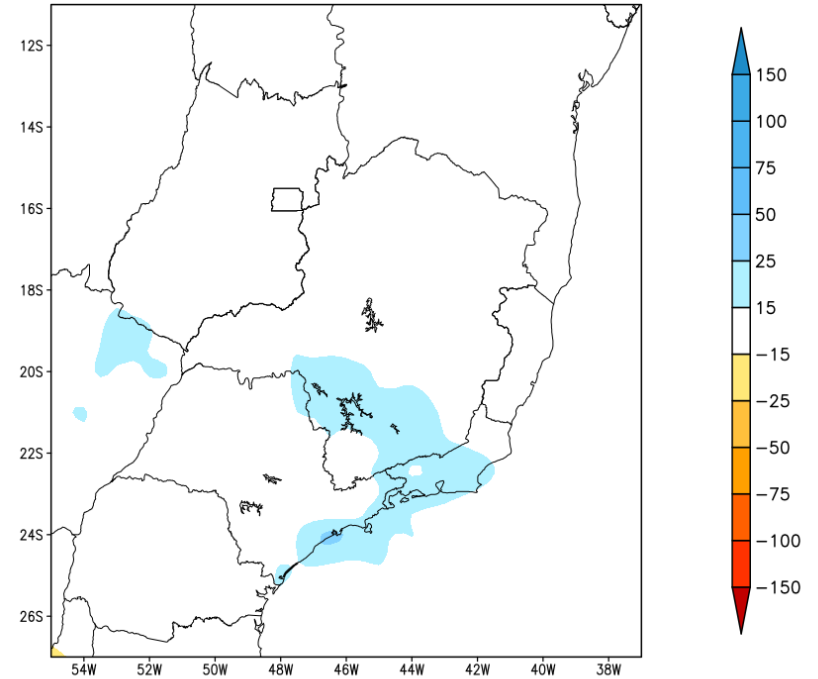
Modelo GFS/NOAA

Tendência para a 2a semana

GEFS / BRASIL_SE
Precipitacao acumulada 2aSem (mm)
Previsao das 00Z dia 13/09/2022

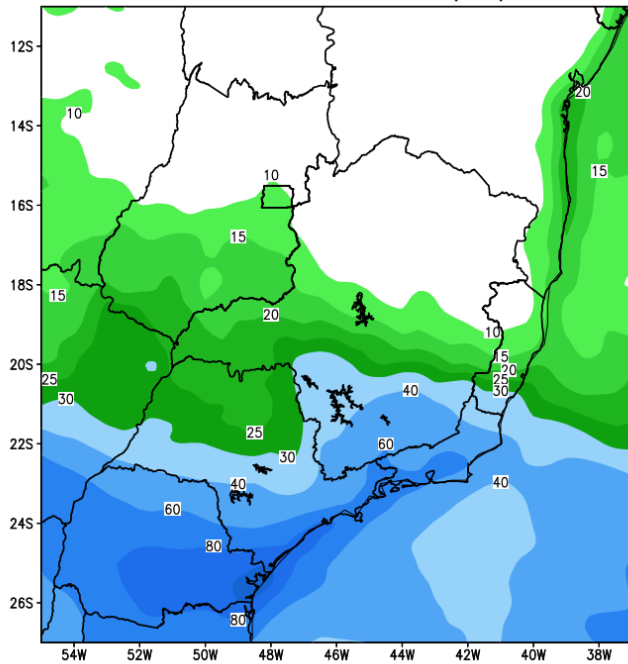


Anomalia de Precipitacao BR SE (mm)
Periodo: 2022092100 a 2022092700

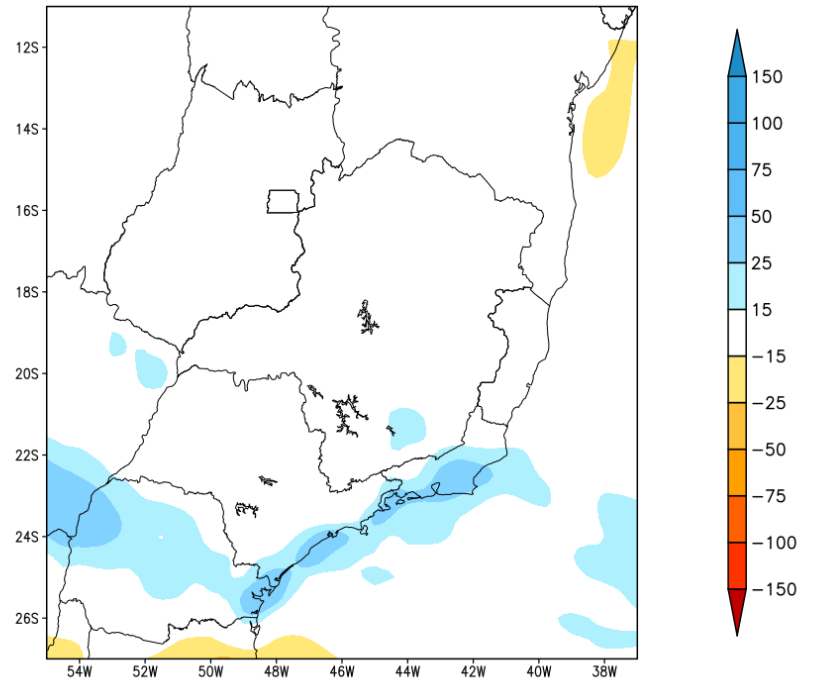


Tendência para as próximas duas semanas

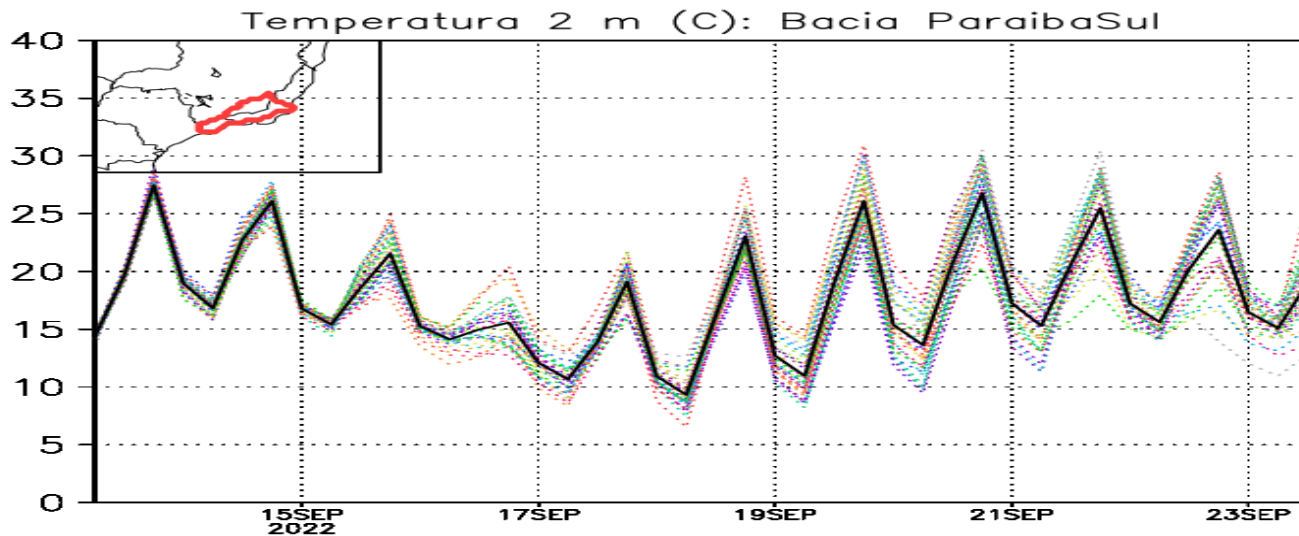
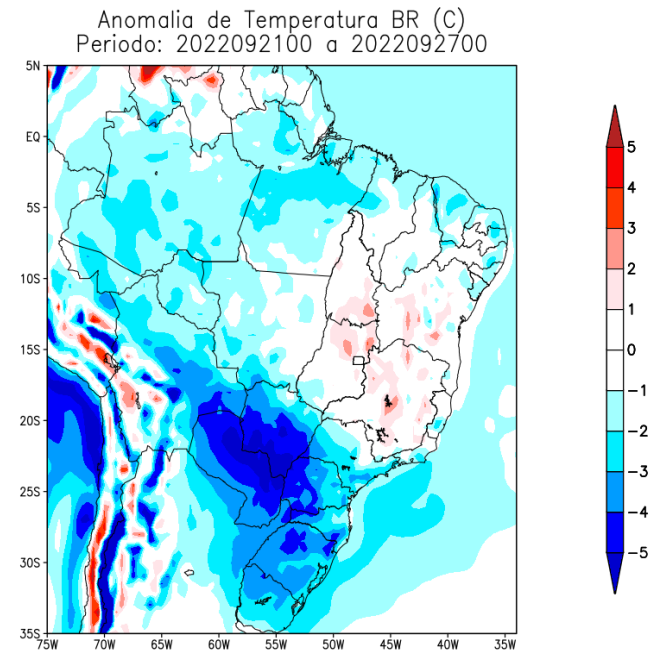
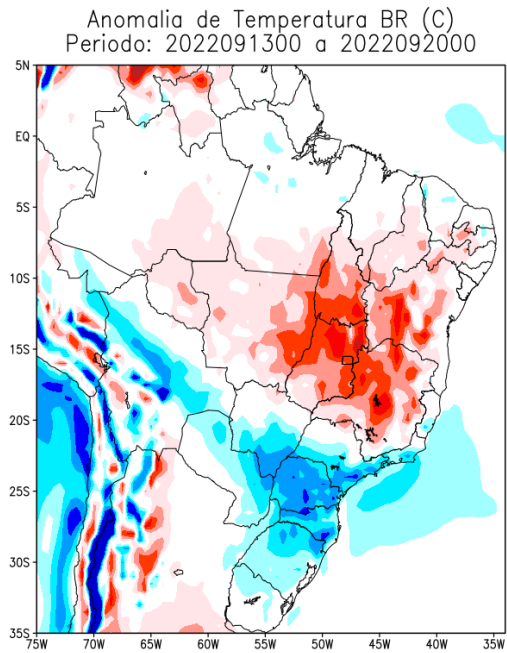
GEFS / BRASIL_SE
Precipitacao acumulada 14dias (mm)
Previsao das 00Z dia 13/09/2022



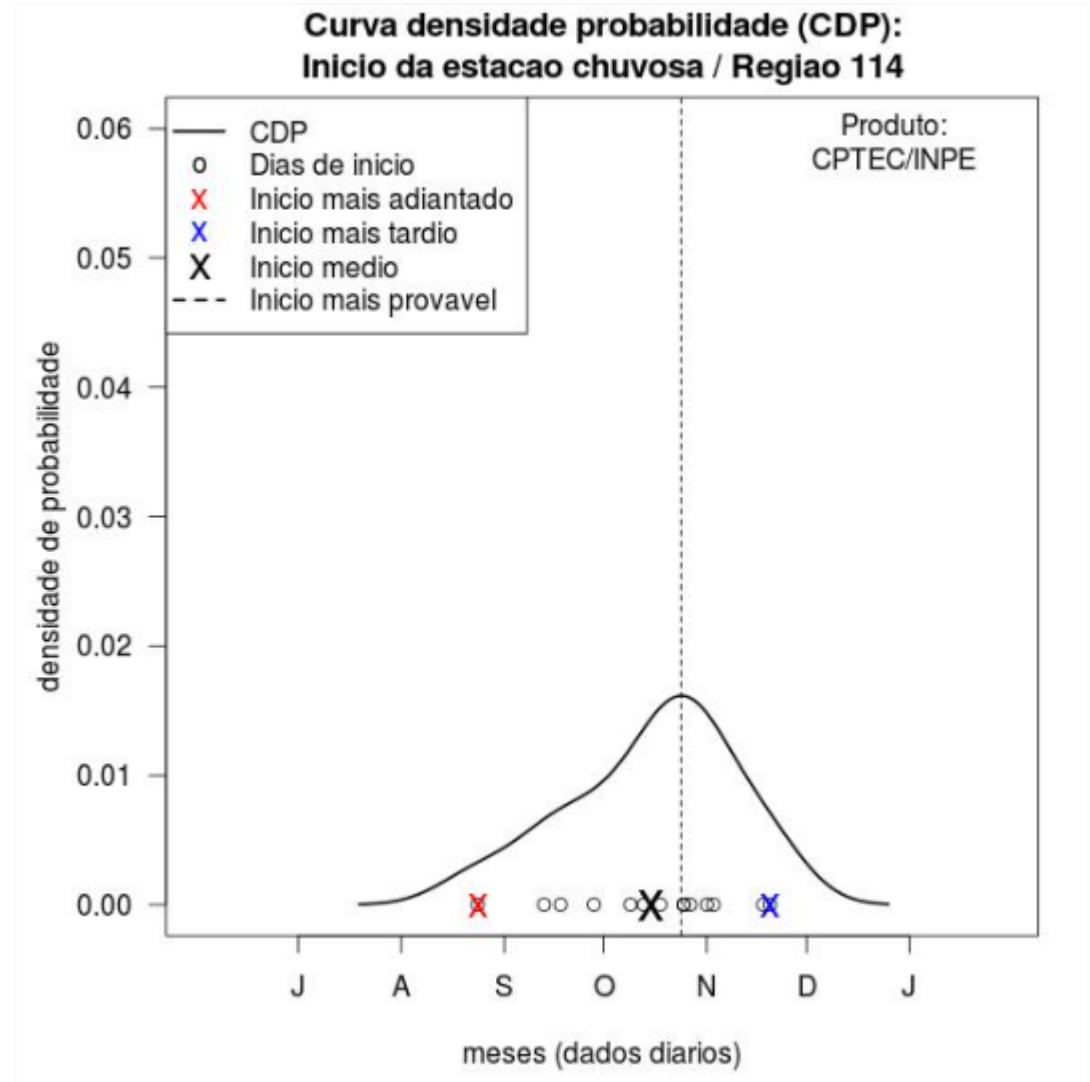
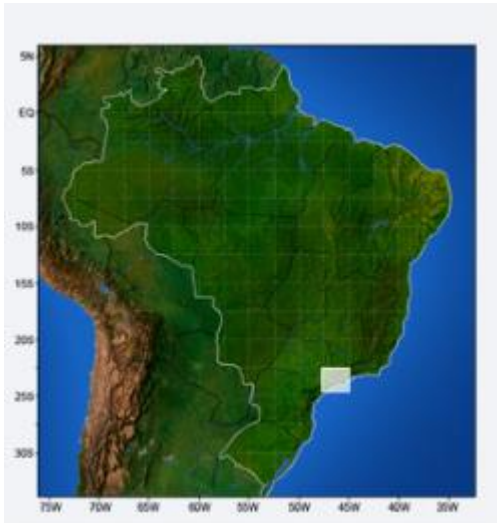
Anomalia de Precipitacao BR SE (mm)
Periodo: 2022091300 a 2022092700



Previsão de Temperatura para as próximas duas semanas

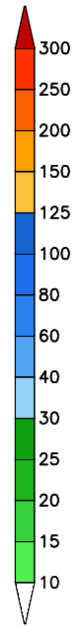
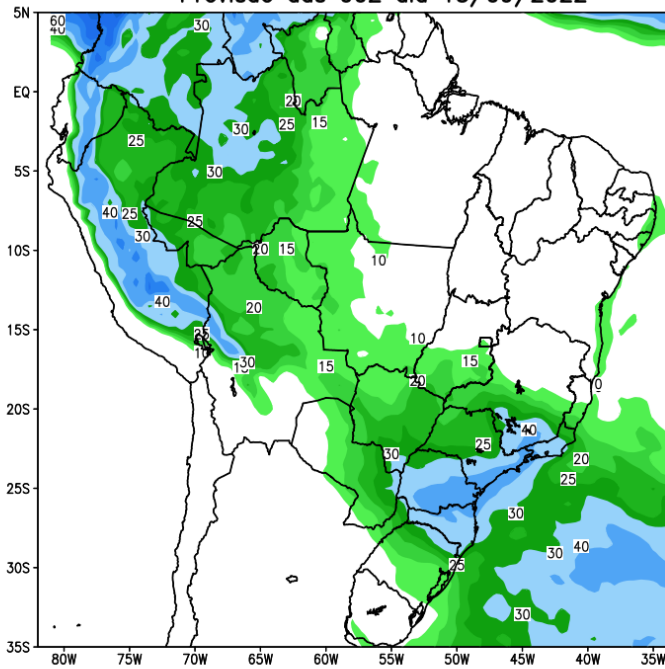


Data de início da estação chuvosa

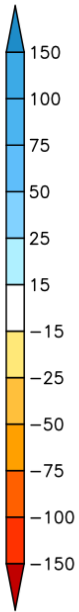
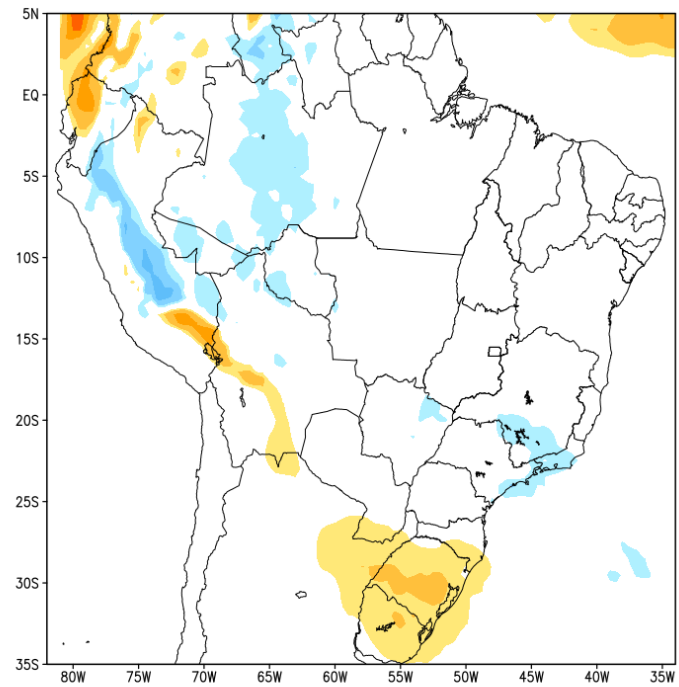


Previsão para a semana 21 a 27 de setembro

GEFS / BRASIL
Precipitação acumulada 2aSem (mm)
Previsão das 00Z dia 13/09/2022



Anomalia de Precipitação BR (mm)
Período: 2022092100 a 2022092700



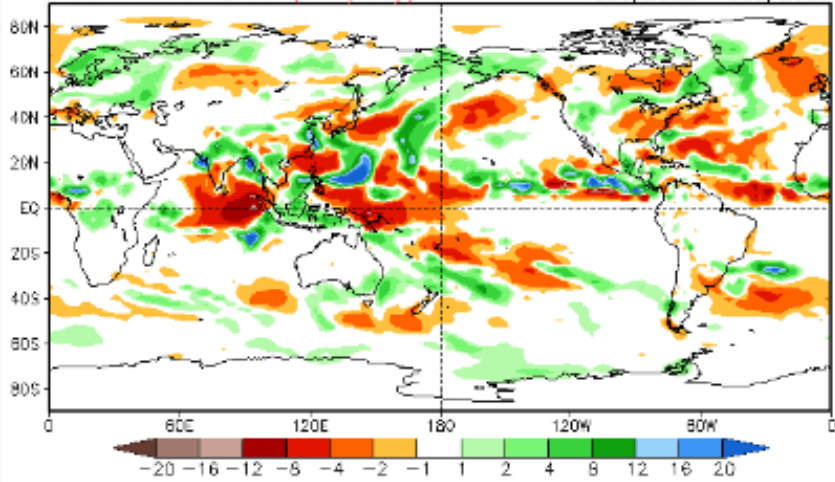
Tendência 3a e 4a semanas

CFSv2 Weeks 1 & 2 Precipitation

16 Member Ensemble Mean Forecast from 12Sep2022

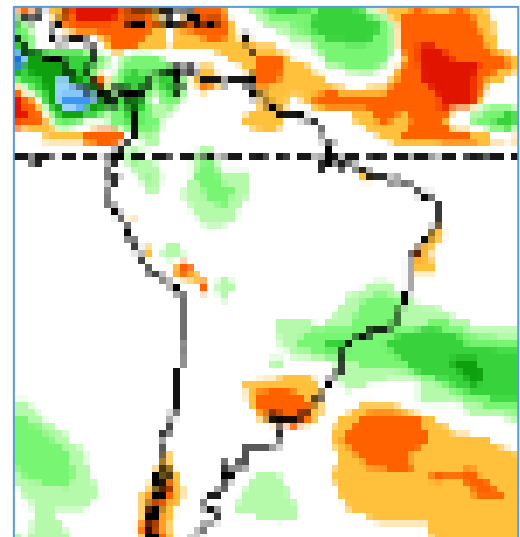
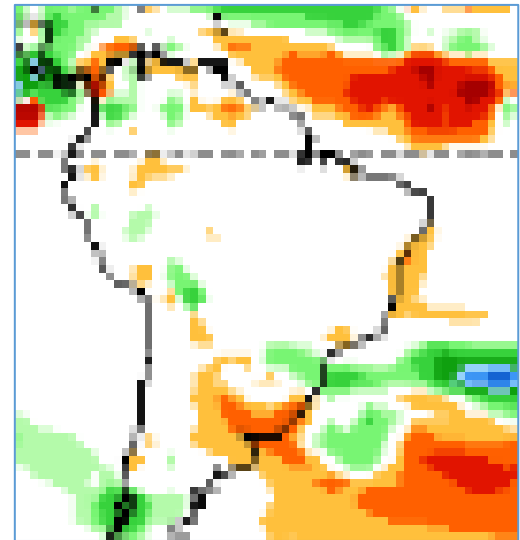
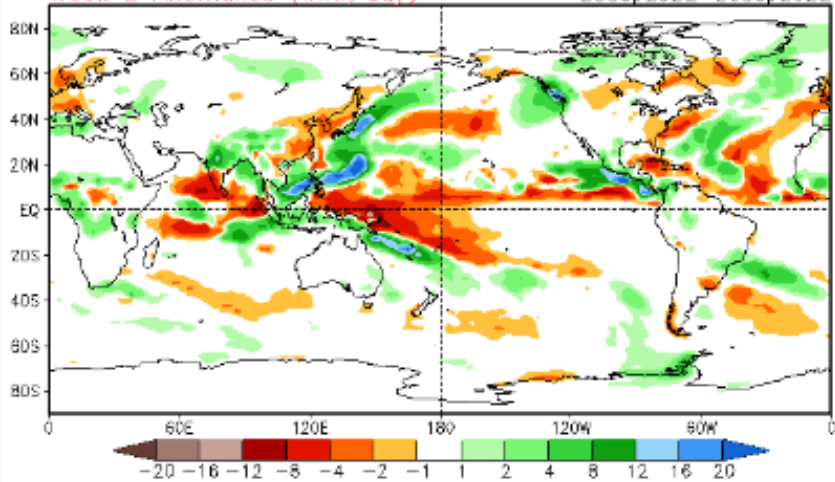
Week 1 Anomalies (mm/day)

13Sep2022-19Sep2022



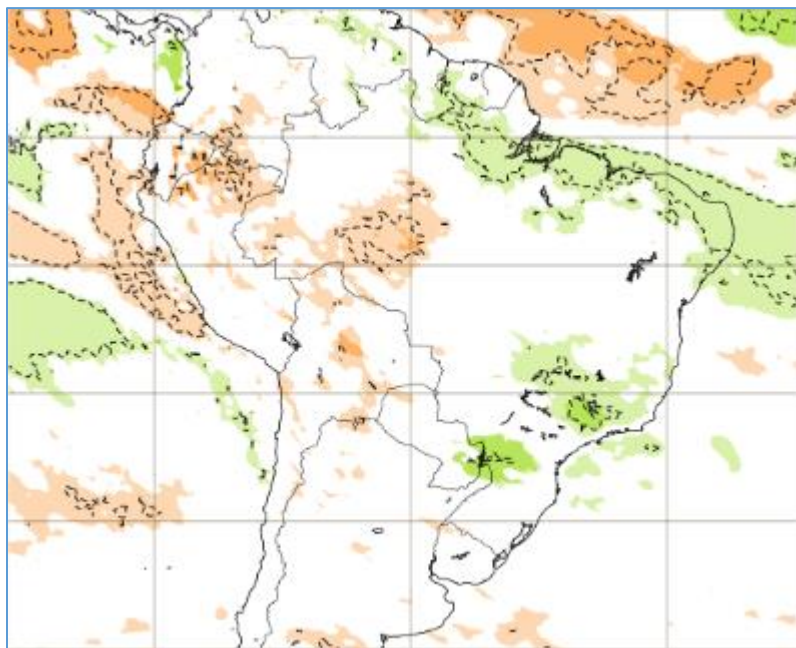
Week 2 Anomalies (mm/day)

20Sep2022-26Sep2022

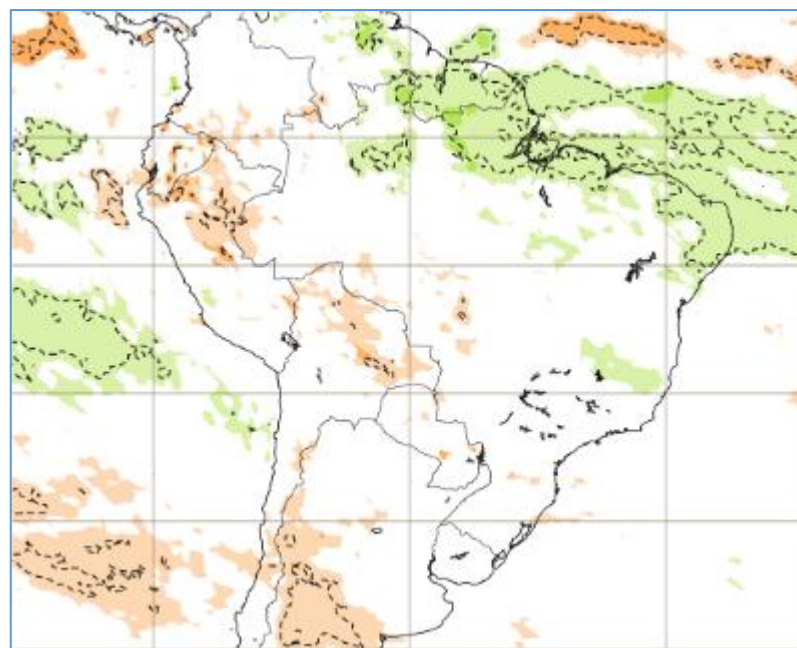


Tendência para 3ª e 4ª semanas

26/09-03/10

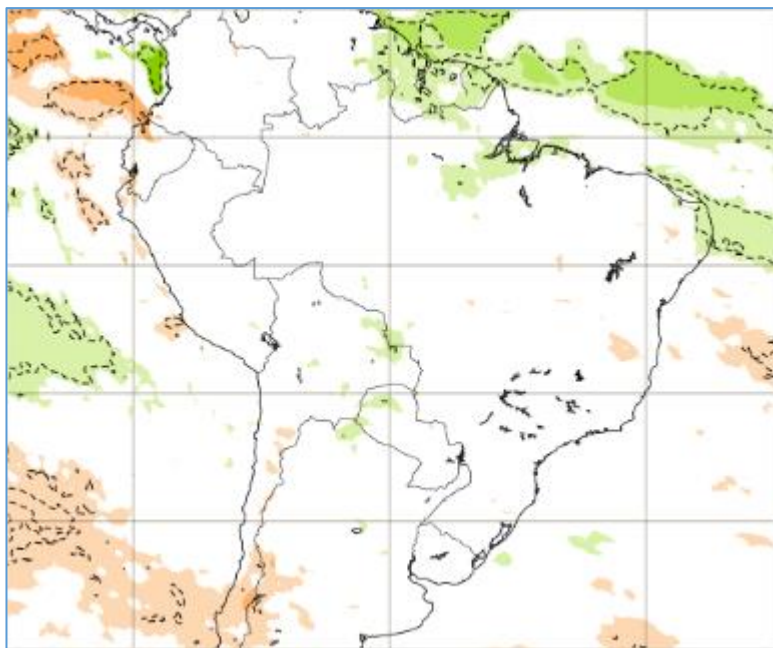


03/10-10/10



Tendência para 5ª e 6ª semanas

10-17/10



17-24/10

