



# CEMADEN

Centro Nacional de Monitoramento e  
Alertas de Desastres Naturais

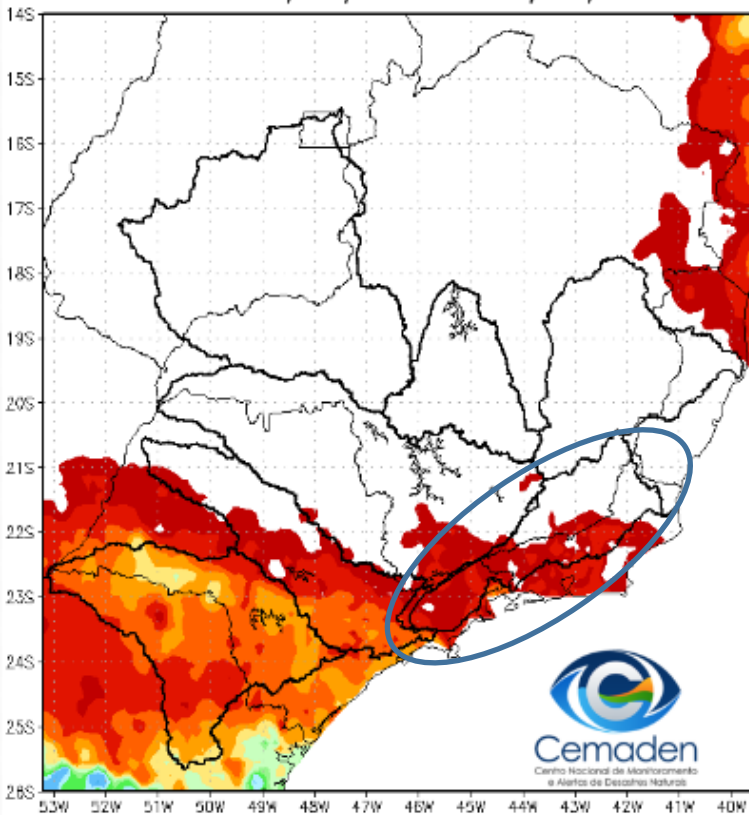
## Monitoramento e Previsões de Chuva para a Bacia do Rio Paraíba do Sul

11 de Julho de 2024

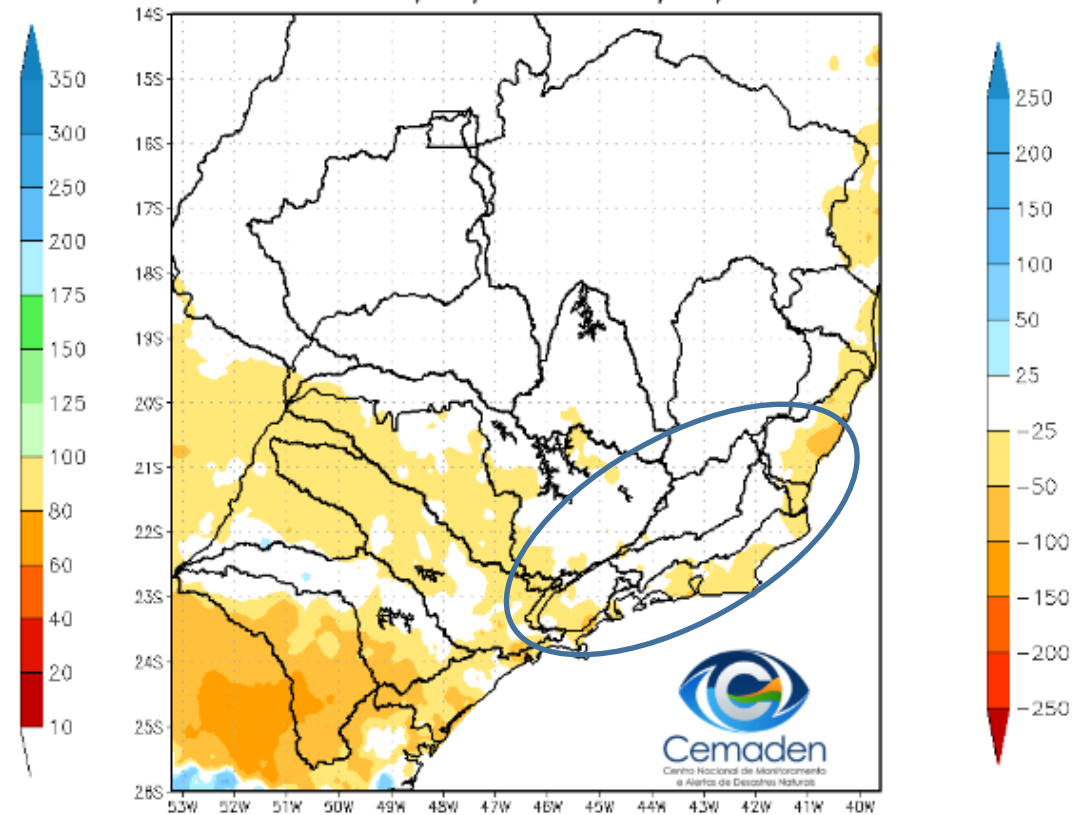


# Precipitação acumulada nos últimos 30 dias

Precipitação Acumulada (mm) A.S.  
Período: 10/06/2024 a 10/07/2024



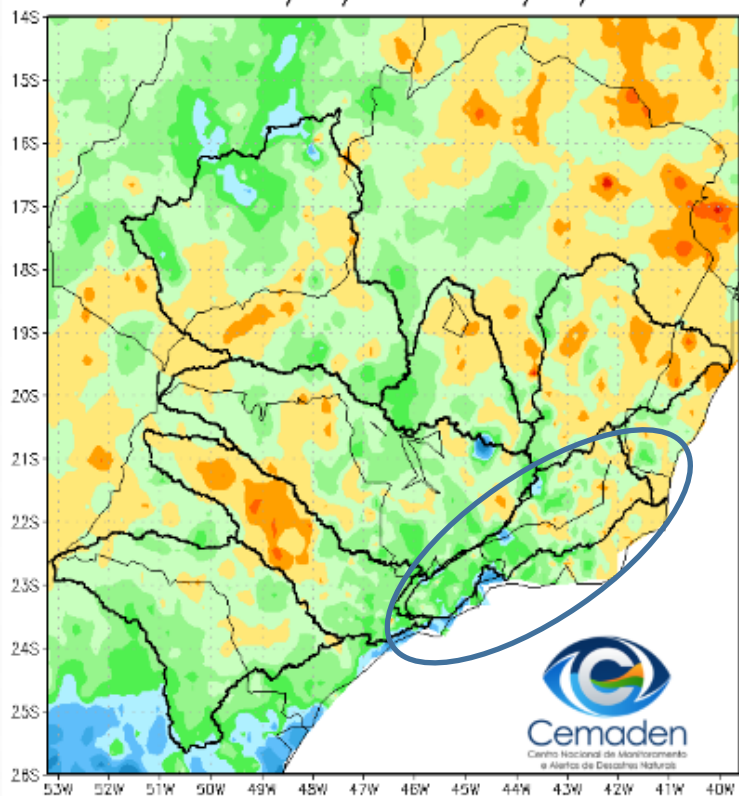
Anomalia de Precipitação (mm) A.S.  
Período: 10/06/2024 a 10/07/2024



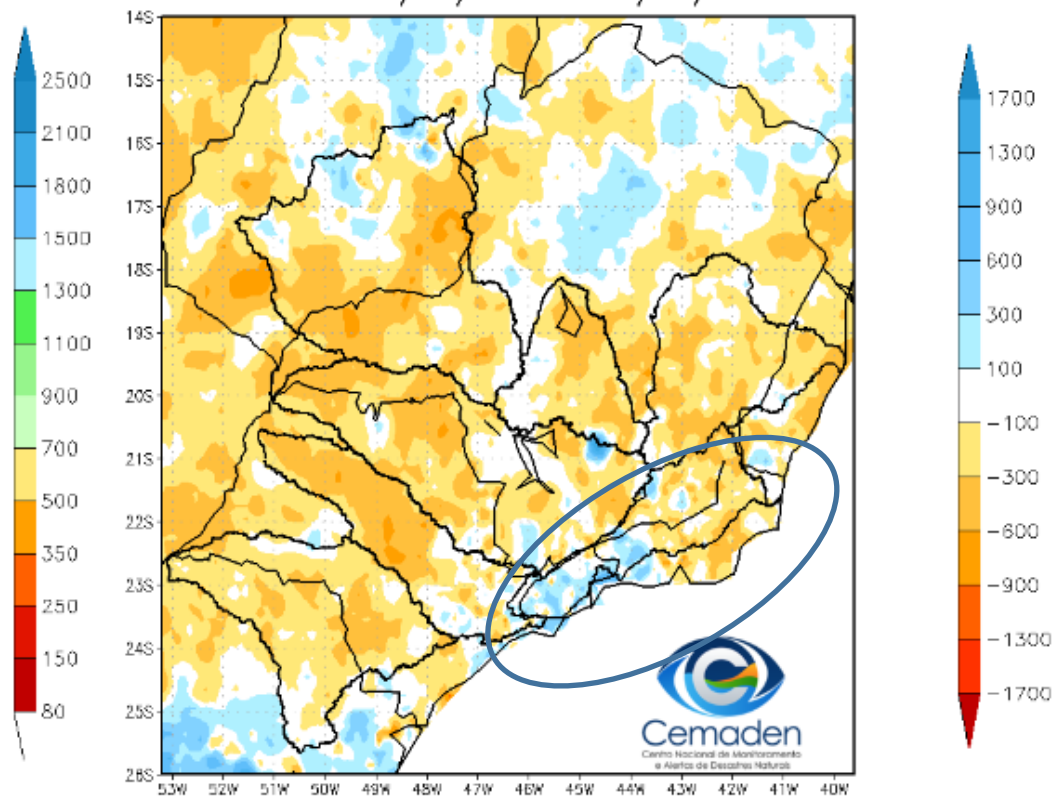
FONTE DOS DADOS INPE

# Precipitação acumulada no ano hidrológico

Precipitação Acumulada (mm) A.S.  
Período: 01/10/2023 a 10/07/2024

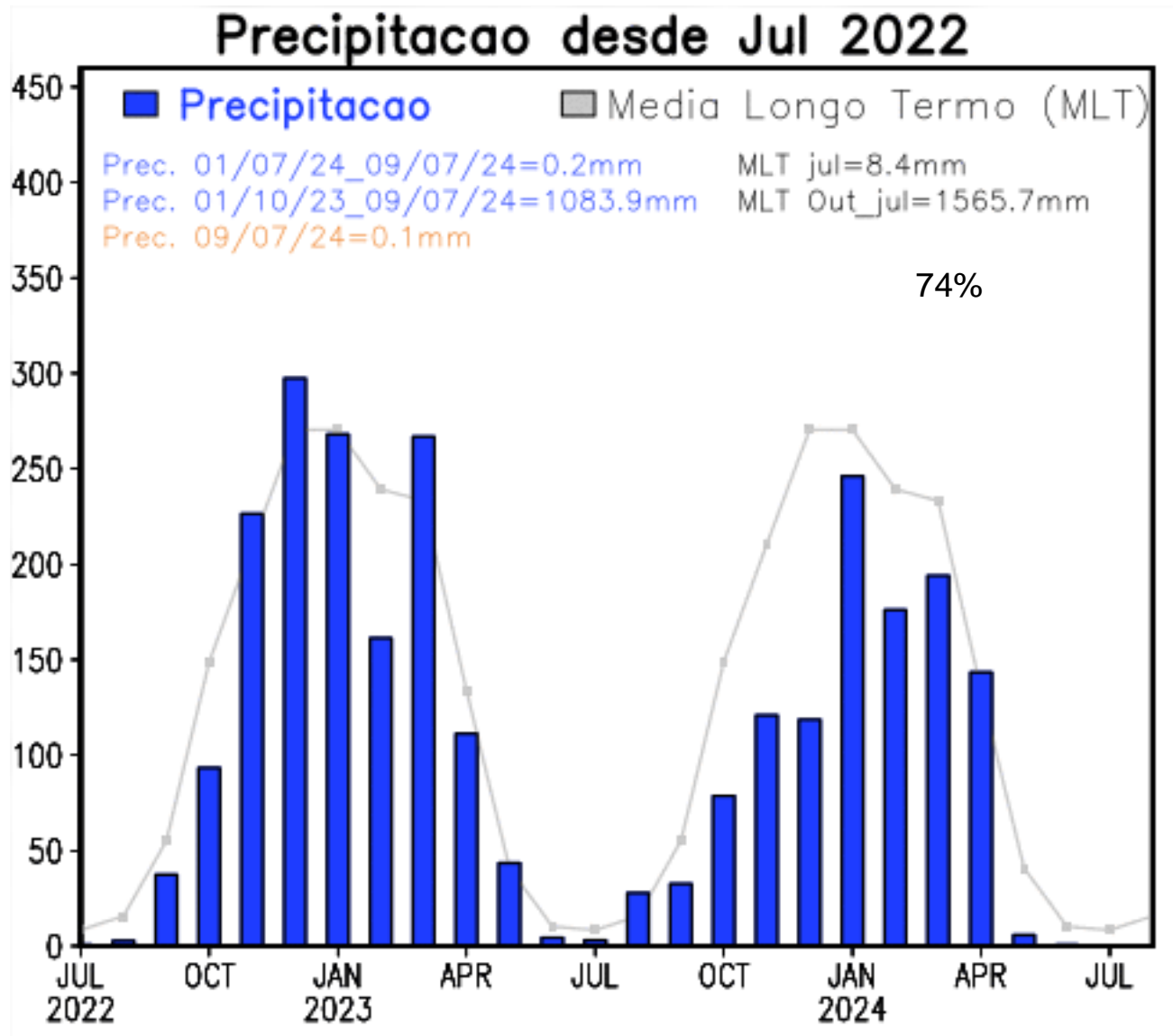


Anomalia de Precipitação (mm) A.S.  
Período: 01/10/2023 a 10/07/2024

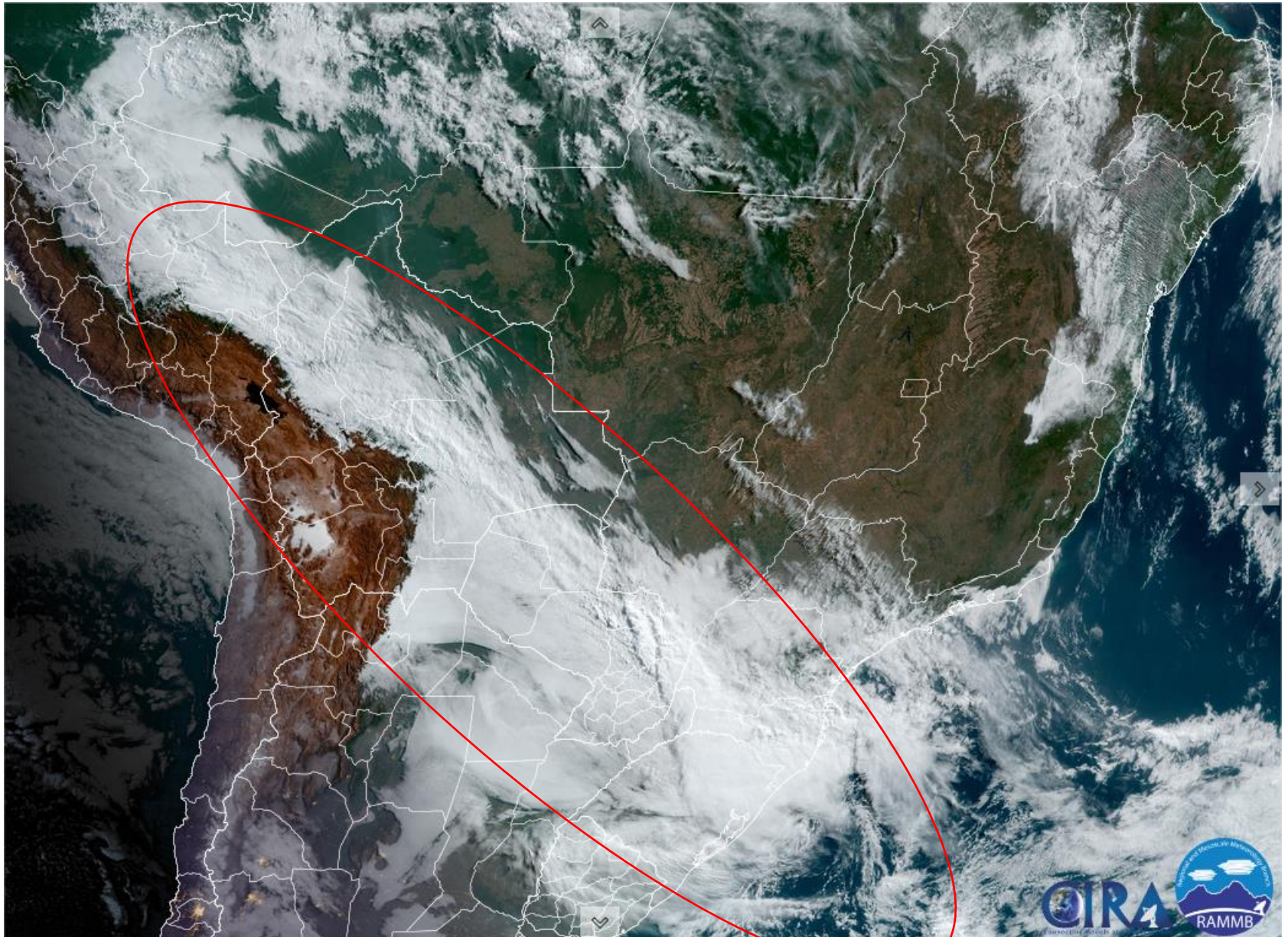


FORNE DOS DADOS INPE

# Precipitação nos últimos 2 anos

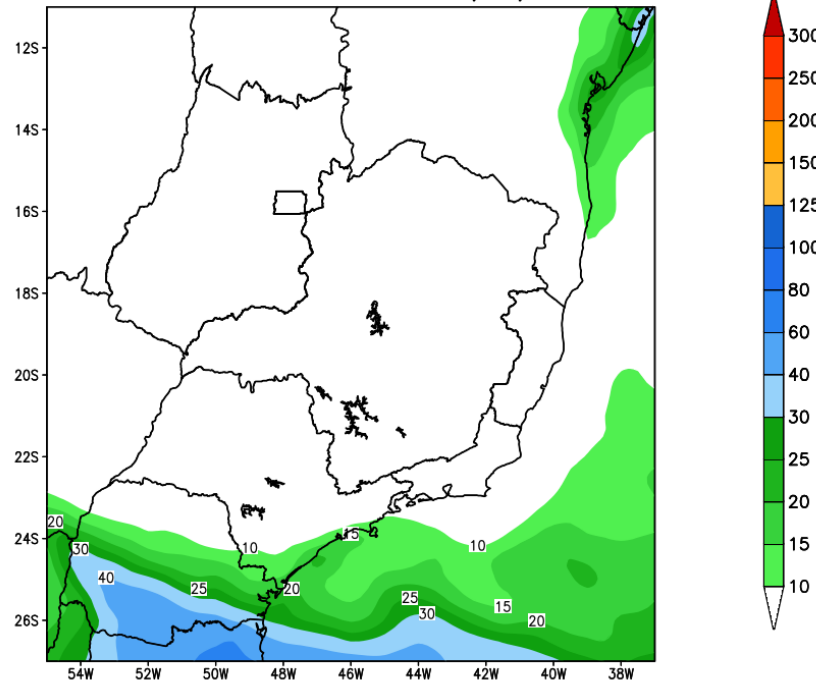


# Situação meteorológica atual

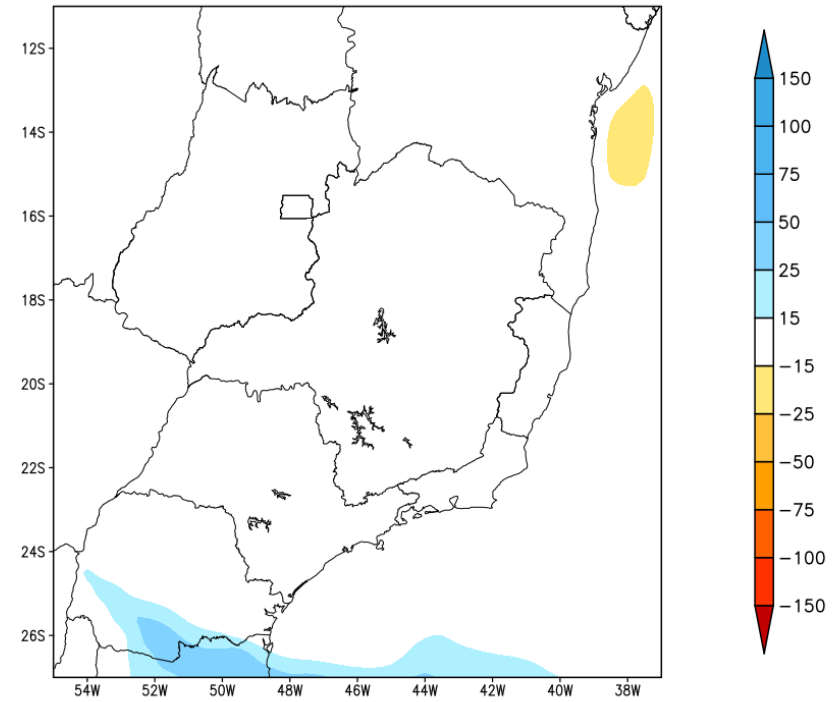


# Previsão de chuva para os próximos 7 dias

GEFS / BRASIL\_SE  
Precipitacao acumulada 1aSem (mm)  
Previsao das 00Z dia 11/07/2024

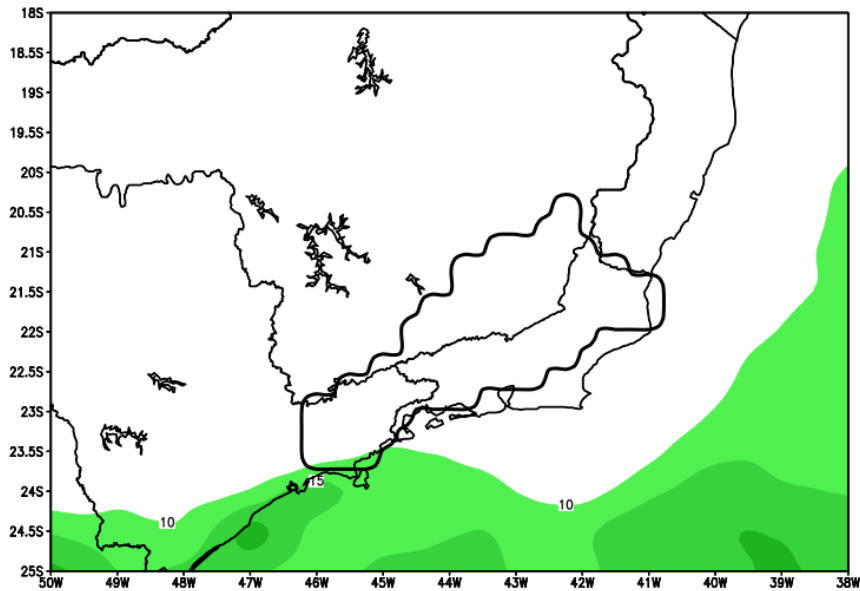


Anomalia de Precipitacao BR\_SE (mm)  
Periodo: 2024071100 a 2024071800

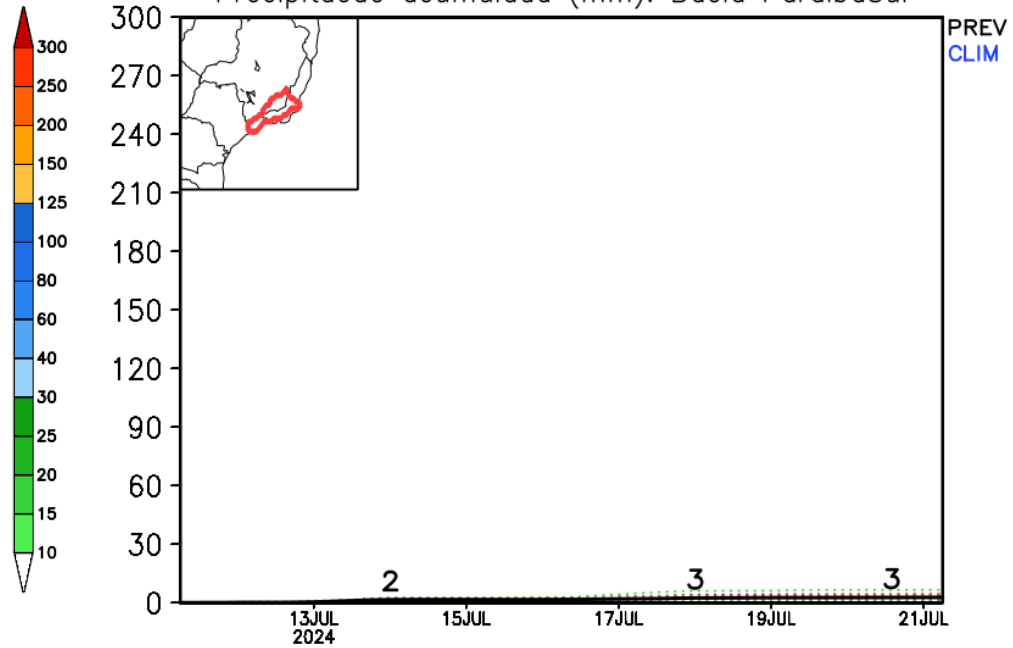


# Rio Paraíba do Sul

GEFS / Bacia do Rio Paraíba do Sul  
Precipitacao acumulada em 7 dias (mm)  
Previsao das 00Z dia 11/07/2024



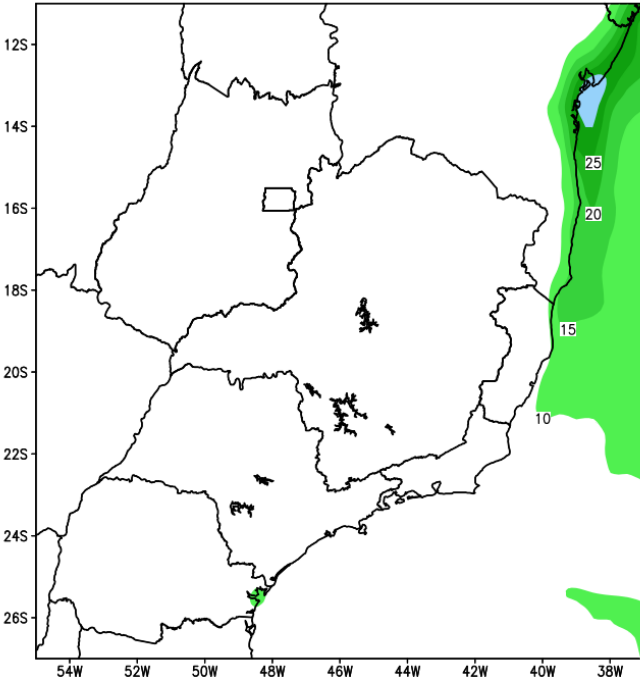
Precipitacao acumulada (mm): Bacia ParaibaSul



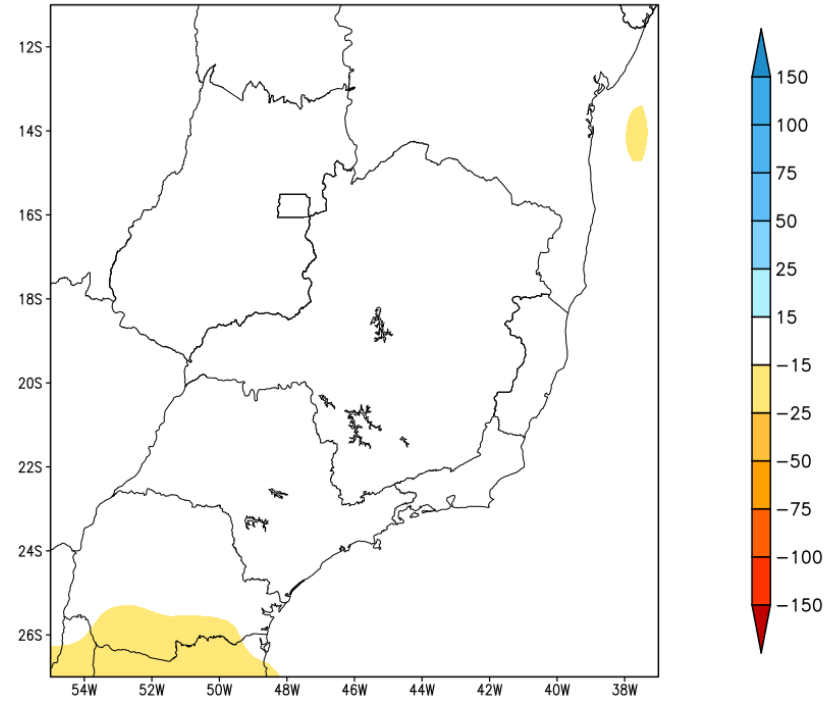
Modelo GFS/NOAA

# Tendência para a 2a semana

GEFS / BRASIL\_SE  
Precipitacao acumulada 2aSem (mm)  
Previsao das 00Z dia 11/07/2024

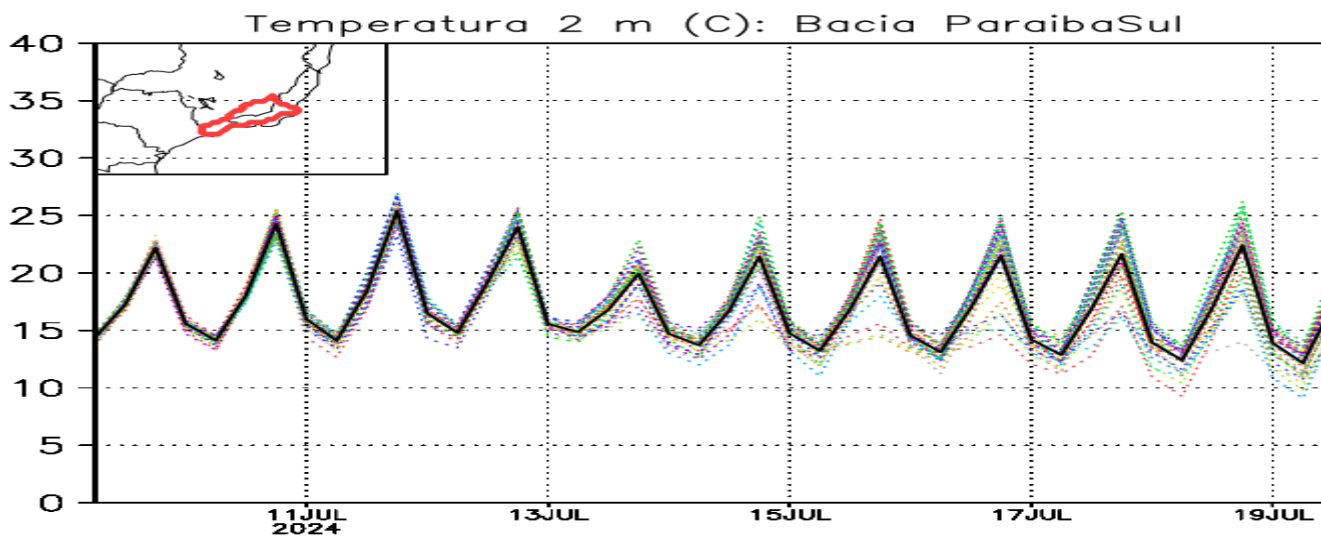
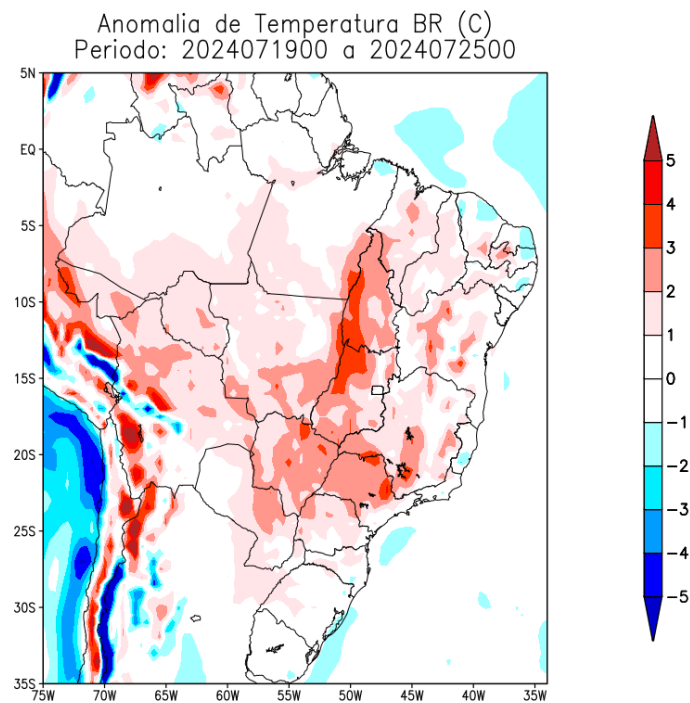
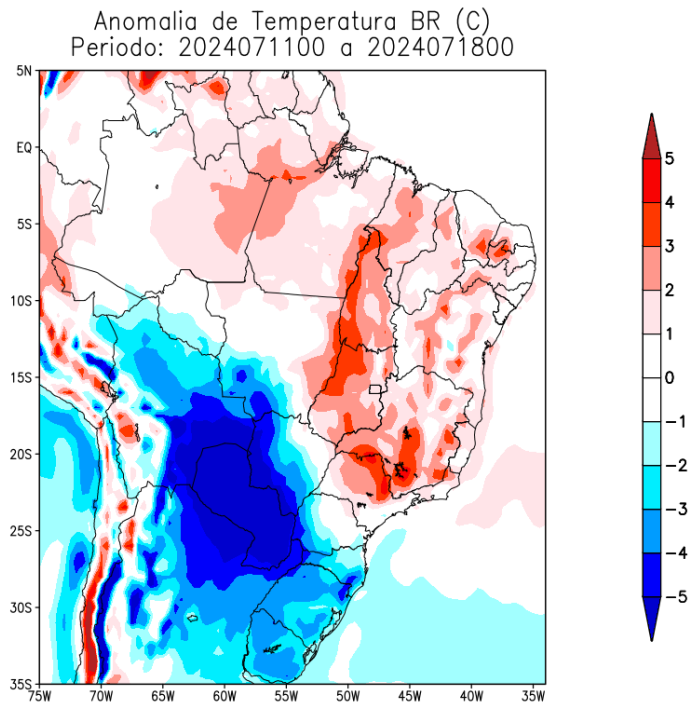


Anomalia de Precipitacao BR\_SE (mm)  
Periodo: 2024071900 a 2024072500





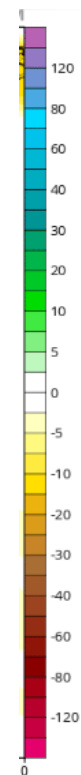
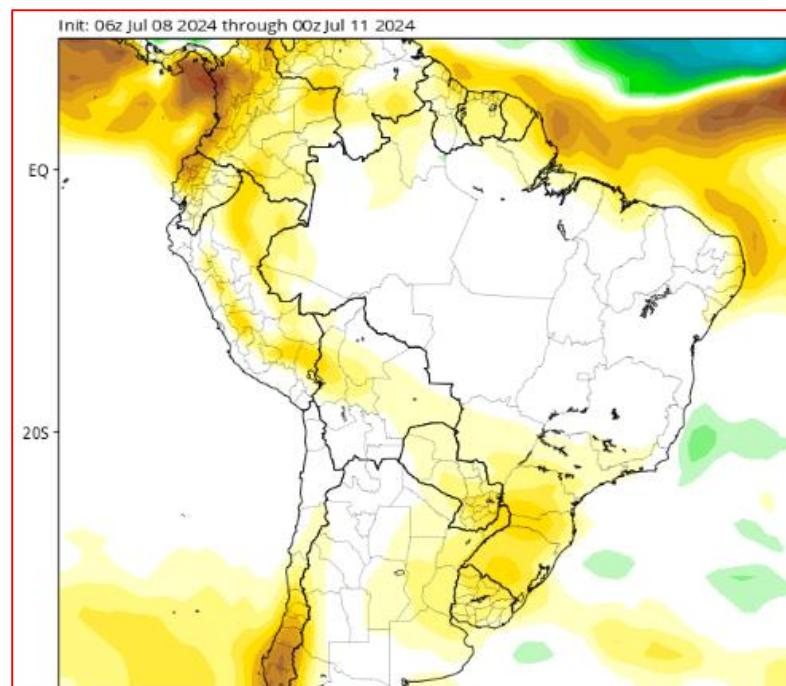
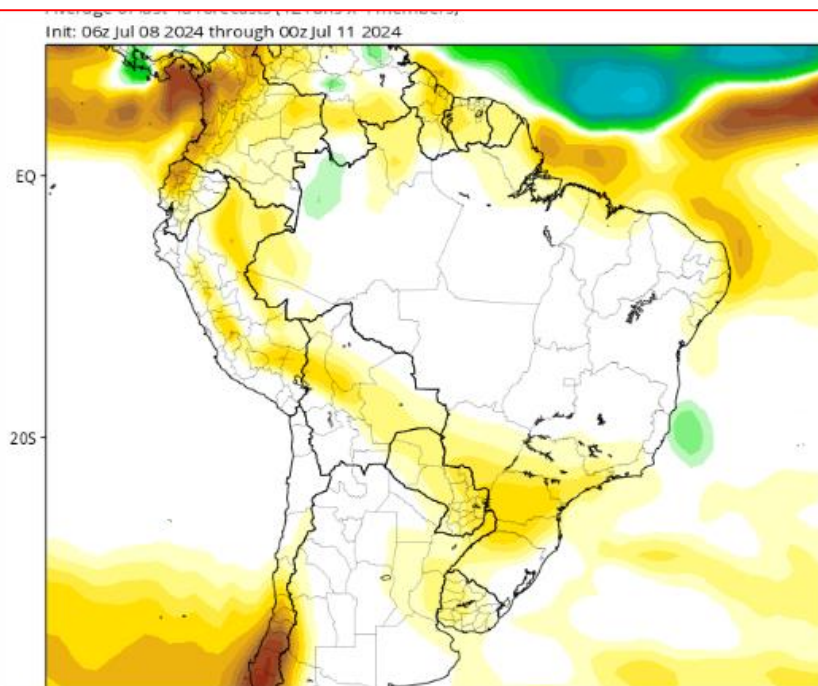
# Previsão de Temperatura para as próximas duas semanas



# Tendência 3a e 4a semanas

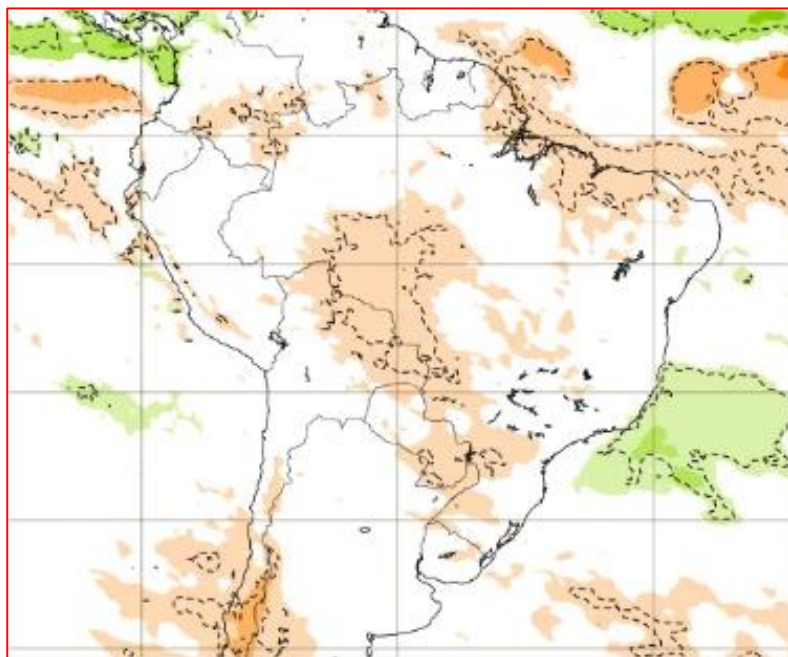
25 Julho- 01 Agosto

01- 08 Agosto

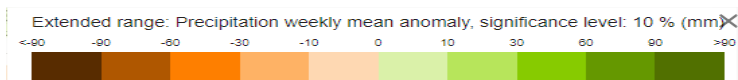
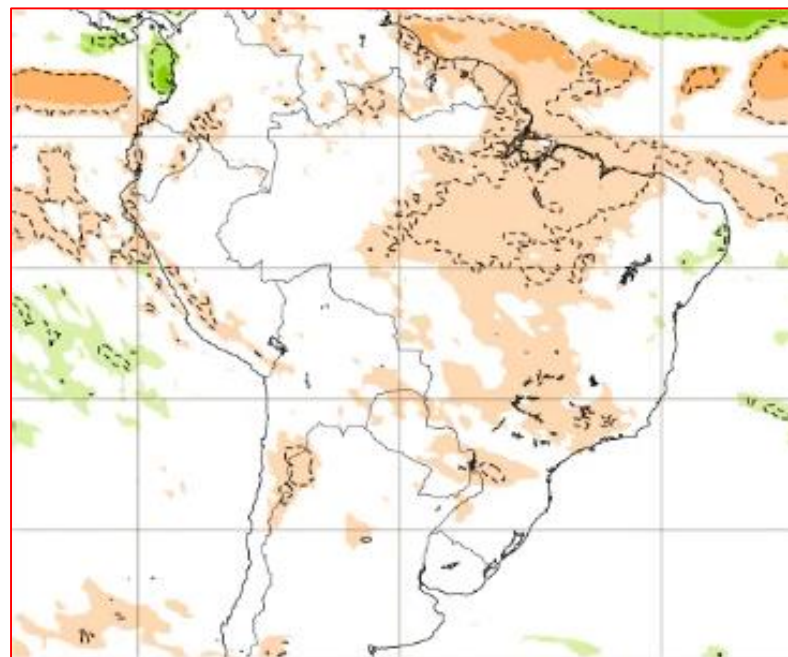


# Tendência para 3ª e 4ª semanas

29 Julho- 05 Agosto

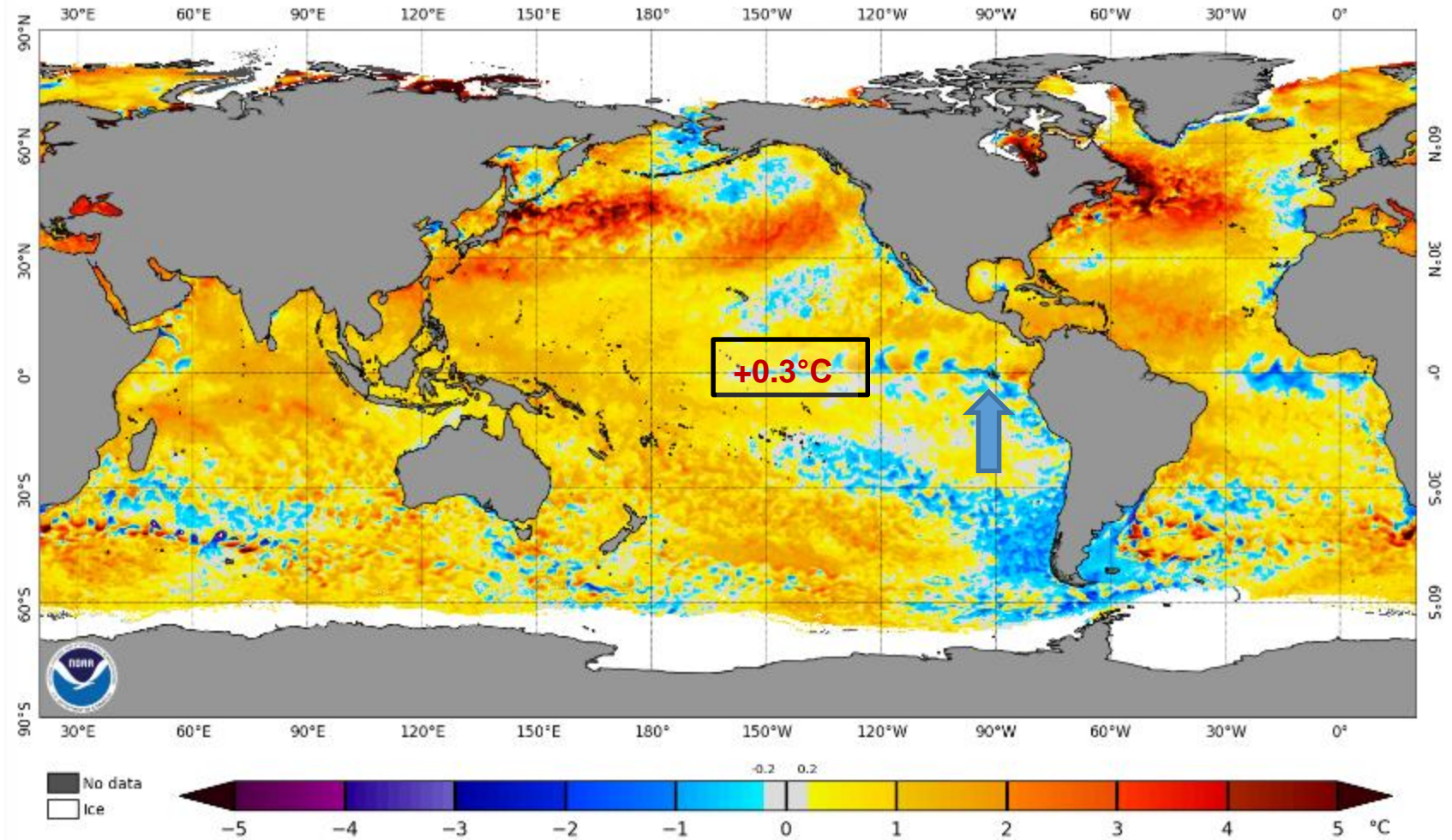


05-12 Agosto



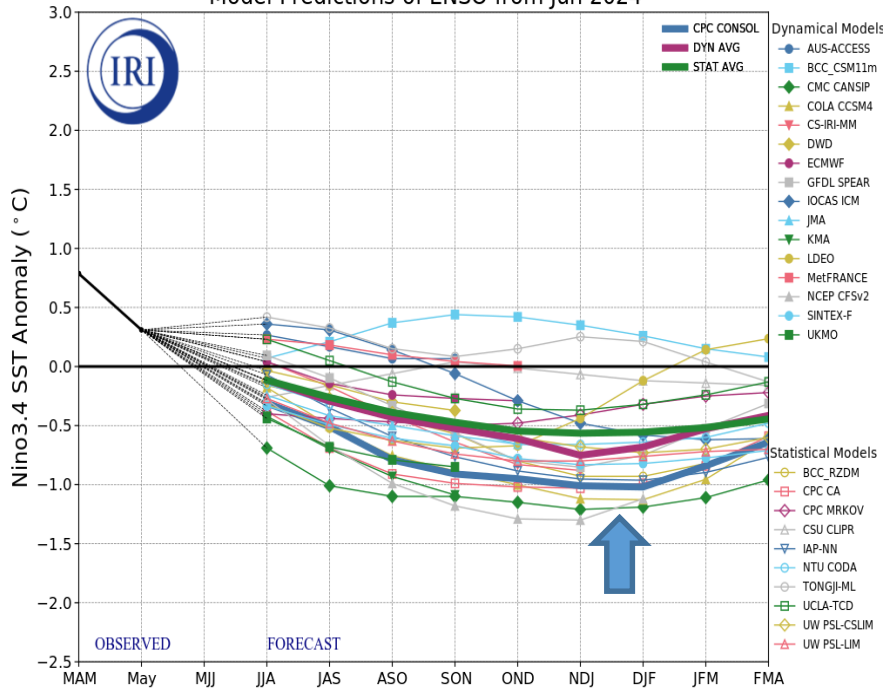
# Status Atual: **La Niña Watch**

NOAA Coral Reef Watch Daily 5km SST Anomalies (v3.1) 9 Jul 2024

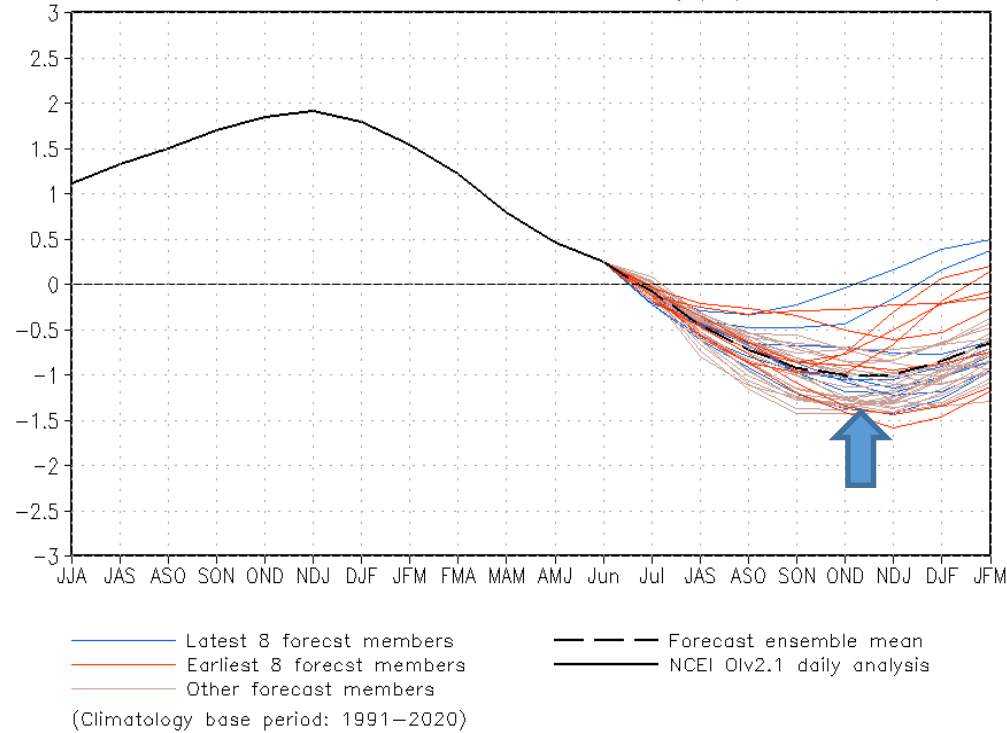


# Previsão do “ENSO”

Model Predictions of ENSO from Jun 2024

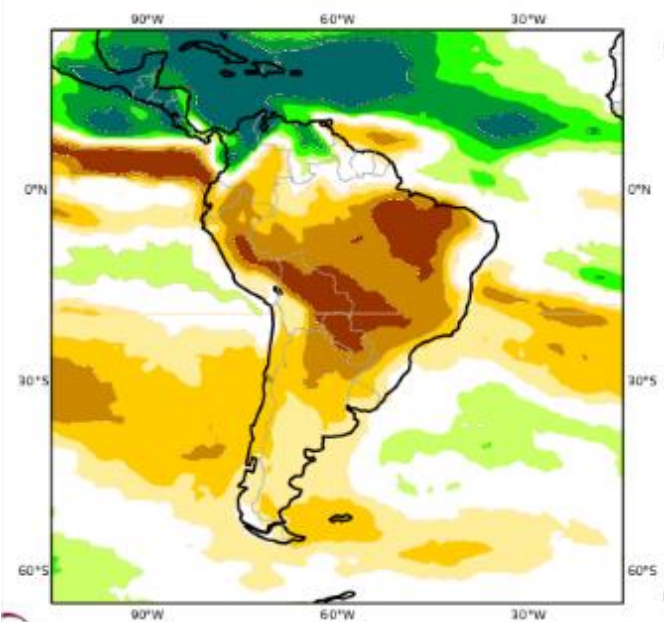


CFSv2 forecast Nino3.4 SST anomalies (K) (PDF corrected)

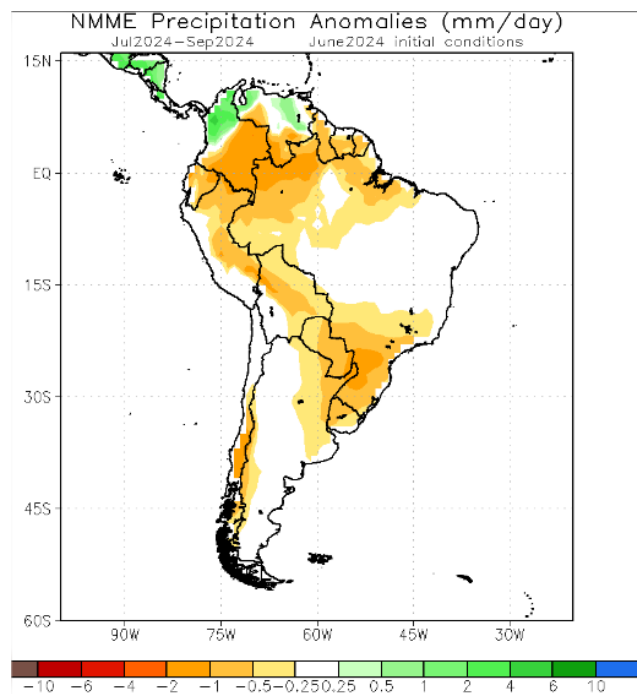


Atualizado 8 de julho

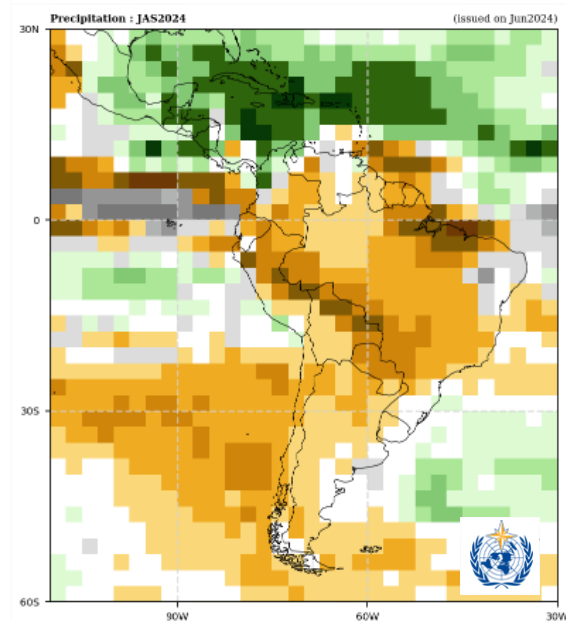
# Previsão Sazonal de Chuva Multi-Modelo para JAS



Modelos Europeus



Modelos Americanos



Modelos da Organização Meteorológica Mundial