

# Monitoramento e Previsões de Chuva para a Bacia do Rio Paraíba do Sul

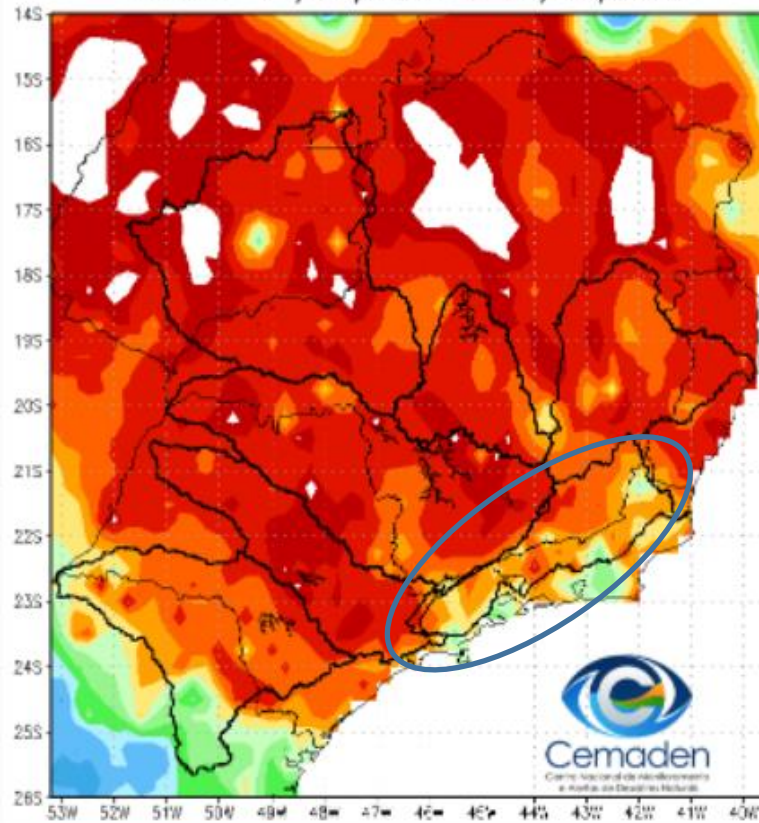


**Cemaden**  
Centro Nacional de Monitoramento  
e Alertas de Desastres Naturais

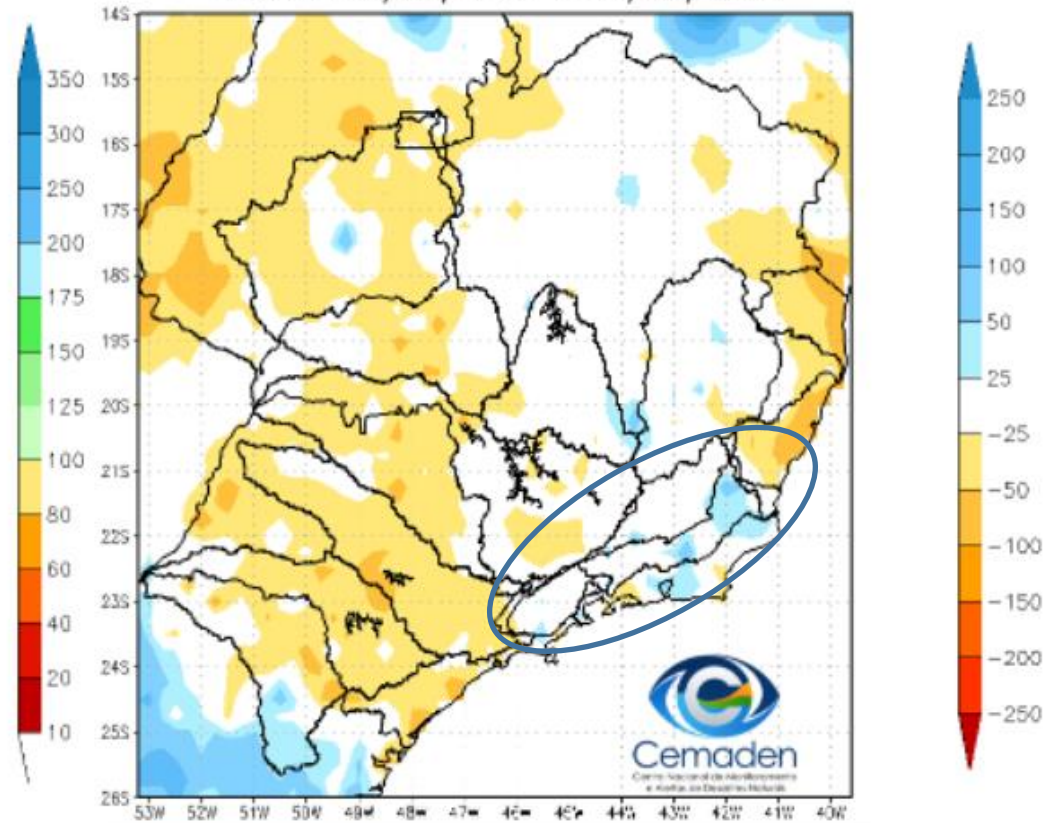
10 de Maio de 2022

# Precipitação acumulada nos últimos 30 dias

Precipitacao Acumulada (mm) A.S.  
Período: 09/04/2022 a 09/05/2022



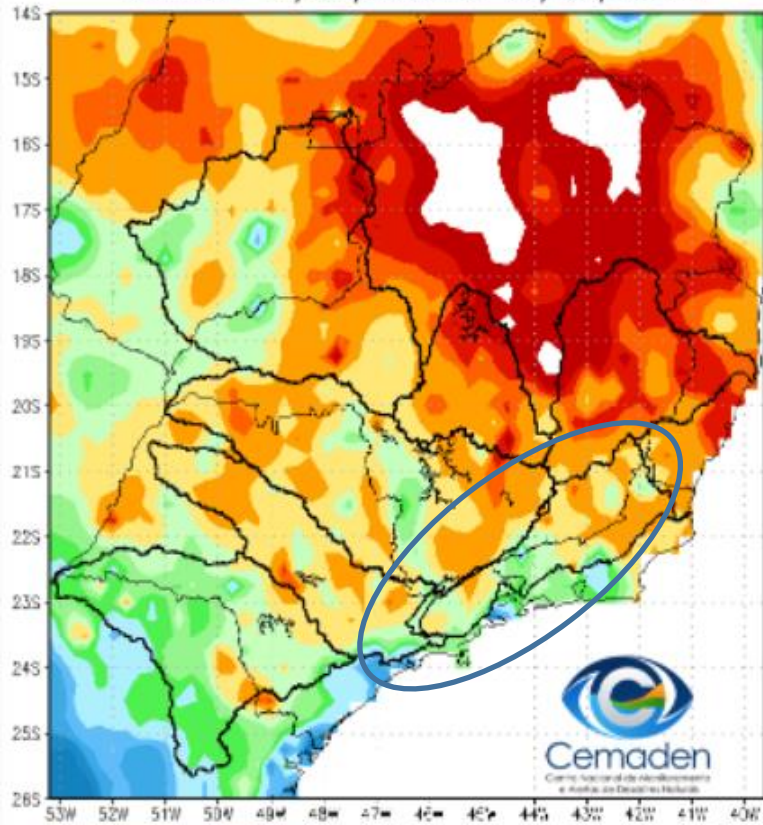
Anomalia de Precipitacao (mm) A.S.  
Período: 09/04/2022 a 09/05/2022



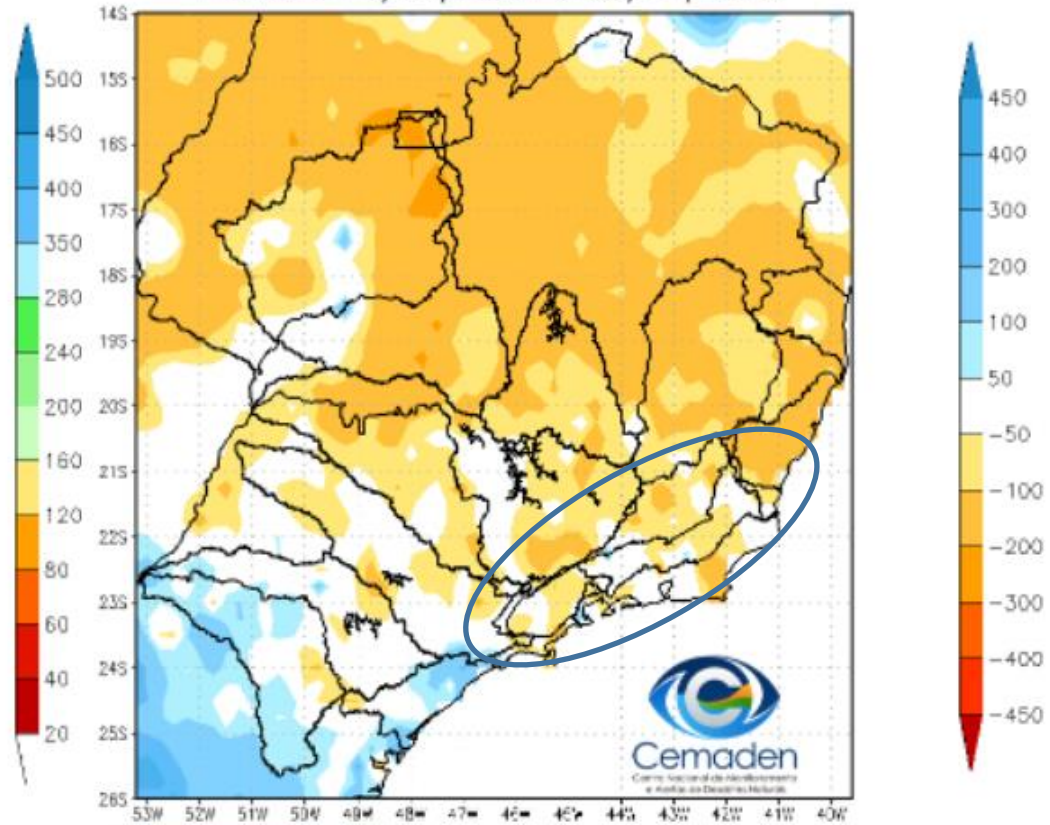
FONTE DOS DADOS INPE

# Precipitação acumulada nos últimos 60 dias

Precipitação Acumulada (mm) A.S.  
Período: 10/03/2022 a 09/05/2022

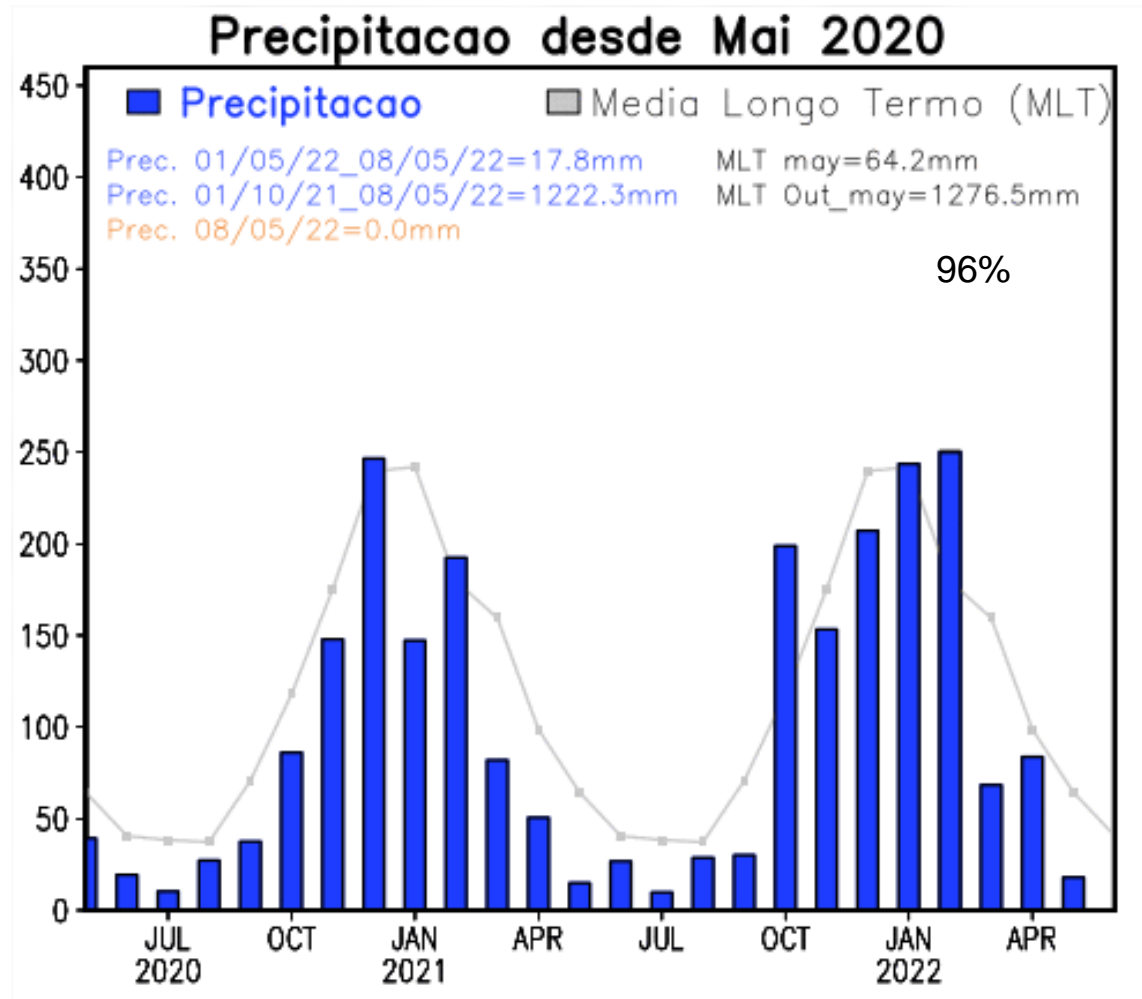


Anomalia de Precipitação (mm) A.S.  
Período: 10/03/2022 a 09/05/2022

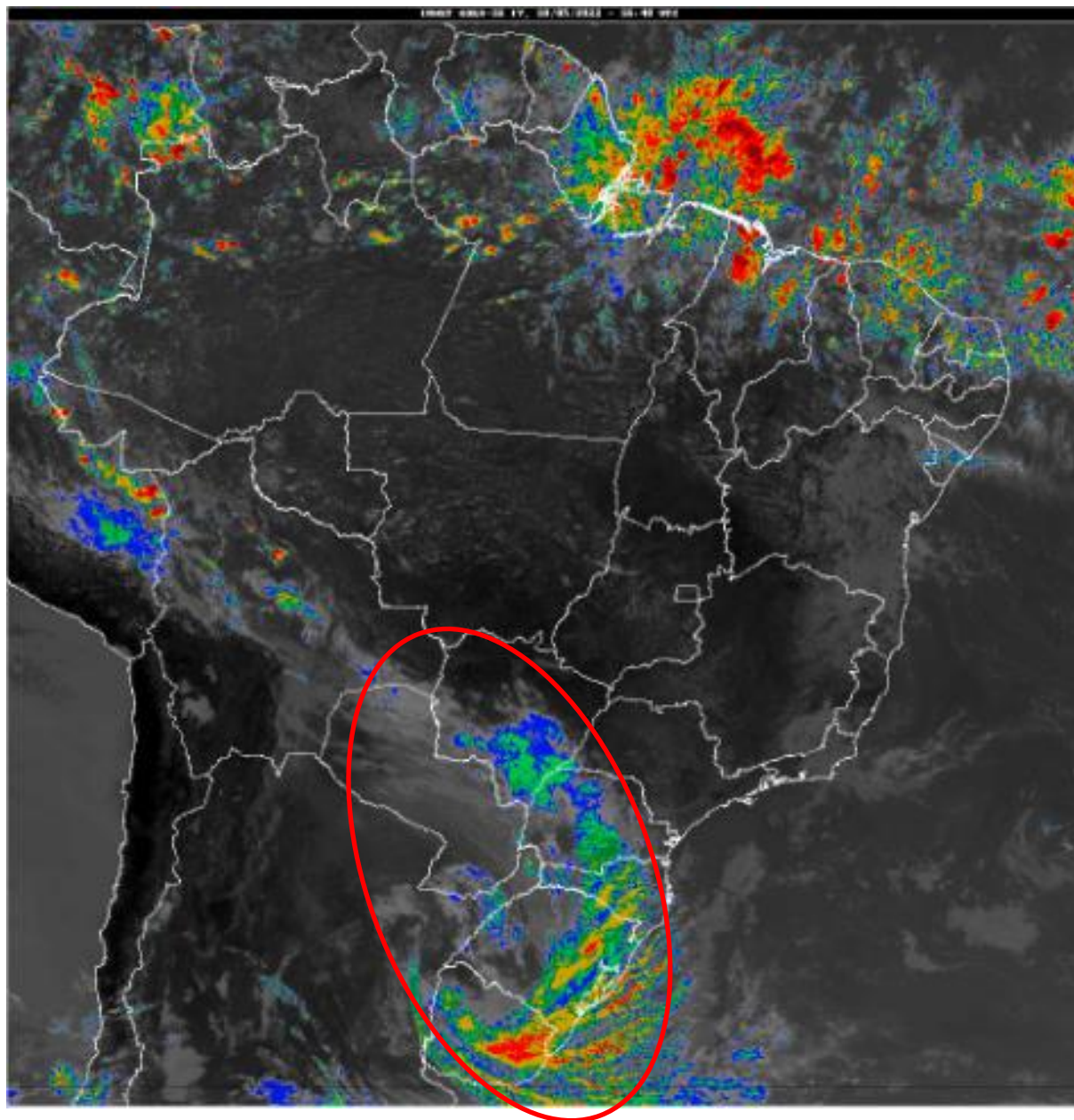


FONTE DOS DADOS INPE

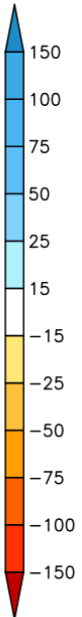
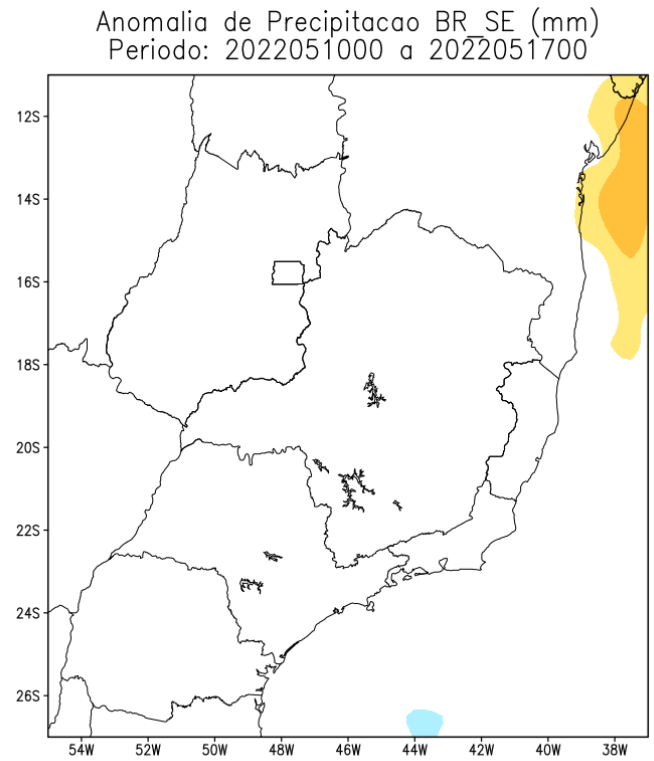
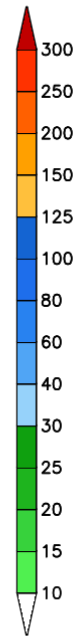
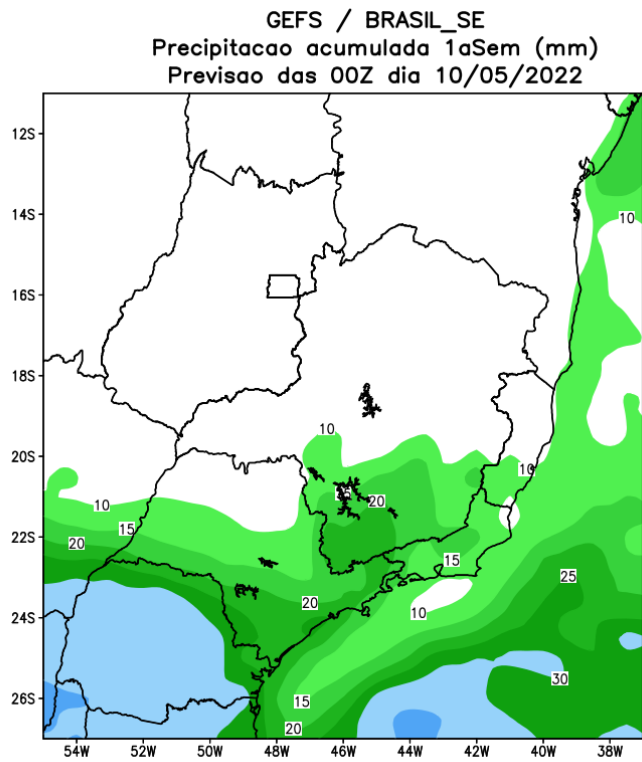
# Precipitação nos últimos 2 anos



# Situação meteorológica atual

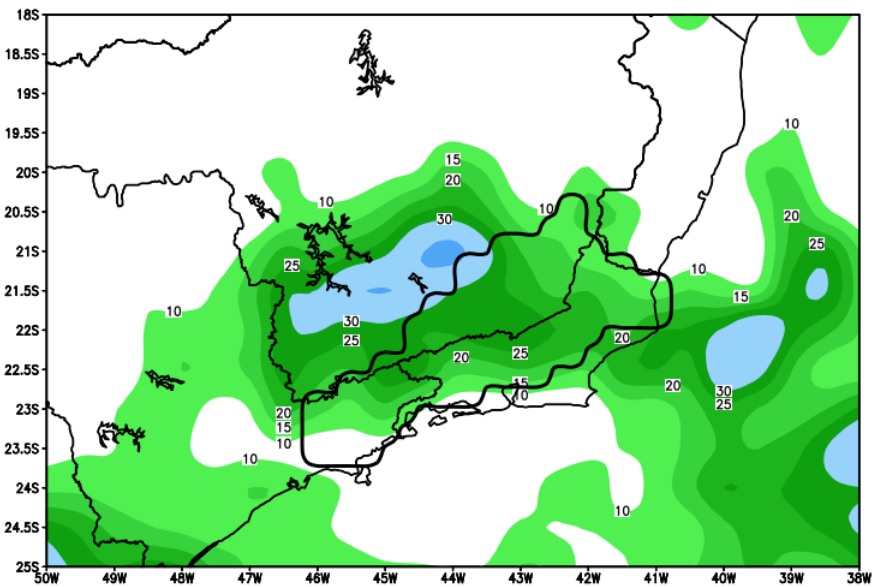


# Previsão de chuva para os próximos 7 dias

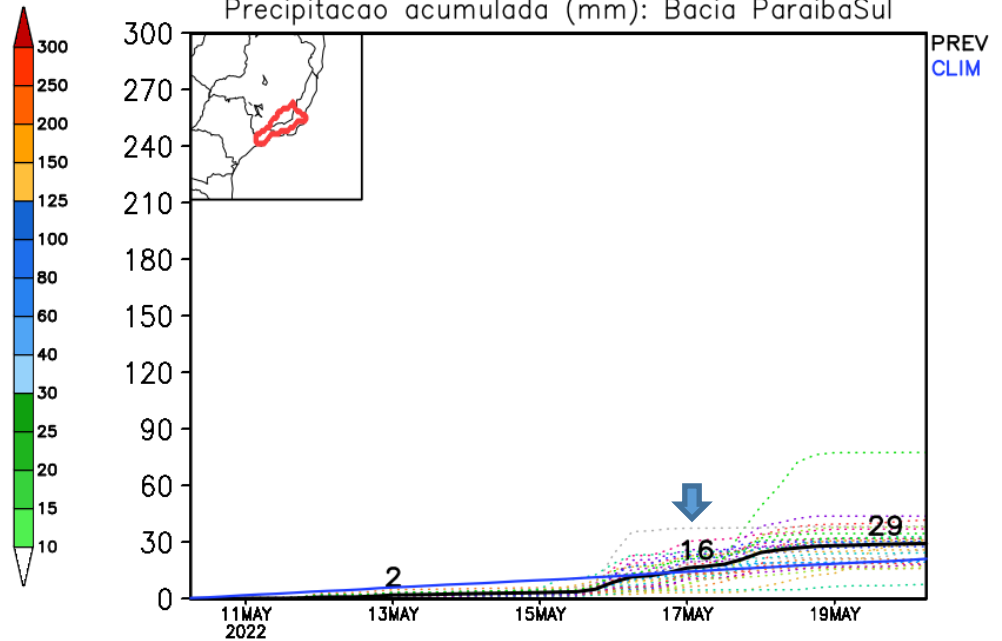


# Rio Paraíba do Sul

GEFS\_BC / Bacia do Rio Paraíba do Sul  
Prec. acumulada com correcao de vies em 7 dias (mm)  
Previsao das 00Z dia 10/05/2022



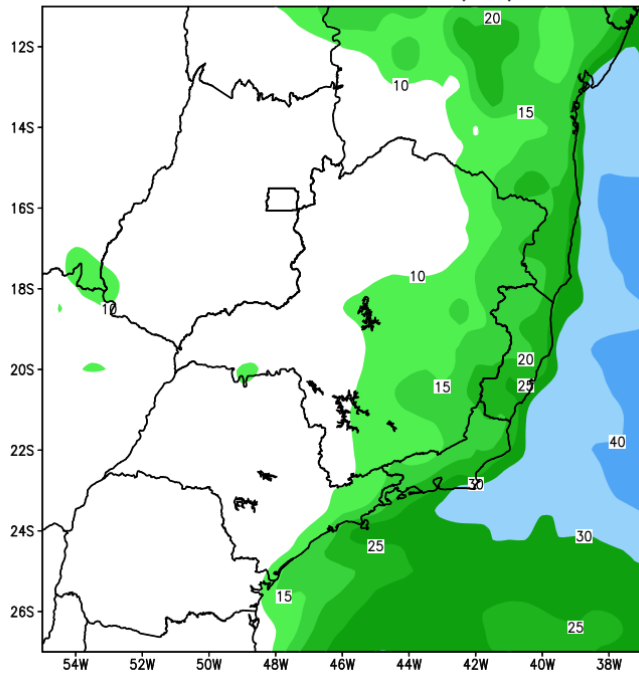
Precipitacao acumulada (mm): Bacia ParaibaSul



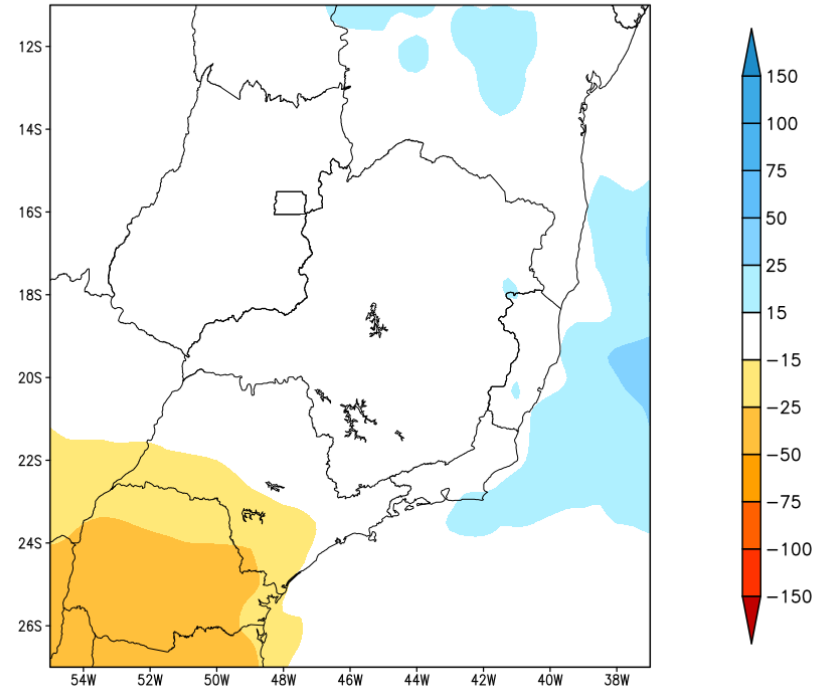
Modelo GFS/NOAA

# Tendência para a 2a semana

GEFS / BRASIL\_SE  
Precipitacao acumulada 2aSem (mm)  
Previsao das 00Z dia 10/05/2022



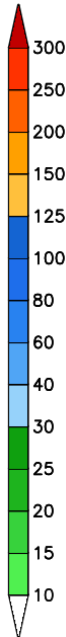
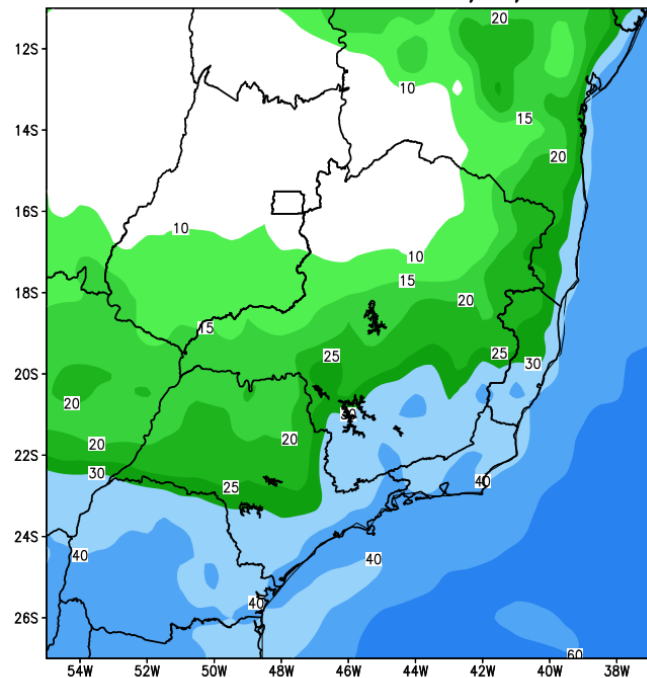
Anomalia de Precipitacao BR\_SE (mm)  
Periodo: 2022051800 a 2022052400



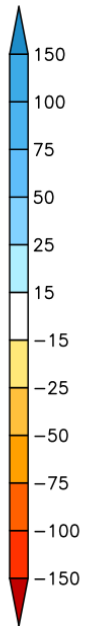
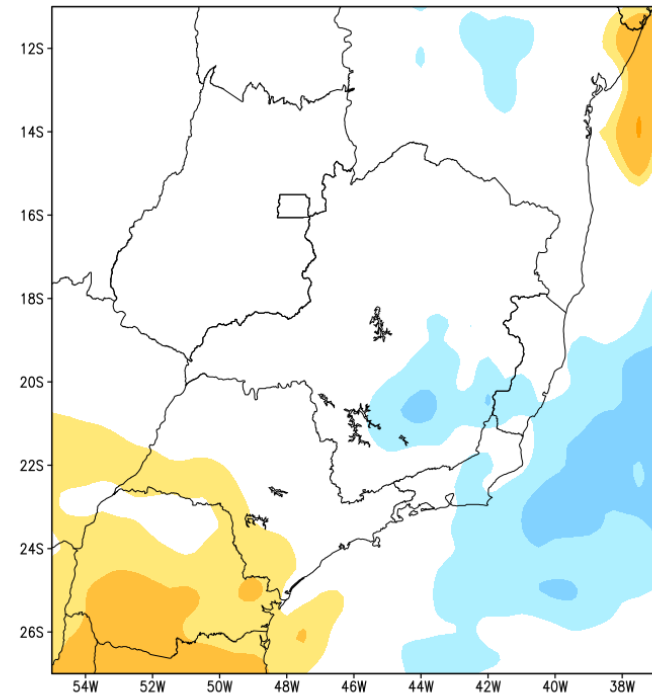


# Tendência para as próximas duas semanas

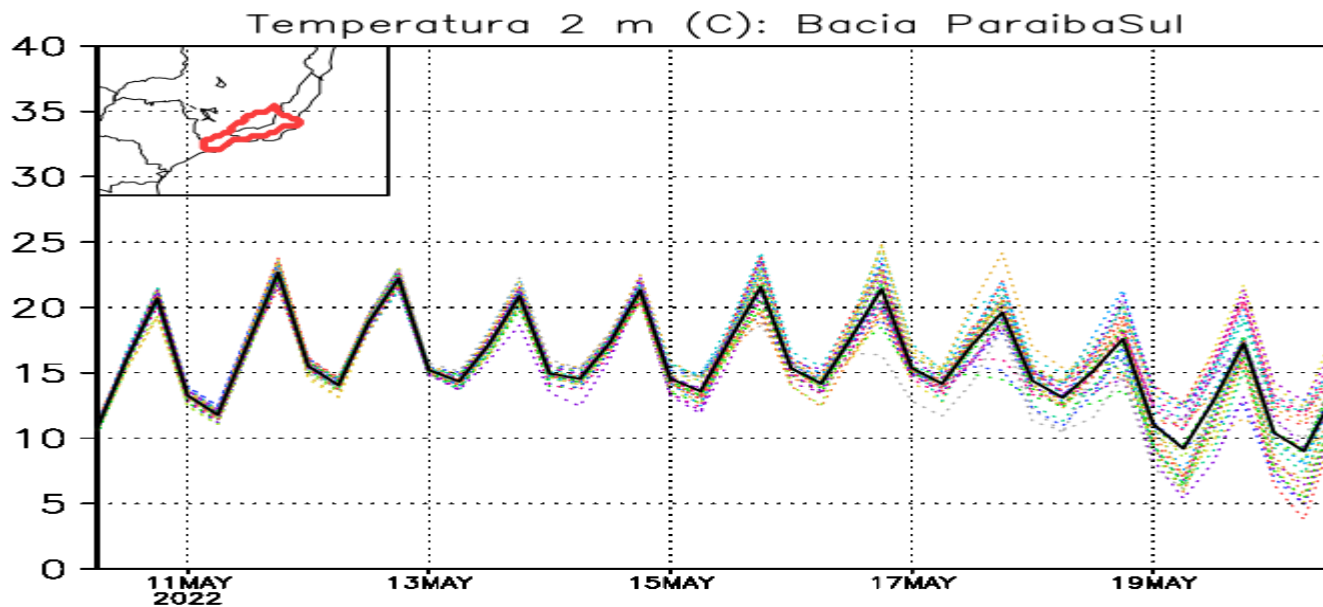
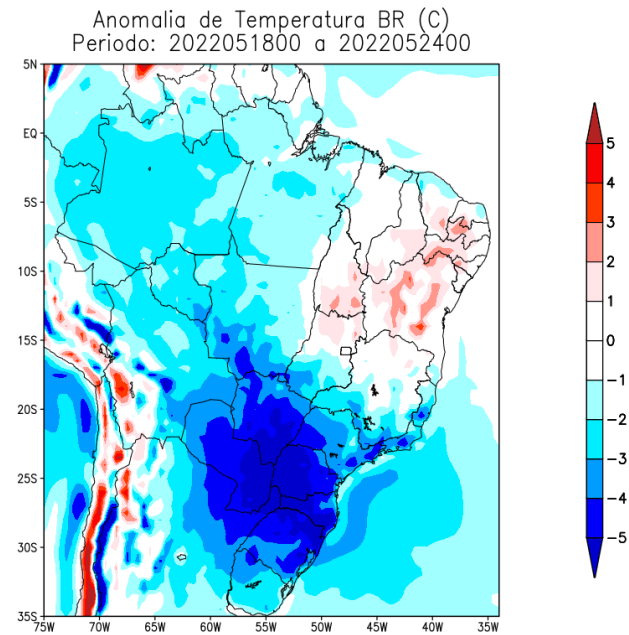
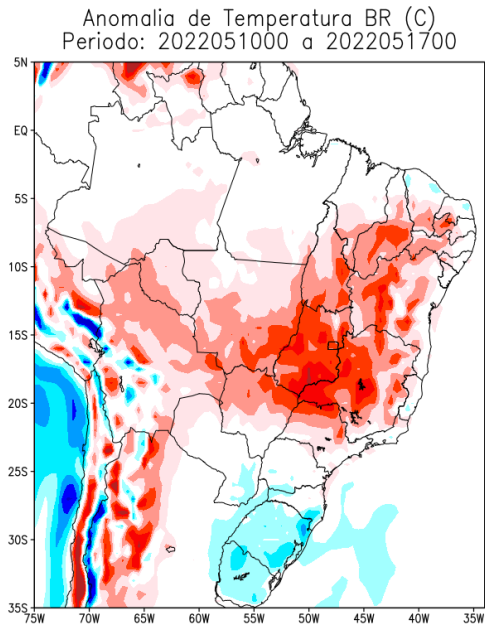
GEFS / BRASIL\_SE  
Precipitacao acumulada 14dias (mm)  
Previsao das 00Z dia 10/05/2022



Anomalia de Precipitacao BR\_SE (mm)  
Periodo: 2022051000 a 2022052400

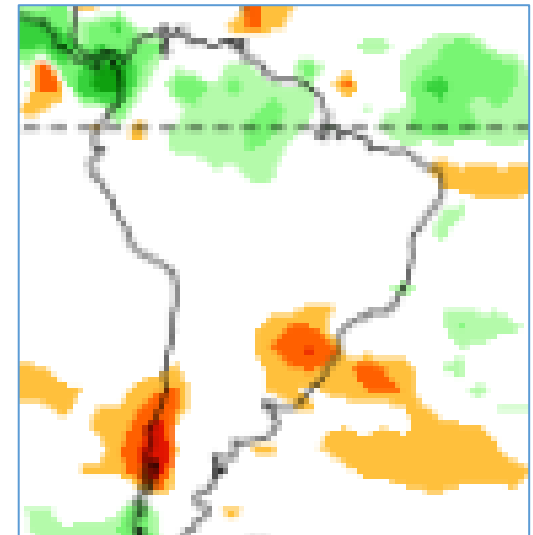
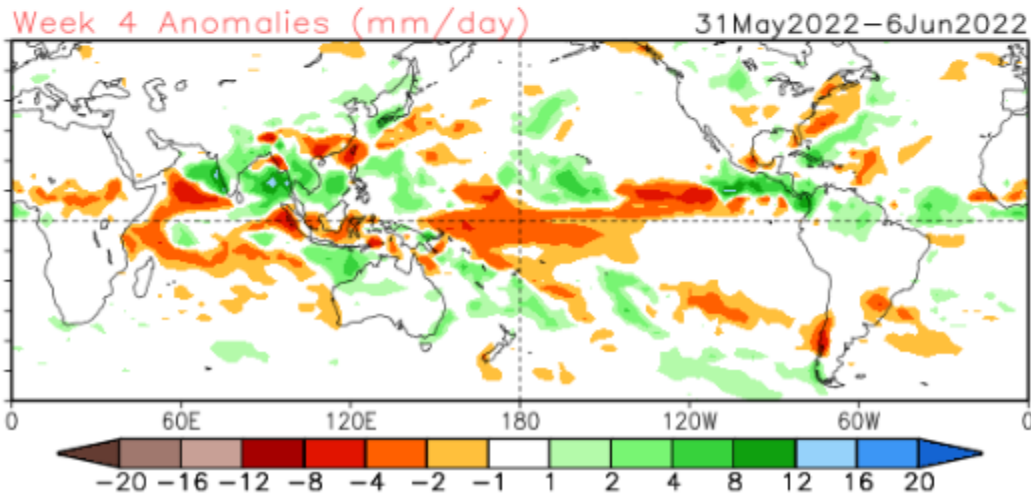
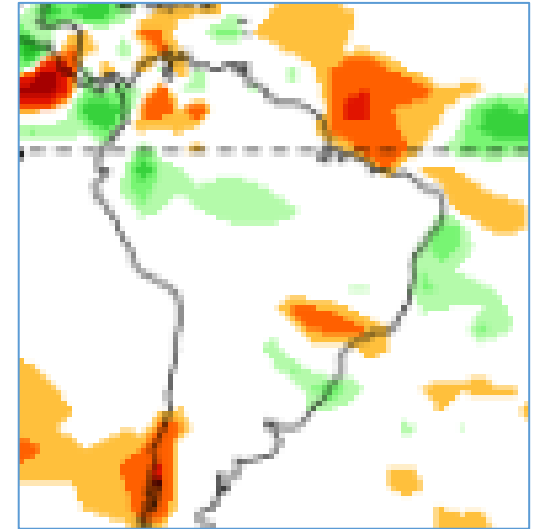
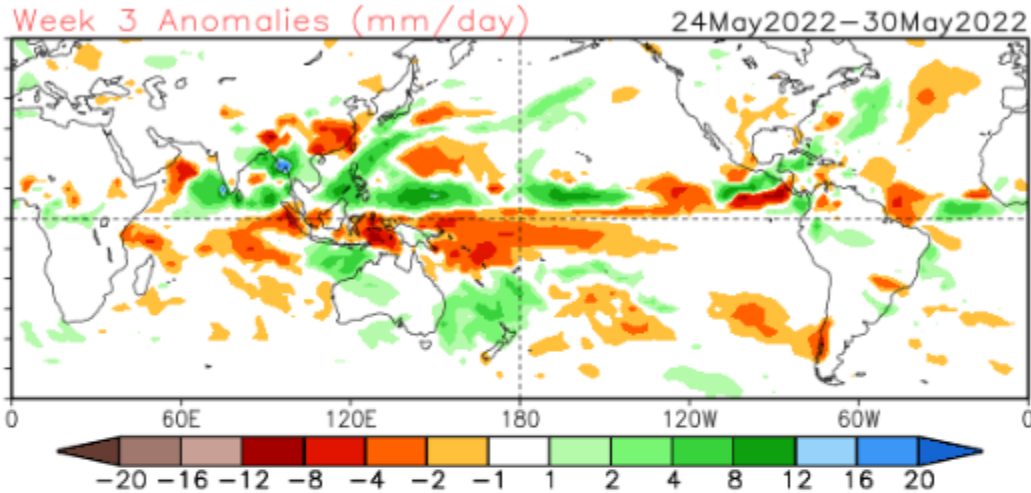


# Previsão de Temperatura para as próximas duas semanas



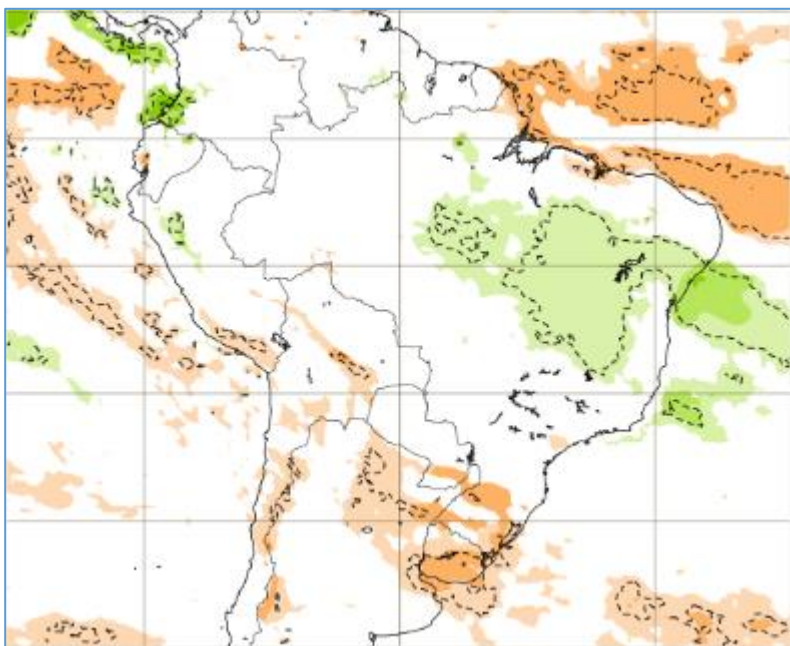
# Tendência 3a e 4a semanas

16 Member Ensemble Mean Forecast from 09May2022



# Tendência para 3ª e 4ª semanas

23-30/05



30/05-06/06

