

Monitoramento e Previsões de Chuva para a Bacia do Rio Paraíba do Sul

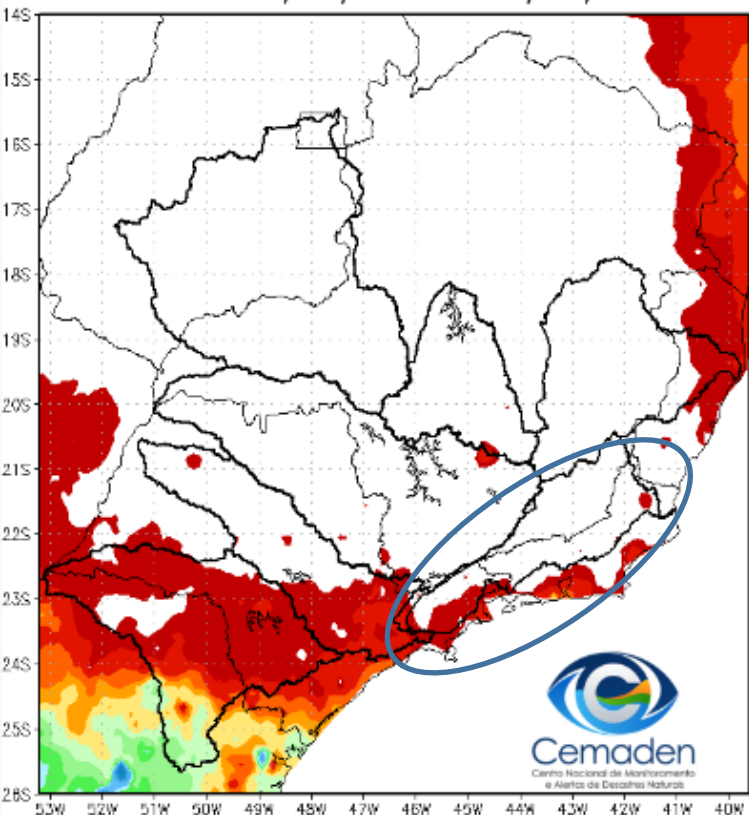


Cemaden
Centro Nacional de Monitoramento
e Alertas de Desastres Naturais

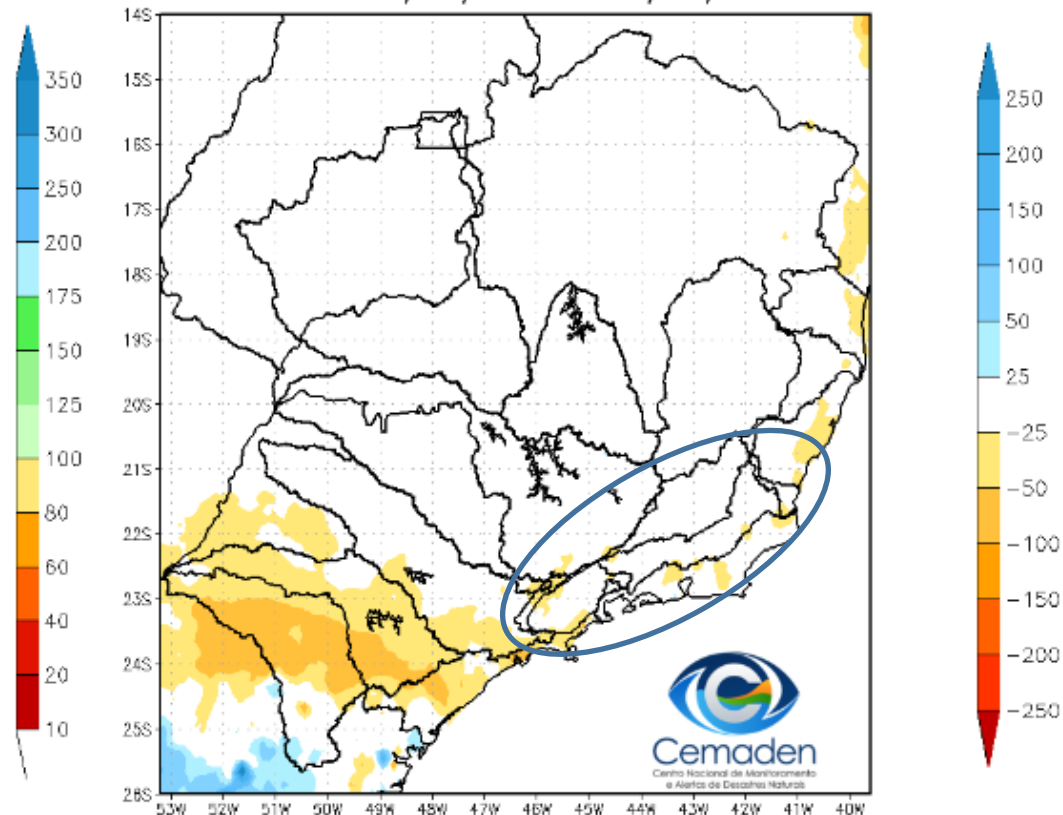
09 de Agosto de 2022

Precipitação acumulada nos últimos 30 dias

Precipitação Acumulada (mm) A.S.
Período: 09/07/2022 a 08/08/2022

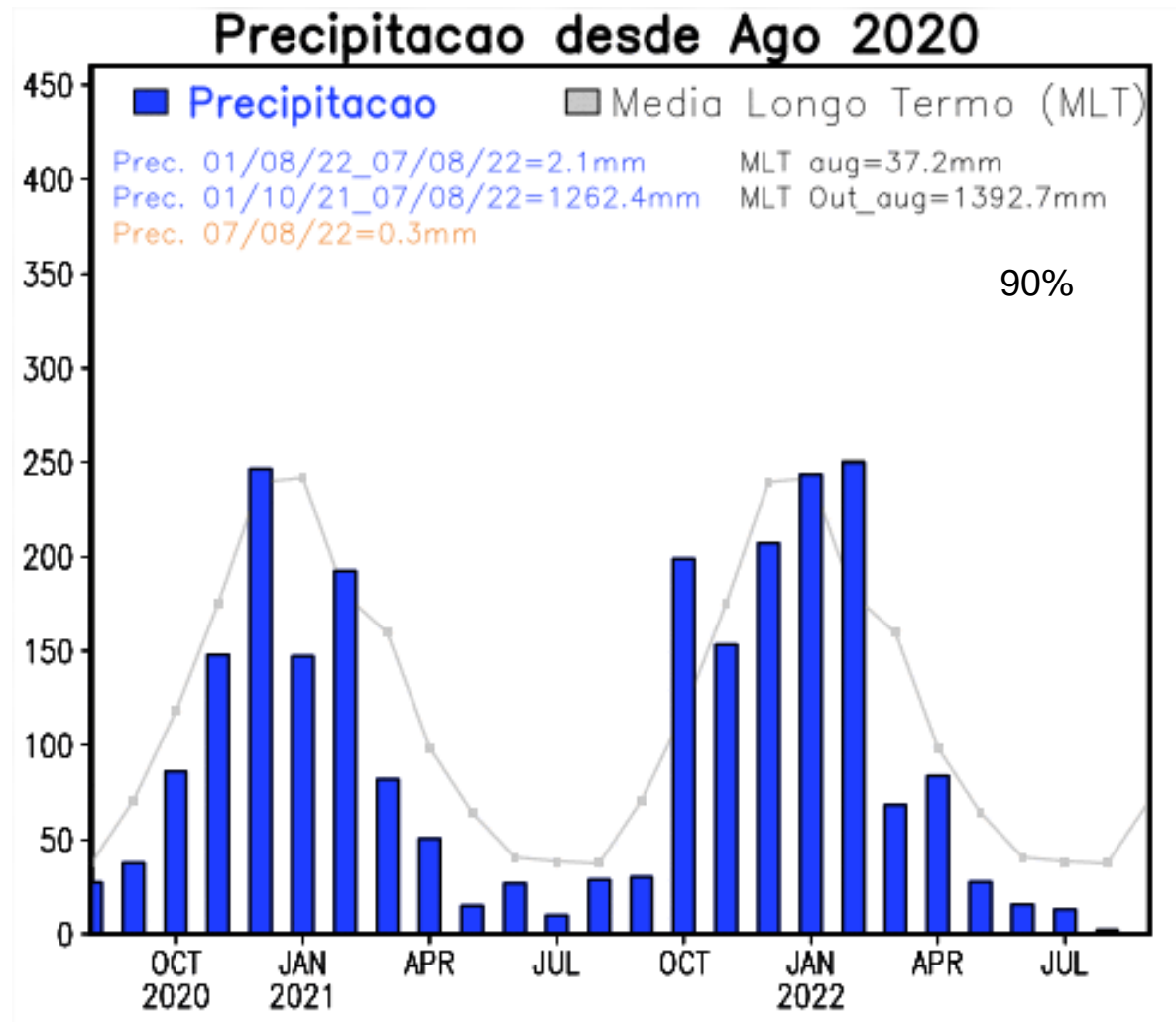


Anomalia de Precipitação (mm) A.S.
Período: 09/07/2022 a 08/08/2022

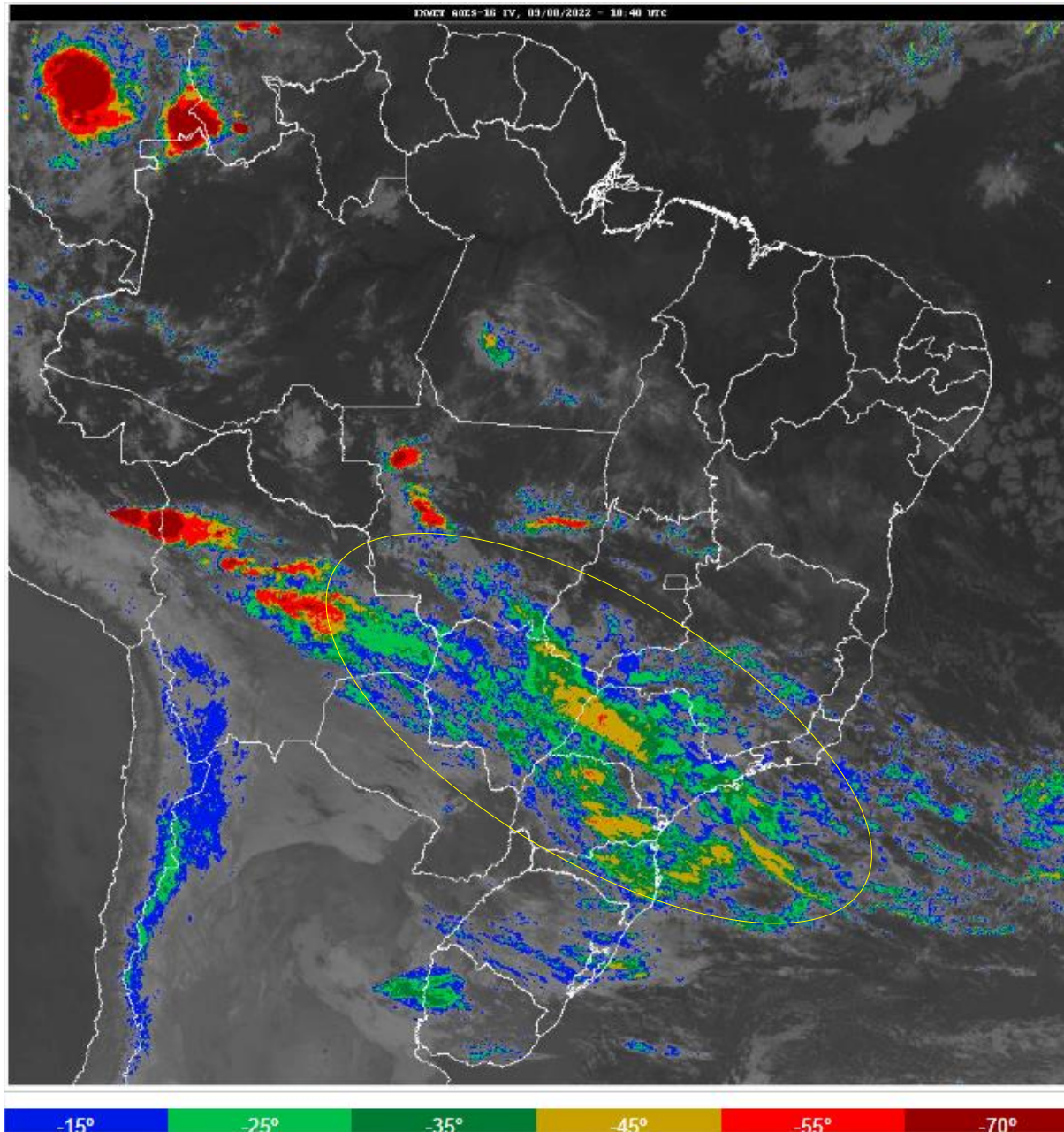


FONTE DOS DADOS INPE

Precipitação nos últimos 2 anos



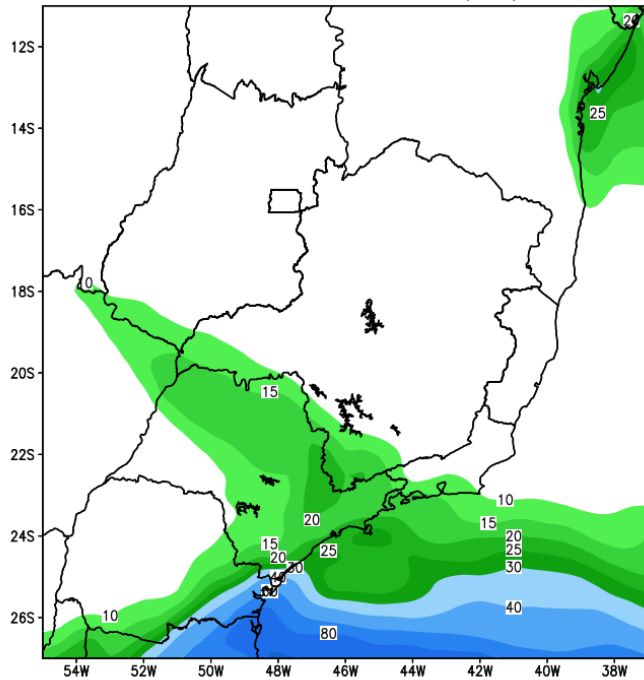
Situação meteorológica atual



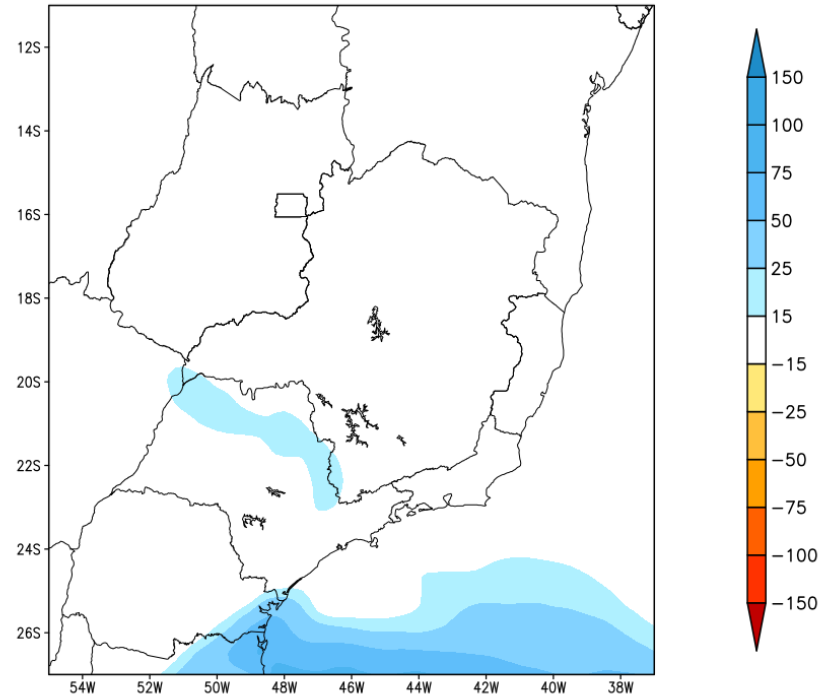
Fonte: INMET

Previsão de chuva para os próximos 7 dias

GEFS / BRASIL_SE
Precipitacao acumulada 1aSem (mm)
Previsao das 00Z dia 09/08/2022

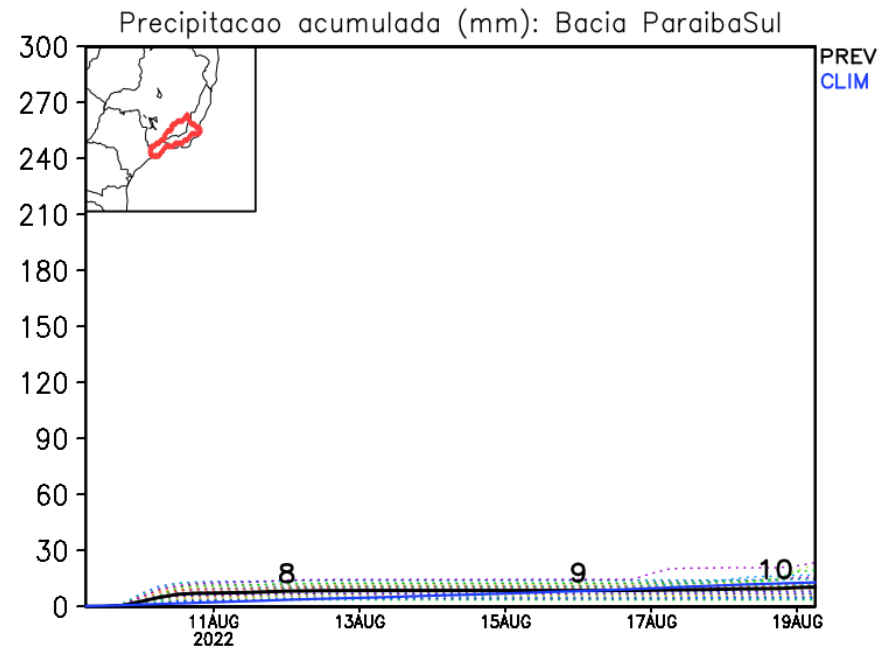
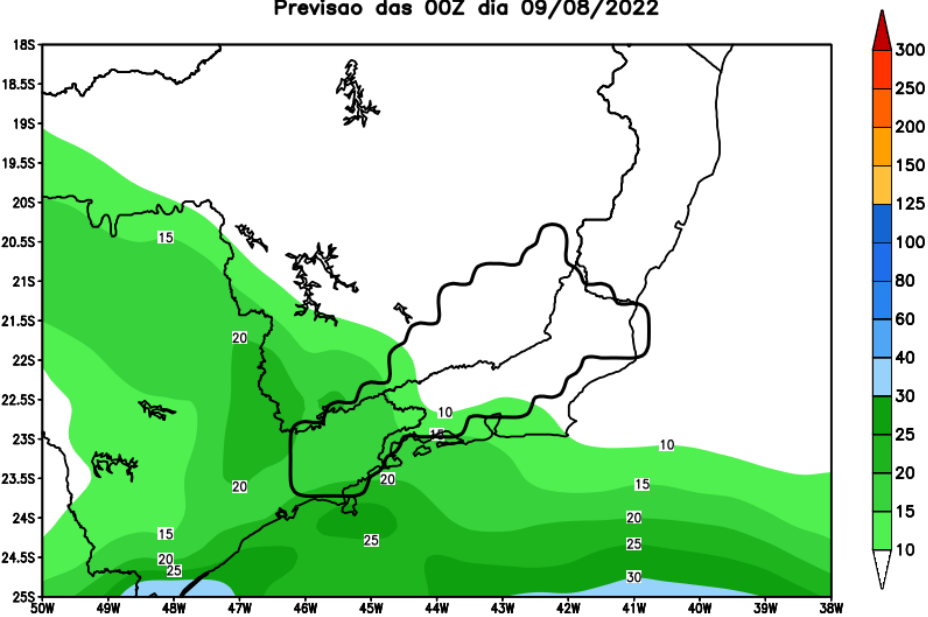


Anomalia de Precipitacao BR_SE (mm)
Periodo: 2022080900 a 2022081600



Rio Paraíba do Sul

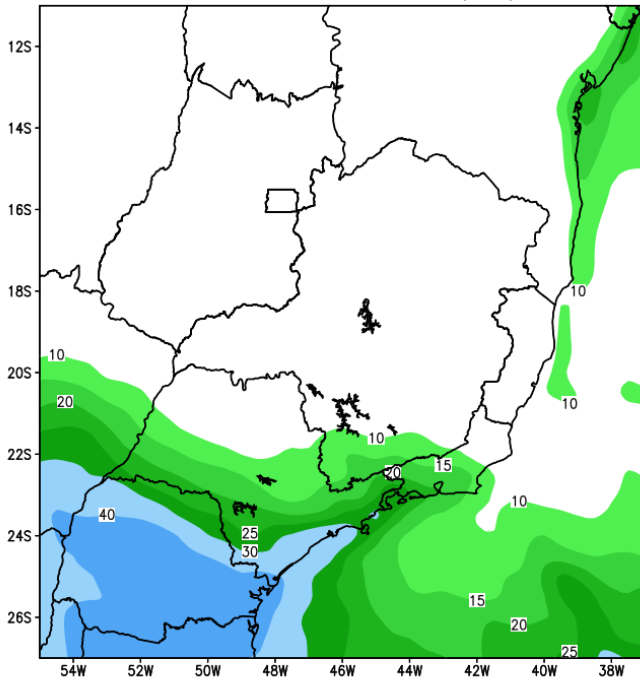
GEFS / Bacia do Rio Paraíba do Sul
Precipitação acumulada em 7 dias (mm)
Previsão das 00Z dia 09/08/2022



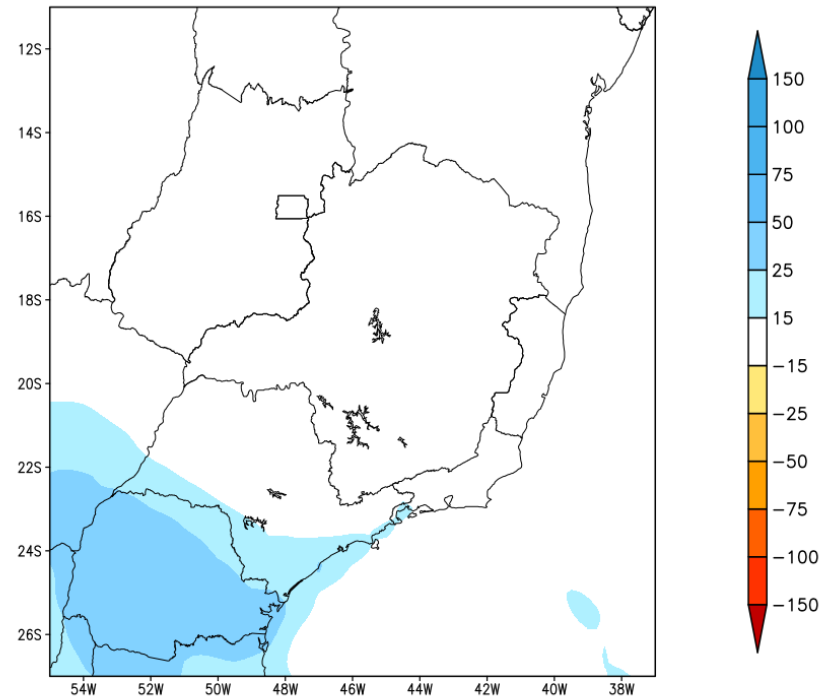
Modelo GFS/NOAA

Tendência para a 2a semana

GEFS / BRASIL_SE
Precipitacao acumulada 2aSem (mm)
Previsao das 00Z dia 09/08/2022

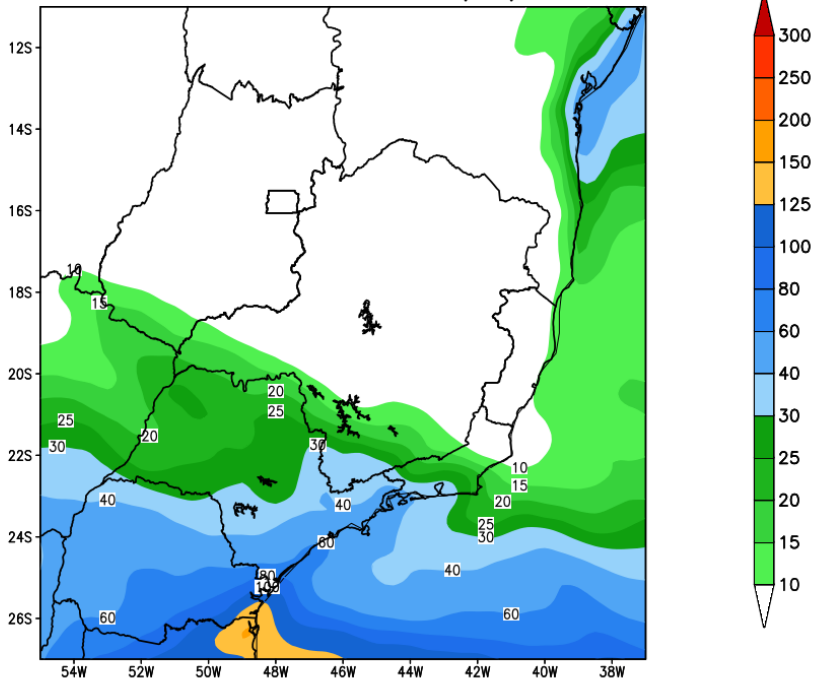


Anomalia de Precipitacao BR_SE (mm)
Periodo: 2022081700 a 2022082300

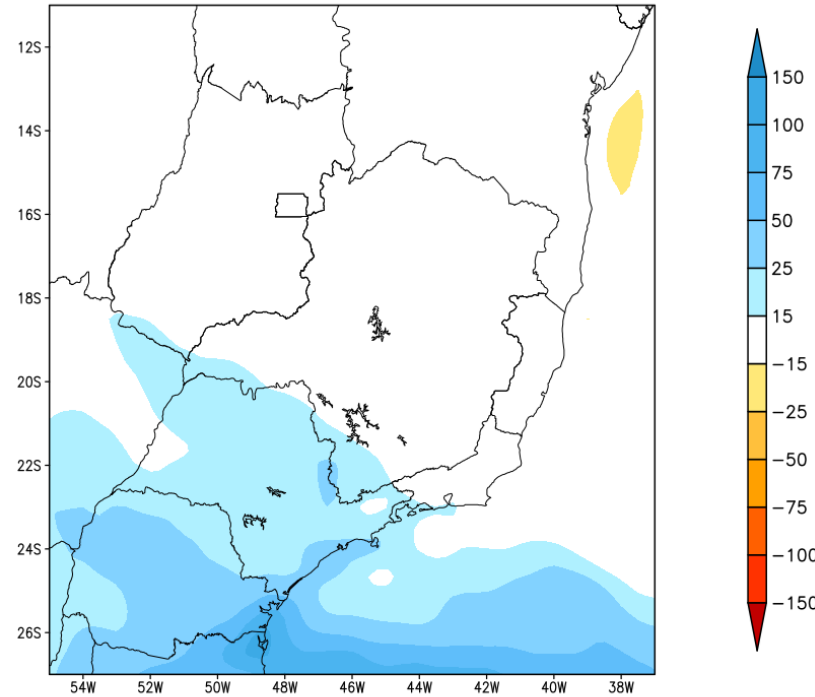


Tendência para as próximas duas semanas

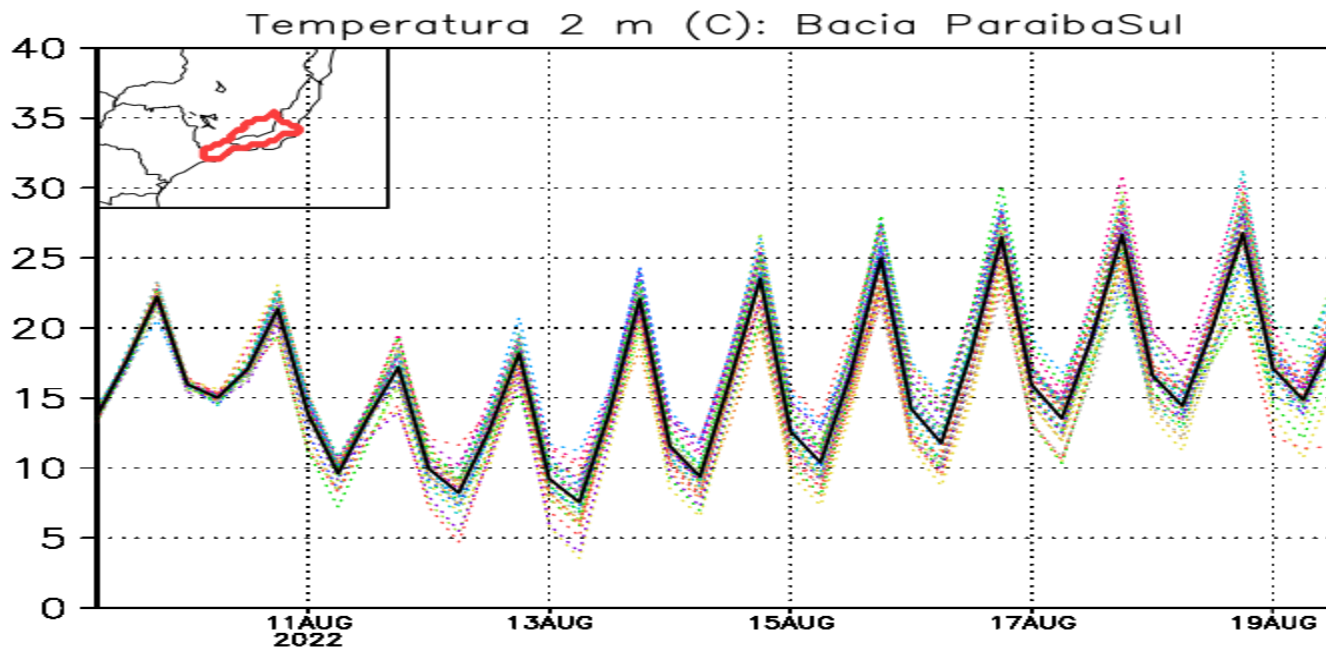
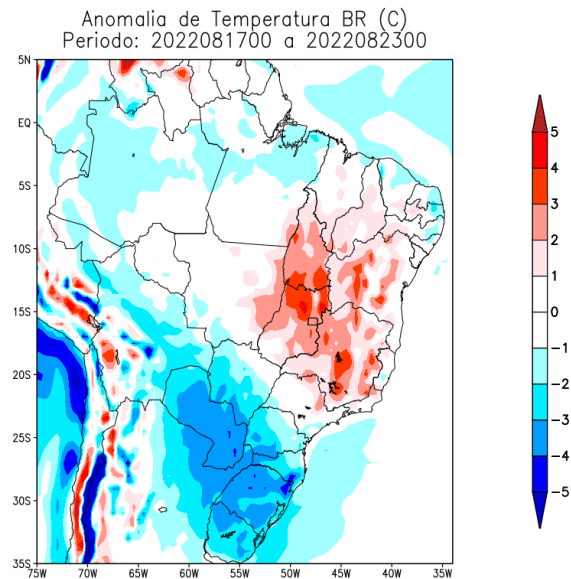
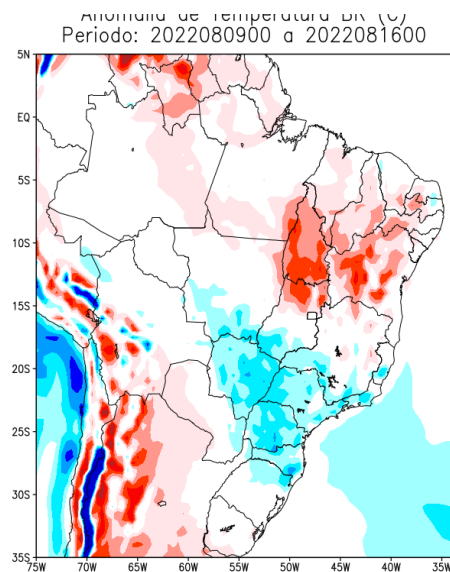
GEFS / BRASIL_SE
Precipitacao acumulada 14dias (mm)
Previsao das 00Z dia 09/08/2022



Anomalia de Precipitacao BR_SE (mm)
Periodo: 2022080900 a 2022082300

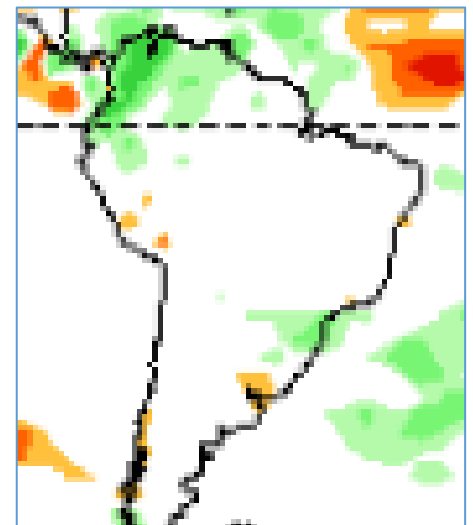
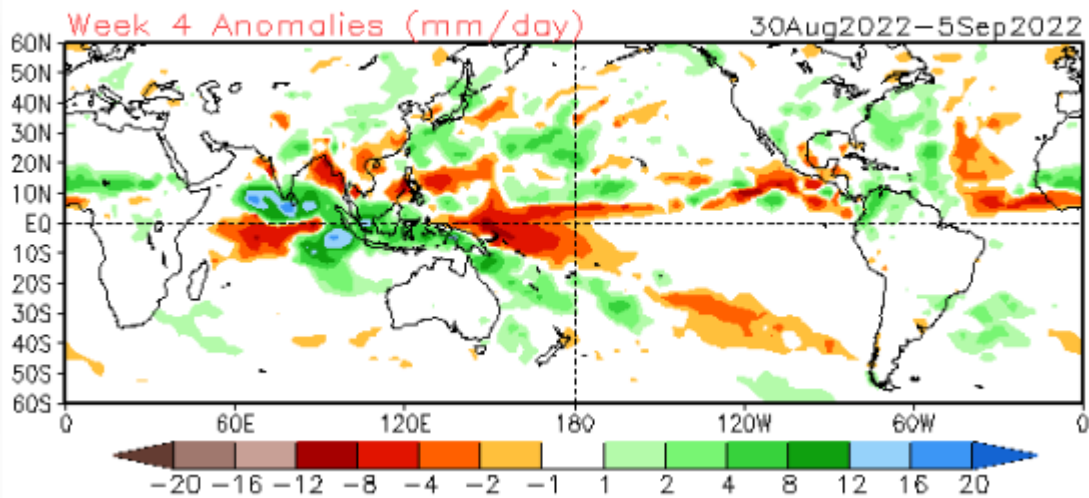
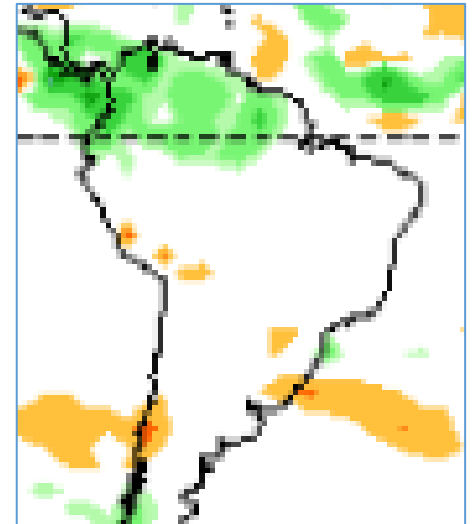
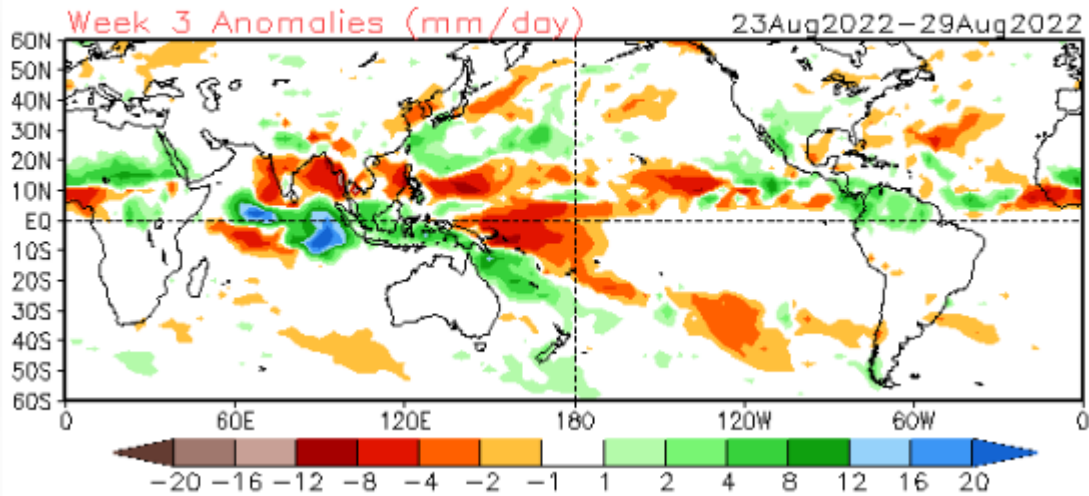


Previsão de Temperatura para as próximas duas semanas



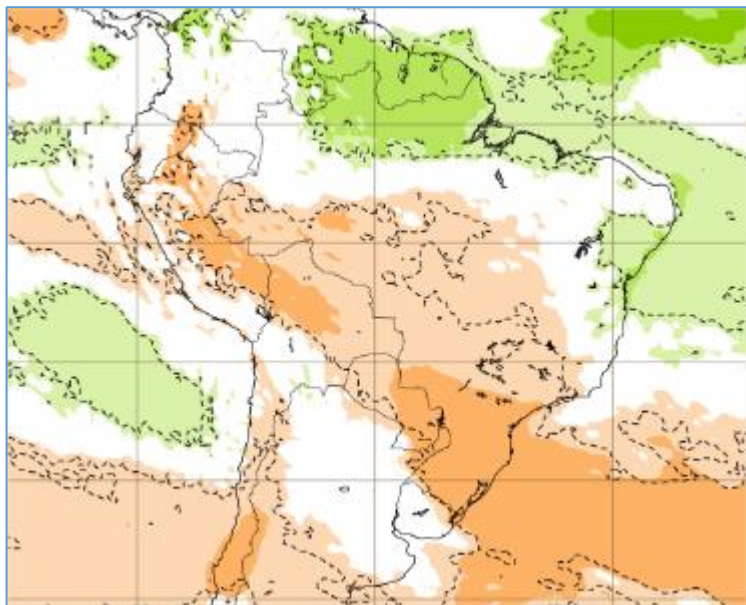
Tendência 3a e 4a semanas

16 Member Ensemble Mean Forecast from 08Aug2022



Tendência para 3ª e 4ª semanas

22-29/08



28/08-05/09

