

Monitoramento e Previsões de Chuva para a Bacia do Rio Paraíba do Sul

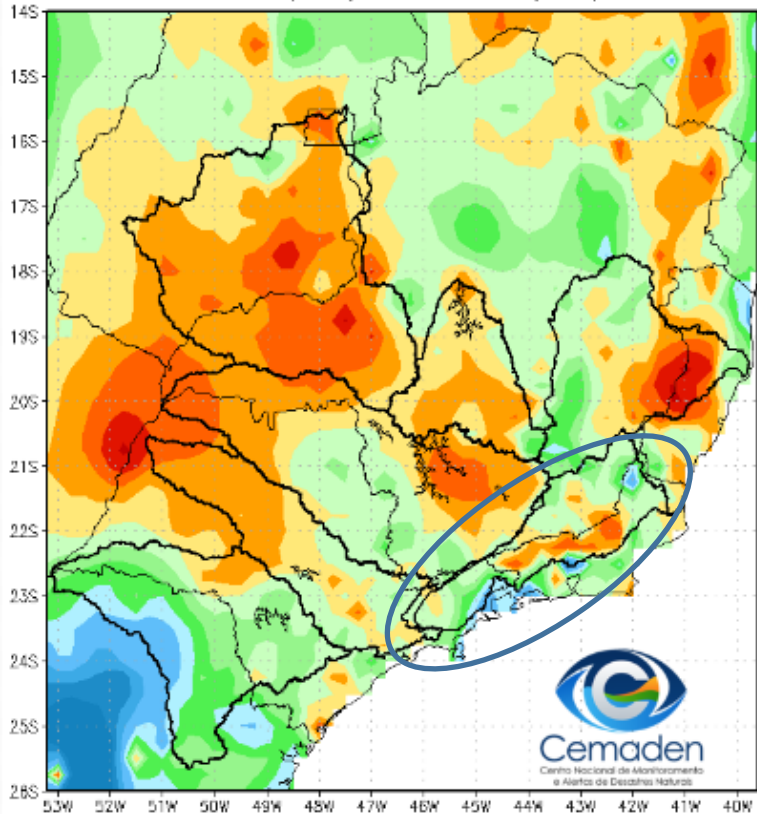


Cemaden
Centro Nacional de Monitoramento
e Alertas de Desastres Naturais

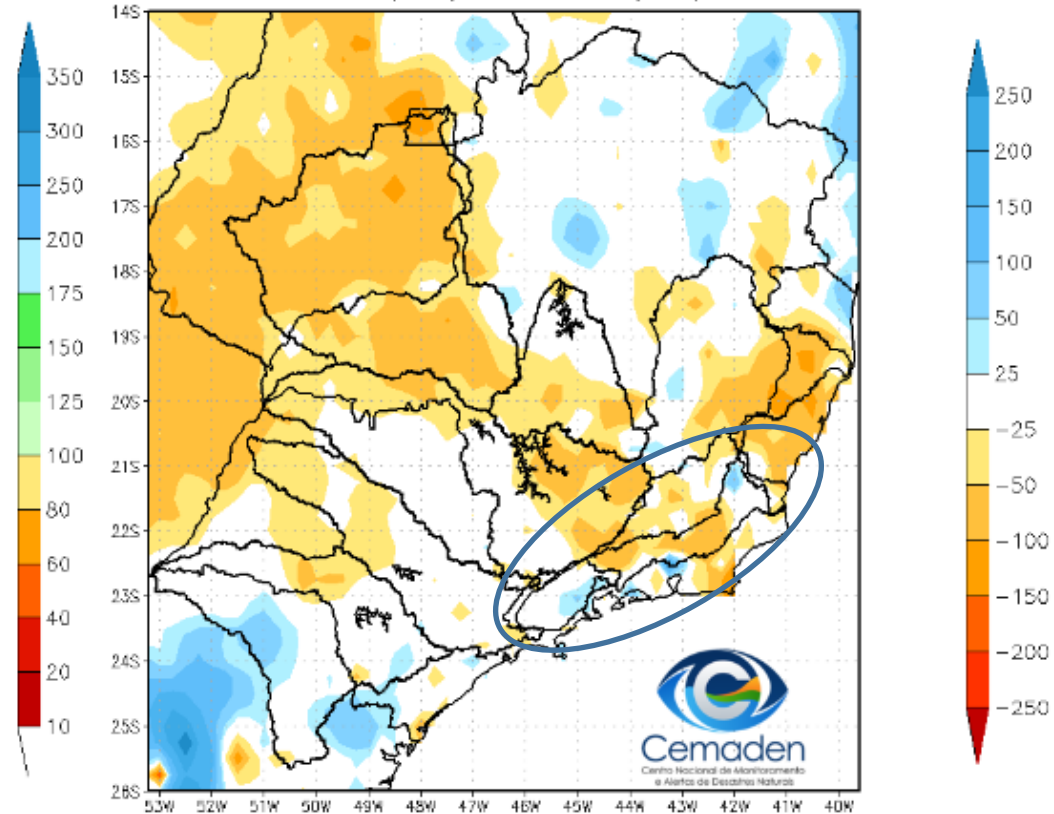
08 de Novembro de 2022

Precipitação acumulada nos últimos 30 dias

Precipitação Acumulada (mm) A.S.
Período: 08/10/2022 a 07/11/2022



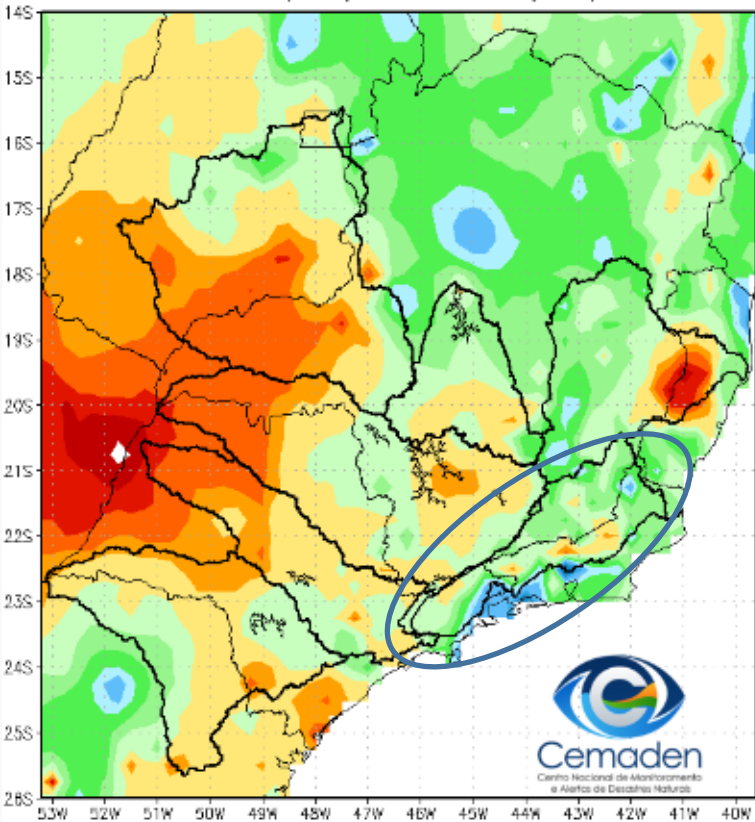
Anomalia de Precipitação (mm) A.S.
Período: 08/10/2022 a 07/11/2022



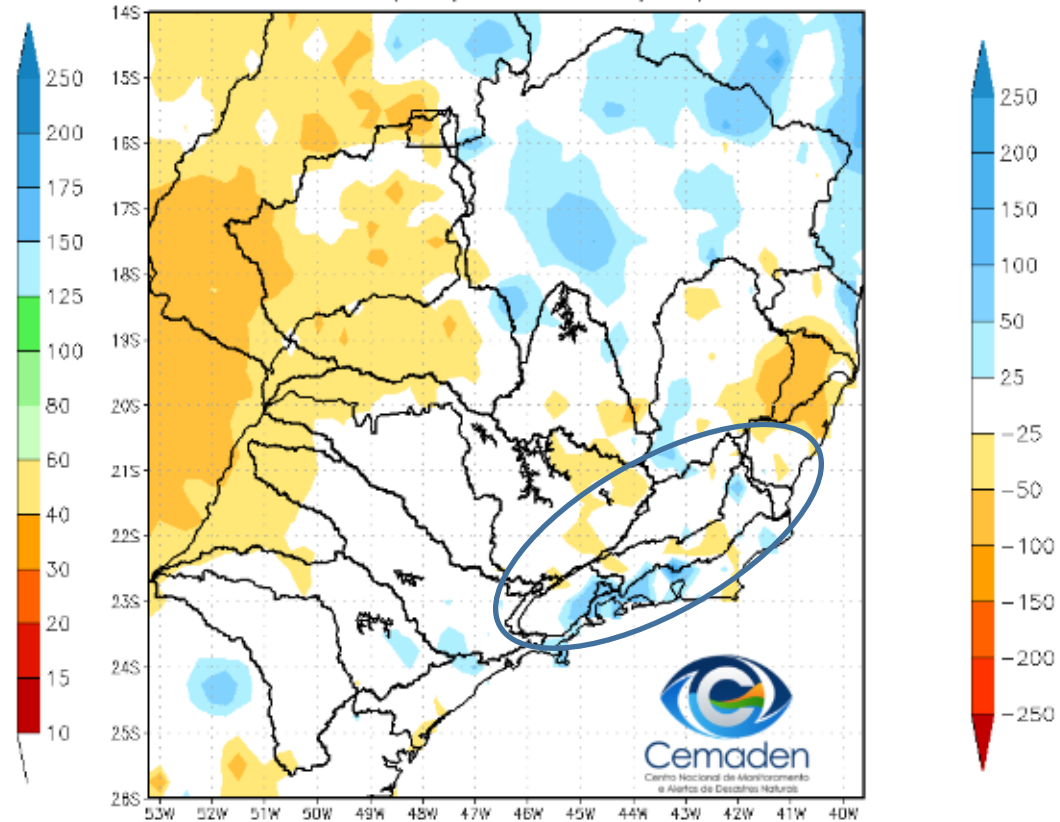
FONTE DOS DADOS INPE

Precipitação acumulada nos últimos 15 dias

Precipitação Acumulada (mm) A.S.
Período: 23/10/2022 a 07/11/2022



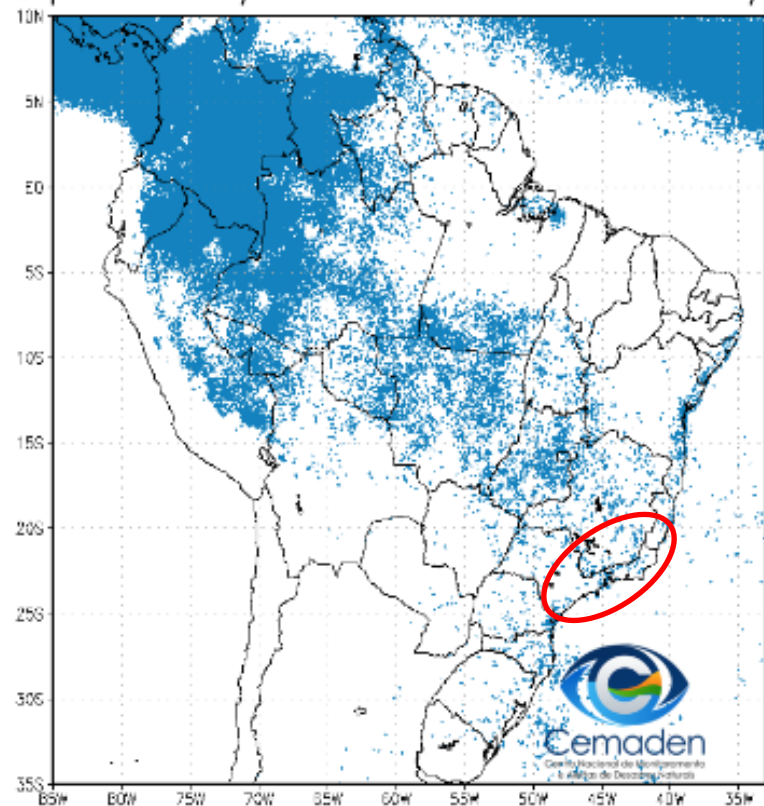
Anomalia de Precipitação (mm) A.S.
Período: 23/10/2022 a 07/11/2022



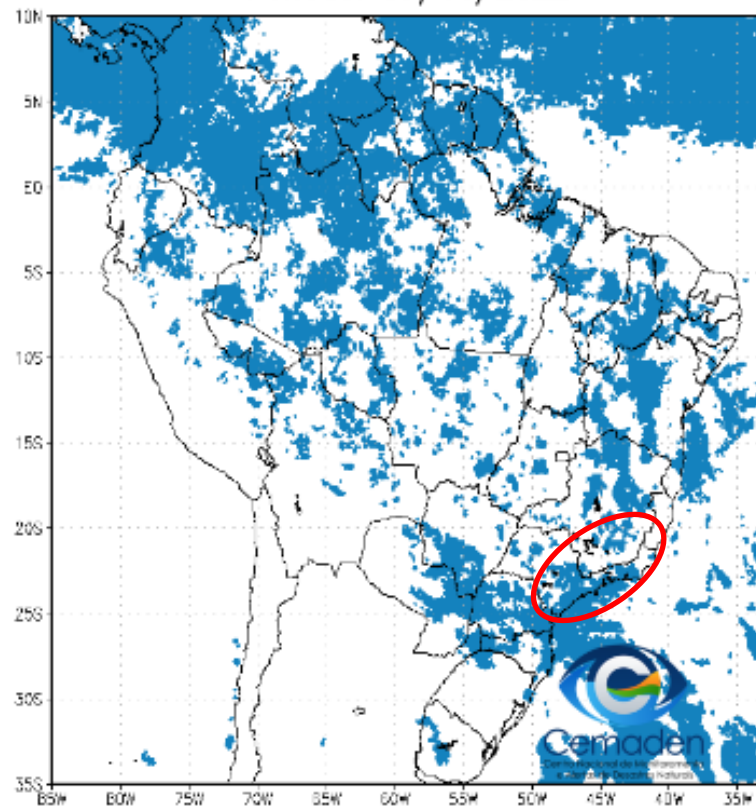
FONTE DOS DADOS INPE

Andamento da Estação chuvosa

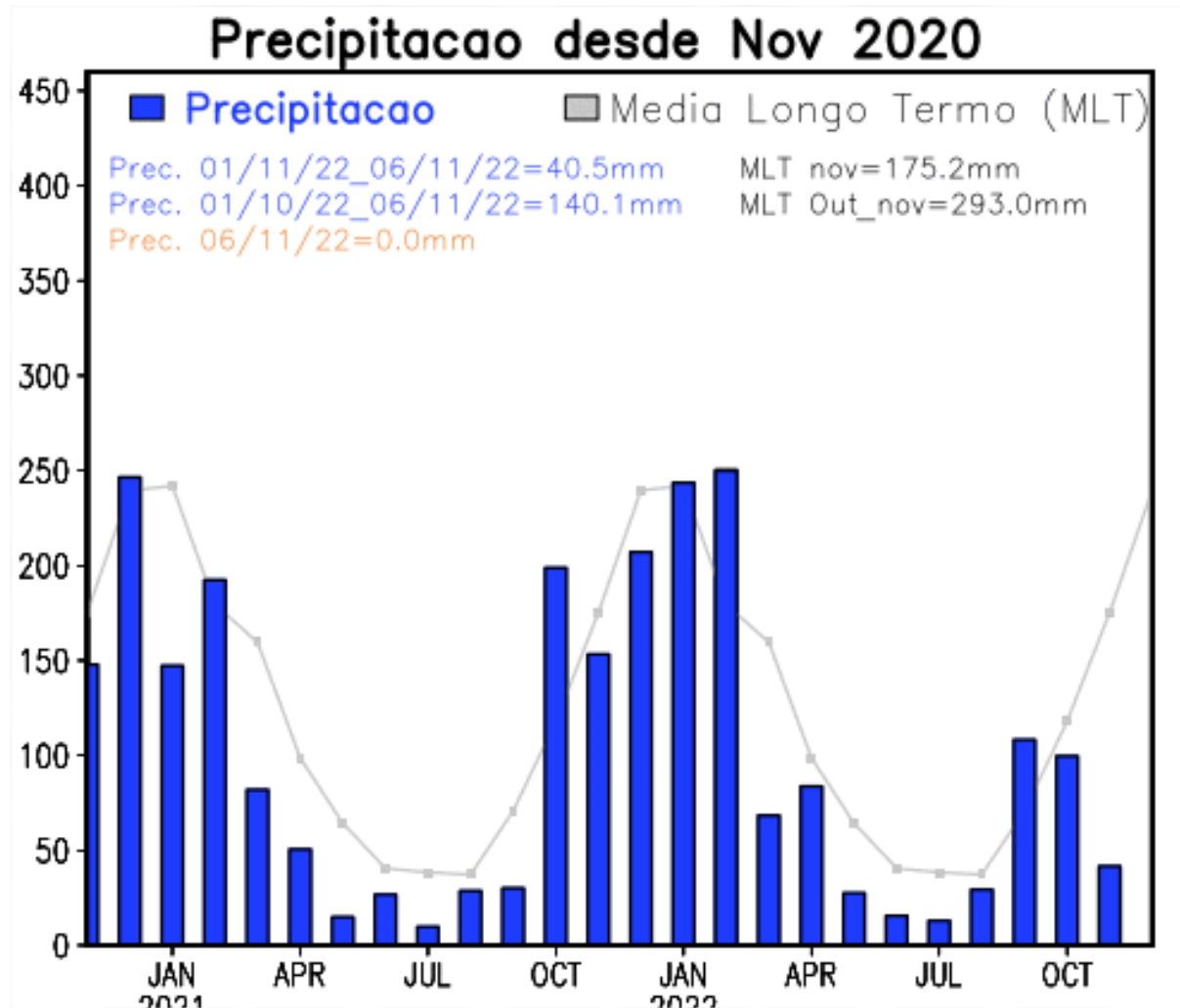
Climatologia da Precipitacao (2001-2020)
Superior 3 mm/dia em 4 de 5 dias Período: 07/11



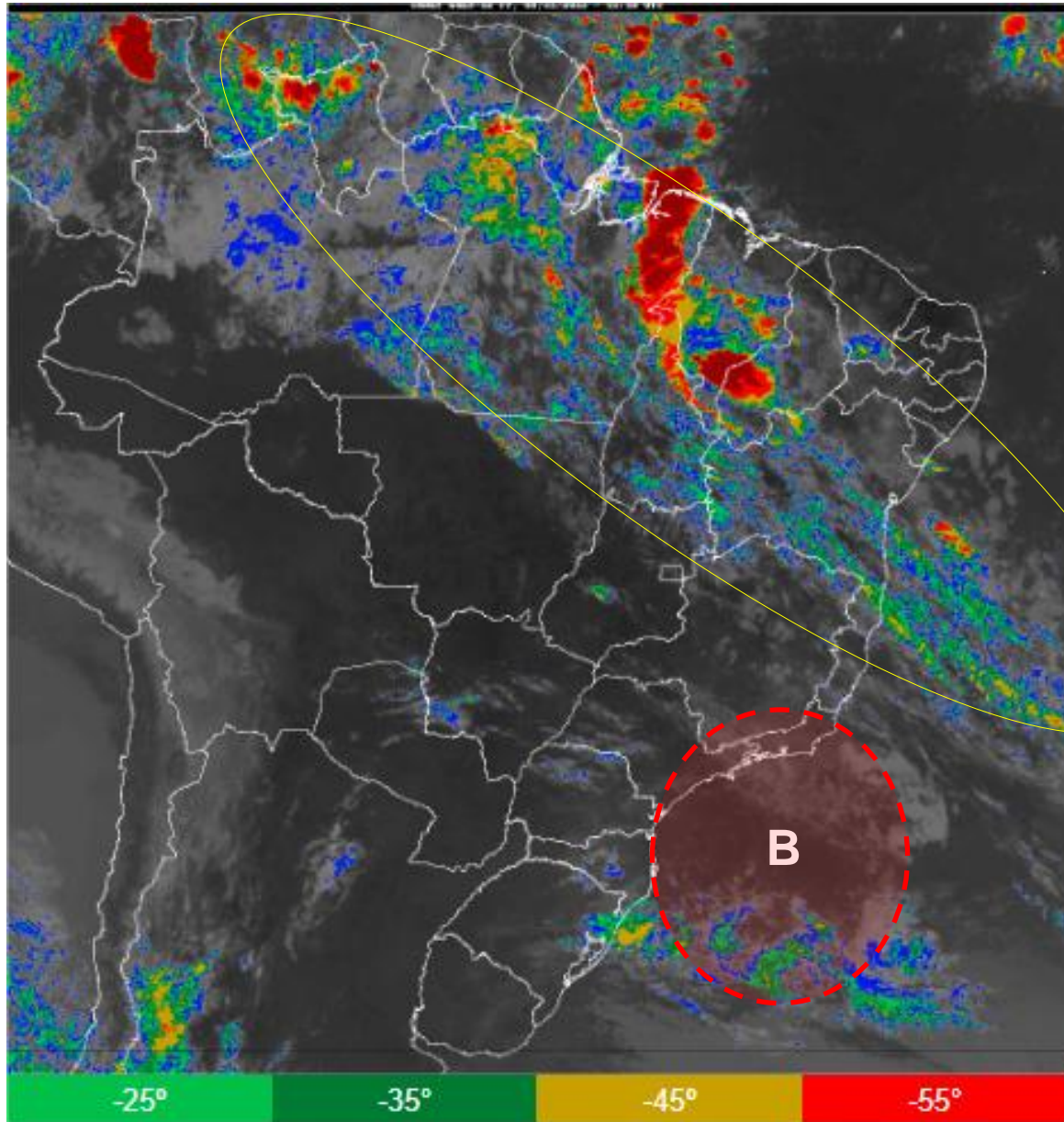
Precipitacao A.S. Superior a 3 mm/dia por 4 de 5 dias
Período: 07/11/2022



Precipitação nos últimos 2 anos

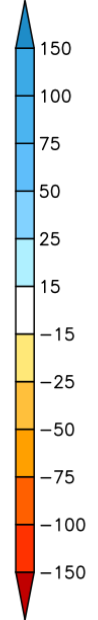
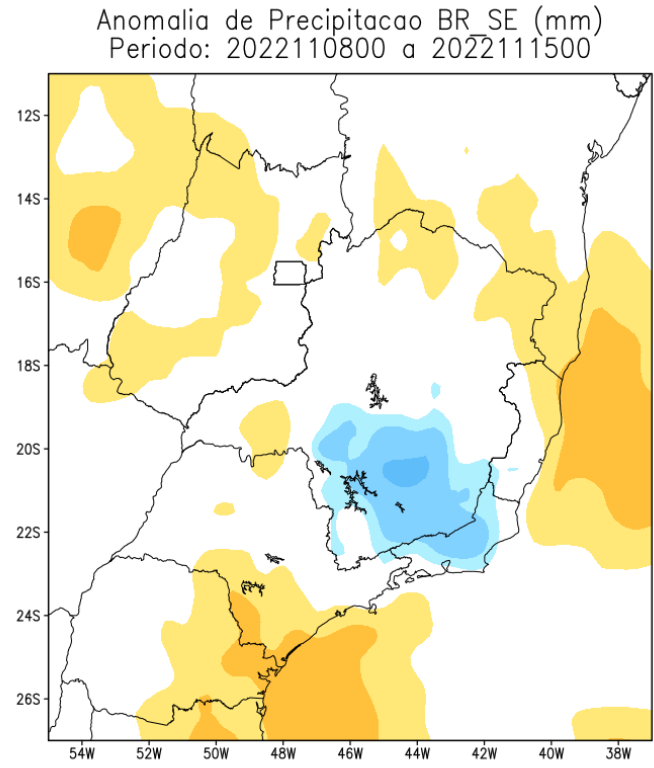
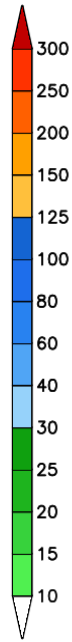
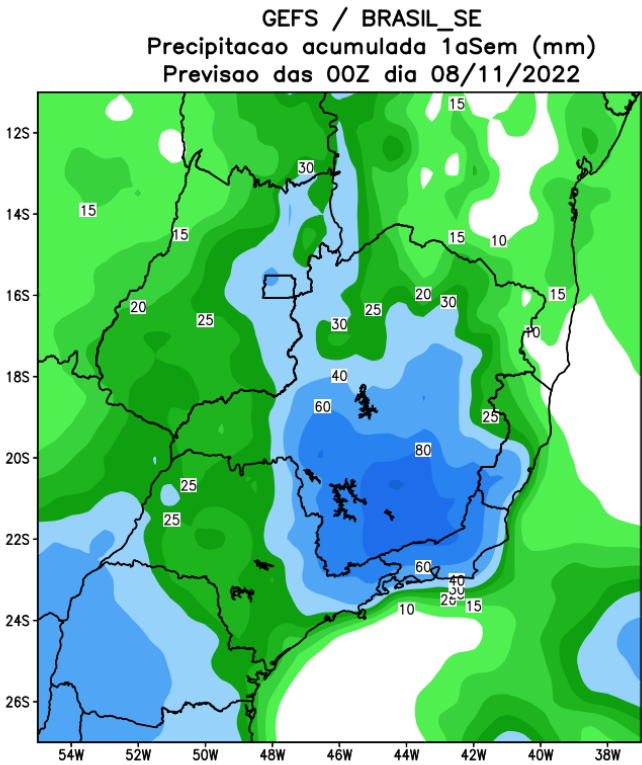


Situação meteorológica atual



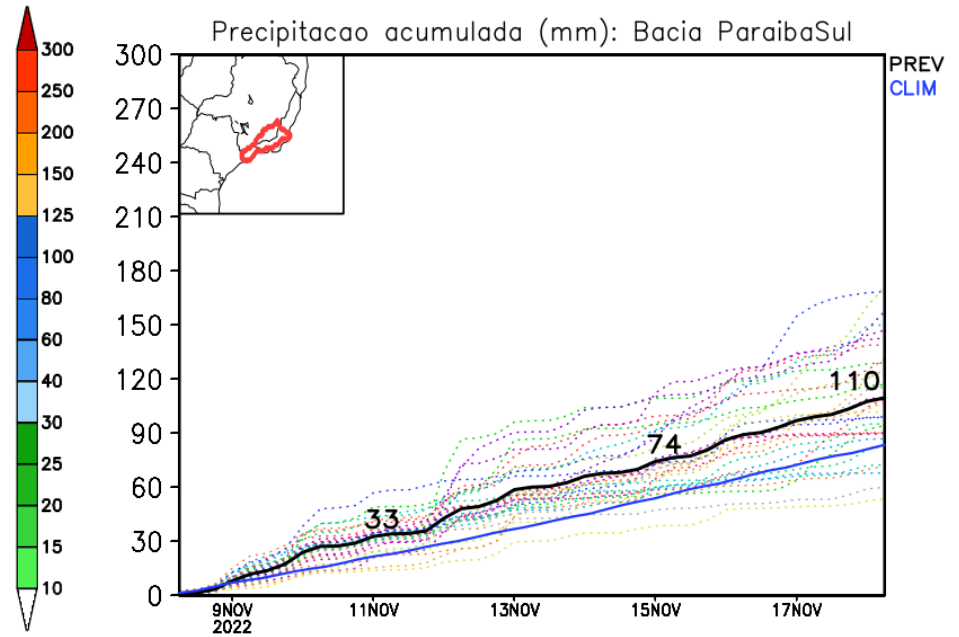
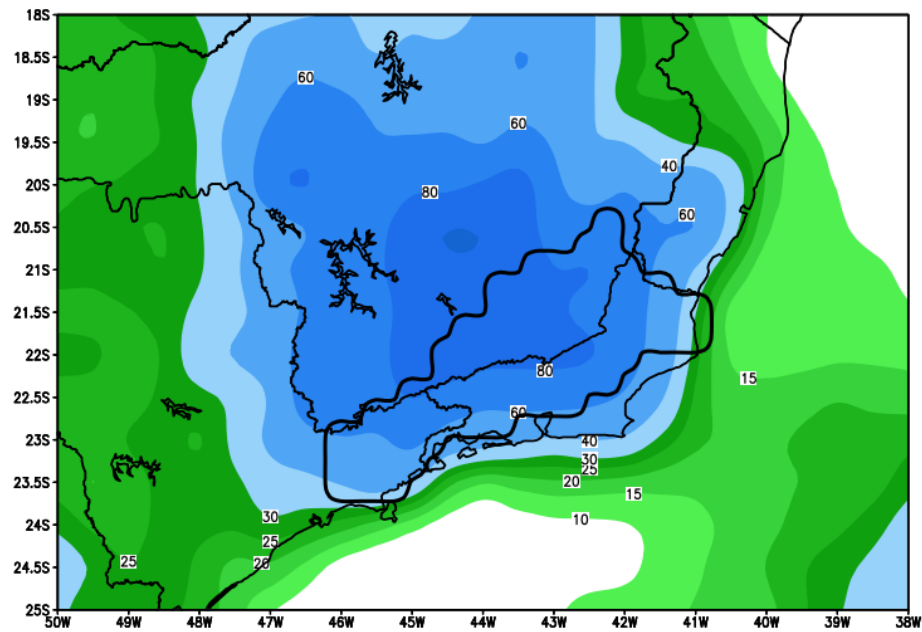
Fonte: INMET

Previsão de chuva para os próximos 7 dias



Rio Paraíba do Sul

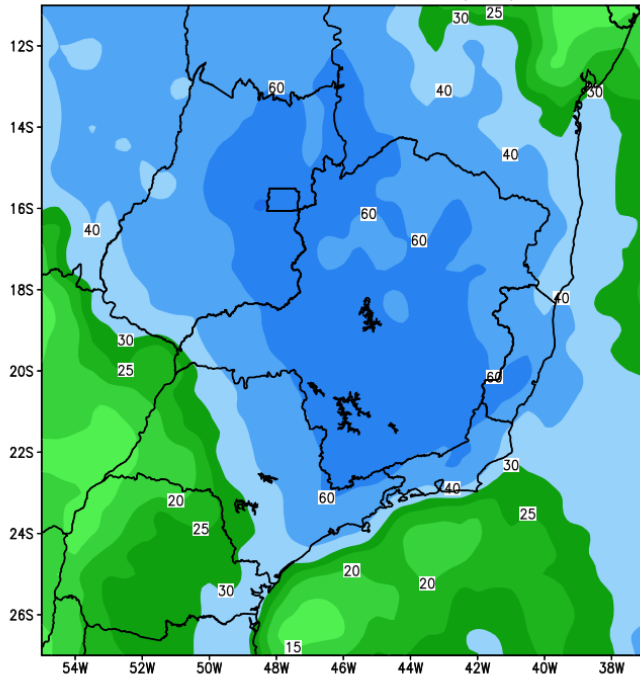
GEFS / Bacia do Rio Paraíba do Sul
Precipitacao acumulada em 7 dias (mm)
Previsao das 00Z dia 08/11/2022



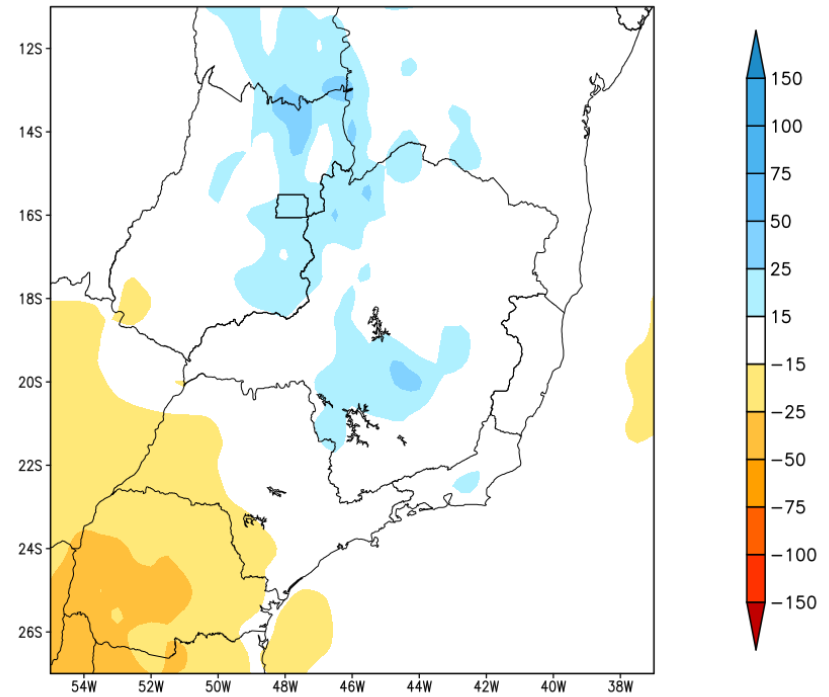
Modelo GFS/NOAA

Tendência para a 2a semana

GEFS / BRASIL_SE
Precipitacao acumulada 2aSem (mm)
Previsao das 00Z dia 08/11/2022

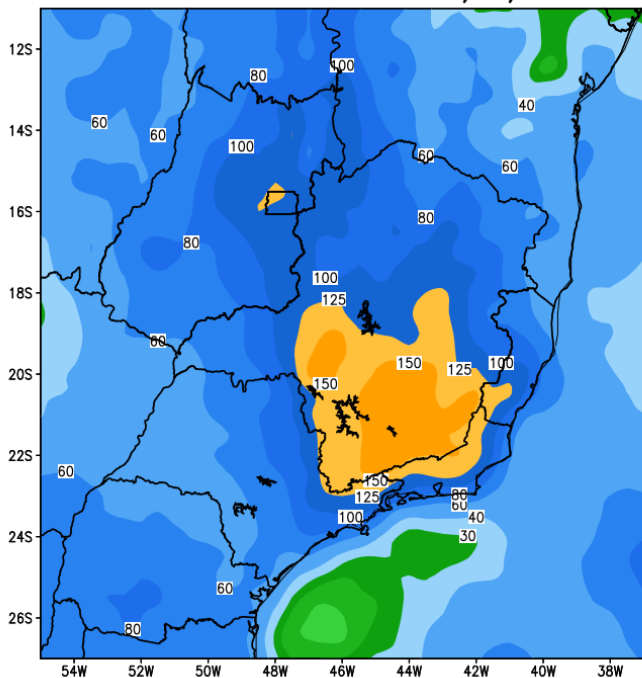


Anomalia de Precipitacao BR_SE (mm)
Periodo: 2022111600 a 2022112200

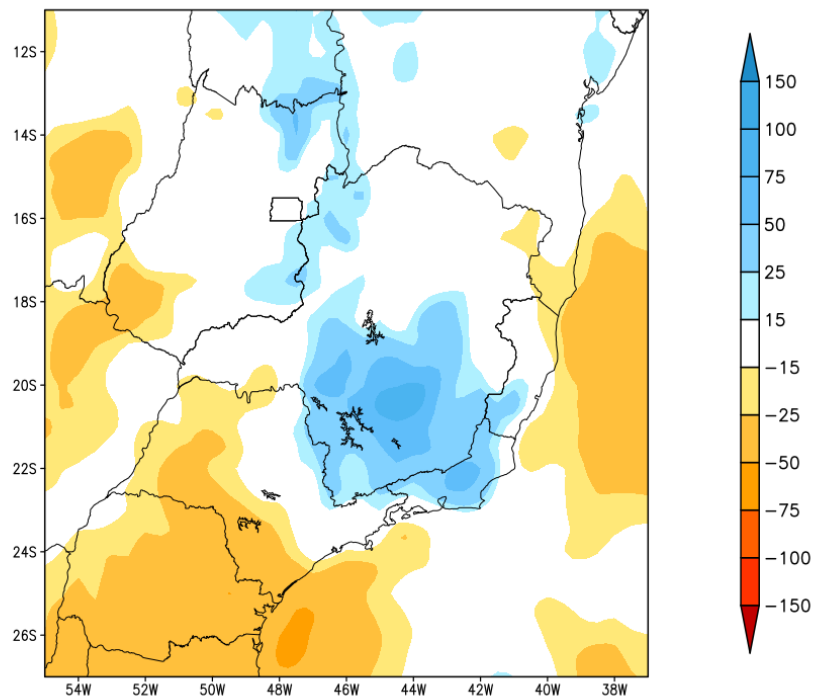


Tendência para as próximas duas semanas

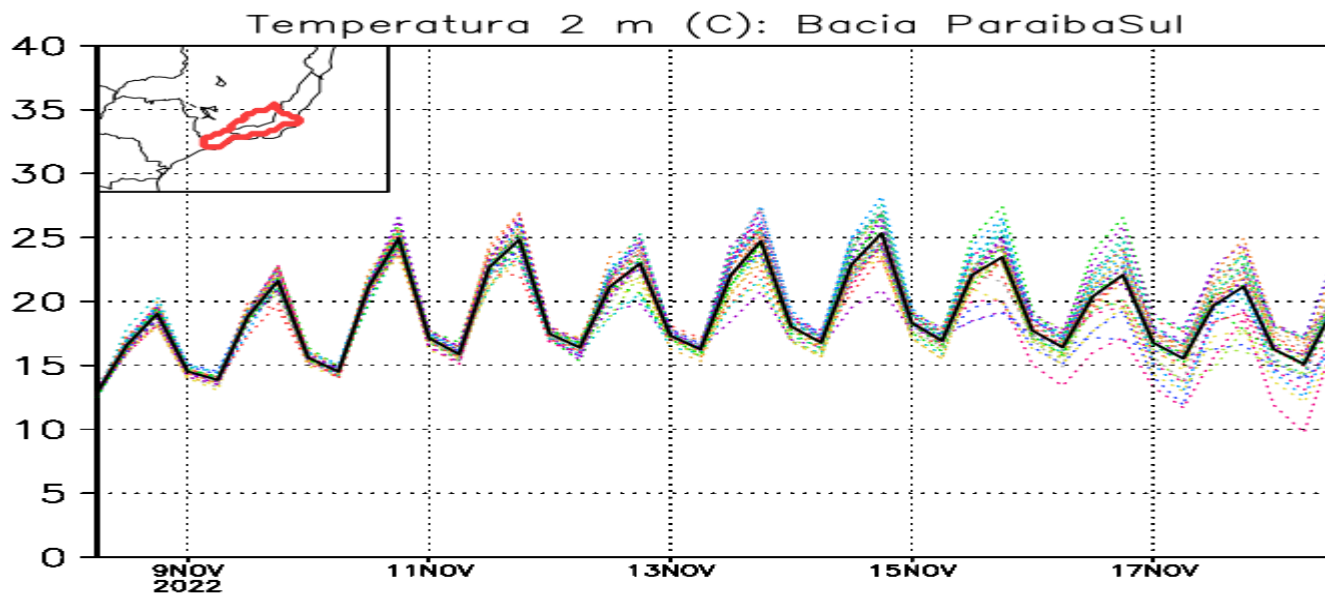
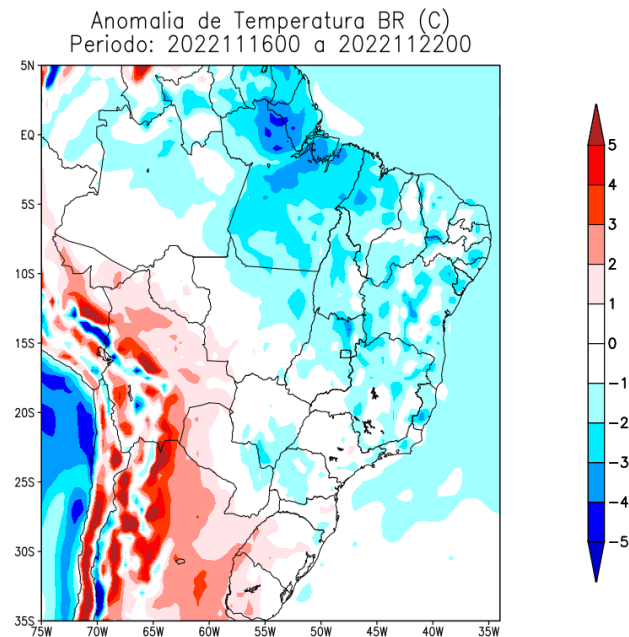
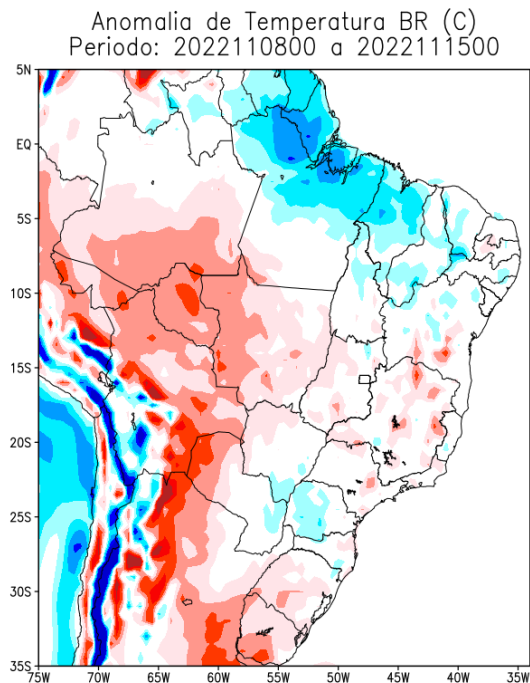
GEFS / BRASIL_SE
Precipitacao acumulada 14dias (mm)
Previsao das 00Z dia 08/11/2022



Anomalia de Precipitacao BR SE (mm)
Periodo: 2022110800 a 2022112200



Previsão de Temperatura para as próximas duas semanas

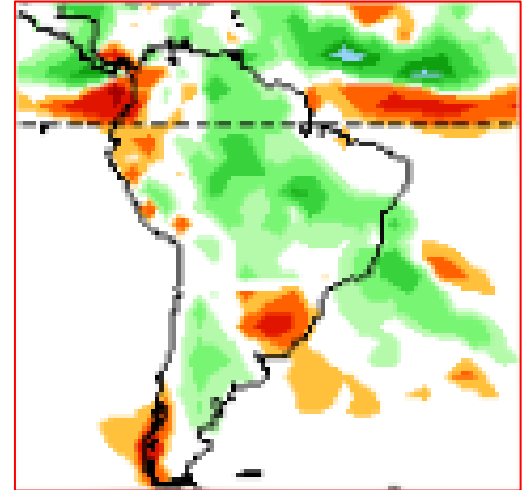
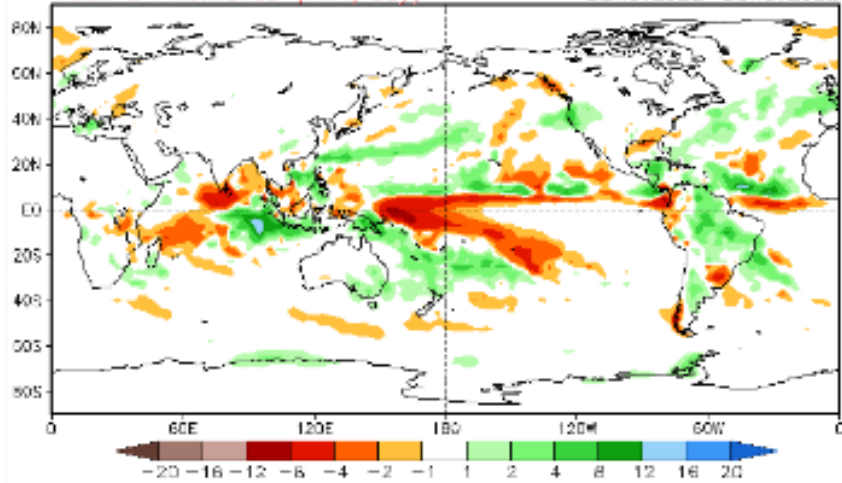


Tendência 3a e 4a semanas

13 Member Ensemble Mean Forecast from 07Nov2022

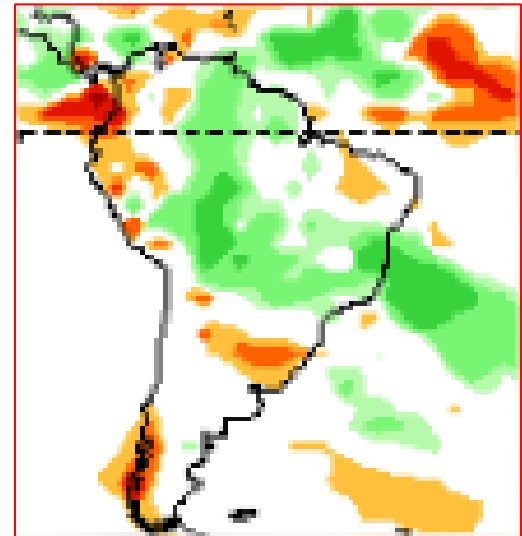
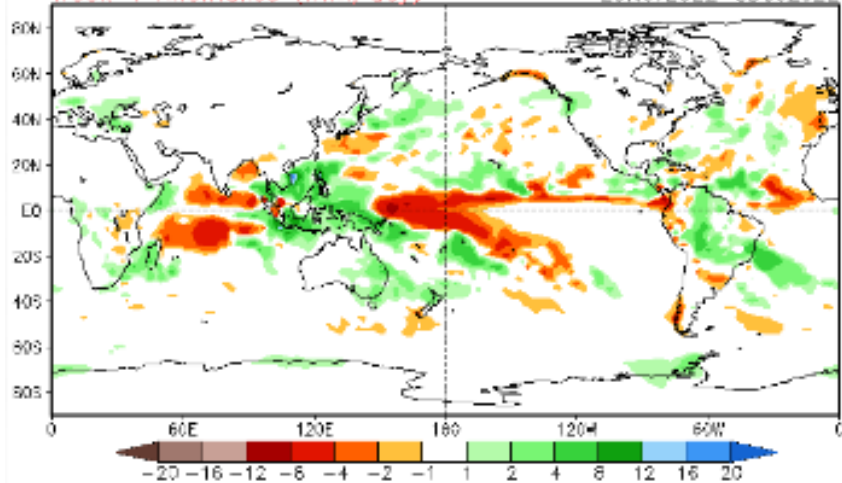
Week 3 Anomalies (mm/day)

22Nov2022 - 28Nov2022



Week 4 Anomalies (mm/day)

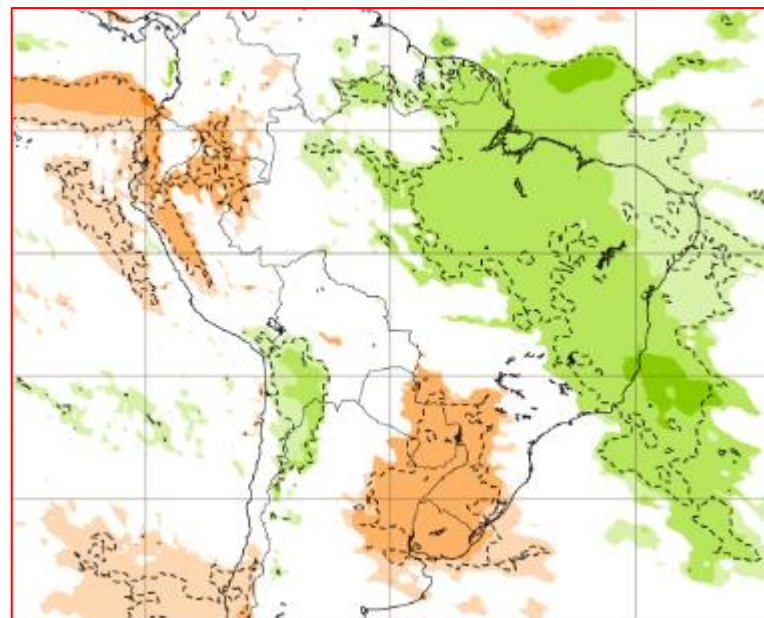
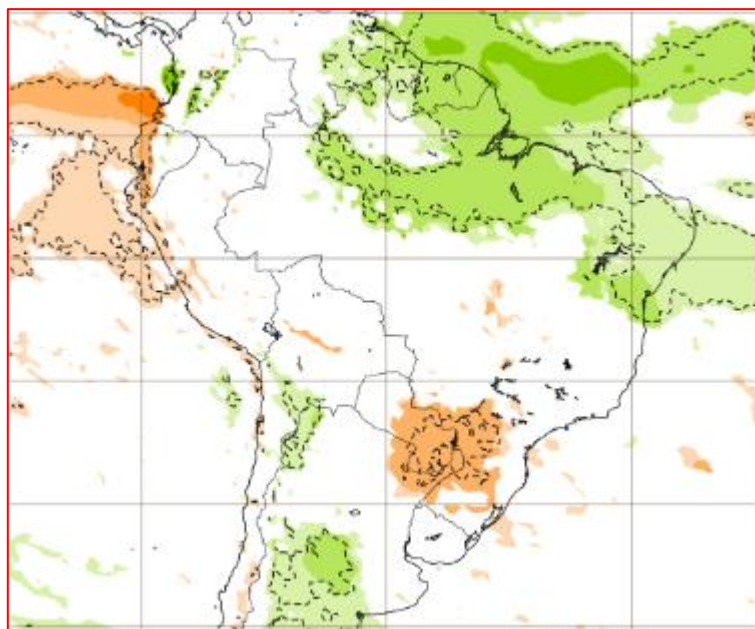
29Nov2022 - 5Dec2022



Tendência para 3ª e 4ª semanas

21-28/11

28/11-05/12



Previsão sazonal de Chuva NDJ

