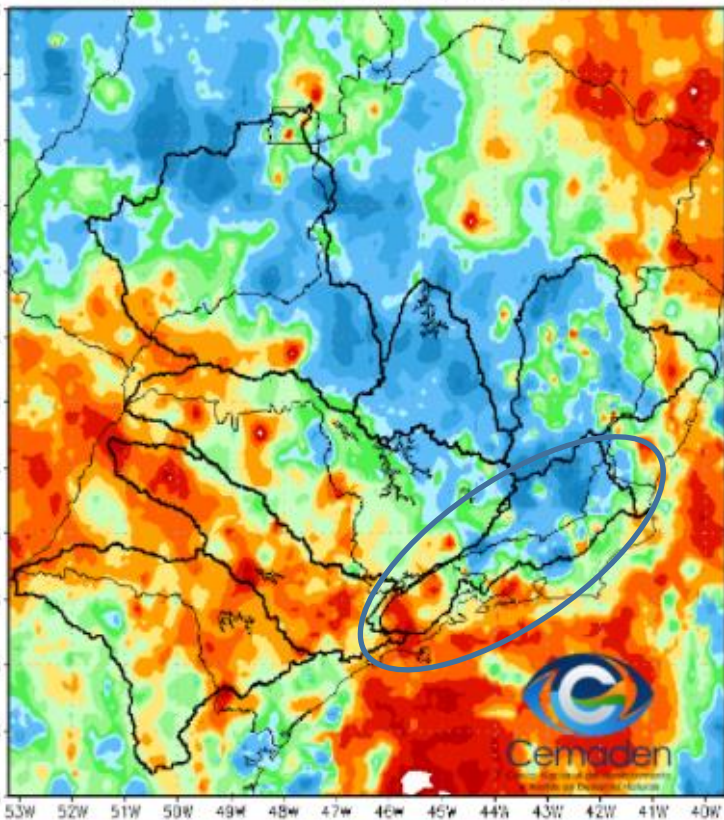


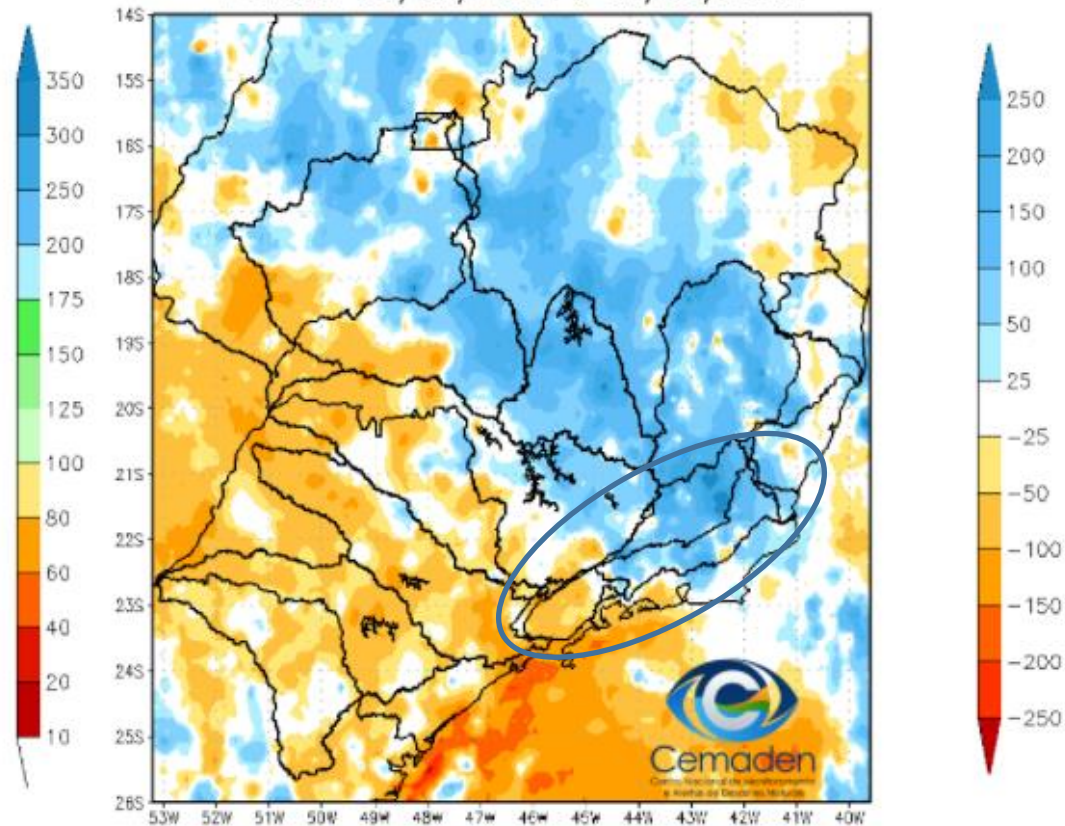
# Monitoramento e Previsões de Chuva para a Bacia do Rio Paraíba do Sul

# Precipitação acumulada nos últimos 30 dias

Precipitação Acumulada (mm) A.S.  
Período: 05/02/2022 a 07/03/2022



Anomalia de Precipitação (mm) A.S.  
Período: 05/02/2022 a 07/03/2022

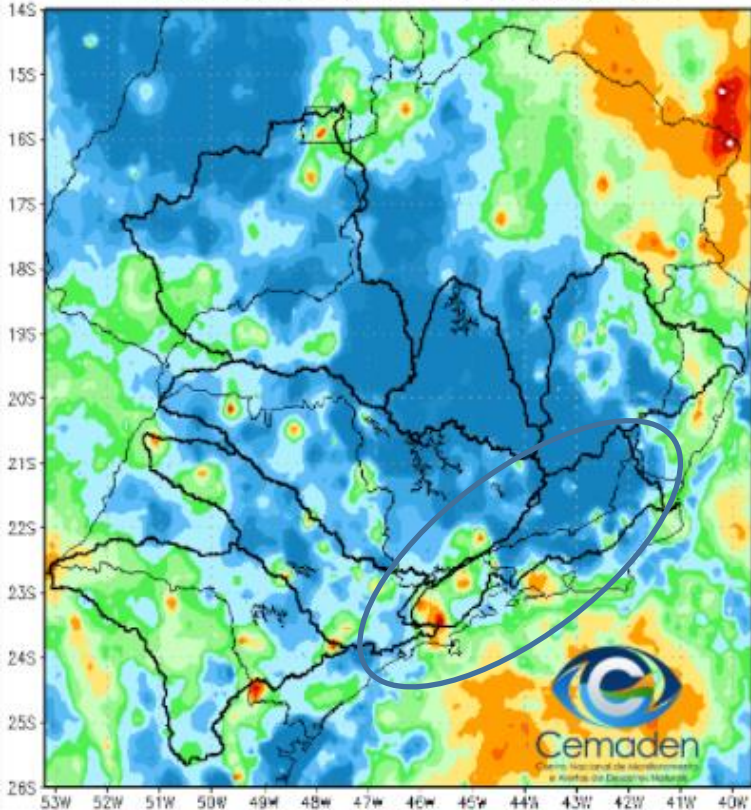


FONTE DOS DADOS INPE

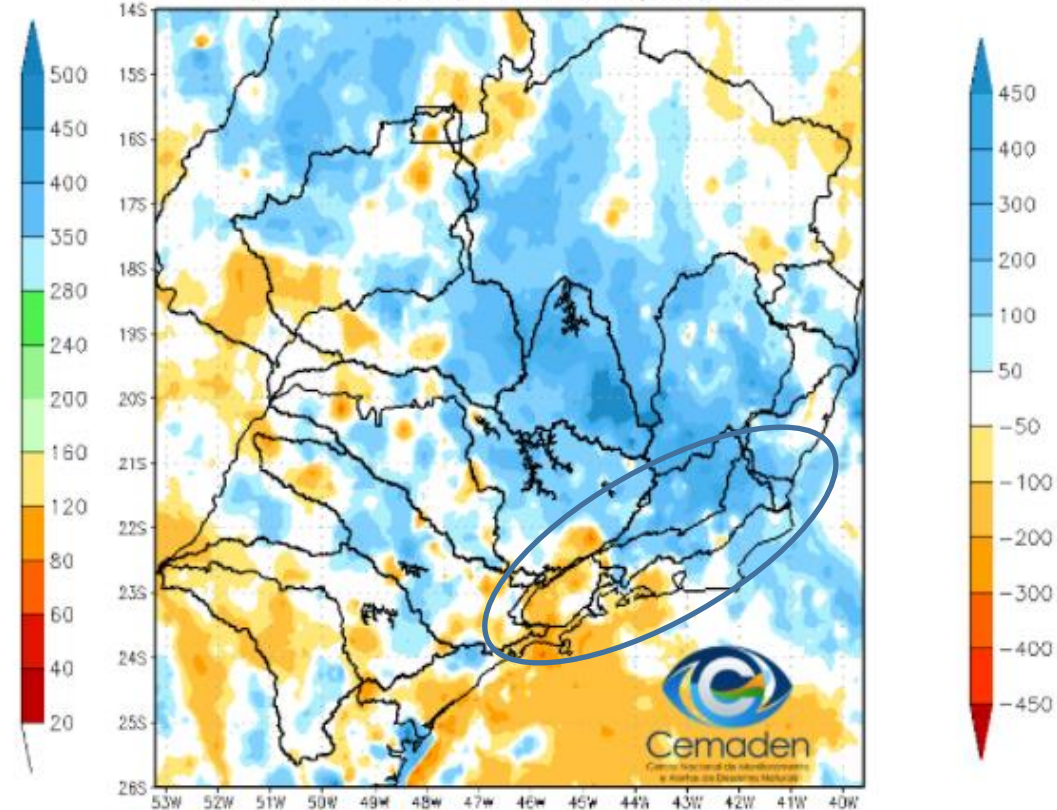


# Precipitação acumulada nos últimos 60 dias

Precipitação Acumulada (mm) A.S.  
Período: 06/01/2022 a 07/03/2022

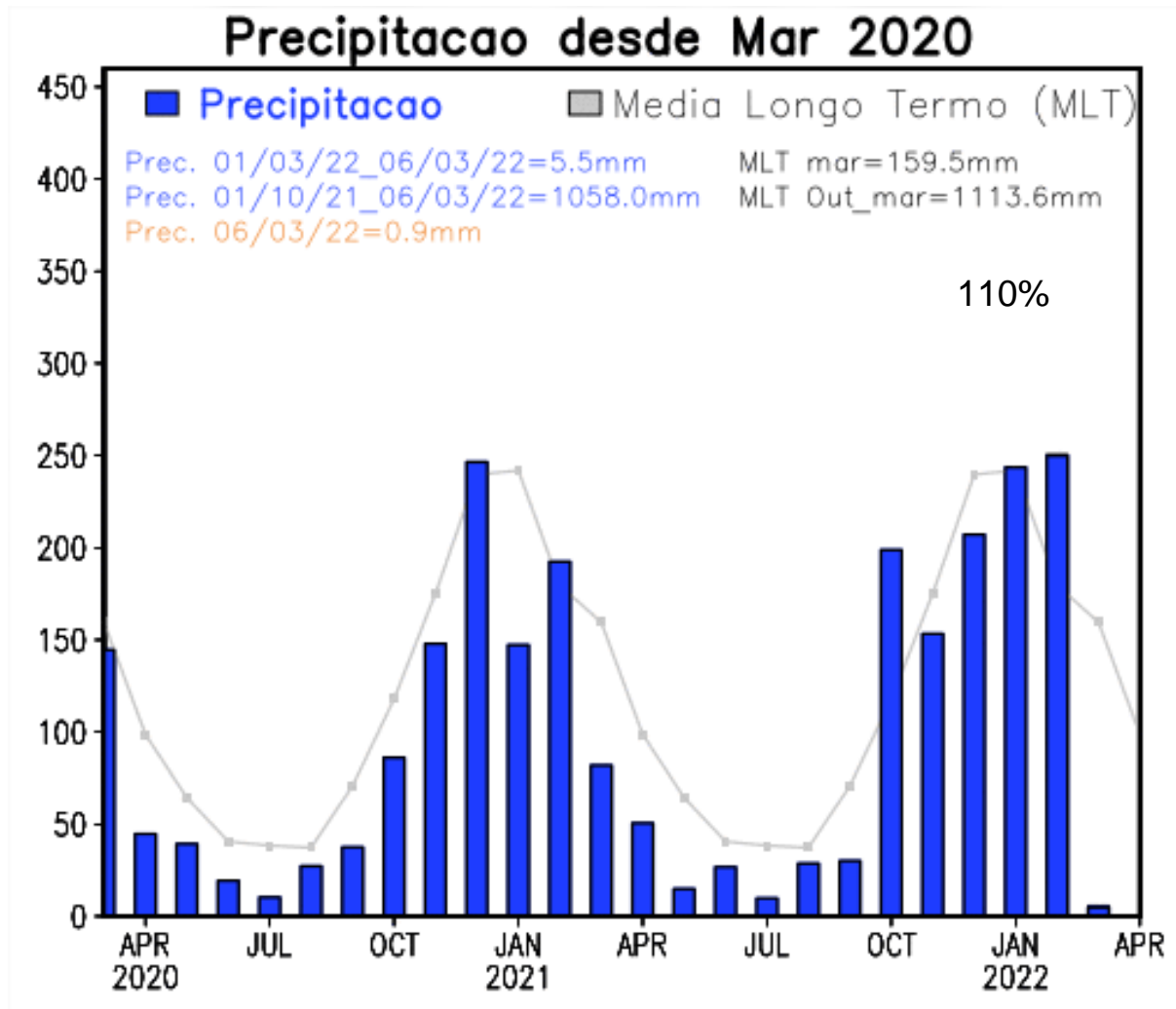


Anomalia de Precipitação (mm) A.S.  
Período: 06/01/2022 a 07/03/2022

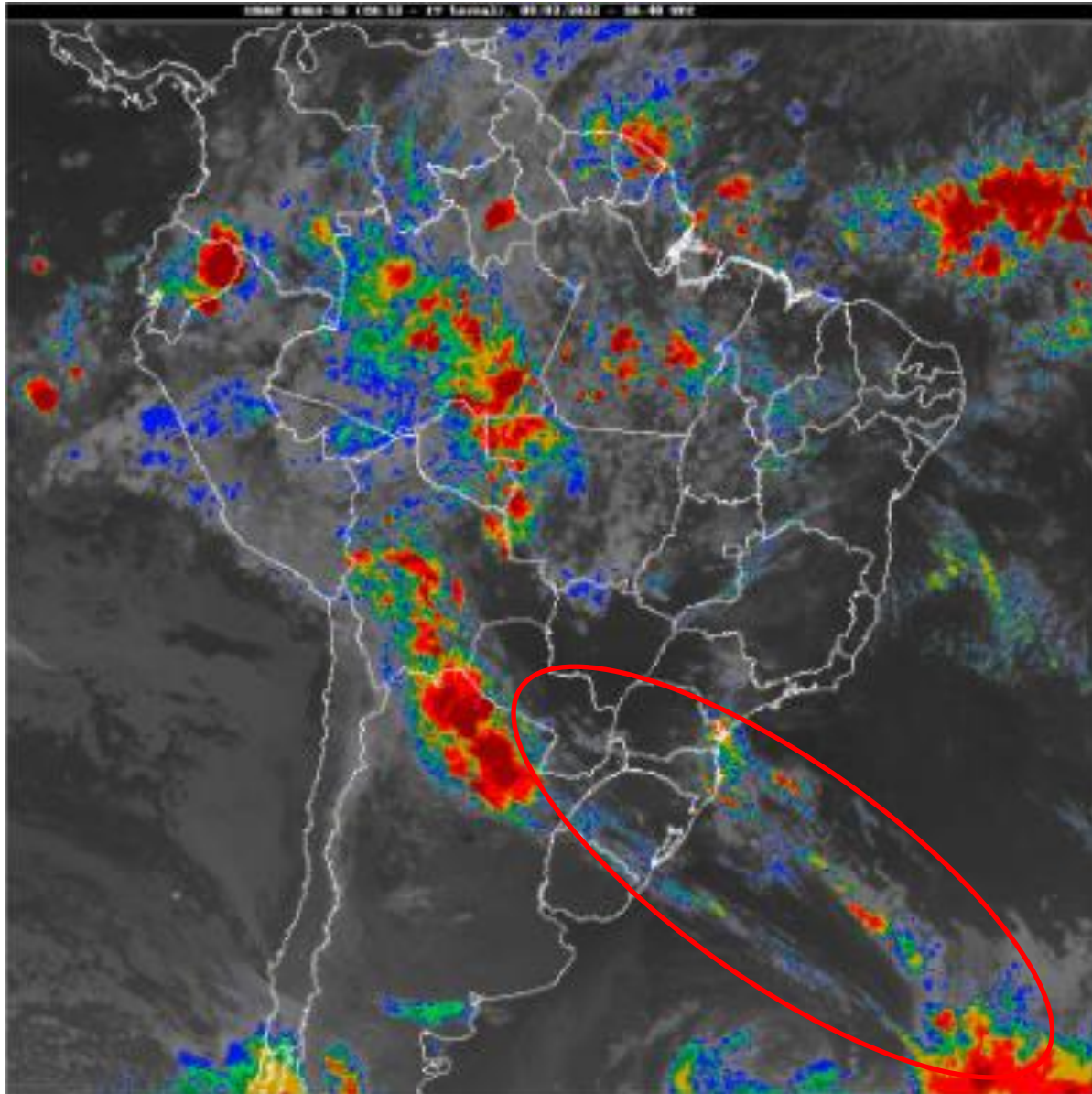


FONTE DOS DADOS INPE

# Precipitação nos últimos 2 anos

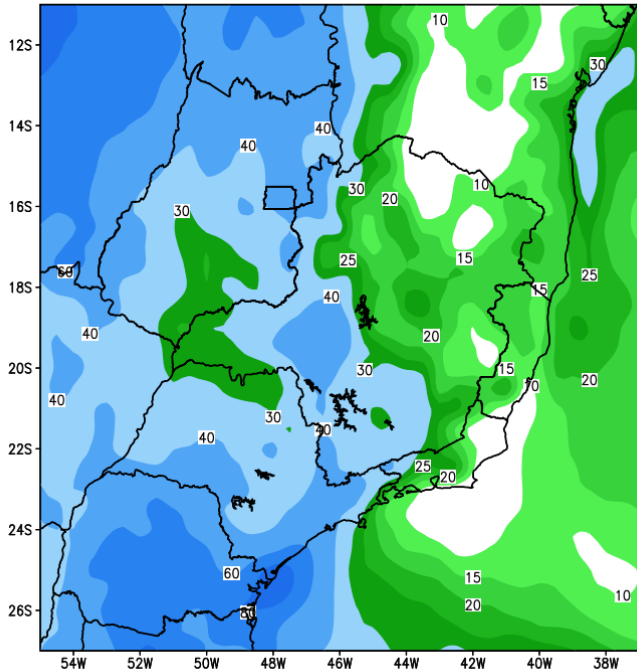


# Situação meteorológica atual

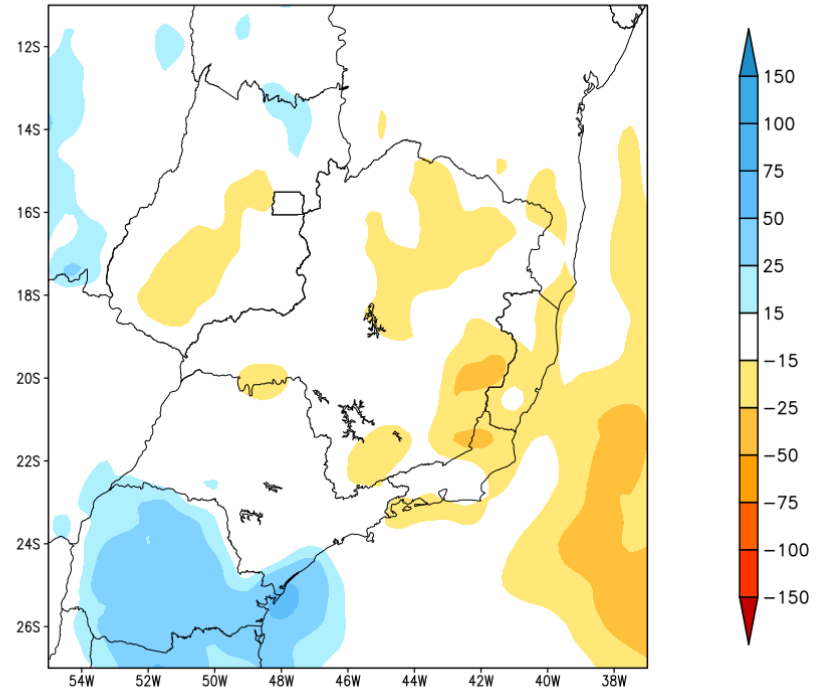


# Previsão de chuva para os próximos 7 dias

GEFS / BRASIL\_SE  
Precipitacao acumulada 1aSem (mm)  
Previsao das 00Z dia 08/03/2022



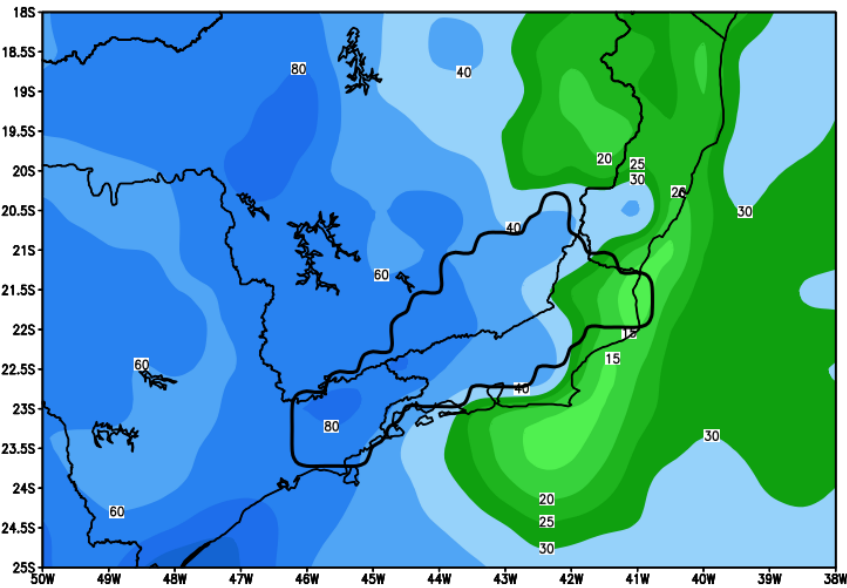
Anomalia de Precipitacao BR SE (mm)  
Periodo: 2022030800 a 2022031500



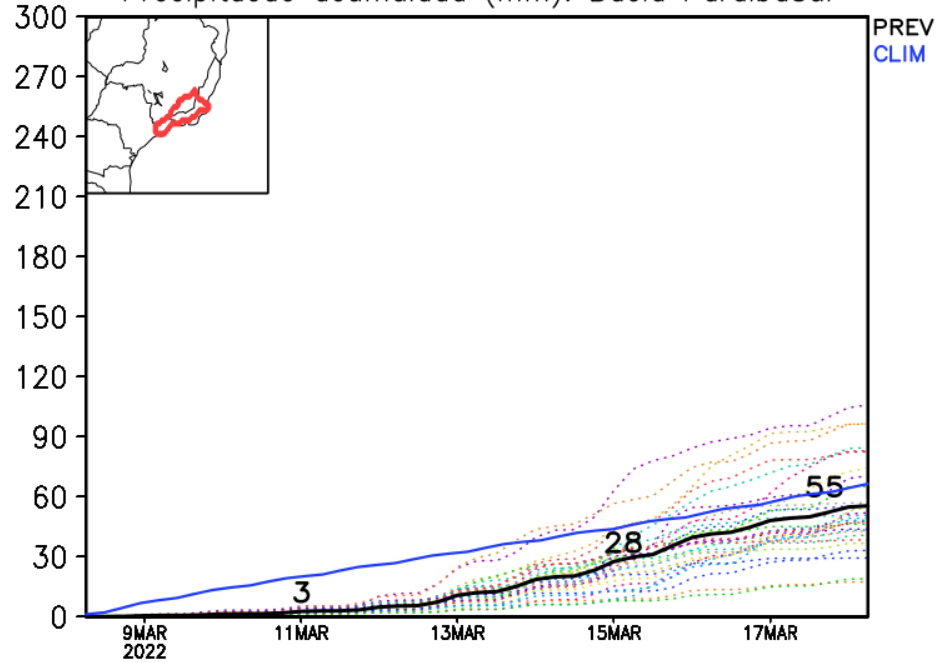


# Rio Paraíba do Sul

GEFS / Bacia do Rio Paraíba do Sul  
Precipitacao acumulada em 10 dias (mm)  
Previsao das 00Z dia 08/03/2022



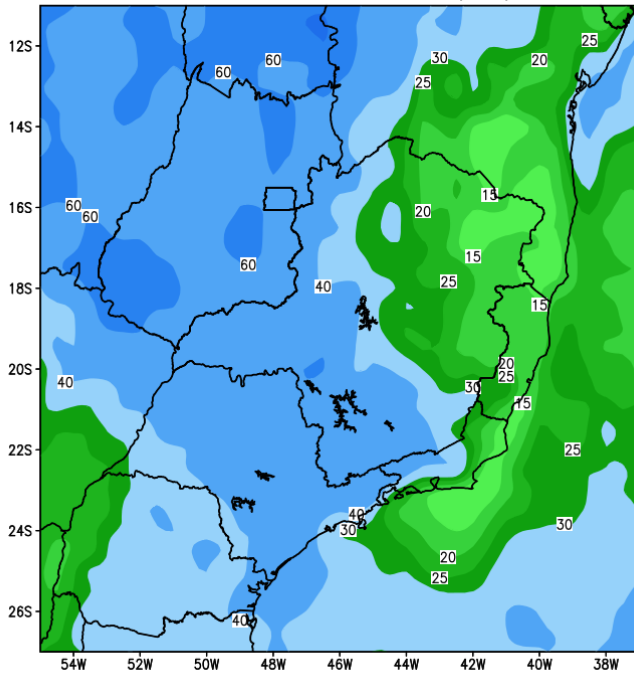
Precipitacao acumulada (mm): Bacia ParaibaSul



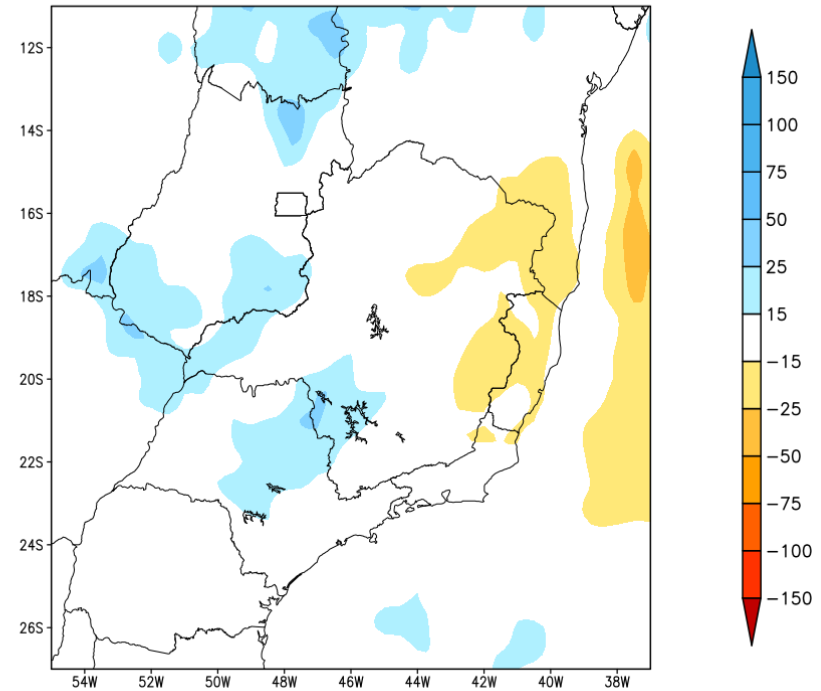
Modelo GFS/NOAA

# Tendência para a 2a semana

GEFS / BRASIL\_SE  
Precipitacao acumulada 2aSem (mm)  
Previsao das 00Z dia 08/03/2022

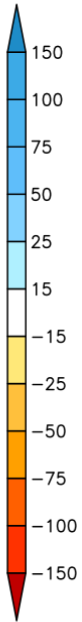
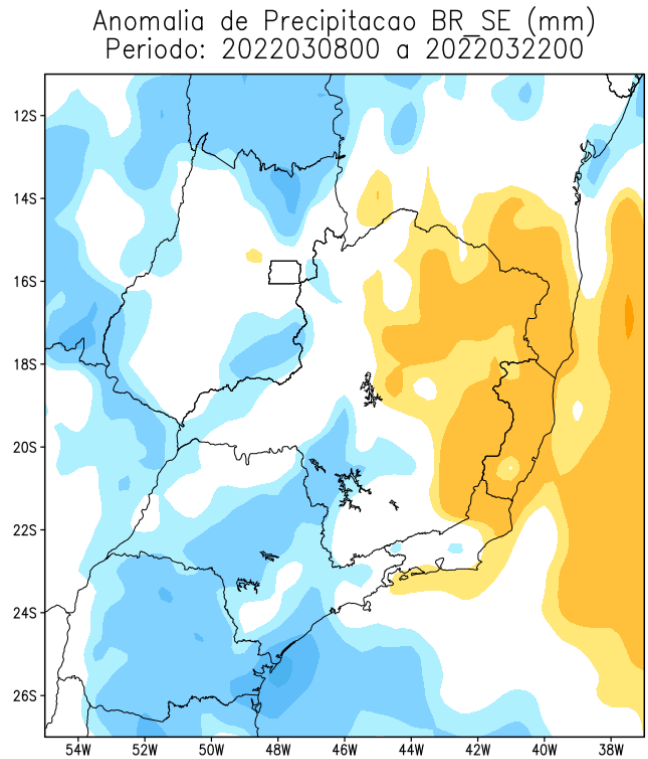
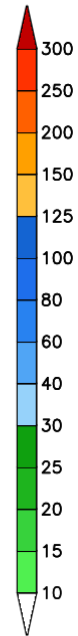
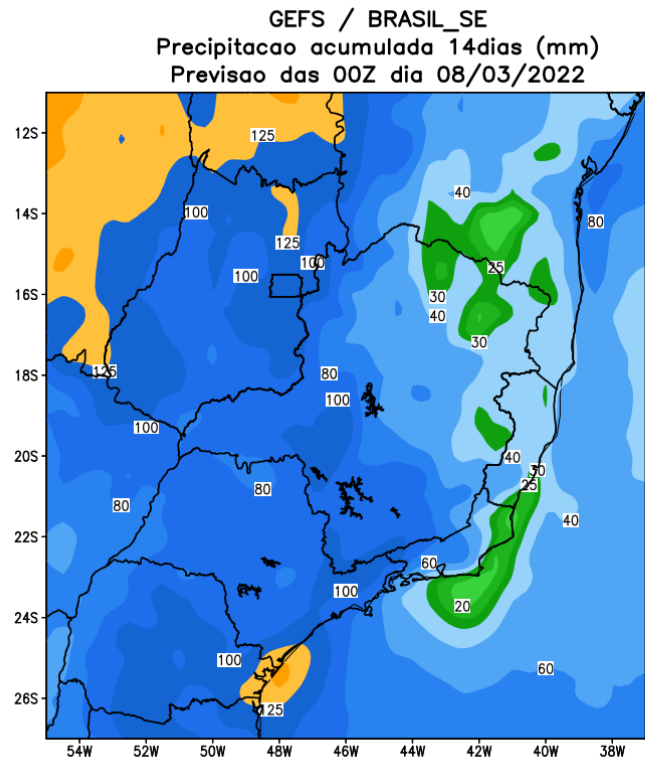


Anomalia de Precipitacao BR\_SE (mm)  
Periodo: 2022031600 a 2022032200

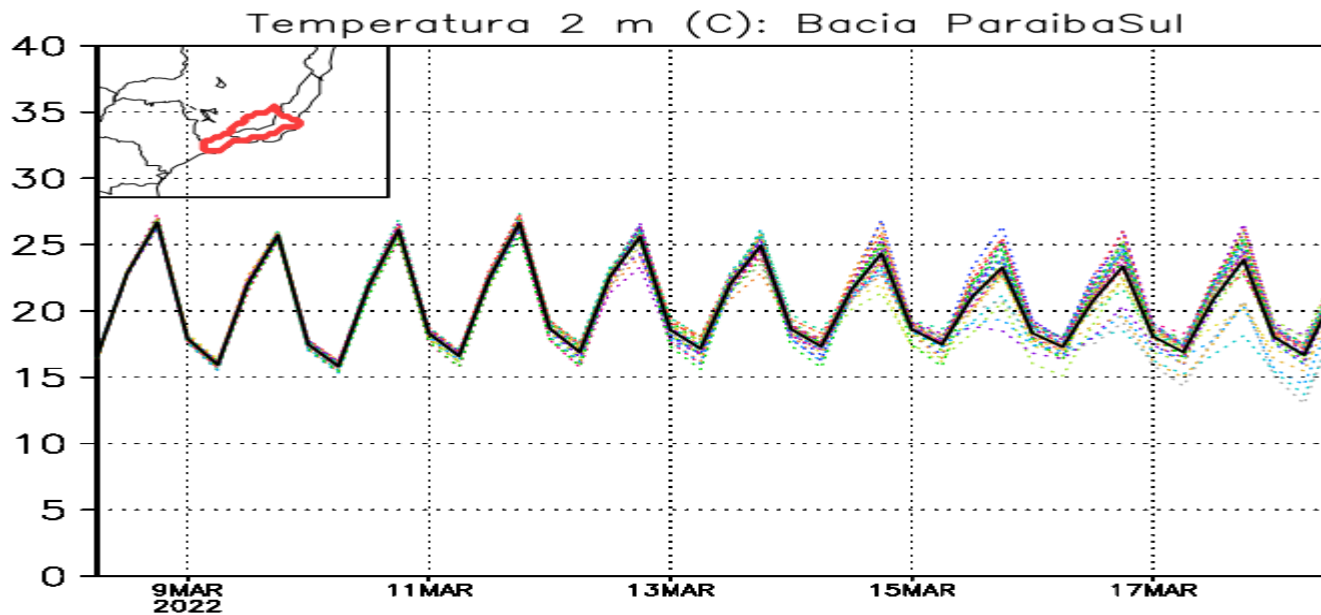
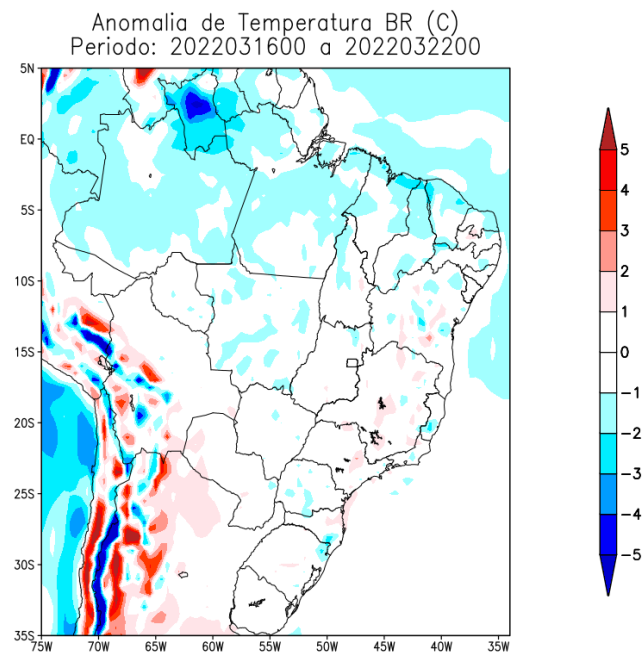
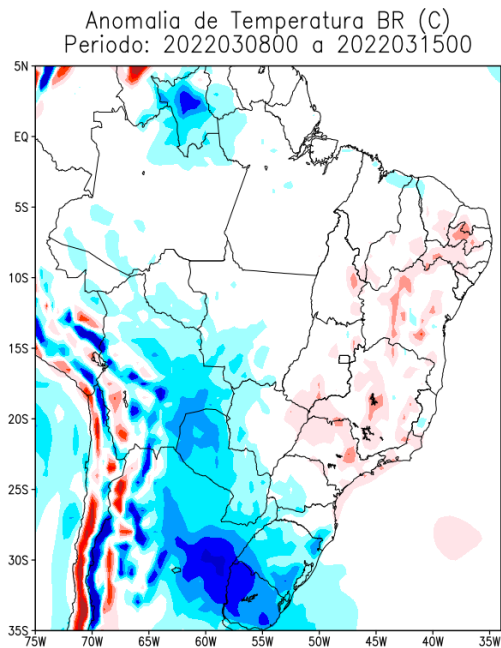




# Tendência para as próximas duas semanas

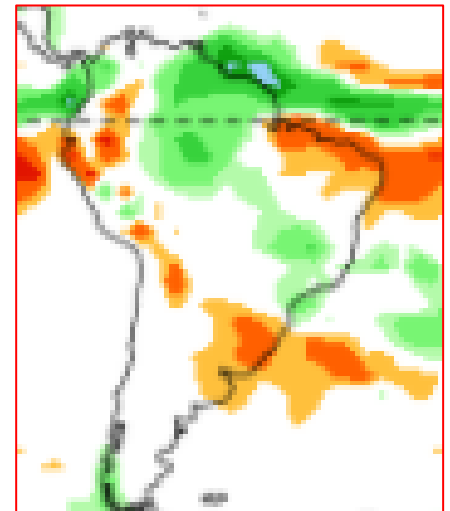
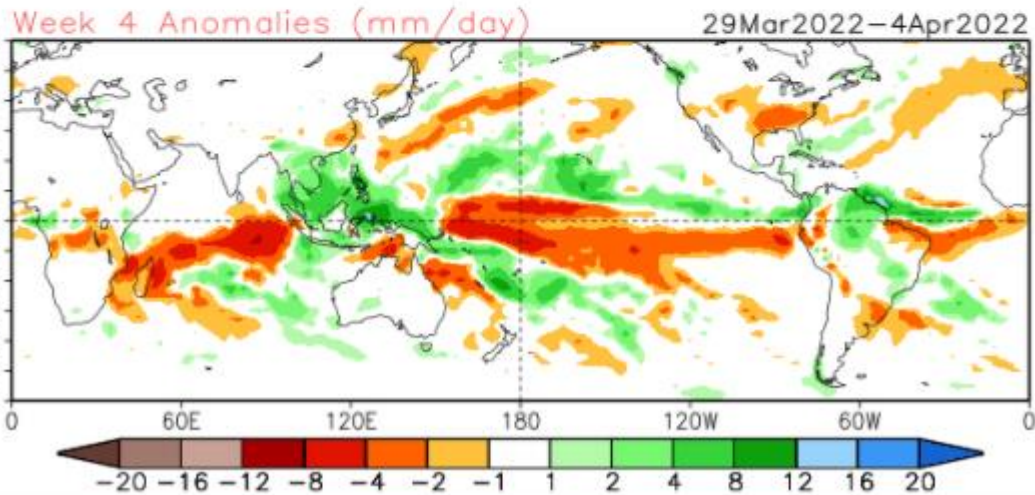
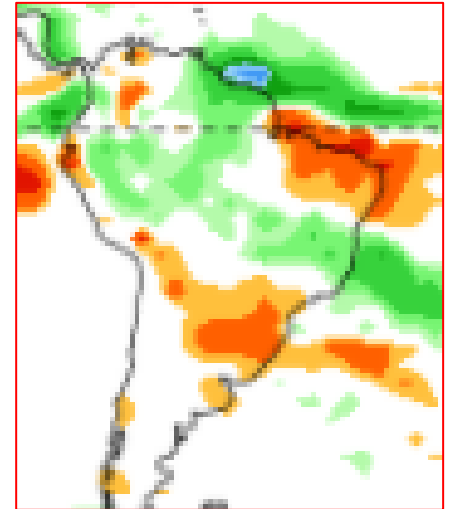
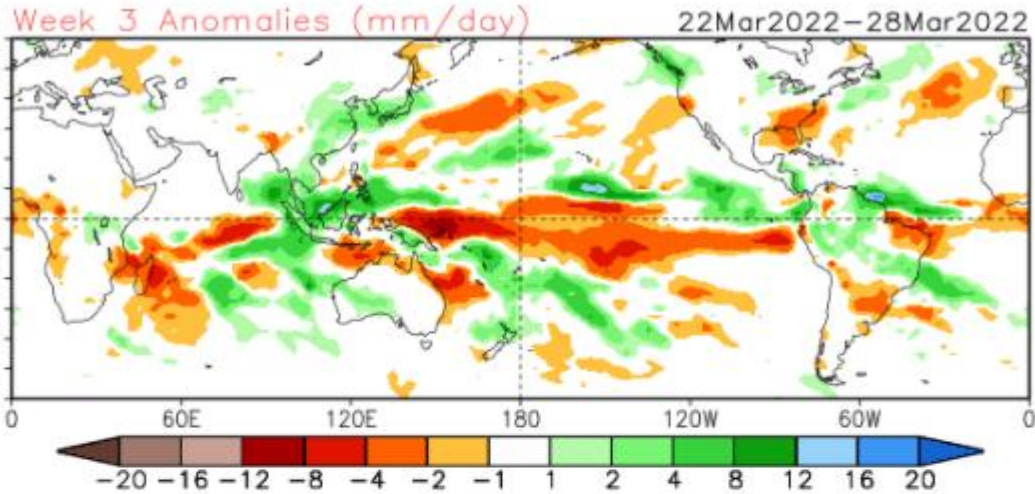


# Previsão de Temperatura para as próximas duas semanas



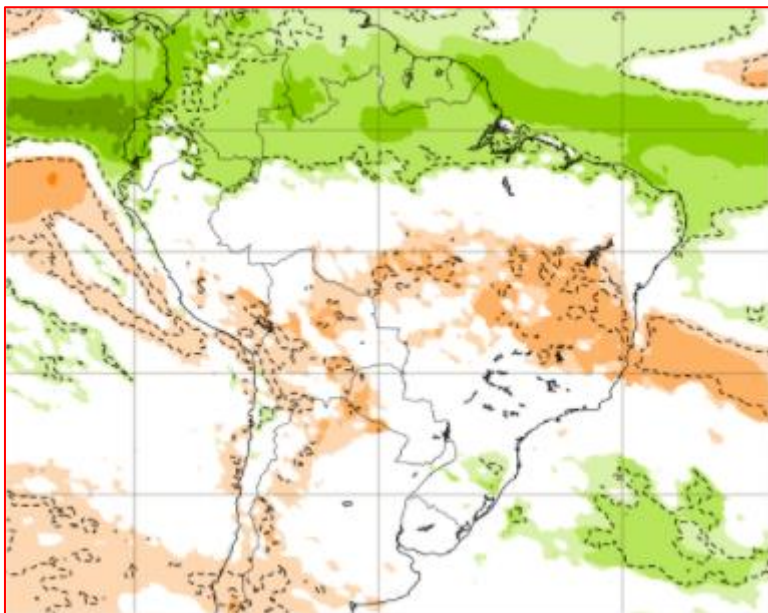
# Tendência 3a e 4a semanas

16 Member Ensemble Mean Forecast from 07Mar2022



# Tendência para 3ª e 4ª semanas

21-28/03



28-03/04-04

